

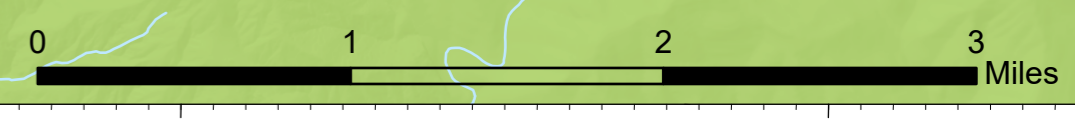
Dolan Fire
CA-LPF-002428

Coleman
CA-LPF-003161

10/31/2020

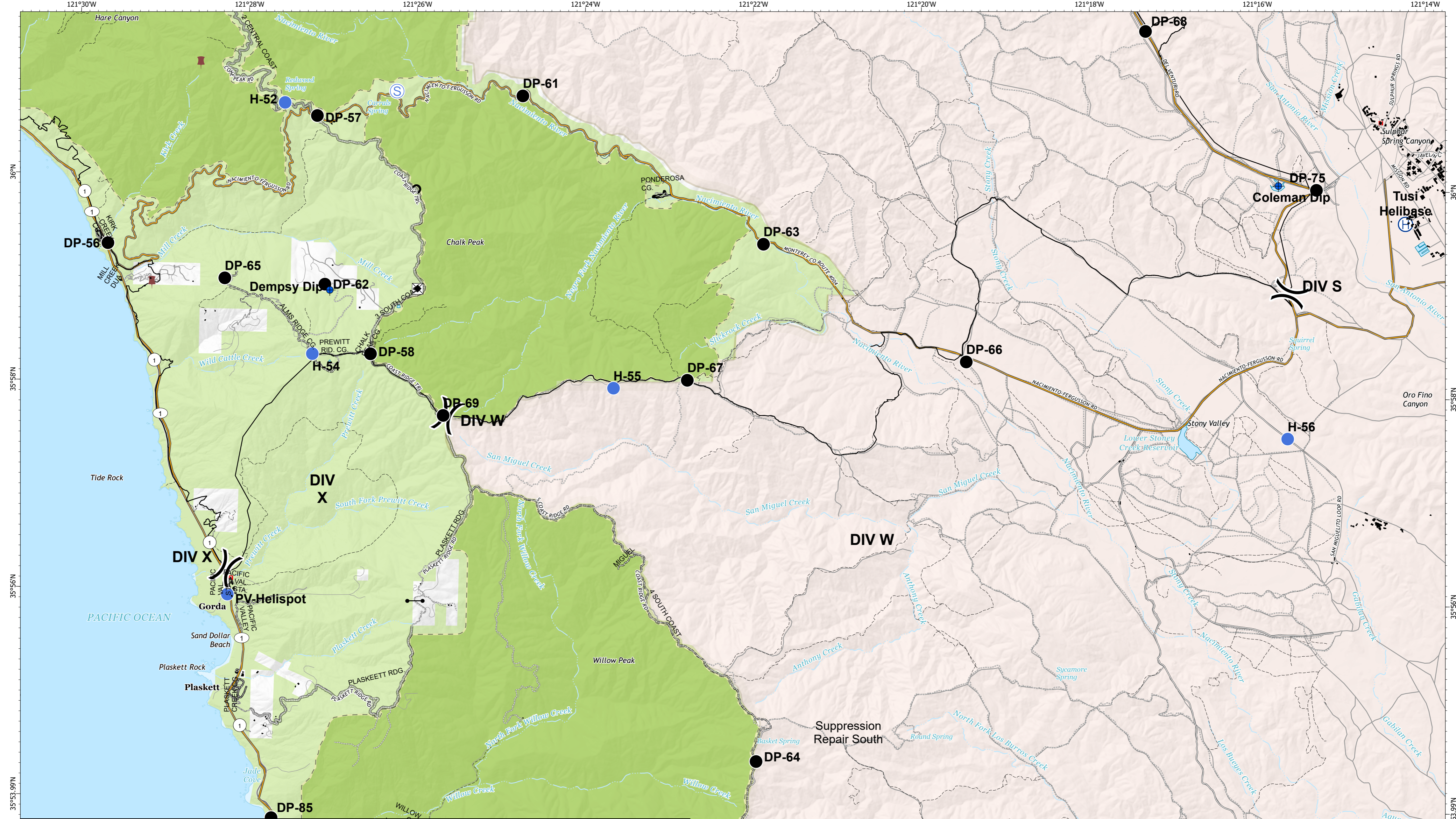
● Dip Site	■ Structures Road - Unimproved	■ Wilderness
● Drop Point	Event Group Layer Point Labels Defined	----- Trail	■ Ownership
■ Dozer Push	■ Uncontrolled Fire Edge	— Local or Other Road	■ Federal, BLM
● Gate	— Contained Line	USFS Roads	■ Federal, USFS
● Helispot	— Dolan Fire Major Travel Route	1 - BASIC CUSTODIAL CARE (CLOSED)	■ State Owned
■ Landmark	— Road - 4WD	2 - HIGH CLEARANCE VEHICLES	■ Local Govt.
✳ Road Repair	— Road - Light Duty - Dirt, Gravel	3 - SUITABLE FOR PASSENGER CARS	■ Private or Other
Ⓢ Staging Area	— Road - Light Duty - Unspecified Composition	4 - MODERATE DEGREE OF USER COMFORT	
) Division Break			

Road Repair North



121°46'W 121°44'W 121°42'W 121°40'W 121°38'W 121°36.01'W 121°34'W

36°14'N 36°12'N 36°10'N 36°8'N



Dolan Fire
CA-LPF-002428

Coleman
CA-LPF-003161

10/31/2020

<ul style="list-style-type: none"> ○ Culvert ⊕ Dip Site ● Drop Point 🚧 Dozer Push — Gate ⊕ Helibase ● Helispot ⊗ Road Repair ⊙ Staging Area) (Division Break 	<ul style="list-style-type: none"> ■ Structures Event Group Layer Point Labels Defined — Contained Line — Dolan Fire Major Travel Route — Road - Light Duty - Dirt, Gravel — Road - Light Duty - Paved — Road - Light Duty - Unspecified Composition 	<ul style="list-style-type: none"> ⋯ Road - Unimproved - - - Trail — Local or Other Road USFS Roads 2 - HIGH CLEARANCE VEHICLES 3 - SUITABLE FOR PASSENGER CARS 5 - HIGH DEGREE OF USER COMFORT 	<ul style="list-style-type: none"> Land Wilderness Fort Hunter Liggett Ownership Federal, BLM Federal, USFS State Owned Private or Other
--	---	--	--

Road Repair South

