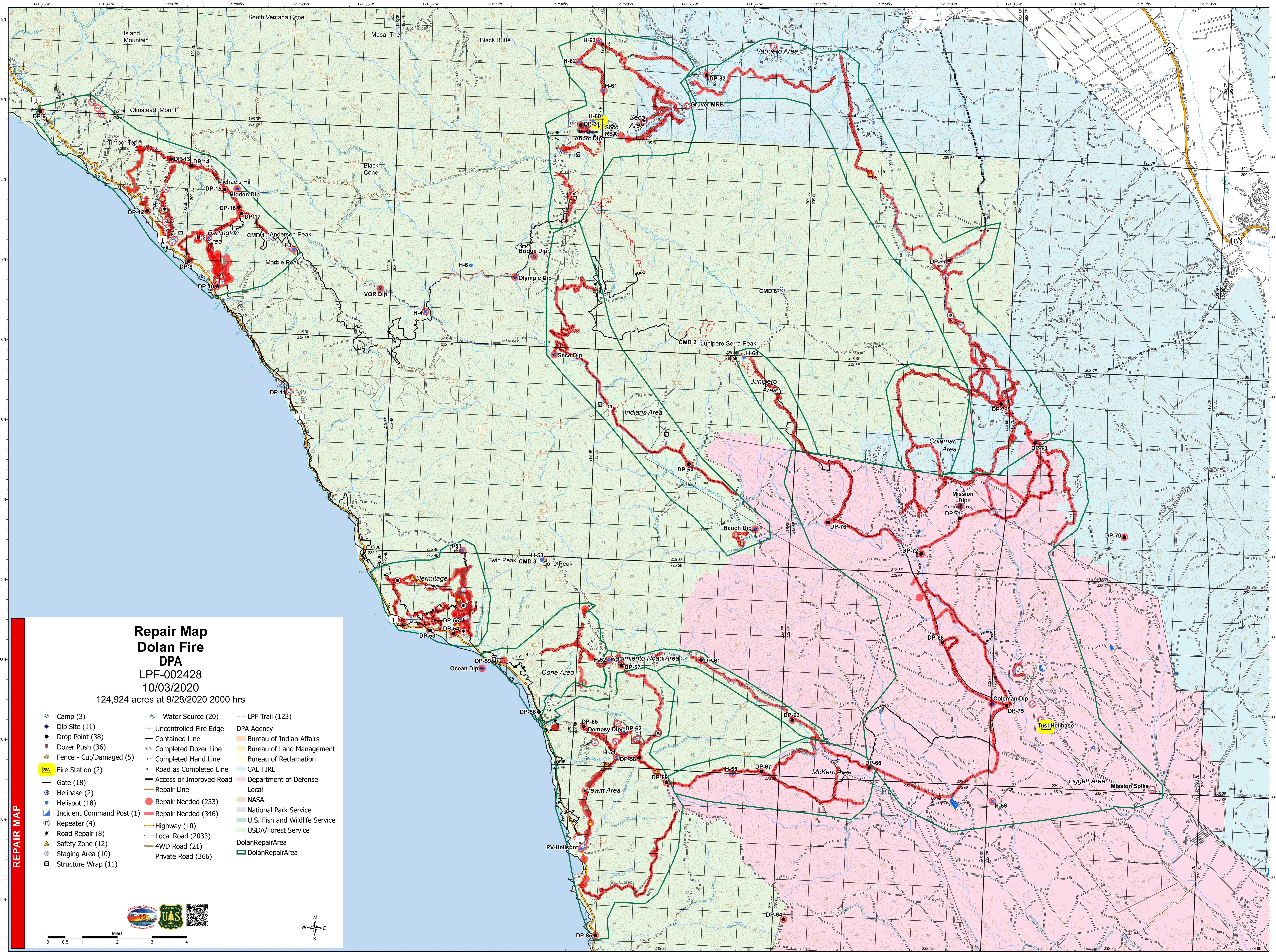
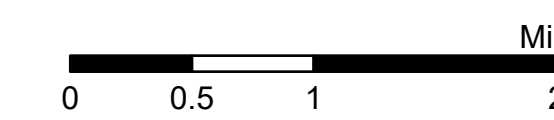
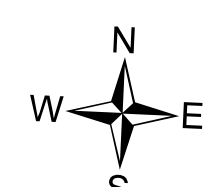


# Repair Map Dolan Fire DPA

LPF-002428  
10/03/2020

124,924 acres at 9/28/2020 2000 hrs

- |                             |                           |                                |
|-----------------------------|---------------------------|--------------------------------|
| ● Camp (3)                  | ● Water Source (20)       | --- LPF Trail (123)            |
| ● Dip Site (11)             | — Uncontrolled Fire Edge  | DPA Agency                     |
| ● Drop Point (38)           | — Contained Line          | Bureau of Indian Affairs       |
| ● Dozer Push (36)           | — Completed Dozer Line    | Bureau of Land Management      |
| ● Fence - Cut/Damaged (5)   | — Completed Hand Line     | Bureau of Reclamation          |
| ● Fire Station (2)          | — Road as Completed Line  | CAL FIRE                       |
| — Gate (18)                 | — Access or Improved Road | Department of Defense          |
| ● Helibase (2)              | — Repair Line             | Local                          |
| ● Helispot (18)             | ● Repair Needed (233)     | NASA                           |
| ● Incident Command Post (1) | ● Repair Needed (346)     | National Park Service          |
| ● Repeater (4)              | — Highway (10)            | U.S. Fish and Wildlife Service |
| ● Road Repair (8)           | — Local Road (2033)       | USDA/Forest Service            |
| ● Safety Zone (12)          | — 4WD Road (21)           |                                |
| ● Staging Area (10)         | — Private Road (366)      |                                |
| ● Structure Wrap (11)       |                           |                                |



REPAIR MAP