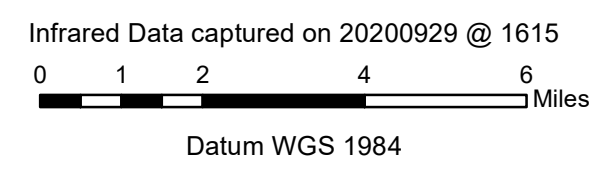


- Active Fire - Uncontrolled Spot Fire or Fire Front
- Creeping Fire - Smoker, 12" Flame Length or Less
- Hot Spot - Significant Priority
- Hot Spot - Moderate Priority

# Dolan Fire

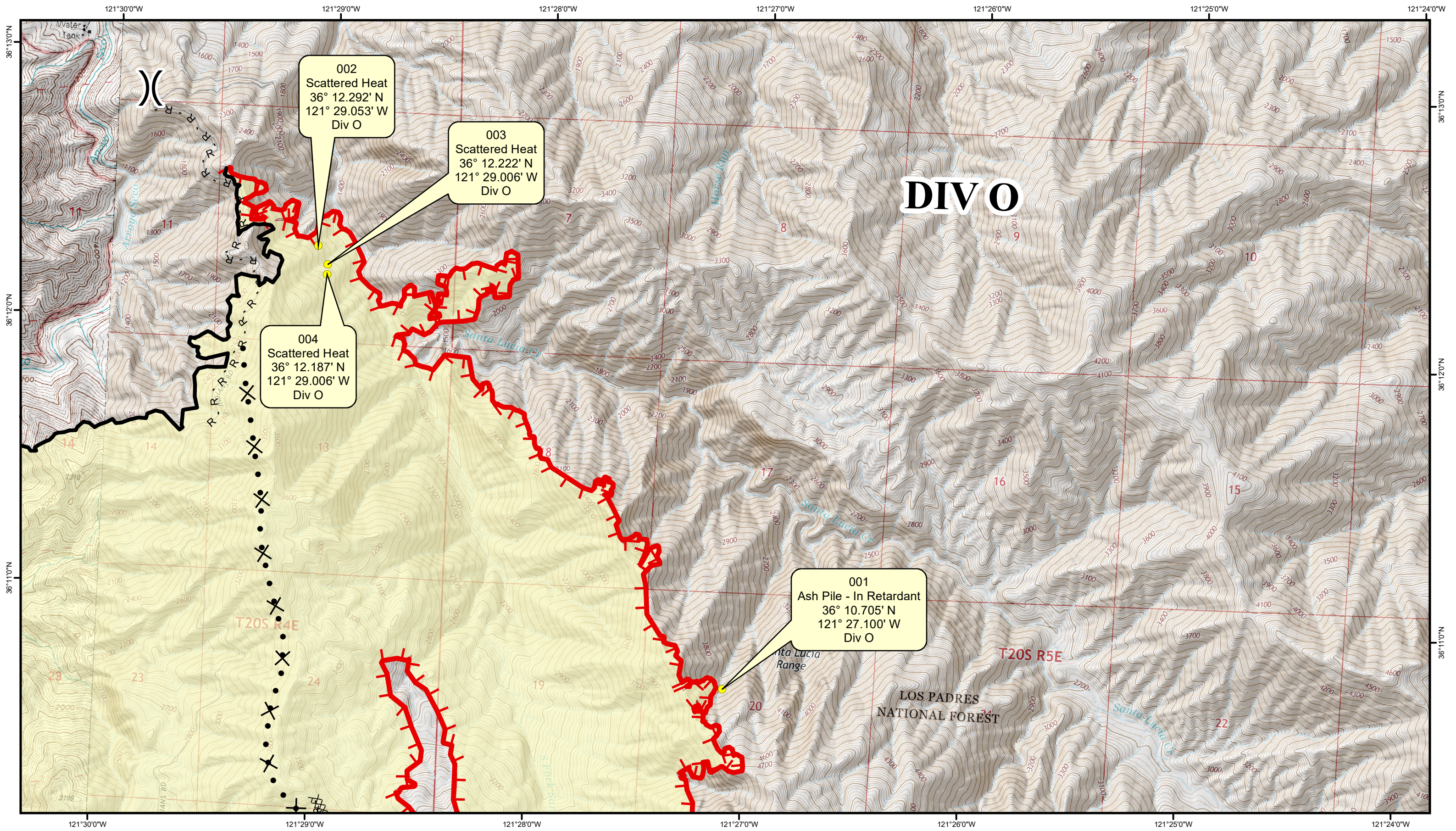
## CA-LPF-002428



Index Map

Sept. 29, 2020





- Active Fire - Uncontrolled Spot Fire or Fire Front
- Creeping Fire - Smoker, 12" Flame Length or Less
- Hot Spot - Significant Priority
- Hot Spot - Moderate Priority

# Dolan Fire

## CA-LPF-002428

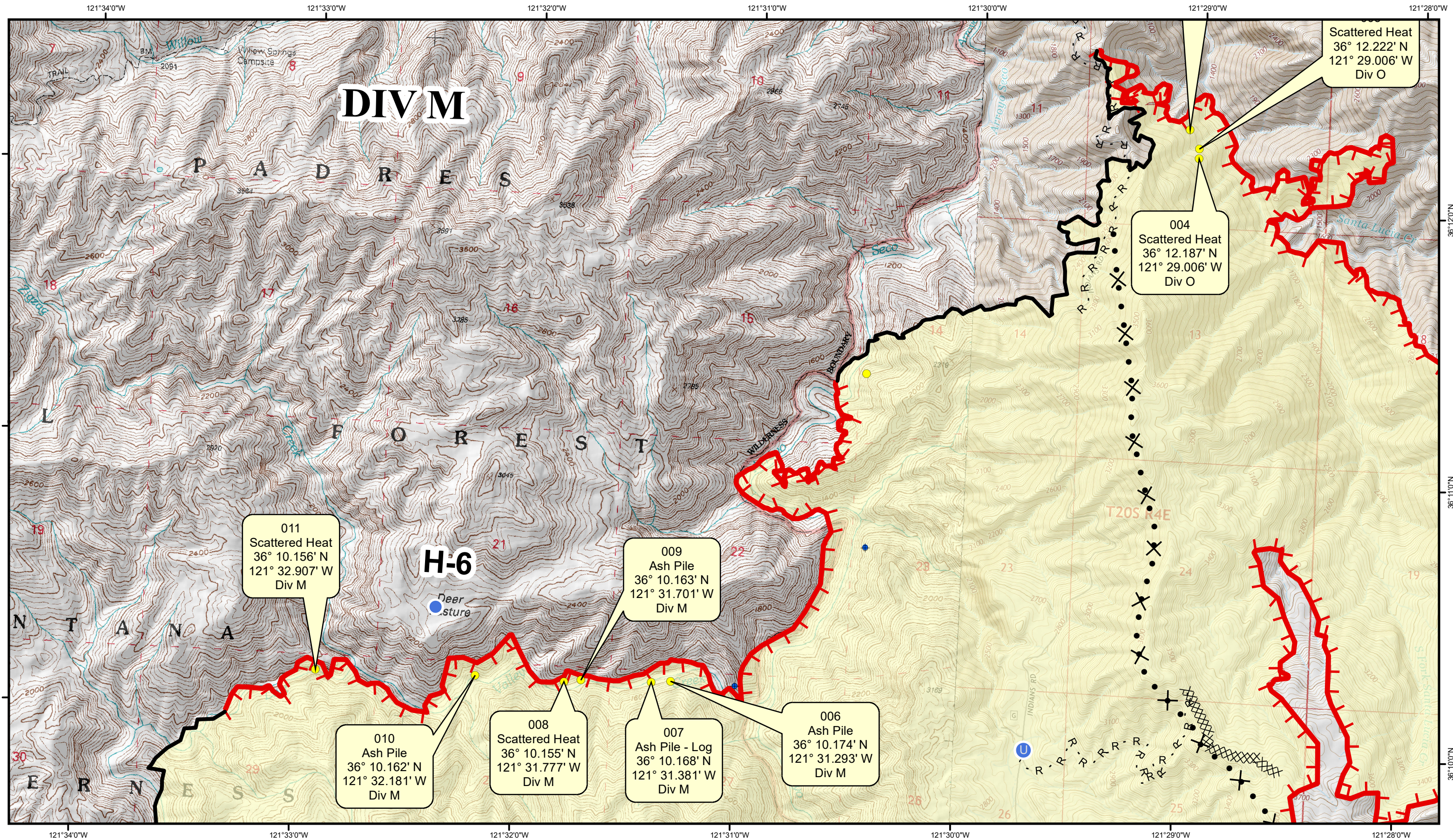
Infrared Data captured on 20200929 @ 1615

Datum WGS 1984

Div O  
Infrared Detail Map







- Active Fire - Uncontrolled Spot Fire or Fire Front
- Creeping Fire - Smoker, 12" Flame Length or Less
- Hot Spot - Significant Priority
- Hot Spot - Moderate Priority

# Dolan Fire

## CA-LPF-002428

Infrared Data captured on 20200929 @ 1615

Datum WGS 1984

Div M  
Infrared Detail Map



Sept. 29, 2020





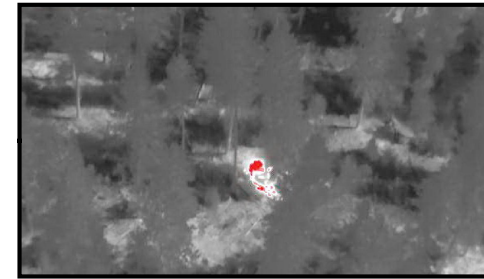
**Labeling Details:**

Active Fire: Visible Fire



**Active Fire**

Ash Pile: No Visible flame or smoke but still contains heat.



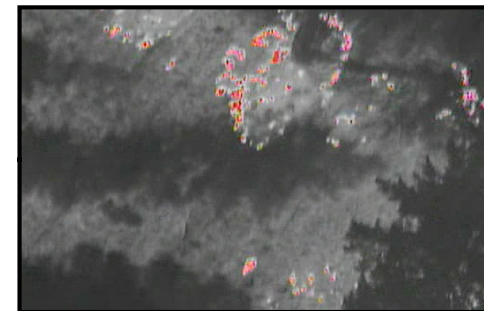
**Ash Pile**

Creeping Fire: Very small flame lengths but moving.



**Creeping Fire**

Scattered Heat: Multiple heat locations scattered over a large area.



**Scattered Heat**

Slash: Multiple fallen trees either smoking or containing visible fire.



**Slash**

Tree: Single fallen tree either smoking or containing visible fire.



**Tree**

Stump or Rootball: Stump left over from a fallen tree or tree/brush root system still smoking or containing heat.



**Stump**



**Root Ball**



Active Fire - Uncontrolled Spot Fire or Fire Front



Creeping Fire - Smoker, 12" Flame Length or Less



Hot Spot - Significant Priority



Hot Spot - Moderate Priority

GPS Coordinates are in Degrees & Decimal Minutes (DD° MM.mmmm')

Datum is WGS 84 (unless otherwise noted on map)

Ex. 34° 04.405  
 -118° 14.414

Date and Time is when the intelligence was gathered

Heat Sources are normally acquired within a 400 foot strip, 200 feet inside and 200 feet outside the fire line or fire front (wider strips are flown as necessary and are labeled on infrared map).

**LIMITS TO INFRARED AND GPS INFORMATION**

Under the best conditions heat sources less than 4 to 6 inches in diameter are inconsistent.

Very Small Heat sources under heavy canopy or in large rock piles are difficult to verify.

Accuracy of GPS coordinates is within 50 feet, 90% of the time.

Note: Ash Field is a large area with multiple Ash Piles