

- Active Fire - Uncontrolled Spot Fire or Fire Front
- Creeping Fire - Smoker, 12" Flame Length or Less
- Hot Spot - Significant Priority
- Hot Spot - Moderate Priority

Dolan Fire

CA-LPF-002428

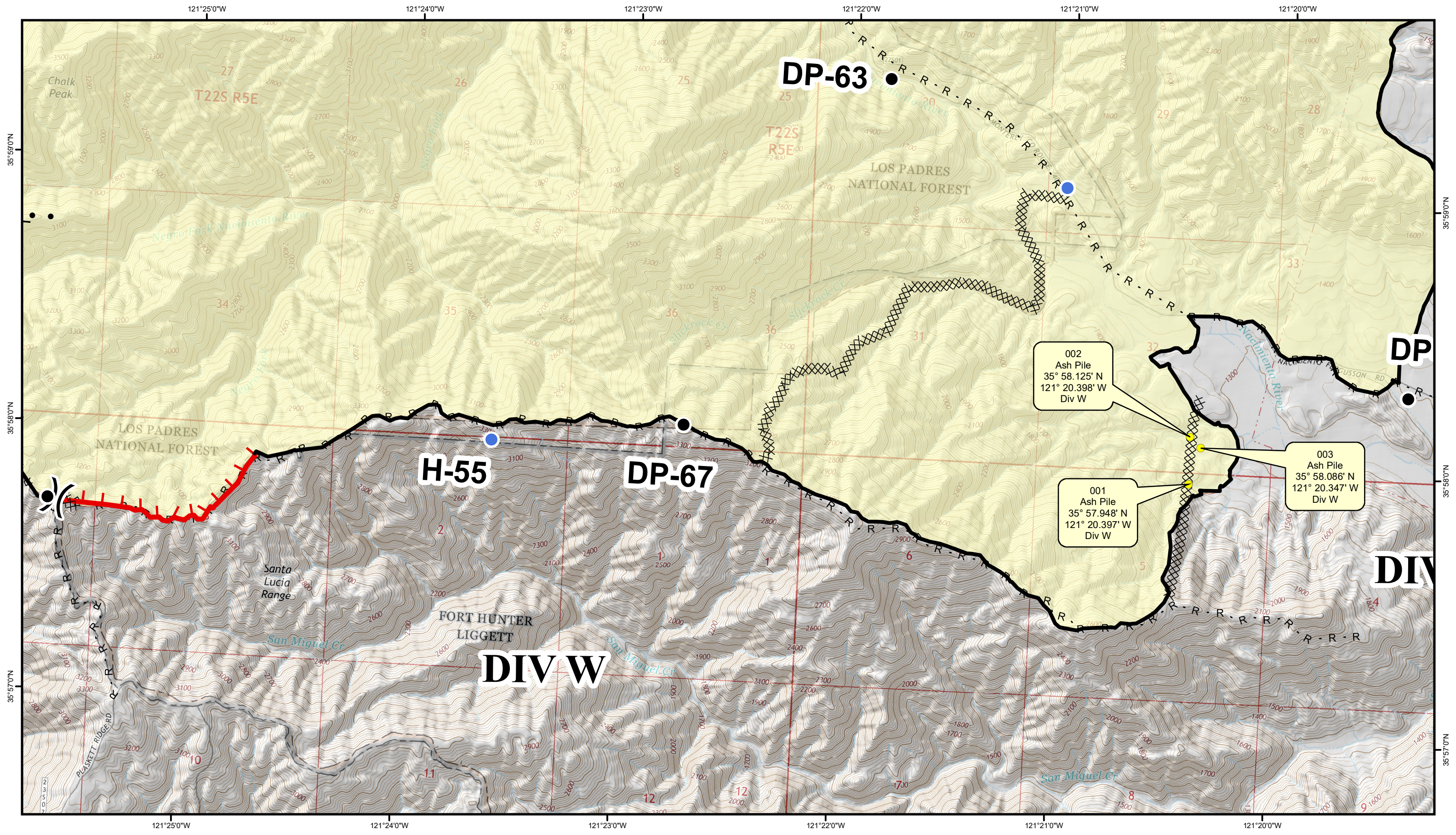
Infrared Data captured on 20201005 @ 1430 & 20201007 @ 1410







Datum WGS 1984

Index Map



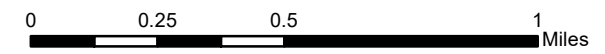


-  Active Fire - Uncontrolled Spot Fire or Fire Front
-  Creeping Fire - Smoker, 12" Flame Length or Less
-  Hot Spot - Significant Priority
-  Hot Spot - Moderate Priority

Dolan Fire

CA-LPF-002428

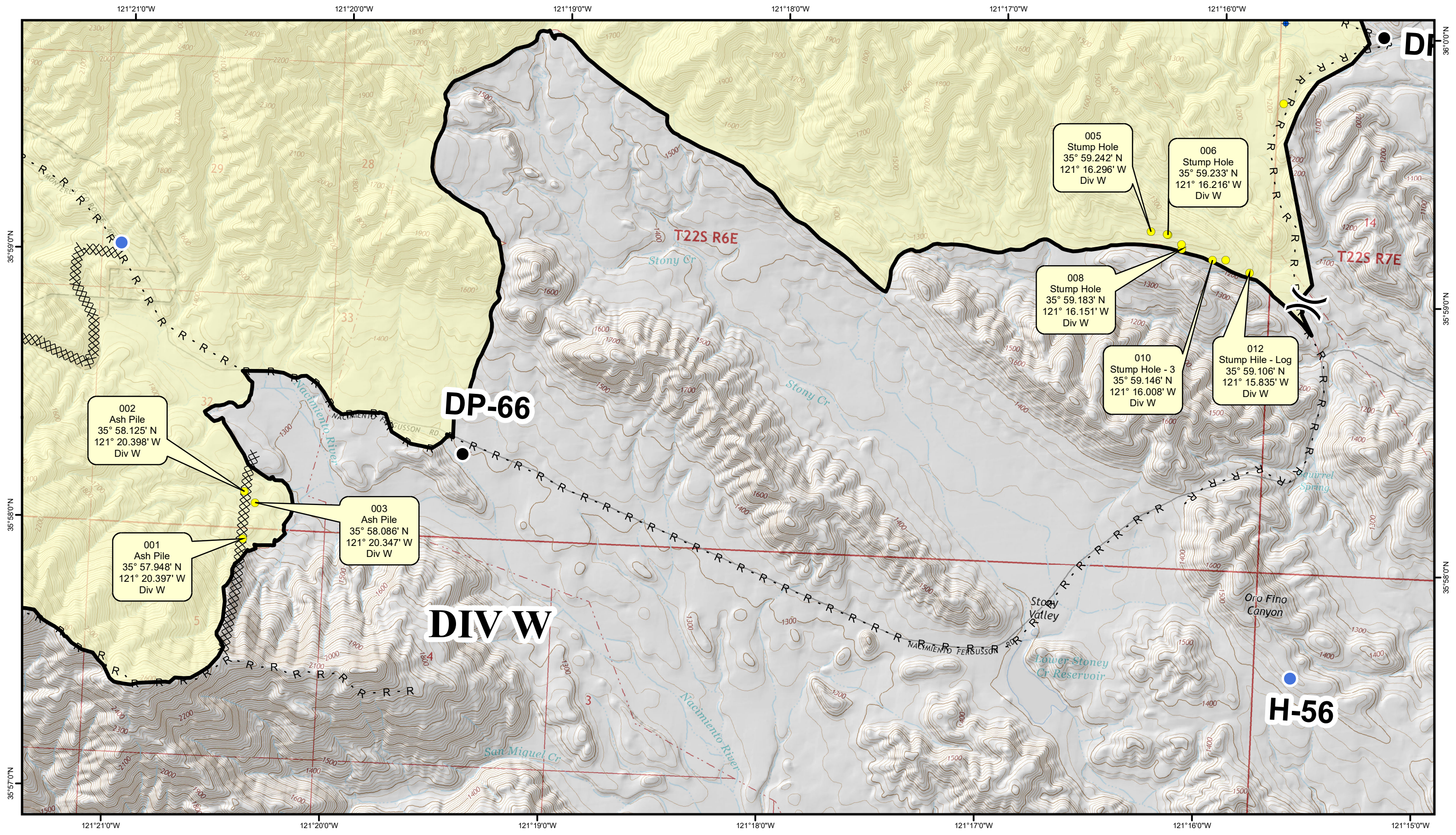
Infrared Data captured on 20201005 @ 1430 & 20201007 @ 1410



Datum WGS 1984

Div W - West
Infrared Detail Map



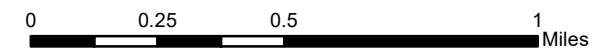


- Active Fire - Uncontrolled Spot Fire or Fire Front
- Creeping Fire - Smoker, 12" Flame Length or Less
- Hot Spot - Significant Priority
- Hot Spot - Moderate Priority

Dolan Fire

CA-LPF-002428

Infrared Data captured on 20201005 @ 1430 & 20201007 @ 1410

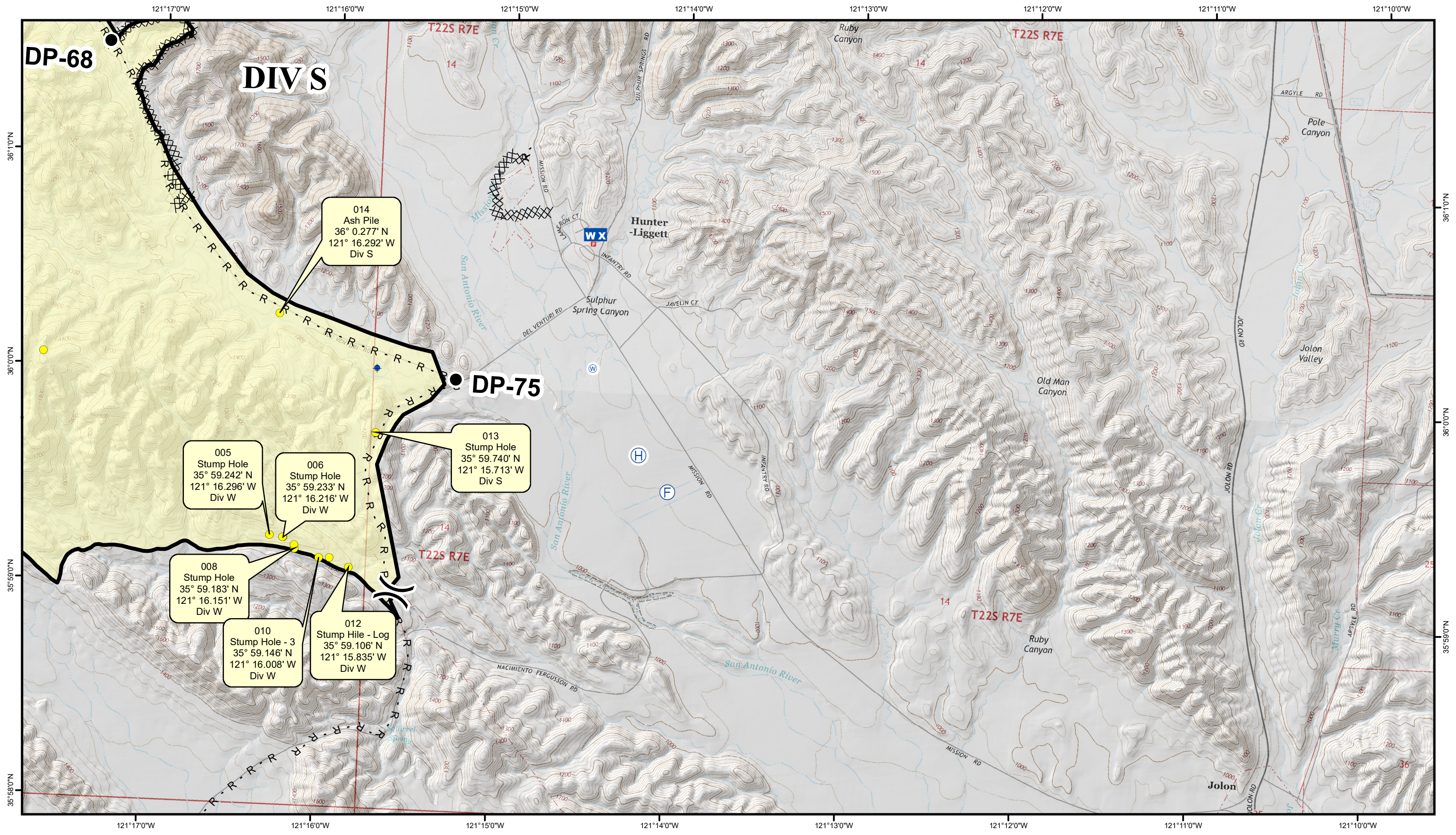


Datum WGS 1984

Div W - East
 Infrared Detail Map



Oct. 7, 2020



DP-68

DIVS

DP-75

014
Ash Pile
36° 0.277' N
121° 16.292' W
Div S

005
Stump Hole
35° 59.242' N
121° 16.296' W
Div W

006
Stump Hole
35° 59.233' N
121° 16.216' W
Div W

013
Stump Hole
35° 59.740' N
121° 15.713' W
Div S

008
Stump Hole
35° 59.183' N
121° 16.151' W
Div W

010
Stump Hole - 3
35° 59.146' N
121° 16.008' W
Div W

012
Stump Hile - Log
35° 59.106' N
121° 15.835' W
Div W



- Active Fire - Uncontrolled Spot Fire or Fire Front
- Creeping Fire - Smoker, 12" Flame Length or Less
- Hot Spot - Significant Priority
- Hot Spot - Moderate Priority

Dolan Fire

CA-LPF-002428

Infrared Data captured on 20201005 @ 1430 & 20201007 @ 1410

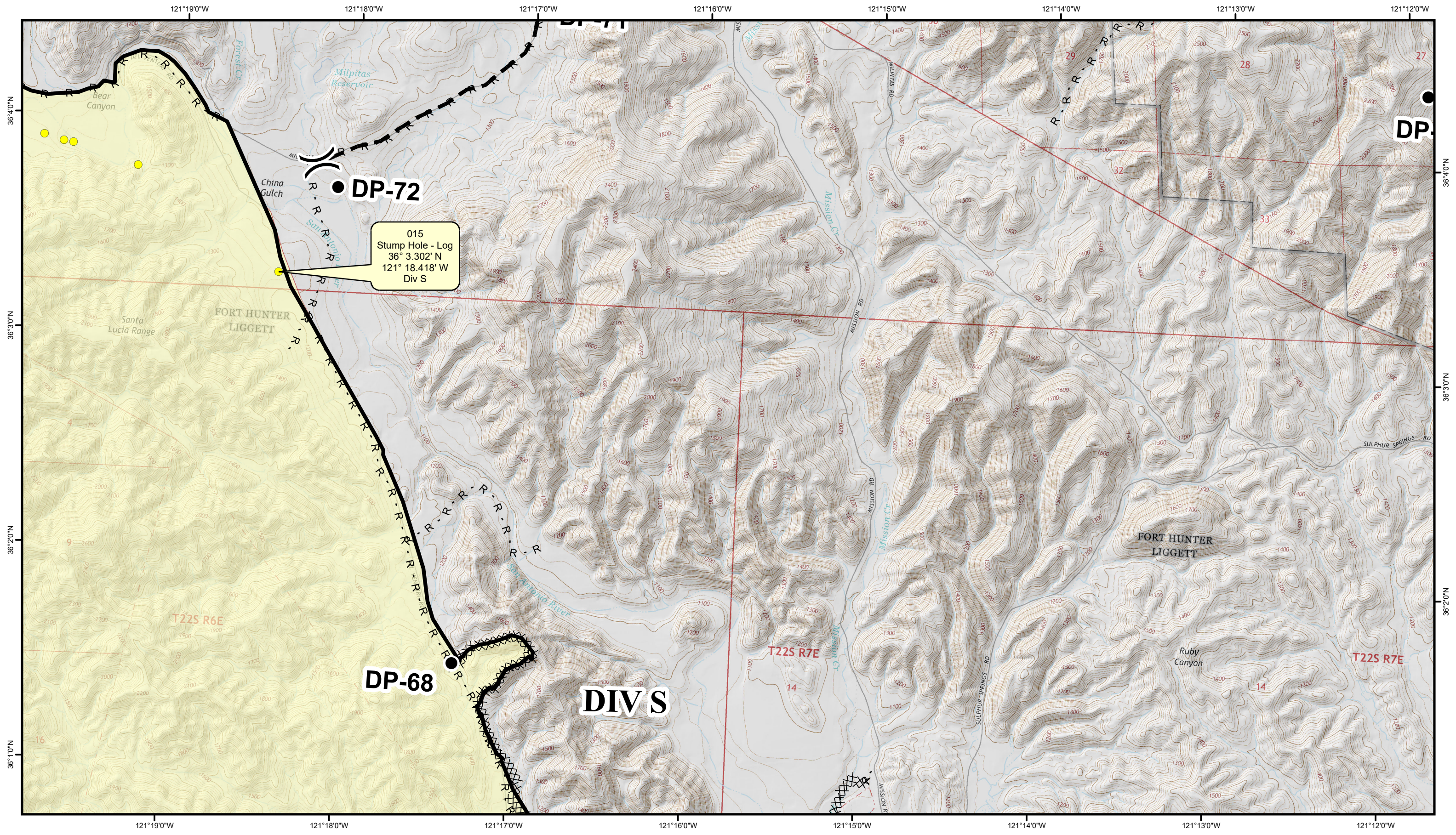






Datum WGS 1984

Div S - South
Infrared Detail Map



Oct. 7, 2020



-  Active Fire - Uncontrolled Spot Fire or Fire Front
-  Creeping Fire - Smoker, 12" Flame Length or Less
-  Hot Spot - Significant Priority
-  Hot Spot - Moderate Priority

Dolan Fire

CA-LPF-002428

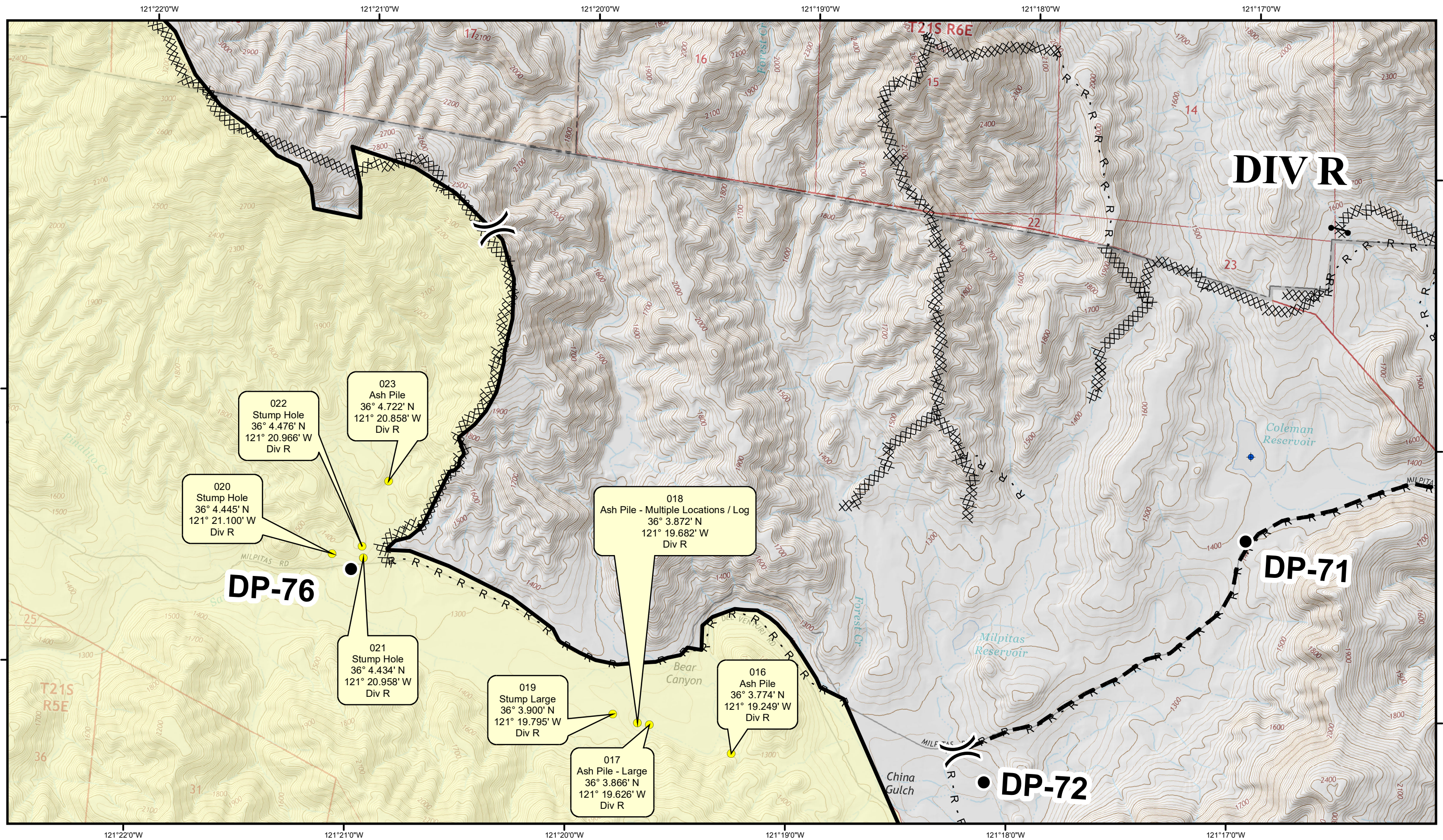
Infrared Data captured on 20201005 @ 1430 & 20201007 @ 1410



Datum WGS 1984

Div S - North
 Infrared Detail Map





022
Stump Hole
36° 4.476' N
121° 20.966' W
Div R

023
Ash Pile
36° 4.722' N
121° 20.858' W
Div R

020
Stump Hole
36° 4.445' N
121° 21.100' W
Div R

018
Ash Pile - Multiple Locations / Log
36° 3.872' N
121° 19.682' W
Div R

021
Stump Hole
36° 4.434' N
121° 20.958' W
Div R

019
Stump Large
36° 3.900' N
121° 19.795' W
Div R

016
Ash Pile
36° 3.774' N
121° 19.249' W
Div R

017
Ash Pile - Large
36° 3.866' N
121° 19.626' W
Div R

DIV R

DP-71

DP-76

DP-72



- Active Fire - Uncontrolled Spot Fire or Fire Front
- Creeping Fire - Smoker, 12" Flame Length or Less
- Hot Spot - Significant Priority
- Hot Spot - Moderate Priority

Dolan Fire

CA-LPF-002428

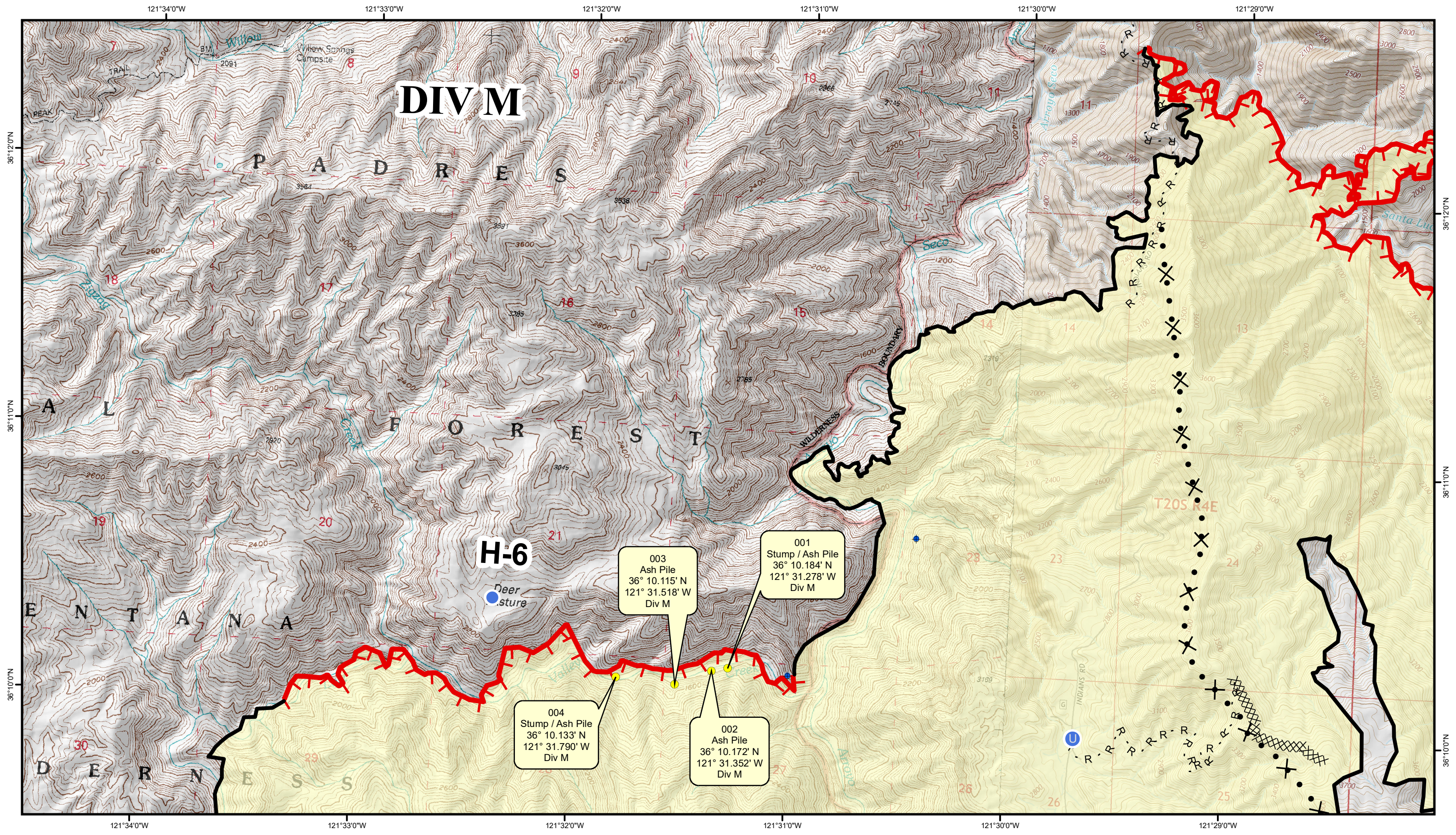
Infrared Data captured on 20201005 @ 1430 & 20201007 @ 1410

Datum WGS 1984

Div R
Infrared Detail Map



Oct. 7, 2020

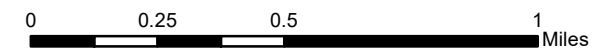


- Active Fire - Uncontrolled Spot Fire or Fire Front
- Creeping Fire - Smoker, 12" Flame Length or Less
- Hot Spot - Significant Priority
- Hot Spot - Moderate Priority

Dolan Fire

CA-LPF-002428

Infrared Data captured on 20201005 @ 1430 & 20201007 @ 1410



Datum WGS 1984

Div M
Infrared Detail Map



Oct. 7, 2020



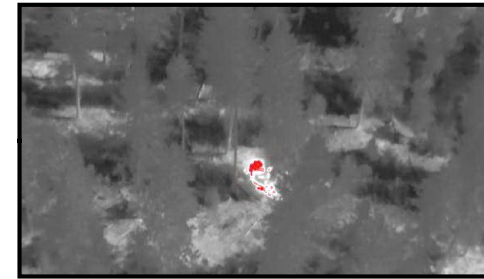
Labeling Details:

Active Fire: Visible Fire



Active Fire

Ash Pile: No Visible flame or smoke but still contains heat.



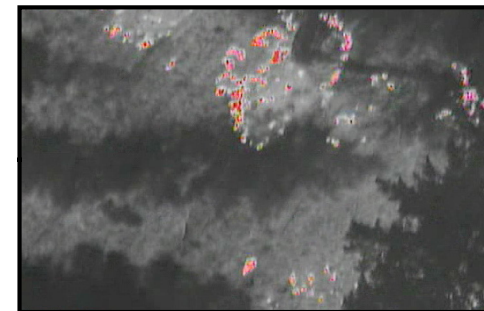
Ash Pile

Creeping Fire: Very small flame lengths but moving.



Creeping Fire

Scattered Heat: Multiple heat locations scattered over a large area.



Scattered Heat

Slash: Multiple fallen trees either smoking or containing visible fire.



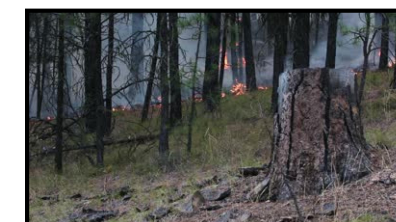
Slash

Tree: Single fallen tree either smoking or containing visible fire.

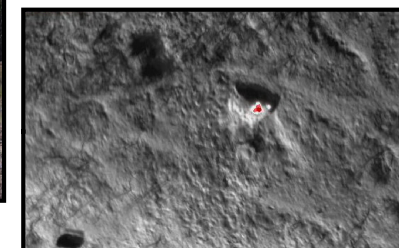


Tree

Stump or Rootball: Stump left over from a fallen tree or tree/brush root system still smoking or containing heat.



Stump



Root Ball



Active Fire - Uncontrolled Spot Fire or Fire Front



Creeping Fire - Smoker, 12" Flame Length or Less



Hot Spot - Significant Priority



Hot Spot - Moderate Priority

GPS Coordinates are in Degrees & Decimal Minutes (DD° MM.mmmm')

Datum is WGS 84 (unless otherwise noted on map)

Ex. 34° 04.405
 -118° 14.414

Date and Time is when the intelligence was gathered

Heat Sources are normally acquired within a 400 foot strip, 200 feet inside and 200 feet outside the fire line or fire front (wider strips are flown as necessary and are labeled on infrared map).

LIMITS TO INFRARED AND GPS INFORMATION

Under the best conditions heat sources less than 4 to 6 inches in diameter are inconsistent.

Very Small Heat sources under heavy canopy or in large rock piles are difficult to verify.

Accuracy of GPS coordinates is within 50 feet, 90% of the time.

Note: Ash Field is a large area with multiple Ash Piles