

WEDNESDAY

INCIDENT ACTION PLAN DOLAN FIRE

CA-LPF-002428

P5NF6M (0507)



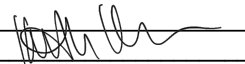
Operational Period:

10/14/2020 0700
to
10/15/2020 0700



This page intentionally left blank

ORGANIZATION ASSIGNMENT LIST (ICS 203)

1. Incident Name: Dolan Fire		2. Operational Period: Date From: 10/14/2020 Time From: 0700		Date To: 10/15/2020 Time To: 0700	
3. Incident Commander(s) and Command Staff:			7. Operation Section:		
IC/UC's	Kevin Harrison, Shane Mooney (t), Vincent Montes (t)	Operations	Harold 'Magoo' Cook, Jack Bradley		
Deputy	Steven Berube	Planning Ops	Kenneth Martin, Kevin McElroy (t)		
Safety Officer	Stuart Carver, James Martin (t)	Day Ops	Christopher Sweeney (t)		
Information Officer	Brady Wehrum, Ken Furuno, Eric Howard (t)				
Liaison Officer	Richard Sweeney, Anthony Pasquin				
4. Agency/Organization Representatives:		Branch			
Agency/Organization	Name	Division/Group	A/Z/K/F	Robert Thibault	
Los Padres AREP	Ken Gebhardt, Nick Larson	Division/Group	Y/X	Matthew McDonald	
Los Padres AREP COVID Advisor	Charles "CJ" Woodard	Division/Group	W/S/R	Steven Gentiluomo	
Big Sur Fire Dep.	Matt Harris	Division/Group	M/O/P	Peter Stephenson, Timothy Wodicka (t)	
Fort Hunter Liggett	Jeff Manetti	Division/Group	SUPPRESSION REPAIR	Elijah Coleman, Kevin Condon (t)	
Monterey Sheriff	Maoirriano	Division/Group			
CHP	M. Olta, John Yerace	Division/Group			
CA State Parks	Matthew Khalar	Division/Group			
PG&E	Geoff Money	Division/Group			
		Division/Group			
		Division/Group			
		Division/Group			
		Division/Group			
		Division/Group			
		Division/Group			
		Division/Group			
5. Planning Section:		Branch			
Chief	David Ritchie, Keith Kern (t)	Division/Group			
Resource Unit	Anthony Watts, Sultan Jahangir	Division/Group			
Situation Unit	Fred Carlson (t), Stephen King (t)	Branch			
Documentation Unit	Michael Belmonte (t), Ronald Shen (t)	Division/Group			
GISS	Christopher Kirwan (t), Gerard McManus (t)	Division/Group			
FBAN		Division/Group			
IMET	Kurt VanSpeybroeck, Sven Nelaimischkies (t)	Air Operations Branch			
Training Tech Spec		Air Operations Branch Director			
ITSS	Kristian Prior, John Costello (t), Jude VandenHeuvel (t)	Air Support Group Supervisor			
Lead READ	Kevin Keeler	Tusi Helibase Manager		John Kaisersatt	
6. Logistics Section		8. Finance/Administration Section:			
Chief	Robert Merkle III, Jamie Cople	Chief	Robert Schuller		
Supply Unit	Brian Fitzpatrick	Time Unit	Christopher Raimondi		
Facilities Unit	Kyle DeMasters, Michael Swift (t)	Comp/Claims Unit			
Ground Support Unit	William Kirkham, Matthew Madison (t)	Cost Unit	Darin Colby		
Communications Unit	Robert Leonard, Frank Giaquinto (t), Sean O'Grady, Brian Ferrera (t)	Personnel Time	Pam Killingsworth, Daniel McCarren		
Medical Unit	Jasmin Howard (t), Andrew Gabor (t)	Equipment Time	William Herbst, Stephanie Bartholomew, Araceli Nahas		
Food Unit	Scott Worontzoff, Joseph Chiodi (t)				
COVID	Jim Emerson				
Prepared By: Name:	Keith Kern	Position/Title:	PSC (t)	Signature:	
ICS 203		Date/Time:	10/13/2020 2300 hours		



Fire Weather Forecast

WEDNESDAY, OCTOBER 14, 2020



FORECAST NO: 53
PREDICTION FOR: Wednesday
SHIFT DATE: October 14, 2020
ISSUED: 1900 Tuesday, Oct 13, 2020

NAME OF FIRE:
UNIT:
Incident Meteorologist:

Dolan
USFS/LPNF
KVS/SBN(T)
(240) 778-5301

DISCUSSION: High pressure continues across the Pacific NW into northern California with warming and continued dry conditions across the Dolan Fire area. Northeast winds will be strong this morning with humidity very low today. Temperatures will be a few degrees warmer than Tuesday.

TODAY:

- WEATHER: Coast: Mostly sunny.
- WIND (20 FT): Coast: Ne 2-5 mph gust 8 mph.
Inland: NE wind 4 – 8 mph gust 16 mph. Above 2000 ft NE 6-12 mph gust 30 mph in the morning.
Arroyo Seco: WSW 6-8 mph then ENE 10 mph gusting to 15 mph.
- MAX TEMPERATURES: Highs 70-80 near the coast 92 – 98 inland and Arroyo Seco. 89-97 above 2000 feet MSL
- MIN RH: 40% near the coast. 10% inland.
- MARINE LAYER: 500 feet

TONIGHT:

- WEATHER: Coast: Mostly clear.
 - WIND (20 FT): Coast: Northeast 2-4 mph.
Inland: NE wind 2-4 mph. Above 2000 ft: NNE wind 3-6 mph gusting to 12 mph.
 - MIN TEMPERATURES: 52-60 near the coast, 53-61 inland and Arroyo Seco, 64-75 above 2000 feet MSL.
 - MAX RH: 70-90% near the coast. Inland areas and Arroyo Seco, 30-50% with 20-30% higher terrain.
 - MARINE LAYER: 500 feet
-

THURSDAY:

- WEATHER: Coast: Mostly sunny.
 - WIND (20 FT): Coast: NW 2-4 mph gust 6 mph.
Inland: E wind 2 – 4 mph gust 8 mph. Above 2000 ft E 3-5 mph gust 11 mph.
Arroyo Seco: WSW 6-8 mph then ENE 10 mph gusting to 15 mph.
 - MAX TEMPERATURES: Highs 60-70 near the coast 92 – 100 inland and Arroyo Seco. 89-97 above 2000 feet MSL
 - MIN RH: 50% near the coast. 10-20% inland.
 - MARINE LAYER: 500 feet
-

Planning forecast: The warming and drying trend is expected to continue into the end of the week with temps above 100 degrees inland in the usual warmer locations Friday. Occasional breezy offshore winds may inhibit significant marine layer influence as warmer and drier condition impacts the area to along the coast by Friday, with the marine layer becoming more dominant along the coast this weekend.

- Friday... Mostly sunny. Max Temp: 96 – 103 inland; cooler at coast. NW wind 3 - 6 mph gusting 12 mph at ridgelines.
- Saturday...Partly Cloudy. Max Temp: 90-98 inland; cooler at the coast. W wind 3 - 5 mph gusting 11 mph at ridgelines.
- Sunday...Partly Cloudy. Max Temp: 82-90 inland; cooler at the coast. NW wind 3 – 5 mph gusting 11 mph at ridgelines.

Sunrise: 7:13 AM

Sunset: 6:30 PM

ASSIGNMENT LIST (ICS 204 WF)

CONTROLLED UNCLASSIFIED INFORMATION//BASIC

1. Incident Name:	2. Operational Period:	3. Branch	Division
Dolan Fire	Date From: 10/14/2020 Date To: 10/15/2020 Time From: 0700 Time To: 0700		A/Z/K/F
4. Operations Personnel:		Page 1 of 1	

Operations Section Chief: Harold 'Magoo' Cook, Jack Bradley	Day Ops: Christopher Sweeney (t)
Branch Director:	Branch Safety:
Division/Group Supervisor: Robert Thibault	Air Attack:

Resource Identifier	ALS	LWD	Leader	Personnel	Request #	Hours	Report To	Return To
Resources in BOLD are identified as IA resources								
CRW2 C-114 SANTA LUCIA		10/16	GUZMAN, MATTHEW	20	C-114	0700-1900	Big Sur Spike	Big Sur Spike
EXCA YLU0172		10/21	PARKER, KACY	2	E-568	0700-1900	Pacific Valley	Pacific Valley
SOFR ROEBER		10/15	ROEBER, SCOTT	1	O-1030	0700-1900	Pacific Valley	Pacific Valley
ATASCADERO AMB 4X4	X	10/22	ROBERTS, BRANDON	2	E-573	0700-1900	Big Sur Spike	Big Sur Spike
EMTF CHILD		10/22	CHILD, ROBERT	1	O-1203	0700-1900	Big Sur Spike	Big Sur Spike
REAF LEIS		10/22	LEIS, SHERRY	1	O-1192	0700-1900	Pacific Valley	Pacific Valley
REAF EDDINGS		10/22	EDDINGS, BENJAMIN	1	O-1191	0700-1900	Pacific Valley	Pacific Valley
REAF DOLAN		10/22	DOLAN, MICHAEL	1	O-1206	0700-1900	Pacific Valley	Pacific Valley
ARCH RAY		10/22	RAY, MOLLY	1	O-1216	0700-1900	Pacific Valley	Pacific Valley

6. Work Assignments:

TASK: Restore roads, dozer lines and drainage systems. Reduce visual impacts of the fire lines. Monitor the fires edge.

PURPOSE: Minimize potential for erosion and sediment delivery to water courses.

END STATE: To restore landscape back to prefire conditions as reasonably possible.

RISK ASSESSMENT: Stay alert for drivers in the fire area and in restricted areas. Watch for snags and rollout onto roads and working around heavy equipment.

7. Special Instructions:

- All medical resources MUST check in with Dolan Communications once in place, see medical plan for REMS availability.
- Ambulances will be located on paved roads for patient transport only.
- READs and the BAER Team will check in and out with Division.
- Assume all divisions have Sudden Oak Death Pathogen and clean and disinfect everything. No weed wash is available use a commercial wash station where sump collection is done to prevent the further spread.
- For Mop up and Patrol – Do not go off the road (UXO).
- Utilize Collector to mark all accountable property (pumps, hose, tanks...), attach a picture of the serial number with the LAT and LONG.
- Use call outs when traveling on Nacimiento Ferguson Road.
- INITIAL ATTACK RESOURCES will maintain a state of readiness for response. All responses will be initiated by operations through the divisions. Once the resource is cancelled/released they will return to the incident and notify comms that they are back in their division.

8. Communications

Name	Ch	Function	Rx Freq	Rx Tone	Tx Freq	Tx Tone	Notes
Refer to the Communications plan for TX/RX frequencies. Local forest is responsible for controlling all radio traffic.							

9. Prepared by: Name:	Sultan Jahangir	RESL	Signature:
ICS 204	Date/Time: 10/13/2020	2200	Personnel Count: 30

AIR OPERATIONS SUMMARY
DAY/NIGHT
ICS 220

Prepared By: John Crotty
 AOB

Prepared Date: 10/05/2020

Prepared Time: 1800

1. INCIDENT NAME: Dolan Fire	2. OPS PERIOD DATE: 10/14/2020 through 10/15/2020	START TIME: 0700	END TIME: 0700	SUNRISE: 0704	SUNSET: 1840
-------------------------------------	--	-------------------------	-----------------------	----------------------	---------------------

<p>3. REMARKS (Safety Notes, Hazards, Air Operations Special Equipment, etc.): Track all dipsite locations/number of dips/gallons taken. Track all drop locations/number of drops/gallons dropped. All GPS data to be collected in DEGREES, MINUTES, DECIMAL MINUTES format. AVOID Aerial Application of Retardant/Foam/Agent within 300' of Waterways, Bodies of Water, etc If Retardant/Foam/Agent is dropped within these areas immediately notify the AOB and provide the following information: Lat/Long, estimated number of gallons and a map detailing the area. CAUTION Military Flight Routes CAUTION POWERLINES and SMOKE.</p>	<p>4. Helibase Information: Tusi Helibase: 35 59.687 121 14.202 Seco Helispot: 36 14.1380 121 28.8185</p> <p>5. TFR's: Polygon Shape Altitude: 10,000' MSL NOTAMS: 0/7430 Frequency: 127.0250 http://tfr.faa.gov</p>
--	--


6. PERSONNEL	NAME	PHONE #	7. FREQUENCIES				RX	TX	AM/FM	8. MEDIVAC SHIP INFORMATION	
				TONES	TX	FM	Day:	Night:			
Tusi Helibase/Aviation Contact	John Kaisersatt	805-878-4755						FM	Name:		
			TFR Victor		127.0250		127.0250	AM	CHP H70 Paso Robles Hoist		
			Tusi Advisory		126.2000		126.2000	AM			
			Deck		168.3500		168.3500	FM	Mercy Air 20 (FHL)		
			A/G Command		167.5500		167.5500	FM			
			A/G Tactical		163.1500		163.1500	FM	Cal Star 5 Salinas		
			Fire Service Net		171.5000		164.8250	FM			
								FM	Santa Barbara H308 NVG/ALS Hoist		
								FM			
			CALCORD	(T6)156.7	156.0750		156.0750	FM	H-406 Bear Valley Day Hoist/BLS		
			Air Guard		168.6250		168.6250	FM			

HELICOPTERS

FAA N#	T	MAKE/ MODEL	BASE	STA RT	AVAIL	REMARKS	FAA N#	T	MAKE/MODEL	BASE	START	AVAIL	REMARKS
3RA	1	KMAX	Tusi	0700	0830	Bucket							
527	2	Bell 205 ++	Tusi	0700	0830	EU							
7DP	3	Bell 407	Tusi	0700	0830	Recon/LL/IR							

UAS / FIXED WING

Missions:	Aircraft	AVAIL	Departure Point	Destination
Bucket Support	ALL	0830	Tusi	Fire
RECON	ALL	0830	Tusi	Fire
Retardant	TBD	TBD	TBD	As requested.
MEDIVAC		24 Hr.		Request through Communication on Command Repeater. Give location: lat/long if known, and current visibility. Check Medical Plan/IAP.
Repeater			Tusi	As requested.
Cargo	TBD	0830	Tusi	All sling logistic request due to communications by 1200.
Initial Attack	TBD	0830	Tusi	Provide IA Helitack and loan copters on request.
Air Attack	TBD	TBD	TBD	On request. Coordinate with Dispatch.
IR/Mapping	TBD	0830	TBD	Type 3

INCIDENT RADIO COMMUNICATIONS PLAN I-205				1. INCIDENT NAME		2. DATE/TIME PREPARED		3. OPERATIONAL PERIOD DATE/TIME			
				DOLAN FIRE		10/13/2020 1700		10/14/2020 0700 to 10/15/2020 0700			
4. BASIC RADIO CHANNEL UTILIZATION											
Ch #	Function	Channel Name	Assignment	RX Freq	NW	RX Tone/NAC	TX Freq	N/W	TX Tone/NAC	Mode Analog (A) Digital (D) Mixed (M)	Remarks
1	COMMAND	LPF AN4	ALL DIVS	171.5500	N	CSQ	164.1500	N	136.5	A	LPF ADMIN NET ALDER PK T4
2	COMMAND	LPF AN6	ALL DIVS	171.5500	N	CSQ	164.1500	N	156.7	A	LPF ADMIN NET PIEDRAS BLANCAS T6
3	COMMAND	LPF AN8	ALL DIVS	171.5500	N	CSQ	164.1500	N	103.5	A	LPF ADMIN NET CONE PK T8
4	COMMAND	LPF AN10	ALL DIVS	171.5500	N	CSQ	164.1500	N	107.2	A	LPF ADMIN NET CHEWS RIDGE T10
5	COMMAND	LPF AN13	ALL DIVS	171.5500	N	CSQ	164.1500	N	141.3	A	LPF ADMIN NET ANDERSON T13
6	COMMAND	LPF AN15	ALL DIVS	171.5500	N	CSQ	164.1500	N	162.2	A	LPF ADMIN NET CALANDRIA T15
7	TACTICAL	LPF T4	SUPPRESSION REPAIR	163.7125	N	CSQ	168.7125	N	CSQ	A	LPF TACTICAL
8	TACTICAL	NIFC T2	ALL DIVS	168.2000	N	CSQ	168.2000	N	CSQ	A	NIFC T2
9											
10											
11											
12											
13											
14											
15	MEDEVAC A/G	CALCORD	ALL DIVS	156.0750	N	156.7	156.0750	N	156.7	A	MEDICAL EVAC EMERGENCIES ONLY
16	AIRGUARD	GUARD 18	ALL DIVS	168.6250	N	CSQ	168.6250	N	110.9	A	EMERGENCIES ONLY
5. Special Instructions:											
											
6. I-205 Prepared By: Communications Unit Leader				Name: Robert Leonard				Signature:			

MEDICAL PLAN ICS 206		1. INCIDENT NAME Dolan Fire		2. DATE PREPARED 10/13/2020		3. TIME PREPARED 1600		4. OPERATIONAL PERIOD 10/14/2020 - 10/15/2020 0700 – 0700			
5. INCIDENT MEDICAL AID STATIONS											
MEDICAL AID STATIONS				LOCATION				PARAMEDICS			
								YES		NO	
Medical Unit				ICP						X	
6. TRANSPORTATION											
A. AIR AMBULANCES											
NAME			LOCATION			PHONE			PARAMEDICS		
									YES		NO
911 Provider Day-Night Mission			Variable - (40 min ETA)			Los Padres ECC 805-961-5727			X		
CHP H70 Hoist Day / Variable Night			Paso Robles, CA - (20 min ETA)			Paso Robles ECC 805-239-3553			X		
Mercy Air Night			FHL, CA - (10 min ETA)			FHL ECC 831-386-2526			X		
B. GROUND AMBULANCES & REM TEAMS											
NAME			LOCATION				PARAMEDICS				
							YES		NO		
AMR 1			Sand Dollar ICP				X				
AMR 2			DP 72				X				
REMS 1			DP 59				X				
REMS 2			Tusi Helibase						X		
Atascadero Ambulance			Anderson Peak Spike Camp				X				
7. HOSPITALS											
NAME		ADDRESS		TRAVEL TIME		PHONE		HELIPAD		BURN CTR	
				AIR		GRND		YES		NO	
CHOMP LVL 3		23625 Holman Hwy Monterey, CA		N/A		30 Min		831-624-5311		X	
Mee Memorial LVL 3		300 Canal St King City, CA		15 Min		60 Min		831-385-6000		X	
Santa Clara Valley Med Ctr LVL 1		751 S. Bascom Ave.. San Jose, CA NN37 18.7713 X 121 55.9960		45 Min		90 Min		408-885-5000		X	
Natividad Medical Center LVL 2		1441 Constitution Blvd. Salinas Ca N36 41.8002 X W121 37.9853		25 Min		60 Min		831-755-6268		X	
Community Regional Med Ctr LVL 1		2823 Fresno St. Fresno, Ca N36 44.5702 X W119 47.0913		90 Min		180 Min		559-459-7401		X	
Big Sur Health Center Medical Clinic		46968 CA-1 Big Sur, CA 93920		N/A		60 Min		831-667-2580		X	
8. MEDICAL EMERGENCY PROCEDURES											
<u>LINE-EMERGENCY MEDICAL DAY/NIGHT PLAN:</u>						<u>LINE "NON-EMERGENCY INCIDENT" PLAN:</u>					
<ul style="list-style-type: none"> - Crew Supervisor to contact Division Supervisor/Operations with: <ul style="list-style-type: none"> • Patient Complaint, Condition and Location via Tactical or Command frequency. Priority 1/Red & 2/Yellow Patients trigger Incident within Incident (IWI). - Division Supervisor/Operation contacts Dolan Communications: <ul style="list-style-type: none"> • Division Supervisor or POC* will run "Medical –Emergency" on the Command frequency. • Division Supervisor or POC* to use "Medical Incident Report" worksheet on back of this page or back of IRPG. • Dolan Communication contacts Medical Unit Leader on the Command frequency or camp frequency. <p>POC* (Point of Contact) and/or Operations</p>						<ul style="list-style-type: none"> - Crew Supervisor to contact Division Supervisor with: <ul style="list-style-type: none"> • Patient Complaint, Condition and Location via Tactical or Command frequency. Priority 3/Green Patients do not trigger Incident within Incident (IWI). - Division Supervisor contacts Dolan Communications: <ul style="list-style-type: none"> • Division Supervisor or POC* will run "Non-Emergency Incident" on the Command frequency. • Division Supervisor or POC* will use "Medical Incident Report" worksheet on the back of this page or back of IRPG. • Dolan Communications contacts Medical Unit Leader on the Command frequency or camp frequency. <p><u>IN-CAMP 24 HOUR MEDICAL PLAN:</u></p> <ul style="list-style-type: none"> • Contact Incident Communications with: Patient Complaint, Condition, and Location via Logs Net or Command frequency. 					
ICS 206		9. PREPARED BY: (Medical Unit Leader) Jasmin Howard MEDL (t)				10. REVIEWED BY: (Safety Officer) Tod Lemieux SOFR					

COVID-19 Best Practices / Mitigation

Minimize risk and limit exposure to COVID-19 by daily screening, minimizing large group settings, social distancing, wearing face coverings, hand washing, and practicing module of one concept.

At the beginning of the shift, supervisors should remind their personnel to self-screen for symptoms.

This document to be placed in the daily IAP

WILDLAND FIRE COVID-19 SCREENING TOOL

Today or in the past 24 hours, have you had any of the following symptoms¹?

Symptom
Cough more than expected?
Shortness of breath or difficulty breathing?
Fever? Chills?
Muscle pain, outside your normal for firefighting?
Sore throat?
New loss of taste or smell?
Fatigue, outside your normal for firefighting?
Headache, outside your normal for firefighting?
Congestion or runny nose, outside your normal for firefighting?
Nausea or vomiting
Diarrhea
<i>* Take temperature with no-touch thermometer, if available *</i>

¹Symptoms of Coronavirus

<https://www.cdc.gov/coronavirus/2019-ncov/symptoms-testing/symptoms.html>

Do your part to minimize your risk of exposure and limit the spread COVID-19.

Public Considerations

- ⇒ Wear a face covering when in public.
- ⇒ Wash your hands often.
- ⇒ Use hand sanitizer after pumping gas.
- ⇒ Use hand sanitizer prior to getting into your vehicle after visiting the grocery store or a restaurant.
- ⇒ Set the example while in the public eye.

*Keep in mind that fire camp is in a city with a populous and the potential for the COVID virus to be present is greater.

If you answered Yes to these symptoms, report it to your supervisor immediately, self-isolate away from other people until given direction and call **MEDICAL**.



COVID-19 OPERATIONAL FLOWCHART

PERSONNEL SHALL BE SCREENED FOR S&S OF COVID-19 AT CHECK-IN ← *ALL SUPERVISORS SHALL MONITOR THEIR PERSONNEL*

- ALL PERSONNEL SHALL:**
- PRACTICE PHYSICAL DISTANCING
 - WEAR A MASK WHEN LESS THAN 6' FROM OTHERS
 - SHALL SELF-MONITOR FOR S&S
 - WASH HANDS OFTEN / USE HAND SANITIZER
 - AVOID FACIAL CONTACT WITH YOUR HANDS
 - NOTIFY THE MEDICAL UNIT OF ANY FLU-LIKE S&S
 - DO NOT SHARE TOOLS / EQUIPMENT

- SIGNS & SYMPTOMS INCLUDE:**
- CHILLS OR FEVER > 100.4°
 - COUGH, AND/OR SHORT OF BREATH
 - LOSS OF TASTE OR SMELL, SORE THROAT
 - CONGESTION, RUNNY NOSE
 - FATIGUE, HEADACHE, BODY ACHES
 - NAUSEA OR VOMITING
- (Do not report to your assignment if you are sick)*

- PERSONNEL WHO DEVELOP FLU-LIKE SYMPTOMS SHALL:**
- NOTIFY THEIR IMMEDIATE SUPERVISOR
 - REPORT TO THE MEDICAL UNIT FOR EVALUATION

- MEDICAL UNIT WILL:**
- EVALUATE PERSONNEL / MAKE RECOMMENDATIONS
 - TRACK PERSONNEL FOR THE INCIDENT
 - CONTACT-TRACING
 - MAKE NECESSARY *TEAM & FOREST* NOTIFICATIONS

- PERSONNEL EXPERIENCING FLU-LIKE SYMPTOMS SHALL BE TESTED:**
- SEEK MEDICAL CARE FOR FURTHER TESTING (TESTING SITES PROVIDED BY THE MEDL)
 - AFTER TESTING IS COMPLETE, PERSONNEL MAY HAVE TO QUARANTINE WHILE AWAITING RESULTS

- IF COVID-POSITIVE:**
- PERSONNEL SHALL ISOLATE AT APPROVED LOCATION UNTIL DEMOB'D (LOCATION PROVIDED BY THE MEDL)

- IF NEGATIVE:**
- FOLLOW AGENCY SPECIFIC GUIDELINES
 - OR, PER CDC, NO FURTHER ACTION REQUIRED

- SUPERVISOR SHOULD:**
- MAKE NOTIFICATIONS TO HOME UNIT
 - BEGIN AGENCY WORK-COMP PROCESS
 - COMPLETE DEMOB PROCESS

PERSONNEL: CONTINUE TO SELF -MONITOR
(Do not report to your assignment if you are sick)
 IF PERSONNEL IS TOO SICK, NOTIFY SUPERVISOR

IMT WILL PROVIDE DIRECTION AND SUPPORT UNTIL RECEIVED BY THE HOME UNIT

FDNY IMT - MEDICAL UNIT WILL TRACK AND MONITOR ALL COVID RELATED EXPOSURES



IN-CAMP ISOLATION FLOWCHART:

- IN-CAMP GUIDELINES AS FOLLOWS:**
- PERSONNEL SHALL ISOLATE AT APPROVED LOCATION ONCE EVALUATED BY MEDICAL STAFF
 - MEDICAL UNIT WILL MONITOR PERSONNEL UNTIL DEMOBILIZED FROM THE INCIDENT

SHOULD PERSONNEL'S HEALTH STATUS DETERIORATE, CONTACT THE MEDICAL UNIT ASAP

- MEDICAL UNIT SHALL:**
- CONTACT COMMUNICATIONS - ARRANGE FOR TRANSPORTATION TO HOSPITAL IF NEEDED
 - CALL THE IMMEDIATE SUPERVISOR
 - MAKE NECESSARY TEAM & FOREST NOTIFICATIONS

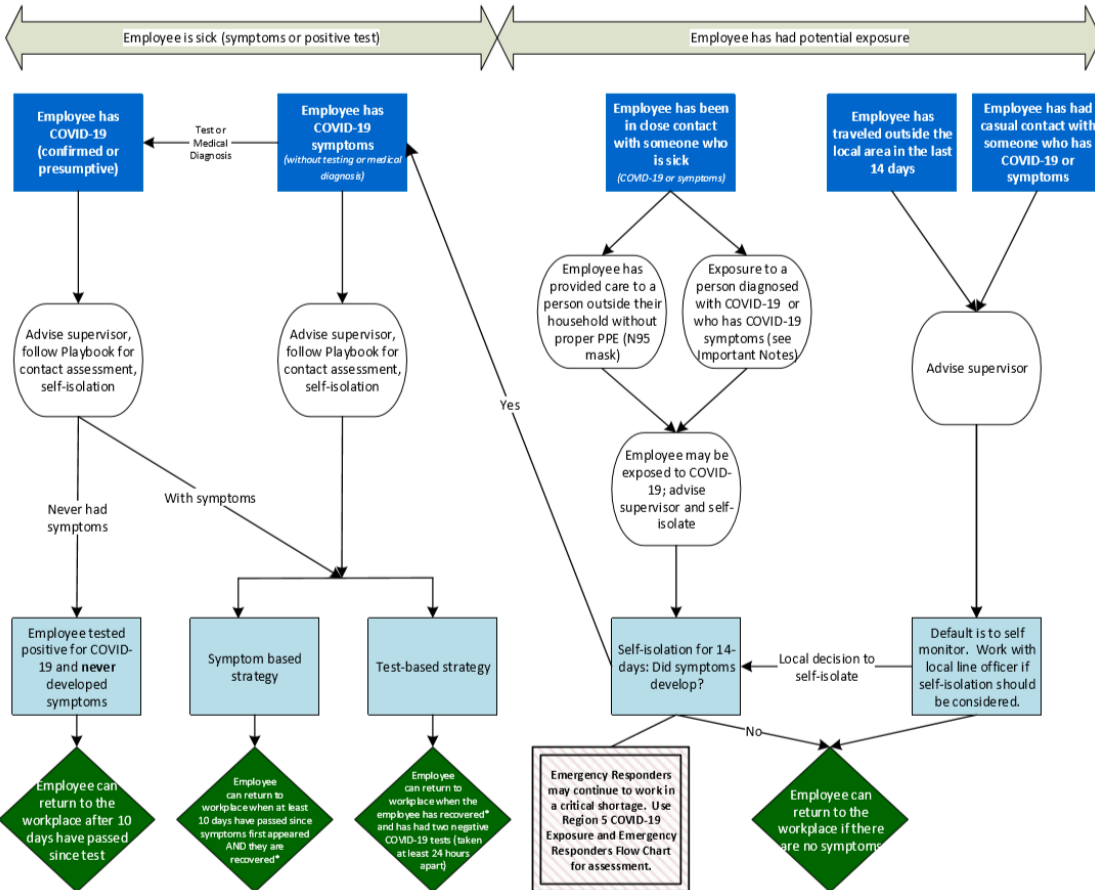
FEDERAL EMPLOYEES SHALL REFER TO REGION 5 — COVID-19 ACTION PROCESS FOR AGENCY SPECIFIC GUIDANCE



Region 5 Pacific Southwest Region COVID-19 Response Action Process

August 20, 2020

COVID-19 Response and Employee Notification



Important Notes:

- * Recovered is defined as 10 days since symptoms first appeared AND 24 hours with no fever without the use of fever-reducing medicines AND other symptoms of COVID-19 are improving.
- Symptoms of COVID-19 include cough, shortness of breath, trouble breathing, fever, chills, repeated shaking with chills, muscle or body aches, headache, sore throat, new loss of taste or smell, congestion or runny nose, nausea or vomiting, or diarrhea.
- Contact Assessment should be conducted to help determine potential exposure of additional employees; conduct assessment for the 2-day period before illness onset or test date of sick employees, whichever came first.
- Close contact is defined as less than 6 feet, for at least 15 minutes with or without face coverings/masks. Casual contact is defined as less than 6 feet for less than 15 minutes or more than 6 feet for more than 15 minutes.
- Any employee in "close contact with someone who is sick" may return to the workplace if the sick person is tested for COVID-19 and the test is negative.
- Contact with exposed individuals is classified as secondary contact and does not typically require self-isolation unless the exposed individual tests positive.
- You do not need to self-isolate unless you meet one of the criteria identified.
- Always follow the advice of a medical provider, if given, including any need for isolation or clearance for return-to-duty.

This document is subject to change based on CDC guidance.

DOLAN FIRE SAFETY MESSAGE

INCIDENT: Dolan Fire

DATE: October 14, 2020

TIME: 0700-0700

Major Hazards and Risks:

- **DRIVING** – Drive defensively, keep within posted speed limits and avoid nighttime driving.
- **STEEP TERRAIN AND ROLLING MATERIALS** – Loose boulders and timber from above.
- **ENSURE LCES** - The potential exists for isolated burning of interior fuels.
- **DEHYDRATION** – Consume at least 1 quart of water per hour during periods of hard work.
- **COMPLACENCY AND FATIGUE**- Stay focused, stay rested, and stay ready.
- **SNAGS AND FIRE WEAKENED TREES** – Look up, down and around. Size up all hazard trees.
- **COVID**– Use COVID precautions, including social distancing and face coverings when practical.
- **POISON OAK** – Avoid and wash affected skin as soon as possible to limit rash and spread.
- **ASH PITS** – Warning signs include white ash, hovering insects, translucent smoke and sunken depressions.
- **UNEXPLODED ORDNANCE** – Stay on road system while on Fort Hunter Liggett. If found, STAY AWAY and clearly mark the area.

The Forest will Recover



Fires are part of the natural life cycle of the forest, and most often help the **forest** to renew itself. In just under 60 days into this fire, the forest is starting to show signs of life and regrowth.

Take a moment, look at the people standing next to you. It took a lot longer than 60 days to grow them, and they cannot be replaced. Work safely and look out for each other. Special thanks to Matt from Santa Lucia.

DEHYDRATION:

If you're thirsty, you've waited too long to drink water. You need to drink a minimum of 32 ounces of water per hour during the day shift.

FACT:

- If you lose 3 % of your hydration, you will lose 20% of your energy.
- If you lose 5% of your hydration, you lose 50% and you will need to visit medical.

HYDRATE! HYDRATE! HYDRATE!

Fatigue Awareness

Monitor incident personnel for signs of fatigue; and adhere to work-rest guidelines, as feasible. Working 16 hour days for multiple days can result in a loss of situational awareness and sometimes an increased sense of complacency. Don't let down your guard!!! Get the proper rest when you end each shift and continue to drink plenty of water and eat healthy meals. It is only early July! We could be in for a long season of long shifts. GET YOUR REST when you can.



Legend

- Muster Site
- Restroom
- Dumpster
- Lot
- Temp Structure
- Evacuation Route

Evacuation Plan

DOLAN
CA-LPF-002428

1 inch equals 10 miles
Scale: 1:623,156

Coordinate System: WGS 1984 UTM Zone 10N



VIRTUAL TIME



- Scan the QR code above with your smartphone
- Upload a picture of your shift tickets
- Please add the following in the **SUBJECT LINE**:
 - Resource Number, Last Name/Crew Name
(example: O-12.34 Smith/C123 Crew Name)
- Send email to: **2020.Dolan.Finance@firenet.gov**

- ✓ Please indicate breaks on all of your shift tickets.
- ✓ Please include your resource # on all documents submitted, including receipts.
- ✓ If possible, please be consistent with the method in which you submit your documents.
- ✓ A justification in remarks is required for federal employees claiming hazard pay on CTRs. For example: "Working in Division ___ with an uncontrolled fire line."
- ✓ Please indicate R&R days if taken.
- ✓ Please turn in both pink and blue shift tickets.

10/15/2020

TENTATIVE RELEASE

DOLAN US-CA-LPF-002428

EQUIPMENT

E-564 0000 (ENG6) PVT-ENG6-KL FARMS

OVERHEAD

O-967 0730 (DOCL) BELMONTE, MICHAEL J
O-975 0730 (IMET) VAN SPEYBROECK, KURT
O-1138 0800 (RCDM) VALENZUELA, JULIAN G
O-1143 0930 (GISS) PINA, MONICA RENAE

10/16/2020

TENTATIVE RELEASE

DOLAN US-CA-LPF-002428

CREWS

C-113 1000 (HC2) SUNDOWNERS

OVERHEAD

O-1170 0000 (HEQB) SHIFFRAR, MICHAEL
O-1030 0900 (SOFR) ROEBER, SCOTLAND A
O-1123 0915 (PSCT) WHITMIRE, MARTIN
O-1087 0930 (PSCT) WESTERFIELD, KERRY

Pacific Southwest Region

Peer Support/Critical Incident Stress Management

Our wildland firefighters and support employees are resilient under stress, shown time and again in our daily jobs. We do great; however, stress is cumulative. And 2020 has pushed us and our coping mechanisms to the limit.

Here are a few reminders for employees working under these stressful conditions:

- Eat Right
- Stay Hydrated
- Get Plenty of Rest
- Connect with your support system (family, friends, co-workers...)
- Reach out for additional help if needed... (Peer Support, Clinician Services, Spiritual, Employee Assistance Program, etc.)

CISM Coordinators/Peer Support and a Clinician will be onsite today.

We want to hear from you and we will be visiting your incident...how are you doing? How is your crew doing? What helps maintain resiliency? What are your plans for recuperation when the fires go out? How can we help? We have been so operational this year, with COVID-19 mitigations and fire suppression, are your needs being met in regards to crisis management? Would you or your crew or unit benefit from follow-up support?

Connect with us today or call anytime.

Wendy Flannery, R5 CISM/CAP Coordinator 209-283-4552
Tessa Chicks, R5 Deputy CISM/CAP Coordinator 360-982-8220

Medical Incident Report

FOR A NON-EMERGENCY INCIDENT, WORK THROUGH CHAIN OF COMMAND TO REPORT AND TRANSPORT INJURED PERSONNEL AS NECESSARY.

FOR A MEDICAL EMERGENCY: IDENTIFY ON SCENE INCIDENT COMMANDER BY NAME AND POSITION AND ANNOUNCE "MEDICAL EMERGENCY" TO INITIATE RESPONSE FROM IMT COMMUNICATIONS/DISPATCH.

Use the following items to communicate situation to communications / dispatch.

1. CONTACT COMMUNICATIONS / DISPATCH (Verify correct frequency prior to starting report)

Ex: "Communications, Div. Alpha. Stand-by for Emergency Traffic."

2. INCIDENT STATUS: Provide incident summary (including number of patients) and command structure.

Ex: "Communications, I have a Red priority patient, unconscious, struck by a falling tree. Requesting air ambulance to Forest Road 1 at (Lat./Long.) This will be the Trout Meadow Medical, IC is TFLD Jones. EMT Smith is providing medical care."

Severity of Emergency / Transport Priority	<input type="checkbox"/> RED / PRIORITY 1 Life or limb threatening injury or illness. Evacuation need is IMMEDIATE <i>Ex: Unconscious, difficulty breathing, bleeding severely, 2° – 3° burns more than 4 palm sizes, heat stroke, disoriented.</i> <input type="checkbox"/> YELLOW / PRIORITY 2 Serious Injury or illness. Evacuation may be DELAYED if necessary. <i>Ex: Significant trauma, unable to walk, 2° – 3° burns not more than 1-3 palm sizes.</i> <input type="checkbox"/> GREEN / PRIORITY 3 Minor Injury or illness. Non-Emergency transport <i>Ex: Sprains, strains, minor heat-related illness.</i>	
Nature of Injury or Illness & Mechanism of Injury		<i>Brief Summary of Injury or Illness (Ex: Unconscious, Struck by Falling Tree)</i>
Transport Request		<i>Air Ambulance / Short Haul/Hoist Ground Ambulance / Other</i>
Patient Location		<i>Descriptive Location & Lat. / Long. (WGS84)</i>
Incident Name		<i>Geographic Name + "Medical" (Ex: Trout Meadow Medical)</i>
On-Scene Incident Commander		<i>Name of on-scene IC of Incident within an Incident (Ex: TFLD Jones)</i>
Patient Care		<i>Name of Care Provider (Ex: EMT Smith)</i>

3. INITIAL PATIENT ASSESSMENT: Complete this section for each patient as applicable (start with the most severe patient)

Patient Assessment: See IRPG page 106

Treatment:

4. TRANSPORT PLAN:

Evacuation Location (if different): (Descriptive Location (drop point, intersection, etc.) or Lat. / Long.) Patient's ETA to Evacuation Location:

Helispot / Extraction Site Size and Hazards:

5. ADDITIONAL RESOURCES / EQUIPMENT NEEDS:

Example: Paramedic/EMT, Crews, Immobilization Devices, AED, Oxygen, Trauma Bag, IV/Fluid(s), Splints, Rope rescue, Wheeled litter, HAZMAT, Extrication

6. COMMUNICATIONS: Identify State Air/Ground EMS Frequencies and Hospital Contacts as applicable

Function	Channel Name/Number	Receive (RX)	Tone/NAC *	Transmit (TX)	Tone/NAC *
COMMAND					
AIR-TO-GRND					
TACTICAL					

7. CONTINGENCY: Considerations: If primary options fail, what actions can be implemented in conjunction with primary evacuation method? Be thinking ahead.

8. ADDITIONAL INFORMATION: Updates/Changes, etc.

REMEMBER: Confirm ETA's of resources ordered. Act according to your level of training. Be Alert. Keep Calm. Think Clearly. Act Decisively.