

THURSDAY

INCIDENT ACTION PLAN

DOLAN FIRE

CA-LPF-002428

P5NF6M (0507)



Operational Period:

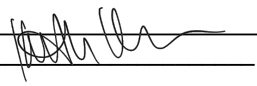
10/15/2020 0700

to

10/16/2020 0700

This page intentionally left blank

ORGANIZATION ASSIGNMENT LIST (ICS 203)

1. Incident Name: Dolan Fire		2. Operational Period: Date From: 10/15/2020 Time From: 0700		Date To: 10/16/2020 Time To: 0700	
3. Incident Commander(s) and Command Staff:			7. Operation Section:		
IC/UC's	Kevin Harrison, Shane Mooney (t), Vincent Montes (t)	Operations	Harold 'Magoo' Cook, Jack Bradley		
Deputy	Steven Berube	Planning Ops	Kenneth Martin, Kevin McElroy (t)		
Safety Officer	Stuart Carver, James Martin (t)	Day Ops	Christopher Sweeney (t)		
Information Officer	Brady Wehrum, Ken Furuno, Eric Howard (t)				
Liaison Officer	Richard Sweeney, Anthony Pasquin				
4. Agency/Organization Representatives:		Branch			
Agency/Organization	Name	Division/Group	A/Z/K/F	Robert Thibault	
Los Padres AREP	Nick Larson	Division/Group	Y/X	Matthew McDonald	
Los Padres AREP COVID Advisor	Charles "CJ" Woodard	Division/Group	W/S/R	Steven Gentiluomo	
Big Sur Fire Dep.	Matt Harris	Division/Group	M/O/P	Peter Stephenson, Timothy Wodicka (t)	
Fort Hunter Liggett	Jeff Manetti	Division/Group	SUPPRESSION REPAIR	Elijah Coleman, Kevin Condon (t)	
Monterey Sheriff	Maoirriano	Division/Group			
CHP	M. Olta, John Yerace	Division/Group			
CA State Parks	Matthew Khalar	Division/Group			
PG&E	Geoff Money	Division/Group			
		Division/Group			
		Division/Group			
		Division/Group			
		Division/Group			
		Division/Group			
		Division/Group			
5. Planning Section:		Branch			
Chief	David Ritchie, Keith Kern (t)	Division/Group			
Resource Unit	Anthony Watts, Sultan Jahangir	Division/Group			
Situation Unit	Fred Carlson (t), Stephen King (t)	Branch			
Documentation Unit	Ronald Shen (t)	Division/Group			
GISS	Christopher Kirwan (t), Gerard McManus (t)	Division/Group			
FBAN		Division/Group			
IMET	Kurt VanSpeybroeck	Air Operations Branch			
Training Tech Spec		Air Operations Branch Director			
ITSS	Kristian Prior, John Costello (t), Jude VandenHeuvel (t)	Air Support Group Supervisor			
Lead READ	Kevin Keeler	Tusi Helibase Manager		John Kaisersatt	
6. Logistics Section		8. Finance/Administration Section:			
Chief	Robert Merkle III, Jamie Cople	Chief	Robert Schuller, Michael Burke (t)		
Supply Unit	Brian Fitzpatrick	Time Unit	Christopher Raimondi		
Facilities Unit	Kyle DeMasters, Michael Swift (t)	Comp/Claims Unit			
Ground Support Unit	William Kirkham, Matthew Madison (t)	Cost Unit	Darin Colby		
Communications Unit	Robert Leonard, Frank Giaquinto (t), Sean O'Grady, Brian Ferrera (t)	Personnel Time	Pam Killingsworth, Daniel McCarren		
Medical Unit	Jasmin Howard (t), Andrew Gabor (t)	Equipment Time	William Herbst, Stephanie Bartholomew, Araceli Nahas		
Food Unit	Scott Worontzoff, Joseph Chiodi (t)				
COVID	Jim Emerson				
Prepared By: Name:	Keith Kern	Position/Title:	PSC (t)	Signature: 	
ICS 203		Date/Time:	10/14/2020 2300 hours		



Fire Weather Forecast

THURSDAY, OCTOBER 15, 2020



FORECAST NO: 54
PREDICTION FOR: Thursday
SHIFT DATE: October 15, 2020
ISSUED: 1900 Wednesday, Oct 14, 2020

NAME OF FIRE:
UNIT:
Incident Meteorologist:

Dolan
USFS/LPNF
KVS/SBN(T)
(240) 778-5301

DISCUSSION: As high pressure has settled into position across the Pacific Northwest, The surface pressure gradient will begin to relax the offshore wind. Expect continued east winds around 5 mph gusting to 15 mph along the higher terrain. Temperatures will likely continue to creep upward toward 100 degrees inland and near 80 along the coast. Minimum relative humidity values are expected to drop into the single digits to around 10 percent inland and above 2000 feet.

TODAY: ...Heat Advisory in effect 11 AM Thursday – 9 PM Friday...

- WEATHER: Coast: Mostly sunny.
- WIND (20 FT): Coast: NE 3-6 gust 10 mph.
 Inland: ESE wind 5 – 8 mph gust 12 mph. Above 2000 ft NE 10 mph gust 15 mph.
 Arroyo Seco: WSW 6-8 mph then ENE 10 mph gusting to 17 mph.
- MAX TEMPERATURES: Highs 70-80 near the coast 97 – 103 inland and Arroyo Seco. 90-100 above 2000 feet MSL
- MIN RH: 50% near the coast. 10% inland and above 2000 feet..
- MARINE LAYER: 500 feet

TONIGHT:

- WEATHER: Mostly clear.
 - WIND (20 FT): Coast: Calm.
 Inland: ENE wind 4-6 mph gusting to 11 mph. Above 2000 ft: N wind 4-7 mph gusting to 12 mph.
 - MIN TEMPERATURES: 52-60 near the coast, 50-58 inland and Arroyo Seco, 65-75 above 2000 feet MSL.
 - MAX RH: 70% near the coast. Inland areas and Arroyo Seco, 30% with 20% higher terrain.
 - MARINE LAYER: 500 feet
-

FRIDAY: ...Heat Advisory in effect today...

- WEATHER: Coast: Mostly sunny.
 - WIND (20 FT): Coast: Light and variable.
 Inland: NE wind 4 – 8 mph gust 11 mph. Above 2000 ft N 4-7 mph gust 12 mph.
 Arroyo Seco: WSW 6-8 mph then ENE 10 mph gusting to 15 mph.
 - MAX TEMPERATURES: Highs 71-77 near the coast 96 – 104 inland and Arroyo Seco. 90-100 above 2000 feet MSL
 - MIN RH: 50% near the coast. 10% inland.
 - MARINE LAYER: 500 feet
-

Planning forecast: The warming trend should diminish this weekend with a return to more normal temperatures for this time of year. Offshore winds will gradually weaken and should eventually give way to more onshore flow with marine layer influence along the coast.

- Saturday...Mostly Sunny. Max Temp: 92-98 inland; cooler at the coast. NE wind 3 - 6 mph gusting 15 mph at ridgelines.
- Sunday...Partly Cloudy. Max Temp: 92-99 inland; cooler at the coast. WNW wind 4 – 5 mph gusting 13 mph at ridgelines.
- Monday...Partly Cloudy. Max Temp: 85-90 inland, cooler at the coast. NW wind 3 – 6 mph gusting 12 mph at ridgelines.

FOR ADDITIONAL WEATHER SUPPORT CONTACT MONTEREY NWS OFFICE AT 831-656-1724.

Sunrise: 7:14 AM

Sunset: 6:29 PM

ASSIGNMENT LIST (ICS 204 WF)

CONTROLLED UNCLASSIFIED INFORMATION//BASIC

1. Incident Name:	2. Operational Period:	3. Branch	Division
Dolan Fire	Date From: 10/15/2020 Date To: 10/16/2020 Time From: 0700 Time To: 0700	A/Z/K/F	

4. Operations Personnel: Page 1 of 1

Operations Section Chief: Harold 'Magoo' Cook, Jack Bradley	Day Ops: Christopher Sweeney (t)
Branch Director:	Branch Safety:
Division/Group Supervisor: Robert Thibault	Air Attack:

5. Resources Assigned:	***Resources in BOLD are identified as IA resources***							
Resource Identifier	ALS	LWD	Leader	Personnel	Request #	Hours	Report To	Return To
CRW2 SUNDOWNERS		10/15	REIMERS, JACK	20	C-113	0700-1900	Pacific Valley	Pacific Valley
CRW2 C-114 SANTA LUCIA		10/16	GUZMAN, MATTHEW	20	C-114	0700-1900	Pacific Valley	Big Sur Spike
EXCA YLU0172		10/21	PARKER, KACY	2	E-568	0700-1900	Pacific Valley	Pacific Valley
ATASCADERO AMB 4X4	X	10/22	ROBERTS, BRANDON	2	E-573	0700-1900	Pacific Valley	Pacific Valley

6. Work Assignments:

TASK: Restore roads, dozer lines and drainage systems. Reduce visual impacts of the fire lines. Monitor the fires edge.

PURPOSE: Minimize potential for erosion and sediment delivery to water courses.

END STATE: To restore landscape back to prefire conditions as reasonably possible.

RISK ASSESSMENT: Stay alert for drivers in the fire area and in restricted areas. Watch for snags and rollout onto roads and working around heavy equipment.

7. Special Instructions:

- All medical resources MUST check in with Dolan Communications once in place, see medical plan for REMS availability.
- Ambulances will be located on paved roads for patient transport only.
- READs and the BAER Team will check in and out with Division.
- Assume all divisions have Sudden Oak Death Pathogen and clean and disinfect everything. No weed wash is available use a commercial wash station where sump collection is done to prevent the further spread.
- For Mop up and Patrol – Do not go off the road (UXO).
- Utilize Collector to mark all accountable property (pumps, hose, tanks...), attach a picture of the serial number with the LAT and LONG.
- Use call outs when traveling on Nacimiento Ferguson Road.
- INITIAL ATTACK RESOURCES will maintain a state of readiness for response. All responses will be initiated by operations through the divisions. Once the resource is cancelled/released they will return to the incident and notify comms that they are back in their division.

8. Communications

Name	Ch	Function	Rx Freq	Rx Tone	Tx Freq	Tx Tone	Notes
Refer to the Communications plan for TX/RX frequencies. Local forest is responsible for controlling all radio traffic.							

9. Prepared by: Name: Sultan Jahangir RESL Signature:

ICS 204 Date/Time: 10/14/2020 2200 Personnel Count: 44

HELICOPTERS

FAA N#	T	MAKE/ MODEL	BASE	STA RT	AVAIL	REMARKS	FAA N#	T	MAKE/MODEL	BASE	START	AVAIL	REMARKS
3RA	1	KMAX	Tusi	0700	0830	Bucket							
527	2	Bell 205 ++	Tusi	0700	0830	EU							
7DP	3	Bell 407	Tusi	0700	0830	Recon/LL/IR							

UAS / FIXED WING

Missions:	Aircraft	AVAIL	Departure Point	Destination
Bucket Support	ALL	0830	Tusi	Fire
RECON	ALL	0830	Tusi	Fire
Retardant	TBD	TBD	TBD	As requested.
MEDIVAC		24 Hr.		Request through Communication on Command Repeater. Give location: lat/long if known, and current visibility. Check Medical Plan/IAP.
Repeater			Tusi	As requested.
Cargo	TBD	0830	Tusi	All sling logistic request due to communications by 1200.
Initial Attack	TBD	0830	Tusi	Provide IA Helitack and loan copters on request.
Air Attack	TBD	TBD	TBD	On request. Coordinate with Dispatch.
IR/Mapping	TBD	0830	TBD	Type 3

INCIDENT RADIO COMMUNICATIONS PLAN I-205				1. INCIDENT NAME	2. DATE/TIME PREPARED	3. OPERATIONAL PERIOD DATE/TIME						
				DOLAN FIRE	10/14/2020 1500	10/15/2020 0700 to 10/16/2020						
4. BASIC RADIO CHANNEL UTILIZATION												
Ch #	Function	Channel Name	Assignment	RX Freq	NW	RX Tone/NAC	TX Freq	NW	TX Tone/NAC	Mode Analog (A) Digital (D) Mixed (M)	Remarks	
1	COMMAND	LPF AN4	ALL DIVS	171.5500	N	CSQ	164.1500	N	136.5	A	LPF ADMIN NET ALDER PK T4	
2	COMMAND	LPF AN6	ALL DIVS	171.5500	N	CSQ	164.1500	N	156.7	A	LPF ADMIN NET PIEDRAS BLANCAS T6	
3	COMMAND	LPF AN8	ALL DIVS	171.5500	N	CSQ	164.1500	N	103.5	A	LPF ADMIN NET CONE PK T8	
4	COMMAND	LPF AN10	ALL DIVS	171.5500	N	CSQ	164.1500	N	107.2	A	LPF ADMIN NET CHEWS RIDGE T10	
5	COMMAND	LPF AN13	ALL DIVS	171.5500	N	CSQ	164.1500	N	141.3	A	LPF ADMIN NET ANDERSON T13	
6	COMMAND	LPF AN15	ALL DIVS	171.5500	N	CSQ	164.1500	N	162.2	A	LPF ADMIN NET CALANDRIA T15	
7	TACTICAL	LPF T4	SUPPRESSION REPAIR	163.7125	N	CSQ	168.7125	N	CSQ	A	LPF TACTICAL	
8	TACTICAL	NIFC T2	ALL DIVS	168.2000	N	CSQ	168.2000	N	CSQ	A	NIFC T2	
9	A/G COMMAND	A/G CMD	ALL DIVS	167.5500	N	CSQ	167.5500	N	CSQ	A		
10	A/G TACTICAL	A/G TAC	ALL DIVS	163.1500	N	CSQ	163.1500	N	CSQ	A		
11												
12												
13												
14												
15	MEDEVAC A/G	CALCORD	ALL DIVS	156.0750	N	156.7	156.0750	N	156.7	A	MEDICAL EVAC EMERGENCIES ONLY	
16	AIRGUARD	GUARD 18	ALL DIVS	168.6250	N	CSQ	168.6250	N	110.9	A	EMERGENCIES ONLY	
5. Special Instructions:												
6. I-205 Prepared By: Communications Unit Leader				Name:	Robert Leonard			Signature:				

MEDICAL PLAN ICS 206	1. INCIDENT NAME	2. DATE PREPARED	3. TIME PREPARED	4. OPERATIONAL PERIOD				
	Dolan Fire	10/14/2020	1300	10/15/2020 - 10/16/2020 07:00 - 07:00				
5. INCIDENT MEDICAL AID STATIONS								
MEDICAL AID STATIONS	LOCATION						PARAMEDICS	
							YES	NO
Medical Unit	ICP							X
6. TRANSPORTATION								
A. AIR AMBULANCES								
NAME	LOCATION	PHONE	PARAMEDICS					
			YES	NO				
911 Provider Day-Night Mission	Variable - (40 min ETA)	Los Padres ECC 805-961-5727	X					
CHP H70 Hoist Day / Variable Night	Paso Robles, CA - (20 min ETA)	Paso Robles ECC 805-239-3553	X					
Mercy Air Night	FHL, CA - (10 min ETA)	FHL ECC 831-386-2526	X					
B. GROUND AMBULANCES & REM TEAMS								
NAME	LOCATION	PARAMEDICS						
		YES	NO					
AMR 1	Sand Dollar ICP	X						
AMR 2	DP 72	X						
REMS 1	DP 59	X						
REMS 2	Tusi Helibase			X				
Atascadero Ambulance	Anderson Peak Spike Camp	X						
7. HOSPITALS								
NAME	ADDRESS	TRAVEL TIME		PHONE	HELIPAD		BURN CTR	
		AIR	GRND		YES	NO	YES	NO
CHOMP LVL 3	23625 Holman Hwy Monterey, CA	N/A	30 Min	831-624-5311		X		X
Mee Memorial LVL 3	300 Canal St King City, CA	15 Min	60 Min	831-385-6000	X			X
Santa Clara Valley Med Ctr LVL 1	751 S. Bascom Ave.. San Jose, CA NN37 18.7713 X 121 55.9960	45 Min	90 Min	408-885-5000	X		X	
Natividad Medical Center LVL 2	1441 Constitution Blvd. Salinas Ca N36 41.8002 X W121 37.9853	25 Min	60 Min	831-755-6268	X			
Community Regional Med Ctr LVL 1	2823 Fresno St. Fresno, Ca N36 44.5702 X W119 47.0913	90 Min	180 Min	559-459-7401	X		X	
Big Sur Health Center Medical Clinic	46968 CA-1 Big Sur, CA 93920	N/A	60 Min	831-667-2580		X		X
8. MEDICAL EMERGENCY PROCEDURES								
<u>LINE-EMERGENCY MEDICAL DAY/NIGHT PLAN:</u>				<u>LINE "NON-EMERGENCY INCIDENT" PLAN:</u>				
- Crew Supervisor to contact Division Supervisor/Operations with:				- Crew Supervisor to contact Division Supervisor with:				
<ul style="list-style-type: none"> Patient Complaint, Condition and Location via Tactical or Command frequency. Priority 1/Red & 2/Yellow Patients trigger Incident within Incident (IWI). 				<ul style="list-style-type: none"> Patient Complaint, Condition and Location via Tactical or Command frequency. Priority 3/Green Patients do not trigger Incident within Incident (IWI). 				
- Division Supervisor/Operation contacts Los Padres Communications:				- Division Supervisor contacts Los Padres Communications:				
<ul style="list-style-type: none"> Division Supervisor or POC* will run "Medical -Emergency" on the Command frequency. Division Supervisor or POC* to use "Medical Incident Report" worksheet on back of this page or back of IRPG. Los Padres Communication contacts Medical Unit Leader on the Command frequency or camp frequency. 				<ul style="list-style-type: none"> Division Supervisor or POC* will run "Non-Emergency Incident" on the Los Padres frequency. Division Supervisor or POC* will use "Medical Incident Report" worksheet on the back of this page or back of IRPG. Los Padres Communications contacts Medical Unit Leader on the Command frequency or camp frequency. 				
POC* (Point of Contact) and/or Operations				<u>IN-CAMP 24 HOUR MEDICAL PLAN:</u>				
				- Contact Incident Communications with: Patient Complaint, Condition, and Location via Logs Net or Command frequency.				
ICS 206	9. PREPARED BY: (Medical Unit Leader) Jasmin Howard MEDL(t)			12		10. REVIEWED BY: (Safety Officer) James Martin SOFR (T)		

COVID-19 Best Practices / Mitigation

Minimize risk and limit exposure to COVID-19 by daily screening, minimizing large group settings, social distancing, wearing face coverings, hand washing, and practicing module of one concept.

At the beginning of the shift, supervisors should remind their personnel to self-screen for symptoms.

This document to be placed in the daily IAP

WILDLAND FIRE COVID-19 SCREENING TOOL

Today or in the past 24 hours, have you had any of the following symptoms¹?

Symptom
Cough more than expected?
Shortness of breath or difficulty breathing?
Fever? Chills?
Muscle pain, outside your normal for firefighting?
Sore throat?
New loss of taste or smell?
Fatigue, outside your normal for firefighting?
Headache, outside your normal for firefighting?
Congestion or runny nose, outside your normal for firefighting?
Nausea or vomiting
Diarrhea
<i>* Take temperature with no-touch thermometer, if available *</i>

¹Symptoms of Coronavirus

<https://www.cdc.gov/coronavirus/2019-ncov/symptoms-testing/symptoms.html>

Do your part to minimize your risk of exposure and limit the spread COVID-19.

Public Considerations

- ⇒ Wear a face covering when in public.
- ⇒ Wash your hands often.
- ⇒ Use hand sanitizer after pumping gas.
- ⇒ Use hand sanitizer prior to getting into your vehicle after visiting the grocery store or a restaurant.
- ⇒ Set the example while in the public eye.

*Keep in mind that fire camp is in a city with a populous and the potential for the COVID virus to be present is greater.

If you answered Yes to these symptoms, report it to your supervisor immediately, self-isolate away from other people until given direction and call **MEDICAL**.



COVID-19 OPERATIONAL FLOWCHART

PERSONNEL SHALL BE SCREENED FOR S&S OF COVID-19 AT CHECK-IN ← *ALL SUPERVISORS SHALL MONITOR THEIR PERSONNEL*

- ALL PERSONNEL SHALL:**
- PRACTICE PHYSICAL DISTANCING
 - WEAR A MASK WHEN LESS THAN 6' FROM OTHERS
 - SHALL SELF-MONITOR FOR S&S
 - WASH HANDS OFTEN / USE HAND SANITIZER
 - AVOID FACIAL CONTACT WITH YOUR HANDS
 - NOTIFY THE MEDICAL UNIT OF ANY FLU-LIKE S&S
 - DO NOT SHARE TOOLS / EQUIPMENT

- SIGNS & SYMPTOMS INCLUDE:**
- CHILLS OR FEVER > 100.4°
 - COUGH, AND/OR SHORT OF BREATH
 - LOSS OF TASTE OR SMELL, SORE THROAT
 - CONGESTION, RUNNY NOSE
 - FATIGUE, HEADACHE, BODY ACHES
 - NAUSEA OR VOMITING
- (Do not report to your assignment if you are sick)*

- PERSONNEL WHO DEVELOP FLU-LIKE SYMPTOMS SHALL:**
- NOTIFY THEIR IMMEDIATE SUPERVISOR
 - REPORT TO THE MEDICAL UNIT FOR EVALUATION

- MEDICAL UNIT WILL:**
- EVALUATE PERSONNEL / MAKE RECOMMENDATIONS
 - TRACK PERSONNEL FOR THE INCIDENT
 - CONTACT-TRACING
 - MAKE NECESSARY *TEAM & FOREST* NOTIFICATIONS

- PERSONNEL EXPERIENCING FLU-LIKE SYMPTOMS SHALL BE TESTED:**
- SEEK MEDICAL CARE FOR FURTHER TESTING (TESTING SITES PROVIDED BY THE MEDL)
 - AFTER TESTING IS COMPLETE, PERSONNEL MAY HAVE TO QUARANTINE WHILE AWAITING RESULTS

- IF COVID-POSITIVE:**
- PERSONNEL SHALL ISOLATE AT APPROVED LOCATION UNTIL DEMOB'D (LOCATION PROVIDED BY THE MEDL)

- IF NEGATIVE:**
- FOLLOW AGENCY SPECIFIC GUIDELINES
 - OR, PER CDC, NO FURTHER ACTION REQUIRED

- SUPERVISOR SHOULD:**
- MAKE NOTIFICATIONS TO HOME UNIT
 - BEGIN AGENCY WORK-COMP PROCESS
 - COMPLETE DEMOB PROCESS

PERSONNEL: CONTINUE TO SELF-MONITOR
(Do not report to your assignment if you are sick)
 IF PERSONNEL IS TOO SICK, NOTIFY SUPERVISOR

IMT WILL PROVIDE DIRECTION AND SUPPORT UNTIL RECEIVED BY THE HOME UNIT

FDNY IMT - MEDICAL UNIT WILL TRACK AND MONITOR ALL COVID RELATED EXPOSURES



IN-CAMP ISOLATION FLOWCHART:

- IN-CAMP GUIDELINES AS FOLLOWS:**
- PERSONNEL SHALL ISOLATE AT APPROVED LOCATION ONCE EVALUATED BY MEDICAL STAFF
 - MEDICAL UNIT WILL MONITOR PERSONNEL UNTIL DEMOBILIZED FROM THE INCIDENT

SHOULD PERSONNEL'S HEALTH STATUS DETERIORATE, CONTACT THE MEDICAL UNIT ASAP

- MEDICAL UNIT SHALL:**
- CONTACT COMMUNICATIONS - ARRANGE FOR TRANSPORTATION TO HOSPITAL IF NEEDED
 - CALL THE IMMEDIATE SUPERVISOR
 - MAKE NECESSARY TEAM & FOREST NOTIFICATIONS

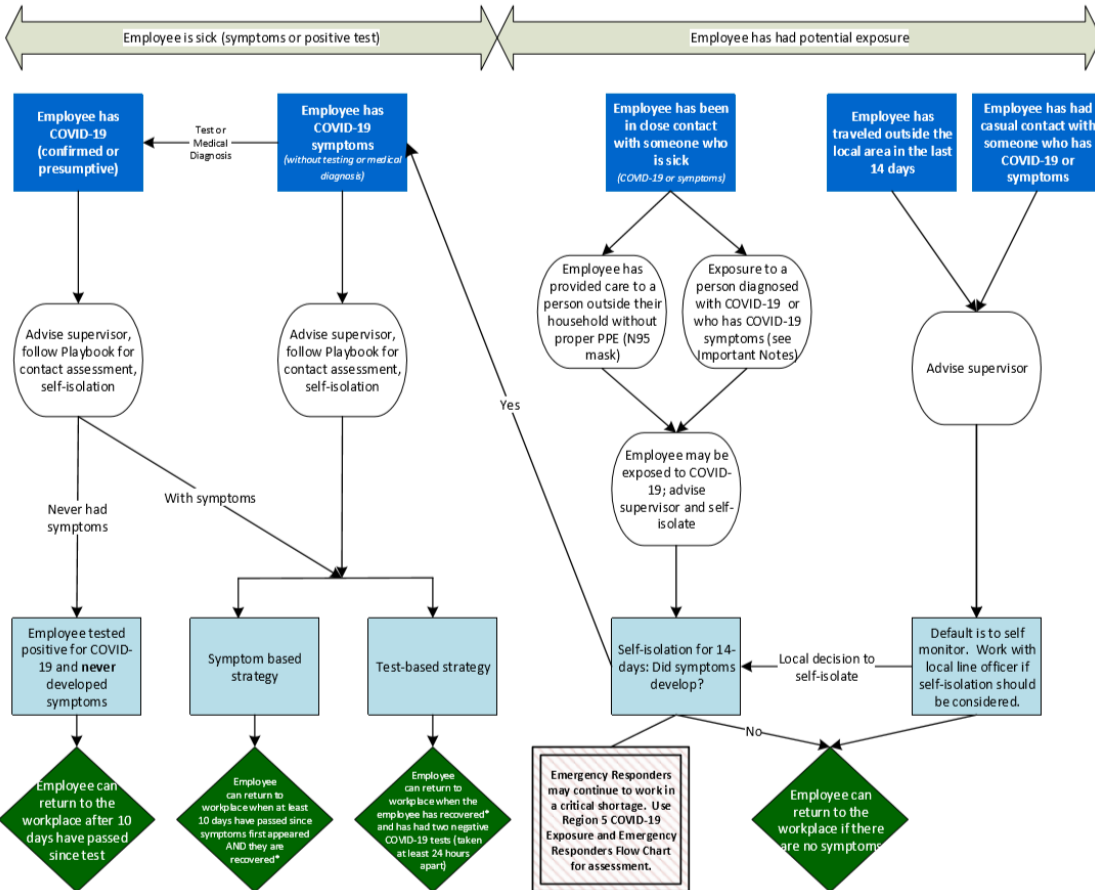
FEDERAL EMPLOYEES SHALL REFER TO REGION 5 — COVID-19 ACTION PROCESS FOR AGENCY SPECIFIC GUIDANCE



Region 5 Pacific Southwest Region COVID-19 Response Action Process

August 20, 2020

COVID-19 Response and Employee Notification



Important Notes:

- * Recovered is defined as 10 days since symptoms first appeared AND 24 hours with no fever without the use of fever-reducing medicines AND other symptoms of COVID-19 are improving.
- Symptoms of COVID-19 include cough, shortness of breath, trouble breathing, fever, chills, repeated shaking with chills, muscle or body aches, headache, sore throat, new loss of taste or smell, congestion or runny nose, nausea or vomiting, or diarrhea.
- Contact Assessment should be conducted to help determine potential exposure of additional employees; conduct assessment for the 2-day period before illness onset or test date of sick employees, whichever came first.
- Close contact is defined as less than 6 feet, for at least 15 minutes with or without face coverings/masks. Casual contact is defined as less than 6 feet for less than 15 minutes or more than 6 feet for more than 15 minutes.
- Any employee in "close contact with someone who is sick" may return to the workplace if the sick person is tested for COVID-19 and the test is negative.
- Contact with exposed individuals is classified as secondary contact and does not typically require self-isolation unless the exposed individual tests positive.
- You do not need to self-isolate unless you meet one of the criteria identified.
- Always follow the advice of a medical provider, if given, including any need for isolation or clearance for return-to-duty.

This document is subject to change based on CDC guidance.

DOLAN FIRE SAFETY MESSAGE

INCIDENT: **Dolan Fire**

DATE: October 15, 2020

TIME: 0700-0700

Major Hazards and Risks:

- **DRIVING** – Drive defensively, keep within posted speed limits and avoid nighttime driving.
- **STEEP TERRAIN AND ROLLING MATERIALS** – Loose boulders and timber from above.
- **ENSURE LCES** - The potential exists for isolated burning of interior fuels.
- **DEHYDRATION** – Consume at least 1 quart of water per hour during periods of hard work.
- **COMPLACENCY AND FATIGUE**- Stay focused, stay rested, stay ready.
- **SNAGS AND FIRE WEAKENED TREES** – Look up, down and around. Size up all hazard trees.
- **COVID**– Use COVID precautions, including social distancing and face coverings when practical.
- **POISON OAK** – Avoid and wash affected skin as soon as possible to limit rash and spread.
- **ASH PITS** – Warning signs include white ash, hovering insects, translucent smoke and sunken depressions.
- **UNEXPLODED ORDNANCE** – Stay on road system while on Fort Hunter Liggett. If found, STAY AWAY and clearly mark the area.

POISON OAK

Workers can prevent contact with poisonous plants by taking these steps:

- Wear long sleeves, long pants, boots, and gloves.
 - Wash exposed clothing separately in hot water with detergent.
- Barrier skin creams, such as a lotion containing bentoquatam, may offer some protection before contact.
 - Barrier creams should be washed off and reapplied twice a day.
- After use, clean tools with rubbing alcohol (isopropanol or isopropyl alcohol) or soap and lots of water. Urushiol can remain active on the surface of objects for up to 5 years.
 - Wear disposable gloves during this process.
- Do not burn plants that may be poison ivy, poison oak, or poison sumac.
 - Inhaling smoke from burning plants can cause severe allergic respiratory problems.

Today's weather is forecast to have potentially dangerous high temperatures with very low humidity. Take the time to rest when appropriate, utilize shaded areas and wear sunscreen. Maintain proper hydration. In high heat or hard work, personnel should consume at least 1 quart of water per working hour. The operational tempo of this incident is decreasing. Take advantage of this opportunity to control your work environment as opposed allowing the environment dictate the terms of the fight!





Legend

- Muster Site
- Dumpster
- Lot
- Temp Structure
- Restroom
- Evacuation Route

Evacuation Plan

DOLAN
CA-LPF-002428

1 inch equals 10 miles
Scale: 1:623,156

Coordinate System: WGS 1984 UTM Zone 10N



VIRTUAL TIME



- Scan the QR code above with your smartphone
- Upload a picture of your shift tickets
- Please add the following in the **SUBJECT LINE**:
 - Resource Number, Last Name/Crew Name
(example: O-12.34 Smith/C123 Crew Name)
- Send email to: **2020.Dolan.Finance@firenet.gov**

- ✓ Please indicate breaks on all of your shift tickets.
- ✓ Please include your resource # on all documents submitted, including receipts.
- ✓ If possible, please be consistent with the method in which you submit your documents.
- ✓ A justification in remarks is required for federal employees claiming hazard pay on CTRs. For example: "Working in Division ___ with an uncontrolled fire line."
- ✓ Please indicate R&R days if taken.
- ✓ Please turn in both pink and blue shift tickets.



10/15/2020

TENTATIVE RELEASE

DOLAN US-CA-LPF-002428



CREWS

C-117 1300 (HC2I) VENTANA

EQUIPMENT

E-564 0745 (ENG6) PVT-ENG6-KL FARMS

OVERHEAD

O-1178 0700 (IMET) NELAIMISCHKIES, SVEN B

O-975 0730 (IMET) VAN SPEYBROECK, KURT

O-1137 0745 (COST) COLBY, DARIN

O-1143 0800 (GISS) PINA, MONICA RENAE

10/16/2020

TENTATIVE RELEASE

DOLAN US-CA-LPF-002428

CREWS

C-113 0915 (HC2) SUNDOWNERS

OVERHEAD

O-1030 0800 (SOFR) ROEBER, SCOTLAND A

O-1078 0815 (MEDL) ALLREAD, JESSE ARTHUR

O-1088 0830 (THSP) ROTBERG, VADIM LEON

O-1123 0845 (PSCT) WHITMIRE, MARTIN

O-1087 0900 (PSCT) WESTERFIELD, KERRY

O-1170 0930 (HEQB) SHIFFRAR, MICHAEL

10/16/2020

TENTATIVE RELEASE

DOLAN US-CA-LPF-002428

CREWS

C-113 0915 (HC2) SUNDOWNERS

OVERHEAD

**O-1030 0800 (SOFR) ROEBER, SCOTLAND A
O-1078 0815 (MEDL) ALLREAD, JESSE ARTHUR
O-1088 0830 (THSP) ROTBERG, VADIM LEON
O-1123 0845 (PSCT) WHITMIRE, MARTIN
O-1087 0900 (PSCT) WESTERFIELD, KERRY
O-1170 0930 (HEQB) SHIFFRAR, MICHAEL**

10/17/2020

TENTATIVE RELEASE

DOLAN US-CA-LPF-002428

CREWS

**C-111 0000 (CC) CCC'S POMONA 7
C-114 0000 (HC2) SANTA LUCIA**

EQUIPMENT

E-377 0700 (PU) TRANSPORTATION - PICKUP -

Medical Incident Report

FOR A NON-EMERGENCY INCIDENT, WORK THROUGH CHAIN OF COMMAND TO REPORT AND TRANSPORT INJURED PERSONNEL AS NECESSARY.

FOR A MEDICAL EMERGENCY: IDENTIFY ON SCENE INCIDENT COMMANDER BY NAME AND POSITION AND ANNOUNCE "MEDICAL EMERGENCY" TO INITIATE RESPONSE FROM IMT COMMUNICATIONS/DISPATCH.

Use the following items to communicate situation to communications / dispatch.

1. CONTACT COMMUNICATIONS / DISPATCH (Verify correct frequency prior to starting report)

Ex: "Communications, Div. Alpha. Stand-by for Emergency Traffic."

2. INCIDENT STATUS: Provide incident summary (including number of patients) and command structure.

Ex: "Communications, I have a Red priority patient, unconscious, struck by a falling tree. Requesting air ambulance to Forest Road 1 at (Lat./Long.) This will be the Trout Meadow Medical, IC is TFLD Jones. EMT Smith is providing medical care."

Severity of Emergency / Transport Priority	<input type="checkbox"/> RED / PRIORITY 1 Life or limb threatening injury or illness. Evacuation need is IMMEDIATE <i>Ex: Unconscious, difficulty breathing, bleeding severely, 2° – 3° burns more than 4 palm sizes, heat stroke, disoriented.</i> <input type="checkbox"/> YELLOW / PRIORITY 2 Serious Injury or illness. Evacuation may be DELAYED if necessary. <i>Ex: Significant trauma, unable to walk, 2° – 3° burns not more than 1-3 palm sizes.</i> <input type="checkbox"/> GREEN / PRIORITY 3 Minor Injury or illness. Non-Emergency transport <i>Ex: Sprains, strains, minor heat-related illness.</i>	
Nature of Injury or Illness & Mechanism of Injury		<i>Brief Summary of Injury or Illness (Ex: Unconscious, Struck by Falling Tree)</i>
Transport Request		<i>Air Ambulance / Short Haul/Hoist Ground Ambulance / Other</i>
Patient Location		<i>Descriptive Location & Lat. / Long. (WGS84)</i>
Incident Name		<i>Geographic Name + "Medical" (Ex: Trout Meadow Medical)</i>
On-Scene Incident Commander		<i>Name of on-scene IC of Incident within an Incident (Ex: TFLD Jones)</i>
Patient Care		<i>Name of Care Provider (Ex: EMT Smith)</i>

3. INITIAL PATIENT ASSESSMENT: Complete this section for each patient as applicable (start with the most severe patient)

Patient Assessment: See IRPG page 106

Treatment:

4. TRANSPORT PLAN:

Evacuation Location (if different): (Descriptive Location (drop point, intersection, etc.) or Lat. / Long.) Patient's ETA to Evacuation Location:

Helispot / Extraction Site Size and Hazards:

5. ADDITIONAL RESOURCES / EQUIPMENT NEEDS:

Example: Paramedic/EMT, Crews, Immobilization Devices, AED, Oxygen, Trauma Bag, IV/Fluid(s), Splints, Rope rescue, Wheeled litter, HAZMAT, Extrication

6. COMMUNICATIONS: Identify State Air/Ground EMS Frequencies and Hospital Contacts as applicable

Function	Channel Name/Number	Receive (RX)	Tone/NAC *	Transmit (TX)	Tone/NAC *
COMMAND					
AIR-TO-GRND					
TACTICAL					

7. CONTINGENCY: Considerations: If primary options fail, what actions can be implemented in conjunction with primary evacuation method? Be thinking ahead.

8. ADDITIONAL INFORMATION: Updates/Changes, etc.

REMEMBER: Confirm ETA's of resources ordered. Act according to your level of training. Be Alert. Keep Calm. Think Clearly. Act Decisively.