

Thursday

# INCIDENT ACTION PLAN DOLAN INCIDENT

CA-LPF-002428

P5NF6M (0507)



## OPERATIONAL PERIOD

9/24/2020 0700

to

9/25/2020 0700

This page intentionally left blank



# INCIDENT OBJECTIVES (ICS 202)

<b>1. Incident Name:</b> <p style="text-align: center;">Dolan</p>	<b>2. Operational Period:</b>	Date From: 9/24/2020 Time From: 0700	Date To: 9/25/2020 Time To: 0700
--	-------------------------------	---	-------------------------------------

**3. Objective(s):**

STRATEGIC FRAMEWORK

Implement a full suppression strategy on the Dolan Fire. Values at risk include human safety, private property, National Scenic Byway (Highway 1), Fort Hunter Liggett improvements, and wilderness values. Apply tactics that offer the highest probability of success. Identify, develop and prepare contingency measures in a proactive fashion. Develop and maintain an accurate and timely information sharing process for high value vineyard operations.

MANAGEMENT OBJECTIVES

- Provide for firefighter and public safety through hazard recognition and application of the risk management process.
- Provide opportunities for resources assigned to provide their expertise and suggestions for plan development and implementation.
- Reduce the threat to private property, residences and infrastructure through the application of effective suppression tactics.
- Minimize risk and limit exposure to COVID-19 by daily screening, minimizing large group settings, social distancing, wearing face coverings, hand washing and practicing module of one concept.
- Reduce the impacts to the Ventana Wilderness values by ensuring minimum impact suppression tactics (MIST) are applied. Utilize historic fire control lines, trails, streams, ridges and natural barriers when possible for control lines.
- Coordinate suppression activities with assigned incident resource advisors to minimize impacts on natural and cultural resources.
- Distribute accurate and timely fire information to cooperators, the public, and stakeholders pertaining to fire behavior and suppression activities to enhance public awareness.
- Manage resources at a level to meet protection objectives while maintaining fiscal accountability.

CONTROL OBJECTIVES

To prevent the fire spread to private property, surrounding communities, and values at risk, Keep the fire:

- Protect the values at risk along the Highway 1 corridor.
- Keep the fire south of the Marble Peak Trail (Willow Creek) from Anderson Peak to Arroyo Seco and south of the 19S09 Road (Arroyo Seco River).
- Keep the fire west of the 19S01 Road (Vasqueros River) and the 19S08 (Reliz River) Road.
- Keep the fire North of the line from Highway 1 Prewitt Ridge to the Mckern Road, Nacimiento–Ferguson Road to Del Venturi to Milpitas Heights Road.

**5. Site Safety Plan Required?** Yes  No

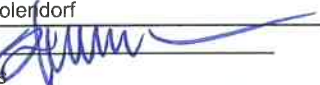
**Approved Site Safety Plan(s) Located at:**

**6. Incident Action Plan**

- |   |  |  |   |
|---|--|--|---|
| <input checked="" type="checkbox"/> ICS 203       | <input checked="" type="checkbox"/> Safety Message | <input type="checkbox"/> Finance Message     | <input checked="" type="checkbox"/> DMOB List |
| <input checked="" type="checkbox"/> WX            | <input checked="" type="checkbox"/> ICS 215a       | <input type="checkbox"/> Information         | <input type="checkbox"/> Phone List           |
| <input checked="" type="checkbox"/> Fire Behavior | <input checked="" type="checkbox"/> ICS 205        | <input type="checkbox"/> READ                | <input type="checkbox"/> Travel Map           |
| <input checked="" type="checkbox"/> ICS 204       | <input checked="" type="checkbox"/> ICS 206        | <input type="checkbox"/> HR                  | <input checked="" type="checkbox"/> Base Map  |
| <input checked="" type="checkbox"/> ICS 220       | <input checked="" type="checkbox"/> COVID          | <input checked="" type="checkbox"/> Training | <input checked="" type="checkbox"/> ICS 214   |

<b>7. Prepared By:</b> Steve Anderson	Position/Title: PSC	Signature:
<b>8. Approved by Incident Commander:</b>	Jimmy Harris	Signature:

## ORGANIZATION ASSIGNMENT LIST (ICS 203)

<b>1. Incident Name:</b> Dolan		<b>2. Operational Period: Date From:</b> 9/24/2020 Time From: 0700		<b>Date To:</b> 9/25/2020 Time To: 0700	
<b>3. Incident Commander(s) and Command Staff:</b>			<b>7. Operation Section:</b>		
IC/UC's	Jimmy Harris	Operations	Stephen Fillmore		
Deputy	Tom Clemo	Day Ops	Shaun Craig		
Safety Officer	Rick Bertram, Tom Zeulner, David Varon (T)	Planning Ops	Mark Smith		
Information Officer	Tom Stokesberry, Lisa Walker (T), Deborah Carlisi (T)				
Liaison Officer	Bob Neumann, Ray Cablayan, Jeff Jones (V)	<b>Branch</b>	<b>I</b>	<b>Mike Milkovitch . Mark Gerwe (T)</b>	
<b>4. Agency/Organization Representatives:</b>		Division/Group	F/K	Unstaffed	
Agency/Organization	Name	Division/Group	A/Z	Jeff Goyings	
Los Padres AREP	Chris Dowling, Tony Martinez	Division/Group	Y/X	Corey Stowe, Kenn Perreault (T)	
Big Sur Fire Dep.	Matt Harris	Division/Group			
Fort Hunter Liggett	Jeff Manetti	Division/Group			
Monterey Sheriff	Maoirriano	<b>Branch</b>	<b>IV</b>	<b>Unstaffed</b>	
CHP	M. Olta, J. Yerace	Division/Group	W/S/R	Erick D'Amico	
CA OES	John Salvatte	Division/Group	O/P	Dan O'Connor	
CA State Parks	M. A. Khalar	Division/Group	M	Chris Linane	
PG&E	G. Money	Division/Group			
		Division/Group			
		<b>Branch</b>	<b>Night</b>	<b>Terry Walter</b>	
		Division/Group	Night	Jason Westholter	
		Division/Group			
		Division/Group			
		Division/Group			
		Division/Group			
		<b>Branch</b>			
		Division/Group			
<b>5. Planning Section:</b>		Division/Group			
Chief	Steve Anderson	Division/Group			
Deputy	Michael LaPlant	Division/Group			
Resource Unit	Greg White	Division/Group			
Situation Unit	Christina Barba, Mike Held, Mike Callahan (T)	<b>Branch</b>			
Documentation Unit		Division/Group			
Demobilization Unit	Tim Sandstrom (T), Josh Clark (T)	Division/Group			
GISS	Dawn Hutchinson, MariIn Porter, Greg Elwood	Division/Group			
FBAN	Nick Elmquist	Division/Group			
IMET	Royce Fontenot	Division/Group			
Training Tech Spec	Jesse Roach (V)	<b>Air Operations Branch</b>		<b>Director:</b>	<b>John Crotty</b>
ITSS	Marty Cohn	Air Support Group Supervisor		Eric Verdries, Seth Larson (T)	
Lead READ	Kevin Cooper, Monique Sanchez (T)	Air Tactical Group Supervisor		Alex Ihle	
<b>6. Logistics Section</b>				Tusi Helibase Manager	
Chief	Mike Beeman, Tom Crakes				
Supply Unit	John Harkleroad, Trish Dutrey	<b>8. Finance/Administration Section:</b>			
Facilities Unit	Mike Farmer, Tim Murdoch	Chief	AnnMarie Carlson		
Ground Support Unit	John Badaracco	Procurement Unit			
Communications Unit	David Paschke, Rick Smith	Comp/Claims Unit			
Medical Unit	Robert Ethridge	Cost Unit	Lee Piper		
Food Unit	Snow Talifero (T), Tim Murdoch (T)	Personnel Time	Pamel Killingsworth		
COVID	Jim Emerson	Equipment Time	Amanda Folerndorf		
<b>Prepared By: Name:</b>	Steve Anderson	<b>Position/Title:</b>	PSC	<b>Signature:</b>	
<b>ICS 203</b>		<b>Date/Time:</b>	9/23/2020 2300 hours		



# Fire Weather Forecast

## THURSDAY, SEPTEMBER 24 2020



**FORECAST NO:** 33  
**PREDICTION FOR:** Thursday  
**SHIFT DATE:** September 24, 2020  
**ISSUED:** 2000 Wednesday, Sept 23, 2020

**NAME OF FIRE:**  
**UNIT:**  
**Incident Meteorologist:**

**Dolan**  
**USFS/LPNF**  
**Royce Fontenot /s/**  
**(240) 499-6642**

**DISCUSSION:** Slightly cooler conditions are expected over the fire area today as high pressure begins to move out of the region. Temperatures today will be about two degrees cooler with afternoon humidity values up about 3% from Wednesday. Humidity values will begin lower this morning and will reach their daily low values somewhat earlier than in previous days. Winds will remain generally light and terrain dependent. A strong and deep inversion will setup once again tonight with good humidity recoveries at the lower elevations with fair to poor recoveries above about 1500 feet MSL. Friday will see cooler temperatures with slightly lower humidity values from Thursday. A significant increase in temperatures is expected this weekend.

---

### THURSDAY:

- WEATHER: Mostly clear.
- WIND (20 FT):
 

Coast:	Onshore 3-6 mph.
Inland:	Terrain driven 2-4 mph becoming E-NE 5-8 mph by 1200. Gust to 15 mph along ridges. Div W: SE-SW 5-8 mph gust to 12 mph after 1400.
Arroyo Seco:	Terrain driven 2-4 mph then up-valley 5-7 mph by 1200. Gusts to 15 mph After 1400.
- MAX TEMPERATURES: Highs 62-66 near the coast. 86-92 inland and Arroyo Seco.
- MIN RH: 60-70% near the coast. 19-24% inland.
- INVERSION LIFT/MIXING HEIGHT: 0900 hrs/5500 feet MSL
- TRANSPORT WINDS: NNW 8 mph
- MARINE LAYER 100 FT Coastal Branch

---

### THURSDAY NIGHT:

- WEATHER: Patchy fog and low clouds Div Y/X. Mostly clear elsewhere.
- WIND (20 FT): Terrain driven 2-6 mph.
- MIN TEMPERATURES: 55-60 near the coast, 48-53 inland and Arroyo Seco, 66-70 above 1500 feet MSL.
- MIN RH: 70-80% near the coast and Arroyo Seco. 55-65% lower inland areas, 25-40% higher terrain.
- INVERSION: 3500 feet MSL / Strong
- TRANSPORT WINDS: N 6 mph
- MARINE LAYER 500 FT coastal branch

---


### FRIDAY:

- WEATHER: Morning fog and clouds Div Y/X then mostly sunny. Mostly sunny inland areas and Arroyo Seco,
  - WIND (20 FT):
 

Coast:	Onshore 3-6 mph.
Inland:	Terrain driven 2-4 mph becoming E-NE 5-8 mph by 1200. Gust to 17 mph along high ridges. Div W: E-SE 5-8 mph gust to 12 mph after 1400.
Arroyo Seco:	Terrain driven 2-4 mph then up-valley 5-7 mph by 1200. Gusts to 15 mph After 1400.
  - MAX TEMPERATURES: Highs 62-67 near the coast. 85-90 inland and Arroyo Seco.
  - MIN RH: 60-70% near the coast. 17-23% inland.
  - INVERSION LIFT/MIXING HEIGHT: 0900 hrs/4500 feet MSL
  - TRANSPORT WINDS: NW 8 mph
  - MARINE LAYER 100 FT Coastal Branch
-



## FIRE BEHAVIOR FORECAST

FORECAST NUMBER: 34	TYPE OF FIRE: Wildfire
FIRE NAME: Dolan	OPERATIONAL PERIOD: Sept. 24, 2020 24hr
DATE ISSUED: Sept. 23, 2020	TIME ISSUED: 1900 hours
UNIT: CA-LPF	SIGNED: 
	Typed/printed: Nic Elmquist, FBAN

### Weather Summary

**\*\*Please see attached Fire Weather Forecast\*\***

High Temps: 86<sup>o</sup>-92<sup>o</sup> (inland), 62<sup>o</sup>-66<sup>o</sup> (coast)                      Min RH's: 19-24% (inland), 60-70%(coast)  
Winds: Terrain driven 2-4 mph becoming E-NE 5-8 mph by 1200. Gust to 14 mph along ridges.

### FIRE BEHAVIOR

#### GENERAL:

The overall fire danger has been moderated over the last week. This combined with the strong work by the ground and air resources has the fire holding in its current perimeter. Fire danger indices are now on an upward trend that will continue into the weekend. These indices will peak on Sunday and Monday with triple digit temperatures forecasted for the inland areas. Take advantage of the favorable conditions over the next several operational periods before the heat arrives.

Probability of ignition during peak burn period (1200-1600) - 70-80%; Burning Index of 110

Local Thresholds: Combinations of any of these factors can lead to greatly increased fire behavior: **20' windspeed over 7 mph**, relative humidity <17%, temperature over 98, **10-Hour Fuel Moisture less than 6.**

#### SPECIFIC:

Branch I: Minimal fire behavior is anticipated. There will likely be smokes popping up as the weather becomes warmer and dryer in the coming days. Continue the tactical patrols, paying particular attention to any unburned islands of vegetation near the perimeter and near structures.

Branch IV: The main potential will be in this Branch. The identified areas of concern are near the "Bridge Dip" in the Arroyo Seco River and any heat holding in drainages near Junipero Serra Peak area due to the inaccessibility of the terrain. There is also heat showing on the IR on the Southern flank of the fire interior of the McKern Ridge line with reburn potential. There are minimal options to the south of this line, so it is important to secure this portion of the fire as much as possible before it gets heat tested this weekend.

**\*\*Please send in weather observations from this area when possible.**

#### AIR OPERATIONS:

Outside the immediate coastline, there should be clear air for aviation operations if/when they are needed.

#### SAFETY

The rule of gravity comes into play on all fires on the Monterey R.D. Be aware of where you are in relation to large trees. The chutes leading down to roadways can act like "bowling alleys". The fire has weakened many of the trees and the vegetation around large boulders that can cause serious damage to people and equipment below. Look up, Look Down, Look Around.









# ASSIGNMENT LIST (ICS 204 WF)

CONTROLLED UNCLASSIFIED  
INFORMATION//BASIC

<b>1. Incident Name:</b> <p style="text-align: center;"><b>Dolan</b></p>	<b>2. Operational Period:</b> Date From: 09/24/20      Date To: 09/25/20 Time From: 0700              Time To: 0700	<b>3. Branch</b> <b>Division</b> <p style="text-align: center;"><b>IV</b>                      <b>W/S/R</b></p>
---	---	--

<b>4. Operations Personnel:</b>		Page 1 of 2
Operations Section Chief: <b>Stephen Fillmore</b>	Day Ops: <b>Shaun Craig</b>	
Branch Director: <b>Unstaffed</b>	Branch Safety: <b>Timothy Benedict, Thomas Dunn (T), Tom Plymale</b>	
Division/Group Supervisor: <b>Erick D'Amico</b>	Air Attack:	

<b>5. Resources Assigned:</b>		***Resources in BOLD are identified as IA resources***					
Resource Identifier	ALS	LWD	Leader	Personnel	Request #	Hours	Reporting Location
STC XSD 6430C	X	10/1	POST, SCOTT	22	E-330	0700-1900	Mission Spike
ENG3 CA-FHL E8833		10/5	GARDNER, CLAYTON	5	E-455	0700-1900	Mission Spike
ENG3 CA-PRK 344		10/6	GONZALEZ, BRANDON	4	E-456	0700-1900	Mission Spike
ENG3 AZ-CEA ENG 66		10/5	KOONCE, MIKE	4	E-410	0700-1900	Mission Spike
ENG3 LPF-E315		10/3	VALENTIN, NICK	5	E-22	0700-1900	Mission Spike
ENG3 CAMINOS FIRE AZ-TDC		9/28	ROADS, JOHN	3	E-409	0700-1900	Mission Spike
ENG3 INDIANA DUNES E-7852		10/5	RAMIREZ, BRANDON	5	E-143	0700-1900	Mission Spike
DOZ2 - ABLE SERVS D6R		10/4	JAMES, GORDON	2	E-369	0700-1900	Mission Spike
SKGN ZEB'S TREE 42083		9/28	STAFF, DOUG	2	E-335	0700-1900	Mission Spike
WTS1 - NORTHSTATE #348		10/2	BAKER, KIMBER	1	E-231	0700-1900	Mission Spike
FALM EYE OF THE EAGLE M3		10/2	NIX, EDWARD	2	O-526	0700-1900	Mission Spike
TFLD GOTTBHEUT		9/30	GOTTBHEUT, CHAD	1	O-891	0700-1900	Mission Spike
TFLD SCHWANTES (T)		9/30	SCHWANTES, JOSEPH	1	O-893	0700-1900	Mission Spike
HEQB EROSKY (T)		9/26	EROSKY, SHANE	1	O-842	0700-1900	Mission Spike
FEMT ANTES		9/25	ANTES, DOMINIC	1	O-602	0700-1900	Mission Spike
FEMT HASSLINGER		9/30	HASSLINGER, JOHN	1	O-901	0700-1900	Mission Spike

**6. Work Assignments:**  
 TASK: Hold and Improve primary line; Establish trigger points for firing operations and secure firing north and east of Del Venturi. Fire and secure control line from McKern Ridge to Nacimiento Road.  
 PURPOSE: Keep fire out of AV Ranch, Fort Hunter Liggett and prevent further spread south.  
 END STATE: Community and Fort Hunter Liggett protected.  
 RISK ASSESSMENT: Watch for ash pits when moping up and be alert for vehicle traffic.

**7. Special Instructions:**  
 -All medical resource MUST check in with Dolan Communications once in place, See medical plan for REMS availability.  
 -Ambulances will be located on paved roads for patient transport only.  
 -READs will check in and out with Division.  
 -Assume all divisions have Sudden Oak Death Pathogen and clean and disinfect everything.  
 -For Mop up and Patrol – Do not go off the road (UXO).  
 -Utilize Collector App of Avenza and mark all accountable property (pumps, hose, tanks,...), attach a picture of serial number with the LAT and LONG.

<b>8. Communications</b>							
Name	Ch	Function	Rx Freq	Rx Tone	Tx Freq	Tx Tone	Notes
CMD 2	2	COMMAND	173.0250	110.9	165.3875	110.9	C41 JUNIPERO SERRA PEAK
TAC 4	10	TACTICAL	166.7750	110.9	166.7750	110.9	NIFC T6
A/G TAC	14	A/G TACTICAL	163.1500		163.1500		
CALCORD	15	MEDEVAC A/G	156.0750	156.7	156.0750	156.7	MEDICAL EVAC EMERGENC
GUARD 18	16	AIRGUARD	168.6250		168.6250	110.9	EMERGENCIES ONLY

<b>9. Prepared by: Name:</b> Greg White	RESL	Signature:
<b>ICS 204</b>	Date/Time: 9/23/2020 2200	Personnel Count: 60









# ASSIGNMENT LIST (ICS 204 WF)

CONTROLLED UNCLASSIFIED  
INFORMATION#BASIC

<b>1. Incident Name:</b> <b>Dolan</b>	<b>2. Operational Period:</b> Date From: 09/24/20    Date To: 09/25/20 Time From: 0700    Time To: 0700	<b>3. Branch</b> <b>Night</b>	<b>Division</b> <b>Night</b>
--	---	----------------------------------	---------------------------------

Page 1 of 1

<b>4. Operations Personnel:</b>	
Operations Section Chief: <b>Stephen Fillmore</b>	Day Ops: <b>Shaun Craig</b>
Branch Director: <b>Terry Walter</b>	Branch Safety:
Division/Group Supervisor: <b>Jason Westholter</b>	Air Attack:

<b>5. Resources Assigned:</b>		<b>***Resources in BOLD are identified as IA resources***</b>					
Resource Identifier	ALS	LWD	Leader	Personnel	Request #	Hours	Reporting Location
ENG5 WILDLANDS FIRE E7		9/25	ASHLEY ORLANDO	4	E-227	1900-0700	PACIFIC VALLEY
ENG6 ROCKY POINT E324		9/26	COLBRY, SETH	4	E-85	1900-0700	PACIFIC VALLEY

**6. Work Assignments:**  
TASK: Monitor and patrol fire activity. Take action to strengthen control lines as appropriate.  
PURPOSE: To provide community protection.  
END STATE: Fire stays within its identified perimeter.  
RISK ASSESSMENT: Stay alert for drivers sightseeing the fire area and in restricted areas. Watch for rollout onto roads and flare ups above the roadway

**7. Special Instructions:**  
-All medical resource MUST check in with Dolan Communications once in place, See medical plan for REMS availability.  
-Ambulances will be located on paved roads for patient transport only.  
-READs will check in and out with Division.  
-Assume all divisions have Sudden Oak Death Pathogen and clean and disinfect everything.  
-For Mop up and Patrol – Do not go off the road (UXO).  
-Utilize Collector App of Avenza and mark all accountable property (pumps, hose, tanks,...), attach a picture of serial number with the LAT and LONG.

<b>8. Communications</b>							
Name	Ch	Function	Rx Freq	Rx Tone	Tx Freq	Tx Tone	Notes
CMD 3	3	COMMAND	172.0750	110.9	162.2000	110.9	C47 CONE PEAK
TAC 2	8	TACTICAL	168.6000	110.9	168.6000	110.9	NIFC T3
A/G TAC	14	A/G TACTICAL	163.1500		163.1500		
CALCORD	15	MEDEVAC A/G	156.0750	156.7	156.0750	156.7	MEDICAL EVAC EMERGENC
GUARD 18	16	AIRGUARD	168.6250		168.6250	110.9	EMERGENCIES ONLY

**9. Prepared by: Name:** Greg White    RESL  
Signature: 

ICS 204    Date/Time: 9/23/2020 2200    Personnel Count: 8

**AIR OPERATIONS SUMMARY**  
**DAY/NIGHT**  
**ICS 220**

Prepared By: John Crotty  
 AOB

Prepared Date: 9/23/20

Prepared Time: 1800

1. INCIDENT NAME: Dolan Fire	2. OPS PERIOD DATE: 9/24/20	START TIME: 0700	END TIME: 2100	SUNRISE: 0655	SUNSET: 1857
------------------------------	-----------------------------	------------------	----------------	---------------	--------------

3. REMARKS (Safety Notes, Hazards, Air Operations Special Equipment, etc.): Track all dipsite locations/number of dips/gallons taken. Track all drop locations/number of drops/gallons dropped. All GPS data to be collected in DEGREES, MINUTES, DECIMAL MINUTES format. AVOID Aerial Application of Retardant/Foam/Agent within 300' of Waterways, Bodies of Water, etc If Retardant/Foam/Agent is dropped within these areas immediately notify the AOB and provide the following information: Lat/Long, estimated number of gallons and a map detailing the area. CAUTION Military Flight Routes CAUTION POWERLINES and SMOKE.	4. Helibase Information: Tusi Helibase: 35 59.687 121 14.202 Seco Helitorch Base: 36 13.820 121 27.930 Gruver MRB: 36 14.637 121 25.933	5. TFR's: Polygon Shape  Altitude: 10,000' MSL NOTAMS: 07430 Frequency: 127.0250 http://tfr.faa.gov
--	--	--

6. PERSONNEL	NAME	PHONE #	7. FREQUENCIES	RX	7. TONE	TX	8. TONE	AM/FM	8. MEDIVAC SHIP INFORMATION
AOBD	John Crotty	805-440-6186	AIR TACTICS	164.6000		164.6000		FM	Day: Name: CHP H70 Paso Robles Hoist
ASGS	Eric Verdries	805-455-5569	TFR Victor	127.0250		127.0250		AM	
ASGS (T)	Seth Larson	805-886-5850	Rotor Victor	121.0250		121.0250		AM	
Tusi Helibase	J.D. Domingues	805-350-3716	Tusi Advisory	126.200		126.200		AM	Mercy Air 20 (FHL)
Secco Helitorch Base	John Kaisersatt	805-878-4755	A/G COMMAND	167.5500		167.5500		FM	
ATGS	Alex Ihle	805-364-1002	A/G TACTICAL	163.1500		163.1500		FM	Cal Star 5 Salinas
			Deck	168.3500		168.3500		FM	
			Fire Service Net	171.5000		164.8250	146.2	AM	Santa Barbara H308 NVG/ALS Hoist
			CALCORD	156.0750	(T6)156.7	156.0750	(T6) 156.7	FM	
			Air Guard	168.6250		168.6250	(T1) 110.9	FM	



# DOLAN FIRE SAFETY MESSAGE

*"Safety isn't expensive, it's priceless." – Author Unknown*

INCIDENT: **Dolan Fire**

DATE: September 24, 2020

TIME: 0700-0700

## Major Hazards and Risks:

- **DRIVING** - Keep your speeds down. Be alert for increased public in fire area.
- **STEEP TERRAIN AND ROLLING MATERIALS** - Watch for boulders that can roll out.
- **POTENTIAL FOR EXTREME FIRE BEHAVIOR** - All fuels are available and can burn aggressively. Ensure **LCES**.
- **DEHYDRATION** - Ensure you and your personnel are staying hydrated. Fill up early.
- **FATIGUE** – Watch your people today, look for signs of fatigue and mitigate them.
- **WORKING UNDER HELICOPTERS** – Less bucket work today, stay engaged if in the area.
- **SNAGS AND FIRE WEAKENED TREES** – Survey your work area, look up and live.
- **COVID IS A RISK** – Use COVID precautions and mitigations (masks/distancing).
- **POSION OAK** – Avoid, Avoid, Avoid...Launder clothing and shower frequently.
- **ASH PITS** – Watch out for ash pits while in mop up phase.
- **UN-EXPLODED ORDINENCE** – Stay on road system while on Fort Hunter Liggett.

**Narrative:** Charles Morton (39) died Sept. 17, 2020 while fighting the El Dorado Fire. He was a squad boss on the Big Bear Hotshots. He started his career in firefighting in 2002. "He always had my back" said his friend of 15 years. Charles will be missed. Charles leaves behind his wife, daughter, his parents and extended family.

## Life First

**Life First - everyone goes home.** We cannot accept any loss of life; while we are well aware of the challenges and the hazards our people face every day in the fire environment, together we can work to eliminate unnecessary exposure and increase the odds that everyone goes home in 2020.

- It means that knowing the dangers we face, we still expect that our personnel will not engage unless they can do so with the greatest margin of safety.
- We expect our emergency responders to refuse assignments where hazards cannot be satisfactorily addressed.
- We ask people to take risks in fire every day, sending them to work in environments that are known to be hazardous, but we should only do so where the values we have determined threatened justify the risks and the probability of success is high.
- The way to achieve our goal of zero fatalities is to train, to practice risk management, to think, to communicate, and to foster a learning environment to seek smarter ways to meet our objectives in every situation, and to learn and improve every day.

## New COVID Advisor at ICP

His name is Jon Kazmierski. He wants to remind us that the expectations from the Chief of the Forest Service – Vicki Christiansen, Regional Forester – Randy Moore and the Los Padres National Forest Supervisor – Kevin Elliott have not changed as we move into this long season of COVID.

- CA Team 15 places a high emphasis on COVID best practices and starts with the Team IC and the whole team.
- Don't be complacent with your COVID prevention. Now is not the time.
- Respect your co-workers and their families' health by always going the extra mile to keep your co-workers and yourself COVID free.
- The extra effort in time spent on COVID prevention will allow operational firefighters and support personnel to maintain focus on incident objectives. We need you and your team to stay healthy, our fire season is a long way from over...



## INCIDENT SAFETY ANALYSIS 215a

Dolan Fire - Thursday, September 24, 2020

8. Location	9. Hazard	6. Control or Abatement Action (Engineering, Administrative, PPE, Avoidance, Education, etc)
All	Driving & Traffic	<ul style="list-style-type: none"> <li>~ Practice "Defensive Driving" techniques traveling on all roads and city streets.</li> <li>~ Use spotters when backing.</li> <li>~ Honk horn to alert personnel when backing.</li> <li>~ Keep clutter off dash and inside cab.</li> <li>~ Follow Driving LCES (Lights, Chock blocks, Emergency brake, Seat belts).</li> <li>~ Always use headlights.</li> <li>~ Yield to pedestrians and bicycles.</li> <li>~ Observe posted speed limits.</li> <li>~ Use the 3 second rule for following distance when driving.</li> <li>~ Use chock blocks, turn wheels into hill.</li> <li>~ Avoid distractions (eating, cell phones, radio).</li> <li>~ Ensure that windshields are kept clean of dust and bugs.</li> </ul>
ALL	Potential Extreme Fire Behavior	<ul style="list-style-type: none"> <li>~ Share weather observations with all personnel assigned to division.</li> <li>~ Establish "Trigger Points" to withdraw.</li> <li>~ Use "Risk Management" process prior to engaging in suppression actions, refer to page 1, IRPG.</li> </ul>
All	Mop-up & Rehab	<ul style="list-style-type: none"> <li>~ Do not work above or below personnel during rehab/mop-up operations.</li> <li>~ Alert crew personnel of rolling debris by yelling to affected individuals.</li> <li>~ Position debris that could roll vertically on slope.</li> <li>~ Wear eye protection.</li> </ul>
All	Helicopter Operations	<ul style="list-style-type: none"> <li>~ Stay clear of all bucket drops when suppression actions are in place and allow 1 minute prior to re-entry.</li> <li>~ Monitor A-G communications.</li> <li>~ Follow aviation safety guidelines in IRPG P. 58 and IHOG.</li> </ul>
ALL	Chain Saw Operations	<ul style="list-style-type: none"> <li>~ Follow "Hazard Tree Safety" guidelines, IRPG page 22</li> <li>~ Look up, Look down, Look around for hazard tree indicators.</li> <li>~ Only fell and buck trees within your expertise, and training.</li> <li>~ Follow "Procedural Felling Operations" on IRPG page 85.</li> <li>~ Do not fall trees during high wind events.</li> <li>~ Ensure proper use of all required PPE.</li> </ul>
BR 4	Line Construction	<ul style="list-style-type: none"> <li>~ Watch for rolling materials</li> <li>~ Ensure escape routes are realistic</li> <li>~ Ensure radio communications are good</li> <li>~ Watch footing and crew spacing</li> <li>~ Post lookouts</li> <li>~ Review IRPG P.9 prior to engagement</li> <li>~ Review IRPG P.7</li> </ul>
ALL	Unburned Area/Reburn Potential	<ul style="list-style-type: none"> <li>~ Monitor weather.</li> <li>~ Base actions upon observed and predicted fire behavior.</li> <li>~ LCES Checklist (IRPG pg. 6)</li> <li>~ Look Up, Down and Around IRPG page 3-4.</li> </ul>
ALL	Unidentified Hazardous Waste and Unexploded Ordinance	<ul style="list-style-type: none"> <li>~ Avoid identified Hazmat and UXO areas</li> <li>~ Use "Unexploded Ordinance Safety" guidelines IRPG Page 27</li> <li>~ Deny entry to others. Do not transmit on radio if in proximity</li> <li>~ Map location of all UXO and Hazmat.</li> </ul>
ALL	Poisonous Plants	<ul style="list-style-type: none"> <li>~ Identify and Avoid hazard areas.</li> <li>~ Launder clothing.</li> <li>~ Shower frequently.</li> </ul>
All / CAMPS	COVID-19	<ul style="list-style-type: none"> <li>~ Maintain at least 6' distancing from others at all times</li> <li>~ Work as a unit of 1 for duration of incident</li> <li>~ Wear masks around others if 6' distancing isn't maintained</li> <li>~ Wear masks in camp at all times \ if no ones around use common sense</li> <li>~ Wash hands often and use hand sanitizer through out the day</li> <li>~ Report any illness to supervisor immediately and remove yourself from others</li> <li>~ Notify Medical Unit of any illness</li> <li>~ Do not share tools or equipment</li> <li>~ Do not touch any part of your face</li> </ul>
ALL	Night Operations	<ul style="list-style-type: none"> <li>~ Maintain high visibility in work area and wear vest while in roadway.</li> <li>~ Use glow sticks to mark hazards.</li> <li>~ Ensure personnel have a personal light (headlamp).</li> <li>~ Watch for signs of fatigue.</li> <li>~ Take breaks away from areas of known hazard.</li> </ul>
ALL	Spike Camp	<ul style="list-style-type: none"> <li>~ Keep a clean camp.</li> <li>~ Ensure communications are in place.</li> <li>~ Review and observe "Line Spike" considerations IRPG page 95.</li> </ul>
ALL	Mines	<ul style="list-style-type: none"> <li>~ Identify and avoid mining areas.</li> <li>~ Notify others of hazard.</li> </ul>



# ICS 205 - INCIDENT RADIO COMMUNICATIONS PLAN

CONTROLLED UNCLASSIFIED  
INFORMATION//BASIC

<b>1. Incident Name:</b> Dolan Incident Channels	<b>2. Date/Time Prepared</b> Date: 09/23/2020 Time: 1930	<b>3. Operational Period:</b> Date To: 09/25/20 Time To: 0700
--	--	---

4. Communications									
Ch#	Function	Name	Assigned To	Rx Freq	Rx Tone	Tx Freq	Tx Tone	Notes	
1	COMMAND	CMD 1	ALL DIVS	170.9750	110.9	168.7000	110.9	C1 ANDERSON PEAK	
2	COMMAND	CMD 2	ALL DIVS	173.0250	110.9	165.3875	110.9	C41 JUNIPERO SERRA PEAK	
3	COMMAND	CMD 3	ALL DIVS	172.0750	110.9	162.2000	110.9	C47 CONE PEAK	
4									
5	COMMAND	CMD 5	ALL DIVS	173.8250	110.9	165.3625	110.9	C34 CHEWS RIDGE	
6	COMMAND	CMD 6	ALL DIVS	170.0125	110.9	165.2500	110.9	C9 PINYON PEAK	
7									
8	TACTICAL	TAC 2	DIV A, F, K, Z NIGHT OPS	168.6000	110.9	168.6000	110.9	NIFC T3	
9	TACTICAL	TAC 3	DIV M, O, P	166.7250	110.9	166.7250	110.9	NIFC T5	
10	TACTICAL	TAC 4	DIV R, S, W	166.7750	110.9	166.7750	110.9	NIFC T6	
11									
12	TACTICAL	VFIRE 21	DIV Y/X	154.2800	156.7	154.2800	156.7		
13	A/G COMMAND	A/G CMD	ALL DIVS	167.5500		167.5500			
14	A/G TACTICAL	A/G TAC	ALL DIVS	163.1500		163.1500			
15	MEDEVAC A/G	CALCORD	ALL DIVS	156.0750	156.7	156.0750	156.7	MEDICAL EVAC EMERGENCIES ONLY	
16	AIRGUARD	GUARD 18	ALL DIVS	168.6250		168.6250	110.9	EMERGENCIES ONLY	
17									
18									
19									
20	AIRGUARD	GUARD 18	ALL DIVS	168.6250		168.6250	110.9	EMERGENCIES ONLY	


**5. Special Instructions**

6. Prepared by (Communications Unit Leader): Name: DAVID PASCHKE COM1 JEFF DAVIS COM1-T	Signature:
ICS 205 - CONTROLLED UNCLASSIFIED INFORMATION//BASIC	Date/Time: 09/23/20 1930

NIMS IAP

This page intentionally left blank



<b>MEDICAL PLAN</b> <b>ICS 206</b>		1. INCIDENT NAME <b>Dolan Fire</b>	2. DATE PREPARED 9/23/2020	3. TIME PREPARED 1900	4. OPERATIONAL PERIOD Day/Night 9/24/20 0700-0700				
<b>5. INCIDENT MEDICAL AID STATIONS</b>									
MEDICAL AID STATIONS		LOCATION			PARAMEDICS				
<b>Frontline Medical</b>		<b>ICP</b>			YES	NO			
					X				
<b>6. TRANSPORTATION</b>									
<b>A. AIR AMBULANCES</b>									
NAME		LOCATION		PHONE		PARAMEDICS			
						YES	NO		
<b>911 Provider</b> Day-Night Mission		Variable - (40 min ETA)		Los Padres ECC 805-961-5727		X			
<b>CHP H70</b> Hoist Day / Variable Night		Paso Robles, CA - (20 min ETA)		Paso Robles ECC 805-239-3553		X			
<b>Mercy Air</b> Night		FHL, CA - (10 min ETA)		FHL ECC 831-386-2526		X			
<b>B. GROUND AMBULANCES &amp; REM TEAMS</b>									
NAME		LOCATION			PARAMEDICS				
					YES	NO			
AMR 1		DP 54			X				
AMR 2		DP 72			X				
Atascadero Ambulance		DP 66			X				
REM 2		South Side of Fire							
<b>7. HOSPITALS</b>									
NAME		ADDRESS		TRAVEL TIME		HELIPAD		BURN CTR	
				AIR	GRND	PHONE	YES	NO	YES
CHOMP LVL 3		23625 Holman Hwy Monterey, CA		N/A	30 Min	831-624-5311		X	X
Mee Memorial LVL 3		300 Canal St King City, CA		15 Min	60 Min	530-225-6000	X		X
Santa Clara Valley Med Ctr LVL 1		751 S. Bascom Ave.. San Jose, CA NN37 18.7713 X 121 55.9960		45 Min	90 Min	916-734-2011	X		X
Natividad Medical Center LVL 2		1441 Constitution Blvd. Salinas Ca N36 41.8002 X W121 37.9853		25 Min	60 Min	831-755-6268	X		
Community Regional Med Ctr LVL 1		2823 Fresno St. Fresno, Ca N36 44.5702 X W119 47.0913		90 Min	180 Min	559-459-7401	X		X
<b>8. MEDICAL EMERGENCY PROCEDURES</b>									
<b>LINE-EMERGENCY MEDICAL DAY/NIGHT PLAN:</b>				<b>IN-CAMP 24 HOUR MEDICAL PLAN:</b>					
Crew Supervisor to contact Division Supervisor/Operations with patient complaint, condition and location.				Report to Medical Unit Aid Station or contact Medical Unit Leader with patient complaint, condition and location, via LOGs Net or Cell Phone as needed.					
Division Supervisor/Operations contacts Dolan Communications:				Medical Unit Leader will ensure contacts made to:					
<ul style="list-style-type: none"> <li>Division Supervisor or *POC to use "Medical Incident Report" worksheet on next page</li> <li>Division Supervisor or *POC will run medical emergency on the command channel</li> <li>Communications contacts Medical Unit Leader on Command channel or (cell phone, list number)</li> <li>Medical Unit Leader position is responsible for:               <ol style="list-style-type: none"> <li>Ensure Communications dispatches appropriate ground/air transport resources.</li> <li>Notify receiving hospital of injury status.</li> <li>Develop primary and contingency transport plan</li> <li>Notify Safety, Logistics, Operations</li> </ol> </li> </ul>				<ul style="list-style-type: none"> <li>Safety, Logistics, and Operations</li> <li>Medical Unit Leader will:               <ol style="list-style-type: none"> <li>Contact incident Communications to dispatch ground / air transport resources.</li> <li>Notify receiving hospital of injury status.</li> <li>Develop primary and contingency transport plan.</li> </ol> </li> </ul>					
				*POC (Person of Contact)					
<b>ICS 206</b>		9. PREPARED BY: (Medical Unit Leader) Robert Ethridge MEDL			10. REVIEWED BY: (Safety Officer) Rick Bertram SOF2				

### Medical Incident Report

**FOR A NON-EMERGENCY INCIDENT, WORK THROUGH CHAIN OF COMMAND TO REPORT AND TRANSPORT INJURED PERSONNEL AS NECESSARY.**

**FOR A MEDICAL EMERGENCY: IDENTIFY ON SCENE INCIDENT COMMANDER BY NAME AND POSITION AND ANNOUNCE "MEDICAL EMERGENCY" TO INITIATE RESPONSE FROM IMT COMMUNICATIONS/DISPATCH.**

Use the following items to communicate situation to communications / dispatch.

**1. CONTACT COMMUNICATIONS / DISPATCH (Verify correct frequency prior to starting report)**

*Ex: "Communications, Div. Alpha. Stand-by for Emergency Traffic."*

**2. INCIDENT STATUS: Provide incident summary (including number of patients) and command structure.**

*Ex: "Communications, I have a Red priority patient, unconscious, struck by a falling tree. Requesting air ambulance to Forest Road 1 at (Lat./Long.) This will be the Trout Meadow Medical, IC is TFLD Jones. EMT Smith is providing medical care."*

Severity of Emergency / Transport Priority	<input type="checkbox"/> <b>RED / PRIORITY 1</b> Life or limb threatening injury or illness. Evacuation need is IMMEDIATE <i>Ex: Unconscious, difficulty breathing, bleeding severely, 2° – 3° burns more than 4 palm sizes, heat stroke, disoriented.</i> <input type="checkbox"/> <b>YELLOW / PRIORITY 2</b> Serious Injury or illness. Evacuation may be DELAYED if necessary. <i>Ex: Significant trauma, unable to walk, 2° – 3° burns not more than 1-3 palm sizes.</i> <input type="checkbox"/> <b>GREEN / PRIORITY 3</b> Minor Injury or illness. Non-Emergency transport <i>Ex: Sprains, strains, minor heat-related illness.</i>	
Nature of Injury or Illness & Mechanism of Injury		Brief Summary of Injury or Illness <i>(Ex: Unconscious, Struck by Falling Tree)</i>
Transport Request		Air Ambulance / Short Haul/Hoist Ground Ambulance / Other
Patient Location		Descriptive Location & Lat. / Long. (WGS84)
Incident Name		Geographic Name + "Medical" <i>(Ex: Trout Meadow Medical)</i>
On-Scene Incident Commander		Name of on-scene IC of Incident within an Incident <i>(Ex: TFLD Jones)</i>
Patient Care		Name of Care Provider <i>(Ex: EMT Smith)</i>

**3. INITIAL PATIENT ASSESSMENT: Complete this section for each patient as applicable (start with the most severe patient)**

Patient Assessment: See IRPG page 106

Treatment:

**4. TRANSPORT PLAN:**

Evacuation Location (if different): (Descriptive Location (drop point, intersection, etc.) or Lat. / Long.) Patient's ETA to Evacuation Location:

Helispot / Extraction Site Size and Hazards:

**5. ADDITIONAL RESOURCES / EQUIPMENT NEEDS:**

*Example: Paramedic/EMT, Crews, Immobilization Devices, AED, Oxygen, Trauma Bag, IV/Fluid(s), Splints, Rope rescue, Wheeled litter, HAZMAT, Extrication*

**6. COMMUNICATIONS: Identify State Air/Ground EMS Frequencies and Hospital Contacts as applicable**

Function	Channel Name/Number	Receive (RX)	Tone/NAC *	Transmit (TX)	Tone/NAC *
COMMAND					
AIR-TO-GRND					
TACTICAL					

**7. CONTINGENCY: Considerations: If primary options fail, what actions can be implemented in conjunction with primary evacuation method? Be thinking ahead.**

**8. ADDITIONAL INFORMATION: Updates/Changes, etc.**

**REMEMBER: Confirm ETA's of resources ordered. Act according to your level of training. Be Alert. Keep Calm. Think Clearly. Act Decisively.**





# COVID-19 OPERATIONAL FLOWCHART

PERSONNEL SHALL BE SCREENED FOR S&S OF COVID-19 AT CHECK-IN.

ALL SUPERVISORS SHALL MONITOR THEIR PERSONNEL

**ALL PERSONNEL SHALL:**

- PRACTICE PHYSICAL DISTANCING
- WEAR A MASK WHEN LESS THAN 6' FROM OTHERS
- SHALL SELF-MONITOR FOR S&S
- WASH HANDS OFTEN / USE HAND SANITIZER
- AVOID FACIAL CONTACT WITH YOUR HANDS
- NOTIFY THE MEDICAL UNIT OF ANY FLU-LIKE S&S
- DO NOT SHARE TOOLS / EQUIPMENT

**SIGNS & SYMPTOMS INCLUDE:**

- CHILLS OR FEVER > 100.4'
- COUGH, AND/OR SHORT OF BREATH
- LOSS OF TASTE OR SMELL, SORE THROAT
- CONGESTION, RUNNY NOSE
- FATIGUE, HEADACHE, BODY ACHES
- NAUSEA OR VOMITING

*(Do not report to your assignment if you are sick)*

**PERSONNEL WHO DEVELOP FLU-LIKE SYMPTOMS SHALL:**

- NOTIFY THEIR IMMEDIATE SUPERVISOR
- REPORT TO THE MEDICAL UNIT FOR EVALUATION

**MEDICAL UNIT WILL:**

- EVALUATE PERSONNEL / MAKE RECOMMENDATIONS
- TRACK PERSONNEL FOR THE INCIDENT - CONTACT-TRACING
- MAKE NECESSARY TEAM & FOREST NOTIFICATIONS

**PERSONNEL EXPERIENCING FLU-LIKE SYMPTOMS SHALL BE TESTED:**

- SEEK MEDICAL CARE FOR FURTHER TESTING ( TESTING SITES PROVIDED BY THE MEDL )
- AFTER TESTING IS COMPLETE, PERSONNEL MAY HAVE TO QUARANTINE WHILE AWAITING RESULTS

**IF COVID-POSITIVE:**

- PERSONNEL SHALL ISOLATE AT APPROVED LOCATION UNTIL DEMOB'D (LOCATION PROVIDED BY THE MEDL)

**IF NEGATIVE:**

- FOLLOW AGENCY SPECIFIC GUIDELINES
- OR, PER CDC, NO FURTHER ACTION REQUIRED

**SUPERVISOR SHOULD:**

- MAKE NOTIFICATIONS TO HOME UNIT
- BEGIN AGENCY WORK-COMP PROCESS
- COMPLETE DEMOB PROCESS

**PERSONNEL: CONTINUE TO SELF-MONITOR**  
*(Do not report to your assignment if you are sick)*  
**IF PERSONNEL IS TOO SICK, NOTIFY SUPERVISOR**

IMT WILL PROVIDE DIRECTION AND SUPPORT UNTIL RECEIVED BY THE HOME UNIT

TEAM 15—MEDICAL UNIT WILL TRACK AND MONITOR ALL COVID RELATED EXPOSURES





# IN-CAMP ISOLATION FLOWCHART:

- IN-CAMP GUIDELINES AS FOLLOWS:**
- PERSONNEL SHALL ISOLATE AT APPROVED LOCATION ONCE EVALUATED BY MEDICAL STAFF
  - MEDICAL UNIT WILL MONITOR PERSONNEL UNTIL DEMOBILIZED FROM THE INCIDENT

**SHOULD PERSONNEL'S HEALTH STATUS DETERIORATE, CONTACT THE MEDICAL UNIT ASAP**

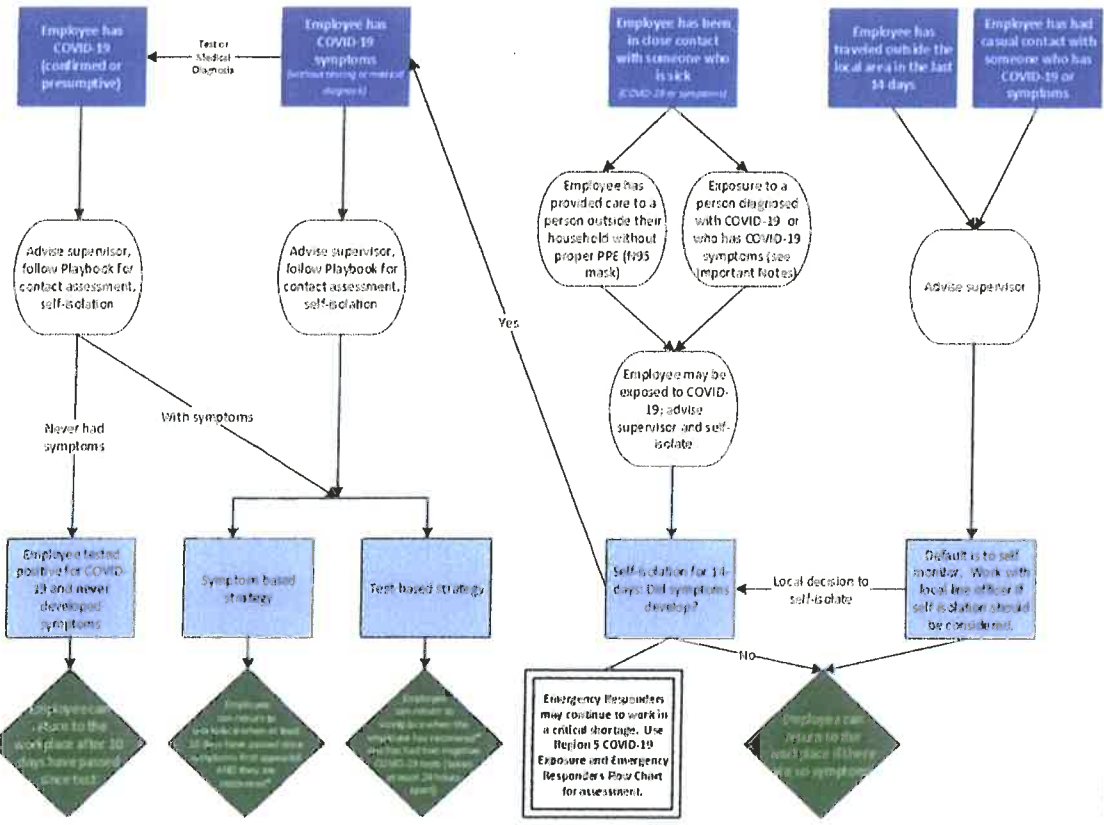
- MEDICAL UNIT SHALL:**
- CONTACT COMMUNICATIONS - ARRANGE FOR TRANSPORTATION TO HOSPITAL IF NEEDED
  - CALL THE IMMEDIATE SUPERVISOR
  - MAKE NECESSARY TEAM & FOREST NOTIFICATIONS

**FEDERAL EMPLOYEES SHALL REFER TO REGION 5 — COVID-19 ACTION PROCESS FOR AGENCY SPECIFIC GUIDANCE**



## Region 5 Pacific Southwest Region COVID-19 Response Action Process August 20, 2020

### COVID-19 Response and Employee Notification



**Important Notes:**

- \* Recovered is defined as 10 days since symptoms first appeared AND 24 hours with no fever without the use of fever-reducing medicines AND other symptoms of COVID-19 are improving.
- Symptoms of COVID-19 include: cough, shortness of breath, trouble breathing, fever, chills, repeated shaking with chills, muscle or body aches, headache, sore throat, new loss of taste or smell, congestion or runny nose, nausea or vomiting, or diarrhea.
- Contact Assessment should be conducted to help determine potential exposure to additional employees; conduct assessment for the 2-day period before illness onset or test date of sick employees, whichever came first.
- Close contact is defined as less than 6 feet, for at least 15 minutes with or without face coverings/masks. Casual contact is defined as less than 6 feet for less than 15 minutes or more than 6 feet for more than 15 minutes.
- Any employee in "close contact with someone who is sick" may return to the workplace if the sick person is tested for COVID-19 and the test is negative.
- Contact with exposed individuals is classified as secondary contact and does not typically require self-isolation unless the exposed individual tests positive.
- You do not need to self-isolate unless you meet one of the criteria identified.
- Always follow the advice of a medical provider, if given, including any need for isolation or clearance for return-to-duty.

*This document is subject to change based on CDC guidance.*

FOR QUESTIONS, PLEASE CONTACT: **MEDL - TYE JOHNSON (760) 617-7406** OR **MEDL - ROBERT ETHRIDGE (626) 632-0838**

# COVID-19 Best Practices / Mitigation

Minimize risk and limit exposure to COVID-19 by daily screening, minimizing large group settings, social distancing, wearing face coverings, hand washing, and practicing module of one concept.

At the beginning of the shift, supervisors should remind their personnel to self-screen for symptoms.

## WILDLAND FIRE COVID-19 SCREENING TOOL

Today or in the past 24 hours, have you had any of the following symptoms<sup>1</sup>?

Symptom
Cough more than expected?
Shortness of breath or difficulty breathing?
Fever? Chills?
Muscle pain, outside your normal for firefighting?
Sore throat?
New loss of taste or smell?
Fatigue, outside your normal for firefighting?
Headache, outside your normal for firefighting?
Congestion or runny nose, outside your normal for firefighting?
Nausea or vomiting
Diarrhea
<i>* Take temperature with no-touch thermometer, if available *</i>

<sup>1</sup>Symptoms of Coronavirus

<https://www.cdc.gov/coronavirus/2019-ncov/symptoms-testing/symptoms.html>

*Do your part to minimize your risk of exposure and limit the spread COVID-19.*

## Public Considerations

- ⇒ Wear a face covering when in public.
- ⇒ Wash your hands often.
- ⇒ Use hand sanitizer after pumping gas.
- ⇒ Use hand sanitizer prior to getting into your vehicle after visiting the grocery store or a restaurant.
- ⇒ Set the example while in the public eye.

*\*Keep in mind that fire camp is in a city with a populous and the potential for the COVID virus to be present is greater.*

If you answered Yes to these symptoms, report it to your supervisor immediately, self-isolate away from other people until given direction and call **MEDICAL**.

Document all contacts with anyone other than your “module of one” for potential contact tracing (on your 214 Unit Activity Log)

*Examples of when & what to document:*

1. An STL is sitting in a vehicle with a Division Supervisor for 10-15 minutes or greater without wearing a face covering...Document this!
2. Someone from another work group enters your work space without a face covering for 10-15 minutes or greater...Document this!
3. Personnel from Division Alpha ties in with Division Bravo without a face covering and no proper social distancing...Document this!

*Arrive healthy, go home healthy!*

**TENTATIVE RELEASE**  
**Dolan Fire CA-LPF-002428**

**9/24/20**

**EQUIPMENT:**

E-157	0700	(ENG6)	SLO-PATROL 1
E-436	0700	(DOZ2)	LPF DOZER 4
E-474	0800	(ENG3)	LPF ENGINE 18
E-519	0800	(ENG6)	LPF ENGINE 17

**OVERHEAD:**

O-957.62	0000	(GISS)	HUTCHINSON, DAWN
O-501	0700	(EMPF)	GRAFFTON, CHRISTOPHER
O-913	0700	(DRIV)	PATTERSON, RALPH
O-905	0800	(DIVS)	GOLDSTEIN, DAVID
O-498	0800	(PIO2)	ROMNEY, KENT

**9/25/20**

**EQUIPMENT:**

E-358	0600	(MEC)	MISC - SERVICE TRUCK W/ PICKUP - BLM - UT33 (BLM
E-473	0600	(PU)	PVT-GRND SPT-PU EVANS
E-138	0700	(PU)	

**OVERHEAD:**

O-910	0600	(ORDM)	DUGGAN, BRYAN
O-886	0700	(ICT1)	PRUMMER, JODY
O-742	0800	(REAF)	DORVAL, DAVID JUSTIN
O-740	0800	(READ)	SANCHEZ, MONIQUE
O-712	0800	(ITSS)	TAUS JR, VICTOR J
O-833	1000	(BCMG)	FRANKLIN, TERESA L

IF YOU NEED A FLIGHT, CALL DEMOB AT 925-499-5889 OR RESOURCES AT 925-499-5909 WITH YOUR INFORMATION **AT LEAST 72 HOURS IN ADVANCE** SO WE CAN WORK ON YOUR FLIGHT ARRANGMENTS.

**If you develop Covid Symptoms and Test Positive for Covid 19 with 14 days after DEMOB, please notify:**

Karina Gutierrez, USFS  
928-227-7732  
Karina.gutierrez@usda.gov

# ***TRAINING SPECIALIST MESSAGE***

A Training Specialist assigned to the incident. Federal, State, and Local government agency trainees working on position task book, we are here to help. There is no need to register with the Incident Training Specialist. If you need training forms, evaluations or position task book help.

You can contact the TNSP Jesse Roach at (530) 966-3459 for training related questions.

Jesse Roach  
Training Specialist

Dolan LPF-002428 Facilities Map  
Salinas Valley Fairgrounds



101 Fwy NB  
101 Fwy SB

One Way

One Way

One Way

One Way

San Lorenzo Street

Canal Street

Division Street

Mobile Sleepers

Meeting Room

Briefing

Sleeping Area

MEDL

IC

ORDM

INFO

COMMS

IT

SECURITY

LOGS

OPS

Laundry

Kitchen

Shower

Fuel

Ground Support

Finance  
Resources  
Documentation  
PLANS/GIS

CHECK-IN /  
DEMOB

Parking

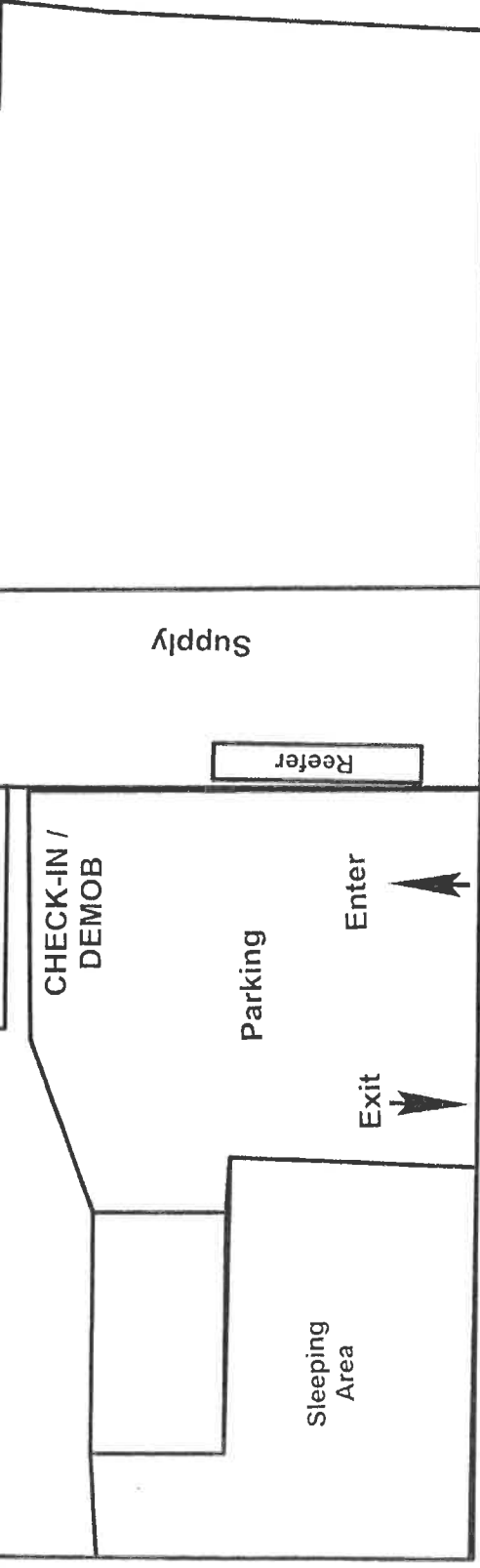
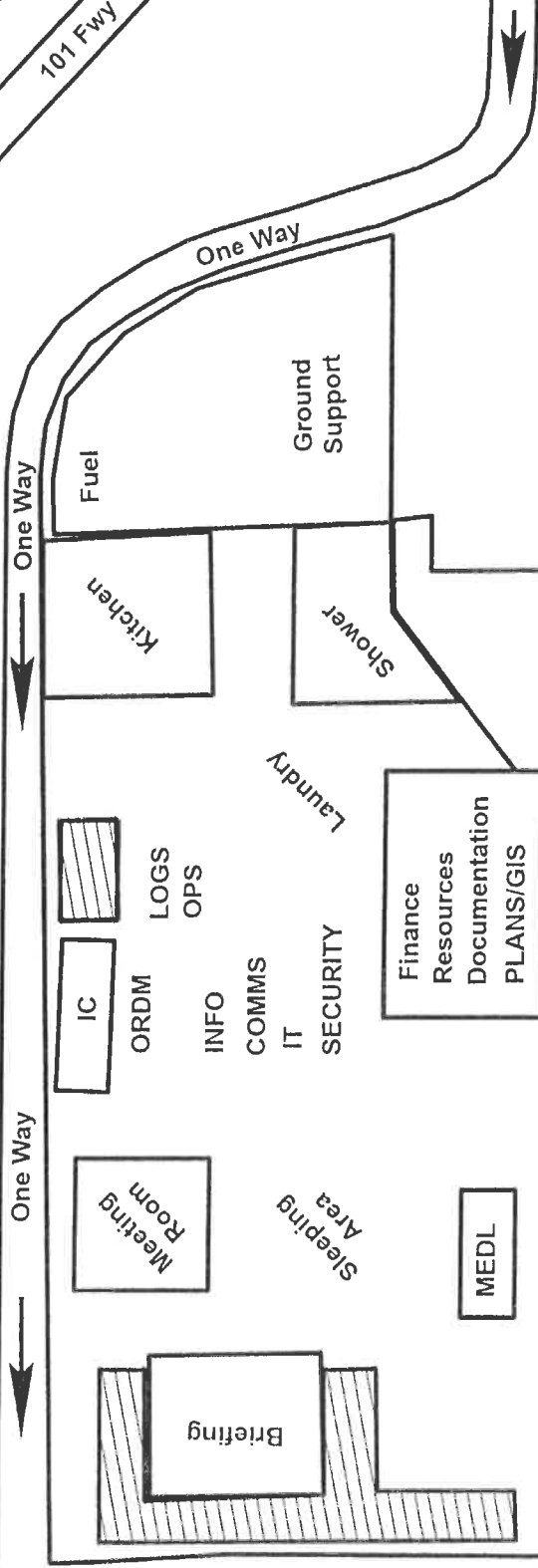
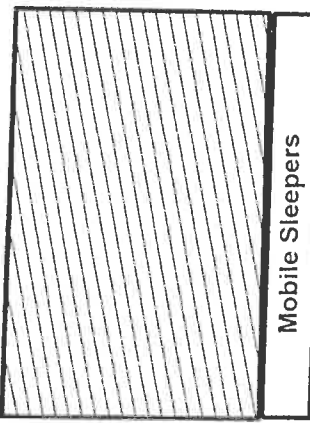
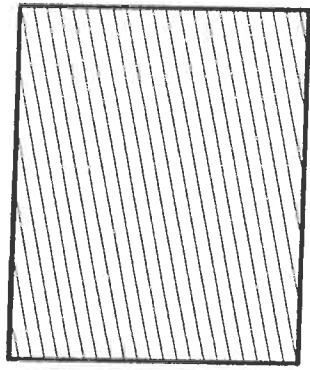
Sleeping Area

Enter

Exit

Reefer

Supply







# ACTIVITY LOG (ICS 214)

<b>1. Incident Name:</b> Dolan Fire	<b>2. Operational Period:</b> Date From: 9-24-2020    Date To: 9-25-2020 Time From: 0700    Time To: 0700
--	--

<b>3. Name:</b>	<b>4. ICS Position:</b>	<b>5. Home Agency (and Unit):</b>
-----------------	-------------------------	-----------------------------------

<b>6. Resources Assigned:</b>		
Name	ICS Position	Home Agency (and Unit)

<b>7. Activity Log:</b>	
Date/Time	Notable Activities

<b>8. Prepared by: Name:</b> _____	<b>Position/Title:</b> _____	<b>Signature:</b> _____
------------------------------------	------------------------------	-------------------------

ICS 214, Page 1	Date/Time: _____
-----------------	------------------