

Saturday

INCIDENT ACTION PLAN

DOLAN

CA-LPF-002428

P5NF6M (0507)



OPERATIONAL PERIOD

9/26/2020 0700

to

9/27/2020 0700

This page intentionally left blank



INCIDENT OBJECTIVES (ICS 202)

1. Incident Name: <p style="text-align: center;">Dolan</p>	2. Operational Period:	Date From: 9/26/2020	Date To: 9/27/2020
		Time From: 0700	Time To: 0700

3. Objective(s):

STRATEGIC FRAMEWORK

Implement a full suppression strategy on the Dolan Fire. Values at risk include human safety, private property, National Scenic Byway (Highway 1), Fort Hunter Liggett improvements, and wilderness values. Apply tactics that offer the highest probability of success. Identify, develop and prepare contingency measures in a proactive fashion. Develop and maintain an accurate and timely information sharing process for high value vineyard operations.

MANAGEMENT OBJECTIVES

- Provide for firefighter and public safety through hazard recognition and risk management.
- Reduce the threat to private property, residences, and infrastructure through effective suppression tactics.
- Minimize risk and limit exposure to COVID-19 by following best management practices.
- Reduce the impacts to Wilderness values by applying minimum impact suppression tactics (MIST).
- Coordinate with assigned incident resource advisors to minimize impacts on natural and cultural resources.
- Distribute accurate and timely fire information to cooperators, the public, and stakeholders.
- Manage resources to meet protection objectives while maintaining fiscal accountability.

CONTROL OBJECTIVES

Minimize risk to private property, surrounding communities, and resource values by:

- Maintaining the fire within the existing perimeter along the Highway 1 corridor;
- Keeping the fire south of the Marble Peak Trail (Willow Creek) from Anderson Peak to Arroyo Seco and south of the 19S09 Road (Arroyo Seco River);
- Keeping the fire west of the 19S01 Road (Vasqueros River) and the 19S08 (Reliz River) Road; and
- Keeping the fire north of the line from Highway 1, Prewitt Ridge to the Mckern Road and Nacimiento–Ferguson Road to Del Venturi and Milpitas Heights Road.

5. Site Safety Plan Required? Yes No

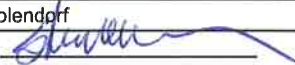
Approved Site Safety Plan(s) Located at:

6. Incident Action Plan

<input checked="" type="checkbox"/> ICS 203	<input checked="" type="checkbox"/> Safety Message	<input checked="" type="checkbox"/> Finance Message	<input checked="" type="checkbox"/> DMOB List
<input checked="" type="checkbox"/> WX	<input checked="" type="checkbox"/> ICS 215a	<input checked="" type="checkbox"/> Information	<input type="checkbox"/> Phone List
<input checked="" type="checkbox"/> Fire Behavior	<input checked="" type="checkbox"/> ICS 205	<input type="checkbox"/> READ	<input type="checkbox"/> Travel Map
<input checked="" type="checkbox"/> ICS 204	<input checked="" type="checkbox"/> ICS 206	<input type="checkbox"/> HR	<input checked="" type="checkbox"/> Base Map
<input checked="" type="checkbox"/> ICS 220	<input checked="" type="checkbox"/> COVID/ Logs	<input checked="" type="checkbox"/> Training	<input checked="" type="checkbox"/> ICS 214

7. Prepared By: Steve Anderson	Position/Title: PSC	Signature:
8. Approved by Incident Commander:	Jimmy Harris	Signature:

ORGANIZATION ASSIGNMENT LIST (ICS 203)

1. Incident Name: Dolan		2. Operational Period: Date From: 9/26/2020 Time From: 0700		Date To: 9/27/2020 Time To: 0700	
3. Incident Commander(s) and Command Staff:			7. Operation Section:		
IC/UC's	Jimmy Harris, Jon Lucas (T)	Operations	Stephen Fillmore		
Deputy	Tom Clemo	Planning Ops	Mark Smith, Scott Grasmick (T)		
Safety Officer	Rick Bertram, Tom Zeulner	Day Ops	Shaun Craig, Scott Cones (T)		
Information Officer	Tom Stokesberry, Lisa Walker (T), Deborah Carlisi (T)	Night Ops	Terry Walter, Joe Tieso (T)		
Liaison Officer	Bob Neumann, Ray Cablayan, Diane Cross, Jeff Jones (V)	Branch	I	Mike Milkovitch , Mark Gerwe (T)	
4. Agency/Organization Representatives:		Division/Group	F/K	Unstaffed	
Agency/Organization	Name	Division/Group	A/Z	Jeff Goyings	
Los Padres AREP	Chris Dowling, Jeremy Marshal, Tony Martinez	Division/Group	Y/X	Corey Stowe, Kenn Perreault (T)	
Big Sur Fire Dep.	Matt Harris	Division/Group			
Fort Hunter Liggett	Jeff Manetti	Division/Group			
Monterey Sheriff	Maoirriano	Branch	IV	Unstaffed	
CHP	M. Olta, J. Yerace	Division/Group	W/S/R	Erick D'Amico	
CA OES	Steve Sjotvedt	Division/Group	O/P	Dan O'Connor	
CA State Parks	M. A. Khalar	Division/Group	M	Chris Linane, Patrick Blair (T)	
PG&E	G. Money	Division/Group			
		Division/Group			
		Branch			
		Division/Group	Night	Jason Westholter	
		Division/Group			
		Division/Group			
		Division/Group			
		Division/Group			
		Branch			
		Division/Group			
5. Planning Section:		Division/Group			
Chief	Steve Anderson	Division/Group			
Deputy	Michael LaPlant	Division/Group			
Resource Unit	Greg White	Division/Group			
Situation Unit	Christina Barba, Mike Held, Mike Callahan (T)	Branch			
Documentation Unit	Michael Belmonte (T)	Division/Group			
Demobilization Unit	Tim Sandstrom (T), Josh Clark (T)	Division/Group			
GISS	Mariyn Porter, Greg Elwood, Erin Opliger (T)	Division/Group			
FBAN	Nick Elmquist	Division/Group			
IMET	Royce Fontenot, Kurt VanSpeybrock	Division/Group			
Training Tech Spec	Jesse Roach (V)	Air Operations Branch		Director:	John Crotty
ITSS	Marty Cohn, Victor Taus	Air Support Group Supervisor		Eric Verdries, Seth Larson (T)	
Lead READ	Kyle Kinports, Monique Sanchez (T)	Air Tactical Group Supervisor			
6. Logistics Section		Tusi Helibase Manager		J.D. Dominques	
Chief	Mike Beeman, Tom Crakes	Secco Helitorch Base		Matt Carter	
Supply Unit	John Harkleroad, Trish Dutrey	8. Finance/Administration Section:			
Facilities Unit	Mike Farmer, Tim Murdoch	Chief AnnMarie Carlson			
Ground Support Unit	John Badaracco	Procurement Unit			
Communications Unit	David Paschke, Rick Smith, Jeff Davis (T)	Comp/Claims Unit			
Medical Unit	Robert Ethridge	Cost Unit	Lee Piper		
Food Unit	Snow Talifero (T), Tim Murdoch (T)	Personnel Time	Pam Killingsworth		
COVID	Jim Emerson	Equipment Time	Amanda Folendorf		
Prepared By: Name:	Steve Anderson	Position/Title:	PSC	Signature:	
ICS 203		Date/Time:	9/25/2020 2300 hours		



Fire Weather Forecast

SATURDAY, SEPTEMBER 26 2020



FORECAST NO: 35
PREDICTION FOR: Saturday
SHIFT DATE: September 26, 2020
ISSUED: 2000 Friday, Sept 25, 2020

NAME OF FIRE:
UNIT:
Incident Meteorologist:

Dolan
USFS/LPNF
Royce Fontenot /s/
(240) 499-6642

DISCUSSION: Temperatures will soar today over the fire as high pressure builds over the West Coast. High temperatures will reach the mid 90's at lower elevations to the mid to upper 80's at higher elevations. Winds will strengthen today from the northeast with gusty winds likely over higher terrain. Humidity values will also drop with afternoon values into the mid to upper teens. Winds are expected to diminish somewhat after sunset but continue overnight. Expect the strongest overnight winds in the higher terrain in Divisions P/K/W. Overnight humidity recovery will be moderate to good inland but will generally remain poor to fair in the higher elevations. Winds are expected to continue through sunrise Sunday before diminishing through the day. Expect continued warming and drying on Sunday.

SATURDAY:

- WEATHER: Clear.
- WIND (20 FT):

Coast:	Onshore 4-6 mph. 5-8 mph Dolan Rock to Lucia along Highway 1.
Inland:	Terrain driven 3-6 mph becoming N-NE 8-11 mph by 1000. Gust to 20 mph along high ridges. Div W: NE 9-11 mph gust to 15 mph after 1100.
Arroyo Seco:	Terrain driven 2-4 mph then up-valley 6-9 mph by 1200. Gusts to 20 mph After 1400.
- MAX TEMPERATURES: Highs 64-68 near the coast. 88-95 inland and Arroyo Seco.
- MIN RH: 60-70% near the coast. 16-21% inland.
- INVERSION LIFT/MIXING HEIGHT: 0900 hrs/4500 feet MSL
- TRANSPORT WINDS: NW 10 mph
- MARINE LAYER 100 FT Coastal Branch

SATURDAY NIGHT:


- WEATHER: Clear
- WIND (20 FT): NE 4-6 mph with gusts to 10 mph. NE 8-11 mph with gusts to 15 mph along high ridges in Div P/K/W
- MIN TEMPERATURES: 55-60 near the coast, 50-55 inland and Arroyo Seco, 65-70 above 1500 feet MSL.
- MIN RH: 70-80% near the coast and Arroyo Seco. 50-70% lower inland areas, 20-30% higher terrain.
- INVERSION: 2000 feet MSL / Strong
- TRANSPORT WINDS: N 10 mph
- MARINE LAYER 300 FT coastal branch

SUNDAY:

- WEATHER: Clear.
- WIND (20 FT):

Coast:	Onshore 4-6 mph.
Inland:	NE 4-7 mph becoming E-NE 6-9 mph by 1200. Gust to 15 mph along high ridges. Div W: NE 5-8 mph gust to 13 mph after 1200.
Arroyo Seco:	Terrain driven 2-4 mph then up-valley 5-7 mph by 1200. Gusts to 15 mph After 1400.
- MAX TEMPERATURES: Highs 64-68 near the coast. 92-98 inland and Arroyo Seco. 82-86 above 2000 feet MSL
- MIN RH: 55-65% near the coast. 14-19% inland.
- INVERSION LIFT/MIXING HEIGHT: 0900 hrs/4500 feet MSL
- TRANSPORT WINDS: N-NE 5 mph
- MARINE LAYER 200 FT Coastal Branch

FIRE BEHAVIOR FORECAST

FORECAST NUMBER: 36	TYPE OF FIRE: Wildfire
FIRE NAME: Dolan	OPERATIONAL PERIOD: Sept. 26, 2020 24hr
DATE ISSUED: Sept. 25, 2020	TIME ISSUED: 1900 hours
UNIT: CA-LPF	SIGNED: 
Typed/printed: Nic Elmquist, FBAN	

Weather Summary

Please see attached Fire Weather Forecast

High Temps: 89^o-95^o (inland), 64^o-68^o (coast) Min RH's: 16-21% (inland), 60-70%(coast)
Winds: Terrain driven 3-6 mph becoming E-NE 8-11 mph by 1200. Gust to 20 mph along ridges.

FIRE BEHAVIOR

GENERAL:

Winds are forecasted to become stronger in the afternoon and remain gusty through the overnight hours. The increased winds should add life to any remaining heat sources across the fire. The northerly winds will be most adverse for the south flank (Div. W) and will be strongest along the higher elevations. Continue to utilize aircraft to provide intel and to keep anything with potential to impact the containment lines pinned down before it gets established. For the next several days, conditions will exist to support large fire growth any new fire starts across the forest.

Probability of ignition during peak burn period (1200-1600): 80-90%; Burning Index: 130

Local Thresholds: Combinations of any of these factors can lead to greatly increased fire behavior: **20' windspeed over 7 mph**, relative humidity <17%, temperature over 98, **10-Hour Fuel Moisture less than 6.**

SPECIFIC:

Branch I: Good work knocking the heat out of problem areas which could be problematic as the weather turns less favorable in the coming days. Focus your patrols on unburned islands near the infrastructure at the Hermitage, Mill Creek, Limekiln State Park, and Pacific Valley. Although the afternoon winds should not be as strong along the lower elevations, they should be blowing across the line in Div. X along Prewitt Ridge.

Branch IV: The key areas to focus your efforts continue to be near the Bridge Dip near the Arroyo Seco River in Div. M, the unburned islands off the dozer line leading up to Junipero Serra Peak in Div. P, and reburn potential especially in the drainage leading up to H-55 in Div. W. Keep up the good work and stay vigilant with the forecasted warm, dry, and windy conditions.

AIR OPERATIONS:

Other than afternoon breezy conditions, there should not be any factors impacting aerial operations today.

SAFETY

Be heads up when working (or parking) in and around the trees. They have been drought stressed and fire weakened. The oak trees in this area have been impacted by "sudden oak death" causing them to shed limbs. Look Up, Look Down, Look Around and review the Hazard Tree Safety (IRPG – pg. 22).

****Continue to communicate your weather observations.**

ASSIGNMENT LIST (ICS 204 WF)

CONTROLLED UNCLASSIFIED
INFORMATION//BASIC

1. Incident Name: <div style="text-align: center; font-weight: bold; font-size: 1.2em;">Dolan</div>	2. Operational Period: Date From: 09/26/20 Date To: 09/27/20 Time From: 0700 Time To: 0700	3. Branch Division <div style="text-align: center; font-size: 1.5em; font-weight: bold;">I F/K</div>
4. Operations Personnel:		Page 1 of 1 Foxtrot/Kilo

Operations Section Chief: Stephen Fillmore	Day Ops: Shaun Craig, Scott Cones (T)
Branch Director: Mike Milkovitch , Mark Gerwe (T)	Branch Safety: David Hade, Scott Roeber
Division/Group Supervisor: Unstaffed	Air Attack:

5. Resources Assigned:	***Resouces in BOLD are identified as IA resources***						
Resource Identifier	ALS	LWD	Leader	Personnel	Request #	Hours	Reporting Location
UNSTAFFED							

6. Work Assignments:

7. Special Instructions:

-All medical resources MUST check in with Dolan Communications once in place, see medical plan for REMS availability.

-Ambulances will be located on paved roads for patient transport only.

-READs will check in and out with Division.

-Assume all divisions have Sudden Oak Death Pathogen and clean and disinfect everything. **No weed wash is available use a commercial wash station where sump collection is done to prevent the further spread.**

-For Mop up and Patrol – Do not go off the road (UXO).

-Utilize Collector App or Avenza and mark all accountable property (pumps, hose, tanks,...), attach a picture of the serial number with the LAT and LONG.

8. Communications


Name	Ch	Function	Rx Freq	Rx Tone	Tx Freq	Tx Tone	Notes
CMD 1	1	COMMAND	170.9750	110.9	168.7000	110.9	C1 ANDERSON PEAK NORTHERN DIV A
TAC 2	8	TACTICAL	168.6000	110.9	168.6000	110.9	NIFC T3
A/G TAC	14	A/G TACTICAL	163.1500		163.1500		
CALCORD	15	MEDEVAC A/G	156.0750	156.7	156.0750	156.7	MEDICAL EVAC EMERGENC
GUARD 18	16	AIRGUARD	168.6250		168.6250	110.9	EMERGENCIES ONLY

9. Prepared by: Name: Greg White RESL Signature:

ICS 204 Date/Time: 9/25/2020 2200 Personnel Count: 0

ASSIGNMENT LIST (ICS 204 WF)

CONTROLLED UNCLASSIFIED
INFORMATION//BASIC

1. Incident Name: <div style="text-align: center; font-weight: bold;">Dolan</div>		2. Operational Period: Date From: 09/26/20 Date To: 09/27/20 Time From: 0700 Time To: 0700			3. Branch Division <div style="text-align: center; font-weight: bold;">IV W/S/R</div>		
4. Operations Personnel:				Page 1 of 2			
Operations Section Chief: Stephen Fillmore		Day Ops: Shaun Craig, Scott Cones (T)		Branch Safety: Timothy Benedict, Thomas Dunn (T), Tom Plymale			
Branch Director: Unstaffed		Division/Group Supervisor: Erick D'Amico		Air Attack:			
5. Resources Assigned:		***Resources in BOLD are identified as IA resources***					
Resource Identifier	ALS	LWD	Leader	Personnel	Request #	Hours Reporting Location	
CRW2IA VENTANA		10/2	HAROLD COOK	19	C-71	0700-1900 MISSION SPIKE	
STC XSD 6430C	X	10/1	POST, SCOTT	22	E-330	0700-1900 MISSION SPIKE	
ENG3 CA-PRK 344		10/6	FLORENDO, JOHN	4	E-456	0700-1900 MISSION SPIKE	
ENG3 CA-FHL E8833		10/6	GARDNER, CLAYTON	5	E-455	0700-1900 MISSION SPIKE	
ENG3 AZ-CEA ENG 66		10/5	KOONCE, MIKE	4	E-410	0700-1900 MISSION SPIKE	
ENG3 CAMINOS FIRE AZ-TDC		9/28	ROADS, JOHN	3	E-409	0700-1900 MISSION SPIKE	
ENG3 LPF-E315		10/3	NICK VALENTIN	5	E-22	0700-1900 MISSION SPIKE	
ENG3 IN NPS E-5673		10/6	RAMIREZ, BRANDON	5	E-143	0700-1900 MISSION SPIKE	
SKGN ZEB'S TREE 42083		9/28	STAFF, DOUG	2	E-335	0700-1900 MISSION SPIKE	
PCT2 ABLE SERV D6R		10/4	KRISTEN SHERRI	2	E-369	0700-1900 MISSION SPIKE	
WTS1 - NORTHSTATE #348		10/2	BAKER, KIMBER	1	E-231	0700-1900 MISSION SPIKE	
TFLD GOTTSBEHEUT		9/30	GOTTSBEHEUT, CHAD	1	O-891	0700-1900 MISSION SPIKE	
TFLD SCHWANTES (T)		9/30	SCHWANTES, JOSEPH	1	O-893	0700-1900 MISSION SPIKE	
HEQB EROSKY (T)		9/26	EROSKY, SHANE	1	O-842	0700-1900 MISSION SPIKE	
HEQB DAHLBERG (T)		10/8	DAHLBERG, DAVID	1	O-1068	0700-1900 MISSION SPIKE	
EMTF HASSLINGER (DIV W)		9/30	HASSLINGER, JOHN	1	O-901	0700-1900 MISSION SPIKE	
6. Work Assignments:							
TASK: Establish containment line, patrol and extinguish (where possible) any heat or threat along the fire perimeter. Identify potential medical hoist or evacuation locations for air operations approval.							
PURPOSE: Keep fire within existing containment lines providing for public safety.							
END STATE: Community and Fort Hunter Liggett protected.							
RISK ASSESSMENT: Watch for ash pits when mopping up and be alert for vehicle traffic.							
7. Special Instructions:							
-All medical resources MUST check in with Dolan Communications once in place, see medical plan for REMS availability.							
-Ambulances will be located on paved roads for patient transport only.							
-READs will check in and out with Division.							
-Assume all divisions have Sudden Oak Death Pathogen and clean and disinfect everything. No weed wash is available use a commercial wash station where sump collection is done to prevent the further spread.							
-For Mop up and Patrol – Do not go off the road (UXO).							
-Utilize Collector App or Avenza and mark all accountable property (pumps, hose, tanks,...), attach a picture of the serial number with the LAT and LONG.							
8. Communications							
Name	Ch	Function	Rx Freq	Rx Tone	Tx Freq	Tx Tone	Notes
CMD 2	2	COMMAND	173.0250	110.9	165.3875	110.9	C41 JUNIPERO SERRA PEAK
TAC 4	10	TACTICAL	166.7750	110.9	166.7750	110.9	NIFC T6
A/G TAC	14	A/G TACTICAL	163.1500		163.1500		
CALCORD	15	MEDEVAC A/G	156.0750	156.7	156.0750	156.7	MEDICAL EVAC EMERGENC
GUARD 18	16	AIRGUARD	168.6250		168.6250	110.9	EMERGENCIES ONLY
9. Prepared by: Name:		Greg White		RESL		Signature: 	
ICS 204		Date/Time: 9/25/2020 2200		Personnel Count: 77			

ASSIGNMENT LIST (ICS 204 WF)

CONTROLLED UNCLASSIFIED
INFORMATION//BASIC

1. Incident Name: <div style="text-align: center; font-weight: bold;">Dolan</div>		2. Operational Period: Date From: 09/26/20 Date To: 09/27/20 Time From: 0700 Time To: 0700				3. Branch Division <div style="text-align: center; font-size: 1.2em; font-weight: bold;">IV O/P</div>	
4. Operations Personnel:					Page 1 of 1 Oscar/Papa		
Operations Section Chief: Stephen Fillmore				Day Ops: Shaun Craig, Scott Cones (T)			
Branch Director: Unstaffed				Branch Safety: Timothy Benedict, Thomas Dunn (T), Tom Plymale			
Division/Group Supervisor: Dan O'Connor				Air Attack:			
5. Resources Assigned: ***Resources in BOLD are identified as IA resources***							
Resource Identifier	ALS	LWD	Leader	Personnel	Request #	Hours	Reporting Location
SMOD MONTROSE		10/2	JOSEPH VAN NURDEN	4	O-749	0700-1900	MISSION SPIKE
TFLD (T) MESERTH		9/28	MESERTH, MORGAN	1	O-834	0700-1900	MISSION SPIKE
EMPF JACKSON (DIV P/R/S)	X	9/26	JACKSON, ZACH	1	O-787	0700-1900	MISSION SPIKE
EMTF BAILEY (DIV P/R/S)		10/4	BAILEY, GAGE	1	O-940	0700-1900	MISSION SPIKE
6. Work Assignments:							
TASK: Utilize IR and UAS data to direct strategic suppression efforts and validate existing contingency lines. Identify potential medical hoist or evacuation locations for air operations approval.							
PURPOSE: To maintain the fire's current identified perimeter.							
END STATE: Threat of further growth is reduced and eliminated.							
RISK ASSESSMENT: Maintain LCES during line construction, watch for snakes and bees, stay hydrated, and ensure trigger points are in place during line construction.							
7. Special Instructions:							
-All medical resources MUST check in with Dolan Communications once in place, see medical plan for REMS availability.							
-Ambulances will be located on paved roads for patient transport only.							
-READs will check in and out with Division.							
-Assume all divisions have Sudden Oak Death Pathogen and clean and disinfect everything. No weed wash is available use a commercial wash station where sump collection is done to prevent the further spread.							
-For Mop up and Patrol – Do not go off the road (UXO).							
-Utilize Collector App or Avenza and mark all accountable property (pumps, hose, tanks,...), attach a picture of the serial number with the LAT and LONG.							
8. Communications							
Name	Ch	Function	Rx Freq	Rx Tone	Tx Freq	Tx Tone	Notes
CMD 6	6	COMMAND	170.0125	110.9	165.2500	110.9	C9 PINYON PEAK
TAC 3	9	TACTICAL	166.7250	110.9	166.7250	110.9	NIFC T5
A/G TAC	14	A/G TACTICAL	163.1500		163.1500		
CALCORD	15	MEDEVAC A/G	156.0750	156.7	156.0750	156.7	MEDICAL EVAC EMERGENC
GUARD 18	16	AIRGUARD	168.6250		168.6250	110.9	EMERGENCIES ONLY
9. Prepared by: Name: Greg White RESL							
						Signature:	
ICS 204	Date/Time: 9/25/2020 2200				Personnel Count: 7		

This page intentionally left blank



AIR OPERATIONS SUMMARY
DAY/NIGHT
ICS 220

Prepared By: John Crotty
 AOBD

Prepared Date: 9/25/20

Prepared Time: 1800

1. INCIDENT NAME: Dolan Fire	2. OPS PERIOD DATE: 9/26/20	START TIME: 0700	END TIME: 2100	SUNRISE: 0656	SUNSET: 1854
------------------------------	-----------------------------	------------------	----------------	---------------	--------------

3. REMARKS (Safety Notes, Hazards, Air Operations Special Equipment, etc.): Track all dipsite locations/number of dips/gallons taken. Track all drop locations/number of drops/gallons dropped. All GPS data to be collected in DEGREES, MINUTES, DECIMAL MINUTES format. AVOID Aerial Application of Retardant/Foam/Agent within 300' of Waterways, Bodies of Water, etc If Retardant/Foam/Agent is dropped within these areas immediately notify the AOBD and provide the following information: Lat/Long, estimated number of gallons and a map detailing the area. CAUTION Military Flight Routes CAUTION POWERLINES and SMOKE.	4. Helibase Information: Tusi Helibase: 35 59.687 121 14.202 Seco Helitorch Base: 36 13.820 121 27.930 Gruver MRB: 36 14.637 121 25.933	5. TFR's: Polygon Shape Altitude: 10,000' MSL NOTAMS: 0/7430 Frequency: 127.0250 http://tfr.faa.gov
---	--	---

6. PERSONNEL	NAME	PHONE #	7. FREQUENCIES	RX	TX	TONE	AM/FM	8. MEDIVAC SHIP INFORMATION
AOBD	John Crotty	805-440-6186	AIR TACTICS	164.6000	164.6000		FM	Day: Night:
ASGS	Eric Verdries	805-455-5569	TFR Victor	127.0250	127.0250		AM	CHP H70 Paso Robles Hoist
ASGS (T)	Seth Larson	805-886-5850	Rotor Victor	121.0250	121.0250		AM	
Tusi Helibase	John Kaisersatt	805-878-4755	Tusi Advisory	126.200	126.200		AM	Mercy Air 20 (FHL)
Secco Helitorch Base	Matt Carter	805-345-6940	A/G COMMAND	167.5500	167.5500		FM	
			A/G TACTICAL	163.1500	163.1500		FM	Cal Star 5 Salinas
			Deck	168.3500	168.3500		FM	
			Fire Service Net	171.5000	164.8250	146.2	AM	Santa Barbara H308 NVG/ALS Hoist
			CALCORD	156.0750	156.0750	(T6) 156.7	FM	
			Air Guard	168.6250	168.6250	(T1) 110.9	FM	

HELICOPTERS

FAA N#	T	MAKE/MODEL	BASE	STA RT	AVAIL	REMARKS	FAA N#	T	MAKE/MODEL	BASE	START	AVAIL	REMARKS
3CH	1	CH-47	Tusi	0700	0830	Bucket	528	2	Bell 212 HP	Tusi	0700	0830	EU
3RA	1	KMAX	Tusi	0700	0830	Bucket	7DP	3	Bell 407	Tusi	0700	0830	Recon/LL
							527	2	Bell 205++	SECO Torch Base	0700	0830	EU/Torch

UAS / FIXED WING

FAA N#	T	MAKE/MODEL	BASE	STA RT	AVAIL	REMARKS	FAA N#	T	MAKE/MODEL	BASE	START	AVAIL	REMARKS

Missions:	Aircraft	AVAIL	Departure Point	Destination	Remarks
Bucket Support	ALL	0830	Tusi/SECO	Fire	Water dropping requested by Ops, Branch, Division or Air Attack
RECON	ALL	0830	Tusi/SECO	Fire	As requested. Coordinate requests with AOBD.
Retardant		0830	MRB	Fire	On request: Check application avoidance areas
MEDIVAC		24 Hr.		As requested	Request through Communication on Command Repeater. Give location: lat/long if known, and current visibility. Check Medical Plan/IAP.
Repeater			Tusi/Seco	As requested	
Cargo	TBD	0830	Tusi/Seco	Fire	All sling logistic request due to communications by 1200
Initial Attack	TBD	0830	Tusi/SECO	TBD	Provide IA Helitack and loan copters on request
Air Attack	TBD		TBD		As requested. Coordinate with AOBD.

DOLAN FIRE SAFETY MESSAGE

Safety is no accident...it's on purpose.

INCIDENT: Dolan Fire

DATE: September 26, 2020

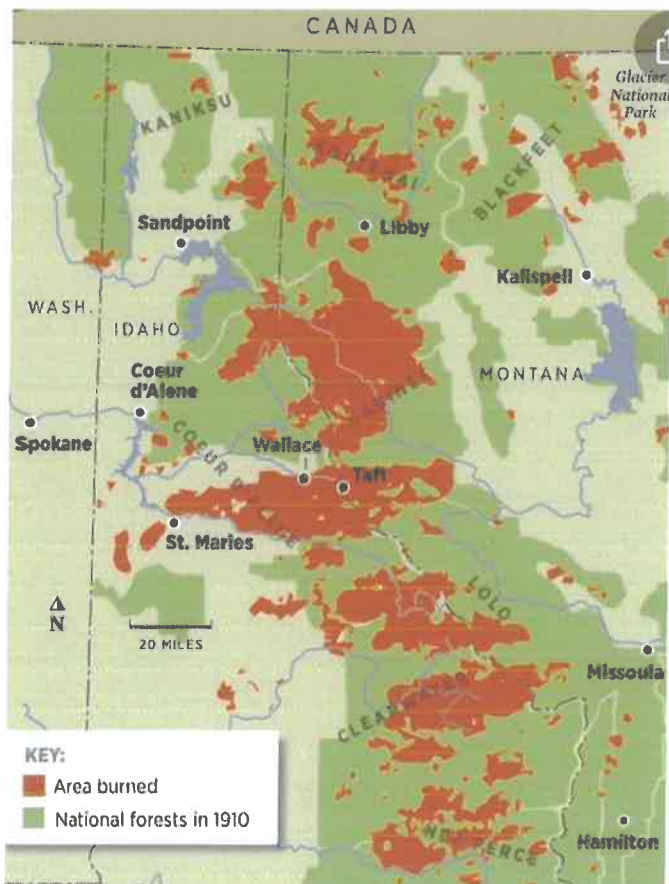
TIME: 0700-0700

Major Hazards and Risks:

- **DRIVING** - Keep your speeds down. Drive like your life depends on it.
- **STEEP TERRAIN AND ROLLING MATERIALS** - Watch for boulders that can roll out.
- **POTENTIAL FOR EXTREME FIRE BEHAVIOR** - All fuels are available and can burn aggressively. Ensure LCES. Heat and Wind are coming.
- **DEHYDRATION** - Fill up early and often.
- **FATIGUE** - Look for signs of fatigue and mitigate them.
- **WORKING UNDER HELICOPTERS** - Stay engaged if helicopters are in the area.
- **SNAGS AND FIRE WEAKENED TREES** - Look up and live.
- **COVID IS A RISK** - Use COVID precautions.
- **POISON OAK** - Avoid, Avoid, Avoid.
- **ASH PITS** - Watch out for ash pits while in mop up phase.
- **UN-EXPLODED ORDNANCE** - Stay on road system while on Fort Hunter Liggett.

Narrative: The Big Burn (aka The Great Fire) occurred on August 20 and 21, 1910 in Northern Idaho and Western Montana. No official cause was ever listed for the 1910 fire. The year 1910 was also the driest year in anyone's memory. It was one of the largest forest fires in American history. Maybe even one of the largest forest fires ever anywhere in the world. No one knows for sure, but even now, it is hard to put into words what happened and why.

The Big Burn Fire Map



The Big Burn (cont.):

For two terrifying days and nights the fire raged across three million acres of virgin timberland. Many thought the world would end, and for 86 fire victims, it did (most were firefighters). Most of what was destroyed fell to hurricane-force winds that turned the fire into a blowtorch. Re-constructing what happened, leads to an almost impossible conclusion: **Most of the devastation occurred in a six-hour period.**

On August 19th there were over 1,700 fires burning in Northern Idaho and Western Montana. Most of them were under control. On Saturday afternoon, August 20, all hell broke loose. Hurricane-force winds, unlike anything seen since, roared across the rolling country of eastern Washington into Idaho and Montana. In a matter of hours, fires became firestorms, and trees by the millions became exploding candles.

Millions more trees, sucked from the ground, roots and all, became flying blowtorches. By noon on the August 21st, daylight was dark as far north as Saskatoon, Canada, as far south as Denver, and as far east as Watertown, New York. Soot fell on the ice in Greenland.

After August 22nd, the winds slowed and temperatures dropped. On the night of the 23rd, a general light rain, with snow in the higher elevations eventually checked the flames. You are on the Dolan Fire and heat and wind are coming! Read the "Big Burn" by Timothy Egan

INCIDENT SAFETY ANALYSIS 215a

Dolan Fire - Saturday, September 26, 2020

8. Location	9. Hazard	6. Control or Abatement Action (Engineering, Administrative, PPE, Avoidance, Education, etc)
All	Driving & Traffic	<ul style="list-style-type: none"> ~ Practice "Defensive Driving" techniques traveling on all roads and city streets. ~ Use spotters when backing. ~ Honk horn to alert personnel when backing. ~ Keep clutter off dash and inside cab. ~ Follow Driving LCES (Lights, Chock blocks, Emergency brake, Seat belts). ~ Always use headlights. ~ Yield to pedestrians and bicycles. ~ Observe posted speed limits. ~ Use the 3 second rule for following distance when driving. ~ Use chock blocks, turn wheels into hill. ~ Avoid distractions (eating, cell phones, radio). ~ Ensure that windshields are kept clean of dust and bugs.
ALL	Potential Extreme Fire Behavior	<ul style="list-style-type: none"> ~ Share weather observations with all personnel assigned to division. ~ Establish "Trigger Points" to withdraw. ~ Use "Risk Management" process prior to engaging in suppression actions, refer to page 1, IRPG.
All	Mop-up & Rehab	<ul style="list-style-type: none"> ~ Do not work above or below personnel during rehab/mop-up operations. ~ Alert crew personnel of rolling debris by yelling to affected individuals. ~ Position debris that could roll vertically on slope. ~ Wear eye protection.
All	Helicopter Operations	<ul style="list-style-type: none"> ~ Stay clear of all bucket drops when suppression actions are in place and allow 1 minute prior to re-entry. ~ Monitor A-G communications. ~ Follow aviation safety guidelines in IRPG P. 58 and IHOG.
ALL	Chain Saw Operations	<ul style="list-style-type: none"> ~ Follow "Hazard Tree Safety" guidelines, IRPG page 22 ~ Look up, Look down, Look around for hazard tree indicators. ~ Only fell and buck trees within your expertise, and training. ~ Follow "Procedural Felling Operations" on IRPG page 85. ~ Do not fall trees during high wind events. ~ Ensure proper use of all required PPE.
BR 4	Downhill Line Construction	<ul style="list-style-type: none"> ~ Watch for rolling materials ~ Ensure escape routes are realistic ~ Ensure radio communications are good ~ Watch footing and crew spacing ~ Post lookouts ~ Review IRPG P.9 prior to engagement ~ Review IRPG P.7
ALL	Unburned Area/Reburn Potential	<ul style="list-style-type: none"> ~ Monitor weather. ~ Base actions upon observed and predicted fire behavior. ~ LCES Checklist (IRPG pg. 6). ~ Look Up, Down and Around IRPG page 3-4.
ALL	Unidentified Hazardous Waste and Unexploded Ordinance	<ul style="list-style-type: none"> ~ Avoid identified Hazmat and UXO areas ~ Use "Unexploded Ordinance Safety" guidelines IRPG Page 27 ~ Deny entry to others. Do not transmit on radio if in proximity ~ Map location of all UXO and Hazmat.
ALL	Poisonous Plants	<ul style="list-style-type: none"> ~ Identify and Avoid hazard areas. ~ Launder clothing. ~ Shower frequently.
All / CAMPS	COVID-19	<ul style="list-style-type: none"> ~ Maintain at least 8' distancing from others at all times ~ Work as a unit of 1 for duration of incident ~ Wear masks around others if 6' distancing isn't maintained ~ Wear masks in camp at all times \ if no ones around use common sense ~ Wash hands often and use hand sanitizer through out the day ~ Report any illness to supervisor immediately and remove yourself from others ~ Notify Medical Unit of any illness ~ Do not share tools or equipment ~ Do not touch any part of your face
ALL	Night Operations	<ul style="list-style-type: none"> ~ Maintain high visibility in work area and wear vest while in roadway. ~ Use glow sticks to mark hazards. ~ Ensure personnel have a personal light (headlamp). ~ Watch for signs of fatigue. ~ Take breaks away from areas of known hazard.
ALL	Spike Camp	<ul style="list-style-type: none"> ~ Keep a clean camp. ~ Ensure communications are in place. ~ Review and observe "Line Spike" considerations IRPG page 95.
ALL	Mines	<ul style="list-style-type: none"> ~ Identify and avoid mining areas. ~ Notify others of hazard.


ICS 205 - INCIDENT RADIO COMMUNICATIONS PLAN

CONTROLLED UNCLASSIFIED INFORMATION//BASIC

1. Incident Name: Dolan Incident Channels
 2. Date/Time Prepared: 09/25/2020
 Date: 09/25/2020
 Time: 1930
 3. Operational Period:
 Date From: 09/26/20
 Time From: 0700
 Date To: 09/27/20
 Time To: 0700

4. Communications		Name	Assigned To	Rx Freq	Rx Tone	Tx Freq	Tx Tone	Notes
1	COMMAND	CMD 1	ALL DIVS	170.9750	110.9	168.7000	110.9	C1 ANDERSON PEAK NORTHERN DIV A
2	COMMAND	CMD 2	ALL DIVS	173.0250	110.9	165.3875	110.9	C41 JUNIPERO SERRA PEAK
3	COMMAND	CMD 3	ALL DIVS	172.0750	110.9	162.2000	110.9	C47 CONE PEAK SOUTHERN DIV A, Z
4	COMMAND	CMD 4	ALL DIVS	171.0875	110.9	164.0125	110.9	C32 ALDER PEAK
5	COMMAND	CMD 5	ALL DIVS	173.8250	110.9	165.3625	110.9	C34 CHEWS RIDGE
6	COMMAND	CMD 6	ALL DIVS	170.0125	110.9	165.2500	110.9	C9 PINYON PEAK
7								
8	TACTICAL	TAC 2	DIV A, F, K, Z NIGHT OPS	168.6000	110.9	168.6000	110.9	NIFC T3
9	TACTICAL	TAC 3	DIV M, O, P	166.7250	110.9	166.7250	110.9	NIFC T5
10	TACTICAL	TAC 4	DIV R, S, W	166.7750	110.9	166.7750	110.9	NIFC T6
11								
12	TACTICAL	VFIRE 21	DIV Y/X	154.2800	156.7	154.2800	156.7	
13	A/G COMMAND	A/G CMD	ALL DIVS	167.5500		167.5500		
14	A/G TACTICAL	A/G TAC	ALL DIVS	163.1500		163.1500		
15	MEDEVAC A/G	CALCORD	ALL DIVS	156.0750	156.7	156.0750	156.7	MEDICAL EVAC EMERGENCIES ONLY
16	AIRGUARD	GUARD 18	ALL DIVS	168.6250		168.6250	110.9	EMERGENCIES ONLY
17								
18								
19								
20	AIRGUARD	GUARD 18	ALL DIVS	168.6250		168.6250	110.9	EMERGENCIES ONLY

5. Special Instructions

6. Prepared by (Communications Unit Leader): Name: DAVE PASCHKE COM1 JEFF DAVIS COM1-L-T
 Signature: 
 Date/Time: 09/25/20 1930
 NIMS IAP

ICS 205 - INCIDENT RADIO COMMUNICATIONS PLAN

CONTROLLED UNCLASSIFIED INFORMATION/BASIC

1. Incident Name: Dolan
IA GROUP

2. Date/Time Prepared
 Date: 09/25/2020
 Time: 1930

3. Operational Period:
 Date To: 09/27/20
 Time To: 0700

4. Communications									
Ch#	Function	Name	Assigned To	Rx Freq	Rx Tone	Tx Freq	Tx Tone	Notes	
1	LPF CMD	LPF FN4	ALL DIVS	170.46250		164.91250	136.5	LPF ALDER PEAK T4	
2	LPF CMD	LPF FN6	ALL DIVS	170.46250		164.91250	156.7	LPF PIEDRAS BLANCAS T6	
3	LPF CMD	LPF FN8	ALL DIVS	170.46250		164.91250	103.5	LPF CONE PEAK T8	
4	LPF CMD	LPF FN10	ALL DIVS	170.46250		164.91250	107.2	LPF CHEWS RIDGE T10	
5	LPF CMD	LPF FN13	ALL DIVS	170.46250		164.91250	141.3	LPF ANDERSON T13	
6	LPF CMD	LPF FN15	ALL DIVS	170.46250		164.91250	162.2	LPF MANUEL MT. T15	
7	TACTICAL	LPF T3	ALL DIVS	168.2625		168.2625		LPF TACTICAL 3	
8	TACTICAL	LPF T4	ALL DIVS	163.7125		163.7125		LPF TACTICAL 4	
9	I/A TACTICAL	NIFC T2	ALL DIVS	168.2000		168.2000		NIFC T2 I/A ONLY	
10	LPF A/G	A/G 41	ALL DIVS	167.4750		167.4750		LPF A/G 41 PRIMARY	
11									
12									
13									
14									
15	MEDEVAC A/G	CALCORD	ALL DIVS	156.0750	156.7	156.0750	156.7	MEDICAL EVAC EMERGENCIES ONLY	
16	AIRGUARD	GUARD 18	ALL DIVS	168.6250		168.6250	110.9	EMERGENCIES ONLY	
17									
18									
19									
20	AIRGUARD	GUARD 18	ALL DIVS	168.6250		168.6250	110.9	EMERGENCIES ONLY	

5. Special Instructions

6. Prepared by (Communications Unit Leader): Name: DAVE PASCHKE COM1 JEFF DAVIS COM1-T
 Signature:  Date/Time: 09/25/20 1930
 NIMS IAP

MEDICAL PLAN ICS 206	1. INCIDENT NAME	2. DATE PREPARED	3. TIME PREPARED	4. OPERATIONAL PERIOD
	Dolan Fire	9/25/2020	1900	Day/Night 9/26/20 0700-0700

5. INCIDENT MEDICAL AID STATIONS

MEDICAL AID STATIONS	LOCATION	PARAMEDICS	
		YES	NO
Frontline Medical	ICP	X	

6. TRANSPORTATION

A. AIR AMBULANCES

NAME	LOCATION	PHONE	PARAMEDICS	
			YES	NO
911 Provider Day-Night Mission	Variable - (40 min ETA)	Los Padres ECC 805-961-5727	X	
CHP H70 Hoist Day / Variable Night	Paso Robles, CA - (20 min ETA)	Paso Robles ECC 805-239-3553	X	
Mercy Air Night	FHL, CA - (10 min ETA)	FHL ECC 831-386-2526	X	

B. GROUND AMBULANCES & REM TEAMS

NAME	LOCATION	PARAMEDICS	
		YES	NO
AMR 1	DP 54	X	
AMR 2	DP 72	X	
Atascadero Ambulance	DP 66	X	
REM 2	South Side of Fire		

7. HOSPITALS

NAME	ADDRESS	TRAVEL TIME		PHONE	HELIPAD		BURN CTR	
		AIR	GRND		YES	NO	YES	NO
CHOMP LVL 3	23625 Holman Hwy Monterey, CA	N/A	30 Min	831-624-5311		X		X
Mee Memorial LVL 3	300 Canal St King City, CA	15 Min	60 Min	530-225-6000	X			X
Santa Clara Valley Med Ctr LVL 1	751 S. Bascom Ave.. San Jose, CA NN37 18.7713 X 121 55.9960	45 Min	90 Min	916-734-2011	X		X	
Natividad Medical Center LVL 2	1441 Constitution Blvd. Salinas Ca N36 41.8002 X W121 37.9853	25 Min	60 Min	831-755-6268	X			
Community Regional Med Ctr LVL 1	2823 Fresno St. Fresno, Ca N36 44.5702 X W119 47.0913	90 Min	180 Min	559-459-7401	X		X	

8. MEDICAL EMERGENCY PROCEDURES

LINE-EMERGENCY MEDICAL DAY/NIGHT PLAN:

- **Crew Supervisor** to contact Division Supervisor/Operations with:
 - Patient Complaint, Condition and Location via Tactical or Command frequency. **Priority 1/Red & 2/Yellow** Patients trigger Incident within Incident (IWI).
- **Division Supervisor/Operation** contacts Dolan Communications:
 - Division Supervisor or POC* will run **"Medical -Emergency"** on the Command frequency.
 - Division Supervisor or POC* to use **"Medical Incident Report"** worksheet on back of this page or back of IRPG.
 - Dolan Communication contacts Medical Unit Leader on the Command frequency or camp frequency.

POC* (Point of Contact) and/or Operations

LINE "NON-EMERGENCY INCIDENT" PLAN:

- **Crew Supervisor** to contact Division Supervisor with:
 - Patient Complaint, Condition and Location via Tactical or Command frequency. **Priority 3/Green** Patients **do not** trigger Incident within Incident (IWI).
- **Division Supervisor** contacts Dolan Communications:
 - Division Supervisor or POC* will run **"Non-Emergency Incident"** on the Command frequency.
 - Division Supervisor or POC* will use **"Medical Incident Report"** worksheet on the back of this page or back of IRPG.
 - Dolan Communications contacts Medical Unit Leader on the Command frequency or camp frequency.

IN-CAMP 24 HOUR MEDICAL PLAN:

- Contact Incident Communications with: Patient Complaint, Condition, and Location via **Logs Net** or Command frequency.

ICS 206

9. PREPARED BY: (Medical Unit Leader)
Robert Ethridge MEDL

10. REVIEWED BY: (Safety Officer)
Rick Bertram SOF2 **RB**

Medical Incident Report

FOR A NON-EMERGENCY INCIDENT, WORK THROUGH CHAIN OF COMMAND TO REPORT AND TRANSPORT INJURED PERSONNEL AS NECESSARY.

FOR A MEDICAL EMERGENCY: IDENTIFY ON SCENE INCIDENT COMMANDER BY NAME AND POSITION AND ANNOUNCE "MEDICAL EMERGENCY" TO INITIATE RESPONSE FROM IMT COMMUNICATIONS/DISPATCH.

Use the following items to communicate situation to communications / dispatch.

- CONTACT COMMUNICATIONS / DISPATCH** (Verify correct frequency prior to starting report)
Ex: "Communications, Div. Alpha. Stand-by for Emergency Traffic."
- INCIDENT STATUS:** Provide incident summary (including number of patients) and command structure.
Ex: "Communications, I have a Red priority patient, unconscious, struck by a falling tree. Requesting air ambulance to Forest Road 1 at (Lat./Long.) This will be the Trout Meadow Medical, IC is TFLD Jones. EMT Smith is providing medical care."

Severity of Emergency / Transport Priority	<input type="checkbox"/> RED / PRIORITY 1 Life or limb threatening injury or illness. Evacuation need is IMMEDIATE Ex: Unconscious, difficulty breathing, bleeding severely, 2° – 3° burns more than 4 palm sizes, heat stroke, disoriented. <input type="checkbox"/> YELLOW / PRIORITY 2 Serious Injury or illness. Evacuation may be DELAYED if necessary. Ex: Significant trauma, unable to walk, 2° – 3° burns not more than 1-3 palm sizes. <input type="checkbox"/> GREEN / PRIORITY 3 Minor Injury or illness. Non-Emergency transport Ex: Sprains, strains, minor heat-related illness.
Nature of Injury or Illness & Mechanism of Injury	Brief Summary of Injury or Illness (Ex: Unconscious, Struck by Falling Tree)
Transport Request	Air Ambulance / Short Haul/Hoist Ground Ambulance / Other
Patient Location	Descriptive Location & Lat. / Long. (WGS84)
Incident Name	Geographic Name + "Medical" (Ex: Trout Meadow Medical)
On-Scene Incident Commander	Name of on-scene IC of Incident within an Incident (Ex: TFLD Jones)
Patient Care	Name of Care Provider (Ex: EMT Smith)

3. INITIAL PATIENT ASSESSMENT: Complete this section for each patient as applicable (start with the most severe patient)

Patient Assessment: See IRPG page 106

Treatment:

4. TRANSPORT PLAN:

Evacuation Location (if different): (Descriptive Location (drop point, intersection, etc.) or Lat. / Long.) Patient's ETA to Evacuation Location:

Helispot / Extraction Site Size and Hazards:

5. ADDITIONAL RESOURCES / EQUIPMENT NEEDS:

Example: Paramedic/EMT, Crews, Immobilization Devices, AED, Oxygen, Trauma Bag, IV/Fluid(s), Splints, Rope rescue, Wheeled litter, HAZMAT, Extrication

6. COMMUNICATIONS: Identify State Air/Ground EMS Frequencies and Hospital Contacts as applicable

Function	Channel Name/Number	Receive (RX)	Tone/NAC *	Transmit (TX)	Tone/NAC *
COMMAND					
AIR-TO-GRND					
TACTICAL					

7. CONTINGENCY: Considerations: If primary options fail, what actions can be implemented in conjunction with primary evacuation method? Be thinking ahead.

8. ADDITIONAL INFORMATION: Updates/Changes, etc.

REMEMBER: Confirm ETA's of resources ordered. Act according to your level of training. Be Alert. Keep Calm. Think Clearly. Act Decisively.

COVID-19 Best Practices / Mitigation

Minimize risk and limit exposure to COVID-19 by daily screening, minimizing large group settings, social distancing, wearing face coverings, hand washing, and practicing module of one concept.

At the beginning of the shift, supervisors should remind their personnel to self-screen for symptoms.

WILDLAND FIRE COVID-19 SCREENING TOOL

Today or in the past 24 hours, have you had any of the following symptoms¹?

Symptom
Cough more than expected?
Shortness of breath or difficulty breathing?
Fever? Chills?
Muscle pain, outside your normal for firefighting?
Sore throat?
New loss of taste or smell?
Fatigue, outside your normal for firefighting?
Headache, outside your normal for firefighting?
Congestion or runny nose, outside your normal for firefighting?
Nausea or vomiting
Diarrhea
<i>* Take temperature with no-touch thermometer, if available *</i>

¹Symptoms of Coronavirus

<https://www.cdc.gov/coronavirus/2019-ncov/symptoms-testing/symptoms.html>

Do your part to minimize your risk of exposure and limit the spread COVID-19.

Public Considerations

- ⇒ Wear a face covering when in public.
- ⇒ Wash your hands often.
- ⇒ Use hand sanitizer after pumping gas.
- ⇒ Use hand sanitizer prior to getting into your vehicle after visiting the grocery store or a restaurant.
- ⇒ Set the example while in the public eye.

**Keep in mind that fire camp is in a city with a populous and the potential for the COVID virus to be present is greater.*

If you answered Yes to these symptoms, report it to your supervisor immediately, self-isolate away from other people until given direction and call **MEDICAL**.

Document all contacts with anyone other than your “module of one” for potential contact tracing (on your 214 Unit Activity Log)

Examples of when & what to document:

1. An STL is sitting in a vehicle with a Division Supervisor for 10-15 minutes or greater without wearing a face covering...Document this!
2. Someone from another work group enters your work space without a face covering for 10-15 minutes of greater...Document this!
3. Personnel from Division Alpha ties in with Division Bravo without a face covering and no proper social distancing...Document this!

Arrive healthy, go home healthy!

This page intentionally left blank





COVID-19 OPERATIONAL FLOWCHART

PERSONNEL SHALL BE SCREENED FOR S&S OF COVID-19 AT CHECK-IN

ALL SUPERVISORS SHALL MONITOR THEIR PERSONNEL

- ALL PERSONNEL SHALL:**
- PRACTICE PHYSICAL DISTANCING
 - WEAR A MASK WHEN LESS THAN 6' FROM OTHERS
 - SHALL SELF-MONITOR FOR S&S
 - WASH HANDS OFTEN / USE HAND SANITIZER
 - AVOID FACIAL CONTACT WITH YOUR HANDS
 - NOTIFY THE MEDICAL UNIT OF ANY FLU-LIKE S&S
 - DO NOT SHARE TOOLS / EQUIPMENT

- SIGNS & SYMPTOMS INCLUDE:**
- CHILLS OR FEVER > 100.4°
 - COUGH, AND/OR SHORT OF BREATH
 - LOSS OF TASTE OR SMELL, SORE THROAT
 - CONGESTION, RUNNY NOSE
 - FATIGUE, HEADACHE, BODY ACHES
 - NAUSEA OR VOMITING
- (Do not report to your assignment if you are sick)*

- PERSONNEL WHO DEVELOP FLU-LIKE SYMPTOMS SHALL:**
- NOTIFY THEIR IMMEDIATE SUPERVISOR
 - REPORT TO THE MEDICAL UNIT FOR EVALUATION

- MEDICAL UNIT WILL:**
- EVALUATE PERSONNEL / MAKE RECOMMENDATIONS
 - TRACK PERSONNEL FOR THE INCIDENT - CONTACT-TRACING
 - MAKE NECESSARY TEAM & FOREST NOTIFICATIONS

- PERSONNEL EXPERIENCING FLU-LIKE SYMPTOMS SHALL BE TESTED:**
- SEEK MEDICAL CARE FOR FURTHER TESTING (TESTING SITES PROVIDED BY THE MEDL)
 - AFTER TESTING IS COMPLETE, PERSONNEL MAY HAVE TO QUARANTINE WHILE AWAITING RESULTS

- IF COVID-POSITIVE:**
- PERSONNEL SHALL ISOLATE AT APPROVED LOCATION UNTIL DEMOB'D (LOCATION PROVIDED BY THE MEDL)

- IF NEGATIVE:**
- FOLLOW AGENCY SPECIFIC GUIDELINES
 - OR, PER CDC, NO FURTHER ACTION REQUIRED

- SUPERVISOR SHOULD:**
- MAKE NOTIFICATIONS TO HOME UNIT
 - BEGIN AGENCY WORK-COMP PROCESS
 - COMPLETE DEMOB PROCESS

PERSONNEL: CONTINUE TO SELF -MONITOR
(Do not report to your assignment if you are sick) IF PERSONNEL IS TOO SICK, NOTIFY SUPERVISOR

IMT WILL PROVIDE DIRECTION AND SUPPORT UNTIL RECEIVED BY THE HOME UNIT

TEAM 15—MEDICAL UNIT WILL TRACK AND MONITOR ALL COVID RELATED EXPOSURES



IN-CAMP ISOLATION FLOWCHART:

- IN-CAMP GUIDELINES AS FOLLOWS:**
- PERSONNEL SHALL ISOLATE AT APPROVED LOCATION ONCE EVALUATED BY MEDICAL STAFF
 - MEDICAL UNIT WILL MONITOR PERSONNEL UNTIL DEMOBILIZED FROM THE INCIDENT

SHOULD PERSONNEL'S HEALTH STATUS DETERIORATE, CONTACT THE MEDICAL UNIT ASAP

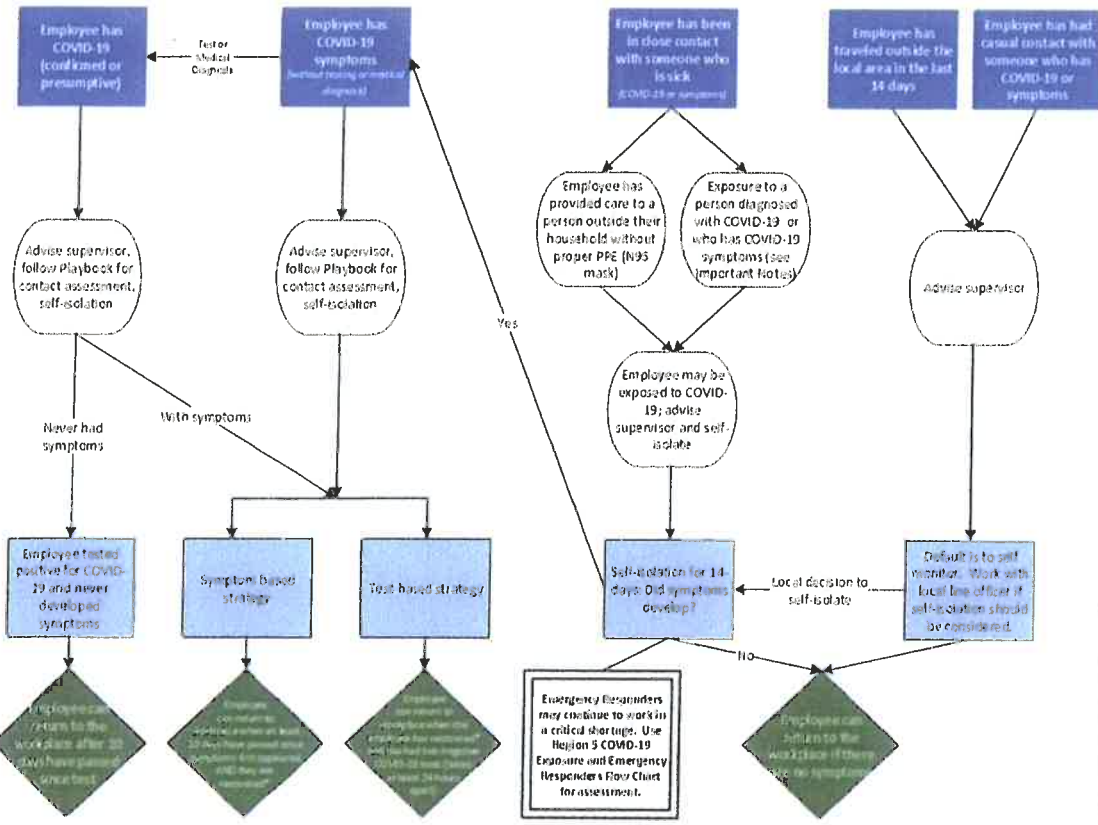
- MEDICAL UNIT SHALL:**
- CONTACT COMMUNICATIONS - ARRANGE FOR TRANSPORTATION TO HOSPITAL IF NEEDED
 - CALL THE IMMEDIATE SUPERVISOR
 - MAKE NECESSARY TEAM & FOREST NOTIFICATIONS

FEDERAL EMPLOYEES SHALL REFER TO REGION 5 — COVID-19 ACTION PROCESS FOR AGENCY SPECIFIC GUIDANCE



Region 5 Pacific Southwest Region COVID-19 Response Action Process August 20, 2020

COVID-19 Response and Employee Notification



Important Notes:

- * Recovered is defined as 10 days since symptoms first appeared AND 24 hours with no fever without the use of fever-reducing medicines AND other symptoms of COVID-19 are improving.
- Symptoms of COVID-19 include cough, shortness of breath, trouble breathing, fever, chills, repeated shaking with chills, muscle or body aches, headache, sore throat, new loss of taste or smell, congestion or runny nose, nausea or vomiting, or diarrhea.
- Contact Assessment should be conducted to help determine potential exposure of additional employees; conduct assessment for the 2-day period before illness onset or test date of sick employees, whichever came first.
- Close contact is defined as less than 6 feet, for at least 15 minutes with or without face coverings/masks. Casual contact is defined as less than 6 feet for less than 15 minutes or more than 6 feet for more than 15 minutes.
- Any employee in "close contact with someone who is sick" may return to the workplace if the sick person is tested for COVID-19 and the test is negative.
- Contact with exposed individuals is classified as secondary contact and does not typically require self-isolation unless the exposed individual tests positive.
- You do not need to self-isolate unless you meet one of the criteria identified.
- Always follow the advice of a medical provider, if given, including any need for isolation or clearance for return-to-duty.

This document is subject to change based on CDC guidance.

LOGISTICS INFORMATION

KING CITY ICP

PACIFIC VALLEY

Ordering		0600-2200
Ground Support		0500-2200
Showers		0600-1100 1400-2200
Meals	B	0600-0900
	L	0600-2100
	D	1800-2100
Laundry		0600-2200
Fuel - local gas stations or see Ground Support for special needs		
Communications		0600-2200
Dispatch		24 hours

Showers	0500-1200 1400-2200
Fuel	0600-2130
Laundry Drop Off/Pickup	0600-1000 1800-2200

MISSION SPIKE

Saw Shop	0630-2100
Fuel	0600-2200

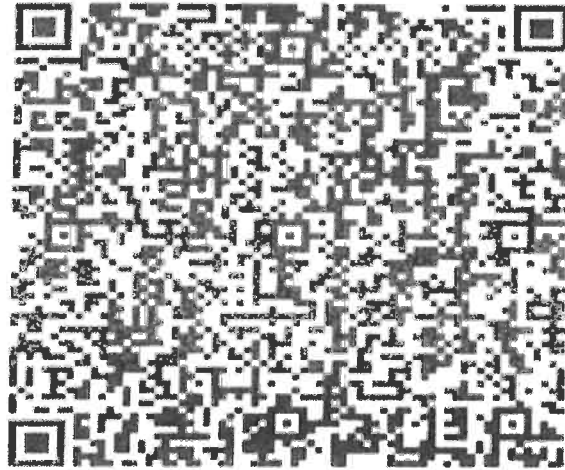
We need your help!!!

Ground Support needs to locate the following rental vehicles that have been checked out. If you have one of the following vehicles, please stop by and see us or call 805-833-1106.

**E-242 E-243 E-244 E-245 E-344 E-346 E-382 E-383
E-402 E-403 E-405 E-505 E-506 E-507 E-508**

Utilize Collector App or Avenza and mark all accountable property (pumps, hose, tanks,...), attach a picture of the serial number with the LAT and LONG.

Virtual Times



Step 1: TAKE PICTURE OF YOUR CTR/SHIFT TICKETS !!

Step 2: UPLOAD PDF/PICTURE (JPG)

Step 3: Please add in the SUBJECT LINE your RESOURCE

**NUMBER and LAST NAME/CREW NAME. EXAMPLE: O12.34 SMITH / C123
CREW NAME**

Step 4: SEND EMAIL

OR Email TO:

2020.Dolan.Finance@firenet.gov

Need to talk to Finance:

Dolan Finance Phone: 323-394-8817



2020.dolan@firenet.gov
Fire Information: 831-272-0222

Join the **Dolan Fire** morning briefings
Facebook Live, 7:00am on the
Los Padres National Forest
Facebook page
Use QR code below



TRAINING SPECIALIST MESSAGE

The Dolan Training link Is Up and Running

***Use the QR code found on the front of the IAP
Find the Training Folder and you can register.***

***If you need training forms, evaluations or
position task book help,
Ready to Close Out***

***You can contact the TNSP Jesse Roach at
(530) 966-3459 for training related questions.***

*Jesse Roach
Training Specialist*

TENTATIVE RELEASE
Dolan Fire CA-LPF-002428

9/26/20

CREWS:

C-102	0600	(HC2)	SUNDOWNERS
C-67	0700	(CAMP)	CCLA3

EQUIPMENT:

E-377	0930	(PU)	TRANSPORTATION - PICKUP
-------	------	------	-------------------------

OVERHEAD:

O-444.22	0700	(LSC3)	KINNE, MICHAEL
O-602	0730	(EMTF)	ANTES, DOMINIC
O-752	0730	(REAF)	FIELDS, CAROL
O-711	0730	(SECM)	SMITH, TYLER
O-778	0800	(SEC2)	BUCKLEW, RICHARD
O-817	0900	(AADM)	DOWLING, CHRISTOPHER
O-830	1800	(ICT3)	GERWE, MARK

9/27/20

CREWS:

C-98	0700	(HC2)	SANTA LUCIA
------	------	-------	-------------

OVERHEAD:

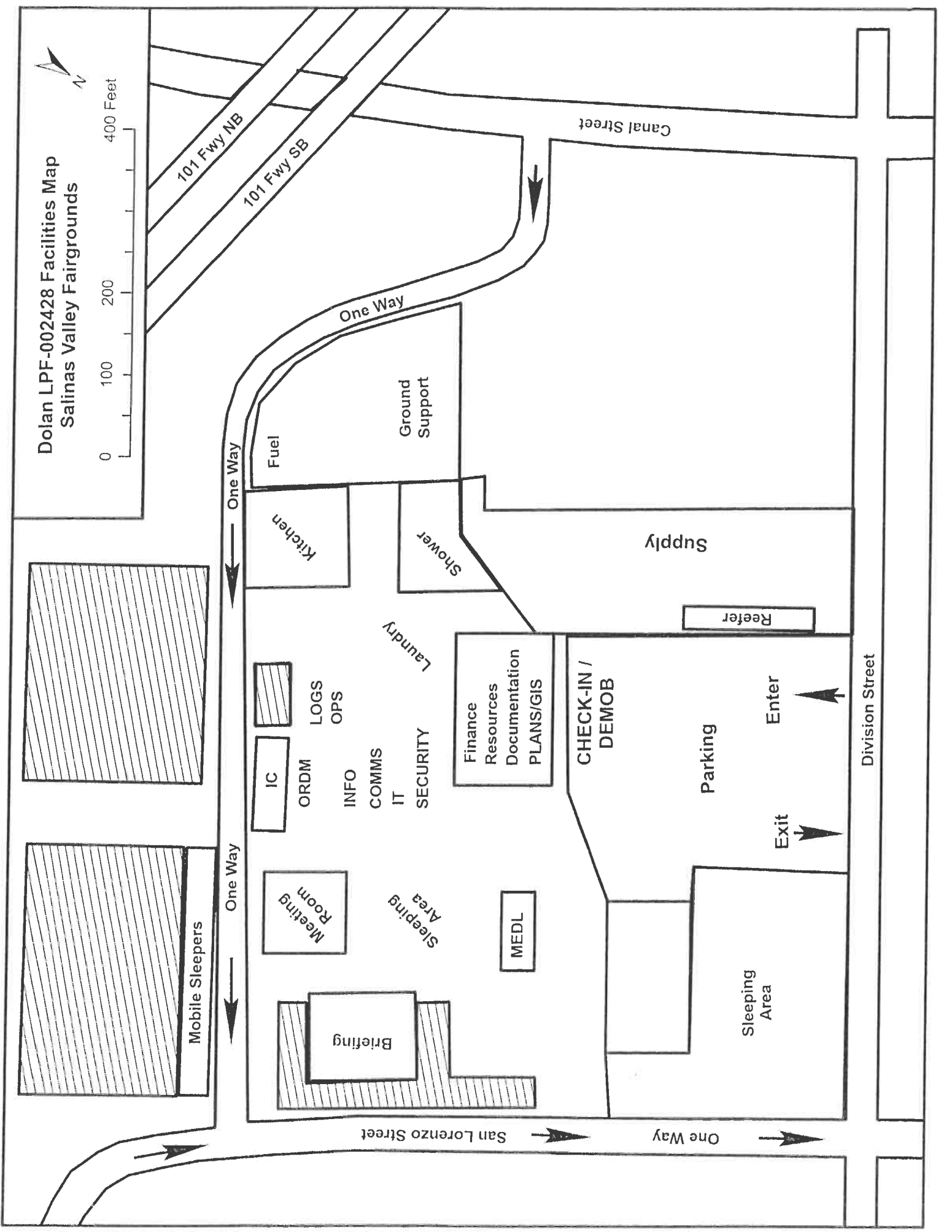
O-603	0700	(RCDM)	DUNCAN, DAVID
O-569	0700	(SOF2)	HADE, DAVID
O-792	0700	(DIVS)	PERREAULT, KENN
O-769	0730	(EQPM)	ARCHER, BRIAN
O-821	0800	(DRIV)	CROSS, DIANE
O-842	0800	(HEQB)	EROSKY, SHANE
O-835	0800	(PIO2)	KERN, KASSIDY
O-877	0800	(THSP)	SELI, JUSTIN

IF YOU NEED A FLIGHT, CALL DEMOB AT **925-499-5889** OR RESOURCES AT **925-499-5909** WITH YOUR INFORMATION AT **LEAST 72 HOURS IN ADVANCE** SO WE CAN WORK ON YOUR FLIGHT ARRANGMENTS.

If you develop Covid Symptoms and Test Positive for Covid 19 with 14 days after DEMOB, please notify:

Karina Gutierrez, USFS
928-227-7732
Karina.gutierrez@usda.gov

Dolan LPF-002428 Facilities Map
Salinas Valley Fairgrounds



ACTIVITY LOG (ICS 214)

1. Incident Name:

Dolan Fire

2. Operational Period: Date From: 9-26-2020

Date To: 9-27-2020

Time From: 0700

Time To: 0700

7. Activity Log (continuation):

Date/Time

Notable Activities

8. Prepared by: Name: _____

Position/Title: _____

Signature: _____

ACTIVITY LOG (ICS 214)

1. Incident Name: Dolan Fire	2. Operational Period: Date From: 9-26-2020 Date To: 9-27-2020 Time From: 0700 Time To: 0700	
3. Name:	4. ICS Position:	5. Home Agency (and Unit):
6. Resources Assigned:		
Name	ICS Position	Home Agency (and Unit)
7. Activity Log:		
Date/Time	Notable Activities	
8. Prepared by: Name: _____	Position/Title: _____	Signature: _____
ICS 214, Page 1	Date/Time: _____	