

Sunday

INCIDENT ACTION PLAN

DOLAN

CA-LPF-002428

P5NF6M (0507)



OPERATIONAL PERIOD

9/27/2020 0700

to

9/28/2020 0700

This page intentionally left blank



INCIDENT OBJECTIVES (ICS 202)

1. Incident Name: <p style="text-align: center;">Dolan</p>	2. Operational Period:	Date From: 9/27/2020	Date To: 9/28/2020
		Time From: 0700	Time To: 0700

3. Objective(s):

STRATEGIC FRAMEWORK

Implement a full suppression strategy on the Dolan Fire. Values at risk include human safety, private property, National Scenic Byway (Highway 1), Fort Hunter Liggett improvements, and wilderness values. Apply tactics that offer the highest probability of success. Identify, develop and prepare contingency measures in a proactive fashion. Develop and maintain an accurate and timely information sharing process for high value vineyard operations.

- MANAGEMENT OBJECTIVES
- Provide for firefighter and public safety through hazard recognition and risk management.
 - Reduce the threat to private property, residences, and infrastructure through effective suppression tactics.
 - Minimize risk and limit exposure to COVID-19 by following best management practices.
 - Reduce the impacts to Wilderness values by applying minimum impact suppression tactics (MIST).
 - Coordinate with assigned incident resource advisors to minimize impacts on natural and cultural resources.
 - Distribute accurate and timely fire information to cooperators, the public, and stakeholders.
 - Manage resources to meet protection objectives while maintaining fiscal accountability.

- CONTROL OBJECTIVES
- Minimize risk to private property, surrounding communities, and resource values by:
- Maintaining the fire within the existing perimeter along the Highway 1 corridor;
 - Keeping the fire south of the Marble Peak Trail (Willow Creek) from Anderson Peak to Arroyo Seco and south of the 19S09 Road (Arroyo Seco River);
 - Keeping the fire west of the 19S01 Road (Vaqueros River) and the 19S08 (Reliz River) Road; and
 - Keeping the fire north of the line from Highway 1, Prewitt Ridge to the Mckern Road and Nacimiento–Ferguson Road to Del Venturi and Milpitas Heights Road.

5. Site Safety Plan Required? Yes No

Approved Site Safety Plan(s) Located at:

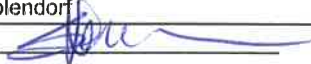
6. Incident Action Plan

<input checked="" type="checkbox"/> ICS 203	<input checked="" type="checkbox"/> Safety Message	<input checked="" type="checkbox"/> Finance Message	<input checked="" type="checkbox"/> DMOB List
<input checked="" type="checkbox"/> WX	<input checked="" type="checkbox"/> ICS 215a	<input checked="" type="checkbox"/> Information	<input type="checkbox"/> Phone List
<input checked="" type="checkbox"/> Fire Behavior	<input checked="" type="checkbox"/> ICS 205	<input type="checkbox"/> READ	<input type="checkbox"/> Travel Map
<input checked="" type="checkbox"/> ICS 204	<input checked="" type="checkbox"/> ICS 206	<input type="checkbox"/> HR	<input checked="" type="checkbox"/> Base Map
<input checked="" type="checkbox"/> ICS 220	<input checked="" type="checkbox"/> COVID/ Logs	<input checked="" type="checkbox"/> Training	<input checked="" type="checkbox"/> ICS 214

7. Prepared By: Steve Anderson Position/Title: PSC Signature:

8. Approved by Incident Commander: Jimmy Harris, Jon Lucas (T) Signature:

ORGANIZATION ASSIGNMENT LIST (ICS 203)

1. Incident Name: Dolan		2. Operational Period: Date From: 9/27/2020 Time From: 0700		Date To: 9/28/2020 Time To: 0700	
3. Incident Commander(s) and Command Staff:			7. Operation Section:		
IC/UC's	Jimmy Harris, Jon Lucas (T)		Operations	Stephen Fillmore	
Deputy	Tom Clemo		Planning Ops	Mark Smith, Scott Grasmick (T)	
Safety Officer	Rick Bertram, Tom Zeulner		Day Ops	Mike Milkovitch, Scott Cones (T)	
Information Officer	Tom Stokesberry, Lisa Walker (T), Deborah Carlisi (T)		Night Ops	Stephen Fillmore, Joe Tieso (T)	
Liaison Officer	Bob Neumann, Ray Cablayan, Diane Cross, Jeff Jones (V)		Branch		
4. Agency/Organization Representatives:			Division/Group	F/K	Unstaffed
Agency/Organization	Name		Division/Group	A/Z	Jeff Goyings
Los Padres AREP	Chris Dowling, Jeremy Marshal, Tony Martinez		Division/Group	Y/X	Corey Stowe
Big Sur Fire Dep.	Matt Harris		Division/Group	W/S/R	Erick D'Amico
Fort Hunter Liggett	Jeff Manetti		Division/Group	O/P	Dan O'Connor
Monterey Sheriff	Maoiriano		Division/Group	M	Chris Linane, Patrick Blair (T)
CHP	M. Olta, J. Yerace		Division/Group	Night	Jason Westholter
CA OES	Steve Sjotvedt		Division/Group		
CA State Parks	M. A. Khalar		Division/Group		
PG&E	G. Money		Branch		
			Division/Group		
			Division/Group		
			Division/Group		
			Division/Group		
			Division/Group		
			Division/Group		
			Division/Group		
			Division/Group		
			Branch		
			Division/Group		
5. Planning Section:			Division/Group		
Chief	Steve Anderson		Division/Group		
Deputy			Division/Group		
Resource Unit	Greg White		Division/Group		
Situation Unit	Christina Barba, Mike Held, Mike Callahan (T)		Branch		
Documentation Unit	Michael Belmonte (T)		Division/Group		
Demobilization Unit	Tim Sandstrom (T), Josh Clark (T)		Division/Group		
GISS	Maryln Porter, Greg Elwood, Erin Opliger (T)		Division/Group		
FBAN	Nick Elmquist		Division/Group		
IMET	Royce Fontenot, Kurt VanSpeybrock		Division/Group		
Training Tech Spec	Jesse Roach (V)		Air Operations Branch		Director: John Crotty
ITSS	Marty Cohn, Victor Taus		Air Support Group Supervisor	Eric Verdries, Seth Larson (T)	
Lead READ	Kyle Kinports		Air Tactical Group Supervisor	Tony Duprey	
6. Logistics Section			Tusi Helibase Manager		John Kaisersatt, Dustin Grise (T)
Chief	Mike Beeman, Tom Crakes		Secco Helitorch Base		Matt Carter
Supply Unit	John Harkleroad, Trish Dutrey		8. Finance/Administration Section:		
Facilities Unit	Mike Farmer, Tim Murdoch, Alan Johnson		Chief	AnnMarie Carlson	
Ground Support Unit	John Badaracco		Procurement Unit		
Communications Unit	David Paschke, Rick Smith, Jeff Davis (T)		Comp/Claims Unit		
Medical Unit	Robert Ethridge		Cost Unit	Lee Piper	
Food Unit	Snow Talifero (T), Tim Murdoch (T)		Personnel Time	Pam Killingsworth	
COVID	Jim Emerson		Equipment Time	Amanda Folendorf	
Prepared By: Name:	Steve Anderson	Position/Title:	PSC	Signature:	
ICS 203		Date/Time:	9/26/2020 2300 hours		



Fire Weather Forecast

SUNDAY, SEPTEMBER 27 2020



FORECAST NO: 36
PREDICTION FOR: Sunday
SHIFT DATE: September 27, 2020
ISSUED: 2000 Saturday, Sept 26, 2020

NAME OF FIRE:
UNIT:
Incident Meteorologist:

Dolan
USFS/LPNF
Royce Fontenot /s/
(240) 499-6642

DISCUSSION: Conditions will continue to be hot and dry over the fire today with highs reaching the upper 90's over lower to mid-elevations and the upper 80's in the higher terrain. Humidity values will drop into the mid-teens over most of the fire under clear skies. Winds will begin to shift more to the east and southeast over interior areas of the fire with the gustiest conditions along the higher terrain. Overnight on Sunday, humidity recoveries will be poor to fair in the higher elevations with moderate to good recoveries in the mid to lower elevations. Monday will see warmer conditions with continued humidities in the teens.

SUNDAY:

- WEATHER: Clear.
- WIND (20 FT):

Coast:	Onshore 4-6 mph.
Inland:	NE 3-5 mph becoming E-NE 5-8 mph by 1300. Gust to 15 mph along high ridges. Div W: Terrain driven 3-6 becoming E-SE 4-7 mph gust to 15 mph after 1200.
Arroyo Seco:	Terrain driven 2-4 mph then up-valley 5-7 mph by 1200. Gusts to 13 mph After 1400.
- MAX TEMPERATURES: Highs 64-68 near the coast. 92-98 inland and Arroyo Seco. 85-89 above 2000 feet MSL
- MIN RH: 55-65% near the coast. 14-20% inland.
- INVERSION LIFT/MIXING HEIGHT: 0900 hrs/5000 feet MSL
- TRANSPORT WINDS: S 5 mph
- MARINE LAYER: None

SUNDAY NIGHT:


- WEATHER: Clear
- WIND (20 FT): Terrain driven 4-6 mph.
- MIN TEMPERATURES: 55-60 near the coast, 50-55 inland and Arroyo Seco, 65-70 above 1500 feet MSL.
- MIN RH: 70-80% near the coast and Arroyo Seco. 50-70% lower inland areas, 20-30% higher terrain.
- INVERSION: 2000 feet MSL / Strong
- TRANSPORT WINDS: E 6 mph
- MARINE LAYER: 200 FT coastal branch

MONDAY:

- WEATHER: Clear.
- WIND (20 FT):

Coast:	Onshore 4-6 mph.
Inland:	Terrain driven 3-6 mph becoming E-SE 6-9 mph by 1200. Gust to 15 mph along high ridges.
Arroyo Seco:	Terrain driven 2-4 mph then up-valley 5-7 mph by 1200. Gusts to 13 mph After 1400.
- MAX TEMPERATURES: Highs 66-70 near the coast. 93-99 inland and Arroyo Seco. 85-90 above 2000 feet MSL
- MIN RH: 50-60% near the coast. 14-19% inland.
- INVERSION LIFT/MIXING HEIGHT: 0900 hrs/10000 feet MSL
- TRANSPORT WINDS: SE 9 mph
- MARINE LAYER: None

FIRE BEHAVIOR FORECAST

FORECAST NUMBER: 37	TYPE OF FIRE: Wildfire
FIRE NAME: Dolan	OPERATIONAL PERIOD: Sept. 27, 2020 24hr
DATE ISSUED: Sept. 26, 2020	TIME ISSUED: 1900 hours
UNIT: CA-LPF	SIGNED: 
	Typed/printed: Nic Elmquist, FBAN

Weather Summary

Please see attached Fire Weather Forecast

High Temps: 92^o-98^o (inland), 64^o-68^o (coast) Min RH's: 14-21% (inland), 55-65%(coast)
Winds: Terrain driven 2-4 mph becoming NE 5-7 mph by 1200. Gust to 13 mph along ridges.

FIRE BEHAVIOR

GENERAL:

September 27th is a day with fire history on the Monterey RD. The Buckeye fire which burned 32,360 ac. near Buckeye CG in the Silver Peak Wilderness, south of Div. W, started this day. As did the 17,224 ac. Chalk fire, near Chalk Peak east of Div. Y, in 2008. Red Flag Warnings are hoisted for much of the north part of the state and fire weather watches are issued in the south. Although the forecasted wind speeds around the fire area do not exceed these thresholds, conditions exist to sustain rapid rates of spread. Expect high resistance to control if a fire were to get established outside the fire perimeter or a new wildfire were to ignite. Stay vigilant.

Probability of ignition peak burn period (1200-1600): 90% Burning Index: Yesterday: 79, Today: 101

Local Thresholds: Combinations of any of these factors can lead to greatly increased fire behavior: **20' windspeed over 7 mph, relative humidity <17%, temperature over 98, 10-Hour Fuel Moisture less than 6.**

SPECIFIC:

Branch I: Any heat left near a receptive fuel bed will likely show itself in the coming days. Heat continues to be found within dozer berms. These berms can smolder for weeks until they are broken up by rehab resources.

Branch IV: The upper elevations were wind tested with reports of 30+ mph winds along the ridge system in Div. M. It is a good sign no additional signs of heat were identified yesterday. Pay particular attention to any of the perimeter that has been holding in drainages, especially if it has not been worked by crews due to terrain. There is local history of fires coming out of drainages which have been holding for extended periods of time.

Initial Attack: Critical fire conditions will exist for most of the state the next several operational periods. These conditions will include minimal overnight recoveries. Expect rapid rates of spread during the day and night on any new fires.

AIR OPERATIONS:

There should not be any factors impacting aerial operations today.

SAFETY

Fuels in Southern California are at critically dry levels. See attached Fuels and Fire Behavior Advisory. Fire danger indices are going to be >90% percent for the next several days. Stick to the basics and ensure L.C.E.S.

****Continue to communicate your weather observations.**

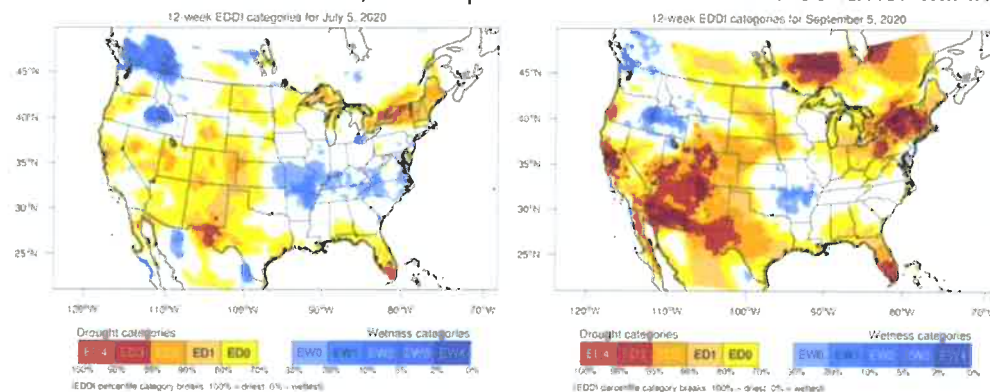
Fuels and Fire Behavior Advisory

Southern California Geographic Area

Subject: Live and dead fuels are extremely dry across the mountain predictive service areas (PSAs). Extreme fire behavior and rapid rates of spread are occurring in these areas, even when winds are light. The chance for extreme fire behavior will increase over the next couple of months as winds increase and become more prevalent. Fire behavior will remain elevated across the mountains of southern and central California, until significant rainfall occurs.

Discussion: A progressive pattern brought near to slightly below normal temperatures from June through August 11th and fire activity was below normal. High pressure became strong and dominant from August 12th into September, bringing well above normal temperatures and very low humidities. Live and dead fuel moisture over the mountains are much lower than normal, due to the absence of monsoonal showers and thunderstorms, combined with very warm and dry conditions.

Difference from normal conditions: Rainfall was 50% to 70% of normal this year in the Sierras, while the rest of the mountainous areas in Southern California received slightly above normal rainfall. Due to hot and dry conditions and little to no rainfall this summer, the dead fuel moistures across all mountain areas are near or below the 3rd percentile and live fuel moistures are between 50% and 70%. ERC's are running near or above the 97th percentile. Computer models indicate high pressure will dominate through at least the end of October, so the potential for extreme fire behavior will increase.



The Evaporative Demand Drought Index (EDDI) is an experimental drought monitoring and early warning guidance tool. It examines how anomalous the atmospheric evaporative demand (E_0 ; also known as "the thirst of the atmosphere") is for a given location and across a time period of interest. The figures show the 12 week period preceding July 5 (left) and Sep 5 (right).
<https://psl.noaa.gov/eddi/>

Concerns to Firefighters and the Public:

- Firefighters need to be prepared for possible extreme fire behavior and dangerous rates of spread at any time of day, especially during foehn wind events.
- The potential for extreme fire activity will be likely to continue until enough precipitation occurs to significantly increase fuel moisture.
- Rapid rates of spread could have a significant impact on public safety and make evacuations difficult.

Mitigation Measures:

- All firefighters need to remain aware of current and expected weather and burning conditions.
- Employ LCES principles (Lookouts, Communications, Escape Routes, Safety Zones).
- Review current fire potential products from Predictive Services at:
<https://gacc.nifc.gov/oscc/predictive/weather/index.htm>,
- Red Flag conditions from the National Weather Service and weather at:
<https://www.wrh.noaa.gov/fire2/cafw/>.
- Monitor the Santa Ana Wildfire Threat index during the season at:
<https://fsapps.nwcg.gov/psp/sawti>

Area of Concern: The mountains are the driest area in the region and are the main concern heading forward. The associated PSAs are SC01, SC02, SC03, SC09, SC10, and SC11.

ASSIGNMENT LIST (ICS 204 WF)

CONTROLLED UNCLASSIFIED
INFORMATION//BASIC

1. Incident Name:	2. Operational Period:	3. Branch	Division
Dolan	Date From: 09/27/20 Date To: 09/28/20 Time From: 0700 Time To: 0700	A/Z	A/Z
4. Operations Personnel:		Page 1 of 1	Alpha/Zulu

Operations Section Chief: Stephen Fillmore	Day Ops: Mike Milkovitch, Scott Cones (T)
Branch Director:	Branch Safety:
Division/Group Supervisor: Jeff Goyings	Air Attack: Tony Duprey

5. Resources Assigned:	***Resouces in BOLD are identified as IA resources***						
Resource Identifier	ALS	LWD	Leader	Personnel	Request #	Hours	Reporting Location
STC OES OES 6828C (crw swp 9/27)	X	10/11	DAVID PEREZ	22	E-323	0700-1900	PACIFIC VALLEY
CULS ZAVALLA		9/30	ZAVALLA, JOSEPH	1	O-906	0700-1900	PACIFIC VALLEY
ARCH GARRETT		10/5	GARRETT, MARK	1	O-953	0700-1900	PACIFIC VALLEY
ENG3 CULS E801 ***READ RESOURCE***		10/6	RICHARD GARCIA	5	E-526	0700-1900	PACIFIC VALLEY

6. Work Assignments:
 TASK: Patrol and extinguish (where possible) any heat or threat along containment lines or around structures.
 PURPOSE: Keep fire within existing containment lines providing for public safety.
 END STATE: Highway 1 corridor and associated communities protected.
 RISK ASSESSMENT: Stay alert for drivers sightseeing the fire area and in restricted areas. Watch for rollout onto roads and flare ups above the roadway

7. Special Instructions:
 -All medical resources MUST check in with Dolan Communications once in place, see medical plan for REMS availability.
 -Ambulances will be located on paved roads for patient transport only.
 -READs will check in and out with Division.
 -Assume all divisions have Sudden Oak Death Pathogen and clean and disinfect everything. **No weed wash is available use a commerical wash station where sump collection is done to prevent the further spread.**
 -For Mop up and Patrol – Do not go off the road (UXO).
 -Utilize Collector App or Avenza and mark all accountable property (pumps, hose, tanks,...), attach a picture of the serial number with the LAT and LONG.

8. Communications

Name	Ch	Function	Rx Freq	Rx Tone	Tx Freq	Tx Tone	Notes
CMD 1	1	COMMAND	170.9750	110.9	168.7000	110.9	C1 ANDERSON PEAK NORTHERN DIV A
CMD 3	3	COMMAND	172.0750	110.9	162.2000	110.9	C47 CONE PEAK SOUTHERN DIV A, Z
TAC 2	8	TACTICAL	168.6000	110.9	168.6000	110.9	NIFC T3
A/G TAC	14	A/G TACTICAL	163.1500		163.1500		
CALCORD	15	MEDEVAC A/G	156.0750	156.7	156.0750	156.7	MEDICAL EVAC EMERGENC
GUARD 18	16	AIRGUARD	168.6250		168.6250	110.9	EMERGENCIES ONLY

9. Prepared by: Name: Greg White **RESL**
 Signature:
 Date/Time: 9/26/2020 2200 Personnel Count: 29

ASSIGNMENT LIST (ICS 204 WF)

CONTROLLED UNCLASSIFIED
INFORMATION//BASIC

1. Incident Name: <p style="text-align: center; font-weight: bold;">Dolan</p>	2. Operational Period: Date From: 09/27/20 Date To: 09/28/20 Time From: 0700 Time To: 0700	3. Branch Division <p style="text-align: center; font-weight: bold; font-size: 1.2em;">W/S/R</p>
---	---	---

4. Operations Personnel:		Page 1 of 1
Operations Section Chief: Stephen Fillmore	Day Ops: Mike Milkovitch, Scott Cones (T)	
Branch Director: Chris Linane, Patrick Blair (T)	Branch Safety:	
Division/Group Supervisor: Erick D'Amico	Air Attack: Tony Duprey	

Resources in BOLD are identified as IA resources							
Resource Identifier	ALS	LWD	Leader	Personnel	Request #	Hours	Reporting Location
CRW2IA VENTANA		10/2	HAROLD COOK	19	C-71	0700-1900	MISSION SPIKE
ENG3 CA-FHL E8833		10/6	GARDNER, CLAYTON	5	E-455	0700-1900	MISSION SPIKE
ENG3 AZ-CEA ENG 66		10/5	KOONCE, MIKE	4	E-410	0700-1900	MISSION SPIKE
ENG3 CAMINOS FIRE AZ-TDC		9/28	ROADS, JOHN	3	E-409	0700-1900	MISSION SPIKE
ENG3 IN NPS E-5673		10/6	RAMIREZ, BRANDON	5	E-143	0700-1900	MISSION SPIKE
ENG3 LPF-E315		10/3	NICK VALENTIN	5	E-22	0700-1900	MISSION SPIKE
PCT2 ABLE SERVS D6R		10/4	KRISTEN SHERRI	2	E-369	0700-1900	MISSION SPIKE
WTS1 - NORTHSTATE #348		10/2	BAKER, KIMBER	1	E-231	0700-1900	MISSION SPIKE
TFLD GOTTBHEUT		9/30	GOTTBHEUT, CHAD	1	O-891	0700-1900	MISSION SPIKE
TFLD (T) SCHWANTES		9/30	SCHWANTES, JOSEPH	1	O-893	0700-1900	MISSION SPIKE
HEQB SHIFFRAR		10/3	SHIFFRAR, MICHAEL	1	O-1098	0700-1900	MISSION SPIKE
HEQB (T) DAHLBERG		10/8	DAHLBERG, DAVID	1	O-1068	0700-1900	MISSION SPIKE
SOF1 BENEDICT (DIV W)		9/27	BENEDICT, TIM	1	O-346	0700-1900	MISSION SPIKE
SOFR (T) DUNN (DIV W)		10/1	DUNN, THOMAS	1	O-840	0700-1900	MISSION SPIKE
EMTF BAILEY		10/4	BAILEY, GAGE	1	O-940	0700-1900	MISSION SPIKE
EMTF HASSLINGER		9/30	HASSLINGER, JOHN	1	O-901	0700-1900	MISSION SPIKE

6. Work Assignments:
 TASK: Establish containment line, patrol and extinguish (where possible) any heat or threat along the fire perimeter. Identify potential medical hoist or evacuation locations for air operations approval.
 PURPOSE: Keep fire within existing containment lines providing for public safety.
 END STATE: Community and Fort Hunter Liggett protected.
 RISK ASSESSMENT: Watch for ash pits when mopping up and be alert for vehicle traffic.

7. Special Instructions:
 -All medical resources MUST check in with Dolan Communications once in place, see medical plan for REMS availability.
 -Ambulances will be located on paved roads for patient transport only.
 -READs will check in and out with Division.
 -Assume all divisions have Sudden Oak Death Pathogen and clean and disinfect everything. **No weed wash is available use a commercial wash station where sump collection is done to prevent the further spread.**
 -For Mop up and Patrol – Do not go off the road (UXO).
 -Utilize Collector App or Avenza and mark all accountable property (pumps, hose, tanks,...), attach a picture of the serial number with the LAT and LONG.

8. Communications

Name	Ch	Function	Rx Freq	Rx Tone	Tx Freq	Tx Tone	Notes
CMD 2	2	COMMAND	173.0250	110.9	165.3875	110.9	C41 JUNIPERO SERRA PEAK
TAC 4	10	TACTICAL	166.7750	110.9	166.7750	110.9	NIFC T6
A/G TAC	14	A/G TACTICAL	163.1500		163.1500		
CALCORD	15	MEDEVAC A/G	156.0750	156.7	156.0750	156.7	MEDICAL EVAC EMERGENCY
GUARD 18	16	AIRGUARD	168.6250		168.6250	110.9	EMERGENCIES ONLY

9. Prepared by: Name: Greg White **RESL** Signature:

ICS 204 Date/Time: 9/26/2020 2200 Personnel Count: 52

ASSIGNMENT LIST (ICS 204 WF)

CONTROLLED UNCLASSIFIED
INFORMATION/BASIC

1. Incident Name: <p style="text-align: center;">Dolan</p>	2. Operational Period: Date From: 09/27/20 Date To: 09/28/20 Time From: 0700 Time To: 0700	3. Branch Division <p style="text-align: center; font-size: 1.2em;">O/P</p>
--	---	--

4. Operations Personnel:	Page 1 of 1 Oscar/Papa
---------------------------------	-----------------------------

Operations Section Chief: Stephen Fillmore Branch Director: Division/Group Supervisor: Dan O'Connor	Day Ops: Mike Milkovitch, Scott Cones (T) Branch Safety: Air Attack: Tony Duprey
---	--

Resources in BOLD are identified as IA resources							
Resource Identifier	ALS	LWD	Leader	Personnel	Request #	Hours	Reporting Location
CRW2 DUST BUSTERS		10/6	URBAN, CHRIS	21	C-82	0700-1900	MISSION SPIKE
STC XSD 6430C	X	10/1	POST, SCOTT	22	E-330	0700-1900	MISSION SPIKE
SMOD MONTROSE		10/2	JOSEPH VAN NURDEN	4	O-749	0700-1900	MISSION SPIKE
CHIP TREE GUYS		10/8	JOHNIE MCCCELLAN	2	E-535	0700-1900	MISSION SPIKE
TFLD (T) MESERTH		9/28	MESERTH, MORGAN	1	O-834	0700-1900	MISSION SPIKE
SOF2 PLYMALE (DIV S/R/O/P)		10/5	PLYMALE, TOM	1	O-957.45	0700-1900	MISSION SPIKE
EMTF BOGLE		10/7	BOGLE, JEFF	1	O-1014	0700-1900	MISSION SPIKE
EMPF BOLLINGER		10/6	BOLLINGER, MATHEW	1	O-1013	0700-1900	MISSION SPIKE
REAF WAY		9/29	WAY, ANDREW F	1	O-887	0700-1900	MISSION SPIKE
ENG6 CULS BR802 ***READ RESOURCE***		10/6	LOREN MCDARMENT	4	E-527	0700-1900	MISSION SPIKE

6. Work Assignments:
 TASK: Utilize IR and UAS data to direct strategic suppression efforts and validate existing contingency lines. Identify potential medical hoist or evacuation locations for air operations approval.
 PURPOSE: To maintain the fire's current identified perimeter.
 END STATE: Threat of further growth is reduced and eliminated.
 RISK ASSESSMENT: Maintain LCES during line construction, watch for snakes and bees, stay hydrated, and ensure trigger points are in place during line construction.

7. Special Instructions:
 -All medical resources MUST check in with Dolan Communications once in place, see medical plan for REMS availability.
 -Ambulances will be located on paved roads for patient transport only.
 -READs will check in and out with Division.
 -Assume all divisions have Sudden Oak Death Pathogen and clean and disinfect everything. **No weed wash is available use a commercial wash station where sump collection is done to prevent the further spread.**
 -For Mop up and Patrol - Do not go off the road (UXO).
 -Utilize Collector App or Avenza and mark all accountable property (pumps, hose, tanks,...), attach a picture of the serial number with the LAT and LONG.

8. Communications							
Name	Ch	Function	Rx Freq	Rx Tone	Tx Freq	Tx Tone	Notes
CMD 6	6	COMMAND	170.0125	110.9	165.2500	110.9	C9 PINYON PEAK
TAC 3	9	TACTICAL	166.7250	110.9	166.7250	110.9	NIFC T5
A/G TAC	14	A/G TACTICAL	163.1500		163.1500		
CALCORD	15	MEDEVAC A/G	156.0750	156.7	156.0750	156.7	MEDICAL EVAC EMERGENC
GUARD 18	16	AIRGUARD	168.6250		168.6250	110.9	EMERGENCIES ONLY

9. Prepared by: Name: Greg White	RESL	Signature:
---	------	------------

ICS 204	Date/Time: 9/26/2020 2200	Personnel Count: 58
---------	------------------------------	---------------------

ASSIGNMENT LIST (ICS 204 WF)

CONTROLLED UNCLASSIFIED
INFORMATION//BASIC

1. Incident Name: <p style="text-align: center;">Dolan</p>	2. Operational Period: Date From: 09/27/20 Date To: 09/28/20 Time From: 0700 Time To: 0700	3. Branch Division <p style="text-align: center;">M</p>
--	---	--

4. Operations Personnel:		Page 1 of 1 Mike
Operations Section Chief: Stephen Fillmore	Day Ops: Mike Milkovitch, Scott Cones (T)	
Branch Director:	Branch Safety:	
Division/Group Supervisor: Chris Linane, Patrick Blair (T)	Air Attack: Tony Duprey	

Resources in BOLD are identified as IA resources							
5. Resources Assigned:	ALS	LWD	Leader	Personnel	Request #	Hours	Reporting Location
ENG3 ENGINE 319		10/2	KENNER, ANDREW	7	E-305	0700-1900	ARROYO SECO
ENG6 PATROL 1		10/7	GENE HICKS	2	E-157	0700-1900	ARROYO SECO

6. Work Assignments:
 TASK: Utilize IR and UAS data to direct strategic suppression efforts. Identify potential medical hoist or evacuation locations for air operations approval.
 PURPOSE: To provide community protection.
 END STATE: Fire stays within identified perimeter.
 RISK ASSESSMENT: Watch for increased fire activity, steep topography hazards and when constructing line ensure valid and early trigger points are in place.

7. Special Instructions:
 -All medical resources MUST check in with Dolan Communications once in place, see medical plan for REMS availability.
 -Ambulances will be located on paved roads for patient transport only.
 -READs will check in and out with Division.
 -Assume all divisions have Sudden Oak Death Pathogen and clean and disinfect everything. **No weed wash is available use a commercial wash station where sump collection is done to prevent the further spread.**
 -For Mop up and Patrol – Do not go off the road (UXO).
 -Utilize Collector App or Avenza and mark all accountable property (pumps, hose, tanks,...), attach a picture of the serial number with the LAT and LONG.

8. Communications

Name	Ch	Function	Rx Freq	Rx Tone	Tx Freq	Tx Tone	Notes
CMD 5	5	COMMAND	173.8250	110.9	165.3625	110.9	C34 CHEWS RIDGE
TAC 3	9	TACTICAL	166.7250	110.9	166.7250	110.9	NIFC T5
A/G TAC	14	A/G TACTICAL	163.1500		163.1500		
CALCORD	15	MEDEVAC A/G	156.0750	156.7	156.0750	156.7	MEDICAL EVAC EMERGENC
GUARD 18	16	AIRGUARD	168.6250		168.6250	110.9	EMERGENCIES ONLY

9. Prepared by: Name: Greg White	RESL	Signature:
ICS 204	Date/Time: 9/26/2020 2200	Personnel Count: 9

ASSIGNMENT LIST (ICS 204 WF)

CONTROLLED UNCLASSIFIED
INFORMATION/BASIC

1. Incident Name:	2. Operational Period:	3. Branch	Division
Dolan	Date From: 09/27/20 Date To: 09/28/20 Time From: 0700 Time To: 0700	Night	

4. Operations Personnel:		Page 1 of 1
Operations Section Chief: Stephen Fillmore	Night Ops: Stephen Fillmore, Joe Tieso (T)	
Branch Director:	Branch Safety:	
Division/Group Supervisor: Jason Westholter	Air Attack:	

5. Resources Assigned:	***Resources in BOLD are identified as IA resources***						
Resource Identifier	ALS	LWD	Leader	Personnel	Request #	Hours	Reporting Location
ENG3 CA-PRK 344		10/6	FLORENDO, JOHN	4	E-456	1900-0700	PACIFIC VALLEY

6. Work Assignments:
 TASK: Monitor, patrol and take action to prevent growth or spread as appropriate.
 PURPOSE: To provide community protection.
 END STATE: Fire stays within identified perimeter.
 RISK ASSESSMENT: Stay alert for drivers sightseeing the fire area and in restricted areas. Watch for rollout onto roads and flare ups above the roadway

7. Special Instructions:
 -All medical resources MUST check in with Dolan Communications once in place, see medical plan for REMS availability.
 -Ambulances will be located on paved roads for patient transport only.
 -READs will check in and out with Division.
 -Assume all divisions have Sudden Oak Death Pathogen and clean and disinfect everything. **No weed wash is available use a commercial wash station where sump collection is done to prevent the further spread.**
 -For Mop up and Patrol – Do not go off the road (UXO).
 -Utilize Collector App or Avenza and mark all accountable property (pumps, hose, tanks,...), attach a picture of the serial number with the LAT and LONG.

8. Communications

Name	Ch	Function	Rx Freq	Rx Tone	Tx Freq	Tx Tone	Notes
CMD 3	3	COMMAND	172.0750	110.9	162.2000	110.9	C47 CONE PEAK SOUTHERN DIV A, Z
TAC 2	8	TACTICAL	168.6000	110.9	168.6000	110.9	NIFC T3
A/G TAC	14	A/G TACTICAL	163.1500		163.1500		
CALCORD	15	MEDEVAC A/G	156.0750	156.7	156.0750	156.7	MEDICAL EVAC EMERGENC
GUARD 18	16	AIRGUARD	168.6250		168.6250	110.9	EMERGENCIES ONLY

9. Prepared by: Name: Greg White **RESL**

Signature:

ICS 204 Date/Time: 9/26/2020 2200 Personnel Count: 4

AIR OPERATIONS SUMMARY
DAY/NIGHT
ICS 220

Prepared By: John Crotty
 AOB

Prepared Date: 9/26/20

Prepared Time: 1800

1. INCIDENT NAME: Dolan Fire	2. OPS PERIOD DATE: 9/27/20	START TIME: 0700	END TIME: 2100	SUNRISE: 0657	SUNSET: 1853
------------------------------	-----------------------------	------------------	----------------	---------------	--------------

3. REMARKS (Safety Notes, Hazards, Air Operations Special Equipment, etc.): Track all dipsite locations/number of dips/gallons taken. Track all drop locations/number of drops/gallons dropped. All GPS data to be collected in DEGREES, MINUTES, DECIMAL MINUTES format. AVOID Aerial Application of Retardant/Foam/Agent within 300' of Waterways, Bodies of Water, etc if Retardant/Foam/Agent is dropped within these areas immediately notify the AOB and provide the following information: Lat/Long, estimated number of gallons and a map detailing the area. CAUTION Military Flight Routes CAUTION POWERLINES and SMOKE.	4. Helibase Information: Tusi Helibase: 35 59.687 121 14.202 Seco Helitorch Base: 36 13.820 121 27.930 Gruver MRB: 36 14.637 121 25.933	5. TFR's: Polygon Shape Altitude: 10,000' MSL NOTAMS: 0/7430 Frequency: 127.0250 http://tfr.faa.gov
---	---	---

6. PERSONNEL	NAME	PHONE #	7. FREQUENCIES	RX	7. TONE	TX	8. AM/FM	8. MEDIVAC SHIP INFORMATION Day: Night:
AOBD	John Crotty	805-440-6186	AIR TACTICS	164.6000		164.6000	FM	Name: CHP H70 Paso Robles Hoist
ASGS	Eric Verdries	805-455-5569	TFR Victor	127.0250		127.0250	AM	
ASGS (T)	Seth Larson	805-886-5850	Rotor Victor	121.0250		121.0250	AM	
Tusi Helibase	John Kaisersatt Dustin Grise (t)	805-878-4755 805-451-3193	Tusi Advisory	126.200		126.200	AM	Mercy Air 20 (FHL)
Seco Helitorch Base	Matt Carter	805-345-6940	A/G COMMAND	167.5500		167.5500	FM	
ATGS	Tony Duprey	805-450-2676	A/G TACTICAL	163.1500		163.1500	FM	Cal Star 5 Salinas
UASP UR31	Justin Baxter	928-713-9894	Deck	168.3500		168.3500	FM	
			Fire Service Net	171.5000		164.8250	AM	Santa Barbara H308 NVG/ALS Hoist
			CALCORD	156.0750	(T6)156.7	156.0750	FM	
			Air Guard	168.6250	(T1) 110.9	168.6250	FM	

HELICOPTERS

FAA N#	T	MAKE/ MODEL	BASE	STA RT	AVAIL	REMARKS	FAA N#	T	MAKE/MODEL	BASE	START	AVAIL	REMARKS
3CH	1	CH-47	Tusi	0700	0830	Bucket	528	2	Bell 212 HP	Tusi	0700	0830	EU
3RA	1	KMAX	Tusi	0700	0830	Bucket	7DP	3	Bell 407	Tusi	0700	0830	Recon/LL
							527	2	Bell 205++	SECO Torch Base	0700	0830	EU/Torch
							H-406	2	UH-1	Bear Valley			Day Hoist On Request

UAS / FIXED WING

AA-07		AC-690	KSMX	0730	0800								
UR31	3	M-600	Multi	0730	0830	IR/Map/PSD							

Missions:	Aircraft	AVAIL	Departure Point	Destination
Bucket Support	ALL	0830	Tusi/SECO	Fire
RECON	ALL	0830	Tusi/SECO	Fire
Retardant		0830	MRB	Fire
MEDIVAC		24 Hr.		As requested
Repeater			Tusi/Seco	As requested
Cargo	TBD	0830	Tusi/Seco	Fire
Initial Attack	TBD	0830	Tusi/SECO	TBD
Air Attack	0730	0800	KSMX	Fire
IR/Mapping	TBD	0830	TBD	TBD

Water dropping requested by Ops, Branch, Division or Air Attack

As requested. Coordinate requests with AOBDD.

On request: Check application avoidance areas

Request through Communication on Command Repeater. Give location: lat/long if known, and current visibility. Check Medical Plan/IAP.

All sling logistic request due to communications by 1200

Provide IA Helitack and loan copters on request

As requested. Coordinate with AOBDD.

UAS or Type 3 Helo w/IRIM on board

Dolan Fire CA-LPF-002428

LIFE FIRST-EVERYONE GOES HOME STOP . THINK. TALK AND THEN ACT

INCIDENT: Dolan Fire

DATE: 27 September

TIME: 0700-0700

Major Hazards and Risks:

- **ACCOUNTABILITY**- Make sure everyone is informed and understands the mission and or objectives for the operational period.
- **DRIVING**- Keep your speeds down on all roads. Visibility is very poor and roads are dirt and narrow in parts.
- **POSSIBLE EXTREME FIRE BEHAVIOR POTENTIAL**- All fuels are available and are burning aggressively. Ensure Lookouts, Communications, Escape Routes and Safety Zones are in place at all times and everyone understands the plan.
- **WIND AND HOT WEATHER**- Ensure you and your personnel are staying hydrated.
- **WATCH OUT**- Weather is becoming hotter and dryer
- **FATIGUE**- Ensure crews are getting enough breaks, nutrition and rest.

Narrative:

The outcome of a serious injury depends on the level of care and the quickness as to which the person can be transported to a hospital. Much of that depends on how prepared you are while out on the line. While out on the line discuss and train for an emergency, discuss what it will actually take to get someone off the line in a timely manner and remember that changes as the topography changes. With the scarcity of some resources it is important that you are adhering to the Fire Orders and Watch Outs. Please do not deviate from them or take short cuts. To put it to the test practice LIFE FIRST

Unexploded Ordinance

If you come across a suspicious object it could be and unexploded ordinance. If you're not sure do not approach it to help identify it. Here are a few steps to take to ensure your and those around you safety.

- Stop and back away
- Take a photo of it
- Get a Lat \ Long of its location
- Flag off a large perimeter
- Contact Dolan Communications and give a description of the object and the above information.



Incident Safety Officer Rick Bertram SOF2, Tom Zeulner SOF2

INCIDENT SAFETY ANALYSIS 215a

Dolan Fire - Sunday, September 27, 2020

8. Location	9. Hazard	6. Control or Abatement Action (Engineering, Administrative, PPE, Avoidance, Education, etc)
All	Driving & Traffic	<ul style="list-style-type: none"> ~ Practice "Defensive Driving" techniques traveling on all roads and city streets. ~ Use spotters when backing. ~ Honk horn to alert personnel when backing. ~ Keep clutter off dash and inside cab. ~ Follow Driving LCES (Lights, Chock blocks, Emergency brake, Seat belts. ~ Always use headlights. ~ Yield to pedestrians and bicycles. ~ Observe posted speed limits. ~ Use the 3 second rule for following distance when driving. ~ Use chock blocks, turn wheels into hill. ~ Avoid distractions (eating, cell phones, radio). ~ Ensure that windshields are kept clean of dust and bugs.
ALL	Possible Extreme Fire Behavior	<ul style="list-style-type: none"> ~ Ensure solid LCES in place ~ Establish trigger points and validate continuously ~ Is the safety zone a real safety zone? ~ Use Risk Assessment in IRPG P 1 prior to engaging ~ Know what the fire is doing at all times ~ Base all actions on current and expected fire behavior
All	Mop-up & Rehab	<ul style="list-style-type: none"> ~ Do not work above or below personnel during rehab/mop-up operations. ~ Alert crew personnel of rolling debris by yelling to affected individuals. ~ Position debris that could roll vertically on slope. ~ Wear eye protection.
All	Helicopter Operations	<ul style="list-style-type: none"> ~ Stay clear of all bucket drops when suppression actions are in place and allow 1 minute prior to re-entry. ~ Monitor A-G communications. ~ Follow aviation safety guidelines in IRPG P. 58 and IHOG.
ALL	Chain Saw Operations	<ul style="list-style-type: none"> ~ Follow "Hazard Tree Safety" guidelines, IRPG page 22 ~ Look up, Look down, Look around for hazard tree indicators. ~ Only fell and buck trees within your expertise, and training. ~ Follow "Procedural Felling Operations" on IRPG page 85. ~ Do not fall trees during high wind events. ~ Ensure proper use of all required PPE.
BR 4	Downhill Line Construction	<ul style="list-style-type: none"> ~ Watch for rolling materials ~ Ensure escape routes are realistic ~ Ensure radio communications are good ~ Watch footing and crew spacing ~ Post lookouts ~ Review IRPG P.9 prior to engagement ~ Review IRPG P.7
ALL	Unburned Area/Reburn Potential	<ul style="list-style-type: none"> ~ Monitor weather. ~ Base actions upon observed and predicted fire behavior. ~ LCES Checklist (IRPG pg. 6). ~ Look Up, Down and Around IRPG page 3-4.
ALL	Unidentified Hazardous Waste and Unexploded Ordinance	<ul style="list-style-type: none"> ~ Avoid identified Hazmat and UXO areas ~ Use "Unexploded Ordinance Safety" guidelines IRPG Page 27 ~ Deny entry to others. Do not transmit on radio if in proximity ~ Map location of all UXO and Hazmat.
ALL	Poisonous Plants	<ul style="list-style-type: none"> ~ Identify and Avoid hazard areas. ~ Launder clothing. ~ Shower frequently.
All / CAMPS	COVID-19	<ul style="list-style-type: none"> ~ Maintain at least 6' distancing from others at all times ~ Work as a unit of 1 for duration of incident ~ Wear masks around others if 6' distancing isn't maintained ~ Wear masks in camp at all times \ if no ones around use common sense ~ Wash hands often and use hand sanitizer through out the day ~ Report any illness to supervisor immediately and remove yourself from others ~ Notify Medical Unit of any illness ~ Do not share tools or equipment ~ Do not touch any part of your face
ALL	Night Operations	<ul style="list-style-type: none"> ~ Maintain high visibility in work area and wear vest while in roadway. ~ Use glow sticks to mark hazards. ~ Ensure personnel have a personal light (headlamp). ~ Watch for signs of fatigue. ~ Take breaks away from areas of known hazard.
ALL	Spike Camp	<ul style="list-style-type: none"> ~ Keep a clean camp. ~ Ensure communications are in place. ~ Review and observe "Line Spike" considerations IRPG page 95.
ALL	Mines	<ul style="list-style-type: none"> ~ Identify and avoid mining areas. ~ Notify others of hazard.

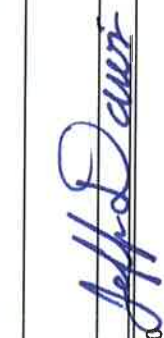
LB

ICS 205 - INCIDENT RADIO COMMUNICATIONS PLAN

CONTROLLED UNCLASSIFIED INFORMATION//BASIC

1. Incident Name: Dolan Incident Channels	2. Date/Time Prepared Date: 09/26/2020 Time: 1930	3. Operational Period: Date From: 09/27/20 Time From: 0700 Date To: 09/28/20 Time To: 0700
--	--	---

4. Communications									
Ch#	Function	Name	Assigned To	Rx Freq	Rx Tone	Tx Freq	Tx Tone	Notes	
1	COMMAND	CMD 1	ALL DIVS	170.9750	110.9	168.7000	110.9	C1 ANDERSON PEAK NORTHERN DIV A	
2	COMMAND	CMD 2	ALL DIVS	173.0250	110.9	165.3875	110.9	C41 JUNIPERO SERRA PEAK	
3	COMMAND	CMD 3	ALL DIVS	172.0750	110.9	162.2000	110.9	C47 CONE PEAK SOUTHERN DIV A, Z	
4	COMMAND	CMD 4	ALL DIVS	171.0875	110.9	164.0125	110.9	C32 ALDER PEAK	
5	COMMAND	CMD 5	ALL DIVS	173.8250	110.9	165.3625	110.9	C34 CHEWS RIDGE	
6	COMMAND	CMD 6	ALL DIVS	170.0125	110.9	165.2500	110.9	C9 PINYON PEAK	
7									
8	TACTICAL	TAC 2	DIV A, F, K, Z NIGHT OPS	168.6000	110.9	168.6000	110.9	NIFC T3	
9	TACTICAL	TAC 3	DIV M, O, P	166.7250	110.9	166.7250	110.9	NIFC T5	
10	TACTICAL	TAC 4	DIV R, S, W	166.7750	110.9	166.7750	110.9	NIFC T6	
11									
12	TACTICAL	VFIRE 21	DIV Y/X	154.2800	156.7	154.2800	156.7		
13	A/G COMMAND	A/G CMD	ALL DIVS	167.5500		167.5500			
14	A/G TACTICAL	A/G TAC	ALL DIVS	163.1500		163.1500			
15	MEDEVAC A/G	CALCORD	ALL DIVS	156.0750	156.7	156.0750	156.7	MEDICAL EVAC EMERGENCIES ONLY	
16	AIRGUARD	GUARD 18	ALL DIVS	168.6250		168.6250	110.9	EMERGENCIES ONLY	
17									
18									
19									
20	AIRGUARD	GUARD 18	ALL DIVS	168.6250		168.6250	110.9	EMERGENCIES ONLY	

5. Special Instructions	
[Blank area for special instructions]	
Prepared by (Communications Unit Leader): Name: DAVE PASCHKE COM1 JEFF DAVIS COM1-T Signature: 	
NIMS IAP	Date/Time: 09/26/20 1930

ICS 205 - INCIDENT RADIO COMMUNICATIONS PLAN

CONTROLLED UNCLASSIFIED INFORMATION/BASIC

1. Incident Name: Dolan IA GROUP	2. Date/Time Prepared Date: 09/26/2020 Time: 1930	3. Operational Period: Date From: 09/27/20 Date To: 09/28/20 Time From: 0700 Time To: 0700
--	--	---

4. Communications									
Ch#	Function	Name	Assigned To	Rx Freq	Rx Tone	Tx Freq	Tx Tone	Notes	
1	LPF CMD	LPF FN4	ALL DIVS	170.46250		164.91250	136.5	LPF ALDER PEAK T4	
2	LPF CMD	LPF FN6	ALL DIVS	170.46250		164.91250	156.7	LPF PIEDRAS BLANCAS T6	
3	LPF CMD	LPF FN8	ALL DIVS	170.46250		164.91250	103.5	LPF CONE PEAK T8	
4	LPF CMD	LPF FN10	ALL DIVS	170.46250		164.91250	107.2	LPF CHEWS RIDGE T10	
5	LPF CMD	LPF FN13	ALL DIVS	170.46250		164.91250	141.3	LPF ANDERSON T13	
6	LPF CMD	LPF FN15	ALL DIVS	170.46250		164.91250	162.2	LPF MANUEL MT. T15	
7	TACTICAL	LPF T3	ALL DIVS	168.2625		168.2625		LPF TACTICAL 3	
8	TACTICAL	LPF T4	ALL DIVS	163.7125		163.7125		LPF TACTICAL 4	
9	I/A TACTICAL	NIFC T2	ALL DIVS	168.2000		168.2000		NIFC T2 I/A ONLY	
10	LPF A/G	A/G 41	ALL DIVS	167.4750		167.4750		LPF A/G 41 PRIMARY	
11									
12									
13									
14									
15	MEDEVAC A/G	CALCORD	ALL DIVS	156.0750	156.7	156.0750	156.7	MEDICAL EVAC EMERGENCIES ONLY	
16	AIRGUARD	GUARD 18	ALL DIVS	168.6250		168.6250	110.9	EMERGENCIES ONLY	
17									
18									
19									
20	AIRGUARD	GUARD 18	ALL DIVS	168.6250		168.6250	110.9	EMERGENCIES ONLY	

5. Special Instructions	
	Signature: Date/Time: 09/26/20 1930

MEDICAL PLAN ICS 206	1. INCIDENT NAME Dolan Fire	2. DATE PREPARED 9/26/2020	3. TIME PREPARED 1900	4. OPERATIONAL PERIOD Day/Night 9/27/20 0700-0700				
5. INCIDENT MEDICAL AID STATIONS								
MEDICAL AID STATIONS	LOCATION			PARAMEDICS				
Frontline Medical	ICP			YES NO				
				X				
6. TRANSPORTATION								
A. AIR AMBULANCES								
NAME	LOCATION	PHONE	PARAMEDICS					
			YES	NO				
911 Provider Day-Night Mission	Variable - (40 min ETA)	Los Padres ECC 805-961-5727	X					
CHP H70 Hoist Day / Variable Night	Paso Robles, CA - (20 min ETA)	Paso Robles ECC 805-239-3553	X					
Mercy Air Night	FHL, CA - (10 min ETA)	FHL ECC 831-386-2526	X					
B. GROUND AMBULANCES & REM TEAMS								
NAME	LOCATION			PARAMEDICS				
				YES NO				
AMR 1	DP 54			X				
AMR 2	DP 72			X				
Atascadero Ambulance	DP 66			X				
REM 2	South Side of Fire							
7. HOSPITALS								
NAME	ADDRESS	TRAVEL TIME		PHONE	HELIPAD		BURN CTR	
		AIR	GRND		YES	NO	YES	NO
CHOMP LVL 3	23625 Holman Hwy Monterey, CA	N/A	30 Min	831-624-5311		X		X
Mee Memorial LVL 3	300 Canal St King City, CA	15 Min	60 Min	530-225-6000	X			X
Santa Clara Valley Med Ctr LVL 1	751 S. Bascom Ave.. San Jose, CA NN37 18.7713 X 121 55.9960	45 Min	90 Min	916-734-2011	X		X	
Natividad Medical Center LVL 2	1441 Constitution Blvd. Salinas Ca N36 41.8002 X W121 37.9853	25 Min	60 Min	831-755-6268	X			
Community Regional Med Ctr LVL 1	2823 Fresno St. Fresno, Ca N36 44.5702 X W119 47.0913	90 Min	180 Min	559-459-7401	X		X	
8. MEDICAL EMERGENCY PROCEDURES								
<u>LINE-EMERGENCY MEDICAL DAY/NIGHT PLAN:</u>					<u>LINE "NON-EMERGENCY INCIDENT" PLAN:</u>			
<ul style="list-style-type: none"> - Crew Supervisor to contact Division Supervisor/Operations with: <ul style="list-style-type: none"> • Patient Complaint, Condition and Location via Tactical or Command frequency. Priority 1/Red & 2/Yellow Patients trigger Incident within Incident (IWI). - Division Supervisor/Operation contacts Dolan Communications: <ul style="list-style-type: none"> • Division Supervisor or POC* will run "Medical -Emergency" on the Command frequency. • Division Supervisor or POC* to use "Medical Incident Report" worksheet on back of this page or back of IRPG. • Dolan Communication contacts Medical Unit Leader on the Command frequency or camp frequency. <p>POC* (Point of Contact) and/or Operations</p>					<ul style="list-style-type: none"> - Crew Supervisor to contact Division Supervisor with: <ul style="list-style-type: none"> • Patient Complaint, Condition and Location via Tactical or Command frequency. Priority 3/Green Patients <u>do not</u> trigger Incident within Incident (IWI). - Division Supervisor contacts Dolan Communications: <ul style="list-style-type: none"> • Division Supervisor or POC* will run "Non-Emergency Incident" on the Command frequency. • Division Supervisor or POC* will use "Medical Incident Report" worksheet on the back of this page or back of IRPG. • Dolan Communications contacts Medical Unit Leader on the Command frequency or camp frequency. 			
					<u>IN-CAMP 24 HOUR MEDICAL PLAN:</u>			
					<ul style="list-style-type: none"> - Contact Incident Communications with: Patient Complaint, Condition, and Location via Logs Net or Command frequency. 			
ICS 206	9. PREPARED BY: (Medical Unit Leader) Robert Ethridge MEDL			10. REVIEWED BY: (Safety Officer) Rick Bertram SOF2				

Medical Incident Report

FOR A NON-EMERGENCY INCIDENT, WORK THROUGH CHAIN OF COMMAND TO REPORT AND TRANSPORT INJURED PERSONNEL AS NECESSARY.

FOR A MEDICAL EMERGENCY: IDENTIFY ON SCENE INCIDENT COMMANDER BY NAME AND POSITION AND ANNOUNCE "MEDICAL EMERGENCY" TO INITIATE RESPONSE FROM IMT COMMUNICATIONS/DISPATCH.

Use the following items to communicate situation to communications / dispatch.

1. CONTACT COMMUNICATIONS / DISPATCH (Verify correct frequency prior to starting report)

Ex: "Communications, Div. Alpha. Stand-by for Emergency Traffic."

2. INCIDENT STATUS: Provide incident summary (including number of patients) and command structure.

Ex: "Communications, I have a Red priority patient, unconscious, struck by a falling tree. Requesting air ambulance to Forest Road 1 at (Lat./Long.) This will be the Trout Meadow Medical, IC is TFLD Jones. EMT Smith is providing medical care."

Severity of Emergency / Transport Priority	<input type="checkbox"/> RED / PRIORITY 1 Life or limb threatening injury or illness. Evacuation need is IMMEDIATE <i>Ex: Unconscious, difficulty breathing, bleeding severely, 2° – 3° burns more than 4 palm sizes, heat stroke, disoriented.</i>	
	<input type="checkbox"/> YELLOW / PRIORITY 2 Serious Injury or illness. Evacuation may be DELAYED if necessary. <i>Ex: Significant trauma, unable to walk, 2° – 3° burns not more than 1-3 palm sizes.</i>	
	<input type="checkbox"/> GREEN / PRIORITY 3 Minor Injury or illness. Non-Emergency transport <i>Ex: Sprains, strains, minor heat-related illness.</i>	
Nature of Injury or Illness & Mechanism of Injury		<i>Brief Summary of Injury or Illness (Ex: Unconscious, Struck by Falling Tree)</i>
Transport Request		<i>Air Ambulance / Short Haul/Hoist Ground Ambulance / Other</i>
Patient Location		<i>Descriptive Location & Lat. / Long. (WGS84)</i>
Incident Name		<i>Geographic Name + "Medical" (Ex: Trout Meadow Medical)</i>
On-Scene Incident Commander		<i>Name of on-scene IC of Incident within an Incident (Ex: TFLD Jones)</i>
Patient Care		<i>Name of Care Provider (Ex: EMT Smith)</i>

3. INITIAL PATIENT ASSESSMENT: Complete this section for each patient as applicable (start with the most severe patient)

Patient Assessment: See IRPG page 106

Treatment:

4. TRANSPORT PLAN:

Evacuation Location (if different): (Descriptive Location (drop point, intersection, etc.) or Lat. / Long.) Patient's ETA to Evacuation Location:

Helispot / Extraction Site Size and Hazards:

5. ADDITIONAL RESOURCES / EQUIPMENT NEEDS:

Example: Paramedic/EMT, Crews, Immobilization Devices, AED, Oxygen, Trauma Bag, IV/Fluid(s), Splints, Rope rescue, Wheeled litter, HAZMAT, Extrication

6. COMMUNICATIONS: Identify State Air/Ground EMS Frequencies and Hospital Contacts as applicable

Function	Channel Name/Number	Receive (RX)	Tone/NAC *	Transmit (TX)	Tone/NAC *
COMMAND					
AIR-TO-GRND					
TACTICAL					

7. CONTINGENCY: Considerations: If primary options fail, what actions can be implemented in conjunction with primary evacuation method? Be thinking ahead.

8. ADDITIONAL INFORMATION: Updates/Changes, etc.

REMEMBER: Confirm ETA's of resources ordered. Act according to your level of training. Be Alert. Keep Calm. Think Clearly. Act Decisively.

COVID-19 Best Practices / Mitigation

Minimize risk and limit exposure to COVID-19 by daily screening, minimizing large group settings, social distancing, wearing face coverings, hand washing, and practicing module of one concept.

At the beginning of the shift, supervisors should remind their personnel to self-screen for symptoms.

WILDLAND FIRE COVID-19 SCREENING TOOL

Today or in the past 24 hours, have you had any of the following symptoms¹?

Symptom
Cough more than expected?
Shortness of breath or difficulty breathing?
Fever? Chills?
Muscle pain, outside your normal for firefighting?
Sore throat?
New loss of taste or smell?
Fatigue, outside your normal for firefighting?
Headache, outside your normal for firefighting?
Congestion or runny nose, outside your normal for firefighting?
Nausea or vomiting
Diarrhea
¹ Take temperature with no-touch thermometer, if available ²

¹ Symptoms of Coronavirus

<https://www.cdc.gov/coronavirus/2019-ncov/symptoms-testing/symptoms.html>

Do your part to minimize your risk of exposure and limit the spread COVID-19.

Public Considerations

- ⇒ Wear a face covering when in public.
- ⇒ Wash your hands often.
- ⇒ Use hand sanitizer after pumping gas.
- ⇒ Use hand sanitizer prior to getting into your vehicle after visiting the grocery store or a restaurant.
- ⇒ Set the example while in the public eye.

*Keep in mind that fire camp is in a city with a populous and the potential for the COVID virus to be present is greater.

If you answered Yes to these symptoms, report it to your supervisor immediately, self-isolate away from other people until given direction and call **MEDICAL**.

Document all contacts with anyone other than your “module of one” for potential contact tracing (on your 214 Unit Activity Log)

Examples of when & what to document:

1. An STL is sitting in a vehicle with a Division Supervisor for 10-15 minutes or greater without wearing a face covering...Document this!
2. Someone from another work group enters your work space without a face covering for 10-15 minutes of greater...Document this!
3. Personnel from Division Alpha ties in with Division Bravo without a face covering and no proper social distancing...Document this!

Arrive healthy, go home healthy!

This page intentionally left blank





COVID-19 OPERATIONAL FLOWCHART

PERSONNEL SHALL BE SCREENED FOR S&S OF COVID-19 AT CHECK-IN.

ALL SUPERVISORS SHALL MONITOR THEIR PERSONNEL

- ALL PERSONNEL SHALL:**
- PRACTICE PHYSICAL DISTANCING
 - WEAR A MASK WHEN LESS THAN 6' FROM OTHERS
 - SHALL SELF-MONITOR FOR S&S
 - WASH HANDS OFTEN / USE HAND SANITIZER
 - AVOID FACIAL CONTACT WITH YOUR HANDS
 - NOTIFY THE MEDICAL UNIT OF ANY FLU-LIKE S&S
 - DO NOT SHARE TOOLS / EQUIPMENT

- SIGNS & SYMPTOMS INCLUDE:**
- CHILLS OR FEVER > 100.4°
 - COUGH, AND/OR SHORT OF BREATH
 - LOSS OF TASTE OR SMELL, SORE THROAT
 - CONGESTION, RUNNY NOSE
 - FATIGUE, HEADACHE, BODY ACHES
 - NAUSEA OR VOMITING
- (Do not report to your assignment if you are sick)*

- PERSONNEL WHO DEVELOP FLU-LIKE SYMPTOMS SHALL:**
- NOTIFY THEIR IMMEDIATE SUPERVISOR
 - REPORT TO THE MEDICAL UNIT FOR EVALUATION

- MEDICAL UNIT WILL:**
- EVALUATE PERSONNEL / MAKE RECOMMENDATIONS
 - TRACK PERSONNEL FOR THE INCIDENT
 - CONTACT-TRACING
 - MAKE NECESSARY TEAM & FOREST NOTIFICATIONS

- PERSONNEL EXPERIENCING FLU-LIKE SYMPTOMS SHALL BE TESTED:**
- SEEK MEDICAL CARE FOR FURTHER TESTING (TESTING SITES PROVIDED BY THE MEDL)
 - AFTER TESTING IS COMPLETE, PERSONNEL MAY HAVE TO QUARANTINE WHILE AWAITING RESULTS

- IF COVID-POSITIVE:**
- PERSONNEL SHALL ISOLATE AT APPROVED LOCATION UNTIL DEMOB'D (LOCATION PROVIDED BY THE MEDL)

- IF NEGATIVE:**
- FOLLOW AGENCY SPECIFIC GUIDELINES
 - OR, PER CDC, NO FURTHER ACTION REQUIRED

- SUPERVISOR SHOULD:**
- MAKE NOTIFICATIONS TO HOME UNIT
 - BEGIN AGENCY WORK-COMP PROCESS
 - COMPLETE DEMOB PROCESS

PERSONNEL: CONTINUE TO SELF-MONITOR
(Do not report to your assignment if you are sick)
 IF PERSONNEL IS TOO SICK, NOTIFY SUPERVISOR

IMT WILL PROVIDE DIRECTION AND SUPPORT UNTIL RECEIVED BY THE HOME UNIT

TEAM 15—MEDICAL UNIT WILL TRACK AND MONITOR ALL COVID RELATED EXPOSURES



IN-CAMP ISOLATION FLOWCHART:

- IN-CAMP GUIDELINES AS FOLLOWS:**
- PERSONNEL SHALL ISOLATE AT APPROVED LOCATION ONCE EVALUATED BY MEDICAL STAFF
 - MEDICAL UNIT WILL MONITOR PERSONNEL UNTIL DEMOBILIZED FROM THE INCIDENT

SHOULD PERSONNEL'S HEALTH STATUS DETERIORATE, CONTACT THE MEDICAL UNIT ASAP

- MEDICAL UNIT SHALL:**
- CONTACT COMMUNICATIONS - ARRANGE FOR TRANSPORTATION TO HOSPITAL IF NEEDED
 - CALL THE IMMEDIATE SUPERVISOR
 - MAKE NECESSARY TEAM & FOREST NOTIFICATIONS

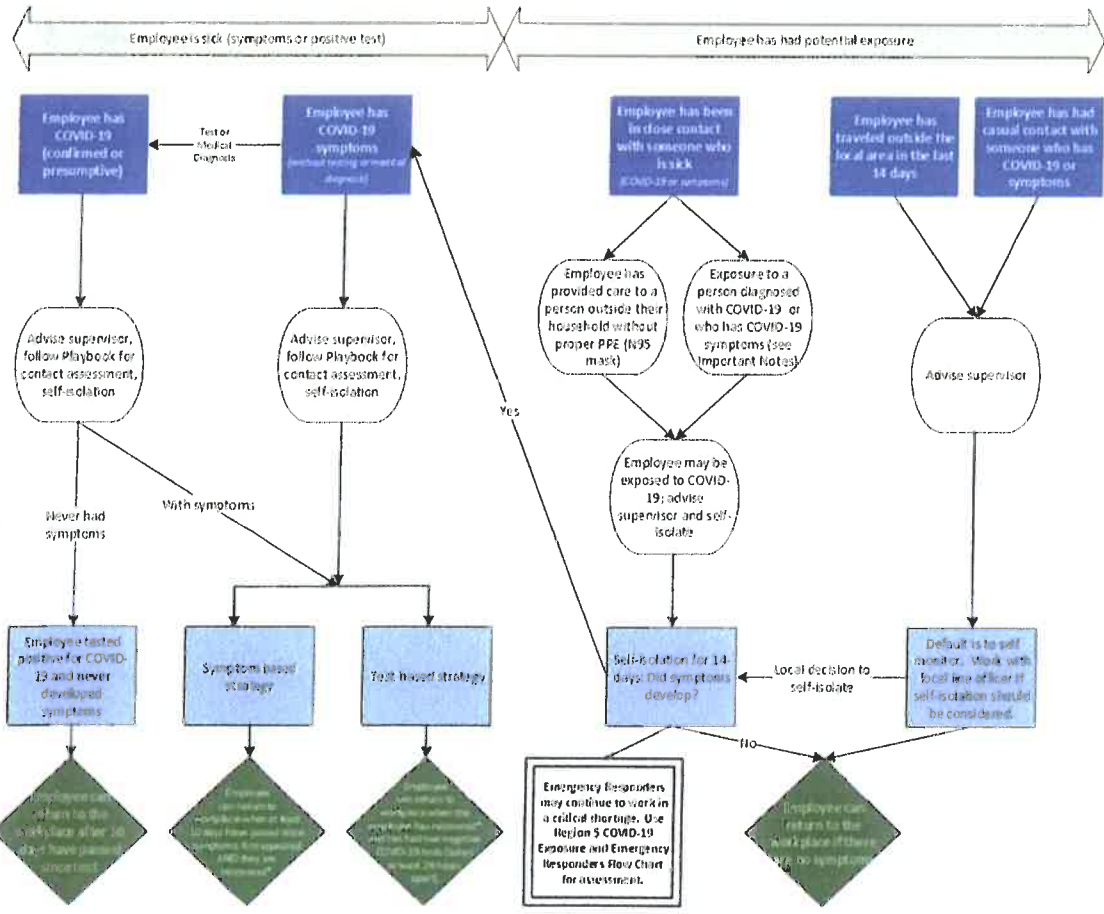
FEDERAL EMPLOYEES SHALL REFER TO REGION 5 — COVID-19 ACTION PROCESS FOR AGENCY SPECIFIC GUIDANCE



Region 5 Pacific Southwest Region COVID-19 Response Action Process

August 20, 2020

COVID-19 Response and Employee Notification



Important Notes:

- * Recovered is defined as 10 days since symptoms first appeared AND 24 hours with no fever without the use of fever-reducing medicines AND other symptoms of COVID-19 are improving.
- Symptoms of COVID-19 include cough, shortness of breath, trouble breathing, fever, chills, repeated shaking with chills, muscle or body aches, headache, sore throat, new loss of taste or smell, congestion or runny nose, nausea or vomiting, or diarrhea.
- Contact Assessment should be conducted to help determine potential exposure of additional employees; conduct assessment for the 2-day period before illness onset or test date of sick employees, whichever came first.
- Close contact is defined as less than 6 feet, for at least 15 minutes with or without face coverings/masks. Casual contact is defined as less than 6 feet for less than 15 minutes or more than 6 feet for more than 15 minutes.
- Any employee in "close contact with someone who is sick" may return to the workplace if the sick person is tested for COVID-19 and the test is negative.
- Contact with exposed individuals is classified as secondary contact and does not typically require self-isolation unless the exposed individual tests positive.
- You do not need to self-isolate unless you meet one of the criteria identified.
- Always follow the advice of a medical provider, if given, including any need for isolation or clearance for return-to-duty.

This document is subject to change based on CDC guidance.

LOGISTICS INFORMATION

<u>KING CITY ICP</u>		<u>PACIFIC VALLEY</u>	
Ordering	0600-2200	Showers	0500-1200 1400-2200
Ground Support	0500-2200	Fuel	0600-2130
Showers	0600-1100 1400-2200	Laundry Drop Off/Pickup	0600-1000 1800-2200
Meals	B 0600-0900 L 0600-2100 D 1800-2100	<u>MISSION SPIKE</u>	
Laundry	0600-2200	Saw Shop	0630-2100
Fuel - local gas stations or see Ground Support for special needs		Fuel	0600-2200
Communications	0600-2200		
Dispatch	24 hours		

We need your help!!!

Ground Support needs to locate the following rental vehicles that have been checked out. If you have one of the following vehicles, please stop by and see us or call 805-833-1106.

**E-242 E-243 E-244 E-245 E-344 E-346 E-382 E-383
E-402 E-403 E-405 E-505 E-506 E-507 E-508**

Utilize Collector App or Avenza and mark all accountable property (pumps, hose, tanks,...), attach a picture of the serial number with the LAT and LONG.

Virtual Times



Step 1: TAKE PICTURE OF YOUR CTR/SHIFT TICKETS !!

Step 2: UPLOAD PDF/PICTURE (JPG)

Step 3: Please add in the SUBJECT LINE your RESOURCE

NUMBER and LAST NAME/CREW NAME. EXAMPLE: O12.34 SMITH / C123 CREW NAME

Step 4: SEND EMAIL

OR Email TO:

2020.Dolan.Finance@firenet.gov

Need to talk to Finance:

Dolan Finance Phone: 323-394-8817

- PLEASE INDICATE BREAKS ON YOUR SHIFT TICKETS.
- PLEASE INCLUDE YOUR RESOURCE ORDER # ON ALL DOCUMENTATION SUBMITTED, INCLUDING RECEIPTS.
- IF POSSIBLE, PLEASE BE CONSISTENT WITH THE METHOD IN WHICH YOU SUBMIT YOUR DOCUMENTS.
- A JUSTIFICATION IN REMARKS IS REQUIRED FOR FEDERAL EMPLOYEES CLAIMING HAZARD PAY ON CTRS – FOR EXAMPLE, “WORKING IN DIVISION ____ WITH AN UNCORTOLLED FIRE LINE.”
- CREW CTRS NEED TOO SHOW ALL NAMES ON THE FIRST 2 SHIFT TICKETS OR ANY CREW SWAPS.
- PLEASE INDICATE RR DAYS IF TAKEN
- PLEASE TURN IN BOTH PINK AND BLUE SHIFT TIECKETS



2020.dolan@firenet.gov
Fire Information: 831-272-0222

Join the **Dolan Fire** morning briefings
Facebook Live, 7:00am on the
Los Padres National Forest
Facebook page
Use QR code below



TRAINING SPECIALIST MESSAGE

The Dolan Training link Is Up and Running

***Use the QR code found on the front of the IAP
Find the Training Folder and you can register.***

***If you need training forms, evaluations or
position task book help,
Ready to Close Out***

***You can contact the TNSP Jesse Roach at
(530) 966-3459 for training related questions.***

*Jesse Roach
Training Specialist*

TENTATIVE RELEASE
Dolan Fire CA-LPF-002428

9/27/20

OVERHEAD:

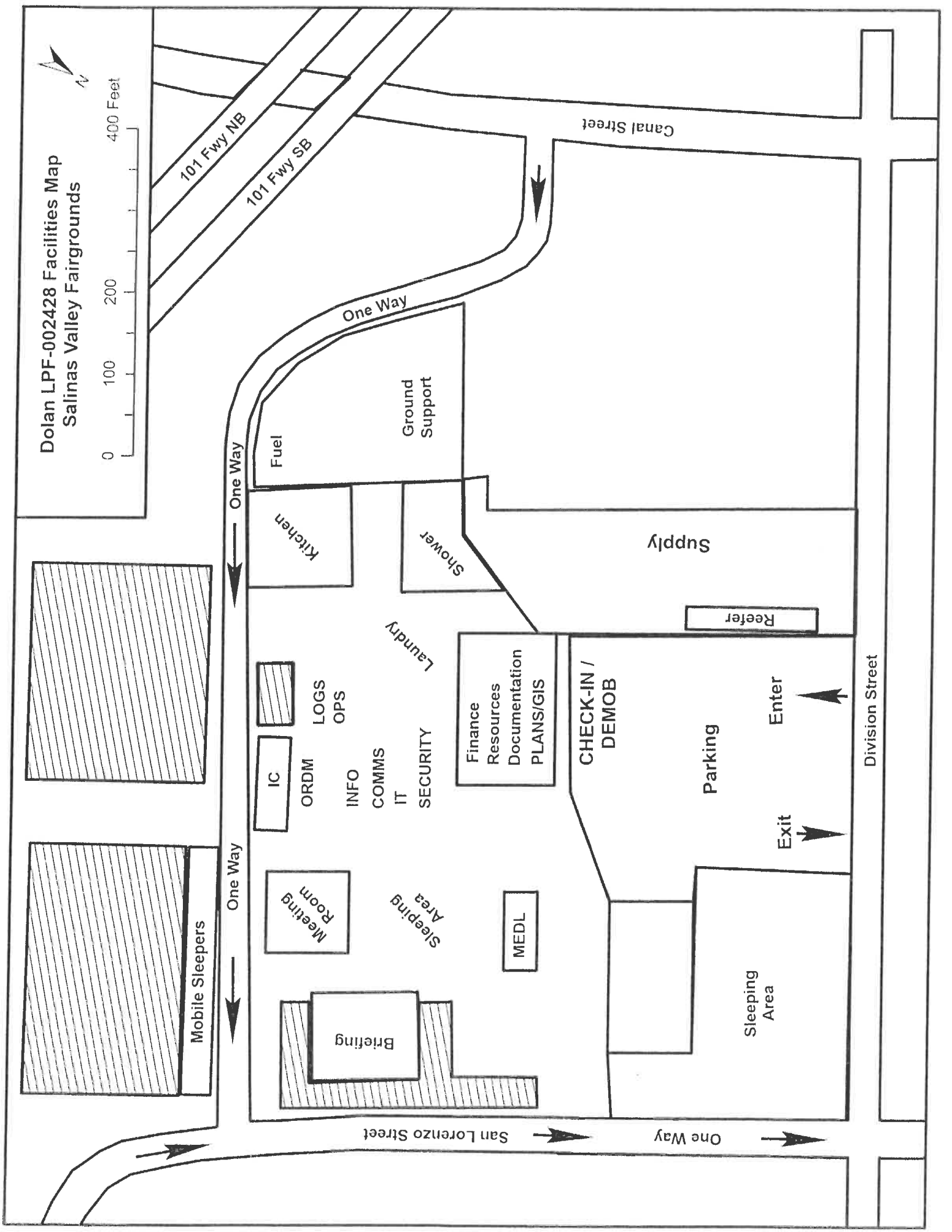
O-957.12	0600	(OSC2)	CRAIG, SHAUN
O-569	0700	(SOF2)	HADE, DAVID GREGORY
O-769	0730	(EQPM)	ARCHER, BRIAN J
O-752	0730	(REAF)	FIELDS, CAROL A
O-842	0800	(HEQB)	EROSKY, SHANE DANIEL
O-866	1800	(OSC2)	WALTER, TERRY J

IF YOU NEED A FLIGHT, CALL DEMOB AT **925-499-5889** OR RESOURCES AT **925-499-5909** WITH YOUR INFORMATION **AT LEAST 72 HOURS IN ADVANCE** SO WE CAN WORK ON YOUR FLIGHT ARRANGEMENTS.

If you develop Covid Symptoms and Test Positive for Covid 19 with 14 days after DEMOB, please notify:

Karina Gutierrez, USFS
928-227-7732
Karina.gutierrez@usda.gov

Dolan LPF-002428 Facilities Map
Salinas Valley Fairgrounds



UNIT LOG (ICS 214)

1. Incident Name: Dolan	2. Operational Period: Date From: 9/27/20 Date To: 9/28/20 Time From: 0700 Time To: 0700
-----------------------------------	--

3. Unit Name/Designators	4. Unit Leader (Name and ICS Position)
---------------------------------	---

5. Personnel Assigned/Designators		
NAME	ICS POSITION	HOME BASE

6. Activity Log (Continue on Reverse)	
TIME	MAJOR EVENTS

7. Prepared By: _____ Date/Time: _____