

# INCIDENT ACTION PLAN

# DOLAN AND COLEMAN FIRES

CA-LPF-002428 and CA-LPF-003161



**Incident Information**  
**2020.dolan@firenet.gov**  
**831-244-3762**

**PHONE BRIEFING FOR SPIKED AND REMOTE RESOURCES**  
**CALL 888-844-9904 - ENTER PASSCODE 4808672#**



Coleman IAP & Maps

**Thursday**  
**10/22/2020**  
**0700 - 1900**



Dolan IAP & Maps

WiFi Hotspot available near briefing area: Verizon-MiFi8800L-96B8 Password: 7e9c12b6

## INCIDENT OBJECTIVES (ICS 202)

<b>1. Incident Name:</b> Dolan and Coleman Fires	<b>2. Operational Period:</b>	Date From: 10/22/2020 Time From: 0700	Date To: 10/22/2020 Time To: 1900
---	-------------------------------	--	--------------------------------------

**3. Objective(s):**

**LEADERS INTENT**

Continue a full suppression strategy on the Dolan and Coleman Fires. Values at risk include human safety, private property, National Scenic Byway (Highway 1), Fort Hunter Liggett improvements, and wilderness values. Apply tactics that offer the highest probability of success. Identify, develop and prepare contingency measures in a proactive fashion. Develop and maintain an accurate and timely information sharing process for high values at risk.

**MANAGEMENT OBJECTIVES**

- Provide for firefighter and public safety through hazard recognition and risk management.
- Minimize risk and limit exposure by following COVID-19 best management practices.
- Minimize or avoid impacts to wilderness values by applying minimum impact suppression tactics (MIST).
- Utilize incident resource advisors to minimize impacts on natural and cultural resources.
- Distribute accurate and timely fire information to cooperators, the public, and stakeholders.
- Manage resources to meet protection objectives while maintaining fiscal accountability.

**CONTROL OBJECTIVES**

- Minimize risk to private property, surrounding communities, and resource values by:
- Maintaining the Dolan Fire within existing perimeter.
- Provide for suppression repair where most advantageous with existing resources.
- Utilize technology to manage risks to infrastructure, values at risk to guide aggressive mop up, control and suppression repair tactics.
- Conduct direct attack on the Coleman Fire when possible focusing on the north, south, and east flanks to protect values at risk. Construct indirect fireline if direct attack is not feasible.

**5. Site Safety Plan Required?** Yes  No

**Approved Site Safety Plan(s) Located at:**

**6. Incident Action Plan**

- |           |                   |                 |
|-----------|-------------------|-----------------|
| √ ICS 203 | √ ICS 206         | √ DEMOB Message |
| √ WX      | √ COVID-19        | √ ICS 214       |
| √ ICS 204 | √ ICS 208         | √ MIR 8 LINE    |
| √ ICS 220 | √ Finance Message |                 |
| √ ICS 205 | PIO Message       |                 |

**7. Prepared By:** Glenn Palmgren      Position/Title: PSC2 (t)      Signature:

**8. Approved by Incident Commander:** Steve Goldman      Signature:

## Fire Weather Forecast

FORECAST NO: 56

NAME OF FIRE: Dolan/Coleman CA-LPF-2428/3161

PREDICTION FOR: DAYSHIFT

UNIT: Los Padres National Forest

SHIFT DATE: 22 Oct 2020

SIGNED: 

TIME AND DATE

FORECAST ISSUED: 1900 / 21 October

Incident Meteorologist

**WEATHER DISCUSSION:** Low pressure moving through the northern Rockies and Great Basin will shift wind to the south and southwest, providing an onshore flow during the afternoon and keeping afternoon temperatures cooler and humidity higher. The inversion is also deepening and so higher humidity can be expected at night for elevations above 2500ft.

### **WEATHER FORECAST:**

**WEATHER:** Low clouds right along the coast during the morning, otherwise sunny.

**TEMPERATURE:** Coast high 62 to 66. Inland high 77 to 85.

**HUMIDITY:** Coast minimum 59 to 63 percent. Inland minimum 22 to 28 percent.

### **20 FT WIND:**

**COAST** - East northeast 1 to 4 mph, by 1200 becoming southwest 2 to 5 mph gusts to 8 mph.

**INLAND** – Northeast 1 to 4 mph, by 1100 becoming south southwest 1 to 5 mph gusts to 8 mph.

**HAINES INDEX:** 5 Moderate.

**LIGHTNING ACTIVITY LEVEL:** 1.

**STABILITY/INVERSION:** Inversion top at 3200ft elevation, by 1400 lifting to 5300ft elevation.

**OUTLOOK FOR TONIGHT:** Clear, except for low cloudiness along the coast returning. Low temperature: Coast 51 to 55. Inland 48 to 56. Maximum humidity: Below inversion 72 to 78 percent. Above inversion 52 to 56 percent. Coast wind south southwest 1 to 3 mph, by 0200 becoming south 1 to 3 mph. Inland wind south southwest 1 to 5 mph gusts to 8 mph, by 0200 becoming southeast 1 to 5 mph. Inversion top developing at around 4000ft elevation.

**OUTLOOK FOR FRIDAY:** Coastal low cloudiness during the morning, otherwise sunny. High temperature: Coast 61 to 65. Inland 67 to 75. Minimum humidity: Coast 63 to 67 percent. Inland 36 to 40 percent. Coast wind southeast 1 to 3 mph. Inland wind southeast 1 to 3 mph, by 1200 becoming southwest 1 to 4 mph.

**EXTENDED FORECAST:** **Fri night/Sat:** Mostly clear/Partly sunny. Low 47 to 55. High 61 to 72. Humidity up slightly. Afternoon inland wind southeast 1 to 4 mph. **Sat night/Sun:** Partly cloudy. Low 47 to 55. High 60 to 71. Little change to humidity. Afternoon coastal wind northwest 2 to 7 mph gusts to 12 mph. **Sun night/Mon:** Partly cloudy becoming mostly sunny. Low 43 to 51. High 62 to 73. Lower humidity. Afternoon inland wind southwest 3 to 8 mph gusts to 14 mph.

### **OBSERVATIONS:**

#### Observations from Wednesday

Location/Elevation:	Low Temp:	High Temp:	Max. RH	Min. RH	Rainfall
South Coast Ridge IRAWS/3250ft	67	82	33%	22%	0.00
Fort H-L RAWS/1116ft	47	93	71%	15%	0.00
Los Padres PRAWS/997ft	43	94	73%	14%	0.00
Arroyo Seco RAWS/879ft	57	93	52%	15%	0.00

## ORGANIZATION ASSIGNMENT LIST (ICS 203)

<b>1. Incident Name:</b> Dolan and Coleman Fires		<b>2. Operational Period: Date From:</b> 10/22/2020 Time From: 0700		<b>Date To:</b> 10/22/2020 <b>Time To:</b> 1900	
<b>3. Incident Commander(s) and Command Staff:</b>			<b>7. Operation Section:</b>		
IC/UC	Steve Goldman, Lucas Minton (t)	Field Ops	Joe Alyea		
	Larry "Mark" Alvarado (t)	Planning Ops	Keith Murphy		
Safety Officer	Chris Woods				
Information Officer	Micah Bell				
Liaison Officer	Roger Goldman				
<b>4. Agency/Organization Representatives:</b>			<b>Branch</b>		
Agency/Organization	Name	Division/Group	Suppression Repair	M.Rice, S.Cameron, R.Shields(t), P.Johnson(t)	
Los Padres AREP	Nick Larson	Division/Group	Coleman	M. Brown, B. Richwine(t), G. Laird(t)	
Los Padres AREP COVID Advisor	Charles "CJ" Woodard	Division/Group	Staging		
Big Sur Fire Dep.	Matt Harris				
Fort Hunter Liggett	Jeff Manetti				
Monterey Sheriff	Ray Tongol				
CHP	M. Olta, John Yerace				
CA State Parks	Matthew Khalar				
PG&E	Geoff Money				
<b>5. Planning Section:</b>			<b>Branch</b>		
Chief	Glenn Palmgren (t)				
Resource Unit					
Situation Unit	Ben Garrett (t)				
Documentation Unit					
GISS	Matt Judd				
FBAN					
IMET	Jack Messick	<b>Air Operations Branch</b>			
Training Specialist		Air Operations Branch Director			
ITSS	Bill Whitacre, Brian Lynch (t)	Air Support Group Supervisor			
Lead READ	Kevin Keeler	Tusi Helibase Manager		John Kaisersatt	
<b>6. Logistics Section</b>			<b>8. Finance/Administration Section:</b>		
Chief	Jamie Copple, Tim Oland (t)	Chief	Peter Beringer, Deb Niles (t)		
Ordering Manager	Chris Adamcik	Time Unit	Mary Coleman, Valarie Sanchez (t)		
Facilities Unit	Dave Avery	Comp/Claims Unit			
Ground Support Unit		Cost Unit			
Communications Unit	Peter Willis	Personnel Time	Rosemary Johnson		
Medical Unit	Mike Passarelli	Equipment Time	Araceli Nahas		
Base Camp Manager	Mike Johnson, Brian Bellew				
<b>Prepared By: Name:</b> Glenn Palmgren		<b>Position/Title:</b> PSC2 (t)		<b>Signature:</b> /s/ Glenn R. Palmgren	
<b>ICS 203</b>		<b>Date/Time:</b> 10/21/2020 2000		<small>NIMS IAP</small>	

# ASSIGNMENT LIST (ICS 204 WF)

CONTROLLED UNCLASSIFIED INFORMATION//BASIC

<b>1. Incident Name:</b> <b>Dolan and Coleman Fires</b>		<b>2. Operational Period:</b> Date From: 10/22/2020    Date To: 10/22/2020 Time From: 0700    Time To: 1900			<b>3. Branch</b> <b>Coleman</b>			<b>Division</b>			
								<b>Page 1 of 1</b>			
<b>4. Operations Personnel:</b>				Field Ops Section Chief: <b>Joe Alyea</b>						Planning Ops: <b>Keith Murphy</b>	
				Branch Director:						Branch Safety:	
Division/Group Supervisor: <b>M. Brown, B. Richwine(t), G. Laird(t)</b>										Air Attack:	
<b>5. Resources Assigned:      ***Resources in BOLD are identified as IA resources***</b>											
Resource Identifier	ALS	LWD	Leader	Personnel	Request #	Hours	Report to	Return to			
<b>ARROYO GRANDE FL CW IA</b>		<b>10/31</b>	<b>LARSON, SETH</b>	<b>10</b>	<b>A-171</b>	<b>0700-1900</b>	<b>Tusi Helibase</b>	<b>Tusi Helibase</b>			
HCS1 9316G		11/1	ALEMAN, ALDO	30	C-1	0700-1900	Mission ICP	Mission ICP			
HCS1 9464G		11/2	MILTON, NICHOLAS	30	C-8	1900-0700	Mission ICP	Mission ICP			
<b>HC2IA VANDENBERG CREW 2</b>		<b>10/25</b>	<b>HENDRICKS, JESSE</b>	<b>19</b>	<b>D C-115</b>	<b>0700-1900</b>	<b>Mission ICP</b>	<b>Mission ICP</b>			
HC2IA COBRAS 1		11/2	PALAZUELOS, FRANCISCO	20	C-5	0700-1900	Mission ICP	Mission ICP			
HC2 BLACK EAGLES		10/29	BEDOLLA, REYES	21	D C-126	0700-1900	Mission ICP	Mission ICP			
HC2 PACIFIC OASIS		10/30	MAZA, JASON	20	D C-123	0700-1900	Mission ICP	Mission ICP			
HC2 R&R CONTRACTING		10/23	IBARRA, ROGELIO	20	D C-124	0700-1900	Mission ICP	Mission ICP			
HC2 R&R CONTRACTING		10/23	IBARRA, ROGELIO	20	D C-124	0700-1900	Mission ICP	Mission ICP			
WFM2 SLATE MOUNTAIN		11/4	REYES, ANGEL	10	O-86	0700-1900	Mission ICP	Mission ICP			
ENG3 IN DUNES E-7852		10/22	RAMIREZ, BRANDON	5	D E-143	0700-1900	Mission ICP	Mission ICP			
<b>ENG3 CA-FHL E8833</b>		<b>10/25</b>	<b>FRYER, GREG</b>	<b>5</b>	<b>D E-455</b>	<b>0700-1900</b>	<b>Mission ICP</b>	<b>Mission ICP</b>			
ENG4 ID TRAILBLAZERS		10/26	CRAWLEY, BRIAN	3	D E-499	0700-1900	Mission ICP	Mission ICP			
ENG5 WILDLAND FIRE E7		10/26	WIMER, MATT	3	D E-227	0700-1900	Mission ICP	Mission ICP			
ENG6 RKY PT E324		10/28	COLBRY, SETH	3	D E-85	0700-1900	Mission ICP	Mission ICP			
ENG6 CA-STB E673		11/1	KENDALL, ROBERT	3	D E-562	0700-1900	Mission ICP	Mission ICP			
WTS1 A1		10/28	DALE, ELEVATORSKI	2	D E-599	0700-1900	Mission ICP	Mission ICP			
WTS3 KMT		10/28	TULL, KIM	2	D E-598	0700-1900	Mission ICP	Mission ICP			
DO22 FHL 8894		10/29	ROSA, RON	1	D E-583	0700-1900	Mission ICP	Ft Hunter Liggett			
DO22 LPF		10/26	FEURCK, MIKE	3	D E-572	0700-1900	Mission ICP	Mission ICP			
DO22 ENF		10/26	LANDGENDER, DAN	2	D E-576	0700-1900	Mission ICP	Mission ICP			
DO22 CM CONSTRUCTION		10/29	EDSALL, STEVEN	2	D E-582	0700-1900	Mission ICP	Mission ICP			
FMOD SWEDBERG		11/4	FRICKEL, KELLY	2	D O-1273	0700-1900	Mission ICP	Mission ICP			
FMOD SWEDBERG		11/4	WADLEY, LOGAN	2	D O-1274	0700-1900	Mission ICP	Mission ICP			
TFLD WOODY		10/29	WOODY, DAVID	1	D O-1253	0700-1900	Mission ICP	Mission ICP			
TFLD LACEY		11/3	LACEY, AARON	1	D O-1281	0700-1900	Mission ICP	Mission ICP			
TFLD WEBSTER		11/4	WEBSTER, RYAN	1	D O-1292	0700-1900	Mission ICP	Mission ICP			
STEQ(t) DEAN		10/31	DEAN, STEVEN	1	D O-1236	0700-1900	Mission ICP	Mission ICP			
HEQB DAUGHERTY (FHL)		10/29	DAUGHERTY, KEVIN	1	D O-1240	0700-1900	Mission ICP	Ft Hunter Liggett			
HEQB COLEMAN		10/30	COLEMAN, ALANI	1	D O-1238	0700-1900	Mission ICP	Mission ICP			
REMS 1 ANAHEIM FD	X	10/23	GUERRERO, PAUL	4	D O-1181	0700-1900	Mission ICP	Mission ICP			
EMPF COLOMBO	X	11/3	COLOMBO, ROGER	1	O-9	0700-1900	Mission ICP	Mission ICP			
<b>6. Work Assignments:</b>											
TASK: Construct containment line around the Coleman Fire.											
PURPOSE: Stop advancing fire in all directions.											
END STATE: Containment line around the entire fire and spread is stopped.											
RISK ASSESSMENT: Very steep terrain, heavy air operations, and emerging incident in wilderness.											
<b>7. Special Instructions:</b>											
-All medical resources MUST check in with Los Padres Dispatch and Division Supervisor once in place, see medical plan for REMS availability.											
-READs and the BAER Team will check in and out with Division.											
-Assume all divisions have Sudden Oak Death Pathogen and clean and disinfect everything. No weed wash is available use a commercial wash station where sump collection is done to prevent the further spread.											
-For Mop up and Patrol – Do not go off the road (UXO).											
-Utilize Collector to mark all accountable property (pumps, hose, tanks...), attach a picture of the serial number with the LAT and LONG.											
-INITIAL ATTACK RESOURCES will maintain a state of readiness for response. All responses will be initiated by Los Padres Dispatch. Resources will notify their DIVS if they are dispatched. Once the resource is cancelled/released they will return to the incident and notify comms that they are back in their division.											
<b>8. Communications</b>											
Name	Ch	Function	Rx Freq	Rx Tone	Tx Freq	Tx Tone	Notes				
LPF AN4	1	COMMAND	171.5500	CSQ	164.1500	136.5	LPF ADMIN NET ALDER PK T4				
LPF AN6	2	COMMAND	171.5500	CSQ	164.1500	156.7	LPF ADMIN NET PIEDRAS BLANCAS T6				
LPF AN8	3	COMMAND	171.5500	CSQ	164.1500	103.5	LPF ADMIN NET CONE PK T8				
LPF AN10	4	COMMAND	171.5500	CSQ	164.1500	107.2	LPF ADMIN NET CHEWS RIDGE T10				
LPF AN13	5	COMMAND	171.5500	CSQ	164.1500	141.3	LPF ADMIN NET ANDERSON T13				
LPF AN15	6	COMMAND	171.5500	CSQ	164.1500	162.2	LPF ADMIN NET CALANDRA T15				
NIFC T2	10	TACTICAL	168.2000	CSQ	168.2000	CSQ	NIFC T2 - COLEMAN FIRE DIV A				
NIFC T3	11	TACTICAL	168.6000	CSQ	168.6000	CSQ	NIFC T3 - COLEMAN FIRE DIV Z				
COLE A/G	12	A/G	169.2000	CSQ	169.2000	CSQ	AIR TO GROUND COLEMAN FIRE				
FOR NET8	13	COMMAND	170.4625	CSQ	164.9125	103.5	IA ONLY COMMAND				
LPF TAC3	14	TACTICAL	168.2625	CSQ	168.2625	CSQ	IA ONLY TACTICAL				
CALCORD	15	MEDEVAC A/G	156.0750	156.7	156.0750	156.7	MEDICAL EVAC EMERGENCIES ONLY				
AIRGUARD	16	AIRGUARD	168.6250	CSQ	168.6250	110.9	EMERGENCIES ONLY				
<b>9. Prepared by: Name:</b>			Glenn Palmgren		PSC2 (t)		Signature: /s/ Glenn R. Palmgren				
<b>ICS 204</b>		Date/Time: 10/21/2020			2000		Personnel Count:		249		

NIMS IAP

CONTROLLED UNCLASSIFIED INFORMATION//BASIC

# ASSIGNMENT LIST (ICS 204 WF)

CONTROLLED UNCLASSIFIED INFORMATION/BASIC

<b>1. Incident Name:</b> <b>Dolan and Coleman Fires</b>	<b>2. Operational Period:</b> Date From: 10/22/2020 Date To: 10/22/2020 Time From: 0700 Time To: 1900	<b>3. Branch</b> <span style="float: right;"><b>Division</b></span> <b>Suppression Repair</b>
--	---	--

Page 1 of 1

<b>4. Operations Personnel:</b>	
Field Ops Section Chief: <b>Joe Alyea</b>	Planning Ops: <b>Keith Murphy</b>
Branch Director:	Branch Safety:
Division/Group Supervisor: <b>M.Rice, S.Cameron, R.Shields(t), P.Johnson(t)</b>	Air Attack:

<b>5. Resources Assigned: ***Resources in BOLD are identified as IA resources***</b>								
Resource Identifier	ALS	LWD	Leader	Personnel	Request #	Hours	Report To	Return To
HC2 DESCANSO CREW 5		11/2	TINKER, LUKE	21	C C-4	0700-1900	Mission ICP	Mission ICP
HC2 SUNDOWNERS		11/4	HIOTT, PAUL	18	C-128	0700-1900	Mission ICP	Mission ICP
<b>ENG3 LPF E18</b>		<b>10/29</b>	<b>LOW, CHRIS</b>	<b>5</b>	<b>E-538</b>	<b>0700-1900</b>	<b>Pacific Valley</b>	<b>Pacific Valley</b>
<b>ENG7 LPF E17</b>		<b>10/29</b>	<b>DELGADO, ELAINE</b>	<b>2</b>	<b>E-542</b>	<b>0700-1900</b>	<b>Pacific Valley</b>	<b>Pacific Valley</b>
DO22 ALGERINE WEST		10/29	MONTE, WEST	2	E-569	0700-1900	Mission ICP	Mission ICP
DO22 BLACK RANGE		10/29	SHEPPERD, BRANDON	2	E-581	0700-1900	Mission ICP	Mission ICP
DO22 HAYDEN		10/25	HAYDEN, CODY	2	E-537	0700-1900	Mission ICP	Mission ICP
EXCA T1 BDRM		10/29	PAINTER, STEVE	1	E-590	0700-1900	Mission ICP	Mission ICP
EXCA T2 YLU0172		10/21	PARKER, KACY	2	E-568	0700-1900	Mission ICP	Mission ICP
EXCA T3 5157		10/28	PARKER, KYLE	2	E-580	0700-1900	Mission ICP	Mission ICP
EXCA T2		10/31	HAYDEN, COLTON	1	E-578	0700-1900	Mission ICP	Mission ICP
EXCA T2		10/30	KRUCKEBERG, JAMES	1	E-579	0700-1900	Mission ICP	Mission ICP
EXCA T2 BLACK RANGE		11/2	PEARSON, TIMOTHY	2	E-548	0700-1900	Mission ICP	Mission ICP
CHIP T3 CAT LAND		10/28	ALDRICH, VANESSA	3	E-575	0700-1900	Mission ICP	Mission ICP
ARCH RAY		10/29	RAY, MOLLY	1	O-1216	0700-1900	Mission ICP	Mission ICP
ARCH KISSINGER		10/27	KISSINFER, KRYSTAL	1	O-1228	0700-1900	Mission ICP	Mission ICP
REAF LEIS		10/22	LEIS, SHERRY	1	O-1192	0700-1900	Mission ICP	Mission ICP
REAF EDDINGS		10/22	EDDINGS, BENJAMIN	1	O-1191	0700-1900	Mission ICP	Mission ICP
REAF DOLAN		10/22	DOLAN, MICHAEL	1	O-1206	0700-1900	Mission ICP	Mission ICP
REAF HEARD		10/25	HEARD, CHARLES	1	O-1214	0700-1900	Mission ICP	Mission ICP
AMBU ATASCADERO 4X4	X	11/3	LAYTON, COLETTE	2	C E-14	0700-1900	Mission ICP	Mission ICP
EMPF BLINCOE	X	11/5	BLINCOE, JIM	1	D O-1233	0700-1900	Mission ICP	Mission ICP

**6. Work Assignments:**  
 TASK: Restore roads, dozer lines and drainage systems. Reduce visual impacts of the fire lines. Monitor the fires edge.  
 PURPOSE: Minimize potential for erosion and sediment delivery to water courses.  
 END STATE: To restore firelines and transportation routes back to prefire conditions as reasonably possible.  
 RISK ASSESSMENT: Stay alert for drivers in the fire area and in restricted areas. Watch for snags and rollout onto roads and working around heavy equipment.

**7. Special Instructions:**  
 -All medical resources MUST check in with Los Padres Dispatch and Division Supervisor once in place, see medical plan for REMS availability.  
 -READs and the BAER Team will check in and out with Division.  
 -Assume all divisions have Sudden Oak Death Pathogen and clean and disinfect everything. No weed wash is available use a commercial wash station where sump collection is done to prevent the further spread.  
 -For Mop up and Patrol – Do not go off the road (UXO).  
 -Utilize Collector to mark all accountable property (pumps, hose, tanks...), attach a picture of the serial number with the LAT and LONG.  
 -Use call outs when traveling on Nacimiento Ferguson Road.  
 -INITIAL ATTACK RESOURCES will maintain a state of readiness for response. All responses will be initiated by Los Padres Dispatch. Resources will notify their DIVS if they are dispatched. Once the resource is cancelled/released they will return to the incident and notify comms that they are back in their division.

<b>8. Communications</b>							
Name	Ch	Function	Rx Freq	Rx Tone	Tx Freq	Tx Tone	Notes
LPF AN4	1	COMMAND	171.5500	CSQ	164.1500	136.5	LPF ADMIN NET ALDER PK T4
LPF AN6	2	COMMAND	171.5500	CSQ	164.1500	156.7	LPF ADMIN NET PIEDRAS BLANCAS T6
LPF AN8	3	COMMAND	171.5500	CSQ	164.1500	103.5	LPF ADMIN NET CONE PK T8
LPF AN10	4	COMMAND	171.5500	CSQ	164.1500	107.2	LPF ADMIN NET CHEWS RIDGE T10
LPF AN13	5	COMMAND	171.5500	CSQ	164.1500	141.3	LPF ADMIN NET ANDERSON T13
LPF AN15	6	COMMAND	171.5500	CSQ	164.1500	162.2	LPF ADMIN NET CALANDRA T15
A/G TAC	7	A/G TACTICAL	163.1500	CSQ	163.1500	CSQ	AIR TO GROUND TAC DOLAN FIRE
A/G CMD	8	A/G COMMAND	167.5500	CSQ	167.5500	CSQ	AIR TO GROUND CMD DOLAN FIRE
LPF TAC4	9	TACTICAL	163.7125	CSQ	163.7125	CSQ	LPF TACTICAL DOLAN FIRE
FOR NET8	13	COMMAND	170.4625	CSQ	164.9125	103.5	IA ONLY COMMAND
LPF TAC3	14	TACTICAL	168.2625	CSQ	168.2625	CSQ	IA ONLY TACTICAL
CALCORD	15	MEDEVAC A/G	156.0750	156.7	156.0750	156.7	MEDICAL EVAC EMERGENCIES ONLY
AIRGUARD	16	AIRGUARD	168.6250	CSQ	168.6250	110.9	EMERGENCIES ONLY

**9. Prepared by: Name:** Glenn Palmgren PSC2 (t)  
 Signature: /s/ Glenn R. Palmgren  
**ICS 204** Date/Time: 10/21/2020 2000 Personnel Count: 73



## AIR OPERATIONS SUMMARY (ICS 220)

<b>1. Incident Name:</b> Coleman		<b>2. Operational Period:</b> Date From: 10/22/20 Time From: 0700		<b>3. Sunrise:</b> 07:19		<b>Sunset:</b> 18:19					
		Date To: 10/22/20 Time To: 2100									
<b>4. Remarks</b> (safety notes, hazards, air operations special equipment, etc.): All GPS data to be collected in DEGREES, MINUTES, DECIMAL MINUTES format. Hoist A/C: CHP H70 Paso Robles SBC H308 Santa Ynez NVG/ALS H406 BEU Bear Valley Day Hoist/BLS *****Utilize CALCCORD Freq. for hoist ops*****				<b>5. Ready Alert Aircraft:</b> Medivac: Mercy Air 20 FHL New Incident: H527				<b>6. Temporary Flight Restriction Number:</b> Altitude: 7000 feet MSL TFR 0/4604 Center Point: 36°06'28"N 121°21'01"W			
<b>8. Frequencies:</b> Air/Air Fixed-Wing				AM		FM					
<b>7. Personnel:</b> Name: _____ Phone Number: _____				133.2250		TFR					
Air Operations Branch Director				Air/Air Rotary-Wing – Flight Following		NONE					
Air Support Group Supervisor				Air/Ground		**Medevac A/G** CALCCORD Rx 156.0750 tn 156.7 / Tx 156.0750 tn 156.7					
Air Tactical Group Supervisor				Command		Other Fixed-Wing Aircraft:					
Helicopter Coordinator				Deck Coordinator		NONE					
Helibase Manager				Take-Off & Landing Coordinator							
Jeremy Blake 10/20/20				Air Guard		168.625 T1 110.9					
<b>10. Helicopters</b> (use additional sheets as necessary):											
FAA N#	Category/Kind/Type	Make/Model	Base	Available	Start	Remarks					
H527 / N534HQ	Type 2	Bell 205 A1 ++	Tusi	0830	0800	Tanked					
N48CC	Type 2 Restricted	Bell UH1H 703	Tusi	0830	0800	Tanked					
HT-1043T	Type 1	Sikorsky S61A	Tusi	0830	0800	Bucket					
HT-91158	Type 1	Sikorsky S-61	Tusi	0830	0800	Tanked					
<b>11. Prepared by:</b> Name: Eric Verdries				Position/Title: HEBM		Signature: ERIC VERDRIES					
Digitally signed by ERIC VERDRIES Date: 2020.10.21 14:35:41 -07'00'				Date/Time: 10/21/20 1700							





INCIDENT RADIO COMMUNICATIONS PLAN I-205		1. INCIDENT NAME		2. DATE/TIME PREPARED		3. OPERATIONAL PERIOD DATE/TIME					
		<b>DOLAN AND COLMAN FIRES</b>		10/21/2020 18:30		DAY SHIFT 10/22/2020					
4. BASIC RADIO CHANNEL UTILIZATION											
Ch #	Function	Channel Name	Assignment	RX Freq	N/W	RX Tone/NAC	TX Freq	N/W	TX Tone/NAC	Mode Analog (A) Digital (D) Mixed (M)	Remarks
1	COMMAND	LPF AN 4	ALL DIVISIONS	171.5500	N	CSQ	164.1500	N	136.5	A	LPF ADMIN NET ALDER PK T4 FOREST DISP NW OF FIRE
2	COMMAND	LPF AN 6	ALL DIVISIONS	171.5500	N	CSQ	164.1500	N	156.7	A	LPF ADMIN NET PIEDRAS BLANCAS T6 FOREST DISPATCH SOUTH OF FIRE
3	COMMAND	LPF AN 8	ALL DIVISIONS	171.5500	N	CSQ	164.1500	N	103.5	A	LPF ADMIN NET CONE PK T8 <b>ALL DIVISIONS</b> CONTACT FOREST DISP
4	COMMAND	LPF AN10	ALL DIVISIONS	171.5500	N	CSQ	164.1500	N	107.2	A	LPF ADMIN NET CHEWS RIDGE T10 DIVISION A/F/K CONTACT FOREST DISP
5	COMMAND	LPF AN13	ALL DIVISIONS	171.5500	N	CSQ	164.1500	N	141.3	A	LPF ADMIN NET ANDERSON T13 DIVISION A/F/K CONTACT FOREST DISP
6	COMMAND	LPF AN15	ALL DIVISIONS	171.5500	N	CSQ	164.1500	N	162.2	A	LPF ADMIN NET CALANDRA T15 FOREST DISPATCH EAST OF FIRE
7	A/G TACTICAL	A/G TAC	DOLAN FIRE A/G	163.1500	N	CSQ	163.1500	N	CSQ	A	AIR TO GROUND TAC DOLAN FIRE
8	A/G COMMAND	A/G CMD	DOLAN FIRE	167.5500	N	CSQ	167.5500	N	CSQ	A	AIR TO GROUND CMD DOLAN FIRE
9	TACTICAL	LPF TAC4	DOLAN FIRE	163.7125	N	CSQ	163.7125	N	CSQ	A	LPF TACTICAL - DOLAN FIRE
10	TACTICAL	NIFC T2	COLEMAN FIRE	168.2000	N	CSQ	168.2000	N	CSQ	A	NIFC T2- COLEMAN FIRE DIV A
11	TACTICAL	NIFC T3	COLEMAN FIRE	168.6000	N	CSQ	168.6000	N	CSQ	A	NIFC T3- COLEMAN FIRE DIV Z
12	A/G	COLE A/G	COLEMAN FIRE A/G	169.2000	N	CSQ	169.2000	N	CSQ	A	AIR TO GROUND COLEMAN
13	COMMAND	FOR NET8	IA WITH FOREST	170.4625	N	CSQ	164.9125	N	103.5	A	IA ONLY COMMAND
14	TACTICAL	LPF TAC3	IA WITH FOREST	168.2625	N	CSQ	168.2625	N	CSQ	A	IA ONLY TACTICAL
15	MEDEVAC A/G	CALCORD	ALL DIVISIONS	156.0750	N	156.7	156.0750	N	CSQ	A	MEDICAL EVAC EMERGENCIES ONLY
16	AIRGUARD	AIRGUARD	ALL DIVISIONS	168.6250	N	CSQ	168.6250	N	110.9	A	EMERGENCIES ONLY
<b>5. Special Instructions:</b>											
<b>6. I-205 Prepared By: Communications Unit Leader</b>				<b>Name:</b> Peter Willis				<b>Signature:</b> <i>Peter Willis</i>			

## EA IMT - Silver Contact List

POSITION	NAME	Contact Number	
<b>Incident Command</b>			
ICT2	Steve Goldman	414-308-7775	
ICT2(t)	Lucas Minton	928-707-1940	
<b>Safety</b>			
SOF2	Chris Woods	573-315-8394	
MEDL	Mike Passarelli	330-352-7534	
<b>Public Information</b>			
PIO2	Micah Bell	219-405-0125	
<b>Liason</b>			
LOFR	Roger Goldman	812-340-4266	
<b>Operations</b>			
OSC2	Keith Murphy	906-250-1382	
OSC2	Joe Alyea	989-305-1227	
DIVS	Mark Brown	207-233-9348	
DIVS	Mike Rice	218-368-2087	
DIVS(t)	Rob Shields	906-630-5092	
DIVS(t)	Patrick Johnson	218-370-0321	
<b>Aviation</b>			
<b>Planning</b>			
PSC2(t)	Glenn Palmgren	517-243-3487	
SITL(t)	Ben Garrett	715-579-3056	
GISS	Matt Judd	651-587-1351	
ITSS	Bill Whitacre	573-578-1889	
<b>Logistics</b>			
LSC2(t)	Tim Oland	608-799-1805	
FACL	Dave Avery	218-370-9805	
BCMG	Mike Johnson	218-235-9063	
ORDM	Chris Adamcik	936-238-8819	
	<b>Orders: cell: 936-238-8819</b>	<b>desk: 936-875-4803</b>	
COML	Peter Willis	320-630-3193	
EQPM	Mike Trierweiler	218-343-9371	
<b>Finance</b>			
FSC2	Peter Beringer	603-970-1338	
FSC2(t)	Deb Niles	989-745-2394	
TIME	Mary Coleman	573-210-7073	
TIME(t)	Valarie Sanchez	505-269-7808	
PTRC	Rosemary Johnson	218-252-2363	
<b>Important Emails</b>			
Ordering	<a href="mailto:fire.ordering@gmail.com">fire.ordering@gmail.com</a>	<b>cell: 936-238-8819</b>	<b>desk: 936-875-4803</b>
Finance Unit	<a href="mailto:2020.dolan.finance@firenet.gov">2020.dolan.finance@firenet.gov</a>		
Demob Unit	<a href="mailto:2020.dolan.dmob@firenet.gov">2020.dolan.dmob@firenet.gov</a>		
Resource Unit	<a href="mailto:2020.dolan.resources@firenet.gov">2020.dolan.resources@firenet.gov</a>		
Situation Unit	<a href="mailto:2020.dolan.situation@firenet.gov">2020.dolan.situation@firenet.gov</a>		

MEDICAL PLAN ICS 206		1. INCIDENT NAME  <b>Dolan Fire</b>	2. DATE PREPARED  10/21/2020	3. TIME PREPARED  1800	4. OPERATIONAL PERIOD  10/22/2020, 0600-2200						
<b>5. INCIDENT MEDICAL AID STATIONS</b>											
MEDICAL AID STATIONS		LOCATION					PARAMEDICS				
							YES	NO			
<b>Medical Unit</b>		<b>ICP</b>						X			
<b>6. TRANSPORTATION</b>											
<b>A. AIR AMBULANCES</b>											
NAME		LOCATION		PHONE		PARAMEDICS					
						YES	NO				
<b>911 Provider</b> Day-Night Mission		Variable - (40 min ETA)		Los Padres ECC 805-961-5727		X					
<b>CHP H70</b> Hoist Day / Variable Night		Paso Robles, CA - (20 min ETA)		Paso Robles ECC 805-239-3553		X					
<b>Mercy Air</b> Night		FHL, CA - (10 min ETA)		FHL ECC 831-386-2526		X					
<b>B. GROUND AMBULANCES &amp; REM TEAMS</b>											
NAME		Last Day		LOCATION			PARAMEDICS				
							YES	NO			
AMR 2				DP 72			X				
REMS 1 ALS		10/23		Coleman Fire			X				
Jim Blincoe EMP-F		11/5		Arroyo Seco			X				
Roger Colombo EMP-F		11/4		Coleman Fire			X				
Melanie Miller EMT-P		10/31		ICP			X				
John Seymer EMT-A		10/31		Tusi Helibase				X			
Atascadero Ambulance 4X4		11/5		DP-57			X				
<b>7. HOSPITALS</b>											
NAME		ADDRESS		TRAVEL TIME		PHONE		HELIPAD		BURN CTR	
				AIR	GRND			YES	NO	YES	NO
CHOMP LVL 3		23625 Holman Hwy Monterey, CA		N/A	1hr 20mi	831-624-5311			X		X
Mee Memorial LVL 3		300 Canal St King City, CA		15 Min	20min	831-385-6000		X			X
Santa Clara Valley Med Ctr LVL 1		751 S. Bascom Ave. San Jose, CA NN37 18.7713 X 121 55.9960		60 Min	2hrs	408-885-5000		X		X	
Natividad Medical Center LVL 2		1441 Constitution Blvd. Salinas Ca N36 41.8002 X W121 37.9853		25 Min	60 Min	831-755-6268		X			
Community Regional Med Ctr LVL 1		2823 Fresno St. Fresno, Ca N36 44.5702 X W119 47.0913		90 Min	180 Min	559-459-7401		X		X	
Big Sur Health Center Medical Clinic		46968 CA-1 Big Sur, CA 93920		N/A	2hrs	831-667-2580			X		X
<b>8. MEDICAL EMERGENCY PROCEDURES</b>											
<b><u>LINE-EMERGENCY MEDICAL DAY PLAN 0700 - 1930:</u></b>						<b><u>LINE "NON-EMERGENCY INCIDENT" DAY PLAN:</u></b>					
<ul style="list-style-type: none"> <li>- <b>Crew Supervisor</b> to contact Division Supervisor/Operations with: <ul style="list-style-type: none"> <li>• Patient Complaint, Condition and Location via Tactical or Command frequency. <b>Priority 1/Red &amp; 2/Yellow</b> Patients trigger Incident within Incident (IWI).</li> </ul> </li> <li>- <b>Division Supervisor/Operation</b> contacts Los Padres Communications: <ul style="list-style-type: none"> <li>• Division Supervisor or POC* will run "<b>Medical –Emergency</b>" on the Los Padres frequency.</li> <li>• Division Supervisor or POC* to use "<b>Medical Incident Report</b>" worksheet on back of this page or back of IRPG.</li> <li>• Los Padres Communication contacts Medical Unit Leader on the Command frequency or camp frequency.</li> </ul> </li> </ul> <p>POC* (Point of Contact) and/or Operations</p>						<ul style="list-style-type: none"> <li>- <b>Crew Supervisor</b> to contact Division Supervisor with: <ul style="list-style-type: none"> <li>• Patient Complaint, Condition and Location via Tactical or Los Padres frequency. <b>Priority 3/Green</b> Patients <b>do not</b> trigger Incident within Incident (IWI).</li> </ul> </li> <li>- <b>Division Supervisor</b> contacts Los Padres Communications: <ul style="list-style-type: none"> <li>• Division Supervisor or POC* will run "<b>Non-Emergency Incident</b>" on the Los Padres frequency.</li> <li>• Division Supervisor or POC* will use "<b>Medical Incident Report</b>" worksheet on the back of this page or back of IRPG.</li> <li>• Los Padres Communications contacts Medical Unit Leader on the Command frequency or camp frequency.</li> </ul> </li> </ul> <p><b><u>AFTER HOUR MEDICAL PLAN 1930 - 0700:</u></b></p> <ul style="list-style-type: none"> <li>- Contact <b>AMR Dispatch at 911 or 831-796-6444, then contact MEDL who will be located in the medical tent during the night.</b></li> </ul>					
<b>ICS 206</b>		9. PREPARED BY: (Medical Unit Leader) Mike Passarelli MEDL				10. REVIEWED BY: (Safety Officer) Chris Woods SOF2(t)					

# COVID-19 Best Practices / Mitigation

Minimize risk and limit exposure to COVID-19 by daily screening, minimizing large group settings, social distancing, wearing face coverings, hand washing, and practicing module of one concept.

At the beginning of the shift, supervisors should remind their personnel to self-screen for symptoms.

This document to be placed in the daily IAP

## WILDLAND FIRE COVID-19 SCREENING TOOL

Today or in the past 24 hours, have you had any of the following symptoms<sup>1</sup>?

Symptom
Cough more than expected?
Shortness of breath or difficulty breathing?
Fever? Chills?
Muscle pain, outside your normal for firefighting?
Sore throat?
New loss of taste or smell?
Fatigue, outside your normal for firefighting?
Headache, outside your normal for firefighting?
Congestion or runny nose, outside your normal for firefighting?
Nausea or vomiting
Diarrhea
<i>* Take temperature with no-touch thermometer, if available *</i>

<sup>1</sup>Symptoms of Coronavirus

<https://www.cdc.gov/coronavirus/2019-ncov/symptoms-testing/symptoms.html>

*Do your part to minimize your risk of exposure and limit the spread COVID-19.*

## Public Considerations

- ⇒ Wear a face covering when in public.
- ⇒ Wash your hands often.
- ⇒ Use hand sanitizer after pumping gas.
- ⇒ Use hand sanitizer prior to getting into your vehicle after visiting the grocery store or a restaurant.
- ⇒ Set the example while in the public eye.

\*Keep in mind that fire camp is in a city with a populous and the potential for the COVID virus to be present is greater.

If you answered Yes to these symptoms, report it to your supervisor immediately, self-isolate away from other people until given direction and call **MEDICAL**.

---



# COVID-19 OPERATIONAL FLOWCHART

**PERSONNEL SHALL BE SCREENED FOR S&S OF COVID-19 AT CHECK-IN** ← *ALL SUPERVISORS SHALL MONITOR THEIR PERSONNEL*

- ALL PERSONNEL SHALL:**
- PRACTICE PHYSICAL DISTANCING
  - WEAR A MASK WHEN LESS THAN 6' FROM OTHERS
  - SHALL SELF-MONITOR FOR S&S
  - WASH HANDS OFTEN / USE HAND SANITIZER
  - AVOID FACIAL CONTACT WITH YOUR HANDS
  - NOTIFY THE MEDICAL UNIT OF ANY FLU-LIKE S&S
  - DO NOT SHARE TOOLS / EQUIPMENT

- SIGNS & SYMPTOMS INCLUDE:**
- CHILLS OR FEVER > 100.4°
  - COUGH, AND/OR SHORT OF BREATH
  - LOSS OF TASTE OR SMELL, SORE THROAT
  - CONGESTION, RUNNY NOSE
  - FATIGUE, HEADACHE, BODY ACHES
  - NAUSEA OR VOMITING
- (Do not report to your assignment if you are sick)*

- PERSONNEL WHO DEVELOP FLU-LIKE SYMPTOMS SHALL:**
- NOTIFY THEIR IMMEDIATE SUPERVISOR
  - REPORT TO THE MEDICAL UNIT FOR EVALUATION

- MEDICAL UNIT WILL:**
- EVALUATE PERSONNEL / MAKE RECOMMENDATIONS
  - TRACK PERSONNEL FOR THE INCIDENT  
- CONTACT-TRACING
  - MAKE NECESSARY *TEAM & FOREST* NOTIFICATIONS

- PERSONNEL EXPERIENCING FLU-LIKE SYMPTOMS SHALL BE TESTED:**
- SEEK MEDICAL CARE FOR FURTHER TESTING ( TESTING SITES PROVIDED BY THE MEDL )
  - AFTER TESTING IS COMPLETE, PERSONNEL MAY HAVE TO QUARANTINE WHILE AWAITING RESULTS

- IF COVID-POSITIVE:**
- PERSONNEL SHALL ISOLATE AT APPROVED LOCATION UNTIL DEMOB'D (LOCATION PROVIDED BY THE MEDL)

- IF NEGATIVE:**
- FOLLOW AGENCY SPECIFIC GUIDELINES
  - OR, PER CDC, NO FURTHER ACTION REQUIRED

- SUPERVISOR SHOULD:**
- MAKE NOTIFICATIONS TO HOME UNIT
  - BEGIN AGENCY WORK-COMP PROCESS
  - COMPLETE DEMOB PROCESS

- PERSONNEL: CONTINUE TO SELF-MONITOR**  
*(Do not report to your assignment if you are sick)*  
**IF PERSONNEL IS TOO SICK, NOTIFY SUPERVISOR**

**IMT WILL PROVIDE DIRECTION AND SUPPORT UNTIL RECEIVED BY THE HOME UNIT**

**FDNY IMT - MEDICAL UNIT WILL TRACK AND MONITOR ALL COVID RELATED EXPOSURES**

# IN-CAMP ISOLATION FLOWCHART:

- IN-CAMP GUIDELINES AS FOLLOWS:**
- PERSONNEL SHALL ISOLATE AT APPROVED LOCATION ONCE EVALUATED BY MEDICAL STAFF
  - MEDICAL UNIT WILL MONITOR PERSONNEL UNTIL DEMOBILIZED FROM THE INCIDENT

**SHOULD PERSONNEL'S HEALTH STATUS DETERIORATE, CONTACT THE MEDICAL UNIT ASAP**

- MEDICAL UNIT SHALL:**
- CONTACT COMMUNICATIONS - ARRANGE FOR TRANSPORTATION TO HOSPITAL IF NEEDED
  - CALL THE IMMEDIATE SUPERVISOR
  - MAKE NECESSARY TEAM & FOREST NOTIFICATIONS

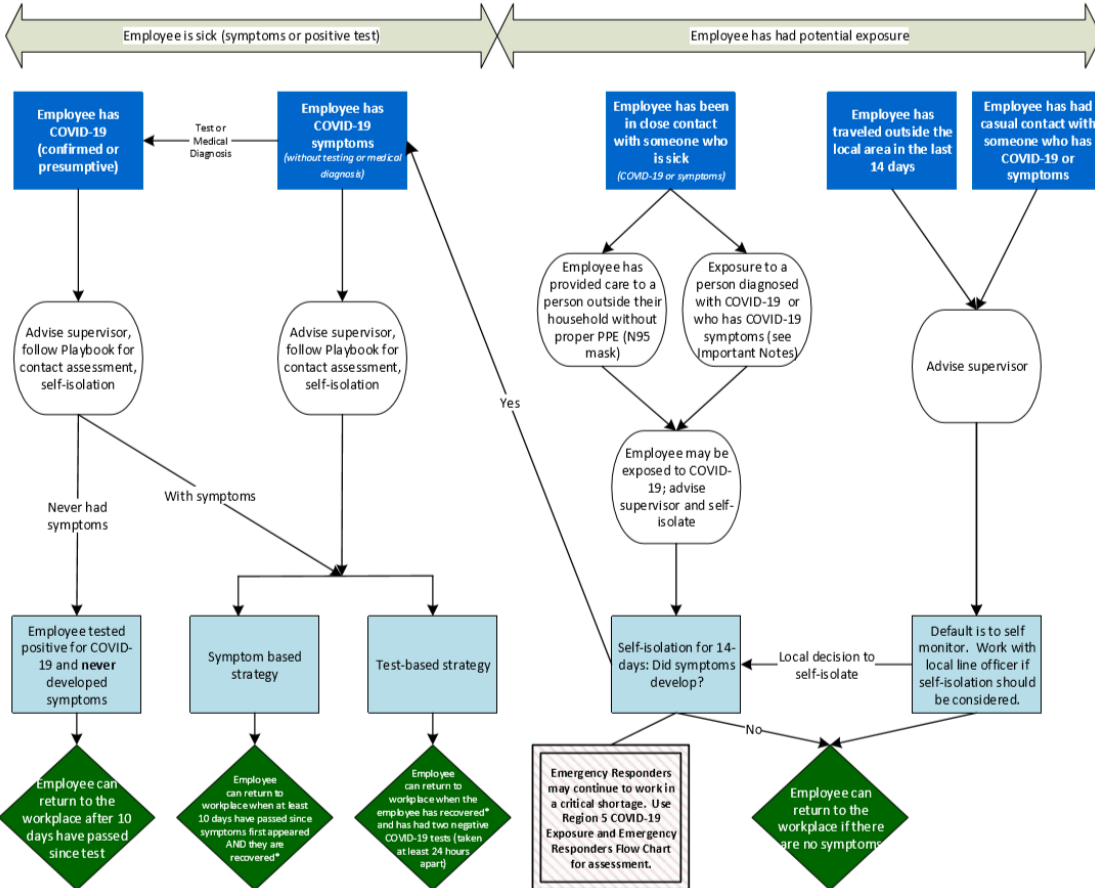
**FEDERAL EMPLOYEES SHALL REFER TO REGION 5 — COVID-19 ACTION PROCESS FOR AGENCY SPECIFIC GUIDANCE**



## Region 5 Pacific Southwest Region COVID-19 Response Action Process

August 20, 2020

### COVID-19 Response and Employee Notification



**Important Notes:**

- \* Recovered is defined as 10 days since symptoms first appeared AND 24 hours with no fever without the use of fever-reducing medicines AND other symptoms of COVID-19 are improving.
- Symptoms of COVID-19 include cough, shortness of breath, trouble breathing, fever, chills, repeated shaking with chills, muscle or body aches, headache, sore throat, new loss of taste or smell, congestion or runny nose, nausea or vomiting, or diarrhea.
- Contact Assessment should be conducted to help determine potential exposure of additional employees; conduct assessment for the 2-day period before illness onset or test date of sick employees, whichever came first.
- Close contact is defined as less than 6 feet, for at least 15 minutes with or without face coverings/masks. Casual contact is defined as less than 6 feet for less than 15 minutes or more than 6 feet for more than 15 minutes.
- Any employee in "close contact with someone who is sick" may return to the workplace if the sick person is tested for COVID-19 and the test is negative.
- Contact with exposed individuals is classified as secondary contact and does not typically require self-isolation unless the exposed individual tests positive.
- You do not need to self-isolate unless you meet one of the criteria identified.
- Always follow the advice of a medical provider, if given, including any need for isolation or clearance for return-to-duty.

*This document is subject to change based on CDC guidance.*

**Incident:**

**Dolan Fire & Coleman Fire**

**Date:**

**10/22/20**

**Shift:**

**0700-1930**



# **SAFETY MESSAGE**

## **SAFETY IS OUR FIRST PRIORITY**

*Fire fighter safety comes first on every fire, every time*



### **SAFETY THOUGHT FOR TODAY**

*“The dynamic wildland fire suppression environment is complex and possesses inherent hazards. Therefore, we will do our best to aggressively manage the risk because no resource or facility is worth the loss of human life”. HTTF Task Group*

### **MAJOR HAZARDS AND RISKS TO THINK ABOUT TODAY:**

**Situational Awareness (SA):** SA is a key component of risk management and must be maintained at all times. Conduct SA briefings to brainstorm and consider specific ways in which you can increase awareness of the hazards you face. Evaluate the hazards involved with your activities and mitigate for these hazards to reduce exposure to an acceptable level of risk for firefighters and others. Achieve and maintain good SA both individually, within your crew, and between different types of resources.

**RISK MANAGEMENT:** Aggressive risk management is our primary means of maintaining safe wildland fire operations. Consistently evaluate fireline tactics and do not hesitate to adjust tactics as environmental and human factor conditions change -- Review Risk Management Process in IRPG, Page 1.

**HAZARD TREES:** Exercise extreme caution when working in timber canopy areas -- assume every tree has some level of hazard associated with it. Review **“PRINCIPLES OF HAZARD TREE RISK MANAGEMENT”** at: [http://www.nwcg.gov/teams/shwt/httf/training\\_education/s212/ht-risk-mgmt.pdf](http://www.nwcg.gov/teams/shwt/httf/training_education/s212/ht-risk-mgmt.pdf).

Watch-out Situation



3. SAFETY ZONES AND ESCAPE ROUTES NOT IDENTIFIED

Identify Dead and Green Hazard Trees



**Safety Officer – Eastern Area IMT**

Chris Woods, SOF2(t)



# DIRECTIONS FOR FILLING OUT A CTR/SHIFT TICKET AND SUBMITTING THEM ELECTRONICALLY

**Financial Information:**

**Fire Name:** Dolan

**Fire Number:** CA-LPF-002428 / P5NF6M21 (0507)

**Financial Information:**

Coleman

CA-LPF-003161 / P5NPD921 (0507)

**Fire Office Responsible for Fire:** Los Padres Nation Forest

**Remarks Section of CTR or Shift Ticket:** Your phone #, email and Fire Name

**Finance Email:** [2020.dolan.finance@firenet.gov](mailto:2020.dolan.finance@firenet.gov) (We will use this email for both fires)

**Finance Documents Needed (If Not Already Submitted):**

<b>Overhead:</b> <ul style="list-style-type: none"><li>• Resource Order</li><li>• AD Hire Form (If an AD)</li><li>• CTR's</li></ul>	<b>Cooperator:</b> <ul style="list-style-type: none"><li>• Cooperative Agreement</li><li>• Resource Order</li><li>• Shift Ticket</li></ul>
---	--

**Please send in your CTR or Shift Ticket daily. You can:**

1. Send a hard copy of CTR or Shift Ticket
2. Take a picture of signed CTR or Shift ticket and email in  
(Please place your O# or E# in the subject line of your email)
3. Use QR code to download a fillable CTR or Shift Ticket and email signed copy in

**For Finance assistance please contact:**

**Mary Coleman at (573) 210-7073**

**Or (916) 798-3083**

## QR Codes for:

Finance Email



Finance Check-in



Fillable CTR & Shift Ticket



10/22/2020

TENTATIVE RELEASE

DOLAN US-CA-LPF-002428

**EQUIPMENT**

E-574          0800                      (CHIP)              MISC - CHIPPER, T3 -

**OVERHEAD**

O-1192        1900                      (REAF)              LEIS, SHERRY

10/23/2020

TENTATIVE RELEASE

DOLAN US-CA-LPF-002428

**CREWS**

C-122        0730                      (CC)                SAN DIEGO 22

**EQUIPMENT**

E-143        0900                      (ENG3)              INDIANA DUNES E-5673

**OVERHEAD**

O-1206       0800                      (REAF)              DOLAN, MICHAEL P

O-1191       0830                      (REAF)              EDDINGS, BENJAMIN

O-1230       1200                      (EQTR)              NAHAS, ARACELI

10/24/2020

TENTATIVE RELEASE

DOLAN US-CA-LPF-002428

**OVERHEAD**

O-1181       0730                      (RES)                MODULE - REMS - XOR REMS2

O-1155       1900                      (LSC3)              COPPLE, JAMES D



# MEDICAL PLAN (ICS 206 WF)

Controlled Unclassified Information//Basic

## Medical Incident Report

**FOR A NON-EMERGENCY INCIDENT, WORK THROUGH CHAIN OF COMMAND TO REPORT AND TRANSPORT INJURED PERSONNEL AS NECESSARY.**

**FOR A MEDICAL EMERGENCY: IDENTIFY ON SCENE INCIDENT COMMANDER BY NAME AND POSITION AND ANNOUNCE "MEDICAL EMERGENCY" TO INITIATE RESPONSE FROM IMT COMMUNICATIONS/DISPATCH.**

Use the following items to communicate situation to communications/dispatch.

**1. CONTACT COMMUNICATIONS / DISPATCH (Verify correct frequency prior to starting report)**

*Ex: "Communications, Div. Alpha. Stand-by for Emergency Traffic."*

**2. INCIDENT STATUS: Provide incident summary (including number of patients) and command structure.**

*Ex: "Communications, I have a Red priority patient, unconscious, struck by a falling tree. Requesting air ambulance to Forest Road 1 at (Lat./Long.) This will be the Trout Meadow Medical, IC is TFLD Jones. EMT Smith is providing medical care."*

Severity of Emergency / Transport Priority	<input type="checkbox"/> RED / PRIORITY 1 Life or limb threatening injury or illness. Evacuation need is IMMEDIATE <i>Ex: Unconscious, difficulty breathing, bleeding severely, 2° – 3° burns more than 4 palm sizes, heat stroke, disoriented.</i> <input type="checkbox"/> YELLOW / PRIORITY 2 Serious Injury or illness. Evacuation may be DELAYED if necessary. <i>Ex: Significant trauma, unable to walk, 2° – 3° burns not more than 1-3 palm sizes.</i> <input type="checkbox"/> GREEN / PRIORITY 3 Minor Injury or illness. Non-Emergency transport <i>Ex: Sprains, strains, minor heat-related illness.</i>	
Nature of Injury or Illness & Mechanism of Injury		<i>Brief Summary of Injury or Illness (Ex: Unconscious, Struck by Falling Tree)</i>
Transport Request		<i>Air Ambulance / Short Haul/Hoist Ground Ambulance / Other</i>
Patient Location		<i>Descriptive Location &amp; Lat. / Long. (WGS84)</i>
Incident Name		<i>Geographic Name + "Medical" (Ex: Trout Meadow Medical)</i>
On-Scene Incident Commander		<i>Name of on-scene IC of Incident within an Incident (Ex: TFLD Jones)</i>
Patient Care		<i>Name of Care Provider (Ex: EMT Smith)</i>

**3. INITIAL PATIENT ASSESSMENT: Complete this section for each patient as applicable (start with the most severe patient)**

Patient Assessment: See IRPG page 106

Treatment:

**4. TRANSPORT PLAN:**

Evacuation Location (if different): (Descriptive Location (drop point, intersection, etc.) or Lat. / Long.) Patient's ETA to Evacuation Location:

Helispot / Extraction Site Size and Hazards:

**5. ADDITIONAL RESOURCES / EQUIPMENT NEEDS:**

*Example: Paramedic/EMT, Crews, Immobilization Devices, AED, Oxygen, Trauma Bag, IV/Fluid(s), Splints, Rope rescue, Wheeled litter, HAZMAT, Extrication*

**6. COMMUNICATIONS: Identify State Air/Ground EMS Frequencies and Hospital Contacts as applicable**

Function	Channel Name/Number	Receive (RX)	Tone/NAC *	Transmit (TX)	Tone/NAC *
COMMAND					
AIR-TO-GRND					
TACTICAL					

**7. CONTINGENCY: Considerations: If primary options fail, what actions can be implemented in conjunction with primary evacuation method? Be thinking ahead.**

**8. ADDITIONAL INFORMATION: Updates/Changes, etc.**

**REMEMBER:** Confirm ETA's of resources ordered. Act according to your level of training. Be Alert. Keep Calm. Think Clearly. Act Decisively.