

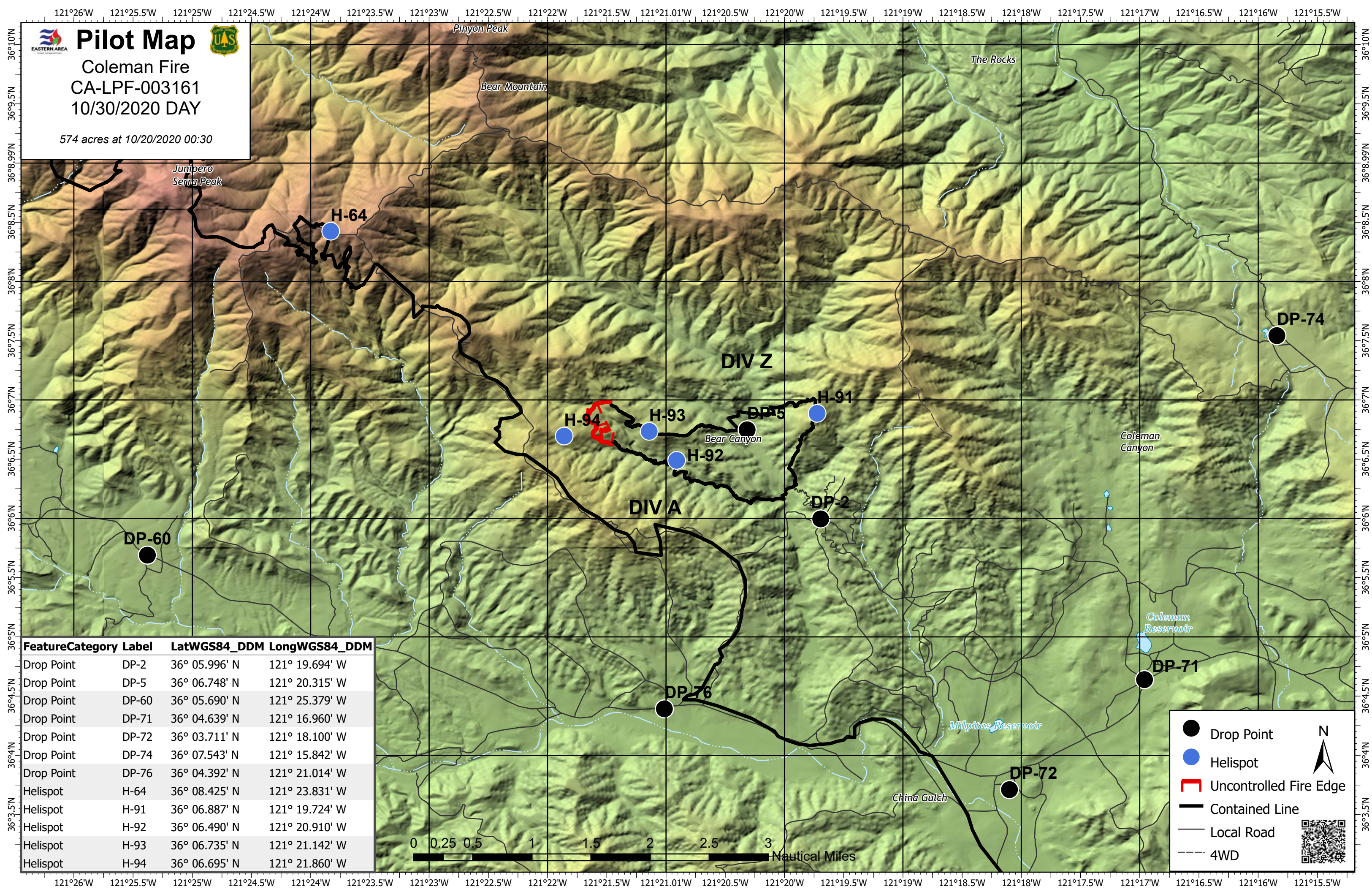
Pilot Map

Coleman Fire

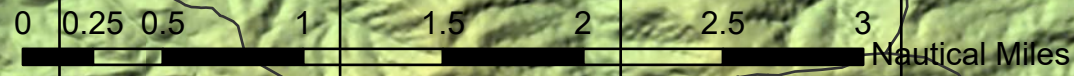
CA-LPF-003161







10/30/2020 DAY

574 acres at 10/20/2020 00:30



Feature	Category	Label	LatWGS84_DDM	LongWGS84_DDM
Drop Point	DP-2		36° 05.996' N	121° 19.694' W
Drop Point	DP-5		36° 06.748' N	121° 20.315' W
Drop Point	DP-60		36° 05.690' N	121° 25.379' W
Drop Point	DP-71		36° 04.639' N	121° 16.960' W
Drop Point	DP-72		36° 03.711' N	121° 18.100' W
Drop Point	DP-74		36° 07.543' N	121° 15.842' W
Drop Point	DP-76		36° 04.392' N	121° 21.014' W
Helispot	H-64		36° 08.425' N	121° 23.831' W
Helispot	H-91		36° 06.887' N	121° 19.724' W
Helispot	H-92		36° 06.490' N	121° 20.910' W
Helispot	H-93		36° 06.735' N	121° 21.142' W
Helispot	H-94		36° 06.695' N	121° 21.860' W



-  Drop Point
-  Helispot
-  Uncontrolled Fire Edge
-  Contained Line
-  Local Road
-  4WD

