

* CORRECTED *

INCIDENT ACTION PLAN

APPLE

CARRU096640

PNNCU3 (1502)



Wednesday

OPERATIONAL PERIOD

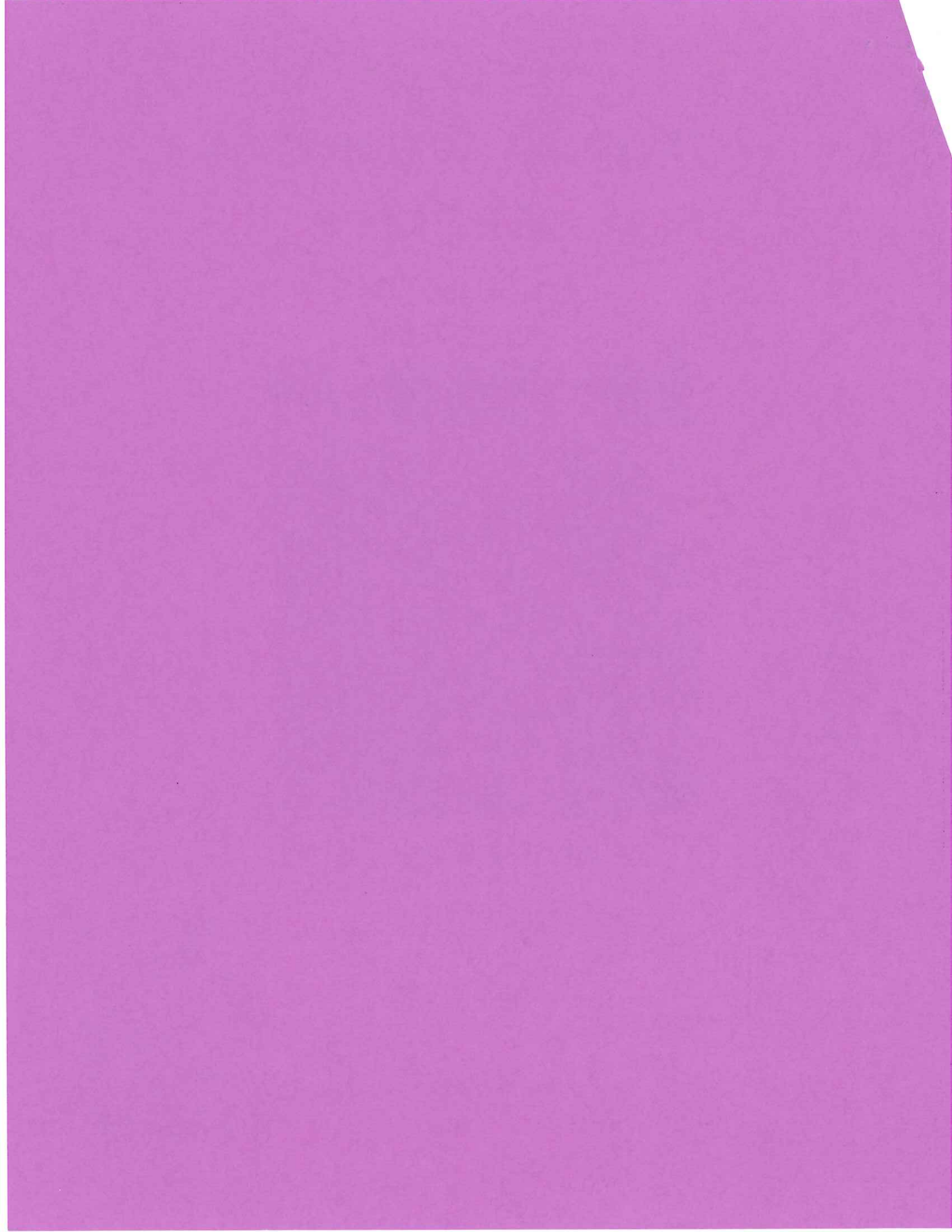
8/12/2020 0700

to

8/12/2020 1900

0700 - Operational Briefing at ICP and Yucaipa
1900 - Planning Meeting





INCIDENT OBJECTIVES (ICS 202)

1. Incident Name: <p style="text-align: center;">Apple</p>	2. Operational Period: <table style="width: 100%; border: none;"> <tr> <td style="border: none;">Date From:</td> <td style="border: none;">8/12/2020</td> <td style="border: none;">Date To:</td> <td style="border: none;">8/12/2020</td> </tr> <tr> <td style="border: none;">Time From:</td> <td style="border: none;">0700</td> <td style="border: none;">Time To:</td> <td style="border: none;">1900</td> </tr> </table>	Date From:	8/12/2020	Date To:	8/12/2020	Time From:	0700	Time To:	1900
Date From:	8/12/2020	Date To:	8/12/2020						
Time From:	0700	Time To:	1900						

3. Objective(s):

Strategic Framework:

Implement a full suppression strategy on the Apple Fire. Values at risk include human safety, private property, critical infrastructure, associated improvements and wilderness values. Apply tactics that offer the highest probability of success.

Leader's Intent:

Provide the highest level of customer service to all involved with, or impacted by the Apple Fire. Ensure transparent, timely and accurate communication at all levels of the incident. All incident assigned personnel should be prepared to take the appropriate actions regarding:

- Professional behavior, conduct and timely, effective communications.
- Personal safety and the safety of others, including driving slow, safe and defensively.
- Manage fatigue by taking breaks and maintaining work/ rest cycles.
- Minimize risk and limit exposure to COVID-19 by daily screening, minimizing large group settings, social distancing, wearing face coverings, hand washing and practicing Module of One Concept.

Management Objectives:

- Provide for firefighter and public safety through hazard recognition and application of the Risk Management Process.
- Provide critical infrastructure including but not limited to transmission and communication towers, water systems, natural gas, railroads and highways.
- Ensure resource allocation and mission are documented for cost apportionment.
- Minimize impact to aquatic and wildland scenic rivers by utilizing retardant avoidance.
- Reduce the impact to Sand to Snow Monument and San Gorgonio Wilderness values by utilizing Minimum Impact Suppression Tactics (MIST)
- Identify needs for and implement fire suppression damage repair work.

Control Objectives:

- Keep the fire North of the established control lines to protect the communities of Cherry Valley, Beaumont and Banning
- Keep the fire East of Oak Glen Road to protect the communities of Yucaipa, Oak Glen and Cherry Valley.
- Keep the fire South of Hwy 38 to limit extension into the San Gorgonio Wilderness and to protect the communities of Mountain Home, Forest Falls and Angeles Oaks.
- Keep the fire West of Hwy 62 and Morongo Valley to protect the communities of Morongo Valley, Desert Hot Springs and Joshua Tree National Park.

General Situational Awareness:

- Steep and rugged terrain, critically dry and receptive fuel beds, active area for fire history and drought stressed trees.
- In the COVID-19 environment, high density populations or large groups are particularly at risk. To help protect yourself, your family and to ensure all employees return home safely, make sure to practice social distancing.
- Enhanced hygiene (especially handwashing), PPE & monitoring practices limiting the infection rate of first responders.

5. Site Safety Plan Required? Yes No


Approved Site Safety Plan(s) Located at:

6. Incident Action Plan

- | | | | |
|---|--|--|--|
| <input checked="" type="checkbox"/> ICS 203 | <input checked="" type="checkbox"/> ICS 215A | <input type="checkbox"/> ICS 205 A | <input type="checkbox"/> |
| <input checked="" type="checkbox"/> ICS 204 | <input checked="" type="checkbox"/> ICS 220 | <input checked="" type="checkbox"/> Training Message | <input type="checkbox"/> |
| <input checked="" type="checkbox"/> ICS 205 | <input checked="" type="checkbox"/> Facility Maps | <input type="checkbox"/> Travel Map | <input type="checkbox"/> |
| <input checked="" type="checkbox"/> ICS 206 | <input checked="" type="checkbox"/> Weather Forecast | <input checked="" type="checkbox"/> Demob Plan | <input type="checkbox"/> County Health Message |
| <input checked="" type="checkbox"/> ICS 208 | <input checked="" type="checkbox"/> Fire Behavior | <input checked="" type="checkbox"/> Finance Message | <input checked="" type="checkbox"/> ICS 214 |

7. Prepared By:	Rick Leuck/ Dena Chavez (T)	Position/Title: PSC 1	Signature:
8. Approved by Incident Commander:	Nickie Johnny(T)	Signature:	

ORGANIZATION ASSIGNMENT LIST (ICS 203)

1. Incident Name: Apple		2. Operational Period: Date From: 8/12/2020 Time From: 0700		Date To: 8/12/2020 Time To: 1900	
3. Incident Commander(s) and Command Staff:			7. Operation Section:		
IC/UC's	T. Hopkins/ M. Minton/ N. Johnny(T)	Operations	D. Willis/ P. Russell/ P. Rebello(T) / M. Hanley(T)		
Deputy	C. Joseph	Deputy Operations	A. McBath/ J. Janssen		
Safety Officer	F. Espinoza/ D. Updike/ T. Irwin/ P. Leusch(T)/ T. Strickland	Night Ops			
Information Officer	M. Lindberg/ M. Theune(T)/ D. Wyatt(T)	Strategic Ops			
Liaison Officer	R. Ekman	Branch	I	T. Abel/ M. Gerwe(T)	
Human Resources	R. Voelkle	Division/Group	F	G. McGervey / ACOSTA	
		Division/Group	I	R. Torres	
		Division/Group			
4. Agency/Organization Representatives:			Division/Group		
Agency/Organization	Name	Division/Group			
CDCR	N. Patterson	Branch	III	M. Klimek/ J. Fallon(T)	
SO CAL EDISON	T. Whitman/ S. Brown	Division/Group	L/O	A. Pula	
RSO	T. Salas	Division/Group	R	J. Leutzinger	
CAL OES	R. Unkovich	Division/Group			
BDC Fire	R. Walls/ D. Munsey	Division/Group			
Morongo Fire	G. Yearsley	Branch	V	S. Prather	
Air Resource Advisor	A. Nick	Division/Group	T	N. Stanzak	
BIA	R. Ruiz	Division/Group	U	B. Tai	
CALFIRE AA	S. Littlefield	Division/Group	XY	R. Valles/ E. Lujan(T)	
USFS AA	M. Stamer	Division/Group			
USFS AREP	J. Rechsteiner	Division/Group			
		Division/Group			
		Branch	VII	B. Otterman/ C. Noyes BENNETT	
		Division/Group	A/Z	S. Miller	
		Division/Group	Morongo	C. Gnad	
5. Planning Section:			Division/Group		
Chief	G. Sanchez/ R. Leuck/ D. Chavez(T) R. Burnside PSC2(T)	Division/Group	Bluff	I. McBride	
Deputy	C. Carrera	Division/Group	Fence CHP	M. Jonsson	
Resource Unit	J. Ferguson/ J. Shaffer/ T. Rye	Division/Group	Road	N. Shew	
Situation Unit	T. Williamson/ J. Day/ D. Janssen	Division/Group			
Documentation Unit	P. Saba	Division/Group			
Demobilization Unit	I. Contreras/ K. Kutzke(T)	Division/Group			
GISS	C. Bass/ R. Kriha	Division/Group	BAER	T. Ellsworth	
FBAN	D. Burns/ L. Blake(T)	Division/Group			
IMET	R. Thompson	Division/Group			
Training Tech Spec	D. Panno	Air Operations Branch		Director:	Terry Harris
Lead READ	J. Donnell	Air Support Group Supervisor		K. McElfish	
ITSS	G. Fong/ R. Shellooe(T)	Air Tactical Group Supervisor			
6. Logistics Section			Helibase Manager J. Collins (Banning)		
Chief	K. Kumpe/ A. Tat(T)/ M. Ferguson/ B. Schurr/ W. Crews(T)	Helibase Manager		J. Czapinski (Redlands)	
Supply Unit	R. Browning/ M. Hernandez/ E. Simpson	8. Finance/Administration Section:			
Facilities Unit	J. Hodge	Chief	L. Lee/ A. Lee(T)/ J. Franklin		
Ground Support Unit	B. Clark	Time Unit	J. White/ A. DaSilva		
Communications Unit	K. Harper	Procurement Unit	M. Jeffries		
Medical Unit	C. Schilling/ S. Mohlenbrok	Comp/Claims Unit	E. Downing/ S. Baptista		
		Cost Unit	T. Monohan/ H. Horn		
		Equipment Time	D. York		
Prepared By: Name:	Rick Leuck/ Robert Burnside (T)	Position/Title:	PSC 2	Signature:	
ICS 203		Date/Time:	8/11/2020		2200



INCIDENT Weather Forecast



FORECAST NO: 9
 PREDICTION FOR: Day SHIFT
 SHIFT DATE: 8/12/20 (0700-1900)
 TIME AND DATE
 FORECAST ISSUED: 8/11/20 @ 2000

NAME OF FIRE: Apple
 UNIT: CalFire
 SIGNED:


 Richard Thompson
 Incident Meteorologist

WEATHER DISCUSSION: Warm and dry conditions will continue through the operational period. Humidity will drop into the teens and single digits today with poor to moderate recovery tonight. Ridgetop winds will remain southwesterly with typical diurnal winds at lower elevations.

Partly to mostly cloudy skies expected on Thursday with ridgetop sprinkles possible. For Friday through the weekend, very hot and dry conditions will develop.

WEATHER FORECAST:

WEATHER: Mostly clear.

TEMPERATURES:

Branches I & III:	
Valleys/Lower Slopes:	Max: 74-84. Min: 54-62.
Ridges/Upper Slopes:	Max: 64-74. Min: 46-54.
Branches V & VII:	
Valleys/Lower Slopes:	Max: 88-98. Min: 66-74.
Ridges/Upper Slopes:	Max: 78-88. Min: 62-70.

HUMIDITY:

Branches I & III:	
Valleys/Lower Slopes:	Min: 8-18%. Max: 30-45%.
Ridges/Upper Slopes:	Min: 12-22%. Max: 25-40%
Branches V & VII:	
Valleys/Lower Slopes:	Min: 8-18%. Max: 30-45%.
Ridges/Upper Slopes:	Min: 8-18%. Max: 20-35%

20 FT WINDS:

Branches I & III:	
Ridgetop:	0700-1100: Southwest 8-15 MPH Gust 20-30 MPH. 1100-2200: Southwest 6-12 MPH Gusts 15-25 MPH. 2200-0700: South-southwest 6-12 MPH Gust 15-25 MPH.
Slope/Valley:	0700-1200: Variable/upslope 3-6 MPH Gust 10 MPH. 1200-2000: Upvalley 6-12 MPH Gust 15-20 MPH 2000-0700: Downslope/downvalley 3-6 MPH Gust 10 MPH.
Branches V & VII:	
Ridgetop:	0700-1100: Southwest 5-10 MPH Gust 15 MPH. 1100-2200: Southwest 8-15 MPH Gust 20-25 MPH. 2200-0700: South-southwest 5-10 MPH Gust 15 MPH.
Slope/Valley:	0700-1200: Variable/upslope 4-8 MPH Gust 10 MPH. 1200-2000: Upvalley 6-12 MPH Gust 20-25 MPH 2000-0700: Downslope/downvalley 3-6 MPH Gust 10 MPH.

FIRE BEHAVIOR FORECAST

FORECAST NUMBER: 10	TYPE OF FIRE: Wild Fire
FIRE NAME: Apple	OPERATIONAL PERIOD: August 12, 2020 24hr
DATE ISSUED: 8/11/20	TIME ISSUED: 1900
UNIT: CA-RRU	SIGNED: _____ Typed/printed: /s/ Dennis Burns

INPUTS

WEATHER SUMMARY: Warm and Dry

Temps: Day Valleys 88-98 Ridges 64-74 Night Valleys 66-74 Ridges 46-54

RH: Day 8-18% Night 20-35%

Winds: Day Ridges SW 8-15 gusts to 20-25mph Night Ridges SW to S 5-10 gusts to 15mph

OUTPUTS

FIRE BEHAVIOR

GENERAL: Minimal forward fire progression is expected on all of the Branches. Expect mainly creeping and smoldering fire behavior. Some unburned interior islands may actively burn out with the dryer weather but they are not anticipated to be a threat to any of our lines. Fire whirls and dust devils are probable on the lower slopes, the flats and at intersecting drainages. Make sure lookouts have a good view of the fire. When the winds pick up in the morning and the sky begins to clear, expect fire activity to increase.

At night, expect the fire to remain active as the peak RH occurs in the early evening then drops again, early in the morning.

With the dry fuels, spotting will be problematic. It should be short range, less than 400ft and from rollout.

1000hr fuels are at 6%FM and are receptive to spots.

Probability of Ignition will be 90-100%.

If the fire escapes or you become involved with IA, expect Flame lengths 1-4 feet in the grass, 4-25 feet in the brush.

SPECIFIC:

Branch I: The fire is holding at the top of Yucaipa Ridge and no forward progression is expected. Any spotting would be from rollout but would back slowly into the Forest Falls drainage.

Branch III: Minimal fire progression is expected in the northeast corner. What fire there is on the Branch is in sparse fuels and shows little potential for spread during the shift. Pockets of manzanita will readily burn and will be a source of visible smoke. Rollout will be the primary source of spotting.

Branch V: No forward fire progression is expected. If the fire becomes established on the east side of Millard Canyon expect the fire to progress to the northeast. Interior islands from the burn operation will continue to actively burn and are a potential source for spot fires.

Branch VII: No forward progression expected along the south side of the Branch.

AIR OPERATIONS: No anticipated smoke impacts to air ops.

SAFETY

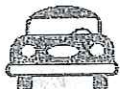
Most of our fire is situated on extremely steep slopes, assess your work area for rollout potential.

Although no forward progression is expected, do not become complacent there is still plenty of heat out there.

Health & Safety Message

Incident: Apple Fire CARRU096640	Date/Op Period: 8/12/2020 0700-1900
---	--

VEHICLE OPERATIONS:



As we travel to and from the incident, and through the communities, we need to remember, we are visitors here, with that said, drive the speed limits with courtesy in mind. Also, please monitor your speeds while on your divisions, roads are dusty and slippery in places with blind corners.

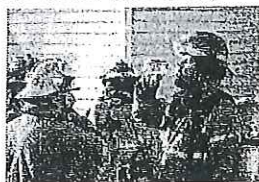
SPIKE CAMP: While spiked out we need to be cautious of all the same hazards we've been talking about for the last week, steep terrain, poor footing and also paying close attention to possible fire starts below your location. Remember, *IF IT'S PREDICTABLE ITS PREVENTABLE*. Additionally, sometimes we take it for granted that during quiet parts of the fire we're out of danger, it's not over until it's over. Remember LCES. Also, COVID 19 does not discriminate, do what you can to guard yourself against infection while spiked out.



FIRE SUPPRESSION REPAIR AND HEAVY EQUIPMENT OPERATIONS: As fire suppression repairs are in full swing, it's important to be aware of heavy equipment operations working near you. Masticators, and chippers require a 300' clearance to limit the possibility of debris injuring a person. Full PPE's are required with emphasis on good eye protection.

HYDRATION AND HEAT RELATED ILLNESSES;

While on your assignment be sure to thirsty now, you've waited too long. your operational period and utilize Monitor yourself and your crews for



hydrate all day. If you're Pack plenty of water for electrolytes in your water. signs of dehydration.

HAZARD TREES: Hazard tree safety guidelines on page 22 in the IRPG, post lookouts in hazard tree areas, ensure good communications, and know how to activate your emergency evacuation plan if something goes wrong.

Prepared by: John Bates SOF1 (t)

Approved by: Freddie Espinoza SOF1

L. Lookouts C. Communications E. Escape Routes S. Safety Zones

INCIDENT SAFETY ANALYSIS 215a

APPLE - Wednesday 08.12.2020

8. Location	9. Hazard	6. Control or Abatement Action (Engineering, Administrative, PPE, Avoidance, Education, etc)
All Divisions	Driving & Traffic	<ul style="list-style-type: none"> ~ Practice "Defensive Driving" techniques traveling on all roads and city streets. ~ Use spotters when backing. ~ Follow Driving LCES (Lights, Chock blocks, Emergency brake, Seat belts. ~ Always use headlights. ~ Observe posted speed limits. ~ Use the 3 second rule for following distance when driving. ~ Use chock blocks, turn wheels into hill.
Branch I, III,	Spike Camp	<ul style="list-style-type: none"> ~ Keep situational awareness and LCES as your focus. ~ Review medical evacuation plans and have a plan A and B in place. ~ Ensure communications are in place. ~ Review and observe "Line Spike" considerations IRPG (pg 95-96). ~ Establish work stopping times and rally up the crews back to spike camp to minimize risks at night.
Branch V, VII	Fire Suppression Repair	<ul style="list-style-type: none"> ~ Ensure communications are established with operators. ~ Use hand signals if other communications are unavailable. ~ Maintain a 50'-100' exclusion area around equipment and increase it to 1 1/2 times tree height when in timber. ~ When using masticators and feller bunchers, maintain 300' exclusion area to the front and 100' to the rear of operating equipment. ~ Use a spotter when backing. ~ Avoid working below heavy equipment.
All Divisions	Helicopter Operations	<ul style="list-style-type: none"> ~ Stay clear of all bucket drops when suppression actions are in place and allow 1 minute prior to re-entry. ~ Monitor A-G communications. ~ Follow aviation safety guidelines in IRPG (pg 45-56) and IHOG. ~ Ensure all passengers receive a Helicopter Passenger Briefing
Branch I, III, V	Hazard Trees	<ul style="list-style-type: none"> ~ Follow "Hazard Tree Safety" guidelines, IRPG (pg 22). ~ Post lookouts, or use a spotter in mop-up areas with personnel. ~ Don't park vehicles or take breaks in high concentrations of hazard trees. ~ Establish trigger points for disengagement during high wind events. ~ Remember that the hazard zone extends a minimum of 2 1/2 tree heights.
Branch I, III, V	Indirect Fireline	<ul style="list-style-type: none"> ~ Post lookouts, identify escape routes and safety zones (IRPG pg. 6). ~ Review "Strategy/Indirect Attack" IRPG (pg. 83).
All Divisions	Covid Exposure	<ul style="list-style-type: none"> ~ Maintain 6' social distancing, wear your mask, proper hand washing

ASSIGNMENT LIST (ICS 204 WF)

CONTROLLED UNCLASSIFIED
INFORMATION/BASIC

1. Incident Name: <p style="text-align: center; font-size: 1.2em;">Apple</p>	2. Operational Period: Date From: 08/12/20 Date To: 08/12/20 Time From: 0700 Time To: 1900	3. Branch Division <p style="text-align: center; font-size: 1.5em;">I F</p> <p style="text-align: center;">Page 1 of 2 Foxtrot</p>
--	---	---

4. Operations Personnel:	
Operations Section Chief: D. Willis/ P. Russell/ P. Rebello(T) / M. Hanley(T)	Night Ops:
Branch Director: T. Abel/ M. Gerwe(T)	Branch Safety: John Strickland
Division/Group Supervisor: G. McGervey / ACOSTA	Air Attack:

5. Resources Assigned:						Hours	Reporting Location
Resource Identifier	ALS	LWD	Leader	Personnel	Request #		
CRW1 FULTON IHC		8/12	Acosta, Josh	19	C-7	0700-1900	Yucaipa
CRW1 EL CARISO IHC		8/14	Kott	19	C-20	0700-1900	H-3 Spike
STC CNF 6632C		8/14	Naylor, Danny	27	E-97	0700-1900	Yucaipa
ENG3 BDF 35		8/15	Vergne, Brian	5	E-50040	0700-1900	Yucaipa
ENG3 BDF 312		8/13	Harkins, Andrew	5	E-137	0700-1900	Yucaipa
ENG3 TMU 342		8/17	Etheridge, Brian	5	E-50035	0700-1900	Yucaipa
DOZ BDF 3		8/15	Baxter, Brian	5	E-50108	0700-1900	Yucaipa
W/T2 PVT E-36 B&C ORDUNO			Orduno	2	E-36	0700-1900	Yucaipa
W/T2 PVT E-37 - JIM FOLEY			Drew	2	E-37	0700-1900	Yucaipa
W/T PVT E-50131 BAY AREA		8/19	Barrett, Mike	1	E-50131	0700-1900	Yucaipa
W/T1 PVT E-227 BRENDA'S			Cleer	2	E-227	0700-1900	Yucaipa
W/T 139		8/21	Bethel, R.D.	2	E-50139	0700-1900	Yucaipa
W/T PVT E-50140 COOL MULE INC		8/17	Pope, Norm	1	E-50140	0700-1900	Yucaipa
W/T IMP 2843		8/21	Robles, Oscar	2	E-50135	0700-1900	Yucaipa
W/T RVC 30		8/15	Clark, Wayne	2	E-88	0700-1900	Yucaipa
CHIP PVT E-50156 TREE GUYS		8/21	Rose, Joel	2	E-50156	0700-1900	Yucaipa
EXC PVT E-50181 MCKELLAR			Toller, Harley	1	E-50181	0700-1900	Yucaipa
MAST PVT E 50184			STRONG, BRET	2	E-50184	0700-1900	YUCAIPA

6. Work Assignments:
Continue to construct and improve direct control line. Extinguish hotspots where needed from Wilshire Peak to Division I break. Hold and mop up direct line from Wilshire Peak to Oak Glen community. Continue to remove equipment and begin Fire Suppression Repair on dozer and hand lines around the Oak Glen communities and on Yucaipa Ridge.

GRAD PVT E 50187 **GREWEN, GARY** **2 E-50187 0700-1900 YUCAIPA**

7. Special Instructions:
Use the repeater which gives you the best reception.
READ/REAF (ARCH) Kellogg is operating throughout Branch I.

8. Communications							
Name	Ch	Function	Rx Freq	Rx Tone	Tx Freq	Tx Tone	Notes
NIFC C1	1	COMMAND	170.9750	T1 - 110.9	168.7000	T1 - 110.9	Linked (Morton Lookout)
CDF T25	7	TACTICAL	159.2775	192.8 (T16)	159.2775	192.8 (T16)	
A/G TACTICAL	14	A/G TACTICAL	173.0875		173.0875	110.9 (T1)	
CALCORD	15	MEDICAL	156.0750N		156.0750N	156.7 (T6)	
AIRGUARD	16	GUARD V8	168.6250		168.6250	110.9 (T1)	Emergency Ground to Air ONLY

9. Prepared by: Name: Ryan Villarino	RESL	Signature:
ICS 204	Date/Time: 8/11/2020 2200	Personnel Count: 94

ASSIGNMENT LIST (ICS 204 WF)

CONTROLLED UNCLASSIFIED
INFORMATION//BASIC

1. Incident Name: <p style="text-align: center; font-size: 1.2em;">Apple</p>	2. Operational Period: Date From: 08/12/20 Date To: 08/12/20 Time From: 0700 Time To: 1900	3. Branch Division <p style="text-align: center; font-size: 1.5em;">I F</p> <p style="text-align: center;">Page 2 of 2 Foxtrot</p>
--	---	---

4. Operations Personnel:	
Operations Section Chief: D. Willis/ P. Russell/ P. Rebello(T) / M. Hanley(T)	Night Ops:
Branch Director: T. Abel/ M. Gerwe(T)	Branch Safety: John Strickland
Division/Group Supervisor: G. McGervey / ACOSTA	Air Attack:

5. Resources Assigned:							
Resource Identifier	ALS	LWD	Leader	Personnel	Request #	Hours	Reporting Location
EXC PVT E-50185 SHANNON			Shannon, Bill	2	E-50185	0700-1900	Yucaipa
EXC PVT E-50186 D4M			Riddell, Douglas	1	O-50186	0700-1900	Yucaipa
GRD PVT E-50187 GREWEN			Grewen, Gary	1	E-50187	0700-1900	Yucaipa
HEQB BETHEL		8/17	Bethel, Ritter	1	O-50268	0700-1900	Yucaipa
HEQB(T) LUPARELLO		8/18	Luparello, Eddy	1	O-50220	0700-1900	Yucaipa
REMS ORANGE		8/16	Mathias, J.	4	O-181	0700-1900	Yucaipa
READ HEALY		8/15	Healy, James	1	O-79	0700-1900	Yucaipa
READ SUREK		8/15	Surek, Evan James	1	O-50002	0700-1900	Yucaipa
READ WILLIAMS → BEAR		8/20	Williams, Emma	1	O-50228	0700-1900	Yucaipa
READ ASHCRAFT		8/21	Ashcraft, Scott	1	O-50249	0700-1900	Yucaipa
READ BAIRD		8/20	Baird, Morgan	1	O-50247	0700-1900	Yucaipa
REAF KELLOGG		8/14	Kellogg, Jared	1	O-50274	0700-1900	Yucaipa
FEMP POLLOCK		8/16	Pollock, Larry	1	O-143	0700-1900	H3 Spike
FEMP GILMAN JR		8/14	Gilman Jr, Mark	1	O-65	0700-1900	H3 Spike
FEMP MEKETARIN		8/17	Meketarin, Chad	1	O-263	0700-1900	Yucaipa
FEMP KERFOOT		8/17	Kerfoot, Errick	1	O-238	0700-1900	Yucaipa
CHIP PVT E50157 CECIL FM FENCING		8/21	SANDERS, WILLIAM	2	E-50157	0700-1900	YUCAIPA
CREW 2 IA TAMANA CHIEFS		8/12	TROXEL, TIM	20	C-26	0700-1900	YUCAIPA

6. Work Assignments:

Continue to construct and improve direct control line. Extinguish hotspots where needed from Wilshire Peak to Division I break. Hold and mop up direct line from Wilshire Peak to Oak Glen community. Continue to remove equipment and begin Fire Suppression Repair on dozer and hand lines around the Oak Glen communities and on Yucaipa Ridge.

CRWZ IA YUKON	8/12	MORE	21	C-26	0700-1900	YUCAIPA
REAF DONNELL	8/18	DONNELL, JULIE	1	O-50217	0700-1900	YUCAIPA

7. Special Instructions:

Use the repeater which gives you the best reception.

READ/REAF (ARCH) Kellogg is operating throughout Branch I.

8. Communications

Name	Ch	Function	Rx Freq	Rx Tone	Tx Freq	Tx Tone	Notes
NIFC C1	1	COMMAND	170.9750	T1 - 110.9	168.7000	T1 - 110.9	Linked (Morton Lookout)
CDF T25	7	TACTICAL	159.2775	192.8 (T16)	159.2775	192.8 (T16)	
A/G TACTICAL	14	A/G TACTICAL	173.0875		173.0875	110.9 (T1)	
CALCORD	15	MEDICAL	156.0750N		156.0750N	156.7 (T6)	
AIRGUARD	16	GUARD V8	168.6250		168.6250	110.9 (T1)	Emergency Ground to Air ONLY

9. Prepared by: Name: Ryan Villarino RESL

Signature:

ICS 204 Date/Time: 8/11/2020 2200 Personnel Count: 17

ASSIGNMENT LIST (ICS 204 WF)

CONTROLLED UNCLASSIFIED
INFORMATION//BASIC

1. Incident Name: <p style="text-align: center; font-size: 1.2em;">Apple</p>	2. Operational Period: Date From: 08/12/20 Date To: 08/12/20 Time From: 0700 Time To: 1900	3. Branch Division <p style="text-align: center; font-size: 1.5em;">III R</p> <p style="text-align: center;">Page 1 of 1 Romeo</p>
--	---	---

4. Operations Personnel:	
Operations Section Chief: D. Willis/ P. Russell/ P. Rebello(T) / M. Hanley(T)	Night Ops:
Branch Director: M. Klimek/ J. Fallon(T)	Branch Safety: Sandy Fast
Division/Group Supervisor: J. Leutzinger	Air Attack:

5. Resources Assigned:		ALS	LWD	Leader	Personnel	Request #	Hours	Reporting Location
Resource Identifier								
WFM SEQUOIA 20			8/21	Woodyard, Aaron	8	O-50278	0700-1900	Romeo/Spike
WFM MARBLE MOUNTAIN			8/21	Buchter, Paul	10	O-50279	0700-1900	Romeo Spike
FOBS(T) SUTHERLAND			8/16	Sutherland, Joshua Joel	1	O-50150	0700-1900	Romeo Spike
FOBS SERRES			8/16	Serres, Heath L	1	O-50062	0700-1900	Romeo Spike
FEMP INMAN			8/15	Inman, Christopher Carl	1	O-72	0700-1900	Romeo Spike
FEMP GRAFTON			8/18	Grafton, Christopher M	1	O-237	0700-1900	Romeo Spike
FEMP CAMPBELL			8/18	Campbell, Brian	1	O-251	0700-1900	Romeo Spike
FEMP ROE			8/17	Roe, Jeffrey	1	O-257	0700-1900	Romeo Spike
READ RANGITSCH			8/19	Rangitsch, Jeff	1	O-50223	0700-1900	Romeo Spike
<i>REMS HAMBEL WEST COVINA</i>			<i>8/18</i>	<i>HAMBEL, MICHAEL</i>	<i>1</i>	<i>O-267</i>	<i>0700-1900</i>	<i>ROMEO SPIKE</i>
<i>REMS WEST COVINA</i>			<i>8/18</i>					

6. Work Assignments:
Construct direct control line. Hotspot and cold trail line from Wilshire Peak east.

7. Special Instructions:
Use the repeater which gives you the best reception.
READ Rangitsch will be working throughout Branch III

8. Communications							
Name	Ch	Function	Rx Freq	Rx Tone	Tx Freq	Tx Tone	Notes
NIFC C1	1	COMMAND	170.9750	T1 - 110.9	168.7000	T1 - 110.9	Linked (Morton Lookout)
VFIRE 26	12	TACTICAL	154.3025	156.7 (T6)	154.3025N	156.7 (T6)	
A/G TACTICAL	14	A/G TACTICAL	173.0875		173.0875	110.9 (T1)	
CALCORD	15	MEDICAL	156.0750N		156.0750N	156.7 (T6)	
AIRGUARD	16	GUARD V8	168.6250		168.6250	110.9 (T1)	Emergency Ground to Air ONLY

9. Prepared by: Name: Ryan Villarino	RESL	Signature:
ICS 204	Date/Time: 8/11/2020 2200	Personnel Count: 25

ASSIGNMENT LIST (ICS 204 WF)

CONTROLLED UNCLASSIFIED
INFORMATION//BASIC

1. Incident Name: <p style="text-align: center; font-size: 1.2em;">Apple</p>	2. Operational Period: Date From: 08/12/20 Date To: 08/12/20 Time From: 0700 Time To: 1900	3. Branch Division <p style="text-align: center; font-size: 1.5em;">V U</p> <p style="text-align: center;">Page 1 of 1 Uniform</p>
--	---	---

4. Operations Personnel:	
Operations Section Chief: D. Willis/ P. Russell/ P. Rebello(T) / M. Hanley(T)	Night Ops:
Branch Director: S. Prather	Branch Safety: Joe Labak
Division/Group Supervisor: B. Tai	Air Attack:

5. Resources Assigned:							
Resource Identifier	ALS	LWD	Leader	Personnel	Request #	Hours	Reporting Location
CRW1 KRN TEHACHAPI		8/14	Battiston, Alex	23	C-18	0700-1900	ICP
CRW1 SBC CREW 11		8/14	Gilliam, Tyler	18	C-17	0700-1900	ICP
STC SNF 5600C		8/12	Seymour	21	E-98	0700-1900	ICP
W/T2 PVT E-81 - DOC'S		8/20	Vaine	2	E-81	0700-1900	ICP
W/T2 PVT E-83 - DUST		8/14	Molina	2	E-83	0700-1900	ICP
FOBS MOTTRAM		8/18	Mottram, Chase R	1	O-315	0700-1900	ICP
FOBS SOUDER		8/18	Souder, Ryan	1	O-314	0700-1900	ICP
REMS MONTEREY PARK		8/17	Maloof, Adam	4	O-269	0700-1900	ICP
EMPF KUTZ		8/19	Kutz, Dustin	1	O-248	0700-1900	ICP
FEMT CHAVEZ		8/18	Chavez, Emmanuel	1	O-258	0700-1900	ICP
CRW2 PACIFIC OASIS		8/21	DOODS, LELAND	20	C-50030	0700-1900	ICP

6. Work Assignments:
 Task - Construct direct and indirect fireline utilizing cold trail tactics where appropriate from Snow Peak to DP-55.
 Purpose - To limit fire spread and protect values at risk.
 End State - Fire footprint is minimized and values at risk are not impacted.

7. Special Instructions:
 Wilderness and Roadless: NO dozers allowed. Chainsaws, helispots, retardant and handlines allowed.
 Use the repeater which gives you the best reception.

8. Communications							
Name	Ch	Function	Rx Freq	Rx Tone	Tx Freq	Tx Tone	Notes
NIFC C1	1	COMMAND	170.9750	T1 - 110.9	168.7000	T1 - 110.9	Linked (Morton Lookout)
CDF T26	8	TACTICAL	159.2925	192.8 (T16)	159.2925	192.8 (T16)	
A/G TACTICAL	14	A/G TACTICAL	173.0875		173.0875	110.9 (T1)	
CALCORD	15	MEDICAL	156.0750N		156.0750N	156.7 (T6)	
AIRGUARD	16	GUARD V8	168.6250		168.6250	110.9 (T1)	Emergency Ground to Air ONLY

9. Prepared by: Name: Ryan Villarino	RESL	Signature:	Personnel Count: 74
---	------	------------	---------------------

ASSIGNMENT LIST (ICS 204 WF)

CONTROLLED UNCLASSIFIED
INFORMATION//BASIC

1. Incident Name: <p style="text-align: center; font-size: 1.2em;">Apple</p>	2. Operational Period: Date From: 08/12/20 Date To: 08/12/20 Time From: 0700 Time To: 1900	3. Branch Division <p style="text-align: center; font-size: 1.2em;">VII A/Z</p> <p style="text-align: center;">Page 1 of 1 Alpha/Zulu</p>
--	---	--

4. Operations Personnel:		Night Ops:
Operations Section Chief: D. Willis/ P. Russell/ P. Rebello(T) / M. Hanley(T)	Branch Director: B. Otterman/ C. Noyes BENNETT	Branch Safety: Miles Shuler
Division/Group Supervisor: S. Miller	Air Attack:	

5. Resources Assigned:							
Resource Identifier	ALS	LWD	Leader	Personnel	Request #	Hours	Reporting Location
T/F APPLE 7		8/13	Otterman, Bill	11	O-1	0700-1900	DP-25
READ(T) BROWN			BROWN, KAYIA	1	0-50295	0700-1900	
READ SAIZ			SAIZ, JUSTIN	1	0-80	0700-1900	
REAF COLE			COLE, TARA	1	0-50246	0700-1900	
REAF GRAVER			GRAVER, NECK	1	0-50273	0700-1900	

6. Work Assignments:
 Task - Continue Tactical Patrol within the divisions. Extinguish all smokes found around structures.
 Purpose - To keep fire within current footprint to prevent fire growth.
 End State - Fire remains in current footprint with no additional growth.

7. Special Instructions:
 Use the repeater which gives you the best reception.

8. Communications							
Name	Ch	Function	Rx Freq	Rx Tone	Tx Freq	Tx Tone	Notes
NIFC C1	1	COMMAND	170.9750	T1 - 110.9	168.7000	T1 - 110.9	Linked (Morton Lookout)
R5 T6	10	TACTICAL	168.2375N	110.9 (T1)	168.2375N	110.9 (T1)	
A/G TACTICAL	14	A/G TACTICAL	173.0875		173.0875	110.9 (T1)	
CALCORD	15	MEDICAL	156.0750N		156.0750N	156.7 (T6)	
AIRGUARD	16	GUARD V8	168.6250		168.6250	110.9 (T1)	Emergency Ground to Air ONLY

9. Prepared by: Name:	Ryan Villarino	RESL	Signature:
ICS 204	Date/Time: 8/11/2020 2200	Personnel Count: 0	

ASSIGNMENT LIST (ICS 204 WF)

CONTROLLED UNCLASSIFIED
INFORMATION/BASIC

1. Incident Name: <p style="text-align: center; font-size: 1.2em;">Apple</p>		2. Operational Period: Date From: 08/12/20 Date To: 08/12/20 Time From: 0700 Time To: 1900				3. Branch Division <p style="text-align: center; font-size: 1.2em;">VII Morongo</p>	
4. Operations Personnel:					Page 1 of 1		
Operations Section Chief: D. Willis/ P. Russell/ P. Rebello(T) / M. Hanley(T)			Night Ops:				
Branch Director: B. Otterman / C. Noyes BENNETT			Branch Safety: Miles Shuler				
Division/Group Supervisor: C. Gnad			Air Attack:				
5. Resources Assigned:							
Resource Identifier	ALS	LWD	Leader	Personnel	Request #	Hours	Reporting Location
STC RRU 9311C			Bryant, William K	18	E-147	0700-1900	DP-42
STC RRU 9310C		8/14	Burrow, Jeff	18	E-132	0700-1900	DP-42
DOZ PVT E-66 WEAVER AAX01343		8/13		2	E-66	0700-1900	DP-42
DOZ PVT E-67 WEAVER WCBOO2		8/14		2	E-67	0700-1900	DP-42
DOZ PVT E-221 GILL CATTLE		8/15	Gill	2	E-221	0700-1900	DP-42
DOZ PVT E-314 ARIAS			Francis, Ryan	1	E-314	0700-1900	DP-42
DOZ PVT E-318 JOHNSON			Johnson	1	E-318 7	0700-1900	DP-42
EXC PVT E-307 ARIAS			Arias, Louie	1	E-307	0700-1900	DP-42
EXC PVT E-309 KIRKLAND			Kirkland, Shane	2	E-309	0700-1900	DP-42
EXC PVT E-319 WEAVER <i>DMAB</i>			Weaver, Mark	1	E-319	0700-1900	DP-42
EXC PVT E-308 WEAVER			Weaver	1	E-308	0700-1900	DP-42
HEQB PETERSON			Peterson, R.	1	O-169	0700-1900	DP-42
HEQB(T) BENNER		8/6	Benner, Nathan	1	O-168	0700-1900	DP-42
HEQB WATNER		8/16	Watner, Mike	1	O-171	0700-1900	DP-42
HEQB(T) SCHEID		8/22	Scheid, James	1	O-50306	0700-1900	DP-42
FERS ERICKSON		8/19	Erickson, Dave	1	O-364	0700-1900	DP-42
FEMP VAN RENSELAAR		8/17	Van Renselaar, Erik	1	O-250	0700-1900	DP-42
FEMP ARANA		8/17	Arana, Luis	1	O-239	0700-1900	DP-42
6. Work Assignments: Implement approved Suppression Repair Procedures.							
7. Special Instructions: **Use the repeater which gives you the best reception.** <i>9310C OFF THE LINE @ 1600 FOR EXCESS BY 1700</i>							
8. Communications							
Name	Ch	Function	Rx Freq	Rx Tone	Tx Freq	Tx Tone	Notes
NIFC C1	1	COMMAND	170.9750	T1 - 110.9	168.7000	T1 - 110.9	Linked (Morton Lookout)
CDF T27	9	TACTICAL	159.3075	192.8 (T16)	159.3075	192.8 (T16)	Suppression Repair
A/G TACTICAL	14	A/G TACTICAL	173.0875		173.0875	110.9 (T1)	
CALCORD	15	MEDICAL	156.0750N		156.0750N	156.7 (T6)	
AIRGUARD	16	GUARD V8	168.6250		168.6250	110.9 (T1)	Emergency Ground to Air ONLY
9. Prepared by: Name:		Ryan Villarino		RESL		Signature: <i>R. Villarino</i>	
ICS 204		Date/Time: 8/11/2020 2200				Personnel Count: 55	

ASSIGNMENT LIST (ICS 204 WF)

CONTROLLED UNCLASSIFIED
INFORMATION/BASIC

1. Incident Name: <p style="text-align: center;">Apple</p>	2. Operational Period: Date From: 08/12/20 Date To: 08/12/20 Time From: 0700 Time To: 1900	3. Branch Group <p style="text-align: center;">VII BAER</p>
---	---	---

Page 1 of 1

4. Operations Personnel:		Night Ops:
Operations Section Chief: D. Willis/ P. Russell/ P. Rebello(T) / M. Hanley(T)		
Branch Director: B. Otterman/ C. Noyes	Branch Safety: Miles Shuler	
Division/Group Supervisor: T. Ellsworth	Air Attack:	

5. Resources Assigned:							
Resource Identifier	ALS	LWD	Leader	Personnel	Request #	Hours	Reporting Location
BAER KVOMME			Kvomme, Curtis	1	O-50313	0700-1900	ICP
BAER FUDGE			Fudge, Emily	1	O-50314	0700-1900	ICP
BAES TAYLOR			Taylor, Robert	1	O-50316	0700-1900	ICP
THSP MENDOZA			Mendoza, Angelica	1	O-50319	0700-1900	ICP
READ WILLIAMS FM DIV F			WILLIAMS, EMMA	1	O-50228	0700-1900	ICP

6. Work Assignments: Conduct BAER assessment.

7. Special Instructions: **Use the repeater which gives you the best reception.**

8. Communications							
Name	Ch	Function	Rx Freq	Rx Tone	Tx Freq	Tx Tone	Notes
NIFC C1	1	COMMAND	170.9750	T1 - 110.9	168.7000	T1 - 110.9	Linked (Morton Lookout)
CDF T27	9	TACTICAL	159.3075	192.8 (T16)	159.3075	192.8 (T16)	Suppression Repair
A/G TACTICAL	14	A/G TACTICAL	173.0875		173.0875	110.9 (T1)	
CALCORD	15	MEDICAL	156.0750N		156.0750N	156.7 (T6)	
AIRGUARD	16	GUARD V8	168.6250		168.6250	110.9 (T1)	Emergency Ground to Air ONLY

9. Prepared by: Name: Ryan Villarino	RESL
Signature:	Personnel Count: 4
ICS 204	Date/Time: 8/11/2020 2200

AIR OPERATIONS SUMMARY
ICS 220

Prepared By: **Terry Harris**
AOBD

Prepared Date: **8/11/2020**

Prepared Time: **1600**

1. INCIDENT NAME: Apple	2. OPS PERIOD DATE: 08-12-2020	START TIME: Day 0730	END TIME: Day 2000	SUNRISE: 0608	SUNSET: 1937
--------------------------------	--	--------------------------------	------------------------------	-------------------------	------------------------

3. REMARKS (Safety Notes, Hazards, Air Operations Special Equipment, etc.): Track all dipsite locations/number of dips/gallons taken. Track all drop locations/number of drops/gallons dropped. All GPS data to be collected in DEGREES, DECIMAL MINUTES format.
AVOID Aerial Application of Retardant/Foam/Agent within 300' of Waterways, Bodies of Water, etc. If Retardant/Foam/Agent is dropped within these areas immediately notify the AOBD and provide the following information: Lat/Long, estimated number of gallons and a map detailing the area.
 Fly with Transponder 1255.

4. Helibase Information:
Name: Redlands Airport
Banning Airport

5. TFR's:
Request #: 0/0121
Altitude: 0/0121
NOTAMS: 0/0121
Frequency: 119.175
http://tfr.faa.gov/tfr2/list.html

6. PERSONNEL	NAME	PHONE #	7. FREQUENCIES				TX	TONE	RX	TONE	AM/FM	8. MEDIVAC SHIP INFORMATION	
			A-G Command	A-G TAC	DECK (KBNG)	BRIEFING						DECK (RED)	TOLC
AOBD	Terry Harris	936-366-4239										Refer to Medical Plan	
ASGS	Kelvin McElfish	909-907-2677	A-G Command	171.9125	110.9	171.9125		FM					
ASGS	Jeremy Czapinski	619-818-2735	A-G TAC	173.0875	110.9	173.0875		FM					
HEB (Banning)	Jarrod Collins	858-353-6261	DECK (KBNG)	163.1000									
HEB (Redlands)	Gerry Granados	323-215-5053	BRIEFING	123.7750				AM				Or secondary Rotor Wing	
HEB (t)	Jael Constantino	619-536-3480	DECK (RED)	168.350									
			TOLC	123.025									
ATGS 12	Doug Ross	951-288-5372	AIR TACTICS	165.9875				FM					
ATGS 52	Derrick Wheeler	530-355-3274	AIR GUARD	168.6250	110.9	168.6250		FM					
			BDF Admin Rep	164.1375	103.5	172.2250	103.5	FM				ATGS FF/AC REQUEST	

HELICOPTERS

FAA N#	T	MAKE/ MODEL	BASE	START	AVAIL	REMARKS	FAA N#	T	MAKE/MODEL	BASE	START	AVAIL	REMARKS
531	2	Bell 205 ++	KBNG	1900	1930	EU (NIGHT)	4PJ	1	UH60	RED	0700	0730	EU
9122Z	2	Bell 212	KBNG	0700	0730	EU	9CU	1	CH47	RED	0700	0730	EU
3PA	2	Bell 212	KBNG	0700	0730	CWN	5CH	1	BV207	RED	0700	0730	EU
538	2	Bell 205++	KBNG	0700	0730	EU				RED			WT 222CNF
0HT	1	S-64	KBNG	0700	0730	EU				RED			E7816
3HT	1	S-64	KBNG	0700	0730	EU							
839PA	3	ASTAR	KBNG	0700	0730	EU (HELCO)							

[Handwritten Signature]

535	3	BELL 407	KNGB	0700	0730	EU							
555AS	3	Bell 407	KBNG	0700	0730	EU (HELCO)							
534	2	Bell 205++	KBNG	0700	0730	EU							
520	2	BELL 205++	KNGB	0700	0730	EU							
						E-21 Dust Buster							
						E3113							

FIXED WING

FAA N#	T	MAKE/ MODEL	BASE	START	AVAIL	REMARKS	FAA N#	T	MAKE/MODEL	BASE	START	AVAIL	REMARKS
AA-12		AERO COMM	SBD	0730	0800	ATGS							
AA-52		AERO COMM	SBD	0730	0800	ATGS							

INCIDENT RADIO COMMUNICATIONS PLAN

Incident Name
Apple Fire
 UNCLASSIFIED INFORMATION // BASIC

CONTROLLED

Date/Time Prepared
 8/11/20 1845

Operational Period Date/Time
 8/12/20 0700 TO 1900

Function	Channel Name/Trunked Radio System Talkgroup	Assignment	RX Freq	RX Tone/NAC	TX Freq	Tx Tone/NAC	Mode A, D or M	Remarks
1	COMMAND	All Divisions	170.9750	110.9 T1	168.7000	110.9 T1	A	Linked (Morton Lookout)
2	COMMAND	All Divisions	170.0125	110.9 T1	165.2500	110.9 T1	A	Linked (Snow Peak)
3	COMMAND	All Divisions	173.0375	110.9 T1	167.3250	110.9 T1	A	Linked (Black Mt. Lookout)
4	COMMAND	All Divisions	171.0875	110.9 T1	164.0125	110.9 T1	A	Linked (Twin Sisters)
5	COMMAND	All Divisions	170.0000	110.9 T1	166.6750	110.9 T1	A	Linked (Rock)
6	TACTICAL		159.3450	192.8 T16	159.3450	192.8 T16	A	
7	TACTICAL	DIV, F	159.2775	192.8 T16	159.2775	192.8 T16	A	
8	TACTICAL	DIV, U	159.2925	192.8 T16	159.2925	192.8 T16	A	
9	TACTICAL	Supp Repair	159.3075	192.8 T16	159.3075	192.8 T16	A	
10	TACTICAL	DIV, A/Z	168.2375	110.9 T1	168.2375	110.9 T1	A	
11	TACTICAL	DIV, X/Y	168.2500	110.9 T1	168.2500	110.9 T1	A	
12	TACTICAL	L/O, R, I, T	154.3025	156.7 T6	154.3025	156.7 T6	A	
13	Air to Ground	A/G COMMAND	171.9125		171.9125	110.9 T1	A	Div Sup and Above
14	Air to Ground	A/G TACTICAL	173.0875		173.0875	110.9 T1	A	
15	Medical	All Divisions	156.0750		156.0750	T6 156.7	A	
16	Air Guard	All Divisions	168.6250		168.6250	T1 110.9	A	Emergency Ground to Air ONLY

CONTROLLED UNCLASSIFIED INFORMATION // BASIC

Prepared By (Communications Unit)

Kevin Harper, COML 661-330-0209 APPLE COMMUNICATIONS 310-617-7553

County: San Bernardino/Riverside

SUPPRESSION REPAIR WORK GENERAL GUIDELINES

Project Name: **APPLE FIRE**

Division Location	Type of Work	Description of Repair Work
All Divisions	Backhaul Trash	Check for discarded waste, haul out and dispose. Remove all flagging and signage from suppression at the end of suppression repair activities.
All Divisions	Safety Zone Repair	Break up dozer piles over safety zone. Water bar as needed per specifications. Chip and pull back native material and vegetation, as needed.
All Divisions	Hand Line Repair	Pull back brush on all hand lines intersecting roads and trails, for 100' minimum or as appropriate to obscure view of hand lines. Water bar as appropriate.
Branch I Div. F Div. A Branch VII Div. Z Div. Y	Road Repair	All dirt roads used in the suppression effort should be graded as needed consistent with direction from SBNF Engineering. These actions may include: cleaning culverts and drains of debris and dirt, pulling back berms where dozers graded on roads and two-track roads, and chipping all cut vegetation along roads.
Branch I Div. F, A Branch VII Div. Z, Y, X	Dozer Line Repair	Pull back berms, re-contour and cover with cut vegetation or chips. Create waterbars where needed to specifications. Clean out all watercourses of all sediment, rocks, and vegetation debris as appropriate.
All Divisions	Hazard/Felled Tree Action	Flush cut/re-cut felled hazard tree stumps
Branch III Branch V	Wilderness Spike Camps	Follow MIST guidelines and the Wilderness READ direction
Branch I, III, VII	Retardant Reporting (FS only)	Report all retardant or foam applications within 300 feet of waterways or mapped avoidance areas to the Resource Advisors.

INCIDENT MESSAGES

TRAINING SPECIALIST

An Incident Training Specialist is assigned and will be performing the duties "virtually".

To assure proper documentation for your assignment:

- 1) Scan Incident QR Code (On IAP and posted around camp).
- 2) Go to Training Folder.
- 3) Complete Trainee Registration Form.

At the end of your assignment:

1. **Trainee:** Complete the exit interview found in the Training folder. Use the incident QR code to access the document (same way you signed up).
2. **Trainer:** Fill in the Position Task Book as completely as possible for this incident.
3. **Trainer:** Complete the ICS 225 performance evaluation and discuss with your Trainee. Make sure it's signed by both the Trainer and Trainee. Take a picture of the ICS 225 and send it to imt2training@gmail.com
- 4) The Training Specialist will send the training documents to the email address you provided.
- 5) For training related questions, call/text Dominic Panno (TNSP) at 530-913-8251 or email imt2training@gmail.com

BASE CAMP - YUCAIPA REGIONAL PARK - 33900 Oak Glenn Road, Yucaipa

PUBLIC INFORMATION MESSAGE

Posting fireline pictures to personal social media is not allowed.

Please e-mail pictures to 2020.apple@firenet.gov and we would be happy to post and share for you!

CAL FIRE FINANCE

Please turn times in to Finance. See example shift tickets.

FEDERAL FINANCE

Engines and Crews: Submit manifests to Finance either paper copy or email at Jennifer.white@usda.gov

All personnel submit times to Finance. A Finance representative will be at Yucaipa Camp (after briefing).

DIVISION/GROUP SUPERVISORS

- Please turn in a copy of your 204 each day to Finance or email to Abigail.olearyenterline@fire.ca.gov
- Note any resource changes or movements that left or came to your division during the operational period
- Print and sign your name
- Include our phone number and date
- We do not need the % breakdown of Fed/State DPA

HUMAN RESOURCE SPECIALIST

Greetings,

My name is Ryan Voelkl and I am the Human Resource Specialist (HRSP) assigned to the Apple Incident. As the HRSP, I am available to Incident personnel to provide assistance with a wide range of issues that may be impacting the work environment, such as conflict resolution and addressing any allegations of misconduct.

I am located at Yucaipa Regional Park camp on Main Street. If you can't come to me, I can come to you! Just text or call me at 530-457-7276.



Finance Section – Shift Ticket Examples

EMERGENCY SHIFT TICKET and EVALUATION FORM <small>The responsible Government Officer will complete this form each shift.</small>						Contractor Name DIRT PUSHERS LLC			
Incident or Project Name APPLE		Incident Number CARRU-096640		Request Number E-27		Operator #1 (DAY SHIFT) FIRST & LAST	Operator #2 (NIGHT SHIFT) FIRST & LAST		
Agreement Number MEU 247481-01						Operator Furnished By: <input checked="" type="checkbox"/> Contractor <input type="checkbox"/> Government			
Equipment Make 2002 CATERPILLAR		Equipment Model / Type D6N XL, TYPE 2 - E				Operating Supplies Furnished By: <input checked="" type="checkbox"/> Contractor <input type="checkbox"/> Government			
Serial Number COMPLETE SERIAL #		License Number				Equipment Status Inspected <input checked="" type="checkbox"/> Under Agreement Released by Government Withdrawn by Contractor			
Equipment Use						Remarks/Comments** NO DAMAGE / NO CLAIM EXTENDED SHIFT RESOURCE			
Date Mo / Day		Start		Stop				(Circle) Hours Days / Miles	
8/11		0701		2400				17 DIV X	
8/12		0001		0700				7 DIV X	
Vendor Rating						Govt. Rep. Name and Position – PRINT Print Your Name			
Met Performance Expectations						Govt. Rep. Signature <i>Your Signature</i>			
Equipment in Safe Working Condition						Contractor Signature <i>Contractor Signature</i>			
Operator Skill Level									
Operates Safely									
Operator's Cooperation Level									
Overall Performance						Date 8/12/2020 Time 0700			
* NOTE: any rating of POOR requires an explanation in Comment Section. ** Final evaluation or for more documentation, use a CALFIRE Form 230 or equivalent.						CAL FIRE 297 (Rev 3-2011)			

EMERGENCY SHIFT TICKET and EVALUATION FORM <small>The responsible Government Officer will complete this form each shift.</small>						Contractor Name TRANSPORTS EXPRESS			
Incident or Project Name APPLE		Incident Number CARRU-096640		Request Number E-123		Operator #1 (DAY SHIFT) FIRST & LAST	Operator #2		
Agreement Number LNU 058799-00						Operator Furnished By: <input checked="" type="checkbox"/> Contractor <input type="checkbox"/> Government			
Equipment Make 1999 PETERBILT 379		Equipment Model / Type TRANSPORT 18 WHEEL				Operating Supplies Furnished By: <input checked="" type="checkbox"/> Contractor <input type="checkbox"/> Government			
Serial Number COMPLETE VIN #		License Number 12345A1				Equipment Status Inspected <input checked="" type="checkbox"/> Under Agreement Released by Government Withdrawn by Contractor			
Equipment Use						Remarks/Comments** NO DAMAGE / NO CLAIM STANDARD SHIFT RESOURCE			
Date Mo / Day		Start		Stop				(Circle) Hours Days / Miles	
8/11		0001		0700				7 OFF SHIFT	
8/11		0701		1900				12 DIV X	
8/11		1901		2400		5 OFF SHIFT			
Vendor Rating						Govt. Rep. Name and Position – PRINT Print Your Name			
Met Performance Expectations						Govt. Rep. Signature <i>Your Signature</i>			
Equipment in Safe Working Condition						Contractor Signature <i>Contractor Signature</i>			
Operator Skill Level									
Operates Safely									
Operator's Cooperation Level									
Overall Performance						Date 8/11/2020 Time 1900			
* NOTE: any rating of POOR requires an explanation in Comment Section. ** Final evaluation or for more documentation, use a CALFIRE Form 230 or equivalent.						CAL FIRE 297 (Rev 3-2011)			

08/12/2020

TENTATIVE RELEASE

APPLE US-CA-RRU-096640

CREWS

C-50028	0700	(HC2)	17007 - PATRICK
C-50029	0700	(HC2)	17021 - GRAYBACK FORESTRY
C-50031	0700	(HC2)	17068 - FRANCO REFORESTATION
C-50032	0700	(HC2)	17070 - FRANCO REFORESTATION

EQUIPMENT

E-196	0700	(ES3)	ENGINE S/T - T3 - 9140C (S/T
E-50146	0700	(RES)	MED TRAILER - FRONTLINE -
E-50147	0700	(RES)	MED TRAILER - FRONTLINE
E-167	0715	(ES3)	ENGINE S/T - T3 - 9270C (S/T - 9270
E-261	0715	(MEC)	SERVICE VEHICLE MODULE -
E-229	0730	(WTS1)	WATER TENDER - T2 - J & M
E-259	0730	(MEC)	SERVICE VEHICLE MODULE -
E-50009	0730	(ENG3)	ENGINE - T3 -
E-50031	0730	(ENG3)	ENGINE - T3X - AZ-CDT - LIC# G-
E-179	0800	(STK)	STAKESIDE - CLIFFORD WITT
E-260	0800	(MEC)	SERVICE VEHICLE MODULE -
E-50051	0800	(STK)	LONESTAR ENTERPRISES INC.
E-176	0830	(STK)	STAKESIDE - KIMBERLY
E-180	0830	(MEC)	JUAN O'S MOBILE REPAIR &
E-50063	1200	(PU)	CONACHER, ROBERT
E-50066	1200	(PU)	TRANSPORTATION - PICKUP -
E-50068	1200	(PU)	ROSEBERRY, PAT
E-50124	1400	(MEC)	MISC - SERVICE TRUCK W/
E-50125	1400	(MEC)	MISC - SERVICE TRUCK W/

08/12/2020

TENTATIVE RELEASE

APPLE US-CA-RRU-096640

OVERHEAD

O-50270	0700	(HEQB)	LOPEZ, JULIAN
O-50118	0700	(PIOF)	MCFADDEN, KELTON JULLIAN
O-37	0700	(THSP)	PATINO, DANIEL
O-50195	0700	(SOF2)	PHILLIPS, JEREMIAH A
O-50112	0700	(PIO2)	SABA, RENETTE M
O-36	0715	(THSP)	VALLE, JOSE
O-201	0730	(DIVS)	KREMENSKY, KEN
O-241	0800	(EMPF)	CARLSON, EDWARD
O-50309	0800	(PIO2)	HOWARD, CINDY
O-188	0800	(EMPF)	HOWARD, RYAN
O-50047	0800	(PIO2)	MACKENSEN, JIM S
O-242	0800	(EMPF)	THOMAS, BRIAN KARL
O-262	0815	(EMTF)	ALLOIS, SHAWN A
O-254	0815	(EMPF)	COCKRUM, PATRICK
O-191	0815	(EMPF)	LOPEZ, MIGUEL ANGEL
O-253	0830	(EMPF)	ZAKARIAN, ARA
O-50209	0900	(SOF2)	BEGAY JR, WILLIE N
O-50308	0900	(ARCH)	CARVER, LARRYNN
O-50275	0900	(PSC1)	LEUCK JR, RICK J
O-331	0900	(ARCH)	RUZICKA, DENISE
O-50208	0930	(SOF2)	HEPPNER, STEVE
O-184	1200	(SOFR)	BARNHART, JEFFREY L
O-50228	1600	(EQPM)	TANNER, ERIC L
O-50229	1600	(EQPI)	WILKIN, TIMOTHY ANDREW

APPLE CAMP

390 WEST OAK VALLEY ROAD
BEAUMONT, CA 92223

FOOD	0600-0930 1800-2200
FUEL	0600-1100 1800-2200
SHOWERS	0500-1200 1400-2200
SUPPLY	0600-2200
LAUNDRY	0500-2200

SHOWERS SLEEPERS

ENGINE PARKING



GROUND
SUPPORT

LUNCH HYDRATION

MEETING
TENT

CREW
SLEEPING

FOOD

Noble Creek
Regional Park

MAIN STREET

SUPPLY

OVERHEAD
SLEEPING

BRIEFING

MEDICAL

CDCR

ENTER

EXIT

Oak Valley Pkwy

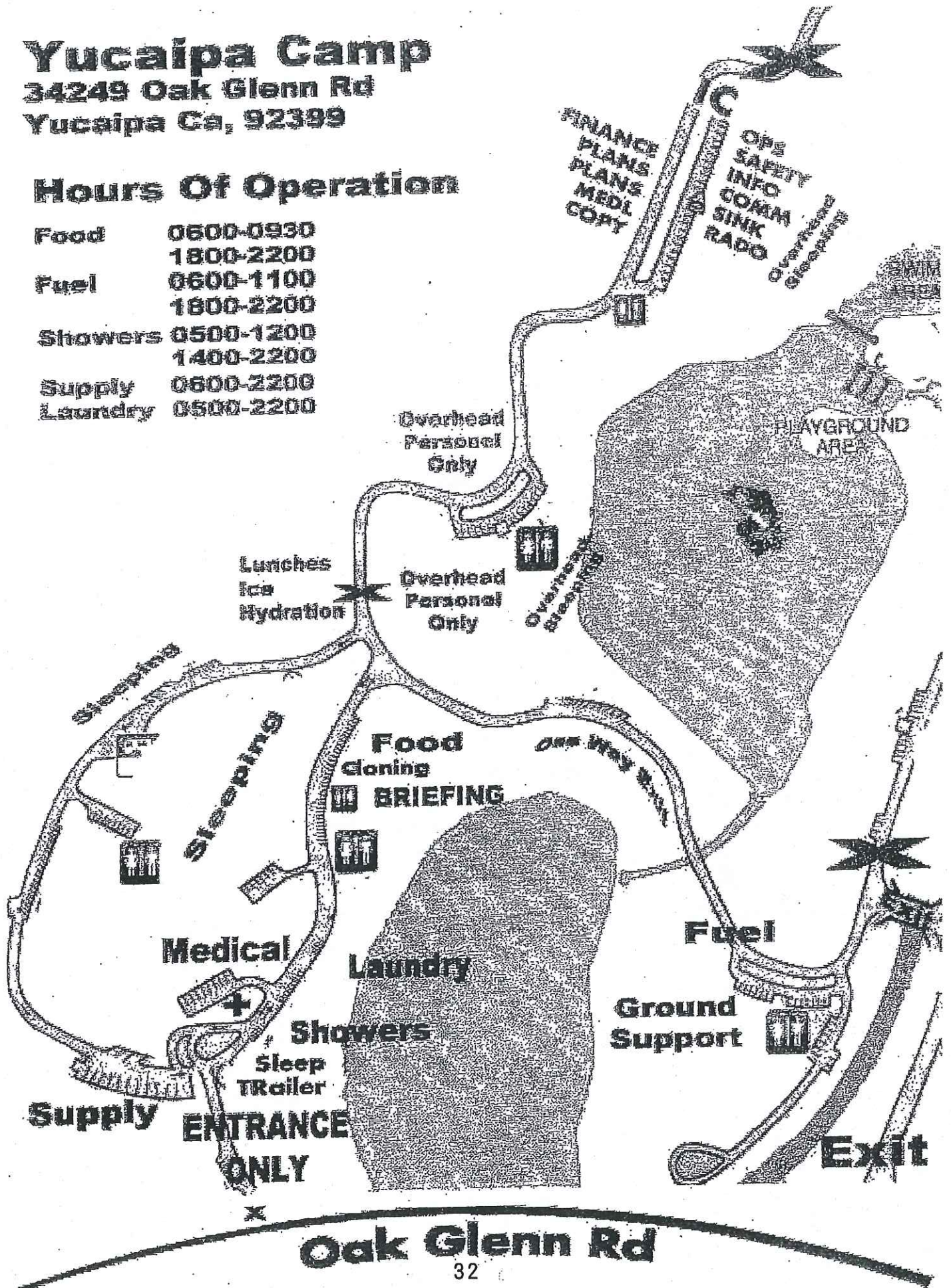
Yucaipa Camp

34249 Oak Glenn Rd

Yucaipa Ca, 92399

Hours Of Operation

Food	0600-0930
	1800-2200
Fuel	0600-1100
	1800-2200
Showers	0500-1200
	1400-2200
Supply	0600-2200
Laundry	0500-2200



MEDICAL PLAN	1. INCIDENT NAME: Apple	2. DATE PREPARED: August 11, 2020	3. TIME PREPARED: 1600	4. OPERATIONAL PERIOD 08/12/20 – 08/12/20 0700-0700
---------------------	-----------------------------------	---	----------------------------------	---

5. INCIDENT MEDICAL AID STATIONS	
MEDICAL AID STATIONS	LOCATION
Frontline Medical	ICP – Noble Creek Park – 390 Oak Valley Parkway, Beaumont
ALS	
YES	
NO	
	X

6. TRANSPORTATION

A. Ambulance Services				
NAME	LOCATION	PHONE	ALS	
			Yes	No
Big Bear Ambulance	Yucaipa Camp	951-203-2513	X	
CAL Fire San Bernardino	Yucaipa, Highland, Oak Glen	800-992-4494	X	
CAL Fire Riverside - Perris Command Center	Riverside County	951-940-6949	X	
COMM Center – San Bernardino	San Bernardino County	909-356-3805	X	

B. AIR AMBULANCE

NAME	LOCATION	ALS	
		YES	NO
IWI in San Bernardino Co.- COMM Center 909-356-3805	IWI in Riverside Co.-CAL Fire Riverside/Perris 951-940-6949		
OCFA – ALS/ Hoist 250' / NVG	Fullerton (30 minute ETA)	X	
CHP H80 or H82 – ALS /160' Hoist/ NVG/ Avail 0600-0000	Apple Valley Direct 760-240-8004	X	
CHP H60 - ALS /Hoist 150' / NVG/ Avail 0600-0200	Thermal Direct 760-984-5300	X	
S.B. Sheriff 40 King- BLS/ Hoist 150' / NVG/ Avail 1400-0000	Apple Valley Direct 909-387-8313		X
S.B. Sheriff AR 8- ALS/ Hoist 250' / NVG/ Avail 0600-1800	San Bernardino Direct 909-387-8313	X	

7. HOSPITALS

NAME	ADDRESS	TRAVEL TIME		PHONE	TRAUMA		HELIPAD		BURN CENTER	
		AIR	GRND		Yes	No	YES	NO	YES	NO
Arrowhead Regional Thomas Bros-SB 576 A-5	400 N. Pepper Ave. Colton, CA 34° 04.55' N x 117° 20.95' W	15 Min	35 Min	909-580-1357 ER 909-580-4356 Charge	L-II		X		X	
Loma Linda (AV) Thomas Bros-SB 647 B-1	11234 Anderson St. Loma Linda 34° 2.93' N x 117° 15.83' W	10 Min	30 Min	909-558-4444 ER 909-558-7911 MICN	L-I		X			X
Desert Regional (AV) Thomas Bros-RIV 726 E-7	1150 N. Indian Cyn Palm Springs 33° 50.30' N x 116° 32.63' W	10 Min	35 Min	760-323-6251 ER	L-II		X			X
Riverside University (AV) Thomas Bros-RIV 718 B-6	26520 Cactus Ave Moreno Valley 33° 54.82' N x 117° 11.79' W	10 Min	24 Min	951-486-4962 ER 951-486-4137 MICN	L-II		X			X
Inland Valley (AV) Thomas Bros-RIV 927 G-1	36485 Inland Valley. Wildomar 33° 35.55' N x 117° 14.18' W	15 Min	1 Hour	951-677-9773 ER 951-677-0833 MICN	L-II		X			X

8. MEDICAL EMERGENCY PROCEDURES

LINE "MEDICAL-EMERGENCY" PLAN:

- Crew Supervisor to contact Division Supervisor/Operations with:
 - Patient Complaint, Condition and Location via Tactical or Command frequency. Priority 1/Red & 2/Yellow Patients trigger Incident within Incident (IWI).
- Division Supervisor/Operation contacts Apple Communications:
 - Division Supervisor or POC* will run "Medical –Emergency" on the Command frequency.
 - Division Supervisor or POC* to use "Medical Incident Report" worksheet on back of this page or back of IRPG.
 - Apple Communication contacts Medical Unit Leader on the Command frequency or cell phone (747) 263-4881 (Medical Emergencies Only).

POC* (Point of Contact) and/or Operations

LINE "NON-EMERGENCY INCIDENT" PLAN:

- Crew Supervisor to contact Division Supervisor with:
 - Patient Complaint, Condition and Location via Tactical or Command frequency. **Priority 3/Green Patients do not** trigger Incident within Incident (IWI).
- Division Supervisor contacts Apple Communications:
 - Division Supervisor or POC* will run "Non-Emergency Incident" on the Command frequency.
 - Division Supervisor or POC* will use "Medical Incident Report" worksheet on the back of this page or back of IRPG.
 - Apple Communications contacts Medical Unit Leader on the Command frequency or cell phone (747) 263-4881 (For medical related incidents only).

IN-CAMP – 24 HOUR MEDICAL

- Contact Apple Communications with:
 - Patient Complaint, Condition and Location via LOGS net or Command frequency

9. PREPARED BY Jacob Long – MEDL(T)	10. REVIEWED BY
--	-----------------

Medical Incident Report

FOR A **NON-EMERGENCY INCIDENT**: WORK THROUGH CHAIN OF COMMAND TO REPORT AND TRANSPORT INJURED PERSONNEL AS NECESSARY.

FOR A **MEDICAL EMERGENCY**: IDENTIFY ON SCENE INCIDENT COMMANDER BY NAME AND POSITION AND ANNOUNCE "MEDICAL EMERGENCY" TO INITIATE RESPONSE FROM COMMUNICATIONS

Use the following items to communicate situation to communications/dispatch.

1. CONTACT COMMUNICATIONS / DISPATCH (Verify correct frequency prior to starting report)

Ex: "Communications, Div. Alpha. Stand-by for Emergency Traffic."

2. INCIDENT STATUS: *Provide incident summary (including number of patients) and command structure.*

Ex: "Communications, I have a Red priority patient, unconscious, struck by a falling tree.

Requesting air ambulance to Forest Road 1 at (Lat./Long.)

"This will be the Trout Meadow Medical Incident, IC is TFLD Jones. EMT Smith is providing medical care."

Severity of Emergency AND Transport Priority (priority 1, 2, 3)	<input type="checkbox"/> RED / PRIORITY 1 Life or limb threatening injury or illness. Evacuation need is IMMEDIATE <i>Ex: Unconscious, difficulty breathing, bleeding severely, 2° - 3° burns more than 4 palm sizes, heat stroke, disoriented.</i>
	<input type="checkbox"/> YELLOW / PRIORITY 2 Serious Injury or illness. Evacuation may be DELAYED if necessary. <i>Ex: Significant trauma, unable to walk, 2° - 3° burns not more than 1-3 palm sizes.</i>
	<input type="checkbox"/> GREEN / PRIORITY 3 Minor Injury or illness. Non-Emergency transport <i>Ex: Sprains, strains, minor heat-related illness.</i>
Nature of Injury or Illness & Mechanism of Injury	Brief Summary of Injury or Illness <i>(Ex: Unconscious, Struck by Falling Tree)</i>
Transport Request	<i>Air Ambulance / Short Haul/Hoist Ground Ambulance / Other</i>
Patient Location	<i>Descriptive Location & Lat. / Long. (WGS84)</i>
Incident Name	<i>Geographic Name + "Medical" (Ex: Trout Meadow Medical)</i>
On-Scene Incident Commander	<i>Name of on-scene IC of Incident within an Incident (Ex: TFLD Jones)</i>
Crew Patient Care	<i>Name of Care Provider (Ex: EMT Smith)</i>

3. INITIAL PATIENT ASSESSMENT: *Complete this section for each patient as applicable (start with the most severe patient)*

Agency Affiliation: (NO PATIENT NAMES) Federal Contractor Local Government

Patient Assessment: Age: Weight: Chief Complaint:

(If pertinent to Injury) Skin Signs: (color/moisture/temp) Level of Consciousness: BP: HR: Respirations:

Treatment:

4. TRANSPORT PLAN:

Evacuation Location (*drop point, intersection, helispot, Lat. / Long, hazards*) Patient's ETA to Location:

5. ADDITIONAL RESOURCES / EQUIPMENT NEEDS:

Paramedic / EMT - Crews - Immobilization Devices - AED - Oxygen - Trauma Bag - IV/Fluid(s) - Splints - Rope rescue - Wheeled litter - HAZMAT - Extrication

6. COMMUNICATIONS: Identify State Air/Ground EMS Frequencies and Hospital Contacts as applicable

Function	Channel Name/Number	Receive (RX)	Tone/NAC *	Transmit (TX)	Tone/NAC *
COMMAND					
AIR-TO-GRND	Contact on CALCORD When aircraft in line of site	156.0750 N	156.7	156.0750	156.7
TACTICAL					

7. CONTINGENCY: Considerations: *If primary options fail, what actions can be implemented in conjunction with primary evacuation method? Be thinking ahead.*

8. ADDITIONAL INFORMATION: *Updates/Changes, etc.*

REMEMBER: Confirm ETA's of resources ordered. Act according to your level of training
Be Alert - Keep Calm - Think Clearly - Act Decisively

*** Follow up with MEDL upon return to ICP ***