

INCIDENT ACTION PLAN

APPLE

CARRU096640



OPERATIONAL PERIOD

8/9/2020 0700

to

8/10/2020 0700

0700 - Operational Briefing at ICP and Yucaipa

0900 - Cooperators Meeting

1800 - Night Ops Briefing

1900 - Planning Meeting

Sunday

INCIDENT OBJECTIVES (ICS 202)

1. Incident Name: <p style="text-align: center;">Apple</p>	2. Operational Period:	Date From: 8/9/2020 Time From: 0700	Date To: 8/10/2020 Time To: 0700
--	-------------------------------	--	-------------------------------------

3. Objective(s):

Strategic Framework:

Implement a full suppression strategy on the Apple Fire. Values at risk include human safety, private property, critical infrastructure, associated improvements and wilderness values. Apply tactics that offer the highest probability of success.

Leader's Intent:

Provide the highest level of customer service to all involved with, or impacted by the Apple Fire. Ensure transparent, timely and accurate communication at all levels of the incident. All incident assigned personnel should be prepared to take the appropriate actions regarding:

- Professional behavior, conduct and timely effective communications.
- Personal safety and the safety of others, including driving slow, safe and defensively.
- Manage fatigue by taking breaks and maintaining work/ rest cycles.
- Minimize risk and limit exposure to COVID-19 by daily screening, minimizing large group settings, social distancing, wearing face coverings, hand washing and practicing Module of One Concept.

Management Objectives:

- Provide for firefighter and public safety through hazard recognition and application of the Risk Management Process.
- Provide critical infrastructure including but not limited to transmission and communication towers, water systems, natural gas, railroads and highways.
- Ensure resource allocation and mission are documented for cost apportionment.
- Minimize impact to aquatic and wildland scenic rivers by utilizing retardant avoidance.
- Reduce the impact to Sand to Snow Monument and San Gorgonio Wilderness values by utilizing Minimum Impact Suppression Tactics (MIST).

Control Objectives:

- Keep the fire North of the established control lines to protect the communities of Cherry Valley, Beaumont and Banning
- Keep the fire East of Oak Glen Road to protect the communities of Yucaipa, Oak Glen and Cherry Valley.
- Keep the fire South of Hwy 38 to limit extension into the San Gorgonio Wilderness and to protect the communities of Mountain Home, Forest Falls and Angeles Oaks.
- Keep the fire West of Hwy 62 and Morongo Valley to protect the communities of Morongo Valley, Desert Hot Springs and Joshua Tree National Park.

General Situational Awareness:

- Steep and rugged terrain, critically dry and receptive fuel beds, active area for fire history and drought stressed trees.
- In the COVID-19 environment, high density populations or large groups are particularly at risk. To help protect yourself, your family and to ensure all employees return home safely, make sure to practice social distancing.
- Enhanced hygiene (especially handwashing), PPE & monitoring practices limiting the infection rate of first responders.

5. Site Safety Plan Required? Yes No

Approved Site Safety Plan(s) Located at:


6. Incident Action Plan

<input checked="" type="checkbox"/> ICS 203	<input checked="" type="checkbox"/> ICS 215A	<input type="checkbox"/> ICS 205 A	<input type="checkbox"/>
<input checked="" type="checkbox"/> ICS 204	<input checked="" type="checkbox"/> ICS 220	<input checked="" type="checkbox"/> Training Message	<input type="checkbox"/>
<input checked="" type="checkbox"/> ICS 205	<input checked="" type="checkbox"/> Facility Maps	<input type="checkbox"/> Travel Map	<input type="checkbox"/>
<input checked="" type="checkbox"/> ICS 206	<input checked="" type="checkbox"/> Weather Forecast	<input checked="" type="checkbox"/> Demob Plan	<input type="checkbox"/> County Health Message
<input checked="" type="checkbox"/> ICS 208	<input checked="" type="checkbox"/> Fire Behavior	<input checked="" type="checkbox"/> Finance Message	<input checked="" type="checkbox"/> ICS 214

7. Prepared By: Rick Leuck Position/Title: PSC 1 Signature:

8. Approved by Incident Commander: Mike Minton Signature:

ORGANIZATION ASSIGNMENT LIST (ICS 203)

1. Incident Name: Apple		2. Operational Period: Date From: 8/9/2020 Time From: 0700		Date To: 8/10/2020 Time To: 0700	
3. Incident Commander(s) and Command Staff:			7. Operation Section:		
IC/UC's	T. Hopkins/ M. Minton/ Salas/ Johnny(T)/ Fogle (T)	Operations	D. Willis/ P. Russell/ M. Hanley(T)/ P. Robello(T)		
Deputy	C. Joseph	Deputy Operations	A. McBath/ J. Janssen		
Safety Officer	F. Espinoza/ D. Updike/ T. Irwin/ P. Leusch(T)	Night Ops	K. Gurrola		
Information Officer	Lindbery/ Theune(T)/ Wyatt(T)	Strategic Ops			
Liaison Officer	R. Ekman/ R. Alpert	Branch	I	T. Abel/ M. Gerwe(T) K. Kremensky(Night)	
Human Resources	R. Voelkle	Division/Group	F	D. Duran B. Frederick (Night)	
		Division/Group	I	R. Torres	
4. Agency/Organization Representatives:		Division/Group	Forest Falls Structure	T. Leake	
Agency/Organization	Name	Division/Group	.		
CDCR	N. Patterson	Branch	III	M. Klimek/ J. Fallon(T) K. Kremensky(Night)	
SO CAL EDISON	T. Whitman/ S. Brown	Division/Group	L/O	A. Pula	
RSO	T. Salas	Division/Group	R	J. Leutzinger	
Riverside EMD	R. Mesa	Division/Group			
CAL OES	R. Unkovich	Division/Group			
SBSO	B. Smith	Branch	V	S. Prather/ J. Eichamer(T) J. Pierce (Night)	
CHP	B. Robinson/ Simmons/ R. Rodriguez	Division/Group	U	B. Tai	
BDC Fire	R. Walls/ D. Munsey	Division/Group	X/Y	R. Valles	
Morongo Fire	G. Yearsley	Division/Group	T	N. Stanzak	
Air Resource Advisor	A. Nick	Division/Group			
BIA	R. Ruiz	Division/Group			
CALFIRE AA	S. Littlefield	Division/Group			
USFS AA	M. Stamer	Branch	VII	A. Benett K. Kremensky(Night)	
USFS AREP	J. Rechsteiner	Division/Group	A/Z	S. Miller A. Schmidt (Night)	
		Division/Group	Oak Glen Structure	McNally	
5. Planning Section:		Division/Group	Suppression Repair	A. Bennett	
Chief	G. Sanchez/ R. Leuck/ D. Chavez(T) R. Burnside PSC2(T)	Division/Group			
Deputy	C. Carrera	Division/Group			
Resource Unit	J. Ferguson/ J. Shaffer/ T. Rye	Division/Group			
Situation Unit	T. Williamson/ Jim Day/ D. Janssen	Division/Group			
Documentation Unit	P. Saba	Division/Group			
Demobilization Unit	I. Contreras/ K. Kutzke(T)	Division/Group			
GISS	C. Bass/ R. Kriha	Division/Group			
FBAN	D. Burns/ L. Blake(T)	Division/Group			
IMET	R. Thompson	Division/Group			
Training Tech Spec	D. Panno	Air Operations Branch		Director:	Terry Harris
Lead READ	J. Donnell	Air Support Group Supervisor		K. McElfish	
		Air Tactical Group Supervisor			
6. Logistics Section		Helibase Manager		J. Collins (Banning)	
Chief	K. Kumpel/ A. Tat(T)/ M. Ferguson/ B. Schurr/ W. Crews(T)	Helibase Manager		J. Czapinski (Redlands)	
Supply Unit	R. Browning/ M. Hernandez/ E. Simpson	8. Finance/Administration Section:			
Facilities Unit	J. Hodge	Chief	L. Lee/ A. Lee(T)/ J. Franklin		
Ground Support Unit	B. Clark	Time Unit	J. White/ A. DaSilva		
Communications Unit	K. Harper	Procurement Unit	M. Jeffries		
Medical Unit	C. Schilling/ S. Mohlenbrok	Comp/Claims Unit	E. Downing/ S. Baptista		
		Cost Unit	T. Monohan/ H. Horn		
Prepared By: Name: Rick Leuck		Position/Title: PSC 1		Signature: 	
ICS 203		Date/Time: 8/8/2020 2300 hours		<small>NIMS IAP</small>	



INCIDENT Weather Forecast



FORECAST NO: 6

NAME OF FIRE: Apple

PREDICTION FOR: 24 Hour SHIFT

UNIT: CalFire

SHIFT DATE: 8/9/20 (0700) to 8/10/20 (0700)

SIGNED:

TIME AND DATE

**Richard Thompson
Incident Meteorologist**

FORECAST ISSUED: 8/8/20 @ 2000

WEATHER DISCUSSION: Warmer and drier conditions are expected across the incident during the operational period. Maximum relative humidity will occur in the evening hours with the lowest values in the morning hours. Ridgetop winds will be southeast to south this morning and again tonight with southwesterly winds this afternoon and evening. At lower elevations, typical diurnal winds will prevail.

The warming and drying trend will continue through the weekend with weaker wind speeds.

WEATHER FORECAST:

WEATHER: Mostly clear.

TEMPERATURES: Valleys/Lower Slopes: Max: 87-97.
Min: 60-68.

Ridges/Upper Slopes: Max: 77-87.
Min: 62-68.

HUMIDITY: Valleys/Lower Slopes: Min: 12-20%.
Max: 35-50%.

Ridges/Upper Slopes: Min: 10-18%.
Max: 30-45% (Falling overnight).

20 FT WINDS:

RIDGETOP - 0700-1200: Southeast to south 4-8 MPH Gust 10-15 MPH.
1200-2200: Southwest to west 6-12 MPH Gust 15-20 MPH.
2200-0700: Southeast to south 4-8 MPH Gust 10-15 MPH.

SLOPE/VALLEY - 0700-0900: Variable 3-6 MPH Gust 10 MPH
0900-1200:: Upslope/upvalley 4-8 MPH Gust 10-15 MPH.
1200-2000: Upvalley 6-12 MPH Gust 20-25 MPH
2000-0700: Downslope/downvalley 3-6 MPH Gust 10 MPH.

Latest observations within a 20 mile radius of the Apple Fire:



FIRE BEHAVIOR FORECAST

FORECAST NUMBER: 7	TYPE OF FIRE: Wild Fire
FIRE NAME: Apple	OPERATIONAL PERIOD: August 9, 2020 24hr
DATE ISSUED: 8/8/20	TIME ISSUED: 1900
UNIT: CA-RRU	SIGNED: _____ Typed/printed: /s/ Dennis Burns

INPUTS

WEATHER SUMMARY: Warmer and Drier

Temps: Day Valleys 87-97 Ridges 77-87 Night Valleys 50-68 Ridges 62-68

RH: Day 10-18% Night 30-45%

Winds: Day Ridges SW 6-12 gusts to 15-20mph Night Ridges SE to S 4-8 gusts to 10-15mph

OUTPUTS

FIRE BEHAVIOR

GENERAL: Minimal forward fire progression is expected on any of the Branches. Expect active backing and flanking mainly in unburned interior islands. Fire whirls and dust devils are probable on the lower slopes, the flats and at intersecting drainages. Make sure lookouts have a good view of the fire. When the winds pick up in the morning and the sky begins to clear, expect fire activity to increase.

At night, expect the fire to remain active as the peak RH occurs in the early evening then drops again, early in the morning.

With the dry fuels, spotting will be problematic it should be short range less than 400ft and from rollout.

1000hr fuels are at 6%FM and are receptive to spots

Probability of Ignition will be 90-100%

If the fire escapes or you become involved with IA, expect Flame lengths 1-4 feet in the grass, 4-25feet in the brush.

SPECIFIC:

Branch I: The fire is holding at the top of Yucaipa Ridge and little to no forward progression is expected. Any spotting would be from rollout but would back slowly into the Forest Falls drainage. Night crews need to continually assess down canyon winds.

Branch III: Minimal fire progression is expected in the northeast corner. What fire there is on the Branch is in sparse fuels and shows little potential for spread during the shift. Pockets of manzanita will readily burn and will be a source of visible smoke. Rollout will be the primary source of spotting.

Branch V: No forward fire progression is expected. If the fire becomes established on the east side of Millard Canyon expect the fire to progress to the northeast. Interior islands from the burn operation will continue to actively burn and are a potential source for spot fires.

Branch VII: No forward progression expected along the south side of the Branch.

AIR OPERATIONS: No anticipated smoke impacts to air ops.

SAFETY

Most of our fire is situated on extremely steep slopes, assess your work area for rollout potential.

Although no forward progression is expected do not become complacent there is still plenty of heat out there.

INCIDENT SAFETY ANALYSIS 215a

APPLE - Sunday, August 09, 2020

8. Location	9. Hazard	6. Control or Abatement Action (Engineering, Administrative, PPE, Avoidance, Education, etc)
All Divisions	Driving & Traffic	<ul style="list-style-type: none"> ~ Practice "Defensive Driving" techniques traveling on all roads and city streets. ~ Use spotters when backing. ~ Follow Driving LCES (Lights, Chock blocks, Emergency brake, Seat belts. ~ Always use headlights ~ Observe posted speed limits. ~ Use the 3 second rule for following distance when driving. ~ Use chock blocks, turn wheels into hill
Branch 3, 5	Firing Operations & Devices	<ul style="list-style-type: none"> ~ Only personnel trained in the use of each device will be authorized to use firing equipment. ~ Ensure all personnel are aware of firing operation that may affect them. ~ Wear appropriate PPE. ~ Ensure aerial/ground ignition plans have been adequately developed and personnel are briefed.
All Divisions	Communications	<ul style="list-style-type: none"> ~ Maintain communication with aviation resources, and suppression organization. ~ Ensure all know frequency and protocol for contacting resources. ~ Utilize the ICS 205. ~ Utilize human repeaters when working in dead spots.
Branch I, III	Spike Camp	<ul style="list-style-type: none"> ~ Keep a clean camp. ~ Ensure communications are in place. ~ Review and observe "Line Spike" considerations (IRPG pg. 98).
Branch I, III, V	Helicopter Operations	<ul style="list-style-type: none"> ~ Stay clear of all bucket drops when suppression actions are in place and allow 1 minute prior to re-entry. ~ Monitor A-G communications. ~ Follow aviation safety guidelines in IRPG and IHOG.
Branch V	Heavy Equipment Operations	<ul style="list-style-type: none"> ~ Ensure communications are established with operators. ~ Use hand signals if other communications are unavailable. ~ Maintain a 50'-100' exclusion area around equipment and increase it to 2 1/2 times tree height when in timber. ~ Use a spotter when backing. ~ Avoid working below heavy equipment.
All Divisions	Hazard Trees	<ul style="list-style-type: none"> ~ Follow "Hazard Tree Safety" guidelines, IRPG page 22. ~ Post lookouts, or use a spotter in mop-up areas with personnel. ~ Don't park vehicles or take breaks in high concentrations of hazard trees. ~ Establish trigger points for disengagement during high wind events. ~ Remember that the hazard zone extends a minimum of 2 1/2 tree heights.
Branch I, III, V	Fireline Hazards	<ul style="list-style-type: none"> ~ Do not work directly above or below personnel during firing and mop-up operations. ~ Watch for falling and rolling debris on steep slopes. ~ Alert crew personnel of rolling debris by yelling to affected individuals. ~ Position debris that could roll vertically on slope. ~ Avoid stepping over debris that could roll by walking around object. ~ Avoid radiant heat by wearing appropriate PPE correctly. ~ Use correct tool for task assigned. ~ Follow power line safety protocol as outlined on page 24 in IRPG. ~ Flag and isolate all HAZMAT and alert all personnel working in Division. ~ Follow WUI recommendations on pages 12-13 in IRPG.
All Divisions	COVID EXPOSURE	Maintain 6' social distancing, wear your mask, proper hand washing

Health & Safety Message

**Incident: Apple Fire
CA-RRU-096640**

**Date/Op Period: 8/9-10/2020
0700-0700**

VEHICLE OPERATIONS:



As we travel to and from the incident, and through the communities, we need to remember we are visitors here, with that said, drive the speed limits with courtesy in mind.



FIRING OPERATIONS: Have a plan (GO/NO GO), beginning and ending points, and well communicated. Have enough holding resources in place prior to dropping fire on the ground. Just know, LCES IS PARAMOUNT FOR A SUCCESSFUL BURN SHOW.

SPIKE CAMP: Anything that could go wrong will go wrong potentially when spiked out. Understand the medical incident report, (8 line) as well as the 206 and the extraction plan. Proper hygiene and hand washing will limit the camp crud and potential COVID 19 issues. Wash your hands often.

Hydration and Heat Related Illnesses:

While on your assignment be sure to thirsty now, you've waited too long. your operational period and utilize Monitor yourself and your crews for



hydrate all day. If you're Pack plenty of water for electrolytes in your water. signs of dehydration.

COMMUNICATION: Ensure that your radios are cloned to the current load. Verify your division frequencies on the ICS 204 and communications plan ICS-205. Perform radio check to ensure adequate coverage in the area that you are working.

HEAVY EQUIPMENT: Operators have limited vision. Have proper communications or use hand signals. Work outside of the 100' safety circle and never work below heavy equipment.

HAZARD TREES: Hazard tree safety guidelines on page 22 in the IRPG, post lookouts in hazard tree areas, ensure good communications, and know where your closest hoist ship is from.

Prepared by: John Bates SOF1 (t)

Approved by: Freddie Espinoza SOF1

L. Lookouts C. Communications E. Escape Routes S. Safety Zones

ASSIGNMENT LIST (ICS 204 WF)

CONTROLLED UNCLASSIFIED
INFORMATION//BASIC

1. Incident Name:	2. Operational Period:	3. Branch	Division
Apple	Date From: 08/09/20 Date To: 08/10/20 Time From: 0700 Time To: 0700	I	F
4. Operations Personnel:		Page 1 of 2	Foxtrot

Operations Section Chief: D. Willis/ P. Russell/ M. Hanley(T)/ P. Robello(T)	Night Ops: K. Gurrola
Branch Director: T. Abel<12>/ M. Gerwe(T)<12> K. Kremensky<12> (Night)	Branch Safety: Martino, Heppner, Faulkner (night)
Division/Group Supervisor: D. Duran <12> B. Frederick (Night)	Air Attack:

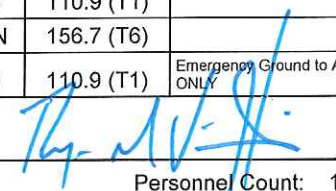
5. Resources Assigned:	** Resources Below in Bold are 12 Hour **						
Resource Identifier	ALS	LWD	Leader	Personnel	Request #	Hours	Reporting Location
CRW1 EL CARISO IHC		8/14	Kott	19	C-20	0700-1900	Yucaipa
CRW1 FULTON IHC		8/12	Acosta, Josh	19	C-7	0700-1900	Yucaipa
CRW1 PIKE IHC		8/8	Smallman	21	C-30	0700-1900	Yucaipa
CRW1 SPRINGVILLE IHC		8/14	Medina	19	C-10	0700-1900	Yucaipa
CRW2IA TANANA CHIEFS		8/12	Troxel	20	C-26	0700-1900	Yucaipa
CRW2IA YUKON		8/12	More	21	C-28	1900-0700	Yucaipa
STC SNF 5600C		8/12	Seymour	21	E-98	0700-1900	Yucaipa
STC CNF 6632C		8/14	Naylor, Danny	27	E-97	0700-1900	Yucaipa
ENG3 BDF 35		8/15	Vergne, Brian	5	E-50040	0700-1900	Yucaipa
ENG3 BDF 312		8/13	Harkins, Andrew	5	E-137	1900-0700	Yucaipa
ENG3 BDF 353		8/14	Duran, David	5	E-142	0700-1900	Yucaipa
ENG3 PVT E-50009 FIREANT LLC				3	E-50009	1900-0700	Yucaipa
ENG3 TMU 342		8/17	Etheridge, Brian	5	E-50035	0700-1900	Yucaipa
ENG3 PVT E-50031 CORONA			Ganz, Eric	3	E-50031	1900-0700	Yucaipa
DOZ BDF 3			Baxter, Brian	5	E-50108	0700-1900	Yucaipa

6. Work Assignments:
 Task - Continue to improve direct control line from Pine Bench to Wilshire Peak. Construct contingency line on Yucaipa Ridge. Improve perimeter line around Oak Glen.
 Purpose - To protect the values at risk in Forest Falls and Oak Glen.
 End State - Fire does not impact Forest Falls or Oak Glen.

7. Special Instructions:
 Use the repeater which gives you the best reception.

8. Communications

Name	Ch	Function	Rx Freq	Rx Tone	Tx Freq	Tx Tone	Notes
NIFC C1	1	COMMAND	170.9750	T1 - 110.9	168.7000	T1 - 110.9	Linked (Morton Lookout)
CDF T25	7	TACTICAL	159.2775	192.8 (T16)	159.2775	192.8 (T16)	
A/G TACTICAL	14	A/G TACTICAL	173.0875	110.9 (T1)	173.0875	110.9 (T1)	
CALCORD	15	MEDICAL	156.0750N		156.0750N	156.7 (T6)	
AIRGUARD	16	GUARD V8	168.6250		168.6250	110.9 (T1)	Emergency Ground to Air ONLY

9. Prepared by: Name: Ryan Villarino RESL Signature: 

ICS 204 Date/Time: 8/8/2020 2200 Personnel Count: 193

ASSIGNMENT LIST (ICS 204 WF)

CONTROLLED UNCLASSIFIED
INFORMATION/BASIC

1. Incident Name: <p style="text-align: center; font-size: 1.2em;">Apple</p>		2. Operational Period: Date From: 08/09/20 Date To: 08/10/20 Time From: 0700 Time To: 0700				3. Branch <p style="text-align: center; font-size: 1.5em;">I F</p>		Division <p style="text-align: center; font-size: 1.5em;">Page 2 of 2 Foxtrot</p>	
4. Operations Personnel:									
Operations Section Chief: D. Willis/ P. Russell/ M. Hanley(T)/ P. Robello(T)				Night Ops: K. Gurrola					
Branch Director: T. Abel<12>/ M. Gerwe(T)<12> K. Kremensky<12> (Night)				Branch Safety: Martino, Heppner, Faulkner (night)					
Division/Group Supervisor: D. Duran <12> B. Frederick (Night)				Air Attack:					
5. Resources Assigned:									
** Resources Below in Bold are 12 Hour **									
Resource Identifier	ALS	LWD	Leader	Personnel	Request #	Hours	Reporting Location		
W/T2 PVT E-36 B&C ORDUNO		8/13	Orduno	2	E-36	0700-0700	Yucaipa		
W/T2 PVT E-37 - JIM FOLEY		8/14	Drew	2	E-37	0700-0700	Yucaipa		
W/T RVC 28			Jamie	1	E-74	0700-0700	Yucaipa		
W/T1 PVT E-227 - BRENDA'S		8/16	Cleer	2	E-227	0700-0700	Yucaipa		
W/T 139		8/21	Bethel, R.D.	2	E-50139	0700-0700	Yucaipa		
W/T PVT E-50140 COOL MULE INC		8/17	Pope, Norm	1	E-50140	0700-1900	Yucaipa		
W/T OES 11			Manheim	2	E-50143	0700-0700	Yucaipa		
HEQB LUPARELLO		8/18	Luparello, Eddy	1	O-50220	0700-1900	Yucaipa		
FEMT MEKETARIN		8/17	Meketarin, Chad	1	O-263	0700-0700	Yucaipa		
FEMP POLLOCK		8/16	Pollock, Larry	1	O-143	0700-0700	Yucaipa		
FEMP KERFOOT			Kerfoot, Errick	1	O-238	0700-0700	Yucaipa		
FEMP GILMAN JR			Gilman Jr, Mark	1	O-65	0700-0700	Yucaipa		
FOBS DVORIN			Dvorin, Marshall Prescott	1	O-101	0700-0700	Yucaipa		
FOBS FRAZIER			Frazier, Jeremy D	1	O-120	0700-0700	Yucaipa		
FOBS VIOLANTE		8/16	Violante, Andrew P	1	O-50174	0700-0700	Yucaipa		
READ HEALY			Healy, James	1	O-79	0700-1900	Yucaipa		
READ WILLIAMS			Williams, Emma	1	O-50228	0700-1900	Yucaipa		
READ SUREK			Surek, Evan James	1	O-50002	0700-1900	Yucaipa		
READ BROWN			Brown, Kayla	1	O-50295	0700-1900	Yucaipa		
READ ASHCRAFT			Ashcraft, Scott	1	O-50223	0700-1900	Yucaipa		
REMS ORANGE		8/17	Mathias, J.	4	O-181	0700-0700	Yucaipa		
6. Work Assignments:									
Task - Continue to improve direct control line from Pine Bench to Wilshire Peak. Construct contingency line on Yucaipa Ridge. Improve perimeter line around Oak Glen.									
Purpose - To protect the values at risk in Forest Falls and Oak Glen.									
End State - Fire does not impact Forest Falls or Oak Glen.									
7. Special Instructions:									
Use the repeater which gives you the best reception.									
8. Communications									
Name	Ch	Function	Rx Freq	Rx Tone	Tx Freq	Tx Tone	Notes		
NIFC C1	1	COMMAND	170.9750	T1 - 110.9	168.7000	T1 - 110.9	Linked (Morton Lookout)		
CDF T25	7	TACTICAL	159.2775	192.8 (T16)	159.2775	192.8 (T16)			
A/G TACTICAL	14	A/G TACTICAL	173.0875	110.9 (T1)	173.0875	110.9 (T1)			
CALCORD	15	MEDICAL	156.0750N		156.0750N	156.7 (T6)			
AIRGUARD	16	GUARD V8	168.6250		168.6250	110.9 (T1)	Emergency Ground to Air ONLY		
9. Prepared by: Name: Ryan Villarino RESL									
						Signature:			
ICS 204		Date/Time: 8/8/2020		2200		Personnel Count: 19			

ASSIGNMENT LIST (ICS 204 WF)

CONTROLLED UNCLASSIFIED
INFORMATION//BASIC

1. Incident Name: <p style="text-align: center; font-size: 1.2em;">Apple</p>	2. Operational Period: Date From: 08/09/20 Date To: 08/10/20 Time From: 0700 Time To: 0700	3. Branch Division <p style="text-align: center; font-size: 1.5em;">V</p> U
---	---	--

4. Operations Personnel:		Page 1 of 1	Uniform
Operations Section Chief: D. Willis/ P. Russell/ M. Hanley(T)/ P. Robello(T)	Night Ops: K. Gurrola		
Branch Director: S. Prather/ J. Eichamer(T) J. Pierce (Night)	Branch Safety: Labak, Begay, Phillips, Faulkner (night)		
Division/Group Supervisor: B. Tai	Air Attack:		

5. Resources Assigned:	** Resources Below in Bold are 12 Hour **						
Resource Identifier	ALS	LWD	Leader	Personnel	Request #	Hours	Reporting Location
CRW1 BIG BEAR IHC			Deets	18	C-21	0700-1900	Reporting Location
IHC						0700-0700	Reporting Location
CRW2IA COBRAS 4			Rogelio	20	C-50026	0700-1900	Reporting Location
STC RRU 9310C			White, Bryan W	18	E-132	0700-0700	Reporting Location
W/T2 PVT E-81 - DOC'S			Vaine	2	E-81	0700-0700	Reporting Location
W/T2 PVT E-83 - DUST			Molina	2	E-83	0700-0700	Reporting Location
FEMT CHAVEZ		8/18	Chavez, Emmanuel	1	O-258	0700-0700	Reporting Location
FEMP KUNTZ		8/18	Kuntz, Dustin	1	O-248	0700-0700	Reporting Location

6. Work Assignments:
 Task - Construct direct and indirect fireline in the vicinity of the Whitewater drainage if feasible from Red Dome to Hell For Sure Canyon.
 Purpose - To limit fire spread and protect values at risk in Rimrock/Pioneertown.
 End State - Fire footprint is minimized and values at risk are not impacted.

7. Special Instructions:
 Wilderness and Roadless: NO dozers allowed. Chainsaws, helispots, retardant and handlines allowed.
 READ/REAF (ARCH) Lynn Robinson will operate throughout Branch V.
 Use the repeater which gives you the best reception.

8. Communications

Name	Ch	Function	Rx Freq	Rx Tone	Tx Freq	Tx Tone	Notes
NIFC C1	1	COMMAND	170.9750	T1 - 110.9	168.7000	T1 - 110.9	Linked (Morton Lookout)
CDF T26	8	TACTICAL	159.2925	192.8 (T16)	159.2925	192.8 (T16)	
A/G TACTICAL	14	A/G TACTICAL	173.0875	110.9 (T1)	173.0875	110.9 (T1)	
CALCORD	15	MEDICAL	156.0750N		156.0750N	156.7 (T6)	
AIRGUARD	16	GUARD V8	168.6250		168.6250	110.9 (T1)	Emergency Ground to Air ONLY

9. Prepared by: Name: Ryan Villarino RESL Signature:
ICS 204 Date/Time: 8/8/2020 2200 Personnel Count: 62

ASSIGNMENT LIST (ICS 204 WF)

CONTROLLED UNCLASSIFIED
INFORMATION/BASIC

1. Incident Name:	2. Operational Period:	3. Branch	Division
Apple	Date From: 08/09/20 Date To: 08/10/20 Time From: 0700 Time To: 0700	V	X/Y
4. Operations Personnel:		Page 1 of 2	X-ray/Yankee

Operations Section Chief: D. Willis/ P. Russell/ M. Hanley(T)/ P. Robello(T)	Night Ops: K. Gurrola
Branch Director: S. Prather/ J. Eichamer(T) J. Pierce (Night)	Branch Safety: Labak, Begay, Phillips, Faulkner (night)
Division/Group Supervisor: R. Valles	Air Attack:

5. Resources Assigned:		** Resources Below in Bold are 12 Hour **					
Resource Identifier	ALS	LWD	Leader	Personnel	Request #	Hours	Reporting Location
IHC						0700-0700	ICP
STG BDU 9353G			Lancaster, Richard	33	C-14	0700-0700	ICP
STG FKU 9435G			Castillo, Robert	28	C-15	0700-0700	ICP
STG SLU 9342G			Ramler	33	C-13	0700-0700	ICP
CRW2 PACIFIC OASIS		8/21	Dodds, Leland	20	C-50030	0700-1900	ICP
CRW2 FRANCO 14		8/21	Cisneros	20	C-50031	0700-1900	ICP
CRW2 FRANCO 16		8/21	Francis, Franco	20	C-50032	0700-1900	ICP
CRW2 PAT RICK			Teal, R.		C-50028	1900-0700	ICP
CRW2 GRAYBACK 21			Adams, Jacob	20	C-50029	1900-0700	ICP
CRW2 FRANCO 6		8/21	Townsend, Leonard	20	C-50034	1900-0700	ICP
CRW2 FRANCO 7			Rash, Leo	20	C-50033	1900-0700	ICP
STC LNU 9140C			Latta, Aaron	18	E-196	0700-0700	ICP
STC AEU 9270C			Hill, Matt	18	E-167	0700-0700	ICP
STC BDU 9350C			Thogmartin, Travis	18	E-44	0700-0700	ICP
STC BDU 9351C			Lemm, Travis	18	E-54	0700-0700	ICP
DOZ PVT E-220 - CGS INC			Borher	2	E-220	0700-0700	ICP
DOZ PVT E-223 - WITT			Witt, Clifford	2	E-223	0700-0700	ICP
DOZ PVT E-224 - BARTLETT			Bartlett, Greg	2	E-224	0700-0700	ICP
W/T2 PVT E-84 - GASSAWAY			Gassaway	2	E-84	0700-0700	ICP
W/T2 PVT E-229 - J & M			Gregerson	2	E-229	0700-0700	ICP

6. Work Assignments:
 Task - Mop up and hold division.
 Purpose - Confine fire to existing lines.
 End State - Fire will remain within existing lines.

7. Special Instructions:
 READ/REAF (ARCH) Lynn Robinson will operate throughout Branch V.
 Use the repeater which gives you the best reception.

8. Communications							
Name	Ch	Function	Rx Freq	Rx Tone	Tx Freq	Tx Tone	Notes
NIFC C1	1	COMMAND	170.9750	T1 - 110.9	168.7000	T1 - 110.9	Linked (Morton Lookout)
NIFC T7	11	TACTICAL	168.2500N	110.9 (T1)	168.2500N	110.9 (T1)	
A/G TACTICAL	14	A/G TACTICAL	173.0875	110.9 (T1)	173.0875	110.9 (T1)	
CALCORD	15	MEDICAL	156.0750N		156.0750N	156.7 (T6)	
AIRGUARD	16	GUARD V8	168.6250		168.6250	110.9 (T1)	Emergency Ground to Air ONLY

9. Prepared by: Name: Ryan Villarino RESL
 Signature: Personnel Count: 294

ASSIGNMENT LIST (ICS 204 WF)

CONTROLLED UNCLASSIFIED
INFORMATION//BASIC

1. Incident Name: <p style="text-align: center; font-size: 1.2em;">Apple</p>	2. Operational Period: Date From: 08/09/20 Date To: 08/10/20 Time From: 0700 Time To: 0700	3. Branch Division <p style="text-align: center; font-size: 1.5em;">VII</p> <p style="text-align: center; font-size: 1.2em;">Suppression Repair</p>
4. Operations Personnel:		Page 1 of 2

Operations Section Chief: D. Willis/ P. Russell/ M. Hanley(T)/ P. Robello(T)	Night Ops: K. Gurrola
Branch Director: A. Benett<12> K. Kremensky<12> (Night)	Branch Safety: Begay, Shuler, Barnhart (night)
Division/Group Supervisor: A. Bennett<12>	Air Attack:

5. Resources Assigned:	** Resources Below in Bold are 12 Hour **							
Resource Identifier	ALS	LWD	Leader	Personnel	Request #	Hours	Reporting Location	
STG RRU 9314G			Kirby	33	C-3	0700-1900		
CRW1 OAK GLEN 2			Nurwine	17	C-5	0700-1900		
DOZ PVT E-67 WEAVER WCBOO2		8/14		2	E-67	0700-1900		
DOZ PVT E-68 WEAVER KPZ1006		8/14		2	E-68	0700-1900		
DOZ E-216 - PETER VAN GAALE			Van Gaale	2	E-216	0700-1900		
DOZ PVT E-219 - ZX AG SOLUTION			Nieblas	2	E-219	0700-1900		
DOZ PVT E-221 - GILL CATTLE			Gill	2	E-221	0700-1900		
W/T2 PVT E-78 - BLACK			Kinsey	2	E-78	0700-1900		
W/T2 PVT E-82 - WILDLAND		8/15	Avedis	2	E-82	0700-1900		
W/T1 PVT E-228 - CLASS			Tareleto	2	E-228	0700-1900		
W/T PVT E-50131 BAY AREA			Acker, Jim	2	E-50131	0700-1900		
EXC2			EXC with Thumb			0700-1900		
EXC2			EXC with Thumb			0700-1900		
GRD2						0700-1900		
CHIP						0700-1900		
CHIP						0700-1900		

6. Work Assignments:
Task - Implement Suppression Repair procedures as directed by Resource Advisors.

7. Special Instructions:
Use the repeater which gives you the best reception.

8. Communications							
Name	Ch	Function	Rx Freq	Rx Tone	Tx Freq	Tx Tone	Notes
NIFC C1	1	COMMAND	170.9750	T1 - 110.9	168.7000	T1 - 110.9	Linked (Morton Lookout)
CDF T27	9	TACTICAL	159.3075	192.8 (T16)	159.3075	192.8 (T16)	
A/G TACTICAL	14	A/G TACTICAL	173.0875	110.9 (T1)	173.0875	110.9 (T1)	
CALCORD	15	MEDICAL	156.0750N		156.0750N	156.7 (T6)	
AIRGUARD	16	GUARD V8	168.6250		168.6250	110.9 (T1)	Emergency Ground to Air ONLY

9. Prepared by: Name: Ryan Villarino RESL
Signature: Personnel Count: 68

ICS 204

Date/Time: 8/8/2020 2200

ASSIGNMENT LIST (ICS 204 WF)

CONTROLLED UNCLASSIFIED
INFORMATION//BASIC

1. Incident Name: <p style="text-align: center; font-size: 1.2em;">Apple</p>	2. Operational Period: Date From: 08/09/20 Date To: 08/10/20 Time From: 0700 Time To: 0700	3. Branch Division <p style="text-align: center; font-size: 1.5em;">VII</p> <p style="text-align: center; font-size: 1.2em;">Suppression Repair</p>
4. Operations Personnel:		Page 2 of 2

Operations Section Chief: D. Willis/ P. Russell/ M. Hanley(T)/ P. Robello(T)	Night Ops: K. Gurrola
Branch Director: A. Benett<12> K. Kremensky<12> (Night)	Branch Safety: Begay, Shuler, Barnhart (night)
Division/Group Supervisor: A. Bennett<12>	Air Attack:

5. Resources Assigned:	** Resources Below in Bold are 12 Hour **							
Resource Identifier	ALS	LWD	Leader	Personnel	Request #	Hours	Reporting Location	
HEQB Peterson			Peterson, R.	1	O-169	0700-1900		
HEQB WATNER			Watner, Mike	1	O-171	0700-1900		
FOBS FELLER			Feller, Pete L	1	O-318	0700-1900		
FOBS MAGNUS					O-316	0700-1900		
FOBS MCBRIDE			Mcbride, Ian	1	O-121	0700-1900		
FOBS NOYES			Noyes, Colin J	1	O-100	0700-1900		
FOBS SHEW			Shew, Nicholas	1	O-119	0700-1900		
FSRS ERICKSON			Erickson, Dave		O-364	0700-1900		
ARCH CARVER			Carver, Larrynn		O-50305	0700-1900		
ARCH RUZICKA			Ruzicka, Denise	1	O-331	0700-1900		
THSP GNADT			GnadT, Casey		O-358	0700-1900		
THSP ARMSTRONG			Armstrong, Travis		O-332	0700-1900		

6. Work Assignments:
Task - Implement Suppression Repair procedures as directed by Resource Advisors.

7. Special Instructions:
Use the repeater which gives you the best reception.

8. Communications

Name	Ch	Function	Rx Freq	Rx Tone	Tx Freq	Tx Tone	Notes
NIFC C1	1	COMMAND	170.9750	T1 - 110.9	168.7000	T1 - 110.9	Linked (Morton Lookout)
CDF T27	9	TACTICAL	159.3075	192.8 (T16)	159.3075	192.8 (T16)	
A/G TACTICAL	14	A/G TACTICAL	173.0875	110.9 (T1)	173.0875	110.9 (T1)	
CALCORD	15	MEDICAL	156.0750N		156.0750N	156.7 (T6)	
AIRGUARD	16	GUARD V8	168.6250		168.6250	110.9 (T1)	Emergency Ground to Air ONLY

9. Prepared by: Name: Ryan Villarino RESL Signature:

ICS 204 Date/Time: 8/8/2020 2200 Personnel Count: 7

AIR OPERATIONS SUMMARY
ICS 220

Prepared By: Terry Harris
 AOB

Prepared Date: 8/8/2020

Prepared Time: 1600

1. INCIDENT NAME: Apple	2. OPS PERIOD DATE: 08/09-0102020 0700 - 0700	START TIME: Night 1930 Day 0730	END TIME: Night 0730 Day 2000	SUNRISE: 0604	SUNSET: 1942
-------------------------	--	---------------------------------------	-------------------------------------	------------------	-----------------

3. REMARKS (Safety Notes, Hazards, Air Operations Special Equipment, etc.): Track all dipsite locations/number of dips/gallons taken. Track all drop locations/number of drops/gallons dropped. All GPS data to be collected in DEGREES, DECIMAL MINUTES format.
 AVOID Aerial Application of Retardant/Foam/Agent within 300' of Waterways, Bodies of Water, etc.
 If Retardant/Foam/Agent is dropped within these areas immediately notify the AOB and provide the following information: Lat/Long, estimated number of gallons and a map detailing the area.
 Casino Mobile Retardant Plant 33 55.4 116 48.23
 Mountain Gate Retardant Plant 34 4.445 117 2.888
 Fly with Transponder 1255.

4. Helibase Information:
 Name: Redlands Airport
 Banning Airport

5. TFR's:
 Request #: 0/0121
 Altitude: NOTAMS:
 Frequency: 119.175
<http://tfr.faa.gov/tfr2/list.html>

6. PERSONNEL	NAME	PHONE #	7. FREQUENCIES				TX	TONE	RX	TONE	AM/FM	8. MEDIVAC SHIP INFORMATION	
			FREQUENCIES	TX	TONE	T						MAKE/MODEL	BASE
AOBD	Terry Harris	936-366-4239										Day:	Night:
ASGS	Kelvin McElfish	909-907-2677	A-G Command	171.9125	110.9	171.9125		171.9125		FM		Refer to Medical Plan	
ASGS	Jeremy Czapsinski	619-818-2735	A-G TAC	173.0875	110.9	173.0875		173.0875		FM			
HEB (Banning)	Jarrod Collins	858-353-6261	DECK (KBNG)	163.1000									
HEB (Redlands)	Gerry Granados	323-215-5053	BRIEFING	123.7750							AM	Or secondary Rotor Wing	
HEB (t)	Jael Constanto	619-536-3480	DECK (RED)	168.350									
			TOLC	123.025									
ATGS (504)	Josh Campbell	559-281-4314	AIR TACTICS	165.9875				165.9875		FM			
ATGS 12	Doug Ross	951-288-5372	AIR GUARD	168.6250	110.9	168.6250		168.6250		FM			
ATGS 52	Fred Burris	805-340-0408	BDF Admin Rep	172.2250	103.5	164.1375		164.1375	103.5	FM		ATGS FF/AC REQUEST	
ATGS 51	Brian Baker	530-394-8110											
2 BRAVOS													

HELICOPTERS

FAA #	T	MAKE/ MODEL	BASE	START	AVAI L	REMARKS	FAA #	T	MAKE/MODEL	BASE	START	AVAIL	REMARKS
531	2	Bell 205 ++	KBNG	1900	1930	EU (NIGHT)							
9122Z	2	Bell 212	KBNG	0700	0730	EU							
3PA	2	Bell 212	KBNG	0700	0730	CWN	4PG	1	UH60	RED	0700	0730	EU
5CK	1	S-61	KBNG	0700	0730	CWN	5BH	1	S-370	RED	0700	0730	CWN
0HT	1	S-64	KBNG	0700	0730	EU	7BH	1	S-370	RED	0700	0730	CWN
40CU	1	CH47	KBNG	0700	0730		4PJ	1	UH60	RED	0700	0730	EU

Terry Harris

839PA	3	ASTAR	KBNG	0700	0730	EU (HELCO)	9CU	1	CH47	RED	0700	0730	EU
538	2	Bell 205++	KBNG	0700	0730	EU	5CH	1	BV207	RED	0700	0730	CWN
555AS	3	Bell 407	KBNG	0700	0730	EU (HELCO)				RED			WT 222CNF
534	2	Bell 205++	KBNG	0700	0730	EU				RED			E7816
3HT	1	S-64	KBNG	0700	0730	EU							
5AJ	1	CH-47	KNGB	0700	0730	EU							
535	3	Bell 407	KNGB	0700	0730	EU							
520	2	Bell 205++	KNGB	0700	0730	EU							
						E-21 Dust Buster							
						E3113							

FIXED WING

FAA N#	T	MAKE/MODEL	BASE	START	AVAIL	REMARKS	FAA N#	T	MAKE/MODEL	BASE	START	AVAIL	REMARKS
504		KING AIR 200	HEMET	0730	0800	ATGS	AA 51		KING AIR 200	SBD	1900	1930	NIGHT ATGS
AA-12		AERO COMM	SBD	0730	0800	ATGS							
AA-52		AERO COMM	SBD	0730	0800	ATGS							

INCIDENT RADIO COMMUNICATIONS PLAN		Incident Name			Date/Time Prepared		Operational Period Date/Time		
		Apple Fire			8/8/20 1845		8/9/20 0700 TO 8/10/20 0700 24 Hour		
		UNCLASSIFIED INFORMATION //BASIC			CONTROLLED				
Ch #	Function	Channel Name/Trunked Radio System Talkgroup	Assignment	RX Freq	RX Tone/NAC	TX Freq	Tx Tone/NAC	Mode A, D or M	Remarks
1	COMMAND	NIFC C1	All Divisions	170.9750	110.9 T1	168.7000	110.9 T1	A	Linked (Morton Lookout)
2	COMMAND	NIFC C9	All Divisions	170.0125	110.9 T1	165.2500	110.9 T1	A	Linked (Snow Peak)
3	COMMAND	NIFC C12	All Divisions	173.0375	110.9 T1	167.3250	110.9 T1	A	Linked (Black Mt. Lookout)
4	COMMAND	NIFC C32	All Divisions	171.0875	110.9 T1	164.0125	110.9 T1	A	Linked (Twin Sisters)
5	COMMAND	NIFC C4	All Divisions	170.0000	110.9 T1	166.6750	110.9 T1	A	Linked (Rock)
6	TACTICAL	CDF T18	L/O, R, I, T	159.3450	192.8 T16	159.3450	192.8 T16	A	
7	TACTICAL	CDF T25	DIV, F	159.2775	192.8 T16	159.2775	192.8 T16	A	
8	TACTICAL	CDF T26	DIV, U	159.2925	192.8 T16	159.2925	192.8 T16	A	
9	TACTICAL	CDF T27	Supp Repair	159.3075	192.8 T16	159.3075	192.8 T16	A	
10	TACTICAL	R5 T6	DIV, AZ, Staging	168.2375	110.9 T1	168.2375	110.9 T1	A	
11	TACTICAL	NIFC T7	DIV, XY	168.2500	110.9 T1	168.2500	110.9 T1	A	
12	TACTICAL	VFIRE 26	Structure Groups	154.3025	156.7 T6	154.3025	156.7 T6	A	
13	Air to Ground	A/G CMD	A/G COMMAND	171.9125		171.9125	110.9 T1	A	Div Sup and Above
14	Air to Ground	A/G TACTICAL	A/G TACTICAL	173.0875		173.0875	110.9 T1	A	
15	Medical	CALCORD	All Divisions	156.0750		156.0750	T6 156.7	A	
16	Air Guard	GUARD 8	All Divisions	168.6250		168.6250	T1 110.9	A	Emergency Ground to Air ONLY
CONTROLLED UNCLASSIFIED INFORMATION //BASIC									
Prepared By (Communications Unit)					County: San Bernardino/Riverside				
Kevin Harper, COML 661-330-0209 APPLE COMMUNICATIONS 310-617-7553									

SUPPRESSION REPAIR WORK GENERAL GUIDELINES

Project Name: **APPLE FIRE**

Division Location	Type of Work	Description of Repair Work
All Divisions	Backhaul Trash	Check for discarded waste, haul out and dispose. Remove all flagging and signage from suppression at the end of suppression repair activities.
All Divisions	Safety Zone Repair	Break up dozer piles over safety zone. Water bar as needed per specifications. Chip and pull back native material and vegetation, as needed.
All Divisions	Hand Line Repair	Pull back brush on all hand lines intersecting roads and trails, for 100' minimum or as appropriate to obscure view of hand lines. Water bar as appropriate.
Branch I Div. F Div. A Branch VII Div. Z Div. Y	Road Repair	All dirt roads used in the suppression effort should be graded as needed consistent with direction from SBNF Engineering. These actions may include: cleaning culverts and drains of debris and dirt, pulling back berms where dozers graded on roads and two-track roads, and chipping all cut vegetation along roads.
Branch I Div. F, A Branch VII Div. Z, Y, X	Dozer Line Repair	Pull back berms, re-contour and cover with cut vegetation or chips. Create waterbars where needed to specifications. Clean out all watercourses of all sediment, rocks, and vegetation debris as appropriate.
All Divisions	Hazard/Felled Tree Action	Flush cut/re-cut felled hazard tree stumps
Branch III Branch V	Wilderness Spike Camps	Follow MIST guidelines and the Wilderness READ direction
Branch I, III, VII	Retardant Reporting (FS only)	Report all retardant or foam applications within 300 feet of waterways or mapped avoidance areas to the Resource Advisors.

INCIDENT MESSAGES

TRAINING SPECIALIST

An Incident Training Specialist is assigned and will be performing the duties "virtually".

To assure proper documentation for your assignment:

- 1) Scan Incident QR Code (On IAP and posted around camp).
- 2) Go to Training Folder.
- 3) Complete Trainee Registration Form.

At the end of your assignment:

1. **Trainee:** Complete the exit interview found in the Training folder. Use the incident QR code to access the document (same way you signed up).
2. **Trainer:** Fill in the Position Task Book as completely as possible for this incident.
3. **Trainer:** Complete the ICS 225 performance evaluation and discuss with your Trainee. Make sure it's signed by both the Trainer and Trainee. Take a picture of the ICS 225 and send it to imt2training@gmail.com
- 4) The Training Specialist will send the training documents to the email address you provided.
- 5) For training related questions, call/text Dominic Panno (TNSP) at 530-913-8251 or email imt2training@gmail.com

BASE CAMP - YUCAIPA REGIONAL PARK - 33900 Oak Glenn Road, Yucaipa

PUBLIC INFORMATION MESSAGE

Posting fireline pictures to personal social media is not allowed.

Please e-mail pictures to 2020.apple@firenet.gov and we would be happy to post and share for you!

CAL FIRE FINANCE

Please turn times in to Finance. See example shift tickets.

FEDERAL FINANCE

Engines and Crews: Submit manifests to Finance either paper copy or email at Jennifer.white@usda.gov

All personnel submit times to Finance. A Finance representative will be at Yucaipa Camp (after briefing).

DIVISION/GROUP SUPERVISORS

- Please turn in a copy of your 204 each day to Finance or email to Abigail.olearyenterline@fire.ca.gov
- Note any resource changes or movements that left or came to your division during the operational period
- Print and sign your name
- Include our phone number and date
- We do not need the % breakdown of Fed/State DPA

HUMAN RESOURCE SPECIALIST

Greetings,

My name is Ryan Voelkl and I am the Human Resource Specialist (HRSP) assigned to the Apple Incident. As the HRSP, I am available to Incident personnel to provide assistance with a wide range of issues that may be impacting the work environment, such as conflict resolution and addressing any allegations of misconduct.

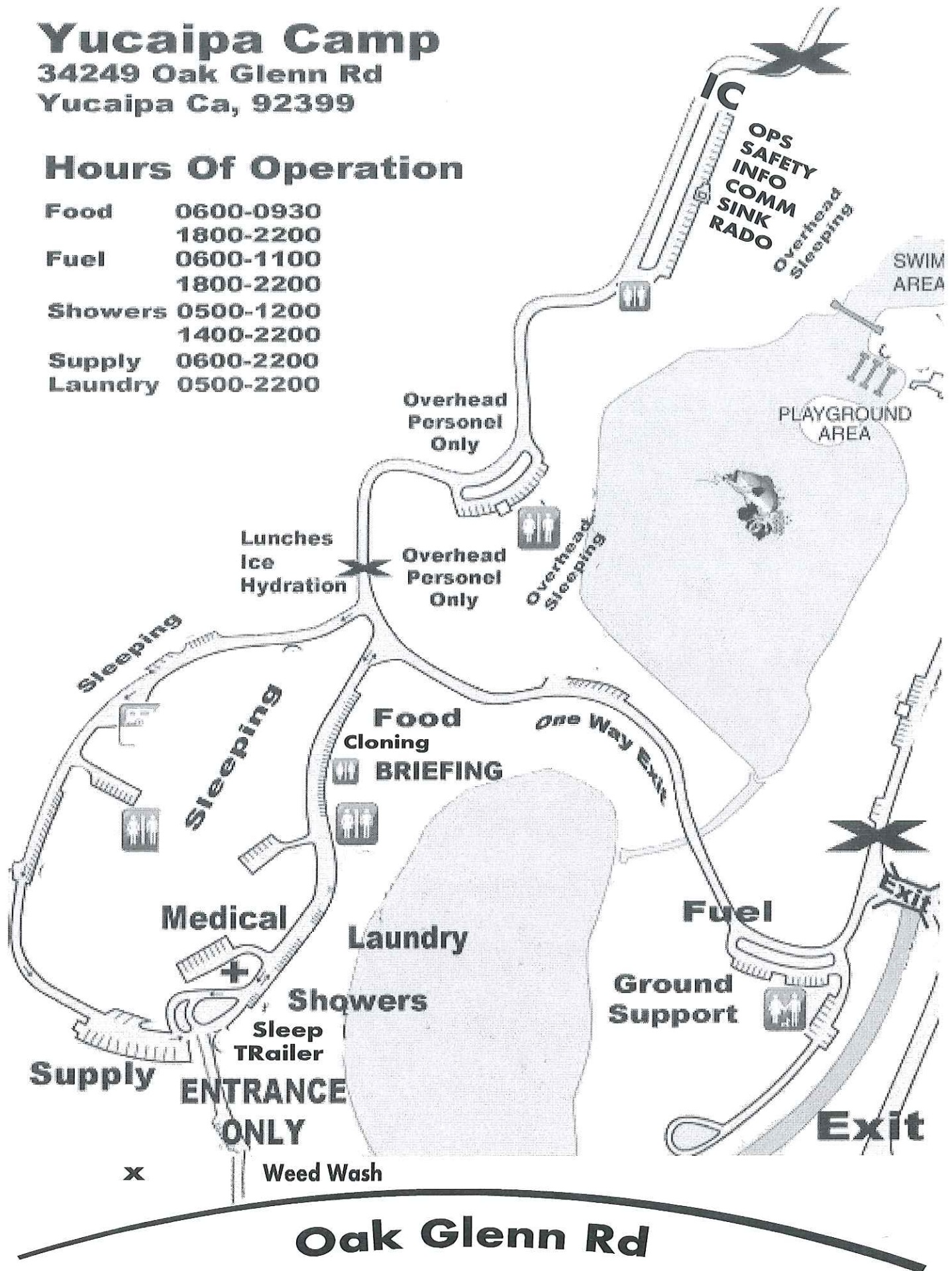
I am located at Yucaipa Regional Park camp on Main Street. If you can't come to me, I can come to you! Just text or call me at 530-457-7276.

Yucaipa Camp

34249 Oak Glenn Rd
Yucaipa Ca, 92399

Hours Of Operation

Food	0600-0930
	1800-2200
Fuel	0600-1100
	1800-2200
Showers	0500-1200
	1400-2200
Supply	0600-2200
Laundry	0500-2200



APPLE CAMP

390 WEST OAK VALLEY ROAD
BEAUMONT, CA 92223

FOOD	0600-0930 1800-2200
FUEL	0600-1100 1800-2200
SHOWERS	0500-1200 1400-2200
SUPPLY	0600-2200
LAUNDRY	0500-2200

SHOWERS SLEEPERS

ENGINE PARKING

GROUND
SUPPORT

LUNCH HYDRATION

MEETING
TENT

CREW
SLEEPING

FOOD

Noble Creek
Regional Park

MAIN STREET

SUPPLY

OVERHEAD
SLEEPING

BRIEFING

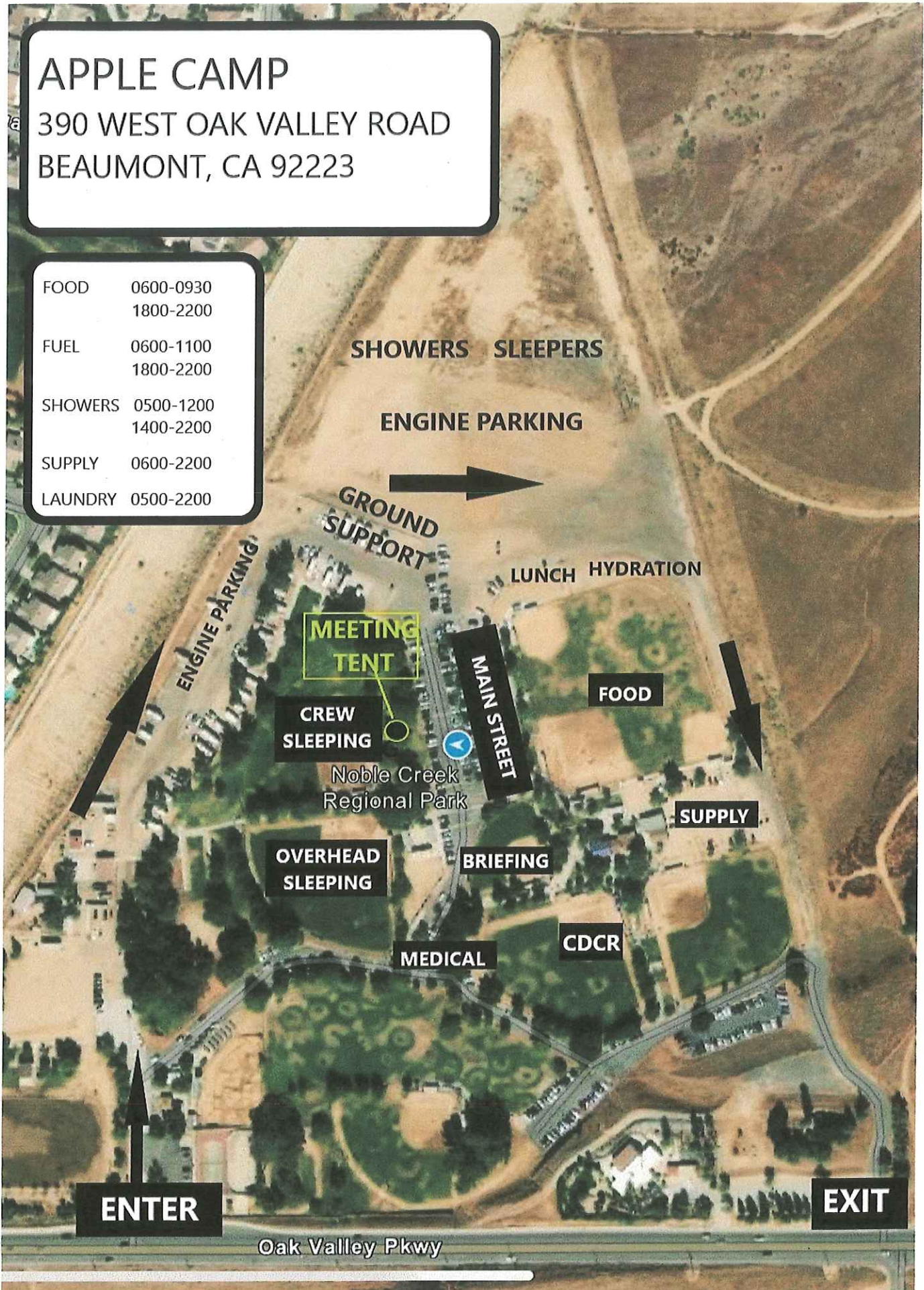
CDCR

MEDICAL

ENTER

EXIT

Oak Valley Pkwy



ACTIVITY LOG (ICS 214)

1. Incident Name: _____		2. Operational Period: Date From: _____ Date To: _____ Time From: _____ Time To: _____	
3. Name: _____	4. ICS Position: _____	5. Home Agency (and Unit): _____	
6. Resources Assigned:			
Name	ICS Position	Home Agency (and Unit)	
7. Activity Log:			
Date/Time	Notable Activities		
8. Prepared by: Name: _____ Position/Title: _____ Signature: _____			
ICS 214, Page 1		Date/Time: _____	

MEDICAL PLAN	1. INCIDENT NAME: Apple	2. DATE PREPARED: August 8, 2020	3. TIME PREPARED: 1920	4. OPERATIONAL PERIOD 08/09/20 – 08/10/20 0700-0700
---------------------	-----------------------------------	--	---------------------------	--

5. INCIDENT MEDICAL AID STATIONS			
MEDICAL AID STATIONS	LOCATION	ALS	
		YES	NO
Frontline Medical	Yucaipa Camp – 34249 Oak Glen Rd, Yucaipa	X	
Frontline Medical	ICP – Noble Creek Park – 390 Oak Valley Parkway, Beaumont	X	
MERT	ICP – Noble Creek Park – 390 Oak Valley Parkway, Beaumont	X	

6. TRANSPORTATION				
A. Ambulance Services				
NAME	LOCATION	PHONE	ALS	
			Yes	No
Big Bear Ambulance	Yucaipa Camp	951-203-2513	X	
CAL Fire San Bernardino	Yucaipa, Highland, Oak Glen	800-992-4494	X	
CAL Fire Riverside - Perris Command Center	Riverside County	951-940-6949	X	
COMM Center – San Bernardino	San Bernardino County	909-356-3805	X	

B. AIR AMBULANCE				
NAME	LOCATION	ALS		
		YES	NO	
IWI in San Bernardino Co.- COMM Center 909-356-3805	IWI in Riverside Co.-CAL Fire Riverside/Perris 951-940-6949			
OCFA Copter 1– ALS/ Hoist 250'/ NVG/ Avail 24-hours	Fullerton	X		
Reach – NVG / Avail 24 hr.	Victorville	Direct 800-338-4045	X	
Mercy Air – NVG / Avail 24 hr.	San Bernardino	Direct 800-222-3456	X	
Care Flight – NVG / Avail 24 hr.	Big Bear Airport	Direct 800-800-0900	X	
CHP H80 or H82 – ALS /160' Hoist/ NVG/ Avail 0600-0000	Apple Valley	Direct 760-240-8004	X	
CHP H60 - ALS /Hoist 150' / NVG/ Avail 0600-0200	Thermal	Direct 760-984-5300	X	
S.B. Sheriff 40 King- BLS/ Hoist 150'/ NVG/ Avail 1400-0000	Apple Valley	Direct 909-387-8313		X
S.B. Sheriff AR 8- ALS/ Hoist 250'/ NVG/ Avail 0600-1800	San Bernardino	Direct 909-387-8313	X	

7. HOSPITALS										
NAME	ADDRESS	TRAVEL TIME		PHONE	TRAUMA		HELIPAD		BURN CENTER	
		AIR	GRND		Yes	No	YES	NO	YES	NO
Arrowhead Regional Thomas Bros-SB 576 A-5	400 N. Pepper Ave. Colton, CA 34° 04.55' N x 117° 20.95' W	15 Min	35 Min	909-580-1357 ER 909-580-4356 Charge	L-II		X			X
Loma Linda (AV) Thomas Bros-SB 647 B-1	11234 Anderson St. Loma Linda 34° 2.93' N x 117° 15.83' W	10 Min	30 Min	909-558-4444 ER 909-558-7911 MICN	L-I		X			X
Desert Regional (AV) Thomas Bros-RIV 726 E-7	1150 N. Indian Cyn Palm Springs 33° 50.30' N x 116° 32.63' W	10 Min	35 Min	760-323-6251 ER	L-II		X			X
Riverside University (AV) Thomas Bros-RIV 718 B-6	26520 Cactus Ave Moreno Valley 33° 54.82' N x 117° 11.79' W	10 Min	24 Min	951-486-4962 ER 951-486-4137 MICN	L-II		X			X
Inland Valley (AV) Thomas Bros-RIV 927 G-1	36485 Inland Valley. Wildomar 33° 35.55' N x 117° 14.18' W	15 Min	1 Hour	951-677-9773 ER 951-677-0833 MICN	L-II		X			X

8. MEDICAL EMERGENCY PROCEDURES

LINE "MEDICAL-EMERGENCY" PLAN:

- Crew Supervisor to contact Division Supervisor/Operations with:
 - Patient Complaint, Condition and Location via Tactical or Command frequency. Priority 1/Red & 2/Yellow Patients trigger Incident within Incident (IWI).
- Division Supervisor/Operation contacts Apple Communications:
 - Division Supervisor or POC* will run "Medical –Emergency" on the Command frequency.
 - Division Supervisor of POC* to use "Medical Incident Report" worksheet on back of this page or back of IRPG.
 - Apple Communication contacts Medical Unit Leader on the Command frequency or cell phone (747) 263-4881 (Medical Emergencies Only).

POC* (Point of Contact) and/or Operations

LINE "NON-EMERGENCY INCIDENT" PLAN:

- Crew Supervisor to contact Division Supervisor with:
 - Patient Complaint, Condition and Location via Tactical or Command frequency. **Priority 3/Green Patients do not** trigger Incident within Incident (IWI).
- Division Supervisor contacts Apple Communications:
 - Division Supervisor or POC* will run "Non-Emergency Incident" on the Command frequency.
 - Division Supervisor or POC* will use "Medical Incident Report" worksheet on the back of this page or back of IRPG.
 - Apple Communications contacts Medical Unit Leader on the Command frequency or cell phone (747) 263-4881 (For medical related incidents only).

IN-CAMP – 24 HOUR MEDICAL

- Contact Apple Communications with:
 - Patient Complaint, Condition and Location via LOGS net or Command frequency

9. PREPARED BY Jacob Long – MEDL(1)	10. REVIEWED BY
--	---------------------

Medical Incident Report

FOR A **NON-EMERGENCY INCIDENT**: WORK THROUGH CHAIN OF COMMAND TO REPORT AND TRANSPORT INJURED PERSONNEL AS NECESSARY.

FOR A **MEDICAL EMERGENCY**: IDENTIFY ON SCENE INCIDENT COMMANDER BY NAME AND POSITION AND ANNOUNCE **"MEDICAL EMERGENCY"** TO INITIATE RESPONSE FROM COMMUNICATIONS

Use the following items to communicate situation to communications/dispatch.

1. CONTACT COMMUNICATIONS / DISPATCH (Verify correct frequency prior to starting report)

Ex: "Communications, Div. Alpha. Stand-by for Emergency Traffic."

2. INCIDENT STATUS: *Provide incident summary (including number of patients) and command structure.*

Ex: "Communications, I have a Red priority patient, unconscious, struck by a falling tree.

Requesting air ambulance to Forest Road 1 at (Lat./Long.)

"This will be the Trout Meadow Medical Incident, IC is TFLD Jones. EMT Smith is providing medical care."

Severity of Emergency AND Transport Priority (priority 1, 2, 3)	<input type="checkbox"/> RED / PRIORITY 1 Life or limb threatening injury or illness. Evacuation need is IMMEDIATE <i>Ex: Unconscious, difficulty breathing, bleeding severely, 2° – 3° burns more than 4 palm sizes, heat stroke, disoriented.</i>
	<input type="checkbox"/> YELLOW / PRIORITY 2 Serious Injury or illness. Evacuation may be DELAYED if necessary. <i>Ex: Significant trauma, unable to walk, 2° – 3° burns not more than 1-3 palm sizes.</i>
	<input type="checkbox"/> GREEN / PRIORITY 3 Minor Injury or illness. Non-Emergency transport <i>Ex: Sprains, strains, minor heat-related illness.</i>
Nature of Injury or Illness & Mechanism of Injury	Brief Summary of Injury or Illness <i>(Ex: Unconscious, Struck by Falling Tree)</i>
Transport Request	<i>Air Ambulance / Short Haul/Hoist Ground Ambulance / Other</i>
Patient Location	<i>Descriptive Location & Lat. / Long. (WGS84)</i>
Incident Name	<i>Geographic Name + "Medical" (Ex: Trout Meadow Medical)</i>
On-Scene Incident Commander	<i>Name of on-scene IC of Incident within an Incident (Ex: TFLD Jones)</i>
Crew Patient Care	<i>Name of Care Provider (Ex: EMT Smith)</i>

3. INITIAL PATIENT ASSESSMENT: *Complete this section for each patient as applicable (start with the most severe patient)*

Agency Affiliation: (NO PATIENT NAMES) Federal Contractor Local Government

Patient Assessment: Age: Weight: Chief Complaint:

(If pertinent to Injury) Skin Signs: (color/moisture/temp) Level of Consciousness: BP: HR: Respirations:

Treatment:

4. TRANSPORT PLAN:

Evacuation Location (*drop point, intersection, helispot, Lat. / Long, hazards*) Patient's ETA to Location:

5. ADDITIONAL RESOURCES / EQUIPMENT NEEDS:

Paramedic / EMT - Crews - Immobilization Devices - AED - Oxygen - Trauma Bag - IV/Fluid(s) - Splints - Rope rescue - Wheeled litter - HAZMAT - Extrication

6. COMMUNICATIONS: Identify State Air/Ground EMS Frequencies and Hospital Contacts as applicable

Function	Channel Name/Number	Receive (RX)	Tone/NAC *	Transmit (TX)	Tone/NAC *
COMMAND					
AIR-TO-GRND	Contact on CALCORD When aircraft in line of site	156.0750 N	156.7	156.0750	156.7
TACTICAL					

**7. CONTINGENCY: Considerations: If primary options fail, what actions can be implemented in conjunction with primary evacuation method?
*Be thinking ahead.***

8. ADDITIONAL INFORMATION: *Updates/Changes, etc.*

**REMEMBER: Confirm ETA's of resources ordered. Act according to your level of training
Be Alert - Keep Calm - Think Clearly - Act Decisively**

*** Follow up with MEDL upon return to ICP ***