

Operations-IR

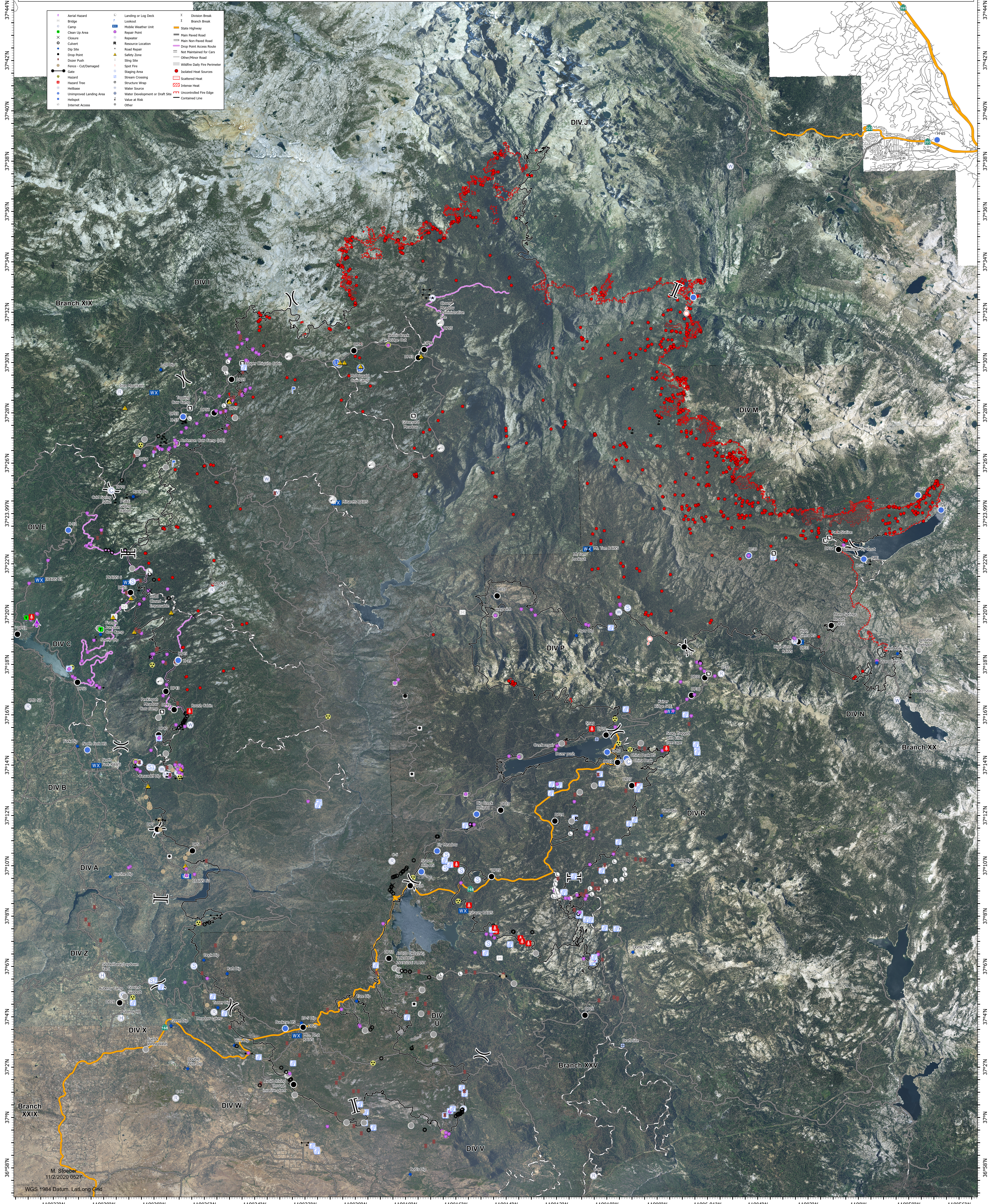
CREEK FIRE
CA-SNF-1391
11/2/2020

GIS Acres 380,664 11/01/20 1500



0 0.5 1 2 3 4 Miles

✦ Aerial Hazard	✦ Landing or Log Deck	✦ Division Break
✦ Bridge	✦ Lookout	✦ Branch Break
✦ Camp	✦ Mobile Weather Unit	✦ State Highway
✦ Clean Up Area	✦ Repair Point	✦ Main Paved Road
✦ Closure	✦ Resource Location	✦ Main Non-Paved Road
✦ Culvert	✦ Road Repair	✦ Drop Point Access Route
✦ Dig Site	✦ Safety Zone	✦ Not Maintained for Cars
✦ Drop Point	✦ Slag Site	✦ Other/Minor Road
✦ Dozer Push	✦ Spot Fire	✦ Wildlife Daily Fire Perimeter
✦ Fence - Cut/Damaged	✦ Staging Area	✦ Isolated Heat Sources
✦ Gate	✦ Stream Crossing	✦ Intense Heat
✦ Hazard	✦ Structure Wrap	✦ Uncontrolled Fire Edge
✦ Hazard Tree	✦ Water Source	✦ Contained Line
✦ Helibase	✦ Water Development or Draft Site	✦ Contained Line
✦ Unimproved Landing Area	✦ Value at Risk	✦ Contained Line
✦ Helispot	✦ Other	
✦ Internet Access		



M. Stoerber
11/2/2020 05Z
WGS 1984 Datum, LatLong Grid