



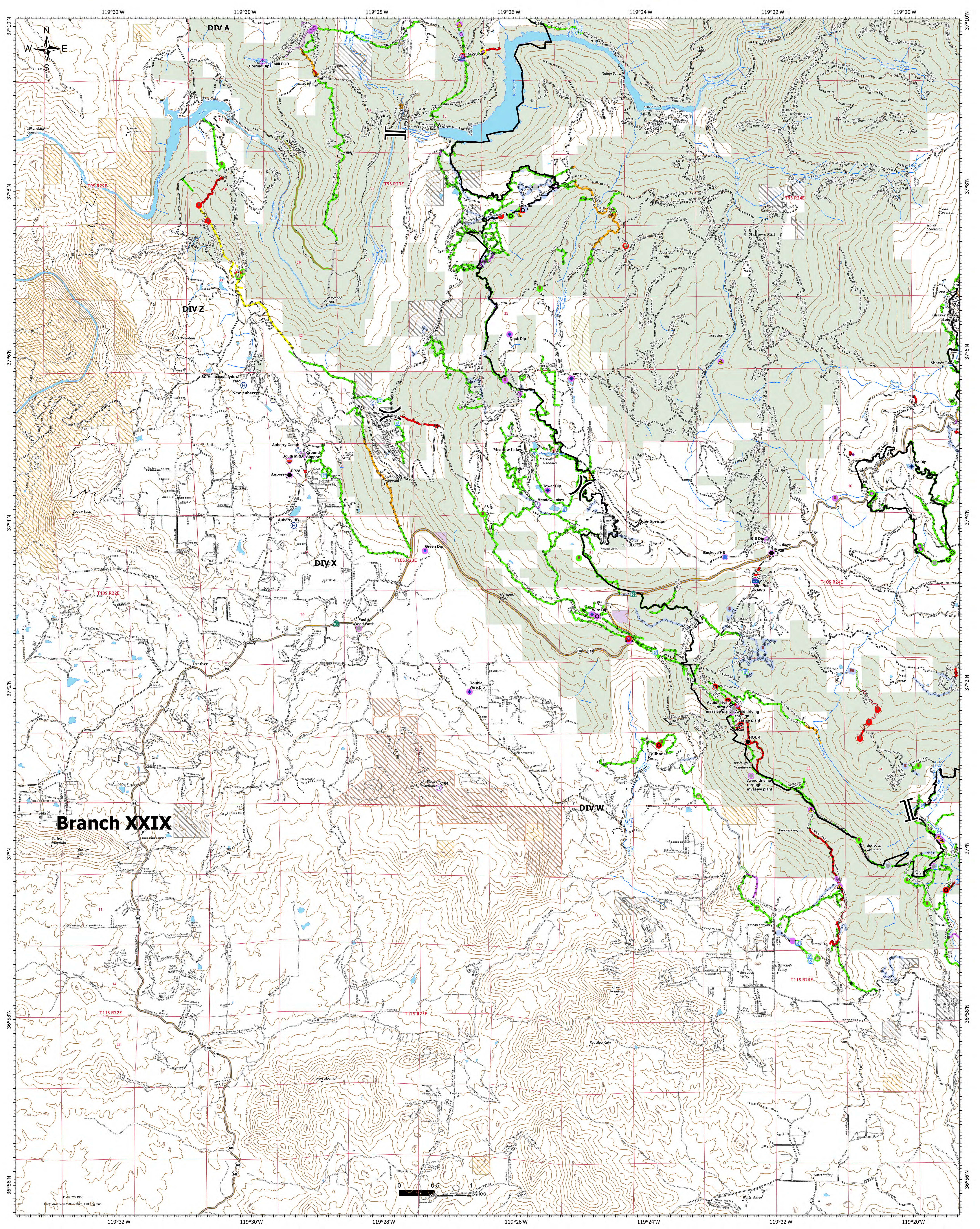
# Branch XXIX

## CREEK FIRE

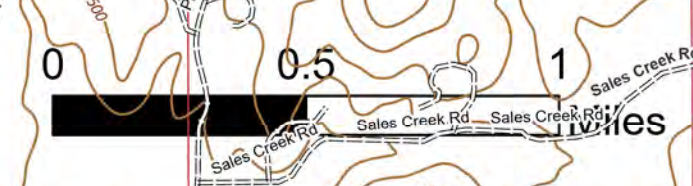
### CA-SNF-1391

#### 11-05-2020

- |   |   |   |   |   |
|---|---|---|---|---|
| <ul style="list-style-type: none"> <li>Completed - Inspected</li> <li>Completed - Ready for Inspection</li> <li>In Progress</li> <li>Repair Needed - See Collector for details</li> <li>No Repair Needed</li> <li>Other - See Comments</li> <li>Unknown</li> <li>Camp</li> <li>Culvert</li> </ul> | <ul style="list-style-type: none"> <li>Dip Site</li> <li>Drop Point</li> <li>Dozer Push</li> <li>Fence - Cut/Damaged</li> <li>Gate</li> <li>Hellbase</li> <li>Hellspot</li> <li>Incident Base</li> <li>Mobile Weather Unit</li> </ul> | <ul style="list-style-type: none"> <li>Repeater</li> <li>Retardant/Mud Pit</li> <li>Road Repair</li> <li>Safety Zone</li> <li>Staging Area</li> <li>Stream Crossing</li> <li>Other</li> </ul> | <ul style="list-style-type: none"> <li>Completed Hand Line</li> <li>Road as Completed Line</li> <li>Access or Improved Road</li> <li>Aerial Retardant Drop</li> <li>Repair Line</li> <li>Road Repair</li> <li>Highway</li> <li>Road - Light Duty - Dirt</li> <li>Road - Light Duty - Gravel</li> <li>Road - Light Duty - Paved</li> </ul> | <ul style="list-style-type: none"> <li>Road - Light Duty - Unspecified Composition</li> <li>Road - Unimproved</li> <li>Trail</li> <li>USDA Forest Service</li> <li>Bureau of Indian Affairs</li> <li>Bureau of Land Management</li> <li>Non-Federal Conserves and Trusts</li> <li>Other Federal Lands</li> <li>Other State Lands</li> </ul> |
|---|---|---|---|---|



**Branch XXIX**



11/1/2020 1056  
North American 1983 Datum, Lat/Long Grid