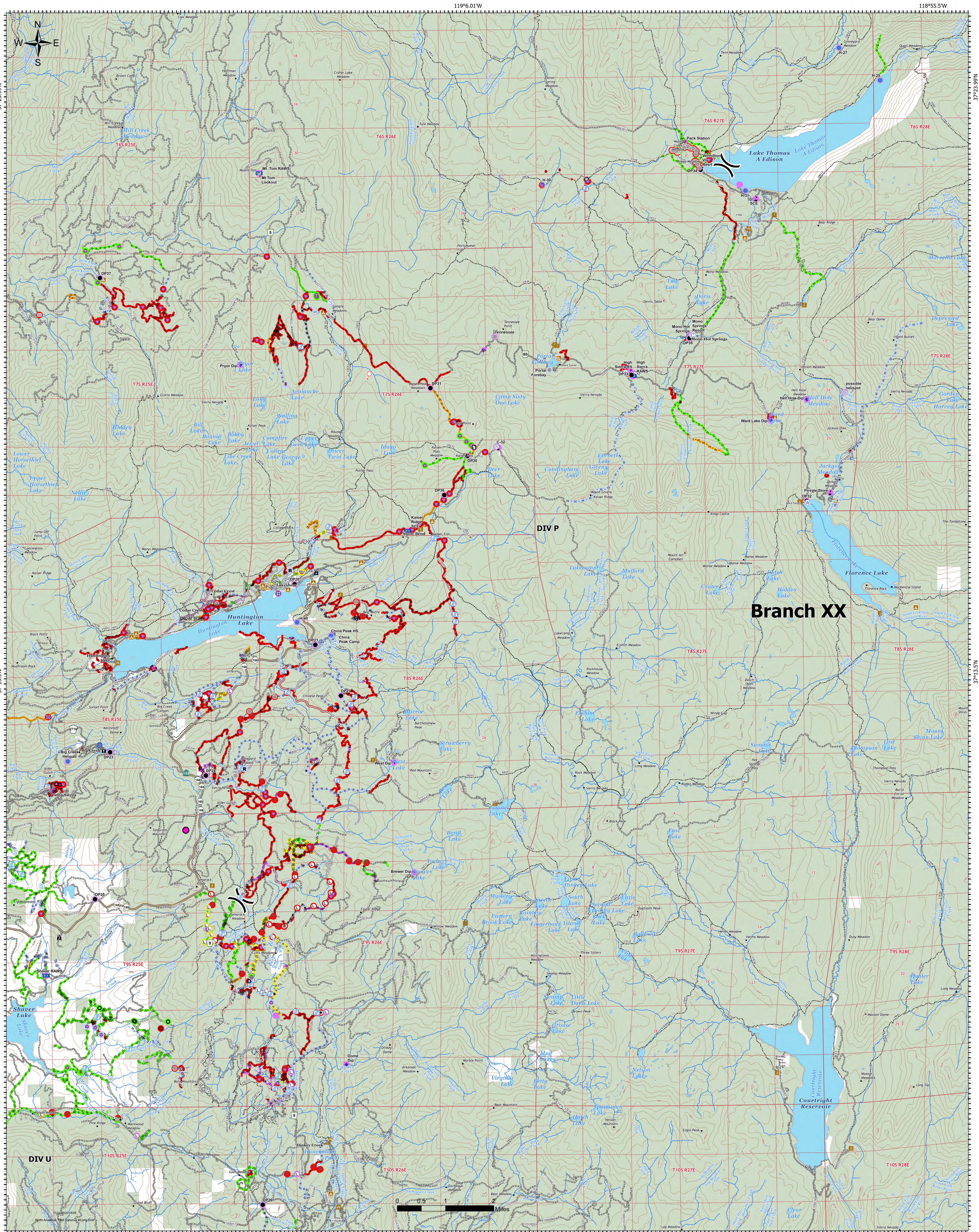




# Branch XX South

CREEK FIRE  
CA-SNF-1391  
11-15-2020

- |   |  |  |  |
|---|--|--|--|
| <ul style="list-style-type: none"> <li>Repair Status</li> <li>Completed - Inspected</li> <li>Completed - Ready for Inspection</li> <li>In Progress</li> <li>Repair Needed - See Collector for details</li> <li>No Repair Needed</li> <li>Other - See Comments</li> <li>Unknown</li> <li>Camp</li> </ul> | <ul style="list-style-type: none"> <li>Culvert</li> <li>Dip Site</li> <li>Drop Point</li> <li>Dozer Push</li> <li>Fence - Cut/Damaged</li> <li>Gate</li> <li>Helispot</li> <li>Landing or Log Deck</li> <li>Mobile Weather Unit</li> <li>Repair Point</li> </ul> | <ul style="list-style-type: none"> <li>Repeater</li> <li>Resource Location</li> <li>Road Repair</li> <li>Sling Site</li> <li>Spot Fire</li> <li>Staging Area</li> <li>Stream Crossing</li> <li>Structure Wrap</li> <li>Water Source</li> <li>Water Development or Draft Site</li> <li>Value at Risk</li> <li>Other</li> <li>Division Break</li> <li>Completed Hand Line</li> </ul> | <ul style="list-style-type: none"> <li>Road - Light Duty - Unspecified Composition</li> <li>Road - Unimproved</li> <li>Trail</li> <li>Aerial Retardant Drop</li> <li>Fence</li> <li>Road Repair</li> <li>Highway</li> <li>Road - Light Duty - Dirt</li> <li>Road - Light Duty - Gravel</li> <li>Road - Light Duty - Paved</li> <li>SCE Laydown Yard</li> <li>SCE Helispot</li> <li>Powerhouses</li> <li>USDA Forest Service</li> </ul> |
|---|--|--|--|



DIV P

Branch XX

DIV U