

INCIDENT ACTION PLAN CREEK INCIDENT

CA-SNF-001391
P5NJ3F(0515)

SUNDAY



SOUTH ZONE

OPERATIONAL PERIOD

10/4/2020 0700

to

10/5/2020 0700

0700 OPS BRIEF



Briefing on CDF TAC 24

Public Information (844) 668-3473

1700 PLANS MEETING





IAP -SOUTH ZONE



MAPS SOUTH ZONE



INCIDENT OBJECTIVES (ICS 202)

1. Incident Name: CREEK	2. Operational Period:	Date From: 10/4/2020	Date To: 10/5/2020
		Time From: 0700	Time To: 0700

3. Objective(s):

Management Objectives

- Ensure that strategies and tactics provide for firefighter and public safety through the application of sound risk management principles.
- Minimize the threat to private property, communities, businesses, and critical infrastructure.
- Establish and strengthen cooperator, partner, and stakeholder relationships.
- Minimize the threat of exposure to COVID-19 within the incident and surrounding communities by adhering to the CDC COVID-19 Guidelines.
- Minimize the cost of the incident by employing tactics that have the highest probability of success while minimizing firefighter exposure.

Control Objectives

- Keep the fire north of Pine Flat Lake
- Keep the fire south of the South Fork of Merced River and the Minarets Range
- Keep the fire east of Highway 41
- Keep the fire west of the Mono and Silver Divide Range

General Situational Awareness:

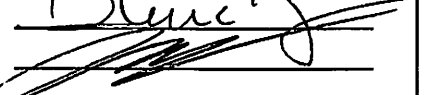
- Utilize IRPG checklists to manage risk.
- Ensure Lookouts are established, Escape Routes and Safety Zones are clearly identified.
- Ensure effective communications are occurring by giving clear instructions and asking clarifying questions.
- Continue to adhere to COVID 19 preventative measures.
- Potential for increased fire behavior when the air clears.


5. Site Safety Plan Required? Yes No

Approved Site Safety Plan(s) Located at:

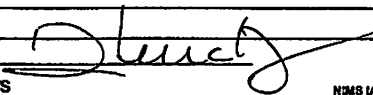
6. Incident Action Plan

<input checked="" type="checkbox"/> ICS 203	<input checked="" type="checkbox"/> ICS 215A	<input type="checkbox"/> ICS 205 A	<input type="checkbox"/>
<input checked="" type="checkbox"/> ICS 204	<input checked="" type="checkbox"/> ICS 220	<input checked="" type="checkbox"/> Training Message	<input type="checkbox"/>
<input checked="" type="checkbox"/> ICS 205	<input checked="" type="checkbox"/> Facility Maps	<input checked="" type="checkbox"/> Travel Map	<input type="checkbox"/>
<input checked="" type="checkbox"/> ICS 206	<input checked="" type="checkbox"/> Weather Forecast	<input checked="" type="checkbox"/> Demob Plan	<input type="checkbox"/> County Health Message
<input checked="" type="checkbox"/> ICS 208	<input checked="" type="checkbox"/> Fire Behavior	<input checked="" type="checkbox"/> Finance Message	<input checked="" type="checkbox"/> ICS 214

7. Prepared By: Rick Leuck **Position/Title:** PSC1 **Signature:** 

8. Approved by Incident Commander South: Rick Young **Signature:** 

ORGANIZATION ASSIGNMENT LIST (ICS 203)

1. Incident Name: CREEK		2. Operational Period: Date From: 10/4/2020 Date To: 10/5/2020	
		Time From: 0700 Time To: 0700	
3. Incident Commander(s) and Command Staff:		7. Operation Section:	
IC/UC's	R. Young, J. McDougald, K. Curtice, D. Mueller (T)	Operations	A. McBath, S. Prather (T)
Deputy	C. Joseph	Deputy Operations	
Safety Officer	B. Savage, D. Welch	Night Ops	S. Burns
Information Officer	M. Savage, S. Kliest, E. MacEwen, C. Quintanilla (T)	Planning / Ops	D. Fregulia, C. Stevens, J. Goss (T)
Liaison Officer	R. Alpert, F. Flores, D. Cooper	Zone	South
Human Resource	A. Cabida	Branch	XX E. Villa (12)
4. Agency/Organization Representatives:		Division/Group	N G. Marquez (12), H. Kennedy (T)(12)
CALFIRE AA	M. Johnson	Division/Group	P J. Hidalgo (12), E. Dehart (T)(12)
CALFire Line Officer	C. Bump	Division/Group	R K. Olsen (12)
CAL OES	D. Franklin	Division/Group	Night N/P/R J. Knox (12)
CHP	C. Kunzler	Division/Group	
Fresno County OES	K. Austin	Branch	XXV/XXIX M. Dunham
American Red Cross	K. Poltras	Division/Group	S/U I. Bianchi (9431C)
USFS	K. Sorini	Division/Group	V/W C. Honey (9411C)
CNG Army	D. Hall	Division/Group	X/Z T. Mack (TF145)
PG&E	C. Jordan	Division/Group	Suppression Repair C. Wade (12), C. Borello (12)
Southern CA	S. Brown	Division/Group	
Cal Trans	G. Pamplin	Branch	
CDCR	L. VonSavoye	Division/Group	
CCC	B. Dunkle	Division/Group	
AT&T	J. Tone	Division/Group	
		Division/Group	
		Branch	
		Division/Group	
5. Planning Section:		Division/Group	
Chief	R. Leuck, R. Ashby (T)	Division/Group	
Resource Unit	T. Costello, R. Roque, K. McDonald (T), H. Klemenson (T), M. Weisenberg (T)	Division/Group	
Situation Unit	T. Morelock, R. Wakefield, F. Baker	Branch	
GISS	D. Hutchinson, S. Powell	Division/Group	
IMET	M. Pellerito, J. Pendergast	Division/Group	
FBAN	J. Shelton	Division/Group	
SOPL	R. Sinkovitz	Division/Group	
DMOB	R. Villa (T)	Branch	
Documentation Unit	J. Ostling	Division/Group	
Training Specialist		Division/Group	
ITSS	J. Youngblood, R. Martinez, A. Rose	Division/Group	
SCKN	A. Saltzman	Air Operations Branch	Director: J. Keesee
READ	D. Quintana	Air Support Group Supervisor	
		Air Tactical Group Supervisor	
6. Logistics Section		Helibase Manager	
Chief	K. Kumpe, B. Shurr, R. Crowther (T), R. Cruz (T)	Helitorch Manager	
Supply Unit	M. Bradford		
Facilities Unit	D. Nugent (T), D. Norvel (T)	8. Finance/Administration Section:	
Ground Support Unit	Z. Wilcox (T)	Chief	T. Fork
Communications Unit	K. Earle, A. De La Torre (T)	Time Unit	J. Brown
Medical Unit	J. Carlon, N. Ong (T)	Equipment Time	M. Prochazka
INCM	R. Flaim, D. Justin-Silveria	Comp/Claims Unit	E. Downing
Food Unit	L. Maybe, C. Danhieser (T)	Cost Unit	R. Siemers
Prepared By: Name: Rick Leuck Position/Title: PSC1 Signature: 		Date/Time: 10/3/2020 2300 hours	
ICS 203		<small>NIMS IAP</small>	



Creek South Zone Fire Weather Forecast



FORECAST NO: 27

NAME OF FIRE: Creek Fire

PREDICTION FOR: 0700 Sun – 0700 Mon

UNIT: CA-SNF-001391

SHIFT DATE: 10/04-10/05

SIGNED: *Mark Pellerito*

Incident Meteorologist - Mark Pellerito

TIME/DATE FORECAST ISSUED: 1900 10/03/20

IMET PHONE: 240-205-4030; mark.pellerito@noaa.gov

WEATHER DISCUSSION:

Very poor nighttime humidity recoveries continue; starting in teens-near 20% right away, and dipping further into single digits-lower teens by midday just like yesterday – and tomorrow. The very dry air and longer nights are leading to a wide spread in dawn temperatures; while still getting quite warm during the day under continued sunshine. Smoke will remain trapped in the primary San Joaquin Canyon, but at least some mid to late afternoon thinning will occur. Above the inversion, there will still be smoke simply via increased fire activity – just not as thick as below. Winds are still simply terrain-driven - downslope/downcanyon nights-early mornings; upslope/upcanyon late mornings-afternoons with gusts well into the teens/near 20 mph at ridges and west-to-east aligned canyons such as the San Joaquin South Fork/Division N. Temperatures will glide closer to normal mid to late week; humidity will be a bit slower to respond.

WEATHER FORECAST FOR SUNDAY: Mostly sunny, very warm/dry. Typical terrain-driven winds. Unstable ridges.

TEMPERATURES: Max 2500-5000' 83-91° ...above 5000' 69-83° 24 HR Trend: Down 1-2° (still warm).

HUMIDITY: Min 2500-5000' 10-18% ...above 5000' 6-16% 24 HR Trend: Little change.

10-FOOT WIND:

RIDGETOP - East-northeast 4-7 mph to mid morning, then southwest 6-12 mph; gusts 15-20 mph.

SLOPE/VALLEY - Downslope/downcanyon 2-4 mph early, then upslope/upcanyon 5-9 mph; gusts 12 mph.

STABILITY/INVERSION: Smoke thins 1300-1600 but not fully. Inversion/trapped smoke lifts to ~5500 ft; not quite as strong as recently and so slightly more ventilation/gustiness than Friday-Saturday.

WEATHER FOR SUNDAY NIGHT: Mostly clear. Terrain-driven downslope winds. Very poor RH recovery, in mid-to-upper slopes (thermal belts/ridges) outside of deep drainages/low spots/lakes. Smoke dense in low spots.

MINIMUM TEMPERATURES:

500-5000' 62-67° ...Above 5000' 50-62° except drainage spots 39-45°. 24 HR Trend: Down 2-3°

MAXIMUM HUMIDITY:

500-5000' 20-30% ...Above 5000' 20-30%; 10-18% late (drainage spots higher). 24 HR Trend: Little change.

10-FOOT WIND:

RIDGETOP - Variable early, then east-southeast 4-7 mph with gusts to 10 mph.

SLOPE/VALLEY - Downslope/downcanyon 3-6 mph; gusts as much as 12 mph in east-to-west aligned drainages (Huntington Lake; South Fork San Joaquin).

EXTENDED FORECAST:

MONDAY... Warm & very dry, but with some high thin sun-filtering clouds drifting by. Max temps 68-89° (down 1-2°). Min RH 6-18% (little change). Winds downcanyon 2-5 mph early; then upslope to west-southwest 5-10 mph; gusts especially ridges) 14-18 mph. Inversion around 5500 feet. Somewhat unstable air for ridges/upper slopes.

CAN FOR REALTIME OBS

Key RAWS Locations

Waterfall RAWS 5600'

Little Rest RAWS 4100'

Div S

Div W

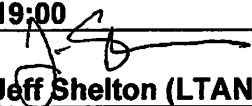
IRAWS 50 – River bottom 2195' Div A

High Sierra RAWS 7431' Div N

SCE Kaiser Ridge 8400' Div R



FIRE BEHAVIOR FORECAST

FORECAST NUMBER: 006	TYPE OF FIRE: Wildfire
FIRE NAME: Creek Fire South Zone	OPERATIONAL PERIOD: 10/04/20 0700-0700
DATE ISSUED: October 3, 2020	TIME ISSUED: 19:00
UNIT: CA-SNF-001391	SIGNED: 
	Typed/printed: Jeff Shelton (LTAN)

INPUTS

WEATHER SUMMARY: *** *Continued Very Dry...Increased Afternoon Winds* ***
Slowly weakening regional high-pressure system will inhibit vertical motion at roughly the 5500' level. Above the inversion, more unstable air will support localized column development. Terrain winds will provide the steering mechanism for any column that does develop above the inversion. Overnight RH recoveries leading into the burn period will again be very, very poor.

Max. Temperature: 83-91 degrees **Min. Humidity:** 6-11% **Winds(Day):** Terrain Driven/ SW to 12 Gusts 20
Min. Temperature: 39-50 degrees **Max. Humidity:** 18-30% **Winds(Night):** Downslope/ East to 12 Up High

OUTPUTS

FIRE BEHAVIOR

GENERAL:

- Slope reversal coming?...*Identify, and Plan For, "The Next Big Change" in the Fire's Path!*
- This fire remains fuels driven...*But Ventilation Dependent...Read Your Smoke Often!*
- PIGs- 90%-Respect all tree torching-*Especially in Drainages and on Exposed Ridgelines!*
- Fine Dead Fuel Moistures Down to 3%... *Unbroken Chain of Fuels... Litter to Timber!*
- Dry, large fuels (<8%-1000 hr.) are catching and carrying fire...*Slowly... but Relentlessly!*
- If you can see blue sky, fire behavior will soon spike...*Improved Visibility=Increased Lift!*
- Has your fireline been static for days...*Fire Weakened Trees are Becoming Weaker 24/7!*

SPECIFIC:

All Divisions: Lower Slopes-Well Established, *Moderate Intensity*, Fuels Driven, Surface Fire...
Isolated Torching, and Short Runs in Steep, Aligned Topography...

Upper Slopes- Ventilation Enhanced, *High Intensity*, Fuels Driven Surface Fire
Group Torching, Short Runs, Short Range Spotting...

Flame Lengths- Up to 2 ft. in Litter, 6 ft. in Grass, and 30 ft. in Brush...Remaining Active Overnight!

Rate of Spread- Up to 60 chains/hour in Grass, Up to 80 chains/hour in Brush... Slowing Overnight.

Spotting Distances- Up to .1 miles in Grass/Brush, Up to .3 miles in Timber (From Torching)

Probability of Ignition- 60% Shaded, 90% Unshaded; Down to around 30% overnight

AIR OPERATIONS: Sunrise: 0656 Sunset: 1839

Expect fair to poor smoke dispersion with minimal clearing from light diurnal transport winds. Mixing heights will raise to 5500' by 1400. Anticipate greatly reduced visibility in the sheltered valleys early. Above the inversion, anticipate early enhanced visibility. Without strong upper level winds, smoke above the inversion could quickly obscure visibility.

SAFETY

Identify, Respect and Continually Update Fire Behavior Trigger Points!

Fire Type...Fire Location...Fire Speed... Fire Intensity!

Fuels and Fire Behavior Advisory

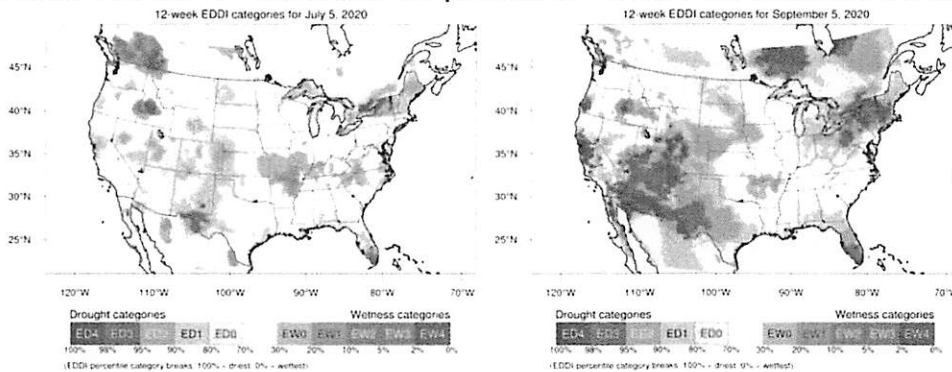
Southern California Geographic Area

September 11, 2020

Subject: Live and dead fuels are extremely dry across the mountain predictive service areas (PSAs). Extreme fire behavior and rapid rates of spread are occurring in these areas, even when winds are light. The chance for extreme fire behavior will increase over the next couple of months as winds increase and become more prevalent. Fire behavior will remain elevated across the mountains of southern and central California, until significant rainfall occurs.

Discussion: A progressive pattern brought near to slightly below normal temperatures from June through August 11th and fire activity was below normal. High pressure became strong and dominant from August 12th into September, bringing well above normal temperatures and very low humidities. Live and dead fuel moisture over the mountains are much lower than normal, due to the absence of monsoonal showers and thunderstorms, combined with very warm and dry conditions.

Difference from normal conditions: Rainfall was 50% to 70% of normal this year in the Sierras, while the rest of the mountainous areas in Southern California received slightly above normal rainfall. Due to hot and dry conditions and little to no rainfall this summer, the dead fuel moistures across all mountain areas are near or below the 3rd percentile and live fuel moistures are between 50% and 70%. ERC's are running near or above the 97th percentile. Computer models indicate high pressure will dominate through at least the end of October, so the potential for extreme fire behavior will increase.



The Evaporative Demand Drought Index (EDDI) is an experimental drought monitoring and early warning guidance tool. It examines how anomalous the atmospheric evaporative demand (E_0 ; also known as "the thirst of the atmosphere") is for a given location and across a time period of interest. The figures show the 12 week period preceding July 5 (left) and Sep 5 (right).

<https://psl.noaa.gov/eddi/>

Concerns to Firefighters and the Public:

- Firefighters need to be prepared for possible extreme fire behavior and dangerous rates of spread at any time of day, especially during foehn wind events.
- The potential for extreme fire activity will be likely to continue until enough precipitation occurs to significantly increase fuel moisture.
- Rapid rates of spread could have a significant impact on public safety and make evacuations difficult.

Mitigation Measures:

- All firefighters need to remain aware of current and expected weather and burning conditions.
- Employ LCES principles (Lookouts, Communications, Escape Routes, Safety Zones).
- Review current fire potential products from Predictive Services at: <https://gacc.nifc.gov/oscc/predictive/weather/index.htm>.
- Red Flag conditions from the National Weather Service and weather at: <https://www.wrh.noaa.gov/fire2/cafw/>.
- Monitor the Santa Ana Wildfire Threat index during the season at: <https://fsapps.nwcg.gov/psp/sawti>

Area of Concern: The mountains are the driest area in the region and are the main concern heading forward. The associated PSAs are SC01, SC02, SC03, SC09, SC10, and SC11.

SAFETY MESSAGE

Creek Incident- South Zone CA-SNF-001391

October 4-5, 2020

0700-0700

MAJOR HAZARDS:

- DRIVING- HWY 168 WILL CONTINUE TO HAVE HIGH TRAFFIC VOLUME.
- FIRE WEAKENED TREES/SNAGS; STUMP HOLES; BURNING UNDERGROUND ROOTS.
- HEAT STRESS; DEHYDRATION; AND CUMULATIVE FATIGUE.
- HAZARDOUS FOOTING ON STEEP SLOPES.
- ROLLING ROCKS AND OTHER MATERIAL ON STEEP SLOPES.

Most of the fuels on fire have been burning for a considerable amount of time. This has resulted in large numbers of dangerous hazard trees/snags and stump holes with large amounts of hot material and smoldering root systems. These all pose a risk of serious burn injuries. Thoroughly scout work areas for these hazards prior to engaging and talk about these items when briefing your crews before engagement.

DRIVING – Civilian vehicle traffic has increased dramatically as closure areas have re-opened to the residents. Many trailered boats are being towed out of the fire area. Expect civilian vehicles to stop on or along the highway to survey damage or take pictures. We all need to maintain safe speeds & always wear our seat belts. If you're driving, please leave your cell phone alone.

CUMULATIVE FATIGUE: An active fire season, long hours worked, and back-to-back assignments can lead to serious cumulative fatigue. Monitor yourself, your subordinates, and others for fatigue. Take frequent short rest breaks, eat balanced meals, and maintain 2:1 work/rest ratios.

COMMUNICATIONS TIPS

- * Put more emphasis on eye-to-eye communication. Delivering messages or information face to face is the best way to ensure a complete understanding of the material.
- * What? Speak up! Most people need to speak louder.
- * Question whether what you are saying is understandable or if it can be made clearer. Many miscommunications are a result of vagueness or ambiguity.
- * Listen to comments or questions co-workers may have. Giving correct answers to these questions often provides a greater sense of understanding and can actually increase productivity and dedication.
- * Make sure you fully understand the communications plan and the assigned frequencies. Are you using the strongest command repeater for your current location?

AVOIDING BACKING ACCIDENTS

- Avoid having to back up. Park so you can move forward when starting.
- Park in a location away from moving traffic or other parked vehicles so you avoid difficult maneuvering conditions or set yourself up for a collision.
- Before you back your vehicle, walk all the way around it to check underneath and at the sides and back for obstructions or other dangers. Ensure there is plenty of clearance around the vehicle to back safely.
- Before you move, turn your head to the left and right to look directly out the side and back windows of your vehicle. If you can't look directly out the windows, use your side and rear-view mirrors to look in all directions.
- Use a spotter whenever available. When using a spotter, make sure you can see each other at all times in the one of the side view mirrors. If you lose sight of your spotter- STOP!

Safety Officers: Brian Savage & Dave Welch

INCIDENT RISK ANALYSIS

CA-SNF-001391

(ICS 215a) Day/Night Shift

DIV/BR	HAZARDOUS ACTIONS / CONDITIONS	MITIGATIONS / WARNINGS / REMEDIES
ALL	TRAFFIC HAZARDS AND DRIVING	<ul style="list-style-type: none"> Practice "Defensive Driving" techniques. Traffic volume is high in the area. Use spotters when backing. Always use headlights. Use warning lights when working on roads or traveling in smoke. Observe posted speed limits. Use chock blocks, turn wheels into hill. Many roads are narrow and mid slope, use caution.
ALL	HAZARD / DANGER TREES	<ul style="list-style-type: none"> Follow Hazard Tree Safety Guidelines (IRPG p.22). Limit number of personnel around snags and their exposure time; fallers must be qualified for the trees being felled. Be especially alert around snags during wind events. Large green trees can also be dangerous.
ALL	FIRE BEHAVIOR	<ul style="list-style-type: none"> Conduct thorough assessments before starting work. Ensure LCES is in place. Provide additional briefing on drought related fire behavior and areas of high concentration of hazard trees. Increase the level of SA. Provide additional briefing for new resources and maintain communications.
ALL	WEATHER	<ul style="list-style-type: none"> Be aware of changing weather conditions. Watch out for increasing winds and instability. Anticipate increased fire behavior conditions. Communicate any observed changes in weather and fire behavior. "Base all actions on current and expected behavior of the fire."
ALL	FATIGUE	<ul style="list-style-type: none"> Be alert for signs of fatigue and take breaks as necessary. Maintain 2:1 work/rest ratio. Monitor ALL resources for level of fatigue. Recognize the symptoms of fatigue and take action as necessary to provide rest and recovery. Repeated assignments in the same area can lead to complacency making personnel more vulnerable to accidents. Take steps (switching of assignments, training opportunities during slow periods, etc.) to maintain situational awareness for the duration of the incident.
ALL	COMMUNICATIONS	<ul style="list-style-type: none"> Share your Situational Awareness (hazards, changes, etc.) to those who also have a need. Radio Communications may be poor in some areas: use human repeaters as needed. Ensure all personnel are familiar with the incident and IA communications plans. Make sure all resources have radios cloned appropriately. Ensure that non-agency resources understand radio use and procedures.
ALL	STEEP TERRAIN AND ROLLING DEBRIS	<ul style="list-style-type: none"> Maintain 8'-10' spacing when working & walking. Use caution and communicate when working above any personnel. Evaluate necessity to send personnel in areas with limited access.
ALL	LINE CONSTRUCTION	<ul style="list-style-type: none"> Follow the line construction protocols and safety precautions for direct and indirect line construction. Watch footing and spacing between firefighters, especially those working below. Make sure LCES is in place. Follow the "Downhill Line Construction Checklist" on IRPG page 9.
ALL	ENVIRONMENTAL HAZARDS	<ul style="list-style-type: none"> Keep alert for wildlife, deer, rattlesnakes, bees, and BEARS. Watch footing and hand placement around rocks. Use caution around gas and power lines. There are numerous power lines down within the fire area. Treat all lines as live!! Every line has the potential to be energized through back-feed by civilian generators or solar power systems in the area. Follow all CDC and Agency COVID 19 protocols.
ALL	HEAVY EQUIPMENT OPERATIONS	<ul style="list-style-type: none"> Ensure communications are established with operators. Ensure ground personnel have safety illumination, with light-sticks being the minimum. Maintain a 50'-100' exclusion area around equipment. In timber increase safety distance to 2 ½ times canopy height.
ALL	MOP UP	<ul style="list-style-type: none"> Evaluate areas for hazard trees and locate stump holes for avoidance. Monitor fatigue; shorten shifts to increase rest where appropriate. Provide motivation to workers to maintain situational awareness. Carefully evaluate proposed mop up distances and evaluate hazards. Only mop up to the degree necessary to accomplish the desired end state when safe to do so. Review and follow "Look Up, Look Down, Look Around" procedures (IRPG p.3-4).

INCIDENT NAME:

**Creek Fire
South Zone**

Operational Period: 0700-0700

October 4-5, 2020

DATE AT-8 - ME PREPARED:

October 3, 2020 1700 hours



ASSIGNMENT LIST (ICS 204 WF)

CONTROLLED UNCLASSIFIED
INFORMATION/BASIC

1. Incident Name: CREEK	2. Operational Period: Date From: 10/4/2020 Date To: 10/05/20 Time From: 0700 Time To: 0700	3. Branch Division XX N
--	--	--

4. Operations Personnel:		Page 1 of 1 November
Operations Section Chief: A. McBeth, S. Prather (T)		Night Ops: S. Burns
Branch Director: E. Villa (12)		Branch Safety: D. Welch (12), M Helm (12)
Division/Group Supervisor: G. Marquez (12), H. Kennedy (T)(12)		Air Attack:

5. Resources Assigned:	** Resources Below in Bold are 12 Hour **							
Resource Identifier	ALS	LWD	Leader	Personnel	Request #	Hours	Reporting Location	
CRW IHC MT TAYLOR		10/16	C.Brashers	20	C-400011	0700-1900	Edison Spike Camp	
CRW IHC ARROYO GRANDE		10/7	P. HERNANDEZ	20	C-400020	0700-1900	Edison Spike Camp	
CRW IHC LAGUNA		10/16	J. HUDSON	19	C-400021	0700-1900	Edison Spike Camp	
CRW IHC KINGS RIVER		10/13	G. Ford	20	C-400022	0700-1900	Edison Spike Camp	
WFM MAMMOTH		10/16	J. Grant	8	O-400084	0700-1900	China Peak Ski Area	
WFM STF 41		10/15	T. Markin	9	O-400118	0700-1900	China Peak Ski Area	
CRW COBRAS 1		10/7	F. Castellanos	21	C-400012	0700-1900	China Peak Ski Area	
ENG3 SNF 341		10/7	C. Cabanas	6	E-400010	0700-1900	China Peak Ski Area	
ENG3 SNF 42		10/7	R. Morris	5	E-400011	0700-1900	China Peak Ski Area	
ENG4 ENG255		10/11	S. Castello	4	E-400091	0700-1900	China Peak Ski Area	
ENG5 ENG63		10/3	H. Stoker	3	E-400081	0700-1900	China Peak Ski Area	
ENG6 CIF 671		10/8	J. Gutierrez	4	E-400015	0700-1900	China Peak Ski Area	
ENG6 PACIFIC E69		10/12	Z. Pindell	3	E-400083	0700-1900	China Peak Ski Area	
ENG6 AZ E461		10/13	B. Teague	4	E-400092	0700-1900	China Peak Ski Area	
WT PVT E-100057			J. Pehurl	2	E-100057	0700-1900	China Peak Ski Area	
FEMP FONDACARO		10/18	A. Fondacaro	1	O-400039	0700-1900	China Peak Ski Area	
EMPF (T) STANY		10/10	S. Stany	1	O-400042	0700-1900	China Peak Ski Area	

6. Work Assignments:
Continue primary line construction along Kaiser Road north toward Vermillion Valley Resort in preparation for firing. Execute defensive firing as needed to defend values at risk.

7. Special Instructions:
NIFC C-32 is the preferred Command Channel within this Division. Call out on TAC when traveling east of Kaiser Pass along 1-way road.
REAFs will check in during briefing breakout sessions with DIVS if working in that division for that shift
Coordinate structure wrap mission of Heitz Cabin with Auberry Heli-base.
Backhaul all trash and excess supplies & equipment
Identify sensitive archaeological and historic resource sites. Utilize MIST tactics when in Wilderness areas
Coordinate with REAFs for ground disturbing activities in pre-identified areas to protect the Yosemite Toad

8. Communications

Name	Ch	Function	Rx Freq	Rx Tone	Tx Freq	Tx Tone	Notes
NIFC C-5	1	COMMAND	169.7500	T5 - 146.2	167.1000	T5 - 146.2	MUSICK MTN. (CENTER)
VTAC12	11	TACTICAL	154.4525	T6 - 156.7	154.4525	T6 - 156.7	
A/G TAC	14	A/G TAC	166.6125N		166.6125N		
CALCORD	15	MEDICAL	156.0750N	T6 - 156.7	156.0750N	T6 - 156.7	EMERGENCY ONLY
GUARD V3	16	AIRGUARD	168.6250N		168.6250N	T1 - 110.9	EMERGENCY ONLY

9. Prepared by: Name:	K. McDonald	RESL	Signature:
ICS 204	Date/Time: 10/3/2020 2200	Personnel Count: 150	

ASSIGNMENT LIST (ICS 204 WF)

CONTROLLED UNCLASSIFIED
INFORMATION//BASIC

1. Incident Name: CREEK	2. Operational Period: Date From: 10/4/2020 Date To: 10/05/20 Time From: 0700 Time To: 0700	3. Branch Division XX P
--	--	--

4. Operations Personnel:		Page 1 of 2 Papa
Operations Section Chief: A. McBath, S. Prather (T)		Night Ops: S. Burns
Branch Director: E. Villa (12)		Branch Safety: D. Welch (12), M Helm (12)
Division/Group Supervisor: J. Hidalgo (12), E. Dehart (T)(12)		Air Attack:

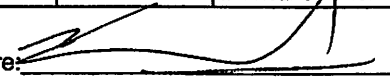
5. Resources Assigned:		** Resources Below in Bold are 12 Hour **					
Resource Identifier	ALS	LWD	Leader	Personnel	Request #	Hours	Reporting Location
CRW IHC ARROWHEAD		10/6	J. Loyd	18	C-400005	0700-1900	China Peak Ski Area
CRW IHC LOS PADRES			M. AOKI	19	C-400008	0700-1900	China Peak Ski Area
CRW IHC PALOMAR		10/16	J. Ortega	1	O-400019	0700-1900	China Peak Ski Area
CRW2IA SRV9		10/13	J. Kemick	20	C-400026	0700-1900	China Peak Ski Area
CRW SBC CRW 11		10/8	T. Gilliam	18	C-100029	0700-1900	China Peak Ski Area
STA XSF 2253A		10/5	L. Aspelin	22	E-98	0700-0700	China Peak Ski Area
ENG3 INTERIOR 37		10/14	J. Tucker	3	E-400088	0700-1900	China Peak Ski Area
ENG3 BLM E3132		10/16	MARK FOGG	4	E-400152	0700-1900	China Peak Ski Area
ENG4 PVT HR101		10/12	A. Beeley	3	E-400074	0700-1900	China Peak Ski Area
ENG6 AZ-COF LOOMIS		10/15	P. Huddleston	3	E-400089	1900-0700	China Peak Ski Area
DOZ SNF 2		9/24	J. Cornell	2	E-8	0700-1900	China Peak Ski Area
MAS PVT E-100285			G. Mcbride	1	E-100285	0700-1900	China Peak Ski Area
MAS PVT E-100495			L. Page	1	E-100495	0700-1900	China Peak Ski Area
MAS PVT E-100500			J. Burkett	1	E-100500	0700-1900	China Peak Ski Area
WT PVT E-400053		10/12	Z. Shinkle	1	E-400053	0700-1900	China Peak Ski Area
WT OES 52			J. Aguda	2	E-39	0700-0700	China Peak Ski Area
FALM O-400095		10/7	B. Toth	1	O-400095	0700-1900	China Peak Ski Area
FALM O-272			J. Christian	2	O-272	0700-1900	China Peak Ski Area

6. Work Assignments:
Maintain tactical patrol of structures on the north shore of Huntington Lake from Dowville to China Peak Landing to prevent any structure loss. Hand crews will mop up and secure direct handline from Potter Pass Trail west into the Kaiser Pass Wilderness halting fire spread. Continue to prep the Kaiser Pass Road from the intersection of the Stump Springs 05 Road south towards Kaiser Summit. Scout line from Kaiser Summit west to Potter Pass.

7. Special Instructions:
NIFC C-32 or NIFC C-5 are the preferred Command Channels to use within this Division
REAFs will check in during briefing breakout sessions with DIVS if working in that division for that shift
Backhaul all trash and excess supplies & equipment
Identify sensitive archaeological and historic resource sites. Utilize MIST tactics when in Wilderness areas
Coordinate with REAFs for ground disturbing activities in pre-identified areas to protect the Yosemite Toad

8. Communications


Name	Ch	Function	Rx Freq	Rx Tone	Tx Freq	Tx Tone	Notes
NIFC C-5	1	COMMAND	169.7500	T5 - 146.2	167.1000	T5 - 146.2	MUSICK MTN. (CENTER)
CDF T25	7	TACTICAL	159.2775	T16 -192.8	159.2775	T16 -192.8	
A/G TAC	14	A/G TAC	166.6125N		166.6125N		
CALCORD	15	MEDICAL	156.0750N	T6 - 156.7	156.0750N	T6 - 156.7	EMERGENCY ONLY
GUARD V3	16	AIRGUARD	168.6250N		168.6250N	T1 - 110.9	EMERGENCY ONLY

9. Prepared by: Name: K. McDonald RESL Signature: 

ICS 204 Date/Time: 10/3/2020 2200 Personnel Count: 122

ASSIGNMENT LIST (ICS 204 WF)

CONTROLLED UNCLASSIFIED
INFORMATION//BASIC


1. Incident Name: CREEK		2. Operational Period: Date From: 10/4/2020 Date To: 10/05/20 Time From: 0700 Time To: 0700				3. Branch XXV/XXIX		Division Suppression Repair	
4. Operations Personnel: Operations Section Chief: A. McBath, S. Prather (T) Night Ops: S. Burns Branch Director: M. Dunham Branch Safety: B. Nevin (12), M. Sass (12), M. Cobb (12) Division/Group Supervisor: C. Wade (12), C. Borello (12) Air Attack:									
5. Resources Assigned: ** Resources Below in Bold are 12 Hour **									
Resource Identifier	ALS	LWD	Leader	Personnel	Request #	Hours	Reporting Location		
CRW FUELS FKU 4349			N. Reader	1	O-100761	0700-1900	Sierra High School		
DOZ PVT E-42			C. Avila	1	E-42	0700-1900	Sierra High School		
DOZ PVT E-100035			D. Moore	1	E-100035	0700-1900	Sierra High School		
DOZ PVT E-100045			S. Chriss	2	E-100045	0700-1900	Sierra High School		
DOZ PVT E-100048			D. Grove	2	E-100048	0700-1900	Sierra High School		
DOZ PVT E-100134			V. Calanchini	2	E-100134	0700-1900	Sierra High School		
DOZ PVT E-100136			R. Martin	2	E-100136	0700-1900	Sierra High School		
DOZ PVT E-100139			D. Taylor	2	E-100139	0700-1900	Sierra High School		
MAS PVT E-100339			E. Butts	1	E-100339	0700-1900	Sierra High School		
MAS PVT E-100340			A. Fratarcangeli	1	E-100340	0700-1900	Sierra High School		
MAS PVT E-100490		10/15	P. Leslie	1	E-100490	0700-1900	Sierra High School		
MAS PVT E-100501				1	E-100501	0700-1900	Sierra High School		
EXC PVT E-100289			B. Morris	1	E-100289	0700-1900	Sierra High School		
EXC PVT E-100401			D. Dial	1	E-100401	0700-1900	Sierra High School		
EXC PVT E-100535			P. Leslie	1	E-100535	0700-1900	Sierra High School		
EXC PVT E-100536			R. McCarthy	1	E-100536	0700-1900	Sierra High School		
EXC PVT E-100459			J. Cross	1	E-100459	0700-1900	Sierra High School		
GRD PVT E-100494			S. Mcdow	1	E-100494	0700-1900	Sierra High School		
6. Work Assignments: Shaver East: Repair roads and control lines. Shaver South: Repair roads and control lines. Road Group: Repair roads in the Stump Springs (05) area. Division V/W break: Repair contingency lines.									
7. Special Instructions: Coordinate with REAFs for ground disturbing activities REAFs will check in during briefing breakout sessions with DIVS if working in that division for that shift Backhaul all trash and excess supplies & equipment									
8. Communications									
Name	Ch	Function	Rx Freq	Rx Tone	Tx Freq	Tx Tone	Notes		
NIFC C-5	1	COMMAND	169.7500	T5 - 146.2	167.1000	T5 - 146.2	MUSICK MTN. (CENTER)		
CDF T29	12	TACTICAL	151.3475	T16 -192.8	151.3475	T16 -192.8			
A/G TAC	14	A/G TAC	166.6125N		166.6125N				
CALCORD	15	MEDICAL	156.0750N	T6 - 156.7	156.0750N	T6 - 156.7	EMERGENCY ONLY		
GUARD V3	16	AIRGUARD	168.6250N		168.6250N	T1 - 110.9	EMERGENCY ONLY		
9. Prepared by: Name: K. McDonald RESL Signature: 									
ICS 204		Date/Time: 10/3/2020 2200				Personnel Count: 23			

AIR OPERATIONS SUMMARY ICS-220 NORTH/SOUTH ZONES

Incident Name / Number Creek CA-SNF-001391	Sunrise 7:01	Startup 7:31	Cutoff 18:07	Sunset 18:37	Time Prepared 1800 Shutdown 19:07	Date Prepared October 03, 2020 Operational Period - Date Sunday October 4, 2020	Prepared By J. Best
<p>General Remarks, Safety Notes, Hazards, Air Operations Special Equipment, etc. TRACK ALL DIPSITE LOCATIONS / NUMBER OF DIPS / GALLONS TAKEN. TRACK ALL DROP LOCATIONS (DIV) / NUMBER OF DROPS / GALLONS DROPPED All GPS DATA TO BE COLLECTED IN DEGREES, MINUTES, DECIMAL MINUTES, FORMAT. Retardant / Foam / Agent is Dropped Within 300' of a waterway. Notify the AOB and Provide the if Following Information: Lat / Long, Estimated Number of Gallons and a Map Detailing The Area.</p>							
<p>Heilbase Information Mariposa Latitude 37° 30.65 Longitude 120° 02.37 Auberry Latitude 37° 03.937 Longitude -119° 29.307</p>							
<p>TFR Information Request # A-213 Polygon: Altitude: 14,500 MSL Centerpoint: Lat 37°19.88 Long 119° 19.56 NOTAMS: 0/4591 Frequency 119.0750 http://tfr.faa.gov/tfr2/list.html</p>							
<p>Rescue Ship Information Name: C407 Phone 657-464-7830 Make/Model: UH-1H Location: Visalia Request Procedures: Contact Incident Communications See Medical Plan For Additional Info</p>							
<p>Operational Period - Time 0700-2100</p>							

Frequencies	RX	Tone	TX	AM / FM	Position	Name	Phone	Phone	Trainee	Phone
NIFC CMD 50	170.7625	167.9 (7)	162.9375	FM	AOBD NORTH	Jesse Best	(406) 212-4822			
A/G CMD NORTH	165.4375		165.4375	FM	AOBD SOUTH	John Keesee	(805) 551-6422			
A/G TAC NORTH	169.2875		169.2875	FM	ASGS NORTH	Don Mitchell	(435) 401-0827			
TFR	119.0750		119.0750	AM	ASGS SOUTH	Ray Ucha	(951) 903-4136			
AIR TACTICS	171.1125		171.1125	FM	MARIPOSA	Rick Jacobs	(334) 428-3042			
ROTOR NORTH	134.4250		134.4250	AM	AUBERRY HB	Brad Nelson	(559) 349-6793			
AIR BRIEF	172.1375		172.1375	FM	ATGS	Mark Bertucci	(559) 779-1108			
TOLC	119.7250		119.7250	AM	ATGS					
DECK	163.1000		163.1000	FM	HLCO/ATGS	Matt Lynde	(530) 941-4600			
CALCORD - MEDICAL	156.0750	156.7 (6)	156.0750	FM	HLCO	Casey Jones	(559) 696-3878			
AIRGUARD -	168.6250		168.6250	FM						

HELICOPTERS											
Frequencies	RX	Tone	TX	AM / FM	FAA #	Type	Make/Model	Helibase	Start	Availabi	Remarks
NIFC CMD 5	169.7500	146.2 (5)	167.1000	FM	352SA (625)	3	AS 350 B3	Auberry	0700	0800	EU/HLCO/A-28
A/G CMD SOUTH	167.0625		167.0625	FM	46HX	3	Bell 407	Mariposa	0700	0800	CWN/HLCO/A-153
A/G TAC SOUTH	166.6125		166.6125	FM	191SG	3	Bell 206	Mariposa	TBD		
TFR	119.0750		119.0750	AM	107Z (507)	2	Bell 209	Fresno	0700	0800	EU/HLCO/ATGS/A-87
AIR TACTICS	171.1125		171.1125	FM	212TH	2	Bell 212	Auberry	0700	0800	CWN/A-244
ROTOR SOUTH	132.5250		132.5250	AM	FHQB (520)	2	205 A1++	Auberry	0700	0800	EU/A/Standard/Longline/A-17
AIR BRIEF	172.1375		172.1375	FM	78EC (554)	2	205 A1++	Mariposa	0700	0800	EU/A/Standard/Longline/A-
TOLC	119.7250		119.7250	AM	63HB	2	UH-1H	Auberry	0700	0800	CWN/BUCKET/A-171
DECK	163.1000		163.1000	FM	205TK (532)	2	205A1++	Mariposa	0700	0800	EU/A/Standard/Longline
CALCORD - MEDICAL	156.0750	156.7 (6)	156.0750	FM	70K	1	UH-60A	Mariposa	0700	0800	CWN/Longline/Bucket/A-55
AIRGUARD -	168.6250		168.6250	FM	461WY	1	CH-46E	Mariposa	0700	0800	CWN/Lon
					43HX	1	K-1200	Mariposa	0700	0800	CWN/Lon
					312KA	1	K-1200	Auberry	Unavailable		
FIXED WING											
					AA15		AC 690B	Fresno	700	800	Remarks

INCIDENT RADIO COMMUNICATIONS PLAN I-205			1. INCIDENT NAME		2. DATE/TIME PREPARED		3. OPERATIONAL PERIOD DATE/TIME				
CREEK SOUTH ZONE			CREEK SOUTH ZONE		10/3/2020		10/4/20 0700 TO 10/5/2020 0700				
4. BASIC RADIO CHANNEL UTILIZATION											
Ch #	Function	Channel Name	Assignment	RX Freq	NW	RX Tone/NAC	TX Freq	NW	TX Tone/NAC	Mode Analog (A) Digital (D) Mixed (M)	Remarks
1	COMMAND	NIFC C-5	ALL DIVS	169.7500	N	T5-146.2	167.1000	N	T5-146.2	A	MUSICK MTN (CENTER)
2	COMMAND	NIFC C-46	ALL DIVS	172.0875	N	T5-146.2	162.1750	N	T5-146.2	A	FENCE MEADOW (SOUTHEAST)
3	COMMAND	NIFC C-64	ALL DIVS	172.1000	N	T5-146.2	163.3875	N	T5-146.2	A	BLACK MTN (SOUTHWEST)
4	COMMAND	NIFC C-32	ALL DIVS	171.0875	N	T5-146.2	164.0125	N	T5-146.2	A	WHITE BARK (EAST/NORTHEAST)
5	COMMAND	NIFC C-41	ALL DIVS	173.0250	N	T5-146.2	165.3875	N	T5-146.2	A	MAMMOUTH (EAST)
6	FOREST IA	SNF T5	ALL DIVS	172.2250	N		164.7875	N	T5-146.2	A	MUSICK MTN (FOREST NET IA)
7	TACTICAL	CDF T25	DIV P	159.2775	N	T16-192.8	159.2775	N	T16-192.8	A	DIV PAPA
8	TACTICAL	CDF T27	DIV R	159.3075	N	T16-192.8	159.3075	N	T16-192.8	A	DIV ROMEO
9	TACTICAL	CDF T28	DIV SIU	151.1825	N	T16-192.8	151.1825	N	T16-192.8	A	DIVS SIERRA, UNIFORM
10	TACTICAL	VTAC-11	DIV MM/W	151.1375	N	T6-156.7	151.1375	N	T6-156.7	A	DIVS X-RAY, WHISKEY
11	TACTICAL	VTAC-12	DIV NIX/Z	154.4525	N	T6-156.7	154.4525	N	T6-156.7	A	DIVS NOVEMBER, X-RAY, ZULU
12	TACTICAL	CDF T29	SUPP REPAIR	151.3475	N	T16-192.8	151.3475	N	T16-192.8	A	
13	A/G CMD	A/G CMD	ALL DIVS	167.0625	N		167.0625	N		A	
14	A/G TAC	A/G TAC	ALL DIVS	166.6125	N		166.6125	N		A	
15	MEDICAL	CALCORD	ALL DIVS	156.0750	N	T6-156.7	156.0750	N	T6-156.7	A	EMERGENCY ONLY (MEDEVAC)
16	AIRGUARD	AIRGUARD	ALL DIVS	168.6250	N		168.6250	N	T1-110.9	A	EMERGENCY ONLY
<p>5. Special Instructions: Sometimes the closest repeater is not the best. If you have poor command communications, try another command repeater (Channels 1-4). They are all linked. If you must hand program go exactly off the 205, including tones. The use of receive and transmit tones removes other, nearby radio traffic from other fires.</p>											
6. I-205 Prepared By: Communications Unit Leader					Name: Ken Earle		Signature: 				

China Peak Camp
Logistics Message
Services Schedule

For Stars Catering:	
Breakfast:	0600-0900
Dinner:	1700-2100
Sack Lunch Distribution:	0600-2200
Showers:	0500-1200 1400-2300
Fuel: Ski Resort Tanks:	0630-0830 1730-2030
Fuel Tender:	Pending
Operations	
Day: Alex McBath	530-526-1320
Night: Steve Burns	530-545-3991
Logistics:	661-747-2292
Day Sleeping: Contact Facilities	
China Peak Ground Support:	530-251-6492
Mechanic:	208-369-0802
Mechanic:	575-937-2228



SIERRA CAMP

LOGISTICS MESSAGE

SERVICES SCHEDULE

MKU:

Breakfast:	0500-1100
Dinner:	1700-2200
Sack Lunch Distribution:	0600-2000
Laundry Service:	0600-2200
Showers:	24 hr Service
Cal Mat:	24 hr Service
Fuel: Hwy 168 X Lodge	24 hr Service

Operations: Jim Mcdougald	559-281-4304
Logistics:	925-588-6883
Accommodations:	925-532-5579
Time:	925-532-5565

Sierra Ground Support:	33337 Auberry Rd.
24 Hour Mechanic	925-532-5573
Hired Equipment/HEMS	925-532-5607

WATER USAGE REPORT

DATE: _____

Division / Group: _____

AGENCY ID / VENDOR: _____

I.e. Strike Team 1110C, Acme Water Tenders

REQUEST # _____

TURN INTO FINANCE DAILY

WATER SOURCE LOCATION	Hydrant	Open source I.e. pond	Tank	Gallons Used	Property Owner / Contact Number if known **

**Please note if you made contact with property owner and their contact.
(Use reverse side if needed.)

Information: _____

The intent of this document is intended to track, record and validated the amount of water used on a incident. It's not intended to review the performance of equipment using the water on an incident.

Wildland Fire COVID-19 Screening Tool

Interim Standard Operating Procedures – 4/15/2020

NOTE: This Screening Tool represents interim guidance. Additional clarification will be coming as soon as it is defined.

DO YOU HAVE ANY OF THESE SYMPTOMS?

Today or in the past 24 hours, have you had any of the following symptoms listed below, in addition to your normal work-related issues?

- Fever, felt feverish, or had chills? Repeated shaking with chills?
- Cough? Shortness of breath or difficulty breathing?
- Muscle pain? Headache? Sore throat?
- New loss of taste and/or smell?

If in doubt about any of these symptoms, consult a Physician.

In the past 14 days, have you had contact with a person known to be infected with the coronavirus (COVID-19)?

Take temperature with touchless thermometer if available

INSTRUCTIONS FOR SCREENING

- If resource is positive for any symptoms prior to mobilization **DO NOT MOBILIZE.**
- At Entries – Consider the adequate number of personnel needed for screening. Although medical personnel are ideal, screeners do not have to be medically trained.
 - o If resource is positive for any symptoms including fever (over 100.4) at entry **DO NOT ANNOUNCE-** ask to step aside.
 - o Escort sick individual to isolation area.
 - o Isolation support personnel should begin documentation. Have sick individual contact Supervisor for further direction.
 - o Notify public health officials.
 - o Have individual transported as appropriate.
 - o Protect and secure any collected Personal Identifiable Information or Personal Health Information.

FINANCE MESSAGE

AVAILABLE OPTIONS FOR SUBMITTING TIME:

Resources can submit time electronically (email below) or hard copy. There will be drop boxes for CTRs and shift tickets in each spike camp and at ICP. Documents will be picked up daily at spike camps and ICP and transported to Finance.

If you opt to use the fillable PDF CTR or Shift Ticket you have a couple of options for submitting them to Finance:

Option 1- Resource fills out fillable PDF and submits to Supervisor for signature. Supervisor digitally signs PDF, sends signed copy back to Resource AND on to Finance.

Option 2 - Resource fills out fillable PDF, Supervisor (if comfortable) signs directly on the same device. Resource e-mails the PDF directly to Finance.

Crews: Please submit a copy of your manifest to Finance – it can be electronic or hard copy. Please note any AD crew members on the manifest with their position code and ECI number if known.

Single Resource ADs: Please submit your Single Resource Casual Hire form to Finance – it can be electronic or hard copy.

Cooperators: Please submit your agreement and resource order to Finance – either electronically or hard copy. Please don't skip any pages and assure that the signature page is shown.

ALL OVERHEAD, CREWS (INCLUDING AGENCY ENGINE, AIRCRAFT AND HAND CREWS) AND COOPERATORS FROM BOTH THE NORTH AND SOUTH ZONE WILL HAVE THEIR TIME PROCESSED BY NORTH ZONE FINANCE.

Contractors: Please submit the finance portion of your contract/agreement and resource order to Finance – either electronically or hard copy. Please don't skip any pages and assure that the signature page is shown.

ALL PRIVATE VENDORS FROM BOTH THE NORTH AND SOUTH ZONE WILL HAVE THEIR TIME PROCESSED BY SOUTH ZONE FINANCE.

Please try to submit time at least every other day. You may choose from any of the options above as long as the copy we receive in finance is legible. What works best for you, will work for us.

This fire is under Cost Apportionment, All DIVS and OPBD will need to do a daily de-brief with the Cost Apportionment Team by calling 925-588-6902.

2020.creek.finance@firenet.gov

NORTH ZONE FINANCE CONTACTS:

Finance Chief:	Biddy Simet	406-250-4188
Finance Chief (t):	Denise Middlesworth	406-249-2428
Time Unit Leader (t):	Terry Groesbeck	940-783-3746
Time recorders:	Vickie, Tammy & Debra	940-783-2965
Comp Unit Leader:	Elaine Poser	940-783-2894

PERSONNEL TIME

SOUTH ZONE FINANCE CONTACTS:

Finance Chief:	Theresa Fork	530-251-3013
Equipment Time Unit Leader:	Maggie Prochazka	925-532-5448
Equipment Time Recorders:	Jesse, Sarah, Dana & Carla	925-532-5492
Comp Unit Leader:	Elaine Downing	928-486-5295

EQUIPMENT TIME

FC-33 INITIAL INPUT FORM

1 2 3 4 5 6 7

Overhead: complete one form per person.
All Others: complete one form per vehicle.

Request Number						
E	1	2	3	4	1	

State Agency	Incident Number	Incident Name	Incident Index Code	Incident PCA Code
INCIDENT CA				
S L U 0 0 1 2 3 4	MOSQUITO		3 4 0 0 0 0 9 0 0	

Strike Team	Resource ID - Fire Assignment	Home Station / Office Location
RESOURCE S T	E-3498	PASO ROBLES

YOUR NORMAL DUTY SCHEDULE	24 Hr 8-8 7-7 Other	Portal to Portal?	YOUR AGENCY	HOME UNIT	COMMIT	YOUR CELL PHONE #
✓ One Box		✓	CAL FIRE	S L U	RELEASE	805-622-2098

PERSONNEL	Schedule	A	B	Other	Last Name	First Name	Rank or Classification	# of Regular Duty Scheduled Hours per Day									
								Mon	Tue	Wed	Thu	Fri	Sat	Sun			
EMPLOYEE 1																	
EMPLOYEE 2																	
EMPLOYEE 3																	
EMPLOYEE 4																	
EMPLOYEE 5																	
EMPLOYEE 6																	
	✓ One Box				Johnson	Robert	FC										

VEHICLE	Schedule	A	B	Other	If Other, explain	Radio ID	Kind of Vehicle	ID No/X No
VEHICLE 1								
VEHICLE 2								
	✓ One Box					E-3498	FTH	0 2 X 1 2 3

Put a Decal and It's Transport on a simple form. All others, use one form per individual vehicle.

ADDITIONAL INFO



1. 24 HOURS DAILY UPDATE

DATE: 24 Hr 12 Hr

ASSIGNMT:

RQST #:

Radio IDs:	DOZER BLADE HRS	PRTBL PUMP HRS	# OF SAWS	HRS ON EACH SAW	NOTES
ST Leader:					
Engine/Crew:					

Comments (any changes?):

CELL PHONE #:

2. 12 HOURS DAILY UPDATE

DATE: 24 Hr 12 Hr

ASSIGNMT:

RQST #:

Radio IDs:	DOZER BLADE HRS	PRTBL PUMP HRS	# OF SAWS	HRS ON EACH SAW	NOTES
ST Leader:					
Engine/Crew:					

Comments (any changes?):

CELL PHONE #:

SHIFT TICKET EXAMPLE

EMERGENCY SHIFT TICKET and EVALUATION FORM					Contractor Name		
Incident or Project Name TUBBS		Incident Number CALNU010045		Request Number E#		BIG AL EXCAVATING	
Agreement Number CZU-0000023987					Operator #1 BOB SMITH		
Operator #2 CHRIS SMITH					Operator Furnished By:		
Equipment Make CAT					<input checked="" type="checkbox"/> Contractor <input type="checkbox"/> Government		
Equipment Model / Type D6M, DZR type 2					Operating Supplies Furnished By:		
Serial Number 678432					<input checked="" type="checkbox"/> Contractor <input type="checkbox"/> Government		
Licence Number N/A					Equipment Status		
Equipment Use (Circle) Hours Days / Miles					<input checked="" type="checkbox"/> Inspected <input checked="" type="checkbox"/> Under Agreement		
Date Mo / Day Start Stop Work Assignment					Released by Government		
8/3 0700 2400 17 DIV M					Withdrawn by Contractor		
8/4 0001 0700 7 DIV M					Remarks/Comments **		
Vendor Rating					Govt. Rep. Name and Position - PRINT		
Poor* Avg. Good Exc. N/A					Mike Weber - HEQB		
Met Performance Expectations					Govt. Rep. Signature		
Equipment in Safe Working Condition					<i>Mike Weber</i>		
Operator Skill Level					Contractor Signature		
Operates Safely					<i>Bob Smith</i>		
Operator's Cooperation Level					Date Time		
Overall Performance					08/04/20 0700		
* NOTE: Any rating of POOR requires an explanation in Comment Section.					CALFIRE 297		
**Final evaluation or for more documentation, use an ICS Form 230 or equivalent.					(Rev 3-2011)		
Pink - Finance		Blue - Home Unit HE Coordinator		Yellow - Vendor		White - Govt Representative	

Vendor Rating must be done.

2 OPERATORS

EMERGENCY SHIFT TICKET and EVALUATION FORM					Contractor Name		
The responsible Government Officer will complete this form each shift					BIG AL EXCAVATING		
Incident or Project Name TUBBS		Incident Number CALNU010045		Request Number E #		BOB SMITH	
Agreement Number CZU-0000023987					Operator #2 CHRIS SMITH		
Equipment Make KENWORTH					Operator Furnished By:		
Equipment Model / Type 18 WHEEL TRANSPORT					<input checked="" type="checkbox"/> Contractor <input type="checkbox"/> Government		
Serial Number VIN #					Operating Supplies Furnished By:		
Licence Number 9999999					<input checked="" type="checkbox"/> Contractor <input type="checkbox"/> Government		
Equipment Use (Circle) Hours Days / Miles					Equipment Status		
Date Mo / Day Start Stop Work Assignment					<input checked="" type="checkbox"/> Inspected <input checked="" type="checkbox"/> Under Agreement		
8/3 0700 2400 17 DIV M					Released by Government		
8/4 0001 0700 7 DIV M					Withdrawn by Contractor		
Vendor Rating					Remarks/Comments **		
Poor* Avg. Good Exc. N/A					2 OPERATORS		
Met Performance Expectations					Govt. Rep. Name and Position - PRINT		
Equipment in Safe Working Condition					Mike Weber - HEQB		
Operator Skill Level					Govt. Rep. Signature		
Operates Safely					<i>Mike Weber</i>		
Operator's Cooperation Level					Contractor Signature		
Overall Performance					<i>Bob Smith</i>		
* NOTE: Any rating of POOR requires an explanation in Comment Section.					Date Time		
**Final evaluation or for more documentation, use an ICS Form 230 or equivalent.					08/04/15 0800		
					CALFIRE 297		
					(Rev 3-2011)		
Pink - Finance		Blue - Home Unit HE Coordinator		Yellow - Vendor		White - Govt Representative	

Vendor Rating must be done.

2 OPERATORS

Turn shift tickets into Finance.

SHIFT TICKET EXAMPLE

EMERGENCY SHIFT TICKET and EVALUATION FORM					Contractor Name	
Incident or Project Name LILAC INC		Incident Number CAMVU 024612	Request Number E #		Contractor Name H2O DUDE	
Agreement Number MEU - 0000012345					Operator #1 JOHN HANKS	
Equipment Make FREIGHTLINER		Equipment Model / Type WATER TENDER 2500+ TYPE 1			Operator #2 JOHN HANKS	
Serial Number VIN#		Licence Number 55555555			Operator Furnished By: <input checked="" type="checkbox"/> Contractor <input type="checkbox"/> Government	
Equipment Use (Circle) Hours Days / Miles					Operating Supplies Furnished By: <input checked="" type="checkbox"/> Contractor <input type="checkbox"/> Government	
Date Mo / Day	Start	Stop	Work	Assignment	Equipment Status <input checked="" type="checkbox"/> Inspected <input type="checkbox"/> Released by Government <input checked="" type="checkbox"/> Under Agreement <input type="checkbox"/> Withdrawn by Contractor	
12/8	0700	1900	12	DIV A	Remarks/Comments ** ONE OPERATOR	
12/8	1900	2400	5	OFF SHIFT		
12/9	0001	0700	7	OFF SHIFT		
Vendor Rating					Govt. Rep. Name and Position - PRINT Mike Weber - DIVS	
Met Performance Expectations					Govt. Rep. Signature <i>Mike Weber</i>	
Equipment in Safe Working Condition					Contractor Signature <i>JOHN HANKS</i>	
Operator Skill Level					Date 12/08/20	
Operates Safely					Time 1900	
Operator's Cooperation Level					Calfire 297 (Rev 3-2011)	
Overall Performance						
<p>* NOTE: Any rating of POOR requires an explanation in Comment Section. **Final evaluation or for more documentation, use an ICS Form 230 or equivalent.</p>						
Pink - Finance		Blue - Home Unit HE Coordinator		Yellow - Vendor		White - Govt Representative

Vendor Rating must be done.

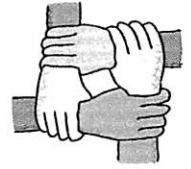
EMERGENCY SHIFT TICKET and EVALUATION FORM					Contractor Name	
Incident or Project Name LILAC INC		Incident Number CAMVU 024612	Request Number E #		Contractor Name WATER GUY	
Agreement Number BTU-0000329876					Operator #1 BOB SMITH	
Equipment Make PETERBILT		Equipment Model / Type WATER TENDER 2500 + TYPE 1			Operator #2 BILL SMITH	
Serial Number VIN #		Licence Number 99999999			Operator Furnished By: <input checked="" type="checkbox"/> Contractor <input type="checkbox"/> Government	
Equipment Use (Circle) Hours Days / Miles					Operating Supplies Furnished By: <input checked="" type="checkbox"/> Contractor <input type="checkbox"/> Government	
Date Mo / Day	Start	Stop	Work	Assignment	Equipment Status <input checked="" type="checkbox"/> Inspected <input type="checkbox"/> Released by Government <input checked="" type="checkbox"/> Under Agreement <input type="checkbox"/> Withdrawn by Contractor	
12/8	0700	2400	17	DIV M	Remarks/Comments ** 2 OPERATORS	
12/9	0001	0700	7	DIV M		
Vendor Rating					Govt. Rep. Name and Position - PRINT Mike Weber - DIVS	
Met Performance Expectations					Govt. Rep. Signature <i>Mike Weber</i>	
Equipment in Safe Working Condition					Contractor Signature <i>Bill Smith</i>	
Operator Skill Level					Date 12/09/20	
Operates Safely					Time 0700	
Operator's Cooperation Level					Calfire 297 (Rev 3-2011)	
Overall Performance						
<p>* NOTE: Any rating of POOR requires an explanation in Comment Section. **Final evaluation or for more documentation, use an ICS Form 230 or equivalent.</p>						
Pink - Finance		Blue - Home Unit HE Coordinator		Yellow - Vendor		White - Govt Representative

Vendor Rating must be done.

Turn shift tickets into Finance.



Human Resource Message



When wealth is lost,
nothing is lost; when
health is lost, something
is lost; when character
is lost, *all* is lost.

Billy Graham

WWW.VERYBESTQUOTES.COM

It was
CHARACTER
that got us out of bed,
COMMITMENT
that moved us into action, &
DISCIPLINE
that enabled us to follow through
--Zig Ziglar

Andrea Cabida- HRSP- 707-330-9939; andrea.cabida@usda.gov. I am currently located at the China Peak Camp. Feel free to call, text, or email me. I can come to you if needed.

Peer Support Team Message:

INCIDENT PEER SUPPORT:

We have a few people on the incident for any peer support related needs. The best way to get a hold of them is to call them directly.

Amber Henderson 805 794-1690

Mike DeLeo 805 573-2419

or

CAL FIRE Peer Support/Helpline

916-445-4337

Below are other Team Members not on the incident who can also be contacted directly:

Tony Howard 916-224-1543

Mike Aiello 916-584-0548

Warren Parrish 916-823-6641

Shawna Powell-530 717-0667

Nikole Schutz 916-709-0434

Jeremy Sanders- 916 281-6472

Amy Head 916-956-3277

Chris Lomanto 916-247-6974

Connie Quarisa 916-213-8697

Watch for the signs and symptoms of stress in yourself and the people around you. Try and stay positive and get much needed rest when you can. We can do this, together!

Stay Healthy, Stay Alert and Stay Strong!

CAL FIRE Employees can also contact EAP directly at: 1-866-327-4762

RESOURCE ADVISORY MESSAGE

Reporting of Cultural Sites

- Do not use the radio. Looters listen to our frequencies and will note where you find things.
- Grab a GPS point, bump it up the chain of command or directly inform a Resource Advisor on the line or in camp.

Stay Out! – Flagging Combinations for Sensitive Areas

- READs will be using flagging for areas to avoid suppression activities. There are two pieces to watch for.
 - Strip of white and a strip of blue/black.
- For more information, please consult with a READ.

Food on the Line Attract Wildlife Over Time.

- Keep food off the line as much as possible. It lures in wildlife, especially on indirect and contingency lines. Food associate's wildlife to humans and could bring about a dangerous situation to others on the line.

Riparian Areas

- Meadows are natural barriers. Tie the line to them and not through them.
- Stream and creeks should be approached with care. If needing to cross, minimize damage (i.e. on a dozer lift the blade and only track over) to prevent post-fire stability issues. Do not push or cut line through.

Water Drafting Sites

- Access the water source while trying your best to minimize damage to the soil and vegetation.
- If using a portable pump, make sure there is a spill kit and absorption pads to catch any accidental spills.
- Place portable pumps as far away as you can from the water source. Use screens on the intakes.
- Store fuel cans away from the water source and on a flat surface.

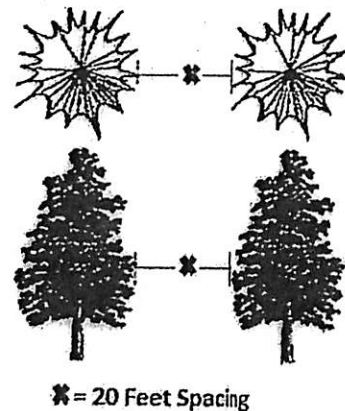
Tree Felling During Fire Line Creation

- Only cut down trees that are necessary during line construction.
 - Ask yourself, "do I really need to remove this tree? Would removal of lower hanging limbs be sufficient?"
- Avoid cutting hardwoods like black oaks when possible.

Removing Fuels in the Forest

Trees across the Sierra National Forest have a monetary value. If this can be **done safely and without compromising the line**, consider creating a shaded fuel break. A shaded fuel break means some trees will remain with a certain spacing as stated below. This more commonly applies to indirect and contingency lines.

1. Cut trees with a 20' x 20' crown spacing. This means leave one tree untouched every 20 feet with all other trees removed. The 20 feet spacing is measured from the edge of the untouched tree's branches to the next untouched tree (see image to the right). The single tree left should be undamaged and appear healthy. *Healthy = no dead tops, multi tops or obvious signs of disease*
2. Deck all trees cut over a 10" DBH. Decking is to stack the trees in a linear fashion.



Removal of Fire Burnt Trees on Federal Land along Roadways

Clearing trees along the roadways on National Forest land needs to follow the following guidelines:

Cut trees that:

- No longer have any needles left or remaining needles are black, charred and dry
- Have 60% or more of the green crown (branches with needles) that is scorched
- Have deeply charred bark that no longer has any defining characteristics such as bark shows no grooves, no fissures, and no possible puzzle like appearance and/or natural coloration.

Keep trees that are:

- Vigorous and most likely to survive. These should have green, pliable needles, and have 40% or more of a green crown.
- If a tree has 40% or more of a green crown and the bole of the tree is not burnt through, consider leaving the tree.
- Tree has defining characteristics like bark shows grooves, fissures, and may have a puzzle like appearance and/or natural coloration.
- Not a hazard to the road.

Trees that are painted with a green letter "L" are NOT to be cut. They are "Leave" trees.

OHV Routes (Brewer, Red Mtn, & Coyote Lakes Areas)

- Do not use heavy equipment on these routes. They will also likely damage the heavy equipment due to large cobbles and boulders. These are highly prized 4x4 routes that attract people from all over the county.
- Constructing line to meet up with the OHV routes is allowed.
- Using existing OHV routes as a firing line is allowed.

Keep up the good work for cultural and natural resources by doing the following:

- Picking up trash/micro-trash.
- Removing unused flagging.
- Sharing suppression information and working alongside READs.
- To the extent possible, when moving on to a new area leave the former better than you found it.

Travel Map

Creek Incident

CA-SNF-001391



East Side of Fire from Sierra Camp

Take Lodge Rd NW 1.1 miles to SR-168. Take a right on SR-168 for approximately 37 miles.

West Side of Fire from Sierra Camp

Take Lodge Rd NW 1.1 miles to SR-168. West on SR-168 for 1.6 miles to Auberry Rd. North on Auberry Rd for 2.9 miles. Right on Tollhouse Rd for 6.3 miles.

West Side of Fire from North ICP

Take Rd 200 NE for 14 miles. Left on Rd 222 for 0.7 miles.

East Side of Fire from South ICP

Take Rd 200 W for 0.4 miles to SR-41. N on SR-41 for 24 miles. Right on Big Sandy Rd for 6.5 miles. Left on Sky Ranch Rd for 2.6 miles. Right on "Save the Rock" Rd for 2.2 miles

Sierra Camp Location

33326 Lodge Rd, Tollhouse, CA 93667

North ICP Location

45077 Road 200, O Neals, CA 93645

South ICP Location

808 Fourth St., Clovis, CA

Ground Support Location

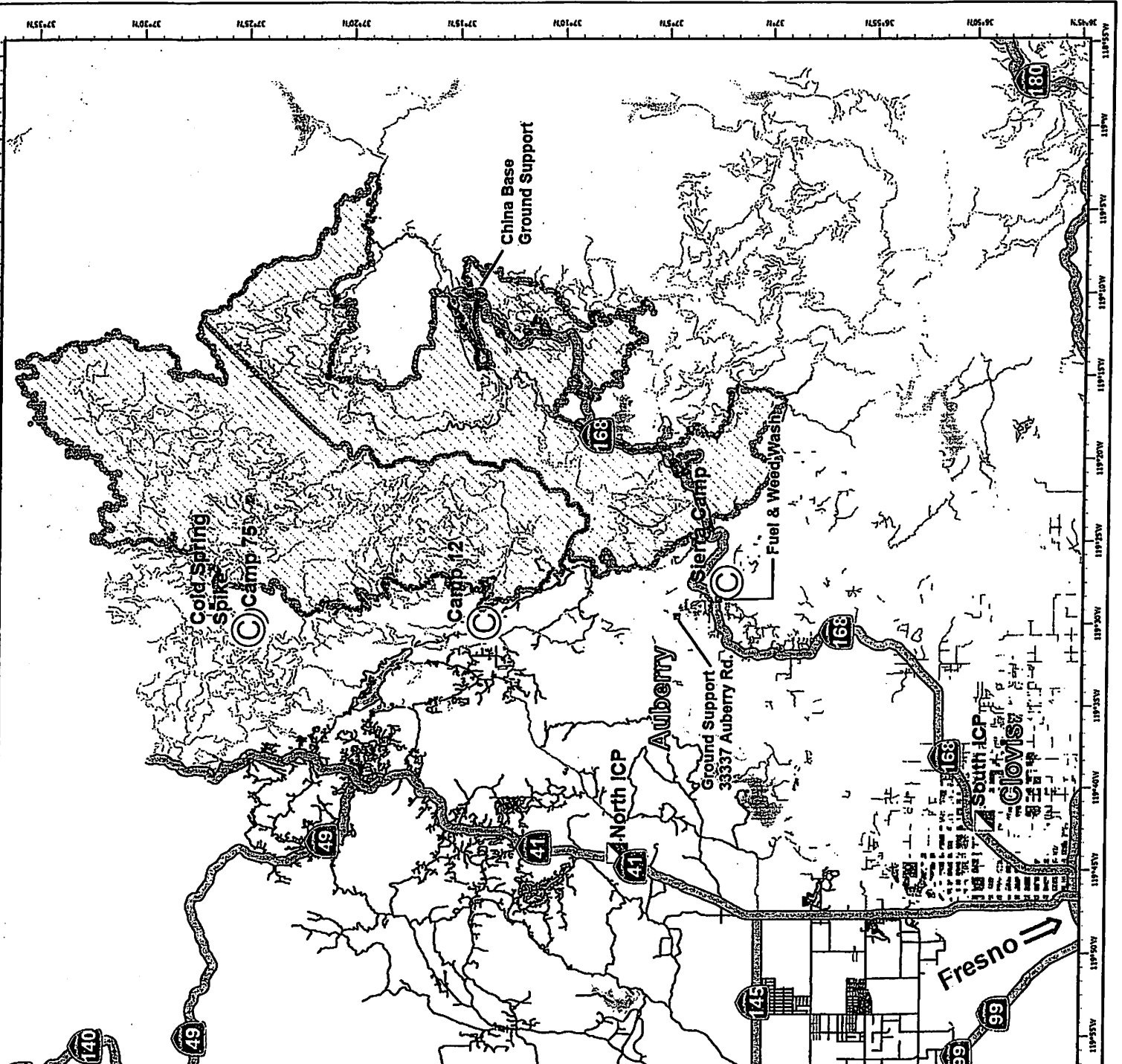
2 miles N on Auberry Rd from SR-168

Fuel and Weed Wash Location

1000 Ft. N at the intersection of SR-168 & Lodge Rd.

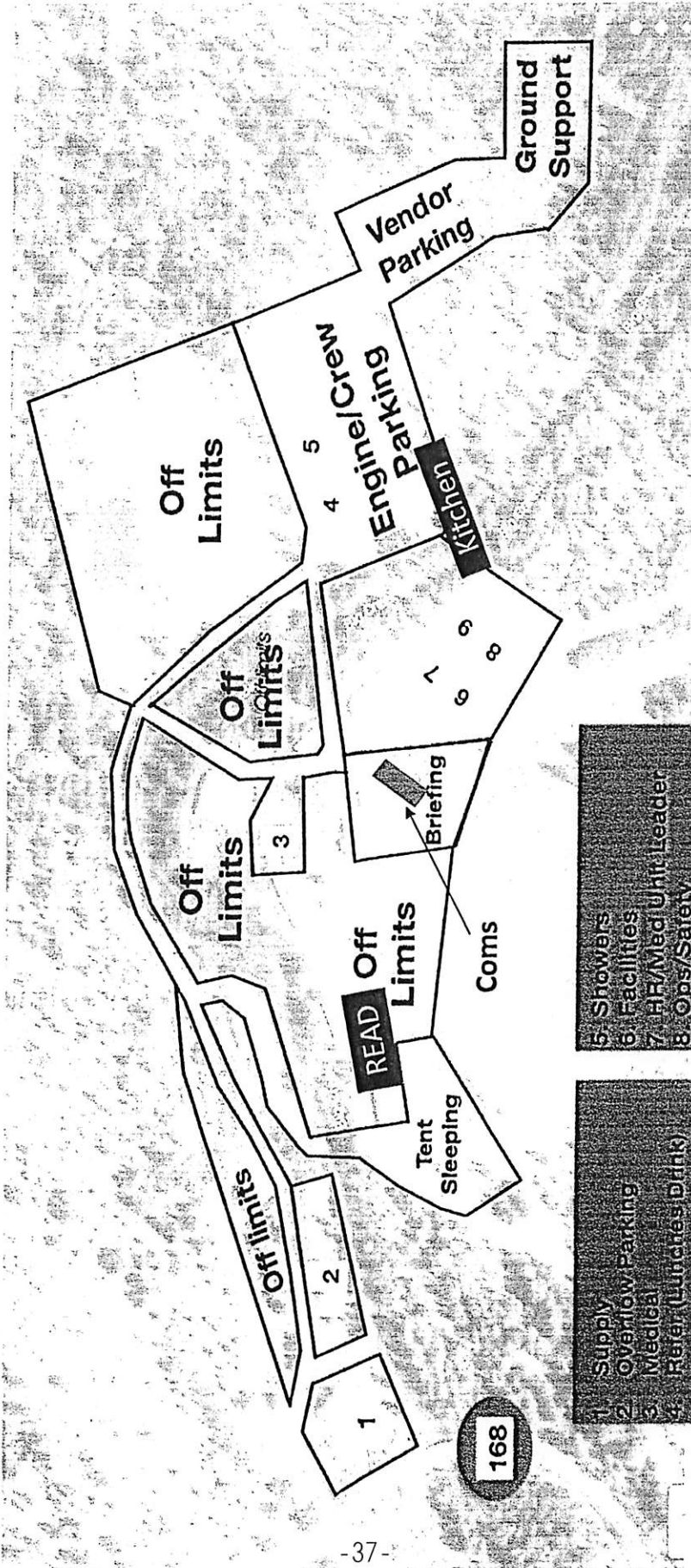
NAD 83 California Teale Albers

9/29/2020 @ 0821



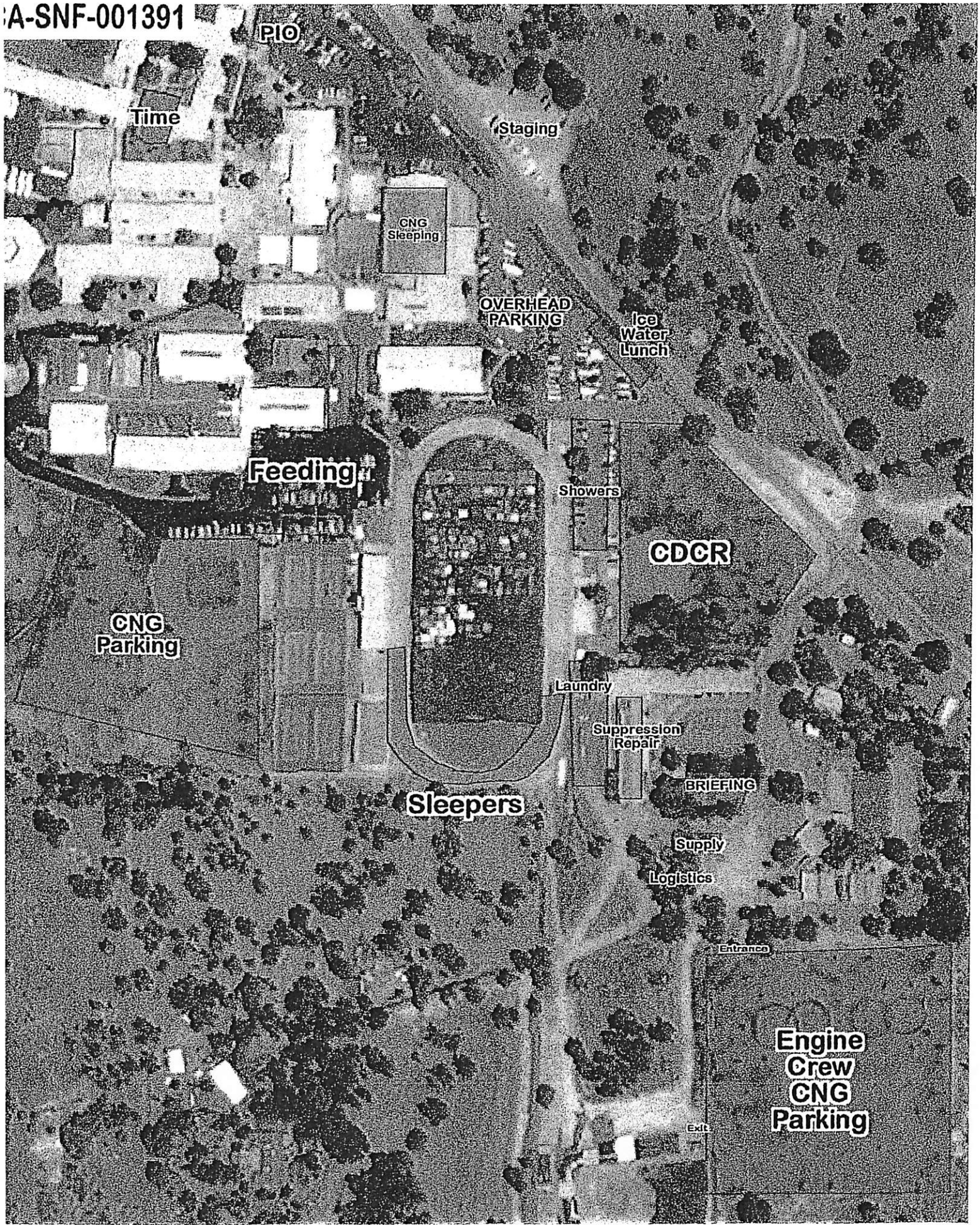


Creek Fire
China Peak Basecamp
 59265 Highway 168
 LakeShore, CA 93634



- 5. Showers
- 6. Facilities
- 7. HR/Med Unit Leader
- 8. Ops/Safety
- 9. Supply/Logistics

- 1. Supply Overflow Parking
- 2. Medical
- 3. Restroom (Lunches/Drinks)
- 4. Showers





10/04/2020

TENTATIVE RELEASE

CREEK US-CA-SNF-001391



CREWS

C-200068 0800 (CC) FRESNO 25

EQUIPMENT

E-100544 0700 (SKD2) TRACK SKISTEER - SLOWOW
E-100545 0700 (SKD2) TRACK SKIDSTEER - SLOWOW
E-200527 0830 (EXCA) BELLA MINI EX BELLA HEMS

OVERHEAD

O-100649 0000 (REAF) ROE, BENJAMIN E
O-100347 0800 (PSCT) BAILEY, JAMES
O-100348 0800 (PSCT) ORTIZ, ART
O-200254 0800 (REAF) SZYDLO, MARK DAVID
O-100520 0900 (EMTF) DESROSIERS, ALBERT
O-200249 1000 (GISS) HALE, ELIZABETH ANN
O-200436 1800 (SOPL) SINKOVITZ, RICHARD DAVID
O-200227 2000 (CAMP) BOAL, ZACHARY
O-200229 2000 (CAMP) KUNKEL, MADELINE
O-200228 2000 (CAMP) SHERIDAN, SARAH
O-200453 2200 (THSP) VAIDYANATHAN, AMBARISH

Demob Process for South Zone
Federal, State, County & Local Resources

Start at China Peak:

- 1) Get DEMOB form ICS 221, contact Frank Baker in Demob.
- 2) Check out of Supply at China Peak.
- 3) If you are a Federal Resource call North Zone Finance at 940-783-2965
- 4) Go to Ground Support (vehicle inspection) 33337 Auberry Rd.
All tactical equipment and AOV's must go through ground support. If you're in a rental you can skip this.
- 5) Go to Weed Wash. All resources coming off the line **MUST** go through Weed Wash. (Located at Hwy 168 and Lodge Road on the north/east side of the road.)
You will have to return back to ground support and weed wash if you do not get inspected and washed before coming down to ICP!!!
- 6) State, County, Local Gov't. Resources, go to CalFire and OES Finance at: Hilton Hotel Fresno Convention Center 2233 Ventura St. Fresno
- 7) Go to Veterans Memorial 808 N. 4th St. Clovis
 - a) Go to Comm Unit
 - b) Go to Demob

All resources that require an OF-288 (FTR) **MUST** clear TIMES with North Zone Finance before leaving the Creek Fire. For questions call 682-220-4332

Extensions: You must get approval from both the Division Supervisor and your agency. Bring extension form to check in at Veterans Memorial Clovis.

Questions Demob South (916) 591-9008

BLANK

LINE ORDER FORM

ORDER #	DATE & TIME ORDERED Received from the Line	WHO PLACED ORDER DIVS, OPS, etc...	DELIVER to (DIV, Helispot, DP, etc.) Division, Heli-Spot, Drop Point, etc.	MODE of DELIVERY Drive, Helo, pick-up			
Order Received in Communications By:				TIME:			
Communications Relay/Placed the Order To:				TIME:			
Order Shipped to the Line By (Name):				TIME:			
ITEM#	DESCRIPTION			AMOUNT			
1	1,000 Foot Hose Lay: Includes the following 10 lengths, 1 1/2" x 100' Hose. 10 lengths, 1" x 100' Hose. 10ea. 1 1/2" Gated Wyes. 10ea. 1 1/2" to 1" Reducers. 10ea. 1" Nozzles.						
2	2,000 Foot Hose Lay: Includes the following 20 lengths, 1 1/2" x 100' Hose. 20 lengths, 1" x 100' Hose. 20ea. 1 1/2" Gated Wyes. 20ea. 1 1/2" to 1" Reducers. 20ea. 1" Nozzles.						
3	3,000 Foot Hose Lay: Includes the following 30 lengths, 1 1/2" x 100' Hose. 30 lengths, 1" x 100' Hose. 30ea. 1 1/2" Gated Wyes. 30ea. 1 1/2" to 1" Reducers. 30ea. 1" Nozzles.						
ITEM#	REQUESTED ITEM	NFES#	AMOUNT	ITEM#	REQUESTED ITEM	NFES#	AMOUNT
4	Backpack Pump, 5 gallon	1149		26	Batteries, "AA", (package)	0030	
5	Foam, 5 gallon	1145		27	Gasoline, Unleaded (gallon)		
6	Hose, 3/4 inch, 50 ft. length	1016		28	Oil, 2 Cycle Mix (quart)	0341	
7	Hose, 1 inch, 100 ft. length	0966		29	Diesel, straight (gallon)		
8	Hose, 1 1/2 inch, 100 ft. length	0967		30	Oil, Bar & Chain (gallon)	1880	
9	Increaser, 3/4" to 1"	2235		31	Fusees (box)	0105	
10	Increaser, 1" to 1 1/2"	0416		32	Torch, Drip Torch ea.	0241	
11	Nozzle, Garden 3/4 inch	0136		33	Mix, Drip Torch 3-1, 5 gal.		
12	Nozzle, Forester, 1"	0024		34	Flagging, Ribbon, Color/Roll		
13	Nozzle, KK Type, 1"	1081		35	Washcloth, Waterless	0206	
14	Nozzle, KK Type, 1 1/2"	1082		36	Water, Cubi, 5 gallon ea.	0048	
15	Reducer, 1" to 3/4"	0733		37	Water, Bottled, (case)		
16	Reducer, 1 1/2" to 1"	0009		38	Sports Drink, Gatorade (case)		
17	Tee, Hoseline, 1"x1"x 3/4"	1809		39	Food, MRE's (12 per Box)	1842	
18	Tee, Hoseline, 1"x1"x 1"	2240		40	Pump Kit, High Pressure	0870	
19	Tee, Hoseline, 1 1/2" x 1 1/2" x 1"	0230		41	Pump, High Pressure	0148	
20	Wye, Gated, 3/4" inch	0904		42	Pump Kit, Light Weight	0670	
21	Wye, Gated, 1"	0259		43	Sprinkler Kit	1048	
22	Wye, Gated, 1 1/2"	0231		44	Pump Kit, Volume	6041	
23	Tank, Collapsible. Capacity Gallons?			45	Mop-Up Kit	0772	
24	Tank, Folding/Frame. Capacity ??						
25	Wrap, Structure (roll)	0881					

Date and Time Needed: _____ Point of Contact at Delivery Location: _____

OTHER / NOTES:

LINE ORDER FORM

ORDER #	DATE & TIME ORDERED Received from the Line	WHO PLACED ORDER DIVS, OPS, etc...	DELIVER to (DIV, Helispot, DP, etc.) Division, Heli-Spot, Drop Point, etc.	MODE of DELIVERY Drive, Helo, pick-up			
Order Received in Communications By:				TIME:			
Communications Relayed/Placed the Order To:				TIME:			
Order Shipped to the Line By (Name):				TIME:			
ITEM#	DESCRIPTION			AMOUNT			
1	1,000 Foot Hose Lay: Includes the following 10 lengths, 1 1/2" x 100' Hose. 10 lengths, 1" x 100' Hose. 10ea. 1 1/2" Gated Wyes. 10ea. 1 1/2" to 1" Reducers. 10ea. 1" Nozzles.						
2	2,000 Foot Hose Lay: Includes the following 20 lengths, 1 1/2" x 100' Hose. 20 lengths, 1" x 100' Hose. 20ea. 1 1/2" Gated Wyes. 20ea. 1 1/2" to 1" Reducers. 20ea. 1" Nozzles.						
3	3,000 Foot Hose Lay: Includes the following 30 lengths, 1 1/2" x 100' Hose. 30 lengths, 1" x 100' Hose. 30ea. 1 1/2" Gated Wyes. 30ea. 1 1/2" to 1" Reducers. 30ea. 1" Nozzles.						
ITEM#	REQUESTED ITEM	NFES#	AMOUNT	ITEM#	REQUESTED ITEM	NFES#	AMOUNT
4	Backpack Pump, 5 gallon	1149		26	Batteries, "AA", (package)	0030	
5	Foam, 5 gallon	1145		27	Gasoline, Unleaded (gallon)		
6	Hose, 3/4 inch, 50 ft. length	1016		28	Oil, 2 Cycle Mix (quart)	0341	
7	Hose, 1 inch, 100 ft. length	0966		29	Diesel, straight (gallon)		
8	Hose, 1 1/2 inch, 100 ft. length	0967		30	Oil, Bar & Chain (gallon)	1880	
9	Increaser, 3/4" to 1"	2235		31	Fusees (box)	0105	
10	Increaser, 1" to 1 1/2"	0416		32	Torch, Drip Torch ea.	0241	
11	Nozzle, Garden 3/4 inch	0136		33	Mix, Drip Torch 3-1, 5 gal.		
12	Nozzle, Forester, 1"	0024		34	Flagging, Ribbon, Color/Roll		
13	Nozzle, KK Type, 1"	1081		35	Washcloth, Waterless	0206	
14	Nozzle, KK Type, 1 1/2"	1082		36	Water, Cubi, 5 gallon ea.	0048	
15	Reducer, 1" to 3/4"	0733		37	Water, Bottled, (case)		
16	Reducer, 1 1/2" to 1"	0009		38	Sports Drink, Gatorade (case)		
17	Tee, Hoseline, 1"x1"x 3/4"	1809		39	Food, MRE's (12 per Box)	1842	
18	Tee, Hoseline, 1"x1"x 1"	2240		40	Pump Kit, High Pressure	0870	
19	Tee, Hoseline, 1 1/2" x 1 1/2" x 1"	0230		41	Pump, High Pressure	0148	
20	Wye, Gated, 3/4" inch	0904		42	Pump Kit, Light Weight	0670	
21	Wye, Gated, 1"	0259		43	Sprinkler Kit	1048	
22	Wye, Gated, 1 1/2"	0231		44	Pump Kit, Volume	6041	
23	Tank, Collapsible. Capacity Gallons?			45	Mop-Up Kit	0772	
24	Tank, Folding/Frame. Capacity ??						
25	Wrap, Structure (roll)	0881					

Date and Time Needed: _____ Point of Contact at Delivery Location: _____

OTHER / NOTES:

MEDICAL PLAN	1. INCIDENT NAME: Creek Fire	2. DATE PREPARED: October,03, 2020	3. TIME PREPARED: 1600	4. OPERATIONAL PERIOD 10/04/20-10/05/20 0700-0700
---------------------	---------------------------------	---------------------------------------	---------------------------	--

5. INCIDENT MEDICAL AID STATIONS			
MEDICAL AID STATIONS	LOCATION	ALS	
		YES	NO
Frontline Medical	China Peak Base Camp	XX	
EMPF Schwegler	Edison Camp	XX	

6. TRANSPORTATION				
A. Ambulance Services				
NAME	LOCATION	PHONE	ALS	
			YES	NO
American Ambulance Medic 121	DP-22	Command	XX	
American Ambulance Medic 122	Kaiser Peak	Command	XX	

B. AIR AMBULANCE			
NAME	LOCATION	ALS	BLS
CHP – 40 (Hoist)	TBD	XX	

7. HOSPITALS										
NAME	ADDRESS	TRAVEL TIME		PHONE	TRAUMA		HELIPAD		BURN CENTER	
		AIR	GRND		Yes	No	Yes	No	Yes	No
Clovis Community Medical Center	2755 Herndon Ave Clovis, CA 93611 36°50.32'N, 119°39.48'W	15 Min	45 Min	(559) 324-4040		XX	XX			XX
Fresno Community Regional Medical Center	2823 Fresno St Fresno, CA 93721. 36°44.58' N, 119°47.10' W	20 Min	60 Min	(559) 459-7430	L-1		XX		XX	
St. Agnes Medical Center	1303 E Herndon Ave. Fresno, Ca. 93720 36°50.15'N, 119°45.90'W	17 Min	50 Min	(559) 450-3000	L-3		XX			XX
Kaiser Fresno.	7300 N. Fresno St. Fresno, Ca 93720	N/A	50 Min	(559) 448-5568		XX		XX		XX

8. MEDICAL EMERGENCY PROCEDURES

LINE "MEDICAL-EMERGENCY" PLAN:

- Crew Supervisor to contact Division Supervisor/Operations with:
 - Patient Complaint, Condition and Location via Tactical or Command frequency. Priority 1/Red- life threatening emergency trigger Incident within Incident (IWI).
- Division Supervisor/Operation contacts South Communications:
 - Division Supervisor or POC* will run "Medical –Emergency" on the Command frequency.
 - Division Supervisor of POC* to use "Medical Incident Report" worksheet on page 118-119 of the IRPG.

POC* (Point of Contact) and/or Operations

EMERGENCY DURING OPS. BRIEF 0700-0730:

- If you have an emergency while briefing is going on over the command channel. Contact South Creek communications on SNF T5- Ch. 6

LINE "NON-EMERGENCY INCIDENT" PLAN:

- Crew Supervisor to contact Division Supervisor with:
 - Patient Complaint, Condition and Location via Tactical or Command frequency. Priority 2/Yellow and Priority 3/Green Patients do not trigger Incident within Incident (IWI).
- Division Supervisor contacts Communications:
 - Division Supervisor or POC* will run "Non-Emergency Incident" on the Command frequency.
 - Division Supervisor or POC* will use "Medical Incident Report" worksheet on page 118 -119 of the IRPG.

IN-CAMP – 24 HOUR MEDICAL

- Contact South Creek Communications
(916) 591-9026

9. PREPARED BY
MEDL – Jeff Carlon *Jeff Carlon*

10. REVIEWED BY
SOF1- Brian Savage *Brian Savage*

Medical Incident Report

FOR A **NON-EMERGENCY INCIDENT**: WORK THROUGH CHAIN OF COMMAND TO REPORT AND TRANSPORT INJURED PERSONNEL AS NECESSARY.

FOR A **MEDICAL EMERGENCY**: IDENTIFY ON SCENE INCIDENT COMMANDER BY NAME AND POSITION AND ANNOUNCE "MEDICAL EMERGENCY" TO INITIATE RESPONSE FROM COMMUNICATIONS

Use the following items to communicate situation to communications/dispatch.

1. CONTACT COMMUNICATIONS / DISPATCH (Verify correct frequency prior to starting report)
Ex: "Communications, Div. Alpha. Stand-by for Emergency Traffic."

2. INCIDENT STATUS: *Provide incident summary (including number of patients) and command structure.*
Ex: "Communications, I have a Red priority patient, unconscious, struck by a falling tree. Requesting air ambulance to Forest Road 1 at (Lat./Long.) This will be the Trout Meadow Medical Incident, IC is TFLD Jones. EMT Smith is providing medical care."

Severity of Emergency AND Transport Priority (priority 1, 2, 3)	<input type="checkbox"/> RED / PRIORITY 1 Life or limb threatening injury or illness. Evacuation need is IMMEDIATE <i>Ex: Unconscious, difficulty breathing, bleeding severely, 2° - 3° burns more than 4 palm sizes, heat stroke, disoriented.</i>	
	<input type="checkbox"/> YELLOW / PRIORITY 2 Serious Injury or illness. Evacuation may be DELAYED if necessary. <i>Ex: Significant trauma, unable to walk, 2° - 3° burns not more than 1-3 palm sizes.</i>	
	<input type="checkbox"/> GREEN / PRIORITY 3 Minor Injury or illness. Non-Emergency transport <i>Ex: Sprains, strains, minor heat-related illness.</i>	
Nature of Injury or Illness & Mechanism of Injury		<i>Brief Summary of Injury or Illness (Ex: Unconscious, Struck by Falling Tree)</i>
Transport Request		<i>Air Ambulance / Short Haul/Hoist Ground Ambulance / Other</i>
Patient Location		<i>Descriptive Location & Lat. / Long. (WGS84)</i>
Incident Name		<i>Geographic Name + "Medical" (Ex: Trout Meadow Medical)</i>
On-Scene Incident Commander		<i>Name of on-scene IC of incident within an Incident (Ex: TFLD Jones)</i>
Crew Patient Care		<i>Name of Care Provider (Ex: EMT Smith)</i>

3. INITIAL PATIENT ASSESSMENT: *Complete this section for each patient as applicable (start with the most severe patient)*

Agency Affiliation: (NO PATIENT NAMES)	Federal	Contractor	Local Government
Patient Assessment:	Age:	Weight:	Chief Complaint:
(If pertinent to Injury)	Skin Signs: (color/moisture/temp)	Level of Consciousness:	BP: HR: Respirations:
Treatment:			

4. TRANSPORT PLAN:
 Evacuation Location (*drop point, intersection, helispot, Lat. / Long, hazards*) Patient's ETA to Location:

5. ADDITIONAL RESOURCES / EQUIPMENT NEEDS:
Paramedic / EMT - Crews - Immobilization Devices - AED - Oxygen - Trauma Bag - IV/Fluid(s) - Splints - Rope rescue - Wheeled litter - HAZMAT - Extraction

6. COMMUNICATIONS: Identify State Air/Ground EMS Frequencies and Hospital Contacts as applicable

Function	Channel Name/Number	Receive (RX)	Tone/NAC *	Transmit (TX)	Tone/NAC *
COMMAND					
AIR-TO-GRND					

7. CONTINGENCY: Considerations: *If primary options fall, what actions can be implemented in conjunction with primary evacuation method? Be thinking ahead.*

8. ADDITIONAL INFORMATION: *Updates/Changes, etc.*

REMEMBER: Confirm ETA's of resources ordered. Act according to your level of training. Be Alert - Keep Calm - Think Clearly - Act Decisively
 *** Follow up with MEDL upon return to ICP ***