

# INCIDENT ACTION PLAN CREEK INCIDENT

CA-SNF-001391  
P5NJ3F(0515)

Wednesday



## ***SOUTH ZONE***



OPERATIONAL PERIOD

10/07/2020 0700  
to  
10/08/2020 0700

0700 OPS BRIEF



Briefing on CDF TAC 24  
Public Information (844) 668-3473

1700 PLANS MEETING



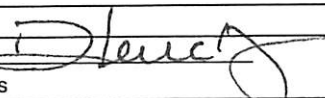
IAP -SOUTH ZONE



MAPS SOUTH ZONE



## ORGANIZATION ASSIGNMENT LIST (ICS 203)

<b>1. Incident Name:</b> CREEK		<b>2. Operational Period: Date From:</b> 10/07/2020		<b>Date To:</b> 10/8/2020	
		<b>Time From:</b> 0700		<b>Time To:</b> 0700	
<b>3. Incident Commander(s) and Command Staff:</b>			<b>7. Operation Section:</b>		
IC/UC's	R. Young, J. McDougald, K. Curtice, D. Mueller (T)	Operations	A. McBath		
Deputy	C. Joseph	Deputy Operations			
Safety Officer	B. Savage, D. Welch	Night Ops	S. Prather		
Information Officer	M. Savage, S. Kliest, E. MacEwen, C. Quintanilla (T)	Planning / Ops	D. Fregulia, C. Stevens, J. Goss (T)		
Liaison Officer	R. Alpert, F. Flores, D. Cooper	<b>Zone</b>	<b>South</b>		
Human Resource	A. Cabida	<b>Branch</b>	<b>XX</b>	<b>E. Villa (12), Prentiss (T)</b>	
<b>4. Agency/Organization Representatives:</b>		Division/Group	M	I. Naylor(12), R. Mitchinson(T)(12)	
CALFIRE AA	M. Johnson	Division/Group	N	G. Marquez (12), H. Kennedy (T)	
CALFire Line Officer	C. Bump	Division/Group	P	J. Hidalgo (12), E. Dehart (T)(12)	
CAL OES	D. Franklin	Division/Group	R	K. Olsen (12) M. Velazquez(12)	
CHP	C. Kunzler	Division/Group	Night N/P/R	J. Knox (12)	
Fresno County OES	K. Austin	Division/Group	STRUCTURE	C. Rose (12)	
American Red Cross	K. Poitras	<b>Branch</b>	<b>XXV/XXIX</b>	<b>M. Bontrager</b>	
USFS	K. Sorini	Division/Group	S/U	I. B. Lowry (9430C)	
CNG Army	D. Hall	Division/Group	V/W	I. Stevens	
PG&E	C. Jordan	Division/Group	X/Z	B. Watson (TF146)	
Southern CA	S. Brown	Division/Group	Suppression	C. Wade (12), C. Borello (12)	
Cal Trans	G. Pamplin	<b>Branch</b>			
CDCR	L. VonSavoye	Division/Group			
CCC	M. Diaz	Division/Group			
Tribal Liaison	D. Charley	Division/Group			
		Division/Group			
		<b>Branch</b>			
		Division/Group			
<b>5. Planning Section:</b>		Division/Group			
Chief	R. Leuck, J. Schillinger, R. Ashby (T)	Division/Group			
Resource Unit	T. Costello, R. Roque, H. Klemenson (T), M. Weisenberg (T)	Division/Group			
Situation Unit	T. Morelock, R. Wakefield, F. Baker	<b>Branch</b>			
GISS	D. Hutchinson, S. Powell	Division/Group			
IMET	J. Pendergast	Division/Group			
FBAN	J. Shelton	Division/Group			
SOPL		Division/Group			
DMOB	M. Kadota, R. Villa (T)	<b>Branch</b>			
Documentation Unit	J. Ostling	Division/Group			
Training Specialist	B. Rivelle (V)	Division/Group			
ITSS	J. Youngblood, R. Martinez, A. Rose	Division/Group			
SCKN	A. Saltzman	<b>Air Operations Branch</b>		<b>Director:</b>	<b>J. Keesee</b>
READ	D. Quintana	Air Support Group Supervisor		R. Ucha	
		Air Tactical Group Supervisor			
<b>6. Logistics Section</b>		Helibase Manager			
Chief	K. Kumpe, B. Shurr, R. Crowther (T), R. Cruz (T)	Helitorch Manager			
Supply Unit	M. Bradford	<b>8. Finance/Administration Section:</b>			
Facilities Unit	D. Nugent (T), D. Norvel (T)	Chief	T. Fork		
Ground Support Unit	Z. Wilcox (T)	Time Unit	J. Brown		
Communications Unit	K. Earle, A. De La Torre (T)	Equipment Time	M. Prochazka		
Medical Unit	J. Carlon, N. Ong (T)	Comp/Claims Unit	E. Downing		
INCM	R. Flaim, D. Justin-Silveria	Cost Unit	R. Siemers		
Food Unit	L. Maybe, C. Danhieser (T)				
<b>Prepared By: Name:</b>	Rick Leuck	<b>Position/Title:</b>	PSC1	<b>Signature:</b>	
<b>ICS 203</b>		<b>Date/Time:</b>	10/6/2020 2300 hours		

# INCIDENT OBJECTIVES (ICS 202)

<b>1. Incident Name:</b> CREEK	<b>2. Operational Period:</b> Date From: 10/07/2020 Date To: 10/8/2020 Time From: 0700 Time To: 0700
-----------------------------------	--

**3. Objective(s):**

**Management Objectives**

- Ensure that strategies and tactics provide for firefighter and public safety through the application of sound risk management principles.
- Minimize the threat to private property, communities, businesses, and critical infrastructure.
- Establish and strengthen cooperator, partner, and stakeholder relationships.
- Minimize the threat of exposure to COVID-19 within the incident and surrounding communities by adhering to the CDC COVID-19 Guidelines.
- Minimize the cost of the incident by employing tactics that have the highest probability of success while minimizing firefighter exposure.

**Control Objectives**

- Keep the fire north of Pine Flat Lake
- Keep the fire south of the South Fork of Merced River and the Minarets Range
- Keep the fire east of Highway 41
- Keep the fire west of the Mono and Silver Divide Range

**General Situational Awareness:**

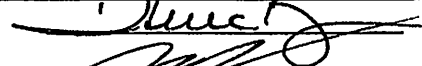
- Utilize IRPG checklists to manage risk.
- Ensure Lookouts are established, Escape Routes and Safety Zones are clearly identified.
- Ensure effective communications are occurring by giving clear instructions and asking clarifying questions.
- Continue to adhere to COVID 19 preventative measures.
- Potential for increased fire behavior when the air clears.

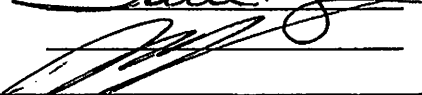
**5. Site Safety Plan Required?** Yes  No

**Approved Site Safety Plan(s) Located at:**

**6. Incident Action Plan**

<input checked="" type="checkbox"/> ICS 203	<input checked="" type="checkbox"/> ICS 215A	<input type="checkbox"/> ICS 205 A	<input type="checkbox"/>
<input checked="" type="checkbox"/> ICS 204	<input checked="" type="checkbox"/> ICS 220	<input checked="" type="checkbox"/> Training Message	<input type="checkbox"/>
<input checked="" type="checkbox"/> ICS 205	<input checked="" type="checkbox"/> Facility Maps	<input checked="" type="checkbox"/> Travel Map	<input type="checkbox"/>
<input checked="" type="checkbox"/> ICS 206	<input checked="" type="checkbox"/> Weather Forecast	<input checked="" type="checkbox"/> Demob Plan	<input type="checkbox"/> County Health Message
<input checked="" type="checkbox"/> ICS 208	<input checked="" type="checkbox"/> Fire Behavior	<input checked="" type="checkbox"/> Finance Message	<input checked="" type="checkbox"/> ICS 214

**7. Prepared By:** Rick Leuck      Position/Title: PSC1      Signature: 

**8. Approved by Incident Commander South:** Rick Young      Signature: 



### Creek South Zone Fire Weather Forecast



**FORECAST NO:** 30

**NAME OF FIRE:** Creek Fire

**PREDICTION FOR:** 0700 Wed – 0700 Thu

**UNIT:** CA-SNF-001391

**SHIFT DATE:** 10/07 - 10/08

**SIGNED:** *John Pendergrast*

**Incident Meteorologist** - John Pendergrast

**TIME/DATE FORECAST ISSUED:** 1900 10/06/20

**IMET PHONE:** 240-499-6649

**WEATHER DISCUSSION:** . High pressure, which has been overhead for awhile will weaken through mid-week. Higher level clouds will be present today. Milder temperatures for this time of year will develop into late week. Expect a little higher humidity both day and night; however, limited night time recovery will occur along mid to upper slopes. Winds remain primarily terrain-driven, with smoke transport likewise following diurnal winds upslope to up canyon during the afternoon and downslope/down drainage flow for overnights-early mornings. Though smoke will tend to remain under an inversion around 5500 feet. A chance of rain will develop Saturday.

**WEATHER FORECAST FOR WEDNESDAY:** Mixed haze and high clouds. Temperatures down slightly.

**TEMPERATURES:** Max 2500-5000' 79-84° ...above 5000' 68-76° **24 HR Trend:** Down 1-3° .

**HUMIDITY:** Min 2500-5000' 10-18% ...above 5000' 12-16% **24 HR Trend:** 1-2% higher.

**20-FOOT WIND:** .East-northeast 4-6 mph to mid morning, then southwest 6-11 mph; gusts 13-16 mph.

**SLOPE/VALLEY** - Downslope/downcanyon 2-4 mph early, then upslope/upcanyon 4-7 mph; gusts 12 mph.

**STABILITY/INVERSION:** Smoke thins 1300-1600 but not fully. Inversion/trapped smoke lifts to ~7000 ft.

**WEATHER FOR WEDNESDAY NIGHT:** Light winds in general with developing downslope winds. Limited RH recovery mid-to-upper slopes (thermal belts/ridges). Smoke dense/higher humidity in low cold spots.

**MINIMUM TEMPERATURES:**  
2500-5000' 59-65° ...Above 5000' 50-57° except drainage spots 37-46°. **24 HR Trend:** Up 1-3°

**MAXIMUM HUMIDITY:**  
2500-5000' 40-50% ...Above 5000' 20-30%; 15-22% late (drainage spots higher). **24 HR Trend:** Up 1-3%.

**20-FOOT WIND:** **RIDGETOP** - Variable early, then east-southeast 3-6 mph with gusts to 8 mph.

**SLOPE/VALLEY** - Downslope/downcanyon 2-5 mph; gusts as much as 10 mph in east-to-west aligned drainages (Huntington Lake; South Fork San Joaquin).

**EXTENDED FORECAST:**


**THURSDAY...** Milder with some clouds and morning haze. Max temps 62-74° (lower). Min RH 19-27% (Up 5 to 10%). Winds down canyon 2-5 mph early; then upslope to southwest 7-12 mph; gusts (especially ridges) 16 mph. Inversion around 5500 feet.

**SCAN FOR REALTIME OBS**

<b>Key RAWS Locations</b>		IRAWS 50 – River bottom 2195' Div A
Shaver RAWS 5600'	Div S	High Sierra RAWS 7431' Div N
Mt Rest RAWS 4100'	Div W	SCE Kaiser Ridge 8250' Div R



# FIRE BEHAVIOR FORECAST

FORECAST NUMBER: 008	TYPE OF FIRE: Wildfire
FIRE NAME: Creek Fire South Zone	OPERATIONAL PERIOD: 10/07/20 0700-0700
DATE ISSUED: October 6, 2020	TIME ISSUED: 19:00
UNIT: CA-SNF-001391	SIGNED: 
	Typed/printed: Jeff Shelton (LTAN)

## INPUTS

**WEATHER SUMMARY:** \*\*\* Cooler...Fair RH Recovery...FINALLY \*\*\*  
Weak regional low-pressure system from the southwest will slowly transition into the fire area bringing high clouds and slightly better RH recovery. Weak terrain winds will again provide the steering mechanism for any column that does develop above the still present inversion (5500'). Overnight RH recoveries leading into the burn period will be fair, but trending to good over the next few days.

**Max. Temperature:** 76-84 degrees **Min. Humidity:** 10-12% **Winds(Day):** Terrain Driven/ SW to 11 Gusts 16  
**Min. Temperature:** 37-59 degrees **Max. Humidity:** 20-30% **Winds(Night):** Downslope/ East to 8 Up High

## OUTPUTS

### FIRE BEHAVIOR

#### GENERAL:

- Slope mimics wind...**Once Fire Transitions Uphill...Even Slightly... Expect Big Changes!**
- This fire remains fuels driven...**But Ventilation Dependent...Read Your Smoke Often!**
- Anticipate tree torching-**Increased Surface Activity Will Precede Fire Laddering Up!**
- Expect all fuels types and sizes to carry fire...**Unbroken Chain of Fuels... Litter to Timber!**
- PIG is up to 90%...**Primary Spotting Source...Highly Lofted Embers...Torching Trees!**
- Stagnant smoke + high clouds + higher RH...**Burn Periods are Slowly Shortening!**
- Firing opportunities are now changing...**Plan on Shorter Burn Windows...And More Fuel!**

#### SPECIFIC:

**All Divisions:** Lower Slopes-Well Established, *Moderate Intensity*, Fuels Driven, Surface Fire...  
Isolated Torching, and Short Runs in Steep, Aligned Topography...  
**Upper Slopes-** Ventilation Enhanced, *Mod.-High* Intensity, Fuels Driven Surface Fire  
Group Torching, Short Runs, Short Range Spotting...

**Flame Lengths-** Up to 2 ft. in Litter, 6 ft. in Grass, and 30 ft. in Brush...Slowing Overnight.

**Rate of Spread-** Up to 30 chains/hour in Grass, Up to 40 chains/hour in Brush... Slowing Overnight.

**Spotting Distances-** Up to .1 miles in Grass/Brush, Up to .3 miles in Timber (From Torching)

**Probability of Ignition-** 60% Shaded, 90% Unshaded; Down to around 30% overnight

**AIR OPERATIONS:** Sunrise: 0659 Sunset: 1835

Expect fair to poor smoke dispersion with minimal clearing from light diurnal transport winds and mid-level cloud cover. Mixing heights will raise to 5500' by 1400. Anticipate greatly reduced visibility in the sheltered valleys early. Above the inversion, anticipate early enhanced visibility. Without strong upper level winds, smoke above the inversion will quickly obscure visibility as daytime heating peaks.

## SAFETY

***Do Not Let Limited Visibility Give You a False Sense of Security!  
Hope is Not a Tactic!  
Know Where the Fire Is....AND...Where It's Going!***

## Fuels and Fire Behavior Advisory

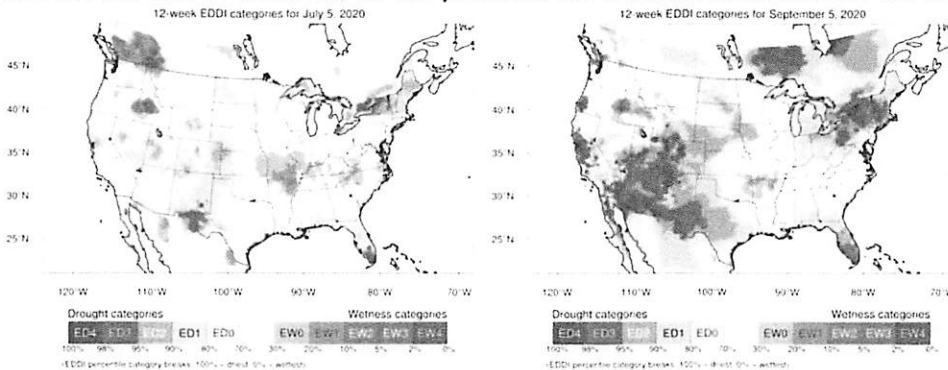
### Southern California Geographic Area

September 11, 2020

**Subject:** Live and dead fuels are extremely dry across the mountain predictive service areas (PSAs). Extreme fire behavior and rapid rates of spread are occurring in these areas, even when winds are light. The chance for extreme fire behavior will increase over the next couple of months as winds increase and become more prevalent. Fire behavior will remain elevated across the mountains of southern and central California, until significant rainfall occurs.

**Discussion:** A progressive pattern brought near to slightly below normal temperatures from June through August 11<sup>th</sup> and fire activity was below normal. High pressure became strong and dominant from August 12<sup>th</sup> into September, bringing well above normal temperatures and very low humidities. Live and dead fuel moisture over the mountains are much lower than normal, due to the absence of monsoonal showers and thunderstorms, combined with very warm and dry conditions.

**Difference from normal conditions:** Rainfall was 50% to 70% of normal this year in the Sierras, while the rest of the mountainous areas in Southern California received slightly above normal rainfall. Due to hot and dry conditions and little to no rainfall this summer, the dead fuel moistures across all mountain areas are near or below the 3<sup>rd</sup> percentile and live fuel moistures are between 50% and 70%. ERC's are running near or above the 97<sup>th</sup> percentile. Computer models indicate high pressure will dominate through at least the end of October, so the potential for extreme fire behavior will increase.



The Evaporative Demand Drought Index (EDDI) is an experimental drought monitoring and early warning guidance tool. It examines how anomalous the atmospheric evaporative demand ( $E_0$ ; also known as "the thirst of the atmosphere") is for a given location and across a time period of interest. The figures show the 12 week period preceding July 5 (left) and Sep 5 (right).

<https://psl.noaa.gov/eddi/>

#### Concerns to Firefighters and the Public:

- Firefighters need to be prepared for possible extreme fire behavior and dangerous rates of spread at any time of day, especially during foehn wind events.
- The potential for extreme fire activity will be likely to continue until enough precipitation occurs to significantly increase fuel moisture.
- Rapid rates of spread could have a significant impact on public safety and make evacuations difficult.

#### Mitigation Measures:

- All firefighters need to remain aware of current and expected weather and burning conditions.
- Employ LCES principles (Lookouts, Communications, Escape Routes, Safety Zones).
- Review current fire potential products from Predictive Services at: <https://gacc.nifc.gov/oscc/predictive/weather/index.htm>.
- Red Flag conditions from the National Weather Service and weather at: <https://www.wrh.noaa.gov/fire2/cafw/>.
- Monitor the Santa Ana Wildfire Threat index during the season at: <https://fsapps.nwcg.gov/psp/sawti>

**Area of Concern:** The mountains are the driest area in the region and are the main concern heading forward. The associated PSAs are SC01, SC02, SC03, SC09, SC10, and SC11.

## SAFETY MESSAGE

### CREEK INCIDENT- SOUTH ZONE CA-SNF-001391

October 7-8, 2020 0700-0700

- Maintain LCES and continually re-evaluate. Assure that all personnel have good communications. If you aren't in position to see the fire, who is your lookout???
- Ensure your LCES is adequate for worst- case fire behavior.
- Maintain accountability of all personnel on the fire.
- Critical fire weather is easing a bit, but the fire can still push hard it some areas.

**DRIVING ISSUES:** HWY 168 still has high traffic volume and many risks. Lots of public and contract workers vehicles. Drive defensively, keep your speeds down. Don't text and drive. WEAR YOUR SEATBELT!

**HAZARD TREES:** Snags and green trees are issues, in the green and in the black. Perform hazard tree assessments and risk analysis at your location. Are you parking your vehicle in a safe spot? Wear your hard hat at all times when outside of vehicles & follow Hazard Tree Safety Guidelines.

**POWER LINES:** Always consider downed power lines energized. Even if Edison or PG&E have shut down the supply circuits in a particular area, power lines always have the potential to be back-fed and live through emergency generators or solar panels.

**BEARS and COYOTES:** Bears have been active in some areas that we're working. Coyotes in packs have been spotted in Branch 20. It's really important to strictly manage all the food and trash at the camps and spikes. If any bears or coyotes are successful in feeding from any of our camps or spikes, they will keep coming back for more.

### Look Up, Look Down, Look Around

**\*Look Up:** Check the sky for any weather changes such as building or approaching thunderstorms, wind shifts or increasing in speed. Watch for air operations and water drops. Look for snags.

**\*Look Down:** Watch your footing. Keep an eye out for rocks, snakes, bees nests and observe fine fuels on the ground.

**\* Look Around** Check fuel loading in the area, general terrain, current fire behavior and ladder fuels. Keep an eye on fellow firefighters for signs of heat stress and smoke inhalation.

Safety Officers – Brian Savage- SOF1, Dave Welch- SOF1



**INCIDENT RISK ANALYSIS**

**CA-SNF-001391**

**(ICS 215a) Day/Night Shift**

DIV/BR	HAZARDOUS ACTIONS / CONDITIONS	MITIGATIONS / WARNINGS / REMEDIES
ALL	TRAFFIC HAZARDS AND DRIVING	<ul style="list-style-type: none"> <li>Practice "Defensive Driving" techniques. Traffic volume is high in the area.</li> <li>Use spotters when backing.</li> <li>Always use headlights.</li> <li>Use warning lights when working on roads or traveling in smoke.</li> <li>Observe posted speed limits.</li> <li>Use chock blocks, turn wheels into hill.</li> <li>Many roads are narrow and mid slope, use caution.</li> </ul>
ALL	HAZARD / DANGER TREES	<ul style="list-style-type: none"> <li>Follow Hazard Tree Safety Guidelines (IRPG p.22).</li> <li>Limit number of personnel around snags and their exposure time; fallers must be qualified for the trees being felled.</li> <li>Be especially alert around snags during wind events. Large green trees can also be dangerous.</li> </ul>
ALL	FIRE BEHAVIOR	<ul style="list-style-type: none"> <li>Conduct thorough assessments before starting work.</li> <li>Ensure LCES is in place.</li> <li>Provide additional briefing on drought related fire behavior and areas of high concentration of hazard trees.</li> <li>Increase the level of SA.</li> <li>Provide additional briefing for new resources and maintain communications.</li> </ul>
ALL	WEATHER	<ul style="list-style-type: none"> <li>Be aware of changing weather conditions.</li> <li>Watch out for increasing winds and instability.</li> <li>Anticipate increased fire behavior conditions.</li> <li>Communicate any observed changes in weather and fire behavior.</li> <li>"Base all actions on current and expected behavior of the fire."</li> </ul>
ALL	FATIGUE	<ul style="list-style-type: none"> <li>Be alert for signs of fatigue and take breaks as necessary.</li> <li>Maintain 2:1 work/rest ratio.</li> <li>Monitor ALL resources for level of fatigue.</li> <li>Recognize the symptoms of fatigue and take action as necessary to provide rest and recovery.</li> <li>Repeated assignments in the same area can lead to complacency making personnel more vulnerable to accidents.</li> <li>Take steps (switching of assignments, training opportunities during slow periods, etc.) to maintain situational awareness for the duration of the incident.</li> </ul>
ALL	COMMUNICATIONS	<ul style="list-style-type: none"> <li>Share your Situational Awareness (hazards, changes, etc.) to those who also have a need.</li> <li>Radio Communications may be poor in some areas: use human repeaters as needed.</li> <li>Ensure all personnel are familiar with the incident and IA communications plans.</li> <li>Make sure all resources have radios cloned appropriately.</li> <li>Ensure that non-agency resources understand radio use and procedures.</li> </ul>
ALL	STEEP TERRAIN AND ROLLING DEBRIS	<ul style="list-style-type: none"> <li>Maintain 8'-10' spacing when working &amp; walking.</li> <li>Use caution and communicate when working above any personnel.</li> <li>Evaluate necessity to send personnel in areas with limited access.</li> </ul>
ALL	LINE CONSTRUCTION	<ul style="list-style-type: none"> <li>Follow the line construction protocols and safety precautions for direct and indirect line construction.</li> <li>Watch footing and spacing between firefighters, especially those working below.</li> <li>Make sure LCES is in place.</li> <li>Follow the "Downhill Line Construction Checklist" on IRPG page 9.</li> </ul>
ALL	ENVIRONMENTAL HAZARDS	<ul style="list-style-type: none"> <li>Keep alert for wildlife, deer, rattlesnakes, bees, coyotes and BEARS. Watch footing and hand placement around rocks. Use caution around gas and power lines.</li> <li>There are numerous power lines down within the fire area. Treat all lines as live!! Every line has the potential to be energized through back-feed by civilian generators or solar power systems in the area.</li> <li>Follow all CDC and Agency COVID 19 protocols.</li> </ul>
ALL	HEAVY EQUIPMENT OPERATIONS	<ul style="list-style-type: none"> <li>Ensure communications are established with operators.</li> <li>Ensure ground personnel have safety illumination, with light-sticks being the minimum.</li> <li>Maintain a 50'-100' exclusion area around equipment.</li> <li>In timber increase safety distance to 2 ½ times canopy height.</li> </ul>
ALL	MOP UP	<ul style="list-style-type: none"> <li>Evaluate areas for hazard trees and locate stump holes for avoidance.</li> <li>Monitor fatigue; shorten shifts to increase rest where appropriate.</li> <li>Provide motivation to workers to maintain situational awareness.</li> <li>Carefully evaluate proposed mop up distances and evaluate hazards. Only mop up to the degree necessary to accomplish the desired end state when safe to do so.</li> <li>Review and follow "Look Up, Look Down, Look Around" procedures (IRPG p.3-4).</li> </ul>

INCIDENT NAME:

**Creek Fire  
South Zone**

Operational Period: 0700-0700

**October 7-8, 2020**

-8-

DATE AND TIME PREPARED:

**October 6, 2020 1700 hours**





# ASSIGNMENT LIST (ICS 204 WF)

CONTROLLED UNCLASSIFIED  
INFORMATION//BASIC

<b>1. Incident Name:</b> <p style="text-align: center; font-size: 1.2em;">CREEK</p>		<b>2. Operational Period:</b> Date From: 10/07/2020    Date To: 10/08/20 Time From: 0700    Time To: 0700				<b>3. Branch</b> <p style="text-align: center; font-size: 1.5em;">XX</p>		<b>Division</b> <p style="text-align: center; font-size: 1.5em;">N</p>		
<b>4. Operations Personnel:</b>						Page 1 of 2		November		
Operations Section Chief: <b>A. McBath</b>				Night Ops: <b>S. Prather</b>						
Branch Director: <b>E. Villa (12), Prentiss (T)</b>				Branch Safety: <b>D. Welch (12), C Rossman (T)(12)</b>						
Division/Group Supervisor: <b>G. Marquez (12), H. Kennedy (T)</b>				Air Attack:						
<b>5. Resources Assigned:</b>		<b>** Resources Below in Bold are 12 Hour **</b>								
Resource Identifier	ALS	LWD	Leader	Personnel	Request #	Hours	Reporting Location			
CRW IHC LOS PADRES		10/16	<b>M. Aoki</b>	19	<b>C-400008</b>	<b>0700-1900</b>	<b>Vermillion Spike</b>			
CRW IHC MT TAYLOR		10/16	<b>C. Brashers</b>	20	<b>C-400011</b>	<b>0700-1900</b>	<b>Vermillion Spike</b>			
CRW IHC KINGS RIVER		10/13	<b>G. Ford</b>	20	<b>C-400022</b>	<b>0700-1900</b>	<b>Vermillion Spike</b>			
WFM MAMMOTH		10/16	<b>J. Grant</b>	8	<b>O-400084</b>	<b>0700-1900</b>	<b>China Peak Ski Area</b>			
WFM STF 41		10/15	<b>T. Markin</b>	9	<b>O-400118</b>	<b>0700-1900</b>	<b>China Peak Ski Area</b>			
ENG6 STF 9336F		10/15	<b>J. Covert (T)</b>	11	<b>E-100558</b>	<b>0700-1900</b>	<b>China Peak Ski Area</b>			
ENG3 SNF 341		10/7	<b>C. Cabanas</b>	6	<b>E-400010</b>	<b>0700-1900</b>	<b>China Peak Ski Area</b>			
ENG3 STF 313		10/13	<b>C Daniels</b>	5	<b>E-400158</b>	<b>0700-1900</b>	<b>China Peak Ski Area</b>			
ENG3 SFW 314		10/13	<b>D. Guse</b>	5	<b>E-400159</b>	<b>0700-1900</b>	<b>China Peak Ski Area</b>			
ENG3 STF 346		10/15	<b>M. Scheu</b>	4	<b>E-400160</b>	<b>0700-1900</b>	<b>China Peak Ski Area</b>			
ENG3 STF 345		10/12	<b>P. Green</b>	5	<b>E-400161</b>	<b>0700-1900</b>	<b>China Peak Ski Area</b>			
ENG3 WILDFIRE 316		10/18	<b>J. Lowe</b>	3	<b>E-400164</b>	<b>0700-1900</b>	<b>China Peak Ski Area</b>			
ENG4 E-255		10/11	<b>S. Castello</b>	4	<b>E-400091</b>	<b>0700-1900</b>	<b>China Peak Ski Area</b>			
ENG4 DUKE		10/19	<b>M. Mon</b>	3	<b>E-400155</b>	<b>0700-1900</b>	<b>China Peak Ski Area</b>			
ENG5 ENG63		10/13	<b>H. Stoker</b>	3	<b>E-400081</b>	<b>0700-1900</b>	<b>China Peak Ski Area</b>			
ENG6 NM-517		10/14	<b>S. Brady</b>	3	<b>E-200092</b>	<b>0700-1900</b>	<b>China Peak Ski Area</b>			
ENG6 CIMMARON HILLS-6		10/19		3	<b>E-200636</b>	<b>0700-1900</b>	<b>China Peak Ski Area</b>			
<b>6. Work Assignments:</b>										
Execute defensive firing as needed to defend Vermillion Valley Resort, High Sierra Pack Station and Private structures. Identify areas for indirect line south and east of the 80 / Kaiser Pass Road. Prepare and Implement structure defense plan for Florence Lake, Blaney Meadows and Muir Trail Ranch										
<b>7. Special Instructions:</b>										
NIFC C-32 is the preferred Command Channel within this Division. Call out on TAC when traveling east of Kaiser Pass along 1-way road. REAFs will check in during briefing breakout sessions with DIVS if working in that division for that shift Coordinate structure wrap mission of Heitz Cabin with Auberry Heli-base. Backhaul all trash and excess supplies & equipment Identify sensitive archaeological and historic resource sites. Utilize MIST tactics when in Wilderness areas Coordinate with REAFs for ground disturbing activities in pre-identified areas to protect the Yosemite Toad										
<b>8. Communications</b>										
Name	Ch	Function	Rx Freq	Rx Tone	Tx Freq	Tx Tone	Notes			
NIFC C-5	1	COMMAND	169.7500	T5 - 146.2	167.1000	T5 - 146.2	MUSICK MTN.			
VTAC11	6	TACTICAL	151.1375	T6 - 156.7	151.1375	T6 - 156.7				
A/G TAC	14	A/G TAC	166.6125N		166.6125N					
CALCORD	15	MEDICAL	156.0750N	T6 - 156.7	156.0750N	T6 - 156.7	EMERGENCY ONLY			
GUARD V3	16	AIRGUARD	168.6250N		168.6250N	T1 - 110.9	EMERGENCY ONLY			
<b>9. Prepared by: Name:</b>		M. Weisenberg			RESL		Signature:			
<b>ICS 204</b>		Date/Time: 10/6/2020 2200			Personnel Count: 131					

# ASSIGNMENT LIST (ICS 204 WF)

CONTROLLED UNCLASSIFIED  
INFORMATION//BASIC

<b>1. Incident Name:</b> <b>CREEK</b>	<b>2. Operational Period:</b> Date From: 10/07/2020    Date To: 10/08/20 Time From: 0700            Time To: 0700	<b>3. Branch</b> <b>Division</b>  <b>XX</b> <b>N</b>
--	---	--


<b>4. Operations Personnel:</b>		Page 2 of 2	November
Operations Section Chief: <b>A. McBath</b>	Night Ops: <b>S. Prather</b>		
Branch Director: <b>E. Villa (12), Prentiss (T)</b>	Branch Safety: <b>D. Welch (12), C Rossman (T)(12)</b>		
Division/Group Supervisor: <b>G. Marquez (12), H. Kennedy (T)</b>	Air Attack:		

5. Resources Assigned:		** Resources Below In Bold are 12 Hour **					
Resource Identifier	ALS	LWD	Leader	Personnel	Request #	Hours	Reporting Location
ENG6 CIF 671		10/8	<b>J. Gutierrez</b>	4	<b>E-400015</b>	<b>0700-1900</b>	China Peak Ski Area
ENG6 PACIFIC E69		10/12	<b>Z. Pindell</b>	3	<b>E-400083</b>	<b>0700-1900</b>	China Peak Ski Area
ENG6 LOOMIS		10/15	<b>P. Huddleston</b>	3	<b>E-400089</b>	<b>1900-0700</b>	China Peak Ski Area
ENG6 CHAFFEE V-135		10/15	<b>S. Menz</b>	3	<b>E-400153</b>	<b>0700-1900</b>	China Peak Ski Area
ENG6 HEK JONES2		10/18	<b>D. Sullivan</b>	3	<b>E-400157</b>	<b>0700-1900</b>	China Peak Ski Area
WT PVT E-100057			J. Pehurl	2	E-100057	0700-0700	China Peak Ski Area
WT PVT E-400138		10/15	<b>R. Torres</b>	2	<b>E-400138</b>	<b>0700-1900</b>	China Peak Ski Area
TFLD OSBURN		10/18	<b>K. Osburn</b>	1	<b>O-400092</b>	<b>0700-1900</b>	China Peak Ski Area
TFLD (T) OCCHIPINTI		10/18	<b>T. Occhipinti</b>	1	<b>O-400146</b>	<b>0700-1900</b>	China Peak Ski Area
FEMP FONDACARO		10/17	<b>A. Fondacaro</b>	1	<b>O-400039</b>	<b>0700-1900</b>	China Peak Ski Area
FEMP STAMY		10/9	<b>S. Stamy</b>	1	<b>O-400042</b>	<b>0700-1900</b>	China Peak Ski Area

**6. Work Assignments:**  
Execute defensive firing as needed to defend Vermillion Valley Resort, High Sierra Pack Station and Private structures. Identify areas for indirect line south and east of the 80 / Kaiser Pass Road. Prepare and Implement structure defense plan for Florence Lake, Blaney Meadows and Muir Trail Ranch

**7. Special Instructions:**  
NIFC C-32 is the preferred Command Channel within this Division. Call out on TAC when traveling east of Kaiser Pass along 1-way road. REAFs will check in during briefing breakout sessions with DIVS if working in that division for that shift  
Coordinate structure wrap mission of Heitz Cabin with Auberry Heli-base.  
Backhaul all trash and excess supplies & equipment  
Identify sensitive archaeological and historic resource sites. Utilize MIST tactics when in Wilderness areas  
Coordinate with REAFs for ground disturbing activities in pre-identified areas to protect the Yosemite Toad

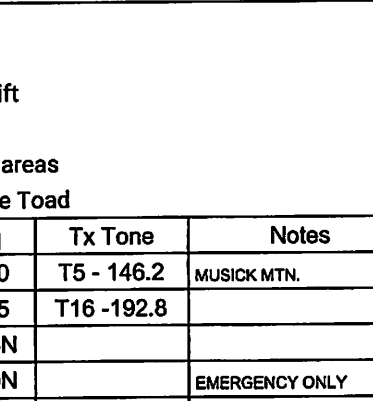
8. Communications							
Name	Ch	Function	Rx Freq	Rx Tone	Tx Freq	Tx Tone	Notes
NIFC C-5	1	COMMAND	169.7500	T5 - 146.2	167.1000	T5 - 146.2	MUSICK MTN.
VTAC11	6	TACTICAL	151.1375	T6 - 156.7	151.1375	T6 - 156.7	
A/G TAC	14	A/G TAC	166.6125N		166.6125N		
CALCORD	15	MEDICAL	156.0750N	T6 - 156.7	156.0750N	T6 - 156.7	EMERGENCY ONLY
GUARD V3	16	AIRGUARD	168.6250N		168.6250N	T1 - 110.9	EMERGENCY ONLY

**9. Prepared by: Name:** M. Weisenberg                      RESL  
Signature: 

**ICS 204**                                      Date/Time: 10/6/2020    2200                                      Personnel Count: 24

# ASSIGNMENT LIST (ICS 204 WF)

CONTROLLED UNCLASSIFIED  
INFORMATION//BASIC

<b>1. Incident Name:</b> <b>CREEK</b>		<b>2. Operational Period:</b> Date From: 10/07/2020    Date To: 10/08/20 Time From: 0700    Time To: 0700				<b>3. Branch</b> <b>XX</b>		<b>Division</b> <b>P</b>	
<b>4. Operations Personnel:</b>						Page 1 of 2		Papa	
Operations Section Chief: <b>A. McBath</b>				Night Ops: <b>S. Prather</b>					
Branch Director: <b>E. Villa (12), Prentiss (T)</b>				Branch Safety: <b>D. Welch (12), C Rossman (T)(12)</b>					
Division/Group Supervisor: <b>J. Hidalgo (12), E. Dehart (T)(12)</b>				Air Attack:					
<b>5. Resources Assigned:</b>		<b>** Resources Below in Bold are 12 Hour **</b>							
Resource Identifier	ALS	LWD	Leader	Personnel	Request #	Hours	Reporting Location		
<b>CRW IHC GROVELAND</b>		<b>10/8</b>	<b>S Meeks</b>	<b>19</b>	<b>C-200080</b>	<b>0700-1900</b>	<b>China Peak Ski Area</b>		
<b>CRW IHC PALOMAR</b>		<b>10/16</b>	<b>J. Ortega</b>	<b>22</b>	<b>O-400019</b>	<b>0700-1900</b>	<b>China Peak Ski Area</b>		
<b>CRW2IA SRV9</b>		<b>10/13</b>	<b>J. Kemick</b>	<b>20</b>	<b>C-400026</b>	<b>0700-1900</b>	<b>China Peak Ski Area</b>		
<b>ENG3 S/T 1521C</b>		<b>10/16</b>	<b>A. Briner</b>	<b>22</b>	<b>E-400017</b>	<b>0700-1900</b>	<b>China Peak Ski Area</b>		
<b>ENG3 INTERIOR 37</b>		<b>10/14</b>	<b>J. Tucker</b>	<b>3</b>	<b>E-400088</b>	<b>0700-1900</b>	<b>China Peak Ski Area</b>		
<b>ENG3 BLM E3132</b>		<b>10/16</b>	<b>M Fogg</b>	<b>4</b>	<b>E-400152</b>	<b>0700-1900</b>	<b>China Peak Ski Area</b>		
<b>DOZ SNF2</b>		<b>10/8</b>	<b>J. Cornell</b>	<b>2</b>	<b>E-8</b>	<b>0700-1900</b>	<b>China Peak Ski Area</b>		
<b>MAS PVT E-100285</b>			<b>G. Mcbride</b>	<b>1</b>	<b>E-100285</b>	<b>0700-1900</b>	<b>China Peak Ski Area</b>		
<b>MAS PVT E-100495</b>			<b>L. Page</b>	<b>1</b>	<b>E-100495</b>	<b>0700-1900</b>	<b>China Peak Ski Area</b>		
<b>MAS PVT E-100500</b>			<b>J. Burkett</b>	<b>1</b>	<b>E-100500</b>	<b>0700-1900</b>	<b>China Peak Ski Area</b>		
<b>WT PVT E-400053</b>		<b>10/11</b>	<b>T. Bohner</b>	<b>1</b>	<b>E-400053</b>	<b>0700-1900</b>	<b>China Peak Ski Area</b>		
<b>WT CNF 222</b>		<b>10/17</b>	<b>N. Romero</b>	<b>2</b>	<b>E-400136</b>	<b>0700-1900</b>	<b>China Peak Ski Area</b>		
<b>WT OES 52</b>			<b>J. Aguda</b>	<b>2</b>	<b>E-39</b>	<b>0700-1900</b>	<b>China Peak Ski Area</b>		
<b>FALM O-272</b>			<b>J. Christian</b>	<b>2</b>	<b>O-272</b>	<b>0700-1900</b>	<b>China Peak Ski Area</b>		
<b>HEQB ROGERS</b>		<b>10/8</b>	<b>D. Rogers</b>	<b>1</b>	<b>O-100678</b>	<b>0700-1900</b>	<b>China Peak Ski Area</b>		
<b>HEQB (T) MACPHERSON</b>		<b>10/12</b>	<b>D. Macpherson</b>	<b>1</b>	<b>O-400075</b>	<b>0700-1900</b>	<b>China Peak Ski Area</b>		
<b>TFLD (T) SCHLAEFER</b>		<b>10/10</b>	<b>M. Schlaefer</b>	<b>1</b>	<b>O-400090</b>	<b>0700-1900</b>	<b>China Peak Ski Area</b>		
<b>EMPF HECKMAN</b>		<b>10/12</b>	<b>M. Heckman</b>	<b>1</b>	<b>O-400076</b>	<b>0700-1900</b>	<b>China Peak Ski Area</b>		
<b>6. Work Assignments:</b>									
Maintain tactical patrol of the structures on the north shore of Huntington Lake from Dowville to China Peak Landing to prevent any further structure loss.									
Secure direct handline from Potter Pass Trail west into the the Kaiser Pass Wilderness halting fire spread. Continue to prep the 80 / Kaiser Pass Road from the intersection of the 05 / Stump Springs Road south towards Kaiser Summit. Initiate firing as directed by DIVS to prevent fire spread to the East.									
<b>7. Special Instructions:</b>									
NIFC C-32 or NIFC C-5 are the preferred Command Channels to use within this Division									
REAFs will check in during briefing breakout sessions with DIVS if working in that division for that shift									
Backhaul all trash and excess supplies & equipment									
Identify sensitive archaeological and historic resource sites. Utilize MIST tactics when in Wilderness areas									
Coordinate with REAFs for ground disturbing activities in pre-identified areas to protect the Yosemite Toad									
Name	Ch	Function	Rx Freq	Rx Tone	Tx Freq	Tx Tone	Notes		
NIFC C-5	1	COMMAND	169.7500	T5 - 146.2	167.1000	T5 - 146.2	MUSICK MTN.		
CDF T25	7	TACTICAL	159.2775	T16 -192.8	159.2775	T16 -192.8			
A/G TAC	14	A/G TAC	166.6125N		166.6125N				
CALCORD	15	MEDICAL	156.0750N	T6 - 156.7	156.0750N		EMERGENCY ONLY		
GUARD V3	16	AIRGUARD	168.6250N		168.6250N	T1 - 110.9	EMERGENCY ONLY		
<b>9. Prepared by: Name:</b> M. Weisenberg			RESL		Signature: 				
<b>ICS 204</b>		Date/Time: 10/6/2020 2200			Personnel Count: 106				



# ASSIGNMENT LIST (ICS 204 WF)

CONTROLLED UNCLASSIFIED  
INFORMATION/BASIC

<b>1. Incident Name:</b> <p style="text-align: center; font-weight: bold;">CREEK</p>	<b>2. Operational Period:</b> Date From: 10/07/2020    Date To: 10/08/20 Time From: 0700            Time To: 0700	<b>3. Branch</b> <b>Division</b> <p style="text-align: center; font-size: 2em; font-weight: bold;">XX                      R</p>
---	---	---

<b>4. Operations Personnel:</b>		Page 1 of 2	Romeo
Operations Section Chief: <b>A. McBath</b>	Night Ops: <b>S. Prather</b>		
Branch Director: <b>E. Villa (12), Prentiss (T)</b>	Branch Safety: <b>D. Welch (12), C Rossman (T)(12)</b>		
Division/Group Supervisor: <b>K. Olsen (12) M. Velazquez(12)</b>	Air Attack:		

5. Resources Assigned:	** Resources Below in Bold are 12 Hour **						
Resource Identifier	ALS	LWD	Leader	Personnel	Request #	Hours	Reporting Location
CRW T2IA UMF4		10/11	<b>T. Wagner</b>	21	<b>C-400028</b>	<b>0700-1900</b>	China Peak Ski Area
ENG3 PVT AMERICAN		10/9	<b>J. Stanovich</b>	3	<b>E-400012</b>	<b>0700-1900</b>	China Peak Ski Area
ENG SPA 2061		10/8	<b>J. Sarah</b>	3	<b>E-400013</b>	<b>0700-1900</b>	China Peak Ski Area
ENG3 303		10/13	<b>L. Martin</b>	3	<b>E-400077</b>	<b>0700-1900</b>	China Peak Ski Area
ENG3 AZ-ELH325		10/13	<b>C. Anthi</b>	3	<b>E-400079</b>	<b>0700-1900</b>	China Peak Ski Area
ENG3 AZ-E55		10/12	<b>D. Mccarthy</b>	4	<b>E-400085</b>	<b>0700-1900</b>	China Peak Ski Area
ENG3 BURNS 321		10/14	<b>C. Sitz</b>	3	<b>E-400087</b>	<b>0700-1900</b>	China Peak Ski Area
ENG6 AZ 1972		10/12	<b>R. Vallejos</b>	3	<b>E-400075</b>	<b>0700-1900</b>	China Peak Ski Area
ENG6 601		10/12	<b>O. Flores</b>	4	<b>E-400076</b>	<b>0700-1900</b>	China Peak Ski Area
ENG4 NM E-6		10/19	<b>R. Norrid</b>	3	<b>E-4000163</b>	<b>0700-1900</b>	China Peak Ski Area
ENG6 INTERIOR 55		10/18	<b>C. Strand</b>	3	<b>E-400165</b>	<b>0700-1900</b>	China Peak Ski Area
DOZ PVT E-100044			<b>P. Ross</b>	1	<b>E-100044</b>	<b>0700-1900</b>	China Peak Ski Area
DOZ PVT E-100144			<b>K. Parrish</b>	1	<b>E-100144</b>	<b>0700-1900</b>	China Peak Ski Area
WT PVT E-100200		10/19	<b>M. Miller</b>	1	<b>E-100200</b>	<b>0700-1900</b>	China Peak Ski Area
WT PVT E-200441		10/16	<b>P. Neri</b>	1	<b>E-200441</b>	<b>0700-1900</b>	China Peak Ski Area
WT PVT E-400056		10/18	<b>J. King</b>	1	<b>E-400056</b>	<b>0700-1900</b>	China Peak Ski Area
WT PVT E-400057		10/18	<b>K. Paschal</b>	1	<b>E-400057</b>	<b>0700-1900</b>	China Peak Ski Area
WT PVT E-400058		10/13	<b>Z. Shinkle</b>	1	<b>E-400058</b>	<b>0700-1900</b>	China Peak Ski Area

**6. Work Assignments:**  
Secure edge to the extent necessary to prevent any further fire spread. Emphasis will be at the Division break between Sierra and Romeo.

**7. Special Instructions:**  
NIFC C-32 or NIFC C-46 are the preferred Command Channels to use within this Division  
REAFs will check in during briefing breakout sessions with DIVS if working in that division for that shift  
Backhaul all trash and excess supplies & equipment  
Identify sensitive archaeological and historic resource sites. Utilize MIST tactics when in Wilderness areas  
Coordinate with REAFs for ground disturbing activities in pre-identified areas to protect the Yosemite Toad

Name	Ch	Function	Rx Freq	Rx Tone	Tx Freq	Tx Tone	Notes
NIFC C-5	1	COMMAND	169.7500	T5 - 146.2	167.1000	T5 - 146.2	MUSICK MTN.
CDF T27	8	TACTICAL	159.3075	T16 -192.8	159.3075	T16 -192.8	
A/G TAC	14	A/G TAC	166.6125N		166.6125N		
CALCORD	15	MEDICAL	156.0750N		156.0750N	T6 - 156.7	EMERGENCY ONLY
GUARD V3	16	AIRGUARD	168.6250N		168.6250N	T1 - 110.9	EMERGENCY ONLY

**9. Prepared by: Name:** M. Weisenberg                      RESL                      Signature:

**ICS 204**                      Date/Time: 10/6/2020    2200                      Personnel Count: 60





# ASSIGNMENT LIST (ICS 204 WF)

CONTROLLED UNCLASSIFIED  
INFORMATION/BASIC

<b>1. Incident Name:</b> <p style="text-align: center; font-weight: bold;">CREEK</p>	<b>2. Operational Period:</b> Date From: 10/07/2020    Date To: 10/08/20 Time From: 0700            Time To: 0700	<b>3. Branch            Division</b> <p style="text-align: center; font-size: 1.5em; font-weight: bold;">XX            Night N/P/R</p>
---	---	---

<b>4. Operations Personnel:</b>		Page 1 of 1
Operations Section Chief: <b>A. McBath</b>	Night Ops: <b>S. Prather</b>	
Branch Director:	Branch Safety: <b>M. Helm</b>	
Division/Group Supervisor: <b>J. Knox (12)</b>	Air Attack:	

5. Resources Assigned:	** Resources Below in Bold are 12 Hour **						
Resource Identifier	ALS	LWD	Leader	Personnel	Request #	Hours	Reporting Location
ENG3 TRI-STATE E2		10/13	<b>R. Pierce</b>	5	<b>E-400086</b>	<b>1900-0700</b>	<b>China Peak Ski Area</b>
ENG3 AZ-RIO E520		10/18	<b>J. Sheldon</b>	4	<b>E-400154</b>	<b>1900-0700</b>	<b>China Peak Ski Area</b>
ENG3 CNF 333		10/17	<b>M. Roads</b>	5	<b>E-400156</b>	<b>1900-0700</b>	<b>China Peak Ski Area</b>
ENG3 E-3636		10/17	<b>S. Meza</b>	5	<b>E-400162</b>	<b>1900-0700</b>	<b>China Peak Ski Area</b>
ENG4 OR-E19		10/13	<b>J. Tibbal</b>	3	<b>E-400080</b>	<b>1900-0700</b>	<b>China Peak Ski Area</b>
ENG6 AZ BR95		10/12	<b>J. Hernandez</b>	4	<b>E-400078</b>	<b>1900-0700</b>	<b>China Peak Ski Area</b>
ENG6 OR-E2		10/13	<b>T. Martinez</b>	3	<b>E-400082</b>	<b>1900-0700</b>	<b>China Peak Ski Area</b>
ENG6 E05		10/13	<b>B. Miranda</b>	3	<b>E-400084</b>	<b>1900-0700</b>	<b>China Peak Ski Area</b>
WT PVT E-400135		10/17	<b>F Caballero</b>	2	<b>E-400135</b>	<b>1900-0700</b>	<b>China Peak Ski Area</b>
TFLD (T) SMITH		10/16	<b>D. Smith</b>	1	<b>O-400089</b>	<b>1900-0700</b>	<b>China Peak Ski Area</b>
EMTF (T) BOYD		10/19	<b>E. Boyd</b>	1	<b>O-400043</b>	<b>1900-0700</b>	<b>China Peak Ski Area</b>

**6. Work Assignments:**  
Execute defensive firing as needed to defend values at risk.

**7. Special Instructions:**  
NIFC C-32 / NIFC C-46 / NIFC C-5 are the preferred Command Channels within this division.  
\*\*\* Night resources use the corresponding Tac channel for the division you are working in, reference 205.  
Call out on VTAC-12 when traveling east of Kaiser Pass along 1-way road  
Backhaul all trash and excess supplies & equipment  
Identify sensitive archaeological and historic resource sites. Utilize MIST tactics when in Wilderness areas

**8. Communications**

Name	Ch	Function	Rx Freq	Rx Tone	Tx Freq	Tx Tone	Notes
NIFC C-5	1	COMMAND	169.7500	T5 - 146.2	167.1000	T5 - 146.2	MUSICK MTN.
VTAC11	11	TACTICAL	154.4525	T6 - 156.7	154.4525	T6 - 156.7	
A/G TAC	14	A/G TAC	166.6125N		166.6125N		
CALCORD	15	MEDICAL	156.0750N	T6 - 156.7	156.0750N	T6 - 156.7	EMERGENCY ONLY
GUARD V3	16	AIRGUARD	168.6250N		168.6250N	T1 - 110.9	EMERGENCY ONLY

<b>9. Prepared by: Name:</b>	M. Weisenberg	RESL	Signature:
ICS 204	Date/Time: 10/6/2020	2200	Personnel Count: 36

# ASSIGNMENT LIST (ICS 204 WF)

CONTROLLED UNCLASSIFIED  
INFORMATION//BASIC

<b>1. Incident Name:</b> <p style="text-align: center; font-weight: bold;">CREEK</p>	<b>2. Operational Period:</b> Date From: 10/07/2020    Date To: 10/08/20 Time From: 0700            Time To: 0700	<b>3. Branch</b> <b>Division</b> <p style="text-align: center; font-weight: bold;">XXV/XXIX                      S/U</p>
<b>4. Operations Personnel:</b>		Page 1 of 1    Sierra/Uniform

Operations Section Chief: <b>A. McBath</b>	Night Ops: <b>S. Prather</b>
Branch Director: <b>M. Bontrager</b>	Branch Safety: <b>M. Sass (T)(12)</b>
Division/Group Supervisor: <b>I. B. Lowry (9430C)</b>	Air Attack:

5. Resources Assigned:	** Resources Below in Bold are 12 Hour **						
Resource Identifier	ALS	LWD	Leader	Personnel	Request #	Hours	Reporting Location
STG SLU 9346G (CCC)		10/12	J. Brant	33	C-100079	0700-0700	DP22
CRW FKU 2		10/12	C. Matthews	12	C-100091	0700-0700	DP22
CRW CNA 13		10/9	J. Warner	23	C-100105	0700-0700	DP22
CRW CNA 14		10/9	P. Crow	23	C-100106	0700-0700	DP22
CRW CNA 15		10/9	G. Rojas	23	C-100107	0700-0700	DP22
STC FKU 9430C		10/10	B. Lowry	18	E-185	0700-0700	DP22
STC FKU 9432C		10/9	J. Dominguez	18	E-100118	0700-0700	DP22
STC MVU 9334C			S. Fralia	16	E-100408	0700-0700	DP22
T/F TEX 143		10/20	T. Jones	16	E-100427	0700-0700	DP22
WT PVT E-100056		10/7	P. Grinnell	2	E-100056	0700-0700	DP22
WT PVT E-100058		10/7	H. Forster	2	E-100058	0700-0700	DP22
WT PVT E-100323		10/11	P. Indihar	1	E-100323	0700-1900	DP22

**6. Work Assignments:**  
Secure fire's edge to the extent necessary to prevent any further fire spread. Focus efforts at the Division break between Sierra and Romeo.

**7. Special Instructions:**  
NIFC C-46 or NIFC C-5 are the preferred Command Channels to use within this Division  
REAFs will check in during briefing breakout sessions with DIVS if working in that division for that shift  
Backhaul all trash and excess supplies & equipment

8. Communications							
Name	Ch	Function	Rx Freq	Rx Tone	Tx Freq	Tx Tone	Notes
NIFC C-5	1	COMMAND	169.7500	T5 - 146.2	167.1000	T5 - 146.2	MUSICK MTN.
CDF T28	9	TACTICAL	151.1825	T16 -192.8	151.1825	T16 -192.8	
A/G TAC	14	A/G TAC	166.6125N		166.6125N		
GUARD V3	16	AIRGUARD	168.6250N		168.6250N	T1 - 110.9	EMERGENCY ONLY
GUARD V3	20	AIRGUARD	168.6250N		168.6250N	T1 - 110.9	EMERGENCY ONLY

<b>9. Prepared by: Name:</b>	M. Weisenberg	RESL	Signature:
<b>ICS 204</b>	Date/Time: 10/6/2020	2200	Personnel Count: 187





# ASSIGNMENT LIST (ICS 204 WF)

CONTROLLED UNCLASSIFIED  
INFORMATION//BASIC

<b>1. Incident Name:</b> <b>CREEK</b>	<b>2. Operational Period:</b> Date From: 10/07/2020    Date To: 10/08/20 Time From: 0700            Time To: 0700	<b>3. Branch</b> <b>Division</b> <b>XXV/XXIX</b> <b>Suppression</b> <b>Repair</b>
<b>4. Operations Personnel:</b>		Page 1 of 3

Operations Section Chief: <b>A. McBath</b>	Night Ops: <b>S. Prather</b>
Branch Director: <b>M. Bontrager</b>	Branch Safety: <b>M. Sass (T)(12)</b>
Division/Group Supervisor: <b>C. Wade (12), C. Borello (12)</b>	Air Attack:

5. Resources Assigned:		** Resources Below in Bold are 12 Hour **					
Resource Identifier	ALS	LWD	Leader	Personnel	Request #	Hours	Reporting Location
CRW FUELS FKU 4349			<b>N. Reader</b>	1	<b>O-100115</b>	<b>0700-1900</b>	<b>Sierra High School</b>
DOZ PVT E-42			<b>C Avila</b>	1	<b>E-42</b>	<b>0700-1900</b>	<b>Sierra High School</b>
DOZ PVT E-100035			<b>D. Moore</b>	1	<b>E-100035</b>	<b>0700-1900</b>	<b>Sierra High School</b>
DOZ PVT E-100045			<b>S. Chriss</b>	2	<b>E-100045</b>	<b>0700-1900</b>	<b>Sierra High School</b>
DOZ PVT E-100048			<b>D. Grove</b>	2	<b>E-100048</b>	<b>0700-1900</b>	<b>Sierra High School</b>
DOZ PVT E-100134			<b>V. Calanchini</b>	2	<b>E-100134</b>	<b>0700-1900</b>	<b>Sierra High School</b>
DOZ PVT E-100136			<b>R. Martin</b>	2	<b>E-100136</b>	<b>0700-1900</b>	<b>Sierra High School</b>
DOZ PVT E-100139			<b>D. Taylor</b>	2	<b>E-100139</b>	<b>0700-1900</b>	<b>Sierra High School</b>
MAS PVT E-100339			<b>E. Butts</b>	1	<b>E-100339</b>	<b>0700-1900</b>	<b>Sierra High School</b>
MAS PVT E-100340			<b>A. Fratarcangeli</b>	1	<b>E-100340</b>	<b>0700-1900</b>	<b>Sierra High School</b>
MAS PVT E-100490			<b>P. Leslie</b>	1	<b>E-100490</b>	<b>0700-1900</b>	<b>Sierra High School</b>
MAS PVT E-100501				1	<b>E-100501</b>	<b>0700-1900</b>	<b>Sierra High School</b>
EXC PVT E-100289			<b>B. Morris</b>	1	<b>E-100289</b>	<b>0700-1900</b>	<b>Sierra High School</b>
EXC PVT E-100401			<b>D. Dial</b>	1	<b>E-100401</b>	<b>0700-1900</b>	<b>Sierra High School</b>
EXC PVT E-100459			<b>J. Cross</b>	1	<b>E-100459</b>	<b>0700-1900</b>	<b>Sierra High School</b>
EXC PVT E-100535			<b>P. Leslie</b>	1	<b>E-100535</b>	<b>0700-1900</b>	<b>Sierra High School</b>
EXC PVT E-100536			<b>R. Mccarthy</b>	1	<b>E-100536</b>	<b>0700-1900</b>	<b>Sierra High School</b>
GRD PVT E-100367			<b>R. Mustin</b>	1	<b>E-100367</b>	<b>0700-1900</b>	<b>Sierra High School</b>

**6. Work Assignments:**  
 Shaver East: Repair roads and control lines.  
 Shaver South: Repair roads and control lines.  
 Road Group: Repair roads in the Stump Springs (05) area.  
 Division V/W break: Repair contingency lines.

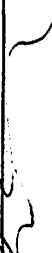
**7. Special Instructions:**  
 Coordinate with REAFs for ground disturbing activities  
 REAFs will check in during briefing breakout sessions with DIVS if working in that division for that shift  
 Backhaul all trash and excess supplies & equipment

8. Communications							
Name	Ch	Function	Rx Freq	Rx Tone	Tx Freq	Tx Tone	Notes
NIFC C-5	1	COMMAND	169.7500	T5 - 146.2	167.1000	T5 - 146.2	MUSICK MTN.
CDF T29	12	TACTICAL	151.3475	T16 -192.8	151.3475	T16 -192.8	
A/G TAC	14	A/G TAC	166.6125N		166.6125N		
GUARD V3	15	MEDICAL	156.0750N		156.0750N	T1 - 110.9	EMERGENCY ONLY
GUARD V3	16	AIRGUARD	168.6250N		168.6250N	T1 - 110.9	EMERGENCY ONLY

<b>9. Prepared by: Name:</b>	M. Weisenberg	RESL	Signature:
<b>ICS 204</b>	Date/Time: 10/6/2020	2200	Personnel Count: 23





INCIDENT RADIO COMMUNICATIONS PLAN I-205			1. INCIDENT NAME		2. DATE/TIME PREPARED		3. OPERATIONAL PERIOD DATE/TIME				
CREEK SOUTH ZONE			CREEK SOUTH ZONE		10/6/2020		10/7/20 0700 TO 10/8/2020 0700				
4. BASIC RADIO CHANNEL UTILIZATION											
Ch #	Function	Channel Name	Assignment	RX Freq	NW	RX Tone/NAC	TX Freq	NW	TX Tone/NAC	Mode Analog (A) Digital (D) Mixed (M)	Remarks
1	COMMAND	NIFC C-5	ALL DIVS	169.7500	N	T5-146.2	167.1000	N	T5-146.2	A	MUSICK MTN (CENTER)
2	COMMAND	NIFC C-46	ALL DIVS	172.0875	N	T5-146.2	162.1750	N	T5-146.2	A	FENCE MEADOW (SOUTHEAST)
3	COMMAND	NIFC C-64	ALL DIVS	172.1000	N	T5-146.2	163.3875	N	T5-146.2	A	BLACK MTN (SOUTHWEST)
4	COMMAND	NIFC C-32	ALL DIVS	171.0875	N	T5-146.2	164.0125	N	T5-146.2	A	WHITE BARK (EAST/NORTHEAST)
5	COMMAND	NIFC C-41	ALL DIVS	173.0250	N	T5-146.2	165.3875	N	T5-146.2	A	MAMMOUTH (EAST)
6	FOREST IA	SNF T5	ALL DIVS	172.2250	N		164.7875	N	T5-146.2	A	MUSICK MTN (FOREST NET IA)
7	TACTICAL	CDF T25	DIV P	159.2775	N	T16-192.8	159.2775	N	T16-192.8	A	DIV PAPA
8	TACTICAL	CDF T27	DIV R	159.3075	N	T16-192.8	159.3075	N	T16-192.8	A	DIV ROMEO
9	TACTICAL	CDF T28	DIV M, SJU	151.1825	N	T16-192.8	151.1825	N	T16-192.8	A	DIVS MIKE, SIERRA/UNIFORM
10	TACTICAL	VTAC-11	DIV N, VW	151.1375	N	T6-156.7	151.1375	N	T6-156.7	A	DIVS NOVEMBER, VICTOR/WHISKEY
11	TACTICAL	VTAC-12	DIV XZ	154.4525	N	T6-156.7	154.4525	N	T6-156.7	A	DIVS X-RAY/ZULU
12	TACTICAL	CDF T29	SUPP REPAIR	151.3475	N	T16-192.8	151.3475	N	T16-192.8	A	SUPPRESSION REPAIR GROUP
13	A/G CMD	A/G CMD	ALL DIVS	167.0625	N		167.0625	N		A	
14	A/G TAC	A/G TAC	ALL DIVS	166.6125	N		166.6125	N		A	
15	MEDICAL	CALCORD	ALL DIVS	156.0750	N	T6-156.7	156.0750	N	T6-156.7	A	EMERGENCY ONLY (MEDEVAC)
16	AIRGUARD	AIRGUARD	ALL DIVS	168.6250	N		168.6250	N	T1-110.9	A	EMERGENCY ONLY
5. Special Instructions:										Sometimes the closest repeater is not the best. If you have poor command communications, try another command repeater (Channels 1-4). They are all linked. If you must hand program go exactly off the 205, including tones. The use of receive and transmit tones removes other, nearby radio traffic from other fires.	
6. I-205 Prepared By: Communications Unit Leader					Name: Ken Earle		Signature: 				



**AIR OPERATIONS SUMMARY ICS-220 NORTH/SOUTH ZONES**

Incident Name / Number Creek CA-SNF-001391	Sunrise 7:04	Startup 7:34	Cutoff 18:03	Sunset 18:33	Time Prepared 1800	Date Prepared October 06, 2020	Prepared By J. Best	
General Remarks, Safety Notes, Hazards, Air Operations Special Equipment, etc. TRACK ALL DIPSITE LOCATIONS / NUMBER OF DIPS / GALLONS TAKEN. TRACK ALL DROP LOCATIONS (DIV) / NUMBER OF DROPS / GALLONS DROPPED ALL GPS DATA TO BE COLLECTED IN DEGREES, MINUTES, DECIMAL MINUTES, FORMAT. If Retardant / Foam / Agent is Dropped Within 300' of a waterway, Notify the AOB and Provide the Following Information: Lat / Long, Estimated Number of Gallons and a Map Detailing The Area.					Shutdown 19:03	Operational Period - Date Wednesday October 7, 2020	Operational Period - Time 0700-2100	
Heilbase Information Mariposa Latitude 37° 30.65 Longitude 120° 02.37 Auberry Latitude 37° 03.937 Longitude -119° 29.307					TFR Information Polygon: Request # A-331 Altitude: 14,500 MSL Centerpoint: Mt Tom Lat 37° 22.5667 Long 119° 10.7616 NOTAMS: 0/8308 Frequency 119.0750 http://tfr.faa.gov/tfrz/list.htm			Rescue Ship Information Name: C407 Phone 657-464-7930 Make/Model: UH-1H Location: Visalia Request Procedures: Contact Incident Communications See Medical Plan For Additional Info

North Zone										
Frequencies	RX	Tone	TX	Tone	AM / FM	Position	Name	Phone	Trainee	Phone
NIFC CMD 50	170.7625	167.9 (7)	162.9375	167.9 (7)	FM	AOBD	Jesse Best	(406) 212-4822		
A/G CMD NORTH	165.4375		165.4375		FM	AOBD SOUTH	John Keesee	(805) 551-6422		
A/G TAC NORTH	169.2875		169.2875		FM	ASGS NORTH	Don Mitchell	(435) 401-0827		
TFR	119.0750		119.0750		AM	ASGS SOUTH	Ray Ucha	(951) 903-4136		
AIR TACTICS	171.1125		171.1125		FM	MARIPOSA	Mike Perez	(760) 937-7115		
ROTOR NORTH	134.4250		134.4250		AM	AUBERRY HB	Brad Nelson	(559) 349-6793		
AIR BRIEF	172.1375		172.1375		FM	ATGS	Mark Bertucelli	(559) 779-1108		
TOLC	119.7250		119.7250		AM	ATGS	Pat Basch	DAYS OFF		
DECK	163.1000		163.1000		FM	HLCOIATGS	Matt Lynde	(530) 941-4600		
CALCORD - MEDICAL	156.0750	156.7 (6)	156.0750	156.7 (6)	FM	HLCO	Casey Jones	(559) 696-3878		
RGUARD -	168.6250		168.6250	110.9 (1)	FM					

South Zone											
Frequencies	RX	Tone	TX	Tone	AM / FM	FAA #	Type	Make/Model	Helibase	Start	Remarks
NIFC CMD 5	169.7500	146.2 (5)	167.1000	146.2 (5)	FM	107Z (507)	2	Bell 209	Fresno	0700	EJ/HLCO/ATGS/A-87
A/G CMD SOUTH	167.0625		167.0625		FM						
A/G TAC SOUTH	166.6125		166.6125		FM	352SA (525)	3	AS 350 B3	Auberry	0700	EJ/HLCO/A-28
TFR	119.0750		119.0750		AM	FHQB (520)	2	205 A1++	Auberry	0700	EJ/Standard/Longline/A-17
AIR TACTICS	171.1125		171.1125		FM	212TH	2	Bell 212	Auberry	0700	CWN/A-244
ROTOR SOUTH	132.5250		132.5250		AM	63HB	2	UH-1H	Auberry	0700	CWN/BUCKET/A-171
AIR BRIEF	172.1375		172.1375		FM	312KA	1	K-1200	Auberry	0700	CWN/Longline/Bucket/A-172
TOLC	119.7250		119.7250		AM	473CH	1	CH-47D	Auberry	0700	SURGE/LL/Bucket/A-322
DECK	163.1000		163.1000		FM						
CALCORD - MEDICAL	156.0750	156.7 (6)	156.0750	156.7 (6)	FM	191SG	3	Bell 206	Maripos	0700	CWN/HLCO/RECON/A-320
AIRGUARD -	168.6250		168.6250	110.9 (1)	FM	46HX	3	Bell 407	Maripos	0700	CWN/HLCO/A-153
						205TK (532)	2	205A1++	Maripos	0700	EJ/Standard/Longline/A-318
						78EC (554)	2	205 A1++	Maripos	0700	EJ/Standard/Longline/A-305
						70K	1	UH-60A	Maripos	0700	CWN/Longline/Bucket/A-55
						461WY	1	CH-46E	Maripos	0700	CWN/Longline/Bucket/A-29
						43HX	1	K-1200	Maripos	0700	CWN/Longline/Bucket/A-130
<b>FIXED WING</b>											
						AA15	Type	Make/Model	Base	Avail	Start
						AA15		AC 690B	Fresno	700	1800

# WATER USAGE REPORT

DATE: \_\_\_\_\_

Division / Group: \_\_\_\_\_

AGENCY ID / VENDOR: \_\_\_\_\_

I.e.. Strike Team 1110C, Acme Water Tenders

REQUEST # \_\_\_\_\_

**TURN INTO FINANCE DAILY**

WATER SOURCE LOCATION	Hydrant	Open source i.e. pond	Tank	Gallons Used	Property Owner / Contact Number if known **

\*\*Please note if you made contact with property owner and their contact.

(Use reverse side if needed.)

Information: \_\_\_\_\_

The intent of this document is intended to track, record and validated the amount of water used on a incident. It's not intended to review the performance of equipment using the water on an incident.

# Wildland Fire COVID-19 Screening Tool

Interim Standard Operating Procedures – 4/15/2020

**NOTE: This Screening Tool represents interim guidance. Additional clarification will be coming as soon as it is defined.**

## DO YOU HAVE ANY OF THESE SYMPTOMS?

Today or in the past 24 hours, have you had any of the following symptoms listed below, in addition to your normal work-related issues?

- Fever, felt feverish, or had chills? Repeated shaking with chills?
- Cough? Shortness of breath or difficulty breathing?
- Muscle pain? Headache? Sore throat?
- New loss of taste and/or smell?

If in doubt about any of these symptoms, consult a Physician.

In the past 14 days, have you had contact with a person known to be infected with the coronavirus (COVID-19)?

**\*Take temperature with touchless thermometer if available\***

## INSTRUCTIONS FOR SCREENING

- If resource is positive for any symptoms prior to mobilization **DO NOT MOBILIZE.**
- At Entries – Consider the adequate number of personnel needed for screening. Although medical personnel are ideal, screeners do not have to be medically trained.
  - o If resource is positive for any symptoms including fever (over 100.4) at entry **DO NOT ANNOUNCE-** ask to step aside.
  - o Escort sick individual to isolation area.
  - o Isolation support personnel should begin documentation. Have sick individual contact Supervisor for further direction.
  - o Notify public health officials.
  - o Have individual transported as appropriate.
  - o Protect and secure any collected Personal Identifiable Information or Personal Health Information.

## FINANCE MESSAGE

### AVAILABLE OPTIONS FOR SUBMITTING TIME:

Resources can submit time electronically (email below) or hard copy. There will be drop boxes for CTRs and shift tickets in each spike camp and at ICP. Documents will be picked up daily at spike camps and ICP and transported to Finance.

If you opt to use the fillable PDF CTR or Shift Ticket you have a couple of options for submitting them to Finance:

Option 1- Resource fills out fillable PDF and submits to Supervisor for signature. Supervisor digitally signs PDF, sends signed copy back to Resource **AND** on to Finance.

Option2 - Resource fills out fillable PDF, Supervisor (if comfortable) signs directly on the same device. Resource e-mails the PDF directly to Finance.

**Crews:** Please submit a copy of your manifest to Finance – it can be electronic or hard copy. Please note any AD crew members on the manifest with their position code and ECI number if known.

**Single Resource ADs:** Please submit your Single Resource Casual Hire form to Finance – it can be electronic or hard copy.

**Cooperators:** Please submit your agreement and resource order to Finance – either electronically or hard copy. Please don't skip any pages and assure that the signature page is shown.

**ALL OVERHEAD, CREWS (INCLUDING AGENCY ENGINE, AIRCRAFT AND HAND CREWS) AND COOPERATORS FROM BOTH THE NORTH AND SOUTH ZONE WILL HAVE THEIR TIME PROCESSED BY NORTH ZONE FINANCE.**

**Contractors:** Please submit the finance portion of your contract/agreement and resource order to Finance – either electronically or hard copy. Please don't skip any pages and assure that the signature page is shown.

**ALL PRIVATE VENDORS FROM BOTH THE NORTH AND SOUTH ZONE WILL HAVE THEIR TIME PROCESSED BY SOUTH ZONE FINANCE.**

Please try to submit time at least every other day. You may choose from any of the options above as long as the copy we receive in finance is legible. What works best for you, will work for us.

**This fire is under Cost Apportionment, All DIVS and OPBD will need to do a daily de-brief with the Cost Apportionment Team by calling 925-588-6902.**

<a href="mailto:2020.creek.finance@firenet.gov">2020.creek.finance@firenet.gov</a>
--

#### **NORTH ZONE FINANCE CONTACTS:**

Finance Chief:	Biddy Simet	406-250-4188
Finance Chief (t):	Denise Middlesworth	406-249-2428
Time Unit Leader (t):	Terry Groesbeck	940-783-3746
Time recorders:	Vickie, Tammy & Debra	940-783-2965
Comp Unit Leader:	Elaine Poser	940-783-2894

#### **PERSONNEL TIME**

#### **SOUTH ZONE FINANCE CONTACTS:**

Finance Chief:	Theresa Fork	530-251-3013
Equipment Time Unit Leader:	Maggie Prochazka	925-532-5448
Equipment Time Recorders:	Jesse, Sarah, Dana & Carla	925-532-5492
Comp Unit Leader:	Elaine Downing	928-486-5295

#### **EQUIPMENT TIME**

# FC-33 INITIAL INPUT FORM

1 2 3 4 5 6 7

Overhead: complete one form per person.  
All Others: complete one form per vehicle.

Request Number  
E 1 2 3 4 .1

State Agency	Incident Number	Incident Name	Incident Index Code	Incident PCA Code
CA	001234		3400	
Strike Team	Resource ID - Fire Assignment	Home Station / Office Location		
S T	E-3499	PASO ROBLES		

YOUR NORMAL DUTY SCHEDULE	24 Hr 8-8	24 Hr 7-7	Other
	<input checked="" type="checkbox"/>		
Portal to Portal?	<input checked="" type="checkbox"/>		
YOUR AGENCY	CAL FIRE		
HOME UNIT	S	L	U
COMMIT	Date		
RELEASE	Time		
	YOUR CELL PHONE #		
	806-622-2086		

PERSONNEL	Schedule		First Name	Rank or Classification	# of Regular Duty Scheduled Hours per Day										
	A	B			Mon	Tue	Wed	Thu	Fri	Sat	Sun				
EMPLOYEE 1															
EMPLOYEE 2															
EMPLOYEE 3															
EMPLOYEE 4															
EMPLOYEE 5															
EMPLOYEE 6															
	<input checked="" type="checkbox"/>	One Box	Johnson	Robert	FC								24	24	24

VEHICLE 1	Schedule	Kind of Vehicle	Radio ID	ID No/X No
	A B			
VEHICLE 2	Schedule	Kind of Vehicle	Radio ID	ID No/X No
	A B			
	<input checked="" type="checkbox"/>	One Box	E-3499	0 2 X 1 2 3
		Chain saw Quantity:	Portable Pump?	

Put a Dozer and its Transport on a single form. All others, use one form per individual vehicle.

## ADDITIONAL INFO



# FC-33 DAILY UPDATE

DATE: 24 Hr 12 Hr

ASSIGNMT:

RQST #:

Radio IDs:	DOZER BLADE HRS	PRTBL PUMP HRS	# OF SAWS	HRS ON EACH SAW	NOTES
<i>ST Leader:</i>					
<i>Engine/Crew:</i>					

omments (*any changes?*):

CELL PHONE #:

# FC-33 DAILY UPDATE

DATE: 24 Hr 12 Hr

ASSIGNMT:

RQST #:

Radio IDs:	DOZER BLADE HRS	PRTBL PUMP HRS	# OF SAWS	HRS ON EACH SAW	NOTES
<i>ST Leader:</i>					
<i>Engine/Crew:</i>					

Comments (*any changes?*):

CELL PHONE #:

# SHIFT TICKET EXAMPLE

EMERGENCY SHIFT TICKET and EVALUATION FORM					Contractor Name		
Incident or Project Name <b>TUBBS</b>			Incident Number <b>CALNU010045</b>		Request Number <b>E#</b>		
Agreement Number <b>CZU-0000023987</b>					Operator #1 <b>BOB SMITH</b>		
Equipment Make <b>CAT</b>			Equipment Model / Type <b>D6M, DZR type 2</b>			Operator #2 <b>CHRIS SMITH</b>	
Serial Number <b>678432</b>			Licence Number <b>N/A</b>			Operator Furnished By: <input checked="" type="checkbox"/> Contractor <input type="checkbox"/> Government	
Equipment Use (Circle) <b>Hours</b> Days / Miles					Operating Supplies Furnished By: <input checked="" type="checkbox"/> Contractor <input type="checkbox"/> Government		
Date Mo / Day	Start	Stop	Work	Assignment			Equipment Status
8/3	0700	2400	17	DIV M			<input checked="" type="checkbox"/> Inspected <input type="checkbox"/> Under Agreement
8/4	0001	0700	7	DIV M			<input type="checkbox"/> Released by Government <input type="checkbox"/> Under Agreement
					Remarks/Comments ** <b>2 OPERATORS</b>		
Vendor Rating					Govt. Rep. Name and Position - PRINT <b>Mike Weber - HEQB</b>		
					Govt. Rep. Signature <i>Mike Weber</i>		
Met Performance Expectations					Contractor Signature <i>Bob Smith</i>		
Equipment in Safe Working Condition					Date <b>08/04/20</b>		
Operator Skill Level					Time <b>0700</b>		
Operates Safely					CALFIRE 297 (Rev 3-2011)		
Operator's Cooperation Level					Pink - Finance		
Overall Performance					Blue - Home Unit HE Coordinator		
					Yellow - Vendor		
					White - Govt Representative		

\* NOTE: Any rating of POOR requires an explanation in Comment Section.  
\*\*Final evaluation or for more documentation, use an ICS Form 230 or equivalent.

EMERGENCY SHIFT TICKET and EVALUATION FORM					Contractor Name		
The responsible Government Officer will complete this form each shift							
Incident or Project Name <b>TUBBS</b>			Incident Number <b>CALNU010045</b>		Request Number <b>E #</b>		
Agreement Number <b>CZU-0000023987</b>					Operator #1 <b>BOB SMITH</b>		
Equipment Make <b>KENWORTH</b>			Equipment Model / Type <b>18 WHEEL TRANSPORT</b>			Operator #2 <b>CHRIS SMITH</b>	
Serial Number <b>VIN #</b>			Licence Number <b>9999999</b>			Operator Furnished By: <input checked="" type="checkbox"/> Contractor <input type="checkbox"/> Government	
Equipment Use (Circle) <b>Hours</b> Days / Miles					Operating Supplies Furnished By: <input checked="" type="checkbox"/> Contractor <input type="checkbox"/> Government		
Date Mo / Day	Start	Stop	Work	Assignment			Equipment Status
8/3	0700	2400	17	DIV M			<input checked="" type="checkbox"/> Inspected <input type="checkbox"/> Under Agreement
8/4	0001	0700	7	DIV M			<input type="checkbox"/> Released by Government <input type="checkbox"/> Under Agreement
					Remarks/Comments ** <b>2 OPERATORS</b>		
Vendor Rating					Govt. Rep. Name and Position - PRINT <b>Mike Weber - HEQB</b>		
					Govt. Rep. Signature <i>Mike Weber</i>		
Met Performance Expectations					Contractor Signature <i>Bob Smith</i>		
Equipment in Safe Working Condition					Date <b>08/04/15</b>		
Operator Skill Level					Time <b>0800</b>		
Operates Safely					CALFIRE 297 (Rev 3-2011)		
Operator's Cooperation Level					Pink - Finance		
Overall Performance					Blue - Home Unit HE Coordinator		
					Yellow - Vendor		
					White - Govt Representative		

\* NOTE: Any rating of POOR requires an explanation in Comment Section.  
\*\*Final evaluation or for more documentation, use an ICS Form 230 or equivalent.

**Turn shift tickets into Finance.**

# SHIFT TICKET EXAMPLE

EMERGENCY SHIFT TICKET and EVALUATION FORM					Contractor Name		
Incident or Project Name <b>LILAC INC</b>			Incident Number <b>CAMVU 024612</b>		Request Number <b>E #</b>		
Agreement Number <b>MEU - 0000012345</b>					Operator #1 <b>JOHN HANKS</b>		
Equipment Make <b>FREIGHTLINER</b>			Equipment Model / Type <b>WATER TENDER 2500+ TYPE 1</b>			Operator #2 <b></b>	
Serial Number <b>VIN#</b>			Licence Number <b>55555555</b>			Operator Furnished By: <input checked="" type="checkbox"/> Contractor <input type="checkbox"/> Government	
Equipment Use (Circle) <b>Hours</b> Days / Miles					Operating Supplies Furnished By: <input checked="" type="checkbox"/> Contractor <input type="checkbox"/> Government		
Date Mo / Day Start Stop Work			Assignment			Equipment Status <input checked="" type="checkbox"/> Inspected <input checked="" type="checkbox"/> Under Agreement	
12/8 0700 1900 12			DIV A			Released by Government <input type="checkbox"/> Withdrawn by Contractor <input type="checkbox"/>	
12/8 1900 2400 5			OFF SHIFT			Remarks/Comments **  <b>ONE OPERATOR</b>	
12/9 0001 0700 7			OFF SHIFT				
Vendor Rating Poor* Avg. Good Exc. N/A					Govt. Rep. Name and Position - PRINT <b>Mike Weber - DIVS</b>		
Met Performance Expectations					Govt. Rep. Signature <i>Mike Weber</i>		
Equipment in Safe Working Condition					Contractor Signature <b>JOHN HANKS</b>		
Operator Skill Level					Date <b>12/08/20</b>		
Operates Safely					Time <b>1900</b>		
Operator's Cooperation Level					CALFIRE 297 (Rev 3-2011)		
Overall Performance					* NOTE: Any rating of POOR requires an explanation in Comment Section.		
Pink - Finance					**Final evaluation or for more documentation, use an ICS Form 230 or equivalent.		
Blue - Home Unit HE Coordinator					White - Govt Representative		
Yellow - Vendor							

EMERGENCY SHIFT TICKET and EVALUATION FORM					Contractor Name			
The responsible Government Officer will complete this form each shift								
Incident or Project Name <b>LILAC INC</b>			Incident Number <b>CAMVU 024612</b>		Request Number <b>E #</b>			
Agreement Number <b>BTU-0000329876</b>					Operator #1 <b>BOB SMITH</b>			
Equipment Make <b>PETERBILT</b>			Equipment Model / Type <b>WATER TENDER 2500 + TYPE 1</b>			Operator #2 <b>BILL SMITH</b>		
Serial Number <b>VIN #</b>			Licence Number <b>9999999</b>			Operator Furnished By: <input checked="" type="checkbox"/> Contractor <input type="checkbox"/> Government		
Equipment Use (Circle) <b>Hours</b> Days / Miles					Operating Supplies Furnished By: <input checked="" type="checkbox"/> Contractor <input type="checkbox"/> Government			
Date Mo / Day Start Stop Work			Assignment			Equipment Status <input checked="" type="checkbox"/> Inspected <input checked="" type="checkbox"/> Under Agreement		
12/8 0700 2400 17			DIV M			Released by Government <input type="checkbox"/> Withdrawn by Contractor <input type="checkbox"/>		
12/9 0001 0700 7			DIV M			Remarks/Comments **  <b>2 OPERATORS</b>		
Vendor Rating Poor* Avg. Good Exc. N/A					Govt. Rep. Name and Position - PRINT <b>Mike Weber - DIVS</b>			
Met Performance Expectations					Govt. Rep. Signature <i>Mike Weber</i>			
Equipment in Safe Working Condition					Contractor Signature <i>Bill Smith</i>			
Operator Skill Level					Date <b>12/09/20</b>			
Operates Safely					Time <b>0700</b>			
Operator's Cooperation Level					CALFIRE 297 (Rev 3-2011)			
Overall Performance					* NOTE: Any rating of POOR requires an explanation in Comment Section.			
Pink - Finance					**Final evaluation or for more documentation, use an ICS Form 230 or equivalent.			
Blue - Home Unit HE Coordinator					White - Govt Representative			
Yellow - Vendor								

**Turn shift tickets into Finance.**

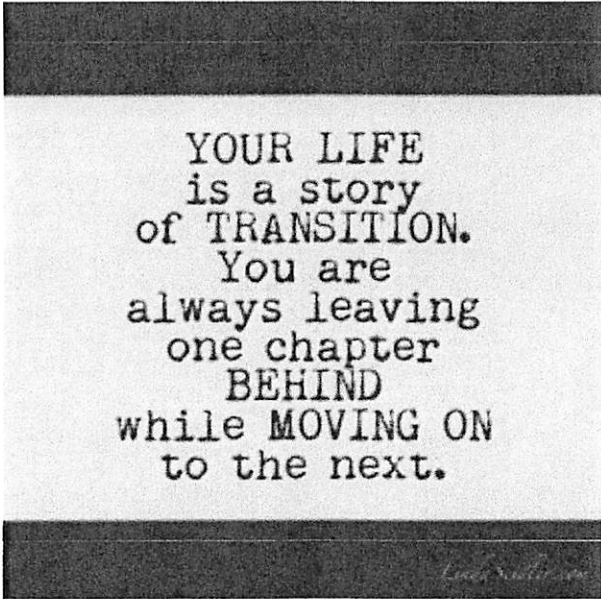


## Human Resource Message



# Transition

Transition is the process or a period of change from one state to another. This fire behavior and growth has transitioned across the landscape. As Team 5 transitions with Team 14, there will be some fluid changes. Embrace the changes, ideas, and actions of others. as we all are looking towards the same goals. Please focus on the good work of those around you. Do your part to include everyone coming in by providing your knowledge and experience in this environment.



YOUR LIFE  
is a story  
of TRANSITION.  
You are  
always leaving  
one chapter  
BEHIND  
while MOVING ON  
to the next.

Andrea Cabida HRSP- 707-330-9939; [andrea.cabida@usda.gov](mailto:andrea.cabida@usda.gov); I am located at the China Peak camp. However, I will be moving to ICP on Wednesday afternoon for transition. Please call, text or email me anytime.

# Peer Support Team Message:

## INCIDENT PEER SUPPORT:

We have a few people on the incident for any peer support related needs. The best way to get a hold of them is to call them directly.

**Amber Henderson 805 794-1690**

**Mike DeLeo 805 573-2419**

or

**CAL FIRE Peer Support/Helpline**

**916-445-4337**

**Below are other Team Members not on the incident who can also be contacted directly:**

**Tony Howard 916-224-1543**

**Mike Aiello 916-584-0548**

**Warren Parrish 916-823-6641**

**Shawna Powell-530 717-0667**

**Nikole Schutz 916-709-0434**

**Jeremy Sanders- 916 281-6472**

**Amy Head 916-956-3277**

**Chris Lomanto 916-247-6974**

**Connie Quarisa 916-213-8697**

Watch for the signs and symptoms of stress in yourself and the people around you. Try and stay positive and get much needed rest when you can. We can do this, together!

**Stay Healthy, Stay Alert and Stay Strong!**

*CAL FIRE Employees can also contact EAP directly at: 1-866-327-4762*

## RESOURCE ADVISOR MESSAGE

### Reporting of Cultural Sites

- Do not use the radio. Looters listen to our frequencies and will note where you find things.
- Grab a GPS point, bump it up the chain of command or directly inform a Resource Advisor on the line or in camp.

### Stay Out! – Flagging Combinations for Sensitive Areas

- READs will be using flagging for areas to avoid suppression activities. There are two pieces to watch for.
  - Strip of white and a strip of blue/black.
- For more information, please consult with a READ.

### Food on the Line Attract Wildlife Over Time.

- Keep food off the line as much as possible. It lures in wildlife, especially on indirect and contingency lines. Food associate's wildlife to humans and could bring about a dangerous situation to others on the line.

### Riparian Areas

- Meadows are natural barriers. Tie the line to them and not through them.
- Stream and creeks should be approached with care. If needing to cross, minimize damage (i.e. on a dozer lift the blade and only track over) to prevent post-fire stability issues. Do not push or cut line through.

### Water Drafting Sites

- Access the water source while trying your best to minimize damage to the soil and vegetation.
- If using a portable pump, make sure there is a spill kit and absorption pads to catch any accidental spills.
- Place portable pumps as far away as you can from the water source. Use screens on the intakes.
- Store fuel cans away from the water source and on a flat surface.

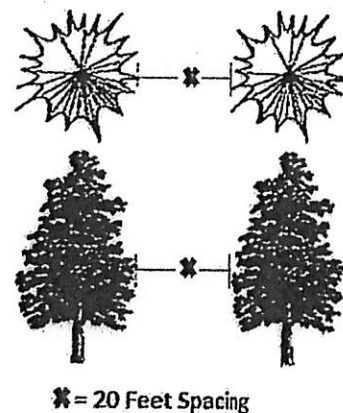
### Tree Felling During Fire Line Creation

- Only cut down trees that are necessary during line construction.
  - Ask yourself, "do I really need to remove this tree? Would removal of lower hanging limbs be sufficient?"
- Avoid cutting hardwoods like black oaks when possible.

### Removing Fuels in the Forest

Trees across the Sierra National Forest have a monetary value. If this can be done safely and without compromising the line, consider creating a shaded fuel break. A shaded fuel break means some trees will remain with a certain spacing as stated below. This more commonly applies to indirect and contingency lines.

1. Cut trees with a 20' x 20' crown spacing. This means leave one tree untouched every 20 feet with all other trees removed. The 20 feet spacing is measured from the edge of the untouched tree's branches to the next untouched tree (see image to the right). The single tree left should be undamaged and appear healthy. *Healthy = no dead tops, multi tops or obvious signs of disease*
2. Deck all trees cut over a 10" DBH. Decking is to stack the trees in a linear fashion.



### **Removal of Fire Burnt Trees on Federal Land along Roadways**

Clearing trees along the roadways on National Forest land needs to follow the following guidelines:

#### **Cut trees that:**

- No longer have any needles left or remaining needles are black, charred and dry
- Have 60% or more of the green crown (branches with needles) that is scorched
- Have deeply charred bark that no longer has any defining characteristics such as bark shows no grooves, no fissures, and no possible puzzle like appearance and/or natural coloration.

#### **Keep trees that are:**

- Vigorous and most likely to survive. These should have green, pliable needles, and have 40% or more of a green crown.
- If a tree has 40% or more of a green crown and the bole of the tree is not burnt through, consider leaving the tree.
- Tree has defining characteristics like bark shows grooves, fissures, and may have a puzzle like appearance and/or natural coloration.
- Not a hazard to the road.

Trees that are painted with a green letter "L" are NOT to be cut. They are "Leave" trees.

### **OHV Routes (Brewer, Red Mtn, & Coyote Lakes Areas)**

- Do not use heavy equipment on these routes. They will also likely damage the heavy equipment due to large cobbles and boulders. These are highly prized 4x4 routes that attract people from all over the country.
- Constructing line to meet up with the OHV routes is allowed.
- Using existing OHV routes as a firing line is allowed.

### **Keep up the good work for cultural and natural resources by doing the following:**

- Picking up trash/micro-trash.
- Removing unused flagging.
- Sharing suppression information and working alongside READs.
- To the extent possible, when moving on to a new area leave the former better than you found it.

## **PUBLIC INFORMATION SECTION/ CREEK FIRE**

**PUBLIC INFORMATION: (844)-668-3473**

**NORTH ZONE MEDIA: (844)-668-3473**

**SOUTH ZONE MEDIA: (559)-790-6374**

### **FEDERAL FIRE SOCIAL MEDIA POLICY**

Social media posts reflect on the professionalism of your crew, your agency and the Wildland Firefighting Community. The U.S. Forest Service has enjoyed a reputation as a leader in wildland firefighting for over 100 years. Protect our legacy with good conduct on the Fireline as well as online. When assigned to a federal fire you are considered a federal employee under the delegation of authority by the host agency. Even if you are a contractor, AD or from a partner agency we recommend that follow professional guidelines and ethical best practice standards which apply to federal employees all the time.

### **CAL FIRE SOCIAL MEDIA POLICY**

When assigned to a CAL FIRE incident you will adhere to the CAL FIRE Social Media Policy, Section 0691.

### **MEDIA**

Section 409.5 (d) of the California State Penal Code allows the news media to enter scenes of disaster, riot or civil disturbance. Properly identified members of the news media shall not be restricted from entering locations specified within the code. However, this does not include crime scenes, private property and does not imply that the news media may interfere with incident operations while they are in the areas of concern.

### **LOST AND FOUND**

Lost & Found remains at Sierra High School 33326 Lodge Rd, Tollhouse, CA 93667. Items will be located in the Fire Preventions Logo Trailer that is staffed by PIO's assigned to the Creek Fire. The trailer is in the front parking lot between the two gyms at the High School.

Mail continues to be accepted at: CAL FIRE FKU – 210 S. Academy Ave. Sanger, CA 93657

Please include the following information...

**NAME:**

**O#:**

**Contact number:**

# Travel Map

Creek Incident

CA-SNF-001391



## East Side of Fire from Sierra Camp

Take Lodge Rd NVV 1.1 miles to SR-168. Take a right on SR-168 for approximately 37 miles.

## West Side of Fire from Sierra Camp

Take Lodge Rd NVV 1.1 miles to SR-168. West on SR-168 for 1.6 miles to Auberry Rd. North on Auberry Rd for 2.9 miles. Right on Tollhouse Rd for 6.3 miles.

## West Side of Fire from North ICP

Take Rd 200 NE for 14 miles. Left on Rd 222 for 0.7 miles.

## East Side of Fire from South ICP

Take Rd 200 W for 0.4 miles to SR-41. N on SR-41 for 2.4 miles. Right on Big Sandy Rd for 6.5 miles. Left on Sky Ranch Rd for 2.6 miles. Right on "Save the Rock" Rd for 2.2 miles.

## Sierra Camp Location

33326 Lodge Rd, Tollhouse, CA 93667

## North ICP Location

+5077 Road 200, O Neals, CA 93645

## South ICP Location

808 Fourth St., Clovis, CA

## Ground Support Location

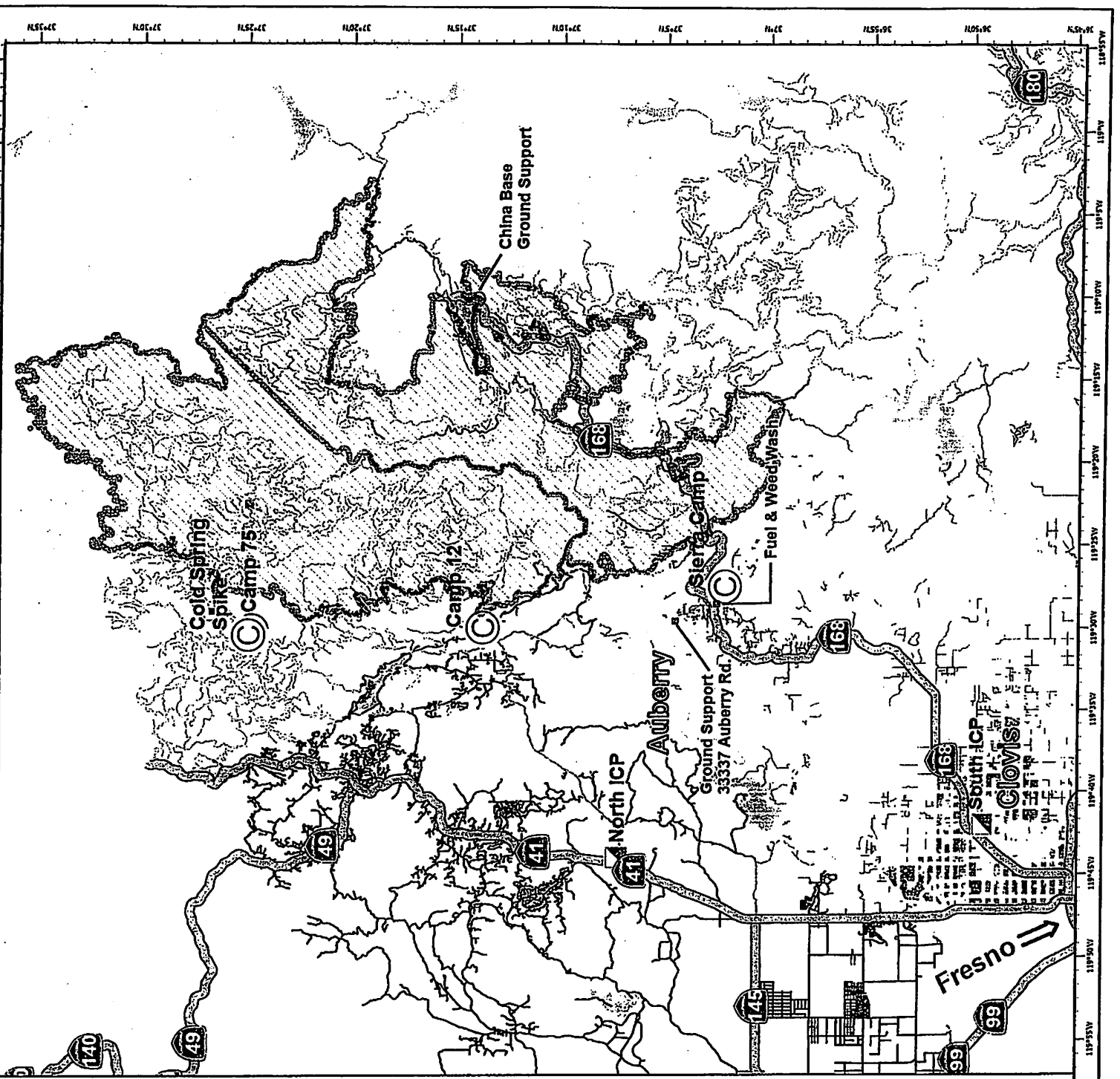
2 miles N on Auberry Rd from SR-168

## Fuel and Weed Wash Location

1000 Ft. N at the intersection of SR-168 & Lodge Rd.

NAD 83 California Tenth Albers

9/29/2020 @ 08:21



# **CHINA PEAK CAMP**

## **LOGISTICS MESSAGE**

### **SERVICES SCHEDULE**

**For Stars Catering:**

**Breakfast: 0600-0900**

**Dinner: 1700-2100**

**Sack Lunch Distribution: 0600-2200**

**Showers: 0500-1200**

**1400-2300**

**Fuel Tender: Red Triangle 0630-0830**

**1730-2030**

**Medical: Frontline 24 hr**

**Operations:**

**Day: Alex McBath 530-526-1320**

**Night: Steve Burns 530-545-3991**

**Logistics: 661-747-2292**

**Day Sleeping: Contact Facilities**

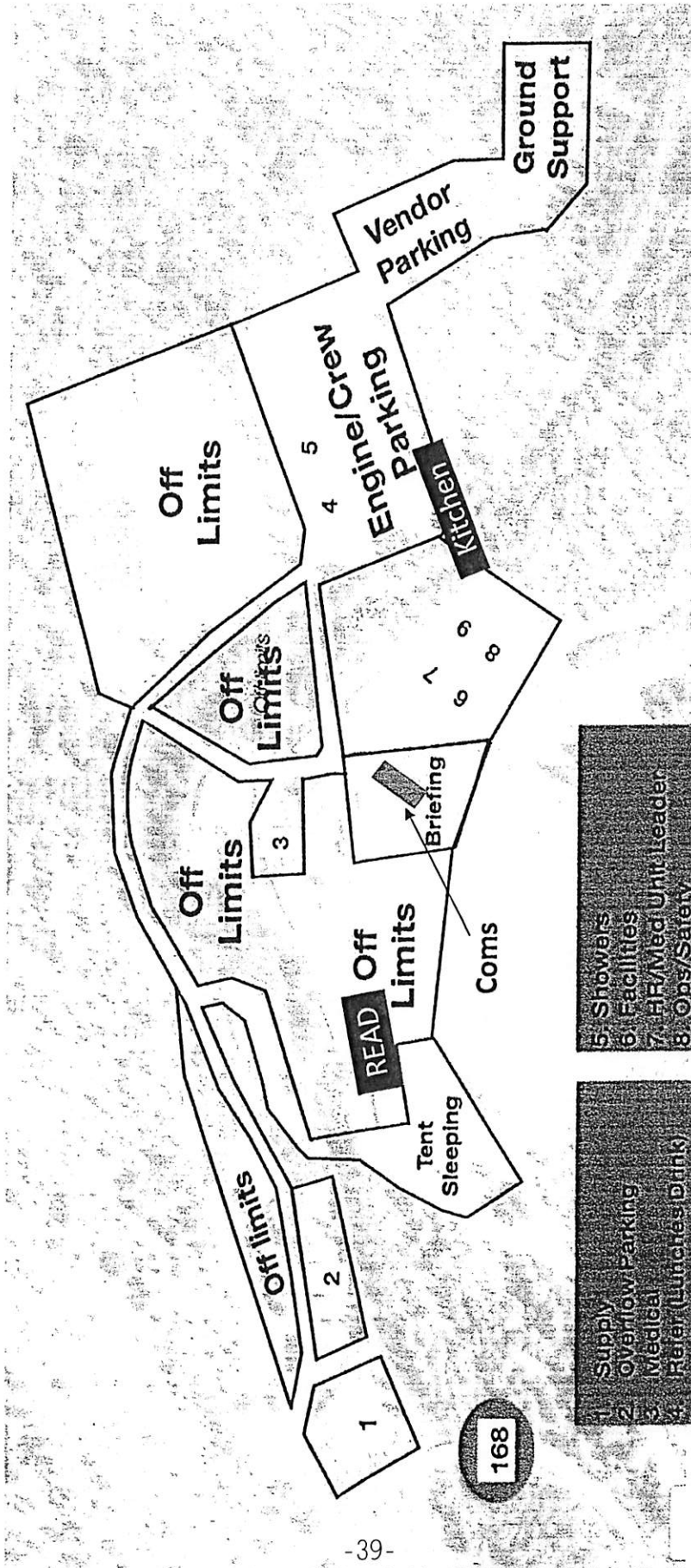
**China Peak Ground Support: 530-251-6492**

**Mechanic: 208-369-0802**

**Mechanic: 575-937-2228**



**Creek Fire**  
**China Peak Basecamp**  
 59265 Highway 168  
 LakeShore, CA 93634



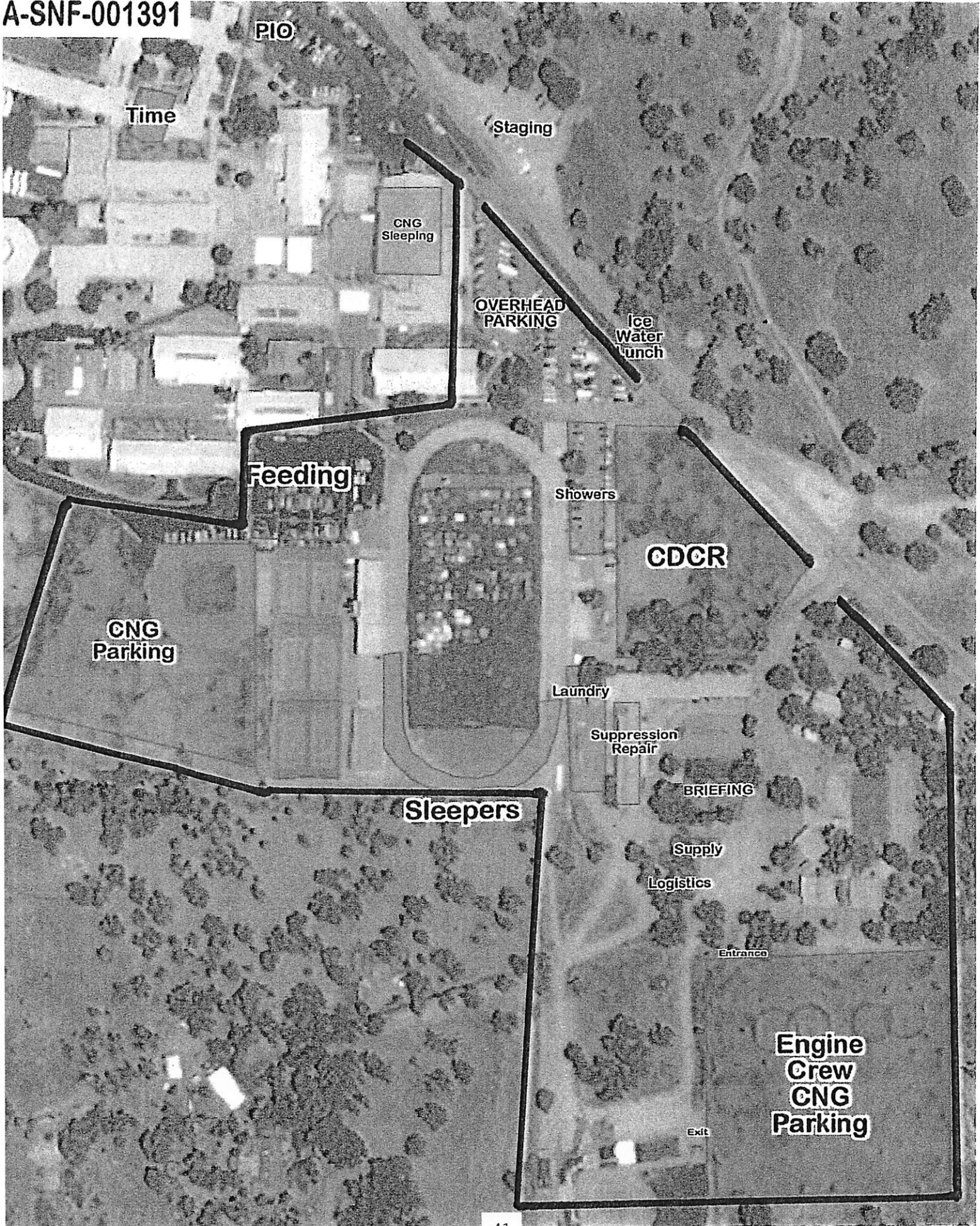
- 5. Showers
- 6. Facilities
- 7. HR/Med Unit Leader
- 8. Ops/Safety
- 9. Supply/Logistics

- 1. Supply overflow parking
- 2. Medical
- 3. Refers (Lunches/Drink)
- 5. Showers



**SIERRA CAMP**  
**LOGISTICS MESSAGE**  
**SERVICES SCHEDULE**

MKU:	
Breakfast:	0500-1100
Dinner:	1700-2200
Sack Lunch Distribution:	0600-2000
Laundry Service:	0600-2200
Showers:	24 hr Service
Medical:	911
Fuel: Hw168 X Lodge	24 hr Service
Operations: Jim McDougald	559-281-4304
Logistics:	925-588-6883
Accommodations:	925-532-5579
Sierra Ground Support: 333337 Auberry Rd.	
Mechanic: 24 hr	925-532-5573
Hired Equipment/HEMS	925-532-5607
Weed Wash	0600-2100



Demob Process for South Zone  
**Federal, State, County & Local Resources**

Start at China Peak:

- 1) Get DEMOB form ICS 221, contact Frank Baker in Demob.
- 2) Check out of Supply at China Peak.
- 3) If you are a Federal Resource call North Zone Finance at 940-783-2965
- 4) Go to Ground Support (vehicle inspection) 33337 Auberry Rd.  
All tactical equipment and AOV's must go through ground support. If you're in a rental you can skip this.
- 5) Go to Weed Wash. All resources coming off the line **MUST** go through Weed Wash. (Located at Hwy 168 and Lodge Road on the north/east side of the road.)  
**You will have to return back to ground support and weed wash if you do not get inspected and washed before coming down to ICP!!!**
- 6) State, go to CalFire Finance at: Hilton Hotel Fresno Convention Center 2233 Ventura St. Fresno. County, Local Gov't, OES Resources, stop by OES @ Sierra High School or bring F42 to South Zone Finance at Veterans Memorial Building 808 N. 4th St. Clovis.
- 7) Go to Veterans Memorial 808 N. 4<sup>th</sup> St. Clovis
  - a) Go to Comm Unit
  - b) Go to Demob

All resources that require an OF-288 (FTR) **MUST** clear TIMES with North Zone Finance before leaving the Creek Fire. For questions call 682-220-4332

Extensions: You must get approval from both the Division Supervisor and your agency. Bring extension form to check in at Veterans Memorial Clovis.

Questions Demob South (916) 591-9008



10/07/2020

**TENTATIVE RELEASE**

CREEK US-CA-SNF-001391



**CREWS**

C-100104	0800	(CC)	SANTA MARIA 8
C-100110	0800	(HC2)	CNA CREW 18
C-200066	0800	(HC2)	COBRAS - 5
C-400005	0800	(HC1)	CREW-T1- ARROWHEAD IHC
C-200067	0900	(HC2)	BLACK EAGLES - 6

**EQUIPMENT**

E-200367	0800	(DOZ2)	NZ AZ-ASF D12
E-200614	0900	(EQD)	MADERA TF 5077
E-200610	0930	(ENG3)	MAYER E24
E-33	1000	(ES6)	9424F
E-200253	1000	(SKD1)	NZ BULL CREEK FORESTRY
E-400171	1700	(FT2)	MISC - FUEL TENDER, T2 -

**OVERHEAD**

O-200463	0800	(DIVS)	HENRY, FERNANDO OMAR
O-77	0800	(FMOD)	NORTH ZONE
O-400043	0830	(EMTF)	BOYD, ERIC
O-100736	0830	(MEDL)	ORLANDO, JEFF
O-78	0900	(FMOD)	A & F ENTERPRISES
O-100465	0900	(FMOD)	THE TREE GUYS
O-200353	1000	(READ)	RANDALL, JOAN T
O-100573	1000	(AREP)	SCHACHER, RICK
O-200500	1600	(STPS)	WOOTEN, EVERETTE EARL
O-200540	1800	(DIVS)	BORNONG, BERNIE RICHARD



**It's Time To Go!**



10/08/2020

TENTATIVE RELEASE

CREEK US-CA-SNF-001391



**CREWS**

C-100090	0900	(HC2I)	FKU-T2 IA-CREW 1
C-100108	0930	(HC2)	CNA CREW 16
C-400012	0930	(HC2I)	CREW-T2- SQF-COBRAS - 1
C-400020	1000	(HC1)	ARROYO GRANDE IHC
C-400021	1100	(HC1)	LAGUNA IHC

**EQUIPMENT**

E-400011	0000	(ENG3)	ENGINE - T3 - SNF 42 (ENGINE -
E-100058	1100	(WTS1)	WATER TENDER - T1 - KRITZ
E-100285	1200	(MAST)	EXCAVATOR - 16.1 - 21 TON
E-100500	1230	(MAST)	EXCAVATOR - 16.1-21 TON
E-400010	1300	(ENG3)	CABANAS ENG 341
E-200563	1600	(ENG3)	SNF 312
E-200564	1700	(ENG3)	SNF E-52

**OVERHEAD**

O-100753	0000	(MCAD)	RICHARD, DANNY
O-200410	0800	(FMOD)	A&E TREE REMOVAL
O-365.32	0800	(DMOB)	MONTGOMERY, BARBARA EARLE
O-400095	0800	(FMOD)	TIMBERSMITH TREE/FORESTRY
O-277	1200	(FMOD)	NORTH ZONE FALLERS INC.-
O-71	1300	(FAL1)	DANIEL S. ROBLES, FALLER TULE



10/09/2020

TENTATIVE RELEASE

CREEK US-CA-SNF-001391



**CREWS**

C-200080      0800                      (HC2I)                      GROVELAND CREW 4

**EQUIPMENT**

E-8                      0800                      (DOZ2)                      DOZER - T2 - DOZER 2 SNF  
E-100056              0830                      (WTS1)                      GRINNELL FIRE  
E-100282              0900                      (WTT1)                      WATER TENDER - T1 -  
E-400013              1000                      (ENG6)                      SPA-E2061  
E-400015              1100                      (ENG6)                      ENG-T6-CIF E671

**OVERHEAD**

O-100540              0700                      (PIOF)                      HENDERSON, CHRISTINA  
O-400015              0830                      (PIO1)                      KLIEST, STEVEN MICHAEL  
O-100755              0830                      (THSP)                      NEGRETE, MAYRA  
O-100672              0930                      (HEQB)                      NETZ, PAUL  
O-100678              1000                      (HEQB)                      ROGERS, DAVE  
O-400147              1230                      (EQTR)                      CARDOZA, HOLLY A  
O-200522              1800                      (PIOF)                      WHARTON, ELIZABETH

**If you believe you demob date is wrong please contact demob at (915)591-9008**

# ***Training Specialist Creek – South Zone (Remote)***

**The Training Specialist is working remotely. Training Specialist Contact Information:**

- Bob Rivelle
- Call/Text: 707.498.1761
- Email: robert\_rivelle@nps.gov
- Available between 0630-2200 (Daily)

**How to register as a Trainee:**

- Use the QR code below. If you're unable to register using the QR code, please call 707.498.1761.
- If you registered with a different Training Specialist during this assignment, you will need to re-register.
- Once registered, you will receive text and email updates.

**To close-out your training assignment:**

1. **Trainer:** Complete and Evaluation Record in the back of the Position Task Book and make as many entries as possible within the individual tasks. Discuss this with your Trainee.
2. **Trainer:** Complete an individual performance rating (ICS 225) and go over the performance rating with your Trainee.
3. **Trainee:** Complete the Exit Interview.
4. Once completed, the Trainee and the Training Specialist will have a brief conversation to discuss the Position Task Book.

**Training QR Code Registration:**



**Trainee Exit Interview QR Code:**



**BLANK**



## LINE ORDER FORM

ORDER #	DATE & TIME ORDERED Received from the Line	WHO PLACED ORDER DIVS, OPS, etc...	DELIVER to (DIV, Helispot, DP, etc.) Division, Heli-Spot, Drop Point, etc.	MODE of DEIVERY Drive, Helo, pick-up			
<b>Order Received in Communications By:</b>				<b>TIME:</b>			
<b>Communications Relayed/Placed the Order To:</b>				<b>TIME:</b>			
<b>Order Shipped to the Line By (Name):</b>				<b>TIME:</b>			
ITEM#	DESCRIPTION			AMOUNT			
1	<b>1,000 Foot Hose Lay:</b> Includes the following 10 lengths, 1 ½" x 100' Hose. 10 lengths, 1" x 100' Hose. 10ea. 1 ½" Gated Wyes. 10ea. 1 ½" to 1" Reducers. 10ea. 1" Nozzles.						
2	<b>2,000 Foot Hose Lay:</b> Includes the following 20 lengths, 1 ½" x 100' Hose. 20 lengths, 1" x 100' Hose. 20ea. 1 ½" Gated Wyes. 20ea. 1 ½" to 1" Reducers. 20ea. 1" Nozzles.						
3	<b>3,000 Foot Hose Lay:</b> Includes the following 30 lengths, 1 ½" x 100' Hose. 30 lengths, 1" x 100' Hose. 30ea. 1 ½" Gated Wyes. 30ea. 1 ½" to 1" Reducers. 30ea. 1" Nozzles.						
ITEM#	REQUESTED ITEM	NFES#	AMOUNT	ITEM#	REQUESTED ITEM	NFES#	AMOUNT
4	Backpack Pump, 5 gallon	1149		26	Batteries, "AA", (package)	0030	
5	Foam, 5 gallon	1145		27	Gasoline, Unleaded (gallon)		
6	Hose, ¾ inch, 50 ft. length	1016		28	Oil, 2 Cycle Mix (quart)	0341	
7	Hose, 1 inch, 100 ft. length	0966		29	Diesel, straight (gallon)		
8	Hose, 1 ½ inch, 100 ft. length	0967		30	Oil, Bar & Chain (gallon)	1880	
9	Increaser, ¾" to 1"	2235		31	Fusees (box)	0105	
10	Increaser, 1" to 1 ½"	0416		32	Torch, Drip Torch ea.	0241	
11	Nozzle, Garden ¾ inch	0136		33	Mix, Drip Torch 3-1, 5 gal.		
12	Nozzle, Forester, 1"	0024		34	Flagging, Ribbon, Color/Roll		
13	Nozzle, KK Type, 1"	1081		35	Washcloth, Waterless	0206	
14	Nozzle, KK Type, 1 ½"	1082		36	Water, Cubi, 5 gallon ea.	0048	
15	Reducer, 1" to ¾"	0733		37	Water, Bottled, (case)		
16	Reducer, 1 ½" to 1"	0009		38	Sports Drink, Gatorade (case)		
17	Tee, Hoseline, 1"x1"x ¾"	1809		39	Food, MRE's (12 per Box)	1842	
18	Tee, Hoseline, 1"x1"x 1"	2240		40	Pump Kit, High Pressure	0870	
19	Tee, Hoseline, 1 ½" x 1 ½" x 1"	0230		41	Pump, High Pressure	0148	
20	Wye, Gated, ¾" inch	0904		42	Pump Kit, Light Weight	0670	
21	Wye, Gated, 1"	0259		43	Sprinkler Kit	1048	
22	Wye, Gated, 1 ½"	0231		44	Pump Kit, Volume	6041	
23	Tank, Collapsible. Capacity Gallons?			45	Mop-Up Kit	0772	
24	Tank, Folding/Frame. Capacity ??						
25	Wrap, Structure (roll)	0881					

Date and Time Needed: \_\_\_\_\_ Point of Contact at Delivery Location: \_\_\_\_\_

**OTHER / NOTES:**

## LINE ORDER FORM

<u>ORDER #</u>	<u>DATE &amp; TIME ORDERED</u> Received from the Line	<u>WHO PLACED ORDER</u> DIVS, OPS, etc...	<u>DELIVER to (DIV, Helispot, DP, etc.)</u> Division, Heli-Spot, Drop Point, etc.	<u>MODE of DELIVERY</u> Drive, Heli, pick-up

**Order Received in Communications By:**

**TIME:**

**Communications Relayed/Placed the Order To:**

**TIME:**

**Order Shipped to the Line By (Name):**

**TIME:**

<u>ITEM#</u>	<u>DESCRIPTION</u>	<u>AMOUNT</u>
1	<b>1,000 Foot Hose Lay:</b> Includes the following 10 lengths, 1 1/2" x 100' Hose. 10 lengths, 1" x 100' Hose. 10ea. 1 1/2" Gated Wyes. 10ea. 1 1/2" to 1" Reducers. 10ea. 1" Nozzles.	
2	<b>2,000 Foot Hose Lay:</b> Includes the following 20 lengths, 1 1/2" x 100' Hose. 20 lengths, 1" x 100' Hose. 20ea. 1 1/2" Gated Wyes. 20ea. 1 1/2" to 1" Reducers. 20ea. 1" Nozzles.	
3	<b>3,000 Foot Hose Lay:</b> Includes the following 30 lengths, 1 1/2" x 100' Hose. 30 lengths, 1" x 100' Hose. 30ea. 1 1/2" Gated Wyes. 30ea. 1 1/2" to 1" Reducers. 30ea. 1" Nozzles.	

<u>ITEM#</u>	<u>REQUESTED ITEM</u>	<u>NFES#</u>	<u>AMOUNT</u>	<u>ITEM#</u>	<u>REQUESTED ITEM</u>	<u>NFES#</u>	<u>AMOUNT</u>
4	Backpack Pump, 5 gallon	1149		26	Batteries, "AA", (package)	0030	
5	Foam, 5 gallon	1145		27	Gasoline, Unleaded (gallon)		
6	Hose, 3/4 inch, 50 ft. length	1016		28	Oil, 2 Cycle Mix (quart)	0341	
7	Hose, 1 inch, 100 ft. length	0966		29	Diesel, straight (gallon)		
8	Hose, 1 1/2 inch, 100 ft. length	0967		30	Oil, Bar & Chain (gallon)	1880	
9	Increaser, 3/4" to 1"	2235		31	Fusees (box)	0105	
10	Increaser, 1" to 1 1/2"	0416		32	Torch, Drip Torch ea.	0241	
11	Nozzle, Garden 3/4 inch	0136		33	Mix, Drip Torch 3-1, 5 gal.		
12	Nozzle, Forester, 1"	0024		34	Flagging, Ribbon, Color/Roll		
13	Nozzle, KK Type, 1"	1081		35	Washcloth, Waterless	0206	
14	Nozzle, KK Type, 1 1/2"	1082		36	Water, Cubi, 5 gallon ea.	0048	
15	Reducer, 1" to 3/4"	0733		37	Water, Bottled, (case)		
16	Reducer, 1 1/2" to 1"	0009		38	Sports Drink, Gatorade (case)		
17	Tee, Hoseline, 1"x1"x 3/4"	1809		39	Food, MRE's (12 per Box)	1842	
18	Tee, Hoseline, 1"x1"x 1"	2240		40	Pump Kit, High Pressure	0870	
19	Tee, Hoseline, 1 1/2" x 1 1/2" x 1"	0230		41	Pump, High Pressure	0148	
20	Wye, Gated, 3/4" inch	0904		42	Pump Kit, Light Weight	0670	
21	Wye, Gated, 1"	0259		43	Sprinkler Kit	1048	
22	Wye, Gated, 1 1/2"	0231		44	Pump Kit, Volume	6041	
23	Tank, Collapsible. Capacity Gallons?			45	Mop-Up Kit	0772	
24	Tank, Folding/Frame. Capacity ??						
25	Wrap, Structure (roll)	0881					

Date and Time Needed: \_\_\_\_\_ Point of Contact at Delivery Location: \_\_\_\_\_

**OTHER / NOTES:**





<b>MEDICAL PLAN</b>	1. INCIDENT NAME: Creek Fire	2. DATE PREPARED: October,06, 2020	3. TIME PREPARED: 1600	4. OPERATIONAL PERIOD 10/07/20-10/08/20 0700-0700		
<b>5. INCIDENT MEDICAL AID STATIONS</b>						
MEDICAL AID STATIONS	LOCATION			ALS		
				YES NO		
Frontline Medical	China Peak Base Camp			XX		
EMPF Schwegler	Vermillion Spike			XX		
<b>6. TRANSPORTATION</b>						
A. Ambulance Services						
NAME	LOCATION	PHONE	ALS			
			YES	NO		
American Ambulance Medic 175	DP-20 days/ DP-31 Nights	Command	XX			
American Ambulance Medic 142	DP-33	Command	XX			
<b>B. AIR AMBULANCE</b>						
NAME	LOCATION		ALS	BLS		
			YES	NO		
Kern Co. 407 (Hoist)	TBD		XX			
CHP - 40 (Hoist)	TBD		XX			
<b>7. HOSPITALS</b>						
NAME	ADDRESS	TRAVEL TIME AIR GRND	PHONE	TRAUMA	HELIPAD	BURN CENTER
				Yes No	Yes No	Yes No
Clovis Community Medical Center	2755 Herndon Ave Clovis, CA 93611 36°50.32'N, 119°39.48'W	15 Min 45 Min	(559) 324-4040		XX	XX
Fresno Community Regional Medical Center	2823 Fresno St Fresno, CA 93721. 36°44.58' N, 119°47.10' W	20 Min 60 Min	(559) 459-7430	L-1	XX	XX
St. Agnes Medical Center	1303 E Herndon Ave. Fresno, Ca. 93720 36°50.15'N, 119°45.90'W	17 Min 50 Min	(559) 450-3000	L-3	XX	XX
Kaiser Fresno.	7300 N. Fresno St. Fresno, Ca 93720	N/A 50 Min	(559) 448-5568		XX	XX
<b>8. MEDICAL EMERGENCY PROCEDURES</b>						
<b>LINE "MEDICAL-EMERGENCY" PLAN:</b>  - Crew Supervisor to contact Division Supervisor/Operations with: <ul style="list-style-type: none"> <li>Patient Complaint, Condition and Location via Tactical or Command frequency. Priority 1/Red- life threatening emergency trigger Incident within Incident (IWI).</li> </ul> - Division Supervisor/Operation contacts South Communications: <ul style="list-style-type: none"> <li>Division Supervisor or POC* will run "Medical -Emergency" on the Command frequency.</li> <li>Division Supervisor of POC* to use "Medical Incident Report" worksheet on page 118-119 of the IRPG.</li> </ul> <p style="margin-left: 20px;">POC* (Point of Contact) and/or Operations</p>				<b>LINE "NON-EMERGENCY INCIDENT" PLAN:</b>  - Crew Supervisor to contact Division Supervisor with: <ul style="list-style-type: none"> <li>Patient Complaint, Condition and Location via Tactical or Command frequency. Priority 2/Yellow and Priority 3/Green Patients <u>do not</u> trigger Incident within Incident (IWI).</li> </ul> - Division Supervisor contacts Communications: <ul style="list-style-type: none"> <li>Division Supervisor or POC* will run "Non-Emergency Incident" on the Command frequency.</li> <li>Division Supervisor or POC* will use "Medical Incident Report" worksheet on page 118 -119 of the IRPG.</li> </ul>		
<b>EMERGENCY DURING OPS. BRIEF 0700-0730:</b>  <ul style="list-style-type: none"> <li>If you have an emergency while briefing is going on over the command channel. Contact South Creek communications on SNF T5- Ch. 6</li> </ul>				<b>IN-CAMP - 24 HOUR MEDICAL</b>  <ul style="list-style-type: none"> <li>Contact South Creek Communications <b>(916) 591-9026</b></li> </ul>		
9. PREPARED BY MEDL - Jeff Carlson <i>Jeff Carlson</i>				10. REVIEWED BY SOF1- Brian Savage <i>Brian Savage</i>		

**Medical Incident Report**

**FOR A NON-EMERGENCY INCIDENT: WORK THROUGH CHAIN OF COMMAND TO REPORT AND TRANSPORT INJURED PERSONNEL AS NECESSARY.**

**FOR A MEDICAL EMERGENCY: IDENTIFY ON SCENE INCIDENT COMMANDER BY NAME AND POSITION AND ANNOUNCE "MEDICAL EMERGENCY" TO INITIATE RESPONSE FROM COMMUNICATIONS**

**Use the following items to communicate situation to communications/dispatch.**

**1. CONTACT COMMUNICATIONS / DISPATCH** (Verify correct frequency prior to starting report)  
 Ex: "Communications, Div. Alpha. Stand-by for Emergency Traffic."

**2. INCIDENT STATUS:** *Provide incident summary (including number of patients) and command structure.*  
 Ex: "Communications, I have a Red priority patient, unconscious, struck by a falling tree.  
 Requesting air ambulance to Forest Road 1 at (Lat./Long.)  
 "This will be the Trout Meadow Medical Incident, IC is TFLD Jones. EMT Smith is providing medical care."

Severity of Emergency  AND  Transport Priority (priority 1, 2, 3)	<input type="checkbox"/> <b>RED / PRIORITY 1</b> Life or limb threatening Injury or illness. Evacuation need is <b>IMMEDIATE</b> Ex: Unconscious, difficulty breathing, bleeding severely, 2° - 3° burns more than 4 palm sizes, heat stroke, disoriented.  <input type="checkbox"/> <b>YELLOW / PRIORITY 2</b> Serious Injury or illness. Evacuation may be <b>DELAYED</b> if necessary. Ex: Significant trauma, unable to walk, 2° - 3° burns not more than 1-3 palm sizes.  <input type="checkbox"/> <b>GREEN / PRIORITY 3</b> Minor Injury or illness. <b>Non-Emergency transport</b> Ex: Sprains, strains, minor heat-related illness.
Nature of Injury or Illness & Mechanism of Injury	Brief Summary of Injury or Illness (Ex: Unconscious, Struck by Falling Tree)
Transport Request	Air Ambulance / Short Haul/Hoist Ground Ambulance / Other
Patient Location	Descriptive Location & Lat. / Long. (WGS84)
Incident Name	Geographic Name + "Medical" (Ex: Trout Meadow Medical)
On-Scene Incident Commander	Name of on-scene IC of Incident within an Incident (Ex: TFLD Jones)
Crew Patient Care	Name of Care Provider (Ex: EMT Smith)

**3. INITIAL PATIENT ASSESSMENT:** Complete this section for each patient as applicable (start with the most severe patient)

Agency Affiliation: (NO PATIENT NAMES)      Federal      Contractor      Local Government

Patient Assessment:      Age:      Weight:      Chief Complaint:

(If pertinent to Injury)      Skin Signs: (color/moisture/temp)      Level of Consciousness:      BP:      HR:      Respirations:

Treatment:

**4. TRANSPORT PLAN:**

Evacuation Location (drop point, intersection, helispot, Lat. / Long, hazards)      Patient's ETA to Location:

**5. ADDITIONAL RESOURCES / EQUIPMENT NEEDS:**

Paramedic / EMT - Crews - Immobilization Devices - AED - Oxygen - Trauma Bag - IV/Fluid(s) - Splints - Rope rescue - Wheeled litter - HAZMAT - Extrication

**6. COMMUNICATIONS: Identify State Air/Ground EMS Frequencies and Hospital Contacts as applicable**

Function	Channel Name/Number	Receive (RX)	Tone/NAC *	Transmit (TX)	Tone/NAC *
COMMAND					
AIR-TO-GRND					

**7. CONTINGENCY: Considerations:** If primary options fail, what actions can be implemented in conjunction with primary evacuation method?  
 Be thinking ahead.

**8. ADDITIONAL INFORMATION:** Updates/Changes, etc.

**REMEMBER:** Confirm ETA's of resources ordered. Act according to your level of training. Be Alert - Keep Calm - Think Clearly - Act Decisively

\*\*\* Follow up with MEDL upon return to ICP \*\*\*