

INCIDENT ACTION PLAN CREEK INCIDENT

CA-SNF-001391
P5NJ3F(0515)

Thursday



SOUTH ZONE



OPERATIONAL PERIOD

10/08/2020 0700

to

10/09/2020 0700

0700 OPS BRIEF



Briefing on CDF TAC 24
Public Information (844) 668-3473

1700 PLANS MEETING



IAP -SOUTH ZONE



MAPS SOUTH ZONE



INCIDENT OBJECTIVES (ICS 202)

1. Incident Name: <p style="text-align: center;">CREEK</p>	2. Operational Period:	Date From: 10/08/2020 Time From: 0700	Date To: 10/9/2020 Time To: 0700
--	-------------------------------	--	-------------------------------------

3. Objective(s):

Management Objectives

- Ensure that strategies and tactics provide for firefighter and public safety through the application of sound risk management principles.
- Minimize the threat to private property, communities, businesses, and critical infrastructure.
- Establish and strengthen cooperators, partners, and stakeholder relationships.
- Minimize the threat of exposure to COVID-19 within the incident and surrounding communities by adhering to the CDC COVID-19 Guidelines.
- Minimize the cost of the incident by employing tactics that have the highest probability of success while minimizing firefighter exposure.

Control Objectives

- Keep the fire north of Pine Flat Lake
- Keep the fire south of the South Fork of Merced River and the Minarets Range
- Keep the fire east of Highway 41
- Keep the fire west of the Mono and Silver Divide Range

General Situational Awareness:

- Utilize IRPG checklists to manage risk.
- Ensure Lookouts are established, Escape Routes and Safety Zones are clearly identified.
- Ensure effective communications are occurring by giving clear instructions and asking clarifying questions.
- Continue to adhere to COVID 19 preventative measures.
- Potential for increased fire behavior when the air clears.

5. Site Safety Plan Required? Yes No

Approved Site Safety Plan(s) Located at:

6. Incident Action Plan

- | | | | |
|---|--|--|--|
| <input checked="" type="checkbox"/> ICS 203 | <input checked="" type="checkbox"/> ICS 215A | <input type="checkbox"/> ICS 205 A | <input type="checkbox"/> |
| <input checked="" type="checkbox"/> ICS 204 | <input checked="" type="checkbox"/> ICS 220 | <input checked="" type="checkbox"/> Training Message | <input type="checkbox"/> |
| <input checked="" type="checkbox"/> ICS 205 | <input checked="" type="checkbox"/> Facility Maps | <input checked="" type="checkbox"/> Travel Map | <input type="checkbox"/> |
| <input checked="" type="checkbox"/> ICS 206 | <input checked="" type="checkbox"/> Weather Forecast | <input checked="" type="checkbox"/> Demob Plan | <input type="checkbox"/> County Health Message |
| <input checked="" type="checkbox"/> ICS 208 | <input checked="" type="checkbox"/> Fire Behavior | <input checked="" type="checkbox"/> Finance Message | <input checked="" type="checkbox"/> ICS 214 |

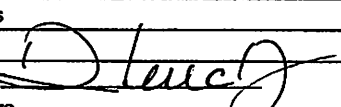
7. Prepared By: Rick Leuck Position/Title: PSC1

Signature:

8. Approved by Incident Commander South: Rick Young

Signature:

ORGANIZATION ASSIGNMENT LIST (ICS 203)

1. Incident Name: CREEK		2. Operational Period: Date From: 10/08/2020 Date To: 10/9/2020	
		Time From: 0700 Time To: 0700	
3. Incident Commander(s) and Command Staff:		7. Operation Section:	
IC/UC's	R. Young, J. McDougald, K. Curtice, D. Mueller (T)	Operations	A. McBeth
Deputy	C. Joseph	Deputy Operations	
Safety Officer	B. Savage, D. Welch	Night Ops	S. Prather
Information Officer	M. Savage, S. Kliest, E. MacEwen, C. Quintanilla (T)	Planning / Ops	D. Fregulia, C. Stevens, J. Goss (T)
Liaison Officer	R. Alpert, F. Flores, D. Cooper	Zone	South
Human Resource	A. Cabida	Branch	XX
4. Agency/Organization Representatives:			E. Villa (12), Prentiss (T)
CALFIRE AA	M. Johnson	Division/Group	M I. Naylor (12), R. Mitchinson (T)(12)
CALFire Line Officer	C. Bump	Division/Group	N J. Marquez (12), H. Kennedy (T)
CAL OES	D. Franklin	Division/Group	P J. Hidalgo (12), E. Dehart (T)(12)
CHP	C. Kunzler	Division/Group	R M. Velazquez (12)
Fresno County OES	K. Austin	Division/Group	Night N/P/R J. Knox (12)
American Red Cross	K. Poitras	Branch	STRUCTURE C. Rose (12)
USFS	K. Sorini	Division/Group	XXV/XXIX M. Bontrager
CNG Army	D. Hall	Division/Group	S/U/V J. Skrobecky
PG&E	C. Jordan	Division/Group	W/X/Z C. Jaugui
Southern CA	S. Brown	Division/Group	Suppression C. Wade (12), C. Borello (12)
Cal Trans	G. Pamplin	Branch	
CDCR	L. VonSavoye	Division/Group	
CCC	M. Diaz	Division/Group	
Tribal Liaison	D. Charley	Division/Group	
		Division/Group	
		Branch	
		Division/Group	
5. Planning Section:		Division/Group	
Chief	R. Leuck, J. Schillinger, R. Ashby (T)	Division/Group	
Resource Unit	T. Costello, R. Roque, H. Klemenson (T), M. Weisenberg (T)	Division/Group	
Situation Unit	T. Morelock, R. Wakefield, F. Baker	Branch	
GISS	D. Hutchinson, S. Powell	Division/Group	
IMET	J. Pendergast	Division/Group	
FBAN	J. Shelton	Division/Group	
SOPL		Division/Group	
DMOB	M. Kadota, R. Villa (T)	Branch	
Documentation Unit	J. Ostling	Division/Group	
Training Specialist	B. Rivelle (V)	Division/Group	
ITSS	J. Youngblood, R. Martinez, A. Rose	Division/Group	
SCKN	A. Saltzman	Air Operations Branch	
READ	D. Quintana	Director:	J. Keesee
		Air Support Group Supervisor	R. Ucha
		Air Tactical Group Supervisor	
6. Logistics Section			Helibase Manager
Chief	K. Kumpe, B. Shurr, R. Crowther (T), R. Cruz (T)		Helitorch Manager
Supply Unit	M. Bradford	8. Finance/Administration Section:	
Facilities Unit	D. Nugent (T), D. Norvel (T)	Chief	T. Fork
Ground Support Unit	Z. Wilcox (T)	Time Unit	J. Brown
Communications Unit	K. Earle, A. De La Torre (T)	Equipment Time	M. Prochazka
Medical Unit	J. Carlton, N. Ong (T)	Comp/Claims Unit	E. Downing
INCM	R. Flaim, D. Justin-Silveria	Cost Unit	R. Siemers
Food Unit	L. Maybe, C. Danhieser (T)		
Prepared By: Name:	Rick Leuck	Position/Title:	PSC1
ICS 203		Date/Time:	10/7/2020 2300 hours
		Signature:	



Creek South Zone Fire Weather Forecast



FORECAST NO: 31

NAME OF FIRE: Creek Fire

PREDICTION FOR: 0700 Thu – 0700 Fri

UNIT: CA-SNF-001391

SHIFT DATE: 10/08 - 10/09

SIGNED: *John Pendergrast*

Incident Meteorologist - John Pendergrast

TIME/DATE FORECAST ISSUED: 1900 10/07/20

IMET PHONE: 240-499-6649

WEATHER DISCUSSION: . Seasonally mild temperatures will remain present through the end of the week. A weakening upper trough will wash out over the area today, to be followed by the approach of another Pacific trough on Saturday. Clouds and increased humidity will accompany the system, however measurable rainfall is not expected. Smoke will remain present overnights and into the mornings, with general air quality improvement during the afternoons as local winds develop. Critical fire weather conditions are not expected through Saturday.

WEATHER FORECAST FOR THURSDAY: Mixed haze/smoke with high clouds. Temperature down slightly.

TEMPERATURES: Max 2500-5000' 76-81° ...above 5000' 66-73° **24 HR Trend:** Down 2-4° .

HUMIDITY: Min 2500-5000' 12-18% ...above 5000' 17-22% **24 HR Trend:** 2-4% higher.

20-FOOT WIND: .East-northeast 4-6 mph to mid morning, then southwest 5-10 mph; gusts 12-15 mph.

SLOPE/VALLEY - Downslope/downcanyon 2-4 mph early, then upslope/upcanyon 6-9 mph; gusts 14 mph.

STABILITY/INVERSION: Smoke thins 1400-1700 but not fully. Inversion/trapped smoke lifts to ~6500 ft.

WEATHER FOR THURSDAY NIGHT: Light winds after dusk developing downslope late. Limited RH recovery mid-to-upper slopes (thermal belts/ridges). Smoke dense/with higher humidity in low spots.

MINIMUM TEMPERATURES:

2500-5000' 59-65° ...Above 5000' 50-57° except drainage spots 37-46°. **24 HR Trend:** Up 1-3°

MAXIMUM HUMIDITY:

2500-5000' 40-50% ...Above 5000' 25-32%; (drainage spots up to 60 %). **24 HR Trend:** Up 2-3%.

20-FOOT WIND: **RIDGETOP** - Variable early, then east-southeast 3-6 mph with gusts to 9 mph.

SLOPE/VALLEY - Downslope/downcanyon 2-5 mph; gusts as much as 10 mph in east-to-west aligned drainages (Huntington Lake; South Fork San Joaquin).

EXTENDED FORECAST:

FRIDAY...Cooler with some higher clouds and morning haze. Max temps 62-70° (lower). Min RH 22-32% (Up 4 to 7%). Winds down canyon 2-5 mph early; then upslope to West 7-12 mph; gusts (especially ridges) 16 mph. Inversion around 5500 feet.

SCAN FOR REALTIME OBS

Key RAWS Locations

Shaver RAWS 5600'

Div S

Mt Rest RAWS 4100'

Div W


IRAWS 50 – River bottom 2195' Div A

High Sierra RAWS 7431' Div N

SCE Kaiser Ridge 8250' Div R



FIRE BEHAVIOR FORECAST

FORECAST NUMBER: 009	TYPE OF FIRE: Wildfire
FIRE NAME: Creek Fire South Zone	OPERATIONAL PERIOD: 10/08/20 0700-0700
DATE ISSUED: October 7, 2020	TIME ISSUED: 19:00
UNIT: CA-SNF-001391	SIGNED: 
	Typed/printed: Jeff Shelton (LTAN)

INPUTS

WEATHER SUMMARY: *** *Relatively Cooler, Dry and Smokey* ***
Weak regional low-pressure system from the southwest will transition out of the fire area bringing high clouds, light winds and slightly better RH recovery. Weak to locally moderate terrain winds will again provide the steering mechanism for any column that does develop above the still present inversion (6500'). Overnight RH recoveries leading into the burn period will be fair, but trending to good over the next few days.

Max. Temperature: 73-81 degrees **Min. Humidity:** 12-17% **Winds(Day):** Terrain Driven/ SW to 10 Gusts 15
Min. Temperature: 37-59 degrees **Max. Humidity:** 32-50% **Winds(Night):** Downslope/ East to 9 Up High

OUTPUTS

FIRE BEHAVIOR

GENERAL:

- Topography is creating locally higher winds... ***This Fire is Especially Sensitive to Wind!***
- This fire remains fuels driven... ***But Ventilation Dependent... Read Your Smoke Often!***
- Respect any tree torching- ***Increased Surface Activity Will Precede Fire Laddering Up!***
- Expect light fuels to become more unavailable with RH recovery... ***Firing Will Be Affected!***
- Unshaded PIG remains at 90%... Smoke Shaded 60%... ***Expect a Back and Forth Dance!***
- Less daylight + stagnant smoke + higher RH... ***Burn Periods are Slowly Shortening!***
- Firing opportunities are now changing... ***Plan on Shorter Burn Windows... And More Fuel!***
- Reliably at 1400... ***Winds and Fire Behavior Increase... Upslope to Up Drainage!***

SPECIFIC:

All Divisions: Lower Slopes- Well Established, *Moderate Intensity*, Fuels Driven, Surface Fire...
Isolated Torching, and Short Runs in Steep, Aligned Topography...
Upper Slopes- Ventilation Enhanced, *Mod.-High Intensity*, Fuels Driven Surface Fire
Group Torching, Short Runs, Short Range Spotting...

Flame Lengths- Up to 2 ft. in Litter, 6 ft. in Grass, and 30 ft. in Brush... Slowing Overnight.

Rate of Spread- Up to 20 chains/hour in Grass, Up to 30 chains/hour in Brush... Slowing Overnight.

Spotting Distances- Less than .1 miles in Grass/Brush, Up to .25 miles in Timber (From Torching)

Probability of Ignition- 60% Shaded, 90% Unshaded; Down to around 30% overnight

AIR OPERATIONS:

Sunrise: 0659 Sunset: 1833

Expect fair to poor smoke dispersion with minimal clearing from light diurnal transport winds and mid-level cloud cover. Mixing heights will raise to 6500' by 1400. Anticipate greatly reduced visibility in the sheltered valleys early. Above the inversion, anticipate mildly enhanced visibility. Without strong upper level winds, smoke above the inversion will quickly obscure visibility as daytime heating peaks.

SAFETY

***Air Goes Where Water Flows!
Know Your Topography.... and You Will Know Your Wind!
Know Your Wind.... and You'll Know Your Fire Behavior!***

Fuels and Fire Behavior Advisory

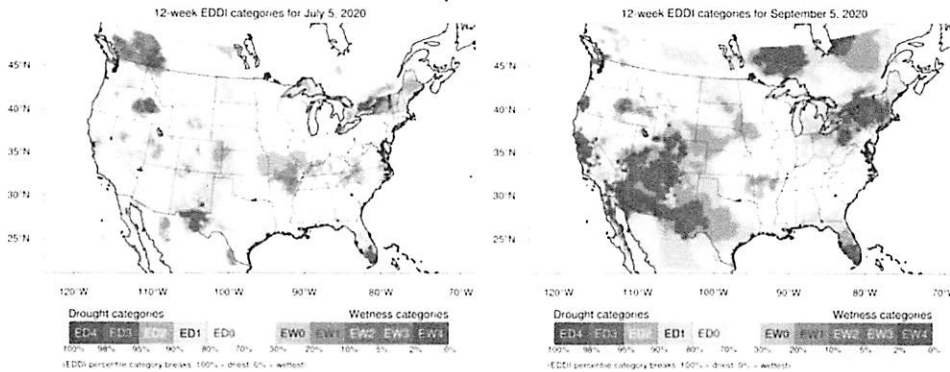
Southern California Geographic Area

September 11, 2020

Subject: Live and dead fuels are extremely dry across the mountain predictive service areas (PSAs). Extreme fire behavior and rapid rates of spread are occurring in these areas, even when winds are light. The chance for extreme fire behavior will increase over the next couple of months as winds increase and become more prevalent. Fire behavior will remain elevated across the mountains of southern and central California, until significant rainfall occurs.

Discussion: A progressive pattern brought near to slightly below normal temperatures from June through August 11th and fire activity was below normal. High pressure became strong and dominant from August 12th into September, bringing well above normal temperatures and very low humidities. Live and dead fuel moisture over the mountains are much lower than normal, due to the absence of monsoonal showers and thunderstorms, combined with very warm and dry conditions.

Difference from normal conditions: Rainfall was 50% to 70% of normal this year in the Sierras, while the rest of the mountainous areas in Southern California received slightly above normal rainfall. Due to hot and dry conditions and little to no rainfall this summer, the dead fuel moistures across all mountain areas are near or below the 3rd percentile and live fuel moistures are between 50% and 70%. ERC's are running near or above the 97th percentile. Computer models indicate high pressure will dominate through at least the end of October, so the potential for extreme fire behavior will increase.



The Evaporative Demand Drought Index (EDDI) is an experimental drought monitoring and early warning guidance tool. It examines how anomalous the atmospheric evaporative demand (E_0 ; also known as "the thirst of the atmosphere") is for a given location and across a time period of interest. The figures show the 12 week period preceding July 5 (left) and Sep 5 (right).

<https://psl.noaa.gov/eddi/>

Concerns to Firefighters and the Public:

- Firefighters need to be prepared for possible extreme fire behavior and dangerous rates of spread at any time of day, especially during foehn wind events.
- The potential for extreme fire activity will be likely to continue until enough precipitation occurs to significantly increase fuel moisture.
- Rapid rates of spread could have a significant impact on public safety and make evacuations difficult.

Mitigation Measures:

- All firefighters need to remain aware of current and expected weather and burning conditions.
- Employ LCES principles (Lookouts, Communications, Escape Routes, Safety Zones).
- Review current fire potential products from Predictive Services at: <https://qacc.nifc.gov/oscc/predictive/weather/index.htm>,
- Red Flag conditions from the National Weather Service and weather at: <https://www.wrh.noaa.gov/fire2/cafw/>.
- Monitor the Santa Ana Wildfire Threat index during the season at: <https://fsapps.nwcg.gov/psp/sawti>

Area of Concern: The mountains are the driest area in the region and are the main concern heading forward. The associated PSAs are SC01, SC02, SC03, SC09, SC10, and SC11.

Creek Incident-South Zone – Safety Message

INCIDENT #CA-SNF-001391

DATE: 10/8-9/2020 TIME: 0700-0700

Incident Management Team Transition

- Sometimes called the 19th Watch Out Situation.
- Take the time to understand the plan. Ensure all resources completely understand the assignment, the Communications Plan, and the Medical Plan.
- Briefings: Required every shift, for all personnel, for new assignments, and for changing conditions.
- Confirm that the leader's intent has not changed. If it has, make sure it is communicated.

Hazard Trees

- All trees need to be considered hazardous until they are evaluated.
- Even large healthy-looking trees can be dangerous due to forest health issues.
- Use the look up, down, and all-around process when working around or under trees.
- Minimize the number of personnel exposed, and the exposure time.
- Avoid unnecessary exposure around suspect trees during windy periods.
- Mitigate or close areas around hazardous trees in work areas.

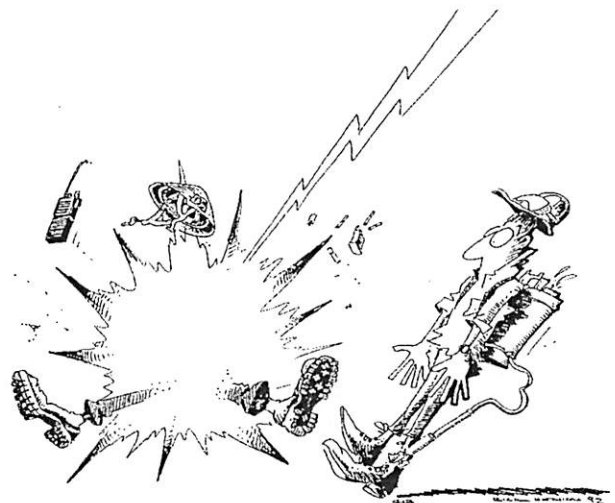
Driving

- When driving keep the speed at or below the posted speed limit and turn your headlights on. Is the posted speed limit a safe speed under the current conditions and traffic?
- **Use caution on unimproved roads as some have soft shoulders. Some roads are also only one lane with pullouts!**
- Road surfaces are variable with washboard conditions and thick gravel that can compromise turning and braking.
- Watch for and anticipate stock and wildlife.
- Always fasten your seat belt before the vehicle is set into motion. Use backseat.
- Do not tail gate, especially in dusty conditions.
- Slow down, slow down, and slow down!

Safety Officers: B .Savage (SOF1)

D. Welch (SOF1)

Brief personnel on expected and local weather trends!



4. UNFAMILIAR WITH WEATHER AND LOCAL FACTORS INFLUENCING FIRE BEHAVIOR




INCIDENT RISK ANALYSIS

CA-SNF-001391

(ICS 215a) Day/Night Shift

DIV/BR	HAZARDOUS ACTIONS / CONDITIONS	MITIGATIONS / WARNINGS / REMEDIES
ALL	TRAFFIC HAZARDS AND DRIVING	<ul style="list-style-type: none"> Practice "Defensive Driving" techniques. Traffic volume is high in the area. Use spotters when backing. Always use headlights. Use warning lights when working on roads or traveling in smoke. Observe posted speed limits. Use chock blocks, turn wheels into hill. Many roads are narrow and mid slope, use caution.
ALL	HAZARD / DANGER TREES	<ul style="list-style-type: none"> Follow Hazard Tree Safety Guidelines (IRPG p.22). Limit number of personnel around snags and their exposure time; fallers must be qualified for the trees being felled. Be especially alert around snags during wind events. Large green trees can also be dangerous.
Branch 20	FIRE BEHAVIOR	<ul style="list-style-type: none"> Conduct thorough assessments before starting work. Ensure LCES is in place. Provide additional briefing on drought related fire behavior and areas of high concentration of hazard trees. Increase the level of SA. Provide additional briefing for new resources and maintain communications.
ALL	WEATHER	<ul style="list-style-type: none"> Be aware of changing weather conditions. Watch out for increasing winds and instability. Anticipate increased fire behavior conditions. Communicate any observed changes in weather and fire behavior. "Base all actions on current and expected behavior of the fire."
ALL	FATIGUE	<ul style="list-style-type: none"> Be alert for signs of fatigue and take breaks as necessary. Maintain 2:1 work/rest ratio. Monitor ALL resources for level of fatigue. Recognize the symptoms of fatigue and take action as necessary to provide rest and recovery. Repeated assignments in the same area can lead to complacency making personnel more vulnerable to accidents. Take steps (switching of assignments, training opportunities during slow periods, etc.) to maintain situational awareness for the duration of the incident.
ALL	COMMUNICATIONS	<ul style="list-style-type: none"> Share your Situational Awareness (hazards, changes, etc.) to those who also have a need. Radio Communications may be poor in some areas: use human repeaters as needed. Ensure all personnel are familiar with the incident and IA communications plans. Make sure all resources have radios cloned appropriately. Ensure that non-agency resources understand radio use and procedures.
ALL	STEEP TERRAIN AND ROLLING DEBRIS	<ul style="list-style-type: none"> Maintain 8'-10' spacing when working & walking. Use caution and communicate when working above any personnel. Evaluate necessity to send personnel in areas with limited access.
Branch 20	LINE CONSTRUCTION	<ul style="list-style-type: none"> Follow the line construction protocols and safety precautions for direct and indirect line construction. Watch footing and spacing between firefighters, especially those working below. Make sure LCES is in place. Follow the "Downhill Line Construction Checklist" on IRPG page 9.
ALL	ENVIRONMENTAL HAZARDS	<ul style="list-style-type: none"> Keep alert for wildlife, deer, rattlesnakes, bees, coyotes and BEARS. Watch footing and hand placement around rocks. Use caution around gas and power lines. There are numerous power lines down within the fire area. Treat all lines as live!! Every line has the potential to be energized through back-feed by civilian generators or solar power systems in the area. Follow all CDC and Agency COVID 19 protocols.
ALL	HEAVY EQUIPMENT OPERATIONS	<ul style="list-style-type: none"> Ensure communications are established with operators. Ensure ground personnel have safety illumination, with light-sticks being the minimum. Maintain a 50'-100' exclusion area around equipment. In timber increase safety distance to 2 ½ times canopy height.
ALL	MOP UP	<ul style="list-style-type: none"> Evaluate areas for hazard trees and locate stump holes for avoidance. Monitor fatigue; shorten shifts to increase rest where appropriate. Provide motivation to workers to maintain situational awareness. Carefully evaluate proposed mop up distances and evaluate hazards. Only mop up to the degree necessary to accomplish the desired end state when safe to do so. Review and follow "Look Up, Look Down, Look Around" procedures (IRPG p.3-4).

<p>INCIDENT NAME:</p> <p>Creek Fire South Zone</p>	<p>Operational Period: 0700-0700</p> <p>October 8-9, 2020</p> <p>DATE AND TIME PREPARED: October 7, 2020 1700 hours</p>	
---	---	---

ASSIGNMENT LIST (ICS 204 WF)

CONTROLLED UNCLASSIFIED
INFORMATION//BASIC

1. Incident Name: <p style="text-align: center;">CREEK</p>	2. Operational Period: Date From: 10/08/2020 Date To: 10/09/20 Time From: 0700 Time To: 0700	3. Branch Division <p style="text-align: center;">XX M</p> <p style="text-align: center;">Page 1 of 1 Mike</p>
---	---	---

4. Operations Personnel:	
Operations Section Chief: A. McBath Branch Director: E. Villa (12), Prentiss (T) Division/Group Supervisor: I. Naylor (12), R. Mitchinson (T)(12)	Night Ops: S. Prather Branch Safety: D. Welch, C. Rossman (T), M Smith, R Hickok Air Attack:

5. Resources Assigned:		** Resources Below in Bold are 12 Hour **					
Resource Identifier	ALS	LWD	Leader	Personnel	Request #	Hours	Reporting Location
CRW IHC LOS PADRES		10/16	M. Aoki	19	C-400008	0700-1900	China Peak Ski Area
CRW IHC MT TAYLOR		10/16	C. Brashers	20	C-400011	0700-1900	China Peak Ski Area
CRW IHC VALYERMO		10/21	M. Armstead	19	C-400036	0700-1900	China Peak Ski Area
CRW IHC GROVELAND		10/8	S Meeks	19	C-200080	0700-1900	China Peak Ski Area
ENG3 SNF 341		10/7	C. Cabanas	6	E-400010	0700-1900	China Peak Ski Area
ENG3 STF 313		10/13	C Daniels	5	E-400158	0700-1900	China Peak Ski Area
ENG3 STF 314		10/13	D. Guse	5	E-400159	0700-1900	China Peak Ski Area
ENG3 STF 346		10/15	M. Scheu	4	E-400160	0700-1900	China Peak Ski Area
ENG3 STF 345		10/12	P. Green	5	E-400161	0700-1900	China Peak Ski Area
ENG6 CIMMARON HILLS-6		10/19		3	E-200636	0700-1900	China Peak Ski Area
ENG6 NM-517		10/15	S. Brady	3	E-200092	0700-1900	China Peak Ski Area
ENG6 CIF 671		10/8	J. Gutierrez	4	E-400015	0700-1900	China Peak Ski Area
ENG6 LOOMIS		10/15	P. Huddleston	3	E-400089	0700-1900	China Peak Ski Area
WT PVT E-100057			J. Pehurl	2	E-100057	0700-0700	China Peak Ski Area
WT PVT E-400138		10/15	R. Torres	2	E-400138	0700-1900	China Peak Ski Area
TFLD (T) OCCHIPINTI		10/18	T. Occhipinti	1	O-400146	0700-1900	China Peak Ski Area

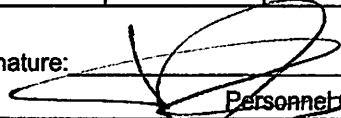
6. Work Assignments:

Scout indirect line opportunities from Edison Lake to Devils Bathtub

7. Special Instructions:

8. Communications							
Name	Ch	Function	Rx Freq	Rx Tone	Tx Freq	Tx Tone	Notes
NIFC C-5	1	COMMAND	169.7500	T5 - 146.2	167.1000	T5 - 146.2	MUSICK MTN.
CDF T28	9	TACTICAL	151.1825	T16 -192.8	151.1825	T16 -192.8	
A/G TAC	14	A/G TAC	166.6125N		166.6125N		
GUARD V3	16	AIRGUARD	168.6250N		168.6250N	T1 - 110.9	EMERGENCY ONLY
GUARD V3	20	AIRGUARD	168.6250N		168.6250N	T1 - 110.9	EMERGENCY ONLY

9. Prepared by: Name: R. Roque RESL-T

Signature: 

ICS 204 Date/Time: 10/7/2020 2200 Personnel Count: 120

ASSIGNMENT LIST (ICS 204 WF)

CONTROLLED UNCLASSIFIED
INFORMATION//BASIC

1. Incident Name: CREEK	2. Operational Period: Date From: 10/08/2020 Date To: 10/09/20 Time From: 0700 Time To: 0700	3. Branch Division XX P Page 1 of 2 Papa
--	---	---

4. Operations Personnel:	
Operations Section Chief: A. McBath	Night Ops: S. Prather
Branch Director: E. Villa (12), Prentiss (T)	Branch Safety: D. Welch, C. Rossman (T), M Smith, R Hickok
Division/Group Supervisor: J. Hidalgo (12), E. Dehart (T)(12)	Air Attack:

5. Resources Assigned:		** Resources Below in Bold are 12 Hour **					
Resource Identifier	ALS	LWD	Leader	Personnel	Request #	Hours	Reporting Location
CRW SBC CRW 11		10/21	T. Gilliam	18	C-100029	0700-1900	China Peak Ski Area
ENG3 S/T 1521C		10/16	A. Briner	22	E-400017	0700-1900	China Peak Ski Area
ENG3 INTERIOR 37		10/14	J. Tucker	3	E-400088	0700-1900	China Peak Ski Area
ENG3 BLM E3132		10/16	M Fogg	4	E-400152	0700-1900	China Peak Ski Area
ENG4 HR101		10/12	A. Beeley	3	E-400074	0700-1900	China Peak Ski Area
DOZ SNF2		10/8	J. Cornell	2	E-8	0700-1900	China Peak Ski Area
MAS PVT E-100285		10/7	G. Mcbride	1	E-100285	0700-1900	China Peak Ski Area
MAS PVT E-100495			L. Page	1	E-100495	0700-1900	China Peak Ski Area
MAS PVT E-100500		10/7	J. Burkett	1	E-100500	0700-1900	China Peak Ski Area
FALM O-400095		10/7	B. Toth	1	O-400095	0700-1900	China Peak Ski Area
WT PVT E-400136		10/17	N. Romero	2	E-400136	0700-1900	China Peak Ski Area
WT OES 52			J. Aguda	2	E-39	0700-1900	China Peak Ski Area
FALM O-272			J. Christian	2	O-272	0700-1900	China Peak Ski Area
FALM O-400162		10/21	C. Onken	2	O-400162	0700-1900	China Peak Ski Area
HEQB ROGERS		10/8	D. Rogers	1	O-100678	0700-1900	China Peak Ski Area
HEQB (T) MACPHERSON		10/12	D. Macpherson	1	O-400075	0700-1900	China Peak Ski Area
TFLD (T) SCHLAEFER		10/10	M. Schlaefer	1	O-400090	0700-1900	China Peak Ski Area
EMPF HECKMAN		10/12	M. Heckman	1	O-400076	0700-1900	China Peak Ski Area

6. Work Assignments:

Maintain tactical patrol of the structures on the north shore of Huntington Lake from Dowville to China Peak Landing to prevent any further structure loss.
Construct alternate handline from Kaiser Summit west to Potter Pass. Initiate firing as directed by DIVS to prevent fire spread to the East.
Mop up and patrol section of 05 Road from Division N / P break west towards Sample Meadows to prevent fire spread to the south.

7. Special Instructions:

NIFC C-32 or NIFC C-5 are the preferred Command Channels to use within this Division
REAFs will check in during briefing breakout sessions with DIVS if working in that division for that shift
Backhaul all trash and excess supplies & equipment
Identify sensitive archaeological and historic resource sites. Utilize MIST tactics when in Wilderness areas
Coordinate with REAFs for ground disturbing activities in pre-identified areas to protect the Yosemite Toad

Name	Ch	Function	Rx Freq	Rx Tone	Tx Freq	Tx Tone	Notes
NIFC C-5	1	COMMAND	169.7500	T5 - 146.2	167.1000	T5 - 146.2	MUSICK MTN.
CDF T25	7	TACTICAL	159.2775	T16 -192.8	159.2775	T16 -192.8	
A/G TAC	14	A/G TAC	166.6125N		166.6125N		
CALCORD	15	MEDICAL	156.0750N	T6 - 156.7	156.0750N		EMERGENCY ONLY
GUARD V3	16	AIRGUARD	168.6250N		168.6250N	T1 - 110.9	EMERGENCY ONLY

9. Prepared by: Name: R. Roque	RESL-T	Signature:
ICS 204	Date/Time: 10/7/2020 2200	Personnel Count: 68

ASSIGNMENT LIST (ICS 204 WF)

CONTROLLED UNCLASSIFIED
INFORMATION//BASIC

1. Incident Name: <p style="text-align: center; font-weight: bold;">CREEK</p>	2. Operational Period: Date From: 10/08/2020 Date To: 10/09/20 Time From: 0700 Time To: 0700	3. Branch Division <p style="text-align: center; font-size: 2em; font-weight: bold;">XX R</p>
---	---	---


4. Operations Personnel:		Page 1 of 2	Romeo
Operations Section Chief: A. McBath	Night Ops: S. Prather		
Branch Director: E. Villa (12), Prentiss (T)	Branch Safety: D. Welch, C. Rossman (T), M Smith, R Hickok		
Division/Group Supervisor: M. Velazquez (12)	Air Attack:		

5. Resources Assigned:	** Resources Below in Bold are 12 Hour **						
Resource Identifier	ALS	LWD	Leader	Personnel	Request #	Hours	Reporting Location
CRW T2IA UMF4		10/11	T. Wagner	21	C-400028	0700-1900	China Peak Ski Area
ENG3 PVT AMERICAN		10/9	J. Stanovich	3	E-400012	0700-1900	China Peak Ski Area
ENG SPA 2061		10/8	J.Sarah	3	E-400013	0700-1900	China Peak Ski Area
ENG3 303		10/13	L. Martin	3	E-400077	0700-1900	China Peak Ski Area
ENG3 AZ-ELH325		10/13	C. Anthis	3	E-400079	0700-1900	China Peak Ski Area
ENG3 AZ-E55		10/13	D. Mccarthy	4	E-400085	0700-1900	China Peak Ski Area
ENG3 BURNS 321		10/14	C. Sitz	3	E-400087	0700-1900	China Peak Ski Area
ENG6 R03 E-6		10/19	R. Norrid	3	E-400163	0700-1900	China Peak Ski Area
ENG6 AZ 1972		10/12	R. Vallejos	3	E-400075	0700-1900	China Peak Ski Area
ENG6 601		10/12	O. Flores	4	E-400076	0700-1900	China Peak Ski Area
ENG6 INTERIOR 55		10/18	C. Strand	3	E-400165	0700-1900	China Peak Ski Area
WT PVT E-100200		10/19	M. Miller	1	E-100200	0700-1900	China Peak Ski Area
WT PVT E-200441		10/16	P. Neri	1	E-200441	0700-1900	China Peak Ski Area
WT PVT E-400056		10/18	J. King	1	E-400056	0700-1900	China Peak Ski Area
WT PVT E-400057		10/18	K. Paschal	1	E-400057	0700-1900	China Peak Ski Area
WT PVT E-400058		10/13	Z. Shinkle	1	E-400058	0700-1900	China Peak Ski Area
WT PVT E-400093		10/27	J. Epperson	2	E-400093	0700-1900	China Peak Ski Area
WT PVT E-400094		10/28	B. Worsham	1	E-400094	0700-1900	China Peak Ski Area

6. Work Assignments:
Secure edge to the extent necessary to prevent any further fire spread. Emphasis will be at the Division break between Sierra and Romeo.

7. Special Instructions:
NIFC C-32 or NIFC C-46 are the preferred Command Channels to use within this Division
REAFs will check in during briefing breakout sessions with DIVS if working in that division for that shift
Backhaul all trash and excess supplies & equipment
Identify sensitive archaeological and historic resource sites. Utilize MIST tactics when in Wilderness areas
Coordinate with REAFs for ground disturbing activities in pre-identified areas to protect the Yosemite Toad

Name	Ch	Function	Rx Freq	Rx Tone	Tx Freq	Tx Tone	Notes
NIFC C-5	1	COMMAND	169.7500	T5 - 146.2	167.1000	T5 - 146.2	MUSICK MTN.
CDF T27	8	TACTICAL	159.3075	T16 -192.8	159.3075	T16 -192.8	
A/G TAC	14	A/G TAC	166.6125N		166.6125N		
CALCORD	15	MEDICAL	156.0750N		156.0750N	T6 - 156.7	EMERGENCY ONLY
GUARD V3	16	AIRGUARD	168.6250N		168.6250N	T1 - 110.9	EMERGENCY ONLY

9. Prepared by: Name: R. Roque RESL-T Signature: 

ICS 204 Date/Time: 10/7/2020 2200 Personnel Count: 61

ASSIGNMENT LIST (ICS 204 WF)

CONTROLLED UNCLASSIFIED
INFORMATION/BASIC

1. Incident Name: CREEK	2. Operational Period: Date From: 10/08/2020 Date To: 10/09/20 Time From: 0700 Time To: 0700	3. Branch Division XXV/XXIX Suppression
4. Operations Personnel:		Page 3 of 3

Operations Section Chief: A. McBath	Night Ops: S. Prather
Branch Director: M. Bontrager	Branch Safety: M. Sass (T)(12)
Division/Group Supervisor: C. Wade (12), C. Borello (12)	Air Attack:


5. Resources Assigned:		** Resources Below In Bold are 12 Hour **					
Resource Identifier	ALS	LWD	Leader	Personnel	Request #	Hours	Reporting Location
WT PVT E-400184		10/20	N. Trahan	1	E-400184	0700-1900	Sierra High School
FALM O-263			L. PAIGE	2	O-263	0700-1900	Sierra High School
FALM O-277		10/7	T. Nealy	2	O-277	0700-1900	Sierra High School
HEQB ANDERSON		10/12	G. Anderson	1	O-100217	0700-1900	Sierra High School
HEQB BRIDGER		10/16	J. Bridger	1	O-100237	0700-1900	Sierra High School
HEQB SHARP		10/24	J. Sharp	1	O-100436	0700-1900	Sierra High School
HEQB BRENIMAN			Q. Breniman	1	O-100627	0700-1900	Sierra High School
HEQB LOPEZ		10/12	J. Lopez	1	O-100762	0700-1900	Sierra High School
HEQB OPIE		10/21	N. Opie	1	O-100765	0700-1900	Sierra High School
HEQB NETZ (T)		10/7	P. Netz	1	O-100672	0700-1900	Sierra High School
HEQB HOUK (T)		10/20	M. Houk	1	OR-ORS	0700-1900	Sierra High School
THSP NEGRETE		10/8	M. Negrete	1	O-100755	0700-1900	Sierra High School
TFLD SUMMERS		10/15	C. Summers	1	O-400093	0700-1900	Sierra High School
STEQ PERKINS		10/8	J. Perkins	1	O-200218	0700-1900	Sierra High School
FOBS BROOMFIELD		10/16	R. Broomfield	1	O-100252	0700-1900	Sierra High School
FOBS MOUSSA		10/20	H. Moussa	1	O-400178	0700-1900	Sierra High School
FOBS (T) MACDONALD		10/19	M. MacDonald	1	O-400177	0700-1900	Sierra High School

6. Work Assignments:
 Shaver East: Repair roads and control lines.
 Shaver South: Repair roads and control lines.
 Road Group: Repair roads in the Stump Springs (05) area.
 Division VW break: Repair contingency lines.

7. Special Instructions:
 Coordinate with REAFs for ground disturbing activities
 REAFs will check in during briefing breakout sessions with DIVS if working in that division for that shift
 Backhaul all trash and excess supplies & equipment

8. Communications							
Name	Ch	Function	Rx Freq	Rx Tone	Tx Freq	Tx Tone	Notes
NIFC C-5	1	COMMAND	169.7500	T5 - 146.2	167.1000	T5 - 146.2	MUSICK MTN.
CDF T29	12	TACTICAL	151.3475	T16 -192.8	151.3475	T16 -192.8	
A/G TAC	14	A/G TAC	166.6125N		166.6125N		
CALCORD	15	MEDICAL	156.0750N		156.0750N	T1 - 110.9	EMERGENCY ONLY
GUARD V3	16	AIRGUARD	168.6250N		168.6250N	T1 - 110.9	EMERGENCY ONLY

9. Prepared by: Name: R. Roque	RESL-T	Signature:
ICS 204	Date/Time: 10/7/2020 2200	Personnel Count: 19

INCIDENT RADIO COMMUNICATIONS PLAN I-205			1. INCIDENT NAME		2. DATE/TIME PREPARED		3. OPERATIONAL PERIOD DATE/TIME				
CREEK SOUTH ZONE			CREEK SOUTH ZONE		10/7/2020		10/8/20 0700 TO 10/9/2020 0700				
4. BASIC RADIO CHANNEL UTILIZATION											
Ch #	Function	Channel Name	Assignment	RX Freq	N/W	RX Tone/NAC	TX Freq	N/W	TX Tone/NAC	Mode Analog (A) Digital (D) Mixed (M)	Remarks
1	COMMAND	NIFC C-5	ALL DIVS	169.7500	N	T5-146.2	167.1000	N	T5-146.2	A	MUSICK MTN (CENTER)
2	COMMAND	NIFC C-46	ALL DIVS	172.0875	N	T5-146.2	162.1750	N	T5-146.2	A	FENCE MEADOW (SOUTHEAST)
3	COMMAND	NIFC C-64	ALL DIVS	172.1000	N	T5-146.2	163.3875	N	T5-146.2	A	BLACK MTN (SOUTHWEST)
4	COMMAND	NIFC C-32	ALL DIVS	171.0875	N	T5-146.2	164.0125	N	T5-146.2	A	WHITE BARK (EAST/NORTHEAST)
5	COMMAND	NIFC C-41	ALL DIVS	173.0250	N	T5-146.2	165.3875	N	T5-146.2	A	MAMMOUTH (EAST)
6	FOREST IA	SNF T5	ALL DIVS	172.2250	N		164.7875	N	T5-146.2	A	MUSICK MTN (FOREST NET IA)
7	TACTICAL	CDF T25	DIV P	159.2775	N	T16-192.8	159.2775	N	T16-192.8	A	DIV PAPA
8	TACTICAL	CDF T27	DIV R	159.3075	N	T16-192.8	159.3075	N	T16-192.8	A	DIV ROMEO
9	TACTICAL	CDF T28	DIV M, SUJUV	151.1825	N	T16-192.8	151.1825	N	T16-192.8	A	DIVS MIKE, SIERRA/JUNIFORM/VICTOR
10	TACTICAL	VTAC-11	DIV N	151.1375	N	T6-156.7	151.1375	N	T6-156.7	A	DIVS NOVEMBER,
11	TACTICAL	VTAC-12	DIV W/X/Z	154.4525	N	T6-156.7	154.4525	N	T6-156.7	A	DIVS WHISKEY/X-RAY/ZULU
12	TACTICAL	CDF T29	SUPP REPAIR	151.3475	N	T16-192.8	151.3475	N	T16-192.8	A	SUPPRESSION REPAIR GROUP
13	A/G CMD	A/G CMD	ALL DIVS	167.0625	N		167.0625	N		A	
14	A/G TAC	A/G TAC	ALL DIVS	166.6125	N		166.6125	N		A	
15	MEDICAL	CALCORD	ALL DIVS	156.0750	N	T6-156.7	156.0750	N	T6-156.7	A	EMERGENCY ONLY (MEDEVAC)
16	AIRGUARD	AIRGUARD	ALL DIVS	168.6250	N		168.6250	N	T1-110.9	A	EMERGENCY ONLY
5. Special Instructions: Sometimes the closest repeater is not the best. If you have poor command communications, try another command repeater (Channels 1-4). They are all linked. If you must hand program go exactly off the 205, including tones. The use of receive and transmit tones removes other, nearby radio traffic from other fires.											
6. I-205 Prepared By: Communications Unit Leader Name: Ken Earle Signature: 											

AIR OPERATIONS SUMMARY ICS-220 NORTH/SOUTH ZONES

Incident Name / Number Creek CA-SNF-001391	Sunrise 7:05	Startup 7:34	Cutoff 18:01	Sunset 18:31	Time Prepared 1830	Date Prepared October 07, 2020	Prepared By J. Best
General Remarks, Safety Notes, Hazards, Air Operations Special Equipment, etc. TRACK ALL DIPSITE LOCATIONS / NUMBER OF DIPS / GALLONS TAKEN. TRACK ALL DROP LOCATIONS (DIV) / NUMBER OF DROPS / GALLONS DROPPED All GPS DATA TO BE COLLECTED IN DEGREES, MINUTES, DECIMAL MINUTES FORMAT.				Shutdown 19:01		Operational Period - Date Thursday October 8, 2020	Operational Period - Time 0700-2100
<p><i>If Retardant / Foam / Agent is Dropped Within 300' of a waterway, Notify the AOB/D and Provide the Following Information: Lat / Long, Estimated Number of Gallons and a Map Detailing The Area.</i></p>							

North Zone							
Frequencies	RX	Tone	TX	Tone	AM / FM	Position	Name
NIFC CMD 50	170.7625	167.9 (7)	162.9375	167.9 (7)	FM	AOBD NORTH	Jesse Best
A/G CMD NORTH	165.4375		165.4375		FM	AOBD SOUTH	John Keesee
A/G TAC NORTH	169.2875		169.2875		FM	ASGS NORTH	Don Mitchell
TFR	119.0750		119.0750		AM	ASGS SOUTH	Ray Ucha
AIR TACTICS	171.1125		171.1125		FM	MARIPOSA	Mike Perez
ROTOR NORTH	134.4250		134.4250		AM	AUBERRY HB	Brad Nelson
AIR BRIEF	172.1375		172.1375		FM	ATGS	Mark Bertucelli
TOLC	119.7250		119.7250		AM	ATGS	Pat Basch
DECK	163.1000		163.1000		FM	HILCO/ATGS	Matt Lynde
CALCORD - MEDICAL	156.0750	156.7 (6)	156.0750	156.7 (6)	FM	HILCO	Casey Jones
AIRGUARD -	168.6250		168.6250	110.9 (1)	FM		

South Zone							
Frequencies	RX	Tone	TX	Tone	AM / FM	FAA #	Type
NIFC CMD 5	169.7500	146.2 (5)	167.1000	146.2 (5)	FM	107Z (607)	2
A/G CMD SOUTH	167.0625		167.0625		FM		
A/G TAC SOUTH	166.6125		166.6125		FM	352SA (526)	3
TFR	119.0750		119.0750		AM	FHQB (520)	2
AIR TACTICS	171.1125		171.1125		FM	212TH	2
ROTOR SOUTH	132.5250		132.5250		AM	63HB	2
AIR BRIEF	172.1375		172.1375		FM	312KA	1
TOLC	119.7250		119.7250		AM	473CH	1
DECK	163.1000		163.1000		FM		
CALCORD - MEDICAL	156.0750	156.7 (6)	156.0750	156.7 (6)	FM	191SG	3
AIRGUARD -	168.6250		168.6250	110.9 (1)	FM	46HX	3
						205TK (532)	2
						78EC (554)	2
						70K	1
						461WY	1
						43HX	1

HELICOPTERS							
Frequencies	Make/Model	Helibase	Start	Available	Remarks		
NIFC CMD 5	Bell 209	Fresno	0700	0800	EU/HILCO/ATGS/A-87		
A/G CMD SOUTH	AS 350 B3	Auberry	0700	0800	EU/HILCO/A-28		
A/G TAC SOUTH	205 A1++	Auberry	0700	0800	EU/Standard/Longline/A-17		
TFR	Bell 212	Auberry	0700	0800	CWN/A-244		
AIR TACTICS	UH-1H	Auberry	0700	0800	CWN/BUCKET/A-171		
ROTOR SOUTH	K-1200	Auberry	0700	0800	CWN/Longline/Bucket/A-172		
AIR BRIEF	CH-47D	Auberry	0700	0800	SURGE/LL/Bucket/A-322		
TOLC							
DECK	Bell 206	Mariposa	0700	0800	CWN/HILCO/RECON/A-320		
CALCORD - MEDICAL	Bell 407	Mariposa	0700	0800	CWN/HILCO/A-153		
AIRGUARD -	205A1++	Mariposa	0700	0800	EU/Standard/Longline/A-318		
	205 A1++	Mariposa	0700	0800	EU/Standard/Longline/A-305		
	UH-60A	Mariposa	0700	0800	CWN/Longline/Bucket/A-55		
	CH-46E	Mariposa	0700	0800	CWN/Longline/Bucket/A-29		
	K-1200	Mariposa	0700	0800	CWN/Longline/Bucket/A-130		

FIXED WING			
FAA #	Make/Model	Base	Start
AA15	AC-690B	Fresno	1800

JK

Wildland Fire COVID-19 Screening Tool

Interim Standard Operating Procedures – 4/15/2020

NOTE: This Screening Tool represents interim guidance. Additional clarification will be coming as soon as it is defined.

DO YOU HAVE ANY OF THESE SYMPTOMS?

Today or in the past 24 hours, have you had any of the following symptoms listed below, in addition to your normal work-related issues?

- Fever, felt feverish, or had chills? Repeated shaking with chills?
- Cough? Shortness of breath or difficulty breathing?
- Muscle pain? Headache? Sore throat?
- New loss of taste and/or smell?

If in doubt about any of these symptoms, consult a Physician.

In the past 14 days, have you had contact with a person known to be infected with the coronavirus (COVID-19)?

Take temperature with touchless thermometer if available

INSTRUCTIONS FOR SCREENING

- If resource is positive for any symptoms prior to mobilization **DO NOT MOBILIZE.**
- At Entries – Consider the adequate number of personnel needed for screening. Although medical personnel are ideal, screeners do not have to be medically trained.
 - o If resource is positive for any symptoms including fever (over 100.4) at entry **DO NOT ANNOUNCE-** ask to step aside.
 - o Escort sick individual to isolation area.
 - o Isolation support personnel should begin documentation. Have sick individual contact Supervisor for further direction.
 - o Notify public health officials.
 - o Have individual transported as appropriate.
 - o Protect and secure any collected Personal Identifiable Information or Personal Health Information.

FINANCE MESSAGE

AVAILABLE OPTIONS FOR SUBMITTING TIME:

Resources can submit time electronically (email below) or hard copy. There will be drop boxes for CTRs and shift tickets in each spike camp and at ICP. Documents will be picked up daily at spike camps and ICP and transported to Finance.

If you opt to use the fillable PDF CTR or Shift Ticket you have a couple of options for submitting them to Finance:

Option 1- Resource fills out fillable PDF and submits to Supervisor for signature. Supervisor digitally signs PDF, sends signed copy back to Resource **AND** on to Finance.

Option2 - Resource fills out fillable PDF, Supervisor (if comfortable) signs directly on the same device. Resource e-mails the PDF directly to Finance.

Crews: Please submit a copy of your manifest to Finance – it can be electronic or hard copy. Please note any AD crew members on the manifest with their position code and ECI number if known.

Single Resource ADs: Please submit your Single Resource Casual Hire form to Finance – it can be electronic or hard copy.

Cooperators: Please submit your agreement and resource order to Finance – either electronically or hard copy. Please don't skip any pages and assure that the signature page is shown.

ALL OVERHEAD, CREWS (INCLUDING AGENCY ENGINE, AIRCRAFT AND HAND CREWS) AND COOPERATORS FROM BOTH THE NORTH AND SOUTH ZONE WILL HAVE THEIR TIME PROCESSED BY NORTH ZONE FINANCE.

Contractors: Please submit the finance portion of your contract/agreement and resource order to Finance – either electronically or hard copy. Please don't skip any pages and assure that the signature page is shown.

ALL PRIVATE VENDORS FROM BOTH THE NORTH AND SOUTH ZONE WILL HAVE THEIR TIME PROCESSED BY SOUTH ZONE FINANCE.

Please try to submit time at least every other day. You may choose from any of the options above as long as the copy we receive in finance is legible. What works best for you, will work for us.

This fire is under Cost Apportionment, All DIVS and OPBD will need to do a daily debrief with the Cost Apportionment Team by calling 925-588-6902.

2020.creek.finance@firenet.gov

NORTH ZONE FINANCE CONTACTS:

Finance Chief:	Biddy Simet	406-250-4188
Finance Chief (t):	Denise Middlesworth	406-249-2428
Time Unit Leader (t):	Terry Groesbeck	940-783-3746
Time recorders:	Vickie, Tammy & Debra	940-783-2965
Comp Unit Leader:	Elaine Poser	940-783-2894

PERSONNEL TIME

SOUTH ZONE FINANCE CONTACTS:

Finance Chief:	Theresa Fork	530-251-3013
Equipment Time Unit Leader:	Maggie Prochazka	925-532-5448
Equipment Time Recorders:	Jesse, Sarah, Dana & Carla	925-532-5492
Comp Unit Leader:	Elaine Downing	928-486-5295

EQUIPMENT TIME

eFC-33 INITIAL INPUT FORM

1 2 3 4 5 6 7

Overhead: complete one form per person.
All Others: complete one form per vehicle.

Request Number						
E	1	2	3	4	5	6

State Agency	Incident Number	Incident Name	Incident Index Code	Incident PCA Code
INCIDENT CA				
Strike Team	Resource ID - Fire Assignment	Home Station / Office Location		
RESOURCE S T	E-3489	PASO ROBLES		

YOUR NORMAL DUTY SCHEDULE	24 Hr 8-8 7-7 Other	Portal to Portal?	YOUR AGENCY	HOME UNIT	COMMIT	RELEASE	YOUR CELL PHONE #
<input checked="" type="checkbox"/> One Box		<input checked="" type="checkbox"/>	CAL FIRE	S L U			809-822-2086

PERSONNEL	Schedule		First Name	Rank or Classification	# of Regular Duty Scheduled Hours per Day									
	A	B			Mon	Tue	Wed	Thu	Fri	Sat	Sun			
EMPLOYEE 1														
EMPLOYEE 2														
EMPLOYEE 3														
EMPLOYEE 4														
EMPLOYEE 5														
EMPLOYEE 6	<input checked="" type="checkbox"/> One Box		Robert	FC										

VEHICLE	Schedule	Other If Other, explain	Radio ID	Kind of Vehicle	ID No/X No
	A B		E-3489	FTH	0 2 X 1 2 3
VEHICLE 1					X
VEHICLE 2					X
	<input checked="" type="checkbox"/> One Box	Chainsaw Quantity:	Portable Pump?		

Put a Dezer and it's Transport on a single form. All others, use one form per individual vehicle.

ADDITIONAL INFO



FC-33 DAILY UPDATE

FC-33 DAILY UPDATE

DATE:		24 Hr	12 Hr		
ASSIGNMT:					
RQST #:					
Radio IDs:	DOZER BLADE HRS	PRTBL PUMP HRS	# OF SAWS	HRS ON EACH SAW	NOTES
ST Leader:					
Engine/Crew:					

Comments (any changes?):

CELL PHONE #:

DATE:		24 Hr	12 Hr		
ASSIGNMT:					
RQST #:					
Radio IDs:	DOZER BLADE HRS	PRTBL PUMP HRS	# OF SAWS	HRS ON EACH SAW	NOTES
ST Leader:					
Engine/Crew:					

Comments (any changes?):

CELL PHONE #:

SHIFT TICKET EXAMPLE

EMERGENCY SHIFT TICKET and EVALUATION FORM					Contractor Name		
Incident or Project Name TUBBS			Incident Number CALNU010045		Request Number E#		
Agreement Number CZU-0000023987			Operator #1 BOB SMITH		Operator #2 CHRIS SMITH		
Equipment Make CAT			Equipment Model / Type D6M, DZR type 2		Operator Furnished By: <input checked="" type="checkbox"/> Contractor <input type="checkbox"/> Government		
Serial Number 678432			Licence Number N/A		Operating Supplies Furnished By: <input checked="" type="checkbox"/> Contractor <input type="checkbox"/> Government		
Equipment Use (Circle) Hours Days / Miles			Equipment Status		Equipment Status <input checked="" type="checkbox"/> Inspected <input checked="" type="checkbox"/> Under Agreement <input type="checkbox"/> Released by Government <input type="checkbox"/> Withdrawn by Contractor		
Date Mo / Day	Start	Stop	Work	Assignment	Remarks/Comments ** 2 OPERATORS		
8/3	0700	2400	17	DIV M			
8/4	0001	0700	7	DIV M			
Vendor Rating					Govt. Rep. Name and Position - PRINT Mike Weber - HEQB		
Met Performance Expectations					Govt. Rep. Signature <i>Mike Weber</i>		
Equipment in Safe Working Condition					Contractor Signature <i>Bob Smith</i>		
Operator Skill Level					Date 08/04/20		
Operates Safely					Time 0700		
Operator's Cooperation Level					Date 08/04/20		
Overall Performance					Time 0700		
* NOTE: Any rating of POOR requires an explanation in Comment Section.					CALFIRE 297		
**Final evaluation or for more documentation, use an ICS Form 230 or equivalent.					(Rev 3-2011)		
Pink - Finance		Blue - Home Unit HE Coordinator		Yellow - Vendor		White - Govt Representative	

EMERGENCY SHIFT TICKET and EVALUATION FORM					Contractor Name		
The responsible Government Officer will complete this form each shift					BIG AL EXCAVATING		
Incident or Project Name TUBBS			Incident Number CALNU010045		Request Number E #		
Agreement Number CZU-0000023987			Operator #1 BOB SMITH		Operator #2 CHRIS SMITH		
Equipment Make KENWORTH			Equipment Model / Type 18 WHEEL TRANSPORT		Operator Furnished By: <input checked="" type="checkbox"/> Contractor <input type="checkbox"/> Government		
Serial Number VIN #			Licence Number 9999999		Operating Supplies Furnished By: <input checked="" type="checkbox"/> Contractor <input type="checkbox"/> Government		
Equipment Use (Circle) Hours Days / Miles			Equipment Status		Equipment Status <input checked="" type="checkbox"/> Inspected <input checked="" type="checkbox"/> Under Agreement <input type="checkbox"/> Released by Government <input type="checkbox"/> Withdrawn by Contractor		
Date Mo / Day	Start	Stop	Work	Assignment	Remarks/Comments ** 2 OPERATORS		
8/3	0700	2400	17	DIV M			
8/4	0001	0700	7	DIV M			
Vendor Rating					Govt. Rep. Name and Position - PRINT Mike Weber - HEQB		
Met Performance Expectations					Govt. Rep. Signature <i>Mike Weber</i>		
Equipment in Safe Working Condition					Contractor Signature <i>Bob Smith</i>		
Operator Skill Level					Date 08/04/15		
Operates Safely					Time 0800		
Operator's Cooperation Level					Date 08/04/15		
Overall Performance					Time 0800		
* NOTE: Any rating of POOR requires an explanation in Comment Section.					CALFIRE 297		
**Final evaluation or for more documentation, use an ICS Form 230 or equivalent.					(Rev 3-2011)		
Pink - Finance		Blue - Home Unit HE Coordinator		Yellow - Vendor		White - Govt Representative	

Turn shift tickets into Finance.

SHIFT TICKET EXAMPLE

EMERGENCY SHIFT TICKET and EVALUATION FORM					Contractor Name H2O DUDE		
Incident or Project Name LILAC INC		Incident Number CAMVU 024612		Request Number E #		Operator #1 JOHN HANKS	
Agreement Number MEU - 0000012345					Operator #2 		
Equipment Make FREIGHTLINER		Equipment Model / Type WATER TENDER 2500+ TYPE 1				Operator Furnished By: <input checked="" type="checkbox"/> Contractor <input type="checkbox"/> Government	
Serial Number VIN#		Licence Number 55555555				Operating Supplies Furnished By: <input checked="" type="checkbox"/> Contractor <input type="checkbox"/> Government	
Equipment Use (Circle) Hours Days / Miles					Equipment Status <input checked="" type="checkbox"/> Inspected <input checked="" type="checkbox"/> Under Agreement		
Date Mo / Day	Start	Stop	Work	Assignment			
12/8	0700	1900	12	DIV A			
12/8	1900	2400	5	OFF SHIFT			
12/9	0001	0700	7	OFF SHIFT			
Vendor Rating Poor* Avg. Good Exc. N/A					Govt. Rep. Name and Position - PRINT Mike Weber - DIVS		
Met Performance Expectations					Govt. Rep. Signature <i>Mike Weber</i>		
Equipment in Safe Working Condition					Contractor Signature JOHN HANKS		
Operator Skill Level					Date 12/08/20		
Operates Safely					Time 1900		
Operator's Cooperation Level					Remarks/Comments ** ONE OPERATOR		
Overall Performance					CALFIRE 297 (Rev 3-2011)		
* NOTE: Any rating of POOR requires an explanation in Comment Section. **Final evaluation or for more documentation, use an ICS Form 230 or equivalent.							
Pink - Finance		Blue - Home Unit HE Coordinator		Yellow - Vendor		White - Govt Representative	

Vendor Rating
must be done.

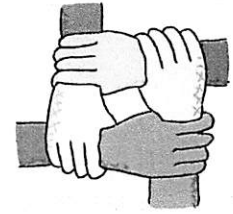
EMERGENCY SHIFT TICKET and EVALUATION FORM					Contractor Name WATER GUY		
The responsible Government Officer will complete this form each shift							
Incident or Project Name LILAC INC		Incident Number CAMVU 024612		Request Number E #		Operator #1 BOB SMITH	
Agreement Number BTU-0000329876					Operator #2 BILL SMITH		
Equipment Make PETERBILT		Equipment Model / Type WATER TENDER 2500 + TYPE 1				Operator Furnished By: <input checked="" type="checkbox"/> Contractor <input type="checkbox"/> Government	
Serial Number VIN #		Licence Number 9999999				Operating Supplies Furnished By: <input checked="" type="checkbox"/> Contractor <input type="checkbox"/> Government	
Equipment Use (Circle) Hours Days / Miles					Equipment Status <input checked="" type="checkbox"/> Inspected <input checked="" type="checkbox"/> Under Agreement		
Date Mo / Day	Start	Stop	Work	Assignment			
12/8	0700	2400	17	DIV M			
12/9	0001	0700	7	DIV M			
Vendor Rating Poor* Avg. Good Exc. N/A					Govt. Rep. Name and Position - PRINT Mike Weber - DIVS		
Met Performance Expectations					Govt. Rep. Signature <i>Mike Weber</i>		
Equipment in Safe Working Condition					Contractor Signature <i>Bill Smith</i>		
Operator Skill Level					Date 12/09/20		
Operates Safely					Time 0700		
Operator's Cooperation Level					Remarks/Comments ** 2 OPERATORS		
Overall Performance					CALFIRE 297 (Rev 3-2011)		
* NOTE: Any rating of POOR requires an explanation in Comment Section. **Final evaluation or for more documentation, use an ICS Form 230 or equivalent.							
Pink - Finance		Blue - Home Unit HE Coordinator		Yellow - Vendor		White - Govt Representative	

Vendor Rating
must be done.

Turn shift tickets into Finance.



Human Resource Message



Food for Thought

As we go into transition, there are always challenges. Ensuring appropriate communication is important. New factors, such as COVID mitigations, processes and procedures will add to those challenges. Finish and transition strong.



***When faced with a
challenge, look for a
way, not a way out. –***

-David L. Weatherford

**Andrea Cabida HRSP- 707-330-9939;
andrea.cabida@usda.gov; replacement will be
in on Friday, Welcome Janine Summy.**

Peer Support Team Message:

INCIDENT PEER SUPPORT:

We have a few people on the incident for any peer support related needs. The best way to get a hold of them is to call them directly.

Amber Henderson 805 794-1690
Mike DeLeo 805 573-2419
or
CAL FIRE Peer Support/Helpline
916-445-4337

Below are other Team Members not on the incident who can also be contacted directly:

Tony Howard 916-224-1543
Mike Aiello 916-584-0548
Warren Parrish 916-823-6641
Shawna Powell-530 717-0667
Nikole Schutz 916-709-0434
Jeremy Sanders- 916 281-6472
Amy Head 916-956-3277
Chris Lomanto 916-247-6974
Connie Quarisa 916-213-8697

Watch for the signs and symptoms of stress in yourself and the people around you. Try and stay positive and get much needed rest when you can. We can do this, together!

Stay Healthy, Stay Alert and Stay Strong!

CAL FIRE Employees can also contact EAP directly at: 1-866-327-4762

RESOURCE ADVISORY MESSAGE

Reporting of Cultural Sites

- Do not use the radio. Looters listen to our frequencies and will note where you find things.
- Grab a GPS point, bump it up the chain of command or directly inform a Resource Advisor on the line or in camp.

Stay Out! – Flagging Combinations for Sensitive Areas

- READs will be using flagging for areas to avoid suppression activities. There are two pieces to watch for.
 - Strip of white and a strip of blue/black.
- For more information, please consult with a READ.

Food on the Line Attract Wildlife Over Time.

- Keep food off the line as much as possible. It lures in wildlife, especially on indirect and contingency lines. Food associate's wildlife to humans and could bring about a dangerous situation to others on the line.

Riparian Areas

- Meadows are natural barriers. Tie the line to them and not through them.
- Stream and creeks should be approached with care. If needing to cross, minimize damage (i.e. on a dozer lift the blade and only track over) to prevent post-fire stability issues. Do not push or cut line through.

Water Drafting Sites

- Access the water source while trying your best to minimize damage to the soil and vegetation.
- If using a portable pump, make sure there is a spill kit and absorption pads to catch any accidental spills.
- Place portable pumps as far away as you can from the water source. Use screens on the intakes.
- Store fuel cans away from the water source and on a flat surface.

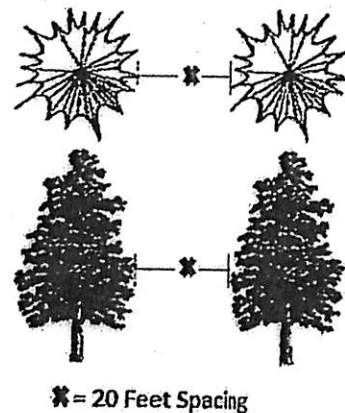
Tree Felling During Fire Line Creation

- Only cut down trees that are necessary during line construction.
 - Ask yourself, "do I really need to remove this tree? Would removal of lower hanging limbs be sufficient?"
- Avoid cutting hardwoods like black oaks when possible.

Removing Fuels in the Forest

Trees across the Sierra National Forest have a monetary value. If this can be done safely and without compromising the line, consider creating a shaded fuel break. A shaded fuel break means some trees will remain with a certain spacing as stated below. This more commonly applies to indirect and contingency lines.

1. Cut trees with a 20' x 20' crown spacing. This means leave one tree untouched every 20 feet with all other trees removed. The 20 feet spacing is measured from the edge of the untouched tree's branches to the next untouched tree (see image to the right). The single tree left should be undamaged and appear healthy. *Healthy = no dead tops, multi tops or obvious signs of disease*
2. Deck all trees cut over a 10" DBH. Decking is to stack the trees in a linear fashion.



Removal of Fire Burnt Trees on Federal Land along Roadways

Clearing trees along the roadways on National Forest land needs to follow the following guidelines:

Cut trees that:

- No longer have any needles left or remaining needles are black, charred and dry
- Have 60% or more of the green crown (branches with needles) that is scorched
- Have deeply charred bark that no longer has any defining characteristics such as bark shows no grooves, no fissures, and no possible puzzle like appearance and/or natural coloration.

Keep trees that are:

- Vigorous and most likely to survive. These should have green, pliable needles, and have 40% or more of a green crown.
- If a tree has 40% or more of a green crown and the bole of the tree is not burnt through, consider leaving the tree.
- Tree has defining characteristics like bark shows grooves, fissures, and may have a puzzle like appearance and/or natural coloration.
- Not a hazard to the road.

Trees that are painted with a green letter "L" are NOT to be cut. They are "Leave" trees.

OHV Routes (Brewer, Red Mtn, & Coyote Lakes Areas)

- Do not use heavy equipment on these routes. They will also likely damage the heavy equipment due to large cobbles and boulders. These are highly prized 4x4 routes that attract people from all over the country.
- Constructing line to meet up with the OHV routes is allowed.
- Using existing OHV routes as a firing line is allowed.

Keep up the good work for cultural and natural resources by doing the following:

- Picking up trash/micro-trash.
- Removing unused flagging.
- Sharing suppression information and working alongside READs.
- To the extent possible, when moving on to a new area leave the former better than you found it.

PUBLIC INFORMATION SECTION/ CREEK FIRE

PUBLIC INFORMATION: (844)-668-3473

NORTH ZONE MEDIA: (844)-668-3473

SOUTH ZONE MEDIA: (559)-790-6374

FEDERAL FIRE SOCIAL MEDIA POLICY

Social media posts reflect on the professionalism of your crew, your agency and the Wildland Firefighting Community. The U.S. Forest Service has enjoyed a reputation as a leader in wildland firefighting for over 100 years. Protect our legacy with good conduct on the Fireline as well as online. When assigned to a federal fire you are considered a federal employee under the delegation of authority by the host agency. Even if you are a contractor, AD or from a partner agency we recommend that follow professional guidelines and ethical best practice standards which apply to federal employees all the time.

CAL FIRE SOCIAL MEDIA POLICY

When assigned to a CAL FIRE incident you will adhere to the CAL FIRE Social Media Policy, Section 0691.

MEDIA

Section 409.5 (d) of the California State Penal Code allows the news media to enter scenes of disaster, riot or civil disturbance. Properly identified members of the news media shall not be restricted from entering locations specified within the code. However, this does not include crime scenes, private property and does not imply that the news media may interfere with incident operations while they are in the areas of concern.

LOST AND FOUND

Lost & Found remains at Sierra High School 33326 Lodge Rd, Tollhouse, CA 93667. Items will be located in the Fire Preventions Logo Trailer that is staffed by PIO's assigned to the Creek Fire. The trailer is in the front parking lot between the two gyms at the High School.

Mail continues to be accepted at: CAL FIRE FKU – 210 S. Academy Ave. Sanger, CA 93657

Please include the following information...

NAME:

O#:

Contact number:

Travel Map

Creek Incident

CA-SNF-001391



East Side of Fire from Sierra Camp

Take Lodge Rd NW 1.1 miles to SR-168. Take a right on SR-168 for approximately 37 miles.

West Side of Fire from Sierra Camp

Take Lodge Rd NW 1.1 miles to SR-168. West on SR-168 for 1.6 miles to Auberry Rd. North on Auberry Rd for 2.9 miles. Right on Tollhouse Rd for 6.3 miles.

West Side of Fire from North ICP

Take Rd 200 NE for 14 miles. Left on Rd 222 for 0.7 miles.

East Side of Fire from South ICP

Take Rd 200 W for 0.4 miles to SR-41. N on SR-41 for 2.4 miles. Right on Big Sandy Rd for 6.5 miles. Left on Sky Ranch Rd for 2.6 miles. Right on "Save the Rock" Rd for 2.2 miles

Sierra Camp Location
33326 Lodge Rd, Tollhouse, CA 93667

North ICP Location
45077 Road 200, O Neals, CA 93645

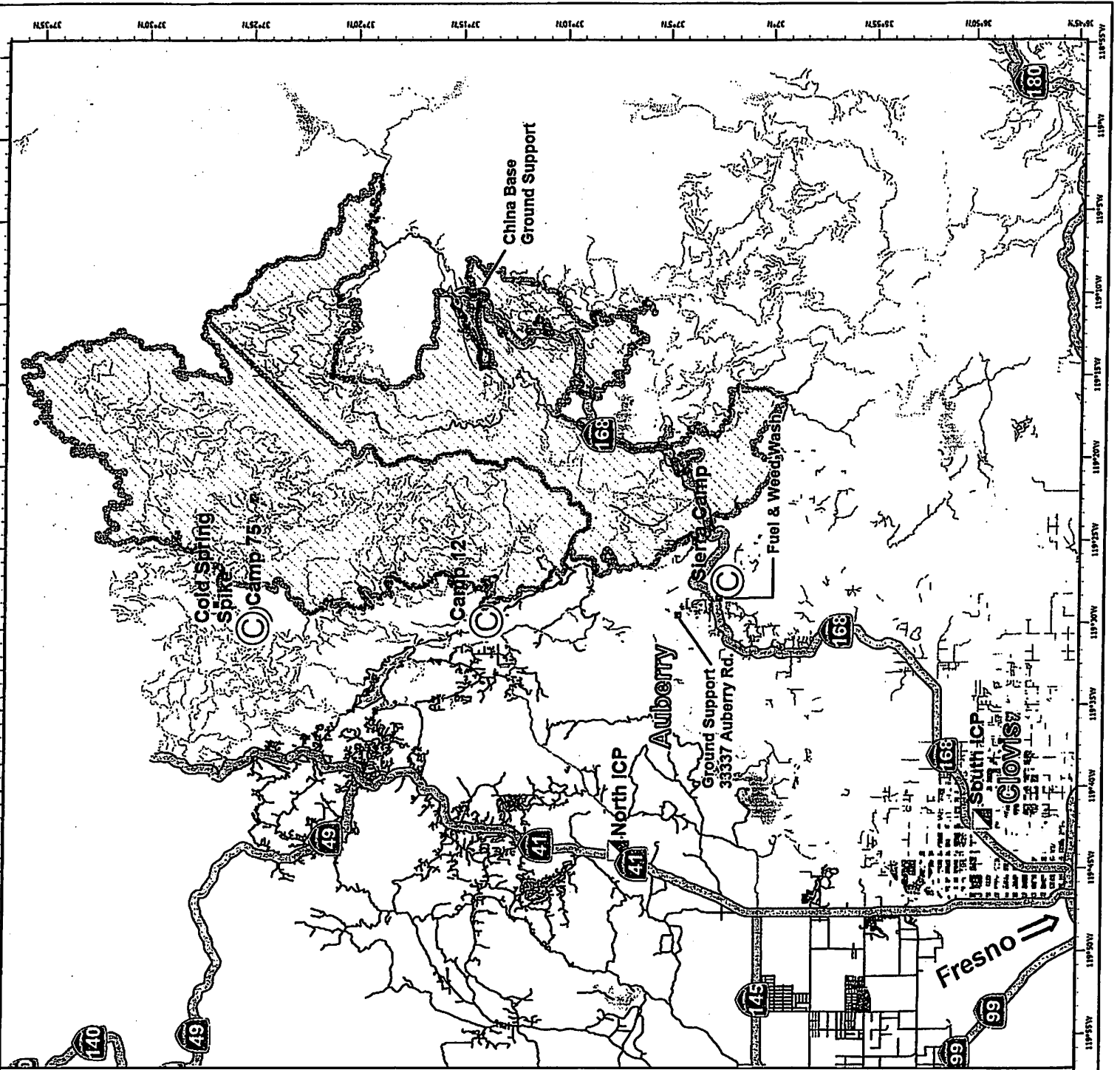
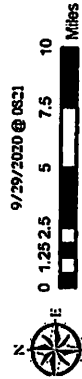
South ICP Location
808 Fourth St., Clovis, CA

Ground Support Location
2 miles N on Auberry Rd from SR-168

Fuel and Weed Wash Location
1000 Ft. N at the intersection of
SR-168 & Lodge Rd.

NAD 83 California Tenth Albers

9/29/2020 @ 08:21



CHINA PEAK CAMP

LOGISTICS MESSAGE

SERVICES SCHEDULE

For Stars Catering:

Breakfast: 0600-0900

Dinner: 1700-2100

Sack Lunch Distribution: 0600-2200

Showers: 0500-1200

1400-2300

Fuel Tender: Red Triangle 0630-0830

1730-2030

Medical: Frontline 24 hr

Operations:

Day: Alex McBath 530-526-1320

Night: Steve Burns 530-545-3991

Logistics: 661-747-2292

Day Sleeping: Contact Facilities

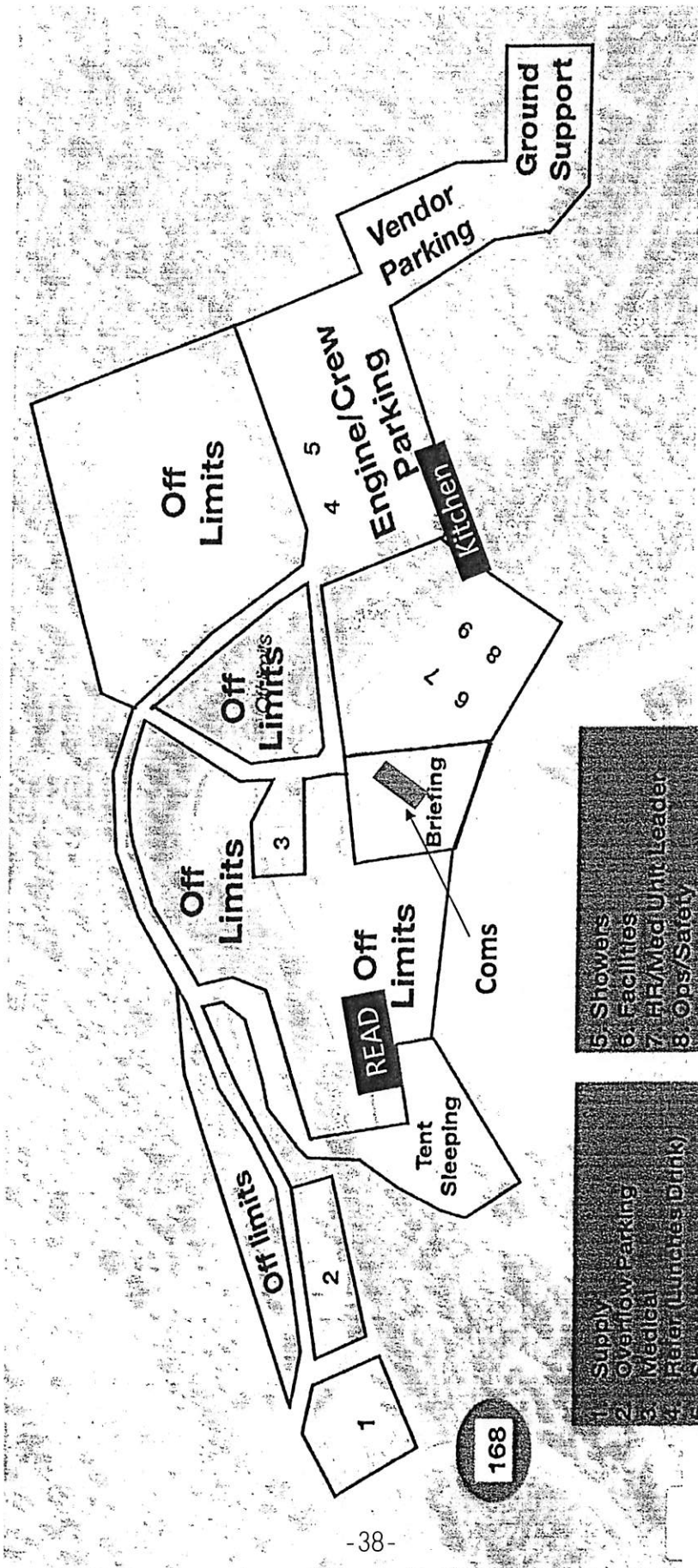
China Peak Ground Support: 530-251-6492

Mechanic: 208-369-0802

Mechanic: 575-937-2228



Creek Fire
China Peak Basecamp
59265 Highway 168
LakeShore, CA 93634



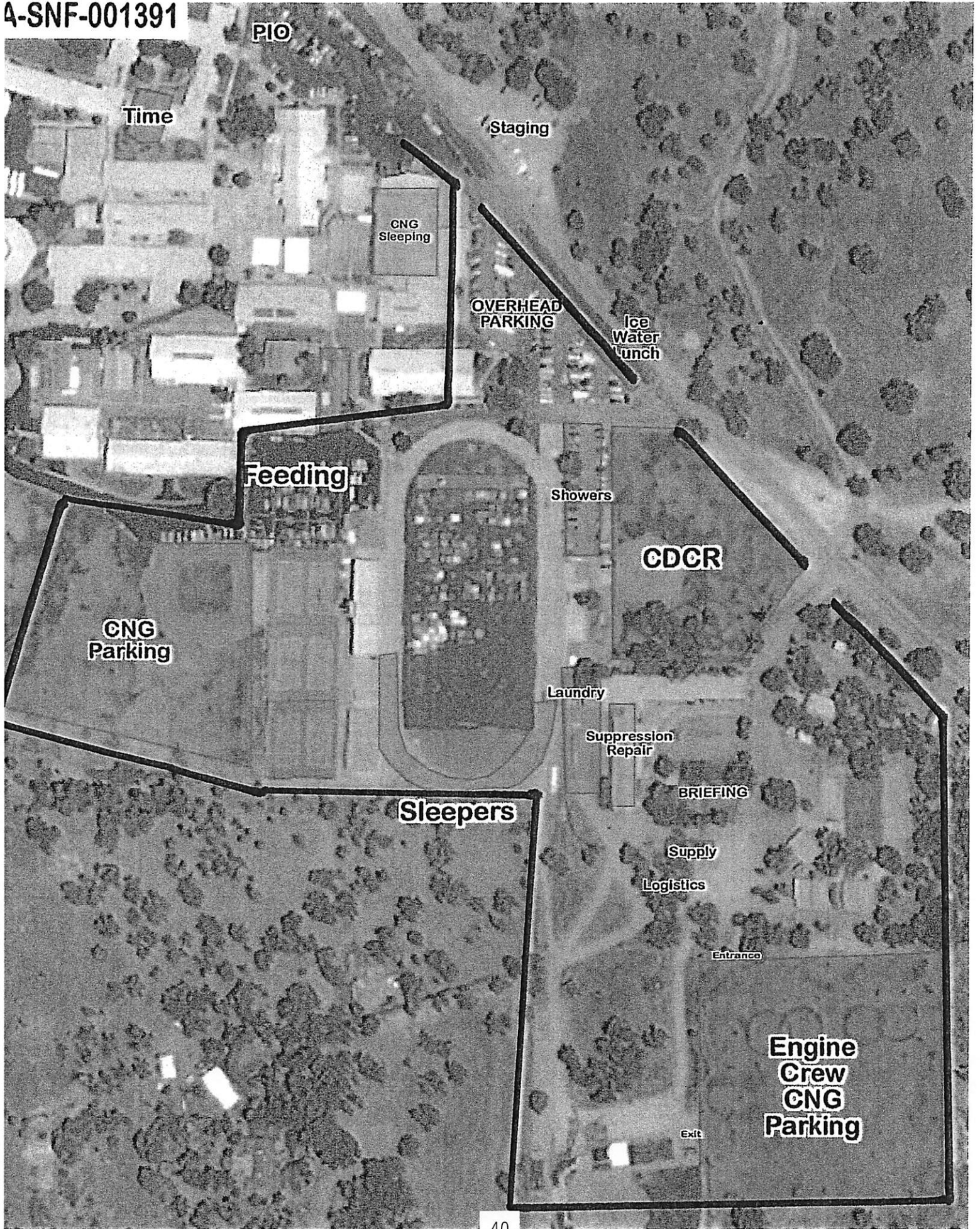
- 5. Showers
- 6. Facilities
- 7. HR/Med Unit Leader
- 8. Ops/Safety
- 9. Supply/Logistics

- 1. Supply
- 2. Overflow Parking
- 3. Medical
- 4. Refrer (Lunches/Drink)
- 5. Showers

SIERRA CAMP
LOGISTICS MESSAGE
SERVICES SCHEDULE

MKU:

Breakfast:	0500-1100
Dinner:	1700-2200
Sack Lunch Distribution:	0600-2000
Laundry Service:	0600-2200
Showers:	24 hr Service
Medical:	911
Fuel: Hw168 X Lodge	24 hr Service
Operations: Jim McDougald	559-281-4304
Logistics:	925-588-6883
Accommodations:	925-532-5579
Sierra Ground Support: 333337 Auberry Rd.	
Mechanic: 24 hr	925-532-5573
Hired Equipment/HEMS	925-532-5607
Weed Wash	0600-2100



Demob Process for South Zone
Federal, State, County & Local Resources

Start at China Peak:

- 1) Get DEMOB form ICS 221, contact Frank Baker in Demob.
- 2) Check out of Supply at China Peak.
- 3) If you are a Federal Resource call North Zone Finance at 940-783-2965
- 4) Go to Ground Support (vehicle inspection) 33337 Auberry Rd.
All tactical equipment and AOV's must go through ground support. If you're in a rental you can skip this.
- 5) Go to Weed Wash. All resources coming off the line **MUST** go through Weed Wash. (Located at Hwy 168 and Lodge Road on the north/east side of the road.)
You will have to return back to ground support and weed wash if you do not get inspected and washed before coming down to ICP!!!
- 6) State, go to CalFire Finance at: Hilton Hotel Fresno Convention Center 2233 Ventura St. Fresno. County, Local Gov't, OES Resources, stop by OES @ Sierra High School or bring F42 to South Zone Finance at Veterans Memorial Building 808 N. 4th St. Clovis.
- 7) Go to Veterans Memorial 808 N. 4th St. Clovis
 - a) Go to Comm Unit
 - b) Go to Demob

All resources that require an OF-288 (FTR) **MUST** clear TIMES with North Zone Finance before leaving the Creek Fire. For questions call 682-220-4332

Extensions: You must get approval from both the Division Supervisor and your agency. Bring extension form to check in at Veterans Memorial Clovis.

Questions Demob South (916) 591-9008



**SOUTH ZONE CREEK FIRE - CA-SNF-001391
TENTATIVE DEMOBS**



10/8/2020

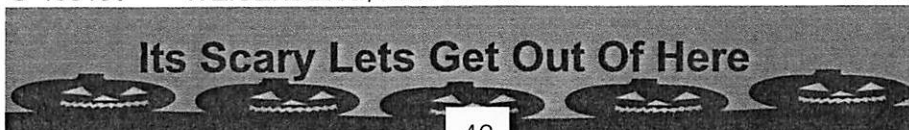
Time	Req #	Resource Name	Item Code
09:30	C-400012	CREW-T2- SQF-COBRAS - 1	HC2I
10:00	C-100090	FKU-T2 IA-CREW 1	HC2I
10:00	C-400020	ARROYO GRANDE IHC	HC1
11:00	C-400021	LAGUNA IHC	HC1
08:30	E-400011	ENGINE - T3 - SNF 42 (ENGINE - SNF 42) (CA-SICC)	ENG3
08:30			
09:00	E-400010	CABANAS ENG 341	ENG3
09:00			
08:00	O-100190	STEVENS, IAN M	DIVS
09:00	O-100753	RICHARD, DANNY NORTH ZONE FALLERS INC.-NEALY/PARKER	MCAD
09:00	O-277	NETZ, PAUL	FMOD
09:30	O-100672	DANIEL S. ROBLES, FALLER TULE RIVER	HEQB
09:30	O-71		FAL1

10/9/2020

Time	Req #	Resource Name	Item Code
TBD	C-200080	GROVELAND CREW 4	HC2I
TBD	C-100091	FKU T2IA CREW 2	HC2I
TBD			
TBD	E-100264	WATER TENDER - T1 - BONESO & HARMS WATER	WTT1
TBD	E-100268	ES3 9443C E-100268	ES3
TBD			
TBD	E-400013	INC SPA-E2061 ENG T-6	ENG6
TBD	E-400015	-CIF E671 ENG T-6	ENG6
TBD	O-100678	ROGERS, DAVE	HEQB
TBD	O-100755	NEGRETE, MAYRA	THSP
TBD	O-400015	KLIEST, STEVEN MICHAEL	PIO1
TBD	O-400069	GOSS, JOHN P	OSC1
TBD	O-400147	CARDOZA, HOLLY A	EQTR

10/10/2020

Time	Req #	Resource Name	Item Code
TBD	E-100118	ES3 9432C E-100118	ES3
TBD	E-100263	WATER TENDER - T2 - DOUBLE R SERVICES LLC	WTT2
TBD	E-400012	ENGINE - T3 - 1FD0X5HT4HEB94372	ENG3
TBD	O-100658	ZINSMEISTER, BRANDON	FOBS
TBD	O-200351	GIBBONS, LANE D	REAF
TBD	O-400014	CLARK, DANA M	PTRC
TBD	O-400018	CRUZ, ROBERT	LSC1
TBD	O-400055	STEVENS, CHRISTOPHER	OPBD
TBD	O-400138	WEISENBERG, MICHAEL J	RESL



Training Specialist Creek – South Zone (Remote)

The Training Specialist is working remotely. Training Specialist Contact Information:

- Bob Rivelle
- Call/Text: 707.498.1761
- Email: robert_rivelle@nps.gov
- Available between 0630-2200 (Daily)

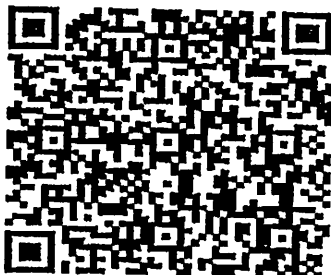
How to register as a Trainee:

- Use the QR code below. If you're unable to register using the QR code, please call 707.498.1761.
- If you registered with a different Training Specialist during this assignment, you will need to re-register.
- Once registered, you will receive text and email updates.

To close-out your training assignment:

1. **Trainer:** Complete and Evaluation Record in the back of the Position Task Book and make as many entries as possible within the individual tasks. Discuss this with your Trainee.
2. **Trainer:** Complete an individual performance rating (ICS 225) and go over the performance rating with your Trainee.
3. **Trainee:** Complete the Exit Interview.
4. Once completed, the Trainee and the Training Specialist will have a brief conversation to discuss the Position Task Book.

Training QR Code Registration:



Trainee Exit Interview QR Code:



LINE ORDER FORM

ORDER #	DATE & TIME ORDERED Received from the Line	WHO PLACED ORDER DIVS, OPS, etc...	DELIVER to (DIV, Helispot, DP, etc.) Division, Heli-Spot, Drop Point, etc.	MODE of DELIVERY Drive, Helo, pick-up			
Order Received in Communications By:				TIME:			
Communications Relayed/Placed the Order To:				TIME:			
Order Shipped to the Line By (Name):				TIME:			
ITEM#	DESCRIPTION			AMOUNT			
1	1,000 Foot Hose Lay: Includes the following 10 lengths, 1 1/2" x 100' Hose. 10 lengths, 1" x 100' Hose. 10ea. 1 1/2" Gated Wyes. 10ea. 1 1/2" to 1" Reducers. 10ea. 1" Nozzles.						
2	2,000 Foot Hose Lay: Includes the following 20 lengths, 1 1/2" x 100' Hose. 20 lengths, 1" x 100' Hose. 20ea. 1 1/2" Gated Wyes. 20ea. 1 1/2" to 1" Reducers. 20ea. 1" Nozzles.						
3	3,000 Foot Hose Lay: Includes the following 30 lengths, 1 1/2" x 100' Hose. 30 lengths, 1" x 100' Hose. 30ea. 1 1/2" Gated Wyes. 30ea. 1 1/2" to 1" Reducers. 30ea. 1" Nozzles.						
ITEM#	REQUESTED ITEM	NFES#	AMOUNT	ITEM#	REQUESTED ITEM	NFES#	AMOUNT
4	Backpack Pump, 5 gallon	1149		26	Batteries, "AA", (package)	0030	
5	Foam, 5 gallon	1145		27	Gasoline, Unleaded (gallon)		
6	Hose, 3/4 inch, 50 ft. length	1016		28	Oil, 2 Cycle Mix (quart)	0341	
7	Hose, 1 inch, 100 ft. length	0966		29	Diesel, straight (gallon)		
8	Hose, 1 1/2 inch, 100 ft. length	0967		30	Oil, Bar & Chain (gallon)	1880	
9	Increaser, 3/4" to 1"	2235		31	Fusees (box)	0105	
10	Increaser, 1" to 1 1/2"	0416		32	Torch, Drip Torch ea.	0241	
11	Nozzle, Garden 3/4 inch	0136		33	Mix, Drip Torch 3-1, 5 gal.		
12	Nozzle, Forester, 1"	0024		34	Flagging, Ribbon, Color/Roll		
13	Nozzle, KK Type, 1"	1081		35	Washcloth, Waterless	0206	
14	Nozzle, KK Type, 1 1/2"	1082		36	Water, Cubi, 5 gallon ea.	0048	
15	Reducer, 1" to 3/4"	0733		37	Water, Bottled, (case)		
16	Reducer, 1 1/2" to 1"	0009		38	Sports Drink, Gatorade (case)		
17	Tee, Hoseline, 1"x1"x 3/4"	1809		39	Food, MRE's (12 per Box)	1842	
18	Tee, Hoseline, 1"x1"x 1"	2240		40	Pump Kit, High Pressure	0870	
19	Tee, Hoseline, 1 1/2" x 1 1/2" x 1"	0230		41	Pump, High Pressure	0148	
20	Wye, Gated, 3/4" inch	0904		42	Pump Kit, Light Weight	0670	
21	Wye, Gated, 1"	0259		43	Sprinkler Kit	1048	
22	Wye, Gated, 1 1/2"	0231		44	Pump Kit, Volume	6041	
23	Tank, Collapsible. Capacity Gallons?			45	Mop-Up Kit	0772	
24	Tank, Folding/Frame. Capacity ??						
25	Wrap, Structure (roll)	0881					

Date and Time Needed: _____ Point of Contact at Delivery Location: _____

OTHER / NOTES:

LINE ORDER FORM

ORDER #	DATE & TIME ORDERED Received from the Line	WHO PLACED ORDER DIVS, OPS, etc...	DELIVER to (DIV, Helispot, DP, etc.) Division, Heli-Spot, Drop Point, etc.	MODE of DEVIVERY Drive, Helo, pick-up

Order Received in Communications By: _____ **TIME:** _____

Communications Relayed/Placed the Order To: _____ **TIME:** _____

Order Shipped to the Line By (Name): _____ **TIME:** _____

ITEM#	DESCRIPTION	AMOUNT
1	1,000 Foot Hose Lay: Includes the following 10 lengths, 1 1/2" x 100' Hose. 10 lengths, 1" x 100' Hose. 10ea. 1 1/2" Gated Wyes. 10ea. 1 1/2" to 1" Reducers. 10ea. 1" Nozzles.	
2	2,000 Foot Hose Lay: Includes the following 20 lengths, 1 1/2" x 100' Hose. 20 lengths, 1" x 100' Hose. 20ea. 1 1/2" Gated Wyes. 20ea. 1 1/2" to 1" Reducers. 20ea. 1" Nozzles.	
3	3,000 Foot Hose Lay: Includes the following 30 lengths, 1 1/2" x 100' Hose. 30 lengths, 1" x 100' Hose. 30ea. 1 1/2" Gated Wyes. 30ea. 1 1/2" to 1" Reducers. 30ea. 1" Nozzles.	

ITEM#	REQUESTED ITEM	NFES#	AMOUNT	ITEM#	REQUESTED ITEM	NFES#	AMOUNT
4	Backpack Pump, 5 gallon	1149		26	Batteries, "AA", (package)	0030	
5	Foam, 5 gallon	1145		27	Gasoline, Unleaded (gallon)		
6	Hose, 3/4 inch, 50 ft. length	1016		28	Oil, 2 Cycle Mix (quart)	0341	
7	Hose, 1 inch, 100 ft. length	0966		29	Diesel, straight (gallon)		
8	Hose, 1 1/2 inch, 100 ft. length	0967		30	Oil, Bar & Chain (gallon)	1880	
9	Increaser, 3/4" to 1"	2235		31	Fusees (box)	0105	
10	Increaser, 1" to 1 1/2"	0416		32	Torch, Drip Torch ea.	0241	
11	Nozzle, Garden 3/4 inch	0136		33	Mix, Drip Torch 3-1, 5 gal.		
12	Nozzle, Forester, 1"	0024		34	Flagging, Ribbon, Color/Roll		
13	Nozzle, KK Type, 1"	1081		35	Washcloth, Waterless	0206	
14	Nozzle, KK Type, 1 1/2"	1082		36	Water, Cubi, 5 gallon ea.	0048	
15	Reducer, 1" to 3/4"	0733		37	Water, Bottled, (case)		
16	Reducer, 1 1/2" to 1"	0009		38	Sports Drink, Gatorade (case)		
17	Tee, Hoseline, 1"x1"x 3/4"	1809		39	Food, MRE's (12 per Box)	1842	
18	Tee, Hoseline, 1"x1"x 1"	2240		40	Pump Kit, High Pressure	0870	
19	Tee, Hoseline, 1 1/2" x 1 1/2" x 1"	0230		41	Pump, High Pressure	0148	
20	Wye, Gated, 3/4" inch	0904		42	Pump Kit, Light Weight	0670	
21	Wye, Gated, 1"	0259		43	Sprinkler Kit	1048	
22	Wye, Gated, 1 1/2"	0231		44	Pump Kit, Volume	6041	
23	Tank, Collapsible. Capacity Gallons?			45	Mop-Up Kit	0772	
24	Tank, Folding/Frame. Capacity ??						
25	Wrap, Structure (roll)	0881					

Date and Time Needed: _____ Point of Contact at Delivery Location: _____

OTHER / NOTES:

UNIT LOG (ICS 214)

1. Incident Name:

CREEK

2. Operational Period:

Date From: 10/08/2020
0

Date To: 10/9/20

Time From: 0700

Time To: 0700

3. Unit Name/Designators

4. Unit Leader (Name and ICS Position)

5. Personnel Assigned/Designators

NAME	ICS POSITION	HOME BASE

6. Activity Log (Continue on Reverse)

TIME	MAJOR EVENTS

7. Prepared By: _____

Date/Time: _____

MEDICAL PLAN	1. INCIDENT NAME: Creek Fire	2. DATE PREPARED: October,07, 2020	3. TIME PREPARED: 1600	4. OPERATIONAL PERIOD 10/08/20-10/09/20 0700-0700
---------------------	---------------------------------	---------------------------------------	---------------------------	--

5. INCIDENT MEDICAL AID STATIONS			
MEDICAL AID STATIONS	LOCATION	ALS	
		YES	NO
Frontline Medical	China Peak Base Camp	XX	
EMPF Schwegler	Vermillion Spike	XX	

6. TRANSPORTATION			
A. Ambulance Services			
NAME	LOCATION	PHONE	ALS
			YES NO
American Ambulance Medic 175	DP-20 days/ DP-31 Nights	Command	XX
American Ambulance Medic 142	Vermillion Spike	Command	XX

B. AIR AMBULANCE			
NAME	LOCATION	ALS	BLS
Kern Co. 407 (Hoist)	TBD	XX	
CHP - 40 (Hoist)	TBD	XX	

7. HOSPITALS										
NAME	ADDRESS	TRAVEL TIME		PHONE	TRAUMA		HELIPAD		BURN CENTER	
		AIR	GRND		Yes	No	Yes	No	Yes	No
Clovis Community Medical Center	2755 Herndon Ave Clovis, CA 93611 36°50.32'N, 119°39.48'W	15 Min	45 Min	(559) 324-4040		XX	XX			XX
Fresno Community Regional Medical Center	2823 Fresno St Fresno, CA 93721. 36°44.58' N, 119°47.10' W	20 Min	60 Min	(559) 459-7430	L-1		XX		XX	
St. Agnes Medical Center	1303 E Herndon Ave. Fresno, Ca. 93720 36°50.15'N, 119°45.90'W	17 Min	50 Min	(559) 450-3000	L-3		XX			XX
Kaiser Fresno.	7300 N. Fresno St. Fresno, Ca 93720	N/A	50 Min	(559) 448-5568		XX		XX		XX

8. MEDICAL EMERGENCY PROCEDURES

LINE "MEDICAL-EMERGENCY" PLAN:

- Crew Supervisor to contact Division Supervisor/Operations with:
 - Patient Complaint, Condition and Location via Tactical or Command frequency. Priority 1/Red- life threatening emergency trigger Incident within Incident (IWI).
- Division Supervisor/Operation contacts South Communications:
 - Division Supervisor or POC* will run "Medical -Emergency" on the Command frequency.
 - Division Supervisor or POC* to use "Medical Incident Report" worksheet on page 118-119 of the IRPG.

POC* (Point of Contact) and/or Operations

EMERGENCY DURING OPS. BRIEF 0700-0730:

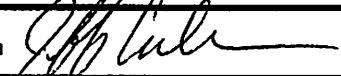
- If you have an emergency while briefing is going on over the command channel. Contact South Creek communications on SNF T5- Ch. 6

LINE "NON-EMERGENCY INCIDENT" PLAN:

- Crew Supervisor to contact Division Supervisor with:
 - Patient Complaint, Condition and Location via Tactical or Command frequency. Priority 2/Yellow and Priority 3/Green Patients do not trigger Incident within Incident (IWI).
- Division Supervisor contacts Communications:
 - Division Supervisor or POC* will run "Non-Emergency Incident" on the Command frequency.
 - Division Supervisor or POC* will use "Medical Incident Report" worksheet on page 118 -119 of the IRPG.

IN-CAMP - 24 HOUR MEDICAL

- Contact South Creek Communications
(916) 591-9026

9. PREPARED BY
MEDL - Jeff Carlton 

10. REVIEWED BY
SOF1- Brian Savage 

Medical Incident Report

FOR A **NON-EMERGENCY INCIDENT**: WORK THROUGH CHAIN OF COMMAND TO REPORT AND TRANSPORT INJURED PERSONNEL AS NECESSARY.

FOR A **MEDICAL EMERGENCY**: IDENTIFY ON SCENE INCIDENT COMMANDER BY NAME AND POSITION AND ANNOUNCE "MEDICAL EMERGENCY" TO INITIATE RESPONSE FROM COMMUNICATIONS

Use the following items to communicate situation to communications/dispatch.

1. CONTACT COMMUNICATIONS / DISPATCH (Verify correct frequency prior to starting report)
Ex: "Communications, Div. Alpha. Stand-by for Emergency Traffic."

2. INCIDENT STATUS: Provide incident summary (including number of patients) and command structure.
Ex: "Communications, I have a Red priority patient, unconscious, struck by a falling tree. Requesting air ambulance to Forest Road 1 at (Lat./Long.) This will be the Trout Meadow Medical Incident, IC is TFLD Jones. EMT Smith is providing medical care."

Severity of Emergency AND Transport Priority (priority 1, 2, 3)	<input type="checkbox"/> RED / PRIORITY 1 Life or limb threatening injury or illness. Evacuation need is IMMEDIATE <i>Ex: Unconscious, difficulty breathing, bleeding severely, 2° - 3° burns more than 4 palm sizes, heat stroke, disoriented.</i>	
	<input type="checkbox"/> YELLOW / PRIORITY 2 Serious Injury or illness. Evacuation may be DELAYED if necessary. <i>Ex: Significant trauma, unable to walk, 2° - 3° burns not more than 1-3 palm sizes.</i>	
	<input type="checkbox"/> GREEN / PRIORITY 3 Minor Injury or illness. Non-Emergency transport <i>Ex: Sprains, strains, minor heat-related illness.</i>	
Nature of Injury or Illness & Mechanism of Injury		<i>Brief Summary of Injury or Illness (Ex: Unconscious, Struck by Falling Tree)</i>
Transport Request		<i>Air Ambulance / Short Haul/Hoist Ground Ambulance / Other</i>
Patient Location		<i>Descriptive Location & Lat. / Long. (WGS84)</i>
Incident Name		<i>Geographic Name + "Medical" (Ex: Trout Meadow Medical)</i>
On-Scene Incident Commander		<i>Name of on-scene IC of Incident within an Incident (Ex: TFLD Jones)</i>
Crew Patient Care		<i>Name of Care Provider (Ex: EMT Smith)</i>

3. INITIAL PATIENT ASSESSMENT: Complete this section for each patient as applicable (start with the most severe patient)

Agency Affiliation: (NO PATIENT NAMES) Federal Contractor Local Government

Patient Assessment: Age: Weight: Chief Complaint:

(If pertinent to Injury) Skin Signs: (color/moisture/temp) Level of Consciousness: BP: HR: Respirations:

Treatment:

4. TRANSPORT PLAN:

Evacuation Location (drop point, intersection, helispot, Lat. / Long, hazards) Patient's ETA to Location:

5. ADDITIONAL RESOURCES / EQUIPMENT NEEDS:

Paramedic / EMT - Crews - Immobilization Devices - AED - Oxygen - Trauma Bag - IV/Fluid(s) - Splints - Rope rescue - Wheeled litter - HAZMAT - Extrication

6. COMMUNICATIONS: Identify State Air/Ground EMS Frequencies and Hospital Contacts as applicable

Function	Channel Name/Number	Receive (RX)	Tone/NAC *	Transmit (TX)	Tone/NAC *
COMMAND					
AIR-TO-GRND					

7. CONTINGENCY: Considerations: If primary options fail, what actions can be implemented in conjunction with primary evacuation method? Be thinking ahead.

8. ADDITIONAL INFORMATION: Updates/Changes, etc.

REMEMBER: Confirm ETA's of resources ordered. Act according to your level of training. Be Alert - Keep Calm - Think Clearly - Act Decisively

*** Follow up with MFDI upon return to ICP ***