



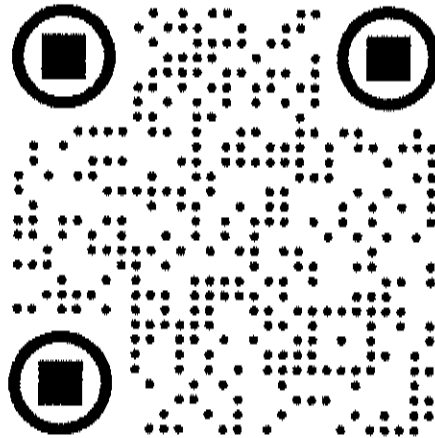
INCIDENT ACTION PLAN

OPERATIONAL PERIOD

10/24/2020 0700 - 10/24/2020 1900

Saturday

- Virtual Check-In
- IAPs
- MAPs
- DMOB LIST



- TRAINING CHECK-IN
- ICS 225WF EVAL. FORM
- EXTENSION/CREW SWAP REQUEST PROCEDURES
- Ops Briefing in Teams

CREEK FIRE

CA-SNF-001391
P5 NJ3F (0515)

0700 - Operations Briefing
1700 - Planning Meeting

INCIDENT OBJECTIVES (ICS 202)

1. Incident Name: Creek Fire	2. Operational Period:	Date From: 10/24/2020	Date To: 10/24/2020
		Time From: 0700	Time To: 1900

3. Objective(s):

- Leaders Intent:**
- Suppress and repair the Creek Fire using a full range of management tactics & strategies that minimize exposure to firefighters, communities and reduce the risk to COVID19.
- Management Objectives:**
- Ensure safety of emergency responders & public utilizing strategies & risk management processes with the highest probability of success.
 - Protect natural and cultural resources, commercial timber and critical infrastructure while utilizing resource and agency advisors.
 - Repair areas disturbed by fire suppression activities to minimize potential for excessive erosion and impacts to natural and cultural resources.
 - Foster and maintain good relationships with local cooperators, stakeholders and public while providing coordinated, accurate and timely information.
 - Effectively manage cost and track accountable property to assist with financial reconciliation.

Control Objectives

- Keep the fire south of the South Fork of Merced River and the Minarets Range.
- Keep the fire south and west of Pond Lily Lake and the Silver Divide.
- Keep the fire within the existing fire footprint.

General Situational Awareness:

Steep and rugged terrain, critically dry and receptive fuel beds, active area for fire history and drought stressed trees.

In the COVID-19 environment, high density populations or large groups are particularly at risk. To help protect yourself, your family and to ensure all employees return home safely, make sure to practice social distancing.

Enhanced hygiene (especially handwashing), PPE & monitoring practices help limit the infection rate of first responders.

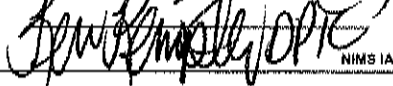
5. Site Safety Plan Required? Yes No

Approved Site Safety Plan(s) Located at:

6. Incident Action Plan

<input checked="" type="checkbox"/> ICS 203	<input checked="" type="checkbox"/> ICS 215A	<input type="checkbox"/> ICS 205 A	<input type="checkbox"/>
<input checked="" type="checkbox"/> ICS 204	<input checked="" type="checkbox"/> ICS 220	<input checked="" type="checkbox"/> Training Message	<input type="checkbox"/>
<input checked="" type="checkbox"/> ICS 205	<input type="checkbox"/> Facility Maps	<input type="checkbox"/> Travel Map	<input type="checkbox"/>
<input checked="" type="checkbox"/> ICS 206	<input checked="" type="checkbox"/> Weather Forecast	<input type="checkbox"/> Demob Plan	<input checked="" type="checkbox"/> HR Message
<input type="checkbox"/> ICS 208	<input checked="" type="checkbox"/> Fire Behavior	<input checked="" type="checkbox"/> Finance Message	<input checked="" type="checkbox"/> ICS 214

7. Prepared By: Christie Neill / Dena Chavez **Position/Title:** PSC **Signature:** 

8. Approved by Incident Commander: Jerry McGowan **Signature:** 



Creek Fire Weather Forecast (Above 5000 FT)



FORECAST NO: 47

NAME OF FIRE: Creek Fire

PREDICTION FOR: 0600 Sat to 0600 Sun

UNIT: CA-SNF-001391

SHIFT DATE: 10/24/20

SIGNED: John Pendergrast

Incident Meteorologist - John Pendergrast

IMET PHONE: 240-499-6649

WEATHER DISCUSSION: Dry conditions with mild temperatures continue with light upslope winds 5 to 10 mph and gusts to 15 mph along ridges. Winds will slowly increase into Sunday ahead of a strong cold front, which will sweep across the region Sunday night. Critical fire weather conditions are expected with very cod readings on Monday with gusty winds of 30 to 40 mph upper elevations along with very low humidity. No precipitation is expected well into next week.

WEATHER FORECAST FOR SATURDAY: Mostly sunny. Mixed haze/smoke lingering into afternoon.

TEMPERATURES: Max 60° to 65 **24 HR Trend:** Same.

HUMIDITY: Min 18 to 23% **24 HR Trend:** Same.

20-FOOT WIND: Variable 2 to 4 mph, becoming Southwest 4-7 mph with afternoon gusts 13 mph upper slopes and ridges.

SLOPE/VALLEY – Downslope 1-3 mph early, becoming upslope 5-10 mph mid to late afternoon; ridge gusts 13 mph in aligned drainages.

STABILITY/INVERSION: Moderate to strong with smoke remaining in drainages near fire in morning. Inversion lifts to higher elevations by around 1400. Haines 3

WEATHER FOR SATURDAY NIGHT: Southwest to West winds 4 to 8 mph through dusk then diminishing and becoming light down drainage late overnight. Smoke and reduced air quality near fires due to developing inversion.

MINIMUM TEMPERATURES:

37 to 45° except elevated drainages 29-34°. **24 HR Trend:** Same.

MAXIMUM HUMIDITY:

37 to 43%; (upper drainages up to 70 %). **24 HR Trend:** Higher.

20-FOOT WIND: RIDGETOP – Southwest 5 to 9 mph early, becoming variable 4 to 6 mph overnight.

HIGH SLOPES/VALLEYS - Downslope/downcanyon 3 to 6 mph; (Huntington Lake; South Fork San Joaquin).

EXTENDED FORECAST: ...*Fire Weather Watch Monday*...

SUNDAY: Mild with increasing winds. Highs in the 50s. Min RH 22 to 30 %. Winds West to Northwest 10 to 15 mph .Haines 3-4. Turning much colder Sunday night. Lows in the 30s. **MONDAY:** Winds becoming Northeast and increasing to 35 to 45 mph upper ridges. Highs only near 40. Min RH 12 to 17 %

Key RAWs Locations:

Devils Postpile 5600'

Div M

High Sierra 7431'

current conditions

Div M Mt. Tom 9000'

Div M

Kaiser Ridge 8250'

Scan for RAWs WX

Sunset Saturday: 610 PM

Sunrise Sunday: 717 AM



FIRE BEHAVIOR FORECAST

FORECAST NUMBER: 47	TYPE OF FIRE: Wildfire
FIRE NAME: Creek Fire	OPERATIONAL PERIOD: Day Shift 10/24/20 0700-1900
DATE ISSUED: 10/23/2020	TIME ISSUED: 1830
UNIT: Sierra NF (CA-SNF-001391)	SIGNED: /s/ Patrick Doyle, FBAN-t; <i>Patrick Doyle</i> /s/ Patty Johnson, LTAN/SOPL

INPUTS

WEATHER SUMMARY: ****Slight cooling trend to begin****
 See Fire Weather Forecast for Specifics

FUELS:

Grass	GS1, GS2
Shrub	SH1
Timber	TU5, TL2, TL4, TL7
FDFM (1hr)	5
10-hr (%)	6
100-hr (%)	4
1000-hr(%)	6
Live Fuels	2/3 cured

Duff depth under pine is deep (12").

With the drought conditions, live fuels are available to burn

TOPOGRAPHY:

- Smoke inversion height (above sea level): ~7,000 ft.
- Elevation: 3,000-9,500. Higher elevations are starting to see cold nighttime temps. Nighttime humidity recoveries will begin to rise (35-40%).
- Slopes: 10%-50%. With general winds being low, wind direction and speed are being determined by terrain.

OUTPUTS

FIRE BEHAVIOR

GENERAL:

- Heavy fuels are very dry and can hold heat. Expect interior creeping and smoldering in the duff and heavy fuels.
- Fire behavior will moderate slightly with changing weather (cooler temperatures & strong cold front). However, fire will continue to smolder and creep; in areas of heavy fuel loadings near heat potential for single tree torch and spotting.
- Nighttime humidity will be high enough (above 40%) to dampen fire behavior slightly, taking longer to heat up during the day, and shortening the burn period.
- Smoke will continue to shelter the fire, slowing fire behavior below the inversion. Even the most active areas on DIV M.

Probability of Ignition (4-8,000') 40%/60% (Unshaded/Shaded)					
Spotting Potential: Minimal					
Spotting Distance: 10-20 mile (short range)					
Fuel Model	FL (Ft.)	ROS (Ch/Hr)	NFDR Index	Value	%
TU5	6-11	6-8	ERC	83	98th
TL7	2-4	6-12	BI	68	82th
SH1	2-4	4-8	High Sierra RAWWS (44520)		

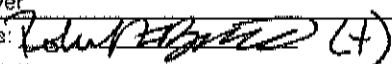
SPECIFIC:

- DIV M: Fire near Junction Bluffs backing towards the Middle Fork and Fish Creek. Backing South of Pincushion Peak. Surface spread, single tree torching, and short-range spotting as fire spreads Southeast, west of Lake Edison along the Onion Springs OHV road. Gap between the
- DIV J - Fire continues to move slowly up in the wilderness and rocks at higher elevations following green vegetation and timber stringers. In the Middle Fork of San Joaquin River near the Lion Fire there is potential for fire to spread east.
- DIVS E – DIVS I: Larger interior fuels and deep duff are continuing to consume and burn out. Expect to see this continue, with creeping/smoldering near interior islands of fuel or mosaics.
- DIVS (C–A, Z–N): No known activity activity near line, but with scattered heat throughout interior of divisions, creeping and smoldering where fuels exist. Potential torching and spotting if exposed to the sun.

SAFETY

When fire burns in timber fuels, stumps and logs that are consumed can become ash pits. An "invisible" hole is created from the once dense material becoming light ash. Stepping in these can be very hazardous.

ORGANIZATION ASSIGNMENT LIST (ICS 203)

1. Incident Name: Creek Fire		2. Operational Period: Date From: 10/24/2020 Time From: 0700		Date To: 10/24/2020 Time To: 1900	
3. Incident Commander(s) and Command Staff:			7. Operation Section:		
IC/UC's	Jerry McGowan		Operations	Bill Steers	
Deputy	Ken Kempter		Planning Ops	Chad Cook / Joe Appleton(t)	
Safety Officer	J Nickey, D. McKelvey, M Lipson(t), M Seymour (t)		Deputy Ops		
Information Officer	Allison / Wettstaed / Sweeny		Staging Area		
Liaison Officer	C. Prescott / R. Ekman		Branch	XIX	Travis Thane(t)
4. Agency/Organization Representatives:			Division/Group	E/F/G/H/J	Garrett Prater
Agency/Organization	Name		Division/Group	A/B/C	Kristen Allison
US Forest Service AA	Dean Gould		Division/Group		
USFS AREPS	Denise Toimle/Beth Ihle/Anne Casey		Branch	XXV / XXIX	Matt Dunham
CALFIRE AREP	Bill See		Division/Group	S/U/V/W/X/Z	Unstaffed
National Park Service	Dan Buckley		Division/Group		
USFS COVID Advisor	Anne Casey / Beth Ihle		Division/Group	Repair West	Ian Bianchi
MMU	Mike Van Loben Seles		Division/Group	Repair East	Shawn Murphy / Clint Wade
FKU	Mark Johnson		Branch	XX	Chris Childers
Cal OES	Javier Lara		Division/Group		
Madera Co. Sheriff	Patrick Majeski		Division/Group	N/P/R	Trevor Johnson / Brent Manfred(t)
Madera Co. Public Health	Marisol Torres		Division/Group	M	Victor Lefor
Fresno Co. Sherriff	Kathy Curtis		Division/Group		
CHP	Lt. Craig Hinch/ J. Williamson		Division/Group		
PG&E	Deron Mills/ C. Jordan		Division/Group		
Southern CA Edison	Scott Brown		Division/Group		
Caltrans	Adam Wimberly/ G. Pamplin		Branch	Contingency	
Tribal Liaison	Dirk Charley		Division/Group	Mammoth	Charles Kott
CCC	Miguel Diaz		Division/Group		
5. Planning Section:			Division/Group		
Chief	Christie Neill / Dena Chavez		Division/Group		
Deputy	A. French (t) <i>Virtual</i> / R. Burnside (t)		Division/Group		
Resource Unit	Danny Douglas		Division/Group		
Situation Unit	Robert Verdie / Bill Coates		Division/Group		
Documentation Unit	Ilda Gates		Division/Group		
Demobilization Unit	Brian Dameron		Division/Group		
GISS	Annette Navarre / Melane Hans		Division/Group		
FBAN/LTAN	Patrick Doyle(t) / Patricia Johnson		Division/Group		
IMET	John Pendergrast		Air Operations Branch		Director: Lindsay Alarcon
Resource Advisor	Garrett Dickman		Air Support Group Supervisor		Jeff Currier
ARA	Amber Ortega		Air Tactical Group Supervisor		
ITSS	Ulysses Huerta		Helibase Manager		
TNSP	Robert Rivelle <i>Virtual</i>				
6. Logistics Section					
Chief	Richie Davis / Dan Turner				
Supply Unit	Josh Ramsey		8. Finance/Administration Section:		
Facilities Unit	Nick Sablan		Chief		Larry Lee
Ground Support Unit	Dave Trussell		Time Unit		Teresa Reniff / Jennifer White
Communications Unit	Kody Kerwin		PRTC		Rene Smith
INCM	Scott LaRue		Comp/Claims Unit		Jodi Glover
Medical Unit	Brian Wisler / Kain Packwood		Cost Unit		Robert Taylor
Ordering Manager	L. Cayo / G. Smith / I. Kusumoto		EQTR		Jodi Glover
Prepared By: Name:	Christie Neill / Dena		Position/Title:	PSC	Signature: 
ICS 203	Date/Time:		10/23/2020 2300 hours		NIMS IAP

ASSIGNMENT LIST (ICS 204 WF)

CONTROLLED UNCLASSIFIED
INFORMATION/BASIC

1. Incident Name: <p style="text-align: center;">Creek Fire</p>	2. Operational Period: Date From: 10/24/20 Date To: 10/24/20 Time From: 0700 Time To: 1900	3. Branch Division <p style="text-align: center;">XIX E/F/G/I/J</p>
4. Operations Personnel:		Page 1 of 2

Operations Section Chief: Bill Steers	Night Ops:
Branch Director: Travis Thane(t)	Branch Safety:
Division/Group Supervisor: Garrett Prater	Air Attack:

5. Resources Assigned:	** Resources Below in Bold are 12 Hour **							
Resource Identifier	ALS	LWD	Leader	Personnel	Request #	Hours	Reporting Location	
HC2 North Pacific		10/31	Ronald Moccasin	20	C-400042	0700- 1900	ECCO Camp	
ENG6 Archer Mtn 16		11/1	Justus Barton	3	E-100227	0700- 1900	ECCO Camp	
WTS1 Glenn's Tens		11/1	Glenn Laquazila	1	E-200581	0700- 1900	ECCO Camp	
HEQB Hernandez		10/26	Alex Hernandez	1	O-200862	0700- 1900	ECCO Camp	
HEQB(t) Hannon		10/26	Ben Hannon	1	O-200861	0700- 1900	ECCO Camp	
FMOD Timbersmith #4		10/27	Cal Johnson	2	O-200046	0700- 1900	ECCO Camp	
FMOD Timbersmith #2		10/27	Matt Meckley	2	O-200335	0700- 1900	ECCO Camp	
FMOD Brothers Fire		10/24	Justin Offredi	2	O-400224	0700- 1900	ECCO Camp	
Fal1 Swedberg Contract Corp		10/26	Kyle Woolley	1	O-200591	0700- 1900	ECCO Camp	
FELB Kelly			Shane Kelly	1	O-200931	0700- 1900	ECCO Camp	
FELB (t) Schaeffer			Stanton Schaeffer	1	O-200932	0700- 1900	ECCO Camp	
CRW T2 Patrick Env.		10/24	William Murphy	20	C-200086	0700- 1900	ECCO Camp	
ENG3 SNF 11		10/24	Kurt Wadenius	5	E-200658	0700- 1900	ECCO Camp	
ENG3 SNF 351		10/24	Omar Arce	5	E-200659	0700- 1900	ECCO Camp	
ENG6 Brush 61 Moores		10/30	Jeffery Wyatt	3	E-200093	0700- 1900	ECCO Camp	
ENG6 Scholl Fire		11/2	Robert Maharrey	3	E-200386	0700- 1900	ECCO Camp	

6. Work Assignments:
DIVISION E/F/G
Task: Monitor and secure line where needed from Grizzly Road to Little Shuteye. Continue to secure and mop-up from 5S10 to Grizzly Road. Secure unburned islands that have spotting potential.
Purpose: Protect private inholdings, government buildings, and developments
End State: No further damage to private and government property.

8. Communications

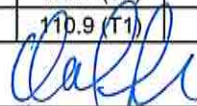
Name	Ch	Function	Rx Freq	Rx Tone	Tx Freq	Tx Tone	Notes
NIFC C47	5	COMMAND	172.0750	167.9 (T7)	162.2000	167.9 (T7)	Shuteye L.O.
NIFC T6	10	TACTICAL	166.7750	CSQ	166.7750	CSQ	
A/G TAC	14/18	Air to GROUND	166.6125	CSQ	166.6125	CSQ	
CALCORD	15/19	MEDICAL	156.0750	156.7 (T6)	156.0750	156.7 (T6)	
AIRGUARD	16/20	EMERGENCY	168.6250	CSQ	168.6250	110.9 (T1)	

9. Prepared by: Name: Danny Douglas RESL Signature:

ICS 204 Date/Time: 10/23/2020 2200 Personnel Count: 51

ASSIGNMENT LIST (ICS 204 WF)

CONTROLLED UNCLASSIFIED
INFORMATION/BASIC

1. Incident Name: <p style="text-align: center; font-weight: bold;">Creek Fire</p>		2. Operational Period: Date From: 10/24/20 Date To: 10/24/20 Time From: 0700 Time To: 1900				3. Branch <p style="text-align: center; font-weight: bold;">XIX</p>		Division <p style="text-align: center; font-weight: bold;">E/F/G/I/J</p>	
4. Operations Personnel:						Page 2 of 2			
Operations Section Chief: Bill Steers		Night Ops:							
Branch Director: Travis Thane(t)		Branch Safety:							
Division/Group Supervisor: Garrett Prater		Air Attack:							
5. Resources Assigned:		** Resources Below in Bold are 12 Hour **							
Resource Identifier	ALS	LWD	Leader	Personnel	Request #	Hours	Reporting Location		
CHIP Yveka Outlands		11/4	David Souza	1	E-400286	0700- 1900	ECCO Camp		
WTS2 Koehler & Son		11/5	Bill Koehler	1	E-200643	0700- 1900	ECCO Camp		
MAST Partridge 268		11/6	Michele Partridge	2	O-400268	0700- 1900	ECCO Camp		
EXCA Moosios		11/1	Christian Jandro	2	E-200449	0700- 1900	ECCO Camp		
EXCA Pat Denis Equipment		11/1	Pat Denis	2	E-200651	0700- 1900	ECCO Camp		
SKD1 Walsh 525 CAT Skidder		10/31	Russell Walsh	1	E-200521	0700- 1900	ECCO Camp		
SKD2 SouthFork Cutters		11/1	Jack Thornburg	3	E-200642	0700- 1900	ECCO Camp		
FMOD Swedberg Contracting #2		11/2	Brian Himes	2	O-200332	0700- 1900	ECCO Camp		
FMOD Shaulis Falling Module		10/30	Randy Shaulis	2	O-200700	0700- 1900	ECCO Camp		
TFLD Todd		11/2	Mark Todd	1	O-200912	0700- 1900	ECCO Camp		
HEQB Domini		11/2	Han Domini	1	O-200717	0700- 1900	ECCO Camp		
HEQB (t) McLean		10/26	Kelsey McLean	1	O-200863	0700- 1900	ECCO Camp		
READ Hart		10/25	Austin Hart	1	O-200853	0700- 1900	ECCO Camp		
REAF Takenaka			Kellen Takenaka	1		0700- 1900	ECCO Camp		
ARCH McConnell		10/30	Theo McConnell	1	O-200833	0700- 1900	ECCO Camp		
EMPF Lowry		10/26	Christopher Lowry	1	O-200748	0700- 1900	ECCO Camp		
EMTF Diaz		10/25	Ernesto Diaz	1	O-200745	0700- 1900	ECCO Camp		
AMBU American Ambu 87		11/13	Brian Henderson	2	E-200087	0700- 1900	ECCO Camp		
SOFR Maguire		11/1	Troy Maguire	1	O-100512	0700- 1900	ECCO Camp		
6. Work Assignments:									
DIVISION I:									
Task: Continue to hold and mop up control lines south of Red Top Mountain down to DP57. Continue snagging hazard trees in work areas and adjacent to the fire lines.									
Purpose: Limit fire spread to the north and west protecting values at risk in those areas.									
End State: Direct attack was successful stopping fire progression to the north and west.									
DIVISION J:									
Task: Monitor fire activity from the air and IR as smoke conditions allow. Identify opportunities to limit fire spread towards Red's Meadow and Devils Postpile. Protect private inholdings and government property where fire conditions allow and resources can safely engage.									
Purpose: Protect private inholdings with minimal fire damage and there is a high probability of success.									
End State: Reduce fire spread towards Yosemite National Park, Devils Postpile and Red's Meadow. Damage to private and government property is minimal.									
8. Communications									
Name	Ch	Function	Rx Freq	Rx Tone	Tx Freq	Tx Tone	Notes		
NIFC C47	5	COMMAND	172.0750	167.9 (T7)	162.2000	167.9 (T7)	Shuteye L.O.		
NIFC T6	10	TACTICAL	166.7750	CSQ	166.7750	CSQ			
A/G TAC	14/18	Air to GROUND	166.6125	CSQ	166.6125	CSQ			
CALCORD	15/19	MEDICAL	156.0750	156.7 (T6)	156.0750	156.7 (T6)			
AIRGUARD	16/20	EMERGENCY	168.6250	CSQ	168.6250	168.9 (T1)			
9. Prepared by: Name:		Danny Douglas			RESL		Signature: 		
ICS 204		Date/Time: 10/23/2020 2200				Personnel Count: 26			

ASSIGNMENT LIST (ICS 204 WF)

CONTROLLED UNCLASSIFIED
INFORMATION//BASIC

1. Incident Name: <p style="text-align: center; font-weight: bold;">Creek Fire</p>		2. Operational Period: Date From: 10/24/20 Date To: 10/24/20 Time From: 0700 Time To: 1900				3. Branch Division <p style="text-align: center; font-weight: bold;">XIX A/B/C</p>	
4. Operations Personnel:						Page 1 of 1	
Operations Section Chief: Bill Steers				Night Ops:			
Branch Director: Travis Thane(t)				Branch Safety:			
Division/Group Supervisor: Kristen Allison				Air Attack:			
5. Resources Assigned:		** Resources Below in Bold are 12 Hour **					
Resource Identifier	ALS	LWD	Leader	Personnel	Request #	Hours	Reporting Location
CRW2 Tri Cities		10/31	Martin Marales	20	C-200090	0700- 1900	ECCO Camp
SNF 52		11/4	Ritter Bethel	5	E-200679	07-00-1900	ECCO Camp
ENG3 SNF 313		11/4	Manual Rivera	5	E-200680	0700- 1900	ECCO Camp
ENG6 National WFC		10/24	Chuck Murphy	3	E-200090	0700- 1900	ECCO Camp
ENG6 GUA ENGINE - 681		10/24	Patrick Schmitz	3	E-200592	0700- 1900	ECCO Camp
EXCA LAP Contracting		11/8	Durrey Tatum	1	E-200652	0700- 1900	ECCO Camp
EXCA Dirt Works		10/26	Shawn Fox	2	E-200668	0700- 1900	ECCO Camp
EXCA Cutting Edge		11/5	Sergio Renteria	2	E-400186	0700- 1900	ECCO Camp
FMOD Underdog Timber		10/28	Richard Brown	2	O-200681	0700- 1900	ECCO Camp
HEQB Jacobsen		10/26	Julius Jacobsen	1	O-200859	0700- 1900	ECCO Camp
HEQB (t) Carr		11/4	Michael Carr	1	O-200929	0700- 1900	ECCO Camp
REAF Spence		10/24	Jason Spence	1	O-200815	0700- 1900	ECCO Camp
REAF Marley		10/24	Karen Marley	1	O-200844	0700- 1900	ECCO Camp
REAF Bishop		10/25	Amber Bishop	1	O-200816	0700- 1900	ECCO Camp
ARCH Snyder		10/25	Russell Snyder	1	O-200817	0700- 1900	ECCO Camp
EMPF Hinkle		11/4	Kevin Hinkle	1	O-400386	0700- 1900	ECCO Camp
AMBU American Ambu 88		11/13	David Henson	2	E-200088	0700- 1900	ECCO Camp
SOFR Reynolds		10/25	Kevin Reynolds	1	O-200779	0700- 1900	ECCO Camp
SOFR(t) Woods		10/25	Fredric Woods	1	O-200787	0700- 1900	ECCO Camp
6. Work Assignments:							
<p>Task: Mop up and patrol fire edge, mop up around Central Camp. Continue road improvement, snagging hazard trees in work areas and adjacent to the fire lines. Continue structural protection throughout division. Backhaul hose and trash. Identify suppression repair needs and accomplish objectives as established by suppression repair plan.</p> <p>Purpose: Protect life and property with minimal fire spread threatening North Fork and Bass Lake and other private inholdings. Keep roads open for fire traffic. Provide safe access for firefighting resources, cooperators, and the public.</p> <p>End State: Control lines are completed and no threat of fire spread. Bass Lake and adjacent communities are not impacted. No damage to private property. Major roads are clear of hazards. Firefighters, cooperators, and the public can travel major roads with minimal risk. Roads are kept open and access into the fire area is not compromised.</p>							
8. Communications							
Name	Ch	Function	Rx Freq	Rx Tone	Tx Freq	Tx Tone	Notes
NIFC C50	6	COMMAND	170.7625	167.9 (T7)	162.9375	167.9 (T7)	Goat Mtn
NIFC T5	9	TACTICAL	166.7250	CSQ	166.7250	CSQ	
A/G TAC	14/18	Air to GROUND	166.6125	CSQ	166.6125	CSQ	
CALCORD	15/19	MEDICAL	156.0750	156.7 (T6)	156.0750	156.7 (T6)	
AIRGUARD	16/20	EMERGENCY	168.6250	CSQ	168.6250	110.9 (T1)	
9. Prepared by: Name:		Danny Douglas		RESL		Signature: _____	
ICS 204		Date/Time: 10/23/2020 2200				Personnel Count: 46	

ASSIGNMENT LIST (ICS 204 WF)

CONTROLLED UNCLASSIFIED
INFORMATION//BASIC

1. Incident Name: <p style="text-align: center;">Creek Fire</p>	2. Operational Period: Date From: 10/24/20 Date To: 10/24/20 Time From: 0700 Time To: 1900	3. Branch Division XXV / XXIX Repair West
--	---	--

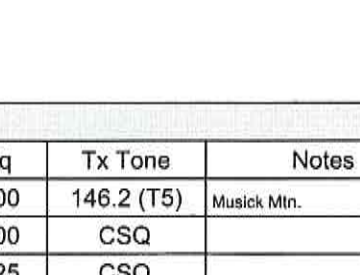
4. Operations Personnel:		Page 1 of 3
Operations Section Chief: Bill Steers	Night Ops:	
Branch Director: Matt Dunham	Branch Safety:	
Division/Group Supervisor: Ian Bianchi	Air Attack:	

5. Resources Assigned:	** Resources Below in Bold are 12 Hour **							
Resource Identifier	ALS	LWD	Leader	Personnel	Request #	Hours	Reporting Location	
HC2 Diamond Fire		10/30	Brad Emery	20	C-400040	0700- 1900	Auberry School	
DOZ A & CC Equipment			C. Avila	1	E-42	0700- 1900	Auberry School	
DOZ2 VC Construction			Vic Calachini	2	E-100134	0700- 1900	Auberry School	
DOZ2 Leslie Heavy Haul			A. Westland	2	E-400258	0700- 1900	Auberry School	
DOZ2 Leslie Heavy			Ross Martin	2	E-400257	0700- 1900	Auberry School	
MAST Leslie Heavy Haul 261			Leslie	1	E-400261	0700- 1900	Auberry School	
EXCA Kirkland			R. McCarthy	1	E-100536	0700- 1900	Auberry School	
EXCA Dusi Servizzi			M. Dusi	1	E-400246	0700- 1900	Auberry School	
EXCA Varian		11/4	Greg Varian	1	E-400293	0700- 1900	Auberry School	
WTT1 Boneso & Harms			Cody Hurst	2	E-100264	0700- 1900	Auberry School	
WT K.K. Water Service			Zack Shimkle	1	E-400058	0700- 1900	Auberry School	
WTT1 Foothill H2O			Thomas Kelly	2	E-400255	0700- 1900	Auberry School	
HEQB Day			Thorin Day	1	O-100792	0700- 1900	Auberry School	
HEQB Johnson			Eric Johnson	1	O-100793	0700- 1900	Auberry School	

6. Work Assignments:
 Repair control and contingency lines.
 Repair damaged roads.

7. Special Instructions:
 Backhaul all trash and excess supplies and equipment.

8. Communications							
Name	Ch	Function	Rx Freq	Rx Tone	Tx Freq	Tx Tone	Notes
NIFC C5	1	COMMAND	169.7500	146.2 (T5)	167.1000	146.2 (T5)	Musick Mtn.
NIFC T7	11	TACTICAL	168.2500	CSQ	168.2500	CSQ	
A/G TAC	14/18	Air to GROUND	166.6125	CSQ	166.6125	CSQ	
CALCORD	15/19	MEDICAL	156.0750	156.7 (T6)	156.0750	156.7 (T6)	
AIRGUARD	16/20	EMERGENCY	168.6250	CSQ	168.6250	110.9 (T1)	

9. Prepared by: Name: Danny Douglas RESL Signature: 

ICS 204 Date/Time: 10/23/2020 2200 Personnel Count: 38

ASSIGNMENT LIST (ICS 204 WF)

CONTROLLED UNCLASSIFIED
INFORMATION//BASIC

1. Incident Name: <p style="text-align: center;">Creek Fire</p>	2. Operational Period: Date From: 10/24/20 Date To: 10/24/20 Time From: 0700 Time To: 1900	3. Branch Division XXV / XXIX Repair West
--	---	--


4. Operations Personnel:		Page 2 of 3
Operations Section Chief: Bill Steers	Night Ops:	
Branch Director: Matt Dunham	Branch Safety:	
Division/Group Supervisor: Ian Bianchi	Air Attack:	

5. Resources Assigned:		** Resources Below in Bold are 12 Hour **					
Resource Identifier	ALS	LWD	Leader	Personnel	Request #	Hours	Reporting Location
DO22 Z & AG Solut			Doug Grove	2	E-400274	0700- 1900	Auberry School
DO22 2C Land and Timber			S. Chriss	2	E-100045	0700- 1900	Auberry School
DO22 Varian Enterprise #2		11/4	Tyler Amos	2	E-400193	0700- 1900	Auberry School
EXCA Leslie Haul 264			John Christ	1	E-400264	0700- 1900	Auberry School
GRD Pat Denis			S McDow	1	E-100494	0700- 1900	Auberry School
WTS2 Trahon		10/30	Robert Latham	1	E-400184	0700- 1900	Auberry School
WT Dahl & Sons			Mark Dahl	1	E-400278	0700- 1900	Auberry School
WTS1 Bartlet 218			G Bartlett	1	E-400218	0700- 1900	Auberry School
WTT2 Koehler 2			Troy Hovey	2	E-400279	0700- 1900	Auberry School
WT Grinnell			Peter Grinnell	2	E-400256	0700- 1900	Auberry School
WTT2 Quality Construction			P. Malan	1	E-400283	0700- 1900	Auberry School
WTS2 Pankey			Chad Pankey	2	E-100061	0700- 1900	Auberry School
WTS2 Dust Buster 505			Albert Angulo	1	E-200596	0700- 1900	Auberry School
CRW T2 FKU Fuels			Nick Reeder	10	C-100115	0700- 1900	
MAST Slowman 33				1	E-400262	0700- 1900	
MAST Boom Sloman				1	E-400263	0700- 1900	
FOBS Panzella			William Panzella	1	O-100782	0700- 1900	

6. Work Assignments:
 Repair control and contingency lines.
 Repair damaged roads.

7. Special Instructions:
 Backhaul all trash and excess supplies and equipment.

8. Communications							
Name	Ch	Function	Rx Freq	Rx Tone	Tx Freq	Tx Tone	Notes
NIFC C5	1	COMMAND	169.7500	146.2 (T5)	167.1000	146.2 (T5)	Musick Mtn.
NIFC T7	11	TACTICAL	168.2500	CSQ	168.2500	CSQ	
A/G TAC	14/18	Air to GROUND	166.6125	CSQ	166.6125	CSQ	
CALCORD	15/19	MEDICAL	156.0750	156.7 (T6)	156.0750	156.7 (T6)	
AIRGUARD	16/20	EMERGENCY	168.6250	CSQ	168.6250	110.9 (T1)	

9. Prepared by: Name: Danny Douglas RESL Signature: 

ICS 204 Date/Time: 10/23/2020 2200 Personnel Count: 32

ASSIGNMENT LIST (ICS 204 WF)

CONTROLLED UNCLASSIFIED
INFORMATION//BASIC

1. Incident Name: Creek Fire		2. Operational Period: Date From: 10/24/20 Date To: 10/24/20 Time From: 0700 Time To: 1900				3. Branch XXV / XXIX		Division Repair West	
4. Operations Personnel:						Page 3 of 3			
Operations Section Chief: Bill Steers		Night Ops:							
Branch Director: Matt Dunham		Branch Safety:							
Division/Group Supervisor: Ian Bianchi		Air Attack:							
5. Resources Assigned:		** Resources Below in Bold are 12 Hour **							
Resource Identifier	ALS	LWD	Leader	Personnel	Request #	Hours	Reporting Location		
MAST On Site			A. Fratarcangeli	1	E-400259	0700- 1900	Auberry School		
MAST Leslie Heavy Haul 260			Leslie Preston	2	E-400260	0700- 1900	Auberry School		
GRD Leslie Heavy Haul 200		10/26	Arlan Harris	1	E-400200	0700- 1900	Auberry School		
GRD Mustin			R. Mustin	1	E-400249	0700- 1900	Auberry School		
WTS1 Gill Cattle			R. Santana	1	E-100283	0700- 1900	Auberry School		
WTS2 G&J Truck Sales			Pedro Neri	1	E-200441	0700- 1900	Auberry School		
WTS2 MOORE'S EARTHMOVING		10/25	Zach Papadakis	1	E-200595	0700- 1900	Auberry School		
WTS1 Kritz Excavating			Brandon Vierra	2	E-400275	0700- 1900	Auberry School		
HEQB Houk			Michael Houk	1	O-400210	0700- 1900	Auberry School		
EMPF(t) Carey		10/24	Dean Carey	1	O-400217	0700- 1900	Auberry School		
SOFR Murphy		10/24	Tim Murphy	1	O-400243	0700- 1900	Auberry School		
SOFR Smith, J		11/6	Jason Smith	1	O-400444	0700- 1900	Auberry School		
6. Work Assignments: Repair control and contingency lines. Repair damaged roads.									
7. Special Instructions: Backhaul all trash and excess supplies and equipment.									
8. Communications									
Name	Ch	Function	Rx Freq	Rx Tone	Tx Freq	Tx Tone	Notes		
NIFC C5	1	COMMAND	169.7500	146.2 (T5)	167.1000	146.2 (T5)	Musick Mtn.		
NIFC T7	11	TACTICAL	168.2500	CSQ	168.2500	CSQ			
A/G TAC	14/18	Air to GROUND	166.6125	CSQ	166.6125	CSQ			
CALCORD	15/19	MEDICAL	156.0750	156.7 (T6)	156.0750	156.7 (T6)			
AIRGUARD	16/20	EMERGENCY	168.6250	CSQ	168.6250	110.9 (T1)			
9. Prepared by: Name:		Danny Douglas		RESL		Signature:			

ICS 204

Date/Time: 10/23/2020 2200

Personnel Count: 14

ASSIGNMENT LIST (ICS 204 WF)

CONTROLLED UNCLASSIFIED
INFORMATION//BASIC

1. Incident Name: <p style="text-align: center;">Creek Fire</p>	2. Operational Period: Date From: 10/24/20 Date To: 10/24/20 Time From: 0700 Time To: 1900	3. Branch Division XXV / XXIX Repair East
4. Operations Personnel:		Page 1 of 3

Operations Section Chief: Bill Steers	Night Ops:
Branch Director: Matt Dunham	Branch Safety:
Division/Group Supervisor: Shawn Murphy / Clint Wade	Air Attack:

5. Resources Assigned:	** Resources Below in Bold are 12 Hour **							
Resource Identifier	ALS	LWD	Leader	Personnel	Request #	Hours	Reporting Location	
DOZ2 SNF 8		10/25	Joshua Perkins	2	E-8	0700- 1900	Auberry School	
DOZ2 Varian Enterprise #1		11/4	Mike Everson	2	E-400191	0700- 1900	Auberry School	
DOZ2 Moore			D. Moore	1	E-400243	0700- 1900	Auberry School	
DOZ2 Ridge Logging 244			Ross Patton	1	E-400244	0700- 1900	Auberry School	
MAST Pat Denis			E. Butts	1	E-100339	0700- 1900	Auberry School	
MAST Rigde Logging 270		11/3		2	E-400270	0700- 1900	Auberry School	
MAST Rigde Logging 269		11/3		2	E-400269	0700- 1900	Auberry School	
EXCA J3 Contracting		10/26	Bill Grant	2	E-400185	0700- 1900	Auberry School	
EXCA Colleen Leslie 201		10/26	Brandon Strieb	1	E-400201	0700- 1900	Auberry School	
EXCA Leslie 222		10/30	Fred Caler	1	E-400222	0700- 1900	Auberry School	
EXCA Leslie Heavy Haul 223		10/30	Wade Brantly	1	E-400223	0700- 1900	Auberry School	
EXCA Ridge logging 247			D. Dial	1	E-400247	0700- 1900	Auberry School	
EXCA Ashbrook			Justin Cross	1	E-400248	0700- 1900	Auberry School	
SKD3 Leslie Heavy Haul 252			W. Brantley	1	E-400252	0700- 1900	China Peak	
SKD1 Ieslie Heavy Haul 250			Tim Reid	1	E-400250	0700- 1900	China Peak	
SKD1 Leslie Heavy 251			K. Barajas	1	E-400251	0700- 1900	China Peak	
FEL1 Feller Buncher Page			W. Page	1	E-400253	0700- 1900	Auberry School	
WTS2 Pat Denis Equipment			Pat Denis	1	E-143	0700- 1900	Auberry School	

6. Work Assignments:
 Repair control and contingency lines.
 Repair damaged roads.

7. Special Instructions:
 Backhaul all trash and excess supplies and equipment.

8. Communications							
Name	Ch	Function	Rx Freq	Rx Tone	Tx Freq	Tx Tone	Notes
NIFC C5	1	COMMAND	169.7500	146.2 (T5)	167.1000	146.2 (T5)	Musick Mtn.
NIFC T6	10	TACTICAL	166.7750	CSQ	166.7750	CSQ	
A/G TAC	14/18	Air to GROUND	166.6125	CSQ	166.6125	CSQ	
CALCORD	15/19	MEDICAL	156.0750	156.7 (T6)	156.0750	156.7 (T6)	
AIRGUARD	16/20	EMERGENCY	168.6250	CSQ	168.6250	110.9 (T1)	

9. Prepared by: Name:	Danny Douglas	RESL	Signature:
ICS 204	Date/Time: 10/23/2020 2200	Personnel Count: 23	

ASSIGNMENT LIST (ICS 204 WF)

CONTROLLED UNCLASSIFIED
INFORMATION//BASIC

1. Incident Name: <p style="text-align: center;">Creek Fire</p>	2. Operational Period: Date From: 10/24/20 Date To: 10/24/20 Time From: 0700 Time To: 1900	3. Branch Division XXV / XXIX Repair East
--	---	--

4. Operations Personnel:		Page 2 of 3
Operations Section Chief: Bill Steers	Night Ops:	
Branch Director: Matt Dunham	Branch Safety:	
Division/Group Supervisor: Shawn Murphy / Clint Wade	Air Attack:	

5. Resources Assigned:		** Resources Below in Bold are 12 Hour **					
Resource Identifier	ALS	LWD	Leader	Personnel	Request #	Hours	Reporting Location
WTS2 Bohna Ranch		10/30	Paul Luce	1	E-400053	0700- 1900	Auberry School
WTS2 Bay Area Water		10/26	Marcus Lemus	1	E-400196	0700- 1900	Auberry School
WTT1 Glen's Tens		10/29	David Sliger	1	E-400217	0700- 1900	Auberry School
WTT1 Arbor			John Millar	2	E-400254	0700- 1900	Auberry School
WTT2 Valley Farms		10/27	Dominick Ginn	2	E-400277	0700- 1900	Auberry School
WT Koehler 3			Vicki Bates	2	E-400280	0700- 1900	Auberry School
WTT2 Double R			Thomas Kelly	2	E-400281	0700- 1900	Auberry School
HEQB Lopez			Julian Lopez	1	O-100762	0700- 1900	Auberry School
HEQB BRIDGER		11/5	Chris Bridger	1	O-100794	0700-1900	China Peak
FMOD Sierra FST & Cnst		10/25	Logan Page	2	O-263	0700- 1900	China Peak
FMOD North Zone Fallers 1		10/24	Nealy Tom	2	O-277	0700- 1900	China Peak
FMOD Timbersmith 3		10/26	Ryan Deniz	2	O-200050	0700- 1900	China Peak
FMOD C&K Wildland Fire		10/28	Kevin Schuyler	2	O-200644	0700- 1900	China Peak
FMOD Timbersmmith 1		10/28	Tom Davis	2	O-400095	0700- 1900	China Peak
FMOD A&F Enterprises		10/24	Allan Hopkins	2	O-400223	0700- 1900	China Peak
FMOD Kyle Jackson Tree Service		10/25	Kyle Jackson	2	O-400225	0700- 1900	China Peak
FMOD The Tree Guys		10/24	Chase Bishop	2	O-400226	0700- 1900	China Peak
FAL1 Roberts		10/30	Daniel Roberts	1	O-71	0700- 1900	China Peak

6. Work Assignments:
 Repair control and contingency lines.
 Repair damaged roads.

7. Special Instructions:
 Backhaul all trash and excess supplies and equipment.

8. Communications							
Name	Ch	Function	Rx Freq	Rx Tone	Tx Freq	Tx Tone	Notes
NIFC C5	1	COMMAND	169.7500	146.2 (T5)	167.1000	146.2 (T5)	Musick Mtn.
NIFC T6	10	TACTICAL	166.7750	CSQ	166.7750	CSQ	
A/G TAC	14/18	Air to GROUND	166.6125	CSQ	166.6125	CSQ	
CALCORD	15/19	MEDICAL	156.0750	156.7 (T6)	156.0750	156.7 (T6)	
AIRGUARD	16/20	EMERGENCY	168.6250	CSQ	168.6250	110.9 (T1)	

9. Prepared by: Name: Danny Douglas RESL Signature:

ICS 204 Date/Time: 10/23/2020 2200 Personnel Count: 30

ASSIGNMENT LIST (ICS 204 WF)

CONTROLLED UNCLASSIFIED
INFORMATION/BASIC

1. Incident Name:	2. Operational Period:	3. Branch	Division
Creek Fire	Date From: 10/24/20 Date To: 10/24/20 Time From: 0700 Time To: 1900	XXV / XXIX	Repair East

Page 3 of 3

4. Operations Personnel:			
Operations Section Chief: Bill Steers	Night Ops:		
Branch Director: Matt Dunham	Branch Safety:		
Division/Group Supervisor: Shawn Murphy / Clint Wade	Air Attack:		

5. Resources Assigned:		** Resources Below in Bold are 12 Hour **					
Resource Identifier	ALS	LWD	Leader	Personnel	Request #	Hours	Reporting Location
THSP Sharp			Jerrold Sharp	1	O-100436	0700- 1900	Auberry School
THSP Breniman			Quaid Breniman	1	O-100627	0700- 1900	Auberry School
THSP Negrete			Mayra Negrete	1	O-100755	0700- 1900	Auberry School
FFT1 Roe, O		10/25	Olivia Roe	1	O-400096	0700- 1900	Auberry School
FFT1 Roe, J		10/27	Jeff Roe	1	O-400304	0700- 1900	Auberry School
EMTF Vasquez		11/4	Hector Vasquez	1	O-400388	0700- 1900	Auberry School
SOFR2 Smith, M		10/27	Mike Smith	1	O-200648	0700- 1900	Auberry School

6. Work Assignments:
 Repair control and contingency lines.
 Repair damaged roads.

7. Special Instructions:
 Backhaul all trash and excess supplies and equipment.

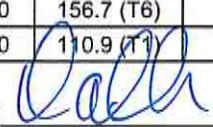
8. Communications							
Name	Ch	Function	Rx Freq	Rx Tone	Tx Freq	Tx Tone	Notes
NIFC C5	1	COMMAND	169.7500	146.2 (T5)	167.1000	146.2 (T5)	Musick Mtn.
NIFC T6	10	TACTICAL	166.7750	CSQ	166.7750	CSQ	
A/G TAC	14/18	Air to GROUND	166.6125	CSQ	166.6125	CSQ	
CALCORD	15/19	MEDICAL	156.0750	156.7 (T6)	156.0750	156.7 (T6)	
AIRGUARD	16/20	EMERGENCY	168.6250	CSQ	168.6250	110.9 (T1)	

9. Prepared by: Name: Danny Douglas RESL Signature:

ICS 204 Date/Time: 10/23/2020 2200 Personnel Count: 5

ASSIGNMENT LIST (ICS 204 WF)

CONTROLLED UNCLASSIFIED
INFORMATION/BASIC

1. Incident Name:		2. Operational Period:				3. Branch		Division
Creek Fire		Date From: 10/24/20	Date To: 10/24/20			XX		N/P/R
		Time From: 0700	Time To: 1900					
4. Operations Personnel:								Page 1 of 1
Operations Section Chief: Bill Steers		Night Ops:						
Branch Director: Chris Childers		Branch Safety:						
Division/Group Supervisor: Trevor Johnson / Brent Manfred(t)		Air Attack:						
5. Resources Assigned:								
** Resources Below in Bold are 12 Hour **								
Resource Identifier	ALS	LWD	Leader	Personnel	Request #	Hours	Reporting Location	
HC1 Sierra Hotshots		10/27	Alan Roby	21	C-400006	0700- 1900	China Peak	
HC21 Groveland 4		10/27	Tyler Rollinson	20	C-400034	0700- 1900	China Peak	
HC2 Ponderosa		11/1	Marcus Contrares	20	C-400041	0700- 1900	China Peak	
ENG3 SNF 331		10/25	Juan Ybarra	5	E-400208	0700- 1900	China Peak	
ENG3 SQF 21		11/1	Chris Morales	5	E-400234	0700- 1900	China Peak	
ENG3 Chumash 801		10/24	Gilbert Romero	5	E-400206	0700- 1900	China Peak	
ENG4 Birddog 427		11/3	Charles Harris	3	E-400150	0700- 1900	China Peak	
ENG6 SPA 2061		10/24	Sarah John	3	E-400013	0700- 1900	China Peak	
ENG6 Outback 5		10/29	Aiden Stewart	2	E-400084	0700- 1900	China Peak	
WTS2 Waterdogg 2		10/31	Matt Micheals	2	E-400197	0700- 1900	China Peak	
CHIP C&E Equipment		10/31	Eric Zesiger	2	E-400220	0700- 1900	China Peak	
CHIP Patrick Env.		10/26	Josh Childs	2	E-400288	0700- 1900	China Peak	
TFLD McAfee (t)		10/28	Alex McAfee	1	O-400315	0700- 1900	China Peak	
EMPF Wise		11/4	Sean Wise	1	O-400401	0700- 1900	China Peak	
EMTF Aguilar		11/4	Peter Aguilar	1	O-400402	0700- 1900	China Peak	
EMTF Orcutt		10/27	Joshua Orcutt	1	O-400273	0700- 1900	China Peak	
EMPF Suzuki		10/24	Takahiro Suzuki	1	O-400218	0700- 1900	China Peak	
EMPF Drake		11/4	Scott Drake	1	O-400384	0700- 1900	China Peak	
EMTF Morgan		11/4	Morgan	1	O-400387	0700- 1900	China Peak	
REMS 2		11/6	Matt Imbellomi	2	O-400399	0700- 1900	China Peak	
SOFR Woodman		10/25	Heather Woodman	1	O-200756	0700- 1900	China Peak	
6. Work Assignments:								
Secure fires edge around identified values at risk.								
Continue to mop up and patrol completed handline.								
Construct direct handline where needed.								
Identify and complete suppression repair as needed.								
7. Special Instructions:								
Backhaul all trash and excess supplies and equipment.								
Identify sensitive archeological and historical resource sites.								
Utilize MIST tactics when in the Wilderness areas.								
8. Communications								
Name	Ch	Function	Rx Freq	Rx Tone	Tx Freq	Tx Tone	Notes	
NIFC C32	2	COMMAND	171.0875	146.2 (T5)	164.0125	146.2 (T5)	White Bark	
NIFC T5	9	TACTICAL	166.7250	CSQ	166.7250	CSQ		
A/G TAC	14/18	Air to GROUND	166.6125	CSQ	166.6125	CSQ		
CALCORD	15/19	MEDICAL	156.0750	156.7 (T6)	156.0750	156.7 (T6)		
AIRGUARD	16/20	EMERGENCY	168.6250	CSQ	168.6250	110.9 (T1)		
9. Prepared by: Name:		Danny Douglas		RESL		Signature: 		
ICS 204		Date/Time: 10/23/2020 2200				Personnel Count: 95		

ASSIGNMENT LIST (ICS 204 WF)

CONTROLLED UNCLASSIFIED
INFORMATION//BASIC

1. Incident Name: <p style="text-align: center;">Creek Fire</p>	2. Operational Period: Date From: 10/24/20 Date To: 10/24/20 Time From: 0700 Time To: 1900	3. Branch Division <p style="text-align: center;">XX M</p>
--	---	--

4. Operations Personnel:		Page 1 of 1	Mike
Operations Section Chief: Bill Steers	Night Ops:		
Branch Director: Chris Childers	Branch Safety:		
Division/Group Supervisor: Victor Lefor	Air Attack:		

5. Resources Assigned:		** Resources Below in Bold are 12 Hour **					
Resource Identifier	ALS	LWD	Leader	Personnel	Request #	Hours	Reporting Location
CRW T2 Torres 17112		10/24	Augustin Ramirez	20	C-400013	0700- 1900	China Peak
CRW T2 Torres 17107		10/24	Oscar Miranda	20	C-400032	0700- 1900	China Peak
CRW T2 Cobras 6		10/30	Walter Allen Medina	21	C-400043	0700- 1900	China Peak
ENG3 HTF 312		10/27	Robert Willis	5	E-400215	0700- 1900	China Peak
ENG3 COF 474		10/28	Cory Ball	7	E-400216	0700- 1900	China Peak
ENG3 SNF 32		10/31	Carl Lemmons	5	E-400219	0700- 1900	China Peak
ENG3 SQF 46		11/1	Matthew Chambers	5	E-400236	0700- 1900	China Peak
ENG6 Chumash 802		10/25	Richard Garcia	3	E-400207	0700- 1900	China Peak
WTT1 OES 11		10/31	James Micheal	2	E-200638	0700- 1900	China Peak
WTS2 Hart 222		11/1	Jacob Tennyson	1	E-400057	0700- 1900	China Peak
WTS2 Hart 21		11/1	Robert McCLeve	1	E-400056	0700- 1900	China Peak
SKD3 Sierra		11/15	Logan Page	1	E-400095	0700- 1900	China Peak
CHIP Groundhog T1		10/24	Steve Murray	2	E-200648	0700- 1900	China Peak
REMS 1		11/4	Robert Brouwer	4	O-400380	0700- 1900	China Peak
SOFR Helm		10/25	Mak Helm	1	O-400201	0700- 1900	China Peak

6. Work Assignments:
 Continue structure defense measures and point protection.
 Conduct defensive firing operations around Vermillion Resort and Pack Station when necessary to protect values at risk.

7. Special Instructions:
 Backhaul all trash and excess supplies and equipment.
 Identify sensitive archeological and historical resource sites.
 Utilize MIST tactics when in the Wilderness areas.
 Bear sightings have been reported around Vermillion Spike. Secure all rations, do NOT leave food out. Report any issues to Line SOFR

8. Communications

Name	Ch	Function	Rx Freq	Rx Tone	Tx Freq	Tx Tone	Notes
NIFC C32	2	COMMAND	171.0875	146.2 (T5)	164.0125	146.2 (T5)	White Bark
NIFC T7	11	TACTICAL	168.2500	CSQ	168.2500	CSQ	
A/G TAC	14/18	Air to GROUND	166.6125	CSQ	166.6125	CSQ	
CALCORD	15/19	MEDICAL	156.0750	156.7 (T6)	156.0750	156.7 (T6)	
AIRGUARD	16/20	EMERGENCY	168.6250	CSQ	168.6250	110.9 (T1)	

9. Prepared by: Name: Danny Douglas RESL Signature:

ICS 204 Date/Time: 10/23/2020 2200 Personnel Count: 98

ASSIGNMENT LIST (ICS 204 WF)

CONTROLLED UNCLASSIFIED
INFORMATION/BASIC

1. Incident Name: <p style="text-align: center;">Creek Fire</p>	2. Operational Period: Date From: 10/24/20 Date To: 10/24/20 Time From: 0700 Time To: 1900	3. Branch Division Contingency Mammoth
--	---	--

4. Operations Personnel:		Page 1 of 1
Operations Section Chief: Bill Steers	Night Ops:	
Branch Director:	Branch Safety:	
Division/Group Supervisor: Charles Kott	Air Attack:	

5. Resources Assigned:		** Resources Below in Bold are 12 Hour **					
Resource Identifier	ALS	LWD	Leader	Personnel	Request #	Hours	Reporting Location
CRW T1 El Cariso IHC		10/27	Nick Mendoza	20	C-400010	0700- 1900	Mammoth

6. Work Assignments:
Scout contingency lines to protect the Devil's Postpile National Monument, the Mammoth Lakes Basin, and the town of Mammoth Lakes

7. Special Instructions:

8. Communications							
Name	Ch	Function	Rx Freq	Rx Tone	Tx Freq	Tx Tone	Notes
NIFC C41	3	COMMAND	173.0250	146.2 (T5)	165.3875	146.2 (T5)	Mammoth
NIFC T7	11	TACTICAL	168.2500	CSQ	168.2500	CSQ	
A/G TAC	14/18	Air to GROUND	166.6125	CSQ	166.6125	CSQ	
CALCORD	15/19	MEDICAL	156.0750	156.7 (T6)	156.0750	156.7 (T6)	
AIRGUARD	16/20	EMERGENCY	168.6250	CSQ	168.6250	110.9 (T1)	

9. Prepared by: Name:	Danny Douglas	RESL	Signature:
ICS 204	Date/Time: 10/23/2020 2200	Personnel Count: 20	

AIR OPERATIONS SUMMARY ICS-220 NORTH/SOUTH ZONES

Incident Name / Number Creek CA-SNF-001593	Sunrise 7:16	Startup 6:46	Cutoff 17:40	Sunset 18:10	Time Prepared 1800	Date Prepared October 23, 2020	Prepared By Lyndsay Alarcon																																																																																																												
Operational Period - Time 0700-2100	Operational Period - Date Saturday October 24, 2020																																																																																																																		
General Remarks, Safety Notes, Hazards, Air Operations Special Equipment, etc. TRACK ALL DIPSITE LOCATIONS / NUMBER OF DIPS / GALLONS TAKEN. TRACK ALL DROP LOCATIONS (DV) / NUMBER OF DROPS / GALLONS DROPPED All GPS DATA TO BE COLLECTED IN DEGREES, MINUTES, DECIMAL MINUTES, FORMAT. If Retardant / Foam / Agent is Dropped Within 300' of a waterway. Notify the AOB and Provide the Following Information: Lat / Long. Estimated Number of Gallons and a Map Detailing The Area.	Helibase Information Mammoth Latitude 37° 37.443 Longitude 118° 50.325		Shutdown 18:40		Rescue Ship Information Name: C407 Phone 657-464-7830 Make/Model: UH-1H Location: Visalia Request Procedures: Contact Incident Communications See Medicaat Plan For Additional Info																																																																																																														
FREQUENCIES <table border="1"> <thead> <tr> <th>Frequencies</th> <th>RX</th> <th>TX</th> <th>Tone</th> <th>AM / FM</th> <th>Position</th> <th>Name</th> <th>Phone</th> <th>Trainee</th> </tr> </thead> <tbody> <tr> <td>NIFC CMD 50</td> <td>170.7825</td> <td>167.9 (7)</td> <td>162.9375</td> <td>FM</td> <td>AOBD</td> <td>Lyndsay Alarcon</td> <td>(661) 565-6843</td> <td></td> </tr> <tr> <td>NIFC CMD 5</td> <td>169.7500</td> <td>146.2 (5)</td> <td>167.1000</td> <td>FM</td> <td></td> <td></td> <td></td> <td></td> </tr> <tr> <td>A/G CMD</td> <td>167.0625</td> <td>167.0625</td> <td>167.0625</td> <td>FM</td> <td>ASGS</td> <td>Jeff Currier</td> <td>(207) 441-2580</td> <td></td> </tr> <tr> <td>A/G TAC</td> <td>166.6125</td> <td>166.6125</td> <td>166.6125</td> <td>FM</td> <td></td> <td></td> <td></td> <td></td> </tr> <tr> <td>TFR</td> <td>119.0750</td> <td>119.0750</td> <td>119.0750</td> <td>AM</td> <td>ATGS</td> <td>Mark Bertucelli</td> <td>(559) 779-1108</td> <td></td> </tr> <tr> <td>AIR</td> <td>171.1125</td> <td>171.1125</td> <td>171.1125</td> <td>FM</td> <td>ATGSHLCO</td> <td>Dave Phillips</td> <td>(209) 770-0904</td> <td></td> </tr> <tr> <td>ROTOR</td> <td>132.5250</td> <td>132.5250</td> <td>132.5250</td> <td>AM</td> <td></td> <td></td> <td></td> <td></td> </tr> <tr> <td>TOLC</td> <td>119.7250</td> <td>119.7250</td> <td>119.7250</td> <td>AM</td> <td></td> <td></td> <td></td> <td></td> </tr> <tr> <td>DECK</td> <td>163.1000</td> <td>163.1000</td> <td>163.1000</td> <td>FM</td> <td>MAMMOTH HB</td> <td>Kevin Christy</td> <td>(310) 422-3832</td> <td>Rick Boman</td> </tr> <tr> <td>CALCORD - MEDICAL</td> <td>156.0750</td> <td>156.0750</td> <td>156.7 (6)</td> <td>FM</td> <td>AUBERRY HB</td> <td>Lee Stewart</td> <td>(775) 220-6364</td> <td></td> </tr> <tr> <td>AIRGUARD</td> <td>168.6250</td> <td>168.6250</td> <td>170.9 (1)</td> <td>FM</td> <td>BATTERSON</td> <td>Lucas Kopitzke</td> <td>(406) 396-2246</td> <td></td> </tr> </tbody> </table>								Frequencies	RX	TX	Tone	AM / FM	Position	Name	Phone	Trainee	NIFC CMD 50	170.7825	167.9 (7)	162.9375	FM	AOBD	Lyndsay Alarcon	(661) 565-6843		NIFC CMD 5	169.7500	146.2 (5)	167.1000	FM					A/G CMD	167.0625	167.0625	167.0625	FM	ASGS	Jeff Currier	(207) 441-2580		A/G TAC	166.6125	166.6125	166.6125	FM					TFR	119.0750	119.0750	119.0750	AM	ATGS	Mark Bertucelli	(559) 779-1108		AIR	171.1125	171.1125	171.1125	FM	ATGSHLCO	Dave Phillips	(209) 770-0904		ROTOR	132.5250	132.5250	132.5250	AM					TOLC	119.7250	119.7250	119.7250	AM					DECK	163.1000	163.1000	163.1000	FM	MAMMOTH HB	Kevin Christy	(310) 422-3832	Rick Boman	CALCORD - MEDICAL	156.0750	156.0750	156.7 (6)	FM	AUBERRY HB	Lee Stewart	(775) 220-6364		AIRGUARD	168.6250	168.6250	170.9 (1)	FM	BATTERSON	Lucas Kopitzke	(406) 396-2246	
Frequencies	RX	TX	Tone	AM / FM	Position	Name	Phone	Trainee																																																																																																											
NIFC CMD 50	170.7825	167.9 (7)	162.9375	FM	AOBD	Lyndsay Alarcon	(661) 565-6843																																																																																																												
NIFC CMD 5	169.7500	146.2 (5)	167.1000	FM																																																																																																															
A/G CMD	167.0625	167.0625	167.0625	FM	ASGS	Jeff Currier	(207) 441-2580																																																																																																												
A/G TAC	166.6125	166.6125	166.6125	FM																																																																																																															
TFR	119.0750	119.0750	119.0750	AM	ATGS	Mark Bertucelli	(559) 779-1108																																																																																																												
AIR	171.1125	171.1125	171.1125	FM	ATGSHLCO	Dave Phillips	(209) 770-0904																																																																																																												
ROTOR	132.5250	132.5250	132.5250	AM																																																																																																															
TOLC	119.7250	119.7250	119.7250	AM																																																																																																															
DECK	163.1000	163.1000	163.1000	FM	MAMMOTH HB	Kevin Christy	(310) 422-3832	Rick Boman																																																																																																											
CALCORD - MEDICAL	156.0750	156.0750	156.7 (6)	FM	AUBERRY HB	Lee Stewart	(775) 220-6364																																																																																																												
AIRGUARD	168.6250	168.6250	170.9 (1)	FM	BATTERSON	Lucas Kopitzke	(406) 396-2246																																																																																																												

HELICOPTERS				FIXED WING								
FAA #	Type	Make/Model	Helibase	Start	Available	Remarks	FAA #	Type	Make/Model	Base	Avail	Start
107Z (509)	2	Bell 209	Fresno	0700	0800	EU/HLCO/ATGS	AA15		AC 690B	Fresno	700	800
352SA	3	AS 350 B3	Auberry	0700	0800	EU/HLCO/A-28	FAA #		Make/Model	Base	Avail	Start
FHQB	2	205 A1++	Auberry	0700	0800	EU/Standard/Longline/A-	UR 31	3	DJI M800		700	800
312KA	1	K-1200	Auberry	0700	0800	CWIN/Longline/Busket/A-						
205TK (532)	2	205 A1++	Mammoth	0700	0800	EU/Standard/Longline/A-						
HT-721HT	1	CH-54B	Mammoth	0700	0800	EU/Fanned A-339						
46HX	3	Bell 407	Batterson	0700	0800	CWIN/HLCO/A-153						

REMARKS:

ALL COST SUMMARIES NEED TO BE EMAILED TO:
 2020.creek.fire@fire.ca.gov
 bay.salme@fire.ca.gov
 szulhops aviation@nmai.com
 windsay.alarcon@usda.gov
 jeff.currier@nmai.gov



SAFETY MESSAGE



Fire fighter safety comes first on every fire, every time

We are **ALL** accountable for **SAFE** behaviors
For Day Operations: **October 24, 2020**

INCIDENT: **Creek Fire**

Date Prepared: **October 23, 2020** TIME: **1600**

Major Hazards and Risks:

- **HAZARD TREE FELLING SAFETY TIPS**
- **MEDICAL INCIDENT REPORTING**

HAZARD TREE FELLING TIPS

Felling a hazard tree requires accurate risk assessment and complexity analysis, and demands the sawyer's full situational awareness. In all cases, remember to establish and maintain a secure felling area.

Do not bypass hazard trees without taking some action such as felling or establishing a No-Work-Zone.

Degree of hazard varies with tree size, species, and type/location of defect:

- Stem defects resulting in tree failure, i.e., collapse.
- Weakened sapwood resulting in loss of control when falling trees & limits solid wood for wedging.
- Overhead hazards, i.e., dead or hanging limbs falling on the faller.

Indicators of potential felling hazards:

Dead Limbs: Avoid working under overhead hazards.

Witches Broom: caused by mistletoe infection, limbs grow heavy (200+ lbs.)

Split Trunk: cracked trunk from frost, lightning, or wind.

Stem Damage: caused by windfall, scarring, fire, machine, etc...

Thick Sloughing Bark or Sloughing Sapwood: usually found on dead trees.

Butt and Stem Cankers: usually found on deciduous trees but can occur on Douglas fir and pine.

Fungal Fruiting Bodies or Conks: found on stems it may indicate massive interior rot 1-2 yards above and below conk.

Heavy Tree Lean: may be caused by damaged roots or lifting root mats, shallow or wet soils.

Root Condition: look for any ground cracks around the base of the tree, signs of decay or fungal conks on the roots.

Cat Face: look for solid wood to construct an effective undercut and back cut.

MEDICAL INCIDENT REPORTING

The Medical Incident Report (MIR) is not always tasked to the EMT or Paramedic in "Patient Care". The intent of the form is to:

1. Establish control of the incident whether routine or life-threatening by initiating a new Incident Command System,
 2. Have a systematic process for reporting medical incidents/injuries. **Medical Plan ICS 206 WF or IRPG Pg. 118, 119**
 3. Have any firefighter be able to fill it out and transmit with prior training and direction.
- Treat it like any incident. If the incident is overwhelming, ask for a more qualified IC to assume command and expand/contract the organization's size depending on the needs of the incident.
 - Fill this form out completely prior to transmitting the report to dispatch/communications. If there is a life threat, do not let documentation delay patient care.
 - When transmitting the report, state the number and title of each section and say "break" and pause between the sections
 - When using the MIR during a Multi-Casualty Incident (MCI) state the number injured and their severity (Section 3 ICS 206 WF)
 - Use the terms Paramedic or EMT with the provider's last name in "Patient Care." Do not use EMT to describe a Paramedic or the ambiguous term, "Medic." All those roles need to be clearly identified to understand the level of care and treatment the patient(s) will receive.
 - Enact more than one transport plan and clear more than one frequency if needed for Sections 5 and 6.
 - Always be ready for the first plan to fail and be flexible enough to move into an alternate plan. Use the acronym PACE (Primary, Alternate, Contingency, and Emergency) for planning purposes.

Thanks from your Safety Team!!



John Nickey SOF1, Matthew Lipson, SOF2(T), Mike Seymour SOF2(T)

Mike Seymour
SOF2T

INCIDENT ACTION PLAN RISK ASSESSMENT (ICS 215A)

1. Incident Name:		2. Incident Number:		3. Operational Period:		4. Location:				
Creek Fire		CA-SNF-001391		October 24, 2020		Clovis, CA/Sierra NF				
5. Prepared by: D. McKelvey/M.Lipson/J.Nickey/M.Seymour				7. Decision by: Jerry McGowan/Ken Kempler						
Identify Hazards		Assess Hazards		Develop Controls		Make Risk Decisions				
8. Task	9. Hazard	10. Hazard Probability	11. Severity	12. RAC	13. Identify hazard mitigations & controls	14. Hazard Probability	15. Severity	16. RAC	17. Task Necessary?	18. Hazard Control Assigned to:
Driving & Traffic	MVA - Other Vehicles	Likely	Critical	Extremely High	<ul style="list-style-type: none"> - Practice "Defensive Driving" techniques traveling on all roads and city streets. Travel on the "41 Road" and "61 Road" should be slow and cautious. - Use spotters & Hook horn to alert personnel when backing. - Follow Driving LCES (lights, Chock blocks, Emergency brake, Seat belts). - Always use headlights. - Yield to pedestrians and bicycles. - Observe posted speed limits. - Use the 3 second rule for following distance when driving. - Use chock blocks, turn wheels into hill. - Avoid distractions (texting, cell phones, radio). - Ensure that windshields are kept clean of dust and bugs. - Refer to "Smoke and Transportation Safety" IRPG Pg 31 - Refer to "Roadside Response Safety" IRPG Pg 26 	Likely	Critical	Extremely High	YES	Individuals
Fatigue & Over Exertion	Human Factors - Fatigue & Overexertion	Likely	Catastrophic	Extremely High	<ul style="list-style-type: none"> - Drink 1 quart of water each hour during and after work - Rotate crews out of smoky areas. - Set a reasonable work pace and allow adequate rest breaks. - Stagger work crews start time to limit fatigue. - Use buddy system to monitor personnel of heat related fatigue. - Follow work/rest guidelines. - Follow "Hazard Tree Safety" guidelines. IRPG page 22. - Post lookouts, or use a spotter in mop-up areas with personnel. - Don't park vehicles or take breaks in high concentrations of hazard trees. - Establish trigger points for disengagement during high wind events. - Hazard zone is a minimum of 2 1/2 tree heights. - Risk assessment before entering area and ask why. 	Likely	Critical	Extremely High	YES	Individuals
Hazard Trees	Hit by Tree/Snag/Branch	Likely	Catastrophic	Extremely High	<ul style="list-style-type: none"> - Refer to "Working with Heavy Equipment" IRPG Pg 86 - Ensure communications are established with operators. - Use hand signals if other communications are unavailable. - Maintain a 50-100' exclusion area around equipment and increase it to 1 1/2 times tree height when in limber. - Use a spotter when backing. - Avoid working below heavy equipment. - Do not work above or below personnel during self-mop-up ops. - Alert personnel of falling debris by yelling to affected individuals. - Position debris that could fall vertically on slope. - Wear eye protection. - Canvas crew members for those with allergic reactions to strings. - Ensure crew members have medication pens if needed. - Perform daily self inspection. - Use repellent as necessary. - Advanced Life Support, multi-dose eye and airway protection. - Keep affected area clean and bandaged. - Be careful when eating and/or drinking to avoid slings to mouth and throat. - Refer to "Smoke Hazards and Mitigation" IRPG Pg 30 - Use warning lights and provide traffic control on roadways during smoky and night operations. - Rotate crews out of smoky areas during firing and mop-up operations. - Consider hotels to ensure quality sleep out of smoke. - Contact Communications when firing operations are initiated. - Refer to Heat Related illness information. IRPG Pg 309 - Drink Fluids throughout operational period (6-8 quarts/day). - Maintain water/electrolyte ratio at 3 to 1. - Carry extra water on line and cache water at dump points. - Take frequent breaks, minimum of 10 minutes every hour. - Allow out of area resources time to acclimatize before expecting peak performance. - Recognize symptoms of HEAT RELATED ILLNESS. 	Likely	Critical	Extremely High	YES	Individuals
Heavy Equipment Operations	Equipment - Crushed by Heavy Equipment/Rollover	Likely	Catastrophic	Extremely High	<ul style="list-style-type: none"> - Refer to "Working with Heavy Equipment" IRPG Pg 86 - Ensure communications are established with operators. - Use hand signals if other communications are unavailable. - Maintain a 50-100' exclusion area around equipment and increase it to 1 1/2 times tree height when in limber. - Use a spotter when backing. - Avoid working below heavy equipment. - Do not work above or below personnel during self-mop-up ops. - Alert personnel of falling debris by yelling to affected individuals. - Position debris that could fall vertically on slope. - Wear eye protection. - Canvas crew members for those with allergic reactions to strings. - Ensure crew members have medication pens if needed. - Perform daily self inspection. - Use repellent as necessary. - Advanced Life Support, multi-dose eye and airway protection. - Keep affected area clean and bandaged. - Be careful when eating and/or drinking to avoid slings to mouth and throat. - Refer to "Smoke Hazards and Mitigation" IRPG Pg 30 - Use warning lights and provide traffic control on roadways during smoky and night operations. - Rotate crews out of smoky areas during firing and mop-up operations. - Consider hotels to ensure quality sleep out of smoke. - Contact Communications when firing operations are initiated. - Refer to Heat Related illness information. IRPG Pg 309 - Drink Fluids throughout operational period (6-8 quarts/day). - Maintain water/electrolyte ratio at 3 to 1. - Carry extra water on line and cache water at dump points. - Take frequent breaks, minimum of 10 minutes every hour. - Allow out of area resources time to acclimatize before expecting peak performance. - Recognize symptoms of HEAT RELATED ILLNESS. 	Likely	Critical	Extremely High	YES	Individuals
Mop-up/Repair	Burns - Ash Pit/Slump Holes	Likely	Critical	Extremely High	<ul style="list-style-type: none"> - Refer to "Working with Heavy Equipment" IRPG Pg 86 - Ensure communications are established with operators. - Use hand signals if other communications are unavailable. - Maintain a 50-100' exclusion area around equipment and increase it to 1 1/2 times tree height when in limber. - Use a spotter when backing. - Avoid working below heavy equipment. - Do not work above or below personnel during self-mop-up ops. - Alert personnel of falling debris by yelling to affected individuals. - Position debris that could fall vertically on slope. - Wear eye protection. - Canvas crew members for those with allergic reactions to strings. - Ensure crew members have medication pens if needed. - Perform daily self inspection. - Use repellent as necessary. - Advanced Life Support, multi-dose eye and airway protection. - Keep affected area clean and bandaged. - Be careful when eating and/or drinking to avoid slings to mouth and throat. - Refer to "Smoke Hazards and Mitigation" IRPG Pg 30 - Use warning lights and provide traffic control on roadways during smoky and night operations. - Rotate crews out of smoky areas during firing and mop-up operations. - Consider hotels to ensure quality sleep out of smoke. - Contact Communications when firing operations are initiated. - Refer to Heat Related illness information. IRPG Pg 309 - Drink Fluids throughout operational period (6-8 quarts/day). - Maintain water/electrolyte ratio at 3 to 1. - Carry extra water on line and cache water at dump points. - Take frequent breaks, minimum of 10 minutes every hour. - Allow out of area resources time to acclimatize before expecting peak performance. - Recognize symptoms of HEAT RELATED ILLNESS. 	Likely	Critical	Extremely High	YES	Individuals/CRWBIE NGB
Bees, Ticks, Mosquitoes	Allergic Reaction - Insects/Animals	Likely	Critical	Extremely High	<ul style="list-style-type: none"> - Refer to "Working with Heavy Equipment" IRPG Pg 86 - Ensure communications are established with operators. - Use hand signals if other communications are unavailable. - Maintain a 50-100' exclusion area around equipment and increase it to 1 1/2 times tree height when in limber. - Use a spotter when backing. - Avoid working below heavy equipment. - Do not work above or below personnel during self-mop-up ops. - Alert personnel of falling debris by yelling to affected individuals. - Position debris that could fall vertically on slope. - Wear eye protection. - Canvas crew members for those with allergic reactions to strings. - Ensure crew members have medication pens if needed. - Perform daily self inspection. - Use repellent as necessary. - Advanced Life Support, multi-dose eye and airway protection. - Keep affected area clean and bandaged. - Be careful when eating and/or drinking to avoid slings to mouth and throat. - Refer to "Smoke Hazards and Mitigation" IRPG Pg 30 - Use warning lights and provide traffic control on roadways during smoky and night operations. - Rotate crews out of smoky areas during firing and mop-up operations. - Consider hotels to ensure quality sleep out of smoke. - Contact Communications when firing operations are initiated. - Refer to Heat Related illness information. IRPG Pg 309 - Drink Fluids throughout operational period (6-8 quarts/day). - Maintain water/electrolyte ratio at 3 to 1. - Carry extra water on line and cache water at dump points. - Take frequent breaks, minimum of 10 minutes every hour. - Allow out of area resources time to acclimatize before expecting peak performance. - Recognize symptoms of HEAT RELATED ILLNESS. 	Likely	Moderate	High	YES	Individuals
Firefighter & Public Smoke Exposure	Smoke Inhalation	Likely	Critical	Extremely High	<ul style="list-style-type: none"> - Refer to "Working with Heavy Equipment" IRPG Pg 86 - Ensure communications are established with operators. - Use hand signals if other communications are unavailable. - Maintain a 50-100' exclusion area around equipment and increase it to 1 1/2 times tree height when in limber. - Use a spotter when backing. - Avoid working below heavy equipment. - Do not work above or below personnel during self-mop-up ops. - Alert personnel of falling debris by yelling to affected individuals. - Position debris that could fall vertically on slope. - Wear eye protection. - Canvas crew members for those with allergic reactions to strings. - Ensure crew members have medication pens if needed. - Perform daily self inspection. - Use repellent as necessary. - Advanced Life Support, multi-dose eye and airway protection. - Keep affected area clean and bandaged. - Be careful when eating and/or drinking to avoid slings to mouth and throat. - Refer to "Smoke Hazards and Mitigation" IRPG Pg 30 - Use warning lights and provide traffic control on roadways during smoky and night operations. - Rotate crews out of smoky areas during firing and mop-up operations. - Consider hotels to ensure quality sleep out of smoke. - Contact Communications when firing operations are initiated. - Refer to Heat Related illness information. IRPG Pg 309 - Drink Fluids throughout operational period (6-8 quarts/day). - Maintain water/electrolyte ratio at 3 to 1. - Carry extra water on line and cache water at dump points. - Take frequent breaks, minimum of 10 minutes every hour. - Allow out of area resources time to acclimatize before expecting peak performance. - Recognize symptoms of HEAT RELATED ILLNESS. 	Likely	Moderate	High	YES	Individuals
Heat Related Illness (HRI) & Dehydration	Medical - Heat Related Illness	Likely	Critical	Extremely High	<ul style="list-style-type: none"> - Refer to "Working with Heavy Equipment" IRPG Pg 86 - Ensure communications are established with operators. - Use hand signals if other communications are unavailable. - Maintain a 50-100' exclusion area around equipment and increase it to 1 1/2 times tree height when in limber. - Use a spotter when backing. - Avoid working below heavy equipment. - Do not work above or below personnel during self-mop-up ops. - Alert personnel of falling debris by yelling to affected individuals. - Position debris that could fall vertically on slope. - Wear eye protection. - Canvas crew members for those with allergic reactions to strings. - Ensure crew members have medication pens if needed. - Perform daily self inspection. - Use repellent as necessary. - Advanced Life Support, multi-dose eye and airway protection. - Keep affected area clean and bandaged. - Be careful when eating and/or drinking to avoid slings to mouth and throat. - Refer to "Smoke Hazards and Mitigation" IRPG Pg 30 - Use warning lights and provide traffic control on roadways during smoky and night operations. - Rotate crews out of smoky areas during firing and mop-up operations. - Consider hotels to ensure quality sleep out of smoke. - Contact Communications when firing operations are initiated. - Refer to Heat Related illness information. IRPG Pg 309 - Drink Fluids throughout operational period (6-8 quarts/day). - Maintain water/electrolyte ratio at 3 to 1. - Carry extra water on line and cache water at dump points. - Take frequent breaks, minimum of 10 minutes every hour. - Allow out of area resources time to acclimatize before expecting peak performance. - Recognize symptoms of HEAT RELATED ILLNESS. 	Likely	Moderate	High	YES	Individuals/CRWB

INCIDENT ACTION PLAN RISK ASSESSMENT (ICS 215A)

Incident Camp	Camp Hazards	Likely	Critical	Extremely High	<ul style="list-style-type: none"> - Be aware of camp medical and evacuation plans - Wear closed toe footwear with acceptable support. Be aware of potential for uneven footing and loose rocks. - Loading and carrying: lift with legs, not back. Use car/dolly if needed. - Drive slowly. Max 5 MPH. Signal watch for pedestrian traffic. - When Backing: Use a Spotter. - Use check blocks, especially if parked on uneven ground. - Guy ropes and stakes: flag / mark with fluorescent lighting. - Be Aware of "Mud Makers" in camp and sleeping area. - Wear Masks, Distances, Wash hands after toilet use and prior to eating - Be Aware there may be Snakes, Insects and Poison Oak in camp. - Alcohol and / or Recreational drugs are prohibited in camp. - Refer to "Fireline Location" considerations, IRPG Pg 84 - Do not work directly above or below personnel during firing and mop-up operations. - Watch for fading and rolling debris on steep slopes. - Alert crew personnel of rolling debris by yelling to affected individuals - Position debris that could not vertically on slope. - Avoid stepping over debris that could not be walked around object. - Avoid radiant heat by wearing appropriate PPE correctly. - Use correct tool for task assigned. - Flag/locate all HAZMAT & alert all personnel working in Division. - Ensure LCES is in place at all times. - Ensure equipment is inspected and safe to use. - Restrict UTV's to a max width of 50" on ATV trails due to width and severe out stepped conditions. - Ensure operator is trained and certified to operate. - Ensure operator has proper PPE according to the Redboots/ RMA. - Question if it is mission critical 	Likely	Moderate	High	YES	Individuals/CRW/B/E NGB
Fireline Hazards	Hit by Rolling Material in Sleep Terrain	Likely	Moderate	High	<ul style="list-style-type: none"> - Be sure to know what frequency your division is on - Know your commands / tone frequency - Check the 205 communication plan - Stay home if exposed or feeling it, inform supervisors if feeling it or possible exposure. - Maintain 6 feet separation, utilize facemask if unable to maintain social distancing. - Refrain from touching surfaces you haven't disinfectd - Ensure positive communication with all air resources - Don't plan on air resources for medical transport or resupply - Follow "Aviation Watch-Out Situations" IRPG Pg 46 - Refer to "Directing Bucket or Retardant Drops IRPG Pg 58 - Refer to "Aerial Retardant Safety" IRPG Pg 57 - Refer to "Aircraft Mishap Response Procedure" IRPG Pg 62 - Identify and Avoid hazard areas. - Lander routinely. - Shower frequently. - Do not work above/below personnel during rehab/mop-up ops - Alert crew personnel of rolling debris by yelling to affected people. - Position debris that could fall vertically on slope. - Wear eye protection. 	Likely	Moderate	High	YES	Individuals/CRW/B/E NGB
ATV/UTV Use	Equipment - ATV/UTV Rollover	Likely	Moderate	High	<ul style="list-style-type: none"> - Ensure equipment is inspected and safe to use. - Restrict UTV's to a max width of 50" on ATV trails due to width and severe out stepped conditions. - Ensure operator is trained and certified to operate. - Ensure operator has proper PPE according to the Redboots/ RMA. - Question if it is mission critical 	Likely	Moderate	High	YES	Individuals/CRW/B
Communications	SNF Communications	Possible	Critical	High	<ul style="list-style-type: none"> - Be sure to know what frequency your division is on - Know your commands / tone frequency - Check the 205 communication plan 	Possible	Moderate	Moderate	YES	Individuals
All Personnel	COVID-19 Employee Hazard Reduction	Possible	Critical	High	<ul style="list-style-type: none"> - Follow basic hygiene, handwashing for 20 seconds, Clean PPE. - Stay home if exposed or feeling it, inform supervisors if feeling it or possible exposure. - Maintain 6 feet separation, utilize facemask if unable to maintain social distancing. - Refrain from touching surfaces you haven't disinfectd 	Rare	Critical	Moderate	YES	CRW/B/E/NGB
Air Operations	Aircraft Mishap - General	Unlikely	Critical	Moderate	<ul style="list-style-type: none"> - Ensure positive communication with all air resources - Don't plan on air resources for medical transport or resupply - Follow "Aviation Watch-Out Situations" IRPG Pg 46 - Refer to "Directing Bucket or Retardant Drops IRPG Pg 58 - Refer to "Aerial Retardant Safety" IRPG Pg 57 - Refer to "Aircraft Mishap Response Procedure" IRPG Pg 62 - Identify and Avoid hazard areas. - Lander routinely. - Shower frequently. - Do not work above/below personnel during rehab/mop-up ops - Alert crew personnel of rolling debris by yelling to affected people. - Position debris that could fall vertically on slope. - Wear eye protection. 	Rare	Critical	Moderate	YES	Individuals
Poisonous Plants	Allergic Reaction - Plants	Possible	Moderate	Moderate	<ul style="list-style-type: none"> - Identify and Avoid hazard areas. - Lander routinely. - Shower frequently. - Do not work above/below personnel during rehab/mop-up ops - Alert crew personnel of rolling debris by yelling to affected people. - Position debris that could fall vertically on slope. - Wear eye protection. 	Possible	Negligible	Critical	YES	Individuals
Suppression Repair - Hand tools/Saws	Equipment - Snagged/kick back by Chipper	Possible	Moderate	Moderate	<ul style="list-style-type: none"> - Do not work above/below personnel during rehab/mop-up ops - Alert crew personnel of rolling debris by yelling to affected people. - Position debris that could fall vertically on slope. - Wear eye protection. 	Unlikely	Moderate	Moderate	YES	Individuals/CRW/B
Wildlife	Hostile Wildlife	Unlikely	Moderate	Critical	<ul style="list-style-type: none"> - Keep spike camp and Chop Points clean of trash - Fire has displaced wildlife - Make noise to scare off bears - Mountain Lion sighting make yourself large and make noise, don't run 	Unlikely	Moderate	Moderate	YES	Individuals

INCIDENT RADIO COMMUNICATIONS		Incident Name (Version 5)		Operational Period Date/Time	
PLAN (ICS 205)		CREEK		10/23/2020 1830	
Channel Name/Trunked Radio System Talkgroup		Assignment		Date/Time Prepared	
Function		RX Freq N or W		TX Freq N or W	
Zn Ch		RX Tone/NAC		TX Tone/NAC	
Mode		Dev		Pwr	
Remarks		A, D or M			

Utilization of any frequency other than those listed on this form are prohibited, subject to fines by the FCC and demobilization from the incident.						
Zn Ch	Channel Name/Trunked Radio System Talkgroup	Assignment	RX Freq N or W	RX Tone/NAC	TX Freq N or W	TX Tone/NAC
1	COMMAND NIFC C5	ALL DIVISIONS	169.7500	Tone 5 146.2	167.1000	Tone 5 146.2
2	COMMAND NIFC C32	ALL DIVISIONS	171.0875	Tone 5 146.2	164.0125	Tone 5 146.2
3	COMMAND NIFC C41	ALL DIVISIONS	173.0250	Tone 5 146.2	165.3875	Tone 5 146.2
4	COMMAND NIFC C46	ALL DIVISIONS	172.0875	Tone 5 146.2	162.1750	Tone 5 146.2
5	COMMAND NIFC C47	ALL DIVISIONS	172.0750	Tone 7 167.9	162.2000	Tone 7 167.9
6	COMMAND NIFC C50	ALL DIVISIONS	170.7625	Tone 7 167.9	162.9375	Tone 7 167.9
7	COMMAND NIFC C64	ALL DIVISIONS	172.1000	Tone 5 146.2	163.3875	Tone 5 146.2
8	COMMAND NIFC C80	ALL DIVISIONS	169.9625	Tone 7 167.9	165.0500	Tone 7 167.9
9	TACTICAL NIFC T-5	Div. A/B/C and Div. N/P/R	166.7250	CSQ	166.7250	CSQ
10	TACTICAL NIFC T-6	Div. E/F/G/H/J, REPAIR EAST and Div. S/U/V/W/X/Z	166.7750	CSQ	166.7750	CSQ
11	TACTICAL NIFC T-7	REPAIR WEST, Div. M and MAMMOTH CONT.	168.2500	CSQ	168.2500	CSQ
12	COMMAND SNF FIRE	BACK UP CMD	172.2250	CSQ	164.7875	Tone 5 146.2
13	Air-to-Ground A/G CMD	COMMAND	167.0625	CSQ	167.0625	CSQ
14/18	Air-to-Ground A/G TAC	TACTICAL	166.6125	CSQ	166.6125	CSQ
15/19	TACTICAL CALCORD	MEDICAL TAC	156.0750	Tone 6 156.7	156.0750	Tone 6 156.7
16/20	EMERGENCY GUARD V5	EMERGENCY	168.6250	CSQ	168.6250	Tone 1 110.9

Prepared By (Communications Unit Leader)	Sierra National Forest
Kody Kerwin Routine (916) 591-9026 and EMERGENCY (925) 532-5464	County: LAC State: CA Latitude: " N Longitude: W

The convention calls for frequency lists to show four digits after the decimal place (five digits for 700 MHz frequencies). The letter "U", "N", or "W" in the deviation (Dev) column reflects whether the frequency is ultranarrow (6.25 kHz), narrow (12.5 kHz) or wide band (25 kHz). Mode refers to either "A" indicating Analog, "D" indicating Digital (e.g. Project 25) or "M" indicating Mixed Mode. All channels are shown as if programmed in a control station, mobile or portable radio. Repeaters (and depending on use, base stations) must be programmed with the Rx and Tx reversed.

Demob

Come see us or
call 916-591-9008
Check the QR code on the
IAP cover

Logistics

China Peak Base Camp

Feeding	0600-0900
Dinner	1700-2100
Sack lunch distribution	0600-2200
Fuel Tender (Red Triangle):	0630-2100
Frontline Medical:	24 hours

Sierra Camp

Breakfast delivered	0600
Dinner	1800
Sack lunch distribution	0600-0800
Showers	0500-2300

ARE YOU A TRAINEE? or Training Someone?

Be sure to use the QR code on the IAP
cover to register.

Once registered, you will receive text
and email updates.

Robert Rivelle 707-498-1761
Robert_rivelle@nps.gov

\$\$\$ Finance \$\$\$

You may either turn in your CTR or shift
ticket hardcopy or take a picture of in
and send it electronically to this email
address.

2020.creek.finance@firenet.gov

Please turn in your CTR or shift ticket at
least every other day and make sure it
is legible, includes your resource order
number and is signed by your
supervisor.

Call Clovis ICP at 951-205-3819 if you
have questions.



Human Resources Message

LISTEN

A wise man once told me that we have 2 ears
and 1 mouth for a reason - to listen twice as
much as we speak; and if you notice, our ears
always stay open, while our mouths have a
hinge so it can be closed.

Also, note that "listen" and "silent" are spelled
with the same letters. Is that just a coincidence,
or is it that you need to be silent in order to be
able to really listen? Check that out and think
about it!

Let's try really listening to each other more and
see if we can resolve our issues and/or concerns
that we may have much faster.

Tony Torres - HRSP
505-239-0041 or Anthony.torres@usda.gov

DAILY COVID QUESTIONS:

Have all employees apply this self-assessment prior to entering any work location every day.

Can you answer "YES" to either question? If so, report to the Medical Unit immediately:

- 1) In the last 14 days have you had a fever or chills, shortness of breath, body-aches, coughing or new loss of taste or smell (not attributable to something else, e.g. allergies)?
- 2) In the last 14 days have you had close contact with someone who may have COVID-19? This includes anyone with a positive COVID-19 test or who has COVID-19 symptoms.

- | | | |
|-----------------------------------|------------------------|-------------------------|
| • Cough | • Muscle or Body Aches | • Fatigue |
| • Shortness of breath | • Sore Throat | • Nausea/Vomiting |
| • Fever (100.4 or more) or Chills | • Cough | • Diarrhea |
| • New loss of Taste or Smell | • Headache | • Congestion/Runny Nose |

Persons who are displaying symptoms that the medical unit feels are suspicious for COVID-19 will be tested. This will be coordinated by the incident COVID taskforce and the local public health department.

If a person has mild symptoms that might be caused by other conditions (like heat illness, dehydration, etc.), the medical unit may isolate, treat and observe for up to 24 hrs. to determine if COVID testing is needed.

DMOB process for the Creek Fire

South Zone

All Resources, including CalFire Contractors (Except Cal Fire) will report to DMOB at China Peak at their assigned times to start the DMOB Process.

Resources requiring a OES 42 for time keeping will have to report to Clovis ICP to get the OES 42 signed by the OES Rep.

CalFire Resources will DMOB at Auberry Elementary School.

- Contact Matt Dunham (559) 281-4312 to start the DMOB process
- Resources will have to have a Mechanical Inspection and we wash, contact Billy Greenwood (559) 218-4330
- All Cal Fire resources (including contract) need to call CalFire Finance before leaving incident (925) 532-5446
- All CalFire resources (including contract) need to call FKU expanded (559) 294-6818 to be released from the incident
- FKU expanded will notify Creek DMOB (916) 591-9008 to notify which resources have been released

North Zone

All resources will report to Episcopal Conference Center, Oakhurst to DMOB and go through Weed Wash, Ground Support, Supply, Comms and Finance. When complete use the QR code located at finance to complete the DMOB process in order to be released from incident.

Resources requiring a OES 42 for time keeping will have to report to Clovis ICP to get the OES 42 signed by the OES Rep.

The DMOB list can be found by scanning the QR Code on the cover of the IAP and clicking on the DMOB list Button.

Any questions call DMOB at (916) 591-9008

CREEK FIRE TENTATIVE DEMOB REPORT

10/24/2020

Time	Req #	RESOURCE NAME	ITEM CODE	LOCATION
0700	C-400031	GOLDEN EAGLES IHC	HC1	SOUTH
0730	C-400033	1ST CHOICE 17093	HC2	SOUTH
0800	C-400038	VISTA 1	CC	SOUTH
0700	E-200656	BLM 3130	ENG3	NORTH
0730	E-400133	ASHBROOK 2	WTS2	SOUTH
0700	O-200707	BREEDLOVE, SHARNIKA	SEC1	NORTH
0715	O-200738	COPPO, JOSEPH	EMTF	NORTH
0730	O-200795	GARLAPOW, ROSS MICHAEL	TFLD	NORTH
0745	O-200824	MCQUAY, SIERRA ALIZABETH	BCMG	NORTH
0800	O-200835	BERNACCHI, TYLER DANTE	SEC1	NORTH
0815	O-200836	TURNER, JONPAUL NICHOLAS	SEC1	NORTH
0830	O-200854	MATTOS, BRIAN	FORS	NORTH
0700	O-200410	A&E TREE REMOVAL	FMOD	SOUTH
0715	O-400247	RODRIGUEZ, ISAAC	EMPF	SOUTH
0730	O-400248	KRIDER, KEITH	EMTF	SOUTH
1800	O-400079	PENDERGRAST, JOHN CHARLES	IMET	ICP

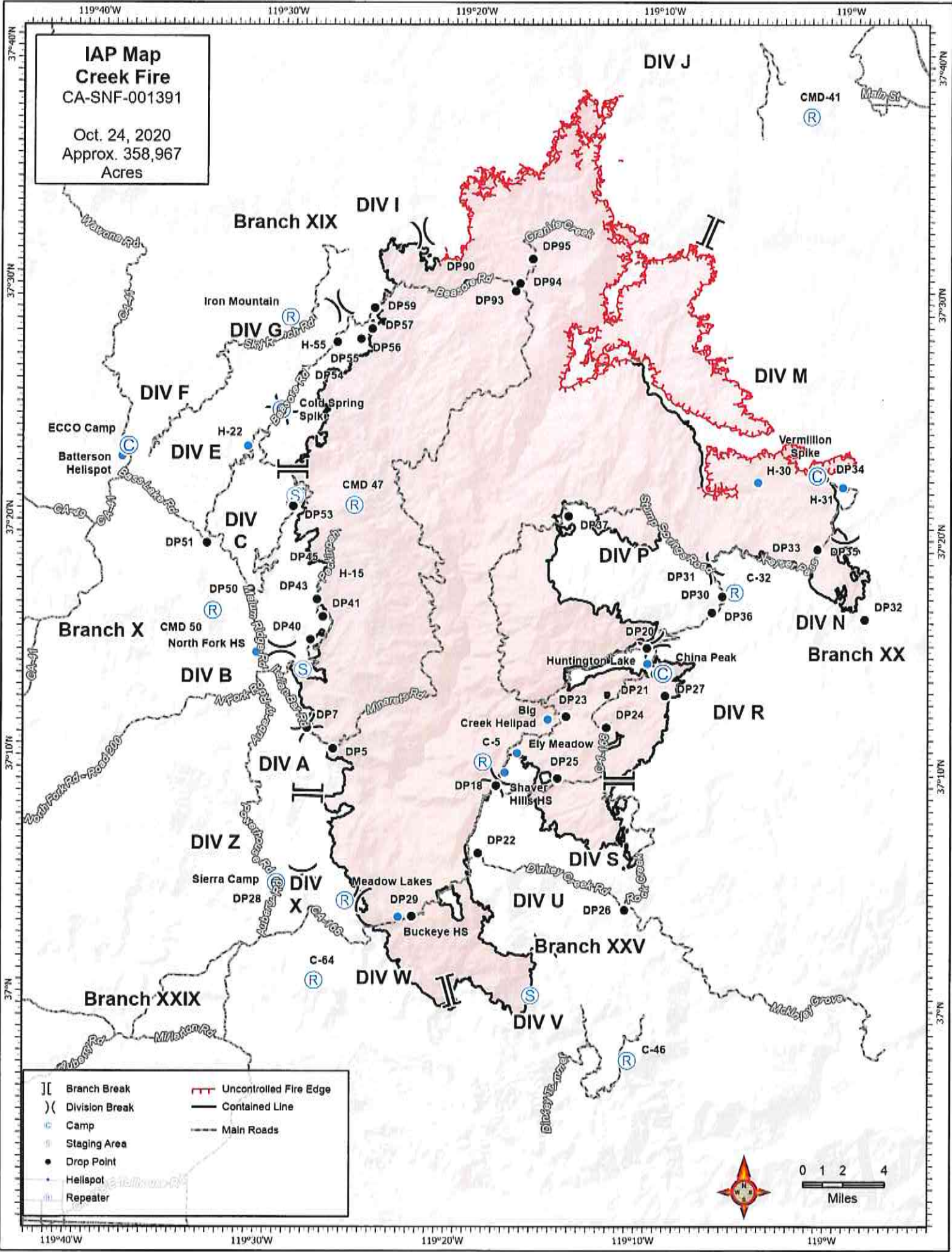
10/25/2020

Time	Req #	RESOURCE NAME	ITEM CODE	LOCATION
TBD	C-200086	PATRICK ENV.	HC2	NORTH
TBD	C-400013	TORRES 17112	HC2	SOUTH
TBD	C-400032	TORRES 17107	HC2	SOUTH
TBD	E-200090	NATIONAL WFC	ENG6	NORTH
TBD	E-200592	GUA ENGINE - 681	ENG6	NORTH
TBD	E-200649	THE TREE GUYS T2 #2	CHIP	NORTH
TBD	E-200658	SNF 11	ENG3	NORTH
TBD	E-200659	SNF 351	ENG3	NORTH
TBD	E-200648	GROUNDHOG T1	CHIP	SOUTH
TBD	E-400013	SPA 2061	ENG6	SOUTH
TBD	E-400191	VARIAN ENTERPRISES #1	DOZZ	SOUTH
TBD	E-400193	VARIAN ENTERPRISES #2	DOZZ	SOUTH
TBD	E-400206	CHUMASH 801	ENG3	SOUTH
TBD	O-200779	REYNOLDS, KEVIN J	SOFR	NORTH
TBD	O-200815	SPENCE, JASON J	REAF	NORTH
TBD	O-200834	GERALD, KENNETH D	SEC1	NORTH
TBD	O-200843	SANDERS, LOGAN	DIVS	NORTH
TBD	O-200844	MARLEY, KAREN	REAF	NORTH
TBD	O-200860	BOMAN, KARL	HEBM	SOUTH
TBD	O-400006	GJERSVOLD, ADAM	BCMG	SOUTH
TBD	O-400087	WU, DAN	BCMG	SOUTH
TBD	O-400169	ICE, MICHAEL J	SEC1	SOUTH
TBD	O-400217	CAREY, DEAN	EMPF	SOUTH
TBD	O-400218	SUZUKI, TAKAHIRO	EMPF	SOUTH
TBD	O-400223	A&F ENTERPRISES	FMOD	SOUTH
TBD	O-400224	FMOD BROTHERS FIRE	FMOD	SOUTH
TBD	O-400226	THE TREE GUYS	FMOD	SOUTH
TBD	O-400232	STANLEY, CHRISTOPHER	RCDM	SOUTH

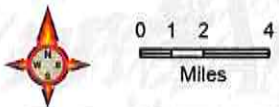
NOTE: If you believe your demob date is wrong, please contact DMOB ASAP by calling (916) 591-9008

IAP Map
Creek Fire
 CA-SNF-001391

Oct. 24, 2020
 Approx. 358,967
 Acres



- | | | | |
|-----|----------------|-----|------------------------|
| | Branch Break | --- | Uncontrolled Fire Edge |
|) (| Division Break | — | Contained Line |
| ⊙ | Camp | — | Main Roads |
| ⊙ | Staging Area | | |
| ● | Drop Point | | |
| • | Hellspot | | |
| ⊙ | Repeater | | |



MEDICAL PLAN (ICS 206 WF) CIIMT 1

1. Incident Name			2. Operational Period					
Creek Fire			Date/Time: 10/24/2020 Day Shift 0700 – 1900					
3. EMS / Ambulance Services								
Name	Location	Contact Method	Advanced Life Support (ALS)					
			Yes	No				
Frontline Medical	China Peak Base Camp	530-258-9155	XX					
American Ambulance M157	DP-20	Contact on Command	XX					
American Ambulance M188	Vermillion Spike	Contact on Command	XX					
American Ambulance M87	DIV E/F/G/H/I/J Day / ECCO Camp Night	Contact on Command	XX					
American Ambulance M88	Div A/B/C Day / ECCO Camp Night	Contact on Command	XX					
4. Air Rescue / Air Ambulance Services								
Name	Phone	Type of Aircraft & Capability						
All Air Rescue / Air Ambulance Resources	559-500-4446	ALS, NVG, Hoist						
5. Hospitals (all times estimated from incident location)								
Name & Level	GPS Datum – WGS 84 Degrees Decimal Minutes		Travel Time		Phone	Helipad		Address
	Lat:	Long:	Air	Gnd		Yes	No	
Clovis Community Medical Center	N 36° 50.32	W 119° 39.48	30 Mins	2 Hrs.	559-324-4000	XX		2755 Herndon Ave. Clovis, CA
	N 36° 44.650	W 119° 47.12	30 Mins	2 Hrs.	559-459-6000	XX		2823 Fresno St. Fresno, CA
Fresno Community Regional Medical Center Level I Trauma / Burn STEMI / Stroke	N 36° 50.15	W 119° 45.90	30 Mins	2 Hrs.	559-450-3000	XX		1303 E. Herndon Ave. Fresno, CA
	N 37° 38.615	W 118° 57.775	N/A	2 Hrs.	760-934-3311		XX	85 Sierra Park Rd. Mammoth Lakes, CA
St. Agnes Medical Center STEMI / Stroke	N 37° 30.00	W 119° 58.60	30 Mins	30 Mins	209-966-3631	XX		5189 Hospital Rd. Mariposa, CA
	N 37° 30.00	W 119° 58.60	30 Mins	30 Mins	209-966-3631	XX		5189 Hospital Rd. Mariposa, CA
6. Division / Crew Emergency Pre-Plan						<i>Update and discuss with assigned resources daily.</i>		
Fireline EMT / Medic's Division / Branch Location								
Air Hoist site location site: Lat: / Long: / Elevation:								
Helispot: Lat: / Long: / Elevation:								
7. Remote Aid Stations		Equipment Available on Site:	Basic Medical Supplies:					
Vermillion Spike		ALS Ambulance on site	Contact EMT Antes 707-396-3033					
ECCO Camp		Night – ALS Ambulance	Contact MEDL Carlson 651-755-0521					
8. Prepared By (Medical Unit Leader)		9. Date/Time	10. Reviewed By (Safety Officer)		11. Date/Time			
Brian Wisler MEDL 209-620-0660-ICP Kain Packwood MEDL 209-678-7448-ICP Rodd Mascis MEDL 909-630-3969-China Peak 		10/23/20 1900	Matt Lipson SOF2 (T) 805-550-5007 Doug McKelvey SOF 1 510-453-3817 		10/23/20 1900			

Medical Incident Report

MEDICAL PLAN (ICS 206 WF) CIIMT 1

<p>FOR A NON-EMERGENCY INCIDENT, WORK THROUGH CHAIN OF COMMAND TO REPORT AND TRANSPORT INJURED PERSONNEL AS NECESSARY.</p> <p>FOR A MEDICAL EMERGENCY: IDENTIFY ON SCENE INCIDENT COMMANDER BY NAME AND POSITION AND ANNOUNCE "MEDICAL EMERGENCY" TO INITIATE RESPONSE FROM IMT COMMUNICATIONS/DISPATCH.</p>					
<p>Use the following items to communicate situation to communications/dispatch.</p>					
<p>1. CONTACT COMMUNICATIONS / DISPATCH (Verify correct frequency prior to starting report) <i>Ex: "Communications, Div. Alpha. Stand-by for Emergency Traffic."</i></p>					
<p>2. INCIDENT STATUS: Provide incident summary (including number of patients) and command structure. <i>Ex: "Communications, I have a Red priority patient, unconscious, struck by a falling tree. Requesting air ambulance to Forest Road 1 at (Lat./Long.) This will be the Trout Meadow Medical, IC is TFLD Jones. EMT Smith is providing medical care."</i></p>					
Severity of Emergency / Transport Priority	<input type="checkbox"/> RED / PRIORITY 1 Life or limb threatening injury or illness. Evacuation need is IMMEDIATE <i>Ex: Unconscious, difficulty breathing, bleeding severely, 2^o - 3^o burns more than 4 palm sizes, heat stroke, disoriented.</i> <input type="checkbox"/> YELLOW / PRIORITY 2 Serious Injury or illness. Evacuation may be DELAYED if necessary. <i>Ex: Significant trauma, unable to walk, 2^o - 3^o burns not more than 1-3 palm sizes.</i> <input type="checkbox"/> GREEN / PRIORITY 3 Minor Injury or illness. Non-Emergency transport <i>Ex: Sprains, strains, minor heat-related illness.</i>				
Nature of Injury or Illness & Mechanism of Injury	Brief Summary of Injury or Illness <i>(Ex: Unconscious, Struck by Falling Tree)</i>				
Transport Request	Air Ambulance / Short Haul/Hoist Ground Ambulance / Other				
Patient Location	Descriptive Location & Lat. / Long. <i>(WGS84)</i>				
Incident Name	Geographic Name + "Medical" <i>(Ex: Trout Meadow Medical)</i>				
On-Scene Incident Commander	Name of on-scene IC of Incident within an Incident <i>(Ex: TFLD Jones)</i>				
Patient Care	Name of Care Provider <i>(Ex: EMT Smith)</i>				
<p>3. INITIAL PATIENT ASSESSMENT: Complete this section for each patient as applicable (start with the most severe patient)</p>					
Patient Assessment: See IRPG PAGE 106					
Treatment:					
<p>4. TRANSPORT PLAN:</p>					
Evacuation Location (if different): <i>(Descriptive Location (drop point, intersection, etc.) or Lat. / Long.)</i> Patient's ETA to Evacuation Location:					
Helispot / Extraction Site Size and Hazards:					
<p>5. ADDITIONAL RESOURCES / EQUIPMENT NEEDS:</p>					
<i>Example: Paramedic/EMT, Crews, Immobilization Devices, AED, Oxygen, Trauma Bag, IV/Fluid(s), Splints, Rope rescue, Wheeled litter, HAZMAT, Extrication</i>					
<p>6. COMMUNICATIONS: Identify State Air/Ground EMS Frequencies and Hospital Contacts as applicable</p>					
Function	Channel Name/Number	Receive (RX)	Tone/NAC *	Transmit (TX)	Tone/NAC *
COMMAND					
AIR-TO-GRND					
TACTICAL					
<p>7. CONTINGENCY: Considerations: If primary options fail, what actions can be implemented in conjunction with primary evacuation method? Be thinking ahead.</p>					
<p>8. ADDITIONAL INFORMATION: Updates/Changes, et c.</p>					
<p>REMEMBER: Confirm ETA's of resources ordered. Act according to your level of training. Be Alert. Keep Calm. Think Clearly. Act Decisively.</p>					