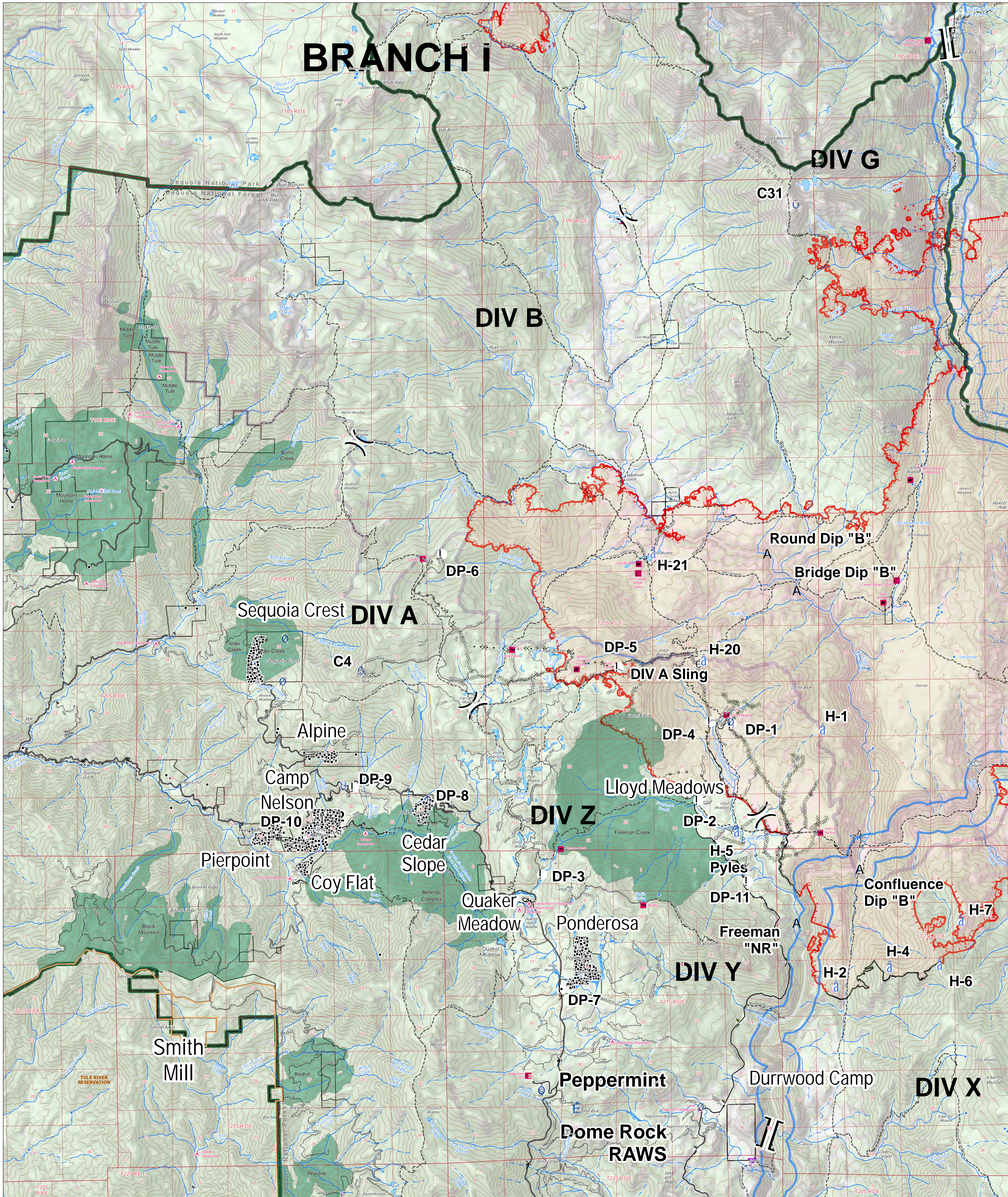
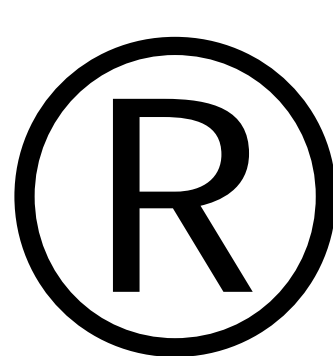


BRANCH I

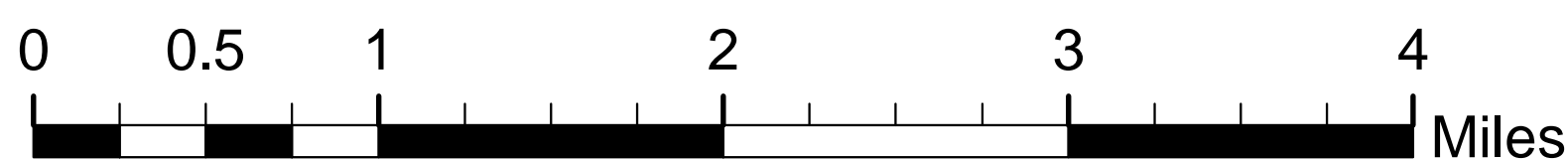


Castle Fire: 63,170 Acres
Shotgun Fire: 498 Acres



BRANCH I SEQUOIA COMPLEX

CA-SQF-002622
09/09/2020



1:35,000
Datum: NAD 83

- A Dip Site
- U Aerial Hazard
- DP Drop Point
- H Helibase
- HS Helispot
- MW Mobile Weather Unit
- R Repeater

- S Sling Site
- SA Staging Area
- W Water Source
- RS Restricted Water Source

-)) Division Break
- || Branch Break

- Wildfire Daily Fire Perimeter
- Uncontrolled Fire Edge
- Contained Line
- Completed Dozer Line
- Completed Hand Line
- Road as Completed Line
- Proposed Dozer Line
- Private
- IR Isolated Heat Source
- Structures

