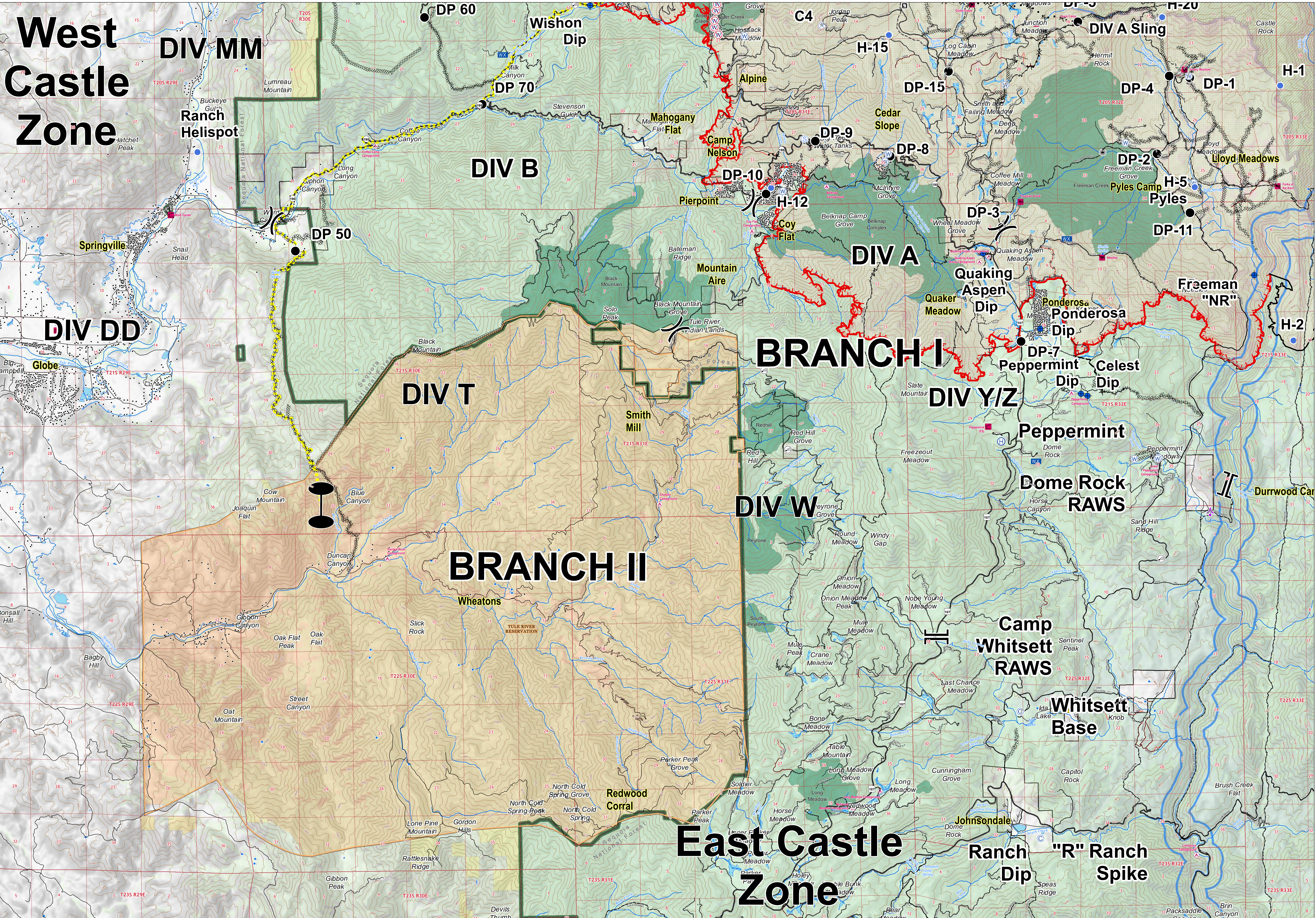


West Castle Zone

East Castle Zone



Castle Fire: 132,658 Acres
Shotgun Fire: 830 Acres

Datum: NAD 83
1:35,000

BRANCH I & II
EAST CASTLE ZONE
SEQUOIA COMPLEX
CA-SQF-002622
09/19/2020

| | | | | | | | | |
|---------------|------------|---------------------|-------------------|-------------------------|------------------------|----------------------------------|------------------------|--------------------------|
| Dip Site | Closure | Helipoint | Retardant/Mud Pit | Water Source | Division Break | Branch Break | Uncontrolled Fire Edge | M/W Line Break Completed |
| Aerial Hazard | Drop Point | Internet Access | Sling Site | Restricted Water Source | Zone Break | Wildfire Daily Fire Perimeter | Completed Dozer Line | Proposed Dozer Line |
| Camp | Gate | Mobile Weather Unit | Staging Area | Value at Risk | Private | Fire Break Planned or Incomplete | Planned Fire Line | Other |
| Helibase | Repeater | Structure Wrap | Other | Access or Improved Road | Road as Completed Line | Other | Other | Other |

