

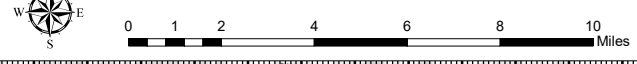
**GROUSE ROUTE**  
IN AT 5,000', OUT AT 5,500'

**WEST CASTLE ZONE**

**190 ROUTE**

**TULE ROUTE**

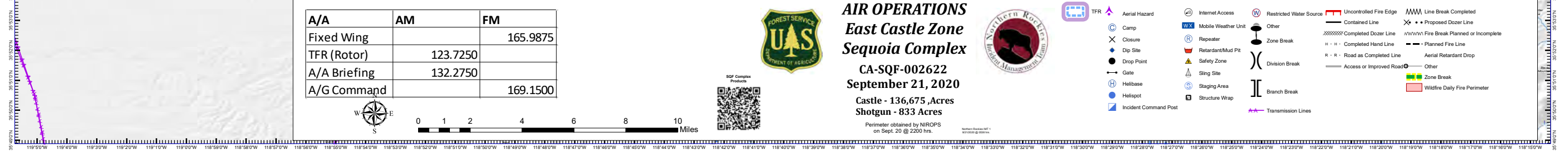
A/A	AM	FM
Fixed Wing		165.9875
TFR (Rotor)	123.7250	
A/A Briefing	132.2750	
A/G Command		169.1500



**AIR OPERATIONS**  
**East Castle Zone**  
**Sequoia Complex**  
CA-SQF-002622  
September 21, 2020  
Castle - 136,675 Acres  
Shotgun - 833 Acres



- Aerial Hazard
- Camp
- Closure
- Drop Point
- Gate
- Helibase
- Helispot
- Incident Command Post
- Internet Access
- Mobile Weather Unit
- Repeater
- Retardant/Mud Pit
- Safety Zone
- Sling Site
- Staging Area
- Structure Wrap
- Restricted Water Source
- Other
- Zone Break
- Division Break
- Branch Break
- Transmission Lines
- Uncontrolled Fire Edge
- Contained Line
- Completed Dozer Line
- Fire Break Planned or Incomplete
- Planned Fire Line
- Road as Completed Line
- Access or Improved Road
- Line Break Completed
- Proposed Dozer Line
- Fire Break Planned or Incomplete
- Aerial Retardant Drop
- Other
- Zone Break
- Wildfire Daily Fire Perimeter



NAME	LAT	LONG
Bridge Dip "B"	36 12.063' N	118 27.445' W
Confluence Dip "B"	36 7.700' N	118 26.316' W
Round Dip "B"	36 12.642' N	118 28.000' W
Freeman "NR"	36 6.875' N	118 27.551' W
Beach Dip (X,U,N Only)	36 6.931' N	118 17.824' W
Quaking Aspen Dip (Type 2 Only)	36 7.285' N	118 32.816' W
Sage Dip	36 14.179' N	118 30.960' W
Wishon Dip	36 11.279' N	118 40.387' W
Triangle Dip	36 14.762' N	118 46.419' W
Hook Dip	36 13.607' N	118 45.738' W
Carl Dip	36 14.617' N	118 44.522' W
Mountain Home Dip	36 12.479' N	118 43.010' W
Ponderosa Dip	36 6.085' N	118 31.729' W
Celest Dip	36 5.018' N	118 30.829' W
Greenfield Dip <i>Longline only</i>	36 21.918' N	118 50.552' W
Green Roof Dip <i>Longline only</i>	36 21.357' N	118 48.705' W
Dozer Dip	36 19.161' N	118 50.547' W
Last Dip	36 21.230' N	118 46.241' W
Horders Dip	36 12.09' W	118 47.49' W
Camp Nelson MRB	36 8.4027' N	118 36.8549' W
Peppermint Helibase	36 4.321' N	118 32.519' W
Porterville Helibase	36 1.460' N	119 3.926' W
Gill Helibase	36 17.390' N	119 4.311' W
H-1	36 9.852' N	118 26.985' W
H-2	36 5.838' N	118 26.806' W
H-3 Blackrock	36 5.609' N	118 15.666' W
H-4	36 6.128' N	118 25.772' W
H-5 Pyles	36 8.278' N	118 28.678' W
H-6	36 6.152' N	118 24.804' W
H-7	36 6.833' N	118 24.373' W
H-8	36 6.759' N	118 22.767' W
H-12	36 8.368' N	118 36.917' W
H-15	36 10.743' N	118 34.582' W
H-20	36 10.960' N	118 29.259' W
H-21	36 12.649' N	118 30.208' W
H-30	36 20.809' N	118 24.512' W
Ranch Helispot	36 9.052' N	118 48.064' W
C31	36 18.077' N	118 27.340' W
C4	36 10.909' N	118 35.882' W
C11	36 0.630' N	118 23.448' W
CDF C1 T14	36 17.247' N	118 50.390' W
CDF C11 T14	36 24.663' N	118 48.186' W
C60	36 0.948' N	118 36.890' W
DIV A Sling	36 10.948' N	118 29.360' W
Ridge Check	36 6.720' N	118 41.730' W
Needle Check	36 5.89' N	118 27.51' W
Walter Check	36 15.43' N	118 36.11' W
Lookout IP <i>Enter @ 10,000'</i>	36 3.470' N	118 22.535' W
Camp IP <i>Enter @ 10,000'</i>	35 55.56' N	118 33.900' W
Lake IP	36 04.76' N	118 54.930' W
Grouse Check	36 19.38' N	118 52.01' W
KOHI Check	36 13.66' N	118 31.33' W
Grassy Check	36 11.29' N	118 45.37' W
Slate Check	36 04.96' W	118 34.47' W