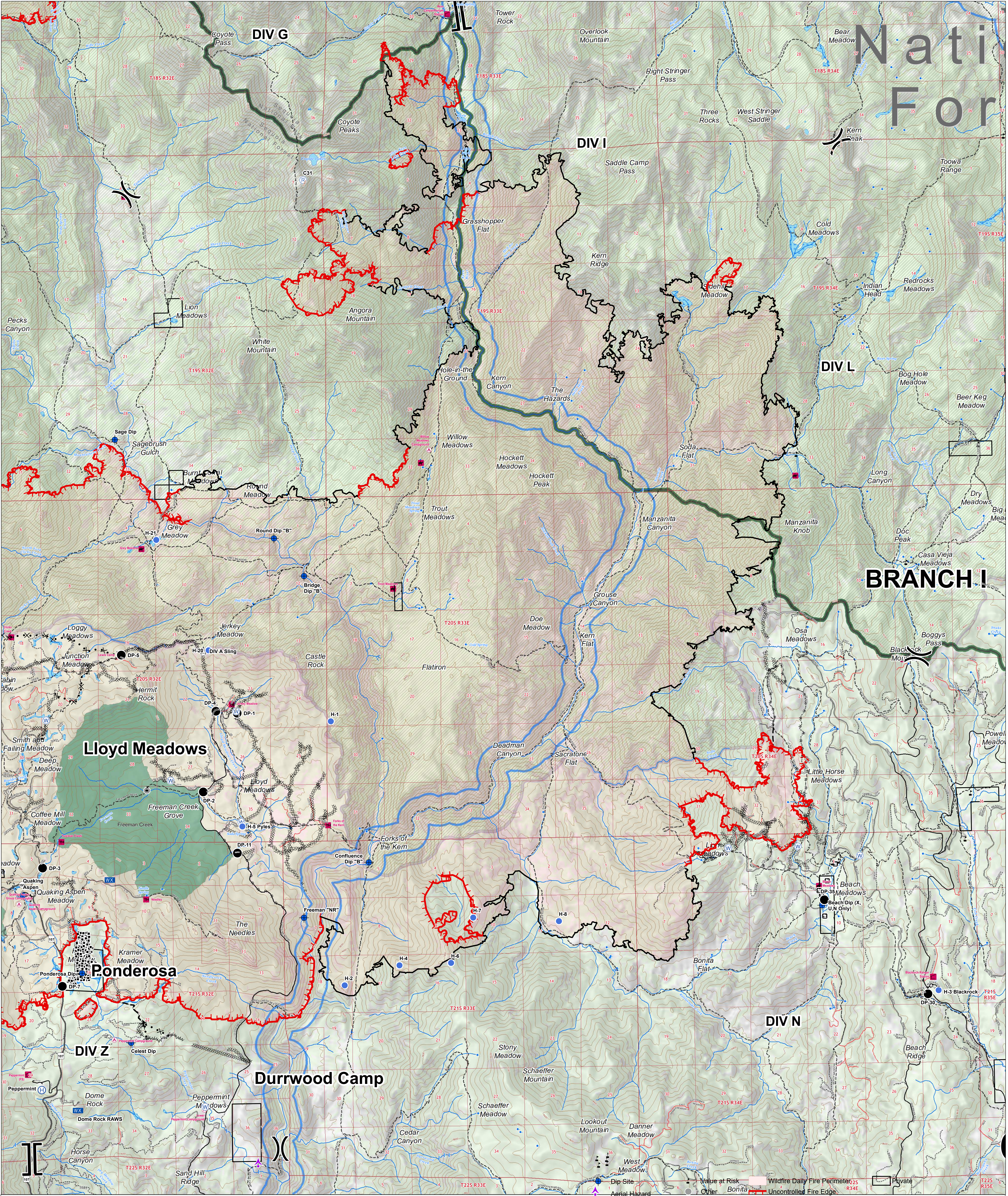
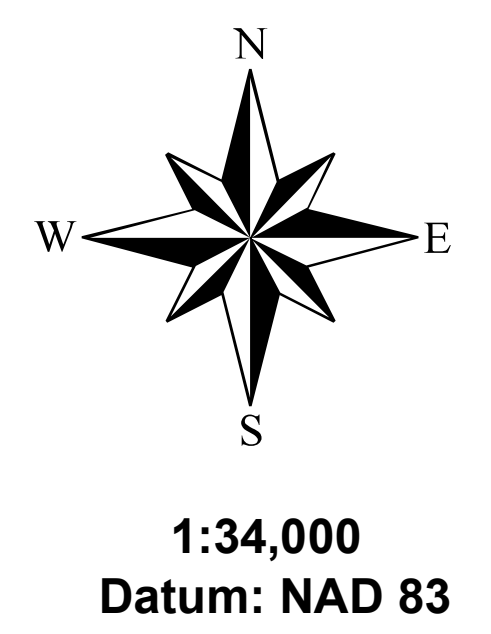


Nati For

BRANCH I



Castle Fire: 136,675 Acres
Shotgun Fire: 833 Acres



BRANCH I SEQUOIA COMPLEX EAST CASTLE ZONE CA-SQF-002622 09/22/2020

- Drop Point
- Ⓜ Helibase
- Ⓜ Helispot
- Ⓜ Mobile Weather Unit
- Ⓜ Repeater
- Ⓜ Sling Site
- Ⓜ Structure Wrap
- Ⓜ Water Source
- Ⓜ Aerial Hazard
- Ⓜ Value at Risk
- Ⓜ Other
- Ⓜ Bonita
- Ⓜ Private
- Contained Line
- Ⓜ Completed Dozer Line
- Ⓜ Completed Hand Line
- Ⓜ Road as Completed Line
- Ⓜ Access or Improved Road
- Ⓜ Line Break Completed
- Ⓜ Proposed Dozer Line
- Ⓜ Fire Break Planned or Incomplete
- Ⓜ Planned Fire Line
- Ⓜ Aerial Retardant Drop
- Ⓜ Division Break
- Ⓜ Branch Break

