



AIR OPERATIONS
East Castle Zone
Sequoia Complex
 CA-SQF-002622
 September 22, 2020
 Castle - 140,766 Acres
 Shotgun - 834 Acres
 Perimeter obtained by NIROPS
 on Sept. 21 @ 0000 hrs.

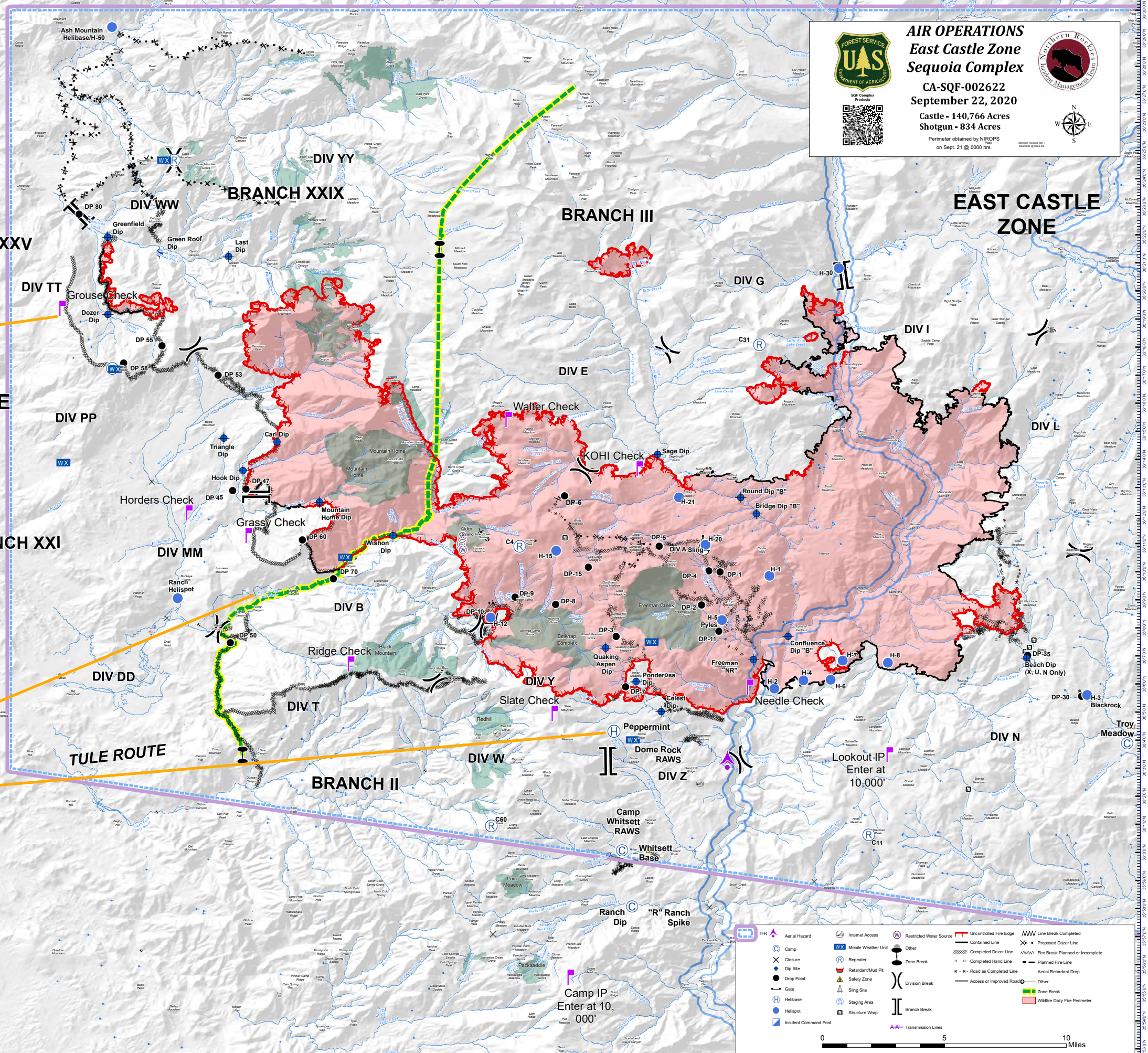


| A/A | AM | FM |
|--------------|----------|----------|
| Fixed Wing | | 165.9875 |
| TFR (Rotor) | 123.7250 | |
| A/A Briefing | 132.2750 | |
| A/G Command | | 169.1500 |

Legend:

- Camp
- Drop Point
- Helibase
- Helipost
- Incident Command Post
- Aerial Hazard
- Mobile Weather Unit
- Repeater
- Safety Zone
- Sling Site
- Staging Area
- Structure Wrap
- Internet Access
- Restricted Water Source
- Other
- Zone Break
- Division Break
- Branch Break
- Transmission Lines
- Uncontrolled Fire Edge
- Contained Line
- Completed Dozer Line
- Retardant/Mud Pit
- Safety Zone
- Completed Hand Line
- Planned Fire Line
- Aerial Retardant Drop
- Access or Improved Road
- Other
- MWW Line Break Completed
- Proposed Dozer Line
- Fire Break Planned or Incomplete
- Wildfire Daily Fire Perimeter

Scale: 0, 5, 10 Miles



| NAME | LAT | LONG |
|--|--------------|----------------|
| Bridge Dip "B" | 36 12.063' N | 118 27.445' W |
| Confluence Dip "B" | 36 7.700' N | 118 26.316' W |
| Round Dip "B" | 36 12.642' N | 118 28.000' W |
| Freeman "NR" | 36 6.875' N | 118 27.551' W |
| Beach Dip (X,U,N Only) | 36 6.931' N | 118 17.824' W |
| Quaking Aspen Dip (Type 2 Only) | 36 7.285' N | 118 32.816' W |
| Sage Dip | 36 14.179' N | 118 30.960' W |
| Wishon Dip | 36 11.279' N | 118 40.387' W |
| Triangle Dip | 36 14.762' N | 118 46.419' W |
| Hook Dip | 36 13.607' N | 118 45.738' W |
| Carl Dip | 36 14.617' N | 118 44.522' W |
| Mountain Home Dip | 36 12.479' N | 118 43.010' W |
| Ponderosa Dip | 36 6.085' N | 118 31.729' W |
| Celest Dip | 36 5.018' N | 118 30.829' W |
| Greenfield Dip <i>Longline only</i> | 36 21.918' N | 118 50.552' W |
| Green Roof Dip <i>Longline only</i> | 36 21.357' N | 118 48.705' W |
| Dozer Dip | 36 19.161' N | 118 50.547' W |
| Last Dip | 36 21.230' N | 118 46.241' W |
| Camp Nelson MRB | 36 8.4027' N | 118 36.8549' W |
| Peppermint Helibase | 36 4.321' N | 118 32.519' W |
| Porterville Helibase | 36 1.460' N | 119 3.926' W |
| Gill Helibase | 36 17.390' N | 119 4.311' W |
| Ash Mountain Helibase/H-50 | 36 29.40' N | 118 50.40' W |
| H-1 | 36 9.852' N | 118 26.985' W |
| H-2 | 36 5.838' N | 118 26.806' W |
| H-3 Blackrock | 36 5.609' N | 118 15.666' W |
| H-4 | 36 6.128' N | 118 25.772' W |
| H-5 Pyles | 36 8.278' N | 118 28.678' W |
| H-6 | 36 6.152' N | 118 24.804' W |
| H-7 | 36 6.833' N | 118 24.373' W |
| H-8 | 36 6.759' N | 118 22.767' W |
| H-12 | 36 8.368' N | 118 36.917' W |
| H-15 | 36 10.743' N | 118 34.582' W |
| H-20 | 36 10.960' N | 118 29.259' W |
| H-21 | 36 12.649' N | 118 30.208' W |
| H-30 | 36 20.809' N | 118 24.512' W |
| Ranch Helispot | 36 9.052' N | 118 48.064' W |
| C31 | 36 18.077' N | 118 27.340' W |
| C4 | 36 10.909' N | 118 35.882' W |
| C11 | 36 0.630' N | 118 23.448' W |
| CDF C1 T14 | 36 17.247' N | 118 50.390' W |
| CDF C11 T14 | 36 24.663' N | 118 48.186' W |
| C60 | 36 0.948' N | 118 36.890' W |
| DIV A Sling | 36 10.948' N | 118 29.360' W |
| Ridge Check | 36 6.720' N | 118 41.730' W |
| Needle Check | 36 5.89' N | 118 27.51' W |
| Walter Check | 36 15.43' N | 118 36.11' W |
| Lookout IP <i>Enter @ 10,000'</i> | 36 3.470' N | 118 22.535' W |
| Camp IP <i>Enter @ 10,000'</i> | 35 55.56' N | 118 33.900' W |
| Lake IP | 36 04.76' N | 118 54.930' W |
| Grouse Check | 36 19.38' N | 118 52.01' W |
| KOHI Check | 36 13.66' N | 118 31.33' W |
| Grassy Check | 36 11.29' N | 118 45.37' W |
| Slate Check | 36 04.96' W | 118 34.47' W |
| Horders Check | 36 12.09' W | 118 47.49' W |