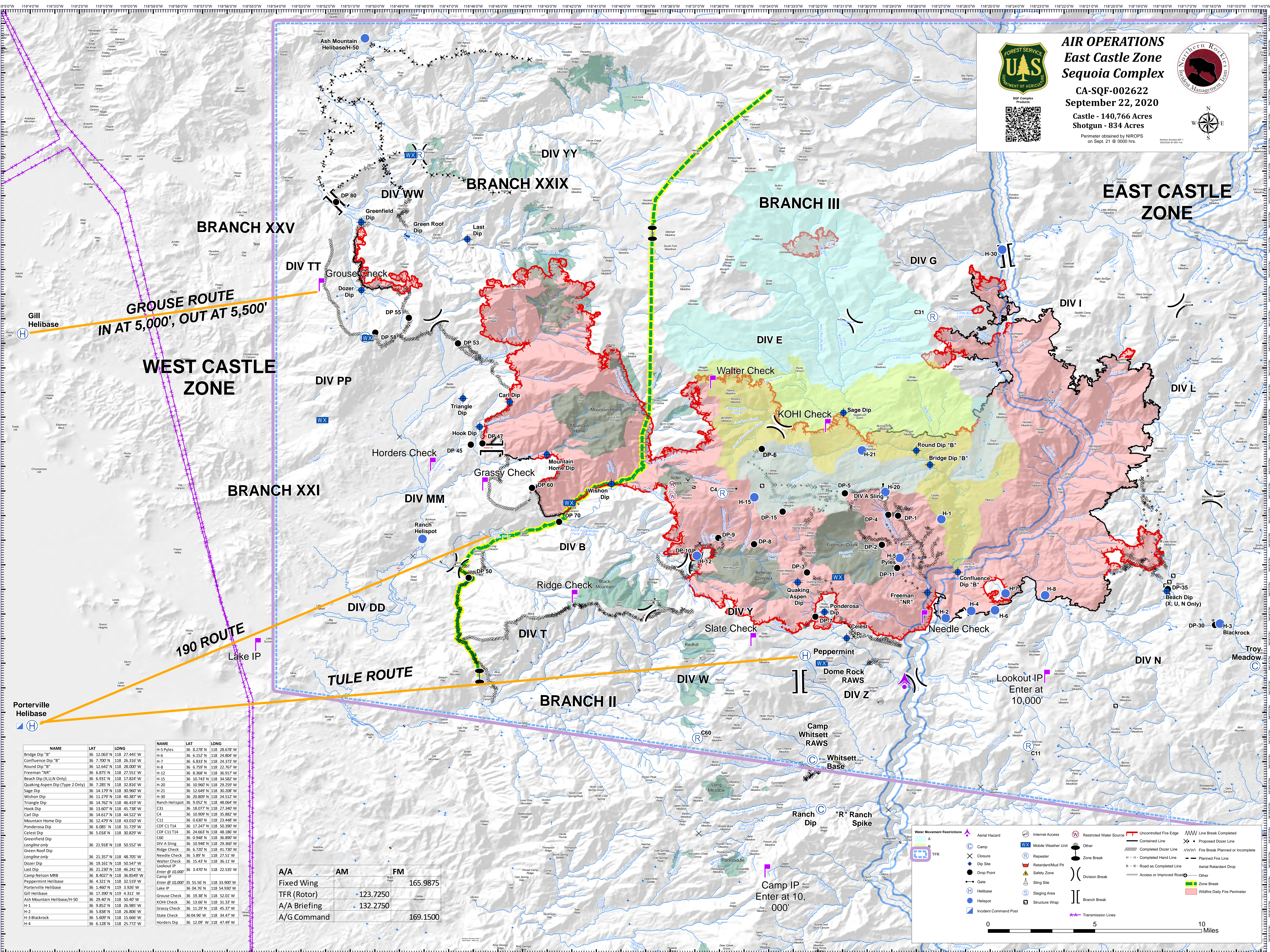


AIR OPERATIONS
East Castle Zone
Sequoia Complex
 CA-SQF-002622
 September 22, 2020
 Castle - 140,766 Acres
 Shotgun - 834 Acres
 Perimeter obtained by NIROPS
 on Sept. 21 @ 0000 hrs.







NAME	LAT	LONG	NAME	LAT	LONG
Bridge Dip "B"	36 12.063° N	118 27.445° W	H-5 Pyles	36 8.278° N	118 28.678° W
Confluence Dip "B"	36 7.700° N	118 26.316° W	H-6	36 6.152° N	118 24.804° W
Round Dip "B"	36 12.642° N	118 28.003° W	H-7	36 6.833° N	118 24.373° W
Freeman "NR"	36 6.875° N	118 27.551° W	H-8	36 6.759° N	118 22.767° W
Beach Dip (X,U,N Only)	36 6.931° N	118 17.824° W	H-12	36 6.368° N	118 36.917° W
Quaking Aspen Dip (Type 2 Only)	36 7.285° N	118 32.816° W	H-15	36 10.743° N	118 34.582° W
Sage Dip	36 14.379° N	118 30.960° W	H-20	36 10.960° N	118 29.259° W
Wishon Dip	36 11.279° N	118 40.287° W	H-21	36 12.649° N	118 30.208° W
Greenfield Dip	36 14.762° N	118 46.219° W	H-30	36 20.809° N	118 24.512° W
Hook Dip	36 13.607° N	118 45.738° W	Ranch Helispot	36 9.052° N	118 48.064° W
Carl Dip	36 14.617° N	118 44.522° W	C31	36 18.077° N	118 27.340° W
Mountain Home Dip	36 12.479° N	118 43.010° W	C4	36 10.909° N	118 35.882° W
Ponderosa Dip	36 6.085° N	118 31.729° W	C11	36 6.630° N	118 23.448° W
Celest Dip	36 5.018° N	118 30.829° W	CDP C1 T14	36 17.247° N	118 50.390° W
Greenfield Dip	36 21.918° N	118 50.552° W	CDP C11 T14	36 24.663° N	118 48.196° W
Longline only	36 21.357° N	118 48.705° W	C60	36 0.948° N	118 36.890° W
Green Roof Dip	36 19.161° N	118 50.547° W	DIV A Sling	36 10.948° N	118 29.360° W
Dozer Dip	36 21.230° N	118 46.241° W	Needle Check	36 6.720° N	118 41.730° W
Camp Nelson MRB	36 8.4027° N	118 36.5497° W	Ridge Check	36 5.89° N	118 27.51° W
Peppermint Helibase	36 4.321° N	118 32.519° W	Needle Check	36 6.720° N	118 41.730° W
Porterville Helibase	36 1.460° N	119 3.926° W	Walter Check	36 15.43° N	118 36.11° W
Gill Helibase	36 17.390° N	119 4.311° W	Enter @ 10,000'	36 3.470° N	118 22.535° W
Ash Mountain Helibase/H-50	36 29.40° N	118 50.40° W	Camp IP	36 55.56° N	118 33.900° W
H-1	36 9.852° N	118 26.985° W	Enter @ 10,000'	36 55.56° N	118 33.900° W
H-2	36 5.838° N	118 26.985° W	Lake IP	36 4.321° N	118 32.519° W
H-3 Blackrock	36 5.609° N	118 15.666° W	Porterville Helibase	36 1.460° N	119 3.926° W
H-4	36 6.128° N	118 25.772° W	Gill Helibase	36 17.390° N	119 4.311° W
			Ash Mountain Helibase/H-50	36 29.40° N	118 50.40° W
			H-1	36 9.852° N	118 26.985° W
			H-2	36 5.838° N	118 26.985° W
			H-3 Blackrock	36 5.609° N	118 15.666° W
			H-4	36 6.128° N	118 25.772° W

A/A	AM	FM
Fixed Wing		165.9875
TFR (Rotor)	123.7250	
A/A Briefing	132.2750	
A/G Command		169.1500

Water Movement Restrictions

- Internet Access
- Restricted Water Source
- Uncontrolled Fire Edge
- Controlled Line
- Completed Dozer Line
- Proposed Dozer Line
- Completed Hand Line
- Fire Break Planned or Incomplete
- Planned Fire Line
- Access or Improved Road
- Aerial Retardant Drop
- Other
- Zone Break
- Division Break
- Branch Break
- Transmission Lines
- Zone Break
- Wildfire Daily Fire Perimeter

Other Symbols:

- Camp
- Closure
- Repeater
- Retardant/Mud Pit
- Safety Zone
- Sling Site
- Staging Area
- Structure Wrap
- Incident Command Post
- Aerial Hazard
- Mobile Weather Unit
- Drop Point
- Gate
- Helibase
- Helispot
- Line Break Completed
- Proposed Dozer Line
- Fire Break Planned or Incomplete
- Planned Fire Line
- Aerial Retardant Drop
- Other
- Zone Break
- Wildfire Daily Fire Perimeter

0 5 10 Miles