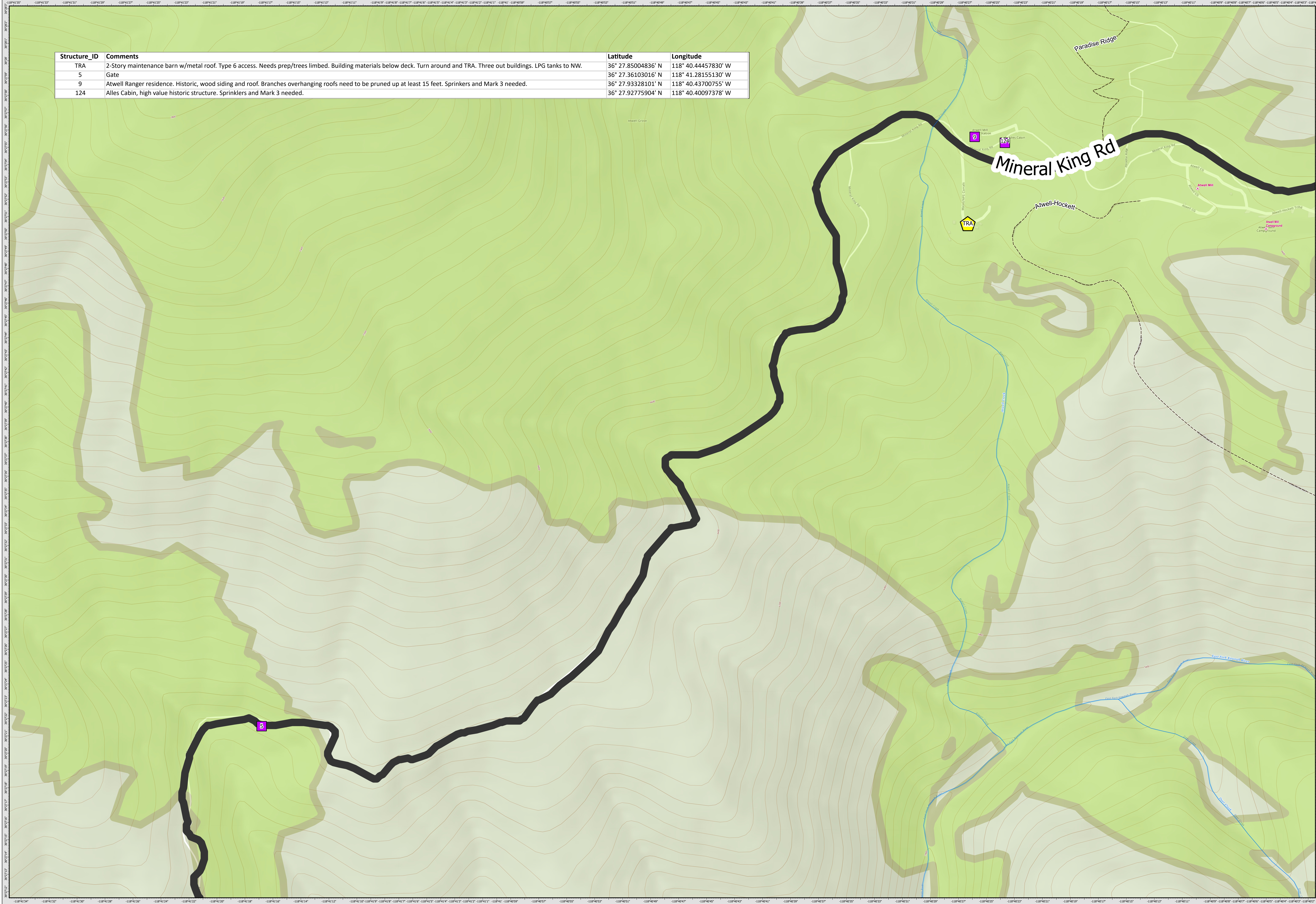





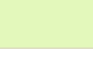


Structure_ID	Comments	Latitude	Longitude
TRA	2-Story maintenance barn w/metal roof. Type 6 access. Needs prep/trees limbed. Building materials below deck. Turn around and TRA. Three out buildings. LPG tanks to NW.	36° 27.85004836' N	118° 40.44457830' W
5	Gate	36° 27.36103016' N	118° 41.28155130' W
9	Atwell Ranger residence. Historic, wood siding and roof. Branches overhanging roofs need to be pruned up at least 15 feet. Sprinklers and Mark 3 needed.	36° 27.93328101' N	118° 40.43700755' W
124	Alles Cabin, high value historic structure. Sprinklers and Mark 3 needed.	36° 27.92775904' N	118° 40.40097378' W



-  Structure
-  TRA
-  Trail
-  Stream/River
-  Road
-  Sequoia NP Sequoia Groves

# Atwell Structure Defense

## SQF Complex

### CA-SQF-002622

