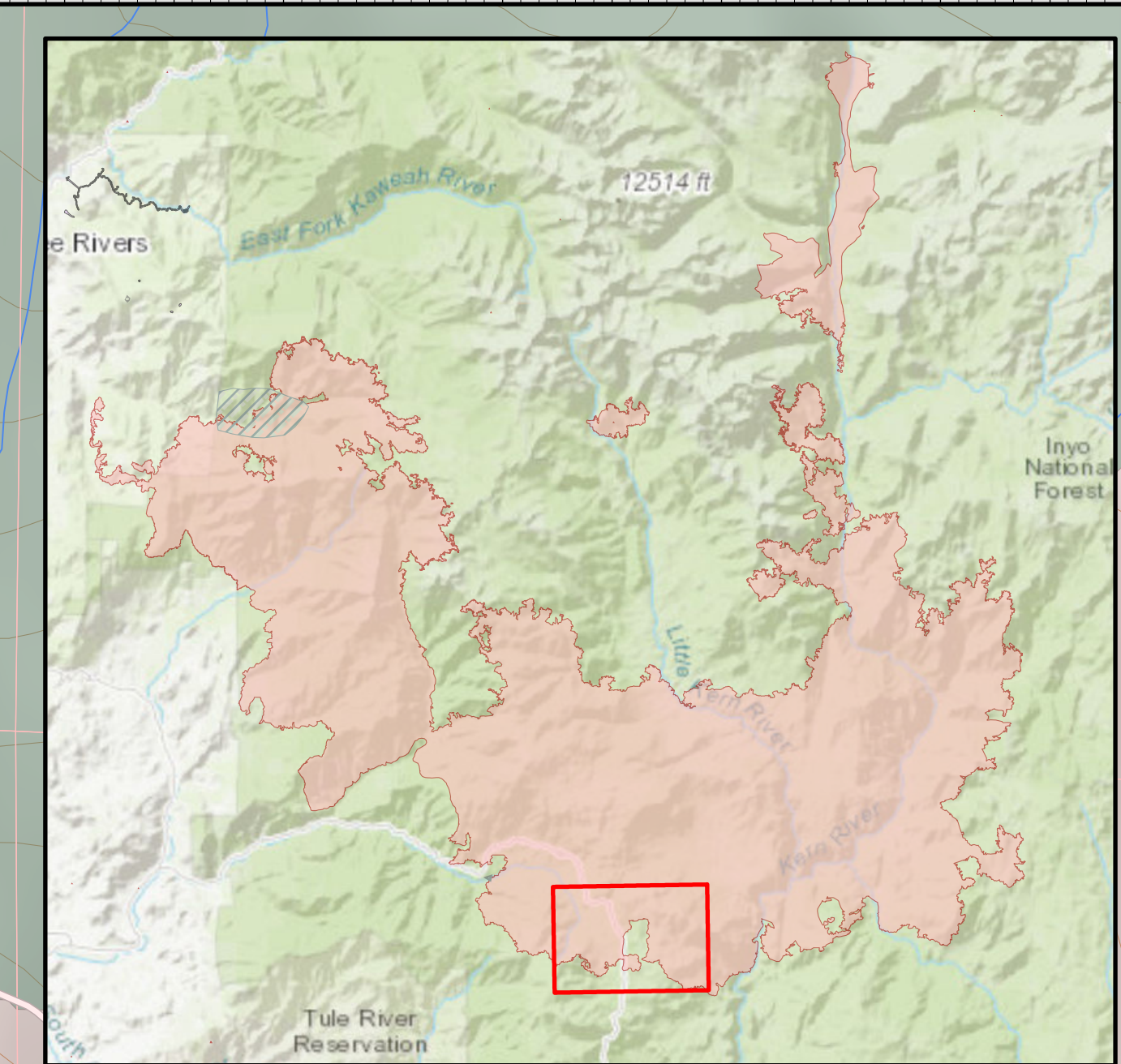
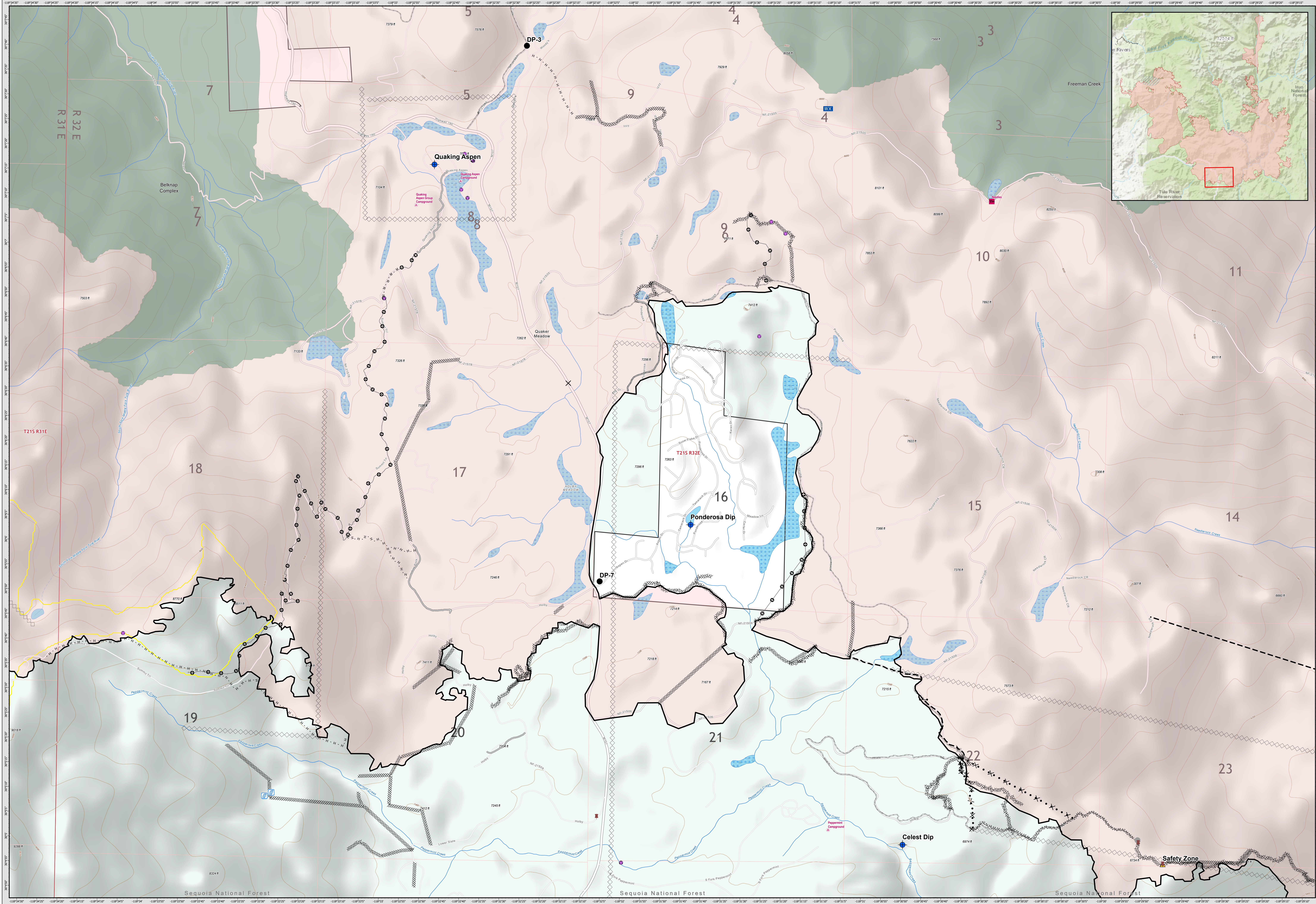


# SUPPRESSION REPAIR PONDEROSA



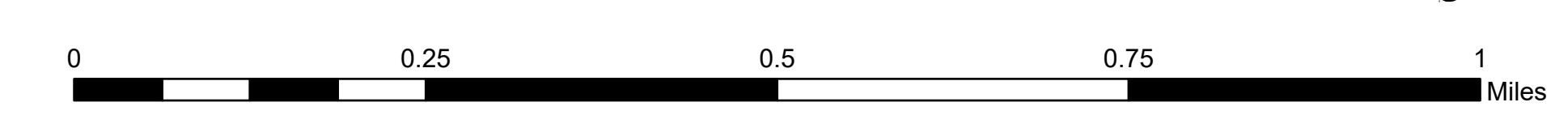
- |                          |                                  |                        |                     |                               |
|--------------------------|----------------------------------|------------------------|---------------------|-------------------------------|
| Administrative Forest    | Road as Completed Line           | Backcountry Structures | Mobile Weather Unit | FS                            |
| Wilderness Area          | Access or Improved Road          | Dip Site               | Repair Point        | FWS                           |
| Administrative Forest    | Proposed Dozer Line              | Bridge                 | Safety Zone         | NPS                           |
| Slate Mtn Botanical Area | Fire Break Planned or Incomplete | Closure                | Stream Crossing     | State                         |
| Contained Line           | Planned Fire Line                | Air Tanker Retardant   | Other               | Private                       |
| Completed Dozer Line     | Road Repair                      | Drop Point             | Dozer Push          | Wildfire Daily Fire Perimeter |
| Completed Hand Line      | Other                            | Gate                   | Gate                | Private                       |
|                          |                                  | BIA                    |                     |                               |
|                          |                                  | BLM                    |                     |                               |
|                          |                                  | BOR                    |                     |                               |

## SUPPRESSION REPAIR Ponderosa

SQF Complex  
CA-SQF-002622  
10/28/2020



169921 acres,  
as of 10/27/2020, 0900 HRS



1:7,000