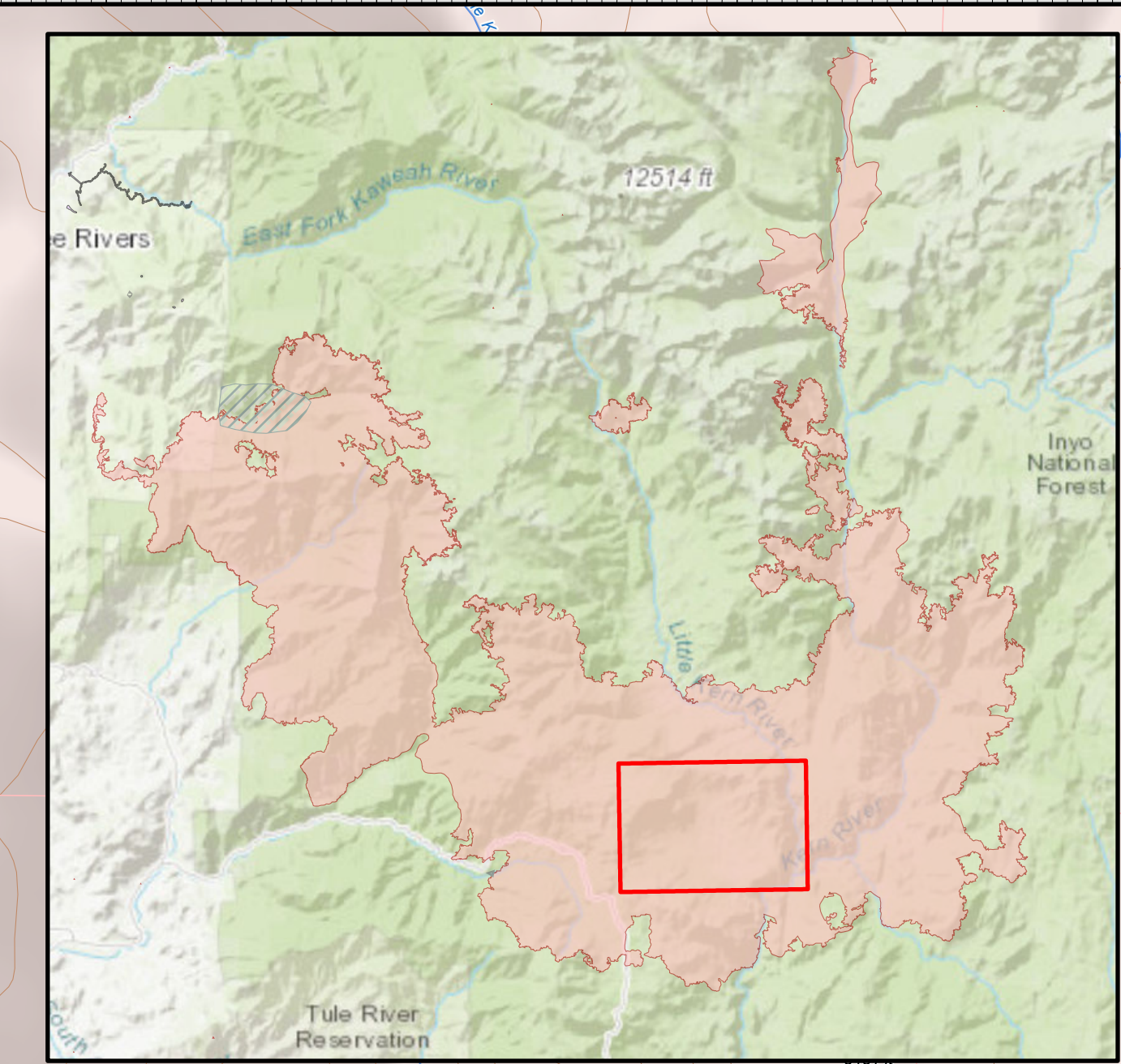
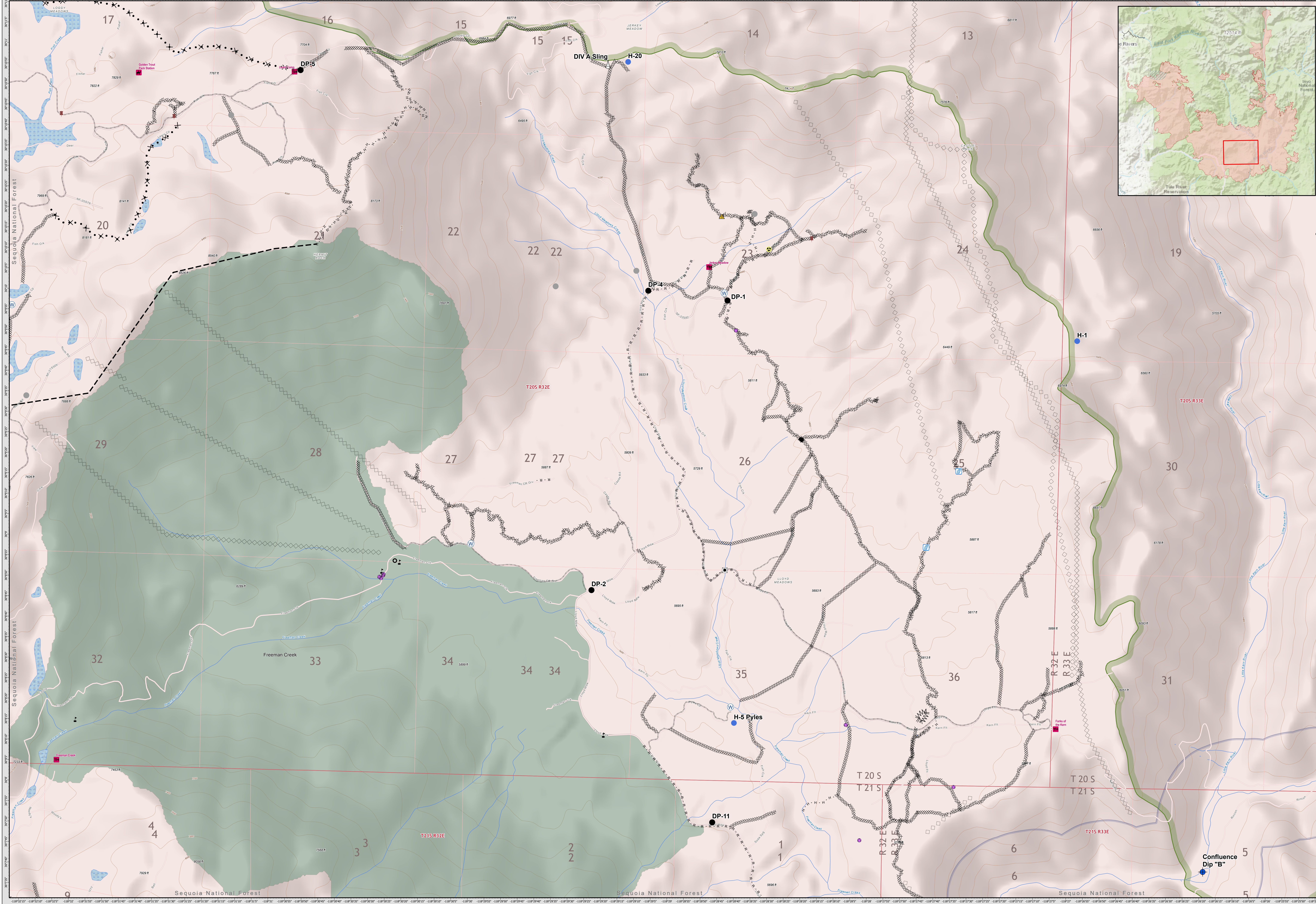


SUPPRESSION REPAIR LLOYD MEADOWS FREEMAN CREEK



- | | | | | | |
|--------------------------|------------------------|------------------------|-----------------|---------------|-------------------------------|
| Administrative Forest | Completed Hand Line | Road Repair | Hazard | Water Source | FWS |
| Wilderness Area | Road as Completed Line | Backcountry Structures | Helispot | Value at Risk | NPS |
| Wilderness Area | Line Break Completed | Dip Site | Repair Point | State | Private |
| Administrative Forest | Proposed Dozer Line | Culvert | Road Repair | BIA | Private |
| Slate Mtn Botanical Area | Planned Fire Line | Drop Point | Safety Zone | BLM | Wildfire Daily Fire Perimeter |
| Completed Dozer Line | Aerial Retardant Drop | Dozer Push | Sling Site | BOR | Private |
| | Air Tanker Retardant | | Stream Crossing | FS | Label_Point |

SUPPRESSION REPAIR Lloyd Meadows/Freeman Creek

SQF Complex
CA-SQF-002622
10/28/2020



169921 acres,
as of 10/27/2020, 0900 HRS



1:8,500