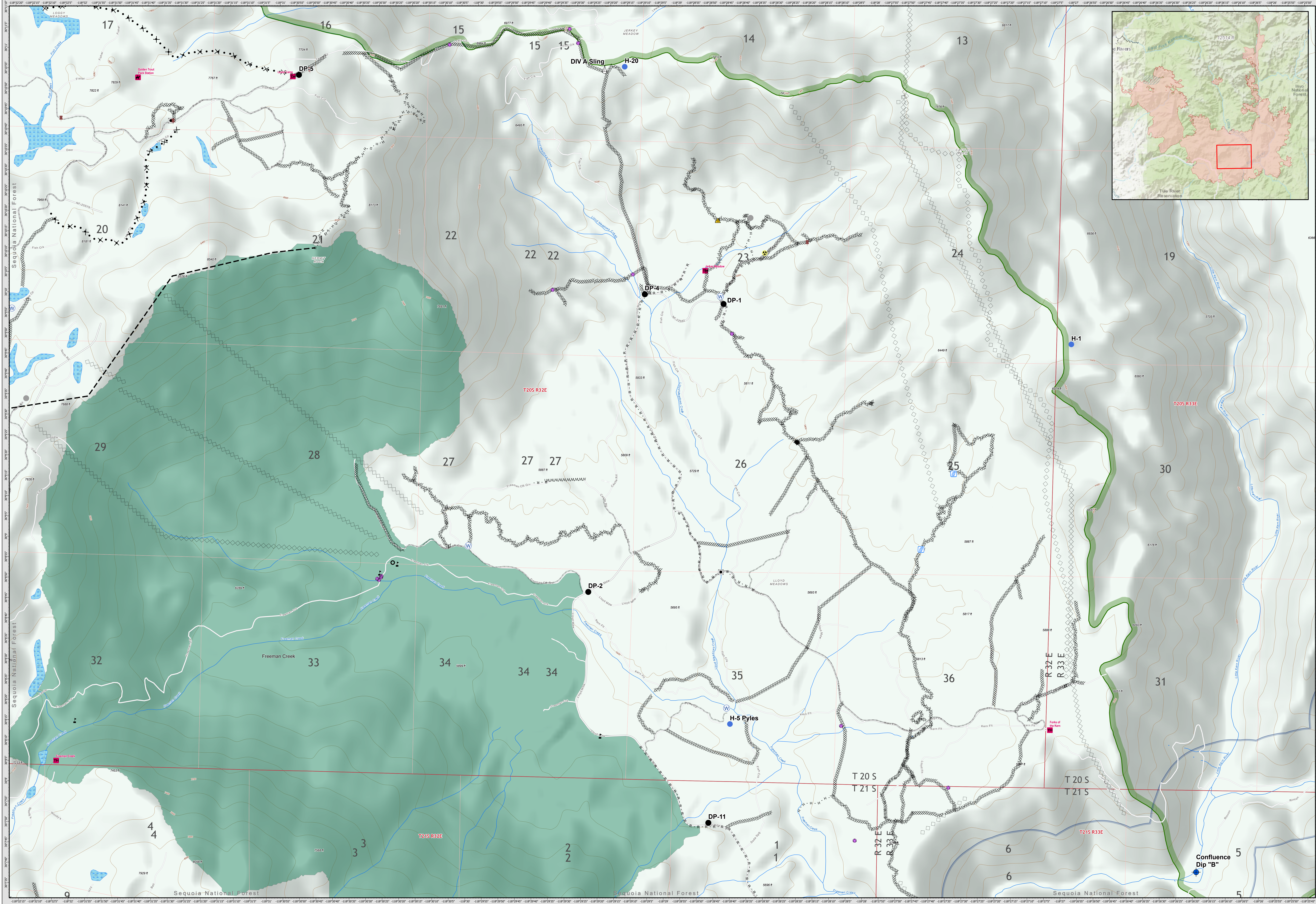


# SUPPRESSION REPAIR LLOYD MEADOWS FREEMAN CREEK



## SUPPRESSION REPAIR Lloyd Meadows/Freeman Creek

SQF Complex  
CA-SQF-002622  
11/02/2020

- |                          |                                  |                      |                 |         |
|--------------------------|----------------------------------|----------------------|-----------------|---------|
| Administrative Forest    | Proposed Dozer Line              | Drop Point           | Sling Site      | FS      |
| Wilderness Area          | Fire Break Planned or Incomplete | Dozer Push           | Stream Crossing | FWS     |
| Wilderness Area          | Planned Fire Line                | Hazard               | Water Source    | NPS     |
| Administrative Forest    | Aerial Retardant Drop            | Air Tanker Retardant | Value at Risk   | State   |
| Slate Mtn Botanical Area | Road Repair                      | Repair Point         | Other           | Private |
| Backcountry Structures   | Completed Dozer Line             | BIA                  | Private         | Private |
| Completed Hand Line      | Road Repair                      | BLM                  | Label_Point     | Private |
| Road as Completed Line   | Safety Zone                      | BOR                  |                 |         |

170,384 acres,  
as of 11/01/2020, 0900 HRS

1:8,500