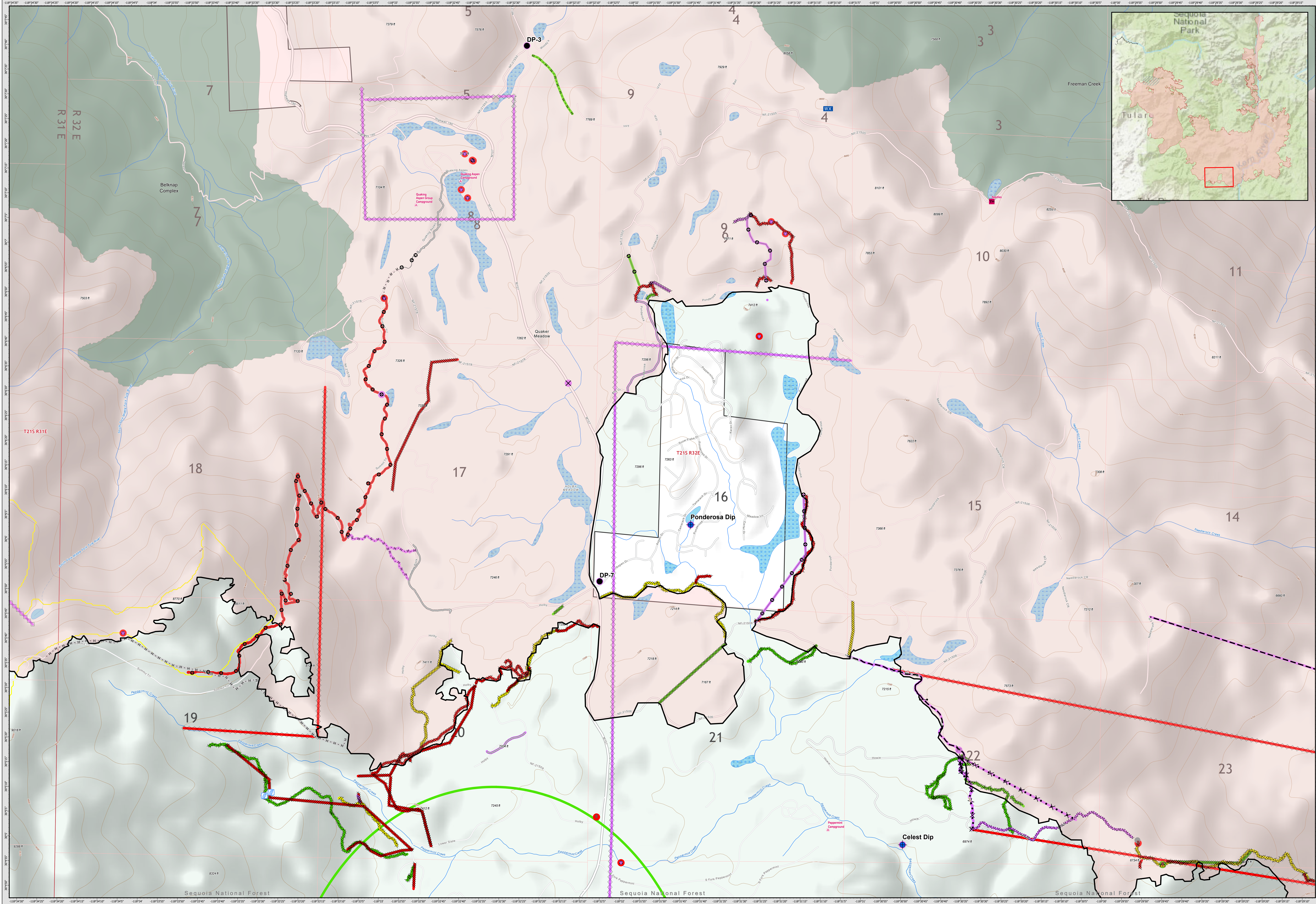


# SUPPRESSION REPAIR PONDEROSA

11/07/2020

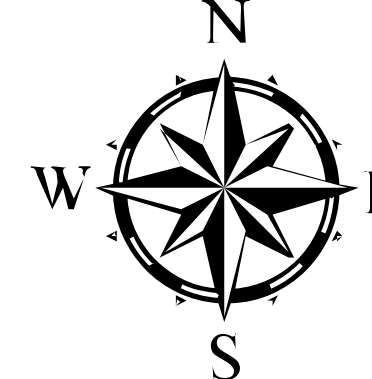
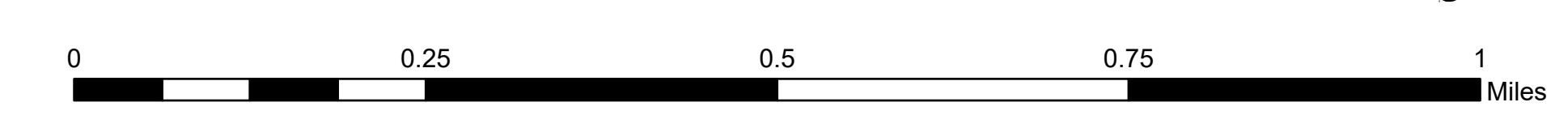


Administrative Forest	In Progress	Repair Needed	Fire Break Planned or Incomplete	Drop Point	BLM
Wilderness Area	Repair Needed	No Repair Needed	Planned Fire Line	Dozer Push	BOR
Administrative Forest	No Repair Needed	Other - See Comments	Air Tanker Retardant	Gate	FS
Slate Mtn Botanical Area	Other - See Comments	Unknown	Other	Mobile Weather Unit	FWS
<b>Repair Status</b>	Unknown	Contained Line	Backcountry Structures	Repair Point	NPS
Completed - Inspected	In Use - Fire Management	Completed Dozer Line	Dip Site	Safety Zone	State
In Use - Fire Management	Completed - Ready for Inspection	Completed Hand Line	Stream Crossing	Closure	Private
Completed - Ready for Inspection	In Progress	Access or Improved Road	Bridge	Wildfire Daily Fire Perimeter	Private
		Proposed Dozer Line	Closure	BIA	

**SUPPRESSION REPAIR**  
**Ponderosa**  
 SQF Complex  
 CA-SQF-002622  
 11/07/2020



171,032 acres,  
 as of 11/06/2020, 0900HRS



1:7,000

Map Updated: 11/6/2020 7:29