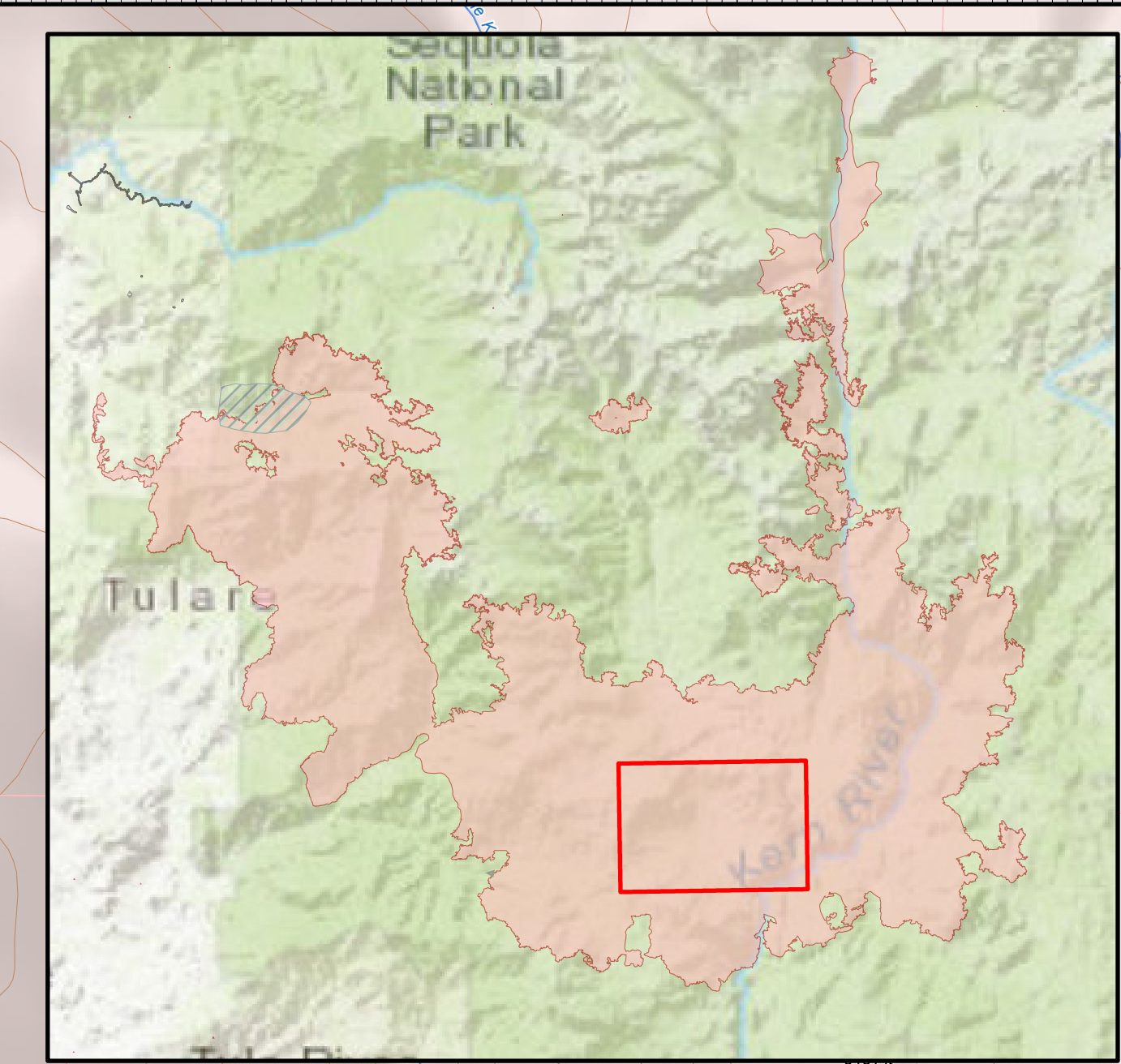
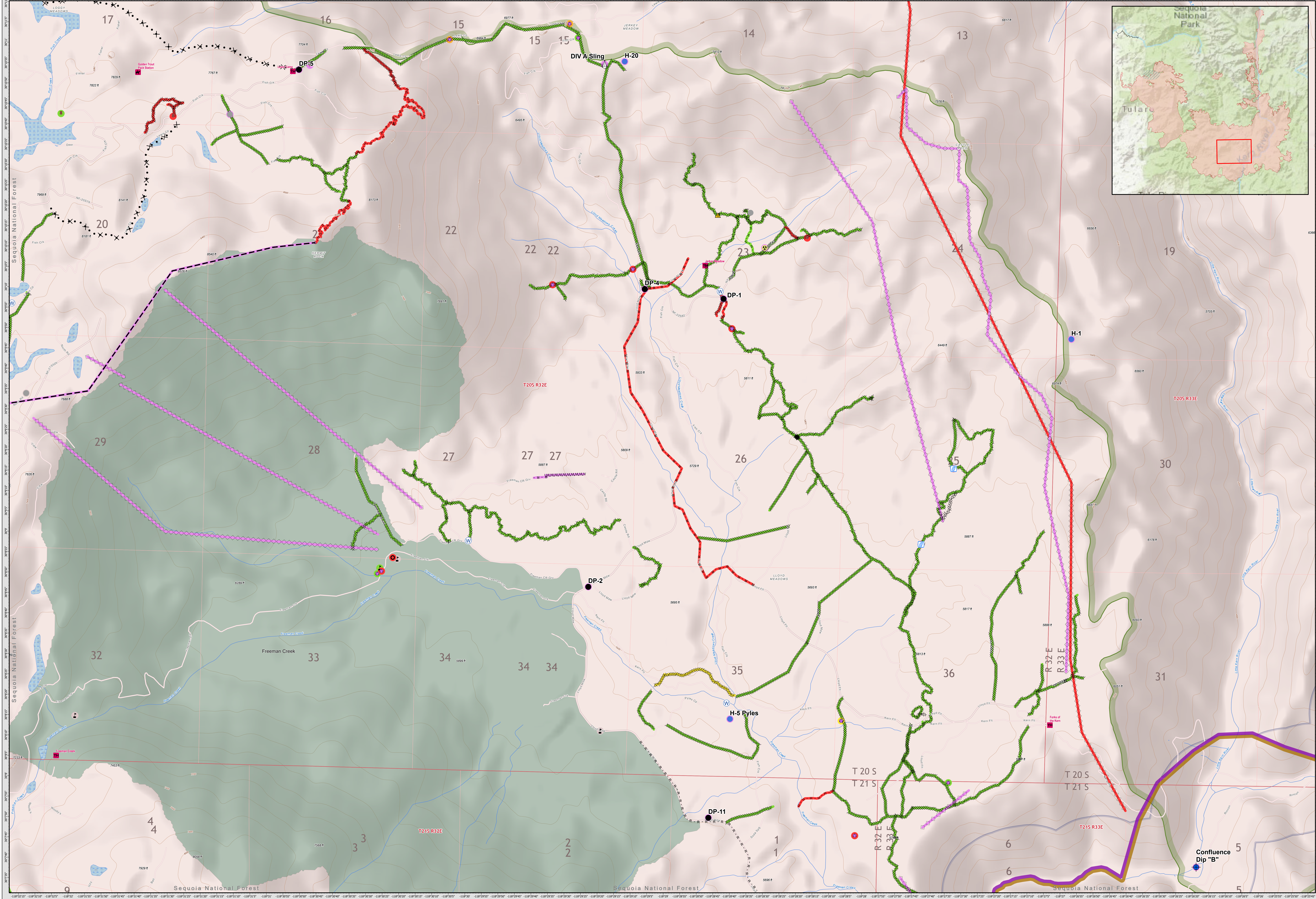


SUPPRESSION REPAIR LLOYD MEADOWS FREEMAN CREEK

11/08/2020



| | | | | | |
|---|--|---|---|---|---|
| <ul style="list-style-type: none"> Administrative Forest Wilderness Area Administrative Forest Slate Mtn Botanical Area | <ul style="list-style-type: none"> Completed - Ready for Inspection In Progress Repair Needed No Repair Needed Other - See Comments Unknown Completed - Inspected In Use - Fire Management Completed - Ready for Inspection | <ul style="list-style-type: none"> In Progress Repair Needed No Repair Needed Other - See Comments Unknown Completed Dozer Line Completed Hand Line Road as Completed Line Proposed Dozer Line Fire Break Planned or Incomplete | <ul style="list-style-type: none"> Planned Fire Line Aerial Retardant Drop Air Tanker Retardant Safety Zone Sling Site Stream Crossing Culvert Water Source Value at Risk Drop Point Dozer Push Hazard BIA | <ul style="list-style-type: none"> Helispot Repair Point Safety Zone Sling Site Stream Crossing Culvert Water Source Value at Risk Drop Point Dozer Push Hazard BIA | <ul style="list-style-type: none"> BLM BOR FS FWS NPS State Private Wildfire Daily Fire Perimeter Private Label_Point |
|---|--|---|---|---|---|

SUPPRESSION REPAIR Lloyd Meadows/Freeman Creek

SQF Complex
CA-SQF-002622
11/08/2020



171,032 acres,
as of 11/06/2020, 0900HRS

