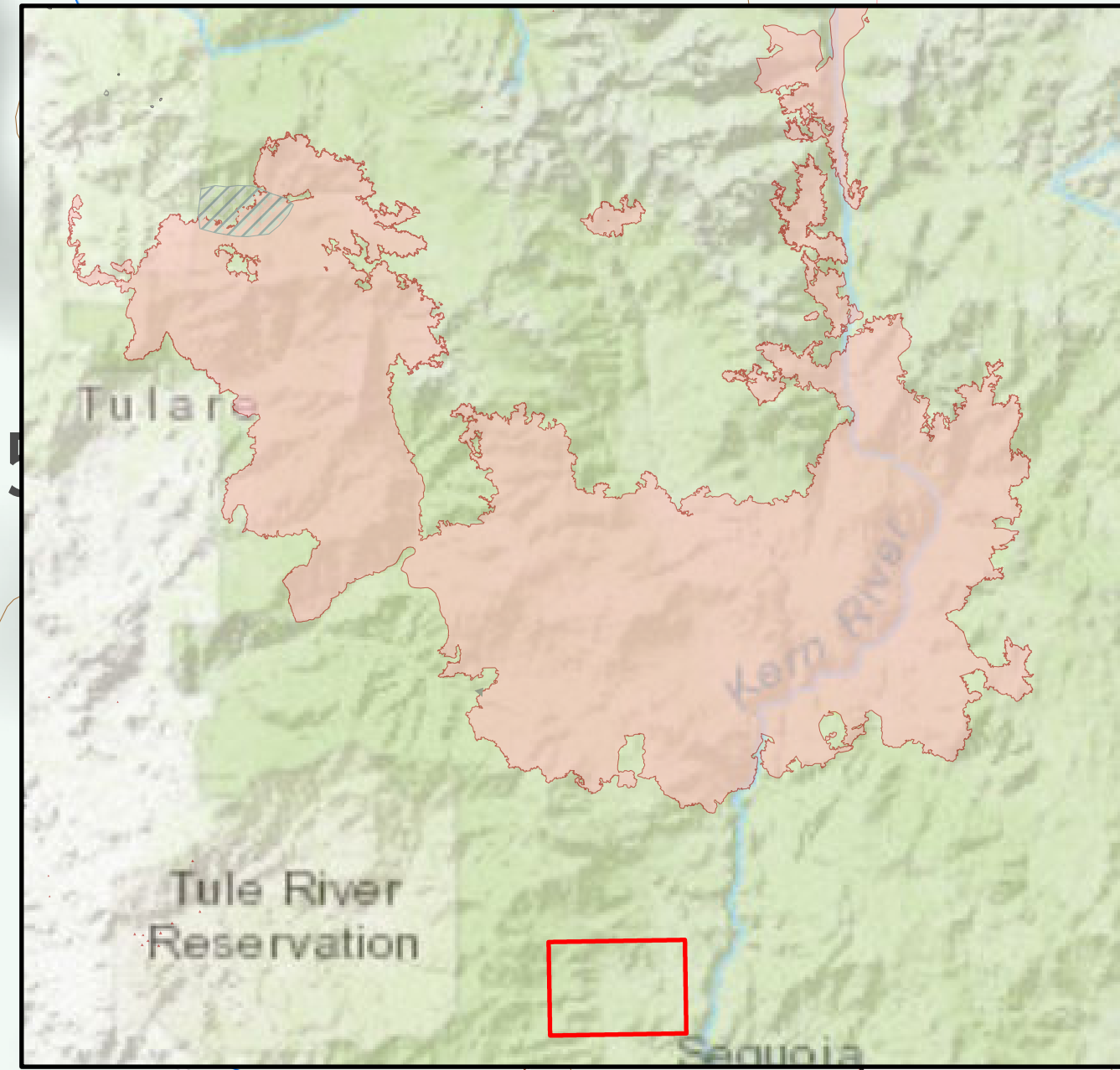
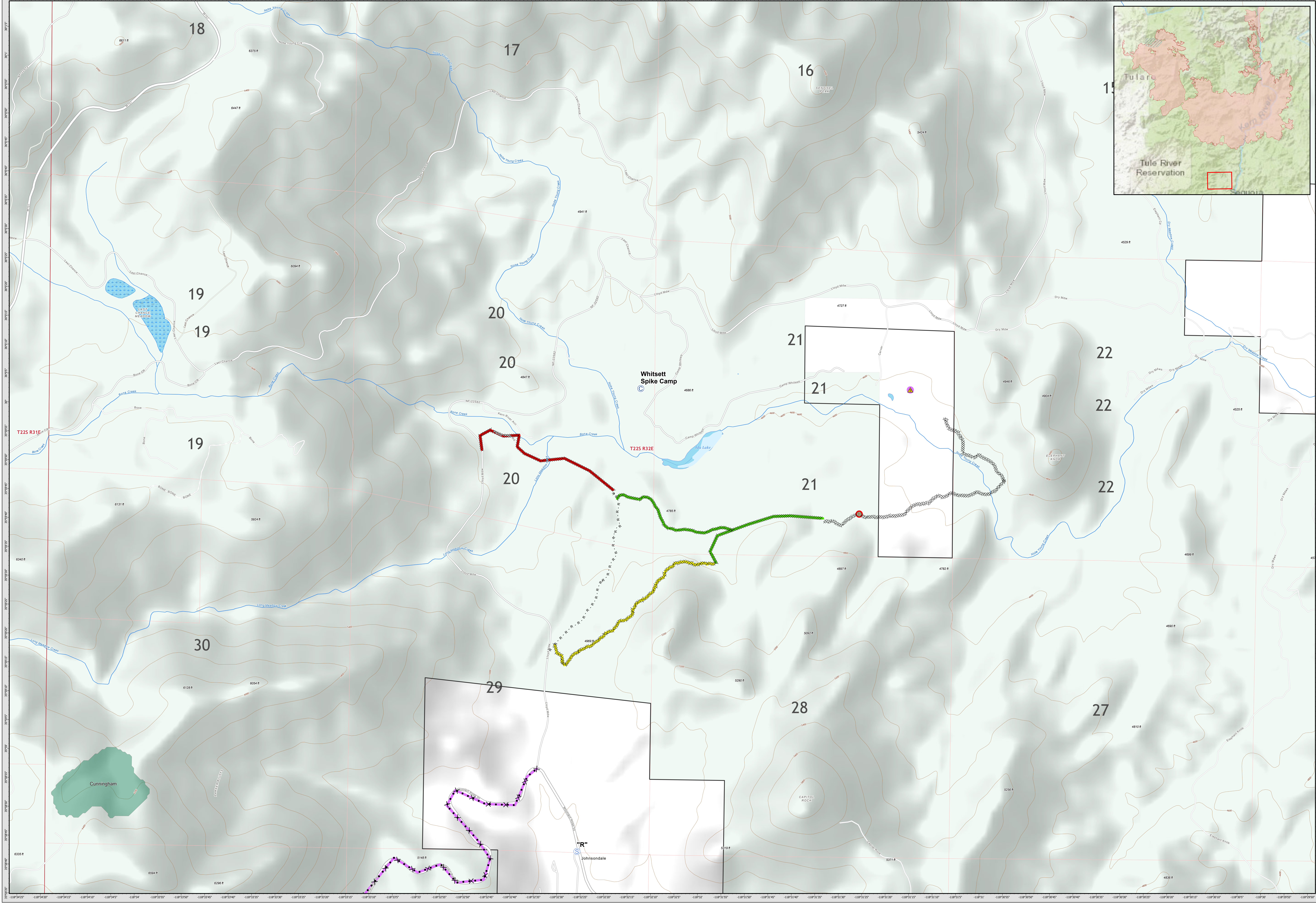


SUPPRESSION REPAIR WHITSETT SPIKE CAMP

11/09/2020



Administrative Forest	Completed - Ready for Inspection	Repair Needed	Unknown	Proposed Dozer Line	BLM
Wilderness Area	In Progress	No Repair Needed	Completed Dozer Line	Road as Completed Line	BOR
Administrative Forest	Other - See Comments	Other - See Comments	Completed Dozer Line	Road as Completed Line	FS
Slate Mtn Botanical Area	Other - See Comments	Other - See Comments	Completed Dozer Line	Road as Completed Line	FWS
Repair Status	Completed - Inspected	In Use - Fire Management	Completed - Inspected	In Use - Fire Management	NPS
In Use - Fire Management	In Use - Fire Management	In Use - Fire Management	In Use - Fire Management	In Use - Fire Management	State
In Use - Fire Management	In Use - Fire Management	In Use - Fire Management	In Use - Fire Management	In Use - Fire Management	Private
In Use - Fire Management	In Use - Fire Management	In Use - Fire Management	In Use - Fire Management	In Use - Fire Management	Private

Proposed Dozer Line	BLM
Backcountry Structures	BOR
Fence - Cut/Damaged	FS
Camp	FWS
Safety Zone	NPS
Staging Area	State
BIA	Private
BIA	Private

SUPPRESSION REPAIR Whitsett Spike Camp

SQF Complex
CA-SQF-002622
11/09/2020

171,031 acres,
as of 11/08/2020, 0900HRS

1:6,000
Map Updated: 11/7/2020 7:51