

# SEQUOIA COMPLEX

## Incident Action Plan

CA-SQF-0 02622 P5NG5P (0513)



### **OPERATIONAL PERIOD**

Wednesday—September 9, 2020

Thursday—September 10, 2020

0600 to 0600



## **Values at Risk**

### **Firefighters and Public Safety**

#### **Communities**

- Ponderosa
- Camp Nelson
- Pyles Boys Camp
- Rogers Camp
- Sequoia Crest
- Cedar Slope
- Alpine Valley
- Redwood Drive
- Lloyd Meadows
- Mountain Aire
- Pierpoint
- Coy Flat

### **Infrastructure**

- Osa Meadows
- Beck Meadows
- USGS Seismic Station
- High-Use Recreation Areas
- Campgrounds
- Trailheads
- Facilities

#### **Natural Resources & Cultural Values**

- Freeman Giant Sequoia Grove
- Little Kern Golden Trout Habitat
- Mountain Yellow Legged Frog Habitat
- Sierra Nevada Bighorn Sheep Habitat
- Archaeological and Cultural Resources
- Riparian Areas

<b>INCIDENT OBJECTIVES</b>	1. Incident Name <b>SEQUOIA COMPLEX</b>	2. Date Prepared 9/8/2020	3. Time Prepared 1600
	<b>4. Operational Period</b>		
September 9, 2020 0600 to September 10, 2020 0600			
<b>5. General Control Objectives for the Incident</b>			
<ul style="list-style-type: none"> <li>• Limit growth of the Castle Fire by establishing a holding line that is safe for firefighters and offers high probability of success to keep the fire: <ul style="list-style-type: none"> <li>○ North of Durr Wood Camp</li> <li>○ South of Sequoia Kings Canyon Wilderness Boundary</li> <li>○ East of Highway 190 to Summit Trail</li> <li>○ West of Toowa Range to King Fisher Ridge to 22S05 Road</li> </ul> </li> <li>• Monitor the spread/growth of the Shotgun Fire using air operation assets.</li> <li>• Protect and minimize impacts to identified values at risk including the communities of Ponderosa, Camp Nelson, Pyles Boys Camp, Rogers Camp, Cedar Slope, Sequoia Crest, Alpine Valley, Redwood Drive, Lloyd Meadows, Mountain Aire, Pierpoint, and Coy Flat, as well as infrastructure at Freeman Giant Sequoia Grove, Osa and Beck Meadows, trailheads and facilities.</li> <li>• Coordinate with the Sequoia NF Duty Officer on support to any new initial attack.</li> </ul>			
<b>6. Management Objectives</b>			
<ul style="list-style-type: none"> <li>• Implement suppression actions that have a high potential for success, carefully weighing risk exposure to firefighters.</li> <li>• Provide for the safety of firefighters, aviation and public through clear communication. Ensure an understanding of strategies and tactics, including a clearly defined and obtainable end state, in order to facilitate sound risk mitigation decision making.</li> <li>• Implement social distancing and adhere to the “module of one” concept to reduce physical exposure and transmission of COVID-19, to provide for the health and safety of all incident personnel.</li> <li>• Minimize to the extent feasible smoke exposure to firefighters, communities and other affected areas to reduce susceptibility to the consequences from COVID-19 exposure.</li> <li>• Maintain and strengthen relationships with partner agencies, stakeholders, cooperators, community leaders, and local agencies utilizing most effective platforms available.</li> <li>• Minimize adverse effects from suppression actions on riparian areas, wetlands, Little Kern Golden Trout, Mountain Yellow Legged Frog, and Sierra Nevada Bighorn Sheep habitats.</li> <li>• Minimize impacts to Wilderness areas; use minimum impact suppression tactics (MIST) by utilizing trails, streams, ridges and natural barriers when possible for control lines.</li> </ul>			
<b>7. Commander’s Intent</b>			
<ul style="list-style-type: none"> <li>• <b>Safety:</b> Address fire fighter, public, and aviation safety through hazard/exposure mitigation.</li> <li>• <b>Communication:</b> We will keep the Agency Administrators informed of significant accomplishments and issues.</li> <li>• <b>Risk Management:</b> We will use a robust risk assessment process to mitigate unnecessary risk to fire fighters and update and/or revise decisions as necessary.</li> <li>• <b>Human Resources:</b> We will ensure that all incident personnel be treated with dignity and respect. We have a zero tolerance for harassment, alcohol, or illegal drug use.</li> <li>• <b>Operations:</b> We will make informed tactical decisions engaging the fire in the right locations with the appropriate resources.</li> <li>• <b>Public Information:</b> We will provide timely and accurate information through the press, meetings, trap lines, briefings, and social media.</li> <li>• <b>Stakeholders:</b> We will coordinate with the delegating agencies to identify key partners and keep them effectively informed of progress and to use their local knowledge.</li> <li>• <b>Finance:</b> We will establish and monitor cost effective methods for accomplishing incident objectives.</li> </ul>			
<b>8. ATTACHMENTS (X IF ATTACHED)</b>			
<input checked="" type="checkbox"/> Organization List - ICS 203		<input checked="" type="checkbox"/> Medical Plan - ICS 206 [ ] _____	
<input checked="" type="checkbox"/> Division Assignment Lists - ICS 204		<input checked="" type="checkbox"/> Unit Log 214 [ ] _____	
		<input checked="" type="checkbox"/> WF206 8 Line [ ] _____	
<b>9. Prepared By (Planning Section Chief)</b>		<b>10. Approved By (Incident Commander)</b>	
Rob Carlin PSC1 (t)		Michael Goicoechea IC	

ORGANIZATION ASSIGNMENT LIST				Operations Section	
1. Incident Name		Sequoia Complex		Field Operations	Scott Schrenk / Andy James (t)
2. Date Prepared	9/8/2020	3. Time Prepared	1700	Planning Operations	Brent Olson 406.249.4994 / Shawn Borgen (t)
4. Operational Period				Branch I Director	Justin Kaber
September 9, 2020 to September 10, 2020		0600 to 0600		Branch V Director	Ryan Butler
Incident Commander and Staff				Structure Branch	Drew Daily
Incident Commander	Mike Goicoechea			Branch I	
Deputy	Mark Goeller / Greg Poncin			Alpha	Kate Airhart
Safety Officer	Tony Petrilli 406.370.5996 / Todd Mott (t)			Bravo	Rocky Wagoner
Information Officer	Jeannette Smith 406.544.0131			Charlie	Unstaffed
Liaison Officer	Rob Taylor 406.544.4679			Golf	Unstaffed
Agency Representative				Swing	Jon Norman
SQF AA	Constance Cummins / Ann Niesen (t)			Yankee / Zulu	Stryker Clark / Jerry Olson (t)
SQF AR	Al Watson			Branch V	
SQF READ	Adam Barnett 760.920.8104			Black Rock / Backcountry	Geoff Farinholt / Richard Baker (t)
INF AR	David Andersen			India	Unstaffed
INF AA	John (Pancho) Smith			Lima / X-Ray	Mike King / Graydon Galloway (t)
INF READ	Adam Barnett 760.920.8104			November	Unstaffed
SEKI AA	Lee Taylor			Uniform	Unstaffed
SQF Chief 1	Angie Sanchez-Hand				
Sequoia & Kings NPS	Dan Morford				
Tulare Co FD	Jeff McLaughlin			Structure	
SoCAL Edison	Troy Whitman			Lloyd	Bryan Duffy
CHP	Chad Patton			Nelson	Hunter Seaborn Bell, III
Tribal Liaison	Dirk Charley 559-554-5433			Ponderosa	Brad Allen
Tule River Tribe – FMO	Zane Santos 559.339.8686				
Planning Section				Night	
Section Chief	Robin Jermyrn 406.360.5936 / Rob Carlin (t)			Night	John Lange (t)
Deputy	Rob Gump 850.688.7623				
Situation Unit	Derek Trauntvein 307.430.8598 Lance Robinson 208.421.5969				
Demobilization Unit	Tanya Murphy 951.235.1568				
Resources Unit Leader	Anya Moline 406.366.1979 / Anthony Watts (t)				
Status Check-in	Faith Ann Heinsch 858.204.7419				
Fire Behavior Analyst	Brian Anderson 406.660.0450 / David Greathouse				
Long-Term Analyst	LaWen Hollingsworth 406.552.5440 / Alicia Reiner (t)			Air Operations Branch	
GIS Specialist	Erin Heiselmann 406.546.4014 Nate Meyer 307.761.1541 / McIntyre Murphy (t)			Air Operations Branch Director	Dennis Morton 406.660.2318
Computer Specialist	Tim McCracken 303.859.7753 / John Vaisa (t)			Air Support Group Supervisor	
Meteorologist	Dan Byrd 240.778.4278			Air Tactical Group Supervisor	Tony Duprey
Human Resource	Debby Hassel 406.274.7985			Finance Section	
Training Specialist	Heather Grove / Matt Boss (t) 951.314.1427			Section Chief	Amy Schrenk 406.830.5214
Logistics Section				Time Unit	Marta Lujan 970.275.3120
Section Chief	Charlie Showers 406.370.3787 / Roylene Gaul Jim Evanoff 406.223.8660 / LeRoy Evans (t)			Equipment Time	Lynda Pike 406.382.0086
Ordering Manager	Rita Lind 310.650.1222 or 423.534.9699 Kristin Troop (virtual)			Personnel Time	Tama Lester 580.212.1017
Supply Unit	Josh King 406.855.0984 / Brent Elmore (t)			Cost Unit	Khon Viengkham 703.217.7269
Facilities Unit	James Andruzzi 917.443.2556 Bill Fitch / Matt LaTray			Procurement Unit Leader	Dana Bangart 406.360.0029
Base Camp	Patrick Beers (t) 253.318.7992			Comps / Claims	Leon Augustine 406.363.8956 Shannon Maxwell (t) 406.366.3724
Ground Support Unit	Keith Windell 213.503.4243			IBA	Nancy Gibson
Communications Unit	Dustin Sene 406.581.9816				
Communications Tech	Trent Coppinger				
Medical Unit	Emily Ellick-Flettire 405.593.3369 / Brett Clymer			Prepared by:	Anya Moline - RESL

## **SAFETY AND HUMAN HEALTH MESSAGE**

### **Accountability: What is it?**

**Accountability-** Refers to an obligation or willingness to accept responsibility for one's actions. ... When individuals are accountable, they understand and accept the consequences of their actions for the areas in which they assume responsibility.

**Accountability-** eliminates the time and effort you spend on distracting activities and other unproductive behavior. When you make people **accountable** for their actions, you're effectively teaching them to value their work. When done right, **accountability** can increase your team members' skills and confidence.

### **Accountability=Trust!**

#### **What Does Accountability Look Like?**

Leaders can be pacesetters and demonstrate accountability by exhibiting the following behaviors:

**Discipline** - staying on track and not getting derailed by competing priorities or desires.

**Integrity** – being honest about the likelihood of delivering on commitments and acknowledging when you might come up short.

**We are a team; we have all accepted the assignment; we're being tested right now. All of us.**

**We need you guys here; we need you to follow the guidelines. We need every person we can get right now to do this job. We need you healthy. Take the time to consider your part in the accountability chain and how you/we/us can improve.**



# FIRE WEATHER FORECAST



**FORECAST NO:** 16  
**PREDICTION FOR:** Sept 9-10, 2020 0600-0600

**INCIDENT NAME:** Sequoia Complex

**UNIT:** CA-SQF  
**SIGNED:** *Dan Byrd*

**TIME AND DATE**  
**FORECAST ISSUED:** Tue, Sep 8 @ 2000 hours

**Incident Meteorologist – Dan Byrd**

**WEATHER DISCUSSION:** The upper low will continue to be centered over the four corners region to the east of the fire today, but will slowly begin to move northeast tonight into Thursday. Today will be the coolest day of the week, with the ridge winds becoming southwesterly later this morning or early afternoon. High pressure ridging will begin to move into the region on Thursday and re-establish itself over the region by Thursday night into Friday. Expect temperatures to become hotter, with more diurnally driven winds Friday into the weekend.

**SKY/WEATHER TODAY (WEDNESDAY):** Sunny, cooler, dry and smoky. Depending on the smoke from the Creek Fire, expect an inversion break by 1300-1400.

**MAX TEMPERATURES / MIN RELATIVE HUMIDITY:**

**5000 FT:** 80 to 86 degrees (Down 5-7 Degrees) / 15 to 20% (Down 2-4%)

**7000 FT:** 70 to 77 degrees (Down 5-7 Degrees) / 20 to 25% (Down 2-4%)

**EYE LEVEL WINDS:**

**Slope/Valley:** Morning drainage winds will become south to southwest after 1200-1300 with speeds 4 to 6 gusts to 10 G16 mph. Winds will continue to be heavily impacted by local terrain and shading from the smoke.

**Ridges:** Northwest 5 to 10 mph becoming southwest 5 to 10 G15 mph in the early afternoon.

**MIXING HEIGHT...**8,000 FT AGL **VENTILATION...** Good

**TRANSPORT WIND...**Northwest around 5 mph in the morning, shifting to the southwest in the afternoon 10 to 15 mph.

**CWR (0.10")...**0% **LAL...**1 **HAINES...**4

**SKY/WEATHER TONIGHT (WEDNESDAY NIGHT):** Mostly clear and cooler with heavy smoke in the Kern River Valley. North to northeast 3 to 6 mph. Squirrely winds could occur near the confluence of the Little Kern/Kern Rivers. Overnight RH recoveries will remain poor.

**MIN TEMPERATURES / MAX RELATIVE HUMIDITY**

**5000 FT:** 53 to 58 degrees (Down 4-6) / 20 to 25% (Steady)

**7000 FT:** 55 to 60 degrees (Down 4-6) / 20 to 25% (Steady)

**EYE LEVEL WINDS:**

**Slope/Valley:** North to northeast 3 to 6 mph.

**Ridges:** Northwest 10 mph.

**CWR (0.10")...**0% **LAL...**1

**THURSDAY:** Inversion lifting by 1100-1200. Mostly sunny, warming temperatures but smoky, with continued low RH.

**Max Temps:** 75 to 89. **Min RH:** 12 to 17%. **Winds: Slope/Valley:** Morning drainage winds becoming south to southwest 5-10 G14 mph in the afternoon. **Ridge:** Northwest 5 to 8 mph becoming southwest 5 to 10 G15 mph in the afternoon.

**LAL:** 1 **CWR (0.10"):** 0% **MIXING HEIGHT:** 8,000 FT AGL **HAINES:** 4

**OUTLOOK for FRIDAY Through SUNDAY:**

**FRIDAY:** Mostly Sunny. **High Temp:** 78-94. **Ridge Wind:** S-SW 6-10 mph.

**SATURDAY:** Mostly Sunny. **High Temp:** 80-97. **Ridge Wind:** SW 8-12 mph.

**SUNDAY:** Mostly Sunny. **High Temp:** 83-100. **Ridge Wind:** SW 8-12 G20 mph.

# FIRE BEHAVIOR FORECAST

FORECAST NUMBER: 19

TYPE OF FIRE: Wildland

FIRE NAME: Sequoia Complex

OPERATIONAL PERIOD: 9/9/2020: 0600-0600

DATE ISSUED: September 8, 2020

TIME ISSUED: 1800

UNIT: CA-Sequoia National Forest

SIGNED: /s/ David Greathouse FBAN

## WEATHER

**\*\*A Little Cooler Today, but still smoky\*\***

(See Weather forecast for details)

**Weather thresholds for large fire growth: Temp: >83 deg, RH <20%, 20ft winds >7mph**

**Rule of Thumb – To figure 20' winds, divide the observed eye level winds by .4**

## FUELS

**Fuels-** The fuels that dominate the Castle fire are primarily mixed conifer with a heavy component of dead and down material. In the lower elevations and especially in the fire scars, a mix of shrub and grass/shrub can be found. Heavy pockets of beetle killed timber can also be found throughout the fire area. The fuels in the Shotgun fire are primarily grass and grass/shrub. The fuels are very dry for this time of year. The ERC's are currently above the 97<sup>th</sup> percentile, and the 100-hr and 1000-hr fuels are at 5% and 8%. These indices indicate that all dead fuel will contribute to fire intensity.

**Topography-** Topography in the fire area is dominated by the Kern River. This river drainage runs north/south and is steep and narrow, roughly bisecting the fire area down the middle. Terrain has played a central role in fire spread, taking the predominantly SW flow and directing it in every way imaginable across the fire area.

## FIRE BEHAVIOR

**Maximum Fire Potential (Assuming head fire, FDFM 3%, 20' windspeed 6-10mph, 30% slope)**

	Max Rate of Spread	Max Flame Lengths
<b>Grass</b>	10-15 ch/hr	6-8'
<b>Grass/Shrub</b>	15-25 ch/hr	5-8'
<b>Timber</b>	12-18 Ch/hr	3-5'

**Rule of Thumb: Cut head fire flame lengths in half for flanking fire, backing fire 2'-4' flame lengths**

**All Divisions:** Smoke from the Creek fire should keep fire behavior moderated today. **HOWEVER**, if the skies clear, active fire behavior will be seen on all divisions today. Expect active surface fire spread with occasional single tree and group tree torching. In areas where wind and slope align, short crown fire runs can be observed. Spotting is probable in all fuel types today. Expect burning conditions to increase around 1000, peak between 1600-1700 before moderating after sunset. Spotting can be observed up to ½ mile today with a probability of ignition between 60% - 80%

**Div A/Z** – Expect the fire to continue to flank west further into the Freeman Creek Sequoia Grove today. The wind is in your favor today, so I do not expect spotting. However, pay attention to the southern end of your fire. Do not let the lower end of the fire outpace the top. If this occurs, you can expect uphill crown fire runs even under the smoke blanket.

**Div L** – If the smoke clears out, you can expect active fire behavior today in your division. This will push the fire further east towards Beach Meadows and Blackrock Ranger station. **REMEMBER:** the weather forecast calls for a wind shift to the SW later in the day. If this happens and the smoke conditions are favorable. The north end of the finger in Soda Creek will be exposed.

**Div B** – Expect the fire to continue to move west against the wind. Forward progress by the end of shift could match what was seen yesterday.

**Shotgun Fire** The fire is following mainly brush fuels with short uphill runs when established on the lower 1/3 of the slope. Spread is not likely to be significant due to the lack of surface fuels.

## AIR OPERATIONS

Smoke may have an impact on air operations today

## SAFETY

Look Up, Look Down, Look all around! Pay attention to the indicators in the fire environment that cause problem fire behavior! (IRPG page 2)

DIVISION ASSIGNMENT LIST			Branch			Division/Group			
Incident Name			I			ALPHA			
SEQUOIA COMPLEX			Operational Period						
			Date: 9/9/2020 to 9/10/2020			Time: 0600-0600			
Operations Personnel									
Operations Chief		Brent Olson, Scott Schrenk Andy James (t) Shawn Borgen (t)			Branch Director		Justin Kaber 406-250-1455		
Air Operations		Dennis Morton Dan Sepulveda			Division/Group Supervisor		Kate Airhart 406-360-0506		
Safety Officer		Tony Petrilli, Todd Mott (t) Dan Cassidy							
Resources Assigned This Period									
Strike Team/Task Force/ Resource Designator	Req#	Last Shift	Leader	# Persons	Drop Off Point /Time	Pick Up Point / Time			
HC1 Vista Grande	C-54	9/12	Jess Estrada	19	Whitsett Base 0600	Whitsett Base 2100			
HC2 Patrick1	C-90	9/19	Joshua Chilest	20	Whitsett Base 0600	Whitsett Base 2100			
WFM Sequoia	O-266	9/12	Aaron Woodyard	8	Whitsett Base 0600	Whitsett Base 2100			
TFLD (t)	O-336	9/14	Scott Turner	1	Whitsett Base 0600	Whitsett Base 2100			
ENG6 High Desert	E-137	9/12	Thomas Hanks	3	Whitsett Base 0600	Whitsett Base 2100			
ENG6 Red Dog	E-167	9/12	Tim England	2	Whitsett Base 0600	Whitsett Base 2100			
WTT2 K&B	E-48	9/14	Mike Morgan	1	Whitsett Base 0600	Whitsett Base 2100			
WTT2 49ers	E-50	9/10	Steve Smith	1	Whitsett Base 0600	Whitsett Base 2100			
WTT2 SQF WT2	E-114	9/9	Jaime Ayaly	2	Whitsett Base 0600	Whitsett Base 2100			
WTT2 CNF WT222	E-145	9/12	Andrew Peterson	2	Whitsett Base 0600	Whitsett Base 2100			
DOZ2 Westlund	E-139	9/12	Alan Westlund	2	Whitsett Base 0600	Whitsett Base 2100			
DOZ2 ANF 12	E-142	9/10	Doug Lander	2	Whitsett Base 0600	Whitsett Base 2100			
EXC2 Sandborg	E-179	9 /13	Chuck Sandborg	2	Whitsett Base 0600	Whitsett Base 2100			
EXC2 Denis Equip	E-188	9/15	Anthony Pezzi	2	Whitsett Base 0600	Whitsett Base 2100			
GRD2 Kirklang	E-97	9/9	Todd Adams	2	Whitsett Base 0600	Whitsett Base 2100			
CHIP1 Siskiyou	E-184	9/16	Dennis Lange	2	Whitsett Base 0600	Whitsett Base 2100			
CHIP1 Wyeas Forestry	E-192	9/16	Ryan Grigsby	2	Whitsett Base 0600	Whitsett Base 2100			
MAST Shannon Bros	E-186	9/13	Chuck Sandborg	1	Whitsett Base 0600	Whitsett Base 2100			
FALM Tree Guys	O-178	9/9	Chase Bishop	2	Whitsett Base 0600	Whitsett Base 2100			
SOFR	O-183	9/11	Joseph Fowler	1	Whitsett Base 0600	Whitsett Base 2100			
SOFR (t)	O-171	9/9	Eric Klemowicz	1	Whitsett Base 0600	Whitsett Base 2100			
REMS1	O-332	9/13	REMS	4	Whitsett Base 0600	Whitsett Base 2100			
REAF	O-277	9/11	Scott Dailey	1	Whitsett Base 0600	Whitsett Base 2100			
REAF (t)	O-398	9/17	Noah Hirsch	1	Whitsett Base 0600	Whitsett Base 2100			
Work Assignments									
<p><b>Task:</b> Evaluate fire progression of the slop over between DP 5 and H20, develop a suppression plan and implement. Coordinate suppression actions with Y/Z and B. Take action to prevent fire from moving into the identified areas of values to be protected.</p> <p><b>Purpose:</b> Keep the fire spread east of Lloyd Meadow Road, north of Ponderosa and Mountain Home community.</p> <p><b>End State:</b> Limit fire spread into additional values at risk to protect communities and infrastructure.</p>									
Special Instructions									
<ul style="list-style-type: none"> <li>Personnel to notify DIVS of potentially sensitive cultural materials.</li> <li>Castle Ambulance 1 staged at Whitsett Base Camp. Castle Ambulance 2 stage at R Ranch Spike. Castle REMS available to all DIVS.</li> <li>Prioritization of all control or containment actions taken during the operational period in this Division will be at the discretion of the DIVS. Actions may have to be taken by the DIVS that are not enumerated in today's IAP. These actions would be a result of a significant change in actual or expected fire behavior over and above that anticipated at the time the IAP was prepared. These actions will be coordinated with and approved by the OSC whenever possible.</li> </ul>									
Division/Group Communication Summary									
Function	Channel	Frequency RX	Frequency TX	TONE RX	TONE TX	Function	Channel	Frequency RX	Frequency TX
COMMAND	1	170.0000	166.6750	151.4	151.4	A/G TAC	13	172.3500	172.3500
NIFC T1	5	168.0500	168.0500	151.4	151.4	A/G CMD	14	169.1500	169.1500
Prepared by Anya Moline – RESL		Approved By Robin Jermyn - PSC				Date 9/8/2020		Time 1800	

DIVISION ASSIGNMENT LIST				Branch		Division/Group				
Incident Name				I		BRAVO				
SEQUIOA COMPLEX				Operational Period						
				Date: 9/9/2020 to 9/10/2020			Time: 0600-0600			
Operations Personnel										
Operations Chief	Brent Olson, Scott Schrenk Andy James (t) Shawn Borgen (t)			Branch Director			Justin Kaber 406-250-1455			
Air Operations	Dennis Morton Dan Sepulveda			Division/Group Supervisor			Rocky Wagoner 406-531-9809			
Safety Officer	Tony Petrilli, Todd Mott (t) Dan Cassidy									
Resources Assigned This Period										
Strike Team/Task Force/ Resource Designator	Req#	Last Shift	Leader	# Persons	Drop Off Point /Time	Pick Up Point / Time				
HC1 Dalton	C-53	9/11	Scott Gorman	19	Whitsett Base 0600	Whitsett Base 2100				
HC1 Cherokee	C-83	9/17	Josh Tester	20	Whitsett Base 1200	Whitsett Base 2100				
WFM Whiskey Flat	O-574	9/18	Travis Clendenen	9	Whitsett Base 0600	Whitsett Base 2100				
TFLD	O-582	9/18	Robert Bundy	1	Whitsett Base 0600	Whitsett Base 2100				
ENG3 Kinsley	E-249	9/18	Kurt Edwards	1	Whitsett Base 0600	Whitsett Base 2100				
ENG6 Buffalo	E-132	9/13	Gregg Webster	3	Whitsett Base 0600	Whitsett Base 2100				
ENG6 R Construction	E-166	9/12	Richard Deroche	3	Whitsett Base 0600	Whitsett Base 2100				
DOZ2 Shannon Bros	E-45	9/14	John Shannon	1	Whitsett Base 0600	Whitsett Base 2100				
FALM Timbersmith	O-177	9/9	Ryan Deniz	2	Whitsett Base 0600	Whitsett Base 2100				
SOFR	O-389	9/16	James Gregory	1	Whitsett Base 0600	Whitsett Base 2100				
EMPF	O-340	9/9	Ron Spellman	1	Whitsett Base 0600	Whitsett Base 2100				
EMPF	O-295	9/14	Nick Stepanian	1	Whitsett Base 0600	Whitsett Base 2100				
REAF	O-524	9/19	Sarah Zaragoza	1	Whitsett Base 0600	Whitsett Base 2100				
REAF (t)	O-395	9/19	Ian Woodruff	1	Whitsett Base 0600	Whitsett Base 2100				
FMOD Swedberg Const.	O-599	9/22	Wade Giguere	2	Whitsett Base 0600	Whitsett Base 2100				
Work Assignments										
<p><b>Task:</b> Scout Mountain Aire Creek to DP-6 and look to build containment line that ties into the 2017 Lion Fire scar. Assess opportunities for containment line to limit fire spread to the south and west. Assess Jordan Peak Lookout and White Meadow Cabin for structure protection needs. Coordinate with Alpha and Yankee/Zulu to ensure a coordinated strategy.</p> <p><b>Purpose:</b> To limit fire spread to the south and west and prevent impacts to surrounding communities.</p> <p><b>End State:</b> Impacts to local communities and infrastructure was kept to a minimum.</p>										
Special Instructions										
<ul style="list-style-type: none"> <li>Personnel to notify DIVS of potentially sensitive cultural materials.</li> <li>Castle Ambulance 1 staged at Whitsett Base Camp. Castle Ambulance 2 stage at R Ranch Spike. Castle REMS available to all DIVS.</li> <li>Prioritization of all control or containment actions taken during the operational period in this Division will be at the discretion of the DIVS. Actions may have to be taken by the DIVS that are not enumerated in today's IAP. These actions would be a result of a significant change in actual or expected fire behavior over and above that anticipated at the time the IAP was prepared. These actions will be coordinated with and approved by the OSC whenever possible.</li> </ul>										
Division/Group Communication Summary										
Function	Channel	Frequency RX	Frequency TX	TONE RX	TONE TX	Function	Channel	Frequency RX	Frequency TX	
COMMAND	1	170.0000	166.6750	151.4	151.4	A/G TAC	13	172.3500	172.3500	
NIFC T3	6	168.6000	168.6000	151.4	151.4	A/G CMD	14	169.1500	169.1500	
Prepared by Anya Moline – RESL		Approved By Robin Jermyn - PSC				Date 9/8/2020			Time 1800	





DIVISION ASSIGNMENT LIST			Branch			Division/Group				
Incident Name			I			YANKEE / ZULU				
SEQUIOA COMPLEX			Operational Period							
			Date: 9/9/2020 to 9/10/2020			Time: 0600-0600				
Operations Personnel										
Operations Chief	Brent Olson, Scott Schrenk Andy James (t) Shawn Borgen (t)			Branch Director			Justin Kaber 406-250-1455			
Air Operations	Dennis Morton Dan Sepulveda			Division/Group Supervisor			Stryker Clark / Jerry Olson (t) 406-546-7405			
Safety Officer	Tony Petrilli Dan Cassidy									
Resources Assigned This Period										
Strike Team/Task Force/ Resource Designator	Req#	Last Shift	Leader	# Persons	Drop Off Point /Time	Pick Up Point / Time				
HC1 Los Padres	C-56	9/13	Matt Aoki	19	Whitsett Base 0600	Whitsett Base 2100				
HC1 Bear Divide	C-66	9/13	Josh Thomas	19	Whitsett Base 0600	Whitsett Base 2100				
WFM Groveland	O-186	9/9	Timothy Markin	8	Whitsett Base 0600	Whitsett Base 2100				
TFLD	C-83.20	9/19	Phil Reid	1	Whitsett Base 0600	Whitsett Base 2100				
TFLD (t)	C-83.3	9/19	Mason Vance	1	Whitsett Base 0600	Whitsett Base 2100				
ENG3 A1Fire E13	E-79	9/12	Wyatt Lawrence	2	Whitsett Base 0600	Whitsett Base 2100				
ENG4 Troy	E-134	9/12	Dan Hokanson	3	Whitsett Base 0600	Whitsett Base 2100				
ENG6 Flame Chaser	E-133	9/14	Duane Many Hides	3	Whitsett Base 0600	Whitsett Base 2100				
WTT2 Dust Busters	E-49	9/10	Nathan Stutz	2	Whitsett Base 0600	Whitsett Base 2100				
WTT2 Central 25	E-146	9/13	Jeff Nevins	2	Whitsett Base 0600	Whitsett Base 2100				
SKG2 Alvord Fire	E-194	9/16	Bernard Saul	2	Whitsett Base 0600	Whitsett Base 2100				
DOZ2 Shannon Bros	E-44	9/14	Bill Shannon	1	Whitsett Base 0600	Whitsett Base 2100				
FALM Timbersmith	O-176	9/9	Keenan Smith	2	Whitsett Base 0600	Whitsett Base 2100				
SOFR (t)	O-234	9/12	Dwayne Johnson	1	Whitsett Base 0600	Whitsett Base 2100				
EMTF	O-579	9/17	Patrick Garcia	1	Whitsett Base 0600	Whitsett Base 2100				
EMPF	O-827	9/20	Tom Zamora	1	Whitsett Base 0600	Whitsett Base 2100				
AMBU	E-170	9/13	Castle 3	2	Whitsett Base 0600	Whitsett Base 2100				
REAF	O-229	9/12	Lanny Flaherty	1	Whitsett Base 0600	Whitsett Base 2100				
Work Assignments										
<p><b>Task:</b> Continue to secure the perimeter between DP-1 and DP-2 to prevent fire movement into Lloyd Meadows. Monitor fire behavior in the Freeman Grove while looking for indirect containment opportunities to the west. Monitor and manage fire effects to the extent possible in the Freeman Grove. Continue mop up where appropriate. Monitor the southwest corner of the Division, focusing on the east side of the Kern River.</p> <p><b>Purpose:</b> Limit fire spread toward values at risk on the west side of the fire.</p> <p><b>End State:</b> Private property and infrastructure is protected, natural resource impacts are limited, and there are no accidents or injuries to firefighters or the public.</p>										
Special Instructions										
<ul style="list-style-type: none"> <li>Personnel to notify DIVS of potentially sensitive cultural materials.</li> <li>Castle Ambulance 1 staged at Whitsett Base Camp. Castle Ambulance 2 stage at R Ranch Spike. Castle REMS available to all DIVS.</li> <li>Crews be prepared to spike.</li> <li>Prioritization of all control or containment actions taken during the operational period in this Division will be at the discretion of the DIVS. Actions may have to be taken by the DIVS that are not enumerated in today's IAP. These actions would be a result of a significant change in actual or expected fire behavior over and above that anticipated at the time the IAP was prepared. These actions will be coordinated with and approved by the OSC whenever possible.</li> </ul>										
Division/Group Communication Summary										
Function	Channel	Frequency RX	Frequency TX	TONE RX	TONE TX	Function	Channel	Frequency RX	Frequency TX	
COMMAND	1	170.0000	166.6750	151.4	151.4	A/G TAC	13	172.3500	172.3500	
NIFC T6	8	166.7750	166.7750	151.4	151.4	A/G CMD	14	169.1500	169.1500	
Prepared by Anya Moline – RESL		Approved By Robin Jermyn – PSC				Date 9/8/2020			Time 1800	

DIVISION ASSIGNMENT LIST				Branch		Division/Group			
Incident Name				V		BLACK ROCK / BACKCOUNTRY			
SEQUIOA COMPLEX				Operational Period					
				Date: 9/9/2020 to 9/10/2020		Time: 0600-0600			
Operations Personnel									
Operations Chief	Brent Olson, Scott Schrenk Andy James (t) Shawn Borgen (t)			Branch Director		Ryan Butler 406-250-0375			
Air Operations	Dennis Morton Dan Sepulveda			Division/Group Supervisor		Geoff Farinholt / Richard Baker (t) 406-529-5671			
Safety Officer	Tony Petrilli, Todd Mott (t) Dan Cassidy								
Division/Group Supervisor									
Strike Team/Task Force/ Resource Designator	Req#	Last Shift	Leader	# Persons	Drop Off Point /Time	Pick Up Point / Time			
ENG3 SQF E-341	E-216	9/15	Merritt Cuttin	5	Troy Meadow 0600	Troy Meadow 2100			
ENG3 Gonzales	E-256	9/18	Steve Reason	3	Troy Meadow 0600	Troy Meadow 2100			
ENG5 Cate Land Fire	E-203	9/16	Vanessa Aldridge	3	Troy Meadow 0600	Troy Meadow 2100			
ENG6 Flame Chaser	E-198	9/20	Edwin Hall	3	Troy Meadow 0600	Troy Meadow 2100			
ENG6 White Horse	E-199	9/15	Jason McGaughy	3	Troy Meadow 0600	Troy Meadow 2100			
ENG6 Late Summers	E-200	9/12	Josh Crollard	3	Troy Meadow 0600	Troy Meadow 2100			
ENG6 Late Summers	E-201	9/12	Brad Beck Jr.	3	Troy Meadow 0600	Troy Meadow 2100			
CHIP	E-191	9/18	Andrew Rackley	2	Troy Meadow 0600	Troy Meadow 2100			
Inyo Packers	E-56 E-57	9/14	Lee Roesser(O-142)	1	Troy Meadows 0600	Troy Meadows 2100			
THSP	O-236	9/10	George Bowan	1	Troy Meadow 0600	Troy Meadow 2100			
EMPF	O-581	9/18	Joshua Terry	1	Troy Meadow 0600	Troy Meadow 2100			
EMPF	O-495	9/16	Scott Hamilton	1	Troy Meadow 0600	Troy Meadow 2100			
EMPF	O-551	9/16	Matthew Heckman	1	Troy Meadow 0600	Troy Meadow 2100			
EMPF	O-497	9/15	Tommy Kavanaugh	1	Troy Meadow 0600	Troy Meadow 2100			
AMBU	E-52	9/21	Castle 2	2	Troy Meadow 0600	Troy Meadow 2100			
<b>Work Assignments</b>									
<p><b>Task:</b> Develop and implement structure protection plan for Black Rock, Bonita Meadow, West Meadow and back country/wilderness structures. Recon Manatchee area. Continue to assess and prep structures in Long Canyon and Casa Vieja.</p> <p><b>Purpose:</b> Protect values at risk from wildfire impacts.</p> <p><b>End State:</b> Values at risk and communities are able to operate in pre-fire condition. A plan to protect values at risk is developed for the Manatchee area.</p>									
<b>Special Instructions</b>									
<ul style="list-style-type: none"> <li>• <b>A/G Tac for Branch Five: RX169.200, TX 169.200. This needs to be hand programmed.</b></li> <li>• Personnel to notify DIVS of potentially sensitive cultural materials.</li> <li>• Castle Ambulance 1 staged at Whitsett Base Camp. Castle Ambulance 2 stage at R Ranch Spike. Castle REMS available to all DIVS.</li> <li>• Prioritization of all control or containment actions taken during the operational period in this Division will be at the discretion of the DIVS. Actions may have to be taken by the DIVS that are not enumerated in today's IAP. These actions would be a result of a significant change in actual or expected fire behavior over and above that anticipated at the time the IAP was prepared. These actions will be coordinated with and approved by the OSC whenever possible.</li> </ul>									
<b>Division/Group Communication Summary</b>									
<b>Function</b>	Channel	Frequency RX	Frequency TX	TONE RX	TONE TX	<b>Function</b>	Channel	Frequency RX	Frequency TX
COMMAND	2	170.6875	166.5750	151.4	151.4	A/G TAC	Must self program	169.2000	169.2000
COMMAND	3	172.5500	162.1875	151.4	151.4	A/G CMD	14	169.1500	169.1500
R5 T5	10	167.1125	167.1125	151.4	151.4				
Prepared by	Approved By			Date			Time		
Anya Moline – RESL	Robin Jermyn - PSC			9/8/2020			1800		

/DIVISION ASSIGNMENT LIST		Branch	Division/Group
Incident Name		V	LIMA / X-RAY
SEQUIOA COMPLEX		Operational Period	
		Date: 9/9/2020 to 9/10/2020	Time: 0600-0600
Operations Personnel			
Operations Chief	Brent Olson, Scott Schrenk Andy James (t) Shawn Borgen (t)	Branch Director	Ryan Butler 406-250-0375
Air Operations	Dennis Morton Dan Sepulveda	Division/Group Supervisor	Mike King / Graydon Galloway (t) 406-370-2121 / 208-546-9653
Safety Officer	Tony Petrilli, Todd Mott (t) Dan Cassidy		

#### Resources Assigned This Period

Strike Team/Task Force/ Resource Designator	Req#	Last Shift	Leader	# Persons	Drop Off Point /Time	Pick Up Point / Time
HC1 Golden Eagles	C-55	9/14	Robert Villegas	18	Troy Meadow 0600	Troy Meadow 2100
HC2 Oak Valley	C-97	9/21	Rafael Torres	19	Troy Meadow 0600	Troy Meadow 2100
WFM Horseshoe	O-1	9/20	Candice Kutrosky	12	Troy Meadow 0600	Troy Meadow 2100
WFM Slate	O-4	9/21	Angel Reyes	10	Troy Meadow 0600	Troy Meadow 2100
WFM Mammoth Lake	O-49	9/22	Jeff Karl	8	Troy Meadow 0600	Troy Meadow 2100
ENG5 Aberasturi	E-202	9/20	Russell Haynes	3	Troy Meadow 0600	Troy Meadow 2100
ENG6 CNF E473	E-263	9/19	Allen Tennant	5	Troy Meadow 0600	Troy Meadow 2100
SKD McKellar	E-214	9/17	Harley Toller	2	Troy Meadow 0600	Troy Meadow 2100
DOZZ	E-5	9/21	Tyler Muth	1	Troy Meadow 0600	Troy Meadow 2100
DOZZ	E-140	9/11	David Krisher	2	Troy Meadow 0600	Troy Meadow 2100
CHIP	E-189	9/17	Don Kelley	1	Troy Meadow 0600	Troy Meadow 2100
EXCA	E-187	9/18	Kody Williams	1	Troy Meadow 0600	Troy Meadow 2100
SKD1 McKellar	E-193	9/18	Brett Strong	1	Troy Meadow 0600	Troy Meadow 2100
FALM Under Dog	O-596	9/18	Gary Balmain	2	Troy Meadow 0600	Troy Meadow 2100
SOF2	O-496	9/16	Tom Nash	1	Troy Meadow 0600	Troy Meadow 2100
SOFR (t)	O-393	9/16	Jacob Broiller	1	Troy Meadow 0600	Troy Meadow 2100
REMS2	E-217	9/19	Ray Storm	6	Troy Meadow 0600	Troy Meadow 2100
EMPF	O-551	9/16	Matthew Heckman	1	Troy Meadow 0600	Troy Meadow 2100
EMPF	O-91	9/15	Royce Copeman	1	Troy Meadow 0600	Troy Meadow 2100
EMPF	O-342	9/15	Yoshimi Toyota	1	Troy Meadow 0600	Troy Meadow 2100
REAF	O-252	9/11	Adam Toomey	1	Troy Meadow 0600	Troy Meadow 2100
REAF	O-228	9/12	Michael McGraw	1	Troy Meadow 0600	Troy Meadow 2100
REAF	O-231	9/11	Dan Swanson	1	Troy Meadow 0600	Troy Meadow 2100
REAF	O-522	9/19	Donna Peppin	1	Troy Meadow 0600	Troy Meadow 2100

#### Work Assignments

**Task:** Prep Blackrock road from Blackrock Ranger Station north. Improve indirect dozer lines. Scout for holding features off the Blackrock road to the west north of Blackrock Ranger Station. Monitor Div X-Ray from the air and utilize air resources as needed to keep green islands from impacting control lines west of H-4. Assess the need to insert personnel into H-4 if fire crosses containment lines. Assist with point protection as needed.

**Purpose:** Limit impact to values at risk on northern edge within wilderness, limit fire spread on eastern and southern edge of fire.

**End State:** Values at risk are not impacted by fire. The Spread of fire to the south and east is limited in Divisions L and X-Ray.

#### Special Instructions

- **A/G Tac for Branch Five: RX169.200, TX 169.200. This needs to be hand programmed.**
- Personnel to notify DIVS of potentially sensitive cultural materials.
- Castle Ambulance 1 staged at Whitsett Base Camp. Castle Ambulance 2 stage at R Ranch Spike. Castle REMS available to all DIVS.
- Prioritization of all control or containment actions taken during the operational period in this Division will be at the discretion of the DIVS. Actions may have to be taken by the DIVS that are not enumerated in today's IAP. These actions would be a result of a significant change in actual or expected fire behavior over and above that anticipated at the time the IAP was prepared. These actions will be coordinated with and approved by the OSC whenever possible.

#### Division/Group Communication Summary

Function	Channel	Frequency RX	Frequency TX	TONE RX	TONE TX	Function	Channel	Frequency RX	Frequency TX
COMMAND	2	170.6875	166.5750	151.4	151.4	A/G TAC	Must self program	169.2000	169.2000
COMMAND	3	172.5500	162.1875	151.4	151.4	A/G CMD	14	169.1500	169.1500
NIFC T7	9	168.2500	168.2500	151.4	151.4	A/G CMD			
Prepared by Anya Moline - RESL		Approved By Robin Jermyn - PSC				Date 9/8/2020		Time 1800	

DIVISION ASSIGNMENT LIST		Branch	Division/Group
Incident Name		STRUCTURE	LLOYD
SEQUIOA COMPLEX		Operational Period	
		Date: 9/9/2020 to 9/10/2020	Time: 0600-0600
Operations Personnel			
Operations Chief	Brent Olson, Scott Schrenk Andy James (t) Shawn Borgen (t)	Branch Director	Drew Daily 405-431-9476
Air Operations	Dennis Morton Dan Sepulveda	Division/Group Supervisor	Bryan Duffy 559-731-8676
Safety Officer	Tony Petrilli, Todd Mott (t) Dan Cassidy		

#### Resources Assigned This Period

Strike Team/Task Force/ Resource Designator	Req#	Last Shift	Leader	# Persons	Drop Off Point /Time	Pick Up Point / Time
S/T 5809C ENG3	E-241	9/18	Jason Elizondo	16	Whitsett Base 0600	Whitsett Base 2100

#### Work Assignments

**Task:** Provide structure defense for the Lloyd Meadows, Pyle's Camp, Peppermint Ranch Communities, T-T Ranch, Camp Whitsett and Forest Service Campgrounds. Provide mitigation and reasonable protection for nationally significant natural resources within the Freeman Grove. Assist Ponderosa Structure Group and/or Nelson Structure Group as directed by Structure Branch Director.

**Purpose:** Protect values at risk from spreading fire.

**End State:** Values at risk and communities are able to operate in pre-fire condition accounting for public safety.

#### Special Instructions

- Personnel to notify DIVS of potentially sensitive cultural materials.
- Castle Ambulance 1 staged at Whitsett Base Camp. Castle Ambulance 2 stage at R Ranch Spike. Castle REMS available to all DIVS.
- Prioritization of all control or containment actions taken during the operational period in this Division will be at the discretion of the DIVS. Actions may have to be taken by the DIVS that are not enumerated in today's IAP. These actions would be a result of a significant change in actual or expected fire behavior over and above that anticipated at the time the IAP was prepared. These actions will be coordinated with and approved by the OSC whenever possible.

#### Division/Group Communication Summary

Function	Channel	Frequency RX	Frequency TX	TONE RX	TONE TX	Function	Channel	Frequency RX	Frequency TX	
COMMAND	1	170.0000	166.6750	151.4	151.4	A/G TAC	13	172.3500	172.3500	
R5 T6	11	168.2375	168.2375	151.4	151.4	A/G CMD	14	169.1500	169.1500	
Prepared by Anya Moline – RESL		Approved By Robin Jermyn - PSC				Date 9/8/2020			Time 1800	



DIVISION ASSIGNMENT LIST				Branch		Division/Group				
Incident Name				STRUCTURE			NELSON			
SEQUIOA COMPLEX				Operational Period						
				Date: 9/9/2020 to 9/10/2020			Time: 0600-0600			
Operations Personnel										
Operations Chief		Brent Olson, Scott Schrenk Andy James (t) Shawn Borgen (t)			Branch Director			Drew Daily 405-431-9476		
Air Operations		Dennis Morton Dan Sepulveda			Division/Group Supervisor			Hunter Seaborn Bell, III 406-670-5633		
Safety Officer		Tony Petrilli, Todd Mott (t) Dan Cassidy								
Resources Assigned This Period										
Strike Team/Task Force/ Resource Designator		Req#	Last Shift	Leader	# Persons	Drop Off Point /Time		Pick Up Point / Time		
HC1 Patrick 2	C-91	9/19	Austin Hergert	20	Whitsett Base 0600		Whitsett Base 2100			
TFLD	E-246	9/20	Bill Castonquay	1	Whitsett Base 0600		Whitsett Base 2100			
TFLD (t)	O-780	9/20	Bryan Shropshire	1	Whitsett Base 0600		Whitsett Base 2100			
S/T 2806A	E-280	9/18	Kevin Gotro	21	Whitsett Base 0600		Whitsett Base 2100			
S/T 5810A	E-281	9/18	Sal Gutierrez	22	Whitsett Base 0600		Whitsett Base 2100			
ENG3 CO River	E-245	9/20	Randy Hill (t)	4	Whitsett Base 0600		Whitsett Base 2100			
ENG3 Greater Eagle	E-246	9/20	Wade Michels	5	Whitsett Base 0600		Whitsett Base 2100			
ENG3 Yosemite 31	E-248	9/20	Roy Freitas	5	Whitsett Base 0600		Whitsett Base 2100			
ENG3 J3 Contract	E-252	9/18	Jacob Vavricka	3	Whitsett Base 0600		Whitsett Base 2100			
ENG3 J3 Contract	E-253	9/19	Wesley Wallace	3	Whitsett Base 0600		Whitsett Base 2100			
ENG3 Timberline	E-258	9/18	Darren Namingha	3	Whitsett Base 0600		Whitsett Base 2100			
ENG6 Carlsbad 62	E-259	9/18	Scott Maxwell	3	Whitsett Base 0600		Whitsett Base 2100			
ENG6 Sandoval Brush 22	E-260	9/18	Harris Toya	3	Whitsett Base 0600		Whitsett Base 2100			
ENG6 Farmington Brush 6	E-261	9/18	Duane Bair	2	Whitsett Base 0600		Whitsett Base 2100			
ENG6 Sac Mtn 218	E-262	9/18	Barbara Stephens	3	Whitsett Base 0600		Whitsett Base 2100			
WTT2	E-242	9/20	Terry Titus	2	Whitsett Base 0600		Whitsett Base 2100			
WTT2 Sacramento Mtn	E-243	9/20	Ed Wishard	2	Whitsett Base 0600		Whitsett Base 2100			
WTT1 Oes WT139	E-282	9/18	Keith Smith	2	Whitsett Base 0600		Whitsett Base 2100			
WTT1 Oes WT42	E-283	9/18	Robin Serna	2	Whitsett Base 0600		Whitsett Base 2100			
WTT1 WT51	E-285	9/18	Richard Murillo	2	Whitsett Base 0600		Whitsett Base 2100			
WTT2 K&B	E-236	9/18	James Davis	1	Whitsett Base 0600		Whitsett Base 2100			
WTT2 Trahan	E-237	9/18	Nicholas Trahan	1	Whitsett Base 0600		Whitsett Base 2100			
SOF2	O-394	9/12	Gary Kemp	1	Whitsett Base 0600		Whitsett Base 2100			
EMPF	O-341	9/9	John Sitar	1	Whitsett Base 0600		Whitsett Base 2100			
Work Assignments										
<b>Task:</b> Establish a structure protection plan for Cedar Slope and Camp Nelson as well as adjoining values at risk. Assist Lloyd Structure Group and/or Ponderosa Structure Group as requested by Structure Branch Director.										
<b>Purpose:</b> Protect values at risk from wildfire impacts.										
<b>End State:</b> Values at risk and communities are able to operate in pre-fire condition accounting for public safety.										
Special Instructions										
<ul style="list-style-type: none"> <li>Personnel to notify DIVS of potentially sensitive cultural materials.</li> <li>Castle Ambulance 1 staged at Whitsett Base Camp. Castle Ambulance 2 stage at R Ranch Spike. Castle REMS available to all DIVS.</li> <li>Prioritization of all control or containment actions taken during the operational period in this Division will be at the discretion of the DIVS. Actions may have to be taken by the DIVS that are not enumerated in today's IAP. These actions would be a result of a significant change in actual or expected fire behavior over and above that anticipated at the time the IAP was prepared. These actions will be coordinated with and approved by the OSC whenever possible.</li> </ul>										
Division/Group Communication Summary										
Function	Channel	Frequency RX	Frequency TX	TONE RX	TONE TX	Function	Channel	Frequency RX	Frequency TX	
COMMAND	1	170.0000	166.6750	151.4	151.4	A/G TAC	13	172.3500	172.3500	
R5 T6	11	168.2375	168.2375	151.4	151.4	A/G CMD	14	169.1500	169.1500	
Prepared by		Approved By				Date		Time		
Anya Moline – RESL		Robin Jermyn - PSC				9/8/2020		1800		

DIVISION ASSIGNMENT LIST			Branch		Division/Group	
<b>Incident Name</b>			<b>STRUCTURE</b>		<b>PONDEROSA</b>	
<b>SEQUIOA COMPLEX</b>			Operational Period			
			Date: 9/9/2020 to 9/10/2020		Time: 0600 to 0600	
<b>Operations Personnel</b>						
Operations Chief	Brent Olson, Scott Schrenk Andy James (t) Shawn Borgen (t)		Branch Director		Drew Daily 405-431-9476	
Air Operations	Dennis Morton Dan Sepulveda		Division/Group Supervisor		Brad Allen 09/10 910-995-0318	
Safety Officer	Tony Petrilli, Todd Mott (t) Dan Cassidy					
<b>Resources Assigned This Period</b>						
Strike Team/Task Force/ Resource Designator	Req#	Last Shift	Leader	# Persons	Drop Off Point /Time	Pick Up Point / Time
HC2 Dust Busters	C-80	9/17	Harper Resewehr	20	Whitsett Base 0600	Whitsett Base 2100
S/T 5181F ENG6	E-238	9/18	Kevin Riggi	16	Whitsett Base 0600	Whitsett Base 2100
SOFR (t)	O-511	9/17	Augie Berreda	1	Whitsett Base 0600	Whitsett Base 2100

**Work Assignments**  
**Task:** Implement structure defense plans for Ponderosa and adjoining communities. Support Lloyd Structure Group and/or Nelson Structure Group as requested by Structure Branch Director.  
  
**Purpose:** Protect values at risk from the impacts of wildfire.  
  
**End State:** Values at risk and communities are able to operate in pre-fire condition accounting for public safety.

**Special Instructions**

- Personnel to notify DIVS of potentially sensitive cultural materials.
- Castle Ambulance 1 staged at Whitsett Base Camp. Castle Ambulance 2 stage at R Ranch Spike. Castle REMS available to all DIVS.
- Prioritization of all control or containment actions taken during the operational period in this Division will be at the discretion of the DIVS. Actions may have to be taken by the DIVS that are not enumerated in today's IAP. These actions would be a result of a significant change in actual or expected fire behavior over and above that anticipated at the time the IAP was prepared. These actions will be coordinated with and approved by the OSC whenever possible.

Division/Group Communication Summary									
Function	Channel	Frequency RX	Frequency TX	TONE RX	TONE TX	Function	Channel	Frequency RX	Frequency TX
COMMAND	1	170.0000	166.6750	151.4	151.4	A/G TAC	13	172.3500	172.3500
COMMAND	2	170.6875	166.5750	151.4	151.4	A/G CMD	14	169.1500	169.1500
VFIRE 25	12	154.2875	154.2875	156.7	156.7				
Prepared by Anya Moline – RESL		Approved By Robin Jermyn – PSC				Date 9/8/2020		Time 1800	

DIVISION ASSIGNMENT LIST		Branch	Division/Group
Incident Name			NIGHT
SEQUIOA COMPLEX		Operational Period	
		Date: 9/9/2020 to 9/10/2020	Time: 1800-0900
Operations Personnel			
Operations Chief	Brent Olson, Scott Schrenk Andy James (t) Shawn Borgen (t)	Branch Director	
Safety Officer	Tony Petrilli, Todd Mott (t) Dan Cassidy	Division/Group Supervisor	John Lange (t) 207-233-9348

Resources Assigned This Period						
Strike Team/Task Force/ Resource Designator	Req#	Last Shift	Leader	# Persons	Drop Off Point /Time	Pick Up Point / Time
ENG3 OVD E3132	E-135	9/11	Phillip Lewis	4	Whitsett Base 0600	Whitsett Base 2100
ENG3 STF E346	E-136	9/11	Michael Scheu	4	Whitsett Base 0600	Whitsett Base 2100
ENG6 Blue Sky E8	E-63	9/11	Alex Parker	3	Whitsett Base 0600	Whitsett Base 2100
ENG6 Cahoon 1	E-64	9/11	Blane Fifield	3	Whitsett Base 0600	Whitsett Base 2100
ENG6 Cahoon 2	E-65	9/11		3	Whitsett Base 0600	Whitsett Base 2100
ENG6 E696	E-72	9/9	William McDarment	3	Whitsett Base 0600	Whitsett Base 2100
ENG6 Peanut Pie E2	E-78	9/11	Wayde Visser	3	Whitsett Base 0600	Whitsett Base 2100
WTT2 INF WT21	E-90	9/11	Cameron Ferrante	2	Whitsett Base 0600	Whitsett Base 2100
WTT2 ANF 237	E-113	9/10	Francisco Carrillo	2	Whitsett Base 0600	Whitsett Base 2100
SOFR	O-213	9/9	Paul Tadlock	1	Whitsett Base 0600	Whitsett Base 2100
EMTF	O-580	9/17	Steve Devincinzi	1	Whitsett Base 0600	Whitsett Base 2100
AMBU	E-46	9/19	Castle 1	2	Whitsett Base 0600	Whitsett Base 2100

**Work Assignments**  
**Task:** Patrol and monitor accessible fire area, support water handling operations from prior shifts, mop-up as appropriate based on firefighter safety.  
**Purpose:** Limit fire spread to additional values at risk.  
**End State:** Fire spread limited to existing fire perimeter.

- Special Instructions**
- Personnel to notify DIVS of potentially sensitive cultural materials.
  - Castle Ambulance 1 staged at Whitsett Base Camp. Castle Ambulance 2 stage at R Ranch Spike. Castle REMS available to all DIVS.
  - Prioritization of all control or containment actions taken during the operational period in this Division will be at the discretion of the DIVS. Actions may have to be taken by the DIVS that are not enumerated in today's IAP. These actions would be a result of a significant change in actual or expected fire behavior over and above that anticipated at the time the IAP was prepared. These actions will be coordinated with and approved by the OSC whenever possible.

Division/Group Communication Summary									
Function	Channel	Frequency RX	Frequency TX	TONE RX	TONE TX	Function	Channel	Frequency RX	Frequency TX
COMMAND	See 205					A/G TAC	13	172.3500	172.3500
NIFC T1	5	168.0500	168.0500	151.4	151.4	A/G CMD	14	169.1500	169.1500
Prepared by Anya Moline – RESL		Approved By Robin Jermyn - PSC				Date 9/8/2020		Time 1800	





10. TASK/ MISSION/ ASSIGNMENT (Type/ function includes: Air Tactical, Retardant, Recon, Personnel Transport, Bucket Operations, SAR, etc.)					
TYPE/FUNCTION	PRIORITY	NAME OF PERSONNEL OR CARGO (If applicable) or instructions for tactical aircraft	MISSION START	FLY FROM	FLY TO
ATGS		Provide continuous coverage over the fire as smoke and weather permits.	0900	PVT	Fire
Initial Attack		Initial Attack assistance as requested.	TBD	PVT/Peppermint	IA
Medevac		<b>**See Medical Plan in IAP – Review during Division Breakouts**</b>	TBD		Fire
Water Drops		As needed and approved by OPS, order through ATGS/HLCO	0900	PVT	Fire
Recon		Fire reconnaissance as requested.	0900	PVT	Fire
PSD		As needed and approved by OPS	0900	PVT	Fire
OTHER		(Back Haul, Re-Supply, Crew Movement) Place all orders through communications	0900	Peppermint	Fire

Helibase, Dip Sites, Pick Up Sites, etc.		Helibase, Dip Sites, Pick Up Sites, etc.	
Bridge Dip "B"	36 12.063' N, 118 27.445' W	H-12 Camp Nelson	36 08.368' N 118 36.917' W
Confluence Dip "B"	36 7.700' N, 118 26.316' W	H-20	36 10.960' N 118 29.259' W
Round Dip "B"	36 12.642' N, 118 28.000' W	H-21	36 12.650' N 118 30.230' W
Freeman "NR"	36 6.875' N, 118 27.551' W	C31	36 18.077' N 118 27.340' W
Beach Dip (X, U, N Only)	36 6.931' N, 118 17.824' W	C4	36 10.909' N 118 35.882' W
(MRB) Ranch Dip	35 58.494' N, 118 32.194' W	C11	36 0.630' N 118 23.448' W
H-1 T2	36 9.852' N, 118 26.985' W	DIV A Sling	36 10.948' N 118 29.360' W
H-2 T2	36 5.838' N, 118 26.806' W	Saddle Check	36 10.88' N 118 28.59' W
H-3 Black Rock T2	36 5.609' N, 118 15.666' W	Ridge Check	36 8.55' N 118 26.72' W
H-4 T2	36 6.128' N, 118 25.772' W	Needle Check	36 5.89' N 118 27.59' W
H-5 Piles Camp	36 08.278' N, 118 28.678' W	Lookout IP, Enter 10000'	36 3.89' N, 118 27.51' W
H-6	36 06.155' N, 118 24.808' W	Porterville HB	36 01.427' N 118 4.112' W
H-7	36 06.833' N, 118 24.373' W	Peppermint HB	36 4.355' N 118 32.500' W
H-8	36 06.762' N 118 22.767' W	C31	36 18.077' N 118 27.340' W

Visibility Limitations VFR Flight Helicopters Day 1/2 statute mile Clear of clouds

Flights above ground level	Flight Permitted in Winds Less than / Maximum Gust Spread		
	Type 1 Helicopters	Type 2 Helicopters	Type 3 Helicopters
More than 500' AGL	<50kts / Gusts: N/A	<50kts / Gusts: N/A	<50kts / Gusts: N/A
Less than 500' AGL	<40kts / Max Gust Spread: 15kts	<40kts / Max Gust Spread: 15kts	<30kts / Max Gust Spread: 15kts

The tendency ... to reinforce conviction ... to suppress self-criticism ... this is the great danger of group think".

... The Logic of Failure

INCIDENT RADIO COMMUNICATIONS PLAN			Incident Name SEQUOIA COMPLEX			Date/Time Prepared 9/08/2020			Operational Period Date/Time 9/09/20 0600 9/10/20 0600		
Ch #	Function	Channel Name/Trunked Radio System Talkgroup	Assignment	RX Freq	N or W	RX Tone/NAC	TX Freq	N or W	Tx Tone/NAC	Mode A, D or M	Remarks
1	CMD REPEATER	NIFC C4	DIV A/B/Y/Z	170.0000		151.4	166.6750		151.4	A	JORDON PEAK
2	CMD REPEATER	NIFC C11	DIV X	170.6875		151.4	166.5750		151.4	A	SHERMAN PEAK
3	CMD REPEATER	NIFC C31	DIV L	172.5500		151.4	162.1875		151.4	A	COYOTE PEAK
4	FOREST REPEATER	SQF CH2	ALL/BACKUP	169.9000			165.7000		103.5	A	SQF FOREST RPTR DISPATCH
5	TACTICAL CHNL	NIFC T1	DIV A/NIGHT	168.0500		151.4	168.0500		151.4	A	SQF TACTICAL
6	TACTICAL CHNL	NIFC T3	DIV B	168.6000		151.4	168.6000		151.4	A	SQF TACTICAL
7	TACTICAL CHNL	NIFC T5	SWING	166.7250		151.4	166.7250		151.4	A	SQF TACTICAL
8	TACTICAL CHNL	NIFC T6	DIV Y / Z	166.7750		151.4	166.7750		151.4	A	SQF TACTICAL
9	TACTICAL CHNL	NIFC T7	DIV L / X	168.2500		151.4	168.2500		151.4	A	SQF TACTICAL
10	TACTICAL CHNL	R5 T5	BLACK	167.1125		151.4	167.1125		151.4	A	SQF TACTICAL
11	TACTICAL CHNL	R5 T6	NELSON/LLOYD	168.2375		151.4	168.2375		151.4	A	STRUCTURE TAC
12	TACTICAL CHNL	VFIRE 25	POND	154.2875		156.7	154.2875		156.7	A	STRUCTURE TAC
13	AIR TO GROUND	A/G TAC	A/G TAC	172.3500			172.3500			A	A/G TAC
14	AIR TO GROUND	A/G CMD	A/G CMD	169.1500			169.1500			A	A/G CMD OVERHEAD ONLY
15	TACTICAL CHNL	CALCORD	MEDEVAC	156.0750		156.7	156.0750		156.7	A	CALCORD MEDEVAC
16	AIR GUARD	AIR GUARD	EMCY ONLY	168.6250			168.6250		110.9	A	AIR GUARD
Prepared by (Communications Unit) COMM UNIT 406.581.9816 / COM1 DUSTIN SENE 406.581.9816						Incident Location SEQUOIA NF County _____ State CA Latitude _____ N Longitude 3-7-77 W					

The convention calls for frequency lists to show four digits after the decimal place, followed by either an "N" or a "W", depending on whether the frequency is narrow or wide band. Mode refers to either "A" or "D" indicating analog or digital (e.g. Project 25) or "M" indicating mixed mode. All channels are shown as if programmed in a control station, mobile or portable radio. Repeater and base stations must be programmed with the Rx and Tx reversed.

## Sequoia Complex COVID-19 reminder

California remains an area of high prevalence of COVID-19 disease. You should remain aware of the recognized symptoms of COVID, which include:

- Fever or chills
- Cough
- Shortness of breath or difficulty breathing
- Fatigue
- Muscle or body aches
- Headache
- New loss of taste or smell
- Sore throat
- Congestion or runny nose
- Nausea or vomiting
- Diarrhea



In order for you to remain free from COVID and continue fighting fire, you will need to be especially disciplined in the common mitigation practices.

Be aware, though, that 40-50% of persons infected with COVID are completely asymptomatic when spreading the virus to you. **You cannot rely on seeing that someone is sick or discovering that they had a positive test before you engage in distancing, mask wearing and other steps to protect yourself.**

The safe mitigation practices that have been developed for health and safety remain:

- **Maintain "Module as One"**: Avoid unnecessary face-to-face or close contact with persons outside your module
- **Social Distance**: Maintain a minimum of 6 feet spacing whenever possible. Avoid sharing food, utensils or personal items.
- **Mask**: Wear your mask, especially when unable to maintain distancing, even within your module.
- **Hand Hygiene**: Continue regular hand hygiene. Wash hands for 20-30 seconds with soap and water or hand sanitizer.
- **Disinfect and Clean Common Spaces**: Clean and disinfect all areas such as door handles (interior and exterior), dashboards, steering wheel, buttons/knobs and other shared touch surfaces.
- **Regular Monitoring and Self-Assessment**: Daily self-check using the standard symptom list. Maintain awareness of any change in your health. Immediately discuss with your supervisor should you exhibit symptoms.

You should treat these mitigations as **habit** or part of **your routine**, so that you maintain your sharp focus and situational awareness on fireline and operational hazards during your duty hours.

Should a team member develop symptoms and exhibit distress, seek care immediately.



# HUMAN RESOURCE MESSAGE

*There is zero tolerance for drugs and alcohol on this fire incident.*



*Everyone you meet is fighting a battle you know nothing about.*

***Be kind! Be Nice! Always!***

\*\*\*\*\*

Debby Hassel, HRSP      (406) 274-7985

[hrspfire@gmail.com](mailto:hrspfire@gmail.com)

## REMOTE CHECK-IN

1. Scan the QR code on front of IAP to access the fillable check-in form. If you are unable to scan the code, please call Status/Check-in at **858-204-7419** for assistance.
2. Email qualification cards, manifests, contract, AD paperwork to:  
**[2020.castle.finance@firenet.gov](mailto:2020.castle.finance@firenet.gov)**

### *Are You a TRAINEE?*

1. Scan these codes to access the fillable *trainee* information forms. Send photo of qualification cards and task book cover to: [heather.e.grove@usda.gov](mailto:heather.e.grove@usda.gov) or [matthew.boss@usda.gov](mailto:matthew.boss@usda.gov)



Registration



Check-out



Exit Interview

2. Call Incident Training Specialist 530-394-8076 (Heather) or 951-314-1427 (Matt) with questions from 0600 – 2100 daily.

## DEMOBILIZATION IS NOW REMOTE!!

### Demobilization Steps:

1. ALL accountable property checked-out from the incident must be returned (i.e. communications, supply). Items may be returned at ICP.
2. Submit all finance documentation (time must be projected for travel home).
  - a. Only 1 representative per resource should go to Finance at ICP.
  - b. Abide by scheduled DMOB time or call Finance for an unscheduled DMOB.
  - c. Government agency resources that would like to close out their time 100% remotely should call **949-591-4123** when they are close to their DMOB date and make necessary arrangements to complete the process.
3. Scan the QR code on the front of the IAP to complete the DMOB process and start your travel home. If you are unable to scan the code to complete travel information, please call Demobilization Unit Leader at **951-235-1568** for assistance.

# FINANCE MESSAGE

## OPTIONS FOR SUBMITTING TIME:

1. **Fillable PDF CTR/Shift Ticket:** QR code to the fillable forms are included below. If you do not have QR capabilities finance can e-mail you the forms directly.



2. **Hard Copy CTR/Shift Ticket:** Fill out a hard copy CTR, snap a picture and email/text that into finance. If you send in a picture, please make sure it is legible and includes the supervisor's signature at the bottom! Please make sure to include your phone number in the **Remarks** in case we have questions.
3. OR you may turn in your actual hard copy as usual at Whitsett Spike Camp & Troy Meadow.
  - Please try to submit time at least every other day
  - H-Pay justifications are still required on your CTRs – “H = Hazard Pay” is not sufficient

**2020.castle.finance@firenet.gov**

Finance Main Line: 949-591-4123

Comp/Claims: 949-330-9973

TIP:

***\*\*In order to use fillable pdf forms, you must have some version of Adobe Acrobat downloaded on your device. If you have any issues opening the documents call finance for assistance. \*\****



# FINANCE

## S# PROCESS

### FEDERAL RESOURCES ONLY

- **PROPERTY LOSS-REPAIR-REPLACE OF NON-NATIONAL FIRE EQUIPMENT SYSTEM (NFES) OR NON-STANDARD CACHE ITEMS**

➤ **CAN IT BE REPLACED AT SUPPLY?**

1. **General message is needed (ICS 213) with contact information NAME/PHONE #/EMAIL/RESOURCE ORDER # send to Supply at [2020.castle.ordering@firenet.gov](mailto:2020.castle.ordering@firenet.gov)**

➤ **IF YOU NEED AN S# FOR REPLACEMENT BECAUSE SUPPLY DOES NOT HAVE IT PLEASE DO THE FOLLOWING**

2. **General message is needed (ICS 213) with contact information NAME/PHONE #/EMAIL/RESOURCE ORDER # a description of property damage or loss and pictures is required send to finance at [2020.castle.finance@firenet.gov](mailto:2020.castle.finance@firenet.gov)**

3. **We have Comp/Claims on site! Please reach out to us with any questions at 949-330-9973**



## RESOURCE MESSAGE

The Sequoia Complex, burning in the Western Divide Ranger District, is advancing toward the Freeman Creek Grove, which sits between the fire and the community of Ponderosa, and is the home of the Bush Tree.

**Use of bulldozers to construct fire lines when building hand lines is no longer effective within the giant sequoia groves in the path of the Sequoia Complex is approved. This approval includes the zones of influences for the groves as well.**

**The use of bulldozers in groves MUST have the approval of the Incident Commander and the Agency Administrator.**

**I expect the following management requirements to be adhered to:**

- A Resource Advisor will be on site during all fire line construction when heavy equipment is used and notified immediately when it is determined that felling any giant sequoia tree is necessary.
- The Giant Sequoia National Monument Plan (Monument Plan) limits cutting sequoias larger than 12" dbh except in clear cases of threats to human safety.
- Keep the dozer line at least 10 feet from the drip line of giant sequoia trees greater than 12" dbh in order to avoid damaging the root systems.
- There may come a point where avoiding the drip line may make the fire line ineffective. If possible build hand lines in these situations.
- Where there are areas of very dense giant sequoia trees that are impossible to avoid, whether building line by hand or dozer, giant sequoias may be felled with the approval of the Resource Advisor.
- Tree felling criteria (Monument Plan, pp. 81-82) have been evaluated. The following criterion is applicable for this project.
  - F4. Public Safety: If maintaining one or more standing trees on site would create a public safety hazard. Forest Service policy is to eliminate safety hazards from recreation sites, administrative sites, and the public transportation system of roads and trails, including trees or tree limbs identified as hazardous (FSM 2330.6a).
  - The trees to be felled have been identified as hazards because leaving them standing would create a safety hazard for firefighters; both as potential falling hazards and by reducing the effectiveness of constructed fire lines. No giant sequoias over 12" dbh would be cut without prior approval.

## Don't Forget....

### Reporting of Cultural Sites

- Do not use the radio. Looters listen to our frequencies and will note where you find things.
- Grab a GPS point, bump it up the chain of command or directly inform a READ.

### Food on the Line Attract Wildlife Over Time.

- Keep food off the line as much as possible. It lures in wildlife, especially on indirect and contingency lines. Food associate's wildlife to humans and can cause future issues (i.e. bears looking for food in camps).

### Sensitive Areas

- READs will be flagging sensitive areas during the incident.
- By default, please avoid going into these areas.
- The two flagging colors used are a strip of blue and a strip of red.
- For more information, please consult with a READ.

### Keep Up the Good Work!

Continue to do good work for cultural and natural resources by doing the following:

- Picking up trash/micro-trash.
- Removing unused flagging.
- Sharing information and working alongside READs.
- When moving on to a new area, leaving the old area better than you found it.



# Northern Rockies Team 1

## SEQUOIA COMPLEX

### PHONE LIST

POSITION	NAME	MOBILE PHONE
<b>SAFETY</b>		
Safety Officer 1		
<b>PUBLIC INFORMATION</b>		
Public Information Officer 1	Smith, Jeannette M	406-544-0131
<b>LIAISON</b>		
Liaison Officer	Taylor, Robert L	406-554-4679
<b>OPERATIONS</b>		
Operations Section Chief 1	Olson, Brent H	406-249-4994
Line Ops	Schrenk, Scott	406-250-0354
Air Ops	Morton, Dennis	406-660-2318
<b>PLANNING</b>		
Planning Section Chief	Jermyn, Robin	406-360-5936
Planning Section Chief (t)	Carlin, Rob	406-249-1989
Deputy Planning Chief	Gump, Robert	850-688-7623
Status Check In	Heinsch, Faith Ann	858-204-7419
DEMOB	Murphy, Tanya	951-235-1568
Training Specialist	Boss, Matt	951-314-1427
Sequoia NF READ	Courter, Josh	559-920-7023
Inyo NF READ	Barnett, Adam	760-920-8104
<b>LOGISTICS</b>		
Logistics Section Chief 1	Showers, Charles	406-531-3691
Ordering Manager	Lind, Rita	406-291-3012
Supply Unit Leader	King, Josh	406-855-0984
Communications Unit Leader	Sene, Dustin	406-581-9816
COVID-19 Medical	Gaul, Roylene	406-381-6888
<b>FINANCE</b>		
Finance Section Chief 1	Schrenk, Amy	406-830-5214
General Finance Information		949-591-4123
COMP/CLAIMS		949-330-9973

**09/09/2020**

**TENTATIVE RELEASE**

**CASTLE US-CA-SQF-002541**

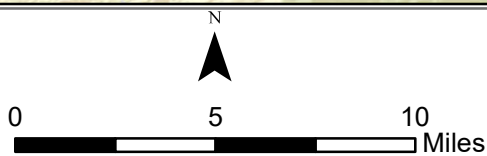
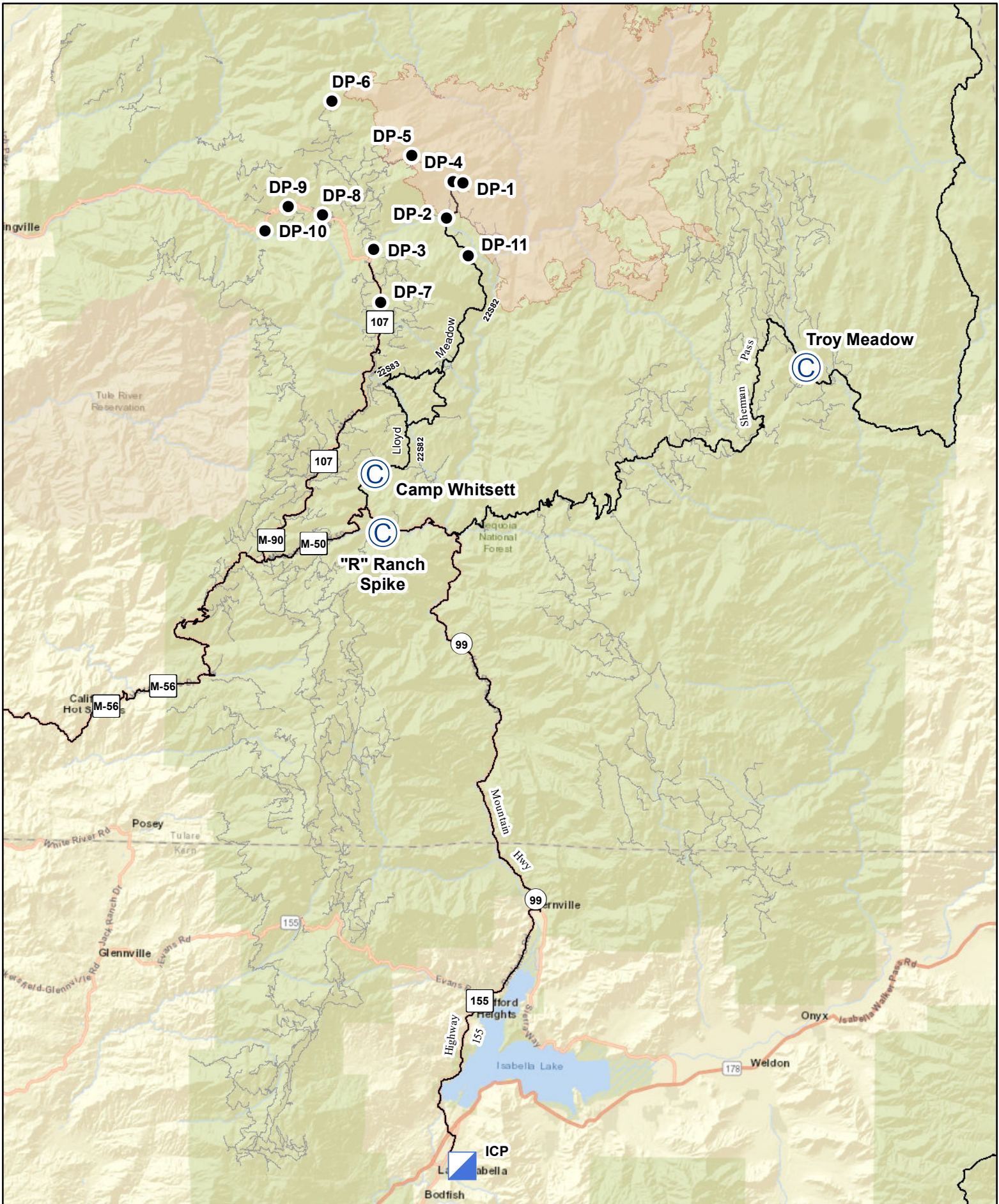
**EQUIPMENT**

<b>E-83</b>	<b>0845</b>	<b>(DOZ2)</b>	<b>DOZER - T2 CONNOR</b>
<b>E-88</b>	<b>0900</b>	<b>(WTS2)</b>	<b>TENDER, WATER (SUPPORT) - T2</b>

**OVERHEAD**

<b>O-508</b>	<b>0600</b>	<b>(HRSP)</b>	<b>CABIDA, ANDREA LEAH</b>
<b>O-171</b>	<b>0800</b>	<b>(SOFR)</b>	<b>KLEMOWICZ, ERIC</b>
<b>O-326</b>	<b>0815</b>	<b>(PIOF)</b>	<b>EMBREY, ALICIA MAY</b>
<b>O-212</b>	<b>0830</b>	<b>(DRIV)</b>	<b>MAGANA, IVAN CEBALLOS</b>
<b>O-213</b>	<b>1700</b>	<b>(SOFR)</b>	<b>TADLOCK, PAUL FRANKLIN</b>





**Transportation**  
**Sequoia Complex**  
 CA-SQF-002622





