

*** CORRECTED ***

INCIDENT ACTION PLAN

SQF COMPLEX

CA-SQF-002622

P5NG2P (0513)



Scan for:

IAP's

Maps

Check In

DMOB

Finance

OPERATIONAL PERIOD

8/28/2020 0600

to

8/29/2020 0600

Friday

INCIDENT OBJECTIVES (ICS 202)

1. Incident Name: SQF COMPLEX	2. Operational Period:	Date From: 8/28/2020	Date To: 8/29/2020	
		Time From: 0600	Time To: 0600	

3. Objective(s):

Management Objectives

- Provide for firefighter and public safety as the highest priority through sound risk management and life first principles
- Minimize adverse effects from suppression actions on riparian areas, watersheds, Little Kern Golden Trout, Mountain Yellow Legged Frog and Sierra Nevada Bighorn Sheep habitats
- Minimize impacts to Wilderness areas. Use minimum impact suppression tactics (MIST) by utilizing trails, streams, ridges and natural barriers when possible for control lines
- Minimize, to the extent feasible, smoke exposure to firefighters, communities, and other affected areas to reduce susceptibility to the consequences from COVID-19 exposure
- Effectively manage cost of the incident by planning strategies and tactics toward a high probability of success in meeting incident objectives
- Provide accurate and timely information to agencies, stakeholders, backcountry users, and the public

Control Objectives

- Keep the fire North of Durr Wood Camp
- Keep the fire South of Sequoia Kings Canyon Wilderness Boundary
- Keep the fire East of 22S82 Road to Freeman Grove to Soda Spring Creek
- Keep the fire West of Toowa Range to King Fisher Ridge to 22S05 Road

COVID Mitigations

- Module of 1, six foot social distancing and wear a mask
- Wash your hands and sanitize surfaces

5. Site Safety Plan Required? Yes No

Approved Site Safety Plan(s) Located at:

6. Incident Action Plan


<input checked="" type="checkbox"/> ICS 203	<input checked="" type="checkbox"/> ICS 215A	<input type="checkbox"/> ICS 205 A	<input type="checkbox"/>
<input checked="" type="checkbox"/> ICS 204	<input checked="" type="checkbox"/> ICS 220	<input type="checkbox"/> Training Message	<input type="checkbox"/>
<input checked="" type="checkbox"/> ICS 205	<input type="checkbox"/> Facility Maps	<input checked="" type="checkbox"/> Travel Map	<input checked="" type="checkbox"/> HR MESSAGE
<input checked="" type="checkbox"/> ICS 206	<input checked="" type="checkbox"/> Weather Forecast	<input type="checkbox"/> Demob Plan	<input checked="" type="checkbox"/> COVID BRIEFING CHECKLIST
<input checked="" type="checkbox"/> ICS 208	<input checked="" type="checkbox"/> Fire Behavior	<input type="checkbox"/> Finance Message	<input checked="" type="checkbox"/> ICS 214

7. Prepared By: Steve Anderson, Greg White (T) Position/Title: PSC Signature:

8. Approved by Incident Commander: Mike Nobles, Alan Taylor (T) Signature:

ICS 202

ORGANIZATION ASSIGNMENT LIST (ICS 203)

1. Incident Name: SQF COMPLEX		2. Operational Period: Date From: 8/28/2020 Time From: 0600		Date To: 8/29/2020 Time To: 0600	
3. Incident Commander(s) and Command Staff:			7. Operation Section:		
IC/UC's	Mike Nobles, Alan Taylor (T)	Operations	Jim Snow, John Owings (T)		
Deputy	Robert Laeng	Deputy Operations	Matt Conklin		
Safety Officer	Paul Tompkins, John Nickey	Night Ops	Mark Brown		
Information Officer	Seneca Smith, Alex Olow (T)	Planning Ops	Don Smith		
Liaison Officer	Larry LaVogue	Branch			
Human Resources	Todd Morrow	Division/Group	A	Ken VanWig, Chris Ware (T)	
COVID IC Rep	Alan Taylor (T)	Division/Group	B	Logan Sanders	
4. Agency/Organization Representatives:		Division/Group	C	TBD	
AA SQF	Teresa Benson	Division/Group	G	TBD	
AA SQF	Al Watson	Division/Group	X	Jason Flores	
AA INF	Phillip Desenze	Division/Group	Y	Robb Noxon	
AA INF	John (Pancho) Smith	Division/Group	Z	Chris St Pierre	
AA SEKI	Lee Taylor	Division/Group	PONDEROSA STRUCTURE	Brad Allen	
Chief 1 SQF	Angie Sanchez-Hand	Division/Group	INYO CONTINGENCY	Lee Roesser, Packer	
Sequoia & Kings NPS	John Ziegler	Division/Group	CONTINGENCY	John Goss	
Tulare Co FD	Pete Marquez	Division/Group	SHOTGUN	TBD	
Tulare Co Sheriff	Bobby Rader	Division/Group	NIGHT	Mark Brown	
SoCal Edison	Troy Whitman	Division/Group			
CHP	Chad Patterson	Division/Group			
Tribal Liaison	Dirk Charley	Division/Group			
Tule River Tribe	Zane Santos	Division/Group			
		Division/Group			
5. Planning Section:		Branch			
Chief	Steve Anderson, Greg White (T)	Division/Group			
Deputy	Ken Bates	Division/Group			
Resource Unit	Josh Clark, Kris McDonald (T), Michael Yeun (T)	Division/Group			
Situation Unit	John Hamer	Division/Group			
Documentation Unit	Jenny Rechel	Division/Group			
Demobilization Unit	Bill Kershaw	COVID - 19 Group			
GISS	Rich Murillo, Sarah Solnit, Jen House	COVID Advisor	Steve Hall		
FBAN	Dan O'Connor(V), Lauren Blake (T)	Logistics Rep	David Alicea		
LTAN	Tim Sexton	Medical Rep	Brandon Bennewate (T)		
IMET	Andy Gorelow	Human Resources Rep	Todd Morrow		
Status Check-In	Lisa Gammell, Jason Elledge	Safety Rep	John Nickey		
READ	Josh Courter, Adam Barnett	Air Operations Branch		Director:	Joann Overacker
Air Resource Advisor	Paul Schlobohm	Air Support Group Supervisor		Daniel Sepulveda	
		Air Tactical Group Supervisor			
6. Logistics Section		Porterville Helibase Manager		Jesse Rodriguez	
Chief	David Alicea, Scott Ashbach	Peppermint Helibase Manager		Matt Quezada	
Supply Unit	Jason Kramer (T)	8. Finance/Administration Section:			
Facilities Unit	Art Curley	Chief	Lisa Wilson		
Ground Support Unit	Mark Bagley	Personnel Time	Cara Scott, Rebecca Lang		
Communications Unit	Christopher Perry	Equipment Time	Alejandra Godoy		
Medical Unit	Matt Menard, Brandon Bennewate (T)	Comp/Claims Unit			
IT Services Unit	Brett Davidson, Dale Ho	Cost Unit			
Base Camp Manager	Dave Seneviratne (T)				
Prepared By: Name: Steve Anderson, Greg White (T)		PSC	Signature: 		
ICS 203		Date/Time:	8/27/2020 2300 hours		



FIRE WEATHER FORECAST



FORECAST NO: 4
PREDICTION FOR: Aug 28th – Aug 29th 0600

INCIDENT NAME: SQF Complex
UNIT: CA-SQF
SIGNED: Andrew Gorelow

TIME AND DATE
FORECAST ISSUED: Thu, Aug 27 @ 1900 hours Incident Meteorologist – Andrew Gorelow

WEATHER DISCUSSION: Dry conditions will remain over the next several days with only minimal changes in temp and RH. Northerly drainage winds in the morning are expected 2-4 mph and are likely to follow the Little Kern and Kern Rivers. There is potential for those winds to be more northeasterly at the confluence of both rivers with speeds up to 5 mph through 1000. Winds will begin to switch back to the south to southwest between 1100 and 1200 with daytime heating. Wind speeds around 3 to 6 mph in the lower valleys with occasional gusts to 10 mph in the afternoon. Ridgetop winds will generally increase to 7 to 9 mph with gusts up to 12 mph. Transport winds are expected to push the winds northeast through the afternoon.

SKY/WEATHER TODAY (FRIDAY): Smoky in the morning with some clearing by early afternoon. Sunny with just a few clouds over the higher peaks. Light drainage winds in the morning, becoming south to southwest in the afternoon. Winds will shift to more to a westerly direction after 1600.

MAX TEMPERATURES / MIN RELATIVE HUMIDITY:

5000 FT: 88 to 94 degrees (Little Change) / 14 to 19% (Down 2-3%)
7000 FT: 78 to 83 degrees (Little Change) / 16 to 21% (Down 2-3%)

EYE LEVEL WINDS:

Slope/Valley: North to northeast drainage winds up to 4 mph in the morning through 1000 with winds following the Little Kern and Kern Rivers. Winds will gradually shift to the south to southwest after 1200 with speeds 4 to 7 mph gusting to 12 mph. Those south to southwest winds will generally align with the local terrain.

Ridges: Southwest 4 to 7 mph occasional gusts to 10 mph in the afternoon, winds expected to shift more westerly after 1600.

MIXING HEIGHT...10,500 feet AGL **VENTILATION...**Poor morning, Excellent in the afternoon.
TRANSPORT WIND...East around 5 mph in the morning, southwest 10 to 15 mph in the afternoon.
CWR (0.10")...0% **LAL....**1 **HAINES....**5 (2-Stability/3-Dryness)

SKY/WEATHER TONIGHT (FRIDAY NIGHT): Clear. Winds becoming light drainage after 2000, especially following the Kern and Little Kern Rivers. Valleys to become very smoky by morning. Overnight RH expected to be good.

MIN TEMPERATURES / MAX RELATIVE HUMIDITY

5000 FT: 57 to 62 degrees (Little Change) / 55 to 60% (Up 2-4%)
7000 FT: 55 to 60 degrees (Little Change) / 36 to 41% (Up 2-4%)

20 FOOT WINDS:

Slope/Valley: Light drainage winds developing after 2000, especially following the Little Kern and Kern Rivers.

Ridges: Northwest 1 to 3 mph.

CWR (0.10")...0% **LAL....**1

SATURDAY: Morning smoke then becoming mostly sunny in the afternoon. Slight increase in temperatures and decrease in RH. Little change in wind patterns.

Max Temps: 78 to 93. **Min RH:** 18 to 30%. **Winds:** Morning drainage winds becoming generally upslope/upvalley on in the lower elevations with a southwest wind 5 to 10 mph on the ridges in the afternoon.

LAL: 1 CWR (0.10"): 0% MIXING HEIGHT: 11,500 feet AGL HAINES: 5 (2-Stability/3-Dryness)

OUTLOOK for SUNDAY and MONDAY:

Weather: Smoky morning with mostly sunny afternoon. Minimal changes in temperature and RH. **High Temp:** 78-91
Min RH: 18-25% **CWR:** 0% **LAL:** 1 **Wind:** Southwest 4 to 7 mph in the afternoon.

FIRE BEHAVIOR FORECAST

FORECAST NUMBER: 7	TYPE OF FIRE: Wildland
FIRE NAME: SQF Complex	OPERATIONAL PERIOD: Aug 28, Day/Night 24 Hr
DATE ISSUED: August 27, 2020	TIME ISSUED: 1800
UNIT: CA-Sequoia National Forest	SIGNED: /s/ Dan O'Connor FBAN/ Lauren Blake FBAN(t)

WEATHER SUMMARY

Dry weather can be expected over the district for the next several days. Little diurnal change in temperatures will occur into next week with slightly lower humidities and generally light, terrain driven winds. There is a possibility of a warming trend by the middle of next week.

FIRE BEHAVIOR

GENERAL

Fuels The Fire is burning in an area of the SQF backcountry that doesn't have a lot of recent fire history. To the East and South of the fire is the 2002 McNally and 2017 Schaeffer burn scars, to the West the Pier (2017), the Lion (2017) to the north, and directly adjacent is the smaller George Fire (2012). The Pier, Lion, and Schaeffer should offer solid opportunities to slow fire spread.

Topography Complex terrain features of the Golden Trout Wilderness will highly influence fire spread direction and speed. Higher terrain will be exposed to SW flow, while the drainages will see more Southerly up drainage afternoon winds and Northerly down drainage winds at night.

Weather: Smoky in the morning with some clearing by early afternoon. Sunny with just a few clouds over the higher peaks. Inversions expected to lift by late morning. Light drainage winds in the afternoon becoming south to southwest in the afternoon. Winds will shift to more to a westerly direction after 1600.

	Max Rate of Spread	Max Flame Lengths	Spotting Distances	POI
Head	80 ch/hr.	8-12'	<400'	80%
Flanking	24-30 ch/hr.	6-8'	<100	80%
Backing	2-4 ch/hr.	1-3'	0	80%

SPECIFIC

Div. A/B Fire will continue backing/ flanking into the afternoon winds. The NW progression from Trout Meadows to Round Meadow is at about 2000' per day, backing/flanking West towards Jerkey Meadow at about 1000' per day. The 2017 Lion Fire still seems to be slowing fire spread.

Div. C Fire progression has slowed in the 2017 Lion Fire scar.

Div. G Fire continues to move to the NE towards Kern Peak and Overlook Peak. On the eastern flank the fire is slowly backing towards the Kern. Where the fire crosses the Kern River on the east, expect slope reversal runs where wind and terrain align.

Div. X Down canyon winds after 2100 to move the fire towards the Forks of the Kern confluence. 2017 Schaeffer fire is slowing spread rates but the southwest side has more fuel to make small terrain driven runs.

Div. Y/Z Periods of morning SE flow offer opportunities for slope/wind/aspect aligned runs towards values at risk west of the fire.

Shotgun Fire: Fire has a large rock component to the north and east. To the southwest is the 2011 Lion Fire and the Southeast is the 2017 Lion Fire. While heat is still detected there has been no significant fire growth.

AIR OPERATIONS

Smoke should lift between 1000-1100 to support air missions.

SAFETY

Maintain situational awareness of the complex terrain features that will influence fire spread direction. This may be different than general afternoon wind flow from the SW.



Health & Safety Message

Incident: SQF Complex CA-SQF-002622	Date/Op Period: Day/Night Shift 0600-0600 08/28-29/ 2020
---	--

RISKS & HAZARDS

Lookouts: Posting Lookouts is an invaluable tool for gathering information on fire behavior & weather and it's potential impacts to crews working on the fireline. Lookouts should be experienced, competent & trusted. They should have knowledge of crew locations, escape routes, safety zones, trigger points and possess a map, weather kit, watch & IAP.

Good communications with crews is essential!

Safety Zones: A safety zone is an area where a firefighter can survive without a fire shelter. The separation distance between firefighter and flames should be at least **4X the maximum flame height. This is based on flat terrain and no wind conditions. Safety Zones that are downwind and/or upslope from the fire will require larger separation distances.** Reference your IRPG for detailed safety zone size calculations.

Standard Fire Order #4: Identify escape routes and safety zones and make them known.

Annotate safety zones on your maps and get them printed on the Ops maps.

Human Factors to S.A.: Personalities, fatigue, stress factors are a few reasons that interfere with humans' abilities to gather and react to situational awareness. Key Barriers include:

- Low experience level with local factors
- Distraction from primary task
- Fatigue
- Stress reactions
- Hazardous attitudes

Conduct a self-assessment of yourself. Are any of these barriers affecting you and your ability to do your job or decision-making? Refer to your IRPG and make a conscious effort to mitigate some of these factors.

Prepared By: Paul Tompkins SOFR2 John Nickey SOFR2	Reviewed By: DPIC/IC
--	-----------------------------

L. Lookouts C. Communications E. Escape Routes S. Safety Zones
BE MINDFUL

ASSIGNMENT LIST (ICS 204 WF)

CONTROLLED UNCLASSIFIED
INFORMATION//BASIC

1. Incident Name: SQF COMPLEX	2. Operational Period: Date From: 08/28/20 Date To: 08/29/20 Time From: 0600 Time To: 0600	3. Branch Division A Page 1 of 1 Alpha
--	---	--

4. Operations Personnel:	
Operations Section Chief: Jim Snow, John Owings (T) Branch Director:	Night Ops: Mark Brown Branch Safety:
Division/Group Supervisor: Ken VanWig, Chris Ware (T)	Air Attack:

5. Resources Assigned:		** Resources in BOLD are 24-hour **					
Resource Identifier	ALS	LWD	Leader	Personnel	Request #	Hours	Reporting Location
WFM WHISKEY FLATS		8/29	TRAVIS CLENDENEN	9	O-101	0600-1800	Whitsett Spike
HC2 SCORPIONS - 3		9/8	DILEEP BOBBA	22	C-13	0600-1800	Whitsett Spike
WT2 PVT K&B		9/7	MIKE MORGAN	1	E-48	0600-1800	Whitsett Spike
DOZ2 PVT SHANNON BROS 44		9/7	BILL SHANNON	1	E-44	0600-1800	Whitsett Spike
DOZ2 PVT SHANNON BROS 45		9/7	JOHN SHANNON	1	E-45	0600-1800	Whitsett Spike
FALM TIMBERSMITH SMITH		9/9	KEENAN SMITH	2	O-176	0600-1800	Whitsett Spike
FALM TIMBERSMITH DENIZ		9/9	RYAN DENIZ	2	O-177	0600-1800	Whitsett Spike
HEQB CROW		8/29	KYLE CROW	1	O-117	0600-1800	Whitsett Spike
SOFR MARTIN		8/30	MATTHEW MARTIN	1	O-103	0600-1800	Whitsett Spike
SOFR KLEWOWICZ		9/9	ERIC KLEWOWICZ	1	O-171	0600-1800	Whitsett Spike
FEMP DAUNIS		9/4	SHANE DAUNIS	1	O-198	0600-1800	Whitsett Spike
FEMT BUSBY		9/4	KYLE BUSBY	1	O-210	0600-1800	Whitsett Spike
REAF WINGATE		9/6	ERNEST WINGATE	1	O-50	0600-1800	Whitsett Spike

6. Work Assignments:
 TASK: Construct dozer & hand line between Summit trailhead & Jerky Meadow utilizing existing road & trail system onto the 20S64 road system. Crews be prepared to spike.
 PURPOSE: Keep the fire spread East of Lloyd Meadow Rd and South of Angora Peak
 END STATE: Limit fire spread into additional values at risk to protect communities and infrastructure

7. Special Instructions:
 Use caution when driving on roadways and on the fire line. Be aware of wildlife in the fire area and use caution when encountered.
 Coordinate with Power Company for utility concerns. Backhaul excess equipment and trash.
 Monitor command, air to ground, and respective tactical frequencies. Identify potential Drop Point locations.
 Follow all COVID protocols and precautions, stay safe cover your face and maintain your space.
 Castle Ambulance 1 available from Whitsett Spike Camp. Castle Ambulance 2 available from R Ranch Spike Camp.

8. Communications							
Name	Ch	Function	Rx Freq	Rx Tone	Tx Freq	Tx Tone	Notes
SQF CH2	4	DISPATCH	169.9000N		165.7000N	T8 - 103.5	SEQUOIA CH.2
NIFC T1	5	TACTICAL	168.0500N	T14 - 151.4	168.0500N	T14 - 151.4	
AIR-GROUND TAC	13	A/G TAC	172.3500N		172.3500N		
CALCORD	15	MEDICAL	156.0750N	T6 - 156.7	156.0750N	T6 - 156.7	MEDICAL EVAC
AIRGUARD	16	EMERGENCY	168.6250N		168.6250N	T1 - 110.9	EMERGENCY ONLY

9. Prepared by: Name:	Josh Clark, Kris McDonald (T), Michael Yeun (T)	RESL	Signature:
ICS 204	Date/Time: 8/27/2020 2200	Personnel Count: 44	

ASSIGNMENT LIST (ICS 204 WF)

CONTROLLED UNCLASSIFIED INFORMATION//BASIC

1. Incident Name: SQF COMPLEX	2. Operational Period: Date From: 08/28/20 Date To: 08/29/20 Time From: 0600 Time To: 0600	3. Branch Division C
---	---	--

4. Operations Personnel: Operations Section Chief: Jim Snow, John Owings (T) Branch Director: Division/Group Supervisor: TBD	Night Ops: Mark Brown Branch Safety: Air Attack:
--	---

5. Resources Assigned:		** Resources in BOLD are 24-hour **					
Resource Identifier	ALS	LWD	Leader	Personnel	Request #	Hours	Reporting Location
TBD							TBD

6. Work Assignments:
TBD

- 7. Special Instructions:**
- Use caution when driving on roadways and on the fire line. Be aware of wildlife in the fire area and use caution when encountered.
 - Coordinate with Power Company for utility concerns. Backhaul excess equipment and trash.
 - Monitor command, air to ground, and respective tactical frequencies. Identify potential Drop Point locations.
 - Follow all COVID protocols and precautions, stay safe cover your face and maintain your space.
 - Castle Ambulance 1 available from Whitsett Spike Camp. Castle Ambulance 2 available from R Ranch Spike Camp.

8. Communications							
Name	Ch	Function	Rx Freq	Rx Tone	Tx Freq	Tx Tone	Notes
SQF CH2	4	DISPATCH	169.9000N		165.7000N	T8 - 103.5	SEQUOIA CH.2
NIFC T3	6	TACTICAL	168.6000N	T14 - 151.4	168.6000N	T14 - 151.4	
AIR-GROUND TAC	13	A/G TAC	172.3500N		172.3500N		
CALCORD	15	MEDICAL	156.0750N	T6 - 156.7	156.0750N	T6 - 156.7	MEDICAL EVAC
AIRGUARD	16	EMERGENCY	168.6250N		168.6250N	T1 - 110.9	EMERGENCY ONLY

9. Prepared by: Name: Josh Clark, Kris McDonald (T), Michael Yeun (T) RESL Signature: _____

ICS 204 Date/Time: 8/27/2020 2200 Personnel Count: 0

ASSIGNMENT LIST (ICS 204 WF)

CONTROLLED UNCLASSIFIED INFORMATION//BASIC

1. Incident Name: SQF COMPLEX	2. Operational Period: Date From: 08/28/20 Date To: 08/29/20 Time From: 0600 Time To: 0600	3. Branch Division X
--	---	---

4. Operations Personnel: Operations Section Chief: Jim Snow, John Owings (T) Branch Director: Division/Group Supervisor: Jason Flores	Night Ops: Mark Brown Branch Safety: Air Attack:
---	---

5. Resources Assigned:		** Resources in BOLD are 24-hour **						
Resource Identifier	ALS	LWD	Leader	Personnel	Request #	Hours	Reporting Location	
WFM MAMMOTH		9/6	JEFFREY KARL	10	O-49	0600-1800	Whitsett Spike	

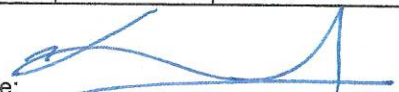
6. Work Assignments:
TASK: Develop & implement strategy to contain fire spread East of the Kern River.
PURPOSE: Limit fire spread into areas East of the main fire on the East side of the Kern River.
END STATE: Fire spread East of the Kern River contained.

7. Special Instructions:
Use caution when driving on roadways and on the fire line. Be aware of wildlife in the fire area and use caution when encountered.
Coordinate with Power Company for utility concerns. Backhaul excess equipment and trash.
Monitor command, air to ground, and respective tactical frequencies. Identify potential Drop Point locations.
Follow all COVID protocols and precautions, stay safe cover your face and maintain your space.
Castle Ambulance 1 available from Whitsett Spike Camp. Castle Ambulance 2 available from R Ranch Spike Camp.

8. Communications

Name	Ch	Function	Rx Freq	Rx Tone	Tx Freq	Tx Tone	Notes
SQF CH2	4	DISPATCH	169.9000N		165.7000N	T8 - 103.5	SEQUOIA CH.2
NIFC T5	7	TACTICAL	166.7250N	T14 - 151.4	166.7250N	T14 - 151.4	
AIR-GROUND TAC	13	A/G TAC	172.3500N		172.3500N		
CALCORD	15	MEDICAL	156.0750N	T6 - 156.7	156.0750N	T6 - 156.7	MEDICAL EVAC
AIRGUARD	16	EMERGENCY	168.6250N		168.6250N	T1 - 110.9	EMERGENCY ONLY

9. Prepared by: Name: Josh Clark, Kris McDonald (T), Michael Yeun (T) RESL

Signature: 

ICS 204 Date/Time: 8/27/2020 2200 Personnel Count: 10

ASSIGNMENT LIST (ICS 204 WF)

CONTROLLED UNCLASSIFIED
INFORMATION//BASIC

1. Incident Name: <p style="text-align: center;">SQF COMPLEX</p>	2. Operational Period: Date From: 08/28/20 Date To: 08/29/20 Time From: 0600 Time To: 0600	3. Branch Division <p style="text-align: center;">Y</p>
---	---	---


4. Operations Personnel:		Page 1 of 1 Yankee
Operations Section Chief: Jim Snow, John Owings (T) Branch Director: Division/Group Supervisor: Robb Noxon	Night Ops: Mark Brown Branch Safety: Air Attack:	

5. Resources Assigned:	** Resources in BOLD are 24-hour **						
Resource Identifier	ALS	LWD	Leader	Personnel	Request #	Hours	Reporting Location
HC2IA BLACK EAGLES - 5		9/4	REYES BEDOLLA	21	C-3	0600-1800	R Ranch Spike
WFM CALAVARAS		8/31	SETH GREENE	10	O-100	0600-1800	R Ranch Spike
HC2 BLACK EAGLES - 6		8/31	SCOTT JONES	22	C-4	0600-1800	R Ranch Spike
HC2 COBRAS - 6		9/3	WALTER MEDIM	20	C-6	0600-1800	R Ranch Spike
WFM GROVELAND		9/9	TIMOTHY MARKIN	8	O-186	0600-1800	R Ranch Spike
WT2 PVT VALLEY FARM		9/8	JEFF BATES	1	E-88	0600-1800	R Ranch Spike
DOZ PVT - MUTH EQUIP		9/6	DANNY LEWIS	3	E-5	0600-0600	R Ranch Spike
DOZ2 PVT CONNER		9/8	TIM CONNER	1	E-83	0600-1800	R Ranch Spike
FALM TREE GUYS		9/9	CHASE BISHOP	2	O-178	0600-1800	R Ranch Spike
SOFR WORK		9/8	MICHAEL WORK	1	O-28	0600-1800	R Ranch Spike
FEMP ABBRUZZESE		9/6	ROBERT ABBRUZZESE	1	O-90	0600-1800	R Ranch Spike
FEMP COPEMAN		9/6	ROYCE COPEMAN	1	O-91	0600-1800	R Ranch Spike
READ HASTY		9/6	JAYMEE HASTY	1	O-40	0600-1800	R Ranch Spike
DOZ STF 51		9/6	MIKE NOTT	1	E-118		

6. Work Assignments:
 TASK: Construct direct line into the Kern Canyon following fire's edge from the Div Z / Div Y break to the river's edge.
 Work to contain fire spread to the West between the dozer line & the Kern River.
 PURPOSE: Limit fire spread to the Southern & Eastern fire's edge.
 END STATE: Limit fire spread in the area of Forks Of The Kern & the West side of the river.

7. Special Instructions:
 Use caution when driving on roadways and on the fire line. Be aware of wildlife in the fire area and use caution when encountered.
 Coordinate with Power Company for utility concerns. Backhaul excess equipment and trash.
 Monitor command, air to ground, and respective tactical frequencies. Identify potential Drop Point locations.
 Follow all COVID protocols and precautions, stay safe cover your face and maintain your space.
 Castle Ambulance 1 available from Whitsett Spike Camp. Castle Ambulance 2 available from R Ranch Spike Camp.

8. Communications							
Name	Ch	Function	Rx Freq	Rx Tone	Tx Freq	Tx Tone	Notes
SQF CH2	4	DISPATCH	169.9000N		165.7000N	T8 - 103.5	SEQUOIA CH.2
NIFC T6	8	TACTICAL	166.7750N	T14 - 151.4	166.7750N	T14 - 151.4	
AIR-GROUND TAC	13	A/G TAC	172.3500N		172.3500N		
CALCORD	15	MEDICAL	156.0750N	T6 - 156.7	156.0750N	T6 - 156.7	MEDICAL EVAC
AIRGUARD	16	EMERGENCY	168.6250N		168.6250N	T1 - 110.9	EMERGENCY ONLY

9. Prepared by: Name: Josh Clark, Kris McDonald (T), Michael Yeun (T) RESL
 Signature: 

ASSIGNMENT LIST (ICS 204 WF)

CONTROLLED UNCLASSIFIED
INFORMATION//BASIC

1. Incident Name: <div style="text-align: center; font-weight: bold; font-size: 1.2em;">SQF COMPLEX</div>	2. Operational Period: Date From: 08/28/20 Date To: 08/29/20 Time From: 0600 Time To: 0600	3. Branch	Division <div style="text-align: center; font-size: 1.5em; font-weight: bold;">Z</div>
4. Operations Personnel:		Page 1 of 1	Zulu

Operations Section Chief: Jim Snow, John Owings (T) Branch Director: Division/Group Supervisor: Chris St Pierre	Night Ops: Mark Brown Branch Safety: Air Attack:
---	---


5. Resources Assigned:		** Resources in BOLD are 24-hour **					
Resource Identifier	ALS	LWD	Leader	Personnel	Request #	Hours	Reporting Location
HC2IA BLACK EAGLES - 2		9/3	GUSTAVO SANTOYO	22	C-2	0600-1800	Whitsett Spike
WFM HORSESHOE		9/3	CANDICE KUTROSKY	13	O-1	0600-1800	Whitsett Spike
ENG3 STF-314		9/8	RON PLUMMER	5	E-60	0600-1800	Whitsett Spike
SOFR PILOTTO		9/8	JEFFREY PILOTTO	1	O-27	0600-1800	Whitsett Spike
FEMP SWENSON		9/7	BRYAN SWENSON	1	O-92	0600-1800	Whitsett Spike
REAF RIOS		9/8	MARCOS RIOS	1	O-141	0600-1800	Whitsett Spike
FEMP FISCHER			SILAS FISCHER	1	O-233		

6. Work Assignments:
 TASK: Construct direct line from the Div Z / Div A break along the Castle Mtn ridge. Crews to be prepared to spike.
 PURPOSE: Protect values at risk through structure defense and line construction measures.
 END STATE: Limit fire spread to values at risk on the southwest corner of the fire.

7. Special Instructions:
 Use caution when driving on roadways and on the fire line. Be aware of wildlife in the fire area and use caution when encountered.
 Coordinate with Power Company for utility concerns. Backhaul excess equipment and trash.
 Monitor command, air to ground, and respective tactical frequencies. Identify potential Drop Point locations.
 Follow all COVID protocols and precautions, stay safe cover your face and maintain your space.
 Castle Ambulance 1 available from Whitsett Spike Camp. Castle Ambulance 2 available from R Ranch Spike Camp.

8. Communications

Name	Ch	Function	Rx Freq	Rx Tone	Tx Freq	Tx Tone	Notes
SQF CH2	4	DISPATCH	169.9000N		165.7000N	T8 - 103.5	SEQUOIA CH.2
NIFC T7	9	TACTICAL	168.2500N	T14 - 151.4	168.2500N	T14 - 151.4	
AIR-GROUND TAC	13	A/G TAC	172.3500N		172.3500N		
CALCORD	15	MEDICAL	156.0750N	T6 - 156.7	156.0750N	T6 - 156.7	MEDICAL EVAC
AIRGUARD	16	EMERGENCY	168.6250N		168.6250N	T1 - 110.9	EMERGENCY ONLY

9. Prepared by: Name: Josh Clark, Kris McDonald (T), Michael Yeun (T) RESL
 Signature: 

ICS 204 Date/Time: 8/27/2020 2200 Personnel Count: 43

ASSIGNMENT LIST (ICS 204 WF)

CONTROLLED UNCLASSIFIED
INFORMATION/BASIC

1. Incident Name: <p style="text-align: center; font-weight: bold;">SQF COMPLEX</p>	2. Operational Period: Date From: 08/28/20 Date To: 08/29/20 Time From: 0600 Time To: 0600	3. Branch Division <p style="text-align: center; font-weight: bold;">PONDEROSA STRUCTURE</p>
---	---	---

Page 1 of 1

4. Operations Personnel: Operations Section Chief: Jim Snow, John Owings (T) Branch Director: Division/Group Supervisor: Brad Allen	Night Ops: Mark Brown Branch Safety: Air Attack:
---	---

5. Resources Assigned:	** Resources in BOLD are 24-hour **						
Resource Identifier	ALS	LWD	Leader	Personnel	Request #	Hours	Reporting Location
ENG3 XSB 1521C		9/4	MIKE DEPONCE	21	E-110	0600-1800	Whitsett Spike
TF XTU 5182		9/5	BRIAN DUFFY	16	E-31	0600-1800	Whitsett Spike
TF XTU 5183		9/5	MARK FLEMING	12	E-32	0600-1800	Whitsett Spike
ENG6 FTU 5184F		9/11	JASON ELIZABETH	11	E-115		

6. Work Assignments:
TASK: Implement structure defense for the Pyle's Camp, Ponderosa, Cedar Slope & adjoining communities.
PURPOSE: Protect values at risk from spreading fire.
END STATE: Value at risk communities able to operate in pre-fire condition.

7. Special Instructions:
Use caution when driving on roadways and on the fire line. Be aware of wildlife in the fire area and use caution when encountered.
Coordinate with Power Company for utility concerns. Backhaul excess equipment and trash.
Monitor command, air to ground, and respective tactical frequencies. Identify potential Drop Point locations.
Follow all COVID protocols and precautions, stay safe cover your face and maintain your space.
Castle Ambulance 1 available from Whitsett Spike Camp. Castle Ambulance 2 available from R Ranch Spike Camp.

8. Communications

Name	Ch	Function	Rx Freq	Rx Tone	Tx Freq	Tx Tone	Notes
SQF CH2	4	DISPATCH	169.9000N		165.7000N	T8 - 103.5	SEQUOIA CH.2
VFIRE 25	12	TACTICAL	154.2875N	T6 - 156.7	154.2875N	T6 - 156.7	
AIR-GROUND TAC	13	A/G TAC	172.3500N		172.3500N		
CALCORD	15	MEDICAL	156.0750N	T6 - 156.7	156.0750N	T6 - 156.7	MEDICAL EVAC
AIRGUARD	16	EMERGENCY	168.6250N		168.6250N	T1 - 110.9	EMERGENCY ONLY

9. Prepared by: Name:	Josh Clark, Kris McDonald (T), Michael Yeun (T)	RESL	Signature:
------------------------------	--	------	------------

NIMS IAP CONTROLLED UNCLASSIFIED INFORMATION/BASIC

ASSIGNMENT LIST (ICS 204 WF)

CONTROLLED UNCLASSIFIED
INFORMATION/BASIC

1. Incident Name: <p style="text-align: center;">SQF COMPLEX</p>	2. Operational Period: Date From: 08/28/20 Date To: 08/29/20 Time From: 0600 Time To: 0600	3. Branch Division <p style="text-align: center;">INYO CONTINGENCY</p>
---	---	--

4. Operations Personnel:		Page 1 of 1
Operations Section Chief: Jim Snow, John Owings (T) Branch Director:	Night Ops: Mark Brown	
Division/Group Supervisor: Lee Roesser, Packer	Branch Safety:	
	Air Attack:	

5. Resources Assigned:	** Resources in BOLD are 24-hour **						Hours	Reporting Location
Resource Identifier	ALS	LWD	Leader	Personnel	Request #			
INYO PACK STRING		9/7	LEE ROESSER	3	O-142	0600-1800	Inyo Pack Station	

6. Work Assignments:

TASK: Develop and implement structure defense measures for values at risk in Jordan Hot Springs & Soda Flats

PURPOSE: Limit fire impact to values at risk on the Inyo NF

END STATE: Limit fire damage to the adjoining Inyo NF

7. Special Instructions:

Use caution when driving on roadways and on the fire line. Be aware of wildlife in the fire area and use caution when encountered.

Coordinate with Power Company for utility concerns. Backhaul excess equipment and trash.

Monitor command, air to ground, and respective tactical frequencies. Identify potential Drop Point locations.


Follow all COVID protocols and precautions, stay safe cover your face and maintain your space.

Castle Ambulance 1 available from Whitsett Spike Camp. Castle Ambulance 2 available from R Ranch Spike Camp.

8. Communications

Name	Ch	Function	Rx Freq	Rx Tone	Tx Freq	Tx Tone	Notes
SQF CH2	4	DISPATCH	169.9000N		165.7000N	T8 - 103.5	SEQUOIA CH.2
TBD	0	TBD					TBD
AIR-GROUND TAC	13	A/G TAC	172.3500N		172.3500N		
CALCORD	15	MEDICAL	156.0750N	T6 - 156.7	156.0750N	T6 - 156.7	MEDICAL EVAC
AIRGUARD	16	EMERGENCY	168.6250N		168.6250N	T1 - 110.9	EMERGENCY ONLY

9. Prepared by: Name: Josh Clark, Kris McDonald (T), Michael Yeun (T) RESL

Signature: 

Personnel Count: 3

ICS 204

Date/Time: 8/27/2020 2200

NIMS IAP

CONTROLLED UNCLASSIFIED INFORMATION/BASIC

ASSIGNMENT LIST (ICS 204 WF)

CONTROLLED UNCLASSIFIED
INFORMATION//BASIC

1. Incident Name: SQF COMPLEX	2. Operational Period: Date From: 08/28/20 Date To: 08/29/20 Time From: 0600 Time To: 0600	3. Branch Division CONTINGENCY
--	---	--

4. Operations Personnel: Operations Section Chief: Jim Snow, John Owings (T) Branch Director: Division/Group Supervisor: John Goss		Night Ops: Mark Brown Branch Safety: Air Attack:
--	--	---

Page 1 of 1

5. Resources Assigned:		** Resources in BOLD are 24-hour **						
Resource Identifier	ALS	LWD	Leader	Personnel	Request #	Hours	Reporting Location	
TBD							TBD	

6. Work Assignments:
 TASK: Develop alternatives to limit spread of the fire South of Forks Of The Kern.
 PURPOSE: Determine location that control lines can be constructed should the fire continue movement to the South.
 END STATE: Determination made on ability to construct control lines between Forks Of The Kern & the Johnsondale community.

7. Special Instructions:
 Use caution when driving on roadways and on the fire line. Be aware of wildlife in the fire area and use caution when encountered.
 Coordinate with Power Company for utility concerns. Backhaul excess equipment and trash.
 Monitor command, air to ground, and respective tactical frequencies. Identify potential Drop Point locations.
 Follow all COVID protocols and precautions, stay safe cover your face and maintain your space.
 Castle Ambulance 1 available from Whitsett Spike Camp. Castle Ambulance 2 available from R Ranch Spike Camp.

8. Communications

Name	Ch	Function	Rx Freq	Rx Tone	Tx Freq	Tx Tone	Notes
SQF CH2	4	DISPATCH	169.9000N		165.7000N	T8 - 103.5	SEQUOIA CH.2
TBD	0	TBD					TBD
AIR-GROUND TAC	13	A/G TAC	172.3500N		172.3500N		
CALCORD	15	MEDICAL	156.0750N	T6 - 156.7	156.0750N	T6 - 156.7	MEDICAL EVAC
AIRGUARD	16	EMERGENCY	168.6250N		168.6250N	T1 - 110.9	EMERGENCY ONLY

9. Prepared by: Name:	Josh Clark, Kris McDonald (T), Michael Yeun (T)	RESL	Signature:
ICS 204	Date/Time: 8/27/2020	2200	Personnel Count: 0

ASSIGNMENT LIST (ICS 204 WF)

CONTROLLED UNCLASSIFIED
INFORMATION//BASIC

1. Incident Name:	2. Operational Period:	3. Branch
SQF COMPLEX	Date From: 08/28/20 Date To: 08/29/20 Time From: 0600 Time To: 0600	Division
		SHOTGUN

4. Operations Personnel:		Page 1 of 1
Operations Section Chief: Jim Snow, John Owings (T)	Night Ops: Mark Brown	
Branch Director:	Branch Safety:	
Division/Group Supervisor: TBD	Air Attack:	

5. Resources Assigned:		** Resources in BOLD are 24-hour **					
Resource Identifier	ALS	LWD	Leader	Personnel	Request #	Hours	Reporting Location
TBD							TBD

6. Work Assignments:
 TASK: Fly into the area of the shotgun and assess needs for additional suppression action.
 PURPOSE: Determine needs & suppression actions for wilderness fire.
 END STATE: Limit fire spread through appropriate monitoring and/or actions.

7. Special Instructions:
 Use caution when driving on roadways and on the fire line. Be aware of wildlife in the fire area and use caution when encountered.
 Coordinate with Power Company for utility concerns. Backhaul excess equipment and trash.
 Monitor command, air to ground, and respective tactical frequencies. Identify potential Drop Point locations.
 Follow all COVID protocols and precautions, stay safe cover your face and maintain your space.
 Castle Ambulance 1 available from Whitsett Spike Camp. Castle Ambulance 2 available from R Ranch Spike Camp.

8. Communications							
Name	Ch	Function	Rx Freq	Rx Tone	Tx Freq	Tx Tone	Notes
SQF CH2	4	DISPATCH	169.9000N		165.7000N	T8 - 103.5	SEQUOIA CH.2
TBD	0	TBD					TBD
AIR-GROUND TAC	13	A/G TAC	172.3500N		172.3500N		
CALCORD	15	MEDICAL	156.0750N	T6 - 156.7	156.0750N	T6 - 156.7	MEDICAL EVAC
AIRGUARD	16	EMERGENCY	168.6250N		168.6250N	T1 - 110.9	EMERGENCY ONLY

9. Prepared by: Name: Josh Clark, Kris McDonald (T), Michael Yeun (T) RESL

Signature: Personnel Count: 0

ICS 204 Date/Time: 8/27/2020 2200

AIR OPERATIONS SUMMARY

PREPARED BY: Daniel Sepulveda

PREPARED DATE/TIME- 8/27/20 20:00

1. INCIDENT NAME: SOF COMPLEX		2. OPERATIONAL PERIOD DATE: 8/28/2020		START TIME: 0800	END TIME: 2000	SUNRISE: 0625	SUNSET: 1930						
3. REMARKS (Safety Notes, Hazards, Air Operations Special Equipment,, etc.):													
SOF COMPLEX ROTOR WATER RESTRICTION. (Dip Site Comingling Matrix)													
A to A YES													
B to B YES													
A TO B NO													
B TO A YES													
4. MEDEVAC A/C: H-408 Hoist/ALS at Keen 24/7		5. TFR: 0/7509 Radius: 8 NIM Altitude: 11,000 = MSL Center Point Lat 36 12.00 Long: 118 24.00 (TFR VICTOR 123.725)											
Back up H-552 at Sequoia Kings N.P													
6. PERSONNEL	Phone	7. FREQUENCIES	AM	FM	8. FIXED-WING	# Avail / Type/ Make-Model / FAA N# / Base(s)							
AOBD: JoAnn Overacker	209-559-1617	AIR/AIR		165.9875	Airtankers								
ATGS:		AIR/AIR Rotor	123.725		Leadplanes								
ASGS: Daniel Sepulveda	909-374-8944	A/G RTW	TAC	172.3500	Base FAX #:								
HEBM - PTV Jesse Rodriguez	909-253-4442	A/G RTW	CMD	169.1500	ATGS Aircraft	7TT Relief AA							
HEBM (T)- PTV Darren Stanford	909-702-8344	CALCORD	Medivacs	156.0750	Other								
HEBM - Peppermint Matt Quezada	559-542-2301	DECK FREQ:		163.100									
ATB: Raul Contreas	559-789-0191	TOLC FREQ:	123.975										
9. HELICOPTERS (Use Additional Sheets As Necessary)													
FAA N#	TY	MAKE/MODEL	BASE	AVAIL	START	REMARKS	FAA N#	TY	MAKE/MODEL	BASE	AVAIL	START	REMARKS
1CG	I	S-61	ATB	0800	0830	A-8	5CH	1	Chinook 48D	ATB	0800	0830	A-53
8CH	I	Chinook 48D	ATB	0800	0830	A31	58H	1	S-70	ATB	0800	0830	
9RH	I	Kmax	ATB	0800	0830	A32							
H-523	II	205++	Peppermint	0800	0830	A-11							
H-535	III	Bell 407	ATB	0800	0830	A39							
MISSION: 8/28													
1. Sling Cargo/Shuttle from Peppermint													
2. IC Recon at 1300 as Needed													
3. IC/OPS/DV and other as Requested													
DIPSITE NAME:		LAT/LONG:		DIPSITE NAME:		LAT/LONG:							
1. Confluence Dip All Types		36* 07.72 X 118* 26.34		B 4. (No Restrictions) Lake Dip - Type I		36* 18.44 x 118* 24.25							
2. Rock Creeck Dip Type 1		36* 10.00 x 118* 27.00		B 5. (No restrictions) Round Dip - Type I		36* 12.90 x 118* 28.150							

INCIDENT RADIO COMMUNICATIONS PLAN		Incident Name		SQF Complex		Date/Time Prepared		Operational Period Date/Time	
Zn / Ch	Function	Channel Name/Trunked Talkgroup	Assignment	RX Freq	RX Tone/NAC	TX Freq	TX Tone/NAC	Mode A, D, M	Remarks
1	Command	NIFC C4	All Divisions	170.0000	151.4	166.6750	151.4	A	Jordan Peak
2	Command	NIFC C11	All Divisions	170.6875	151.4	166.5750	151.4	A	Sherman Peak
3	Command	NIFC C31	All Divisions	172.5500	151.4	162.1875	151.4	A	Coyote Peak
4	Dispatch	SQF CH2	All Divisions	169.9000	0.0	165.7000	103.5	A	Sequoia CH 2
5	Tactical	NIFC T1	DIV A/Night	168.0500	151.4	168.0500	151.4	A	
6	Tactical	NIFC T3	DIV B/C/G	168.6000	151.4	168.6000	151.4	A	
7	Tactical	NIFC T5	DIV X	166.7250	151.4	166.7250	151.4	A	
8	Tactical	NIFC T6	DIV Y	166.7750	151.4	166.7750	151.4	A	
9	Tactical	NIFC T7	DIV Z	168.2500	151.4	168.2500	151.4	A	
10	Tactical	R5 T5	Unassigned	167.1125	151.4	167.1125	151.4	A	
11	Tactical	R5 T6	Unassigned	168.2375	151.4	168.2375	151.4	A	
12	Tactical	VFIRE 25	Ponderosa SP	154.2875	156.7	154.2875	156.7	A	
13	Air - Ground Tac	A/G TAC	All Divisions	172.3500	0.0	172.3500	0.0	A	
14	Air - Ground CMD	A/G CMD	All Divisions	169.1500	0.0	169.1500	0.0	A	Overhead Only
15/19	Tactical	CALCORD		156.0750	156.7	156.0750	156.7	A	T6 - Medical Evac
16/20	Emergency only	GUARD	All Divisions	168.6250	0.0	168.6250	110.9	A	T1 - AIR GUARD - emerg. use only
Prepared By (Communications Unit Leader)									
Mike Greene									
Deviation is assumed to be narrow band unless otherwise noted in the remarks. Mode refers to either "A" (analog), "D" (digital) or "M" (mixed mode). 1/14/14 v.5									

Latitude, Longitude
Incident Location
County

MEDICAL PLAN (ICS 206 WF) CIIMT 12

1. Incident Name		2. Operational Period			
SQF COMPLEX		Date/Time: 08/28/2020-8/29/2020 24 hours (0600-0600)			
3. EMS / Ground Ambulance Services/ Aid Stations					
Name	Location	Frequency/Phone	Advanced Life Support (ALS)		
IMPERIAL AMBULANCE	35659 CA-190 SPRINGVILLE, CA	DISP:559-733-6544	YES		
INCIDENT DEDICATED IMPERIAL AMBULANCE	WHITSETT SPIKE CAMP	CASTLE AMB 1 ON CMD	YES		
INCIDENT DEDICATED IMPERIAL AMBULANCE	WHITSETT SPIKE CAMP	CASTLE AMB 2 ON CMD	YES		
ICP AID STATION	PORTERVILLE FAIRGROUNDS ICP	MEDL: 805-813-3858	NO		
WHITSETT AID STATION	WHITSETT SPIKE CAMP	MEDL: 760-376-6469	NO		
4. Air Rescue / Air Ambulance Services					
Name	Phone	Type of Aircraft & Capability			
KERN COUNTY FD H408	CONTACT PORTERVILLE ON CMD	INCIDENT PRIMARY AIR RESCUE, ALS, 24/7 HOIST			
SEQUOIA KINGS CANYON NATIONAL PARKS H552	CONTACT PORTERVILLE ON CMD	SHORT HAUL ONLY, NO MEDICAL OR HOIST			
SKYLIFE	DISPATCH:800-305-5433	Air Ambulance/Rescue - ALS, NO HOIST LZ NEEDS TO BE 100X100			
CHP H40 (FRESNO)	DISPATCH:559-262-0400 1HR FLIGHT TIME RESPONSE	Air Ambulance/Rescue, ALS 24/7, DAY HOIST ONLY STAFFING ON CALL AFTER 1800			
US COAST GUARD	REGIONAL COMMAND CENTER 510-437-3701	AIR RESCUE, HOIST 24/7 ALS/BLS TO BE CONFIRMED DAILY			
5. Hospitals (all times estimated from incident location)					
Name & Level	GPS Datum – WGS 84 Degrees Decimal Minutes	Travel Time Air Gnd	Phone	Helipad Yes No	Address
SIERRA VIEW HOSPITAL 24HR ER, BASIC INJURY	Lat: 36° 4.1478' N	20min 2hr	559-784-1110	X	465 W. Putnam Ave Porterville, CA 93257
	Long: 119° 1.6422' W				
KAWEAH DELTA HEALTH CARE DISTRICT LEVEL 2 TRAUMA	Lat: 36° 19.65' N	30min 2.5hr	559-624-2000	X	400 W. Mineral King Ave. Visalia, CA 93291
	Long: 119° 17.676' W				
KERN MEDICAL CENTER LEVEL 2 TRAUMA	Lat: 35° 22.95' N	45min 3hr	661-333-5194	X	1700 MT Vernon Ave. Bakersfield, CA 93306
	Long: 118° 58.182' W				
COMMUNITY REGIONAL MEDICAL CENTER LEVEL 1 TRAUMA BURN CENTER	Lat: 36° 44.568' N	1hr 3hr	559-459-6000 ER:559-459-4220	X	2823 Fresno St. Fresno, CA 93721
	Long: 119° 47.094' W				
6. Division / Crew Emergency Pre-Plan <i>Update and discuss with assigned resources daily.</i>					
Fireline EMT / Medic's Division / Branch Location					
Air Hoist site location site: Lat: / Long: / Elevation:					
Helispot: Lat: / Long: / Elevation:					
7. Prepared By (Medical Unit Leader)		8. Date/Time	9. Reviewed By (Safety Officer)		10. Date/Time
MEDL Matt Menard 707-364-9259 MEDL (t) Brandon Bennewate 805-813-3858 MEDL (t) Kevin Elledge 661-510-6117		8/27/2020 1800 <i>Brandon Bennewate</i>	SOF2 John Nickey 530-310-3537 SOF2 Paul Tompkins 619-889-7533		8/27/2020 1800 <i>Paul Tompkins</i>

MEDICAL PLAN (ICS 206 WF) CIIMT 12

Medical Incident Report

FOR A NON-EMERGENCY INCIDENT, WORK THROUGH CHAIN OF COMMAND TO REPORT AND TRANSPORT INJURED PERSONNEL AS NECESSARY.

FOR A MEDICAL EMERGENCY: IDENTIFY ON SCENE INCIDENT COMMANDER BY NAME AND POSITION AND ANNOUNCE "MEDICAL EMERGENCY" TO INITIATE RESPONSE FROM IMT COMMUNICATIONS/DISPATCH.

Use the following items to communicate situation to communications/dispatch.

1. CONTACT COMMUNICATIONS / DISPATCH (Verify correct frequency prior to starting report)

Ex: "Communications, Div. Alpha. Stand-by for Emergency Traffic."

2. INCIDENT STATUS: Provide incident summary (including number of patients) and command structure.

Ex: "Communications, I have a Red priority patient, unconscious, struck by a falling tree. Requesting air ambulance to Forest Road 1 at (Lat./Long.) This will be the Trout Meadow Medical, IC is TFLD Jones. EMT Smith is providing medical care."

Severity of Emergency / Transport Priority	<input type="checkbox"/> RED / PRIORITY 1 Life or limb threatening injury or illness. Evacuation need is IMMEDIATE <i>Ex: Unconscious, difficulty breathing, bleeding severely, 2° – 3° burns more than 4 palm sizes, heat stroke, disoriented.</i> <input type="checkbox"/> YELLOW / PRIORITY 2 Serious injury or illness. Evacuation may be DELAYED if necessary. <i>Ex: Significant trauma, unable to walk, 2° – 3° burns not more than 1-3 palm sizes.</i> <input type="checkbox"/> GREEN / PRIORITY 3 Minor injury or illness. Non-Emergency transport <i>Ex: Sprains, strains, minor heat-related illness.</i>	
Nature of Injury or Illness Mechanism of Injury		<i>Brief Summary of Injury or Illness (Ex: Unconscious, Struck by Falling Tree)</i>
Transport Request		<i>Air Ambulance / Short Haul/Hoist Ground Ambulance / Other</i>
Patient Location		<i>Descriptive Location & Lat. / Long. (WGS84)</i>
Incident Name		<i>Geographic Name + "Medical" (Ex: Trout Meadow Medical)</i>
On-Scene Incident Commander		<i>Name of on-scene IC of Incident within an Incident (Ex: TFLD Jones)</i>
Patient Care		<i>Name of Care Provider (Ex: EMT Smith)</i>

3. INITIAL PATIENT ASSESSMENT: Complete this section for each patient as applicable (start with the most severe patient)

Patient Assessment: See IRPG PAGE 106

Treatment:

4. TRANSPORT PLAN:

Evacuation Location (if different): (Descriptive Location (drop point, intersection, etc.) or Lat. / Long.) Patient's ETA to Evacuation Location:

Helispot / Extraction Site Size and Hazards:

5. ADDITIONAL RESOURCES / EQUIPMENT NEEDS:

Example: Paramedic/EMT, Crews, Immobilization Devices, AED, Oxygen, Trauma Bag, IV/Fluid(s), Splints, Rope rescue, Wheeled litter, HAZMAT, Extrication

6. COMMUNICATIONS: Identify State Air/Ground EMS Frequencies and Hospital Contacts as applicable

Function	Channel Name/Number	Receive (RX)	Tone/NAC *	Transmit (TX)	Tone/NAC *
COMMAND					
AIR-TO-GRND					
TACTICAL					

7. CONTINGENCY: Considerations: If primary options fail, what actions can be implemented in conjunction with primary evacuation method? Be thinking ahead.

8. ADDITIONAL INFORMATION: Updates/Changes, etc.

REMEMBER: Confirm ETA's of resources ordered. Act according to your level of training. Be Alert. Keep Calm. Think Clearly. Act Decisively.

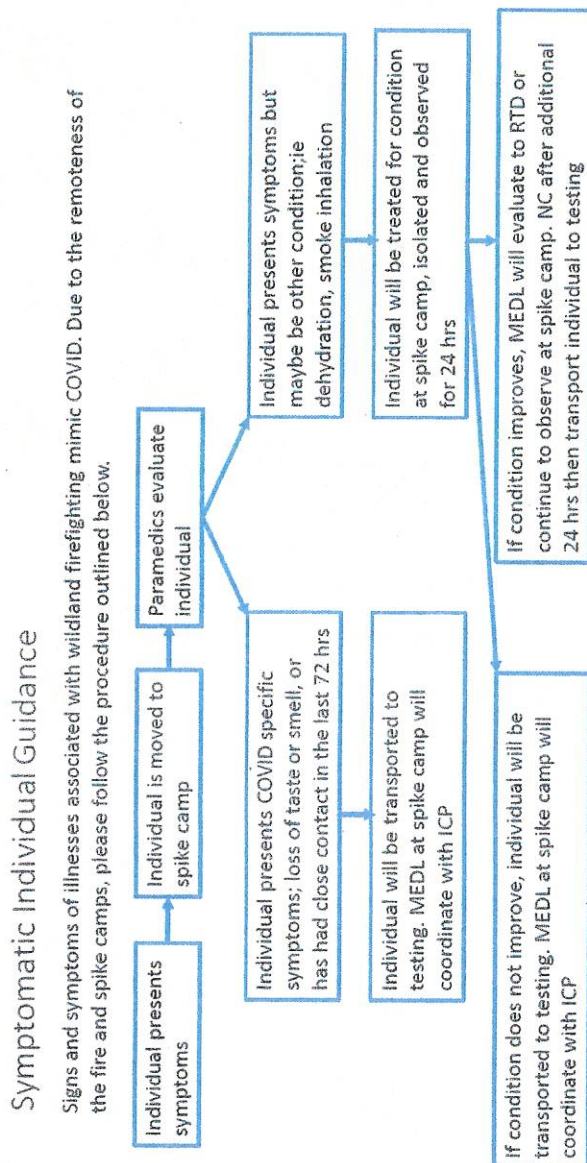
COVID-19 PLAN	1. INCIDENT NAME SQF COMPLEX	2. DATE PREPARED 08/27/20	3. TIME PREPARED 1500	4. OPERATIONAL PERIOD 08/28/20 - 08/29/20 24HR				
5. INCIDENT MEDICAL AID STATIONS								
MEDICAL AID STATIONS	LOCATION			ISOLATION				
				YES NO				
ICP MEDL	PORTERVILLE FAIRGROUNDS			X				
WHITSETT SPIKE CAMP	CAMP WHITSETT KERNVILLE, CA			X				
6. LOCAL SUPPORT								
A. OFF-SITE ISOLATION FACILITIES								
NAME	LOCATION	PHONE	MEDICAL					
			YES	NO				
MARRIOTT HOTEL	VISALIA, CA	SEE BELOW		X				
VARIOUS: COORDINATE WITH COVID SPECIALIST AND MEDL	ICP/WHITSETT	530-957-6152 805-813-3858	X					
B. PUBLIC HEALTH / IMO								
NAME	LOCATION	TESTING						
		YES NO						
ANNETTE BURGOS	TULARE COUNTY PUBLIC HEALTH	X						
DENISE ALONZO	PORTERVILLE IMO IC	X						
STEVE HALL	INCIDENT ICP COVID SPECIALIST	X						
7. TESTING FACILITIES								
NAME	ADDRESS	TRAVEL TIME		PHONE	HELIPAD		BURN CENTER	
		AIR	GRND		YES	NO	YES	NO
CENTRAL VALLEY OCC HEALTH	4100 TRUXTON AVE BAKERSFIELD, CA 93309		1HR	661-632-1540		X		X
8. COVID-19 PROCEDURES								
IN-CAMP SCREENINGS			FIELD SCREENINGS					
<ul style="list-style-type: none"> Notify supervisor if you have symptoms (see briefing checklist) 			<ul style="list-style-type: none"> <u>Start of shift:</u> notify your Div. Sup of EMT's/Paramedic's and Medical gear carried by crew 					
<ul style="list-style-type: none"> IMMEDIATELY separate yourself from others 			<ul style="list-style-type: none"> Crew Supervisor contacts Division with Nature of Emergency. 					
<ul style="list-style-type: none"> Follow plans to isolate , triage, and transport 			<ul style="list-style-type: none"> Division Supervisor contact's Communications and declare a medical emergency on command 					
<ul style="list-style-type: none"> Supervisor notifies MEDL 			<ul style="list-style-type: none"> Closest DIVS or designee responds to incident 					
<ul style="list-style-type: none"> MEDL responds to patient location 			<ul style="list-style-type: none"> Closest SOFR/EMT's respond to assist w/care 					
<ul style="list-style-type: none"> MEDL provides for appropriate care 			<ul style="list-style-type: none"> Use attached Injury or Incident Comm. Protocol 					
<ul style="list-style-type: none"> Notifications, transport, and destination will be determined based on patient symptoms 			<ul style="list-style-type: none"> If ambulance (ground or air) delayed designate rendezvous site and move towards it 					
<ul style="list-style-type: none"> Contact tracing for any exposures 			<ul style="list-style-type: none"> Secure scene for investigation—keep a log 					
ICS COVID-19 206	9. PREPARED BY (MEDICAL UNIT LEADER) BRANDON BENNEWATE MEDL(T) BRANDON BENNEWATE			10. REVIEWED BY (SAFETY OFFICER) PAUL TOMPKINS SOF2 PAUL TOMPKINS				

Symptomatic individual guidance

Signs and symptoms of illnesses associated with wildland firefighting mimic COVID. Due to the remoteness of the fire and spike camps, guidance has been provided on dealing with symptomatic individuals.

A COVID evaluation process has been published as an attachment. Division Chiefs will be responsible for screening resources daily with module supervisors for COVID.

Personnel must wear masks when in camp and social distancing is not possible. Masks will help to limit the spread of COVID virus. A COVID outbreak in camp will shut down the fire suppression efforts, place colleagues at risk, and potentially have personnel pulled off the fire.



Fire and COVID-19 Briefing Checklist

Self-Awareness / Screening

- Notify supervisor if you or others experience:
 - Cough, more than expected
 - Difficulty breathing
 - Loss of taste or smell
 - Fever
 - Chills
 - Sore throat
 - Muscle pain
- Immediately separate yourself from others.
- Follow crew and division plans to isolate, triage, and transport symptomatic personnel.

Hygiene on the Fireline

- Properly wash or sanitize your hands often
- Avoid handshakes and communal use items
- Inform supervisor of needed resupply.
- Disinfect high touch surfaces often

Social distancing and protective equipment

- Practice social distancing
- Conduct briefings in conversations outdoors and at least SIX feet apart
- Utilize face coverings
- Clean or replace dirty face coverings, equipment, and PPE

Communications

- Ensure effective sender/receiver messaging.
- Protect yourself, your crew, and your camp!

Any questions contact:

MEDL (T) Brandon Bennewate @ (805) 813-3858
MEDL (T) Kevin Elledge @ (661) 510-6117



Human Resource Message
SQF Complex
Friday, August 28, 2020

HUMAN RESOURCE MESSAGE

Communication is a two-way street. When communication becomes a one-way, it becomes a traffic jam and turns into an issue. Some examples are:

- Someone irritating you and getting on your nerves, but you don't say anything until it boils over and causes a crash.
- A misunderstanding of what someone was trying to communicate to you, but you didn't take the time to clarify what was said and just stewed about it.
- It can be like the telephone game. It starts with specific information and by the time it gets to the end it very different than what was first communicated.

Whatever it is, clear the communication lines in a respectful manner and make it a smooth safe flowing two way street!



“The single biggest problem in communication is the illusion that it has taken place”....by George Bernard Shaw

Feel free to call/text if you have questions, concerns, or just want to chat.

Todd Morrow - (HRSP) – (707) 373-0204



Smoke Outlook for 8/27 - 8/28
Southern Sierra - Sequoia Complex
 Issued at: 2020-08-27 07:18 PDT

Special Statement

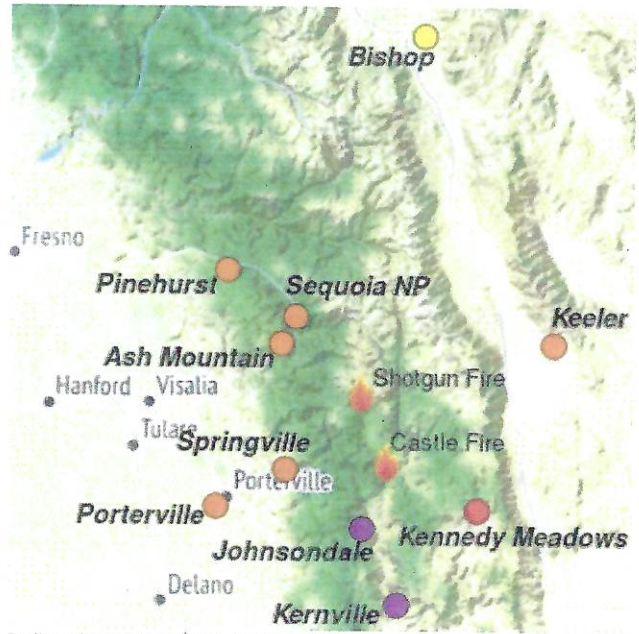
This outlook addresses and is based on PM2.5 concentrations due to wildfire smoke only.

Fire

The Sequoia Complex is 20,979 acres in size, an increase of 2799 acres. Active fire behavior will continue in a mix of grass, brush, and timber fuels over complex backcountry terrain. Reduced available fuels due to previous fires in the area are limiting growth in some areas. For more information visit <https://inciweb.nwcg.gov/incident/7048/>

Smoke

Overnight down canyon drainage under an inversion along the Kern river will create impaired conditions from the fire's location to Lake Isabella. Monitors at Johnsondale and Kernville are indicating Unhealthy to Hazardous conditions from dawn to early afternoon under this pattern. This smoke will also contribute to the pool of smoke from other fires in the state gathering in the San Joaquin Valley, impacting communities from Porterville to Pinehurst. Once the inversion breaks around mid-day, smoke will lift and flow northeast into the Owens Valley, with increased impacts from Keeler to Bishop in the late afternoon. With the inversion lift, the Kern river drainage may see some improvement in air quality until about midnight when this pattern begins again.



Daily AQI Forecast* for Aug 27, 2020

Station	Yesterday			Wed 8/26	Forecast* Comment for Today -- Thu, Aug 27	Thu 8/27	Fri 8/28
	6a	noon	6p				
Pinehurst	[Yellow bar]			[Yellow circle]	Unhealthy for Sensitive Groups throughout the day.	[Orange circle]	[Orange circle]
Sequoia NP	[Yellow bar]			[Yellow circle]	Unhealthy for Sensitive Groups throughout the day.	[Orange circle]	[Orange circle]
Ash Mountain	[Yellow bar]			[Yellow circle]	Unhealthy for Sensitive Groups throughout the day.	[Orange circle]	[Orange circle]
Springville	[Yellow bar]			[Yellow circle]	Unhealthy for Sensitive Groups throughout the day.	[Orange circle]	[Orange circle]
Porterville	[Yellow bar]			[Yellow circle]	Unhealthy for Sensitive Groups throughout the day.	[Orange circle]	[Orange circle]
Johnsondale	[Purple bar]			[Purple circle]	Very Unhealthy conditions today	[Purple circle]	[Purple circle]
Kernville	[Purple bar]			[Purple circle]	Very Unhealthy conditions today	[Purple circle]	[Purple circle]
Kennedy Meadows	[Red bar]			[Red circle]	Unhealthy conditions today	[Red circle]	[Red circle]
Keeler	[Orange bar]			[Orange circle]	Unhealthy for Sensitive Groups changing to Unhealthy in the afternoon.	[Orange circle]	[Orange circle]
Bishop	[Yellow bar]			[Yellow circle]	Moderate conditions most of the day.	[Yellow circle]	[Yellow circle]

Issued 2020-08-27 07:18 PDT by Paul Schlobohm, ARA, pschlobo@gmail.com

Air Quality Index (AQI)	Actions to Protect Yourself
[Green circle] Good	None
[Yellow circle] Moderate	Unusually sensitive individuals should consider limiting prolonged or heavy exertion.
[Orange circle] USG	People within Sensitive Groups* should reduce prolonged or heavy outdoor exertion.
[Red circle] Unhealthy	People within Sensitive Groups* should avoid all physical outdoor activity.
[Purple circle] Very Unhealthy	Everyone should avoid prolonged or heavy exertion.
[Dark red circle] Hazardous	Everyone should avoid any outdoor activity.

***Disclaimer:** This forecast is based on fine particulates only; ozone is not included. Forecasts may be wrong; use at own risk. Use caution as conditions can change quickly. See your health professional as needed. Smoke sensitive groups should take appropriate precautions.

Additional Links

California Smoke Blog -- <http://californiafireandairquality.blogspot.com/>
 San Joaquin APCD -- <http://www.valleyair.org>
 Fire and Smoke Map -- <https://fire.airnow.gov/#>

Eastern Kern APCD -- <http://www.kernair.org>
 Great Basin Unified APCD -- <https://www.gbuapcd.org/>



Issued by USFS Wildland Fire Air Quality Response Program -- www.wildlandfiresmoke.net
 Southern Sierra - Sequoia Current Outlook -- tools.airfire.org/outlooks/SouthernSierra-Sequoia
 *Smoke and Health Info -- www.airnow.gov/index.cfm?action=smoke.index



Pronóstico de Humo para 27/08 - 28/08

Actualizado: 2020-08-27 08:24 PDT

Aviso Especial

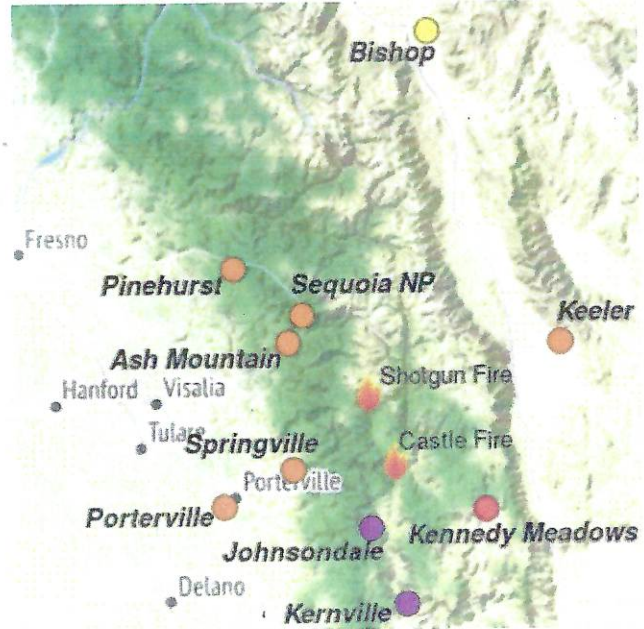
Este pronóstico se basa en concentraciones de PM2.5 procedentes solamente de el humo de incendios forestales.

Incendio

El conjunto de fuegos Sequoia tiene un tamaño de 20,979 acres, luego de haber crecido 2,799 acres. El comportamiento de fuego activo continuará con combustibles que incluyen pasto, matorrales y madera en terrenos de campo complicados. La reducción de combustibles disponibles, debido a incendios anteriormente vistos en el área, está limitando el crecimiento del fuego en algunas áreas. Para obtener más información, visite <https://inciweb.nwcg.gov/incident/7048/>

Humo

Durante la noche, el drenaje del cañón a lo largo del río Kern estará bajo una inversión que creará el deterioro de las condiciones desde la ubicación del incendio hasta Lake Isabella. Bajo este patrón, los monitores en Johnsondale y Kernville están mostrando condiciones entre Insalubres y Peligrosas, desde el amanecer hasta las primeras horas de la tarde. El humo de este conjunto de fuegos también contribuirá a la nube de humo de otros incendios en el estado que se concentra en el Valle de San Joaquín, lo que afectará a comunidades desde Porterville hasta Pinehurst. Una vez que la inversión se rompa, alrededor del mediodía, el humo se levantará y fluirá hacia el noreste, hacia el valle de Owens, aumentando el impacto desde Keeler hasta Bishop al final de la tarde. Con la elevación de la inversión, el drenaje del río Kern puede ver una pequeña mejoría en la calidad del aire hasta aproximadamente la medianoche, cuando este patrón comienza de nuevo.



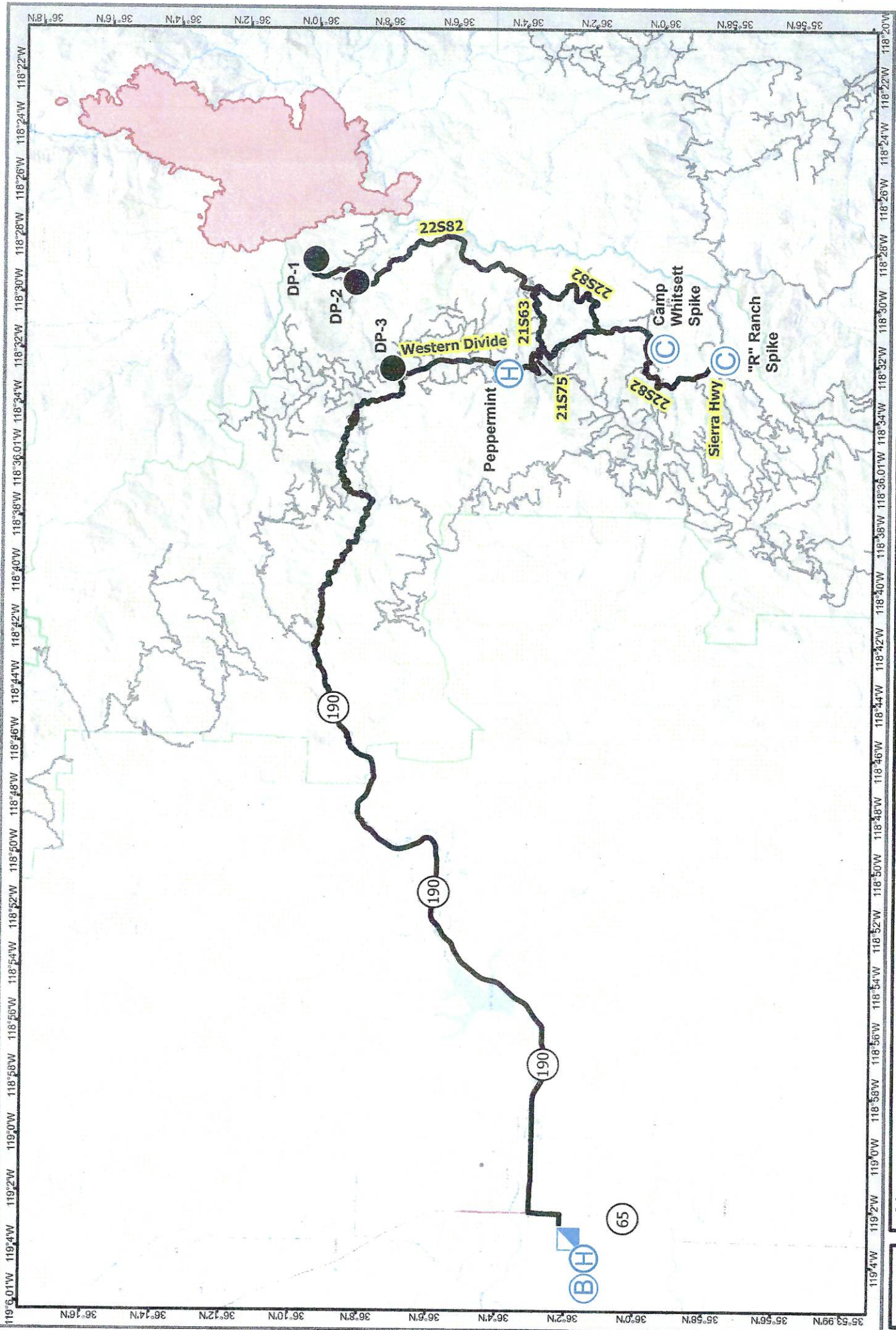
Pronóstico del ICA* para 27 de agosto de 2020

Estación	Ayer			mié 26/08	Pronóstico para hoy -- jue, 27 de agosto	Pronóstico*	jue 27/08	vie 28/08
	hora por hora	6a	noon					
Pinehurst	[Bar chart showing smoke levels]			[Yellow circle]	Insalubre para Grupos Sensitivos (IGS) durante todo el día.	[Yellow circle]	[Orange circle]	[Orange circle]
Sequoia NP	[Bar chart showing smoke levels]			[Yellow circle]	Insalubre para Grupos Sensitivos (IGS) durante todo el día.	[Yellow circle]	[Orange circle]	[Orange circle]
Ash Mountain	[Bar chart showing smoke levels]			[Yellow circle]	Insalubre para Grupos Sensitivos (IGS) durante todo el día.	[Yellow circle]	[Orange circle]	[Orange circle]
Springville	[Bar chart showing smoke levels]			[Yellow circle]	Insalubre para Grupos Sensitivos (IGS) durante todo el día.	[Yellow circle]	[Orange circle]	[Orange circle]
Porterville	[Bar chart showing smoke levels]			[Yellow circle]	Insalubre para Grupos Sensitivos (IGS) durante todo el día.	[Yellow circle]	[Orange circle]	[Orange circle]
Johnsondale	[Bar chart showing smoke levels]			[Red circle]	Condiciones Muy insalubres hoy	[Red circle]	[Purple circle]	[Purple circle]
Kernville	[Bar chart showing smoke levels]			[Yellow circle]	Condiciones Muy insalubres hoy	[Yellow circle]	[Purple circle]	[Purple circle]
Kennedy Meadows	[Bar chart showing smoke levels]			[Orange circle]	Condiciones Insalubres hoy	[Orange circle]	[Red circle]	[Red circle]
Keeler	[Bar chart showing smoke levels]			[Yellow circle]	Insalubre para Grupos Sensitivos (IGS), cambiando a Insalubre por la tarde.	[Yellow circle]	[Orange circle]	[Orange circle]
Bishop	[Bar chart showing smoke levels]			[Yellow circle]	Condiciones Moderadas la mayor parte del día.	[Yellow circle]	[Yellow circle]	[Yellow circle]

Emitido 2020-08-27 08:24 PDT por Paul Schlobohm, ARA, pschlobo@gmail.com

Índice de Calidad del Aire (ICA)	Acciones para protegerse
[Green circle] Buena	No se anticipan impactos a la salud.
[Yellow circle] Moderada	Personas extraordinariamente sensitivas deben considerar limitar esfuerzos físicos excesivos y prolongados al aire libre.
[Orange circle] IGS	Personas en Grupos Sensibles* deben reducir esfuerzos físicos excesivos y prolongados al aire libre.
[Red circle] Insalubre	Personas en Grupos Sensible* deben evitar todo esfuerzo físico excesivo y prolongado al aire libre.
[Purple circle] Muy Insalubre	Todos deben evitar el esfuerzo físico excesivo y prolongado al aire libre.
[Dark Purple circle] Peligrosa	Todos deben evitar toda actividad al aire libre.

***Relevo de responsabilidad:** Este pronóstico se basa solo en partículas finas; el ozono no está incluido. Los pronósticos pueden ser incorrectos; usar bajo su propio riesgo. Tenga cuidado ya que las condiciones pueden cambiar rápidamente. Consulte con su profesional médico cuando sea necesario. Grupos sensibles al humo deben tomar precauciones.



SFQ Complex
 CA-SQF-002622
 TRANSPORTATION
 MAP
 Aug 28, 2020



- Incident Base
- Camp
- Drop Point
- Helibase
- Incident Command Post

Transportation Map
SFQ Complex
 CA-SQF-002622



UNIT LOG (ICS 214)

1. Incident Name: SQF COMPLEX	2. Operational Period: Date From: 8/28/20 Date To: 8/29/20		
	Time From: 0600	Time To: 0600	

3. Unit Name/Designators	4. Unit Leader (Name and ICS Position)
---------------------------------	---

5. Personnel Assigned/Designators		
NAME	ICS POSITION	HOME BASE

6. Activity Log (Continue on Reverse)	
TIME	MAJOR EVENTS

7. Prepared By:	Date/Time:
-----------------	------------

