

Saturday

INCIDENT ACTION PLAN

SQF COMPLEX

CA-SQF-002622

P5NG2P (0513)



Scan for:

IAP's

Maps

Check In

DMOB

Finance

OPERATIONAL PERIOD

8/29/2020 0600

to

8/30/2020 0600

INCIDENT OBJECTIVES (ICS 202)

1. Incident Name: SQF COMPLEX	2. Operational Period:	Date From: 8/29/2020	Date To: 8/30/2020
		Time From: 0600	Time To: 0600

3. Objective(s):

Management Objectives

- Provide for firefighter and public safety as the highest priority through sound risk management and life first principles
- Minimize adverse effects from suppression actions on riparian areas, watersheds, Little Kern Golden Trout, Mountain Yellow Legged Frog and Sierra Nevada Bighorn Sheep habitats
- Minimize impacts to Wilderness areas. Use minimum impact suppression tactics (MIST) by utilizing trails, streams, ridges and natural barriers when possible for control lines
- Minimize, to the extent feasible, smoke exposure to firefighters, communities, and other affected areas to reduce susceptibility to the consequences from COVID-19 exposure
- Effectively manage cost of the incident by planning strategies and tactics toward a high probability of success in meeting incident objectives
- Provide accurate and timely information to agencies, stakeholders, backcountry users, and the public

Control Objectives

- Keep the fire North of Durr Wood Camp
- Keep the fire South of Sequoia Kings Canyon Wilderness Boundary
- Keep the fire East of Highway 190 to Summit Trail
- Keep the fire West of Toowa Range to King Fisher Ridge to 22S05 Road

COVID Mitigations

- Module of 1, six foot social distancing and wear a mask
- Wash your hands and sanitize surfaces

5. Site Safety Plan Required? Yes No

Approved Site Safety Plan(s) Located at:


6. Incident Action Plan

<input checked="" type="checkbox"/> ICS 203	<input checked="" type="checkbox"/> ICS 215A	<input type="checkbox"/> ICS 205 A	<input type="checkbox"/>
<input checked="" type="checkbox"/> ICS 204	<input checked="" type="checkbox"/> ICS 220	<input checked="" type="checkbox"/> Training Message	<input type="checkbox"/>
<input checked="" type="checkbox"/> ICS 205	<input checked="" type="checkbox"/> Facility Maps	<input type="checkbox"/> Travel Map	<input checked="" type="checkbox"/> HR MESSAGE
<input checked="" type="checkbox"/> ICS 206	<input checked="" type="checkbox"/> Weather Forecast	<input type="checkbox"/> Demob Plan	<input checked="" type="checkbox"/> COVID BRIEFING CHECKLIST
<input checked="" type="checkbox"/> ICS 208	<input checked="" type="checkbox"/> Fire Behavior	<input checked="" type="checkbox"/> Finance Message	<input checked="" type="checkbox"/> ICS 214

7. Prepared By: Steve Anderson, Greg White (T) **Position/Title:** **PSC Signature:**

8. Approved by Incident Commander: Mike Nobles, Alan Taylor (T) **Signature:**

ORGANIZATION ASSIGNMENT LIST (ICS 203)

1. Incident Name: SQF COMPLEX		2. Operational Period: Date From: 8/29/2020		Date To: 8/30/2020	
		Time From: 0600		Time To: 0600	
3. Incident Commander(s) and Command Staff:			7. Operation Section:		
IC/UC's	Mike Nobles, Alan Taylor (T)	Operations	Jim Snow, John Owings (T)		
Deputy	Robert Laeng	Deputy Operations	Matt Conklin		
Safety Officer	Paul Tompkins, John Nickey	Night Ops	Mark Brown		
Information Officer	Seneca Smith, Alex Olow (T)	Planning Ops	Don Smith, John Goss (Deputy)		
Liaison Officer	Larry LaVogue	Branch			
Human Resources	Todd Morrow	Division/Group	A	Ken VanWig, Chris Ware (T)	
COVID IC Rep	Alan Taylor (T)	Division/Group	B	Logan Sanders	
4. Agency/Organization Representatives:		Division/Group	C	TBD	
AA SQF	Teresa Benson	Division/Group	G	TBD	
AA SQF	Al Watson	Division/Group	X	Jason Flores	
AA INF	David Andersen	Division/Group	Y	Robb Noxon	
AA INF	John (Pancho) Smith	Division/Group	Z	Chris St Pierre	
AA SEKI	Lee Taylor	Division/Group	PONDEROSA STRUCTURE	Brad Allen	
Chief 1 SQF	Angie Sanchez-Hand	Division/Group	LLOYD STRUCTURE	Brian Duffy	
Sequoia & Kings NPS	John Ziegler	Division/Group	INYO PACK STRING	Lee Roeser, Packer	
Tulare Co FD	Pete Marquez	Division/Group	SHOTGUN	TBD	
Tulare Co Sheriff	Bobby Rader	Division/Group	NIGHT	Mark Brown	
SoCal Edison	Troy Whitman	Division/Group			
CHP	Chad Patterson	Division/Group			
Tribal Liaison	Dirk Charley	Division/Group			
Tule River Tribe	Zane Santos	Division/Group			
		Division/Group			
5. Planning Section:		Branch			
Chief	Steve Anderson, Greg White (T)	Division/Group			
Deputy	Ken Bates	Division/Group			
Resource Unit	Josh Clark, Kris McDonald (T), Michael Yeun (T)	Division/Group			
Situation Unit	John Hamer	Division/Group			
Documentation Unit	Jenny Rechel	Division/Group			
Demobilization Unit	Bill Kershaw	COVID - 19 Group			
GISS	Rich Murillo, Sarah Soinit, Jen House	COVID Advisor	Steve Hall		
FBAN	Dan O'Connor(V), Lauren Blake (T)	Logistics Rep	David Alicea		
LTAN	Tim Sexton	Medical Rep	Brandon Bennewate (T)		
IMET	Andy Gorelow	Human Resources Rep	Todd Morrow		
Status Check-In	Lisa Gammell, Jason Elledge	Safety Rep	John Nickey		
READ	Josh Courter, Adam Barnett	Air Operations Branch		Director:	Joann Overacker
Air Resource Advisor	Paul Schlobohm	Air Support Group Supervisor		Daniel Sepulveda	
Training Specialist	Heather Grove (V)	Air Tactical Group Supervisor			
6. Logistics Section		Porterville Helibase Manager		Jesse Rodriguez	
Chief	David Alicea, Scott Ashbach	Peppermint Helibase Manager		Matt Quezada	
Supply Unit	Jason Kramer (T)	8. Finance/Administration Section:			
Facilities Unit	Art Curley	Chief	Lisa Wilson		
Ground Support Unit	Mark Bagley	Time Unit	Rebecca Lang (T)		
Communications Unit	Christopher Perry	Personnel Time	Cara Scott		
Medical Unit	Matt Menard, Brandon Bennewate (T)	Equipment Time	Alejandra Godoy, Chenling Chen		
IT Services Unit	Brett Davidson, Dale Ho	Comp/Claims Unit	Larry Medrano		
Base Camp Manager	Dave Seneviratne (T)	Cost Unit			
Prepared By: Name: Steve Anderson, Greg White (T)		PSC	Signature: 		
ICS 203		Date/Time:	8/28/2020 2300 hours		



FIRE WEATHER FORECAST



FORECAST NO: 5
PREDICTION FOR: Aug 29th – Aug 30th 0600

INCIDENT NAME: SQF Complex
UNIT: CA-SQF
SIGNED: Andrew Gorelow

TIME AND DATE

FORECAST ISSUED: Fri, Aug 28 @ 1900 hours

Incident Meteorologist – Andrew Gorelow

WEATHER DISCUSSION: Dry conditions will remain over the fire for the next several days. Morning RH recoveries in the 40-50% range will drop into the teens and possibly into the upper single digits once the inversion lifts between 0900-1000. When the inversion lifts winds will shift to the south to southwest, but also be affected heavily by the local terrain which may cause some southeast winds along the far western section of the fire. Wind speeds will generally be 6 to 10 mph with occasional gusts to 15 mph. Winds will remain gusty through 2000 before decreasing the becoming downslope/downvalley. The inversion is expected to develop by late evening.

SKY/WEATHER TODAY (SATURDAY): Smoky in the morning with some clearing by early afternoon. Inversion breaking between 0900-1000 with south to southwest winds increasing to 6 to 10 mph with gusts to 15 mph. Winds will be heavily impacted by the local terrain which could cause some southeast winds up to 10 mph on the western edges of the fire. Just a few clouds over the higher peaks.

MAX TEMPERATURES / MIN RELATIVE HUMIDITY:

5000 FT: 88 to 94 degrees (Little Change) / 10 to 15% (Down 2-4%)
7000 FT: 78 to 83 degrees (Little Change) / 9 to 14% (Down 2-3%)

EYE LEVEL WINDS:

Slope/Valley:

North to northeast drainage winds up to 4 mph in the morning through 1000 with winds following the Little Kern and Kern Rivers. Winds will gradually shift to the south to southwest after 1200 with speeds 4 to 7 mph gusting to 12 mph. Those south to southwest winds will generally align with the local terrain. Winds shifting to the west with gusts up to 15 mph after 1600.

Ridges:

Southwest 4 to 7 mph occasional gusts to 10 mph in the afternoon, winds expected to shift more westerly after 1600.

MIXING HEIGHT...10,500 feet AGL **VENTILATION...**Poor morning, Excellent in the afternoon.
TRANSPORT WIND...Southeast around 5 mph in the morning, southwest 10 to 15 mph in the afternoon.
CWR (0.10")...0% **LAL....**1 **HAINES....**5 (2-Stability/3-Dryness)

SKY/WEATHER TONIGHT (SATURDAY NIGHT): Clear. Winds becoming light drainage after 2000 but could remain squirrely near the confluence of the Little Kern/Kern Rivers. Valleys to become very smoky by morning. Overnight RH expected to be poor to moderate.

MIN TEMPERATURES / MAX RELATIVE HUMIDITY

5000 FT: 57 to 62 degrees (Little Change) / 40 to 50% (Down 2-4%)
7000 FT: 55 to 60 degrees (Little Change) / 28 to 33% (Down 2-4%)

20 FOOT WINDS:

Slope/Valley:

Light drainage winds developing after 2000, especially following the Little Kern and Kern Rivers.

Ridges:

Northwest 1 to 3 mph.

CWR (0.10")...0% **LAL....**1

SUNDAY: Morning smoke then becoming mostly sunny in the afternoon. Slight increase in temperatures and decrease in RH. Little change in wind patterns.

Max Temps: 78 to 93. **Min RH:** 13 to 23%. **Winds:** Morning drainage winds becoming generally upslope/upvalley on in the lower elevations with a southwest wind 5 to 10 mph on the ridges in the afternoon.

LAL: 1 **CWR (0.10"):** 0% **MIXING HEIGHT:** 11,500 feet AGL **HAINES:** 5 (2-Stability/3-Dryness)

OUTLOOK for MONDAY and TUESDAY:

Weather: Smoky morning with mostly sunny afternoon. Minimal changes in temperature and RH. **High Temp:** 78-91
Min RH: 18-25% **CWR:** 0% **LAL:** 1 **Wind:** Southwest 4 to 7 mph in the afternoon.

FIRE BEHAVIOR FORECAST

FORECAST NUMBER: 8	TYPE OF FIRE: Wildland
FIRE NAME: SQF Complex	OPERATIONAL PERIOD: Aug 29, Day/Night 24 Hr
DATE ISSUED: August 28, 2020	TIME ISSUED: 1800
UNIT: CA-Sequoia National Forest	SIGNED: /s/ Dan O'Connor FBAN/ Lauren Blake FBAN(t)

WEATHER SUMMARY

Dry conditions will remain over the fire for the next several days. Morning RH recoveries in the 40-50% range will drop into the teens and possibly into the upper single digits once the inversion lifts between 0900-1000. When the inversion lifts winds will shift to the south to southwest, but also be affected heavily by the local terrain which may cause some southeast winds along the far western section of the fire.

FIRE BEHAVIOR

GENERAL

Fuels The Fire is burning in an area of the SQF backcountry that doesn't have a lot of recent fire history. To the East and South of the fire is the 2002 McNally and 2017 Schaeffer burn scars, to the West the Pier (2017), the Lion (2017) to the north, and directly adjacent is the smaller George Fire (2012). The Pier, Lion, and Schaeffer should offer solid opportunities to slow fire spread.

Topography Complex terrain features of the Golden Trout Wilderness will highly influence fire spread direction and speed. Higher terrain will be exposed to SW flow, while the drainages will see more Southerly up drainage afternoon winds and Northerly down drainage winds at night.

Weather: Smoky in the morning with some clearing by early afternoon. Inversion breaking between 0900-1000 with south to southwest winds increasing to 6 to 10 mph with gusts to 15 mph. **Winds will be heavily impacted by the local terrain which could cause some southeast winds up to 10 mph one the western edges of the fire.**

	Max Rate of Spread	Max Flame Lengths	Spotting Distances	POI
<i>Head</i>	80 ch/hr.	10-14'	<500'	80%
<i>Flanking</i>	24-30 ch/hr.	6-8'	<100	80%
<i>Backing</i>	2-4 ch/hr.	1-3'	0	80%

SPECIFIC

Div. A/B Active backing/ flanking fire into the afternoon winds.

Div. C Active backing/ flanking fire into the afternoon winds but progressions will slow in the 2017 Lions Fire.

Div. G Fire continues to move to the NE towards Kern Peak and Overlook Peak. On the eastern flank the fire is slowly backing towards the Kern. Where the fire crosses the Kern River on the east, expect slope reversal runs where wind and terrain align.

Div. X Down canyon winds after 2100 to move the fire towards the Forks of the Kern confluence. 2017 Schaeffer fire is slowing spread rates but the southwest side has more fuel to make small terrain driven runs.

Div. Y/Z Periods of morning terrain influenced SE flow offer opportunities for slope/wind/aspect aligned runs towards values at risk west of the fire. Increased fire behavior expected with the low humidity's and poor recovery.

Shotgun Fire: Fire has a large rock component to the north and east. To the southwest is the 2011 Lion Fire and the Southeast is the 2017 Lion Fire. While heat is still detected there has been no significant fire growth.

AIR OPERATIONS

Smoke should lift between 1000-1100 to support air missions.

SAFETY

Maintain situational awareness of the complex terrain features that will influence fire spread direction. This may be different than general afternoon wind flow from the SW.



Health & Safety Message

Incident: SQF Complex CA-SQF-002622	Date/Op Period: Day/Night Shift 0600-0600 08/29-30/ 2020
---	---

RISKS & HAZARDS

Remember the Fundamentals! : The Ten Standard Fire Orders and the 18 Watchout Situations came about from some tough lessons learned. Use these as a guide to good decision making and sound risk analysis of your work assignments. Evaluate all you tasks within the framework of the Risk Management process outlined in your IRPG.

Fire Weather & Behavior: Continue to monitor weather trends in the daily forecast. Sling hourly weather when out on the line and broadcast that information for all to hear. Watch for increased fire activity at the height of the burning period, especially the unexpected sleeper that suddenly comes to life. Know the extreme fire behavior thresholds that are documented for the area you're working in. Review the fire behavior forecast in the IAP and validate predictions through the course of the operational period.

Fire Camp Safety: We usually don't think of Fire Camp as a dangerous place but camp has a few hazards to look out for:

- Trip hazards such as stairs, tent stakes, cables and wires are abundant.
- Vehicle traffic in and around parking areas and driving through camp.
- Electrical shock from all the power cords and power strips plugged in our tents, kitchen area, hand wash stations and shower unit.
- Wildlife and insects.
- Walking and talking or texting on our cell phones.
- Sharp objects such as scissors, tacks, saws and nails.
- Adverse weather; to name just a few Fire Camp Watch Outs.
- Hazard trees and widow makers: Watch where you pitch your tent.
So pay attention to your surroundings and avoid distractions!

BE COVID 19 SMART!

Prepared By: Paul Tompkins SOFR2 John Nickey SOFR2	Reviewed By: DPIC/IC
--	-----------------------------

L. Lookouts C. Communications E. Escape Routes S. Safety Zones
BE MINDFUL

ASSIGNMENT LIST (ICS 204 WF)

CONTROLLED UNCLASSIFIED
INFORMATION//BASIC

1. Incident Name:	2. Operational Period:	3. Branch	Division
SQF COMPLEX	Date From: 08/29/20 Date To: 08/30/20 Time From: 0600 Time To: 0600		A

4. Operations Personnel:		Page 1 of 1	Alpha
Operations Section Chief: Jim Snow, John Owings (T)	Night Ops: Mark Brown		
Branch Director:	Branch Safety:		
Division/Group Supervisor: Ken VanWig, Chris Ware (T)	Air Attack:		


5. Resources Assigned:	** Resources in BOLD are 24-hour **						
Resource Identifier	ALS	LWD	Leader	Personnel	Request #	Hours	Reporting Location
WFM WHISKEY FLATS		8/29	TRAVIS CLENDENEN	9	O-101	0600-1800	Whitsett Base
HC2 SCORPIONS - 3		9/8	DILEEP BOBBA	22	C-13	0600-1800	Whitsett Base
WT2 PVT K&B		9/7	MIKE MORGAN	1	E-48	0600-1800	Whitsett Base
DO22 PVT SHANNON BROS 44		9/7	BILL SHANNON	1	E-44	0600-1800	Whitsett Base
DO22 PVT SHANNON BROS 45		9/7	JOHN SHANNON	1	E-45	0600-1800	Whitsett Base
FALM TIMBERSMITH SMITH		9/9	KEENAN SMITH	2	O-176	0600-1800	Whitsett Base
FALM TIMBERSMITH DENIZ		9/9	RYAN DENIZ	2	O-177	0600-1800	Whitsett Base
HEQB CROW		8/29	KYLE CROW	1	O-117	0600-1800	Whitsett Base
SOFR MARTIN		8/30	MATTHEW MARTIN	1	O-103	0600-1800	Whitsett Base
SOFR KLEWOWICZ		9/9	ERIC KLEWOWICZ	1	O-171	0600-1800	Whitsett Base
FEMP DAUNIS		9/4	SHANE DAUNIS	1	O-198	0600-1800	Whitsett Base
FEMT BUSBY		9/4	KYLE BUSBY	1	O-210	0600-1800	Whitsett Base
REAF WINGATE		9/6	ERNEST WINGATE	1	O-50	0600-1800	Whitsett Base

6. Work Assignments:
 TASK: Construct dozer & handline between Summit Trailhead & Jerky Meadow utilizing existing road & trail system onto the 20S64 road system. Construct direct handline where appropriate. Crews be prepared to spike.
 PURPOSE: Keep the fire spread East of Lloyd Meadow Rd and South of Angora Peak
 END STATE: Limit fire spread into additional values at risk to protect communities and infrastructure

7. Special Instructions:
 Use caution when driving on roadways and on the fire line. Be aware of wildlife in the fire area and use caution when encountered.
 Coordinate with Power Company for utility concerns. Backhaul excess equipment and trash.
 Monitor command, air to ground, and respective tactical frequencies. Identify potential Drop Point locations.
 Follow all COVID protocols and precautions, stay safe cover your face and maintain your space.
 Be prepared and supplied to spike in the wilderness
 Castle Ambulance 1 available from Whitsett Base Camp. Castle Ambulance 2 available from R Ranch Spike Camp.

8. Communications							
Name	Ch	Function	Rx Freq	Rx Tone	Tx Freq	Tx Tone	Notes
REFER TO 205 FOR COMMAND	0						
NIFC T1	5	TACTICAL	168.0500N	T14 - 151.4	168.0500N	T14 - 151.4	
AIR-GROUND TAC	13	A/G TAC	172.3500N		172.3500N		
CALCORD	15	MEDICAL	156.0750N	T6 - 156.7	156.0750N	T6 - 156.7	MEDICAL EVAC
AIRGUARD	16	EMERGENCY	168.6250N		168.6250N	T1 - 110.9	EMERGENCY ONLY

9. Prepared by: Name: Josh Clark, Kris McDonald (T), Michael Yeun (T) RESL

Signature: 

ICS 204 Date/Time: 8/28/2020 2200 Personnel Count: 44

ASSIGNMENT LIST (ICS 204 WF)

CONTROLLED UNCLASSIFIED
INFORMATION/BASIC

1. Incident Name:	2. Operational Period:	3. Branch	Division
SQF COMPLEX	Date From: 08/29/20 Date To: 08/30/20 Time From: 0600 Time To: 0600		Y

4. Operations Personnel:		Page 1 of 1	Yankee
Operations Section Chief: Jim Snow, John Owings (T)	Night Ops: Mark Brown		
Branch Director:	Branch Safety:		
Division/Group Supervisor: Robb Noxon	Air Attack:		


5. Resources Assigned:		** Resources in BOLD are 24-hour **					
Resource Identifier	ALS	LWD	Leader	Personnel	Request #	Hours	Reporting Location
IHC DALTON		9/11	SCOTT GORMAN	19	C-53	0600-1800	R Ranch Spike
IHC						0600-1800	R Ranch Spike
HC2IA BLACK EAGLES - 5		9/4	REYES BEDOLLA	21	C-3	0600-1800	R Ranch Spike
HC2 BLACK EAGLES - 6		8/31	SCOTT JONES	22	C-4	0600-1800	R Ranch Spike
HC2 COBRAS - 6		9/3	WALTER MEDIM	20	C-6	0600-1800	R Ranch Spike
WFM CALAVARAS		8/31	SETH GREENE	10	O-100	0600-1800	R Ranch Spike
WFM GROVELAND		9/9	TIMOTHY MARKIN	8	O-186	0600-1800	R Ranch Spike
WT2 PVT VALLEY FARM		9/8	JEFF BATES	1	E-88	0600-1800	R Ranch Spike
DOZ2 STF 51		9/7	MIKE NOTT	2	E-118	0600-1800	R Ranch Spike
DOZ PVT - MUTH EQUIP		9/6	DANNY LEWIS	3	E-5	0600-0600	R Ranch Spike
DOZ2 PVT CONNER		9/8	TIM CONNER	1	E-83	0600-1800	R Ranch Spike
FALM TREE GUYS		9/9	CHASE BISHOP	2	O-178	0600-1800	R Ranch Spike
SOFR WORK		9/8	MICHAEL WORK	1	O-28	0600-1800	R Ranch Spike
FEMP ABBRUZZESE		9/6	ROBERT ABBRUZZESE	1	O-90	0600-1800	R Ranch Spike
FEMP COPEMAN		9/6	ROYCE COPEMAN	1	O-91	0600-1800	R Ranch Spike
READ HASTY		9/6	JAYMEE HASTY	1	O-40	0600-1800	R Ranch Spike

6. Work Assignments:
 TASK: Construct direct line into the Kern Canyon following fire's edge from the Div Z / Div Y break to the river's edge. Work to contain fire spread to the West between the dozer line & the Kern River.
 PURPOSE: Limit fire spread to the South and Eastern edge of the fire.
 END STATE: Limit fire spread in the area of Forks Of The Kern & the West side of the river.

7. Special Instructions:
 Use caution when driving on roadways and on the fire line. Be aware of wildlife in the fire area and use caution when encountered.
 Coordinate with Power Company for utility concerns. Backhaul excess equipment and trash.
 Monitor command, air to ground, and respective tactical frequencies. Identify potential Drop Point locations.
 Follow all COVID protocols and precautions, stay safe cover your face and maintain your space.
 Castle Ambulance 1 available from Whitsett Base Camp. Castle Ambulance 2 available from R Ranch Spike Camp.

8. Communications							
Name	Ch	Function	Rx Freq	Rx Tone	Tx Freq	Tx Tone	Notes
REFER TO 205 FOR COMMAND	0						
NIFC T6	8	TACTICAL	166.7750N	T14 - 151.4	166.7750N	T14 - 151.4	
AIR-GROUND TAC	13	A/G TAC	172.3500N		172.3500N		
CALCORD	15	MEDICAL	156.0750N	T6 - 156.7	156.0750N	T6 - 156.7	MEDICAL EVAC
AIRGUARD	16	EMERGENCY	168.6250N		168.6250N	T1 - 110.9	EMERGENCY ONLY

9. Prepared by: Name: Josh Clark, Kris McDonald (T), Michael Yeun (T) RESL

Signature: 

ICS 204 Date/Time: 8/28/2020 2200 Personnel Count: 113

ASSIGNMENT LIST (ICS 204 WF)

CONTROLLED UNCLASSIFIED
INFORMATION/BASIC

1. Incident Name:	2. Operational Period:				3. Branch	Division
SQF COMPLEX	Date From:	08/29/20	Date To:	08/30/20		Z
	Time From:	0600	Time To:	0600		

4. Operations Personnel:					Page 1 of 1	Zulu
Operations Section Chief: Jim Snow, John Owings (T)			Night Ops: Mark Brown			
Branch Director:			Branch Safety:			
Division/Group Supervisor: Chris St Pierre			Air Attack:			

5. Resources Assigned:		** Resources in BOLD are 24-hour **					
Resource Identifier	ALS	LWD	Leader	Personnel	Request #	Hours	Reporting Location
HC2IA BLACK EAGLES - 2		9/3	GUSTAVO SANTOYO	22	C-2	0600-1800	Whitsett Base
WFM HORSESHOE		9/3	CANDICE KUTROSKY	13	O-1	0600-1800	Whitsett Base
ENG3 STF-314		9/8	RON PLUMMER	5	E-60	0600-1800	Whitsett Base
SOFR PILOTTO		9/8	JEFFREY PILOTTO	1	O-27	0600-1800	Whitsett Base
FEMP SWENSON		9/7	BRYAN SWENSON	1	O-92	0600-1800	Whitsett Base
FEMP FISCHER		9/10	SILAS FISCHER	1	O-233	0600-1800	Whitsett Base
REAF RIOS		9/8	MARCOS RIOS	1	O-141	0600-1800	Whitsett Base

6. Work Assignments:
 TASK: Construct direct line from the Div Z / Div A break along the Castle Mtn ridge. Crews to be prepared to spike.
 PURPOSE: Protect values at risk through structure defense and line construction measures.
 END STATE: Limit fire spread to values at risk on the southwest corner of the fire.

7. Special Instructions:
 Use caution when driving on roadways and on the fire line. Be aware of wildlife in the fire area and use caution when encountered.
 Coordinate with Power Company for utility concerns. Backhaul excess equipment and trash.
 Monitor command, air to ground, and respective tactical frequencies. Identify potential Drop Point locations.
 Follow all COVID protocols and precautions, stay safe cover your face and maintain your space.
 Castle Ambulance 1 available from Whitsett Base Camp. Castle Ambulance 2 available from R Ranch Spike Camp.

8. Communications							
Name	Ch	Function	Rx Freq	Rx Tone	Tx Freq	Tx Tone	Notes
REFER TO 205 FOR COMMAND	0						
NIFC T7	9	TACTICAL	168.2500N	T14 - 151.4	168.2500N	T14 - 151.4	
AIR-GROUND TAC	13	A/G TAC	172.3500N		172.3500N		
CALCORD	15	MEDICAL	156.0750N	T6 - 156.7	156.0750N	T6 - 156.7	MEDICAL EVAC
AIRGUARD	16	EMERGENCY	168.6250N		168.6250N	T1 - 110.9	EMERGENCY ONLY

9. Prepared by: Name:	Josh Clark, Kris McDonald (T), Michael Yeun (T)	RESL	Signature:
ICS 204	Date/Time: 8/28/2020	2200	Personnel Count: 44

ASSIGNMENT LIST (ICS 204 WF)

CONTROLLED UNCLASSIFIED
INFORMATION//BASIC

1. Incident Name:	2. Operational Period:	3. Branch	Division
SQF COMPLEX	Date From: 08/29/20 Date To: 08/30/20 Time From: 0600 Time To: 0600		INYO PACK STRING

Page 1 of 1

4. Operations Personnel:	
Operations Section Chief: Jim Snow, John Owings (T)	Night Ops: Mark Brown
Branch Director:	Branch Safety:
Division/Group Supervisor: Lee Roesser, Packer	Air Attack:

5. Resources Assigned:		** Resources in BOLD are 24-hour **					
Resource Identifier	ALS	LWD	Leader	Personnel	Request #	Hours	Reporting Location
INYO PACK STRING		9/7	LEE ROESSER	3	O-142	0600-1800	Clicks Cr Trailhead

6. Work Assignments:
 TASK: Support operations with logistics support needs on the trail systems in the Golden Trout Wilderness.
 PURPOSE: Support operations with logistics needs in the event air operations is unable to provide required needs.
 END STATE: Operations personnel have material to perform suppression activities.

7. Special Instructions:
 Use caution when driving on roadways and on the fire line. Be aware of wildlife in the fire area and use caution when encountered.
 Coordinate with Power Company for utility concerns. Backhaul excess equipment and trash.
 Monitor command, air to ground, and respective tactical frequencies. Identify potential Drop Point locations.
 Follow all COVID protocols and precautions, stay safe cover your face and maintain your space.
 Contact logistics for supply replacement needs for stock.
 Castle Ambulance 1 available from Whitsett Base Camp. Castle Ambulance 2 available from R Ranch Spike Camp.

8. Communications							
Name	Ch	Function	Rx Freq	Rx Tone	Tx Freq	Tx Tone	Notes
REFER TO 205 FOR COMMAND	0						
TBD	0	TBD					TBD
AIR-GROUND TAC	13	A/G TAC	172.3500N		172.3500N		
CALCORD	15	MEDICAL	156.0750N	T6 - 156.7	156.0750N	T6 - 156.7	MEDICAL EVAC
AIRGUARD	16	EMERGENCY	168.6250N		168.6250N	T1 - 110.9	EMERGENCY ONLY

9. Prepared by: Name:	Josh Clark, Kris McDonald (T), Michael Yeun (T)	RESL	Signature:
------------------------------	--	------	------------

ICS 204	Date/Time: 8/28/2020 2200	Personnel Count: 3
---------	---------------------------	--------------------

ASSIGNMENT LIST (ICS 204 WF)

CONTROLLED UNCLASSIFIED
INFORMATION/BASIC

1. Incident Name:	2. Operational Period:	3. Branch	Division
SQF COMPLEX	Date From: 08/29/20 Date To: 08/30/20 Time From: 0600 Time To: 0600		NIGHT

4. Operations Personnel:		Page 1 of 1
Operations Section Chief: Jim Snow, John Owings (T)	Night Ops: Mark Brown	
Branch Director:	Branch Safety:	
Division/Group Supervisor: Mark Brown	Air Attack:	

5. Resources Assigned:		** Resources in BOLD are 24-hour **					
Resource Identifier	ALS	LWD	Leader	Personnel	Request #	Hours	Reporting Location
WFM SLATE MTN		9/5	ANGEL REYES	10	O-4	1800-0800	Whitsett Base
ENG6 E696		9/9	WILLIAM MCDARMENT	3	E-72	1800-0600	Whitsett Base
ENG6 BLUE SKY E8		9/10	ALEX PARKER	3	E-63	0600-1800	Whitsett Base
WT2 ANF 237		9/10	FRANCISCO CARRILLO	2	E-113	0600-1800	Whitsett Base

6. Work Assignments:
 TASK: Patrol and monitor accessible fire area to protect values at risk
 PURPOSE: Limit fire spread to additional values at risk
 END STATE: Fire spread limited to existing fire perimeter

7. Special Instructions:
 Use caution when driving on roadways and on the fire line. Be aware of wildlife in the fire area and use caution when encountered.
 Coordinate with Power Company for utility concerns. Backhaul excess equipment and trash.
 Monitor command, air to ground, and respective tactical frequencies. Identify potential Drop Point locations.
 Follow all COVID protocols and precautions, stay safe cover your face and maintain your space.
 Castle Ambulance 1 available from Whitsett Base Camp. Castle Ambulance 2 available from R Ranch Spike Camp.

Name	Ch	Function	Rx Freq	Rx Tone	Tx Freq	Tx Tone	Notes
REFER TO 205 FOR COMMAND	0						
NIFC T1	5	TACTICAL	168.0500N	T14 - 151.4	168.0500N	T14 - 151.4	
AIR-GROUND TAC	13	A/G TAC	172.3500N		172.3500N		
CALCORD	15	MEDICAL	156.0750N	T6 - 156.7	156.0750N	T6 - 156.7	MEDICAL EVAC
AIRGUARD	16	EMERGENCY	168.6250N		168.6250N	T1 - 110.9	EMERGENCY ONLY

9. Prepared by: Name:	Josh Clark, Kris McDonald (T), Michael Yeun (T)	RESL	Signature:
ICS 204	Date/Time: 8/28/2020 2200		Personnel Count: 18

AIR OPERATIONS SUMMARY

PREPARED BY: JoAnn Overacker

PREPARED DATE/TIME- 8/28/20 20:00

1. INCIDENT NAME: SOF COMPLEX		2. OPERATIONAL PERIOD DATE: 8/29/2020		START TIME: 0800		END TIME: 2000		SUNRISE: 0625		SUNSET: 1930			
3. REMARKS (Safety Notes, Hazards, Air Operations Special Equipment,, etc.):													
SOF COMPLEX ROTOR WATER RESTRICTION. New TFR at 0600, check foreflight for update (Dip Site Comingling Matrix)													
A to A YES B to B YES A TO B B TO A NO													
4. MEDEVAC A/C:			5. TFR: 017509			Radius: 8 NM							
H-408 Hoist/ALS at Keen 24/7			Altitude: 11,000 = MSL			Center Point							
Back up H-552 at Sequoia Kings N.P			Long: 118 24.00			(TFR VICTOR 123.725)							
6. PERSONNEL		Phone	7. FREQUENCIES		AM	FM	8. FIXED-WING						
AOBD: JoAnn Overacker		209-559-1617	AIR/AIR	AIR/AIR Rotor	123.725	165.9875	Airtankers						
ATGS:			A/G RTW	TAC			Order as needed						
ASGS: Daniel Sepulveda		909-374-8944	A/G RTW	CMD	172.3500		Order as needed						
HEBM - PTV Jesse Rodriguez		909-253-4442	A/G RTW	CMD	169.1500		Base FAX #:						
HEBM (T)- PTV Darren Stanford		909-702-8344	CALCORD	Medivacs	156.0750		ATGS Aircraft						
HEBM - Peppermint Matt Quezada		559-542-2301	DECK FREQ:		163.100		7TT, Relief AA TBA						
ATB: Raul Contreas		559-789-0191	TOLC FREQ:	123.975			Other						
9. HELICOPTERS (Use Additional Sheets As Necessary)													
FAA N#	TY	MAKE/MODEL	BASE	AVAIL	START	REMARKS	FAA N#	TY	MAKE/MODEL	BASE	AVAIL	START	REMARKS
1CG	I	S-61	ATB	0800	0830	A-8	H-523	II	205++	Peppermint	0800	0830	A-11
8CH	I	Chinook 48D	ATB	0800	0830	A31	H 520	II	205++	Peppermint			ETA to incident 1200
9RH	I	Kmax	ATB	0800	0830	A32	H-535	III	Bell 407	ATB	0800	0830	A39
5CH	1	Chinook 48D	ATB	0800	0830	A-53							
5BH	1	S-70	ATB	0800	0830	A-76							
MISSION: 8/28													
1. Sling Cargo/Shuttle from Peppermint													
2. IC Recon at 1000 for Operations (2) from Peppermint													
3. IC/OPS/DV and other as Requested													
DIPSITE NAME:		LAT/LONG:		DIPSITE NAME:		LAT/LONG:							
Confluence Dip All Types		36* 07.72 X 118* 26.34 B		(No Restrictions) Lake Dip - Type I		36* 18.44 x 118* 24.25							
Round Dip - Type I		36* 12.90 x 118* 28.150 B											
Bridge Dip - Type II		36* 12.05 x 118* 27.44 B											

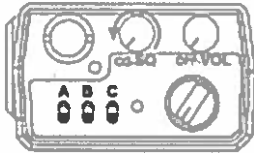
INCIDENT RADIO COMMUNICATIONS PLAN		Incident Name		SQF Complex		Date/Time Prepared		Operational Period Date/Time	
COMMUNICATIONS PLAN		SQF Complex		08/28/20 1800		08/29/20-08/30/20 0600-0600			
Zn / Ch	Function	Channel Name/Trunked Talkgroup	Assignment	RX Freq	RX Tone/NAC	TX Freq	TX Tone/NAC	Mode A, D, M	Remarks
1	Command	NIFC C4	All Divisions	170.0000	151.4	166.6750	151.4	A	Jordan Peak
2	Command	NIFC C11	All Divisions	170.6875	151.4	166.5750	151.4	A	Sherman Peak
3	Command	NIFC C31	All Divisions	172.5500	151.4	162.1875	151.4	A	Coyote Peak
4	Dispatch	SQF CH2	All Divisions	169.9000	0.0	165.7000	103.5	A	Back up Net. Monitored in Castle Comm
5	Tactical	NIFC T1	DIV A/Night	168.0500	151.4	168.0500	151.4	A	
6	Tactical	NIFC T3	DIV B/C/G	168.6000	151.4	168.6000	151.4	A	
7	Tactical	NIFC T5	DIV X	166.7250	151.4	166.7250	151.4	A	
8	Tactical	NIFC T6	DIV Y	166.7750	151.4	166.7750	151.4	A	
9	Tactical	NIFC T7	DIV Z	168.2500	151.4	168.2500	151.4	A	
10	Tactical	R5 T5	Unassigned	167.1125	151.4	167.1125	151.4	A	
11	Tactical	R5 T6	Unassigned	168.2375	151.4	168.2375	151.4	A	
12	Tactical	VFIRE 25	Ponderosa, Lloyd SDG	154.2875	156.7	154.2875	156.7	A	Structure Defense Group
13	Air - Ground Tac	A/G TAC	All Divisions	172.3500	0.0	172.3500	0.0	A	
14	Air - Ground CMD	A/G CMD	All Divisions	169.1500	0.0	169.1500	0.0	A	Overhead Only
15/19	Tactical	CALCORD		156.0750	156.7	156.0750	156.7	A	T6 - Medical Evac
16/20	Emergency only	GUARD	All Divisions	168.6250	0.0	168.6250	110.9	A	T1 - AIR GUARD - emerg. use only
Prepared By (Communications Unit Leader)		Mike Greene		Communications (925) 588-6879		Incident Location		Latitude, Longitude	
Deviation is assumed to be narrow band unless otherwise noted in the remarks. Mode refers to either "A" (analog), "D" (digital) or "M" (mixed mode). 1/14/14 v.5									

Using your radio with preprogrammed tones

NIFC requires all frequencies used on incidents to be tone guarded on the Receive and Transmit Side. To make radio use as intuitive as possible we have programmed the correct transmit and receive tones on all frequencies in the incident clone.

There are a few things to remember to make this work properly:

1. **YOU DO NOT NEED TO SELECT TONES ON THE KEYPAD.**
2. Pressing the number zero key will allow the radio to use the preprogrammed tone frequencies.
3. If you are using the old "brick" style radios (dph, gph) your radio squelch knob needs to be turned all the way counterclockwise into the Channel Guard or CG position like in the picture below. There is no change needed for any KNG model radios.



REMEMBER- If you are unsure about your current tone selection just press zero, this will have the correct tone for every channel. You can lock your keypad by holding the function or FCN button, this will help prevent accidental keypresses or tone changes.

Using a linked NIFC repeater system

Our current repeater configuration is known as a "linked" system. Here are a few reminders on the correct use of a linked repeater network.

1. When selecting a command repeater to talk on, use the one that gives you the clearest kick back (squelch tail, kerchunk).
2. **THERE IS NO NEED TO ANNOUNCE THE SPECIFIC COMMAND NUMBER YOU ARE USING.** In a linked system each repeater will retransmit any traffic from all other repeaters in the network.

Please take time to familiarize yourself with your radio's functions and capabilities. If you have any questions, contact communications at 925-588-6879.

MEDICAL PLAN (ICS 206 WF) CIIMT 12

1. Incident Name		2. Operational Period						
SQF COMPLEX		Date/Time: 08/29/2020-8/30/2020 24 hours (0600-0600)						
3. EMS / Ground Ambulance Services/ Aid Stations								
Name	Location	Frequency/Phone		Advanced Life Support (ALS)				
IMPERIAL AMBULANCE	35659 CA-190 SPRINGVILLE, CA	DISP:559-733-6544		YES				
INCIDENT DEDICATED IMPERIAL AMBULANCE	WHITSETT BASE CAMP	CASTLE AMB 1 ON CMD		YES				
INCIDENT DEDICATED IMPERIAL AMBULANCE	R RANCH SPIKE CAMP	CASTLE AMB 2 ON CMD		YES				
ICP AID STATION	PORTERVILLE FAIRGROUNDS ICP	MEDL: 805-813-3858		NO				
WHITSETT AID STATION	WHITSETT BASE CAMP	MEDL: 661-510-6117		NO				
AFS MEDICAL TRAILER	WHITSETT BASE CAMP	MEDL: 707-364-9259		YES				
4. Air Rescue / Air Ambulance Services								
Name	Phone	Type of Aircraft & Capability						
KERN COUNTY FD H408	CASTLE COMM ON CMD	INCIDENT PRIMARY AIR RESCUE, ALS, 24/7 HOIST						
SEQUOIA KINGS CANYON NATIONAL PARKS H552	CASTLE COMM ON CMD	SHORT HAUL ONLY, NO MEDICAL OR HOIST						
SKYLIFE	DISPATCH:800-305-5433	Air Ambulance/Rescue - ALS, NO HOIST LZ NEEDS TO BE 100X100						
CHP H40 (FRESNO)	DISPATCH:559-262-0400 1HR FLIGHT TIME RESPONSE	Air Ambulance/Rescue, ALS 24/7, DAY HOIST ONLY STAFFING ON CALL AFTER 1800						
US COAST GUARD	REGIONAL COMMAND CENTER 510-437-3701	AIR RESCUE, HOIST 24/7 ALS/BLS TO BE CONFIRMED DAILY						
5. Hospitals (all times estimated from incident location)								
Name & Level	GPS Datum – WGS 84 Degrees Decimal Minutes		Travel Time Air Gnd		Phone	Helipad Yes No	Address	
KAWEAH DELTA HEALTH CARE DISTRICT LEVEL 2 TRAUMA	Lat:	36° 19.65' N		30min	2.5hr	559-624-2000	X	400 W. Mineral King Ave. Visalla, CA 93291
	Long:	119° 17.676' W						
KERN MEDICAL CENTER LEVEL 2 TRAUMA	Lat:	35° 22.95' N		45min	3hr	661-333-5194	X	1700 MT Vernon Ave. Bakersfield, CA 93306
	Long:	118° 58.182' W						
COMMUNITY REGIONAL MEDICAL CENTER LEVEL 1 TRAUMA BURN CENTER	Lat:	36° 44.568' N		1hr	3hr	559-459-6000 ER:559-459-4220	X	2823 Fresno St. Fresno, CA 93721
	Long:	119° 47.094' W						
6. Division / Crew Emergency Pre-Plan						<i>Update and discuss with assigned resources daily.</i>		
Fireline EMT / Medic's Division / Branch Location								
Air Hoist site location site: Lat: / Long: / Elevation:								
Helispot: Lat: / Long: / Elevation:								
7. Prepared By (Medical Unit Leader)		8. Date/Time		9. Reviewed By (Safety Officer)		10. Date/Time		
MEDL Matt Menard 707-364-9259 MEDL (t) Brandon Bennewate 805-813-3858 MEDL (t) Kevin Elledge 661-510-6117		8/28/2020 1800 <i>Brandon Bennewate</i>		SOF2 John Nickey 530-310-3537 SOF2 Paul Tompkins 619-889-7533		8/28/2020 1800 <i>Paul Tompkins</i>		

MEDICAL PLAN (ICS 206 WF) CIIMT 12

Medical Incident Report					
FOR A NON-EMERGENCY INCIDENT, WORK THROUGH CHAIN OF COMMAND TO REPORT AND TRANSPORT INJURED PERSONNEL AS NECESSARY.					
FOR A MEDICAL EMERGENCY: IDENTIFY ON SCENE INCIDENT COMMANDER BY NAME AND POSITION AND ANNOUNCE "MEDICAL EMERGENCY" TO INITIATE RESPONSE FROM IMT COMMUNICATIONS/DISPATCH.					
Use the following items to communicate situation to communications/dispatch.					
1. CONTACT COMMUNICATIONS / DISPATCH (Verify correct frequency prior to starting report) <i>Ex: "Communications, Div. Alpha Stand-by for Emergency Traffic."</i>					
2. INCIDENT STATUS: Provide incident summary (including number of patients) and command structure. <i>Ex: "Communications, I have a Red priority patient, unconscious, struck by a falling tree. Requesting air ambulance to Forest Road 1 at (Lat./Long.) This will be the Trout Meadow Medical, IC is TFLD Jones. EMT Smith is providing medical care."</i>					
Severity of Emergency / Transport Priority	<input type="checkbox"/> RED / PRIORITY 1 Life or limb threatening injury or illness. Evacuation need is IMMEDIATE <i>Ex: Unconscious, difficulty breathing, bleeding severely, 2° – 3° burns more than 4 palm sizes, heat stroke, disoriented.</i>				
<input type="checkbox"/> YELLOW / PRIORITY 2 Serious injury or illness. Evacuation may be DELAYED if necessary. <i>Ex: Significant trauma, unable to walk, 2° – 3° burns not more than 1-3 palm sizes.</i>					
<input type="checkbox"/> GREEN / PRIORITY 3 Minor injury or illness. Non-Emergency transport <i>Ex: Sprains, strains, minor heat-related illness.</i>					
Nature of Injury or Illness Mechanism of Injury			Brief Summary of Injury or Illness <i>(Ex: Unconscious, Struck by Falling Tree)</i>		
Transport Request			Air Ambulance / Short Haul/Hoist Ground Ambulance / Other		
Patient Location			Descriptive Location & Lat. / Long. (WGS84)		
Incident Name			Geographic Name + "Medical" <i>(Ex: Trout Meadow Medical)</i>		
On-Scene Incident Commander			Name of on-scene IC of Incident within an Incident <i>(Ex: TFLD Jones)</i>		
Patient Care			Name of Care Provider <i>(Ex: EMT Smith)</i>		
3. INITIAL PATIENT ASSESSMENT: Complete this section for each patient as applicable (start with the most severe patient)					
Patient Assessment: See IRPG PAGE 106					
Treatment:					
4. TRANSPORT PLAN:					
Evacuation Location (if different): (Descriptive Location (drop point, intersection, etc.) or Lat. / Long.) Patient's ETA to Evacuation Location:					
Hellspot / Extraction Site Size and Hazards:					
5. ADDITIONAL RESOURCES / EQUIPMENT NEEDS:					
<i>Example: Paramedic/EMT, Crews, Immobilization Devices, AED, Oxygen, Trauma Bag, IV/Fluid(s), Splints, Rope rescue, Wheeled litter, HAZMAT, Extraction</i>					
6. COMMUNICATIONS: Identify State Air/Ground EMS Frequencies and Hospital Contacts as applicable					
Function	Channel Name/Number	Receive (RX)	Tone/NAC *	Transmit (TX)	Tone/NAC *
COMMAND					
AIR-TO-GRND					
TACTICAL					
7. CONTINGENCY: Considerations: If primary options fail, what actions can be implemented in conjunction with primary evacuation method? Be thinking ahead.					
8. ADDITIONAL INFORMATION: Updates/Changes, etc.					
REMEMBER: Confirm ETA's of resources ordered. Act according to your level of training. Be Alert. Keep Calm. Think Clearly. Act Decisively.					



Finance Message

CTRs/Shift Tickets/ and other finance items will be gathered daily at Whitsett and taken to ICP. Please complete CTRs and shift tickets at least every 2 days. Please include your resource number on CTR

Due to Covid-19, Finance staff are working towards minimizing everyone's exposure at incidents. An electronic submission of CTR, Shift ticket, contract, crew manifest, and resource order is encouraged when possible.

Please send the signed documents to the email address below. In the subject line, please put your resource number and the lead's last name.

We accept:

- Photo/image of the traditional hardcopy w/wet signature, or
- PDF w/electronic signature

2020.SQF.Complex@gmail.com



Human Resource Message SQF Complex Saturday, August 29, 2020

HUMAN RESOURCE MESSAGE

Keep Your Head in the Game....And a Level Head

The demands expected of the people assigned to incidents are complex, different, exhausting, and exciting. No matter what our particular assignment to the incident is, there is a common expectation placed on each of us - our readiness to take on the assignment.

To maintain this readiness throughout the incident, we need to continue focusing on the objectives. We must not be distracted by unacceptable conduct that adversely affects personnel and their readiness.



"Get on the field! Let's go! Get your heads in the game!!"

Feel free to call/text if you have questions, concerns, or just want to chat.

Todd Morrow - (HRSP) – (707) 373-0204

SQF COMPLEX TRAINING MESSAGE

08/29/2020

A Training Specialist is now assigned to the incident. Registration for Training as a trainee can be done virtually using the QR code in the IAP. Once you register, I will send you a text and/or email with instructions for closing out your assignment when ready. If you have any training questions or need any evaluation records or forms, please feel free to contact me:

HEATHER GROVE, TNSP- (530) 394-8076 or
heather.e.grove@usda.gov

I am available by phone, text, or email from 0600-2100 daily.

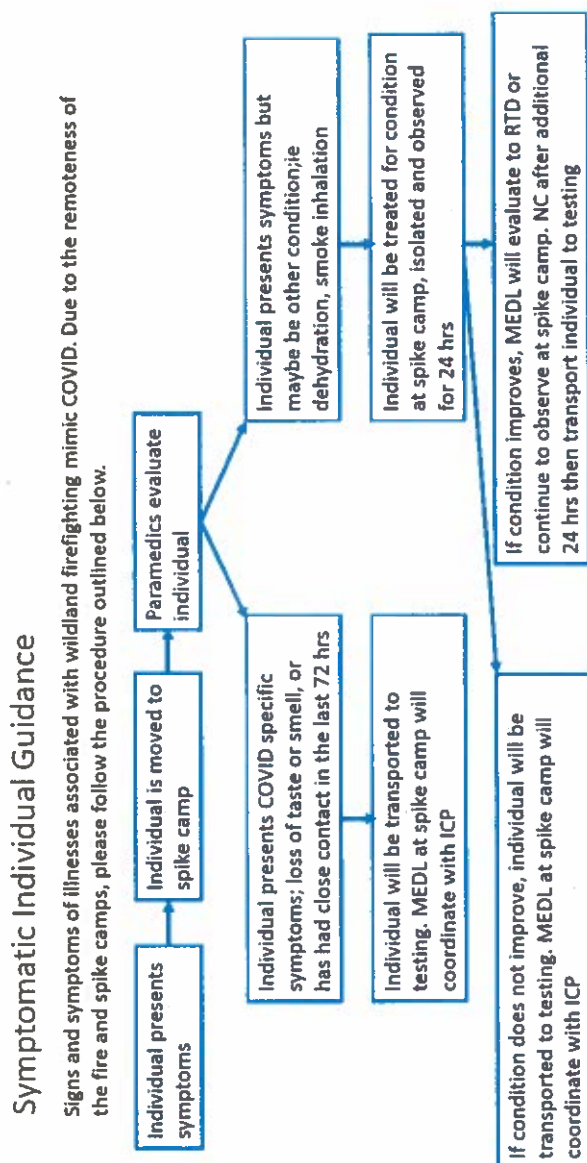
Be safe and have a great trainee assignment!

Symptomatic individual guidance

Signs and symptoms of illnesses associated with wildland firefighting mimic COVID. Due to the remoteness of the fire and spike camps, guidance has been provided on dealing with symptomatic individuals.

A COVID evaluation process has been published as an attachment. Division Chiefs will be responsible for screening resources daily with module supervisors for COVID.

Personnel must wear masks when in camp and social distancing is not possible. Masks will help to limit the spread of COVID virus. A COVID outbreak in camp will shut down the fire suppression efforts, place colleagues at risk, and potentially have personnel pulled off the fire.



Fire and COVID-19 Briefing Checklist

Self-Awareness / Screening

- Notify supervisor if you or others experience:
 - o Cough, more than expected
 - o Difficulty breathing
 - o Loss of taste or smell
 - o Fever
 - o Chills
 - o Sore throat
 - o Muscle pain
- Immediately separate yourself from others.
- Follow crew and division plans to isolate, triage, and transport symptomatic personnel.

Hygiene on the Fireline

- Properly wash or sanitize your hands often
- Avoid handshakes and communal use items
- Inform supervisor of needed resupply.
- Disinfect high touch surfaces often

Social distancing and protective equipment

- Practice social distancing
- Conduct briefings in conversations outdoors and at least SIX feet apart
- Utilize face coverings
- Clean or replace dirty face coverings, equipment, and PPE

Communications

- Ensure effective sender/receiver messaging.
- Protect yourself, your crew, and your camp!

Any questions contact:

MEDL (T) Brandon Bennewate @ (805) 813-3858
MEDL (T) Kevin Elledge @ (661) 510-6117

COVID-19 PLAN	1. INCIDENT NAME SQF COMPLEX	2. DATE PREPARED 08/28/20	3. TIME PREPARED 1800	4. OPERATIONAL PERIOD 08/29/20 - 08/30/20 24HR				
5. INCIDENT MEDICAL AID STATIONS								
MEDICAL AID STATIONS	LOCATION			ISOLATION				
				YES	NO			
ICP MEDL	PORTERVILLE FAIRGROUNDS			X				
WHITSETT BASE CAMP MEDL	CAMP WHITSETT KERNVILLE, CA			X				
AFS MEDICAL TRAILER	CAMP WHITSETT KERNVILLE, CA			X				
6. LOCAL SUPPORT								
A. OFF-SITE ISOLATION FACILITIES								
NAME	LOCATION	PHONE	MEDICAL					
			YES	NO				
MARRIOTT HOTEL	VISALIA, CA	SEE BELOW				X		
VARIOUS: COORDINATE WITH COVID SPECIALIST AND MEDL	ICP/WHITSETT	530-957-6152 805-813-3858	X					
B. PUBLIC HEALTH / IMO								
NAME	LOCATION	TESTING						
		YES	NO					
ANNETTE BURGOS	TULARE COUNTY PUBLIC HEALTH	X						
DENISE ALONZO	PORTERVILLE IMO IC	X						
STEVE HALL	INCIDENT ICP COVID SPECIALIST	X						
7. TESTING FACILITIES								
NAME	ADDRESS	TRAVEL TIME		PHONE	HELIPAD		BURN CENTER	
		AIR	GRND		YES	NO	YES	NO
CENTRAL VALLEY OCC HEALTH	4100 TRUXTON AVE BAKERSFIELD, CA 93309		1HR	661-632-1540		X		X
8. COVID-19 PROCEDURES								
IN-CAMP SCREENINGS				FIELD SCREENINGS				
<ul style="list-style-type: none"> Notify supervisor if you have symptoms (see briefing checklist) 				<ul style="list-style-type: none"> <u>Start of shift</u>: notify your Div. Sup of EMT's/Paramedic's and Medical gear carried by crew 				
<ul style="list-style-type: none"> IMMEDIATELY separate yourself from others 				<ul style="list-style-type: none"> Crew Supervisor contacts Division with Nature of Emergency. 				
Follow plans to isolate , triage, and transport				<ul style="list-style-type: none"> Division Supervisor contact's Communications and declare a medical emergency on command 				
<ul style="list-style-type: none"> Supervisor notifies MEDL 				<ul style="list-style-type: none"> Closest DIVS or designee responds to incident 				
<ul style="list-style-type: none"> MEDL responds to patient location 				<ul style="list-style-type: none"> Closest SOFR/EMT's respond to assist w/care 				
<ul style="list-style-type: none"> MEDL provides for appropriate care 				<ul style="list-style-type: none"> Use attached Injury or Incident Comm. Protocol 				
<ul style="list-style-type: none"> Notifications, transport, and destination will be determined based on patient symptoms 				<ul style="list-style-type: none"> If ambulance (ground or air) delayed designate rendezvous site and move towards it 				
<ul style="list-style-type: none"> Contact tracing for any exposures 				<ul style="list-style-type: none"> Secure scene for investigation—keep a log 				
ICS COVID-19 206	9. PREPARED BY (MEDICAL UNIT LEADER) BRANDON BENNEWATE MEDL(T) <i>BRANDON BENNEWATE</i>			10. REVIEWED BY (SAFETY OFFICER) PAUL TOMPKINS SOF2 <i>PAUL TOMPKINS</i>				



Smoke Outlook for 8/28 - 8/29
Southern Sierra - Sequoia : SQF Complex
 Issued at: 2020-08-28 07:21 PDT

Fire

The SQF Complex is 23,625 acres in size, an increase of 2191 acres. Active fire behavior with backing, flanking, and uphill runs is expected in grass, brush, and timber fuels over a complex wilderness landscape. Reduced available fuels due to previous fires in the area are limiting growth in some areas. For more information visit <https://inciweb.nwccg.gov/incident/7048/>.

Smoke

Improving air quality was measured yesterday in the foothills of the eastern San Joaquin Valley. Generally Moderate conditions will continue again today from Pinehurst to Porterville. The Kern river drainage from the fire south to Kernville and the Kennedy Meadows area east of the fire will again see impaired conditions for most of the day. On the east side, Keeler and Lone Pine will have Unhealthy conditions most of the day.

Notes

This outlook addresses and is based on PM2.5 concentrations due to wildfire smoke only.



Daily AQI Forecast* for Aug 28, 2020

Station	Yesterday	Thu	Forecast*	Fri	Sat
	hourly	8/27		Comment for Today -- Fri, Aug 28	8/28
Pinehurst			Moderate most of the day.		
Sequoia NP			Moderate most of the day.		
Ash Mountain			Moderate most of the day.		
Springville			Moderate most of the day.		
Porterville			Moderate most of the day.		
Johnsondale			Very Unhealthy conditions today		
Kernville			Very Unhealthy conditions today		
Kennedy Meadows			Unhealthy conditions today		
Keeler			Unhealthy conditions today		
Lone Pine			Unhealthy conditions today		
Bishop			Unhealthy of Sensitive Groups today		

Issued 2020-08-28 07:21 PDT by Paul Schlobohm, ARA, pschlobo@gmail.com

Air Quality Index (AQI)	Actions to Protect Yourself
Good	None
Moderate	Unusually sensitive individuals should consider limiting prolonged or heavy exertion.
USG	People within Sensitive Groups* should reduce prolonged or heavy outdoor exertion.
Unhealthy	People within Sensitive Groups* should avoid all physical outdoor activity.
Very Unhealthy	Everyone should avoid prolonged or heavy exertion.
Hazardous	Everyone should avoid any outdoor activity.

***Disclaimer:** This forecast is based on fine particulates only; ozone is not included. Forecasts may be wrong; use at own risk. Use caution as conditions can change quickly. See your health professional as needed. Smoke sensitive groups should take appropriate precautions.

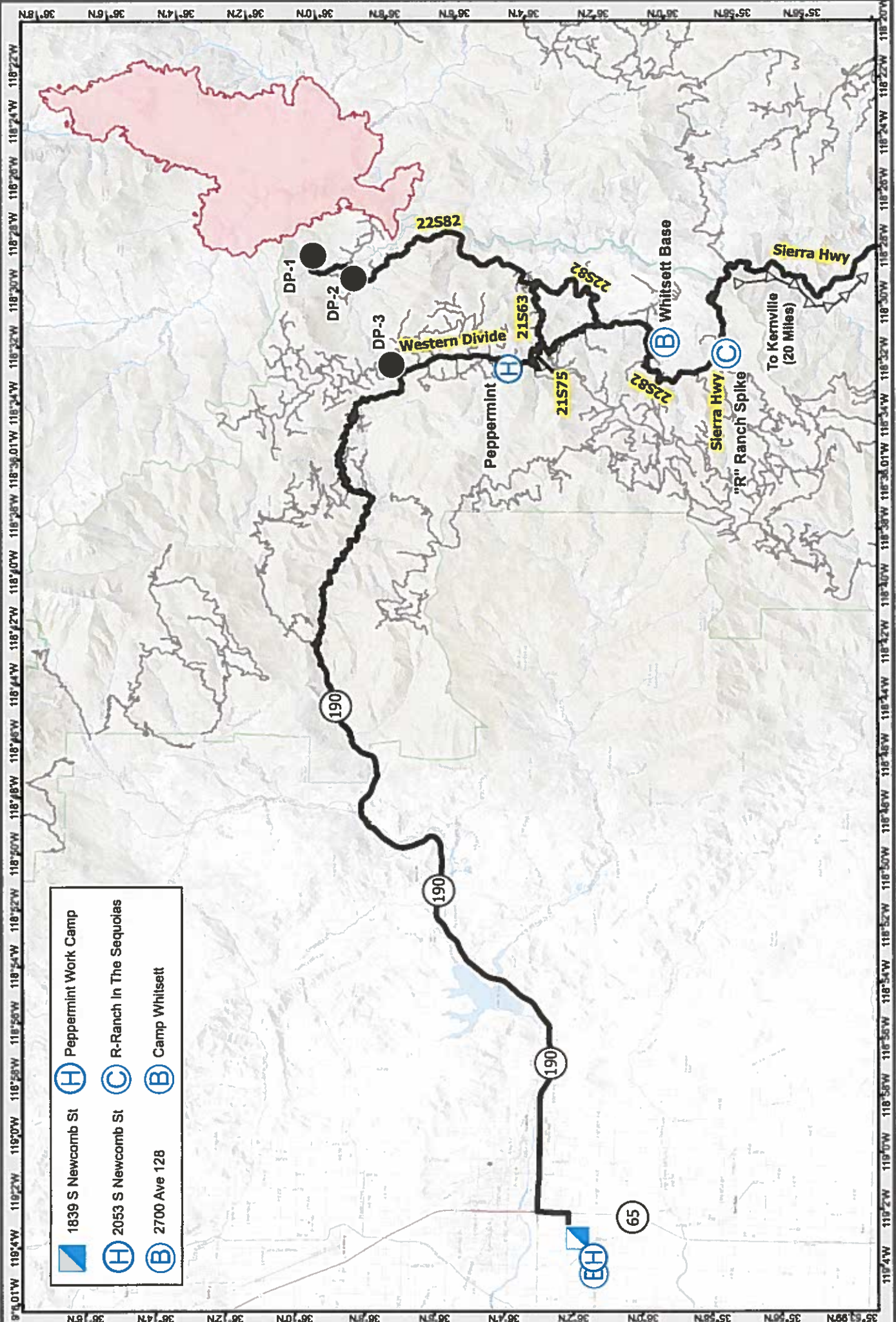
Additional Links


California Smoke Blog -- <http://californiafireinfo.blogspot.com/>
 San Joaquin APCD -- <http://www.valleyair.org>
 Fire and Smoke Map -- <https://fire.airnow.gov/#>

Eastern Kern APCD -- <http://www.kemair.org>
 Great Basin Unified APCD -- <https://www.gbuapcd.org/>



Issued by USFS Wildland Fire Air Quality Response Program -- www.wildlandfiresmoke.net
 Southern Sierra - Sequoia Updates -- tools.airfire.org/outlooks/SouthernSierra-Sequoia
 *Smoke and Health Info -- www.airnow.gov/index.cfm?action=smoke.index



-  1839 S Newcomb St
-  Peppermint Work Camp
-  2053 S Newcomb St
-  R-Ranch In The Sequoias
-  2700 Ave 128
-  Camp Whitsett

TRANSPORTATION
SQF Complex
Aug 29, 2020



-  Incident Base
-  Incident Command Post
-  Camp
-  Drop Point
-  Helibase

Transportation Map
SQF Complex
CA-SQF-002622



TRANSPORTATION
SQF Complex
Aug 29, 2020

