



Scan for:

IAP's

Maps

Check In

DMOB

Finance

OPERATIONAL PERIOD

Friday, September 4, 2020

Saturday, September 5, 2020

0600 to 0600

Values at Risk

Firefighters and Public Safety

Communities

- Ponderosa and Camp Nelson, Pyles Boys Camp, Beck Meadows inholdings and facilities

Infrastructure

- Osa Meadows, USGS seismic station, high recreation areas, campgrounds, trailheads and facilities.

Natural Resources and Cultural Values

- Giant Sequoia Groves, Freeman Grove, Little Kern Golden Trout, Mountain Yellow Legged Frog, and Sierra Nevada Bighorn Sheep Habitats
- Wilderness Values
- Archaeological and Cultural Resources
- Waterways and Riparian Areas

SQF COMPLEX

CA-SQF-002622

P5NG2P (0513)



Incident Action Plan

INCIDENT OBJECTIVES	1. Incident Name SQF COMPLEX	2. Date Prepared 9/3/2020	3. Time Prepared 1800
4. Operational Period			
September 4, 2020 to September 5, 2020		Time: 0600-0600	
5. General Control Objectives for the Incident			
<ul style="list-style-type: none"> • Provide for firefighter and public safety as the highest priority through sound risk management and life first principles. • Limit growth of the Castle Fire by establishing a holding line that is safe for firefighters and offers high probability of success in achieving the following control objectives: Keep the fire north of Durr Wood Camp, south of Sequoia Kings Canyon Wilderness Boundary, east of Highway 190 to Summit Trail, and west of Toowa Range to King Fisher Ridge to 22S05 Road. • Monitor the spread/growth of the Shotgun Fire using air operation assets and determine future needs and suppression actions. • Protect and minimize impacts to identified values at risk including the communities of Ponderosa, Camp Nelson, Pyles Boys Camp, Freeman Giant Sequoia Grove, Osa and Beck Meadows, trailheads and facilities. • Minimize adverse effects from suppression actions on riparian areas, wetlands, Little Kern Golden Trout, Mountain Yellow Legged Frog, and Sierra Nevada Bighorn Sheep habitats. • Minimize impacts to Wilderness areas: Use minimum impact suppression tactics (MIST) by utilizing trails, streams, ridges and natural barriers when possible for control lines. • Minimize, to the extent feasible, smoke exposure to firefighters, communities, and other affected areas to reduce susceptibility to the consequences from COVID-19 exposure. 			
6. Management Objectives			
<ul style="list-style-type: none"> • Implement suppression actions that have a high potential for success, carefully weighing risk exposure to firefighters. • Provide for the safety of firefighters, aviation and public through clear communication. Ensure an understanding of strategies and tactics, including a clearly defined and obtainable end state, in order to facilitate sound risk mitigation decision making. • Natural and Cultural Resource Values at Risk: Weigh potential suppression actions in consideration of wilderness archaeological and cultural resources, waterways and riparian areas and wildlife resources, to minimize fire effects and undesirable suppression related effects to these values. • Maintain and strengthen relationships with partner agencies, stakeholders, cooperators, community leaders, and local agencies utilizing most effective platforms available. • Implement social distancing and adhere to the “module of one” concept to reduce physical exposure and transmission of COVID-19, to provide for the health and safety of all incident personnel. • Effectively manage cost of the incident by planning strategies and tactics toward a high probability of success in meeting incident objectives. • Provide accurate and timely information to agencies, stakeholders, backcountry users, and the public. • Coordinate with the Sequoia NF Duty Officer on support to any new initial attack. 			
7. Commander's Intent			
<ul style="list-style-type: none"> • Safety: Address fire fighter, public, and aviation safety through hazard/exposure mitigation. • Communication: We will keep the Agency Administrators informed of significant accomplishments and issues. • Risk Management: We will use a robust risk assessment process to mitigate unnecessary risk to fire fighters and update and/or revise decisions as necessary. • Human Resources: We will ensure that all incident personnel be treated with dignity and respect. We have a zero tolerance for harassment, alcohol, or illegal drug use. • Operations: We will make informed tactical decisions engaging the fire in the right locations with the appropriate resources. • Public Information: We will provide timely and accurate information through the press, meetings, trap lines, briefings, and social media. • Stakeholders: We will coordinate with the delegating agencies to identify key partners and keep them effectively informed of progress and to use their local knowledge. • Finance: We will establish and monitor cost effective methods for accomplishing incident objectives. 			
8. ATTACHMENTS (X IF ATTACHED)			
<input checked="" type="checkbox"/> Organization List - ICS 203	<input checked="" type="checkbox"/> Medical Plan - ICS 206	<input type="checkbox"/> _____	
<input checked="" type="checkbox"/> Division Assignment Lists - ICS 204	<input checked="" type="checkbox"/> Unit Log 214	<input type="checkbox"/> _____	
	<input checked="" type="checkbox"/> WF206 8 Line	<input type="checkbox"/> _____	
9. Prepared By (Planning Section Chief)		10. Approved By (Incident Commander)	
Rob Carlin PSC1 (t) ICS 202		Michael Goicoechea IC	

ORGANIZATION ASSIGNMENT LIST				Operations Section	
1. Incident Name		SQF Complex		Field Operations	Scott Schrenk, Andy James (t)
2. Date Prepared	9/3/2020	3. Time Prepared	1700	Planning Operations	Brent Olson 406.249.4994, Shawn Borgen (t)
4. Operational Period				Branch I Director	Justin Kaber
September 4, 2020 to September 5, 2020 0600 to 0600				Branch V Director	Ryan Butler / Logan Sanders (t)
Incident Commander and Staff				Structure Branch	Drew Daily
Incident Commander	Mike Goicoechea			Branch I	
Deputy	Mark Goeller, Greg Poncin			Alpha - Bravo	Kate Airhart
Safety Officer	Gerald Vickers 443.614.4358			Charlie	Unstaffed
Information Officer	Jeannette Smith 406.544.7892			Golf	Unstaffed
Liaison Officer	Rob Taylor 406.544.4679			Yankee - Zulu	Rocky Wagoner
Medical Section Chief				Branch V	
Agency Representative				India	Unstaffed
SQF AA	Teresa Benson			Lima	Mike King
SQF AR	Al Watson			November	Unstaffed
INF AR	David Andersen			Uniform	Unstaffed
INF AA	John (Pancho) Smith			X-ray	Stryker Clark
SEKI AA	Lee Taylor			Night	Mike Brown
SQF Chief 1	Angie Sanchez-Hand				
Sequoia & Kings NPS	Dan Morford			Structure	
Tulare Co FD	Jeff McLaughlin			Black Rock / Backcountry	Geoff Farinholt
SoCAL Edison	Troy Whitman			Lloyd	Bryan Duffy
CHP	Chad Patton			Ponderosa	Brad Allen
Tribal Liaison	Dirk Charley			Nelson	Hunter Seaborn Bell
Tule River Tribe	Zane Santos				
Planning Section				Operations	
Section Chief	Robin Jermyn 406.360.5936 Rob Carlin (t)				
Deputy	Rob Gump 850.688.7623				
Situation Unit	Cameron Rasor 406.491.0351 Morganne Lehr (t)				
Demobilization Unit	Tanya Murphy 406.750.9805				
Resources Unit Leader	Anya Moline 406.366.1979 Anthony Watts (t)				
Status Check-in	Faith Anne Heinsch 406.370.8808				
Fire Behavior Analyst	Brian Anderson 406.660.0450 David Greathouse Lauren Blake (t)				
Long-Term Analyst	Lawen Hollingsworth 406.552.5440 Alicia Reiner (t)				
GIS Specialist	Erin Heiselmann 406.546.4014 Nate Meyer 307.761.1541 McIntyre Murphy (t)			Air Operations Branch	
Computer Specialist	Tim McCracken 406.407.3152			Air Operations Branch Director	Dennis Morton 406.660.2318
Meteorologist	Andrew Gorelow			Air Support Group Supervisor	Daniel Sepulveda
Human Resource	Andrea Cabida			Air Tactical Group Supervisor	Tony Duprey
Documentation Unit	Jenny Rechel				
SOPL	Roy Hall				
				Finance Section	
Logistics Section				Section Chief	Amy Schrenk 406.830.5214
Section Chief	Charlie Showers 406.370.3787 Leroy Evans (t)			Time Unit	Marta Lujan 970.275.3120
Ordering Manager	Rita Lind 406.291.3012			Equipment Time	Lynda Pike 406-382-0086
Supply Unit	Brent Elmore 605.641.0771			Personnel Time	Tama Lester 580.212.1017
Facilities Unit	James Andruzzi 917-443-2556			Cost Unit	Khon Viengkham 703.217.7269
Base Camp	Patrick Beers 253.318.7992			Procurement Unit Leader	Dana Bangart 406.360.0029
Ground Support Unit	Keith Windell 406.531.2987			Comps / Claims	Leon Augustine 406.363.8956 Shannon Maxwell 406.366.3724
Communications Unit	Dustin Sene 406.531.2987			IBA	Nancy Gibson
Communications Tech	Trent Coppinger 406.581.9027				
Medical Unit	Emily Ellick-Flettire 405.593.3369				
Food Unit					
Security Manager				Prepared by:	Anya Moline - RESL

Incident: SQF Complex CA-SQF-002622	Date: 9-04-2020 to 9-05-2020	Operational Period: 0600-0600
---	--	---

SAFETY MESSAGE

Firefighter safety comes first on every fire, every time

Major Hazards and Risks:

- **Fire Behavior** –Steep Topography and Canyon Systems, monitor fire weather and indicators of extreme fire behavior. Anticipate changes in weather condition.
- Plan on rolling material and spot fires compromising fire line safety and impacting the work site. Post a lookout during the entire shift watching for spot fires and rolling material.
- Use extra caution when driving due to the extreme congestion and narrow roads. Expect heavy traffic. Keep speed down when driving to & from division assignments and Spike Camp. Wear seatbelts always. Adhere to recommended work/rest cycles, especially for drivers.
- Adhere to the Ten Standard Fire Orders and mitigate any of the 18 Watch-Out Situations. Use all LCES options available to you.

Night Operations: Many unseen hazards await the night shift. Besides darkness; dust, smoke and headlight glare can further reduce visibility. Attempt to drive and scout out your work area in daylight. Use flagging and chemsticks to identify travel routes and hazards. Manage firefighter fatigue by taking short naps if possible. One Up/One Down. Post lookouts. Use appropriate lighting on your vehicles, especially when working along roadsides. Avoid all known overhead hazards and saw work that can be completed in the day light hours.

Dehydration, Heat Stress, and Fatigue: Constantly monitor your water and electrolyte intake to avoid dehydration. Dehydration and long work hours coupled with poor air quality and high temperatures all impact fatigue. We have all three. Maintain the work to rest ratio, 2:1.

Team Safeties: Gerald Vickers (SOF1), Dan Cassidy (SOF1), Todd Mott (SOF2t)



FIRE WEATHER FORECAST



FORECAST NO: 11
PREDICTION FOR: Sept. 4 - Sept. 5, 2020 0600-0600

INCIDENT NAME: SQF Complex
UNIT: CA-SQF
SIGNED: *Andrew Gorelow*

TIME AND DATE
FORECAST ISSUED: Thu, Sep 3 @ 2000 hours

Incident Meteorologist – Andrew Gorelow

WEATHER DISCUSSION: High pressure building into the region will lead to hot and dry conditions into the weekend with more unstable conditions. Winds in the morning below the inversion expected to be northwest to north 2-4 mph, however winds above the inversion may remain southeast with speeds 4 to 7 with gusts to 10 mph. The inversion is expected to lift between 1000 and 1100 with increasing southeast to south winds 4 to 9 mph gusting to 20 mph. A few more clouds expected over the Sierra Crest in the afternoon. After 1500, look for winds to shift to the southwest to west with speeds 4 to 9 mph gusts to 20 mph. Winds will continue to be heavily impacted by local terrain. Temperatures will be in the 80s to upper 90s. Poor overnight RH recoveries.

SKY/WEATHER TODAY (FRIDAY): Hot and dry. Valley inversions lifting by 1100. Morning downslope/downvalley winds 2 to 4 mph will turn southeast after 1000 with speeds 5 to 10 mph with occasional gusts to 20 mph. A southwest to west wind push is expected in the afternoon after 1500 with winds 4 to 9 gusts to 20 mph. However, winds will be heavily affected by the local terrain.

MAX TEMPERATURES / MIN RELATIVE HUMIDITY:

5000 FT: 93 to 98 degrees (Up 1-2 Degrees) / 9 to 14% (Little Change)
7000 FT: 84 to 89 degrees (Up 1-2 Degrees) / 12 to 17% (Little Change)

EYE LEVEL WINDS:

Slope/Valley: North to northeast drainage winds up to 4 mph through 1000. Inversions lifting by 1000. Winds shifting to the southeast 1000 with speeds 5 to 10 mph gusts to 20 mph. Winds becoming southwest to west with gusts up to 20 mph after 1500. Winds will continue to be heavily impacted by local terrain.

Ridges: Southeast 5 to 10 mph gusts to 15 mph.

MIXING HEIGHT...10,500 FT AGL **VENTILATION...**Good.

TRANSPORT WIND...Northeast around 5 mph in the morning, shifting to the southeast in the afternoon 5 to 10 mph.

CWR (0.10")...0% **LAL...**1 **HAINES...**5

SKY/WEATHER TONIGHT (FRIDAY NIGHT): Smoky. Inversions developing by 2200. Winds becoming drainage 3 to 5 mph after 2000 but could remain squirrely near the confluence of the Little Kern/Kern Rivers. Northeast to east winds 5 to 10 mph possible over the higher ridges. Overnight RH recoveries will remain poor.

MIN TEMPERATURES / MAX RELATIVE HUMIDITY

5000 FT: 55 to 60 degrees (Little Change) / 20 to 25% (Down 2-3%)
7000 FT: 63 to 68 degrees (Little Change) / 23 to 28% (Down 1-3%)

EYE LEVEL WINDS:

Slope/Valley: Northwest to north drainage winds 2 to 5 mph.

Ridges: Northeast to east 5 to 10 mph.

CWR (0.10")...0% **LAL...**1 **HAINES...**5

SATURDAY: Inversion lifting by 1000 with southeast winds increasing to 5 to 10 mph with gusts to 20 mph. Mostly sunny with a few cumulus clouds developing over the Sierra Crest. Slightly warmer temperatures and lower RH. Unstable conditions with a Haines of 6.

Max Temps: 85 to 100. **Min RH:** 7 to 15%. **Winds:** Morning drainage winds becoming southeast to south 5 to 10 mph with gusts to 20 mph. Becoming southwest to west with gusts to 20 mph after 1500.

LAL: 1 **CWR (0.10"):** 0% **MIXING HEIGHT:** 12,500 FT AGL **HAINES:** 6

OUTLOOK for SUNDAY and MONDAY:

Weather: Partly cloudy in the afternoon with a slight chance of thunderstorms over the higher terrain Sunday. Gusty outflow winds possible. Continued very hot. Terrain influenced winds each day. A few clouds on the higher peaks.

High Temp: 83-97 **Min RH:** 8-18% **CWR:** 0% **LAL:** 2 (Sunday) **Wind:** West to northwest 5 to 15 mph.

FIRE BEHAVIOR FORECAST

FORECAST NUMBER: 14	TYPE OF FIRE: Wildland
FIRE NAME: SQF Complex	OPERATIONAL PERIOD: 9/4-9/5/2020 0600-0600
DATE ISSUED: September 3, 2020	TIME ISSUED: 1800
UNIT: CA-Sequoia National Forest	SIGNED: /s/ David Greathouse FBAN/ Lauren Blake FBAN(t)

WEATHER SUMMARY

Hot and dry. Valley inversions lifting by 1100. Poor overnight RH recoveries. Haines of 5.

(See Fire Weather for details.)

FIRE BEHAVIOR

GENERAL

Fuels- Fuels involved in the Castle Fire are primarily Fire Behavior Fuel Models (FBFM) timber litter and understory (TU5) in areas without recent fire history, and a mix of grass (GR2) and brush (GS2) in burn scars less than 20 years old. The Shotgun Fire is higher elevation and does not have recent fire history in its current footprint and is more represented by a grass shrub (GS2) moderate timber litter (TL6).

Topography- Topography in the fire area is dominated by the Kern River. This river drainage runs north/south and is steep and narrow, roughly bisecting the fire area down the middle. Terrain has played a central role in fire spread, taking the predominantly SW flow and directing it in every way imaginable across the fire area.

Parameters for Behave Run: 1hr:4, 10hr:5, 100hr:7 Temp: 85 Slope avg: 30%

	Max Rate of Spread	Max Flame Lengths	Spotting Distances	POI
GR2	100-120 ch/hr.	6-10'	½ mi	80%
GS2	70-80 ch/hr.	6-10'	½ mi	80%
TU5	22-28 ch/hr.	10-13'	½ mi	100%
TL6	12-18 ch/hr.	3-6'	¼ mi	80%

SPECIFIC

Branch I

Div. A/B- If burning operations continue in the Burnt Meadows down to the dozer line, afternoon winds after they shift to a west wind will present the most favorable conditions.

Div. C/G- Minimal growth in the Lion Fire area in Div. C. The fire will continue work its way north up Leggett and Grasshopper Creek following terrain and available fuels.

Div. Y/Z- Periods of terrain influenced SE flow in the morning offer opportunities for slope/wind/aspect aligned runs towards values at risk west of the fire. As west wind follows terrain in the afternoon, possible W/NW winds may present on the fireline.

Branch V

Div. I/L/N/U- The fire will continue to burn through Chinquapin basin in DIV I. After and active day yesterday, the fire will continue to burn NE through the Cold and Nine Mile Creek drainages. Expect the fire behavior to become active after 1300 and continue until sunset.

Div. X- Fire will push through brush patches and roll out with steep terrain. Fire behavior in the Schaeffer fire scar will be light to moderate as it finds brush/grass patches and terrain but should provide opportunities to go direct.

Shotgun Fire The fire slowly continues to progress to the drainages and find available fuel. If the fire finds its way across the creek bottom, expect a slope reversal and short terrain/ wind aligned runs.

AIR OPERATIONS

Smoke should lift around 1100 to support air missions.

SAFETY

Fire order #1 – Keep informed on fire weather conditions and forecasts. Monitor the weather, read and understand the forecasts, ask questions, and most importantly, share them with your people!

DIVISION ASSIGNMENT LIST		Branch	Division/Group
Incident Name		I	ALPHA / BRAVO
SQF Complex		Operational Period	
		Date: 9/4/2020 to 9/5/2020	Time: 0600-0600
Operations Personnel			
Operations Chief	Brent Olson, Scott Schrenk Andy James (t) Shawn Borgen (t)	Branch Director	Justin Kaber
Safety Officer	Gerald Vickers, Dan Cassidy	Division/Group Supervisor	Kate Airhart 406-360-0506

Resources Assigned This Period

Strike Team/Task Force/ Resource Designator	Req#	Last Shift	Leader	# Persons	Drop Off Point /Time	Pick Up Point / Time
HC1 Fulton	C-67	9/15	Josh Acosta	20	Whitsett Base 0600	Whitsett Base 2100
WFM Sequoia	O-266	9/12	Aaron Woodyard	8	Whitsett Base 0600	Whitsett Base 2100
HC2 Scorpions 3	C-13	9/6	Dileep Bobba	22	Whitsett Base 0600	Whitsett Base 2100
TFLD(t)	O-336	9/14	Scott Turner	1	Whitsett Base 0600	Whitsett Base 2100
TFLD	O-259	9/5	Issac Solomon	1	Whitsett Base 0600	Whitsett Base 2100
HEQB	O-415	9/14	Joshua Perkins	1	Whitsett Base 0600	Whitsett Base 2100
ENG6 High Desert	E-137	9/12	Thomas Hanks	3	Whitsett Base 0600	Whitsett Base 2100
ENG6 Red Dog	E-167	9/12	Tim England	2	Whitsett Base 0600	Whitsett Base 2100
WT2 K&B	E-48	9/7	Mike Morgan	1	Whitsett Base 0600	Whitsett Base 2100
WT2 Angulo	E-89	9/11	Albert Angulo	1	Whitsett Base 0600	Whitsett Base 2100
WT2 CNF WT222	E-145	9/12	Andrew Peterson	2	Whitsett Base 0600	Whitsett Base 2100
SKG2 Alvord Fire	E-180	9/16	Justin Davis	1	Whitsett Base 0600	Whitsett Base 2100
SKG2 Alvord Fire	E-194	9/16	Bernard Saul	2	Whitsett Base 0600	Whitsett Base 2100
DOZ2 Westlund	E-139	9/12	Alan Westlund	2	Whitsett Base 0600	Whitsett Base 2100
DOZ2 ANF 12	E-142	9/10	Doug Lander	2	Whitsett Base 0600	Whitsett Base 2100
EXC2 Sandborg	E-179	9 /13	Chuck Sandborg	2	Whitsett Base 0600	Whitsett Base 2100
EXC2 Denis Equip	E-188	9/15	Anthony Pezzi	2	Whitsett Base 0600	Whitsett Base 2100
GRD2 Kirklang	E-97	9/ 9	Todd Adams	2	Whitsett Base 0600	Whitsett Base 2100
CHlp1 Wyeas Forestry	E-192	9/16	Ryan Grigsby	2	Whitsett Base 0600	Whitsett Base 2100
FALM Tree Guys	O-178	9/9	Chase Bishop	2	Whitsett Base 0600	Whitsett Base 2100
SOFR	O-171	9/9	Eric Klemowicz	1	Whitsett Base 0600	Whitsett Base 2100
SOFR	O-183	9/11	Joseph Fowler	1	Whitsett Base 0600	Whitsett Base 2100
EMPF	O-340	9/8	Ron Spellman	1	Whitsett Base 0600	Whitsett Base 2100
EMPF	O-341	9/8	John Sitar	1	Whitsett Base 0600	Whitsett Base 2100
AMBU	E-170	9/13	Castle 3	1	Whitsett Base 0600	Whitsett Base 2100
REMS	O-332	9/13	REMS	1	Whitsett Base 0600	Whitsett Base 2100
REAF	O-50	9/6	Ernest Wingate	1	Whitsett Base 0600	Whitsett Base 2100
READ	O-277	9/11	Scott Dailey	1	Whitsett Base 0600	Whitsett Base 2100

Work Assignments

Task: Evaluate fire progression to the west in Bravo and develop and implement tactics to prevent spread outside of the wilderness to the south. Hold the current fire perimeter and construct direct line as appropriate between 31E14 trail and Jerky Meadow. Construct line from Jerky Meadow to Div A / Z break.

Purpose: Keep the fire spread east of Lloyd Meadow Road, north of Ponderosa and Mountain Home community

End State: Limit fire spread into additional values at risk to protect communities and infrastructure.

Special Instructions

- Personnel to notify DIVS of potentially sensitive cultural materials.
- Castle Ambulance 1 staged at Whitsett Base Camp. Castle Ambulance 2 stage at R Ranch Spike. Castle REMS available to all DIVS.
- Prioritization of all control or containment actions taken during the operational period in this Division will be at the discretion of the DIVS. Actions may have to be taken by the DIVS that are not enumerated in today's IAP. These actions would be a result of a significant change in actual or expected fire behavior over and above that anticipated at the time the IAP was prepared. These actions will be coordinated with and approved by the OSC whenever possible.

Division/Group Communication Summary

Function	Channel	Frequency RX	Frequency TX	TONE RX	TONE TX	Function	Channel	Frequency RX	Frequency TX
Command	1	170.0000	166.6750	151.4	151.4	A/G Pri	13	172.3500	172.3500
Tactical	5	168.0500	168.0500	151.4	151.4	A/G Sec	14	169.1500	169.1500
Prepared by Anya Moline – RESL	Approved By Robin Jermyn - PSC				Date 9/3/2020			Time 1800	

This page intentionally left blank

DIVISION ASSIGNMENT LIST		Branch	Division/Group
Incident Name		I	YANKEE / ZULU page 1 of 2
SQF Complex		Operational Period	
		Date: 9/4/2020 to 9/5/2020	Time: 0600-0600
Operations Personnel			
Operations Chief	Brent Olson, Scott Schrenk, Andy James (t) Shawn Borgen (t)	Branch Director	Justin Kaber
Safety Officer	Gerald Vickers, Dan Cassidy	Division/Group Supervisor	Rocky Wagoner 406-531-9809

Resources Assigned This Period						
Strike Team/Task Force/ Resource Designator	Req#	Last Shift	Leader	# Persons	Drop Off Point /Time	Pick Up Point / Time
HC1 Dalton	C-53	9/11	Scott Gorman	19	Whitsett Base 0600	Whitsett Base 2100
HC1 Vista Grande	C-54	9/12	Jess Estrada	19	Whitsett Base 0600	Whitsett Base 2100
HC1 Cherokee	C-83	9/17	Josh Tester	20	Whitsett Base 0600	Whitsett Base 2100
HC2IA Black Eagles 2	C-2	9/3	Gustavo Santoyo	22	Whitsett Base 0600	Whitsett Base 2100
HC2IA Black Eagles 5	C-3	9/4	Reyes Bedolla	21	Whitsett Base 0600	Whitsett Base 2100
HC2 Cobras 6	C-6	9/3	Walter Medina	20	Whitsett Base 0600	Whitsett Base 2100
WFM Horseshoe	O-1	9/3	Candice Kutrosky	13	Whitsett Base 0600	Whitsett Base 2100
WFM Groveland	O-186	9/9	Timothy Markin	8	Whitsett Base 0600	Whitsett Base 2100
ENG3 STF-314	E-60	9/8	Ron Plummer	5	Whitsett Base 0600	Whitsett Base 2100
ENG3 A1Fire E13	E-79	9/11	Wyatt Lawrence	3	Whitsett Base 0600	Whitsett Base 2100
ENG4 Troy	E-134	9/12	Dan Hokanson	3	Whitsett Base 0600	Whitsett Base 2100
ENG6 Flame Chaser	E-133	9/15	Duane Many Hides	3	Whitsett Base 0600	Whitsett Base 2100
ENG6 R Construction	E-166	9/12	Richard Deroche	3	Whitsett Base 0600	Whitsett Base 2100
ENG6 Utah Fire Co.	E-168	9/12	Anthony Olveda	3	Porterville	Porterville
ENG6 Buffalo	E-132	9/14	Gregg Webster	3	Whitsett Base 0600	Whitsett Base 2100
WT2 Dust Busters	E-49	9/11	Nathan Stutz	2	Whitsett Base 0600	Whitsett Base 2100
WT2 49ERS	E-50	9/11	Steve Smith	1	Whitsett Base 0600	Whitsett Base 2100
WT2 Valley Farms	E-88	9/8	Jeff Bates	1	Whitsett Base 0600	Whitsett Base 2100
WT2 SQF WT2	E-114	9/9	Jaime Ayaly	2	Whitsett Base 0600	Whitsett Base 2100
WT2 BDF WT212	E-143	9/13	Christopher Sequra	2	Whitsett Base 0600	Whitsett Base 2100
WT2 Central 25	E-146	9/13	Jeff Nevins	2	Whitsett Base 0600	Whitsett Base 2100

Work Assignments
Task: Construct direct line from the Div Z / A break along the Castle Mountain ridge to Kern Canyon and the river's edge, burning out as necessary to prevent fire spread to the west toward values at risk. Mop up as appropriate.
Purpose: Limit fire spread toward values at risk on the west side of the fire.
End State: Private property and infrastructure is protected, natural resource impacts are limited, and there are no accidents or injuries to firefighters or the public.

- Special Instructions**
- Personnel to notify DIVS of potentially sensitive cultural materials.
 - Castle Ambulance 1 staged at Whitsett Base Camp. Castle Ambulance 2 stage at R Ranch Spike. Castle REMS available to all DIVS.
 - Crews be prepared to spike.
 - Prioritization of all control or containment actions taken during the operational period in this Division will be at the discretion of the DIVS. Actions may have to be taken by the DIVS that are not enumerated in today's IAP. These actions would be a result of a significant change in actual or expected fire behavior over and above that anticipated at the time the IAP was prepared. These actions will be coordinated with and approved by the OSC whenever possible.

Division/Group Communication Summary									
Function	Channel	Frequency RX	Frequency TX	TONE RX	TONE TX	Function	Channel	Frequency RX	Frequency TX
Command	1	170.0000	166.6750	151.4	151.4	A/G Pri	13	172.3500	172.3500
Tactical	8	166.7750	166.7750	151.4	151.4	A/G Sec	14	169.1500	169.1500
Prepared by	Approved By		Date		Time				
Anya Moline – RESL	Robin Jermyn – PSC		9/3/2020		1800				

DIVISION ASSIGNMENT LIST		Branch	Division/Group
Incident Name		I	YANKEE / ZULU page 2 of 2
SQF Complex		Operational Period	
		Date: 9/4/2020 to 9/5/2020	Time: 0600-0600
Operations Personnel			
Operations Chief	Brent Olson, Scott Schrenk, Andy James (t) Shawn Borgen (t)	Branch Director	Justin Kaber
Safety Officer	Gerald Vickers, Dan Cassidy	Division/Group Supervisor	Rocky Wagoner 406-531-9809

Resources Assigned This Period						
Strike Team/Task Force/ Resource Designator	Req#	Last Shift	Leader	# Persons	Drop Off Point /Time	Pick Up Point / Time
DOZ2 Shannon Bros.	E-44	9/7	Bill Shannon	1	Whitsett Base 0600	Whitsett Base 2100
DOZ2 Shannon Bros.	E-45	9/7	John Shannon	1	Whitsett Base 0600	Whitsett Base 2100
DOZ2 STF 51	E-118	9/7	Mike Nott	2	Whitsett Base 0600	Whitsett Base 2100
DOZ2 Conner	E-83	9/8	Tim Conner	1	Whitsett Base 0600	Whitsett Base 2100
FALM Timbersmith	O-176	9/9	Keenan Smith	2	Whitsett Base 0600	Whitsett Base 2100
FALM Timbersmith	O-177	9/9	Ryan Deniz	2	Whitsett Base 0600	Whitsett Base 2100
SOFR	O-234	9/12	Dwayne Johnson	1	Whitsett Base 0600	Whitsett Base 2100
SOFR	O-270	9/14	Philip Bordelon	1	Whitsett Base 0600	Whitsett Base 2100
SOFR	O-389	9/16	James Gregory	1	Whitsett Base 0600	Whitsett Base 2100
EMPF	O-92	9/7	Robert Abbruzzese	1	Whitsett Base 0600	Whitsett Base 2100
EMTF			Patrick Garcia	1	Whitsett Base 0600	Whitsett Base 2100
EMPT	O-341	9/8	John Sitar	1	Whitsett Base 0600	Whitsett Base 2100
AMBU	E-170	9/13	Castle 3	1	Whitsett Base 0600	Whitsett Base 2100
REAF	O-141	9/8	Marcos Rios	1	Whitsett Base 0600	Whitsett Base 2100
REAF	O-228	9/12	Michael Mcgraw	1	Whitsett Base 0600	Whitsett Base 2100
REAF	O-229	9/13	Lanny Flaherty	1	Whitsett Base 0600	Whitsett Base 2100
REAF	O-231	9/11	Donna Peppin	1	Whitsett Base 0600	Whitsett Base 2100
READ	O-276	9/4	Tracy Knapp	1	Whitsett Base 0600	Whitsett Base 2100

Work Assignments

Task: Construct direct line from the Div Z / A break along the Castle Mountain ridge to Kern Canyon from the Div Z / Y break to the river's edge, burning out as necessary to prevent fire spread to the west toward values at risk. Mop up as appropriate with firefighter safety in consideration.

Purpose: Limit fire spread toward values at risk on the west side of the fire.

End State: Private property and infrastructure is protected, natural resource impacts are limited, and there are no accidents or injuries to firefighters or the public.

Special Instructions

- Personnel to notify DIVS of potentially sensitive cultural materials.
- Castle Ambulance 1 staged at Whitsett Base Camp. Castle Ambulance 2 stage at R Ranch Spike. Castle REMS available to all DIVS.
- Prioritization of all control or containment actions taken during the operational period in this Division will be at the discretion of the DIVS. Actions may have to be taken by the DIVS that are not enumerated in today's IAP. These actions would be a result of a significant change in actual or expected fire behavior over and above that anticipated at the time the IAP was prepared. These actions will be coordinated with and approved by the OSC whenever possible.

Division/Group Communication Summary

Function	Channel	Frequency RX	Frequency TX	TONE RX	TONE TX	Function	Channel	Frequen cy RX	Frequency TX
Command	1	170.0000	166.6750	151.4	151.4	A/G Pri	13	172.3500	172.3500
Tactical	8	166.7750	166.7750	151.4	151.4	A/G Sec	14	169.1500	169.1500

Prepared by Anya Moline – RESL	Approved By Robin Jermyn – PSC	Date 9/3/2020	Time 1800
-----------------------------------	-----------------------------------	------------------	--------------

DIVISION ASSIGNMENT LIST			Branch		Division/Group				
Incident Name			V		LIMA				
SQF Complex			Operational Period						
			Date: 9/4/2020 to 9/5/2020		Time: 0600-0600				
Operations Personnel									
Operations Chief	Brent Olson, Scott Schrenk, Andy James (t) Shawn Borgen (t)		Branch Director		Ryan Butler / Logan Sanders (t) 406-250-0375 / 209-613-4951				
Safety Officer	Gerald Vickers, Dan Cassidy		Division/Group Supervisor		Mike King 406-370-2121				
Resources Assigned This Period									
Strike Team/Task Force/Resource Designator	Req#	Last Shift	Leader	# Persons	Drop Off Point /Time	Pick Up Point / Time			
HC1 Golden Eagles	C-55	9/14	Robert Villegas	19	Troy Meadows 0600	Troy Meadows 2100			
HC1 Sierra	C-57	9/13	Alan Roby	21	Troy Meadows 0600	Troy Meadows 2100			
WFM Mammoth	O-49	9/6	Jeffrey Karl	8	Troy Meadows 0600	Troy Meadows 2100			
DOZ2	E-5	9/6	Danny Lewis	3	Troy Meadows 0600	Troy Meadows 0600			
DOZ2	E-140	9/11	David Krisher	2	Troy Meadows 0600	Troy Meadows 0600			
Inyo Pack String	E-56	9/7	Lee Roesser	3	Troy Meadows 0600	Troy Meadows 2100			
SOF2	O-496		Tom Nash	1	Troy Meadows 0600	Troy Meadows 2100			
SOFR (t)	O-393	9/16	Jacob Broiller	1	Troy Meadows 0600	Troy Meadows 2100			
SORF (t)	O-511	9/17	Augie Barreda	1	Troy Meadows 0600	Troy Meadows 2100			
EMPF	O-497	9/16	Tommy Kabanaugh	1	Troy Meadows 0600	Troy Meadows 2100			
EMPF	O-495	9/16	Scott Hamilton	1	Troy Meadows 0600	Troy Meadows 2100			
EMPF	O-551	9/16	Mathew Heckman	1	Troy Meadows 0600	Troy Meadows 2100			
EMTF			Steve Devincenzi	1	Troy Meadows 0600	Troy Meadows 2100			
READ	O-40	9/5	Jaymee Hasty	1	Troy Meadows 0600	Troy Meadows 2100			
READ	O-228	9/12	Michael McGraw	1	Troy Meadows 0600	Troy Meadows 2100			
READ	O-231	9/11	Donna Peppin	1	Troy Meadows 0600	Troy Meadows 2100			
READ	O-252	9/11	Adam Toomey	1	Troy Meadows 0600	Troy Meadows 2100			
Work Assignments									
Task: Scout for opportunities to construct direct and indirect line, provide point protection as needed.									
Purpose: Limit impact to values at risk on northern edge within wilderness, limit fire spread on eastern edge of fire.									
End State: Values at risk in wilderness are not impacted, spread of fire to east is limited in divisions L and N									
Special Instructions									
<ul style="list-style-type: none"> Personnel to notify DIVS of potentially sensitive cultural materials. Castle Ambulance 1 staged at Whitsett Base Camp. Castle Ambulance 2 stage at R Ranch Spike. Castle REMS available to all DIVS. Prioritization of all control or containment actions taken during the operational period in this Division will be at the discretion of the DIVS. Actions may have to be taken by the DIVS that are not enumerated in today's IAP. These actions would be a result of a significant change in actual or expected fire behavior over and above that anticipated at the time the IAP was prepared. These actions will be coordinated with and approved by the OSC whenever possible. 									
Division/Group Communication Summary									
Function	Channel	Frequency RX	Frequency TX	TONE RX	TONE TX	Function	Channel	Frequency RX	Frequency TX
	Command	2	170.6875	166.5750	151.4		151.4	A/G Pri	13
Tactical	9	168.2500	168.2500	151.4	151.4	A/G Sec	14	169.1500	169.1500
Prepared by Anya Moline - RESL		Approved By Robin Jermyn - PSC			Date 9/3/2020		Time 1800		

DIVISION ASSIGNMENT LIST			Branch			Division/Group			
Incident Name			V			X-RAY			
SQF Complex			Operational Period						
			Date: 9/4/2020 to 9/5/2020			Time: 0600-0600			
Operations Personnel									
Operations Chief	Brent Olson, Scott Schrenk, Andy James (t) Shawn Borgen (t)		Branch Director			Ryan Butler / Logan Sanders (t) 406-250-0375 / 209-613-4951			
Safety Officer	Gerald Vickers, Dan Cassidy		Division/Group Supervisor			Stryker Clark 406-546-7405			
Resources Assigned This Period									
Strike Team/Task Force/Resource Designator	Req#	Last Shift	Leader	# Persons	Drop Off Point /Time	Pick Up Point / Time			
HC1 Los Padres	C-56	9/13	Matt Aoki	19	Troy Meadows 0600	Troy Meadows 2100			
HC1 Bear Divide	C-66	9/13	Josh Thomas	19	Troy Meadows 0600	Troy Meadows 2100			
HC1 Crane Valley	C-73	9/16	Matt Dunlap	18	Troy Meadows 0600	Troy Meadows 2100			
EMPF	O-92	9/7	Bryan Swenson	1	Troy Meadows 0600	Troy Meadows 2100			
EMPF	O-233	9/10	Silas Fischer	1	Troy Meadows 0600	Troy Meadows 2100			
EMPF	O-91	9/15	Royce Copeman	1	Troy Meadows 0600	Troy Meadows 2100			
EMPF	O-342	9/15	Yoshimi Toyota	1	Troy Meadows 0600	Troy Meadosw 2100			
Work Assignments									
<p>Task: Coordinate with resources west of the Kern River to contain fire spread east of the Kern River. Utilize ground and air operations assets to construct helispots within division to allow crews to be logistically supported. Secure fires edge from the east side of the Kern river to the east utilizing direct and indirect tactics. Initiate firing operations as needed.</p> <p>Purpose: Limit fire spread to the south and east. Crews are supported with supplies in order to progress east with line construction.</p> <p>End State: Fire progression to the east and south is contained.</p>									
Special Instructions									
<ul style="list-style-type: none"> Personnel to notify DIVS of potentially sensitive cultural materials. Castle Ambulance 1 staged at Whitsett Base Camp. Castle Ambulance 2 stage at R Ranch Spike. Castle REMS available to all DIVS. Prioritization of all control or containment actions taken during the operational period in this Division will be at the discretion of the DIVS. Actions may have to be taken by the DIVS that are not enumerated in today's IAP. These actions would be a result of a significant change in actual or expected fire behavior over and above that anticipated at the time the IAP was prepared. These actions will be coordinated with and approved by the OSC whenever possible. 									
Division/Group Communication Summary									
Function	Channel	Frequency RX	Frequency TX	TONE RX	TONE TX	Function	Channel	Frequen cy RX	Frequency TX
Command	2	170.6875	166.5750	151.4	151.4	A/G Pri	13	172.3500	172.3500
Tactical	7	166.7250	166.7250	151.4	151.4	A/G Sec	14	169.1500	169.1500
Prepared by Anya Moline – RESL		Approved By Robin Jermyn - PSC				Date 9/3/2020		Time 1800	

DIVISION ASSIGNMENT LIST			Branch		Division/Group				
Incident Name			V		NIGHT				
SQF COMPLEX			Operational Period						
			Date: 9/4/2020 to 9/5/2020		Time: 1800-0900				
Operations Personnel									
Operations Chief	Brent Olson, Scott Schrenk, Andy James (t) Shawn Borgen (t)		Branch Director		Ryan Butler / Logan Sanders (t) 406-250-0375 / 209-613-4951				
Safety Officer	Gerald Vickers, Dan Cassidy		Division/Group Supervisor		Mark Brown				
Resources Assigned This Period									
Strike Team/Task Force/ Resource Designator	Req#	Last Shift	Leader	# Persons	Drop Off Point /Time	Pick Up Point / Time			
WFM Slate Mtn	O-4	9/5	Angel Reyes	10	Whitsett Base 0600	Whitsett Base 2100			
ENG3 OVD E3132	E-135	9/11	Phillip Lewis	4	Whitsett Base 0600	Whitsett Base 2100			
ENG3 STF E346	E-136	9/11	Michael Scheu	5	Whitsett Base 0600	Whitsett Base 2100			
ENG6 Blue Sky E8	E-63	9/10	Alex Parker	3	Whitsett Base 0600	Whitsett Base 2100			
ENG6 Cahoon 1	E-64	9/11	Blane Fifield	3	Whitsett Base 0600	Whitsett Base 2100			
ENG6 Cahoon 2	E-65	9/11	Randy Mattson	3	Whitsett Base 0600	Whitsett Base 2100			
ENG6 Solomon	E-66	9/12	William Hughes	3	Whitsett Base 0600	Whitsett Base 2100			
ENG6 E696	E-72	9/9	William McDarment	3	Whitsett Base 0600	Whitsett Base 2100			
ENG6 Peanut Pie E2	E-78	9/11	Wayde Visser	3	Whitsett Base 0600	Whitsett Base 2100			
WT2 INF WT21	E-90	9/11	Cameron Ferrante	2	Whitsett Base 0600	Whitsett Base 2100			
WT2 ANF 237	E-113	9/10	Francisco Carrillo	2	Whitsett Base 0600	Whitsett Base 2100			
SOFR	O-213	9/11	Paul Tadlock	1	Whitsett Base 0600	Whitsett Base 2100			
AMBU	E-46		Castle1	2	Whitsett Base 0600	Whitsett Base 2100			
Work Assignments									
Task: Patrol and monitor accessible fire area, support water handling operations from prior shifts, mop-up as appropriate based on firefighter safety.									
Purpose: Limit fire spread to additional values at risk.									
End State: Fire spread limited to existing fire perimeter.									
Special Instructions									
<ul style="list-style-type: none"> Personnel to notify DIVS of potentially sensitive cultural materials. Castle Ambulance 1 staged at Whitsett Base Camp. Castle Ambulance 2 stage at R Ranch Spike. Castle REMS available to all DIVS. Prioritization of all control or containment actions taken during the operational period in this Division will be at the discretion of the DIVS. Actions may have to be taken by the DIVS that are not enumerated in today's IAP. These actions would be a result of a significant change in actual or expected fire behavior over and above that anticipated at the time the IAP was prepared. These actions will be coordinated with and approved by the OSC whenever possible. 									
Division/Group Communication Summary									
Function	Channel	Frequency RX	Frequency TX	TONE RX	TONE TX	Function	Channel	Frequency RX	Frequency TX
	Command	See 205					A/G Pri	13	172.3500
Tactical	5	168.0500	168.0500	151.4	151.4	A/G Sec	14	169.1500	169.1500
Tactical									
Prepared by		Approved By			Date		Time		
Anya Moline – RESL		Robin Jermyn - PSC			9/3/2020		1800		

DIVISION ASSIGNMENT LIST				Branch		Division/Group				
Incident Name				STRUCTURE		BLACK ROCK / BACKCOUNTRY				
SQF Complex				Operational Period						
				Date: 9/4/2020 to 9/5/2020			Time: 0600-0600			
Operations Personnel										
Operations Chief		Brent Olson, Scott Schrenk, Andy James (t) Shawn Borgen (t)			Branch Director		Drew Daily			
Safety Officer		Gerald Vickers, Dan Cassidy			Division/Group Supervisor		Geoff Farinholt 406-529-5671			
Division/Group Supervisor										
Strike Team/Task Force/ Resource Designator	Req#	Last Shift	Leader		# Persons	Drop Off Point/Time		Pick Up Point / Time		
ENG3 SQF E-341	E-216	9/15			5	Troy Meadows 0600		Troy Meadows 2100		
ENG6 Flame Cahser	E-198	9/5	Edwin Hall		3	Troy Meadows 0600		Troy Meadows 2100		
ENG6 White Horse	E-199	9/15	Jason McGaughy		3	Troy Meadows 0600		Troy Meadows 2100		
ENG6 Late Summers	E-200	9/5	Josh Crollard		3	Troy Meadows 0600		Troy Meadows 2100		
ENG6 Late Summers	E-201	9/5	Brad Beck Jr.		3	Troy Meadows 0600		Troy Meadows 2100		
ENG5 Ultimate	E-202	9/4	Russell Haynes		3	Troy Meadows 0600		Troy Meadows 2100		
ENG5 Cate Land Fire	E-203	9/16			3	Troy Meadows 0600		Troy Meadows 2100		
ENG6 Dillon Fire	E-204	9/7	Riley Leingang		3	Troy Meadows 0600		Troy Meadows 2100		
ENG6 RandR	E-205	9/7	Mike Cox		3	Troy Meadows 0600		Troy Meadows 2100		
AMBU	E-52		Castle 2		1	Troy Meadows 0600		Troy Meadows 2100		
Work Assignments										
Task: Develop and implement structure protection plan for Black Rock, Bonita Meadow, West Meadow and back country/wilderness structures.										
Purpose: Protect values at risk from wildfire impacts.										
End State: Values at risk and communities are able to operate in pre-fire condition.										
Special Instructions										
<ul style="list-style-type: none"> Personnel to notify DIVS of potentially sensitive cultural materials. Castle Ambulance 1 staged at Whitsett Base Camp. Castle Ambulance 2 stage at R Ranch Spike. Castle REMS available to all DIVS. Prioritization of all control or containment actions taken during the operational period in this Division will be at the discretion of the DIVS. Actions may have to be taken by the DIVS that are not enumerated in today's IAP. These actions would be a result of a significant change in actual or expected fire behavior over and above that anticipated at the time the IAP was prepared. These actions will be coordinated with and approved by the OSC whenever possible. 										
Division/Group Communication Summary										
Function	Channel	Frequency RX	Frequency TX	TONE RX	TONE TX	Function	Channel	Frequency RX	Frequency TX	
Command	2	170.6875	166.5750	151.4	151.4	A/G Pri	13	172.3500	172.3500	
Command	3	172.5500	162.1875	151.4	151.4	A/G Sec	14	169.1500	169.1500	
Tactical	12	154.2875	154.2875	156.7	156.7					
Prepared by Anya Moline – RESL		Approved By Robin Jermyn - PSC				Date 9/3/2020			Time 1800	

DIVISION ASSIGNMENT LIST			Branch			Division/Group			
Incident Name			STRUCTURE			LLOYD			
SQF Complex			Operational Period						
			Date: 9/4/2020 to 9/5/2020			Time: 0600-0600			
Operations Personnel									
Operations Chief		Brent Olson, Scott Schrenk, Andy James (t) Shawn Borgen (t)		Branch Director			Drew Daily		
Safety Officer		Gerald Vickers, Dan Cassidy		Division/Group Supervisor			Bryan Duffy		
Resources Assigned This Period									
Strike Team/Task Force/ Resource Designator		Req#	Last Shift	Leader	# Persons	Drop Off Point /Time	Pick Up Point / Time		
S/T ENG3 XSB 1521C		E-110	9/4	Mike Deponce	21	Whitsett Base 0600	Whitsett Base 2100		
T/F XTU 5182		E-31	9/5	Duane Shiers	16	Whitsett Base 0600	Whitsett Base 2100		
S/T ENG6 FTU 5184F		E-115	9/10	Rick Doyle	11	Whitsett Base 0600	Whitsett Base 2100		
WT2 SNF WT23		E-114	9/13	Faustino Caballero	2	Whitsett Base 0600	Whitsett Base 2100		
Work Assignments									
Task: Provide structure defense for the Lloyd Meadows, Pyle's Camp, Peppermint Ranch Communities, T-T Ranch, Camp Whitsett and Forest Service Campgrounds.									
Purpose: Protect values at risk from spreading fire.									
End State: Values at risk and communities are able to operate in pre-fire condition.									
Special Instructions									
<ul style="list-style-type: none"> Personnel to notify DIVS of potentially sensitive cultural materials. Castle Ambulance 1 staged at Whitsett Base Camp. Castle Ambulance 2 stage at R Ranch Spike. Castle REMS available to all DIVS. Prioritization of all control or containment actions taken during the operational period in this Division will be at the discretion of the DIVS. Actions may have to be taken by the DIVS that are not enumerated in today's IAP. These actions would be a result of a significant change in actual or expected fire behavior over and above that anticipated at the time the IAP was prepared. These actions will be coordinated with and approved by the OSC whenever possible. 									
Division/Group Communication Summary									
Function	Channel	Frequency RX	Frequency TX	TONE RX	TONE TX	Function	Channel	Frequency RX	Frequency TX
	Command	1	170.0000	166.6750	151.4		151.4	A/G Pri	13
Tactical	11	168.2375	168.2375	151.4	151.4	A/G Sec	14	169.1500	169.1500
Prepared by		Approved By				Date		Time	
Anya Moline – RESL		Robin Jermyn - PSC				9/3/2020		1800	

AIR OPERATIONS SUMMARY 220		Prepared By: Daniel Sepulveda	Prepared: 09/3/2020	Prepared Time: 1900 hrs.	
1. INCIDENT NAME: SQF Complex	2. OPERATIONAL PERIOD 09/4/2020	START TIME: 0800	END TIME: 2000	SUNRISE: 0631	SUNSET: 1919

3. REMARKS (Safety Notes, Hazards, Air Operations Special Equipment, etc.). 1. Assess mission complexity and the Benefit vs Risk of the mission. 2. Ensure visibility and winds are adequate to safely conduct flight operations. 3. Ensure safe vertical & horizontal separation between aircraft in smoky conditions. 4. Utilize check points and call in and out of the dips. 5. If you see a UAS on your division report it up the chain of command to Air Operations, it may or may not be a friendly! 6. Smoky conditions can hamper our aviation operations adhere to visibility limitations, and DO NOT be pressured into accepting a mission that you know or feel is unsafe!	4. READY ALERT AIRCRAFT: H-408 Hoist Day/Night Capable Order through Communications/Air Attack/Peppermint Helibase See Medical Plan in the IAP	5. TFR: 0/100 Freq: 123.725 Altitude: From the surface up to and including 12,000 feet MSL Polygon see NOTAM
---	--	--

6. PERSONNEL	NAME	PHONE #	7. FREQUENCIES	AM	FM	8. FIXED-WING Avail/ Type/ Make-Model/ N#/ Base
AOBD	Dennis A. Morton	406.660.2318	A/A (Fixed)		165.9875	AIRTANKERS: ORDER THRU ATGS
ASGS	Daniel Sepulveda	909.374.8944	A/A (Rotor)	123.725		
ATGS	Tony Dupree	805.450.2676				ATGS Platforms: N47TT – AC690 (Dupree)
HEBM Porterville	Jesse Rodriguez	909-253-444	A/G (Buckets)	TAC	172.3500	
HEBM(T) Porterville	Darren Stanford	909.702.8344	A/G Secondary	CMD	169.1500	Order Type 1 Helicopters through ATGS Order Air Tankers through ATGS
HEBM Peppermint	George Garcia	559.542.2301	CALCORD/Medivacs		156.0750	
ATBM	Raul Contreras	559.789.0191	DECK		163.100	
			TOLC	123.9750		
			Porterville UNICOM	122.800		
			*PSD DISCREET ONLY		170.0750	Email daily aircraft costs to: castleairoperations@gmail.com
			Air Guard		168.6250 (110.9 TX)	
						Porterville Aviation Desk: 559.782.3120

9. HELICOPTERS

FAA N#	TY	MAKE/ MODEL	BASE	START	AVAIL	REMARKS	FAA N#	TY	MAKE/ MODEL	BASE	START	AVAIL	REMARKS
948CH	1	CH-47D	PVT	0800	0830	A-31	H520	2	205 A1 ++	Black rock	0800	0830	A-79
245CH	1	BV-234	PVT	0800	0830	A-53	H-522	2	205 A1 ++	Peppermint	0800	0830	A-123
135BH	1	S-70	PVT	0800	0830	A-76	H-523	2	205 A1 ++	Peppermint	0800	0830	A-11
699RH	1	KMAX	PVT	0800	0830	A-32	H-535	3	Bell 407	PVT	0800	0830	A-39
261CG	1	S-61	PVT	0800	0830	A-8							

10. TASK/ MISSION/ ASSIGNMENT (Type/ function includes: Air Tactical, Retardant, Recon, Personnel Transport, Bucket Operations, SAR, etc.)					
TYPE/FUNCTION	PRIORITY	NAME OF PERSONNEL OR CARGO (If applicable) or instructions for tactical aircraft	MISSION START	FLY FROM	FLY TO
ATGS		Provide continuous coverage over the fire as smoke and weather permits.	0900	PVT	Fire
Initial Attack		Initial Attack actions as requested inside of TFR	TBD	PVT/Peppermint	IA
Medevac		**See Medical Plan in IAP – Review during Division Breakouts**	TBD		Fire
Water Drops		As needed and approved by OPS, order through ATGS	0900	PVT	Fire
Recon		Fire reconnaissance by Ops as.	0900	PVT	Fire
PSD		As needed and approved by OPS	0900	PVT	Fire
OTHER		(Back Haul, Re-Supply, Crew Movement) Place all orders through communications	0900	Peppermint	Fire

Helibase, Dip Sites, Pick Up Sites, etc.	Helibase, Dip Sites, Pick Up Sites, etc.

Wind Restrictions			
Flights above ground level	Flight Permitted in Winds Less than / Maximum Gust Spread		
	Type 1 Helicopters	Type 2 Helicopters	Type 3 Helicopters
More than 500' AGL	<50kts / Gusts: N/A	<50kts / Gusts: N/A	<50kts / Gusts: N/A
Less than 500' AGL	<40kts / Max Gust Spread: 15kts	<40kts / Max Gust Spread: 15kts	<30kts / Max Gust Spread: 15kts

“I won't be wronged, I won't be insulted, and I won't be laid a hand on. I don't do these things to other people and I require the same from them”.
 -John Wayne

INCIDENT RADIO COMMUNICATIONS PLAN			Incident Name SQF COMPLEX			Date/Time Prepared 9/03/2020			Operational Period Date/Time 9/04/20 0600 9/05/20 0600		
Ch #	Function	Channel Name/Trunked Radio System Talkgroup	Assignment	RX Freq N or W	RX Tone/NAC	TX Freq N or W	Tx Tone/NAC	Mode A, D or M	Remarks		
1	CMD REPEATER	NIFC C4	DIV A/B/C/Y/Z	170.0000	151.4	166.6750	151.4	A	JORDON PEAK		
2	CMD REPEATER	NIFC C11	DIV L/N/U/X	170.6875	151.4	166.5750	151.4	A	SHERMAN PEAK		
3	CMD REPEATER	NIFC C31	DIV G/I/C/L	172.5500	151.4	162.1875	151.4	A	COYOTE PEAK		
4	FOREST REPEATER	SQF CH2	ALL/BACKUP	169.9000		165.7000	103.5	A	SQF FOREST RPTR DISPATCH		
5	TACTICAL CHNL	NIFC T1	DIV A/N/NIGHT	168.0500	151.4	168.0500	151.4	A	SQF TACTICAL		
6	TACTICAL CHNL	NIFC T3	DIV B/U	168.6000	151.4	168.6000	151.4	A	SQF TACTICAL		
7	TACTICAL CHNL	NIFC T5	DIV X/C	166.7250	151.4	166.7250	151.4	A	SQF TACTICAL		
8	TACTICAL CHNL	NIFC T6	DIV Y/I	166.7750	151.4	166.7750	151.4	A	SQF TACTICAL		
9	TACTICAL CHNL	NIFC T7	DIV Z/L/G	168.2500	151.4	168.2500	151.4	A	SQF TACTICAL		
10	TACTICAL CHNL	R5 T5	UNASSIGNED	167.1125	151.4	167.1125	151.4	A	SQF TACTICAL		
11	TACTICAL CHNL	R5 T6	NELSON/LLOYD	168.2375	151.4	168.2375	151.4	A	STRUCTURE TAC		
12	TACTICAL CHNL	VFIRE 25	POND/BLACK	154.2875	156.7	154.2875	156.7	A	STRUCTURE TAC		
13	AIR TO GROUND	A/G TAC	A/G TAC	172.3500		172.3500		A	A/G TAC		
14	AIR TO GROUND	A/G CMD	A/G CMD	169.1500		169.1500		A	A/G CMD OVERHEAD ONLY		
15	TACTICAL CHNL	CALCORD	MEDEVAC	156.0750	156.7	156.0750	156.7	A	CALCORD MEDEVAC		
16	AIR GUARD	AIR GUARD	EMCY ONLY	168.6250		168.6250	110.9	A	AIR GUARD		
Prepared by (Communications Unit) COMM UNIT 925.588.6879 / COM1 DUSTIN SENE 406.581.9027					Incident Location SEQUOIA NF County _____ State CA Latitude _____ N Longitude 3-7-77 W						

The convention calls for frequency lists to show four digits after the decimal place, followed by either an "N" or a "W", depending on whether the frequency is narrow or wide band. Mode refers to either "A" or "D" indicating analog or digital (e.g. Project 25) or "M" indicating mixed mode. All channels are shown as if programmed in a control station, mobile or portable radio. Repeater and base stations must be programmed with the Rx and Tx reversed.

MEDICAL PLAN (ICS 206 WF)

Controlled Unclassified Information//Basic

1. Incident/Project Name		2. Operational Period							
SQF Complex		Date/Time 09/04/20 0600hrs-09/05/20 0600hrs							
3. Ambulance Services									
Name	Complete Address	Phone & EMS Frequency	Advanced Life Support (ALS) Yes No						
Imperial Ambulance	28551 Hwy 190, Porterville, CA	559-687-3309	<input checked="" type="checkbox"/>	<input type="checkbox"/>					
Hall Ambulance	1001 21st St, Bakersfield	661-327-4111	<input checked="" type="checkbox"/>	<input type="checkbox"/>					
4. Air Ambulance Services									
Name	Phone	Type of Aircraft & Capability							
Kern County FD H408	657-464-7808	Incident Primary Air Rescue, Bell 205, ALS, 24/7 Hoist							
Skylife	800-305-5433	ALS, No Hoist, requires 100x100 LZ							
CHP H40 (Fresno)	559-262-0400	Air ambulance, ALS 24/7, DAY HOIST ONLY, NIGHT STAFFING ON CALL AFTER 1800 HRS							
5. Hospitals									
Name Complete Address	GPS Datum – WGS 84 Coordinate Standard Degrees Decimal Minutes DD° MM.MMM' N - Lat DD° MM.MMM' W - Long		Travel Time Air Gnd		Phone	Helipad Yes No		Level of Care Facility	
	Lat:	36 19.65°N	30 Min	2.5 Hr		559-624-2000	<input checked="" type="checkbox"/>		<input type="checkbox"/>
Kaweah Delta Health	Long:	119 17.676°W	45 min	3 hr	661-333-5194	<input checked="" type="checkbox"/>	<input type="checkbox"/>	Level 2 Trauma	
	VHF:	Click or tap here to enter text.							
	Lat:	35 22.95°N							1 hr
Long:	118 58.182°W								
VHF:	Click or tap here to enter text.								
Community Regional Medical Center	Lat:	36 44.568°N	1 hr	3 hr	559-459-6000 ER 559-459-4220	<input type="checkbox"/>	<input type="checkbox"/>	Level 1 Trauma/ Burn Center	
Kern Medical Center	Long:	119 47.094°W							
	VHF:	Click or tap here to enter text.							
6. Division Branch Group		Area Location Capability							
Div A/B	EMS Responders & Capability:	Ron Spellman, EMPF; John Sitar, EMP; Castle ambulance 3, REMS							
	Equipment Available on Scene:	ALS, ALS ambulance, Extrication equipment							
	Medical Emergency Channel:	Command							
	ETA for Ambulance to Scene:	Click or tap here to enter text.							
	Air:	30 min							
	Ground:	In division							
	Approved Helispot:	H1							
	Lat:	Click or tap here to enter text.							
	Long:	Click or tap here to enter text.							
Div Y/Z	EMS Responders & Capability:	Robert Abbruzzese EMPF; Patrick Garcia, EMTF							
	Equipment Available on Scene:	ALS							
	Medical Emergency Channel:	Command							
	ETA for Ambulance to Scene:	Click or tap here to enter text.							
	Air:	30 min							
	Ground:	15 min							
	Approved Helispot:	H1							
	Lat:	Click or tap here to enter text.							
	Long:	Click or tap here to enter text.							

MEDICAL PLAN (ICS 206 WF)

Controlled Unclassified Information//Basic

7. Name & Location	Remote Camp Location(s)		
<h2>Div X</h2>	EMS Responders & Capability:	Bryan Swenson, EMPF; Silas Fischer EMPF; Royce Copeman EMPF; Yoshimi Toyota EMPF	
	Equipment Available on Scene:	ALS	
	Medical Emergency Channel:	Command	
	ETA for Ambulance to Scene:	Click or tap here to enter text.	
	Air:	35 mins	
	Ground:	Air only	
	Approved Helispot:	H2	
	Lat:	Click or tap here to enter text.	
	Long:	Click or tap here to enter text.	
	<h2>Div L</h2>	EMS Responders & Capability:	Tommy Kabenaugh, EMPF; Matthew Heckman, EMPF; Scott Hamilton, EMPF; Steve DeVincenzi, EMTF
Equipment Available on Scene:		ALS	
Medical Emergency Channel:		Command	
ETA for Ambulance to Scene:		Click or tap here to enter text.	
Air:		35 mins	
Ground:		1 hr	
Approved Helispot:		Click or tap here to enter text.	
Lat:		Click or tap here to enter text.	
Long:		Click or tap here to enter text.	
<h2>Blackrock Backcountry</h2>		EMS Responders & Capability:	Castle Ambulance 2
	Equipment Available on Scene:	ALS Ambulance	
	Medical Emergency Channel:	Command	
	ETA for Ambulance to Scene:	Click or tap here to enter text.	
	Air:	35 mins	
	Ground:	1 hr	
	Approved Helispot:	Click or tap here to enter text.	
	Lat:	Click or tap here to enter text.	
	Long:	Click or tap here to enter text.	
	<h2>Night Div</h2>	EMS Responders & Capability:	Castle Ambulance 1
Equipment Available on Scene:		ALS Ambulance	
Medical Emergency Channel:		Command	
ETA for Ambulance to Scene:		Click or tap here to enter text.	
Air:		35 mins	
Ground:		1 hr	
Approved Helispot:		Click or tap here to enter text.	
Lat:		Click or tap here to enter text.	
Long:		Click or tap here to enter text.	
8. Prepared By (Medical Unit Leader)		9. Date/Time	10. Reviewed By (Safety Officer)
Emily Ellick-Flettire-405-593-3369	09/03/2020	SOF2 Gerald Vickers 443-614-4358	09/03/2020

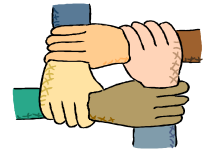
MEDICAL PLAN (ICS 206 WF)

Controlled Unclassified Information//Basic

Medical Incident Report					
FOR A NON-EMERGENCY INCIDENT, WORK THROUGH CHAIN OF COMMAND TO REPORT AND TRANSPORT INJURED PERSONNEL AS NECESSARY.					
FOR A MEDICAL EMERGENCY: IDENTIFY ON SCENE INCIDENT COMMANDER BY NAME AND POSITION AND ANNOUNCE "MEDICAL EMERGENCY" TO INITIATE RESPONSE FROM IMT COMMUNICATIONS/DISPATCH.					
Use the following items to communicate situation to communications/dispatch.					
1. CONTACT COMMUNICATIONS / DISPATCH (Verify correct frequency prior to starting report) <i>Ex: "Communications, Div. Alpha. Stand-by for Emergency Traffic."</i>					
2. INCIDENT STATUS: Provide incident summary (including number of patients) and command structure. <i>Ex: "Communications, I have a Red priority patient, unconscious, struck by a falling tree. Requesting air ambulance to Forest Road 1 at (Lat./Long.) This will be the Trout Meadow Medical, IC is TFLD Jones. EMT Smith is providing medical care."</i>					
Severity of Emergency / Transport Priority	<input type="checkbox"/> RED / PRIORITY 1 Life or limb threatening injury or illness. Evacuation need is IMMEDIATE <i>Ex: Unconscious, difficulty breathing, bleeding severely, 2° – 3° burns more than 4 palm sizes, heat stroke, disoriented.</i> <input type="checkbox"/> YELLOW / PRIORITY 2 Serious Injury or illness. Evacuation may be DELAYED if necessary. <i>Ex: Significant trauma, unable to walk, 2° – 3° burns not more than 1-3 palm sizes.</i> <input type="checkbox"/> GREEN / PRIORITY 3 Minor Injury or illness. Non-Emergency transport <i>Ex: Sprains, strains, minor heat-related illness.</i>				
Nature of Injury or Illness & Mechanism of Injury	Click or tap here to enter text.	<i>Brief Summary of Injury or Illness (Ex: Unconscious, Struck by Falling Tree)</i>			
Transport Request	Click or tap here to enter text.	<i>Air Ambulance / Short Haul/Hoist Ground Ambulance / Other</i>			
Patient Location	Click or tap here to enter text.	<i>Descriptive Location & Lat. / Long. (WGS84)</i>			
Incident Name	Click or tap here to enter text.	<i>Geographic Name + "Medical" (Ex: Trout Meadow Medical)</i>			
On-Scene Incident Commander	Click or tap here to enter text.	<i>Name of on-scene IC of Incident within an Incident (Ex: TFLD Jones)</i>			
Patient Care	Click or tap here to enter text.	<i>Name of Care Provider (Ex: EMT Smith)</i>			
3. INITIAL PATIENT ASSESSMENT: Complete this section for each patient as applicable (start with the most severe patient)					
Patient Assessment: See IRPG PAGE 106 Click or tap here to enter text.					
Treatment: Click or tap here to enter text.					
4. TRANSPORT PLAN:					
Evacuation Location (if different): (Descriptive Location (drop point, intersection, etc.) or Lat. / Long.) Patient's ETA to Evacuation Location: Click or tap here to enter text.					
Helispot / Extraction Site Size and Hazards: Click or tap here to enter text.					
5. ADDITIONAL RESOURCES / EQUIPMENT NEEDS:					
<i>Example: Paramedic/EMT, Crews, Immobilization Devices, AED, Oxygen, Trauma Bag, IV/Fluid(s), Splints, Rope rescue, Wheeled litter, HAZMAT, Extrication</i> Click or tap here to enter text.					
6. COMMUNICATIONS: Identify State Air/Ground EMS Frequencies and Hospital Contacts as applicable					
Function	Channel Name/Number	Receive (RX)	Tone/NAC *	Transmit (TX)	Tone/NAC *
COMMAND	Click or tap here to enter text.	Click or tap here to enter text.	Click or tap here to enter text.	Click or tap here to enter text.	Click or tap here to enter text.
AIR-TO-GRND	Click or tap here to enter text.	Click or tap here to enter text.	Click or tap here to enter text.	Click or tap here to enter text.	Click or tap here to enter text.
TACTICAL	Click or tap here to enter text.	Click or tap here to enter text.	Click or tap here to enter text.	Click or tap here to enter text.	Click or tap here to enter text.
7. CONTINGENCY: Considerations: If primary options fail, what actions can be implemented in conjunction with primary evacuation method? Be thinking ahead. Click or tap here to enter text.					
8. ADDITIONAL INFORMATION: Updates/Changes, etc. Click or tap here to enter text.					
REMEMBER: Confirm ETA's of resources ordered. Act according to your level of training. Be Alert. Keep Calm. Think Clearly. Act Decisively. Click or tap here to enter text.					



Human Resource Message



Hola Aloha Keesin Hello HEY HI

My role is also to be a focal point for informal resolution of issues and concerns. You may come to me with any question or concern about any aspect of your work environment while assigned to the incident. I am particularly committed to help assure resolution of issues as they arise, rather than waiting until after the incident is demobilized. High priority is given to resolving issues informally. If you are aware of inappropriate conduct, you have the right and the obligation to do something about it.

Right now, I am located at the Supervisor's Office in Porterville. Come see me or call me any time you have questions, concerns, or just want to chat.

*"A sense of humor is part of the art of leadership, of getting along with people, of getting things done."
Dwight Eisenhower*

Andrea Cabida, HRSP- 707-330-9939

Hi there!

09/04/2020

TENTATIVE RELEASE

CASTLE US-CA-SQF-002541

CREWS

C-2	0700	(HC2I)	BLACK EAGLES - 2
C-3	0730	(HC2)	BLACK EAGLES - 5
C-6	0800	(HC2)	COBRAS - 6

EQUIPMENT

E-110	0830	(ES3)	ENGINE S/T - T3 - 1521C (XSB)
--------------	-------------	--------------	--------------------------------------

OVERHEAD

O-218	0600	(SOF2)	PILOTTO, JEFFREY M
O-219	0600	(SOF2)	WORK, MICHAEL ALLAN
O-210	0700	(EMTF)	BUSBY, KYLE A
O-20.28	0715	(FACL)	CURLEY, ARTHUR
O-189	0730	(EMPF)	DAUNIS, SHANE
O-1	0745	(WFM2)	MODULE - SUPPRESSION -USFS -
O-247	0800	(REAF)	STEINWACHS, LINDSEY C

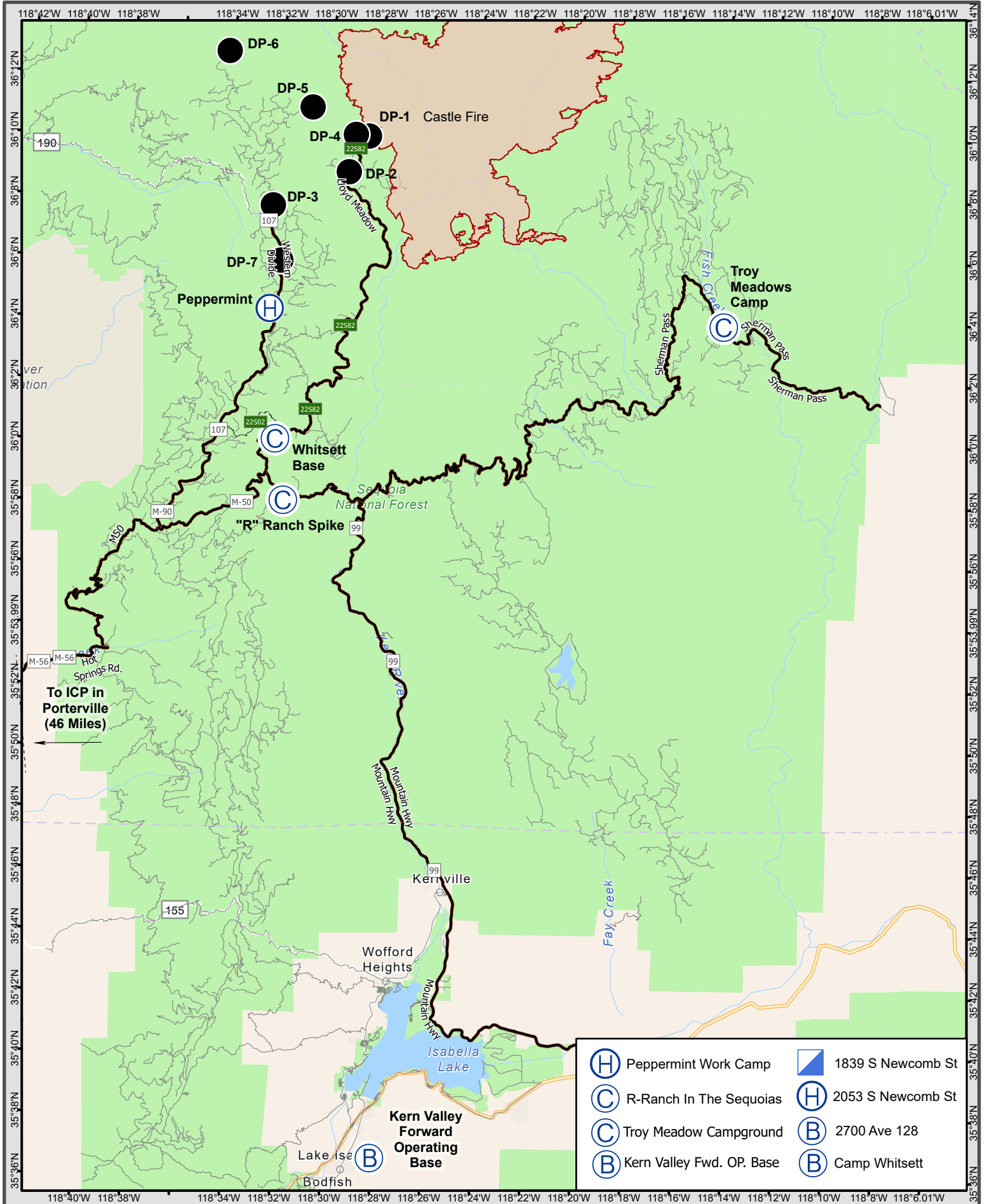


Northern Rockies Team 1

SQF COMPLEX

PHONE LIST

POSITION	NAME	MOBILE PHONE
SAFETY		
Safety Officer 1	Vicker Jr, Gerald W	443-614-4358
PUBLIC INFORMATION		
Public Information Officer 1	Smith, Jeannette M	406-544-7892
LIAISON		
Liaison Officer	Taylor, Robert L	406-554-4679
OPERATIONS		
Operations Section Chief 1	Olson, Brent H	406-249-4994
Line Ops	Schrenk, Scott	406-250-0354
PLANNING		
Planning Section Chief	Jermyn, Robin	406-360-5936
Planning Section Chief (t)	Carlin, Rob	406-249-1989
Deputy Planning Chief	Gump, Robert	850-688-7623
Status Check In	Heinsch, Faith Ann	406-370-8808
DEMOB	Murphy, Tanya	406-750-9805
LOGISTICS		
Logistics Section Chief 1	Showers, Charles	406-531-3691
Ordering Manager	Lind, Rita	406-291-3012
Supply Unit Leader	King, Josh	406-855-0984
Communications Unit Leader	Sene, Dustin	406-581-9816
COVID-19 Medical	Gaul, Roylene	406-381-6888
FINANCE		
Finance Section Chief 1	Schrenk, Amy	406-830-5214



TRANSPORTATION SQF Complex Sept 4, 2020

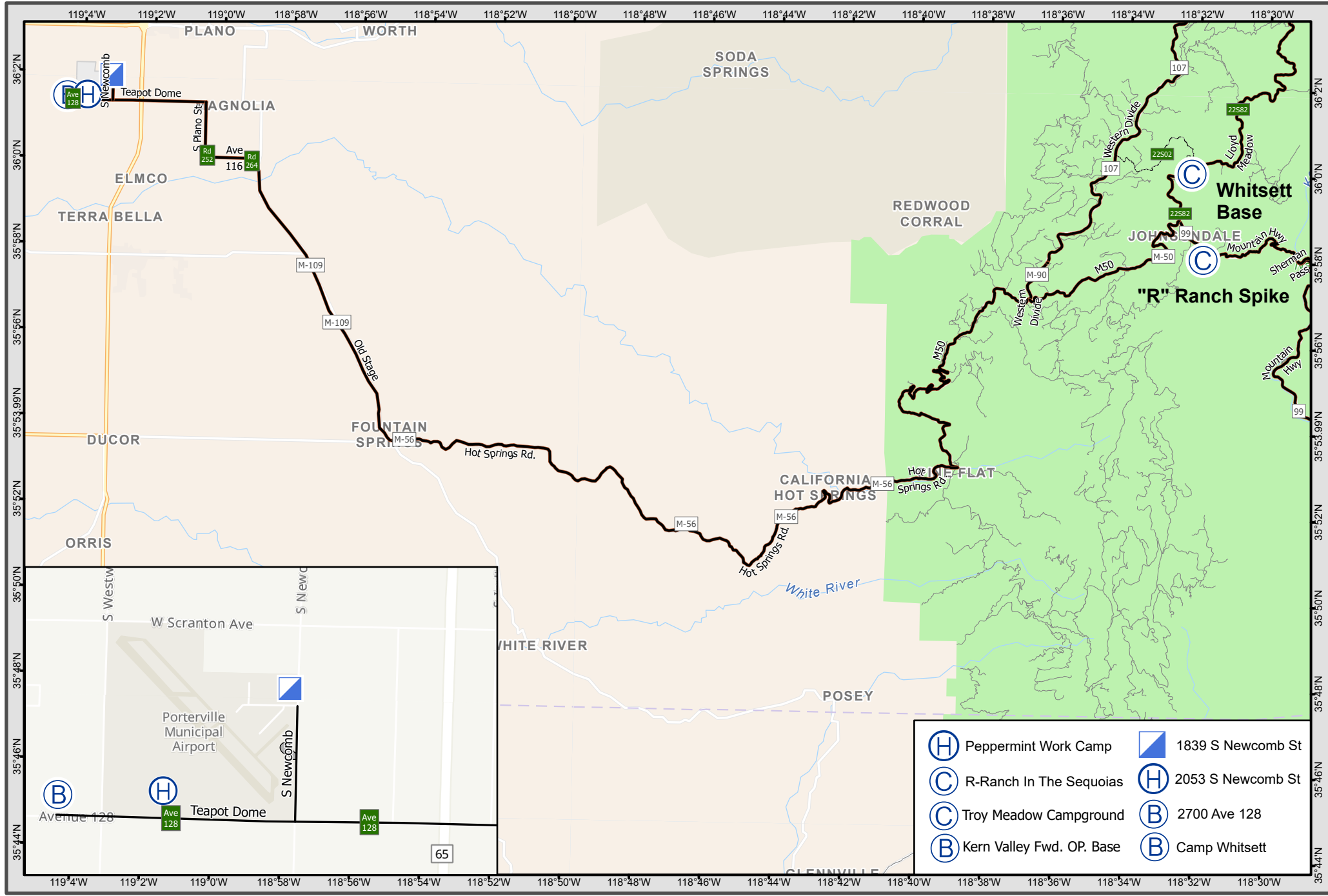
East Transportation Map
SQF Complex
CA-SQF-002622



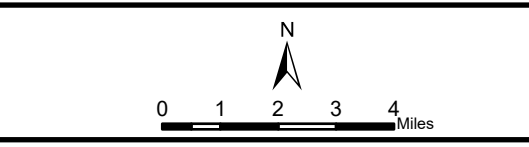


TRANSPORTATION SQF Complex
Sept 4, 2020

0 1 2 4 Miles



TRANSPORTATION
SQF Complex
Sept 4, 2020



West Transportation Map

SQF Complex

CA-SQF-002622

- (H) Helibase
- (B) Incident Base
- Incident Command Post



TRANSPORTATION
SQF Complex
Sept 4, 2020

