

Incident Action Plan

SQF Complex

CA-SQF-002622

P5NG2P (0513)

VALUES AT RISK

Firefighters and Public Safety

Communities

- Ponderosa, Camp Nelson, Pyles Boys Camp, Rogers Camp, Sequoia Crest, Cedar Slope, Mountain Aire, and Coy Flat

Infrastructure

- Osa Meadows, USGS seismic station, high recreation areas, campgrounds, trailheads and facilities.

Natural Resources and Cultural Values

- Giant Sequoia Groves, Freeman Grove, Little Kern Golden Trout, Mountain Yellow Legged Frog, and Sierra Nevada Bighorn Sheep Habitats
- Wilderness Values
- Archaeological and Cultural Resources
- Waterways and Riparian Areas



OPERATIONAL PERIOD
Saturday September 5, 2020
Sunday September 6, 2020
0600 to 0600



INCIDENT OBJECTIVES	1. Incident Name SQF COMPLEX	2. Date Prepared 9/4/2020	3. Time Prepared 1800
	4. Operational Period		
September 5, 2020 to September 6, 2020		Time: 0600-0600	
5. General Control Objectives for the Incident			
<ul style="list-style-type: none"> Limit growth of the Castle Fire by establishing a holding line that is safe for firefighters and offers high probability of success to keep the fire: <ul style="list-style-type: none"> North of Durr Wood Camp South of Sequoia Kings Canyon Wilderness Boundary East of Highway 190 to Summit Trail West of Toowa Range to King Fisher Ridge to 22S05 Road Monitor the spread/growth of the Shotgun Fire using air operation assets. Protect and minimize impacts to identified values at risk including the communities of Ponderosa, Camp Nelson, Pyles Boys Camp, Rogers Camp, Cedar Slope, Sequoia Crest, Mountain Aire, and Coy Flat, as well as Freeman Giant Sequoia Grove, Osa and Beck Meadows, trailheads and facilities. Coordinate with the Sequoia NF Duty Officer on support to any new initial attack. 			
6. Management Objectives			
<ul style="list-style-type: none"> Implement suppression actions that have a high potential for success, carefully weighing risk exposure to firefighters. Provide for the safety of firefighters, aviation and public through clear communication. Ensure an understanding of strategies and tactics, including a clearly defined and obtainable end state, in order to facilitate sound risk mitigation decision making. Implement social distancing and adhere to the "module of one" concept to reduce physical exposure and transmission of COVID-19, to provide for the health and safety of all incident personnel. Minimize to the extent feasible smoke exposure to firefighters, communities and other affected areas to reduce susceptibility to the consequences from COVID-19 exposure. Maintain and strengthen relationships with partner agencies, stakeholders, cooperators, community leaders, and local agencies utilizing most effective platforms available. Minimize adverse effects from suppression actions on riparian areas, wetlands, Little Kern Golden Trout, Mountain Yellow Legged Frog, and Sierra Nevada Bighorn Sheep habitats. Minimize impacts to Wilderness areas; use minimum impact suppression tactics (MIST) by utilizing trails, streams, ridges and natural barriers when possible for control lines. 			
7. Commander's Intent			
<ul style="list-style-type: none"> Safety: Address fire fighter, public, and aviation safety through hazard/exposure mitigation. Communication: We will keep the Agency Administrators informed of significant accomplishments and issues. Risk Management: We will use a robust risk assessment process to mitigate unnecessary risk to fire fighters and update and/or revise decisions as necessary. Human Resources: We will ensure that all incident personnel be treated with dignity and respect. We have a zero tolerance for harassment, alcohol, or illegal drug use. Operations: We will make informed tactical decisions engaging the fire in the right locations with the appropriate resources. Public Information: We will provide timely and accurate information through the press, meetings, trap lines, briefings, and social media. Stakeholders: We will coordinate with the delegating agencies to identify key partners and keep them effectively informed of progress and to use their local knowledge. Finance: We will establish and monitor cost effective methods for accomplishing incident objectives. 			
8. ATTACHMENTS (X IF ATTACHED)			
[X] Organization List - ICS 203		[X] Medical Plan - ICS 206	[] _____
[X] Division Assignment Lists - ICS 204		[X] Unit Log 214	[] _____
		[X] WF206 9 Line	[] _____
9. Prepared By (Planning Section Chief)		10. Approved By (Incident Commander)	
Rob Carlin PSC1 (t)		Michael Goicoechea IC	

ORGANIZATION ASSIGNMENT LIST				Operations Section	
1. Incident Name		SQF Complex		Field Operations	Scott Schrenk, Andy James (t)
2. Date Prepared	9/4/2020	3. Time Prepared	1700	Planning Operations	Brent Olson 406.249.4994, Shawn Borgen (t)
4. Operational Period				Branch I Director	Justin Kaber
September 5, 2020 to September 6, 2020 0600 to 0600				Branch V Director	Ryan Butler / Logan Sanders (t)
Incident Commander and Staff				Structure Branch	Drew Daily
Incident Commander	Mike Goicoechea			Branch I	
Deputy	Mark Goeller, Greg Poncin			Alpha	Kate Airhart
Safety Officer	Gerald Vickers 443.614.4358			Bravo	Rocky Wagoner
Information Officer	Jeannette Smith 406.544.7892			Charlie	Unstaffed
Liaison Officer	Rob Taylor 406.544.4679			Golf	Unstaffed
Medical Section Chief				Yankee - Zulu	Isaac Naylor
Agency Representative				Branch V	
SQF AA	Constance Cummins			India	Unstaffed
SQF AR	Al Watson			Lima	Mike King
SQF READ	Josh Courter 559-920-7023			November	Unstaffed
INF AR	David Andersen			Uniform	Unstaffed
INF AA	John (Pancho) Smith			X-ray	Stryker Clark
INF READ	Adam Barnett 760.920.8104				
SEKI AA	Lee Taylor			Structure	
SQF Chief 1	Angie Sanchez-Hand			Black Rock / Backcountry	Geoff Farinholt
Sequoia & Kings NPS	Dan Morford			Lloyd	Bryan Duffy
Tulare Co FD	Jeff McLaughlin			Nelson	Hunter Seaborn Bell, III
SoCAL Edison	Troy Whitman			Ponderosa	Brad Allen
CHP	Chad Patton				
Tribal Liaison	Dirk Charley			Night	
Tule River Tribe	Zane Santos			Night	Mark Brown
Planning Section					
Section Chief	Robin Jermyn 406.360.5936 Rob Carlin (t)				
Deputy	Rob Gump 850.688.7623				
Situation Unit	Cameron Rasor 406.491.0351 Morganne Lehr (t)				
Demobilization Unit	Tanya Murphy 406.750.9805				
Resources Unit Leader	Anya Moline 406.366.1979 Anthony Watts (t)				
Status Check-in	Faith Anne Heinsch 406.370.8808				
Fire Behavior Analyst	Brian Anderson 406.660.0450 David Greathouse Lauren Blake (t)			Air Operations Branch	
Long-Term Analyst	Lawen Hollingsworth 406.552.5440 Alicia Reiner (t)			Air Operations Branch Director	Dennis Morton 406.660.2318
GIS Specialist	Erin Heiselmann 406.546.4014 Nate Meyer 307.761.1541 McIntyre Murphy (t)			Air Support Group Supervisor	Daniel Sepulveda
Computer Specialist	Tim McCracken 406.407.3152			Air Tactical Group Supervisor	Tony Duprey
Meteorologist	Andrew Gorelow			Finance Section	
Human Resource	Andrea Cabida 707.330.9939			Section Chief	Amy Schrenk 406.830.5214
Documentation Unit	Jenny Rechel			Time Unit	Marta Lujan 970.275.3120
SOPL	Roy Hall			Equipment Time	Lynda Pike 406-382-0086
Training Specialist	Heather Grove 530.394.8076			Personnel Time	Tama Lester 580.212.1017
Logistics Section				Cost Unit	Khon Viengkham 703.217.7269
Section Chief	Charlie Showers 406.370.3787 Leroy Evans (t)			Procurement Unit Leader	Dana Bangart 406.360.0029
Ordering Manager	Rita Lind 406.291.3012			Comps / Claims	Leon Augustine 406.363.8956 Shannon Maxwell 406.366.3724
Supply Unit	Brent Elmore 605.641.0771			IBA	Nancy Gibson
Facilities Unit	James Andruzzi 917-443-2556				
Base Camp	Patrick Beers 253.318.7992				
Ground Support Unit	Keith Windell 406.531.2987				
Communications Unit	Dustin Sene 406.531.2987			Prepared by:	Anya Moline - RESL
Communications Tech	Trent Coppinger 406.581.9027				
Medical Unit	Emily Ellick-Flettire 405.593.3369				



SAFETY MESSAGE



Fire fighter safety comes first on every fire, every time

Major Hazards and Risks:

MULTI-TASKING: When You Turn the vehicle On, Turn the Gadgets Off. No matter how busy your day is, when you're on the road, focus only on defensive driving. Catch up on other activities later and avoid driving accidents.

CUMULATIVE FATIGUE: This is starting to be a very active fire season with folks working long hours on back-to-back Assignments. This can lead to serious cumulative fatigue. Monitor yourself, your subordinates, and others. Take frequent short rest breaks, eat balanced meals, and get as much quality sleep as possible. Fatigue can cause us to mentally stray from the assigned work task and or driving task.

MEDICAL EMERGENCIES: Do you know what to do in case of a medical emergency? Review Medical Plan (ICS 206) and become familiar with the 8 Line: "Line Emergencies" procedures checklist. Your actions may be what saves a life. Make yourselves known to your Line Medical Personal. Pay attention to where medical resources move through out the day and make note of the drive times and plan accordingly.

SPAN OF CONTROL: Refers to the number of individuals or resources that one supervisor can manage effectively during an incident. Experience has shown that an effective **span of control** for a supervisor in an incident is three to seven people. If you find yourself needing help, ask for help. When resources are in short supply our span of control can become exceeded. Help is not always available. Changing our ***expectations*** and ***operational tempo*** may need to be considered. Every situation is different. Have a discussion with your resources and find out their comfort level. Communicate your needs both up and down the chain of command, often, a solution can be found with a simple discussion.

Aviation Awareness:

- Good communication with aircraft
- Approved Heli spots known and ready
- No trash in Helispot landing areas
- Watch for rotor wash on tank or bucket drops
- Trained Longline Personnel for crew cargo
- Medical Emergency Hoist Operations Lat/Long
- Aerial Retardant stay clear and watch for rolling rocks, tree limbs and tops
- Paracargo Operations make known where the drop zone is and stay clear of drop zone area



FIRE WEATHER FORECAST



FORECAST NO: 12
PREDICTION FOR: Sept. 5 - Sept. 6, 2020 0600-0600

INCIDENT NAME: SQF Complex
UNIT: CA-SQF
SIGNED: *Andrew Gorelow*

TIME AND DATE
FORECAST ISSUED: Fri, Sep 4 @ 2000 hours

Incident Meteorologist – Andrew Gorelow

WEATHER DISCUSSION: High pressure building into the region will lead to hot and dry conditions into the weekend, with more unstable conditions. Winds in the morning expected to be northwest to north 2 to 4 mph. The inversion is expected to lift between 1000 and 1100 with increasing southeast to south winds 5 to 10 mph gusting to 20 mph. A few more clouds expected over the Sierra Crest in the afternoon. After 1600, look for winds to shift to the southwest to west with speeds 5 to 10 mph gusts to 20 mph. Winds will continue to be heavily impacted by local terrain. Temperatures will be in the 80s to lower 100s. Poor overnight RH recoveries. Unstable conditions will last through Monday.

SKY/WEATHER TODAY (SATURDAY): Hot, dry, and more unstable. More clouds expected over the higher terrain. Valley inversions lifting by 1000. Morning downslope/downvalley winds 2 to 4 mph will turn southeast to south after 1000 with speeds 5 to 10 mph with occasional gusts to 20 mph. A southwest to west wind push is expected in the afternoon after 1600 with winds 4 to 9 gusts to 20 mph. Winds will be heavily affected by the local terrain.

MAX TEMPERATURES / MIN RELATIVE HUMIDITY:

5000 FT: 95 to 100 degrees (Up 1-2 Degrees) / 8 to 13% (Down 1-2%)
7000 FT: 85 to 90 degrees (Up 1-2 Degrees) / 12 to 17% (Little Change)

EYE LEVEL WINDS:

Slope/Valley: North to northeast drainage winds up to 4 mph through 1000. Inversions lifting by 1100. Wind shifting to the southeast 5 to 10 mph gusts to 20 mph. Winds becoming southwest to west with gusts up to 20 mph after 1500. Winds will continue to be heavily impacted by local terrain.

Ridges: South to southwest east 5 to 10 mph gusts to 15 mph.

MIXING HEIGHT...12,500 FT AGL **VENTILATION...**Good.

TRANSPORT WIND...Northeast around 5 mph in the morning, shifting to the south in the afternoon 10 to 15 mph.

CWR (0.10")...0% **LAL...**1 **HAINES...**5

SKY/WEATHER TONIGHT (SATURDAY NIGHT): Smoky. Inversions developing by 2200. Winds becoming drainage 3 to 5 mph after 2000 but could remain squirrely near the confluence of the Little Kern/Kern Rivers. Northeast to east winds 5 to 10 mph possible over the higher ridges. Overnight RH recoveries will remain poor.

MIN TEMPERATURES / MAX RELATIVE HUMIDITY

5000 FT: 55 to 60 degrees (Little Change) / 30 to 40% (Little Change)
7000 FT: 66 to 71 degrees (Up 1-3 degrees) / 23 to 28% (Down 1-3%)

EYE LEVEL WINDS:

Slope/Valley: Northwest to north drainage winds 2 to 5 mph.

Ridges: Northeast to east 5 to 10 mph.

CWR (0.10")...0% **LAL...**1 **HAINES...**5

SUNDAY: Inversion lifting by 1000 with southeast to south winds increasing to 5 to 10 mph with gusts to 20 mph. Partly cloudy in the afternoon. Slightly warmer temperatures and lower RH. Conditions will remain unstable in the afternoon.

Max Temps: 86 to 103. **Min RH:** 7 to 15%. **Winds:** Morning drainage winds becoming southeast to south 5 to 10 mph with gusts to 20 mph. Becoming southwest to west with gusts to 20 mph after 1500.

LAL: 1 **CWR (0.10"):** 0% **MIXING HEIGHT:** 12,500 FT AGL **HAINES:** 5

OUTLOOK for MONDAY and TUESDAY:

Weather: Mostly sunny with a few clouds over the higher terrain Monday. Southeast to south winds into early afternoon, but winds are expected to increase from the west to northwest in the afternoon with winds 10-20 mph. Continued very hot. **High Temp:** 83-97 **Min RH:** 8-18% **CWR:** 0% **LAL:** 1 **Wind:** West to northwest 5 to 15 mph.

FIRE BEHAVIOR FORECAST

FORECAST NUMBER: 15	TYPE OF FIRE: Wildland
FIRE NAME: SQF Complex	OPERATIONAL PERIOD: 9/5/2020: 0600-0600
DATE ISSUED: September 4, 2020	TIME ISSUED: 1800
UNIT: CA-Sequoia National Forest	SIGNED: /s/ David Greathouse FBAN/ Lauren Blake FBAN(t)

WEATHER SUMMARY

****Another Hot, Dry and Unstable Day****
(See Weather forecast for details)

Weather thresholds for large fire growth: Temp: >83 deg, RH <20%, 20ft winds >7mph

FIRE BEHAVIOR

GENERAL

Fuels- Fuels involved in the Castle Fire are primarily Fire Behavior Fuel Models (FBFM) timber litter and understory (TU5) in areas without recent fire history, and a mix of grass (GR2) and brush (GS2) in burn scars less than 20 years old. The Shotgun Fire is higher elevation and does not have recent fire history in its current footprint and is more represented by a grass shrub (GS2) moderate timber litter (TL6). Fuels are very dry for this time of year. The ERC is currently near the 97th percentile, and the 100- and 1000-hour fuels are at 7% and 9%. At these values, all dead fuels are available for consumption.

Topography- Topography in the fire area is dominated by the Kern River. This river drainage runs north/south and is steep and narrow, roughly bisecting the fire area down the middle. Terrain has played a central role in fire spread, taking the predominantly SW flow and directing it in every way imaginable across the fire area.

Parameters for Behave Run: 1hr:4, 10hr:5, 100hr:7 Temp: 85 Slope avg: 30%

	Max Rate of Spread	Max Flame Lengths	Spotting Distances	POI
GR2	100-120 ch/hr.	6-10'	½ mi	80%
GS2	70-80 ch/hr.	6-10'	½ mi	80%
TU5	22-28 ch/hr.	10-13'	½ mi	100%
TL6	12-18 ch/hr.	3-6'	¼ mi	80%

SPECIFIC

All Divisions: Expect increase in fire behavior with forecasted increase instability and temperatures today. Expect active surface fire along with single tree and group tree torching. Spotting is likely today as probability of ignition in all fuel models are above 75%. Expect burning to increase around 1100, peak around 1600, before moderating after sunset.

Div A/B – The southerly winds up the Kern Canyon along with the terrain features will have a big effect on your fire today. These effects will continue to move you fire west through the click creek drainages. Spotting is likely. **Be heads up!** The fire has the potential to move south into the Freeman Creek Sequoia Grove.

Div Y/Z – With today's forecasted temperatures and instability, any undetected spot fires could become established quickly.

Div X/U – As you progress with direct attack tactics, be heads up for any roll out that occurs. These could cause short, uphill runs back into the burn.

Div N – The fire will continue to move west today, potentially impacting Beach Meadows to the west by the end of the shift.

Shotgun Fire The fire slowly continues to progress to the drainages and find available fuel. If the fire finds its way across the creek bottom, expect a slope reversal and short terrain/ wind aligned runs

AIR OPERATIONS

Smoke should lift around 1100 to support air missions.

SAFETY

Make sure LCES is in place before engaging the fire! L, C, E, and S are the key operational actions that are in the Fire Orders.

DIVISION ASSIGNMENT LIST				Branch		Division/Group			
Incident Name				I		ALPHA			
SQF Complex				Operational Period					
				Date: 9/5/2020 to 9/6/2020		Time: 0600-0600			
Operations Personnel									
Operations Chief		Brent Olson, Scott Schrenk Andy James (t) Shawn Borgen (t)		Branch Director			Justin Kaber 406-250-1455		
Air Operations		Dennis Morton Dan Sepulveda		Division/Group Supervisor			Kate Airhart 406-360-0506		
Safety Officer		Gerald Vickers Dan Cassidy							
Resources Assigned This Period									
Strike Team/Task Force/ Resource Designator		Req#	Last Shift	Leader		# Persons	Drop Off Point /Time		Pick Up Point / Time
HC1 Fulton		C-67	9/15	Josh Acosta		20	Whitsett Base 0600		Whitsett Base 2100
HC1 Vista Grande		C-54	9/12	Jess Estrada		19	Whitsett Base 0600		Whitsett Base 2100
WFM Sequoia		O-266	9/12	Aaron Woodyard		8	Whitsett Base 0600		Whitsett Base 2100
HC2 Scorpions 3		C-13	9/8	Dileep Bobba		22	Whitsett Base 0600		Whitsett Base 2100
TFLD		O-259	9/11	Isaac Solomon		1	Whitsett Base 0600		Whitsett Base 3100
TFLD (t)		O-336	9/14	Scott Turner		1	Whitsett Base 0600		Whitsett Base 2100
HEQB		O-415	9/14	Joshua Perkins		1	Whitsett Base 0600		Whitsett Base 2100
ENG6 High Desert		E-137	9/12	Thomas Hanks		3	Whitsett Base 0600		Whitsett Base 2100
ENG6 Red Dog		E-167	9/12	Tim England		2	Whitsett Base 0600		Whitsett Base 2100
WT2 K&B		E-48	9/7	Mike Morgan		1	Whitsett Base 0600		Whitsett Base 2100
WT2 Angulo		E-89	9/11	Albert Angulo		1	Whitsett Base 0600		Whitsett Base 2100
WT2 CNF WT222		E-145	9/12	Andrew Peterson		2	Whitsett Base 0600		Whitsett Base 2100
SKG2 Alvord Fire		E-180	9/16	Justin Davis		1	Whitsett Base 0600		Whitsett Base 2100
SKG2 Alvord Fire		E-194	9/16	Bernard Saul		2	Whitsett Base 0600		Whitsett Base 2100
DOZ2 Westlund		E-139	9/12	Alan Westlund		2	Whitsett Base 0600		Whitsett Base 2100
DOZ2 ANF 12		E-142	9/10	Doug Lander		2	Whitsett Base 0600		Whitsett Base 2100
EXC2 Sandborg		E-179	9/13	Chuck Sandborg		2	Whitsett Base 0600		Whitsett Base 2100
EXC2 Denis Equip		E-188	9/15	Anthony Pezzi		2	Whitsett Base 0600		Whitsett Base 2100
GRD2 Kirklang		E-97	9/9	Todd Adams		2	Whitsett Base 0600		Whitsett Base 2100
CHIP1 Wyeas Forestry		E-192	9/16	Ryan Grigsby		2	Whitsett Base 0600		Whitsett Base 2100
FALM Tree Guys		O-178	9/9	Chase Bishop		2	Whitsett Base 0600		Whitsett Base 2100
SOFR (t)		O-171	9/8	Eric Klemowicz		1	Whitsett Base 0600		Whitsett Base 2100
SOFR		O-183	9/10	Joseph Fowler		1	Whitsett Base 0600		Whitsett Base 2100
EMPF		O-340	9/8	Ron Spellman		1	Whitsett Base 0600		Whitsett Base 2100
EMPF		O-341	9/8	John Sitar		1	Whitsett Base 0600		Whitsett Base 2100
REMS		O-332	9/13	REMS		1	Whitsett Base 0600		Whitsett Base 2100
REAF		O-50	9/6	Ernest Wingate		1	Whitsett Base 0600		Whitsett Base 2100
REAF		O-277	9/11	Scott Dailey		1	Whitsett Base 0600		Whitsett Base 2100
REAF (t)		O-395	9/17	Ian Woodruff		1	Whitsett Base 0600		Whitsett Base 2100
REAF (t)		O-398	9/17	Noah Hirsch		1	Whitsett Base 0600		Whitsett Base 2100
Work Assignments									
<p>Task: Evaluate fire progression to the west in Bravo and develop and implement tactics to prevent spread outside of the wilderness to the south. Hold the current fire perimeter and construct direct line as appropriate between 31E14 trail and Jerky Meadow. Construct line from Jerky Meadow to Div A / Z break.</p> <p>Purpose: Keep the fire spread east of Lloyd Meadow Road, north of Ponderosa and Mountain Home community</p> <p>End State: Limit fire spread into additional values at risk to protect communities and infrastructure.</p>									
Special Instructions									
<ul style="list-style-type: none"> Personnel to notify DIVS of potentially sensitive cultural materials. Castle Ambulance 1 staged at Whitsett Base Camp. Castle Ambulance 2 stage at R Ranch Spike. Castle REMS available to all DIVS. Prioritization of all control or containment actions taken during the operational period in this Division will be at the discretion of the DIVS. Actions may have to be taken by the DIVS that are not enumerated in today's IAP. These actions would be a result of a significant change in actual or expected fire behavior over and above that anticipated at the time the IAP was prepared. These actions will be coordinated with and approved by the OSC whenever possible. 									
Division/Group Communication Summary									
Function	Channel	Frequency RX	Frequency TX	TONE RX	TONE TX	Function	Channel	Frequency RX	Frequency TX
COMMAND	1	170.0000	166.6750	151.4	151.4	A/G TAC	13	172.3500	172.3500
NIFC T1	5	168.0500	168.0500	151.4	151.4	A/G CMD	14	169.1500	169.1500
Prepared by Anya Moline – RESL		Approved By Robin Jermyn - PSC				Date 9/4/2020		Time 1800	

DIVISION ASSIGNMENT LIST				Branch		Division/Group			
Incident Name				I		YANKEE / ZULU page 1 of 2			
SQF Complex				Operational Period					
				Date: 9/5/2020 to 9/6/2020			Time: 0600-0600		
Operations Personnel									
Operations Chief		Brent Olson, Scott Schrenk Andy James (t) Shawn Borgen (t)			Branch Director		Justin Kaber 406-250-1455		
Air Operations		Dennis Morton Dan Sepulveda			Division/Group Supervisor		Isaac Naylor		
Safety Officer		Gerald Vickers Dan Cassidy							
Resources Assigned This Period									
Strike Team/Task Force/ Resource Designator		Req#	Last Shift	Leader	# Persons	Drop Off Point /Time	Pick Up Point / Time		
HC1 Dalton		C-53	9/11	Scott Gorman	19	Whitsett Base 0600	Whitsett Base 2100		
WFM Groveland		O-186	9/9	Timothy Markin	8	Whitsett Base 0600	Whitsett Base 2100		
ENG3 STF-314		E-60	9/8	Ron Plummer	5	Whitsett Base 0600	Whitsett Base 2100		
ENG3 A1Fire E13		E-79	9/11	Wyatt Lawrence	2	Whitsett Base 0600	Whitsett Base 2100		
ENG4 Troy		E-134	9/12	Dan Hokanson	3	Whitsett Base 0600	Whitsett Base 2100		
ENG6 Buffalo		E-132	9/13	Gregg Webster	3	Whitsett Base 0600	Whitsett Base 2100		
ENG6 Flame Chaser		E-133	9/14	Duane Many Hides	3	Whitsett Base 0600	Whitsett Base 2100		
ENG6 R Construction		E-166	9/12	Richard Deroche	3	Whitsett Base 0600	Whitsett Base 2100		
WT2 Dust Busters		E-49	9/10	Nathan Stutz	2	Whitsett Base 0600	Whitsett Base 2100		
WT2 49ERS		E-50	9/10	Steve Smith	1	Whitsett Base 0600	Whitsett Base 2100		
WT2 Valley Farms		E-88	9/8	Jeff Bates	1	Whitsett Base 0600	Whitsett Base 2100		
WT2 SQF WT2		E-114	9/9	Jaime Ayaly	2	Whitsett Base 0600	Whitsett Base 2100		
WT2 Central 25		E-146	9/13	Jeff Nevins	2	Whitsett Base 0600	Whitsett Base 2100		
DOZ2 Shannon Bros.		E-44	9/7	Bill Shannon	1	Whitsett Base 0600	Whitsett Base 2100		
DOZ2 Shannon Bros.		E-45	9/7	John Shannon	1	Whitsett Base 0600	Whitsett Base 2100		
DOZ2 Conner		E-83	9/8	Tim Conner	1	Whitsett Base 0600	Whitsett Base 2100		
DOZ2 STF 51		E-118	9/6	Mike Nott	2	Whitsett Base 0600	Whitsett Base 2100		
FALM Timbersmith		O-176	9/9	Keenan Smith	2	Whitsett Base 0600	Whitsett Base 2100		
FALM Timbersmith		O-177	9/9	Ryan Deniz	2	Whitsett Base 0600	Whitsett Base 2100		
Work Assignments									
<p>Task: Construct direct line from the Div Z / A break along the Castle Mountain ridge to Kern Canyon from the Div Z / Y break to the river's edge, burning out as necessary to prevent fire spread to the west toward values at risk. Mop up as appropriate with firefighter safety in consideration.</p> <p>Purpose: Limit fire spread toward values at risk on the west side of the fire.</p> <p>End State: Private property and infrastructure is protected, natural resource impacts are limited, and there are no accidents or injuries to firefighters or the public.</p>									
Special Instructions									
<ul style="list-style-type: none"> Personnel to notify DIVS of potentially sensitive cultural materials. Castle Ambulance 1 staged at Whitsett Base Camp. Castle Ambulance 2 stage at R Ranch Spike. Castle REMS available to all DIVS. Crews be prepared to spike. Prioritization of all control or containment actions taken during the operational period in this Division will be at the discretion of the DIVS. Actions may have to be taken by the DIVS that are not enumerated in today's IAP. These actions would be a result of a significant change in actual or expected fire behavior over and above that anticipated at the time the IAP was prepared. These actions will be coordinated with and approved by the OSC whenever possible. 									
Division/Group Communication Summary									
Function	Channel	Frequency RX	Frequency TX	TONE RX	TONE TX	Function	Channel	Frequency RX	Frequency TX
COMMAND	1	170.0000	166.6750	151.4	151.4	A/G TAC	13	172.3500	172.3500
NIFC T6	8	166.7750	166.7750	151.4	151.4	A/G CMD	14	169.1500	169.1500
Prepared by Anya Moline – RESL		Approved By Robin Jermyn – PSC				Date 9/4/2020		Time 1800	

This page intentionally left blank



DIVISION ASSIGNMENT LIST				Branch		Division/Group			
Incident Name				I		YANKEE / ZULU page 2 of 2			
SQF Complex				Operational Period					
				Date: 9/5/2020 to 9/6/2020		Time: 0600-0600			
Operations Personnel									
Operations Chief	Brent Olson, Scott Schrenk, Andy James (t) Shawn Borgen (t)			Branch Director		Justin Kaber 406-250-1455			
Air Operations	Dennis Morton Dan Sepulveda			Division/Group Supervisor		Isaac Naylor			
Safety Officer	Gerald Vickers Dan Cassidy								
Resources Assigned This Period									
Strike Team/Task Force/ Resource Designator	Req#	Last Shift	Leader	# Persons	Drop Off Point /Time	Pick Up Point / Time			
SOFR	O-389	9/16	James Gregory	1	Whitsett Base 0600	Whitsett Base 2100			
SOFR (t)	O-234	9/12	Dwayne Johnson	1	Whitsett Base 0600	Whitsett Base 2100			
SOFR (t)	O-270	9/14	Philip Bordelon	1	Whitsett Base 0600	Whitsett Base 2100			
EMPF	O-92	9/6	Robert Abbruzzese	1	Whitsett Base 0600	Whitsett Base 2100			
EMTF	O-579	9/17	Patrick Garcia	1	Whitsett Base 0600	Whitsett Base 2100			
AMBU	E-170	9/13	Castle 3	1	Whitsett Base 0600	Whitsett Base 2100			
REAF	O-141	9/7	Marcos Rios	1	Whitsett Base 0600	Whitsett Base 2100			
REAF	O-228	9/12	Michael Mcgraw	1	Whitsett Base 0600	Whitsett Base 2100			
REAF	O-229	9/12	Lanny Flaherty	1	Whitsett Base 0600	Whitsett Base 2100			
REAF	O-231	9/11	Donna Peppin	1	Whitsett Base 0600	Whitsett Base 2100			
Work Assignments									
<p>Task: Construct direct line from the Div Z / A break along the Castle Mountain ridge to Kern Canyon from the Div Z / Y break to the river's edge, burning out as necessary to prevent fire spread to the west toward values at risk. Mop up as appropriate with firefighter safety in consideration.</p> <p>Purpose: Limit fire spread toward values at risk on the west side of the fire.</p> <p>End State: Private property and infrastructure is protected, natural resource impacts are limited, and there are no accidents or injuries to firefighters or the public.</p>									
Special Instructions									
<ul style="list-style-type: none"> Personnel to notify DIVS of potentially sensitive cultural materials. Castle Ambulance 1 staged at Whitsett Base Camp. Castle Ambulance 2 stage at R Ranch Spike. Castle REMS available to all DIVS. Prioritization of all control or containment actions taken during the operational period in this Division will be at the discretion of the DIVS. Actions may have to be taken by the DIVS that are not enumerated in today's IAP. These actions would be a result of a significant change in actual or expected fire behavior over and above that anticipated at the time the IAP was prepared. These actions will be coordinated with and approved by the OSC whenever possible. 									
Division/Group Communication Summary									
Function	Channel	Frequency RX	Frequency TX	TONE RX	TONE TX	Function	Channel	Frequen cy RX	Frequency TX
COMMAND	1	170.0000	166.6750	151.4	151.4	A/G TAC	13	172.3500	172.3500
NIFC T6	8	166.7750	166.7750	151.4	151.4	A/G CMD	14	169.1500	169.1500
Prepared by Anya Moline – RESL		Approved By Robin Jermyn – PSC				Date 9/4/2020		Time 1800	

DIVISION ASSIGNMENT LIST				Branch		Division/Group			
Incident Name				V		LIMA			
SQF Complex				Operational Period					
				Date: 9/5/2020 to 9/6/2020		Time: 0600-0600			
Operations Personnel									
Operations Chief		Brent Olson, Scott Schrenk, Andy James (t) Shawn Borgen (t)		Branch Director		Ryan Butler / Logan Sanders (t) 406-250-0375 / 209-613-4951			
Air Operations		Dennis Morton Dan Sepulveda		Division/Group Supervisor		Mike King / Graydon Galloway 406-370-2121 / 208-596-5345			
Safety Officer		Gerald Vickers Dan Cassidy							
Resources Assigned This Period									
Strike Team/Task Force/ Resource Designator	Req#	Last Shift	Leader	# Persons	Drop Off Point /Time	Pick Up Point / Time			
HC1 Golden Eagles	C-55	9/14	Robert Villegas	19	Troy Meadows 0600	Troy Meadows 2100			
HC1 Sierra	C-57	9/13	Alan Roby	21	Troy Meadows 0600	Troy Meadows 2100			
WFM Mammoth	O-49	9/6	Jeffrey Karl	8	Troy Meadows 0600	Troy Meadows 2100			
DOZ2	E-5	9/6	Danny Lewis	3	Troy Meadows 0600	Troy Meadows 0600			
DOZ2	E-140	9/11	David Krisher	2	Troy Meadows 0600	Troy Meadows 0600			
Inyo Pack String	E-56	9/7	Lee Roesser	3	Troy Meadows 0600	Troy Meadows 2100			
SOF2	O-496		Tom Nash	1	Troy Meadows 0600	Troy Meadows 2100			
SOFR (t)	O-393	9/16	Jacob Broiller	1	Troy Meadows 0600	Troy Meadows 2100			
SORF (t)	O-511	9/17	Augie Barreda	1	Troy Meadows 0600	Troy Meadows 2100			
EMPF	O-497	9/15	Tommy Kavanaugh	1	Troy Meadows 0600	Troy Meadows 2100			
EMPF	O-495	9/16	Scott Hamilton	1	Troy Meadows 0600	Troy Meadows 2100			
EMPF	O-551	9/16	Mathew Heckman	1	Troy Meadows 0600	Troy Meadows 2100			
EMTF	O-580	9/17	Steve Devincenzi	1	Troy Meadows 0600	Troy Meadows 2100			
READ	O-228	9/12	Michael McGraw	1	Troy Meadows 0600	Troy Meadows 2100			
READ	O-231	9/11	Donna Peppin	1	Troy Meadows 0600	Troy Meadows 2100			
READ	O-252	9/11	Adam Toomey	1	Troy Meadows 0600	Troy Meadows 2100			
Work Assignments									
Task: Scout for opportunities to construct direct and indirect line, provide point protection as needed.									
Purpose: Limit impact to values at risk on northern edge within wilderness, limit fire spread on eastern edge of fire.									
End State: Values at risk in wilderness are not impacted, spread of fire to east is limited in divisions L and N									
Special Instructions									
<ul style="list-style-type: none"> Personnel to notify DIVS of potentially sensitive cultural materials. Castle Ambulance 1 staged at Whitsett Base Camp. Castle Ambulance 2 stage at R Ranch Spike. Castle REMS available to all DIVS. Prioritization of all control or containment actions taken during the operational period in this Division will be at the discretion of the DIVS. Actions may have to be taken by the DIVS that are not enumerated in today's IAP. These actions would be a result of a significant change in actual or expected fire behavior over and above that anticipated at the time the IAP was prepared. These actions will be coordinated with and approved by the OSC whenever possible. 									
Division/Group Communication Summary									
Function	Channel	Frequency RX	Frequency TX	TONE RX	TONE TX	Function	Channel	Frequency RX	Frequency TX
COMMAND	3	172.5500	162.1875	151.4	151.4	A/G TAC	13	172.3500	172.3500
NIFC T7	9	168.2500	168.2500	151.4	151.4	A/G CMD	14	169.1500	169.1500
Prepared by Anya Moline - RESL		Approved By Robin Jermyn - PSC				Date 9/4/2020		Time 1800	

DIVISION ASSIGNMENT LIST				Branch		Division/Group			
Incident Name				V		X-RAY			
SQF Complex				Operational Period					
				Date: 9/5/2020 to 9/6/2020		Time: 0600-0600			
Operations Personnel									
Operations Chief	Brent Olson, Scott Schrenk Andy James (t) Shawn Borgen (t)			Branch Director		Ryan Butler / Logan Sanders (t) 406-250-0375 / 209-613-4951			
Air Operations	Dennis Morton Dan Sepulveda			Division/Group Supervisor		Stryker Clark 406-546-7405			
Safety Officer	Gerald Vickers Dan Cassidy								
Resources Assigned This Period									
Strike Team/Task Force/ Resource Designator	Req#	Last Shift	Leader	# Persons	Drop Off Point /Time	Pick Up Point / Time			
HC1 Los Padres	C-56	9/13	Matt Aoki	19	Troy Meadows 0600	Troy Meadows 2100			
HC1 Bear Divide	C-66	9/13	Josh Thomas	19	Troy Meadows 0600	Troy Meadows 2100			
HC1 Crane Valley	C-73	9/16	Jose Rivera	18	Troy Meadows 0600	Troy Meadows 2100			
EMPF	O-92	9/7	Bryan Swenson	1	Troy Meadows 0600	Troy Meadows 2100			
EMPF	O-233	9/10	Silas Fischer	1	Troy Meadows 0600	Troy Meadows 2100			
EMPF	O-91	9/15	Royce Copeman	1	Troy Meadows 0600	Troy Meadows 2100			
EMPF	O-342	9/15	Yoshimi Toyota	1	Troy Meadows 0600	Troy Meadosw 2100			
Work Assignments									
<p>Task: Coordinate with resources west of the Kern River to contain fire spread east of the Kern River. Utilize ground and air operations assets to construct helispots within division to allow crews to be logistically supported. Secure fires edge from the east side of the Kern river to the east utilizing direct and indirect tactics. Initiate firing operations as needed.</p> <p>Purpose: Limit fire spread to the south and east. Crews are supported with supplies in order to progress east with line construction.</p> <p>End State: Fire progression to the east and south is contained.</p>									
Special Instructions									
<ul style="list-style-type: none"> Personnel to notify DIVS of potentially sensitive cultural materials. Castle Ambulance 1 staged at Whitsett Base Camp. Castle Ambulance 2 stage at R Ranch Spike. Castle REMS available to all DIVS. Prioritization of all control or containment actions taken during the operational period in this Division will be at the discretion of the DIVS. Actions may have to be taken by the DIVS that are not enumerated in today's IAP. These actions would be a result of a significant change in actual or expected fire behavior over and above that anticipated at the time the IAP was prepared. These actions will be coordinated with and approved by the OSC whenever possible. 									
Division/Group Communication Summary									
Function	Channel	Frequency RX	Frequency TX	TONE RX	TONE TX	Function	Channel	Frequen cy RX	Frequency TX
COMMAND	2	170.6875	166.5750	151.4	151.4	A/G TAC	13	172.3500	172.3500
NIFC T5	7	166.7250	166.7250	151.4	151.4	A/G CMD	14	169.1500	169.1500
Prepared by Anya Moline – RESL		Approved By Robin Jermyn - PSC				Date 9/4/2020		Time 1800	

DIVISION ASSIGNMENT LIST				Branch		Division/Group				
Incident Name				STRUCTURE		BLACK ROCK / BACKCOUNTRY				
SQF Complex				Operational Period						
				Date: 9/5/2020 to 9/6/2020		Time: 0600-0600				
Operations Personnel										
Operations Chief		Brent Olson, Scott Schrenk Andy James (t) Shawn Borgen (t)			Branch Director			Drew Daily 405-431-9476		
Air Operations		Dennis Morton Dan Sepulveda			Division/Group Supervisor			Geoff Farinholt 406-529-5671		
Safety Officer		Gerald Vickers Dan Cassidy								
Division/Group Supervisor										
Strike Team/Task Force/ Resource Designator		Req#	Last Shift	Leader		# Persons	Drop Off Point /Time		Pick Up Point / Time	
ENG3 SQF E-341		E-216	9/15			5	Troy Meadows 0600		Troy Meadows 2100	
ENG6 Flame Cahser		E-198	9/5	Edwin Hall		3	Troy Meadows 0600		Troy Meadows 2100	
ENG6 White Horse		E-199	9/15	Jason McGaughy		3	Troy Meadows 0600		Troy Meadows 2100	
ENG6 Late Summers		E-200	9/5	Josh Crollard		3	Troy Meadows 0600		Troy Meadows 2100	
ENG6 Late Summers		E-201	9/5	Brad Beck Jr.		3	Troy Meadows 0600		Troy Meadows 2100	
ENG5 Cate Land Fire		E-203	9/16			3	Troy Meadows 0600		Troy Meadows 2100	
ENG6 Dillon Fire		E-204	9/7	Riley Leingang		3	Troy Meadows 0600		Troy Meadows 2100	
ENG6 RandR		E-205	9/7	Mike Cox		3	Troy Meadows 0600		Troy Meadows 2100	
TSP		O-236	9/10	George Bowan		1	Troy Meadows 0600		Troy Meadows 2100	
EMPF		O-581	9/18	Joshua Terry		1	Troy Meadows 0600		Troy Meadows 2100	
AMBU		E-52	9/7	Castle 2		1	Troy Meadows 0600		Troy Meadows 2100	
Work Assignments										
Task: Develop and implement structure protection plan for Black Rock, Bonita Meadow, West Meadow and back country/wilderness structures. Recon Manatchee area.										
Purpose: Protect values at risk from wildfire impacts.										
End State: Values at risk and communities are able to operate in pre-fire condition. A plan to protect values at risk is developed.										
Special Instructions										
<ul style="list-style-type: none"> Personnel to notify DIVS of potentially sensitive cultural materials. Castle Ambulance 1 staged at Whitsett Base Camp. Castle Ambulance 2 stage at R Ranch Spike. Castle REMS available to all DIVS. Prioritization of all control or containment actions taken during the operational period in this Division will be at the discretion of the DIVS. Actions may have to be taken by the DIVS that are not enumerated in today's IAP. These actions would be a result of a significant change in actual or expected fire behavior over and above that anticipated at the time the IAP was prepared. These actions will be coordinated with and approved by the OSC whenever possible. 										
Division/Group Communication Summary										
Function	Channel	Frequency RX	Frequency TX	TONE RX	TONE TX	Function	Channel	Frequency RX	Frequency TX	
COMMAND	2	170.6875	166.5750	151.4	151.4	A/G TAC	13	172.3500	172.3500	
COMMAND	3	172.5500	162.1875	151.4	151.4	A/G CMD	14	169.1500	169.1500	
VFIRE 25	12	154.2875	154.2875	156.7	156.7					
Prepared by Anya Moline – RESL		Approved By Robin Jermyn - PSC				Date 9/4/2020			Time 1800	

Need two T2IA crews, 2 strike teams T6 engines with STENS

DIVISION ASSIGNMENT LIST			Branch		Division/Group				
Incident Name					NIGHT				
SQF COMPLEX			Operational Period						
			Date: 9/5/2020 to 9/6/2020		Time: 1800-0900				
Operations Personnel									
Operations Chief	Brent Olson, Scott Schrenk, Andy James (t) Shawn Borgen (t)		Branch Director						
Safety Officer	Gerald Vickers, Dan Cassidy		Division/Group Supervisor		Mark Brown 207-233-9348				
Resources Assigned This Period									
Strike Team/Task Force/ Resource Designator	Req#	Last Shift	Leader	# Persons	Drop Off Point /Time	Pick Up Point / Time			
WFM Slate Mtn	O-4	9/5	Angel Reyes	10	Whitsett Base 0600	Whitsett Base 2100			
ENG3 OVD E3132	E-135	9/11	Phillip Lewis	4	Whitsett Base 0600	Whitsett Base 2100			
ENG3 STF E346	E-136	9/11	Michael Scheu	4a	Whitsett Base 0600	Whitsett Base 2100			
ENG6 Blue Sky E8	E-63	9/11	Alex Parker	3	Whitsett Base 0600	Whitsett Base 2100			
ENG6 Cahoon 1	E-64	9/11	Blane Fifield	3	Whitsett Base 0600	Whitsett Base 2100			
ENG6 Cahoon 2	E-65	9/11	Randy Mattson	3	Whitsett Base 0600	Whitsett Base 2100			
ENG6 E696	E-72	9/9	William McDarment	3	Whitsett Base 0600	Whitsett Base 2100			
ENG6 Peanut Pie E2	E-78	9/11	Wayde Visser	3	Whitsett Base 0600	Whitsett Base 2100			
WT2 INF WT21	E-90	9/11	Cameron Ferrante	2	Whitsett Base 0600	Whitsett Base 2100			
WT2 ANF 237	E-113	9/10	Francisco Carrillo	2	Whitsett Base 0600	Whitsett Base 2100			
SOFR	O-213	9/11	Paul Tadlock	1	Whitsett Base 0600	Whitsett Base 2100			
AMBU	E-46		Castle1	2	Whitsett Base 0600	Whitsett Base 2100			
Work Assignments									
<p>Task: Patrol and monitor accessible fire area, support water handling operations from prior shifts, mop-up as appropriate based on firefighter safety.</p> <p>Purpose: Limit fire spread to additional values at risk.</p> <p>End State: Fire spread limited to existing fire perimeter.</p>									
Special Instructions									
<ul style="list-style-type: none"> Personnel to notify DIVS of potentially sensitive cultural materials. Castle Ambulance 1 staged at Whitsett Base Camp. Castle Ambulance 2 stage at R Ranch Spike. Castle REMS available to all DIVS. Prioritization of all control or containment actions taken during the operational period in this Division will be at the discretion of the DIVS. Actions may have to be taken by the DIVS that are not enumerated in today's IAP. These actions would be a result of a significant change in actual or expected fire behavior over and above that anticipated at the time the IAP was prepared. These actions will be coordinated with and approved by the OSC whenever possible. 									
Division/Group Communication Summary									
Function	Channel	Frequency RX	Frequency TX	TONE RX	TONE TX	Function	Channel	Frequency RX	Frequency TX
COMMAND	See 205					A/G TAC	13	172.3500	172.3500
NIFC T1	5	168.0500	168.0500	151.4	151.4	A/G CMD	14	169.1500	169.1500
Prepared by Anya Moline – RESL		Approved By Robin Jermyn - PSC				Date 9/4/2020		Time 1800	

This page intentionally left blank



AIR OPERATIONS SUMMARY 220		Prepared By: Daniel Sepulveda	Prepared: 09/4/2020	Prepared Time: 1900 hrs.
1. INCIDENT NAME: SQF Complex	2. OPERATIONAL PERIOD 09/5/2020	START TIME: 0800	END TIME: 2000	SUNRISE: 0631
				SUNSET: 1919

<p>3. REMARKS (Safety Notes, Hazards, Air Operations Special Equipment, etc.).</p> <ol style="list-style-type: none"> Assess mission complexity and the Benefit vs Risk of the mission. Ensure visibility and winds are adequate to safely conduct flight operations. Ensure safe vertical & horizontal separation between aircraft in smoky conditions. Utilize check points and call in and out of the dips. If you see a UAS on your division report it up the chain of command to Air Operations, it may or may not be a friendly! Smoky conditions can hamper our aviation operations adhere to visibility limitations, and DO NOT be pressured into accepting a mission that you know or feel is unsafe! 	<p>4. READY ALERT AIRCRAFT: H-408 Hoist Day/Night Capable Order through Communications/Air Attack/Peppermint Helibase See Medical Plan in the IAP</p>
	<p>5. TFR: 0/100 Freq: 123.725 Altitude: From the surface up to and including 12,000 feet MSL Polygon see NOTAM</p>

6. PERSONNEL	NAME	PHONE #	7. FREQUENCIES	AM	FM	8. FIXED-WING Avail/ Type/ Make-Model/ N#/ Base
AOBD	Dennis A. Morton	406.660.2318	A/A (Fixed)		165.9875	AIRTANKERS: ORDER THRU ATGS
ASGS	Daniel Sepulveda	909.374.8944	A/A (Rotor)	123.725		
ATGS	Tony Dupree	805.450.2676	A/G (Buckets)	TAC	172.3500	ATGS Platforms: N47TT – AC690 (Dupree)
HEBM Porterville	Bob Schmidt	520-975-8923	A/G Secondary	CMD	169.1500	
HEBM(T)Porterville	Darren Stanford	909.702.8344	CALCORD/Medivacs		156.0750	Order Type 1 Helicopters through ATGS Order Air Tankers through ATGS
HEBM Peppermint	Matt Quezada	559.542.2301	DECK		163.100	
ATBM	Raul Contreras	559.789.0191	TOLC	123.9750		*PSD DISCREET ONLY - *170.0750*
			Porterville UNICOM	122.800		Email daily aircraft costs to: castleairoperations@gmail.com
			Air Guard		168.6250 (110.9 TX)	Porterville Aviation Desk: 559.782.3120

9. HELICOPTERS

FAA N#	TY	MAKE/ MODEL	BASE	START	AVAIL	REMARKS	FAA N#	TY	MAKE/ MODEL	BASE	START	AVAIL	REMARKS
948CH	1	CH-47D	PVT	0800	0830	A-31	H520	2	205 A1 ++	Black rock	0800	0830	A-79
245CH	1	BV-234	PVT	0800	0830	A-53	H-522	2	205 A1 ++	Peppermint	0800	0830	A-123
135BH	1	S-70	PVT	0800	0830	A-76	H-523	2	205 A1 ++	Peppermint	0800	0830	A-11
699RH	1	KMAX	PVT	0800	0830	A-32	H-535	3	Bell 407	PVT	0800	0830	A-39
261CG	1	S-61	PVT	0800	0830	A-8							

10. TASK/ MISSION/ ASSIGNMENT (Type/ function includes: Air Tactical, Retardant, Recon, Personnel Transport, Bucket Operations, SAR, etc.)				
TYPE/FUNCTION	PRIORITY	NAME OF PERSONNEL OR CARGO (if applicable) or instructions for tactical aircraft	FLY FROM	FLY TO
ATGS		Provide continuous coverage over the fire as smoke and weather permits.	PVT	Fire
Initial Attack		Initial Attack actions as requested inside of TFR	PVT/Peppermint	IA
Medevac		** See Medical Plan in IAP – Review during Division Breakouts **	TBD	Fire
Water Drops		As needed and approved by OPS, order through ATGS	PVT	Fire
Recon		Fire reconnaissance by Ops as.	PVT	Fire
PSD		As needed and approved by OPS	PVT	Fire
OTHER		(Back Haul, Re-Supply, Crew Movement) Place all orders through communications	Peppermint	Fire

Helibase, Dip Sites, Pick Up Sites, etc.		Helibase, Dip Sites, Pick Up Sites, etc.	
Bridge Dip "B"	36 12.063' N, 118 27.445' W	C31	36 18.077' N 118 27.340' W
Confluence Dip "B"	36 7.700' N, 118 26.316' W	C4	36 10.909' N 118 35.882' W
Round Dip "B"	36 12.642' N, 118 28.000' W	C11	36 0.630' N 118 23.448' W
Freeman "NR"	36 6.875' N, 118 27.551' W	DIV A Sling	36 10.948' N 118 29.360' W
Beach Dip (X, U, N Only)	36 6.931' N, 118 17.824' W	Saddle Check	36 10.88' N 118 28.59' W
(MRB) Ranch Dip	35 58.494' N, 118 32.194' W	Ridge Check	36 8.55' N 118 26.72' W
H-1 T2	36 9.852' N, 118 26.985' W	Needle Check	36 5.89' N 118 27.59' W
H-2 T2	36 5.838' N, 118 26.806' W	Lookout Entry, Enter 2000'	36 3.89' N, 118 27.51' W
H-3 Black Rock T2	36 5.609' N, 118 15.666' W	Porterville HB	36 01.427' N 118 4.112' W
H-4 T2	36 6.128' N, 118 25.772' W	Peppermint HB	36 4.355' N 118 32.500' W
H-5 Piles Camp (NEW APPROVED 9/4 T2)	36 08.278' N, 118 28.678' W		
H-6 (NEW APPROVED 9/4 T2)	36 06.155' N, 118 24.808' W		
H-7 (NEW APPROVED 9/4 T2)	36 06.833' N' 118 24.373' W		
H-20	36 10.960' N 118 29.259' W		

Visibility Limitations VFR Flight Helicopters Day 1/2 statute mile Clear of clouds

Flights above ground level	Flight Permitted in Winds	
	Less than / Maximum Gust Spread	Type 3 Helicopters
More than 500' AGL	Type 1 Helicopters <50kts / Gusts: N/A	<50kts / Gusts: N/A
Less than 500' AGL	<40kts / Max Gust Spread: 15kts	<30kts / Max Gust Spread: 15kts

“When you are in doubt what to say, say what you really think”.
-Winston Churchill

INCIDENT RADIO COMMUNICATIONS PLAN		Incident Name SQF COMPLEX		Date/Time Prepared 9/04/2020		Operational Period Date/Time 9/05/20 0600 9/06/20 0600	
---	--	-------------------------------------	--	--	--	--	--

Ch #	Function	Channel Name/Trunked Radio System Talkgroup	Assignment	RX Freq	N or W	RX Tone/NAC	TX Freq	N or W	TX Tone/NAC	Mode A, D or M	Remarks
1	CMD REPEATER	NIFC C4	DIV A/B/Y/Z	170.0000		151.4	166.6750		151.4	A	JORDON PEAK
2	CMD REPEATER	NIFC C11	DIV X	170.6875		151.4	166.5750		151.4	A	SHERMAN PEAK
3	CMD REPEATER	NIFC C31	DIV L	172.5500		151.4	162.1875		151.4	A	COYOTE PEAK
4	FOREST REPEATER	SQF CH2	ALL/BACKUP	169.9000			165.7000		103.5	A	SQF FOREST RPTR DISPATCH
5	TACTICAL CHNL	NIFC T1	DIV A/NIGHT	168.0500		151.4	168.0500		151.4	A	SQF TACTICAL
6	TACTICAL CHNL	NIFC T3	DIV B	168.6000		151.4	168.6000		151.4	A	SQF TACTICAL
7	TACTICAL CHNL	NIFC T5	DIV X	166.7250		151.4	166.7250		151.4	A	SQF TACTICAL
8	TACTICAL CHNL	NIFC T6	DIV Y/Z	166.7750		151.4	166.7750		151.4	A	SQF TACTICAL
9	TACTICAL CHNL	NIFC T7	DIV L	168.2500		151.4	168.2500		151.4	A	SQF TACTICAL
10	TACTICAL CHNL	R5 T5	UNASSIGNED	167.1125		151.4	167.1125		151.4	A	SQF TACTICAL
11	TACTICAL CHNL	R5 T6	NELSON/LLOYD	168.2375		151.4	168.2375		151.4	A	STRUCTURE TAC
12	TACTICAL CHNL	VFIRE 25	POND/BLACK	154.2875		156.7	154.2875		156.7	A	STRUCTURE TAC
13	AIR TO GROUND	A/G TAC	A/G TAC	172.3500			172.3500			A	A/G TAC
14	AIR TO GROUND	A/G CMD	A/G CMD	169.1500			169.1500			A	A/G CMD OVERHEAD ONLY
15	TACTICAL CHNL	CALCORD	MEDEVAC	156.0750		156.7	156.0750		156.7	A	CALCORD MEDEVAC
16	AIR GUARD	AIR GUARD	EMCY ONLY	168.6250			168.6250		110.9	A	AIR GUARD

Prepared by (Communications Unit)
COMM UNIT 925.588.6879 / COM1 DUSTIN SENE 406.581.9027
 Incident Location SEQUOIA NF
 County State CA Latitude N Longitude 3-7-77 W

The convention calls for frequency lists to show four digits after the decimal place, followed by either an "N" or a "W", depending on whether the frequency is narrow or wide band. Mode refers to either "A" or "D" indicating analog or digital (e.g. Project 25) or "M" indicating mixed mode. All channels are shown as if programmed in a control station, mobile or portable radio. Repeater and base stations must be programmed with the Rx and Tx reversed.

This page intentionally left blank



MEDICAL PLAN (ICS 206 WF)

Controlled Unclassified Information//Basic

1. Incident/Project Name		2. Operational Period						
SQF Complex		Date/Time 09/05/20 0600hrs-09/06/20 0600hrs						
3. Ambulance Services								
Name	Complete Address	Phone & EMS Frequency	Advanced Life Support (ALS) Yes No					
Imperial Ambulance (west side)	28551 Hwy 190, Porterville, CA	559-687-3309	<input checked="" type="checkbox"/>	<input type="checkbox"/>				
Hall Ambulance (east side)	1001 21st St, Bakersfield	661-327-4111	<input checked="" type="checkbox"/>	<input type="checkbox"/>				
4. Air Ambulance Services								
Name	Phone	Type of Aircraft & Capability						
Kern County FD H408	657-464-7808	Incident Primary Air Rescue, Bell 205, ALS, 24/7 Hoist						
Skylife	800-305-5433	ALS, No Hoist, requires 100x100 LZ						
CHP H40 (Fresno)	559-262-0400	Air ambulance, ALS 24/7, DAY HOIST ONLY, NIGHT STAFFING ON CALL AFTER 1800 HRS						
US COAST GUARD	REGIONAL COMMAND CENTER 510-437-3701	AIR RESCUE, HOIST 24/7, NO IN-FLIGHT MEDICAL						
5. Hospitals								
Name Complete Address	GPS Datum – WGS 84 Coordinate Standard Degrees Decimal Minutes DD° MM.MMM' N - Lat DD° MM.MMM' W - Long		Travel Time Air Gnd		Phone	Helipad Yes No	Level of Care Facility	
	Lat:	36 19.65'N	30 Min	2.5 Hr	559-624-2000	<input checked="" type="checkbox"/>	<input type="checkbox"/>	Level 2 Trauma
Long:	119 17.676'W							
VHF:	468.0375 PL141.3 DTMF 3211 12K lb pad limit							
Kern Medical Center 1700 MT Vernon Ave.Bakersfield, CA 93306	Lat:	35 22.95'N	45 min	3 hr	661-326-2000	<input checked="" type="checkbox"/>	<input type="checkbox"/>	Level 2 Trauma
	Long:	118 58.182'W						
	VHF:	463.100 12K lb pad limit						
Community Regional Medical Center 2823 Fresno St.Fresno, CA 93721	Lat:	36 44.568'N	1 hr	3 hr	559-459-6000 ER 559-459-4220	<input checked="" type="checkbox"/>	<input type="checkbox"/>	Level 1 Trauma/ Burn Center
	Long:	119 47.094'W						
	VHF:	123.05 key 5times for lights 22K lb pad limit						
6. Division Branch Group		Area Location Capability						
Div A	EMS Responders & Capability:	Ron Spellman, EMPF; John Sitar, EMP; Castle ambulance 3,						
	Equipment Available on Scene:	ALS, ALS ambulance,						
	Medical Emergency Channel:	Command						
	ETA for Ambulance to Scene:							
	Air:	30 min						
	Ground:	In division						
	Approved Helispot:	H1						
	Lat:	36 9.852'N						
	Long:	118 26.985'W						
Div Y/Z	EMS Responders & Capability:	Robert Abbruzzese EMPF; Patrick Garcia, EMTF; REMS						
	Equipment Available on Scene:	ALS; Extrication equipment						
	Medical Emergency Channel:	Command						
	ETA for Ambulance to Scene:							
	Air:	30 min						
	Ground:	15 min						
	Approved Helispot:	H1						
	Lat:	36 9.852'N						
	Long:	118 26.985'W						

MEDICAL PLAN (ICS 206 WF)

Controlled Unclassified Information//Basic

7. Name & Location	Remote Camp Location(s)			
<h2>Div X</h2>	EMS Responders & Capability:		Bryan Swenson, EMPF; Silas Fischer EMPF; Royce Copeman EMPF; Yoshimi Toyota EMPF	
	Equipment Available on Scene:		ALS	
	Medical Emergency Channel:		Command	
	ETA for Ambulance to Scene:			
	Air:		35 mins	
	Ground:		Air only	
	Approved Helispot:		H2	
	Lat:		36 5.838°N	
	Long:		118 26.806°W	
	<h2>Div L</h2>	EMS Responders & Capability:		Tommy Kabenaugh, EMPF; Matthew Heckman, EMPF; Scott Hamilton, EMPF; Steve DeVincenzi, EMTF
Equipment Available on Scene:		ALS		
Medical Emergency Channel:		Command		
ETA for Ambulance to Scene:				
Air:		35 mins		
Ground:		1 hr		
Approved Helispot:		NONE		
Lat:				
Long:				
<h2>Blackrock Backcountry</h2>		EMS Responders & Capability:		Joshua Terry, EMPF; Castle Ambulance 2
	Equipment Available on Scene:		ALS; ALS Ambulance	
	Medical Emergency Channel:		Command	
	ETA for Ambulance to Scene:			
	Air:		35 mins	
	Ground:		1 hr	
	Approved Helispot:		H 3	
	Lat:		36 5.609°N	
	Long:		118 15.666°W	
	<h2>Night Div</h2>	EMS Responders & Capability:		Castle Ambulance 1
Equipment Available on Scene:		ALS Ambulance		
Medical Emergency Channel:		Command		
ETA for Ambulance to Scene:				
Air:		35 mins		
Ground:		1 hr		
Approved Helispot:		H 5		
Lat:		36 8.278°N		
Long:		118 28.678°W		
8. Prepared By (Medical Unit Leader)		9. Date/Time	10. Reviewed By (Safety Officer)	11. Date/Time
Emily Ellick-Flettire-405-593-3369		09/04/2020	SOF2 Gerald Vickers 443-614-4358	09/04/2020

MEDICAL PLAN (ICS 206 WF)

Controlled Unclassified Information//Basic

Medical Incident Report

FOR A NON-EMERGENCY INCIDENT, WORK THROUGH CHAIN OF COMMAND TO REPORT AND TRANSPORT INJURED PERSONNEL AS NECESSARY.

FOR A MEDICAL EMERGENCY: IDENTIFY ON SCENE INCIDENT COMMANDER BY NAME AND POSITION AND ANNOUNCE "MEDICAL EMERGENCY" TO INITIATE RESPONSE FROM IMT COMMUNICATIONS/DISPATCH.

Use the following items to communicate situation to communications/dispatch.

1. CONTACT COMMUNICATIONS / DISPATCH (Verify correct frequency prior to starting report)

Ex: "Communications, Div. Alpha. Stand-by for Emergency Traffic."

2. INCIDENT STATUS: Provide incident summary (including number of patients) and command structure.

Ex: "Communications, I have a Red priority patient, unconscious, struck by a falling tree. Requesting air ambulance to Forest Road 1 at (Lat./Long.) This will be the Trout Meadow Medical, IC is TFLD Jones. EMT Smith is providing medical care."

Severity of Emergency / Transport Priority	<input type="checkbox"/> RED / PRIORITY 1 Life or limb threatening injury or illness. Evacuation need is IMMEDIATE <i>Ex: Unconscious, difficulty breathing, bleeding severely, 2° – 3° burns more than 4 palm sizes, heat stroke, disoriented.</i> <input type="checkbox"/> YELLOW / PRIORITY 2 Serious Injury or illness. Evacuation may be DELAYED if necessary. <i>Ex: Significant trauma, unable to walk, 2° – 3° burns not more than 1-3 palm sizes.</i> <input type="checkbox"/> GREEN / PRIORITY 3 Minor Injury or illness. Non-Emergency transport <i>Ex: Sprains, strains, minor heat-related illness.</i>	
Nature of Injury or Illness & Mechanism of Injury		<i>Brief Summary of Injury or Illness (Ex: Unconscious, Struck by Falling Tree)</i>
Transport Request		<i>Air Ambulance / Short Haul/Hoist Ground Ambulance / Other</i>
Patient Location		<i>Descriptive Location & Lat. / Long. (WGS84)</i>
Incident Name		<i>Geographic Name + "Medical" (Ex: Trout Meadow Medical)</i>
On-Scene Incident Commander		<i>Name of on-scene IC of Incident within an Incident (Ex: TFLD Jones)</i>
Patient Care		<i>Name of Care Provider (Ex: EMT Smith)</i>

3. INITIAL PATIENT ASSESSMENT: Complete this section for each patient as applicable (start with the most severe patient)

Patient Assessment: See IRPG PAGE 106

Treatment:

4. TRANSPORT PLAN:

Evacuation Location (if different): (Descriptive Location (drop point, intersection, etc.) or Lat. / Long.) Patient's ETA to Evacuation Location:

Helispot / Extraction Site Size and Hazards:

5. ADDITIONAL RESOURCES / EQUIPMENT NEEDS:

Example: Paramedic/EMT, Crews, Immobilization Devices, AED, Oxygen, Trauma Bag, IV/Fluid(s), Splints, Rope rescue, Wheeled litter, HAZMAT, Extrication

6. COMMUNICATIONS: Identify State Air/Ground EMS Frequencies and Hospital Contacts as applicable

Function	Channel Name/Number	Receive (RX)	Tone/NAC *	Transmit (TX)	Tone/NAC *
COMMAND					
AIR-TO-GRND					
TACTICAL					

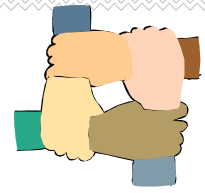
7. CONTINGENCY: Considerations: If primary options fail, what actions can be implemented in conjunction with primary evacuation method? Be thinking ahead.

8. ADDITIONAL INFORMATION: Updates/Changes, etc.

REMEMBER: Confirm ETA's of resources ordered. Act according to your level of training. Be Alert. Keep Calm. Think Clearly. Act Decisively.



Human Resource Message



UPDATE ON LOCATION: I am located at the Kern Valley High School. Or you can call me at 707-330-9939! Thank you, Andrea Cabida

YOUR RIGHTS AND RESPONSIBILITIES

Rights:

- To work in a harassment-free environment where people treat one another with dignity, equity, courtesy and respect.
- To say "no" to unwelcome advances or requests for favors.
- To file complaints or grievances through appropriate avenues.

Responsibilities:

- To behave in a manner that treats people with dignity, equity, courtesy and respect.
- To abide by agency and incident ethics and conduct regulations including zero tolerance for drugs and alcohol in the work environment.
- To report any harassment or other inappropriate behavior you observe or experience

REMOTE CHECK-IN

1. Scan the code on front of IAP to access the fillable check-in form. If you are unable to scan the QR code you may stop by Plans and use the remote check-in station.
2. Email qualification cards, manifests, contract, AD paperwork to:
2020.castle.finance@firenet.gov
3. Call Status/Check-In 858-204-7419 with questions.

Are you a TRAINEE?

1. Scan these codes to access the fillable *trainee* information forms. Send photo of qualification cards and taskbook cover to: heather.e.grove@usda.gov



Registration



Check-out



Exit Interview

2. Call Incident Training Specialist 530-394-8076 with questions from 0600 – 2100 daily.

DEMOBILIZATION IS NOW REMOTE!!

Demobilization Steps:

1. ALL accountable property checked out from incident must be returned (i.e. communications, supply). This can be turned in at ICP.
2. Send in all finance documentation (time must be projected for travel home).
 - a. Only 1 representative per resource should to finance at ICP.
 - b. Abide by scheduled DMOB time or call finance for an unscheduled DMOB.
 - c. Government agency resources that would like to close out their time 100% remotely should call 949-591-4123 when they are close to their DMOB date and make necessary arrangements to complete the process.
3. Scan the QR code on the front of the IAP to complete the DMOB process and start your travel home. If you are unable to scan the code below to complete travel information, you can stop by Plans and use the remote workstation to finish your DMOB!

Call DMOB at 951-235-1568 if you have any questions regarding this process!

FINANCE MESSAGE

OPTIONS FOR SUBMITTING TIME:

1. **Fillable PDF CTR/Shift Ticket:** QR code to the fillable forms are included below. If you do not have QR capabilities finance can e-mail you the forms directly.



2. **Hard Copy CTR/Shift Ticket:** Fill out a hard copy CTR, snap a picture and email/text that into finance. If you send in a picture, please make sure it is legible and includes the supervisor's signature at the bottom!
 3. OR you may turn in your actual hard copy as usual at Whitsett Spike Camp
- Please try to submit time at least every other day
 - H-Pay justifications are still required on your CTRs – “H = Hazard Pay” is not sufficient

2020.castle.finance@firenet.gov

Agency Overhead/Crews/Engines: 949-591-4123

Contractors/Equipment: 949-591-4131

Comp/Claims: 949-330-9973

TIP:

*****In order to use fillable pdf forms, you must have some version of Adobe Acrobat downloaded on your device. If you have any issues opening the documents call finance for assistance. *****

09/05/2020

TENTATIVE RELEASE

CASTLE US-CA-SQF-002541

EQUIPMENT

E-66	0700	(ENG6)	ENGINE - T6 - SOLOMON FIRE
E-202	0815	(ENG5)	ENGINE - T5 - ABERASTURI,

Things to Know- Resource Message

CA-SQF-002622

Reporting of Cultural Sites

- Do not use the radio. Looters listen to our frequencies and will note where you find things.
- Grab a GPS point, bump it up the chain of command or directly inform a READ.

Food on the Line Attract Wildlife Over Time.

- Keep food off the line as much as possible. It lures in wildlife, especially on indirect and contingency lines. Food associate's wildlife to humans and can cause future issues (i.e. bears looking for food in camps).

Sensitive Areas

- READs will be flagging sensitive areas during the incident.
- By default, please avoid going into these areas.
- The two flagging colors used are a strip of blue and a strip of red.
- For more information, please consult with a READ.

Keep Up the Good Work!

Continue to do good work for cultural and natural resources by doing the following:

- Picking up trash/micro-trash.
- Removing unused flagging.
- Sharing information and working alongside READs.
- When moving on to a new area, leaving the old area better than you found it.

What is so special about the Little Kern Golden Trout?

Little Kern golden trout are native to the Little Kern River and tributaries in the southern Sierra Nevada (Tulare County), mostly within Sequoia National Forest and Sequoia National Park. The Little Kern River is a tributary to the Kern River in the Golden Trout Wilderness. These trout have been isolated from more recent invasions of coastal rainbow trout by a series of impassable waterfalls created by mountain uplift in the lower portion of the drainage. Transplants drastically altered the distribution of Little Kern golden trout. Early anglers and ranchers moved fish to waters outside their historic range, such as Coyote Creek in the 1880s. Later transplants of non-native trout into the Little Kern River basin displaced the subspecies from much of its historic habitat through competition and hybridization.

Due to considerable conservation and restoration efforts, genetically pure populations are currently found in a majority of the tributaries within the Little Kern basin. Secure pure populations are located upstream of barriers that provide protection from non-native trout. Other streams within the drainage have populations with relatively low levels of introgression.

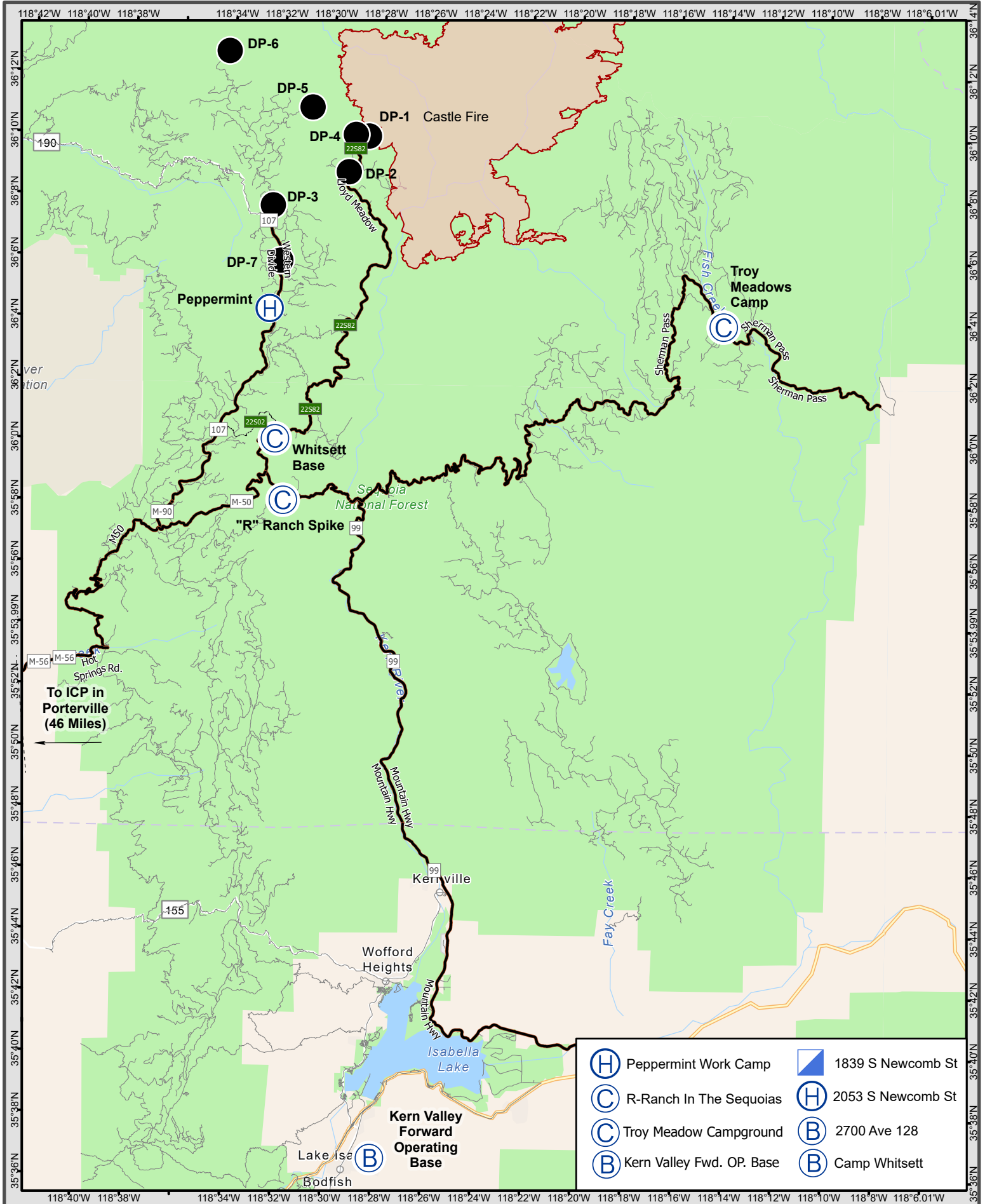


Northern Rockies Team 1

SQF COMPLEX

PHONE LIST

POSITION	NAME	MOBILE PHONE
SAFETY		
Safety Officer 1	Vicker Jr, Gerald W	443-614-4358
PUBLIC INFORMATION		
Public Information Officer 1	Smith, Jeannette M	406-544-7892
LIAISON		
Liaison Officer	Taylor, Robert L	406-554-4679
OPERATIONS		
Operations Section Chief 1	Olson, Brent H	406-249-4994
Line Ops	Schrenk, Scott	406-250-0354
Air Ops	Morton, Dennis	406-660-2318
PLANNING		
Planning Section Chief	Jermyn, Robin	406-360-5936
Planning Section Chief (t)	Carlin, Rob	406-249-1989
Deputy Planning Chief	Gump, Robert	850-688-7623
Status Check In	Heinsch, Faith Ann	858-204-7419
DEMOB	Murphy, Tanya	951-235-1568
Sequoia NF READ	Courter, Josh	559-920-7023
Inyo NF READ	Barnett, Adam	760-920-8104
LOGISTICS		
Logistics Section Chief 1	Showers, Charles	406-531-3691
Ordering Manager	Lind, Rita	406-291-3012
Supply Unit Leader	King, Josh	406-855-0984
Communications Unit Leader	Sene, Dustin	406-581-9816
COVID-19 Medical	Gaul, Roylene	406-381-6888
FINANCE		
Finance Section Chief 1	Schrenk, Amy	406-830-5214
For COMP/CLAIMS		949-330-9973
For Contractors		949-591-4131
For OH/Crews/Engines		949-591-4123



TRANSPORTATION SQF Complex Sept 4, 2020

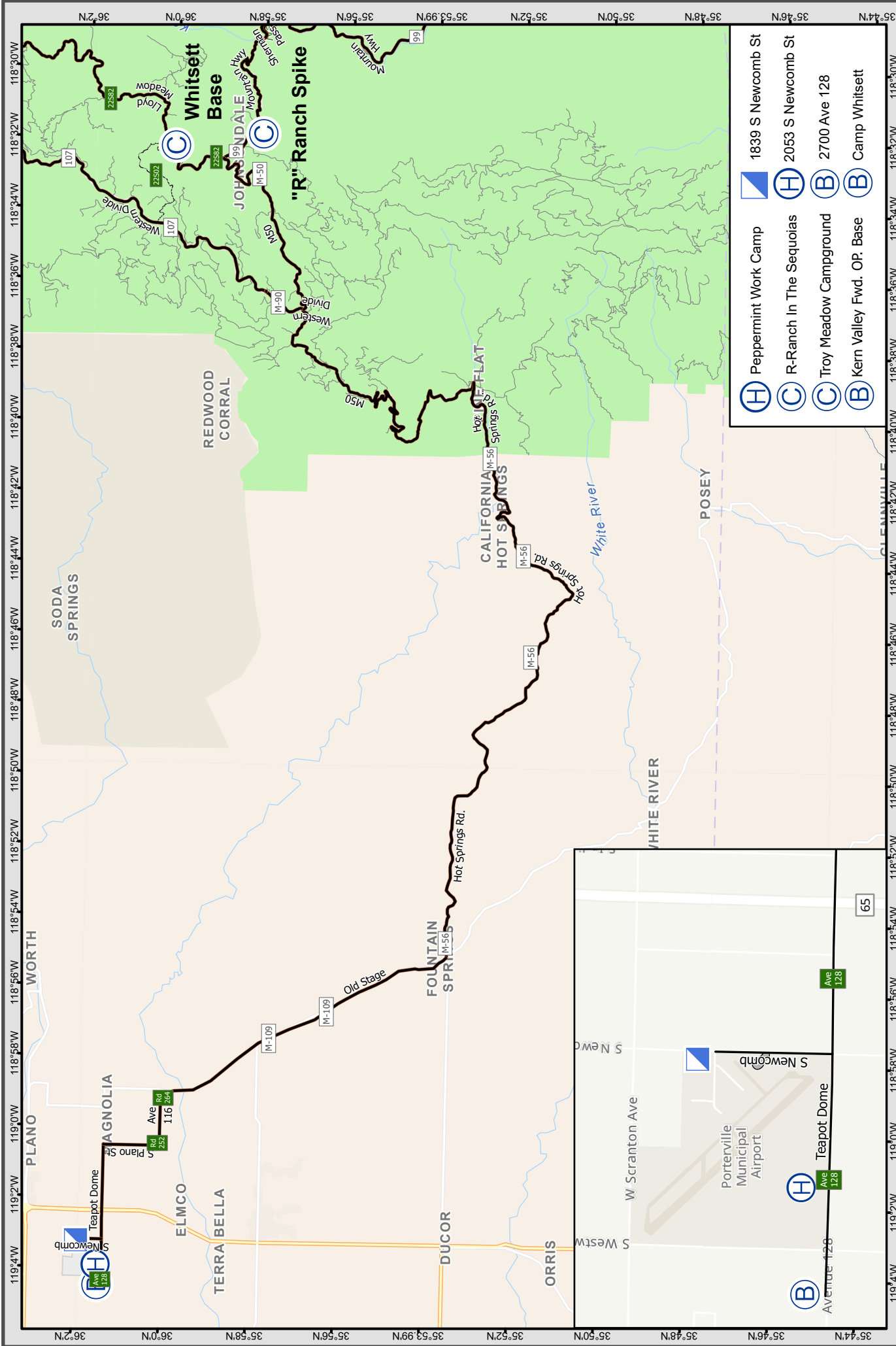
East Transportation Map
SQF Complex
CA-SQF-002622





TRANSPORTATION SQF Complex
Sept 4, 2020

0 1 2 4 Miles



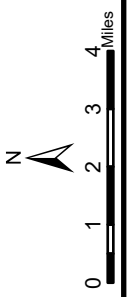
- H** Peppermint Work Camp
- C** R-Ranch In The Sequoias
- C** Troy Meadow Campground
- B** Kern Valley Fwd. OP. Base
- B** Camp Whitsett
- H** 1839 S Newcomb St
- C** 2053 S Newcomb St
- B** 2700 Ave 128

TRANSPORTATION
SQF Complex
Sept 4, 2020



- H** Helibase
- C** Incident Base
- B** Incident Command Post

West Transportation Map
SQF Complex
CA-SQF-002622



TRANSPORTATION
SQF Complex
Sept 4, 2020

This page intentionally left blank



