

SQF COMPLEX – INCIDENT ACTION PLAN

P5NG2P (0513)

CA-SQF-002622



OPERATIONAL PERIOD

Sunday September 6, 2020
Monday September 7, 2020
0600 to 0600

VALUES AT RISK

Firefighters and Public Safety

Communities

- ❖ Ponderosa, Camp Nelson, Pyles Boys Camp, Rogers Camp, Sequoia Crest, Cedar Slope, Mountain Aire, and Coy Flat

Infrastructure

- ❖ Osa Meadows, USGS Seismic Station, High-Use Recreation Areas, Campgrounds, Trailheads and Facilities

Natural Resources and Cultural Values

- ❖ Giant Sequoia Groves, Freeman Grove, Little Kern Golden Trout, Mountain Yellow Legged Frog, and Sierra Nevada Bighorn Sheep Habitats
- ❖ Archaeological and Cultural Resources
- ❖ Riparian Areas



INCIDENT OBJECTIVES	1. Incident Name SQF COMPLEX	2. Date Prepared 9/5/2020	3. Time Prepared 1600
	4. Operational Period		
September 6, 2020 0600 to September 7, 2020 0600			
5. General Control Objectives for the Incident			
<ul style="list-style-type: none"> • Limit growth of the Castle Fire by establishing a holding line that is safe for firefighters and offers high probability of success to keep the fire: <ul style="list-style-type: none"> ○ North of Durr Wood Camp ○ South of Sequoia Kings Canyon Wilderness Boundary ○ East of Highway 190 to Summit Trail ○ West of Toowa Range to King Fisher Ridge to 22S05 Road • Monitor the spread/growth of the Shotgun Fire using air operation assets. • Protect and minimize impacts to identified values at risk including the communities of Ponderosa, Camp Nelson, Pyles Boys Camp, Rogers Camp, Cedar Slope, Sequoia Crest, Mountain Aire, and Coy Flat, as well as Freeman Giant Sequoia Grove, Osa and Beck Meadows, trailheads and facilities. • Coordinate with the Sequoia NF Duty Officer on support to any new initial attack. 			
6. Management Objectives			
<ul style="list-style-type: none"> • Implement suppression actions that have a high potential for success, carefully weighing risk exposure to firefighters. • Provide for the safety of firefighters, aviation and public through clear communication. Ensure an understanding of strategies and tactics, including a clearly defined and obtainable end state, in order to facilitate sound risk mitigation decision making. • Implement social distancing and adhere to the “module of one” concept to reduce physical exposure and transmission of COVID-19, to provide for the health and safety of all incident personnel. • Minimize to the extent feasible smoke exposure to firefighters, communities and other affected areas to reduce susceptibility to the consequences from COVID-19 exposure. • Maintain and strengthen relationships with partner agencies, stakeholders, cooperators, community leaders, and local agencies utilizing most effective platforms available. • Minimize adverse effects from suppression actions on riparian areas, wetlands, Little Kern Golden Trout, Mountain Yellow Legged Frog, and Sierra Nevada Bighorn Sheep habitats. • Minimize impacts to Wilderness areas; use minimum impact suppression tactics (MIST) by utilizing trails, streams, ridges and natural barriers when possible for control lines. 			
7. Commander’s Intent			
<ul style="list-style-type: none"> • Safety: Address fire fighter, public, and aviation safety through hazard/exposure mitigation. • Communication: We will keep the Agency Administrators informed of significant accomplishments and issues. • Risk Management: We will use a robust risk assessment process to mitigate unnecessary risk to fire fighters and update and/or revise decisions as necessary. • Human Resources: We will ensure that all incident personnel be treated with dignity and respect. We have a zero tolerance for harassment, alcohol, or illegal drug use. • Operations: We will make informed tactical decisions engaging the fire in the right locations with the appropriate resources. • Public Information: We will provide timely and accurate information through the press, meetings, trap lines, briefings, and social media. • Stakeholders: We will coordinate with the delegating agencies to identify key partners and keep them effectively informed of progress and to use their local knowledge. • Finance: We will establish and monitor cost effective methods for accomplishing incident objectives. 			
8. ATTACHMENTS (X IF ATTACHED)			
<input checked="" type="checkbox"/> Organization List - ICS 203		<input checked="" type="checkbox"/> Medical Plan - ICS 206	<input type="checkbox"/> _____
<input checked="" type="checkbox"/> Division Assignment Lists - ICS 204		<input checked="" type="checkbox"/> Unit Log 214	<input type="checkbox"/> _____
		<input checked="" type="checkbox"/> WF206 9 Line	<input type="checkbox"/> _____
9. Prepared By (Planning Section Chief)		10. Approved By (Incident Commander)	
Rob Carlin PSC1 (t)		Michael Goicoechea IC	

ORGANIZATION ASSIGNMENT LIST				Operations Section	
1. Incident Name		SQF Complex		Field Operations	Scott Schrenk, Andy James (t)
2. Date Prepared	9/5/2020	3. Time Prepared	1700	Planning Operations	Brent Olson 406.249.4994, Shawn Borgen (t)
4. Operational Period				Branch I Director	Justin Kaber
September 6, 2020 to September 7, 2020 0600 to 0600				Branch V Director	Ryan Butler / Logan Sanders (t)
Incident Commander and Staff				Structure Branch	Drew Daily
Incident Commander	Mike Goicoechea			Branch I	
Deputy	Mark Goeller, Greg Poncin			Alpha	Kate Airhart
Safety Officer	Gerald Vickers 443.614.4358			Bravo	Rocky Wagoner
Information Officer	Jeannette Smith 406.544.7892			Charlie	Unstaffed
Liaison Officer	Rob Taylor 406.544.4679			Golf	Unstaffed
Medical Section Chief				Yankee - Zulu	Isaac Naylor
Agency Representative				Branch V	
SQF AA	Constance Cummins			India	Unstaffed
SQF AR	Jeremy Dorsey			Lima	Mike King
SQF READ	Josh Courter 559-920-7023			November	Unstaffed
INF AR	David Andersen			Uniform	Unstaffed
INF AA	John (Pancho) Smith			X-ray	Stryker Clark
INF READ	Adam Barnett 760.920.8104				
SEKI AA	Lee Taylor			Structure	
SQF Chief 1	Angie Sanchez-Hand			Black Rock / Backcountry	Geoff Farinholt
Sequoia & Kings NPS	Dan Morford			Lloyd	Bryan Duffy
Tulare Co FD	Jeff McLaughlin			Nelson	Hunter Seaborn Bell, III
SoCAL Edison	Troy Whitman			Ponderosa	Brad Allen
CHP	Chad Patton				
Tribal Liaison	Dirk Charley 559-554-5433			Night	
Tule River Tribe	Zane Santos			Night	Mark Brown
Planning Section					
Section Chief	Robin Jermyn 406.360.5936 Rob Carlin (t)			Air Operations Branch	
Deputy	Rob Gump 850.688.7623			Air Operations Branch Director	Dennis Morton 406.660.2318
Situation Unit	Lance Robinson 208.421.5969			Air Support Group Supervisor	Daniel Sepulveda
Demobilization Unit	Tanya Murphy 951.235.1568			Air Tactical Group Supervisor	Tony Duprey
Resources Unit Leader	Anya Moline 406.366.1979 Anthony Watts (t)			Finance Section	
Status Check-in	Faith Ann Heinsch 858.204.7419			Section Chief	Amy Schrenk 406.830.5214
Fire Behavior Analyst	Brian Anderson 406.660.0450 David Greathouse Lauren Blake (t)			Time Unit	Marta Lujan 970.275.3120
Long-Term Analyst	Lawen Hollingsworth 406.552.5440 Alicia Reiner (t)			Equipment Time	Lynda Pike 406.382.0086
GIS Specialist	Erin Heiselmann 406.546.4014 Nate Meyer 307.761.1541 McIntyre Murphy (t)			Personnel Time	Tama Lester 580.212.1017
Computer Specialist	Tim McCracken 406.407.3152			Cost Unit	Khon Viengkham 703.217.7269
Meteorologist	Andrew Gorelow, Dan Byrd			Procurement Unit Leader	Dana Bangart 406.360.0029
Human Resource	Andrea Cabida 707.330.9939			Comps / Claims	Leon Augustine 406.363.8956 Shannon Maxwell 406.366.3724
Documentation Unit	Jenny Rechel			IBA	Nancy Gibson
SOPL	Roy Hall				
Training Specialist	Heather Grove 530.394.8076 Matt Boss (t)			Prepared by:	Anya Moline - RESL
Logistics Section					
Section Chief	Charlie Showers 406.370.3787 Jim Evanoff 406.223.8660				
Ordering Manager	Rita Lind 310.650.1222				
Supply Unit	Josh King 406.855.0984				
Facilities Unit	James Andruzzi 917.443.2556				
Base Camp	Patrick Beers 253.318.7992				
Ground Support Unit	Keith Windell 406.531.2987				
Communications Unit	Dustin Sene 406.531.2987				
Communications Tech	Trent Coppinger 406.581.9816				
Medical Unit	Emily Ellick-Flette 405.593.3369				

Holiday Weekend Expected To Triple Local Population!!!

SAFETY AND HUMAN HEALTH MESSAGE

Driving:

- Expect more traffic.
- With the increased traffic, tempers will flair.
- Be patient with other drivers and yourself. If you have a meeting or deadline, try to give yourself extra time in advance.
- There is no need to hurry. Our number one priority is Fire Fighter and Public Safety.
- Be the example. Do you really need to make that pass?
- Take your time getting to the fire line and coming back from the fire line.
- Increase your following distances; this will give you a margin if others are following you too close.
- If the roads are dusty, slow down and increase your following distance.
- Reduce distractions. Set cell phones aside, mute if needed or turn off entirely.
- Remove all objects from the dash of your vehicle. These are also distractions.
- Don't cut corners - use the outside of the lane on tight turns and slow down to avoid collisions.
- Clean your windshield. You can't be a good driver if you can't see.

In Town:

- If you need a store, stop, and go for it. But be wise.
- Use a mask, hand sanitize before and after you go in the store and maintain social distancing.
- If you have them, use medical gloves when utilizing the gas pump, pin pads at pump, window washing tools. Don and Doff video:
https://www.youtube.com/watch?v=3I_kKVNrEMo
- Dispose of your gloves in the proper way without contaminating yourself.
- Maintain social distances while in the store.
- Plan your trips and keep them to a minimum. This will reduce exposure.
- Do talk to the public but use caution and use your COVID protocols.



FIRE WEATHER FORECAST



FORECAST NO: 13
PREDICTION FOR: Sept 6 - Sept 7, 2020 0600-0600

INCIDENT NAME: SQF Complex
UNIT: CA-SQF
SIGNED: *Andrew Gorelow*

TIME AND DATE
FORECAST ISSUED: Sat, Sep 5 @ 2000 hours

Incident Meteorologist – Andrew Gorelow

WEATHER DISCUSSION: Another day of hot, dry and unstable conditions with the inversion expected to lift around 0900. This will likely lead to activity increasing earlier. Morning southeast to south winds are expected to turn more southwest to west around noon which is earlier than in previous days. These southwest to west winds look to remain in place through 1600 before turning to the northwest late afternoon. Speeds should generally remain 5 to 10 mph with occasional gusts to 20 mph. Skies will again be partly cloudy in the afternoon with temperatures climbing into the mid-80s to lower 100s. RH is expected to drop into the upper single digits to mid-teens. RH recoveries will remain poor overnight. A more northwest flow is expected on Monday which should continue through much of the day.

SKY/WEATHER TODAY (SUNDAY): Hot and dry. Sunny morning becoming partly cloudy in the afternoon. Morning drainage winds becoming southeast to south after 0900 with speeds 4 to 6 mph with gusts to 12 mph. Southwest to west winds expected to start pushing across the fire between 1100-1200 with speeds 4 to 8 mph gusts to 15 mph. Northwest winds 4 to 8 mph gusts to 12 mph are then forecast to push into DIV C after 1400 which will then spread across the remainder of the fire. Winds will be heavily affected by the local terrain.

MAX TEMPERATURES / MIN RELATIVE HUMIDITY:

5000 FT: 96 to 101 degrees (Up 1-2 Degrees) / 8 to 13% (Down 1-2%)
7000 FT: 86 to 91 degrees (Up 1-2 Degrees) / 12 to 17% (Little Change)

EYE LEVEL WINDS:

Slope/Valley: Morning drainage winds will become southeast to south after 0900 with speeds 4 to 7 gusts to 12 mph. Southwest to west winds expected to start pushing across the fire between 1100-1200 with speeds 4 to 8 mph gusts to 15 mph. Northwest winds 4 to 8 mph gusts to 12 mph are then forecast to develop after 1400. Winds will continue to be heavily impacted by local terrain.

Ridges: South to southwest 5 to 10 mph becoming northwest 5 to 15 mph in the afternoon.

MIXING HEIGHT...15,500 FT AGL **VENTILATION...**Excellent

TRANSPORT WIND...Northeast around 5 mph in the morning, shifting to the west in the afternoon 10 to 15 mph.

CWR (0.10")...0% **LAL...**1 **HAINES...**5

SKY/WEATHER TONIGHT (SUNDAY NIGHT): Mostly clear with smoke in the Kern River Valley. Inversions developing by 2200. North to northeast 3 to 6 mph. Squirrely winds could occur near the confluence of the Little Kern/Kern Rivers. Overnight RH recoveries will remain poor.

MIN TEMPERATURES / MAX RELATIVE HUMIDITY

5000 FT: 55 to 60 degrees (Little Change) / 25 to 30% (Down 2-3%)
7000 FT: 66 to 71 degrees (Up 1-3 degrees) / 23 to 28% (Down 1-3%)

EYE LEVEL WINDS:

Slope/Valley: North to northeast 3 to 6 mph.

Ridges: Northeast 10 mph.

CWR (0.10")...0% **LAL...**1 **HAINES...**5

MONDAY: Inversion lifting by 1000 with winds becoming northwest 5 to 10 mph in the afternoon. Mostly sunny with continued low RH.

Max Temps: 84 to 101. **Min RH:** 10 to 15%. **Winds:** Morning drainage winds becoming northwest 5-10 mph in the afternoon.

LAL: 1 **CWR (0.10"):** 0% **MIXING HEIGHT:** 12,500 FT AGL **HAINES:** 5

OUTLOOK for TUESDAY and WEDNESDAY:

Weather: Mostly sunny. Northeast winds 5 to 10 mph Tuesday. Southeast to south Wednesday. Slightly cooler temperatures. **High Temp:** 83-97 **Min RH:** 8-18% **CWR:** 0% **LAL:** 1 **Wind:** Northeast 5 to 10 mph Tuesday and Southeast to south 5 to 10 mph Wednesday.

FIRE BEHAVIOR FORECAST

FORECAST NUMBER: 16	TYPE OF FIRE: Wildland
FIRE NAME: SQF Complex	OPERATIONAL PERIOD: 9/6/2020: 0600-0600
DATE ISSUED: September 5, 2020	TIME ISSUED: 1800
UNIT: CA-Sequoia National Forest	SIGNED: /s/ David Greathouse FBAN/ Lauren Blake FBAN(t)

WEATHER SUMMARY

****Another Hot, Dry and Unstable Day****

(See Weather forecast for details)

Weather thresholds for large fire growth: Temp: >83 deg, RH <20%, 20ft winds >7mph

FIRE BEHAVIOR

GENERAL

Fuels- Fuels involved in the Castle Fire are primarily Fire Behavior Fuel Models (FBFM) timber litter and understory (TU5) in areas without recent fire history, and a mix of grass (GR2) and brush (GS2) in burn scars less than 20 years old. The Shotgun Fire is higher elevation and does not have recent fire history in its current footprint and is more represented by a grass shrub (GS2) moderate timber litter (TL6). Fuels are very dry for this time of year. The ERC is currently near the 97th percentile, and the 100- and 1000-hour fuels are at 7% and 9%. At these values, all dead fuels are available for consumption.

Topography- Topography in the fire area is dominated by the Kern River. This river drainage runs north/south and is steep and narrow, roughly bisecting the fire area down the middle. Terrain has played a central role in fire spread, taking the predominantly SW flow and directing it in every way imaginable across the fire area.

Parameters for Behave Run: 1hr:4, 10hr:5, 100hr:7 Temp: 100 Slope avg: 50%

	Max Rate of Spread	Max Flame Lengths	Spotting Distances	POI
GR2	80-100 ch/hr.	6-10'	½ mi	80%
GS2	50-70 ch/hr.	6-10'	½ mi	80%
TU5	22-28 ch/hr.	11-15'	½ mi	85%
TL6	12-18 ch/hr.	3-6'	¼ mi	80%

SPECIFIC

All Divisions: Expect increase in fire behavior with forecasted increased instability and temperatures today. Expect active surface fire along with single tree and group tree torching. Spotting is likely today as probability of ignition in all fuel models are above 75%. Expect burning to increase around 1000, peak around 1700, before moderating after sunset.

Div A/B – The westerly winds across the Kern Canyon along with the terrain features will have a favorable influence in slowing the fire spread to the west. **Be heads up!** The fire has the potential to move south into the Freeman Creek Sequoia Grove.

Div Y/Z – With today's forecasted temperatures and instability, any undetected spot fires could become established quickly.

Div X/U – As you progress with direct attack tactics, be aware of aligning winds and terrain. .

Div N – The fire will continue to move east today, potentially impacting Beach Meadows to the east by the end of the shift.

Shotgun Fire The fire slowly continues to progress to the drainages and find available fuel. If the fire finds its way across the creek bottom, expect a slope reversal and short terrain/ wind aligned runs

AIR OPERATIONS

Smoke should lift around 1000 to support air missions.

SAFETY

Stay situational aware! Conditions have remained the same over the past week and now we are going to see changes in the weather. Make a point to communicate changes to those around you.

DIVISION ASSIGNMENT LIST				Branch		Division/Group			
Incident Name				I		ALPHA			
SQF Complex				Operational Period					
				Date: 9/6/2020 to 9/7/2020		Time: 0600-0600			
Operations Personnel									
Operations Chief	Brent Olson, Scott Schrenk Andy James (t) Shawn Borgen (t)			Branch Director		Justin Kaber 406-250-1455			
Air Operations	Dennis Morton Dan Sepulveda			Division/Group Supervisor		Kate Airhart 406-360-0506			
Safety Officer	Gerald Vickers Dan Cassidy								
Resources Assigned This Period									
Strike Team/Task Force/ Resource Designator	Req#	Last Shift	Leader	# Persons	Drop Off Point /Time	Pick Up Point / Time			
HC1 Fulton	C-67	9/15	Josh Acosta	20	Whitsett Base 0600	Whitsett Base 2100			
HC1 Vista Grande	C-54	9/12	Jess Estrada	19	Whitsett Base 0600	Whitsett Base 2100			
WFM Sequoia	O-266	9/12	Aaron Woodyard	8	Whitsett Base 0600	Whitsett Base 2100			
HC2 Scorpions 3	C-13	9/8	Dileep Bobba	22	Whitsett Base 0600	Whitsett Base 2100			
TFLD	O-259	9/11	Isaac Solomon	1	Whitsett Base 0600	Whitsett Base 3100			
TFLD (t)	O-336	9/14	Scott Turner	1	Whitsett Base 0600	Whitsett Base 2100			
HEQB	O-415	9/14	Joshua Perkins	1	Whitsett Base 0600	Whitsett Base 2100			
ENG6 High Desert	E-137	9/12	Thomas Hanks	3	Whitsett Base 0600	Whitsett Base 2100			
ENG6 Red Dog	E-167	9/12	Tim England	2	Whitsett Base 0600	Whitsett Base 2100			
WT2 K&B	E-48	9/7	Mike Morgan	1	Whitsett Base 0600	Whitsett Base 2100			
WT2 Dust Busters	E-49	9/10	Nathan Stutz	2	Whitsett Base 0600	Whitsett Base 2100			
WT2 49ers	E-50	9/10	Steve Smith	1	Whitsett Base 0600	Whitsett Base 2100			
WT2 SQF WT2	E-114	9/9	Jaime Ayaly	2	Whitsett Base 0600	Whitsett Base 2100			
WT2 CNF WT222	E-145	9/12	Andrew Peterson	2	Whitsett Base 0600	Whitsett Base 2100			
SKG2 Alvord Fire	E-180	9/16	Justin Davis	1	Whitsett Base 0600	Whitsett Base 2100			
SKG2 Alvord Fire	E-194	9/16	Bernard Saul	2	Whitsett Base 0600	Whitsett Base 2100			
DO22 Shannon Bros.	E-44	9/7	Bill Shannon	1	Whitsett Base 0600	Whitsett Base 2100			
DO22 Westlund	E-139	9/12	Alan Westlund	2	Whitsett Base 0600	Whitsett Base 2100			
DO22 ANF 12	E-142	9/10	Doug Lander	2	Whitsett Base 0600	Whitsett Base 2100			
EXC2 Sandborg	E-179	9/13	Chuck Sandborg	2	Whitsett Base 0600	Whitsett Base 2100			
EXC2 Denis Equip	E-188	9/15	Anthony Pezzi	2	Whitsett Base 0600	Whitsett Base 2100			
GRD2 Kirklang	E-97	9/9	Todd Adams	2	Whitsett Base 0600	Whitsett Base 2100			
CHIP1 Wyeas Forestry	E-192	9/16	Ryan Grigsby	2	Whitsett Base 0600	Whitsett Base 2100			
MAST Shannon Bros	E-186			1	Whitsett Base 0600	Whitsett Base 2100			
FALM Tree Guys	O-178	9/9	Chase Bishop	2	Whitsett Base 0600	Whitsett Base 2100			
SOFR	O-183	9/10	Joseph Fowler	1	Whitsett Base 0600	Whitsett Base 2100			
SOFR (t)	O-171	9/8	Eric Klemowicz	1	Whitsett Base 0600	Whitsett Base 2100			
REMS	O-332	9/13	REMS	1	Whitsett Base 0600	Whitsett Base 2100			
REAF	O-50	9/6	Ernest Wingate	1	Whitsett Base 0600	Whitsett Base 2100			
REAF	O-277	9/11	Scott Dailey	1	Whitsett Base 0600	Whitsett Base 2100			
REAF (t)	O-395	9/17	Ian Woodruff	1	Whitsett Base 0600	Whitsett Base 2100			
REAF (t)	O-398	9/17	Noah Hirsch	1	Whitsett Base 0600	Whitsett Base 2100			
Work Assignments									
<p>Task: Evaluate fire progression to the west in Bravo and develop and implement tactics to prevent spread outside of the wilderness to the south. Hold the current fire perimeter and construct direct line as appropriate between 31E14 trail and Jerky Meadow. Construct line from Jerky Meadow to Div A / Z break.</p> <p>Purpose: Keep the fire spread east of Lloyd Meadow Road, north of Ponderosa and Mountain Home community</p> <p>End State: Limit fire spread into additional values at risk to protect communities and infrastructure.</p>									
Special Instructions									
<ul style="list-style-type: none"> Personnel to notify DIVS of potentially sensitive cultural materials. Castle Ambulance 1 staged at Whitsett Base Camp. Castle Ambulance 2 stage at R Ranch Spike. Castle REMS available to all DIVS. Prioritization of all control or containment actions taken during the operational period in this Division will be at the discretion of the DIVS. Actions may have to be taken by the DIVS that are not enumerated in today's IAP. These actions would be a result of a significant change in actual or expected fire behavior over and above that anticipated at the time the IAP was prepared. These actions will be coordinated with and approved by the OSC whenever possible. 									
Division/Group Communication Summary									
Function COMMAND NIFC T1	Channel	Frequenc y RX	Frequenc y TX	TONE RX	TONE TX	Function A/G TAC A/G CMD	Channel	Frequency RX	Frequency TX
	1	170.0000	166.6750	151.4	151.4		13	172.3500	172.3500
	5	168.0500	168.0500	151.4	151.4		14	169.1500	169.1500
Prepared by Anya Moline – RESL		Approved By Robin Jermyn - PSC				Date 9/5/2020		Time 1800	

DIVISION ASSIGNMENT LIST			Branch			Division/Group			
Incident Name			I			BRAVO			
SQF Complex			Operational Period						
			Date: 9/6/2020 to 9/7/2020			Time: 0600-0600			
Operations Personnel									
Operations Chief	Brent Olson, Scott Schrenk Andy James (t) Shawn Borgen (t)			Branch Director			Justin Kaber 406-250-1455		
Air Operations	Dennis Morton Dan Sepulveda			Division/Group Supervisor			Rocky Wagoner 406-531-9809		
Safety Officer	Gerald Vickers Dan Cassidy								
Resources Assigned This Period									
Strike Team/Task Force/ Resource Designator	Req#	Last Shift	Leader	# Persons	Drop Off Point /Time	Pick Up Point / Time			
HC1 Dalton	C-53	9/11	Scott Gorman	19	Whitsett Base 0600	Whitsett Base 2100			
HC1 Sierra	C-57	9/13	Alan Roby	21	Whitsett Base 0600	Whitsett Base 2100			
HC1 Cherokee	C-83	9/17	Josh Tester	20	Whitsett Base 0600	Whitsett Base 2100			
WFM Whiskey Flat	O-574	9/18	Travis Clendenen	9	Whitsett Base 0600	Whitsett Base 2100			
TFLD	O-582	9/18	Robert Bundy	1	Whitsett Base 0600	Whitsett Base 2100			
ENG3 Kinsley	E-249	9/18	Kurt Edwards	1	Whitsett Base 0600	Whitsett Base 2100			
ENG6 Buffalo	E-132	9/13	Gregg Webster	3	Whitsett Base 0600	Whitsett Base 2100			
ENG6 R Construction	E-166	9/12	Richard Deroche	3	Whitsett Base 0600	Whitsett Base 2100			
DOZ2 Shannon Bros	E-45	9/7	John Shannon	1	Whitsett Base 0600	Whitsett Base 2100			
DOZ2 Conner	E-83	9/8	Tim Conner	1	Whitsett Base 0600	Whitsett Base 2100			
FALM Timbersmith	O-177	9/9	Ryan Deniz	2	Whitsett Base 0600	Whitsett Base 2100			
SOFR	O-389	9/16	James Gregory	1	Whitsett Base 0600	Whitsett Base 2100			
SOFR(t)	O-511	9/17	Augie Barreda	1	Whitsett Base 0600	Whitsett Base 2100			
EMPF	O-340	9/8	Ron Spellman	1	Whitsett Base 0600	Whitsett Base 2100			
EMPF	O-341	9/8	John Sitar	1	Whitsett Base 0600	Whitsett Base 2100			
Work Assignments									
<p>Task: Scout and assess opportunities for containment line to limit fire spread to the south and west. Assess Jordan Peak Lookout and White Meadow Cabin for structure protection needs. Construct indirect containment line as needed extending from the Clicks Creek Trailhead northwest into the Summit Trail.</p> <p>Purpose: To limit fire spread to the south and west and prevent impacts to surrounding communities.</p> <p>End State: Impacts to local communities and infrastructure was kept to a minimum.</p>									
Special Instructions									
<ul style="list-style-type: none"> Personnel to notify DIVS of potentially sensitive cultural materials. Castle Ambulance 1 staged at Whitsett Base Camp. Castle Ambulance 2 stage at R Ranch Spike. Castle REMS available to all DIVS. Prioritization of all control or containment actions taken during the operational period in this Division will be at the discretion of the DIVS. Actions may have to be taken by the DIVS that are not enumerated in today's IAP. These actions would be a result of a significant change in actual or expected fire behavior over and above that anticipated at the time the IAP was prepared. These actions will be coordinated with and approved by the OSC whenever possible. 									
Division/Group Communication Summary									
Function	Channel	Frequency RX	Frequency TX	TONE RX	TONE TX	Function	Channel	Frequency RX	Frequency TX
COMMAND	1	170.0000	166.6750	151.4	151.4	A/G TAC	13	172.3500	172.3500
NIFC T3	6	168.6000	168.6000	151.4	151.4	A/G CMD	14	169.1500	169.1500
Prepared by Anya Moline – RESL		Approved By Robin Jermyn - PSC				Date 9/5/2020		Time 1800	

DIVISION ASSIGNMENT LIST				Branch		Division/Group			
Incident Name				I		YANKEE / ZULU			
SQF Complex				Operational Period					
				Date: 9/6/2020 to 9/7/2020			Time: 0600-0600		
Operations Personnel									
Operations Chief	Brent Olson, Scott Schrenk Andy James (t) Shawn Borgen (t)			Branch Director		Justin Kaber 406-250-1455			
Air Operations	Dennis Morton Dan Sepulveda			Division/Group Supervisor		Isaac Naylor			
Safety Officer	Gerald Vickers Dan Cassidy								
Resources Assigned This Period									
Strike Team/Task Force/ Resource Designator	Req#	Last Shift	Leader	# Persons	Drop Off Point /Time	Pick Up Point / Time			
WFM Groveland	O-186	9/9	Timothy Markin	8	Whitsett Base 0600	Whitsett Base 2100			
ENG3 A1Fire E13	E-79	9/11	Wyatt Lawrence	2	Whitsett Base 0600	Whitsett Base 2100			
ENG4 Troy	E-134	9/12	Dan Hokanson	3	Whitsett Base 0600	Whitsett Base 2100			
ENG6 Flame Chaser	E-133	9/14	Duane Many Hides	3	Whitsett Base 0600	Whitsett Base 2100			
WT2 Valley Farms	E-88	9/8	Jeff Bates	1	Whitsett Base 0600	Whitsett Base 2100			
WT2 Central 25	E-146	9/13	Jeff Nevins	2	Whitsett Base 0600	Whitsett Base 2100			
DOZ2 STF 51	E-118	9/6	Mike Nott	2	Whitsett Base 0600	Whitsett Base 2100			
FALM Timbersmith	O-176	9/9	Keenan Smith	2	Whitsett Base 0600	Whitsett Base 2100			
SOFR (t)	O-234	9/12	Dwayne Johnson	1	Whitsett Base 0600	Whitsett Base 2100			
SOFR (t)	O-270	9/14	Philip Bordelon	1	Whitsett Base 0600	Whitsett Base 2100			
EMPF	O-92	9/6	Robert Abbruzzese	1	Whitsett Base 0600	Whitsett Base 2100			
EMTF	O-579	9/17	Patrick Garcia	1	Whitsett Base 0600	Whitsett Base 2100			
AMBU	E-170	9/13	Castle 3	1	Whitsett Base 0600	Whitsett Base 2100			
REAF	O-141	9/7	Marcos Rios	1	Whitsett Base 0600	Whitsett Base 2100			
REAF	O-228	9/12	Michael Mcgraw	1	Whitsett Base 0600	Whitsett Base 2100			
REAF	O-229	9/12	Lanny Flaherty	1	Whitsett Base 0600	Whitsett Base 2100			
REAF	O-231	9/11	Donna Peppin	1	Whitsett Base 0600	Whitsett Base 2100			
Work Assignments									
Task: Continue mop up appropriate securing the entire division, keeping firefighter safety in consideration. Monitor the southwest corner of the Division, focusing on the east side of the Kern River.									
Purpose: Limit fire spread toward values at risk on the west side of the fire.									
End State: Private property and infrastructure is protected, natural resource impacts are limited, and there are no accidents or injuries to firefighters or the public.									
Special Instructions									
<ul style="list-style-type: none"> Personnel to notify DIVS of potentially sensitive cultural materials. Castle Ambulance 1 staged at Whitsett Base Camp. Castle Ambulance 2 stage at R Ranch Spike. Castle REMS available to all DIVS. Crews be prepared to spike. Prioritization of all control or containment actions taken during the operational period in this Division will be at the discretion of the DIVS. Actions may have to be taken by the DIVS that are not enumerated in today's IAP. These actions would be a result of a significant change in actual or expected fire behavior over and above that anticipated at the time the IAP was prepared. These actions will be coordinated with and approved by the OSC whenever possible. 									
Division/Group Communication Summary									
Function	Channel	Frequency RX	Frequency TX	TONE RX	TONE TX	Function	Channel	Frequency RX	Frequency TX
COMMAND	1	170.0000	166.6750	151.4	151.4	A/G TAC	13	172.3500	172.3500
NIFC T6	8	166.7750	166.7750	151.4	151.4	A/G CMD	14	169.1500	169.1500
Prepared by Anya Moline – RESL	Approved By Robin Jermyn – PSC			Date 9/5/2020			Time 1800		

DIVISION ASSIGNMENT LIST				Branch		Division/Group			
Incident Name				V		LIMA			
SQF Complex				Operational Period					
				Date: 9/6/2020 to 9/7/2020		Time: 0600-0600			
Operations Personnel									
Operations Chief	Brent Olson, Scott Schrenk, Andy James (t) Shawn Borgen (t)			Branch Director		Ryan Butler / Logan Sanders (t) 406-250-0375 / 209-613-4951			
Air Operations	Dennis Morton Dan Sepulveda			Division/Group Supervisor		Mike King / Graydon Galloway 406-370-2121 / 208-596-5345			
Safety Officer	Gerald Vickers Dan Cassidy								
Resources Assigned This Period									
Strike Team/Task Force/ Resource Designator	Req#	Last Shift	Leader	# Persons	Drop Off Point /Time	Pick Up Point / Time			
HC1 Golden Eagles	C-55	9/14	Robert Villegas	19	Troy Meadow 0600	Troy Meadow 2100			
WFM Mammoth	O-49	9/6	Jeffrey Karl	8	Troy Meadow 0600	Troy Meadow 2100			
ENG6 CNF E473	E-263	9/19	Allen Tennant	5	Troy Meadow 0600	Troy Meadow 2100			
SKD McKeller	E-214	9/17	Harley Toller	2	Troy Meadow 0600	Troy Meadow 2100			
DOZ2	E-5	9/6	Danny Lewis	3	Troy Meadow 0600	Troy Meadow 2100			
DOZ2	E-140	9/11	David Krisher	2	Troy Meadow 0600	Troy Meadow 2100			
Inyo Pack String	E-56	9/7	Lee Roesser	3	Troy Meadow 0600	Troy Meadow 2100			
FALM Under Dog	O-596	9/18	Gary Balmain	2	Troy Meadow 0600	Troy Meadow 2100			
SOF2	O-496	9/16	Tom Nash	1	Troy Meadow 0600	Troy Meadow 2100			
SOFR (t)	O-393	9/16	Jacob Broiller	1	Troy Meadow 0600	Troy Meadow 2100			
REAF	O-228	9/12	Michael McGraw	1	Troy Meadow 0600	Troy Meadow 2100			
REAF	O-231	9/11	Donna Peppin	1	Troy Meadow 0600	Troy Meadow 2100			
REAF	O-252	9/11	Adam Toomey	1	Troy Meadow 0600	Troy Meadow 2100			
REMS 2	E-217	9/19	Ray Storm	6	Troy Meadow 0600	Troy Meadow 2100			
Work Assignments									
Task: Continue indirect fire line, look for opportunities to go direct towards Division X, provide point protection as needed.									
Purpose: Limit impact to values at risk on northern edge within wilderness, limit fire spread on eastern edge of fire.									
End State: Values at risk in wilderness are not impacted, spread of fire to east is limited in Divisions L and N									
Special Instructions									
<ul style="list-style-type: none"> Personnel to notify DIVS of potentially sensitive cultural materials. Castle Ambulance 1 staged at Whitsett Base Camp. Castle Ambulance 2 stage at R Ranch Spike. Castle REMS available to all DIVS. Prioritization of all control or containment actions taken during the operational period in this Division will be at the discretion of the DIVS. Actions may have to be taken by the DIVS that are not enumerated in today's IAP. These actions would be a result of a significant change in actual or expected fire behavior over and above that anticipated at the time the IAP was prepared. These actions will be coordinated with and approved by the OSC whenever possible. 									
Division/Group Communication Summary									
Function	Channel	Frequency RX	Frequency TX	TONE RX	TONE TX	Function	Channel	Frequency RX	Frequency TX
COMMAND	3	172.5500	162.1875	151.4	151.4	A/G TAC	13	172.3500	172.3500
NIFC T7	9	168.2500	168.2500	151.4	151.4	A/G CMD	14	169.1500	169.1500
Prepared by Anya Moline - RESL		Approved By Robin Jermyn - PSC				Date 9/5/2020		Time 1800	

DIVISION ASSIGNMENT LIST			Branch			Division/Group			
Incident Name			V			X-RAY			
SQF Complex			Operational Period						
			Date: 9/6/2020 to 9/7/2020			Time: 0600-0600			
Operations Personnel									
Operations Chief	Brent Olson, Scott Schrenk Andy James (t) Shawn Borgen (t)		Branch Director			Ryan Butler / Logan Sanders (t) 406-250-0375 / 209-613-4951			
Air Operations	Dennis Morton Dan Sepulveda		Division/Group Supervisor			Stryker Clark 406-546-7405			
Safety Officer	Gerald Vickers Dan Cassidy								
Resources Assigned This Period									
Strike Team/Task Force/ Resource Designator	Req#	Last Shift	Leader	# Persons	Drop Off Point /Time	Pick Up Point / Time			
HC1 Los Padres	C-56	9/13	Matt Aoki	19	Troy Meadow 0600	Troy Meadow 2100			
HC1 Bear Divide	C-66	9/13	Josh Thomas	19	Troy Meadow 0600	Troy Meadow 2100			
HC1 Crane Valley	C-73	9/16	Jose Rivera	18	Troy Meadow 0600	Troy Meadow 2100			
EMPF	O-92	9/7	Bryan Swenson	1	Troy Meadow 0600	Troy Meadow 2100			
EMPF	O-233	9/10	Silas Fischer	1	Troy Meadow 0600	Troy Meadow 2100			
EMPF	O-91	9/15	Royce Copeman	1	Troy Meadow 0600	Troy Meadow 2100			
EMPF	O-342	9/15	Yoshimi Toyota	1	Troy Meadow 0600	Troy Meadow 2100			
Work Assignments									
<p>Task: Coordinate with resources west of the Kern River to contain fire spread east of the Kern River. Utilize ground and air operations assets to construct helispots within division to allow crews to be logistically supported. Secure fires edge from the east side of the Kern river to the east utilizing direct and indirect tactics. Initiate firing operations as needed.</p> <p>Purpose: Limit fire spread to the south and east. Crews are supported with supplies in order to progress east with line construction.</p> <p>End State: Fire progression to the east and south is contained.</p>									
Special Instructions									
<ul style="list-style-type: none"> Personnel to notify DIVS of potentially sensitive cultural materials. Castle Ambulance 1 staged at Whitsett Base Camp. Castle Ambulance 2 stage at R Ranch Spike. Castle REMS available to all DIVS. Prioritization of all control or containment actions taken during the operational period in this Division will be at the discretion of the DIVS. Actions may have to be taken by the DIVS that are not enumerated in today's IAP. These actions would be a result of a significant change in actual or expected fire behavior over and above that anticipated at the time the IAP was prepared. These actions will be coordinated with and approved by the OSC whenever possible. 									
Division/Group Communication Summary									
Function	Channel	Frequency RX	Frequency TX	TONE RX	TONE TX	Function	Channel	Frequency RX	Frequency TX
COMMAND	2	170.6875	166.5750	151.4	151.4	A/G TAC	13	172.3500	172.3500
NIFC T5	7	166.7250	166.7250	151.4	151.4	A/G CMD	14	169.1500	169.1500
Prepared by		Approved By				Date		Time	
Anya Moline – RESL		Robin Jermyn - PSC				9/5/2020		1800	

DIVISION ASSIGNMENT LIST				Branch		Division/Group				
Incident Name SQF Complex				STRUCTURE		BLACK ROCK / BACKCOUNTRY				
						Operational Period				
				Date: 9/6/2020 to 9/7/2020		Time: 0600-0600				
Operations Personnel										
Operations Chief		Brent Olson, Scott Schrenk Andy James (t) Shawn Borgen (t)			Branch Director		Drew Daily 405-431-9476			
Air Operations		Dennis Morton Dan Sepulveda			Division/Group Supervisor		Geoff Farinholt / Richard Baker (t) 406-529-5671			
Safety Officer		Gerald Vickers Dan Cassidy								
Division/Group Supervisor										
Strike Team/Task Force/ Resource Designator		Req#	Last Shift	Leader	# Persons	Drop Off Point /Time	Pick Up Point / Time			
ENG3 SQF E-341		E-216	9/15		5	Troy Meadows 0600	Troy Meadows 2100			
ENG3 Gonzales		E-256	9/18	Steve Reason	3	Troy Meadows 0600	Troy Meadows 2100			
ENG5 Cate Land Fire		E-203	9/16		3	Troy Meadows 0600	Troy Meadows 2100			
ENG6 White Horse		E-199	9/15	Jason McGaughy	3	Troy Meadows 0600	Troy Meadows 2100			
ENG6 Dillon Fire		E-204	9/7	Riley Leingang	3	Troy Meadows 0600	Troy Meadows 2100			
ENG6 RandR		E-205	9/7	Mike Cox	3	Troy Meadows 0600	Troy Meadows 2100			
CHIP		E-185	9/18	Dave Lytle	2	Troy Meadows 0600	Troy Meadows 2100			
TSP		O-236	9/10	George Bowan	1	Troy Meadows 0600	Troy Meadows 2100			
SOF2		O-394	9/12	Gary Kemp	1	Troy Meadows 0600	Troy Meadows 2100			
EMPF		O-581	9/18	Joshua Terry	1	Troy Meadows 0600	Troy Meadows 2100			
AMBU		E-52	9/7	Castle 2	1	Troy Meadows 0600	Troy Meadows 2100			
EMPF		O-497	9/15	Tommy Kavanaugh	1	Troy Meadows 0600	Troy Meadows 2100			
EMPF		O-495	9/16	Scott Hamilton	1	Troy Meadows 0600	Troy Meadows 2100			
EMPF		O-551	9/16	Matthew Heckman	1	Troy Meadows 0600	Troy Meadows 2100			
Work Assignments										
Task: Develop and implement structure protection plan for Black Rock, Bonita Meadow, West Meadow and back country/wilderness structures. Recon Manatchee area.										
Purpose: Protect values at risk from wildfire impacts.										
End State: Values at risk and communities are able to operate in pre-fire condition. A plan to protect values at risk is Developed for the Manatchee.										
Special Instructions										
<ul style="list-style-type: none"> Personnel to notify DIVS of potentially sensitive cultural materials. Castle Ambulance 1 staged at Whitsett Base Camp. Castle Ambulance 2 stage at R Ranch Spike. Castle REMS available to all DIVS. Prioritization of all control or containment actions taken during the operational period in this Division will be at the discretion of the DIVS. Actions may have to be taken by the DIVS that are not enumerated in today's IAP. These actions would be a result of a significant change in actual or expected fire behavior over and above that anticipated at the time the IAP was prepared. These actions will be coordinated with and approved by the OSC whenever possible. 										
Division/Group Communication Summary										
Function	Channel	Frequency RX	Frequency TX	TONE RX	TONE TX	Function	Channel	Frequen cy RX	Frequency TX	
COMMAND	2	170.6875	166.5750	151.4	151.4	A/G TAC	13	172.3500	172.3500	
COMMAND	3	172.5500	162.1875	151.4	151.4	A/G CMD	14	169.1500	169.1500	
VFIRE 25	12	154.2875	154.2875	156.7	156.7					
Prepared by Anya Moline – RESL		Approved By Robin Jermyn - PSC				Date 9/5/2020			Time 1800	

DIVISION ASSIGNMENT LIST		Branch	Division/Group
Incident Name		STRUCTURE	NELSON
SQF Complex		Operational Period	
		Date: 9/6/2020 to 9/7/2020	Time: 0600-0600
Operations Personnel			
Operations Chief	Brent Olson, Scott Schrenk, Andy James (t) Shawn Borgen (t)	Branch Director	Drew Daily 405-431-9476
Air Operations	Dennis Morton Dan Sepulveda	Division/Group Supervisor	Hunter Seaborn Bell, III 406-670-5633
Safety Officer	Gerald Vickers Dan Cassidy		

Resources Assigned This Period						
Strike Team/Task Force/ Resource Designator	Req#	Last Shift	Leader	# Persons	Drop Off Point /Time	Pick Up Point / Time
S/T 5810A	E-281	9/18			Whitsett Base 0600	Whitsett Base 2100
ENG3 Engine #14	E-252	9/18	Jacob Vavricka	3	Whitsett Base 0600	Whitsett Base 2100
ENG3 J3 Contract	E-253	9/18	Wesley Wallace	3	Whitsett Base 0600	Whitsett Base 2100
ENG3 Namingha	E-258	9/18	Darren Namingha	3	Whitsett Base 0600	Whitsett Base 2100
ENG6 Carlsbad	E-259	9/18			Whitsett Base 0600	Whitsett Base 2100
ENG6 Sandoval Fire	E-260	9/18	Harris Toya	3	Whitsett Base 0600	Whitsett Base 2100
ENG6 Farmington	E-261	9/18	Duane Bair	2	Whitsett Base 0600	Whitsett Base 2100
ENG6 Sac Mtn 218	E-262	9/18	Barbara Stephens	3	Whitsett Base 0600	Whitsett Base 2100
WT1 Oto WT139	E-282	9/18	Keith Smith	1	Whitsett Base 0600	Whitsett Base 2100
WT1 Oes 42	E-283	9/18	Robin Serna	2	Whitsett Base 0600	Whitsett Base 2100
WT1	E-285	9/18	Richard Murillo	2	Whitsett Base 0600	Whitsett Base 2100
WT2 Davis	E-236	9/18	James Davis	1	Whitsett Base 0600	Whitsett Base 2100
WT2 Trahan	E-237	9/18	Nicholas Trahan	1	Whitsett Base 0600	Whitsett Base 2100
SOF2	O-394	9/12	Gary Kemp	1	Whitsett Base 0600	Whitsett Base 2100

Work Assignments

Task: Establish a structure protection plan for Cedar Slope and Camp Nelson as well as adjoining values at risk.

Purpose: Protect values at risk from wildfire impacts.

End State: Values at risk and communities are able to operate in pre-fire condition

- Special Instructions**
- Personnel to notify DIVS of potentially sensitive cultural materials.
 - Castle Ambulance 1 staged at Whitsett Base Camp. Castle Ambulance 2 stage at R Ranch Spike. Castle REMS available to all DIVS.
 - Prioritization of all control or containment actions taken during the operational period in this Division will be at the discretion of the DIVS. Actions may have to be taken by the DIVS that are not enumerated in today's IAP. These actions would be a result of a significant change in actual or expected fire behavior over and above that anticipated at the time the IAP was prepared. These actions will be coordinated with and approved by the OSC whenever possible.

Division/Group Communication Summary									
Function	Channel	Frequency RX	Frequency TX	TONE RX	TONE TX	Function	Channel	Frequency RX	Frequency TX
COMMAND	1	170.0000	166.6750	151.4	151.4	A/G TAC	13	172.3500	172.3500
R5 T6	11	168.2375	168.2375	151.4	151.4	A/G CMD	14	169.1500	169.1500
Prepared by Anya Moline – RESL	Approved By Robin Jermyn - PSC					Date 9/5/2020			Time 1800

DIVISION ASSIGNMENT LIST		Branch		Division/Group					
Incident Name		STRUCTURE		PONDEROSA					
SQF Complex		Operational Period							
		Date: 9/6/2020 to 9/7/2020		Time: 0600 to 0600					
Operations Personnel									
Operations Chief	Brent Olson, Scott Schrenk Andy James (t) Shawn Borgen (t)		Branch Director		Drew Daily 405-431-9476				
Air Operations	Dennis Morton Dan Sepulveda		Division/Group Supervisor		Brad Allen 09/10				
Safety Officer	Gerald Vickers Dan Cassidy								
Resources Assigned This Period									
Strike Team/Task Force/ Resource Designator	Req#	Last Shift	Leader	# Persons	Drop Off Point /Time	Pick Up Point / Time			
HC2 Dust Busters	C-80	9/17	Harper Resewehr	20	Whitsett Base 0600	Whitsett Base 2100			
S/T 5181F ENG6	E-238	9/18	Kevin Riggi	16	Whitsett Base 0600	Whitsett Base 2100			
S/T 5809C ENG3	E-241	9/18	Jason Elizondo	16	Whitsett Base 0600	Whitsett Base 2100			
SOF2	O-394	9/12	Gary Kemp	1	Whitsett Base 0600	Whitsett Base 2100			
Work Assignments									
Task: Implement structure defense for Ponderosa and adjoining communities.									
Purpose: Protect values at risk from spreading fire.									
End State: Value at risk and communities are able to operate in pre-fire condition									
Special Instructions									
<ul style="list-style-type: none"> Personnel to notify DIVS of potentially sensitive cultural materials. Castle Ambulance 1 staged at Whitsett Base Camp. Castle Ambulance 2 stage at R Ranch Spike. Castle REMS available to all DIVS. Prioritization of all control or containment actions taken during the operational period in this Division will be at the discretion of the DIVS. Actions may have to be taken by the DIVS that are not enumerated in today's IAP. These actions would be a result of a significant change in actual or expected fire behavior over and above that anticipated at the time the IAP was prepared. These actions will be coordinated with and approved by the OSC whenever possible. 									
Division/Group Communication Summary									
Function	Channel	Frequency RX	Frequency TX	TONE RX	TONE TX	Function	Channel	Frequency RX	Frequency TX
COMMAND	1	170.0000	166.6750	151.4	151.4	A/G TAC	13	172.3500	172.3500
COMMAND	2	170.6875	166.5750	151.4	151.4	A/G CMD	14	169.1500	169.1500
VFIRE 25	12	154.2875	154.2875	156.7	156.7				
Prepared by Anya Moline – RESL		Approved By Robin Jermyn – PSC				Date 9/5/2020		Time 1800	

DIVISION ASSIGNMENT LIST			Branch			Division/Group				
Incident Name						NIGHT				
SQF COMPLEX			Operational Period							
			Date: 9/6/2020 to 9/7/2020			Time: 1800-0900				
Operations Personnel										
Operations Chief		Brent Olson, Scott Schrenk, Andy James (t) Shawn Borgen (t)			Branch Director					
Safety Officer		Gerald Vickers, Dan Cassidy			Division/Group Supervisor		Mark Brown 207-233-9348			
Resources Assigned This Period										
Strike Team/Task Force/ Resource Designator	Req#	Last Shift	Leader	# Persons	Drop Off Point /Time	Pick Up Point / Time				
ENG3 OVD E3132	E-135	9/11	Phillip Lewis	4	Whitsett Base 0600	Whitsett Base 2100				
ENG3 STF E346	E-136	9/11	Michael Scheu	4	Whitsett Base 0600	Whitsett Base 2100				
ENG6 Blue Sky E8	E-63	9/11	Alex Parker	3	Whitsett Base 0600	Whitsett Base 2100				
ENG6 Cahoon 1	E-64	9/11	Blane Fifield	3	Whitsett Base 0600	Whitsett Base 2100				
ENG6 Cahoon 2	E-65	9/11	Randy Mattson	3	Whitsett Base 0600	Whitsett Base 2100				
ENG6 E696	E-72	9/9	William McDarment	3	Whitsett Base 0600	Whitsett Base 2100				
ENG6 Peanut Pie E2	E-78	9/11	Wayde Visser	3	Whitsett Base 0600	Whitsett Base 2100				
WT2 INF WT21	E-90	9/11	Cameron Ferrante	2	Whitsett Base 0600	Whitsett Base 2100				
WT2 ANF 237	E-113	9/10	Francisco Carrillo	2	Whitsett Base 0600	Whitsett Base 2100				
SOFR	O-213	9/11	Paul Tadlock	1	Whitsett Base 0600	Whitsett Base 2100				
AMBU	E-46	9/19	Castle1	2	Whitsett Base 0600	Whitsett Base 2100				
EMTF	O-580	9/17	Steve Devincinzi	1	Whitsett Base 0600	Whitsett Base 2100				
Work Assignments										
<p>Task: Patrol and monitor accessible fire area, support water handling operations from prior shifts, mop-up as appropriate based on firefighter safety.</p> <p>Purpose: Limit fire spread to additional values at risk.</p> <p>End State: Fire spread limited to existing fire perimeter.</p>										
Special Instructions										
<ul style="list-style-type: none"> Personnel to notify DIVS of potentially sensitive cultural materials. Castle Ambulance 1 staged at Whitsett Base Camp. Castle Ambulance 2 stage at R Ranch Spike. Castle REMS available to all DIVS. Prioritization of all control or containment actions taken during the operational period in this Division will be at the discretion of the DIVS. Actions may have to be taken by the DIVS that are not enumerated in today's IAP. These actions would be a result of a significant change in actual or expected fire behavior over and above that anticipated at the time the IAP was prepared. These actions will be coordinated with and approved by the OSC whenever possible. 										
Division/Group Communication Summary										
Function	Channel	Frequency RX	Frequency TX	TONE RX	TONE TX	Function	Channel	Frequency RX	Frequency TX	
COMMAND	See 205					A/G TAC	13	172.3500	172.3500	
NIFC T1	5	168.0500	168.0500	151.4	151.4	A/G CMD	14	169.1500	169.1500	
Prepared by Anya Moline – RESL		Approved By Robin Jermyn - PSC				Date 9/5/2020			Time 1800	

AIR OPERATIONS SUMMARY 220		Prepared By: Daniel Sepulveda	Prepared: 09/5/2020	Prepared Time: 1900 hrs.
1. INCIDENT NAME: SQF Complex	2. OPERATIONAL PERIOD 09/6/2020	START TIME: 0800	END TIME: 2000	SUNRISE: 0633
				SUNSET: 1916

<p>3. REMARKS (Safety Notes, Hazards, Air Operations Special Equipment, etc.):</p> <ol style="list-style-type: none"> 1. Assess mission complexity and the Benefit vs Risk of the mission. 2. Ensure visibility and winds are adequate to safely conduct flight operations. 3. Ensure safe vertical & horizontal separation between aircraft in smoky conditions. 4. Utilize check points and call in and out of the dips. 5. If you see a UAS on your division report it up the chain of command to Air Operations, it may or may not be a friendly! 6. Smoky conditions can hamper our aviation operations adhere to visibility limitations, and DO NOT be pressured into accepting a mission that you know or feel is unsafe! 	<p>4. READY ALERT AIRCRAFT: H-408 Hoist Day/Night Capable Order through Communications/Air Attack/Peppermint Helibase See Medical Plan in the IAP</p>
<p>5. TFR: 0/100 Freq: 123.725 Altitude: From the surface up to and including 12,000 feet MSL Polygon see NOTAM</p>	

6. PERSONNEL	NAME	PHONE #	7. FREQUENCIES	AM	FM	8. FIXED-WING Avail/ Type/ Make-Model/ N#/ Base
AOBD	Dennis A. Morton	406.660.2318	A/A (Fixed)	A-6	165.9875	AIRTANKERS: ORDER THRU ATGS
ASGS	Daniel Sepulveda	909.374.8944	A/A (Rotor)	A-7	123.725	
ATGS	Tony Dupree	805.450.2676	A/G (Buckets)	A-5	172.3500	ATGS Platforms: N47TT – AC690 (Dupree)
HEBM Porterville	Bob Schmidt	520-975-8923	A/G Secondary	A-58	169.1500	
HEBM(T)Porterville	Darren Stanford	909.702.8344	CALCORD/Medivacs		156.0750	Order Type 1 Helicopters through ATGS Order Air Tankers through ATGS
HEBM Peppermint	George	559.542.2301	DECK		163.100	
ATBM	Raul Contreras	559.789.0191	TOLC			*PSD DISCREET ONLY - *170.0750* A-141
			Porterville UNICOM	122.800		<i>Email daily aircraft costs to:</i> <i>castleairoperations@gmail.com</i>
			Air Guard		168.6250 (110.9 TX)	Porterville Aviation Desk: 559.782.3120

9. HELICOPTERS

FAA N#	TY	MAKE/ MODEL	BASE	START	AVAIL	REMARKS	FAA N#	TY	MAKE/ MODEL	BASE	START	AVAIL	REMARKS
948CH	1	CH-47D	PVT	0800	0830	A-31	H520	2	205 A1 ++	Black rock	0800	0830	A-79
245CH	1	BV-234	PVT	0800	0830	A-53	H-522	2	205 A1 ++	Peppermint	0800	0830	A-123
135BH	1	S-70	PVT	0800	0830	A-76	H-523	2	205 A1 ++	Peppermint	0800	0830	A-11
699RH	1	KMAX	PVT	0800	0830	A-32	H-535	3	Bell 407	PVT	0800	0830	A-39
261CG	1	S-61	PVT	0800	0830	A-8	HLCO 839PA	3	Bell 407	PVT	ETA	1000	A-146

10. TASK/ MISSION/ ASSIGNMENT (Type/ function includes: Air Tactical, Retardant, Recon, Personnel Transport, Bucket Operations, SAR, etc.)				
TYPE/FUNCTION	PRIORITY	NAME OF PERSONNEL OR CARGO (if applicable) or instructions for tactical aircraft	FLY FROM	FLY TO
ATGS		Provide continuous coverage over the fire as smoke and weather permits.	PVT	Fire
Initial Attack		Initial Attack assistance as requested.	PVT/Peppermint	IA
Medevac		** See Medical Plan in IAP – Review during Division Breakouts**	TBD	Fire
Water Drops		As needed and approved by OPS, order through ATGS/HLCO	PVT	Fire
Recon		Fire reconnaissance as requested.	PVT	Fire
PSD		As needed and approved by OPS	PVT	Fire
OTHER		(Back Haul, Re-Supply, Crew Movement) Place all orders through communications	Peppermint	Fire

Helibase, Dip Sites, Pick Up Sites, etc.		Helibase, Dip Sites, Pick Up Sites, etc.
Bridge Dip "B"	36 12.063' N, 118 27.445' W	H-20 36 10.960' N 118 29.259' W
Confluence Dip "B"	36 7.700' N, 118 26.316' W	H-21 (NEW APPROVED 9/5) 36 12.650' N 118 30.230' W
Round Dip "B"	36 12.642' N, 118 28.000' W	
Freeman "NR"	36 6.875' N, 118 27.551' W	C31 36 18.077' N 118 27.340' W
Beach Dip (X, U, N Only)	36 6.931' N, 118 17.824' W	C4 36 10.909' N 118 35.882' W
(MRB) Ranch Dip	35 58.494' N, 118 32.194' W	C11 36 0.630' N 118 23.448' W
H-1 T2	36 9.852' N, 118 26.985' W	DIV A Sling 36 10.948' N 118 29.360' W
H-2 T2	36 5.838' N, 118 26.806' W	Saddle Check 36 10.88' N 118 28.59' W
H-3 Black Rock T2	36 5.609' N, 118 15.666' W	Ridge Check 36 8.55' N 118 26.72' W
H-4 T2	36 6.128' N, 118 25.772' W	Needle Check 36 5.89' N 118 27.59' W
H-5 Piles Camp	36 08.278' N, 118 28.678' W	Lookout IP, Enter 10000' 36 3.89' N, 118 27.51' W
H-6	36 06.155' N, 118 24.808' W	Porterville HB 36 01.427' N 118 4.112' W
H-7	36 06.833' N' 118 24.373' W	Peppermint HB 36 4.355' N 118 32.500' W
H-8 (NEW APPROVED 9/5)	36 06.762' N 118 22.767' W	C31 36 18.077' N 118 27.340' W

Visibility Limitations VFR Flight Helicopters Day 1/2 statute mile Clear of clouds

Flights above ground level	Flight Permitted in Winds	
	Less than / Maximum Gust Spread	Type 3 Helicopters
More than 500' AGL	Type 1 Helicopters <50kts / Gusts: N/A	Type 2 Helicopters <50kts / Gusts: N/A
Less than 500' AGL	<40kts / Max Gust Spread: 15kts	<30kts / Max Gust Spread: 15kts

**"With the new day comes new strength and new thoughts"
-Eleanor Roosevelt**

INCIDENT RADIO COMMUNICATIONS PLAN		Incident Name	SQF COMPLEX		Date/Time Prepared	9/05/2020		Operational Period Date/Time	9/06/20 0600 9/07/20 0600		
Ch #	Function	Channel Name/Trunked Radio System Talkgroup	Assignment	RX Freq	N or W	RX Tone/NAC	TX Freq	N or W	Tx Tone/NAC	Mode A, D or M	Remarks
1	CMD REPEATER	NIFC C4	DIV A/B/Y/Z	170.0000		151.4	166.6750		151.4	A	JORDON PEAK
2	CMD REPEATER	NIFC C11	DIV X	170.6875		151.4	166.5750		151.4	A	SHERMAN PEAK
3	CMD REPEATER	NIFC C31	DIV L	172.5500		151.4	162.1875		151.4	A	COYOTE PEAK
4	FOREST REPEATER	SQF CH2	ALL/BACKUP	169.9000			165.7000		103.5	A	SQF FOREST RPTR DISPATCH
5	TACTICAL CHNL	NIFC T1	DIV A/NIGHT	168.0500		151.4	168.0500		151.4	A	SQF TACTICAL
6	TACTICAL CHNL	NIFC T3	DIV B	168.6000		151.4	168.6000		151.4	A	SQF TACTICAL
7	TACTICAL CHNL	NIFC T5	DIV X	166.7250		151.4	166.7250		151.4	A	SQF TACTICAL
8	TACTICAL CHNL	NIFC T6	DIV Y/Z	166.7750		151.4	166.7750		151.4	A	SQF TACTICAL
9	TACTICAL CHNL	NIFC T7	DIV L	168.2500		151.4	168.2500		151.4	A	SQF TACTICAL
10	TACTICAL CHNL	R5 T5	UNASSIGNED	167.1125		151.4	167.1125		151.4	A	SQF TACTICAL
11	TACTICAL CHNL	R5 T6	NELSON/LLOYD	168.2375		151.4	168.2375		151.4	A	STRUCTURE TAC
12	TACTICAL CHNL	VFIRE 25	POND/BLACK	154.2875		156.7	154.2875		156.7	A	STRUCTURE TAC
13	AIR TO GROUND	A/G TAC	A/G TAC	172.3500			172.3500			A	A/G TAC
14	AIR TO GROUND	A/G CMD	A/G CMD	169.1500			169.1500			A	A/G CMD OVERHEAD ONLY
15	TACTICAL CHNL	CALCORD	MEDEVAC	156.0750		156.7	156.0750		156.7	A	CALCORD MEDEVAC
16	AIR GUARD	AIR GUARD	EMCY ONLY	168.6250			168.6250		110.9	A	AIR GUARD
Prepared by (Communications Unit)						Incident Location SEQUOIA NF					
COMM UNIT 925.588.6879 / COM1 DUSTIN SENE 406.581.9816						County	State CA	Latitude	N	Longitude	3-7-77 W

The convention calls for frequency lists to show four digits after the decimal place, followed by either an "N" or a "W", depending on whether the frequency is narrow or wide band. Mode refers to either "A" or "D" indicating analog or digital (e.g. Project 25) or "M" indicating mixed mode. All channels are shown as if programmed in a control station, mobile or portable radio. Repeater and base stations must be programmed with the Rx and Tx reversed.

MEDICAL PLAN (ICS 206 WF)

Controlled Unclassified Information//Basic

1. Incident/Project Name		2. Operational Period						
SQF Complex		Date/Time 09/06/20 0600hrs-09/07/20 0600hrs						
3. Ambulance Services								
Name	Complete Address	Phone & EMS Frequency	Advanced Life Support (ALS) Yes No					
Imperial Ambulance (west side)	28551 Hwy 190, Porterville, CA	559-687-3309	<input checked="" type="checkbox"/>	<input type="checkbox"/>				
Hall Ambulance (east side)	1001 21st St, Bakersfield	661-327-4111	<input checked="" type="checkbox"/>	<input type="checkbox"/>				
4. Air Ambulance Services								
Name	Phone	Type of Aircraft & Capability						
Kern County FD H408	657-464-7808	Incident Primary Air Rescue, Bell 205, ALS, 24/7 Hoist						
Skylife	800-305-5433	ALS, No Hoist, requires 100x100 LZ						
CHP H40 (Fresno)	559-262-0400	Air ambulance, ALS 24/7, DAY HOIST ONLY, NIGHT STAFFING ON CALL AFTER 1800 HRS						
US COAST GUARD	REGIONAL COMMAND CENTER 510-437-3701	AIR RESCUE, HOIST 24/7, NO IN-FLIGHT MEDICAL						
5. Hospitals								
Name Complete Address	GPS Datum – WGS 84 Coordinate Standard Degrees Decimal Minutes DD° MM.MMM' N - Lat DD° MM.MMM' W - Long		Travel Time Air Gnd		Phone	Helipad Yes No		Level of Care Facility
	Lat:	Long:	Min	Gnd		Yes	No	
Kern Valley Hospital 6412 Laurel Ave Lake Isabella, CA	35 38.07'N	118 24.35'W	30	2-3Hr	760-379-2681	<input checked="" type="checkbox"/>	<input type="checkbox"/>	Emergency Room
	VHF:							
	Sierra View Med Ctr 465 W Putnam Ave Portherville, CA			30	2-4.5 hrs	559-784-1110	<input type="checkbox"/>	
Long:								
VHF:								
Kaweah Delta Health 400 W. Mineral King Ave.Visalia, CA 93291	36 19.65'N	119 17.676'W	30	2.5-5 Hr	559-624-2000	<input checked="" type="checkbox"/>	<input type="checkbox"/>	Level 2 Trauma
	Long:							
	VHF:	468.0375 PL141.3 DTMF 3211 12K lb pad limit						
Kern Medical Center 1700 MT Vernon Ave.Bakersfield, CA 93306	35 22.95'N	118 58.182'W	45	2.5-3.75 hr	661-326-2000	<input checked="" type="checkbox"/>	<input type="checkbox"/>	Level 2 Trauma
	Long:							
	VHF:	463.100 12K lb pad limit						
Community Regional Medical Center 2823 Fresno St.Fresno, CA 93721	36 44.568'N	119 47.094'W	1 hr	3-5.25 hr	559-459-6000 ER 559-459-4220	<input checked="" type="checkbox"/>	<input type="checkbox"/>	Level 1 Trauma/ Burn Center
	Long:							
	VHF:	123.05 key 5times for lights 22K lb pad limit						
6. Division Branch Group		Area Location Capability						
Div A	EMS Responders & Capability:		REMS 1 (4 personnel)					
	Equipment Available on Scene:		ALS, extrication, utv					
	Medical Emergency Channel:		Command					
	ETA for Ambulance to Scene:							
	Air:		30 mins					
	Ground:		2 hrs					
	Approved Helispot:		H20					
	Lat:							
	Long:							

MEDICAL PLAN (ICS 206 WF)

Controlled Unclassified Information//Basic

1. Incident/Project Name	2. Operational Period	
<h2>Div B</h2>	EMS Responders & Capability:	Ron Spellman, EMPF; John Sitar, EMPF
	Equipment Available on Scene:	ALS,
	Medical Emergency Channel:	Command
	ETA for Ambulance to Scene:	
	Air:	30 min
	Ground:	2 hrs
	Approved Helispot:	H 20
	Lat:	
Long:		
<h2>Div Y/Z</h2>	EMS Responders & Capability:	Robert Abbruzzese EMPF; Patrick Garcia, EMTF; Castle ambulance 3
	Equipment Available on Scene:	ALS; ALS Ambulance
	Medical Emergency Channel:	Command
	ETA for Ambulance to Scene:	
	Air:	30 min
	Ground:	2 hrs
	Approved Helispot:	H1
	Lat:	36 9.852'N
Long:	118 26.985'W	
<h2>Div X</h2>	EMS Responders & Capability:	Bryan Swenson, EMPF; Silas Fischer EMPF; Royce Copeman EMPF; Yoshimi Toyota EMPF
	Equipment Available on Scene:	ALS
	Medical Emergency Channel:	Command
	ETA for Ambulance to Scene:	
	Air:	35 mins
	Ground:	Air only
	Approved Helispot:	H2
	Lat:	36 5.838'N
Long:	118 26.806'W	
<h2>Div L</h2>	EMS Responders & Capability:	REMS 2 (6 personnel)
	Equipment Available on Scene:	ALS, extrication, utv
	Medical Emergency Channel:	Command
	ETA for Ambulance to Scene:	
	Air:	35 mins
	Ground:	3hrs
	Approved Helispot:	NONE
	Lat:	
Long:		
<h2>Blackrock Backcountry</h2>	EMS Responders & Capability:	Tommy Kavenaugh, EMPF; Matthew Heckman, EMPF; Scott Hamilton, EMPF; Joshua Terry, EMPF; Castle Ambulance 2
	Equipment Available on Scene:	ALS; ALS Ambulance
	Medical Emergency Channel:	Command
	ETA for Ambulance to Scene:	
	Air:	35 mins
	Ground:	3 hrs
	Approved Helispot:	H 3
	Lat:	36 5.609'N
Long:	118 15.666'W	
<h2>Night Div</h2>	EMS Responders & Capability:	Castle Ambulance 1; Steve DeVincenzi, EMTF
	Equipment Available on Scene:	ALS Ambulance
	Medical Emergency Channel:	Command
	ETA for Ambulance to Scene:	
	Air:	35 mins
	Ground:	2 hr
	Approved Helispot:	H 5
	Lat:	36 8.278'N
Long:	118 28.678'W	
Emily Ellick-Flettire-405-593-3369	09/05/2020	SOF2 Gerald Vickers 443-614-4358

MEDICAL PLAN (ICS 206 WF)
Controlled Unclassified Information//Basic
ASSIGNMENT-SPECIFIC MEDICAL EMERGENCY ACTION PLAN

Pre-Planning for today's assignment – See Page 2 IRPG

What are the likely hazards that could cause injuries? What kind of severe injuries?		
Who is the likely in-charge DIVS or overhead for an emergency in your assigned area today? (i.e. "Division Zulu")		
Who are the Medical personnel assigned to your part of the incident? What are their capabilities?		
Other Emergency Responders: fire dept, crash rescue, ambulance?		
Communications: Command channel, Air to Ground, Medical helicopters, local rescue/medical?		
Transportation methods available	Ground vehicle, drop point, coordinates, travel route?	
	Aircraft I.D, helispot names, coordinates? Hoist capable, internal transport	
	Other available methods - contingency	
Most likely workforce for evacuation		

Response checklist

Who takes charge?

- DIVS or designated Overhead manages the overall scene and evacuation process.
- Medical personnel and emergency responders manage patients and conduct rescues.
- OPS and IC make command decisions so the emergency can be given full attention and management. They continue to manage ongoing incident operations.

Response sequence:

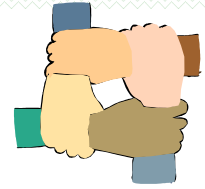
- First, secure the scene and protect responders and patients from further injury.
- Clear the Command channel for "Emergency Traffic only" if this is a critical emergency. If not, inform Communications of non-critical-emergency status and use normal communications.
- Contact closest Medical personnel and DIVS or designated Overhead for response.
- Notify Communications to initiate Accident Action Plan response.

Information for Communications: (See Medical Incident Report, page 108, IRPG)

- Type and extent of injuries?
- Airway or breathing problems? Serious bleeding?
- Is an EMT present or needed? Are Paramedics (Advanced Life Support) needed?
- Specific location of patients (Lat/Long, access route, DP#, helicopter Landing Zone)?
- What type of transport is needed? Helicopter medevac, hoist, ambulance or ground transport?
- Name of contact person in charge of the scene.
- Do not use names of patients at any time.
- **Medical Emergency Responders confer with Medical Unit Leader and DIVS or designated Overhead to determine if this is a critical emergency and what type of transport is needed.**



Human Resource Message

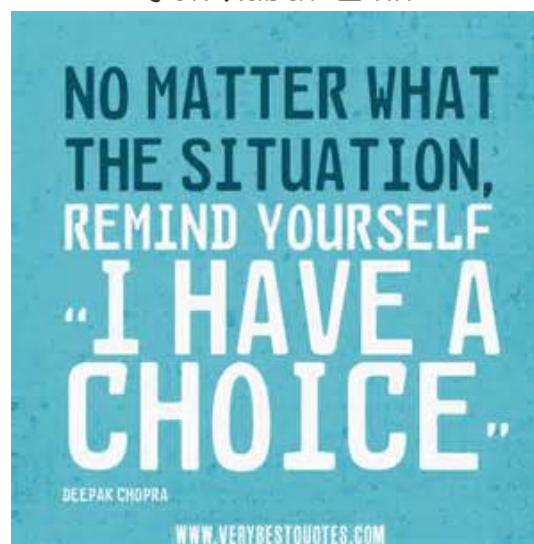


Situational Awareness

Situational awareness is a very important skillset! It is also an invaluable tool to enforce and provide to your team. It promotes safety as well as leadership and teamwork. As we move the ICP, set up other work locations and comply with unprecedented mitigations due to COVID-19, it is more important to be aware of your physical and mental health and awareness. Working together, watching out for each other, continuing to make sure we come home healthy and together is the common goal. Thank you for an amazing work ethic and for adding value to the mission!

"Paying attention and awareness are universal capacities of human beings."

Jon Kabat-Zinn



REMOTE CHECK-IN

1. Scan the QR code on front of IAP to access the fillable check-in form. If you are unable to scan the code, please call Status/Check-in at **858-204-7419** for assistance.
2. Email qualification cards, manifests, contract, AD paperwork to:
2020.castle.finance@firenet.gov

Are You a TRAINEE?

1. Scan these codes to access the fillable *trainee* information forms. Send photo of qualification cards and task book cover to: **heather.e.grove@usda.gov**



Registration



Check-out



Exit Interview

2. Call Incident Training Specialist 530-394-8076 with questions from 0600 – 2100 daily.

DEMOBILIZATION IS NOW REMOTE!!

Demobilization Steps:

1. ALL accountable property checked-out from the incident must be returned (i.e. communications, supply). Items may be returned at ICP.
2. Submit all finance documentation (time must be projected for travel home).
 - a. Only 1 representative per resource should go to Finance at ICP.
 - b. Abide by scheduled DMOB time or call Finance for an unscheduled DMOB.
 - c. Government agency resources that would like to close out their time 100% remotely should call **949-591-4123** when they are close to their DMOB date and make necessary arrangements to complete the process.
3. Scan the QR code on the front of the IAP to complete the DMOB process and start your travel home. If you are unable to scan the code to complete travel information, please call Demobilization Unit Leader at **951-235-1568** for assistance.

FINANCE MESSAGE

OPTIONS FOR SUBMITTING TIME:

1. Fillable PDF CTR/Shift Ticket: The QR code to the fillable form is below. If you do not have QR capabilities, Finance can e-mail you the forms directly.



2. Hard Copy CTR/Shift Ticket: Fill out a hard copy CTR, snap a picture and email/text the photo to Finance. If you send in a picture, please make sure it is legible and includes the supervisor's signature at the bottom!

3. OR you may turn in your actual hard copy as usual at Whitsett Spike Camp.

- Please try to submit time at least every other day.
- H-Pay justifications are still required on your CTRs – “H = Hazard Pay” is not sufficient.

2020.castle.finance@firenet.gov

Agency Overhead/Crews/Engines: 949-591-4123

Contractors/Equipment: 949-591-4131

Comp/Claims: 949-330-9973

TIP:

*****In order to use fillable pdf forms, you must have some version of Adobe Acrobat downloaded on your device. If you have any issues opening the documents call Finance for assistance. *****

This page intentionally left blank



09/06/2020

TENTATIVE RELEASE

CASTLE US-CA-SQF-002541

EQUIPMENT

E-198 0700 (ENG6) ENGINE - T6 - FLAME CHASER

OVERHEAD

O-276 0600 (REAF) KNAPP, TRACY SAMANTHA

O-166 0715 (HMGB) WHITE, NICHOLAS J

O-40 0730 (READ) HASTY, JAYMEE

O-20.58 1200 (FBAN) BLAKE, LAUREN A

Resource Message

Brief History of Jordan Hot Springs

The history of Jordan Hot Springs began long before its modern name. Findings indicate the Native Americans used this area for summer encampments for hundreds of years before John Jordan's Native Americans led him to this spot in the summer of 1861. In the summer of 1861, John Jordan blazed a trail from Visalia to Olancho. He had Native Americans on his work crew and in many places followed their trails. In the fall of 1861, John Jordan formed a corporation and petitioned the Tulare County Board of Supervisors for a franchise to build a toll trail from Visalia to the Owens Valley. The charter was granted 1862, with the provision that the trail be widened into a much needed wagon road. On May 22, 1862, John Jordan drowned while trying to cross the Kern River on a raft. In 1864 a toll road was completed over the Greenhorns and Walker Pass, thereby ending the pressure to turn the Jordan Trail into a wagon road.

In the late 1800s, packing and hiking in the Sierra Nevada became increasingly popular. The Jordan Trail was used by foot and horse traffic. It is said that at this time, there were 25 or 30 tents set up at Jordan Hot Springs on any summer day. We now think of the wilderness as being a place with few people and a lot of empty space, but in the 1900s, there was much activity in the Sierra Nevada. There were miners traveling through, sheepmen and cattlemen bringing stock up to the high country for the summer and vacationers from both the San Joaquin and the Owens Valleys using the area.

In 1978 Congress signed the Wilderness Act that created the Golden Trout Wilderness. In 1992, Jordan Hot Springs was declared an Historical Landmark and the remaining structures and artifacts are protected. Read the full 2 page history at https://goldentroutwilderness.files.wordpress.com/2011/11/jordan_h-s.pdf

Things to Remember While On the Incident

Reporting of Cultural Sites

- Do not use the radio. Looters listen to our frequencies and will note where you find things.
- Grab a GPS point, bump it up the chain of command or directly inform a READ.

Food on the Line Attract Wildlife Over Time.

- Keep food off the line as much as possible. It lures in wildlife, especially on indirect and contingency lines. Food associate's wildlife to humans and can cause future issues (i.e. bears looking for food in camps).

Sensitive Areas

- READs will be flagging sensitive areas during the incident.
- By default, please avoid going into these areas.
- The two flagging colors used are a strip of blue and a strip of red.
- For more information, please consult with a READ.

Keep Up the Good Work!

Continue to do good work for cultural and natural resources by doing the following:

- Picking up trash/micro-trash.
- Removing unused flagging.
- Sharing information and working alongside READs.
- When moving on to a new area, leaving the old area better than you found it.

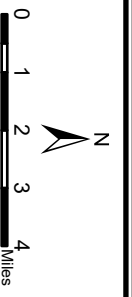


Northern Rockies Team 1

SQF COMPLEX

PHONE LIST

POSITION	NAME	MOBILE PHONE
SAFETY		
Safety Officer 1	Vicker Jr, Gerald W	443-614-4358
PUBLIC INFORMATION		
Public Information Officer 1	Smith, Jeannette M	406-544-7892
LIAISON		
Liaison Officer	Taylor, Robert L	406-554-4679
OPERATIONS		
Operations Section Chief 1	Olson, Brent H	406-249-4994
Line Ops	Schrenk, Scott	406-250-0354
Air Ops	Morton, Dennis	406-660-2318
PLANNING		
Planning Section Chief	Jermyn, Robin	406-360-5936
Planning Section Chief (t)	Carlin, Rob	406-249-1989
Deputy Planning Chief	Gump, Robert	850-688-7623
Status Check In	Heinsch, Faith Ann	858-204-7419
DEMOB	Murphy, Tanya	951-235-1568
Sequoia NF READ	Courter, Josh	559-920-7023
Inyo NF READ	Barnett, Adam	760-920-8104
LOGISTICS		
Logistics Section Chief 1	Showers, Charles	406-531-3691
Ordering Manager	Lind, Rita	406-291-3012
Supply Unit Leader	King, Josh	406-855-0984
Communications Unit Leader	Sene, Dustin	406-581-9816
COVID-19 Medical	Gaul, Roylene	406-381-6888
FINANCE		
Finance Section Chief 1	Schrenk, Amy	406-830-5214
For COMP/CLAIMS		949-330-9973
For Contractors		949-591-4131
For OH/Crews/Engines		949-591-4123

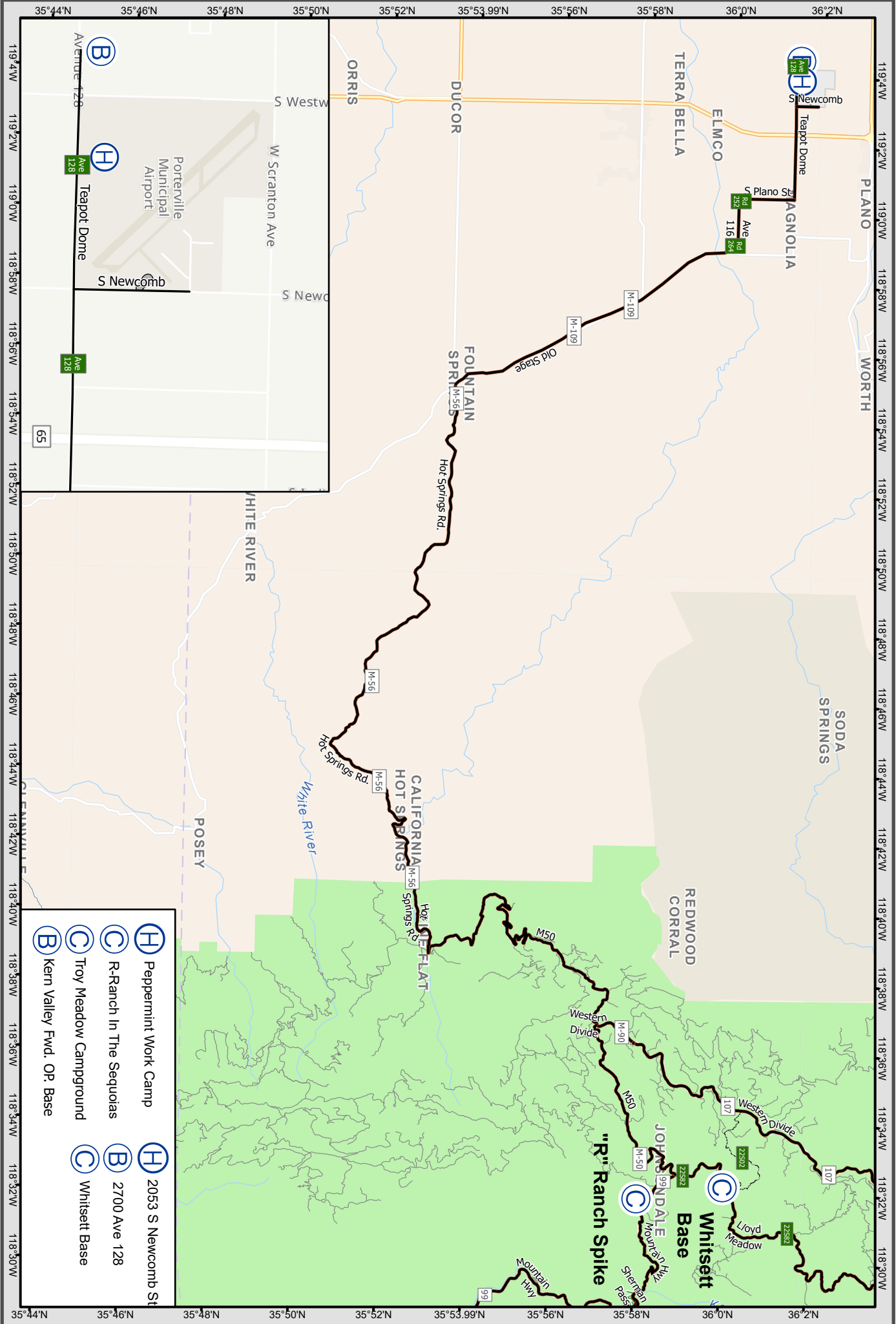


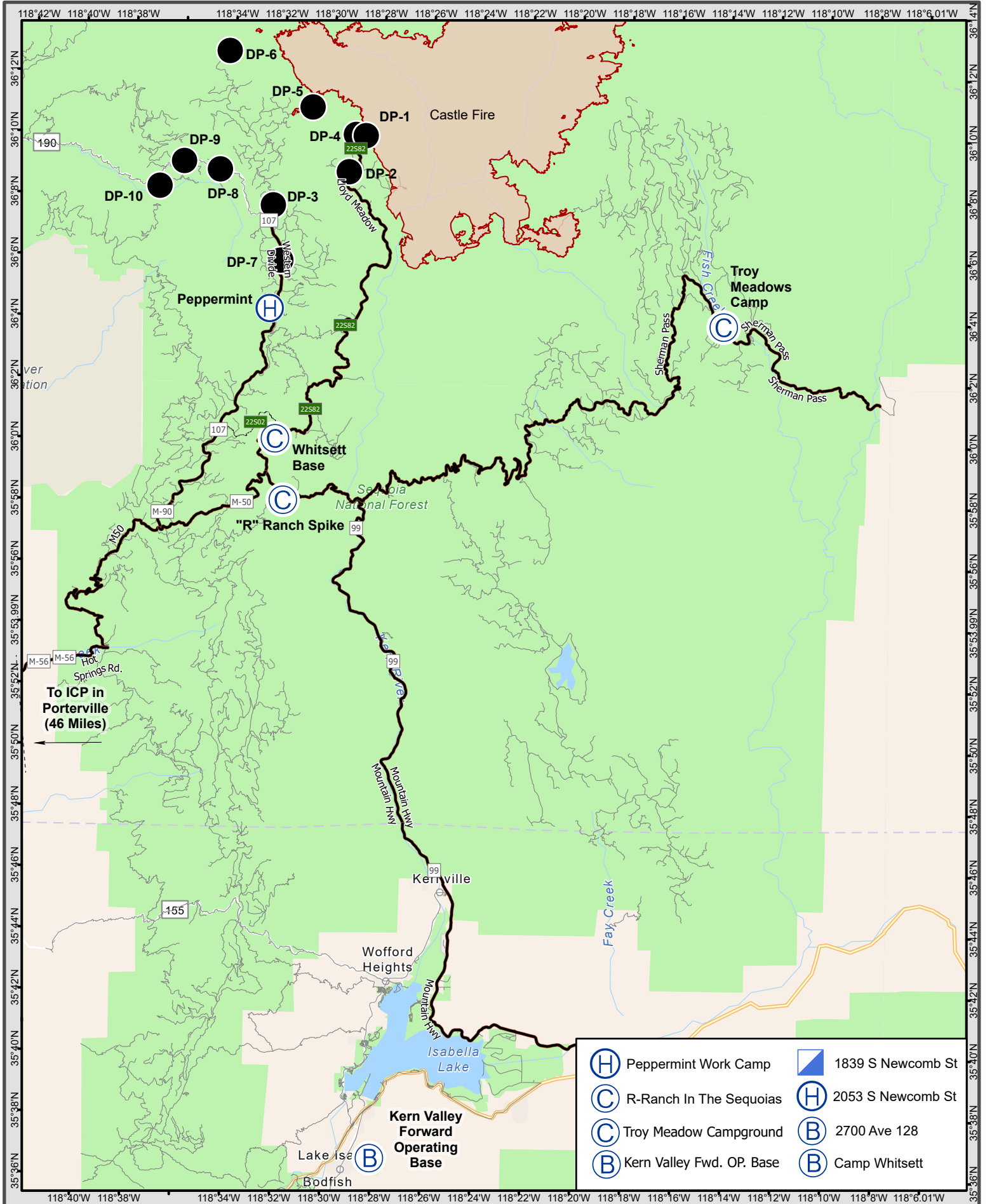
West Transportation Map

SQF Complex

CA-SQF-002622

Helibase
 Incident Base





TRANSPORTATION SQF Complex Sept 6, 2020

East Transportation Map
SQF Complex
 CA-SQF-002622





TRANSPORTATION SQF Complex
 Sept 6, 2020

0 1 2 4 Miles

MEDICAL PLAN (ICS 206 WF)

Controlled Unclassified Information//Basic

Medical Incident Report

FOR A NON-EMERGENCY INCIDENT, WORK THROUGH CHAIN OF COMMAND TO REPORT AND TRANSPORT INJURED PERSONNEL AS NECESSARY.

FOR A MEDICAL EMERGENCY: IDENTIFY ON SCENE INCIDENT COMMANDER BY NAME AND POSITION AND ANNOUNCE "MEDICAL EMERGENCY" TO INITIATE RESPONSE FROM IMT COMMUNICATIONS/DISPATCH.

Use the following items to communicate situation to communications/dispatch.

1. CONTACT COMMUNICATIONS / DISPATCH (Verify correct frequency prior to starting report)

Ex: "Communications, Div. Alpha. Stand-by for Emergency Traffic."

2. INCIDENT STATUS: Provide incident summary (including number of patients) and command structure.

Ex: "Communications, I have a Red priority patient, unconscious, struck by a falling tree. Requesting air ambulance to Forest Road 1 at (Lat./Long.) This will be the Trout Meadow Medical, IC is TFLD Jones. EMT Smith is providing medical care."

Severity of Emergency / Transport Priority	<input type="checkbox"/> RED / PRIORITY 1 Life or limb threatening injury or illness. Evacuation need is IMMEDIATE <i>Ex: Unconscious, difficulty breathing, bleeding severely, 2° – 3° burns more than 4 palm sizes, heat stroke, disoriented.</i> <input type="checkbox"/> YELLOW / PRIORITY 2 Serious Injury or illness. Evacuation may be DELAYED if necessary. <i>Ex: Significant trauma, unable to walk, 2° – 3° burns not more than 1-3 palm sizes.</i> <input type="checkbox"/> GREEN / PRIORITY 3 Minor Injury or illness. Non-Emergency transport <i>Ex: Sprains, strains, minor heat-related illness.</i>
Nature of Injury or Illness & Mechanism of Injury	Brief Summary of Injury or Illness <i>(Ex: Unconscious, Struck by Falling Tree)</i>
Transport Request	Air Ambulance / Short Haul/Hoist Ground Ambulance / Other
Patient Location	Descriptive Location & Lat. / Long. <i>(WGS84)</i>
Incident Name	Geographic Name + "Medical" <i>(Ex: Trout Meadow Medical)</i>
On-Scene Incident Commander	Name of on-scene IC of Incident within an Incident <i>(Ex: TFLD Jones)</i>
Patient Care	Name of Care Provider <i>(Ex: EMT Smith)</i>

3. INITIAL PATIENT ASSESSMENT: Complete this section for each patient as applicable (start with the most severe patient)

Patient Assessment: See IRPG PAGE 106

Treatment:

4. TRANSPORT PLAN:

Evacuation Location (if different): *(Descriptive Location (drop point, intersection, etc.) or Lat. / Long.)* Patient's ETA to Evacuation Location:

Helispot / Extraction Site Size and Hazards:

5. ADDITIONAL RESOURCES / EQUIPMENT NEEDS:

Example: Paramedic/EMT, Crews, Immobilization Devices, AED, Oxygen, Trauma Bag, IV/Fluid(s), Splints, Rope rescue, Wheeled litter, HAZMAT, Extrication

6. COMMUNICATIONS: Identify State Air/Ground EMS Frequencies and Hospital Contacts as applicable

Function	Channel Name/Number	Receive (RX)	Tone/NAC *	Transmit (TX)	Tone/NAC *
COMMAND					
AIR-TO-GRND					
TACTICAL					

7. CONTINGENCY: Considerations: If primary options fail, what actions can be implemented in conjunction with primary evacuation method? Be thinking ahead.

8. ADDITIONAL INFORMATION: Updates/Changes, etc.

REMEMBER: Confirm ETA's of resources ordered. Act according to your level of training. Be Alert. Keep Calm. Think Clearly. Act Decisively.

