



INCIDENT ACTION PLAN

SQF COMPLEX

CA-SQF-002622

P5NG2P (0513)

OPERATIONAL PERIOD

Thursday September 3, 2020

0600 to 2100



Scan for:

IAP's

Maps

Check In

DMOB

Finance

INCIDENT OBJECTIVES	1. Incident Name SQF COMPLEX	2. Date Prepared 9/2/2020	3. Time Prepared 1800
4. Operational Period			
Thursday, September 3, 2020 DAY SHIFT			
5. General Control Objectives for the Incident			
<ul style="list-style-type: none"> • Provide for firefighter and public safety as the highest priority through sound risk management and life first principles. • Limit growth of the Castle Fire by establishing a holding line that is safe for firefighters and offers high probability of success in achieving the following control objectives: Keep the fire north of Durr Wood Camp, south of Sequoia Kings Canyon Wilderness Boundary, east of Highway 190 to Summit Trail, and west of Toowa Range to King Fisher Ridge to 22S05 Road. • Monitor the spread/growth of the Shotgun Fire using air operation assets and determine future needs and suppression actions. • Protect and minimize impacts to identified values at risk including the communities of Ponderosa, Camp Nelson, Pyles Boys Camp, Freeman Giant Sequoia Grove, Osa and Beck Meadows, trailheads and facilities. • Minimize adverse effects from suppression actions on riparian areas, wetlands, Little Kern Golden Trout, Mountain Yellow Legged Frog, and Sierra Nevada Bighorn Sheep habitats. • Minimize impacts to Wilderness areas: Use minimum impact suppression tactics (MIST) by utilizing trails, streams, ridges and natural barriers when possible for control lines. • Minimize, to the extent feasible, smoke exposure to firefighters, communities, and other affected areas to reduce susceptibility to the consequences from COVID-19 exposure. 			
6. Management Objectives			
<ul style="list-style-type: none"> • Implement suppression actions that have a high potential for success, carefully weighing risk exposure to firefighters. • Provide for the safety of firefighters, aviation and public through clear communication. Ensure an understanding of strategies and tactics, including a clearly defined and obtainable end state, in order to facilitate sound risk mitigation decision making. • Natural and Cultural Resource Values at Risk: Weigh potential suppression actions in consideration of wilderness archaeological and cultural resources, waterways and riparian areas and wildlife resources, to minimize fire effects and undesirable suppression related effects to these values. • Maintain and strengthen relationships with partner agencies, stakeholders, cooperators, community leaders, and local agencies utilizing most effective platforms available. • Implement social distancing and adhere to the “module of one” concept to reduce physical exposure and transmission of COVID-19, to provide for the health and safety of all incident personnel. • Effectively manage cost of the incident by planning strategies and tactics toward a high probability of success in meeting incident objectives. • Provide accurate and timely information to agencies, stakeholders, backcountry users, and the public. • Coordinate with the Sequoia NF Duty Officer on support to any new initial attack. 			
7. Commander's Intent			
<ul style="list-style-type: none"> • Safety: Address fire fighter, public, and aviation safety through hazard/exposure mitigation. • Communication: We will keep the Agency Administrators informed of significant accomplishments and issues. • Risk Management: We will use a robust risk assessment process to mitigate unnecessary risk to fire fighters and update and/or revise decisions as necessary. • Human Resources: We will ensure that all incident personnel be treated with dignity and respect. We have a zero tolerance for harassment, alcohol, or illegal drug use. • Operations: We will make informed tactical decisions engaging the fire in the right locations with the appropriate resources. • Public Information: We will provide timely and accurate information through the press, meetings, trap lines, briefings, and social media. • Stakeholders: We will coordinate with the delegating agencies to identify key partners and keep them effectively informed of progress and to use their local knowledge. • Finance: We will establish and monitor cost effective methods for accomplishing incident objectives. 			
8. ATTACHMENTS (X IF ATTACHED)			
<input checked="" type="checkbox"/> Organization List - ICS 203	<input checked="" type="checkbox"/> Medical Plan - ICS 206	<input type="checkbox"/> _____	
<input checked="" type="checkbox"/> Division Assignment Lists - ICS 204	<input checked="" type="checkbox"/> Unit Log 214	<input type="checkbox"/> _____	
	<input checked="" type="checkbox"/> WF206 9 Line	<input type="checkbox"/> _____	
9. Prepared By (Planning Section Chief)		10. Approved By (Incident Commander)	
Rob Carlin PSC1 (t) ICS 202		Michael Goicoechea IC	

Safety Message

Managing Change

Change occurs at every moment of every day. Transitions between work shifts, personnel, line assignments, fuels, weather, topography, and other variables are prime opportunities for accidents to occur. Recognizing change and managing it appropriately is every fire fighters responsibility.

Three Techniques for Managing Change:

- **Anticipate** - Look for it. Maintain your situational awareness throughout your shift and anticipate change at all times.
- **Ask Questions** - Understand it. Get more information and ask questions. Remember to include all personnel, including subordinates, when information gathering.
- **Take Action** - Address it. Take the time to mitigate all hazards and make them known. Stay flexible to adjust your tactics as necessary.

Communication is the best tool to begin understanding and addressing change appropriately. Include all personnel and means necessary to fully identify and communicate change.

Change is Here – Be Mindful and Act Appropriately



FIRE WEATHER FORECAST



FORECAST NO: 10
PREDICTION FOR: Sep 3rd – Sep 4th 0600

INCIDENT NAME: SQF Complex
UNIT: CA-SQF
SIGNED: *Andrew Gorelow*

TIME AND DATE

FORECAST ISSUED: Wed, Sep 2 @ 2000 hours **Incident Meteorologist –** Andrew Gorelow

WEATHER DISCUSSION: High pressure building into the region will lead to hot and dry conditions into the weekend. This will lead to a diurnal pattern of nighttime drainage winds and late morning through afternoon upslope/upvalley winds. Inversions lifting by 1100. North to northeast drainage winds before 1000 with speeds 2 to 5 mph will become southeast to south and increase to around 4 to 9 gusts to 20 mph. After 1500, look for winds to shift to the southwest to west with speeds 4 to 9 mph gusts to 20 mph. Winds will continue to be heavily impacted by local terrain. Temperatures will be in the 80s to upper 90s. Poor overnight RH recoveries.

SKY/WEATHER TODAY (THURSDAY): Hot and dry. Valley inversions lifting by 1100. Morning downslope/downvalley winds will turn southeast to south after 1000 with speeds 4 to 9 mph with occasional gusts to 20 mph. A southwest to west wind push is expected in the afternoon after 1500 with winds 4 to 9 gusts to 20 mph. However, winds will be heavily affected by the local terrain.

MAX TEMPERATURES / MIN RELATIVE HUMIDITY:

5000 FT: 92 to 97 degrees (Up 1-2 Degrees) / 9 to 14% (Down 1-3%)
7000 FT: 82 to 88 degrees (Up 1-2 Degrees) / 12 to 17% (Little Change)

EYE LEVEL WINDS:

Slope/Valley: North to northeast drainage winds up to 4 mph through 1000. Inversions lifting by 1100. Winds will gradually shift to the southeast to south after 1000 with speeds 4 to 9 mph gusting to 20 mph. Winds shifting to the west with gusts up to 20 mph after 1500. Winds will continue to be heavily impacted by local terrain.

Ridges: Southwest 4 to 7 mph occasional gusts to 12 mph in the afternoon.

MIXING HEIGHT...10,500 FT AGL **VENTILATION...**Good.

TRANSPORT WIND...Northeast around 5 mph in the morning, shifting to the east in the afternoon 5 to 10 mph.

CWR (0.10")...0% **LAL...**1 **HAINES...**4 (1-Stability/3-Dryness)

SKY/WEATHER TONIGHT (THURSDAY NIGHT): Smoky. Inversions developing by 2200. Winds becoming drainage 3 to 5 mph after 2000 but could remain squirrely near the confluence of the Little Kern/Kern Rivers. Overnight RH recoveries will remain poor.

MIN TEMPERATURES / MAX RELATIVE HUMIDITY

5000 FT: 55 to 60 degrees (Little Change) / 20 to 25% (Down 2-3%)
7000 FT: 60 to 65 degrees (Little Change) / 23 to 28% (Down 1-3%)

EYE LEVEL WINDS:

Slope/Valley: Northwest to north drainage winds 2 to 5 mph.

Ridges: Northwest 1 to 3 mph.

CWR (0.10")...0% **LAL...**1 **HAINES...**4

FRIDAY: Morning smoke then becoming sunny in the afternoon. Slight increase in temperatures and decrease in RH. Little change in wind patterns.

Max Temps: 80 to 96. **Min RH:** 8 to 15%. **Winds:** Morning drainage winds becoming generally southeast to south 4-7 mph with gusts to 20 mph. Becoming southwest to west with gusts to 20 mph after 1500.

LAL: 1 **CWR (0.10"):** 0% **MIXING HEIGHT:** 10,000 FT AGL **HAINES:** 4 (1-Stability/3-Dryness)

OUTLOOK for SATURDAY and SUNDAY:

Weather: Hot and dry. Terrain influenced winds each day. A few clouds developing on the higher peaks.

High Temp: 83-97 **Min RH:** 8-18% **CWR:** 0% **LAL:** 1 **Wind:** Southwest to west 5 to 15 mph in the afternoon.

FIRE BEHAVIOR FORECAST

FORECAST NUMBER: 13	TYPE OF FIRE: Wildland
FIRE NAME: SQF Complex	OPERATIONAL PERIOD: Sept. 3, Day/Night 24 Hr
DATE ISSUED: September 2, 2020	TIME ISSUED: 1800
UNIT: CA-Sequoia National Forest	SIGNED: /s/ David Greathouse FBAN/ Lauren Blake FBAN(t)

WEATHER SUMMARY
Hot and dry. Poor overnight RH recoveries. Haines of 4
(See Fire Weather for details.)

FIRE BEHAVIOR

GENERAL

Fuels- Fuels involved in the Castle Fire are primarily Fire Behavior Fuel Models (FBFM) timber litter and understory (TU5) in areas without recent fire history, and a mix of grass (GR2) and brush (GS2) in burn scars less than 20 years old. The Shotgun Fire is higher elevation and does not have recent fire history in its current footprint and is more represented by a grass shrub (GS2) moderate timber litter (TL6).

Topography- Topography in the fire area is dominated by the Kern River. This river drainage runs north/south and is steep and narrow, roughly bisecting the fire area down the middle. Terrain has played a central role in fire spread, taking the predominantly SW flow and directing it in every way imaginable across the fire area.

Parameters for Behave Run: 1hr:4, 10hr:5, 100hr:7 Temp: 85 Slope avg: 30%

	Max Rate of Spread	Max Flame Lengths	Spotting Distances	POI
GR2	100-120 ch/hr.	6-10'	½ mi	80%
GS2	70-80 ch/hr.	6-10'	½ mi	80%
TU5	22-28 ch/hr.	10-13'	½ mi	100%
TL6	12-18 ch/hr.	3-6'	¼ mi	80%

SPECIFIC

Branch I

Div. A/B- If burning operations occur in the Burnt Meadows down to the dozer line, afternoon winds after they shift to a west wind will present the most favorable conditions.

Div. C/G- Minimal growth in the Lion Fire area in Div. C and in Div. G fire will work its way north up Leggett and Grasshopper Creek.

Div. Y/Z- Periods of morning terrain influenced SE flow offer opportunities for slope/wind/aspect aligned runs towards values at risk west of the fire. As west wind follows terrain in the afternoon, possible W/NW winds may present on the fireline.

Branch V

Div. I/L/N/U- Fire continues to move to the NE towards Kern Peak and Overlook Peak thru Chinquapin Basin. West/Southwest winds will continue push fire into Soda Flat as spotting is likely along with progression toward Osa Meadow, and Lion Meadows.

Div. X- Fire will push through brush patches and roll out with steep terrain. Fire behavior in the Schaeffer fire scar will be light to moderate as it finds brush/grass patches and terrain but should provide opportunities to go direct.

Shotgun Fire The fire slowly continues to progress to the drainages and find available fuel. If the fire finds its way across the creek bottom, expect a slope reversal and short terrain/ wind aligned runs.

AIR OPERATIONS

Smoke should lift between 1200-1300 to support air missions.

SAFETY

Stay alert, don't get complacent! Small changes in fuel and weather conditions can equal big changes in fire behavior.

DIVISION ASSIGNMENT LIST		Branch	Division/Group
Incident Name		I	ALPHA / BRAVO
SQF Complex		Operational Period	
		Date: 9/3/2020	Time: 0600-2100
Operations Personnel			
Operations Chief	Brent Olson, Scott Schrenk Andy James, Shawn Borgen (t)	Branch Director	Justin Kaber
Safety Officer	Gerald Vickers, Dan Cassidy	Division/Group Supervisor	Kate Airhart 406-360-0506

Resources Assigned This Period

Strike Team/Task Force/ Resource Designator	Req#	Last Shift	Leader	# Persons	Drop Off Point /Time	Pick Up Point / Time
HC1 Fulton	C-67	9/15	John Acosta	20	Whitsett Base 0600	Whitsett Base 2100
WFM Sequoia	O-266	9/12	Aaron Woodyard	8	Whitsett Base 0600	Whitsett Base 2100
HC2 Scorpions – 3	C-13	9/8	Dileep Bobba	22	Whitsett Base 0600	Whitsett Base 2100
TFLD	O-336	9/14	Scott Turner	1	Whitsett Base 0600	Whitsett Base 2100
TFLD	O-259	9/12	Issac Solomon	1	Whitsett Base 0600	Whitsett Base 2100
HEQB	O-415	9/14	Joshua Perkins	1	Whitsett Base 0600	Whitsett Base 2100
ENG6 High Desert	E-137	9/12	Thomas Hanks	3	Whitsett Base 0600	Whitsett Base 2100
ENG6 Red Dog	E-167	9/12	Tim England	2	Whitsett Base 0600	Whitsett Base 2100
WT2 CNF WT222	E-145	9/12	Andrew Peterson	2	Whitsett Base 0600	Whitsett Base 2100
WT2 K&B	E-48	9/7	Mike Morgan	1	Whitsett Base 0600	Whitsett Base 2100
WT2 Angulo	E-89	9/11	Albert Angulo	1	Whitsett Base 0600	Whitsett Base 2100
SKG2	E-180	9/16	Justin Davis	1	Whitsett Base 0600	Whitsett Base 2100
SKG2	E-194	9/16	Bernard Saul	2	Whitsett Base 0600	Whitsett Base 2100
DOZ2 ANF 12	E-142	9/10	Doug Lander	2	Whitsett Base 0600	Whitsett Base 2100
DOZ2 Westlund	E-139	9/12	Alan Westlund	2	Whitsett Base 0600	Whitsett Base 2100
DOZ2 Krisher	E-140	9 /11	David Krisher	2	Whitsett Base 0600	Whitsett Base 2100
EXC2 Sandborg	E-179	9 /13	Chuck Sandborg	2	Whitsett Base 0600	Whitsett Base 2100
EXC2 Denis Equip	E-188	9/15	Anthony Pezzi	2	Whitsett Base 0600	Whitsett Base 2100
GRD2 Kirklang	E-97	9/ 9	Todd Adams	2	Whitsett Base 0600	Whitsett Base 2100
CHIPPER	E-192			2	Whitsett Base 0600	Whitsett Base 2100
FALM Tree Guys	O-178	9/9	Chase Bishop	2	Whitsett Base 0600	Whitsett Base 2100
Inyo Pack String	O-142	9/7	Lee Roesser	3	Whitsett Base 0600	Whitsett Base 2100
SOFR	O-171	9/9	Eric Klemowicz	1	Whitsett Base 0600	Whitsett Base 2100
SOFR	O-183	9/11	Joseph Fowler	1	Whitsett Base 0600	Whitsett Base 2100
FEMP	O-189	9/5	Shane Daunis	1	Whitsett Base 0600	Whitsett Base 2100
FEMT	O-210	9/5	Kyle Busby	1	Whitsett Base 0600	Whitsett Base 2100
REAF	O-50	9/6	Ernest Wingate	1	Whitsett Base 0600	Whitsett Base 2100
READ	O-277	9/11	Scott Dailey	1	Whitsett Base 0600	Whitsett Base 2100

Work Assignments

Task: Construct dozer and hand line between 31E14 trail and Jerky Meadow. Construct line from Jerky Meadow to Div A / Z break.

Purpose: Keep the fire spread east of Lloyd Meadow Road, north of Ponderosa and Mountain Home community.

End State: Limit fire spread into additional values at risk to protect communities and infrastructure.

Special Instructions

- Personnel to notify DIVS of potentially sensitive cultural materials.
- Castle Ambulance 1 staged at Whitsett Base Camp. Castle Ambulance 2 stage at R Ranch Spike. Castle REMS available to all DIVS.

Division/Group Communication Summary

Function	Channel	Frequency RX	Frequency TX	TONE RX	TONE TX	Function	Channel	Frequency RX	Frequency TX
Command	1	170.0000	166.6750	151.4	151.4	A/G Pri	13	172.3500	172.3500
Tactical	5	168.0500	168.0500	151.4	151.4	A/G Sec			
Prepared by	Approved By		Date		Time				
Anya Moline – RESL	Robin Jermyn - PSC		9/2/2020		1800				

DIVISION ASSIGNMENT LIST				Branch		Division/Group				
Incident Name				I		YANKEE / ZULU page 1 of 2				
SQF Complex				Operational Period						
				Date: 9/3/2020			Time: 0600-2100			
Operations Personnel										
Operations Chief		Brent Olson, Scott Schrenk, Andy James			Branch Director			Justin Kaber		
Safety Officer		Gerald Vickers, Dan Cassidy			Division/Group Supervisor			Rocky Wagoner 406-531-9809		
Resources Assigned This Period										
Strike Team/Task Force/ Resource Designator		Req#	Last Shift	Leader		# Persons	Drop Off Point /Time		Pick Up Point / Time	
HC1 Dalton		C-53	9/11	Scott Gorman		19	Whitsett Base 0600		Whitsett Base 2100	
HC1 Vista Grande		C-54	9/12	Jess Estrada		19	Whitsett Base 0600		Whitsett Base 2100	
HC2IA Black Eagles - 2		C-2	9/3	Gustavo Santoyo		22	Whitsett Base 0600		Whitsett Base 2100	
HC2IA Black Eagles - 5		C-3	9/4	Reyes Bedolla		21	Whitsett Base 0600		Whitsett Base 2100	
HC2 Cobras – 6		C-6	9/3	Walter Medim		20	Whitsett Base 0600		Whitsett Base 2100	
WFM Horseshoe		O-1	9/3	Candice Kutrosky		13	Whitsett Base 0600		Whitsett Base 2100	
WFM Groveland		O-186	9/9	Timothy Markin		8	Whitsett Base 0600		Whitsett Base 2100	
ENG3 STF-314		E-60	9/8	Ron Plummer		5	Whitsett Base 0600		Whitsett Base 2100	
ENG3 A1Fire E13		E-79	9/11	Wyatt Lawrence		3	Whitsett Base 0600		Whitsett Base 2100	
ENG4 Troy		E-134	9/12	Dan Hokanson		3	Whitsett Base 0600		Whitsett Base 2100	
ENG6 Flame Chaser		E-133	9/15	Duane Many Hides		3	Whitsett Base 0600		Whitsett Base 2100	
ENG6 Utah Fire Co.		E-168	9/12	Anthony Olveda		3	Whitsett Base 0600		Whitsett Base 2100	
ENG6 R-Construction		E-166	9/12	Richard Deroche		3	Whitsett Base 0600		Whitsett Base 2100	
ENG6 Buffalo		E-132	9/13	Gregg Webster		3	Whitsett Base 0600		Whitsett Base 2100	
WT2 SQF WT2		E-114	9/9	Jaime Ayaly		2	Whitsett Base 0600		Whitsett Base 2100	
WT2 BDF WT212		E-143	9/13	Christopher Sequra		2	Whitsett Base 0600		Whitsett Base 2100	
WT2 Dust Busters		E-49	9/11	Nathan Stutz		2	Whitsett Base 0600		Whitsett Base 2100	
WT2 Central 25		E-146	9/13	Jeff Nevins		2	Whitsett Base 0600		Whitsett Base 2100	
WT2 49ERS		E-50	9/11	Steve Smith		1	Whitsett Base 0600		Whitsett Base 2100	
WT2 Valley Farms		E-88	9/8	Jeff Bates		1	Whitsett Base 0600		Whitsett Base 2100	
DOZ2 Shannon Bros. 44		E-44	9/7	Bill Shannon		1	Whitsett Base 0600		Whitsett Base 2100	
DOZ2 Shannon Bros. 45		E-45	9/7	John Shannon		1	Whitsett Base 0600		Whitsett Base 2100	
DOZ2 STF 51		E-118	9/7	Mike Nott		2	Whitsett Base 0600		Whitsett Base 2100	
DOZ Muth Equip		E-5	9/6	Danny Lewis		3	Whitsett Base 0600		Whitsett Base 2100	
DOZ2 Conner		E-83	9/8	Tim Conner		1	Whitsett Base 0600		Whitsett Base 2100	
FALM Timbersmith		O-176	9/9	Keenan Smith		2	Whitsett Base 0600		Whitsett Base 2100	
FALM Timbersmith		O-177	9/9	Ryan Deniz		2	Whitsett Base 0600		Whitsett Base 2100	
Work Assignments										
Task: Construct direct line from the Div Z / A break along the Castle Mountain ridge.										
Purpose: Protect values at risk through structure defense and line construction measures.										
End State: Limit fire spread to values at risk on the southwest corner of the fire.										
Special Instructions										
<ul style="list-style-type: none"> Personnel to notify DIVS of potentially sensitive cultural materials. Castle Ambulance 1 staged at Whitsett Base Camp. Castle Ambulance 2 stage at R Ranch Spike. Castle REMS available to all DIVS. Crews to be prepared to spike. 										
Division/Group Communication Summary										
Function	Channel	Frequency RX	Frequency TX	TONE RX	TONE TX	Function	Channel	Frequency RX	Frequency TX	
	Command	1	170.0000	166.6750	151.4		151.4	A/G Pri	13	172.3500
Tactical	9	168.2500	168.2500	151.4	151.4	A/G Sec				
Prepared by		Approved By				Date		Time		
Anya Moline – RESL		Robin Jermyn – PSC				9/2/2020		1800		

DIVISION ASSIGNMENT LIST		Branch	Division/Group
Incident Name		I	YANKEE / ZULU page 2 of 2
SQF Complex		Operational Period	
		Date: 9/3/2020	Time: 0600-2100
Operations Personnel			
Operations Chief	Brent Olson, Scott Schrenk, Andy James, Shawn Borgen (t)	Branch Director	Justin Kaber
Safety Officer	Gerald Vickers, Dan Cassidy	Division/Group Supervisor	Rocky Wagoner 406-531-9809

Resources Assigned This Period						
Strike Team/Task Force/ Resource Designator	Req#	Last Shift	Leader	# Persons	Drop Off Point /Time	Pick Up Point / Time
SOFR	O-270	9/14	Philip Bordelon	1	Whitsett Base 0600	Whitsett Base 2100
SOF2	O-218	9/3	Jeffrey Pilotto	1	Whitsett Base 0600	Whitsett Base 2100
SOFR	O-28	9/3	Michael Work	1	Whitsett Base 0600	Whitsett Base 2100
SOFR	O-234	9/12	Dwayne Johnson	1	Whitsett Base 0600	Whitsett Base 2100
EMPT	O-341	9/8	John Sitar	1	Whitsett Base 0600	Whitsett Base 2100
EMPF	O-91	9/8	Royce Copeman	1	Whitsett Base 0600	Whitsett Base 2100
EMPF	O-92	9/8	Robert Abbruzzese	1	Whitsett Base 0600	Whitsett Base 2100
EMTF	O-340	9/8	Ron Spellman	1	Whitsett Base 0600	Whitsett Base 2100
REAF	O-231	9/11	Donna Peppin	1	Whitsett Base 0600	Whitsett Base 2100
REAF	O-229	9/13	Lanny Flaherty	1	Whitsett Base 0600	Whitsett Base 2100
REAF	O-141	9/8	Marcos Rios	1	Whitsett Base 0600	Whitsett Base 2100
REAF	O-228	9/12	Michael Mcgraw	1	Whitsett Base 0600	Whitsett Base 2100
READ	O-247	9/3	Lindsey Steinwachs	1	Whitsett Base 0600	Whitsett Base 2100
READ	O-229	9/12	Lanny Flaherty	1	Whitsett Base 0600	Whitsett Base 2100
READ	O-141	9/7	Marco Rios	1	Whitsett Base 0600	Whitsett Base 2100
READ	O-276	9/4	Tracy Knapp	1	Whitsett Base 0600	Whitsett Base 2100

Work Assignments

Task: Construct line into Kern Canyon from the Div Z / Y break to the river's edge. Contain fire spread to the west. Mop up as appropriate with firefighter safety in consideration.

Purpose: Limit fire spread to the south and western fire edge.

End State: Limit fire spread in the area of Forks Of The Kern and the west side fo the river.

Special Instructions

- Personnel to notify DIVS of potentially sensitive cultural materials.
- Castle Ambulance 1 staged at Whitsett Base Camp. Castle Ambulance 2 stage at R Ranch Spike. Castle REMS available to all DIVS.

Division/Group Communication Summary

Function	Channel	Frequency RX	Frequency TX	TONE RX	TONE TX	Function	Channel	Frequen cy RX	Frequency TX
Command	1	170.0000	166.6750	151.4	151.4	A/G Pri	13	172.3500	172.3500
Tactical	8	166.7750	166.7750	151.4	151.4	A/G Sec			

Prepared by Anya Moline – RESL	Approved By Robin Jermyn – PSC	Date 9/2/2020	Time 1800
-----------------------------------	-----------------------------------	------------------	--------------

DIVISION ASSIGNMENT LIST			Branch		Division/Group				
Incident Name			V		LIMA				
SQF Complex			Operational Period						
			Date: 9/3/2020 Time: 0600-2100						
Operations Personnel									
Operations Chief	Brent Olson, Scott Schrenk, Andy James, Shawn Borgen (t)		Branch Director		Ryan Butler				
Safety Officer	Gerald Vickers, Dan Cassidy		Division/Group Supervisor		Mike King 406-370-2121				
Resources Assigned This Period									
Strike Team/Task Force/ Resource Designator	Req#	Last Shift	Leader	# Persons	Drop Off Point /Time	Pick Up Point / Time			
HC1 Golden Eagles	C-55	9/14	Robert Villegas	19	Troy Meadows 0600	Troy Meadows 2100			
HC1 Sierra	C-57	9/13	Alan Roby	21	Troy Meadows 0600	Troy Meadows 2100			
WFM Mammoth	O-49	9/6	Jeffrey Karl	10	Troy Meadows 0600	Troy Meadows 2100			
ENG3 SQF E-341	E-216	9/15		5	Troy Meadows 0600	Troy Meadows 2100			
ENG6 Flame Cahser	E-198	9/5	Edwin Hall	3	Troy Meadows 0600	Troy Meadows 2100			
ENG6 White Horse	E-199	9/15	Jason McGaughy	3	Troy Meadows 0600	Troy Meadows 2100			
ENG6 Late Summers	E-200	9/5	Josh Crollard	3	Troy Meadows 0600	Troy Meadows 2100			
ENG6 Late Summers	E-201	9/5	Brad Beck Jr.	3	Troy Meadows 0600	Troy Meadows 2100			
ENG5 Ultimate	E-202	9/4	Russell Haynes	3	Troy Meadows 0600	Troy Meadows 2100			
ENG6 Dillon Fire	E-204	9/7	Riley Leingang	3	Troy Meadows 0600	Troy Meadows 2100			
ENG6 RandR	E-205	9/7	Mike Cox	3	Troy Meadows 0600	Troy Meadows 2100			
Inyo Pack String	O-142	9/7	Lee Roesser	3	Troy Meadows 0600	Troy Meadows 2100			
EMPF	O-497	9/15	Tommy Kabanaugh	1	Troy Meadows 0600	Troy Meadows 2100			
EMPF	O-342	9/14	Yoshimi Toyota	1	Troy Meadows 0600	Troy Meadows 2100			
EMPF/MEDL			Scott Hamilton	1	Troy Meadows 0600	Troy Meadows 2100			
EMPF			Mathew Heckman	1	Troy Meadows 0600	Troy Meadows 2100			
READ	O-252	9/11	Adam Toomey	1	Troy Meadows 0600	Troy Meadows 2100			
READ	O-231	9/11	Donna Peppin	1	Troy Meadows 0600	Troy Meadows 2100			
READ	O-40	9/5	Jaymee Hasty	1	Troy Meadows 0600	Troy Meadows 2100			
READ	O-228	9/12	Michael McGraw	1	Troy Meadows 0600	Troy Meadows 2100			
Work Assignments									
Task: Scout for opportunities to construct direct and indirect line, provide point protection as needed.									
Purpose: Limit fire spread on northern and eastern edge.									
End State: Limit northern and eastern fire spread, protect infrastructure and values at risk.									
Special Instructions									
<ul style="list-style-type: none"> Personnel to notify DIVS of potentially sensitive cultural materials. Castle Ambulance 1 staged at Whitsett Base Camp. Castle Ambulance 2 stage at R Ranch Spike. Castle REMS available to all DIVS. 									
Division/Group Communication Summary									
Function	Channel	Frequency RX	Frequency TX	TONE RX	TONE TX	Function	Channel	Frequency RX	Frequency TX
Command	2	170.6875	166.5750	151.4	151.4	A/G Pri	13	172.3500	172.3500
Tactical	10	167.1125	167.1125	151.4	151.4	A/G Sec			
Prepared by Anya Moline - RESL		Approved By Robin Jermyn - PSC			Date 9/2/2020			Time 1800	

DIVISION ASSIGNMENT LIST			Branch			Division/Group				
Incident Name			V			X-RAY				
SQF Complex			Operational Period							
			Date: 9/3/2020			Time: 0600-2100				
Operations Personnel										
Operations Chief		Brent Olson, Scott Schrenk, Andy James, Shawn Borgen		Branch Director			Ryan Butler			
Safety Officer		Gerald Vickers, Dan Cassidy		Division/Group Supervisor			Styrker Clark 406-546-7405			
Resources Assigned This Period										
Strike Team/Task Force/ Resource Designator	Req#	Last Shift	Leader	# Persons	Drop Off Point /Time	Pick Up Point / Time				
HC1 Los Padres	C-56	9/13	Matt Aoki	19	Troy Meadows 0600	Troy Meadows 2100				
HC1 Bear Divide	C-66	9/13	Josh Thomas	19	Troy Meadows 0600	Troy Meadows 2100				
HC1 Crane Valley	C-73				Troy Meadows 0600	Troy Meadows 2100				
FEMP	O-92	9/7	Bryan Swenson	1	Troy Meadows 0600	Troy Meadows 2100				
FEMP	O-233	9/10	Silas Fischer	1	Troy Meadows 0600	Troy Meadows 2100				
Work Assignments										
Task: Coordinate with resources west of the Kern River to contain fire spread east of the Kern River. Utilize air operations assets to construct helispots within division to allow IHC crews to gain access to control fire spread.										
Purpose: Limit fire spread to the south and east.										
End State: Fire spread east of the Kern River contained.										
Special Instructions										
<ul style="list-style-type: none"> Personnel to notify DIVS of potentially sensitive cultural materials. Castle Ambulance 1 staged at Whitsett Base Camp. Castle Ambulance 2 stage at R Ranch Spike. Castle REMS available to all DIVS. 										
Division/Group Communication Summary										
Function	Channel	Frequency RX	Frequency TX	TONE RX	TONE TX	Function	Channel	Frequen cy RX	Frequency TX	
Command	2	170.6875	166.5750	151.4	151.4	A/G Pri	13	172.3500	172.3500	
Tactical	10	167.1125	167.1125	151.4	151.4	A/G Sec				
Prepared by Anya Moline – RESL		Approved By Robin Jermyn				Date 9/2/2020			Time 1800	

DIVISION ASSIGNMENT LIST		Branch	Division/Group
Incident Name		V	NIGHT
SQF COMPLEX		Operational Period	
		Date: 9/3/2020	Time: 1800-0900
Operations Personnel			
Operations Chief	Brent Olson, Scott Schrenk, Andy James, Shawn Borgen	Branch Director	Ryan Butler
Safety Officer	Gerald Vickers, Dan Cassidy	Division/Group Supervisor	Mike Brown

Resources Assigned This Period						
Strike Team/Task Force/ Resource Designator	Req#	Last Shift	Leader	# Persons	Drop Off Point /Time	Pick Up Point / Time
WFM Slate Mtn	O-4	9/5	Angel Reyes	10	Whitsett Base 0600	Whitsett Base 2100
ENG3 OVD E3132	E-135	9/11	Phillip Lewis	4	Whitsett Base 0600	Whitsett Base 2100
ENG3 STF E346	E-136	9/11	Michael Scheu	5	Whitsett Base 0600	Whitsett Base 2100
ENG6 Blue Sky E8	E-63	9/10	Alex Parker	3	Whitsett Base 0600	Whitsett Base 2100
ENG6 Cahoon 1	E-64	9/11	Blane Fifield	3	Whitsett Base 0600	Whitsett Base 2100
ENG6 Cahoon 2	E-65	9/11	Randy Mattson	3	Whitsett Base 0600	Whitsett Base 2100
ENG6 Solomon	E-66	9/12	William Hughes	3	Whitsett Base 0600	Whitsett Base 2100
ENG6 E696	E-72	9/9	William McDarment	3	Whitsett Base 0600	Whitsett Base 2100
ENG6 Peanut Pie E2	E-78	9/11	Wayde Visser	3	Whitsett Base 0600	Whitsett Base 2100
WT2 INF WT21	E-90	9/11	Cameron Ferrante	2	Whitsett Base 0600	Whitsett Base 2100
WT2 ANF 237	E-113	9/10	Francisco Carrillo	2	Whitsett Base 0600	Whitsett Base 2100
SOFR Tadlock	O-213	9/11	Paul Tadlock	1	Whitsett Base 0600	Whitsett Base 2100
AMBU						

Work Assignments

Task: Patrol and monitor accessible fire area, support water handling operations from prior shifts, mop-up as appropriate based on firefighter safety.

Purpose: Limit fire spread to additional values at risk.

End State: Fire Spread limited to existing fire perimeter.

Special Instructions

- Personnel to notify DIVS of potentially sensitive cultural materials.
- Castle Ambulance 1 staged at Whitsett Base Camp. Castle Ambulance 2 stage at R Ranch Spike. Castle REMS available to all DIVS.

Division/Group Communication Summary

Function Command	Channel	Frequency RX	Frequency TX	TONE RX	TONE TX	Function A/G Pri	Channel	Frequency RX	Frequency TX
Tactical	5	168.0500	168.0500	151.4	151.4	A/G Sec	13	172.3500	172.3500
Tactical									
Prepared by	Approved By		Date		Time				
Anya Moline – RESL	Robin Jermyn		9/2/2020		1800				

DIVISION ASSIGNMENT LIST			Branch			Division/Group				
Incident Name			STRUCTURE			LLOYD STRUCTURE				
SQF Complex			Operational Period							
			Date: 9/3/2020			Time: 0600-2100				
Operations Personnel										
Operations Chief		Brent Olson, Scott Schrenk, Andy James, Shawn Borgen (t)			Branch Director		Drew Daily			
Safety Officer		Gerald Vickers, Dan Cassidy			Division/Group Supervisor		Bryan Duffy			
Resources Assigned This Period										
Strike Team/Task Force/Resource Designator		Req#	Last Shift	Leader	# Persons	Drop Off Point /Time	Pick Up Point / Time			
S/T ENG3 XSB 1521C		E-110	9/4	Mike Deponce	21	Whitsett Base 0600	Whitsett Base 2100			
S/T ENG6 FTU 5184F		E-115	9/10	Jason Elizondo	11	Whitsett Base 0600	Whitsett Base 2100			
TF XTU 5183		E-31	9/5	Brian Duffy	16	Whitsett Base 0600	Whitsett Base 2100			
WT2 XTU WT25		E-116	9/9	Hank Seguin	2	Whitsett Base 0600	Whitsett Base 2100			
WT2 SNF WT23		E-114	9/13	Faustino Caballero	2	Whitsett Base 0600	Whitsett Base 2100			
Work Assignments										
Task: Provide structure defense for the Lloyd Meadows, Pyle's Camp, Peppermint Ranch Communities, T-T Ranch, Camp Whitsett and Forest Service Campgrounds.										
Purpose: Protect values at risk from spreading fire.										
End State: Values at risk and communities are able to operate in pre-fire condition.										
Special Instructions										
<ul style="list-style-type: none"> Personnel to notify DIVS of potentially sensitive cultural materials. Castle Ambulance 1 staged at Whitsett Base Camp. Castle Ambulance 2 stage at R Ranch Spike. Castle REMS available to all DIVS 										
Division/Group Communication Summary										
Function	Channel	Frequency RX	Frequency TX	TONE RX	TONE TX	Function	Channel	Frequency RX	Frequency TX	
	Command						A/G Pri			
	Command						A/G Sec			
Tactical										
Prepared by		Approved By				Date		Time		
Anya Moline – RESL		Robin Jermyn				9/2/2020		1800		

DIVISION ASSIGNMENT LIST			Branch			Division/Group			
Incident Name			STRUCTURE			PONDEROSA STRUCTURE			
SQF Complex			Operational Period						
			Date:9/3/2020			Time: 0600 to 2100			
Operations Personnel									
Operations Chief		Brent Olson, Scott Schrenk, Andy James		Branch Director			Drew Daily		
Safety Officer		Gerald Vickers / Tony Petrilli Dan Cassidy		Division/Group Supervisor			Brad Allen 09/10		
Resources Assigned This Period									
Strike Team/Task Force/ Resource Designator		Req#	Last Shift	Leader	# Persons	Drop Off Point /Time	Pick Up Point / Time		
TF XTU 5182		E-31	9/5	Brian Duffy	16	Whitsett Base 0600	Whitsett Base 2100		
Work Assignments									
Task: Implement structure defense for Ponderosa and adjoining communities.									
Purpose: Protect values at risk from spreading fire.									
End State: Value at risk and communities are able to operate in pre-fire condition									
Special Instructions									
<ul style="list-style-type: none"> Personnel to notify DIVS of potentially sensitive cultural materials. Castle Ambulance 1 staged at Whitsett Base Camp. Castle Ambulance 2 stage at R Ranch Spike. Castle REMS available to all DIVS 									
Division/Group Communication Summary									
Function	Channel	Frequency RX	Frequency TX	TONE RX	TONE TX	Function	Channel	Frequency RX	Frequency TX
	Command						A/G Pri	13	172.3500
Tactical	12	154.2875	154.2875	156.7	156.7	A/G Sec			
Tactical									
Prepared by		Approved By				Date		Time	
Anya Moline – RESL		Robin Jermyn – PSC				9/2/2020		1800	

AIR OPERATIONS SUMMARY

PREPARED BY: Daniel Sepulveda

PREPARED DATE/TIME- 9/2/20 20:00

1. INCIDENT NAME: SQF COMPLEX	2. OPERATIONAL PERIOD DATE: 9/3/2020 START TIME: 0800 END TIME: 2000 SUNRISE: 0625 SUNSET: 1921
-------------------------------	---

<p>3. REMARKS (Safety Notes, Hazards, Air Operations Special Equipment,, etc.):</p> <p>SQF COMPLEX ROTOR WATER RESTRICTION. (Dip Site Comingling Matrix)</p> <p>A TO A YES B TO B YES / A TO B B TO A NO</p> <p>HELIBASE DUST ABATEMENT WT-E-86, TYPE 2</p>	<p>4. MEDEVAC A/C:</p> <p>H-408 Hoist/ALS at Keen 24/7</p> <p>Back up H-552 at Sequoia Kings N.P</p>	<p>5. TFR: 0/100</p> <p>Altitude: 12,000__ = MSL</p> <p>36 22.00 x 118 12.30</p> <p>36 01.00 x 118 12.30</p> <p>36 01.00 x 118 35.00</p> <p>36 22.00 x 118 35.00</p> <p>(TFR VICTOR 123.725)</p>
---	--	--

6. PERSONNEL	Phone	7. FREQUENCIES	AM	FM	8. FIXED-WING	# Avail / Type/ Make-Model / FAA N# / Base(s)
AOBD: Dennis Morton	406-660-2318	AIR/AIR		165.9875	Airtankers	
ATGS: Tony Dupree		AIR/AIR Rotor	123.725		Leadplanes	
ASGS: Daniel Sepulveda	909-374-8944	A/G RTW	TAC	172.3500	Base FAX #:	
HEBM – PTV Jesse Rodriguez	909-253-4442	A/G RTW	CMD	169.1500	ATGS Aircraft	7TT Relief AA
HEBM (T)– PTV Darren Stanford	909-702-8344	CALCORD	Medivacs	156.0750	Other	
HEBM – Peppermint Matt Quezada	559-542-2301	DECK FREQ:		163.100		
ATB: Raul Contreas	559-789-0191	TOLC FREQ:	123.975			

9. HELICOPTERS (Use Additional Sheets As Necessary)

FAA N#	TY	MAKE/MODEL	BASE	AVAIL	START	REMARKS	FAA N#	TY	MAKE/MODEL	BASE	AVAIL	START	REMARKS
1CG	I	S-61	ATB	0800	0830	A-8	H-520	II	205++	ATB	0800	0830	A-79
8CH	I	Chinook 48D	ATB	0800	0830	A31	H-522	II	205++	ATB	0800	0830	A-123
9RH	I	Kmax	ATB	0800	0830	A32	H-523	II	205++	ATB	0800	0830	A-11
5BH	I	S-70	ATB	0800	0830	A-76	H-535	III	Bell 407	ATB	0800	0830	A39
5CH	I	BV 234 LT	ATB	0800	0830	A-53							

MISSION:
 RECONS AS REQUESTED
 FLY CREWS AS REQUESTED
 IDENTIFY DISP SITE AND HELISPOTS AS NEEDED

/s/ Daniel Sepulveda, ASGS

INCIDENT RADIO COMMUNICATIONS PLAN			Incident Name SQF COMPLEX - DAY			Date/Time Prepared 9/02/2020			Operational Period Date/Time 9/03/20 0600 9/03/20 1800		
Ch #	Function	Channel Name/Trunked Radio System Talkgroup	Assignment	RX Freq N or W	RX Tone/NAC	TX Freq N or W	Tx Tone/NAC	Mode A, D or M	Remarks		
1	CMD REPEATER	NIFC C4	DIV A/B/C/Y/Z	170.0000	151.4	166.6750	151.4	A	JORDON PEAK		
2	CMD REPEATER	NIFC C11	DIV L/N/U/X	170.6875	151.4	166.5750	151.4	A	SHERMAN PEAK		
3	CMD REPEATER	NIFC C31	DIV G/I/C/L	172.5500	151.4	162.1875	151.4	A	COYOTE PEAK		
4	FOREST REPEATER	SQF CH2	ALL/BACKUP	169.9000		165.7000	103.5	A	SQF FOREST RPTR DISPATCH		
5	TACTICAL CHNL	NIFC T1	DIV A/N/NIGHT	168.0500	151.4	168.0500	151.4	A	SQF TACTICAL		
6	TACTICAL CHNL	NIFC T3	DIV B/U	168.6000	151.4	168.6000	151.4	A	SQF TACTICAL		
7	TACTICAL CHNL	NIFC T5	DIV X/C	166.7250	151.4	166.7250	151.4	A	SQF TACTICAL		
8	TACTICAL CHNL	NIFC T6	DIV Y/I	166.7750	151.4	166.7750	151.4	A	SQF TACTICAL		
9	TACTICAL CHNL	NIFC T7	DIV Z/L/G	168.2500	151.4	168.2500	151.4	A	SQF TACTICAL		
10	TACTICAL CHNL	R5 T5	UNASSIGNED	167.1125	151.4	167.1125	151.4	A	SQF TACTICAL		
11	TACTICAL CHNL	R5 T6	UNASSIGNED	168.2375	151.4	168.2375	151.4	A	SQF TACTICAL		
12	VFIRE 25	VFIRE 25	STRUCTURE	154.2875	156.7	154.2875	156.7	A	STRUCTURE		
13	AIR TO GROUND	A/G TAC	A/G TAC	172.3500		172.3500		A	A/G TAC		
14	AIR TO GROUND	A/G CMD	A/G CMD	169.1500		169.1500		A	A/G CMD OVERHEAD ONLY		
15	TACTICAL CHNL	CALCORD	MEDEVAC	156.0750	156.7	156.0750	156.7	A	CALCORD MEDEVAC		
16	AIR GUARD	AIR GUARD	EMCY ONLY	168.6250		168.6250	110.9	A	AIR GUARD		
Prepared by (Communications Unit) COMM UNIT 925.588.6879 / COML DUSTIN SENE 406.581.9027					Incident Location SEQUOIA NF County _____ State CA Latitude _____ N Longitude 3-7-77 W						

The convention calls for frequency lists to show four digits after the decimal place, followed by either an "N" or a "W", depending on whether the frequency is narrow or wide band. Mode refers to either "A" or "D" indicating analog or digital (e.g. Project 25) or "M" indicating mixed mode. All channels are shown as if programmed in a control station, mobile or portable radio. Repeater and base stations must be programmed with the Rx and Tx reversed.

MEDICAL PLAN (ICS 206 WF) CIIMT 12

1. Incident Name			2. Operational Period				
SQF COMPLEX			Date/Time: 09/03/2020-9/04/2020 24 hours (0600-0600)				
3. EMS / Ground Ambulance Services/ Aid Stations/REMS							
Name	Location		Frequency/Phone		Advanced Life Support (ALS)		
IMPERIAL AMBULANCE	35659 CA-190 SPRINGVILLE, CA		DISP:559-687-3309		YES		
INCIDENT DEDICATED IMPERIAL AMBULANCE(S)	CASTLE 1 ASSIGNED TO NIGHT DIV CASTLE 2 DAYS - BLACKROCK STA.		CASTLE AMBS 1&2 ON COMMAND		YES		
INCIDENT DEDICATED AFS AMBULANCE (4WD)	Available to all SQF Complex Divisions STAGED AT DP 2 (0600-1800)		CASTLE AMB 3 ON COMMAND		YES		
CASTLE REMS	Available to all SQF Complex Divisions		CASTLE REMS ON COMMAND		YES		
ICP AID STATION	PORTERVILLE FAIRGROUNDS ICP		MEDL: 405-593-3369		NO		
WHITSETT AID STATION	WHITSETT BASE CAMP		WALK-UP SUPPLIES AND TREATMENT		NO		
AFS MEDICAL TRAILER	WHITSETT BASE CAMP		WALK-UP SUPPLIES AND TREATMENT		YES		
4. Air Rescue / Air Ambulance Services							
Name	Phone		Type of Aircraft & Capability				
KERN COUNTY FD H408	CASTLE COMM ON CMD		INCIDENT PRIMARY AIR RESCUE, ALS, 24/7 HOIST				
CHP H40 (FRESNO)	DISPATCH:559-262-0400 1HR FLIGHT TIME RESPONSE		Air Ambulance/Rescue, ALS 24/7, DAY HOIST ONLY STAFFING ON CALL AFTER 1800				
SKYLIFE	DISPATCH:800-305-5433		Air Ambulance/Rescue - ALS, NO HOIST LZ NEEDS TO BE 100X100				
US COAST GUARD	REGIONAL COMMAND CENTER 510-437-3701		AIR RESCUE, HOIST 24/7, NO IN-FLIGHT MEDICAL				
5. Hospitals (all times estimated from incident location)							
Name & Level	GPS Datum – WGS 84 Degrees Decimal Minutes		Travel Time Air Gnd		Phone	Helipad Yes No	Address
KAWEAH DELTA HEALTH CARE DISTRICT LEVEL 2 TRAUMA	Lat:	36° 19.65' N	30min	2.5hr	559-624-2000	X	400 W. Mineral King Ave. Visalia, CA 93291
	Long:	119° 17.676' W					
KERN MEDICAL CENTER LEVEL 2 TRAUMA	Lat:	35° 22.95' N	45min	3hr	661-333-5194	X	1700 MT Vernon Ave. Bakersfield, CA 93306
	Long:	118° 58.182' W					
COMMUNITY REGIONAL MEDICAL CENTER LEVEL 1 TRAUMA BURN CENTER	Lat:	36° 44.568' N	1hr	3hr	559-459-6000 ER:559-459-4220	X	2823 Fresno St. Fresno, CA 93721
	Long:	119° 47.094' W					
6. Division / Crew Emergency Pre-Plan <i>Update and discuss with assigned resources daily.</i>							
Fireline EMT / Medic's Division / Branch Location							
Air Hoist site location site: Lat: / Long: / Elevation:							
Helispot: Lat: / Long: / Elevation:							
7. Prepared By (Medical Unit Leader)			8. Date/Time		9. Reviewed By (Safety Officer)		10. Date/Time
MEDL Emily Ellick-Flettre 405-593-3369 MEDL (t) Nick Stepanian 909-908-4778			09/02/2020 1800 <i>Emily Ellick-Flettre</i>		SOF2 Gerold Vickers 443-614-4358		09/02/2020 1800 <i>Gerold Vickers</i>

MEDICAL PLAN (ICS 206 WF) CIIMT 12

Medical Incident Report

FOR A NON-EMERGENCY INCIDENT, WORK THROUGH CHAIN OF COMMAND TO REPORT AND TRANSPORT INJURED PERSONNEL AS NECESSARY.

FOR A MEDICAL EMERGENCY: IDENTIFY ON SCENE INCIDENT COMMANDER BY NAME AND POSITION AND ANNOUNCE "MEDICAL EMERGENCY" TO INITIATE RESPONSE FROM IMT COMMUNICATIONS/DISPATCH.

Use the following items to communicate situation to communications/dispatch.

1. CONTACT COMMUNICATIONS / DISPATCH (Verify correct frequency prior to starting report)

Ex: "Communications, Div. Alpha. Stand-by for Emergency Traffic."

2. INCIDENT STATUS: Provide incident summary (including number of patients) and command structure.

Ex: "Communications, I have a Red priority patient, unconscious, struck by a falling tree. Requesting air ambulance to Forest Road 1 at (Lat./Long.) This will be the Trout Meadow Medical, IC is TFLD Jones. EMT Smith is providing medical care."

Severity of Emergency / Transport Priority	<input type="checkbox"/> RED / PRIORITY 1 Life or limb threatening injury or illness. Evacuation need is IMMEDIATE <i>Ex: Unconscious, difficulty breathing, bleeding severely, 2° – 3° burns more than 4 palm sizes, heat stroke, disoriented.</i> <input type="checkbox"/> YELLOW / PRIORITY 2 Serious Injury or illness. Evacuation may be DELAYED if necessary. <i>Ex: Significant trauma, unable to walk, 2° – 3° burns not more than 1-3 palm sizes.</i> <input type="checkbox"/> GREEN / PRIORITY 3 Minor Injury or illness. Non-Emergency transport <i>Ex: Sprains, strains, minor heat-related illness.</i>	
Nature of Injury or Illness Mechanism of Injury	.	<i>Brief Summary of Injury or Illness (Ex: Unconscious, Struck by Falling Tree)</i>
Transport Request	.	<i>Air Ambulance / Short Haul/Hoist Ground Ambulance / Other</i>
Patient Location	.	<i>Descriptive Location & Lat. / Long. (WGS84)</i>
Incident Name	.	<i>Geographic Name + "Medical" (Ex: Trout Meadow Medical)</i>
On-Scene Incident Commander	.	<i>Name of on-scene IC of Incident within an Incident (Ex: TFLD Jones)</i>
Patient Care	.	<i>Name of Care Provider (Ex: EMT Smith)</i>

3. INITIAL PATIENT ASSESSMENT: Complete this section for each patient as applicable (start with the most severe patient)

Patient Assessment: See IRPG PAGE 106

Treatment:

4. TRANSPORT PLAN:

Evacuation Location (*if different*): (*Descriptive Location (drop point, intersection, etc.) or Lat. / Long.*) Patient's ETA to Evacuation Location:

Helispot / Extraction Site Size and Hazards:

5. ADDITIONAL RESOURCES / EQUIPMENT NEEDS:

Example: Paramedic/EMT, Crews, Immobilization Devices, AED, Oxygen, Trauma Bag, IV/Fluid(s), Splints, Rope rescue, Wheeled litter, HAZMAT, Extrication

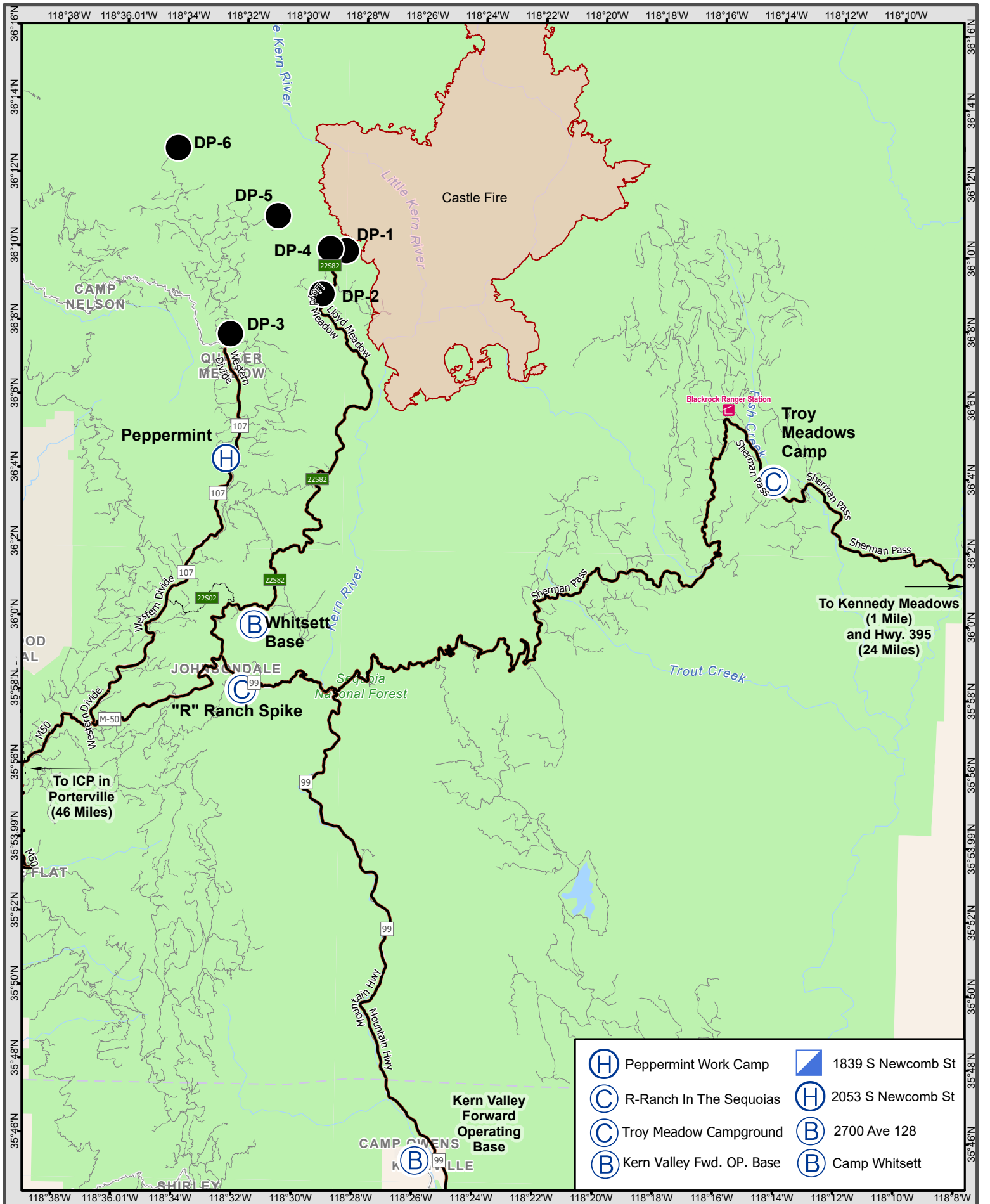
6. COMMUNICATIONS: Identify State Air/Ground EMS Frequencies and Hospital Contacts as applicable

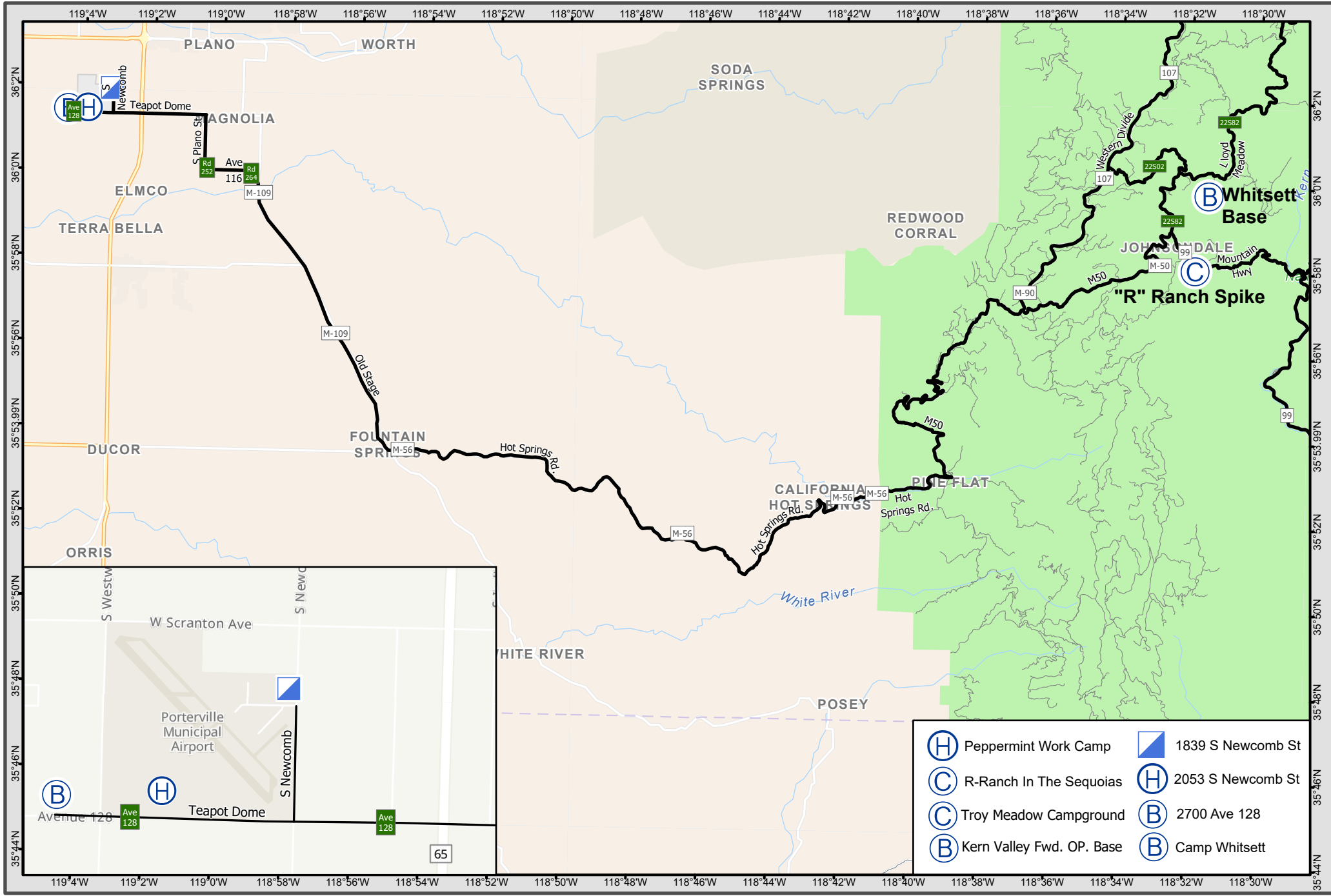
Function	Channel Name/Number	Receive (RX)	Tone/NAC *	Transmit (TX)	Tone/NAC *
COMMAND					
AIR-TO-GRND					
TACTICAL					

7. CONTINGENCY: Considerations: If primary options fail, what actions can be implemented in conjunction with primary evacuation method? Be thinking ahead.

8. ADDITIONAL INFORMATION: Updates/Changes, etc.

REMEMBER: Confirm ETA's of resources ordered. Act according to your level of training. Be Alert. Keep Calm. Think Clearly. Act Decisively.





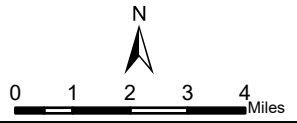
- | | |
|---------------------------|-------------------|
| Peppermint Work Camp | 1839 S Newcomb St |
| R-Ranch In The Sequoias | 2053 S Newcomb St |
| Troy Meadow Campground | 2700 Ave 128 |
| Kern Valley Fwd. OP. Base | Camp Whitsett |

- Helibase
- Incident Base
- Incident Command Post



TRANSPORTATION
SQF Complex
Sept 2, 2020

West Transportation Map
SQF Complex
CA-SQF-002622



TRANSPORTATION
SQF Complex
Sept 2, 2020

