

# EAST CASTLE ZONE SQF COMPLEX INCIDENT ACTION PLAN NIGHT SHIFT



CA-SQF-002541 P5NG2P (0513)

*Sequoia National Forest / Inyo National Forest  
Sequoia Kings Canyon National Park*



## OPERATIONAL PERIOD

Wednesday, September 16, 2020  
Thursday, September 17, 2020  
1800 to 0900

## Values

### Firefighters and Public Safety

**Communities:** *Ponderosa, Camp Nelson, Pyles Boys Camp, Rogers Camp, Sequoia Crest, Cedar Slope, Alpine Village, Redwood Drive, Lloyd Meadows, Mountain Aire, Pierpoint, Coy Flat*

**Infrastructure & Physical Assets:** *Osa, Beach, Casa Vieja and Beck Meadows, USGS Seismic Station, Blackrock RS, Quinn RS, Kern RS, Tule River Municipal Watershed, roads, bridges, utilities, other agency structures, private inholdings, dispersed and developed recreation sites*

**Cultural Sites:** *Monache Mountain, Monache Meadow, and other archaeological & cultural sites*

**Sequoia Groves:** *Freeman Giant Sequoia Grove, Dillonwood Grove, and other groves*

**TES Habitat:** *Pacific Fisher, Little Kern Golden Trout, Mountain Yellow Legged Frog, CA Spotted Owl, Goshawk, Sierra Nevada Bighorn Sheep*

<b>INCIDENT OBJECTIVES</b>	1. Incident Name	2. Date Prepared	3. Time Prepared
	<b>EAST CASTLE ZONE SQF COMPLEX</b>	9/15/2020	1930
<b>4. Operational Period</b>			
September 16 to September 17, 2020 0600 - 0600 DAY AND NIGHT SHIFT			
<b>5. General Control Objectives for the Incident</b>			
<ul style="list-style-type: none"> <li>• Provide point protection of values at risk within communities and associated infrastructure to prevent loss of structures, utilities, and developed sites and facilities including: <ul style="list-style-type: none"> <li>▪ The communities of Camp Nelson, Pyles Boys Camp, Rogers Camp, Cedar Slope, Sequoia Crest, Alpine Village, Redwood Drive, Lloyd Meadows, Mountain Aire, Ponderosa, Pierpoint, and Coy Flat,</li> </ul> </li> <li>• Infrastructure at Freeman Giant Sequoia Grove, Dillonwood Grove, and other groves; Blackrock, Kern, and Quinn Ranger Stations; Osa, Beach, Casa Vieja, and Beck Meadows; Tule River Municipal Watershed; private inholdings; roads, bridges, utilities; and developed and dispersed recreation sites.</li> <li>• Monache Mountain, Monache Meadow and other archaeological and cultural sites.</li> <li>• Continue to hold and establish control lines that are safe for firefighters and provide a high probability of success to keep the fire north of Durr Wood Camp and west of Toowa Range to King Fisher Ridge to 22S05 Road.</li> <li>• Monitor the spread/growth of the Shotgun Fire using air operation assets.</li> <li>• Coordinate with Duty Officers from the Sequoia and Inyo NFs, Sequoia and Kings Canyon NPs, and the Tule River Indian Reservation on support to any new initial attack.</li> </ul>			
<b>6. Management Objectives</b>			
<ul style="list-style-type: none"> <li>• Establish and implement common objectives and strategies under unified command with Cal Fire Team 6.</li> <li>• Implement suppression actions that have a high potential for success, carefully weighing risk exposure to firefighters.</li> <li>• Provide for the safety of firefighters, aviation and public through clear communication. Ensure an understanding of strategies and tactics, including a clearly defined and obtainable end state, in order to facilitate sound risk mitigation decision making.</li> <li>• Implement social distancing and adhere to the “module of one” concept to reduce physical exposure and transmission of COVID-19, to provide for the health and safety of all incident personnel.</li> <li>• Minimize to the extent feasible smoke exposure to firefighters, communities and other affected areas to reduce susceptibility to the consequences from COVID-19 exposure.</li> <li>• Maintain and strengthen relationships with partner agencies, stakeholders, cooperators, community leaders, and local agencies utilizing most effective platforms available.</li> <li>• Minimize adverse effects from suppression actions on riparian areas, wetlands, Little Kern Golden Trout, Mountain Yellow Legged Frog, California Spotted Owl, Pacific Fisher, and Sierra Nevada Bighorn Sheep habitats.</li> <li>• Minimize impacts to Wilderness areas; use minimum impact suppression tactics (MIST) by utilizing trails, streams, ridges and natural barriers when possible for control lines.</li> </ul>			
<b>7. Commander’s Intent</b>			
<ul style="list-style-type: none"> <li>• <b>Safety:</b> Address fire fighter, public, and aviation safety through hazard/exposure mitigation.</li> <li>• <b>Communication:</b> We will keep the Agency Administrators informed of significant accomplishments and issues.</li> <li>• <b>Risk Management:</b> We will use a robust risk assessment process to mitigate unnecessary risk to fire fighters and update and/or revise decisions as necessary.</li> <li>• <b>Human Resources:</b> We will ensure that all incident personnel be treated with dignity and respect. We have a zero tolerance for harassment, alcohol, or illegal drug use.</li> <li>• <b>Operations:</b> We will make informed tactical decisions engaging the fire in the right locations with the appropriate resources.</li> <li>• <b>Public Information:</b> We will provide timely and accurate information through the press, meetings, trap lines, briefings, and social media.</li> <li>• <b>Stakeholders:</b> We will coordinate with the delegating agencies to identify key partners and keep them effectively informed of progress and to use their local knowledge.</li> <li>• <b>Finance:</b> We will establish and monitor cost effective methods for accomplishing incident objectives.</li> </ul>			
<b>8. ATTACHMENTS (X IF ATTACHED)</b>			
<input checked="" type="checkbox"/> Organization List - ICS 203	<input checked="" type="checkbox"/> Medical Plan - ICS 206	<input type="checkbox"/>	_____
<input checked="" type="checkbox"/> Division Assignment Lists - ICS 204	<input checked="" type="checkbox"/> Unit Log 214	<input type="checkbox"/>	_____
	<input checked="" type="checkbox"/> WF206 8 Line	<input type="checkbox"/>	_____
<b>9. Prepared By (Planning Section Chief)</b>		<b>10. Approved By (Incident Commander)</b>	
Rob Carlin PSC1 (t)		Michael Goicoechea IC	

<b>ORGANIZATION ASSIGNMENT LIST</b>				Medical Unit	Emily Ellick-Flettire 405.593.3369 / Levi Clymer	
1. Incident Name		East Castle Zone SQF Complex		Security Manager	Brian Thietje 262.994.8001	
2. Date Prepared	9/15/2020	3. Time Prepared	1700	<b>Operations Section</b>		
4. Operational Period				Field Operations	Scott Schrenk	
September 16, 2020 to September 17, 2020				Planning Operations	Brent Olson 406.249.4994 / Shawn Borgen (t)	
0600 to 0600				Night Operations	Andy James (t)	
<b>Incident Commander and Staff</b>						
Incident Commander	Mike Goicoechea			Branch I Director	Justin Kaber	
Deputy	Mark Goeller / Greg Poncin			Branch II Director	Ryan Butler	
Safety Officer	Dan Cassidy / Todd Mott (t)			Structure Branch	Drew Daily	
Information Officer	Jeannette Smith 406.544.0131			<b>Branch I</b>		
Liaison Officer	Rob Taylor 406.544.4679			Alpha	Kate Airhart	
<b>Agency Representative</b>						
SQF AA	Constance Cummins / Ann Niesen (t)			Bravo	Rocky Wagoner	
SQF and INFAR	Phillip DeSenze			Yankee / Zulu	Stryker Clark / Jerry Olson (t)	
INF AA	John (Pancho) Smith			<b>Branch II</b>		
SEKI AA	Lee Taylor			Whiskey	Mike King / Graydon Galloway (t)	
SEKI AR	Tom Garcia			<b>Branch V</b>		
BLM AA	Gabe Garcia			Backcountry / Lima	Geoff Farinholt / Richard Baker (t)	
BLM AR	Leif Mathiesen			<b>Structure</b>		
Tule River Tribe AR	Zane Santos 559.554.5433			Nelson	Hunter Seaborn Bell, III	
Cal Fire AR	Jesse Estrada			Ponderosa	Hunter Bell / Tom McLeod (t)	
NWR AA	Kirk Gilligan			<b>Night</b>		
Tulare Co FD	Jeff McLaughlin			Alpha / Bravo	Jon Norman	
Tulare CO Sheriff	Lt. Bobby Rader 559.731.3754			Ponderosa	Danny Wristen	
SoCAL Edison	Troy Whitman			Yankee / Zulu	Bret Davidson / John Lange (t)	
CHP	Chad Patton			Structure	Derek Steidley	
Tribal Liaison	Dirk Charley 559.554.5433			<b>Air Operations Branch</b>		
INBA	Nancy Gibson 530.598.8293			Branch Director	Dennis Morton 406.660.2318	
<b>Planning Section</b>						
Section Chief	Robin Jermyn 406.360.5936 / Rob Carlin (t)			Air Support Group Sup	John McKee 406.370.7028 / Dan Sepulveda	
Deputy	Rob Gump 850.688.7623			Air Tactical Group Sup	Tony Duprey / Ken Crow	
Situation Unit	Derek Trauntvein 307.431.8598 Nate Meyer			<b>Finance Section</b>		
Demobilization Unit	Tanya Murphy 951.235.1568			Section Chief	Amy Schrenk 406.830.5214	
Resources Unit Leader	Anya Moline 406.366.1979 / Anthony Watts (t)			Time Unit	Marta Lujan 970.275.3120	
Status Check-in	Faith Ann Heinsch 858.204.7419			Equipment Time	Lynda Pike 406.382.0086	
Fire Behavior Analyst	Brian Anderson 406.660.0450 / David Greathouse			Personnel Time	Tama Lester 580.212.1017	
Long-Term Analyst	LaWen Hollingsworth 406.552.5440 / Alicia Reiner (t)			Cost Unit	Khon Viengkham 703.217.7269	
GIS Specialist	Erin Heiselmann 406.546.4014 Morgan Voss / McIntyre Murphy (t)			Procurement Unit Leader	Dana Bangart 406.360.0029	
Computer Specialist	Tim McCracken 303.859.7753			Comps / Claims	Leon Augustine 406.363.8956 Shannon Maxwell (t) 406.366.3724	
Meteorologist	Dan Byrd 240.778.4278			<b>WHITSETT ORGANIZATION</b>		
Human Resource	Debby Hassel 406.274.7985			Deputy IC	Mark Goeller	
Training Specialist	Matt Boss (t) 951.314.1427			Safety	Todd Mott (t)	
<b>Logistics Section</b>						
Section Chief	Charlie Showers 406.370.3787 Jim Evanoff 406.223.8660 / LeRoy Evans (t)			Operations	Scott Schrenk / Andy James (t)	
Ordering Manager	Rita Lind 310.650.1222 or 423.534.9699 Kristin Troop (virtual)			Plans	Rick Moore	
Supply Unit	Josh King 406.855.0984 / Brent Elmore (t)			Logistics	Roylene Gaul	
Facilities Unit	James Andruzzi 917.443.2556 / Matt LaTray			<b>TROY MEADOWS ORGANIZATION</b>		
Base Camp	Patrick Beers (t) 253.318.7992			Base Camp Manager	Pat Beers 253.318.9792	
Ground Support Unit	Keith Windell 213.503.4243			<b>CAMP NELSON ORGANIZATION</b>		
Communications Unit	Dustin Sene 406.581.9816			Base Camp Manager	Bill Fitch 631.978.8084 or 559.542.2511	
Communications Tech	Trent Coppinger 406.581.9027			<b>CAL FIRE TEAM 6</b>		
				Field Operations – Eric Schwab 530.708.2702 / Night Operations – Justin McGough, 951.482.9432 / Planning Operations – Scott Lane 951.581.2283		
				<b>Prepared by:</b>	<b>Anya Moline - RESL</b>	

## **SAFETY MESSAGE**

### **Wildland/Urban Interface Considerations**

The wildland/urban interface is more than a geographic area or zone where structures meet or intermingle with wildland fuels. It is a set of conditions where flammable structures exist within the reach of ignition sources, primarily firebrands, from burning wildland and structural fuels. Often, as severe wildland fires meet structural developments, vegetation ceases to burn but catastrophic fire continues, sustained by structures igniting and perpetuating these events even a mile or more from wildland fuels. The potential exists in areas of wildland/urban interface conditions for extremely dangerous and complex fire conditions which can pose a tremendous threat to public and firefighter safety.

#### **WILDLAND-URBAN WATCHOUTS BULLET CHECKLIST**

- **WOODEN CONSTRUCTION**
- **POOR ACCESS**
- **LACK OF WATER**
- **FUELS < 30' FROM STRUCTURES**
- **EXTREME FIRE BEHAVIOR**
- **STRONG WINDS**
- **EVACUATION OF THE PUBLIC**
- **IN CHIMNEYS, SADDLES, NARROW CANYONS**
- **BRIDGE LOAD LIMITS**

**When in Doubt, dismount, take time to do a thoughtful assessment, and use all available resources to make decisions regarding engagement.**

**\*Also reference pages 12-16 in IRPG**



# FIRE WEATHER FORECAST



**FORECAST NO:** 24  
**PREDICTION FOR:** Sept 16-17, 2020 0600-0600

**INCIDENT NAME:** Sequoia Complex

**UNIT:** CA-SQF  
**SIGNED:** *Dan Byrd*

**TIME AND DATE**  
**FORECAST ISSUED:** Tue, Sep 15 @ 2000 hours

**Incident Meteorologist – Dan Byrd**

**WEATHER DISCUSSION:** Wednesday will bring another day of the hot and dry conditions with mostly sunny skies, but there will be continued smoke over the area. High temperatures will be consistent from yesterday, with min RH's in the upper single digits to mid-teens. The winds at the ridges will be out of the south today becoming more southwesterly tonight. Clear skies will prevail once again tonight, with very poor RH recoveries. An upper trough will begin to effect the area on Thursday, with slightly cooler temperatures and southwest winds. An upper trough will move across the region on Friday, with gusty west-southwest winds. A shower a thunderstorms cannot be ruled out Friday afternoon or evening.

**SKY/WEATHER TODAY (WEDNESDAY):** Mostly sunny, hot and dry with high level smoke from surrounding fires. Expect the weak inversion to break by 0900-1000.

**MAX TEMPERATURES / MIN RELATIVE HUMIDITY:**

**5000 FT:** 85 to 91 degrees (Down 1) / 7 to 12 (Down 2-4%)  
**7000 FT:** 76 to 82 degrees (Down 1) / 10 to 15 (Down 2-4%)

**EYE LEVEL WINDS:**

**Slope/Valley:** Morning drainage winds will become south to southwest after 1000-1100 with speeds 8 to 12 gusts to 18 mph. Stronger winds in aligned drainages and canyons. The winds will become westerly 4-6 G10 after 1600-1700.

**Ridges:** South to south-southwest 8 to 12 G15 mph.

**MIXING HEIGHT...**8,000 FT AGL **VENTILATION...** Excellent

**TRANSPORT WIND...** South 8-12 mph.  
CWR (0.10")....0% LAL....1 **HAINES....5**

**SKY/WEATHER TONIGHT (WEDNESDAY NIGHT):** Mostly clear with heavy smoke in the Kern River Valley. Overnight RH recoveries will be very poor.

**MIN TEMPERATURES / MAX RELATIVE HUMIDITY**

**5000 FT:** 57 to 62 degrees (Steady) / 15 to 20% (Down 5-10%)  
**7000 FT:** 55 to 60 degrees (Steady) / 10 to 15% (Down 5-10%)

**EYE LEVEL WINDS:**

**Slope/Valley:** The drainage winds will become gusty out of the northeast in the Tule River drainage overnight. North to northeast 3 to 6 mph elsewhere.

**Ridges:** South to Southwest 8 to 12 mph.

**CWR (0.10")....0% LAL....1**

**THURSDAY:** Inversion lifting by 0900-1000. Partly cloudy. Smoke aloft from surrounding fires.

**Max Temps:** 73 to 89. **Min RH:** 8 to 18%. **Winds:** **Slope/Valley:** Morning drainage winds becoming south to southwest 6-10 G18 mph in the afternoon. **Ridge:** Southwest 5 to 10 G18 mph in the afternoon.

**LAL:** 1 **CWR (0.10"):** 0% **MIXING HEIGHT:** 7,000 FT AGL **HAINES:** 4

**OUTLOOK for FRIDAY Through SUNDAY:**

**FRIDAY:** Partly Cloudy to Mostly cloudy. Slight chance of a shower or thunderstorm. **High Temp:** 71-85. **Min RH:** 20. **Ridge Wind:** WSW 10-15 G25 mph.

**SATURDAY:** Partly Cloudy. **High Temp:** 69-83. **Min RH:** 19. **Ridge Wind:** WSW 6-10 G18 mph.

**SUNDAY:** Mostly sunny. **High Temp:** 71-85. **Min RH:** 15. **Ridge Wind:** S-SW 6-10 G18 mph.

# FIRE BEHAVIOR FORECAST

FORECAST NUMBER: 26 Day	TYPE OF FIRE: Wildland
FIRE NAME: Sequoia Complex	OPERATIONAL PERIOD: 9/16/2020 0600-2000
DATE ISSUED: September 15, 2020	TIME ISSUED: 0600
UNIT: CA-Sequoia National Forest	SIGNED: /s/ Brian Anderson FBAN

## WEATHER

**\*\*Worsening humidity recoveries and increasing fire behavior\*\***

(See Weather forecast for details)

*Weather thresholds for large fire growth: Temps greater than 83°, RH's less than 20%, 20ft winds greater than 7mph*

**Rule of Thumb – To figure 20' winds, divide the observed eye level winds by .4**

## FUELS

**Fuels-** There are three primary fuels in the fire area. In the higher elevations above 5000' mixed conifer fuel types with a heavy load of dead and down dominate the fire area. At the mid elevations the fuels transition into more of a brush type. This will include most burn scars in the area. At the lower elevations, grass is the dominate fuel. There is a heavy component of beetle killed timber in the grey stage throughout the fire area. These pockets could lead to increased dead fuel loads in these areas. The fuels are very dry for this time of year. The ERC's are currently near the 97<sup>th</sup>. The 100-hr and 1000-hr fuels are at 6% and 7%. These indices indicate that all dead fuel will contribute to fire intensity.

**Topography-** Topography in the fire area is dominated by two features. The Kern river valley runs north/south and bisects the fire can produce diurnal up/down slope winds that can be strong enough to overpower the prevailing winds. The Tule River Canyon on the west side of the fire runs from the San Joaquin valley to east to about Ponderosa. This canyon can affect the winds and associated fire spread, especially at night.

## FIRE BEHAVIOR

Tonight's maximum fire potential (Head Fire, 2%-4% fine dead fuel moisture)

**REMEMBER:** These are rates of spread for surface fire only, crown fire and spotting will increase the overall rates of spread

Timber			
	0% Slope	30% Slope	60% Slope
Rate of Spread	10-12 ch/hr	14-18 ch/hr	19-21 ch/hr
Flame Lengths	4-7'	6-8'	8-10'
Brush			
	0% Slope	30% Slope	60% Slope
Rate of Spread	3-5 ch/hr	5-7 ch/hr	10-12 ch hr
Flame Lengths	3-4'	4-6'	6-8'

**Rule of Thumb:** Cut head fire flame lengths and rate of spread in half for flanking fire, backing fire 2'-4' flame lengths with rates of spread of 3-4 ch/hr

**All Divisions:** Humidity recoveries are expected to be poor this morning, leading to an early start to the burn period. Active burning will occur again today with mainly surface fire, moderate to high rates of spread, especially in the timber fuel types. As the day heats up, single tree and / or group tree torching is probable. Watch for downwind spotting today (up to ½ mile) as the probability for ignition is 80%-100%. As fire becomes established in the Tule Canyon, pay attention to the canyon winds as they can highly influence fire behavior day or night.

**DIVS A/B/Y/Z-** Fire will continue to be heavily influenced by winds and terrain. With relatively light general winds, terrain winds will dominate direction of spread and can be completely different than the forecasted direction. If a spot becomes established in the bottom of Peppermint creek, winds are likely to line up with topography and increased spread rates to the north.

## AIR OPERATIONS

Early morning inversions may affect aviation operations.

## SAFETY

As weather and fuel conditions change, watch for the cumulative effect. Small changes in winds, RH, and atmospheric instability may be small by themselves, but cumulatively they can add up to significant fire behavior changes.

DIVISION ASSIGNMENT LIST				Branch		Division/Group			
Incident Name				I		ALPHA			
EAST CASTLE ZONE SQF COMPLEX				Operational Period					
				Date: 9/16/2020 to 9/17/2020 Time: 0600-0600					
Operations Personnel									
Operations Chief		Brent Olson, Scott Schrenk Shawn Borgen (t)		Branch Director		Justin Kaber 406-250-1455			
Air Operations		Dennis Morton, John McKee Dan Sepulveda		Division/Group Supervisor		Kate Airhart 406-360-0506			
Safety Officer		Dan Cassidy, Gerald Vickers, Todd Mott (t)							
Resources Assigned This Period									
Strike Team/Task Force/ Resource Designator		Req#	Last Shift	Leader	# Persons	Drop Off Point /Time	Pick Up Point / Time		
HC2 Patrick 1		C-90	9/19	Joshua Chilest	20	Whitsett Base 0600	Whitsett Base 2100		
TFLD			9/22	Matt Chambers	1	Whitsett Base 0600	Whitsett Base 2100		
TFLD (t)		O-336	9/21	Scott Turner	1	Whitsett Base 0600	Whitsett Base 2100		
ENG6 High Desert		E-137	9/28	Thomas Hanks	3	Whitsett Base 0600	Whitsett Base 2100		
ENG6 Red Dog		E-167	9/28	Tim England	2	Whitsett Base 0600	Whitsett Base 2100		
WTT2 49ers		E-50	9/27	Steve Smith	1	Whitsett Base 0600	Whitsett Base 2100		
GRD2 Kirklang		E-97	9/17	Todd Adams	2	Whitsett Base 0600	Whitsett Base 2100		
SOF2 (t)		O-389	9/16	James Gregory	1	Whitsett Base 0600	Whitsett Base 2100		
EMPF		O-974	9/28	Larry Hoqueisson	1	Whitsett Base 0600	Whitsett Base 2100		
EMPF		O-958	9/28	Brian Boulware	1	Whitsett Base 0600	Whitsett Base 2100		
REAF		O-894	9/27	Jared Kellogg	1	Whitsett Base 0600	Whitsett Base 2100		
REAF (t)		O-398	9/17	Noah Hirsch	1	Whitsett Base 0600	Whitsett Base 2100		
Work Assignments									
<p><b>Task:</b> Assess opportunities and implement point source protection to values in the Ponderosa, Quaking Aspen and Peppermint work center areas where feasible and safe to engage. Continue to utilize aircraft to limit fire spread around values. Implement firing operations as directed by Branch 1. Coordinate suppression actions with DIV B, DIV Y/Z and Ponderosa Structure Group.</p> <p><b>Purpose:</b> Minimize fire impacts to values within the mountain communities located within the DIV.</p> <p><b>End State:</b> Limit fire spread into additional values at risk to protect communities and infrastructure.</p>									
Special Instructions									
<ul style="list-style-type: none"> <li>Personnel to notify DIVS of potentially sensitive cultural materials.</li> <li>Castle Ambulance 3 staged at Whitsett Base Camp. Castle Ambulance 2 staged at Blackrock Ranger Station. Medic Team 1 available to all Branch I divisions.</li> <li>Prioritization of all control or containment actions taken during the operational period in this Division will be at the discretion of the DIVS. Actions may have to be taken by the DIVS that are not enumerated in today's IAP. These actions would be a result of a significant change in actual or expected fire behavior over and above that anticipated at the time the IAP was prepared. These actions will be coordinated with and approved by the OSC whenever possible.</li> </ul>									
Division/Group Communication Summary									
Function COMMAND NIFC T1	Channel	Frequency RX	Frequency TX	TONE RX	TONE TX	Function A/G TAC A/G CMD	Channel	Frequency RX	Frequency TX
	1	170.0000	166.6750	151.4	151.4		13	172.3500	172.3500
	5	168.0500	168.0500	151.4	151.4		14	169.1500	169.1500
Prepared by Anya Moline - RESL		Approved By Robin Jermyn - PSC				Date 9/15/2020		Time 1800	

DIVISION ASSIGNMENT LIST			Branch			Division/Group				
Incident Name			I			BRAVO				
EAST CASTLE ZONE SQF COMPLEX			Operational Period							
			Date: 9/16/2020 to 9/17/2020 Time: 0600-0600							
Operations Personnel										
Operations Chief	Brent Olson, Scott Schrenk Shawn Borgen (t)			Branch Director			Justin Kaber 406-250-1455			
Air Operations	Dennis Morton, John McKee Dan Sepulveda			Division/Group Supervisor			Rocky Wagoner 406-531-9809			
Safety Officer	Dan Cassidy, Gerald Vickers Todd Mott (t)									
Resources Assigned This Period										
Strike Team/Task Force/ Resource Designator	Req#	Last Shift	Leader	# Persons	Drop Off Point /Time	Pick Up Point / Time				
HC1 Los Padres	C-110	9/28	Los Padres	19	Whitsett Base 0600	Whitsett Base 2100				
HC1 Cherokee	C-83	9/17	Josh Tester	20	Whitsett Base 0600	Whitsett Base 2100				
WFM Whiskey Flat	O-574	9/18	Travis Clendenen	9	Whitsett Base 0600	Whitsett Base 2100				
TFLD	O-582	9/18	Robert Bundy	1	Whitsett Base 0600	Whitsett Base 2100				
ENG3 Kinsley	E-249	9/18	Kurt Edwards	1	Whitsett Base 0600	Whitsett Base 2100				
ENG6 Allen E619	E-312	9/22	Peter Allen	3	Whitsett Base 0600	Whitsett Base 2100				
ENG6 Double D	E-313	9/22	Matthew Dimas	3	Whitsett Base 0600	Whitsett Base 2100				
DO22 Shannon Bros	E-45	9/27	John Shannon	1	Whitsett Base 0600	Whitsett Base 2100				
DO22 Westlund	E-139	9/19	Alan Westlund	2	Whitsett Base 0600	Whitsett Base 2100				
EXC2 Denis Equipment	E-188	9/22	Anthony Pezzi	2	Whitsett Base 0600	Whitsett Base 2100				
FMOD Sky Lake	O-19	9/28	Joby Chism	2	Whitsett Base 0600	Whitsett Base 2100				
FMOD Timbersmith	O-177	9/16	Ryan Deniz	2	Whitsett Base 0600	Whitsett Base 2100				
SOF2	O-496	9/23	Tom Nash	1	Whitsett Base 0600	Whitsett Base 2100				
SOF2 (t)	O-888	9/26	Roy Cribb	1	Whitsett Base 0600	Whitsett Base 2100				
Medic Team 1	E-217	9/19	Devon Pulvino	3	Whitsett Base 0600	Whitsett Base 2100				
Work Assignments										
<p><b>Task:</b> Implement point source protection around values in Pierpoint, Camp Nelson and Alpine Village where feasible. Utilize aerial resources to limit fire spread around values at risk. Utilize direct and indirect tactics to work toward containing spread and evaluate opportunities for indirect containment lines farther to the south. Coordinate with division A to ensure an integrated strategy. Coordinate all actions with incoming Cal Fire Team 6.</p> <p><b>Purpose:</b> Minimize impacts to surrounding communities and limit fire spread to the south and west.</p> <p><b>End State:</b> Impacts to local communities and infrastructure was kept to a minimum.</p>										
Special Instructions										
<ul style="list-style-type: none"> <li>Personnel to notify DIVS of potentially sensitive cultural materials.</li> <li>Castle Ambulance 3 staged at Whitsett Base Camp. Castle Ambulance 2 staged at Blackrock Ranger Station. Medic Team 1 available to all Branch I divisions.</li> <li>Prioritization of all control or containment actions taken during the operational period in this Division will be at the discretion of the DIVS. Actions may have to be taken by the DIVS that are not enumerated in today's IAP. These actions would be a result of a significant change in actual or expected fire behavior over and above that anticipated at the time the IAP was prepared. These actions will be coordinated with and approved by the OSC whenever possible.</li> </ul>										
Division/Group Communication Summary										
Function	Channel	Frequency RX	Frequency TX	TONE RX	TONE TX	Function	Channel	Frequency RX	Frequency TX	
	COMMAND NIFC T3	1	170.0000	166.6750	151.4		151.4	A/G TAC	13	172.3500
		6	168.6000	168.6000	151.4	151.4	A/G CMD	14	169.1500	169.1500
Prepared by Anya Moline – RESL		Approved By Robin Jermyn - PSC				Date 9/15/2020		Time 1800		



DIVISION ASSIGNMENT LIST				Branch		Division/Group				
Incident Name				I		YANKEE / ZULU				
						Page 1 of 2				
EAST CASTLE ZONE SQF COMPLEX				Operational Period						
				Date: 9/16/2020 to 9/17/2020 Time: 0600-0600						
Operations Personnel										
Operations Chief		Brent Olson, Scott Schrenk Shawn Borgen (t)			Branch Director			Justin Kaber 406-250-1455		
Air Operations		Dennis Morton, John McKee Dan Sepulveda			Division/Group Supervisor			Stryker Clark / Jerry Olson (t) 406-546-7405		
Safety Officer		Dan Cassidy, Gerald Vickers Todd Mott (t)								
Resources Assigned This Period										
Strike Team/Task Force/ Resource Designator		Req#	Last Shift	Leader		# Persons	Drop Off Point /Time		Pick Up Point / Time	
HC2 Fery		C-92	9/20	Ryan Hoffman-Wentling		20	Whitsett Base 0600		Whitsett Base 2100	
TFLD		O-946	9/28	Ron Seymour		1	Whitsett Base 0600		Whitsett Base 2100	
ENG3 Green Valley		E-356	9/28	Mike Carrafa		3	Whitsett Base 0600		Whitsett Base 2100	
ENG3 Avondale Brush		E-357	9/28	Steve Mayhew		4	Whitsett Base 0600		Whitsett Base 2100	
ENG3 Tri City Fire		E-358	9/28	Servondo Henry		4	Whitsett Base 0600		Whitsett Base 2100	
ENG3 Brush 302		E-359	9/28	Chris Ader		3	Whitsett Base 0600		Whitsett Base 2100	
ENG6 J3 Contracting		E-355	9/28	Ric Hodges		3	Whitsett Base 0600		Whitsett Base 2100	
ENG6 J3 Contracting		E-364	9/28	John Piety		3	Whitsett Base 0600		Whitsett Base 2100	
WTT2 Hart		E-348	9/28	Robert McCleve		1	Whitsett Base 0600		Whitsett Base 2100	
WTT2 Hart		E-351	9/28	Jacob Tennyson		1	Whitsett Base 0600		Whitsett Base 2100	
TFLD		C-83.20	9/16	Phil Reid		1	Whitsett Base 0600		Whitsett Base 2100	
TFLD		O-259	9/23	Isaac Solomon		1	Whitsett Base 0600		Whitsett Bsse 2100	
TFLD (t)		C-83.3	9/16	Mason Vance		1	Whitsett Base 0600		Whitsett Base 2100	
ENG3 A-1 Fire Services		E-79	9/19	Lawrence Wyatt		2	Whitsett Base 0600		Whitsett Base 2100	
ENG4 Troy		E-134	9/19	Dan Hokanson		3	Whitsett Base 0600		Whitsett Base 2100	
<b>Work Assignments</b>										
<b>Task:</b> Implement point source protection to values in Ponderosa, Pyles Camp, Lloyd Meadows and Freeman Grove. Scout for direct and indirect containment opportunities along the southern edge and continue to improve existing indirect containment lines. Monitor and manage fire effects to the extent possible in the Freeman Grove. Coordinate with DIV A, Ponderosa Structure Group and Lloyd Structure Group.										
<b>Purpose:</b> Minimize impacts to values and limit fire spread to the southwest.										
<b>End State:</b> Fire impacts to private property and infrastructure is minimized to the extent possible, natural resource impacts are limited, and there are no accidents or injuries to firefighters or the public.										
<b>Special Instructions</b>										
<ul style="list-style-type: none"> <li>Personnel to notify DIVS of potentially sensitive cultural materials.</li> <li>Castle Ambulance 3 staged at Whitsett Base Camp. Castle Ambulance 2 staged at Blackrock Ranger Station. Medic Team 1 available to all Branch I divisions.</li> <li>Crews be prepared to spike.</li> <li>Prioritization of all control or containment actions taken during the operational period in this Division will be at the discretion of the DIVS. Actions may have to be taken by the DIVS that are not enumerated in today's IAP. These actions would be a result of a significant change in actual or expected fire behavior over and above that anticipated at the time the IAP was prepared. These actions will be coordinated with and approved by the OSC whenever possible.</li> </ul>										
<b>Division/Group Communication Summary</b>										
<b>Function</b>	Channel	Frequency RX	Frequency TX	TONE RX	TONE TX	<b>Function</b>	Channel	Frequency RX	Frequency TX	
COMMAND	1	170.0000	166.6750	151.4	151.4	A/G TAC	13	172.3500	172.3500	
NIFC T6	8	166.7750	166.7750	151.4	151.4	A/G CMD	14	169.1500	169.1500	
Prepared by Anya Moline - RESL		Approved By Robin Jermyn - PSC				Date 9/15/2020			Time 1800	

DIVISION ASSIGNMENT LIST				Branch		Division/Group					
Incident Name				I		YANKEE / ZULU Page 2 of 2					
EAST CASTLE ZONE SQF COMPLEX				Operational Period							
				Date: 9/16/2020 to 9/17/2020 Time: 0600-0600							
Operations Personnel											
Operations Chief		Brent Olson, Scott Schrenk Shawn Borgen (t)			Branch Director			Justin Kaber 406-250-1455			
Air Operations		Dennis Morton, John McKee Dan Sepulveda			Division/Group Supervisor			Stryker Clark / Jerry Olson (t) 406-546-7405			
Safety Officer		Dan Cassidy, Gerald Vickers Todd Mott (t)									
Resources Assigned This Period											
Strike Team/Task Force/ Resource Designator		Req#	Last Shift	Leader		# Persons	Drop Off Point /Time		Pick Up Point / Time		
WTT2 Dust Busters		E-49	9/21	Nathan Stutz		2	Whitsett Base 0600		Whitsett Base 2100		
WTT2 Valley Farm		E-88	9/23	Jeff Bates		1	Whitsett Base 0600		Whitsett Base 2100		
WTT2 Central 25		E-146	9/20	Jeff Nevins		2	Whitsett Base 0600		Whitsett Base 2100		
CHIP McKellar		E-190	9/16	Bret Strong		2	Whitsett Base 0600		Whitsett Base 2100		
SKG2 Alvord Fire		E-194	9/16	Bernard Saul		2	Whitsett Base 0600		Whitsett Base 2100		
DOZ2 Connor		E-83	9/23	Tim Connor		1	Whitsett Base 0600		Whitsett Base 2100		
EXC2 Shannon Bros		E-179		Chuck Sandborg		1	Whitsett Base 0600		Whitsett Base 2100		
FMOD Swedberg Const.		O-599	9/22	Wade Giguere		2	Whitsett Base 0600		Whitsett Base 2100		
EMPF		O-233	9/17	Silas Fischer		1	Whitsett Base 0600		Whitsett Base 2100		
EMPF		O-827	9/20	Tom Zamora		1	Whitsett Base 0600		Whitsett Base 2100		
EMPF		O-91	9/29	Royce Copeman		1	Whitsett Base 0600		Whitsett Base 2100		
AMBU		E-170	9/27	Castle 3		2	Whitsett Base 0600		Whitsett Base 2100		
REAF		O-229	9/19	Lanny Flaherty		1	Whitsett Base 0600		Whitsett Base 2100		
REAF		O-277	9/18	Scott Dailey		1	Whitsett Base 0600		Whitsett Base 2100		
Work Assignments											
<p><b>Task:</b> Implement point source protection to values in Ponderosa, Pyles Camp, Lloyd Meadows and Freeman Grove. Scout for direct and indirect containment opportunities along the southern edge and continue to improve existing indirect containment lines. Monitor and manage fire effects to the extent possible in the Freeman Grove. Coordinate with DIV A, Ponderosa Structure Group and Lloyd Structure Group.</p> <p><b>Purpose:</b> Minimize impacts to values and limit fire spread to the southwest.</p> <p><b>End State:</b> Fire impacts to private property and infrastructure is minimized to the extent possible, natural resource impacts are limited, and there are no accidents or injuries to firefighters or the public.</p>											
Special Instructions											
<ul style="list-style-type: none"> <li>Personnel to notify DIVS of potentially sensitive cultural materials.</li> <li>Castle Ambulance 3 staged at Whitsett Base Camp. Castle Ambulance 2 staged at Blackrock Ranger Station. Medic Team 1 available to all Branch I divisions.</li> <li>Crews be prepared to spike.</li> <li>Prioritization of all control or containment actions taken during the operational period in this Division will be at the discretion of the DIVS. Actions may have to be taken by the DIVS that are not enumerated in today's IAP. These actions would be a result of a significant change in actual or expected fire behavior over and above that anticipated at the time the IAP was prepared. These actions will be coordinated with and approved by the OSC whenever possible.</li> </ul>											
Division/Group Communication Summary											
Function		Channel	Frequency RX	Frequency TX	TONE RX	TONE TX	Function		Channel	Frequency RX	Frequency TX
COMMAND		1	170.0000	166.6750	151.4	151.4	A/G TAC		13	172.3500	172.3500
NIFC T6		8	166.7750	166.7750	151.4	151.4	A/G CMD		14	169.1500	169.1500
Prepared by Anya Moline - RESL			Approved By Robin Jermyn - PSC				Date 9/15/2020			Time 1800	

DIVISION ASSIGNMENT LIST		Branch	Division/Group
Incident Name		<b>II</b>	<b>WHISKEY</b>
EAST CASTLE ZONE SQF COMPLEX		Operational Period	
		Date 9/16/2020 to 9/17/2020	Time 0600-0600
Operations Personnel			
Operations Chief	Brent Olson, Scott Schrenk Shawn Borgen (t)	Branch Director	Ryan Butler
Safety Officer	Dan Cassidy, Gerald Vickers Todd Mott(t)	Division/Group Supervisor	Mike King / Graydon Galloway (t) 406-370-2121 / 208-546-9653

**Resources Assigned This Period**

Strike Team/Task Force/ Resource Designator	Req#	Last Shift	Leader	# Persons	Drop Off Point /Time	Pick Up Point / Time

**Work Assignments**

**Task:** Recon the area to the west of the current perimeter and develop a fire suppression strategy focusing on firefighter safety, protecting values and probability of success.

**Purpose:** Protect values at risk from spreading fire by limiting fire spread to the west.

**End State:** Values at risk are not impacted by fire. A plan to protect values at risk is developed and the spread of fire to the west is limited.

**Special Instructions**

**Division/Group Communication Summary**

Function	Channel	Frequency RX	Frequency TX	TONE RX	TONE TX	Function	Channel	Frequency RX	Frequency TX
	Command	3	172.5500	162.1875	151.4		151.4	A/G TAC	13
NIFT T5	7	166.7250	166.7250	151.4	151.4	A/G CMD	14	169.1500	169.1500

Prepared by Anya Moline – RESL	Approved By Robin Jermyn	Date 9/15/2020	Time 1800
-----------------------------------	-----------------------------	-------------------	--------------

DIVISION ASSIGNMENT LIST				Branch		Division/Group				
Incident Name				V		BACKCOUNTRY / LIMA page 1 of 2				
EAST CASTLE ZONE SQF COMPLEX				Operational Period						
				Date: 9/16/2020 to 9/17/2020			Time: 0600-0600			
Operations Personnel										
Operations Chief		Brent Olson, Scott Schrenk Shawn Borgen (t)			Branch Director					
Air Operations		Dennis Morton, John McKee Dan Sepulveda			Division/Group Supervisor			Geoff Farinholt / Richard Baker (t) 406-529-5671		
Safety Officer		Dan Cassidy, Gerald Vickers Todd Mott (t)								
Division/Group Supervisor										
Strike Team/Task Force/ Resource Designator		Req#	Last Shift	Leader		# Persons	Drop Off Point /Time		Pick Up Point / Time	
WFM Horseshoe		O-1	9/20	Candice Kutrosky		12	Troy Meadow 0600		Troy Meadow 2100	
WFM Slate		O-4	9/21	Angel Reyes		10	Troy Meadow 0600		Troy Meadow 2100	
ENG3 SQF E341		E-216	9/22	Merritt Cuttin		5	Troy Meadow 0600		Troy Meadow 2100	
ENG3 Gonzales		E-256	9/19	Steve Reason		3	Troy Meadow 0600		Troy Meadow 2100	
ENG6 Late Summers		E-200	9/28	Josh Crollard		3	Troy Meadow 0600		Troy Meadow 2100	
ENG6 Late Summers		E-201	9/28	Brad Beck		3	Troy Meadow 0600		Troy Meadow 2100	
ENG5 Aberasturi		E-202	9/20	Russell Haynes		3	Troy Meadow 0600		Troy Meadow 2100	
ENG5 Cate Land Fire		E-203	9/16	Vanessa Aldridge		3	Troy Meadow 0600		Troy Meadow 2100	
ENG6 Flame Chaser		E-198	9/20	Edwin Hall		3	Troy Meadow 0600		Troy Meadow 2100	
ENG6 R&R Fire		E-205	9/23	Mike Cox		3	Troy Meadow 0600		Troy Meadow 2100	
ENG6 CNF E473		E-263	9/19	Allen Tennant		5	Troy Meadow 0600		Troy Meadow 2100	
SKD1 McKellar		E-193	9/18	Brett Strong		1	Troy Meadow 0600		Troy Meadow 2100	
SKD1 McKellar		E-214	9/17	Harley Toller		2	Troy Meadow 0600		Troy Meadow 2100	
DOZ2		E-140	9/18	David Krisher		2	Troy Meadow 0600		Troy Meadow 2100	
CHIP		E-189	9/17	Don Kelley		2	Troy Meadow 0600		Troy Meadow 2100	
CHIP		E-191	9/18	Andrew Rackley		2	Troy Meadow 0600		Troy Meadow 2100	
EXCA		E-187	9/18	Kody Williams		1	Troy Meadow 0600		Troy Meadow 2100	
FMOD Under Dog		O-596	9/18	Gary Balmain		2	Troy Meadow 0600		Troy Meadow 2100	
<b>Work Assignments</b>										
<p><b>Task:</b> Maintain readiness and structure protection in: Bonita Meadow, West Meadow, Beach Meadows and Blackrock Work Center. Recon and develop a structure protection plan for Monache. Continue to go direct with crews and equipment on eastern finger of fire north of Beach Meadows. Monitor division X-Ray from the air and utilize air resources as needed to keep green islands from impacting control lines west of H-4. Assist with point protection as needed.</p> <p><b>Purpose:</b> Limit impact to values at risk.</p> <p><b>End State:</b> Values at risk are not impacted by fire. A plan to protect values at risk is developed for the Monache area. The spread of fire to the south and east is limited in divisions L/X</p>										
<b>Special Instructions</b>										
<ul style="list-style-type: none"> <li>• <b>A/G Tac for Branch Five: RX169.200, TX 169.200. This needs to be hand programmed.</b></li> <li>• Personnel to notify DIVS of potentially sensitive cultural materials.</li> <li>• Castle Ambulance 3 staged at Whitsett Base Camp. Castle Ambulance 2 staged at the Blackrock Ranger Station. Castle REMS 2 available to all branch divisions.</li> <li>• Prioritization of all control or containment actions taken during the operational period in this Division will be at the discretion of the DIVS. Actions may have to be taken by the DIVS that are not enumerated in today's IAP. These actions would be a result of a significant change in actual or expected fire behavior over and above that anticipated at the time the IAP was prepared. These actions will be coordinated with and approved by the OSC whenever possible.</li> </ul>										
<b>Division/Group Communication Summary</b>										
<b>Function</b>	Channel	Frequency RX	Frequency TX	TONE RX	TONE TX	<b>Function</b>	Channel	Frequency RX	Frequency TX	
COMMAND	2	170.6875	166.5750	151.4	151.4	A/G TAC	13	172.3500	172.3500	
COMMAND	3	172.5500	162.1875	151.4	151.4	A/G CMD	14	169.1500	169.1500	
NIFC T7	9	168.2500	168.2500	151.4	151.4					
Prepared by Anya Moline – RESL		Approved By Robin Jermyn - PSC				Date 9/15/2020			Time 1800	

DIVISION ASSIGNMENT LIST				Branch		Division/Group				
Incident Name				<b>V</b>		<b>BACKCOUNTRY / LIMA</b> page 2 of 2				
<b>EAST CASTLE ZONE</b> <b>SQF COMPLEX</b>				Operational Period						
				Date: 9/16/2020 to 9/17/2020			Time: 0600-0600			
Operations Personnel										
Operations Chief		Brent Olson, Scott Schrenk Shawn Borgen (t)		Branch Director						
Air Operations		Dennis Morton, John McKee Dan Sepulveda		Division/Group Supervisor			Geoff Farinholt / Richard Baker (t) 406-529-5671			
Safety Officer		Dan Cassidy, Gerald Vickers Todd Mott (t)								
Division/Group Supervisor										
Strike Team/Task Force/ Resource Designator	Req#	Last Shift	Leader		# Perso ns	Drop Off Point /Time		Pick Up Point / Time		
REMS2	E-217	9/19	Ray Storm		6	Troy Meadow 0600		Troy Meadow 2100		
EMPF	O-497	9/23	Tom Kavanaugh		1	Troy Meadow 0600		Troy Meadow 2100		
EMPF	O-495	9/16	Scott Hamilton		1	Troy Meadow 0600		Troy Meadow 2100		
EMPF	O-551	9/23	Matthew Heckman		1	Troy Meadow 0600		Troy Meadow 2100		
EMPF	O-581	9/17	Joshua Terry		1	Troy Meadow 0600		Troy Meadow 2100		
EMTF	O-935	9/28	Tim Higeons		1	Troy Meadow 0600		Troy Meadow 2100		
AMBU	E-52	9/21	Castle 2		2	Troy Meadow 0600		Troy Meadow 2100		
REAF	O-522	9/19	Dan Swanson		1	Troy Meadow 0600		Troy Meadow 2100		
REAF	O-858	9/26	Lauren Archer		1	Troy Meadow 0600		Troy Meadow 2100		
REAF	O-926	9/27	Joshua James		1	Troy Meadow 0600		Troy Meadow 2100		
<b>Work Assignments</b>										
<p><b>Task:</b> Maintain readiness and structure protection in: Bonita Meadow, West Meadow, Beach Meadows and Blackrock Work Center. Recon and develop a structure protection plan for Monache. Continue to go direct with crews and equipment on eastern finger of fire north of Beach Meadows. Monitor division X-Ray from the air and utilize air resources as needed to keep green islands from impacting control lines west of H-4. Assist with point protection as needed.</p> <p><b>Purpose:</b> Limit impact to values at risk.</p> <p><b>End State:</b> Values at risk are not impacted by fire. A plan to protect values at risk is developed for the Monache area. The spread of fire to the south and east is limited in divisions L/X</p>										
<b>Special Instructions</b>										
<ul style="list-style-type: none"> <li>• <b>A/G Tac for Branch Five: RX169.200, TX 169.200. This needs to be hand programmed.</b></li> <li>• Personnel to notify DIVS of potentially sensitive cultural materials.</li> <li>• Castle Ambulance 3 staged at Whitsett Base Camp. Castle Ambulance 2 staged at the Blackrock Ranger Station. Castle REMS 2 available to all branch divisions.</li> <li>• Prioritization of all control or containment actions taken during the operational period in this Division will be at the discretion of the DIVS. Actions may have to be taken by the DIVS that are not enumerated in today's IAP. These actions would be a result of a significant change in actual or expected fire behavior over and above that anticipated at the time the IAP was prepared. These actions will be coordinated with and approved by the OSC whenever possible.</li> </ul>										
<b>Division/Group Communication Summary</b>										
<b>Function</b>	<b>Channel</b>	<b>Frequency RX</b>	<b>Frequency TX</b>	<b>TONE RX</b>	<b>TONE TX</b>	<b>Function</b>	<b>Channel</b>	<b>Frequency RX</b>	<b>Frequency TX</b>	
COMMAND	2	170.6875	166.5750	151.4	151.4	A/G TAC	13	172.3500	172.3500	
COMMAND	3	172.5500	162.1875	151.4	151.4	A/G CMD	14	169.1500	169.1500	
NIFC T7	9	168.2500	168.2500	151.4	151.4					
Prepared by Anya Moline – RESL		Approved By Robin Jermyn - PSC				Date 9/15/2020			Time 1800	

DIVISION ASSIGNMENT LIST				Branch		Division/Group			
Incident Name				STRUCTURE		NELSON			
EAST CASTLE ZONE SQF COMPLEX				Operational Period					
				Date: 9/16/2020 to 9/17/2020		Time: 0600-0600			
Operations Personnel									
Operations Chief		Brent Olson, Scott Schrenk Shawn Borgen (t)		Branch Director		Drew Daily 405-431-9476			
Air Operations		Dennis Morton, John McKee Dan Sepulveda		Division/Group Supervisor		Hunter Seaborn Bell, III 406-670-5633			
Safety Officer		Dan Cassidy, Gerald Vickers Todd Mott (t)							
Resources Assigned This Period									
Strike Team/Task Force/ Resource Designator	Req#	Last Shift	Leader	# Persons	Drop Off Point /Time	Pick Up Point / Time			
HC2 Patrick 2	C-91	9/19	Austin Hergert	20	Whitsett Base 0600	Whitsett Base 2100			
S/T 2806A	E-280	9/18	Kevin Gotro	21	Whitsett Base 0600	Whitsett Base 2100			
S/T 5810A	E-281	9/18	Sal Gutierrez	22	Whitsett Base 0600	Whitsett Base 2100			
S/T 5186B	E-354	9/26	Dwayne Shires	20	Whitsett Base 0600	Whitsett Base 2100			
TFLD		9/20	Bill Castonquay	1	Whitsett Base 0600	Whitsett Base 2100			
ENG3 CO River	E-245	9/20	Randy Hill (t)	4	Whitsett Base 0600	Whitsett Base 2100			
ENG3 Greater Eagle	E-246	9/20	Wade Michels	5	Whitsett Base 0600	Whitsett Base 2100			
ENG6 Carlsbad 62	E-259	9/24	Scott Maxwell	3	Whitsett Base 0600	Whitsett Base 2100			
ENG6 Sandoval Brush 22	E-260	9/24	Harris Toya	3	Whitsett Base 0600	Whitsett Base 2100			
ENG6 Farmington Brush 6	E-261	9/24	Duane Bair	2	Whitsett Base 0600	Whitsett Base 2100			
ENG6 Sac Mtn 218	E-262	9/24	Barbara Stephens	3	Whitsett Base 0600	Whitsett Base 2100			
WTT2 K&B	E-236	9/18	James Davis	1	Whitsett Base 0600	Whitsett Base 2100			
WTT2 Ice WT#152	E-242	9/20	Terry Titus	2	Whitsett Base 0600	Whitsett Base 2100			
WTT2 Sacramento Mtn	E-243	9/20	Ed Wishard	2	Whitsett Base 0600	Whitsett Base 2100			
WTT1 Oes WT139	E-282	9/18	Keith Smith	2	Whitsett Base 0600	Whitsett Base 2100			
WTT1 Oes WT42	E-283	9/18	Robin Serna	2	Whitsett Base 0600	Whitsett Base 2100			
WTT1 WT51	E-285	9/27	John Davies	2	Whitsett Base 0600	Whitsett Base 2100			
SKG2 Alvord Fire	E-180	9/23	Justin Davis	1	Whitsett Base 0600	Whitsett Base 2100			
SOFR (t)	O-511	9/24	Augie Barreda	1	Whitsett Base 0600	Whitsett Base 2100			
EMPF	O-863	9/22	Chris Inman	1	Whitsett Base 0600	Whitsett Base 2100			
EMTF	O-579	9/17	Pat Garcia	1	Whitsett Base 0600	Whitsett Base 2100			
AMBU5	E-337	9/23	Castle 5	2	Whitsett Base 0600	Whitsett Base 2100			
Work Assignments									
<p><b>Task:</b> Support line divisions with fireline perimeter control as instructed by Branch Director or Operations Section Chief. Reinforce structure protection plans with hose lays, static water supply and hazard mitigation as instructed by Group Supervisor for values at risk in Camp Nelson, Cedar Slope, Apline Village, Sequoia Crest and Pierpoint. Assist Ponderosa Structure Group as requested by Operations Section Chief or Branch Director.</p> <p><b>Purpose:</b> Protect values at risk from wildfire impacts with emphasis on supporting fireline perimeter control well in advance of direct threats to communities and improvements.</p> <p><b>End State:</b> Values at risk and communities are able to operate in pre-fire condition accounting for public safety.</p>									
Special Instructions									
<ul style="list-style-type: none"> <li>Personnel to notify DIVS of potentially sensitive cultural materials.</li> <li>Castle Ambulance 3 staged at Whitsett Base Camp. Castle Ambulance 2 staged at Black Rock Ranger station. Medic Team 1 available to all structure divisions.</li> <li>Prioritization of all control or containment actions taken during the operational period in this Division will be at the discretion of the DIVS. Actions may have to be taken by the DIVS that are not enumerated in today's IAP. These actions would be a result of a significant change in actual or expected fire behavior over and above that anticipated at the time the IAP was prepared. These actions will be coordinated with and approved by the OSC whenever possible.</li> </ul>									
Division/Group Communication Summary									
Function	Channel	Frequency RX	Frequency TX	TONE RX	TONE TX	Function	Channel	Frequency RX	Frequency TX
COMMAND	1	170.0000	166.6750	151.4	151.4	A/G TAC	13	172.3500	172.3500
R5 T6	11	168.2375	168.2375	151.4	151.4	A/G CMD	14	169.1500	169.1500
Prepared by Anya Moline – RESL		Approved By Robin Jermyn - PSC				Date 9/15/2020		Time 1800	

DIVISION ASSIGNMENT LIST				Branch		Division/Group				
Incident Name				STRUCTURE		PONDEROSA				
EAST CASTLE ZONE SQF COMPLEX				Operational Period						
				Date: 9/16/2020 to 9/17/2020 Time: 0600 to 0600						
Operations Personnel										
Operations Chief		Brent Olson, Scott Schrenk Shawn Borgen (t)		Branch Director			Drew Daily 405-431-9476			
Air Operations		Dennis Morton, John McKee Dan Sepulveda		Division/Group Supervisor			Hunter Bell / Tom McLeod (t) 559-972-9820 / 208-451-5050			
Safety Officer		Dan Cassidy, Gerald Vickers Todd Mott (t)								
Resources Assigned This Period										
Strike Team/Task Force/ Resource Designator		Req#	Last Shift	Leader		# Persons	Drop Off Point /Time		Pick Up Point / Time	
HC2 Dust Busters		C-80	9/17	Harper Resewehr		20	Whitsett Base 0600		Whitsett Base 2100	
TFLD (t)		O-780	9/20	Bryan Shropshire		1	Whitsett Base 0600		Whitsett Base 2100	
ENG3 Yosemite 31		E-248	9/20	Roy Freitas		5	Whitsett Base 0600		Whitsett Base 2100	
ENG3 J3 Contracting		E-252	9/18	Jacob Vavricka		3	Whitsett Base 0600		Whitsett Base 2100	
ENG3 J3 Contracting		E-253	9/19	Wesley Wallace		3	Whitsett Base 0600		Whitsett Base 2100	
ENG6 R Construction		E-166	9/28	Richard DeRoche		3	Whitsett Base 0600		Whitsett Base 2100	
WTT2 Dust Busters		E-89	9/24	Albert Angulo		1	Whitsett Base 0600		Whitsett Base 2100	
DOZ2		E-5	9/21	Tyler Muth		1	Whitsett Base 0600		Whitsett Base 2100	
SOFR (t)		O-393	9/23	Jacob Brollier		1	Whitsett Base 0600		Whitsett Base 2100	
<b>Work Assignments</b>										
<b>Task:</b> Implement structure defense plans for Ponderosa and adjoining communities. Support Nelson Structure Group as requested by Operations Section Chief or Branch Director.										
<b>Purpose:</b> Protect values at risk from the impacts of wildfire emphasizing perimeter control as a primary plan.										
<b>End State:</b> Values at risk and communities are able to operate in pre-fire condition accounting for public safety.										
<b>Special Instructions</b>										
<ul style="list-style-type: none"> <li>Personnel to notify DIVS of potentially sensitive cultural materials.</li> <li>Castle Ambulance 3 staged at Whitsett Base Camp. Castle Ambulance 2 staged at Blackrock Ranger Station. Medic Team 1 available to all structure divisions.</li> <li>Prioritization of all control or containment actions taken during the operational period in this Division will be at the discretion of the DIVS. Actions may have to be taken by the DIVS that are not enumerated in today's IAP. These actions would be a result of a significant change in actual or expected fire behavior over and above that anticipated at the time the IAP was prepared. These actions will be coordinated with and approved by the OSC whenever possible.</li> </ul>										
<b>Division/Group Communication Summary</b>										
<b>Function</b>	Channel	Frequency RX	Frequency TX	TONE RX	TONE TX	<b>Function</b>	Channel	Frequency RX	Frequency TX	
COMMAND	1	170.0000	166.6750	151.4	151.4	A/G TAC	13	172.3500	172.3500	
COMMAND	2	170.6875	166.5750	151.4	151.4	A/G CMD	14	169.1500	169.1500	
VFIRE 25	12	154.2875	154.2875	156.7	156.7					
Prepared by Anya Moline – RESL		Approved By Robin Jermyn – PSC				Date 9/15/2020			Time 1800	

DIVISION ASSIGNMENT LIST		Branch	Division/Group
Incident Name		NIGHT	MISSION CRITICAL
EAST CASTLE ZONE SQF COMPLEX		Operational Period	
		Date: 9/16/2020 to 9/17/2020	Time: 1800 to 0900

Operations Personnel			
Operations Chief	Andy James (t)	Branch Director	
Safety Officer	Dan Cassidy, Gerald Vickers Todd Mott (t)	Division/Group Supervisor	Jon Norman 406-499-1242

Resources Assigned This Period						
Strike Team/Task Force/ Resource Designator	Req#	Last Shift	Leader	# Persons	Drop Off Point /Time	Pick Up Point / Time
HC1 Black Mesa	C-98	9/28	Frank Auza	21	Camp Nelson 1800	Camp Nelson 0900
TFLD	O-295	9/20	Nick Stepanian	1	Camp Nelson 1800	Camp Nelson 0900
TFLD (t)	O-975	9/29	Mike Wedell	1	Camp Nelson 1800	Camp Nelson 0900f
DOZ2	E-5	9/21	Tyler Muth	4	Camp Nelson 1800	Camp Nelson 0900
DOZ2	E-118	9/26	Kyle Crow	1	Camp Nelson 1800	Camp Nelson 0900
SKG3	E-331	9/27	Jaylund Rammell	2	Camp Nelson 1800	Camp Nelson 0900
EMPF	O-864	9/24	Chris Laponis	1	Camp Nelson 1800	Camp Nelson 0900
SOF2	O-918	9/28	Jeff Pilotto	1	Camp Nelson 1800	Camp Nelson 0900

**Work Assignments**  
**Task:** Support divisions/groups in Branch I as directed by night operations. Implement firing as needed to protect values and secure any spots if safe to do so. Prepare for firing to protect values at risk and for perimeter control.  
**Purpose:** To protect values at risk and provide perimeter control to impacted communities.  
**End State:** Impacts to values at risk have been minimized and critical missions have been successfully implemented safely.

- Special Instructions**
- Personnel to notify DIVS of potentially sensitive cultural materials.
  - Castle Ambulance 3 staged at Whitsett Base Camp. Castle Ambulance 2 staged at Blackrock Ranger Station. Castle REMS1 available to all Branch I divisions.
  - Prioritization of all control or containment actions taken during the operational period in this Division will be at the discretion of the DIVS. Actions may have to be taken by the DIVS that are not enumerated in today's IAP. These actions would be a result of a significant change in actual or expected fire behavior over and above that anticipated at the time the IAP was prepared. These actions will be coordinated with and approved by the OSC whenever possible.

Division/Group Communication Summary									
Function	Channel	Frequency RX	Frequency TX	TONE RX	TONE TX	Function	Channel	Frequency RX	Frequency TX
COMMAND NIFC T1	1	170.0000	166.6750	151.4	151.4	A/G TAC	13	172.3500	172.3500
	5	168.0500	168.0500	151.4	151.4	A/G CMD	14	169.1500	169.1500
Prepared by Anya Moline - RESL		Approved By Robin Jermyn - PSC				Date 9/16/2020		Time 1300	



DIVISION ASSIGNMENT LIST		Branch	Division/Group
Incident Name		NIGHT	PONDEROSA
EAST CASTLE ZONE SQF COMPLEX		Operational Period	
		Date: 9/16/2020 to 9/17/2020     Time: 0600 to 0600	

Operations Personnel			
Operations Chief	Andy James (t)	Branch Director	
Safety Officer	Dan Cassidy, Gerald Vickers Todd Mott (t)	Division/Group Supervisor	Danny Wristen 559-972-9820

Resources Assigned This Period						
Strike Team/Task Force/ Resource Designator	Req#	Last Shift	Leader	# Persons	Drop Off Point /Time	Pick Up Point / Time
HC21 Scorpions 6	C-109	9/28	Gustavo Cisneros	20	Whitsett Base 1800	Whitsett Base 0900
TFLD	O-955	9/28	Ryan Lewis	1	Whitsett Base 1800	Whitsett Base 0900
ENG6 Flat Rock	E-373	9/28	Cody Blair	3	Whitsett Base 1800	Whitsett Base 0900
SKG1 Big Foot	E-353	9/28	Kurt Spencer	1	Whitsett Base 1800	Whitsett Base 0900
SOF1	O-934	9/28	David Provencio	1	Whitsett Base 1800	Whitsett Base 0900

**Work Assignments**

**Task:** Provide perimeter control support and structure defense for the community of Ponderosa when conditions allow. Provide mitigation and reasonable protection for nationally significant natural resources to the extent possible while maintaining firefighter safety. Assist other Night Divisions as directed by Night Operations.

**Purpose:** Minimize fire spread to protect values at risk by supporting perimeter control operations.

**End State:** Values at risk and communities are defended to the extent possible while maintaining firefighter safety as our highest priority.

- Special Instructions**
- Personnel to notify DIVS of potentially sensitive cultural materials.
  - Castle Ambulance 3 staged at Whitsett Base Camp. Castle Ambulance 2 staged at Blackrock Ranger Station. Castle REMS 1 available to all structure divisions.
  - Prioritization of all control or containment actions taken during the operational period in this Division will be at the discretion of the DIVS. Actions may have to be taken by the DIVS that are not enumerated in today's IAP. These actions would be a result of a significant change in actual or expected fire behavior over and above that anticipated at the time the IAP was prepared. These actions will be coordinated with and approved by the OSC whenever possible.

Division/Group Communication Summary									
Function	Channel	Frequency RX	Frequency TX	TONE RX	TONE TX	Function	Channel	Frequency RX	Frequency TX
COMMAND VFIRE25	1	170.0000	166.6750	151.4	151.4	A/G TAC	13	172.3500	172.3500
	12	154.2875	154.2875	156.7	156.7	A/G CMD	14	169.1500	169.1500
Prepared by Anya Moline - RESL		Approved By Robin Jermyn - PSC				Date 9/15/2020		Time 1300	

DIVISION ASSIGNMENT LIST			Branch		Division/Group				
Incident Name			NIGHT		YANKEE / ZULU				
EAST CASTLE ZONE SQF COMPLEX			Operational Period						
			Date: 9/16/2020 to 9/17/2020		Time: 6000 to 0600				
Operations Personnel									
Operations Chief	Andy James (t)		Branch Director						
Safety Officer	Dan Cassidy, Gerald Vickers Todd Mott (t)		Division/Group Supervisor		Bret Davidson / John Lange (t) 858-775-4586 / 979-769-5389				
Resources Assigned This Period									
Strike Team/Task Force/ Resource Designator	Req#	Last Shift	Leader	# Persons	Drop Off Point /Time	Pick Up Point / Time			
ENG6 T6 Cahoon	E-64	9/23	Blaine Fifield	3	Whitsett Base 1800	Whitsett Base 0900			
ENG6 Cahoon	E-65	9/22	Randy Mattson	3	Whitsett Base 1800	Whitsett Base 0900			
ENG6 Tule River Fire	E-72	9/22	Stordy Dick	4	Whitsett Base 1800	Whitsett Base 0900			
ENG6 Peanut Pie	E-78	9/27	Wayde Visser	3	Whitsett Base 1800	Whitsett Base 0900			
ENG6 K&L Brush 11	E-314	9/22	Bryson Kanady	3	Whitsett Base 1800	Whitsett Base 0900			
ENG6 Truck 18	E-315	9/23	Philip Hoag	3	Whitsett Base 1800	Whitsett Base 0900			
ENG6 J3 Contracting	E-316	9/23	Mike Cade	3	Whitsett Base 1800	Whitsett Base 0900			
EMTF	O-580	9/17	Steve Devincinzi	1	Whitsett Base 1800	Whitsett Base 0900			
AMBU	E-46	9/19	Castle1	2	Whitsett Base 1800	Whitsett Base 0900			
Work Assignments									
<p><b>Task:</b> Patrol and monitor from Ponderosa over to Pyles Camp. Support the defense of Ponderosa as requested. Continue operations from day shift as conditions allow. Mop-up as appropriate based on firefighter safety.</p> <p><b>Purpose:</b> Limit fire spread to additional values at risk.</p> <p><b>End State:</b> Fire spread limited to existing fire perimeter.</p>									
Special Instructions									
<ul style="list-style-type: none"> <li>Personnel to notify DIVS of potentially sensitive cultural materials.</li> <li>Castle Ambulance 3 staged at Whitsett Base Camp. Castle Ambulance 2 staged at Blackrock Ranger Station. Castle REMS 1 available to all structure divisions.</li> <li>Prioritization of all control or containment actions taken during the operational period in this Division will be at the discretion of the DIVS. Actions may have to be taken by the DIVS that are not enumerated in today's IAP. These actions would be a result of a significant change in actual or expected fire behavior over and above that anticipated at the time the IAP was prepared. These actions will be coordinated with and approved by the OSC whenever possible.</li> </ul>									
Division/Group Communication Summary									
Function	Channel	Frequency RX	Frequency TX	TONE RX	TONE TX	Function	Channel	Frequency RX	Frequency TX
COMMAND	1	170.0000	166.6750	151.4	151.4	A/G TAC	13	172.3500	172.3500
NIFC T1	5	168.0500	168.0500	151.4	151.4	A/G CMD	14	169.1500	169.1500
Prepared by		Approved By			Date		Time		
Anya Moline - RESL		Robin Jermyn - PSC			9/15/2020		1300		

DIVISION ASSIGNMENT LIST			Branch	Division/Group
Incident Name			NIGHT	STRUCTURE
EAST CASTLE ZONE SQF COMPLEX			Operational Period	
			Date: 9/16/2020 to 9/17/2020 Time: 0600 to 0600	
Operations Personnel				
Operations Chief	Andy James (t)		Branch Director	
Safety Officer	Dan Cassidy, Gerald Vickers Todd Mott (t)		Division/Group Supervisor Derek Steidley 559-471-8611	

**Resources Assigned This Period**

Strike Team/Task Force/ Resource Designator	Req#	Last Shift	Leader	# Persons	Drop Off Point /Time	Pick Up Point / Time
S/T 5809C ENG3	E-241	9/18	Jason Elizondo	16	Camp Nelson 1800	Camp Nelson 0900
S/T 5181F ENG6	E-238	9/18	Kevin Riggi	16	Camp Nelson 1800	Camp Nelson 0900

**Work Assignments**

**Task:** Provide perimeter control support and structure defense for Camp Nelson, Pierpoint, Cedar Slope, Coy Flat and Ponderosa when conditions allow. Provide mitigation and reasonable protection for nationally significant natural resources to the extent possible while maintaining firefighter safety. Assist night divisions as directed by Night Operations.

**Purpose:** Protect values at risk from spreading fire by supporting perimeter control operations.

**End State:** Values at risk and communities are defended to the extent possible while maintaining firefighter safety as our highest priority.

**Special Instructions**

- Personnel to notify DIVS of potentially sensitive cultural materials.
- Castle Ambulance 3 staged at Whitsett Base Camp. Castle Ambulance 2 staged at Blackrock Ranger Station. Castle REMS 1 available to all structure divisions.
- Prioritization of all control or containment actions taken during the operational period in this Division will be at the discretion of the DIVS. Actions may have to be taken by the DIVS that are not enumerated in today's IAP. These actions would be a result of a significant change in actual or expected fire behavior over and above that anticipated at the time the IAP was prepared. These actions will be coordinated with and approved by the OSC whenever possible.

**Division/Group Communication Summary**

Function	Channel	Frequency RX	Frequency TX	TONE RX	TONE TX	Function	Channel	Frequency RX	Frequency TX
COMMAND	See 205					A/G TAC	13	172.3500	172.3500
NIFC T1	5	168.0500	168.0500	151.4	151.4	A/G CMD	14	169.1500	169.1500
Prepared by Anya Moline - RESL	Approved By Robin Jermyn - PSC				Date 9/15/2020			Time 1300	

## ASSIGNMENT LIST (ICS 204 WF)

CONTROLLED UNCLASSIFIED  
INFORMATION//BASIC

<b>1. Incident Name:</b> <b>WEST CASTLE ZONE SQF COMPLEX</b>	<b>2. Operational Period:</b> Date From: 09/16/20    Date To: 09/17/20 Time From: 0700    Time To: 0700	<b>3. Branch</b> <b>XXI</b> <b>Division</b> <b>DD</b>
---	---	--

<b>4. Operations Personnel:</b>		Page 1 of 1    Delta-Delta
Operations Section Chief: <b>E. Schwab</b>	Night Ops: <b>J. McGough</b>	
Branch Director: <b>M. Martinez (12)</b>	Branch Safety:	
Division/Group Supervisor: <b>J. Cazier (12)</b>	Air Attack:	

5. Resources Assigned:								** Resources Below in Bold are 12 Hour **			
Resource Identifier	ALS	LWD	Leader	Personnel	Request #	Hours	Reporting Location				
STL BDU 9353L			M. Breese	9	E-27	0700-0700	ICP				
<b>DOZ PVT E-30115</b>					<b>E-30115</b>	<b>0700-1900</b>	<b>ICP</b>				
DOZ PVT E30150					E-30150	0700-0700	ICP				
<b>DOZ PVT E-30153</b>					<b>E-30153</b>	<b>070-0700</b>	<b>ICP</b>				
FALM O-18			J. Turpin	2	O-18	0700-1900	ICP				

**6. Work Assignments:**

Construct dozer line.

Construct and improve handline.

Structure defense and perimeter control.

Identify and protect natural and cultural resources.

**7. Special Instructions:**

8. Communications							
Name	Ch	Function	Rx Freq	Rx Tone	Tx Freq	Tx Tone	Notes
CDF C1	1	COMMAND	151.3550N	103.5 (T8)	159.3000N	151.4 (T14)	BLUE RIDGE
CDF C11	2	COMMAND	151.1675N	103.5 (T8)	159.3975N	151.4 (T14)	CASE MTN (NORTH)
R5 T5	6	TACTICAL	167.1125N	151.4 (T14)	167.1125N	151.4 (T14)	BRANCH 21
A/G TAC W	13	A/G TAC	169.2000N		169.2000N		
CALCORD	15	MEDICAL	156.0750N	156.7 (T6)	156.0750N	156.7 (T6)	EMERGENCY COORDINATION
GUARD 16	16	EMERGENCY	168.6250N		168.6250N	110.9 (T1)	

<b>9. Prepared by: Name:</b> Josh Anderson	RESL	Signature:
<b>ICS 204</b>	Date/Time: 9/15/2020 2200	Personnel Count: 11

# ASSIGNMENT LIST (ICS 204 WF)

CONTROLLED UNCLASSIFIED  
INFORMATION//BASIC

<b>1. Incident Name:</b> <b>WEST CASTLE ZONE SQF COMPLEX</b>	<b>2. Operational Period:</b> Date From: 09/16/20    Date To: 09/17/20 Time From: 0700    Time To: 0700	<b>3. Branch</b> <b>Division</b>  <b>XXI</b> <b>MM</b>
---	---	--

<b>4. Operations Personnel:</b>		Page 1 of 1      Mike-Mike
Operations Section Chief: <b>E. Schwab</b>		Night Ops: <b>J. McGough</b>
Branch Director: <b>M. Martinez (12)</b>		Branch Safety:
Division/Group Supervisor:		Air Attack:

<b>5. Resources Assigned:</b>		** Resources Below in Bold are 12 Hour **					
Resource Identifier	ALS	LWD	Leader	Personnel	Request #	Hours	Reporting Location
T/F 6080				14		0700-1900	ICP
<b>CRW TLC OAK VALLEY</b>			<b>R. Torres</b>	19	<b>C-30023</b>	<b>0700-1900</b>	<b>ICP</b>
<b>CRW II TEHACHAPI</b>				22	<b>C-30026</b>	<b>0700-1900</b>	<b>ICP</b>
DOZ PVT KURZ						0700-0700	ICP
W/T PVT E-32			R. Ertl	1	E-32	0700-0700	ICP

**6. Work Assignments:**  
 Construct dozer line.  
 Construct and improve handline.  
 Structure defense and perimeter control.  
 Identify and protect natural and cultural resources.

**7. Special Instructions:**

<b>8. Communications</b>							
Name	Ch	Function	Rx Freq	Rx Tone	Tx Freq	Tx Tone	Notes
CDF C1	1	COMMAND	151.3550N	103.5 (T8)	159.3000N	151.4 (T14)	BLUE RIDGE
CDF C11	2	COMMAND	151.1675N	103.5 (T8)	159.3975N	151.4 (T14)	CASE MTN (NORTH)
CDF T25	7	TACTICAL	159.2775N	192.8 (T16)	159.2775N	192.8 (T16)	BRANCH 21
A/G TAC W	13	A/G TAC	169.2000N		169.2000N		
CALCORD	15	MEDICAL	156.0750N	156.7 (T6)	156.0750N	156.7 (T6)	EMERGENCY COORDINATION
GUARD 16	16	EMERGENCY	168.6250N		168.6250N	110.9 (F1)	

<b>9. Prepared by: Name:</b> Josh Anderson	RESL	Signature:
<b>ICS 204</b>	Date/Time: 9/15/2020 2200	Personnel Count: 56

# ASSIGNMENT LIST (ICS 204 WF)

CONTROLLED UNCLASSIFIED  
INFORMATION//BASIC

<b>1. Incident Name:</b> <b>WEST CASTLE ZONE SQF COMPLEX</b>	<b>2. Operational Period:</b> Date From: 09/16/20    Date To: 09/17/20 Time From: 0700    Time To: 0700	<b>3. Branch</b> <b>Division</b>  <b>XXV</b> <b>TT</b>  <b>Page 1 of 1</b> <b>Tango-Tango</b>
---	---	---

<b>4. Operations Personnel:</b>	
Operations Section Chief: <b>E. Schwab</b>	Night Ops: <b>J. McGough</b>
Branch Director: <b>D. Esades (12)</b>	Branch Safety:
Division/Group Supervisor: <b>A. Estabrook (12)</b>	Air Attack:

<b>5. Resources Assigned:</b>		<b>** Resources Below in Bold are 12 Hour **</b>					
Resource Identifier	ALS	LWD	Leader	Personnel	Request #	Hours	Reporting Location
ENG3 TUU 4173				4	E-30170	0700-0700	ICP
ENG3 TUU 4159				4	E-30169	0700-0700	ICP
<b>STG RRU 9316G</b>			<b>C.Wright</b>	33	<b>C-30028</b>	<b>0700-1900</b>	<b>ICP</b>
<b>CRW SLU Fuels 3449</b>			<b>L. Elliott</b>	16	<b>C-30022</b>	<b>0700-1900</b>	<b>ICP</b>
<b>CRW TUU CREW 1</b>			<b>D. Abbott</b>	16	<b>C-30027</b>	<b>0700-1900</b>	<b>ICP</b>
<b>CRW TUU CREW 2</b>			<b>R. High</b>	16	<b>C-30025</b>	<b>0700-1900</b>	<b>ICP</b>
<b>DOZ TUU 4141</b>					<b>C-30185</b>	<b>0700-1900</b>	<b>ICP</b>
<b>DOZ TUU 4143</b>					<b>C-30186</b>	<b>0700-1900</b>	<b>ICP</b>
DOZ PVT Sierra General			C. Hauber	2	E-30116	0700-0700	ICP
<b>W/T TLC 15</b>				2	<b>E-13</b>	<b>0700-1900</b>	<b>ICP</b>
<b>W/T PVT E-33</b>					<b>E-33</b>	<b>0700-1900</b>	<b>ICP</b>

**6. Work Assignments:**  
 Construct dozer line.  
 Construct and improve handline.  
 Structure defense and perimeter control  
 Identify and protect natural and cultural resources.

**7. Special Instructions:**

<b>8. Communications</b>							
Name	Ch	Function	Rx Freq	Rx Tone	Tx Freq	Tx Tone	Notes
CDF C1	1	COMMAND	151.3550N	103.5 (T8)	159.3000N	151.4 (T14)	BLUE RIDGE
CDF C11	2	COMMAND	151.1675N	103.5 (T8)	159.3975N	151.4 (T14)	CASE MTN (NORTH)
CDF T28	9	TACTICAL	151.1825N	192.8 (T16)	151.1825N	192.8 (T16)	BRANCH 25
A/G TAC W	13	A/G TAC	169.2000N		169.2000N		
CALCORD	15	MEDICAL	156.0750N	156.7 (T6)	156.0750N	156.7 (T6)	EMERGENCY COORDINATION
GUARD 16	16	EMERGENCY	168.6250N		168.6250N	110.9 (T1)	

<b>9. Prepared by: Name:</b> Josh Anderson	RESL	Signature:
<b>ICS 204</b>	Date/Time: 9/15/2020 2200	Personnel Count: 93

# ASSIGNMENT LIST (ICS 204 WF)

CONTROLLED UNCLASSIFIED  
INFORMATION//BASIC

<b>1. Incident Name:</b>	<b>2. Operational Period:</b>	<b>3. Branch</b>	<b>Division</b>
<b>WEST CASTLE ZONE SQF COMPLEX</b>	Date From: 09/16/20      Date To: 09/17/20 Time From: 0700              Time To: 0700	<b>XXV</b>	<b>PP</b>
<b>4. Operations Personnel:</b>		Page 1 of 1      Papa-Papa	

Operations Section Chief: <b>E. Schwab</b>	Night Ops: <b>J. McGough</b>
Branch Director: <b>D. Esades (12)</b>	Branch Safety:
Division/Group Supervisor:	Air Attack:

5. Resources Assigned:		** Resources Below in Bold are 12 Hour **					
Resource Identifier	ALS	LWD	Leader	Personnel	Request #	Hours	Reporting Location
ENG3 TUU 4184				4	E-19	0700-0700	ICP
ENG3 TUU 4190				4	E-20	0700-0700	ICP
<b>STL RRU 9319L</b>			<b>A. Bennett</b>		<b>E-26</b>	<b>0700-1900</b>	<b>ICP</b>
W/T PVT E-30			P. Arch	2	E-30	0700-0700	ICP
W/T PVT E-31			B. Beomanes	2	E-31	0700-0700	ICP

**6. Work Assignments:**

- Construct dozer line.
- Construct and improve handline.
- Structure defense and perimeter control.
- Identify and protect natural and cultural resources.

**7. Special Instructions:**

**8. Communications**

Name	Ch	Function	Rx Freq	Rx Tone	Tx Freq	Tx Tone	Notes
CDF C1	1	COMMAND	151.3550N	103.5 (T8)	159.3000N	151.4 (T14)	BLUE RIDGE
CDF C11	2	COMMAND	151.1675N	103.5 (T8)	159.3975N	151.4 (T14)	CASE MTN (NORTH)
CDF T26	8	TACTICAL	159.2925N	192.8 (T16)	159.2925N	192.8 (T16)	BRANCH 25
A/G TAC W	13	A/G TAC	169.2000N		169.2000N		
CALCORD	15	MEDICAL	156.0750N	156.7 (T6)	156.0750N	156.7 (T6)	EMERGENCY COORDINATION
GUARD 16	16	EMERGENCY	168.6250N		168.6250N	110.9 (T1)	

**9. Prepared by: Name:** Josh Anderson                                  RESL

Signature:

<b>ICS 204</b>	Date/Time: 9/15/2020    2200	Personnel Count: 12
----------------	------------------------------	---------------------





10. TASK/ MISSION/ ASSIGNMENT (Type/ function includes: Air Tactical, Retardant, Recon, Personnel Transport, Bucket Operations, SAR, etc.)					
TYPE/FUNCTION	PRIORITY	NAME OF PERSONNEL OR CARGO (If applicable) or instructions for tactical aircraft	MISSION START	FLY FROM	FLY TO
ATGS		Provide continuous coverage over the fire as smoke and weather permits.	0900	PVT	Fire
Initial Attack		Initial Attack assistance as requested.	TBD	PVT/Peppermint	IA
Medevac		<b>**See Medical Plan in IAP – Review during Division Breakouts**</b>	TBD		Fire
Water Drops		As needed and approved by OPS, order through ATGS/HLCO	0900	PVT	Fire
Recon		Fire reconnaissance as requested.	0900	PVT	Fire
PSD		As needed and approved by OPS	0900	PVT	Fire
OTHER		(Back Haul, Re-Supply, Crew Movement) Place all orders through communications	0900	Peppermint	Fire

Helibase, Dip Sites, Pick Up Sites, etc.			Helibase, Dip Sites, Pick Up Sites, etc.		
Porterville HB	36 01.427' N 118 4.112' W	500'	Lookout IP, Enter 10000'	36 3.89' N, 118 27.51' W	
Peppermint HB	36 4.355' N 118 32.500' W	7500'	Saddle Check	36 10.88' N 118 28.59' W	
H-3 Black Rock T2	36 5.609' N, 118 15.666' W	8100'	Ridge Check	36 8.55' N 118 26.72' W	
Ranch Helispot	36 09.053' N 118 48.063' W	1200'	Needle Check	36 5.89' N 118 27.59' W	
			Walter Check	36 15.43' N 118 36.11' W	
H-1 T2	36 9.852' N, 118 26.985' W	6600'			
H-2 T2	36 5.838' N, 118 26.806' W	6000'			
H-12 Camp Nelson	36 08.368' N 118 36.917' W	4800'			
H-30	36 20.809' N 118 24.512 W	6500'			
(MRB) Camp Nelson	36 08.402' N, 118 36.854' W	4800'			
Freeman "NR"	36 6.875' N, 118 27.551' W	5100'			
Beach Dip (X, U, N Only)	36 6.931' N, 118 17.824' W	7700'	C31	36 18.077' N 118 27.340' W 10800'	
Quaking Aspen Dip T2, 3 ONLY!	36 07.285' N, 118 32.815' W	7000'	C4	36 10.909' N 118 35.882' W 9100'	
			C11	36 0.630' N 118 23.448' W 9900'	

Visibility Limitations VFR Flight Helicopters Day 1/2 statute mile Clear of clouds

Flights above ground level	Flight Permitted in Winds Less than / Maximum Gust Spread		
	Type 1 Helicopters	Type 2 Helicopters	Type 3 Helicopters
More than 500' AGL	<50kts / Gusts: N/A	<50kts / Gusts: N/A	<50kts / Gusts: N/A
Less than 500' AGL	<40kts / Max Gust Spread: 15kts	<40kts / Max Gust Spread: 15kts	<30kts / Max Gust Spread: 15kts

"I won't be wronged, I won't be insulted, and I won't be laid a hand on. I don't do these things to other people and I require the same from them."

-----John Wayne

INCIDENT RADIO COMMUNICATIONS PLAN			Incident Name EAST CASTLE ZONE SQF COMPLEX			Date/Time Prepared 9/15/2020			Operational Period Date/Time 9/16/20 0600 - 9/17/20 0600		
Ch #	Function	Channel Name/Trunked Radio System Talkgroup	Assignment	RX Freq	N or W	RX Tone/NAC	TX Freq	N or W	Tx Tone/NAC	Mode A, D or M	Remarks
1	CMD REPEATER	NIFC C4	DIV A/B/Y/Z	170.0000		151.4	166.6750		151.4	A	JORDON PEAK (TONE 14)
2	CMD REPEATER	NIFC C11	DIV BC L	170.6875		151.4	166.5750		151.4	A	SHERMAN PEAK (TONE 14)
3	CMD REPEATER	NIFC C31	DIV BC L / W	172.5500		151.4	162.1875		151.4	A	COYOTE PEAK (TONE 14)
4	FOREST REPEATER	SQF CH2	ALL/BACKUP	169.9000			165.7000		103.5	A	SQF FOREST RPTR DISPATCH
5	TACTICAL CHNL	NIFC T1	DIV A / NIGHT	168.0500		151.4	168.0500		151.4	A	SQF TACTICAL (TONE 14)
6	TACTICAL CHNL	NIFC T3	DIV B	168.6000		151.4	168.6000		151.4	A	SQF TACTICAL (TONE 14)
7	TACTICAL CHNL	NIFC T5	DIV W	166.7250		151.4	166.7250		151.4	A	SQF TACTICAL (TONE 14)
8	TACTICAL CHNL	NIFC T6	DIV Y / Z	166.7750		151.4	166.7750		151.4	A	SQF TACTICAL (TONE 14)
9	TACTICAL CHNL	NIFC T7	BC L	168.2500		151.4	168.2500		151.4	A	SQF TACTICAL (TONE 14)
10	TACTICAL CHNL	R5 T5	CAL FIRE TAC	167.1125		151.4	167.1125		151.4	A	MUTUAL TAC FREQ CAL FIRE
11	TACTICAL CHNL	R5 T6	NELSON	168.2375		151.4	168.2375		151.4	A	STRUCTURE TAC (TONE 14)
12	TACTICAL CHNL	VFIRE 25	POND / NIGHT	154.2875		156.7	154.2875		156.7	A	STRUCTURE TAC (TONE 6)
13	AIR TO GROUND	A/G TAC	A/G TAC	172.3500			172.3500			A	A/G TAC
14	AIR TO GROUND	A/G CMD	A/G CMD	169.1500			169.1500			A	A/G CMD OVERHEAD ONLY
15	TACTICAL CHNL	CALCORD	MEDEVAC	156.0750		156.7	156.0750		156.7	A	CALCORD MEDEVAC (T 6)
16	AIR GUARD	GRD 15	EMCY ONLY	168.6250			168.6250		110.9	A	AIR GUARD
Prepared by (Communications Unit) COMM UNIT 949.330.9979 / COM1 DUSTIN SENE 406.581.9816						Incident Location SEQUOIA NF County _____ State CA Latitude _____ N Longitude 3-7-77 W					

The convention calls for frequency lists to show four digits after the decimal place, followed by either an "N" or a "W", depending on whether the frequency is narrow or wide band. Mode refers to either "A" or "D" indicating analog or digital (e.g. Project 25) or "M" indicating mixed mode. All channels are shown as if programmed in a control station, mobile or portable radio. Repeater and base stations must be programmed with the Rx and Tx reversed.

# MEDICAL PLAN (ICS 206 WF)

Controlled Unclassified Information//Basic

<b>1. Incident/Project Name</b>		<b>2. Operational Period</b>					
<b>East Castle Zone SQF Complex</b>		Date/Time 09/16/20 0600hrs-09/1700 0600hrs					
<b>3. Ambulance Services</b>							
Name	Complete Address	Phone & EMS Frequency	Advanced Life Support (ALS) Yes      No				
Imperial Ambulance (west side)	28551 Hwy 190, Porterville, CA	559-687-3309	<input checked="" type="checkbox"/>	<input type="checkbox"/>			
Hall Ambulance (east side)	1001 21st St, Bakersfield	661-327-4111	<input checked="" type="checkbox"/>	<input type="checkbox"/>			
Liberty Ambulance (Castle Ambulance 4)	ICP (Kern Valley High School)	Command frequency	<input checked="" type="checkbox"/>	<input type="checkbox"/>			
<b>4. Air Ambulance Services</b>							
Name	Phone	Type of Aircraft & Capability					
<b>**Kern County FD H407 Visalia</b>	657-464-7830	Incident Primary Air Rescue, Bell 205, ALS, 24/7 Hoist					
<b>Kern County FD H408</b>	657-305-5433	Air Rescue, Bell 205, ALS, 24/7 Hoist					
<b>Skylife</b>	800-305-5433	ALS, No Hoist, requires 100x100 LZ					
<b>CHP H40 (Fresno)</b>	559-262-0400	Air ambulance, ALS 24/7, DAY HOIST ONLY, NIGHT STAFFING ON CALL AFTER 1800 HRS					
<b>US COAST GUARD</b>	REGIONAL COMMAND CENTER 510-437-3701	AIR RESCUE, HOIST 24/7, NO IN-FLIGHT MEDICAL					
<b>5. Hospitals</b>							
Name Complete Address	GPS Datum – WGS 84 Coordinate Standard Degrees Decimal Minutes DD° MM.MMM' N - Lat DD° MM.MMM' W - Long	Travel Time Air      Gnd		Phone	Helipad Yes   No	Level of Care Facility	
Kern Valley Hospital 6412 Laurel Ave Lake Isabella, CA	Lat: 35 38.07'N	30 Min	2- 3Hr	760-379-2681	<input checked="" type="checkbox"/>	<input type="checkbox"/>	Emergency Room
	Long: 118 24.35'W						
	VHF:						
Sierra View Med Ctr 465 W Putnam Ave Porterville, CA	Lat:	30 Min	2-4.5 hrs	559-784-1110	<input type="checkbox"/>	<input checked="" type="checkbox"/>	Emergency Room
	Long:						
	VHF:						
Kaweah Delta Health 400 W. Mineral King Ave. Visalia, CA 93291	Lat: 36 19.65'N	30 Min	2.5-5 Hr	559-624-2000	<input checked="" type="checkbox"/>	<input type="checkbox"/>	Level 2 Trauma
	Long: 119 17.67'W						
	VHF: 468.0375 PL141.3 DTMF 3211 12K lb pad limit						
Kern Medical Center 1700 MT Vernon Ave.Bakersfield, CA 93306	Lat: 35 22.95'N	45 min	2.5- 3.75 hr	661-326-2000	<input checked="" type="checkbox"/>	<input type="checkbox"/>	Level 2 Trauma
	Long: 118 58.18'W						
	VHF: 463.100 12K lb pad limit						
Community Regional Medical Center 2823 Fresno St.Fresno, CA 93721	Lat: 36 44.568'N	1 hr	3- 5.25 hr	559-459-6000 ER 559-459-4220	<input checked="" type="checkbox"/>	<input type="checkbox"/>	Level 1 Trauma/ Burn Center
	Long: 119 47.094'W						
	VHF: 123.05 key 5times for lights 22K lb pad limit						
<b>6. Division   Branch   Group</b>		<b>Area Location Capability</b>					
<h1 style="font-size: 2em;">Div A</h1>		EMS Responders & Capability:		Brain Boulware, EMPF; Larry Hoqueisson, EMPF			
		Equipment Available on Scene:		ALS, extraction, utv			
		Medical Emergency Channel:		Command			
		ETA for Ambulance to Scene:					
		Air:		30 mins			
		Ground:		2 hrs			
		Approved Helispot:		H20			
		Lat:		36 10.960'N			
Long:		118 29.259'W					

# MEDICAL PLAN (ICS 206 WF)

Controlled Unclassified Information//Basic

1. Incident/Project Name	2. Operational Period	
<h2>Div B</h2>	EMS Responders & Capability:	Medic team 1 (3 persons)
	Equipment Available on Scene:	ALS, BLS
	Medical Emergency Channel:	Command
	ETA for Ambulance to Scene:	
	Air:	30 min
	Ground:	2 hrs
	Approved Helispot:	H 20
	Lat:	36 10.960°N
	Long:	118 29.259°W
<h2>Div Y/Z</h2>	EMS Responders & Capability:	Silas Fischer EMPF; Tom Zamora, EMPF; Ambulance 3
	Equipment Available on Scene:	ALS; 4x4 ALS ambulance
	Medical Emergency Channel:	Command
	ETA for Ambulance to Scene:	
	Air:	30 min
	Ground:	2 hrs
	Approved Helispot:	H1
	Lat:	36 9.852°N
	Long:	118 26.985°W
<h2>Backcountry Lima</h2>	EMS Responders & Capability:	Scott Hamilton, EMPF; Joshua Terry, EMPF; Castle Ambulance 2; Tommy Kavanaugh, EMPF; Matthew Heckman, EMPF; Tim Higeons, EMPF; REMS 2 (4 personnel)
	Equipment Available on Scene:	ALS; Extraction; ALS Ambulance
	Medical Emergency Channel:	Command
	ETA for Ambulance to Scene:	
	Air:	35 mins
	Ground:	3 hrs
	Approved Helispot:	H 3
	Lat:	36 5.609°N
	Long:	118 15.666°W
<h2>Structure Nelson</h2>	EMS Responders & Capability:	Chris Inman, EMPF; Patrick Garcia, EMTF; Castle Ambulance 5
	Equipment Available on Scene:	ALS; ALS ambulance
	Medical Emergency Channel:	Command
	ETA for Ambulance to Scene:	
	Air:	35 mins
	Ground:	3 hrs
	Approved Helispot:	Peppermint Helibase
	Lat:	36 4.355°N
	Long:	118 32.500°W
<h2>Night Div A/B</h2>	EMS Responders & Capability:	Chris Laponis
	Equipment Available on Scene:	ALS
	Medical Emergency Channel:	Command
	ETA for Ambulance to Scene:	
	Air:	30 mins
	Ground:	2 hrs
	Approved Helispot:	H20
	Lat:	36 10.960°N
	Long:	118 29.259°W
<h2>Night Div Y/Z</h2>	EMS Responders & Capability:	Steve Devincinzi, EMTF, Castle ambo 2
	Equipment Available on Scene:	BLS; ALS ambulance
	Medical Emergency Channel:	Command
	ETA for Ambulance to Scene:	
	Air:	30 min
	Ground:	2 hrs
	Approved Helispot:	H1
	Lat:	36 9.852°N
	Long:	118 26.985°W
Emily Ellick-Flettire-405-593-3369	09/15/2020	Dan Cassidy SOF1 406.250.4599 09/15/2020

**MEDICAL PLAN (ICS 206 WF)**  
**Controlled Unclassified Information//Basic**  
**ASSIGNMENT-SPECIFIC MEDICAL EMERGENCY ACTION PLAN**

**Pre-Planning for today's assignment – See Page 2 IRPG**

What are the likely hazards that could cause injuries? What kind of severe injuries?		
Who is the likely in-charge DIVS or overhead for an emergency in your assigned area today? (i.e. "Division Zulu")		
Who are the Medical personnel assigned to your part of the incident? What are their capabilities?		
Other Emergency Responders: fire dept, crash rescue, ambulance?		
Communications: Command channel, Air to Ground, Medical helicopters, local rescue/medical?		
Transportation methods available	Ground vehicle, drop point, coordinates, travel route?	
	Aircraft I.D, helispot names, coordinates? Hoist capable, internal transport	
	Other available methods - contingency	
Most likely workforce for evacuation		

**Response checklist**

**Who takes charge?**

- DIVS or designated Overhead manages the overall scene and evacuation process.
- Medical personnel and emergency responders manage patients and conduct rescues.
- OPS and IC make command decisions so the emergency can be given full attention and management. They continue to manage ongoing incident operations.

**Response sequence:**

- First, secure the scene and protect responders and patients from further injury.
- Clear the Command channel for "Emergency Traffic only" if this is a critical emergency. If not, inform Communications of non-critical-emergency status and use normal communications.
- Contact closest Medical personnel and DIVS or designated Overhead for response.
- Notify Communications to initiate Accident Action Plan response.

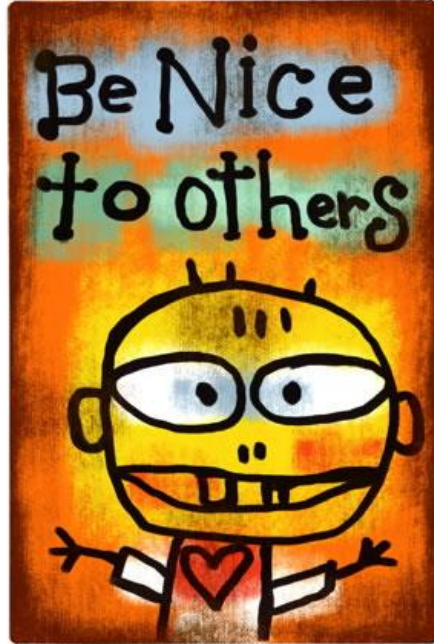
**Information for Communications: (See Medical Incident Report, page 108, IRPG)**

- Type and extent of injuries?
- Airway or breathing problems? Serious bleeding?
- Is an EMT present or needed? Are Paramedics (Advanced Life Support) needed?
- Specific location of patients (Lat/Long, access route, DP#, helicopter Landing Zone)?
- What type of transport is needed? Helicopter medevac, hoist, ambulance or ground transport?
- Name of contact person in charge of the scene.
- Do not use names of patients at any time.
- **Medical Emergency Responders confer with Medical Unit Leader and DIVS or designated Overhead to determine if this is a critical emergency and what type of transport is needed.**



# HUMAN RESOURCE MESSAGE

*There is zero tolerance for drugs or alcohol on this fire incident.*



Being nice to someone might not mean that much to you, but it can mean the world to them.

*No matter what, always make the choice to be nice!*

\*\*\*\*\*

Debby Hassel, HRSP (406) 274-7985

[hrspfire@gmail.com](mailto:hrspfire@gmail.com)

## COVID-19 Reminders

***Make prevention part of your routine!***

### WILDLAND FIRE COVID-19 SCREENING TOOL

*Today or in the past 24hrs, have you had any of the following symptoms?*

#### Symptoms:

Cough?

Shortness of breath or difficulty breathing?

Fever? Chills?

Muscle pain, outside that expected for your level of exertion?

Sore throat?

New loss of taste or smell?

Excessive fatigue?

Headache?

Congestion or runny nose?

Nausea or vomiting

Diarrhea?

*\*Take temperature with no-touch thermometer, if available\**

### What to do if you are experiencing COVID-19 symptoms?

- Put on a mask if not already wearing one.
- Notify your supervisor and self-isolate from others immediately.
- Notify Line Medic or Medical Unit to evaluate symptoms.
- Document contacts you had the two days before your symptoms began.
- Wait for further instructions from the Medical Unit and COVID Team.

### How do I know if I am a 'close contact' of a person who is presumptive positive or has tested positive for COVID-19?

For COVID-19, a **close contact** is anyone who was within 6 feet of an infected person for at least 15 minutes. An infected person can spread COVID-19 starting from 48 hours (or 2 days) before the person had any symptoms or tested positive for COVID-19.

\*Approximately 40-50% of people with COVID-19 will not show any symptoms. It's important to utilize preventative strategies (masks, spacing, hand hygiene) prior to someone displaying symptoms.

### Do your part to minimize the spread of COVID-19 and reduce your risk of exposure.

- Maintain 6 ft or greater spacing between you and others.
- Wear a mask, especially when unable to maintain social distancing, in public settings, including briefings.
- Frequently wash your hands with soap and water or a hand sanitizer that is at least 60% alcohol.
- Wash/sanitize frequently touched surfaces.

**The best way to prevent illness and continue to fight fire is to avoid being exposed to this virus.**

**COVID questions or concerns?**

**Call the COVID Hotline**

**949-330-9973**

# FINANCE MESSAGE

## OPTIONS FOR SUBMITTING TIME:

1. **Fillable PDF CTR/Shift Ticket:** QR code to the fillable forms are included below. If you do not have QR capabilities finance can e-mail you the forms directly.



2. **Hard Copy CTR/Shift Ticket:** Fill out a hard copy CTR, snap a picture and email/text that into finance. If you send in a picture, please make sure it is legible and includes the supervisor's signature at the bottom! Please make sure to include your phone number in the **Remarks** in case we have questions.
3. OR you may turn in your actual hard copy as usual at Whitsett Spike Camp & Troy Meadow.
  - Please try to submit time at least every other day
  - H-Pay justifications are still required on your CTRs – “H = Hazard Pay” is not sufficient

**\*\*CONTRACTED EQUIPMENT PLEASE CONTACT FINANCE IF YOU WANT TO START THE PROCESS OF AN INTERIM PAYMENT\*\***

**2020.castle.finance@firenet.gov**

Finance Main Line: 949-591-4123

TIP:

***\*\*In order to use fillable pdf forms, you must have some version of Adobe Acrobat downloaded on your device. If you have any issues opening the documents call finance for assistance. \*\****

### **\*\*\*REMINDER\*\*\***

- BE SURE to call Finance **1 day** prior to your scheduled DMOB to ensure time is complete at **949-591-4123**
- Only 1 representative per resource should go to Finance at ICP to officially close out time.



# DEMOBILIZATION IS NOW REMOTE!!

## ***Demobilization Steps:***

1. ALL accountable property checked-out from the incident must be returned (i.e. communications, supply). Items may be returned at Whitsett Base Camp or ICP.
2. Submit all finance documentation (time must be projected for travel home).
  - a. Abide by scheduled DMOB time or call Finance for an unscheduled DMOB.
  - b. Government agency resources that would like to close out their time 100% remotely should call **949-591-4123** when they are close to their DMOB date and make necessary arrangements to complete the process.
3. Scan the QR code on the front of the IAP to complete the DMOB process and start your travel home. **DO NOT LEAVE the incident until you have confirmed with Demobilization Unit Leader at 951-235-1568. If you have questions, please call!**

## EXTENSIONS & RR

- Extensions or RR's **MUST be requested by your incident supervisor** and approved by your home unit supervisor prior to being processed.
- Extensions forms can be obtained from DMOB or the plans representative onsite at Camp Whitsett.

## ***Are You a TRAINEE?***

1. Scan these codes to access the fillable *trainee* information forms. Send photo of qualification cards and task book cover to: [matthew.boss@usda.gov](mailto:matthew.boss@usda.gov)



Registration



Check-out



Exit Interview

2. Call Incident Training Specialist 951-314-1427 (Matt) with questions from 0600 – 2100 daily.



# **FINANCE**

## **S# PROCESS**

### **FEDERAL RESOURCES ONLY**

- **PROPERTY LOSS-REPAIR-REPLACE OF NON-NATIONAL FIRE EQUIPMENT SYSTEM (NFES) OR NON-STANDARD CACHE ITEMS**

- **CAN IT BE REPLACED AT SUPPLY?**

1. **General message is needed (ICS 213) with contact information NAME/PHONE #/EMAIL/RESOURCE ORDER # send to Supply at [2020.castle.ordering@firenet.gov](mailto:2020.castle.ordering@firenet.gov)**

- **IF YOU NEED AN S# FOR REPLACEMENT BECAUSE SUPPLY DOES NOT HAVE IT PLEASE DO THE FOLLOWING**

2. **General message is needed (ICS 213) with contact information NAME/PHONE #/EMAIL/RESOURCE ORDER #. A description of property damage or loss needs to be documented and pictures of damaged items. Please send to finance at [2020.castle.finance@firenet.gov](mailto:2020.castle.finance@firenet.gov)**

3. **We have Comp/Claims on site! Please reach out to us with any questions at 406-363-8956 or 406-366-3724.**

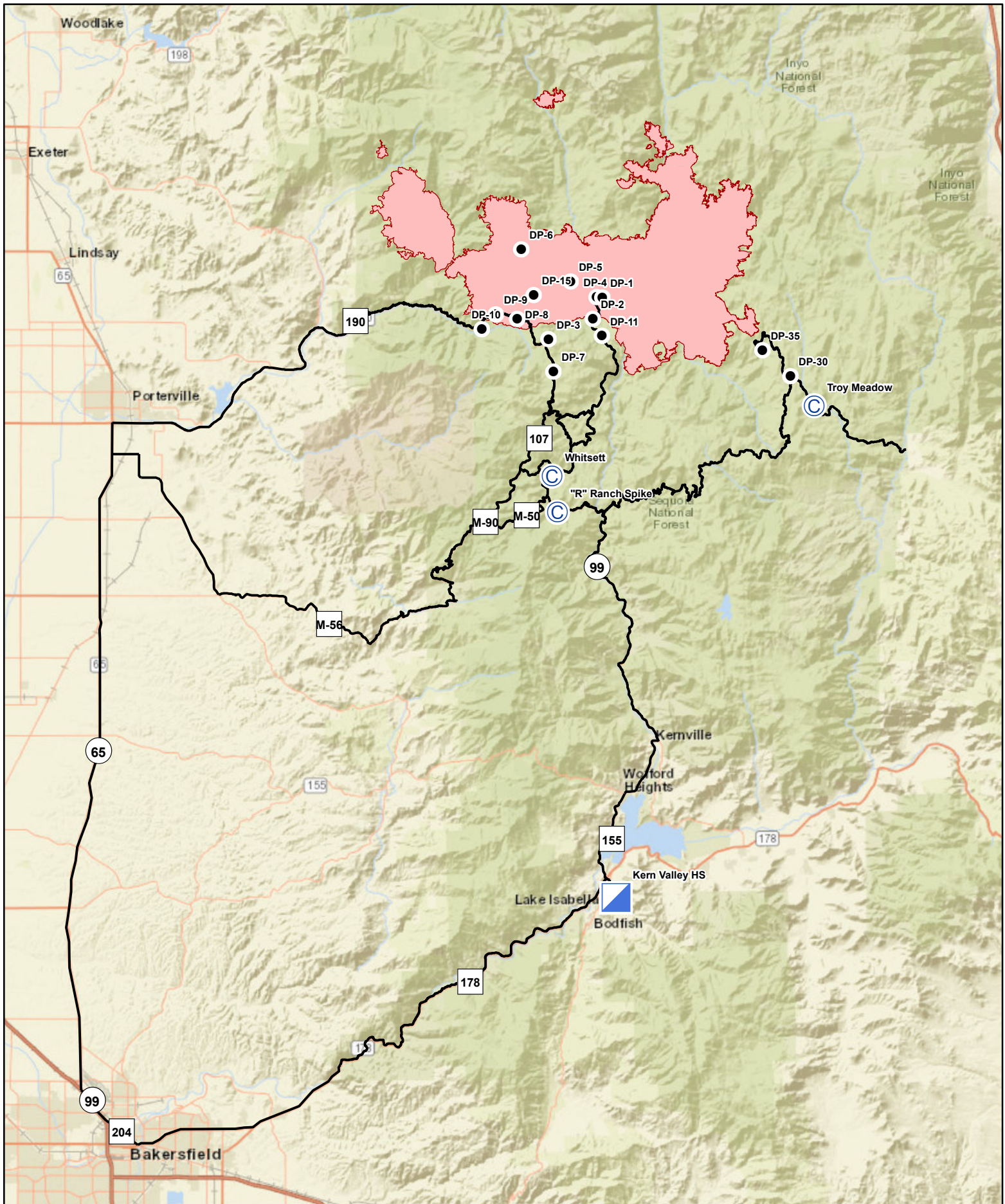




Northern Rockies Team 1  
EAST CASTLE ZONE SQF COMPLEX

PHONE LIST

POSITION	NAME	MOBILE PHONE
<b>SAFETY</b>		
Safety Officer 1	Cassidy, Dan	406-250-4599
<b>PUBLIC INFORMATION</b>		
Public Information Officer 1	Smith, Jeannette M	406-544-0131
Public Information Officer 1 (t)	Bateson, Anna	406-360-5638
Public Information Officer 1 (t)	Vosburgh, Mark	406-370-8149
<b>LIAISON</b>		
Liaison Officer	Taylor, Robert L	406-544-4679
Liaison Officer	Jaguith, Kay	406-531-9123
<b>OPERATIONS</b>		
Operations Section Chief 1	Olson, Brent H	406-249-4994
Line Ops	Schrenk, Scott	406-250-0354
Air Ops	Morton, Dennis	406-660-2318
<b>PLANNING</b>		
Planning Section Chief	Jermyn, Robin	406-360-5936
Planning Section Chief (t)	Carlin, Rob	406-249-1989
Deputy Planning Chief	Gump, Robert	850-688-7623
Status Check In	Heinsch, Faith Ann	858-204-7419
DEMOB	Murphy, Tanya	951-235-1568
Training Specialist	Boss, Matt	951-314-1427
Sequoia NF READ	Courter, Josh	559-920-7023
Inyo NF READ	Barnett, Adam	760-920-8104
<b>LOGISTICS</b>		
Logistics Section Chief 1	Showers, Charles	406-531-3691
Ordering Manager	Lind, Rita	406-291-3012
Supply Unit Leader	King, Josh	406-855-0984
Communications Unit Leader	Sene, Dustin	406-581-9816
COVID Hotline		949-330-9973
<b>FINANCE</b>		
Finance Section Chief 1	Schrenk, Amy	406-830-5214
General Finance Information		949-591-4123



# Transportation Sequoia Complex

CA-SQF\_002622



# MEDICAL PLAN (ICS 206 WF)

Controlled Unclassified Information//Basic

## Medical Incident Report

**FOR A NON-EMERGENCY INCIDENT, WORK THROUGH CHAIN OF COMMAND TO REPORT AND TRANSPORT INJURED PERSONNEL AS NECESSARY.**

**FOR A MEDICAL EMERGENCY: IDENTIFY ON SCENE INCIDENT COMMANDER BY NAME AND POSITION AND ANNOUNCE "MEDICAL EMERGENCY" TO INITIATE RESPONSE FROM IMT COMMUNICATIONS/DISPATCH.**

**Use the following items to communicate situation to communications/dispatch.**

**1. CONTACT COMMUNICATIONS / DISPATCH** (Verify correct frequency prior to starting report)

*Ex: "Communications, Div. Alpha. Stand-by for Emergency Traffic."*

**2. INCIDENT STATUS:** Provide incident summary (including number of patients) and command structure.

*Ex: "Communications, I have a Red priority patient, unconscious, struck by a falling tree. Requesting air ambulance to Forest Road 1 at (Lat./Long.) This will be the Trout Meadow Medical, IC is TFLD Jones. EMT Smith is providing medical care."*

Severity of Emergency / Transport Priority	<input type="checkbox"/> <b>RED / PRIORITY 1 Life or limb threatening injury or illness. Evacuation need is IMMEDIATE</b> <i>Ex: Unconscious, difficulty breathing, bleeding severely, 2° – 3° burns more than 4 palm sizes, heat stroke, disoriented.</i> <input type="checkbox"/> <b>YELLOW / PRIORITY 2 Serious Injury or illness. Evacuation may be DELAYED if necessary.</b> <i>Ex: Significant trauma, unable to walk, 2° – 3° burns not more than 1-3 palm sizes.</i> <input type="checkbox"/> <b>GREEN / PRIORITY 3 Minor Injury or illness. Non-Emergency transport</b> <i>Ex: Sprains, strains, minor heat-related illness.</i>	
Nature of Injury or Illness & Mechanism of Injury		<i>Brief Summary of Injury or Illness (Ex: Unconscious, Struck by Falling Tree)</i>
Transport Request		<i>Air Ambulance / Short Haul/Hoist Ground Ambulance / Other</i>
Patient Location		<i>Descriptive Location &amp; Lat. / Long. (WGS84)</i>
Incident Name		<i>Geographic Name + "Medical" (Ex: Trout Meadow Medical)</i>
On-Scene Incident Commander		<i>Name of on-scene IC of Incident within an Incident (Ex: TFLD Jones)</i>
Patient Care		<i>Name of Care Provider (Ex: EMT Smith)</i>

**3. INITIAL PATIENT ASSESSMENT:** Complete this section for each patient as applicable (start with the most severe patient)

Patient Assessment: See IRPG PAGE 106

Treatment:

**4. TRANSPORT PLAN:**

Evacuation Location (if different): (Descriptive Location (drop point, intersection, etc.) or Lat. / Long.) Patient's ETA to Evacuation Location:

Helispot / Extraction Site Size and Hazards:

**5. ADDITIONAL RESOURCES / EQUIPMENT NEEDS:**

*Example: Paramedic/EMT, Crews, Immobilization Devices, AED, Oxygen, Trauma Bag, IV/Fluid(s), Splints, Rope rescue, Wheeled litter, HAZMAT, Extrication*

**6. COMMUNICATIONS: Identify State Air/Ground EMS Frequencies and Hospital Contacts as applicable**

Function	Channel Name/Number	Receive (RX)	Tone/NAC *	Transmit (TX)	Tone/NAC *
COMMAND					
AIR-TO-GRND					
TACTICAL					

**7. CONTINGENCY: Considerations:** If primary options fail, what actions can be implemented in conjunction with primary evacuation method? Be thinking ahead.

**8. ADDITIONAL INFORMATION:** Updates/Changes, etc.

**REMEMBER:** Confirm ETA's of resources ordered. Act according to your level of training. Be Alert. Keep Calm. Think Clearly. Act Decisively.



