

# INCIDENT ACTION PLAN

## NIGHT SHIFT

### EAST CASTLE ZONE—SQF COMPLEX

Sequoia NF / Inyo NF / Sequoia-Kings Canyon NP / Tule River Tribe

## Values

### Firefighter and Public Safety

**Communities:** *Ponderosa, Camp Nelson, Pyles Boys Camp, Rogers Camp, Sequoia Crest, Cedar Slope, Alpine Village, Redwood Drive, Lloyd Meadows, Mountain Aire, Pierpoint, Doyle Springs, Mahogany and Coy Flats*

**Significant Natural Features:** *Tule River Municipal Watershed*

**Infrastructure & Physical Assets:** *Osa, Beach, Casa Vieja, USGS Seismic Station, Blackrock RS, Quinn RS, Kern RS, roads, bridges, utilities, other agency structures, private inholdings, dispersed/developed recreation sites*

**Cultural Sites:** *Monache Mountain, Monache Meadow, and other archaeological & cultural sites*

**Sequoia Groves:** *Freeman Giant Grove, and other groves*

**TES Habitat:** *Pacific Fisher, Little Kern Golden Trout, Mtn Yellow Legged Frog, CA Spotted Owl, Goshawk, Sierra Nevada Bighorn Sheep*



## **OPERATIONAL PERIOD**

Tuesday, September 22, 2020

Wednesday, September 23, 2020

0600 to 0600

CA-SQF-002541 P5NG2P (0513)



<b>INCIDENT OBJECTIVES</b>	1. Incident Name <b>EAST CASTLE ZONE SQF COMPLEX</b>	2. Date Prepared 9/21/2020	3. Time Prepared 1630
	<b>4. Operational Period</b>		
September 22, 2020 to September 23, 2020 0600 - 0600 DAY AND NIGHT SHIFT			
<b>5. General Control Objectives for the Incident</b>			
<ul style="list-style-type: none"> <li>• Provide point protection of values at risk within communities and associated infrastructure to prevent loss of structures, utilities, and developed sites and facilities including: <ul style="list-style-type: none"> <li>○ The communities of Camp Nelson, Pyles Boys Camp, Rogers Camp, Cedar Slope, Sequoia Crest, Alpine Village, Redwood Drive, Lloyd Meadows, Mountain Aire, Ponderosa, Pierpoint, Doyle Springs, Camp Wishon, Mahogany and Coy Flats;</li> <li>○ Tule River Municipal Watershed significant natural feature;</li> <li>○ Infrastructure at Blackrock, Kern, and Quinn Ranger Stations; Osa, Beach, and Casa Vieja Meadows; private inholdings; roads, bridges, utilities, trailheads, and developed and dispersed recreation sites;</li> <li>○ Monache Mountain, Monache Meadow and other archaeological and cultural sites; and</li> <li>○ Freeman Giant Sequoia Grove and other sequoia groves.</li> </ul> </li> <li>• Continue to hold and establish control lines that are safe for firefighters and provide a high probability of success to keep the fire north of Durr Wood Camp and west of Toowa Range to King Fisher Ridge to 22S05 Road.</li> <li>• Monitor the spread/growth of the Shotgun Fire using air operation assets.</li> <li>• Coordinate with Duty Officers from the Sequoia and Inyo NFs, Sequoia and Kings Canyon NPs, and the Tule River Indian Reservation on support to any new initial attack.</li> </ul>			
<b>6. Management Objectives</b>			
<ul style="list-style-type: none"> <li>• Establish and implement common objectives and strategies under unified command with Cal Fire Team 6.</li> <li>• Implement suppression actions that have a high potential for success, carefully weighing risk exposure to firefighters.</li> <li>• Provide for the safety of firefighters, aviation and public through clear communication. Ensure an understanding of strategies and tactics, including a clearly defined and obtainable end state, in order to facilitate sound risk mitigation decision making.</li> <li>• Implement social distancing and adhere to the “module of one” concept to reduce physical exposure and transmission of COVID-19, to provide for the health and safety of all incident personnel.</li> <li>• Minimize to the extent feasible smoke exposure to firefighters, communities and other affected areas to reduce susceptibility to the consequences from COVID-19 exposure.</li> <li>• Maintain and strengthen relationships with partner agencies, stakeholders, cooperators, community leaders, and local agencies utilizing most effective platforms available.</li> <li>• Minimize adverse effects from suppression actions on riparian areas, wetlands, Little Kern Golden Trout, Mountain Yellow Legged Frog, California Spotted Owl, Pacific Fisher, and Sierra Nevada Bighorn Sheep habitats.</li> <li>• Minimize impacts to Wilderness areas; use minimum impact suppression tactics (MIST) by utilizing trails, streams, ridges and natural barriers when possible for control lines.</li> </ul>			
<b>7. Commander’s Intent</b>			
<ul style="list-style-type: none"> <li>• <b>Safety:</b> Address fire fighter, public, and aviation safety through hazard/exposure mitigation.</li> <li>• <b>Communication:</b> We will keep the Agency Administrators informed of significant accomplishments and issues.</li> <li>• <b>Risk Management:</b> We will use a robust risk assessment process to mitigate unnecessary risk to fire fighters and update and/or revise decisions as necessary.</li> <li>• <b>Human Resources:</b> We will ensure that all incident personnel be treated with dignity and respect. We have a zero tolerance for harassment, alcohol, or illegal drug use.</li> <li>• <b>Operations:</b> We will make informed tactical decisions engaging the fire in the right locations with the appropriate resources.</li> <li>• <b>Public Information:</b> We will provide timely and accurate information through the press, meetings, trap lines, briefings, and social media.</li> <li>• <b>Stakeholders:</b> We will coordinate with the delegating agencies to identify key partners and keep them effectively informed of progress and to use their local knowledge.</li> <li>• <b>Finance:</b> We will establish and monitor cost effective methods for accomplishing incident objectives.</li> </ul>			
<b>8. ATTACHMENTS (X IF ATTACHED)</b>			
<input checked="" type="checkbox"/> Organization List - ICS 203		<input checked="" type="checkbox"/> Medical Plan - ICS 206	<input type="checkbox"/> _____
<input checked="" type="checkbox"/> Division Assignment Lists - ICS 204		<input checked="" type="checkbox"/> Unit Log 214	<input type="checkbox"/> _____
		<input checked="" type="checkbox"/> WF206 8 Line	<input type="checkbox"/> _____
<b>9. Prepared By (Planning Section Chief)</b>		<b>10. Approved By (Incident Commander)</b>	
Rob Carlin PSC1 (t)		Michael Goicoechea IC	

ORGANIZATION ASSIGNMENT LIST				Operations Section	
1. Incident Name		East Castle Zone SQF Complex		Field Operations	Scott Schrenk
2. Date Prepared	9/21/2020	3. Time Prepared	1700	Planning Operations	Brent Olson 406.249.4994 Andy Huntsberger (t) 406.249.5786
4. Operational Period				Night Operations	Andy James (t)
September 22, 2020 to September 23, 2020		0600 to 0600		Branch I Director	Justin Kaber
Incident Commander and Staff				Branch II Director	Ryan Butler
Incident Commander	Mike Goicoechea			Branch I	
Deputy	Mark Goeller / Greg Poncin			Backcountry / Lima	Geoff Farinholt / Richard Baker (t)
Safety Officer	Dan Cassidy / Gerald Vickers / Todd Mott (t)			Ponderosa	Kate Airhart / Tom McLeod (t)
Information Officer	Jeannette Smith 406.544.0131			Zulu	Stryker Clark / Jerry Olson (t)
Liaison Officer	Rob Taylor 406.544.4679 / Kay Jaquith			Branch II	
Agency Representative				Bravo	Rocky Wagoner
AA	Al Watson			Nelson	Hunter Seaborn Bell, III
INF AA	John (Pancho) Smith			Whiskey	Mike King / Graydon Galloway (t)
INF AR	Phillip DeSenze			Yankee	Trevor Unsworth
SEKI AA	Lee Taylor			Night	
SEKI AR	Tom Garcia			Yankee / Zulu	Bret Davidson / John Lange (t)
Tule River Tribe AR	Zane Santos 559.339.8686			Structure	Bryan Duffy
Cal Fire AR	Jesse Estrada			Swing	
Tulare Co FD	Jeff McLaughlin 559.731.8681			Swing	Jon Norman
Tulare CO Sheriff	Lt. Bobby Rader 559.731.3754			Air Operations Branch	
SoCAL Edison	Troy Whitman			Branch Director	Dennis Morton 406.660.2318
CHP	Chad Patton			Air Support Group Sup	John McKee 406.370.7028 / Dan Sepulveda
Tribal Liaison	Dirk Charley 559.554.5433			Air Tactical Group Sup	Justin Tashiro / Ken Crow
INBA	Kris Armstrong			Finance Section	
SQF / INYO READ	Tim Kelly 760.223.0257			Section Chief	Amy Schrenk 406.830.5214
Planning Section				Time Unit	Marta Lujan 970.275.3120
Section Chief	Robin Jermyn 406.360.5936 / Rob Carlin (t)			Equipment Time	Lynda Pike 406.382.0086
Deputy	Rob Gump 850.688.7623			Personnel Time	Tama Lester 580.212.1017
Situation Unit	Derek Trauntvein 307.431.8598			Cost Unit	Khon Viengkham 703.217.7269
Demobilization Unit	951.235.1568			Procurement Unit Leader	Dana Bangart 406.360.0029
Resources Unit Leader	858.204.7419			Comps / Claims	Leon Augustine 406.363.8956 Shannon Maxwell (t) 406.366.3724
Status Check-in	Faith Ann Heinsch 858.204.7419			WHITSETT ORGANIZATION	
Fire Behavior Analyst	Brian Anderson 406.660.0450 / David Greathouse			Deputy IC	Mark Goeller
Long-Term Analyst	LaWen Hollingsworth 406.552.5440 / Alicia Reiner (t)			Operations	Scott Schrenk / Andy James (t)
GIS Specialist	Erin Heiselmann 406.546.4014 Morgan Voss / McIntyre Murphy (t)			Logistics	Roylene Gaul
Computer Specialist	Tim McCracken 303.859.7753				
Meteorologist	Phillip Manuel 540.239.8961				
Human Resource	Debby Hassel 406.274.7985				
Logistics Section				TROY MEADOWS ORGANIZATION	
Section Chief	Charlie Showers 406.370.3787 Jim Evanoff 406.223.8660 / LeRoy Evans (t)			Base Camp Manager	David Lefevre 406.696.1512
Ordering Manager	Rita Lind 310.650.1222 or 423.534.9699 Kristin Troop (virtual)				
Supply Unit	Josh King 406.855.0984 / Brent Elmore (t)				
Facilities Unit	Janine Hammond 209.844.6220				
Food Unit	Ken Haberl 573.727.3593			CAL FIRE TEAM 6	
Base Camp	Dave Lefevre 406.696.1512			Field Operations – Scott Corne 530.448.2403 / Night Operations – Tim Ernst 213.924.4610 / Planning Operations – Scott Lane 951.581.2283	
Ground Support Unit	Keith Windell 213.503.4243			Prepared by:	Faith Ann Heinsch – RESL(t)
Communications Tech	Trent Coppinger 406.581.9027				
Medical Unit	Emily Ellick-Flettire 405.593.3369 / Levi Clymer				
Security Manager	Brian Thietje 262.994.8001				

# Safety Message

## Managing Change

Change occurs at every moment of every day. Transitions between work shifts, personnel, line assignments, fuels, weather, topography, and other variables are prime opportunities for accidents to occur. Recognizing change and managing it appropriately is every fire fighter's responsibility.

### Three Techniques for Managing Change:

- **Anticipate** - Look for it. Always maintain your situational awareness throughout your shift and anticipate change.
- **Ask Questions** - Understand it. Get more information and ask questions. Remember to include all personnel, including subordinates, when information gathering.
- **Take Action** - Address it. Take the time to mitigate all hazards and make them known. Stay flexible to adjust your tactics as necessary.

Communication is the best tool to begin understanding and addressing change appropriately. Include all personnel and means necessary to fully identify and communicate change.

The big change coming is a transition to a new IMT. We have all been working with our counterparts in each section to make it as seamless as possible. When in doubt, ask questions of your supervisors.

**Change is Here – Be Mindful and Act Appropriately**

Dan Cassidy SOF1 NR Team 1



# FIRE WEATHER FORECAST



**FORECAST NO:** 30  
**PREDICTION FOR:** Sept 22-23, 2020 0600-0600

**INCIDENT NAME:** East Castle Zone SQF Complex  
**UNIT:** CA-SQF  
**SIGNED:** *Phil Manuel*

**TIME AND DATE**  
**FORECAST ISSUED:** Mon, Sep 21 @ 2000 hours

**Incident Meteorologist – Phil Manuel**

**WEATHER DISCUSSION:** A weak trough (upper level disturbance) will move across the area today. It will go unnoticed by most, since little or no cloud formation will be present. However, it will result in gusty ridgetop winds, translating into sudden changes in wind direction along the slopes and into the valleys. Temperatures may trend a degree or two cooler today and Wednesday, but the daily humidity trends will be similar with minimums dipping into the teens, and only modest recovery at night. Concerns remain focused on the persistent dry conditions and lack of rainfall. Today is day 109 since we have had over a tenth of an inch of rain. The storms that produced the fires in August were dry thunderstorms containing little or no rain, thus the need to look all the way back to early June to find anything meaningful.

**SKY/WEATHER TODAY (TUESDAY):** Mostly sunny. Breezier along the ridgetops. Expect the surface inversion to lift between 1100-1200 outside of heavy smoke.

**MAX TEMPERATURES / MIN RELATIVE HUMIDITY:**

**5000 FT:** 76 to 82 degrees (Down 2) / 16 to 20 (Up 3)  
**7000 FT:** 68 to 75 degrees (Down 3) / 16 to 22 (Up 3)

**20-FT WINDS:**

**Slope/Valley:** Morning drainage winds will become upslope/upcanyon 1000-1100 with speeds 6 to 10, gusts to 17 mph. Stronger winds in west to east aligned drainages and canyons.

**Ridges:** North 3 to 5 mph until 1000. After 1000, west 8 to 12 G20 mph.

**MIXING HEIGHT...**9,000 FT AGL **VENTILATION...** Poor in the morning, Excellent in the afternoon.  
**TRANSPORT WIND...** West 10 mph.  
**CWR (0.10")...**0% **LAL....**1 **HAINES....**5

**SKY/WEATHER TONIGHT (TUESDAY NIGHT):** Mostly Clear with heavy smoke in the Kern River Valley. Modest humidity recoveries.

**MIN TEMPERATURES / MAX RELATIVE HUMIDITY**

**5000 FT:** 42 to 47 degrees (Unchanged) / 40 to 50% (Unchanged)  
**7000 FT:** 47 to 52 degrees (Unchanged) / 30 to 40% (Unchanged)

**20-FT WINDS:**

**Slope/Valley:** Downslope/Down canyon 2 to 5 mph. Gusts 10 mph in the deeper canyons.

**Ridges:** Northwest-North 4 to 8 mph.

**CWR (0.10")...**0% **LAL....**1

**WEDNESDAY:** Inversion lifting by 1100-1200 outside of heavy smoke. Mostly Sunny and smoky.  
**Max Temps:** 70 to 82. **Min RH:** 14 to 18%. **Winds:** **Slope/Valley:** Upslope/upcanyon 4 to 7 mph during the day, and downslope/down canyon at night.  
**Ridge:** North in the morning, then West-Southwest 4-8 G12 mph after 1100.  
**LAL:** 1 **CWR (0.10"):** 0% **MIXING HEIGHT:** 6,000 FT AGL **HAINES:** 4

**OUTLOOK for THURSDAY Through SATURDAY:**

**THURSDAY:** Mostly sunny. **High Temp:** 70-80. **Min RH:** 20. **Ridge Wind:** WSW 5-8 G15 mph.  
**FRIDAY:** Mostly sunny. **High Temp:** 72-82. **Min RH:** 20. **Ridge Wind:** W 6-10 G20 mph.  
**SATURDAY:** Mostly sunny. **High Temp:** 74-84. **Min RH:** 15. **Ridge Wind:** S-SW 6-10 G17 mph.

\*\*\*Weather Observations would be greatly appreciated\*\*\*

Please email them to [phillip.manuel@noaa.gov](mailto:phillip.manuel@noaa.gov) or text an image of your daily weather log to 540-239-8961

# FIRE BEHAVIOR FORECAST

FORECAST NUMBER: 32 Day

TYPE OF FIRE: Wildland

FIRE NAME: East Castle Zone SQF Complex

OPERATIONAL PERIOD: 9/22/2020 0600-2000

DATE ISSUED: September 21, 2020

TIME ISSUED: 2000

UNIT: CA-Sequoia National Forest

SIGNED: /s/ David Greathouse

## WEATHER

**\*\*Mostly Sunny, Breezy on the Ridgetops today\*\***

(See Weather forecast for details)

**Weather thresholds for large fire growth: Temps greater than 83°, RH's less than 20%, 20ft winds greater than 7mph**

**Rule of Thumb – To figure 20' winds, divide the observed eye level winds by .3**

## FUELS

**Fuels-** There are three primary fuels in the fire area. In the higher elevations above 5000' mixed conifer fuel types with a heavy load of dead and down dominate the fire area. At the mid elevations the fuels transition into more of a brush type. This will include most burn scars in the area. At the lower elevations, grass is the dominate fuel. There is a heavy component of beetle killed timber in the grey stage throughout the fire area. These pockets could lead to increased dead fuel loads in these areas. The fuels are critically dry for this time of year. The ERC-G is currently setting historical maximums and the 100-hr and 1000-hr fuel moistures are at historical lows. These indices indicate all dead fuels are available to contribute to fire intensity.

**Topography-** Topography in the fire area is dominated by two features. The Kern river valley runs north/south and bisects the fire can produce diurnal up/down slope winds that can be strong enough to overpower the prevailing winds. The Tule River Canyon on the west side of the fire runs from the San Joaquin valley to east to about Ponderosa. This canyon can affect the winds and associated fire spread, especially at night.

## FIRE BEHAVIOR

**All Divisions:** Another day of warm temperatures and dry relative humidity means active fire behavior. Surface fire with occasional torching will be observed. Any rollouts have the potential for short duration crown runs. Downwind spotting is likely the probability of ignition is 80%-100%. Except under heavy smoke, expect fire activity to increase when the inversion lifts, around 1100, peak out around 1600-1700 before moderating after dark

Expect head fire surface rates of spread in the timber fuel to be around 8-12 ch/hr and 5'-8' flame lengths on 30% slope. Remember, these rates of spread are for surface fire only. Crown fire and spotting will increase the overall rate of spread. A good rule of thumb to use in determining ROS and FL on the flanks is to cut the head fire ROS and FL in half. Backing fire will be about 3-4 ch/hr with 2'4' flame lengths

**Div Y** – Expect the fire to continue to flank west above the Coy Flat road today. As the fire moves, it could position itself for upslope runs towards Nelson Peak. Otherwise, the fire will continue back down southward between Slate Mountain and highway 190.

**Div Z** – Expect another active day of flanking and backing fire all along the division today. With the forecasted winds, smoke from the fire, as well as smoke from Div Y could impact Ponderosa. If this happens, be heads up for spot fires, especially in the hand piles. **Pay Attention! Spotting is possible across the Kern River today.** If the fire does spot over the Kern, aggressive attack from air resources should keep fire growth to a minimum in the brush fuels.

## AIR OPERATIONS

Smoke nor fire behavior should not affect air operations after the inversion has lifted, between 1100-1200

## SAFETY

"I will not allow yesterday's success to lull me into today's complacency, for this is the great foundation of failure." - Og Mandino.

DIVISION ASSIGNMENT LIST				Branch		Division/Group				
Incident Name				I		BACKCOUNTRY / LIMA				
EAST CASTLE ZONE SQF COMPLEX				Operational Period						
				Date: 9/22/2020 to 9/23/2020			Time: 0600-0600			
Operations Personnel										
Operations Chief		Brent Olson, Scott Schrenk Andy Huntsberger (t)		Branch Director		Justin Kaber				
Air Operations		Dennis Morton, John McKee Dan Sepulveda		Division/Group Supervisor		Geoff Farinholt / Richard Baker (t) 406-529-5671				
Safety Officer		Dan Cassidy, Gerald Vickers								
Division/Group Supervisor										
Strike Team/Task Force/ Resource Designator	Req#	Last Shift	Leader			# Persons	Drop Off Point /Time		Pick Up Point / Time	
WFM Slate	O-4	9/22	Angel Reyes			11	Troy Meadow 0600		Troy Meadow 2100	
ENG3 SQF E341	E-216	9/22	Merritt Cuttin			5	Troy Meadow 0600		Troy Meadow 2100	
ENG3 Gonzales	E-256	9/26	Steve Reason			3	Troy Meadow 0600		Troy Meadow 2100	
ENG6 Cate Land Fire	E-203	10/2	Vanessa Aldrich			3	Troy Meadow 0600		Troy Meadow 2100	
ENG6 White Horse	E-199	9/30	Jason McGaughy			3	Troy Meadow 0600		Troy Meadow 2100	
ENG6 Late Summers	E-200	9/28	Josh Crollard			3	Troy Meadow 0600		Troy Meadow 2100	
ENG6 Late Summers	E-201	9/28	Brad Beck			3	Troy Meadow 0600		Troy Meadow 2100	
ENG6 R&R Fire	E-205	9/29	Mike Cox			3	Troy Meadow 0600		Troy Meadow 2100	
DOZ2	E-140	10/1	Eric Pybas			1	Troy Meadow 0600		Troy Meadow 2100	
CHIP	E-189	9/24	Don Kelley			2	Troy Meadow 0600		Troy Meadow 2100	
EXCA	E-187	9/25	Kody Williams			1	Troy Meadow 0600		Troy Meadow 2100	
FMOD Under Dog	O-596	9/26	Gary Balmain			2	Troy Meadow 0600		Troy Meadow 2100	
KNP E42	E-418	9/30	Jeff Singer			3	Troy Meadow 0600		Troy Meadow 2100	
EMPF	O-497	9/23	Tom Kavanaugh			1	Troy Meadow 0600		Troy Meadow 2100	
EMPF	O-551	9/23	Matthew Heckman			1	Troy Meadow 0600		Troy Meadow 2100	
EMPF	O-581	9/25	Joshua Terry			1	Troy Meadow 0600		Troy Meadow 2100	
AMBU	E-52	10/3	Castle 2			2	Troy Meadow 0600		Troy Meadow 2100	
REAF	O-858	9/26	Lauren Archer			1	Troy Meadow 0600		Troy Meadow 2100	
<b>Work Assignments</b>										
<p><b>Task:</b> Maintain readiness and structure protection in: Bonita Meadow, West Meadow, Beach Meadow and Blackrock Work Center. Recon and develop a structure protection plan for Monache. Continue to go direct with crews and equipment on eastern finger of fire north of Beach Meadows. Monitor DIV N from the air and utilize air resources as needed to keep green islands from impacting control lines. Assist with point protection as needed.</p> <p><b>Purpose:</b> Limit impact to values at risk.</p> <p><b>End State:</b> Values at risk are not impacted by fire. A plan to protect values at risk is developed for the Monache area. The spread of fire to the south and east is limited in divisions L/N.</p>										
<b>Special Instructions</b>										
<ul style="list-style-type: none"> <li>• <b>A/G Tac for Branch Five: RX169.200, TX 169.200. This needs to be hand programmed.</b></li> <li>• Personnel to notify DIVS of potentially sensitive cultural materials.</li> <li>• Castle Ambulance 3 staged at Whitsett Base Camp. Castle Ambulance 2 staged at the Blackrock Ranger Station. REMS available to all divisions.</li> <li>• Prioritization of all control or containment actions taken during the operational period in this Division will be at the discretion of the DIVS. Actions may have to be taken by the DIVS that are not enumerated in today's IAP. These actions would be a result of a significant change in actual or expected fire behavior over and above that anticipated at the time the IAP was prepared. These actions will be coordinated with and approved by the OSC whenever possible.</li> </ul>										
<b>Division/Group Communication Summary</b>										
<b>Function</b>	Channel	Frequency RX	Frequency TX	TONE RX	TONE TX	<b>Function</b>	Channel	Frequency RX	Frequency TX	
COMMAND	2	170.6875	166.5750	151.4	151.4	A/G TAC	13	172.3500	172.3500	
COMMAND	3	172.5500	162.1875	151.4	151.4	A/G CMD	14	169.1500	169.1500	
NIFC T7	9	168.2500	168.2500	151.4	151.4					
Prepared by Faith Ann Heinsch – RESL (t)		Approved By Robin Jermyn - PSC				Date 9/21/2020			Time 1800	

DIVISION ASSIGNMENT LIST				Branch		Division/Group			
Incident Name				I		PONDEROSA Page 1 of 2			
EAST CASTLE ZONE SQF COMPLEX				Operational Period					
				Date: 9/22/2020 to 9/23/2020		Time: 0600-0600			
Operations Personnel									
Operations Chief		Brent Olson, Scott Schrenk Andy Huntsberger (t)		Branch Director		Justin Kaber 406-250-1455			
Air Operations		Dennis Morton, John McKee Dan Sepulveda		Division/Group Supervisor		Kate Airhart / Tom McLeod (t) 406-360-0506 / 208-451-5050			
Safety Officer		Dan Cassidy, Gerald Vickers							
Resources Assigned This Period									
Strike Team/Task Force/ Resource Designator	Req#	Last Shift	Leader	# Persons	Drop Off Point /Time	Pick Up Point / Time			
HC2 Dust Busters Plus	C-80	10/3	Harper Resewehr	20	Whitsett Base 0600	Whitsett Base 2100			
ENG3 J3 Contracting	E-252	9/25	Jacob Vavricka	3	Whitsett Base 0600	Whitsett Base 2100			
ENG3 J3 Contracting	E-253	10/1	Wesley Wallace	3	Whitsett Base 0600	Whitsett Base 2100			
ENG4 Great Basin	E-378	10/2	David Grass	3	Whitsett Base 0600	Whitsett Base 2100			
ENG6 LUR 8160	E-396	10/4	Rondald Sandling	4	Whitsett Base 0600	Whitsett Base 2100			
WTT2 Dust Busters	E-89	9/24	Albert Angulo	1	Whitsett Base 0600	Whitsett Base 2100			
<b>TFLD</b>	O-947	9/28	Ron Seymour	1	Whitsett Base 0600	Whitsett Base 2100			
ENG3 Green Valley	E-356	9/22	Mike Carrafa	3	Whitsett Base 0600	Whitsett Base 2100			
ENG3 Avondale Brush	E-357	9/22	Steve Mayhew	4	Whitsett Base 0600	Whitsett Base 2100			
ENG3 Tri City Fire	E-358	9/22	Servondo Henry	4	Whitsett Base 0600	Whitsett Base 2100			
ENG3 Brush 302	E-359	9/29	Chris Ader	3	Whitsett Base 0600	Whitsett Base 2100			
ENG6 J3 Contracting	E-355	9/28	Ric Hodges	3	Whitsett Base 0600	Whitsett Base 2100			
ENG6 J3 Contracting	E-364	9/28	John Piety	3	Whitsett Base 0600	Whitsett Base 2100			
WTT2 Humphries	E-334	9/29	Daniel French	1	Whitsett Base 0600	Whitsett Base 2100			
WTT2 Hart	E-348	9/27	Robert McCleve	1	Whitsett Base 0600	Whitsett Base 2100			
WTT2 Hart	E-351	9/27	Jacob Tennyson	1	Whitsett Base 0600	Whitsett Base 2100			
Work Assignments									
<p><b>Task:</b> Assess opportunities and implement point source protection to values in the Ponderosa, Quaking Aspen and Peppermint work center areas where feasible and safe to engage. Continue to utilize aircraft to limit fire spread around values. Implement firing operations as directed by Branch 1. Coordinate suppression actions with adjacent divisions.</p> <p><b>Purpose:</b> Minimize fire impacts to values within the mountain communities located within the division.</p> <p><b>End State:</b> Limit fire spread into additional values at risk to protect communities and infrastructure.</p>									
Special Instructions									
<ul style="list-style-type: none"> <li>Personnel to notify DIVS of potentially sensitive cultural materials.</li> <li>Castle Ambulance 3 staged at Whitsett Base Camp. Castle Ambulance 2 staged at Blackrock Ranger Station. REMS available to all divisions.</li> <li>Prioritization of all control or containment actions taken during the operational period in this Division will be at the discretion of the DIVS. Actions may have to be taken by the DIVS that are not enumerated in today's IAP. These actions would be a result of a significant change in actual or expected fire behavior over and above that anticipated at the time the IAP was prepared. These actions will be coordinated with and approved by the OSC whenever possible.</li> </ul>									
Division/Group Communication Summary									
Function	Channel	Frequency RX	Frequency TX	TONE RX	TONE TX	Function	Channel	Frequency RX	Frequency TX
COMMAND	1	170.0000	166.6750	151.4	151.4	A/G TAC	13	172.3500	172.3500
NIFC T1	5	168.0500	168.0500	151.4	151.4	A/G CMD	14	169.1500	169.1500
Prepared by		Approved By				Date		Time	
Faith Ann Heinsch – RESL (t)		Robin Jermyn - PSC				9/21/2020		1800	



DIVISION ASSIGNMENT LIST				Branch		Division/Group				
<b>Incident Name</b>  <b>EAST CASTLE ZONE SQF COMPLEX</b>				I		<b>PONDEROSA</b>				
						Page 2 of 2				
				Operational Period						
				Date: 9/22/2020 to 9/23/2020				Time: 0600-0600		
Operations Personnel										
Operations Chief		Brent Olson, Scott Schrenk Andy Huntsberger (t)			Branch Director			Justin Kaber 406-250-1455		
Air Operations		Dennis Morton, John McKee Dan Sepulveda			Division/Group Supervisor			Kate Airhart / Tom McLeod (t) 406-360-0506 / 208-451-5050		
Safety Officer		Dan Cassidy, Gerald Vickers								
<b>Resources Assigned This Period</b>										
Strike Team/Task Force/ Resource Designator	Req#	Last Shift	Leader		# Persons	Drop Off Point /Time		Pick Up Point / Time		
TFLD	O-1008	9/22	Matt Chambers		1	Whitsett Base 0600		Whitsett Base 2100		
ENG6 High Desert	E-137	9/28	Thomas Hanks		3	Whitsett Base 0600		Whitsett Base 2100		
ENG6 R Costruction	E-166	9/28	Richard DeRoche		3	Whitsett Base 0600		Whitsett Base 2100		
ENG6 Red Dog	E-167	9/28	Tim England		2	Whitsett Base 0600		Whitsett Base 2100		
ENG6 Cibola	E-398	9/30	Jacob Randall		4	Whitsett Base 6000		Whitsett Base 2100		
WTT2 49ers	E-50	9/27	Steve Smith		1	Whitsett Base 0600		Whitsett Base 2100		
WTT2 Rocky Mtn	E-381	10/2	James Foster		1	Whitsett Base 0600		Whitsett Base 2100		
GRD2 Kirkland	E-97	9/30	Todd Adams		2	Whitsett Base 0600		Whitsett Base 2100		
SKD1 McKellar	E-214	9/24	Harley Toller		2	Whitsett Base 0600		Whitsett Base 2100		
FMOD Jackson Fallers	O-996	10/2	Kyle Jackson		2	Whitsett Base 0600		Whitsett Base 2100		
FMOD ACS Fallers	O-997	10/2	Craig Onken		2	Whitsett Base 0600		Whitsett Base 2100		
SOFR (t)	O-393	9/23	Jacob Brollier		1	Whitsett Base 0600		Whitsett Base 2100		
EMPF	O-974	9/28	Larry Hoqueisson		1	Whitsett Base 0600		Whitsett Base 2100		
EMPF	O-958	9/28	Brian Boulware		1	Whitsett Base 0600		Whitsett Base 2100		
REAF	O-894	9/27	Jared Kellogg		1	Whitsett Base 0600		Whitsett Base 2100		
<b>Work Assignments</b>										
<b>Task:</b> Assess opportunities and implement point source protection to values in the Ponderosa, Quaking Aspen and Peppermint work center areas where feasible and safe to engage. Continue to utilize aircraft to limit fire spread around values. Implement firing operations as directed by Branch 1. Coordinate suppression actions with adjacent divisions.										
<b>Purpose:</b> Minimize fire impacts to values within the mountain communities located within the division.										
<b>End State:</b> Limit fire spread into additional values at risk to protect communities and infrastructure.										
<b>Special Instructions</b>										
<ul style="list-style-type: none"> <li>Personnel to notify DIVS of potentially sensitive cultural materials.</li> <li>Castle Ambulance 3 staged at Whitsett Base Camp. Castle Ambulance 2 staged at Blackrock Ranger Station. REMS available to all divisions.</li> <li>Prioritization of all control or containment actions taken during the operational period in this Division will be at the discretion of the DIVS. Actions may have to be taken by the DIVS that are not enumerated in today's IAP. These actions would be a result of a significant change in actual or expected fire behavior over and above that anticipated at the time the IAP was prepared. These actions will be coordinated with and approved by the OSC whenever possible.</li> </ul>										
<b>Division/Group Communication Summary</b>										
Function	Channel	Frequency RX	Frequency TX	TONE RX	TONE TX	Function	Channel	Frequency RX	Frequency TX	
COMMAND	1	170.0000	166.6750	151.4	151.4	A/G TAC	13	172.3500	172.3500	
NIFC T1	5	168.0500	168.0500	151.4	151.4	A/G CMD	14	169.1500	169.1500	
Prepared by Faith Ann Heinsch – RESL (t)		Approved By Robin Jermyn - PSC				Date 9/21/2020			Time 1800	

DIVISION ASSIGNMENT LIST				Branch		Division/Group				
Incident Name				I		ZULU				
EAST CASTLE ZONE SQF COMPLEX				Operational Period						
				Date: 9/22/2020 to 9/23/2020 Time: 0600-0600						
Operations Personnel										
Operations Chief		Brent Olson, Scott Schrenk Andy Huntsberger (t)			Branch Director			Justin Kaber 406-250-1455		
Air Operations		Dennis Morton, John McKee Dan Sepulveda			Division/Group Supervisor			Stryker Clark / Jerry Olson (t) 406-546-7405		
Safety Officer		Dan Cassidy, Gerald Vickers								
Resources Assigned This Period										
Strike Team/Task Force/ Resource Designator		Req#	Last Shift	Leader		# Persons	Drop Off Point /Time		Pick Up Point / Time	
HC1 Inyo		C-106	9/30	Joel Schilling		19	Whitsett Base 0600		Whitsett Base 2100	
HC1 Los Padres		C-110	9/28	Matt Aoki		19	Whitsett Base 0600		Whitsett Base 2100	
<b>TFLD</b>		O-259	9/23	Isaac Solomon		1	Whitsett Base 0600		Whitsett Base 2100	
<b>TFLD (t)</b>		O-1027	10/2	Dane Ostler		1	Whitsett Base 0600		Whitsett Base 2100	
ENG3 BLM E3130		E-399	10/2	Juan Najera		6	Whitsett Base 0600		Whitsett Base 2100	
ENG3 San Juan County E31		E-365	9/30	Aarion Austin		3	Whitsett Base 0600		Whitsett Base 2100	
ENG4		E-134	10/5	Dan Hokanson		3	Whitsett Base 0600		Whitsett Base 2100	
ENG6 Flame Chaser		E-133	9/21	Duane Many Hides		3	Whitsett Base 0600		Whitsett Base 2100	
ENG6 Interior 5-5		E-371	10/2	Chase Strand		3	Whitsett Base 0600		Whitsett Base 2100	
ENG6 BLM E3143		E-395	10/2	Cuahutemoc Baltazar		4	Whitsett Base 0600		Whitsett Base 2100	
ENG6 Arkansas FS E652		E-397	10/2	Nick Kerr		5	Whitsett Base 0600		Whitsett Base 2100	
WTT2 Dust Busters		E-49	9/25	Nathan Stutz		2	Whitsett Base 0600		Whitsett Base 2100	
WTT2 Valley Farm		E-88	10/3	Jeff Bates		1	Whitsett Base 0600		Whitsett Base 2100	
WTT2 SQF		E-352	9/30	Jaime Ayala		2	Whitsett Base 0600		Whitsett Base 2100	
EXC2 Shannon Bros		E-179	9/27	Chuck Sandborg		1	Whitsett Base 0600		Whitsett Base 2100	
DOZ2 Muth Equipment		E-5	9/28	Justin Tufts		4	Whitsett Base 0600		Whitsett Base 2100	
DOZ2 Shannon Bros		E-44	9/28	Bill Shannon		1	Whitsett Base 0600		Whitsett Base 2100	
DOZ2 Connor		E-83	9/23	Tim Connor		1	Whitsett Base 0600		Whitsett Base 2100	
SKD1 McKellar		E-193	9/25	Brett Strong		1	Whitsett Base 0600		Whitsett Base 2100	
SKG2 Alvord Fire		E-194	9/26	John Morey		2	Whitsett Base 0600		Whitsett Base 2100	
FMOD Swedberg Const		O-599	9/22	Wade Giguere		2	Whitsett Base 0600		Whitsett Base 2100	
SOF1		O-934	9/28	David Provencio		1	Whitsett Base 0600		Whitsett Base 2100	
EMPF		O-91	9/29	Royce Copeman		1	Whitsett Base 0600		Whitsett Base 2100	
EMPF		O-1074	10/4	Silas Fisher		1	Whitsett Base 0600		Whitsett Base 2100	
AMBU		E-170	9/27	Castle 3		2	Whitsett Base 0600		Whitsett Base 2100	
Work Assignments										
<b>Task:</b> Implement point source protection to values in Ponderosa, Pyles Camp, Lloyd Meadows. Scout for direct and indirect containment opportunities along the southern edge. Coordinate with adjacent divisions.										
<b>Purpose:</b> Minimize impacts to values and limit fire spread to the southwest.										
<b>End State:</b> Fire impacts to private property and infrastructure is minimized to the extent possible, natural resource impacts are limited, and there are no accidents or injuries to firefighters or the public.										
Special Instructions										
<ul style="list-style-type: none"> <li>Personnel to notify DIVS of potentially sensitive cultural materials.</li> <li>Castle Ambulance 3 staged at Whitsett Base Camp. Castle Ambulance 2 staged at Blackrock Ranger Station. REMS available to all divisions.</li> <li>Crews be prepared to spike.</li> <li>Prioritization of all control or containment actions taken during the operational period in this Division will be at the discretion of the DIVS. Actions may have to be taken by the DIVS that are not enumerated in today's IAP. These actions would be a result of a significant change in actual or expected fire behavior over and above that anticipated at the time the IAP was prepared. These actions will be coordinated with and approved by the OSC whenever possible.</li> </ul>										
Division/Group Communication Summary										
Function	Channel	Frequency RX	Frequency TX	TONE RX	TONE TX	Function	Channel	Frequency RX	Frequency TX	
COMMAND	1	170.0000	166.6750	151.4	151.4	A/G TAC	13	172.3500	172.3500	
NIFC T7	9	168.2500	168.2500	151.4	151.4	A/G CMD	14	169.1500	169.1500	
Prepared by Faith Ann Heinsch – RESL (t)		Approved By Robin Jermyn – PSC				Date 9/21/2020			Time 1800	

DIVISION ASSIGNMENT LIST				Branch		Division/Group			
Incident Name				II		BRAVO			
EAST CASTLE ZONE SQF COMPLEX				Operational Period					
				Date: 9/22/2020 to 9/23/2020 Time: 0600-0600					
Operations Personnel									
Operations Chief	Brent Olson, Scott Schrenk Andy Huntsberger (t)			Branch Director		Ryan Butler 406-250-0375			
Air Operations	Dennis Morton, John McKee Dan Sepulveda			Division/Group Supervisor		Rocky Wagoner 406-531-9809			
Safety Officer	Dan Cassidy, Gerald Vickers								
Resources Assigned This Period									
Strike Team/Task Force/ Resource Designator	Req#	Last Shift	Leader	# Persons	Drop Off Point /Time	Pick Up Point / Time			
HC1 Fulton	C-99	10/3	Greg Cole	20	Camp Nelson 0600	Camp Nelson 2100			
ENG4 Duke City Fire	E-367	9/30	Marcos Montoya	3	Camp Nelson 0600	Camp Nelson 2100			
ENG6 Buffalo Bill	E-132	9/30	Gregg Webster	3	Camp Nelson 0600	Camp Nelson 2100			
ENG6 Allen E619	E-312	9/29	Peter Allen	3	Camp Nelson 0600	Camp Nelson 2100			
ENG6 Double D	E-313	9/29	Matthew Dimas	3	Camp Nelson 0600	Camp Nelson 2100			
ENG6 STF E342	E-402	10/3	Justin Franklin	4	Camp Nelson 0600	Camp Nelson 2100			
DOZ2 Shannon Bros	E-45	9/27	John Shannon	1	Camp Nelson 0600	Camp Nelson 2100			
DOZ2 Westlund	E-139	10/2	Anthony Pezzi	2	Camp Nelson 0600	Camp Nelson 2100			
SKG2 Alvord Fire	E-422	9/23	Justin Davis	1	Camp Nelson 0600	Camp Nelson 2100			
SOF2	O-496	9/23	Tom Nash	1	Camp Nelson 0600	Camp Nelson 2100			
SOF2 (t)	O-888	9/26	Roy Cribb	1	Camp Nelson 0600	Camp Nelson 2100			
REMS	E-217	9/26	Ray Storm	6	Camp Nelson 0600	Camp Nelson 2100			
<b>Work Assignments</b>									
<p><b>Task:</b> Implement point source protection around values in Pierpoint, Camp Nelson and Coy Flat where feasible. Utilize aerial resources to limit fire spread around values at risk. Utilize direct and indirect tactics to work toward containing spread and evaluate opportunities for indirect containment lines farther to the south. Coordinate with adjacent divisions to ensure an integrated strategy. Coordinate all actions with Cal Fire Team 6.</p> <p><b>Purpose:</b> Minimize impacts to surrounding communities and limit fire spread to the south and west.</p> <p><b>End State:</b> Impacts to local communities and infrastructure was kept to a minimum.</p>									
<b>Special Instructions</b>									
<ul style="list-style-type: none"> <li>Personnel to notify DIVS of potentially sensitive cultural materials.</li> <li>Castle Ambulance 3 staged at Whitsett Base Camp. Castle Ambulance 2 staged at Blackrock Ranger Station. REMS available to all divisions.</li> <li>Prioritization of all control or containment actions taken during the operational period in this Division will be at the discretion of the DIVS. Actions may have to be taken by the DIVS that are not enumerated in today's IAP. These actions would be a result of a significant change in actual or expected fire behavior over and above that anticipated at the time the IAP was prepared. These actions will be coordinated with and approved by the OSC whenever possible.</li> </ul>									
<b>Division/Group Communication Summary</b>									
<b>Function</b>	Channel	Frequency RX	Frequency TX	TONE RX	TONE TX	<b>Function</b>	Channel	Frequency RX	Frequency TX
COMMAND	1	170.0000	166.6750	151.4	151.4	A/G TAC	13	172.3500	172.3500
NIFC T3	6	168.6000	168.6000	151.4	151.4	A/G CMD	14	169.1500	169.1500
Prepared by	Approved By			Date		Time			
Faith Ann Heinsch – RESL (t)	Robin Jermyn - PSC			9/21/2020		1800			

DIVISION ASSIGNMENT LIST				Branch		Division/Group				
Incident Name				II		NELSON				
EAST CASTLE ZONE SQF COMPLEX				Operational Period						
				Date: 9/22/2020 to 9/23/2020			Time: 0600-0600			
Operations Personnel										
Operations Chief		Brent Olson, Scott Schrenk Andy Huntsberger (t)			Branch Director			Ryan Butler 406-250-0375		
Air Operations		Dennis Morton, John McKee Dan Sepulveda			Division/Group Supervisor			Hunter Seaborn Bell, III 406-670-5633		
Safety Officer		Dan Cassidy, Gerald Vickers								
Resources Assigned This Period										
Strike Team/Task Force/ Resource Designator	Req#	Last Shift	Leader	# Persons	Drop Off Point /Time	Pick Up Point / Time				
S/T 2806A	E-280	9/25	Kevin Gotro	21	Camp Nelson 0600	Camp Nelson 2100				
S/T 5810A	E-281	9/25	Sal Gutierrez	22	Camp Nelson 0600	Camp Nelson 2100				
S/T 5186B	E-354	9/26	Dwayne Shires	20	Camp Nelson 0600	Camp Nelson 2100				
ENG3 Greater Eagle	E-246	10/4	Clayton Forsyth	5	Camp Nelson 0600	Camp Nelson 2100				
ENG6 Carlsbad 62	E-259	9/25	Scott Maxwell	3	Camp Nelson 0600	Camp Nelson 2100				
ENG6 Sandoval Brush 22	E-260	9/25	Harris Toya	3	Camp Nelson 0600	Camp Nelson 2100				
ENG6 Farmington Brush 6	E-261	9/25	Duane Bair	2	Camp Nelson 0600	Camp Nelson 2100				
ENG6 Sac Mtn 218	E-262	9/25	Barbara Stephens	3	Camp Nelson 0600	Camp Nelson 2100				
ENG3 SQF E323	E-442	10/2	Jesus Sanchez	5	Camp Nelson 0600	Camp Nelson 2100				
WTT2 K&B	E-236	9/25	James Davis	1	Camp Nelson 0600	Camp Nelson 2100				
WTT1 OES WT139	E-282	10/2	Dan De Young	2	Camp Nelson 0600	Camp Nelson 2100				
WTT1 OES WT42	E-283	10/2	Jared Mcelhannon	2	Camp Nelson 0600	Camp Nelson 2100				
WTT1 WT51	E-285	9/27	John Davies	2	Camp Nelson 0600	Camp Nelson 2100				
SOFR (t)	O-511	9/24	Augie Barreda	1	Camp Nelson 0600	Camp Nelson 2100				
EMPF	O-863	9/29	Chris Inman	1	Camp Nelson 0600	Camp Nelson 2100				
AMBU5	E-337	9/23	Castle 5	2	Camp Nelson 0600	Camp Nelson 2100				
Work Assignments										
<p><b>Task:</b> Support line divisions with fireline perimeter control as instructed by Branch Director or Operations Section Chief. Reinforce structure protection plans with hose lays, static water supply and hazard mitigation as instructed by Group Supervisor for values at risk in Camp Nelson, Cedar Slope, Apline Village, Sequoia Crest and Pierpoint. Assist Ponderosa Structure Group as requested by Operations Section Chief or Branch Director.</p> <p><b>Purpose:</b> Protect values at risk from wildfire impacts with emphasis on supporting fireline perimeter control well in advance of direct threats to communities and improvements.</p> <p><b>End State:</b> Values at risk and communities are able to operate in pre-fire condition accounting for public safety.</p>										
Special Instructions										
<ul style="list-style-type: none"> <li>Personnel to notify DIVS of potentially sensitive cultural materials.</li> <li>Castle Ambulance 3 staged at Whitsett Base Camp. Castle Ambulance 2 staged at Black Rock Ranger station. REMS available to all divisions.</li> <li>Prioritization of all control or containment actions taken during the operational period in this Division will be at the discretion of the DIVS. Actions may have to be taken by the DIVS that are not enumerated in today's IAP. These actions would be a result of a significant change in actual or expected fire behavior over and above that anticipated at the time the IAP was prepared. These actions will be coordinated with and approved by the OSC whenever possible.</li> </ul>										
Division/Group Communication Summary										
Function	Channel	Frequency RX	Frequency TX	TONE RX	TONE TX	Function	Channel	Frequency RX	Frequency TX	
COMMAND R5 T6	1	170.0000	166.6750	151.4	151.4	A/G TAC	13	172.3500	172.3500	
	11	168.2375	168.2375	151.4	151.4	A/G CMD	14	169.1500	169.1500	
Prepared by Faith Ann Heinsch – RESL (t)		Approved By Robin Jermyn - PSC				Date 9/21/2020			Time 1800	

DIVISION ASSIGNMENT LIST				Branch		Division/Group				
Incident Name				II		WHISKEY				
EAST CASTLE ZONE SQF COMPLEX				Operational Period						
				Date 9/22/2020 to 9/23/2020				Time 0600-0600		
Operations Personnel										
Operations Chief		Brent Olson, Scott Schrenk Andy Huntsberger (t)			Branch Director			Ryan Butler 406-250-0375		
Air Operations		Dennis Morton, John McKee Dan Sepulveda			Division/Group Supervisor			Mike King / Graydon Galloway (t) 406-370-2121 / 208-546-9653		
Safety Officer		Dan Cassidy, Gerald Vickers								
Resources Assigned This Period										
Strike Team/Task Force/ Resource Designator		Req#	Last Shift	Leader		# Persons	Drop Off Point /Time		Pick Up Point / Time	
STEN		O-998	9/30	Richard Brown		1	Camp Nelson 0600		Camp Nelson 2100	
ENG6 E694		E-406	9/30	Willie McDermitt		2	Camp Nelson 0600		Camp Nelson 2100	
ENG3 E391		E-407	9/30	Curtis Gibson		3	Camp Nelson 0600		Camp Nelson 2100	
DOZ2 Corothers		E-405	9/30	Buck Corothers		4	Camp Nelson 0600		Camp Nelson 2100	
DOZ2 Mtn. Landscaping		E-413	9/30	Shane Edmonds		2	Camp Nelson 0600		Camp Nelson 2100	
EMPF		O-1007	10/2	Dean Carpenter		1	Camp Nelson 0600		Camp Nelson 2100	
EMTF		O-935	9/28	Tim Higeons		1	Camp Nelson 0600		Camp Nelson 2100	
REAF		O-1023	10/2	Krystal Kissinger		1	Camp Nelson 0600		Camp Nelson 2100	
Work Assignments										
<p><b>Task:</b> Prep the Crawford Road east to the 107 Road. Develop a firing plan focused on limiting fire effects and be prepared to implement to prevent the negative impacts of high intensity fire. Coordinate with Tule River Fire personnel on any line construction on reservation ground. Coordinate with DD to connect the Black Mtn Ridge with the Cow Mountain FCR.</p> <p><b>Purpose:</b> Protect the municipal water shed and other important tribal values from high intensity fire.</p> <p><b>End State:</b> Values at risk are not negatively impacted by high intensity fire or heavy handed suppression action.</p>										
Special Instructions										
<ul style="list-style-type: none"> <li>Personnel to notify DIVS of potentially sensitive cultural materials.</li> <li>Castle Ambulance 3 staged at Whitsett Base Camp. Castle Ambulance 2 staged at Blackrock Ranger Station. REMS available to all divisions.</li> <li>Prioritization of all control or containment actions taken during the operational period in this Division will be at the discretion of the DIVS. Actions may have to be taken by the DIVS that are not enumerated in today's IAP. These actions would be a result of a significant change in actual or expected fire behavior over and above that anticipated at the time the IAP was prepared. These actions will be coordinated with and approved by the OSC whenever possible.</li> </ul>										
Division/Group Communication Summary										
Function	Channel	Frequency RX	Frequency TX	TONE RX	TONE TX	Function	Channel	Frequency RX	Frequency TX	
Command	3	172.5500	162.1875	151.4	151.4	A/G TAC	13	172.3500	172.3500	
Command	4	170.1375	164.3875	151.4	151.4	A/G CMD	14	169.1500	169.1500	
NIFT T5	7	166.7250	166.7250	151.4	151.4					
Prepared by Faith Ann Heinsch – RESL (t)		Approved By Robin Jermyn				Date 9/21/2020			Time 1800	

DIVISION ASSIGNMENT LIST			Branch		Division/Group				
Incident Name			II		YANKEE				
EAST CASTLE ZONE SQF COMPLEX			Operational Period						
			09/22/2020 to 9/23/2020		Time: 0600-0600				
Operations Personnel									
Operations Chief	Brent Olson, Scott Schrenk, Andy Huntsberger (t)		Branch Director		Ryan Butler 406-250-0375				
Air Operations	Dennis Morton, John McKee, Dan Sepulveda		Division/Group Supervisor		Trevor Unsworth 406-544-7562				
Safety Officer	Dan Cassidy, Gerald Vickers								
Resources Assigned This Period									
Strike Team/Task Force/ Resource Designator	Req#	Last Shift	Leader	# Persons	Drop Off Point /Time	Pick Up Point / Time			
DOZ2	E-5	10/5		1	Whitsett Base 0600	Whitsett Base 2100			
REAF	O-1053	10/4	Chris Engelhardt	1	Whitsett Base 0600	Whitsett Base 2100			
REAF	O-1052	10/5	Lauren Pfund	1	Whitsett Base 0600	Whitsett Base 2100			
<b>Work Assignments</b>									
<b>Task:</b> Construct dozer line from road 107 west to Slate Mountain. Coordinate with adjacent division supervisors. Support point protection as needed and requested.									
<b>Purpose:</b> Keep fire north of proposed indirect line.									
<b>End State:</b> Impacts to local communities, infrastructure, and natural resources was kept to a minimum.									
<b>Special Instructions</b>									
<ul style="list-style-type: none"> <li>Personnel to notify DIVS of potentially sensitive cultural materials.</li> <li>Castle Ambulance 3 staged at Whitsett Base Camp. Castle Ambulance 2 staged at Blackrock Ranger Station. REMS available to all divisions.</li> <li>Crews be prepared to spike.</li> <li>Prioritization of all control or containment actions taken during the operational period in this Division will be at the discretion of the DIVS. Actions may have to be taken by the DIVS that are not enumerated in today's IAP. These actions would be a result of a significant change in actual or expected fire behavior over and above that anticipated at the time the IAP was prepared. These actions will be coordinated with and approved by the OSC whenever possible</li> </ul>									
<b>Division/Group Communication Summary</b>									
<b>Function</b>	Channel	Frequency RX	Frequency TX	TONE RX	TONE TX	<b>Function</b>	Channel	Frequency RX	Frequency TX
Command	1	170.0000	166.6750	151.4	151.4	A/G TAC	13	172.3500	172.3500
NIFC T7	9	168.2500	168.2500	151.4	151.4	A/G CMD	14	169.1500	169.1500
Prepared by		Approved By			Date		Time		
Faith Ann Heinsch – RESL (t)		Robin Jermyn - PSC			9/21/2020		1800		



DIVISION ASSIGNMENT LIST				Branch		Division/Group				
Incident Name				NIGHT		STRUCTURE				
EAST CASTLE ZONE SQF COMPLEX				Operational Period						
				Date: 9/22/2020 to 9/23/2020				Time: 0600-0600		
Operations Personnel										
Operations Chief		Andy James (t)			Branch Director					
Safety Officer		Dan Cassidy, Gerald Vickers			Division/Group Supervisor			Bryan Duffy 559-731-8676		
Resources Assigned This Period										
Strike Team/Task Force/ Resource Designator		Req#	Last Shift	Leader		# Persons	Drop Off Point /Time		Pick Up Point / Time	
S/T 5809C ENG3		E-241	9/25	Jason Elizondo		16	Camp Nelson 1800		Camp Nelson 0900	
SOF2		O-918	9/29	Jeff Pilotto		1	Camp Nelson 1800		Camp Nelson 0900	
<b>Work Assignments</b>										
<p><b>Task:</b> Provide perimeter control support and structure defense for Camp Nelson, Pierpoint, Cedar Slope, Rogers Camp, Mountain Aire, Coy Flat and Ponderosa when conditions allow. Provide mitigation and reasonable protection for nationally significant natural resources to the extent possible while maintaining firefighter safety. Assist night divisions as directed by Night Operations.</p> <p><b>Purpose:</b> Protect values at risk from spreading fire by supporting perimeter control operations.</p> <p><b>End State:</b> Values at risk and communities are defended to the extent possible while maintaining firefighter safety as our highest priority.</p>										
<b>Special Instructions</b>										
<ul style="list-style-type: none"> <li>Personnel to notify DIVS of potentially sensitive cultural materials.</li> <li>Castle Ambulance 3 staged at Whitsett Base Camp. Castle Ambulance 2 staged at Blackrock Ranger Station. REMS available to all divisions. Medical resources will be shared between Night and Swing shifts.</li> <li>Prioritization of all control or containment actions taken during the operational period in this Division will be at the discretion of the DIVS. Actions may have to be taken by the DIVS that are not enumerated in today's IAP. These actions would be a result of a significant change in actual or expected fire behavior over and above that anticipated at the time the IAP was prepared. These actions will be coordinated with and approved by the OSC whenever possible.</li> </ul>										
<b>Division/Group Communication Summary</b>										
<b>Function</b>		Channel	Frequency RX	Frequency TX	TONE RX	TONE TX	<b>Function</b>	Channel	Frequency RX	Frequency TX
COMMAND		See 205					A/G TAC	13	172.3500	172.3500
NIFC T1		5	168.0500	168.0500	151.4	151.4	A/G CMD	14	169.1500	169.1500
Prepared by			Approved By				Date		Time	
Faith Ann Heinsch – RESL (t)			Robin Jermyn - PSC				9/21/2020		1300	





# ASSIGNMENT LIST (ICS 204 WF)

CONTROLLED UNCLASSIFIED  
INFORMATION//BASIC

<b>1. Incident Name:</b>	<b>2. Operational Period:</b>	<b>3. Branch</b>	<b>Division</b>
<b>WEST CASTLE ZONE SQF COMPLEX</b>	Date From: 09/22/20     Date To: 09/23/20 Time From: 0700     Time To: 0700	<b>XXI</b>	<b>DD</b>

<b>4. Operations Personnel:</b>		Page 1 of 1	Delta-Delta
Operations Section Chief: <b>S. Corn</b>	Night Ops: <b>T. Ernst</b>		
Branch Director: <b>M. Martinez (12)</b>	Branch Safety:		
Division/Group Supervisor: <b>J. Cazier (T) (12)</b>	Air Attack:		

5. Resources Assigned:		** Resources Below in Bold are 12 Hour **						
Resource Identifier	ALS	LWD	Leader	Personnel	Request #	Hours	Reporting Location	
<b>STL RRU 9319L</b>			<b>A. Bennett</b>	<b>5</b>	<b>E-30174</b>	<b>0700-1900</b>	<b>ICP</b>	
DOZ PVT E-30120			P. Van Gaale	2	E-30120	0700-0700	ICP	
<b>DOZ PVT E-30125</b>			<b>R. Dominikus</b>	<b>1</b>	<b>E-30125</b>	<b>0700-1900</b>	<b>ICP</b>	
<b>FALM O-30225</b>			<b>J. Turpin</b>	<b>2</b>	<b>O-30225</b>	<b>0700-1900</b>	<b>ICP</b>	

**6. Work Assignments:**  
 Construct dozer lines.  
 Construct and improve handline.  
 Structure defense and perimeter control.  
 Identify and triage structures.

**7. Special Instructions:**  
 DIVS coordinate with assigned READ to identify and avoid sensitive cultural sites where possible.

8. Communications							
Name	Ch	Function	Rx Freq	Rx Tone	Tx Freq	Tx Tone	Notes
CDF C1	1	COMMAND	151.3550N	103.5 (T8)	159.3000N	151.4 (T14)	BLUE RIDGE
CDF C11	2	COMMAND	151.1675N	103.5 (T8)	159.3975N	151.4 (T14)	CASE MTN (NORTH)
R5 T5	6	TACTICAL	167.1125N	151.4 (T14)	167.1125N	151.4 (T14)	BRANCH 21
A/G TAC W	13	A/G TAC	168.1625N		168.1625N		
CALCORD	15	MEDICAL	156.0750N	156.7 (T6)	156.0750N	156.7 (T6)	EMERGENCY COORDINATIO
GUARD 21	16	EMERGENCY	168.6250N		168.6250N	110.9 (T1)	

<b>9. Prepared by: Name:</b>	Josh Anderson	RESL	Signature:
<b>ICS 204</b>	Date/Time: 9/21/2020	2200	Personnel Count: 10

# ASSIGNMENT LIST (ICS 204 WF)

CONTROLLED UNCLASSIFIED  
INFORMATION//BASIC

<b>1. Incident Name:</b>	<b>2. Operational Period:</b>	<b>3. Branch</b>	<b>Division</b>
<b>WEST CASTLE ZONE SQF COMPLEX</b>	Date From: 09/22/20      Date To: 09/23/20 Time From: 0700              Time To: 0700	<b>XXI</b>	<b>MM</b>

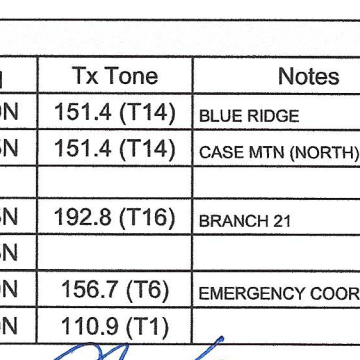
<b>4. Operations Personnel:</b>		Page 1 of 1	Mike-Mike
Operations Section Chief: <b>S. Corn</b>	Night Ops: <b>T. Ernst</b>		
Branch Director: <b>M. Martinez (12)</b>	Branch Safety:		
Division/Group Supervisor: <b>A. Estabrook (T) (12)</b>	Air Attack:		

5. Resources Assigned:	** Resources Below in Bold are 12 Hour **						
Resource Identifier	ALS	LWD	Leader	Personnel	Request #	Hours	Reporting Location
STF MVU 9336F			J. Clays	<b>12</b>	E-30144	0700-0700	ICP
<b>CRW KRN Crew 11</b>			<b>M. Henry</b>	22	<b>C-30026</b>	<b>0700-1900</b>	<b>ICP</b>
DOZ TUU 4143			K. Mittel	2	E-30181	0700-0700	ICP
DOZ PVT E-30182			J. Kurz	<b>2</b>	E-30182	0700-0700	ICP
W/T PVT E-30137			B. Rodgers	<b>2</b>	E-30137	0700-0700	ICP
<b>W/T PVT E-30139</b>			<b>R. Straley</b>	<b>1</b>	<b>E-30139</b>	<b>0700-1900</b>	<b>ICP</b>
<b>W/T PVT E-30226</b>			<b>E. Lovato</b>	<b>1</b>	<b>E-30226</b>	<b>0700-1900</b>	<b>ICP</b>
<b>HEQB BRAZAEAL</b>			<b>S. Braziel</b>	<b>1</b>	<b>O-30234</b>	<b>0700-1900</b>	<b>ICP</b>

**6. Work Assignments:**  
 Mop up 100'.  
 Construct and improve dozer and handline.  
 Structure defense and perimeter control.  
 Identify and triage structures.

**7. Special Instructions:**  
 DIVS coordinate with assigned READ to identify and avoid sensitive cultural sites where possible.

8. Communications							
Name	Ch	Function	Rx Freq	Rx Tone	Tx Freq	Tx Tone	Notes
CDF C1	1	COMMAND	151.3550N	103.5 (T8)	159.3000N	151.4 (T14)	BLUE RIDGE
CDF C11	2	COMMAND	151.1675N	103.5 (T8)	159.3975N	151.4 (T14)	CASE MTN (NORTH)
CDF T25	7	TACTICAL	159.2775N	192.8 (T16)	159.2775N	192.8 (T16)	BRANCH 21
A/G TAC W	13	A/G TAC	168.1625N		168.1625N		
CALCORD	15	MEDICAL	156.0750N	156.7 (T6)	156.0750N	156.7 (T6)	EMERGENCY COORDINATIO
GUARD 21	16	EMERGENCY	168.6250N		168.6250N	110.9 (T1)	

**9. Prepared by: Name:** Josh Anderson      RESL      Signature: 

**ICS 204**      Date/Time: 9/21/2020 2200      Personnel Count: 43

# ASSIGNMENT LIST (ICS 204 WF)

CONTROLLED UNCLASSIFIED  
INFORMATION//BASIC

<b>1. Incident Name:</b> <b>WEST CASTLE ZONE SQF COMPLEX</b>	<b>2. Operational Period:</b> Date From: 09/22/20    Date To: 09/23/20 Time From: 0700    Time To: 0700	<b>3. Branch</b> <b>Division</b>  <b>XXV</b> <b>TT</b>
---	---	--

<b>4. Operations Personnel:</b>		Page 1 of 1    Tango-Tango
Operations Section Chief: <b>S. Corn</b>	Night Ops: <b>T. Ernst</b>	
Branch Director: <b>D. Esades (12)</b>	Branch Safety:	
Division/Group Supervisor: <b>R. Sonsteng (12) / C. Usher (T) (12) / T. Attebury</b>	Air Attack:	

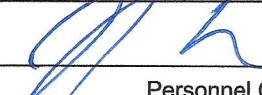
<b>5. Resources Assigned:</b>		** Resources Below in Bold are 12 Hour **					
Resource Identifier	ALS	LWD	Leader	Personnel	Request #	Hours	Reporting Location
<b>STC SLU 9340C</b>			<b>T. Swanson</b>	<b>16</b>	<b>E-30157</b>	<b>0700-1900</b>	<b>ICP</b>
<b>ENG TLC RESCUE 14</b>			<b>D. Villavicencio</b>	<b>3</b>	<b>E-30207</b>	<b>1900-0700</b>	<b>ICP</b>
STG RRU 9316G (CDCR)			C. Wright	33	E-30028	0700-0700	ICP
<b>CRW TLC OAK VALLEY</b>			<b>R. Torres</b>	<b>19</b>	<b>C-30023</b>	<b>0700-1900</b>	<b>ICP</b>
<b>CRW TUU Crew 1</b>			<b>D.Abbott</b>	<b>16</b>	<b>C-30027</b>	<b>0700-1900</b>	<b>ICP</b>
<b>CRW TUU Crew 2</b>			<b>R. High</b>	<b>16</b>	<b>C-30025</b>	<b>0700-1900</b>	<b>ICP</b>
<b>CRW SLU Fuels 3449</b>			<b>L. Elliot</b>	<b>8</b>	<b>C-30022</b>	<b>0700-1900</b>	<b>ICP</b>
<b>CRW TCU Fuels 4449</b>			<b>T. Pittman</b>	<b>7</b>	<b>C-30024</b>	<b>0700-1900</b>	<b>ICP</b>
DOZ PVT E-30116			C. Hauber	2	E-30116	0700-0700	ICP
DOZ PVT E-30183			J. Hall	2	E-30183	0700-0700	ICP
W/T PVT E-30178			B. Belmares	2	E-30178	0700-0700	ICP
W/T PVT E-30180			M. Lane	2	E-30180	0700-0700	ICP
<b>MAS TCU Fuels Crew</b>			<b>L. Minor</b>	<b>1</b>	<b>E-30162</b>	<b>0700-1900</b>	<b>ICP</b>
<b>MAS SLU Fuels Crew</b>			<b>M. Hider</b>	<b>1</b>	<b>E-30163</b>	<b>0700-1900</b>	<b>ICP</b>
<b>FALM O-30226</b>			<b>T. Janowiak</b>	<b>2</b>	<b>O-30226</b>	<b>0700-1900</b>	<b>ICP</b>
<b>FEMT JONES</b>			<b>C. Jones</b>	<b>1</b>	<b>O-30065</b>	<b>0700-1900</b>	<b>ICP</b>
<b>FEMP SMITH</b>			<b>J. Smith</b>	<b>1</b>	<b>O-30394</b>	<b>0700-1900</b>	<b>ICP</b>

**6. Work Assignments:**  
 Construct and hold control lines for firing.  
 Hold the current fire on control lines.  
 Prepare structures along South Fork Road.

**7. Special Instructions:**  
 DIVS coordinate with assigned READ to identify and avoid sensitive cultural sites where possible.  
 \*\* T. Attebury is assigned as Firing Group Supervisor.

**8. Communications**

Name	Ch	Function	Rx Freq	Rx Tone	Tx Freq	Tx Tone	Notes
CDF C1	1	COMMAND	151.3550N	103.5 (T8)	159.3000N	151.4 (T14)	BLUE RIDGE
CDF C11	2	COMMAND	151.1675N	103.5 (T8)	159.3975N	151.4 (T14)	CASE MTN (NORTH)
CDF T28	9	TACTICAL	151.1825N	192.8 (T16)	151.1825N	192.8 (T16)	BRANCH 25
A/G TAC W	13	A/G TAC	168.1625N		168.1625N		
CALCORD	15	MEDICAL	156.0750N	156.7 (T6)	156.0750N	156.7 (T6)	EMERGENCY COORDINATI
GUARD 21	16	EMERGENCY	168.6250N		168.6250N	110.9 (T1)	

**9. Prepared by: Name:** Josh Anderson    RESL    Signature: 

**ICS 204**    Date/Time: 9/21/2020 2200    Personnel Count: 132

# ASSIGNMENT LIST (ICS 204 WF)

CONTROLLED UNCLASSIFIED  
INFORMATION//BASIC

<b>1. Incident Name:</b> <b>WEST CASTLE ZONE SQF COMPLEX</b>	<b>2. Operational Period:</b> Date From: 09/22/20    Date To: 09/23/20 Time From: 0700    Time To: 0700	<b>3. Branch</b> <b>Division</b> <b>XXV</b> <b>PP</b>
---	---	--


<b>4. Operations Personnel:</b>		Page 1 of 1    Papa-Papa
Operations Section Chief: <b>S. Corn</b>	Night Ops: <b>T. Ernst</b>	
Branch Director: <b>D. Esades (12)</b>	Branch Safety:	
Division/Group Supervisor: <b>M. Drum (T) (12)</b>	Air Attack:	

<b>5. Resources Assigned:</b>		** Resources Below in Bold are 12 Hour **					
Resource Identifier	ALS	LWD	Leader	Personnel	Request #	Hours	Reporting Location
ENG TUU 4184			C. Ray	4	E-30171	0700-0700	ICP
ENG TUU 4190			N. Perricelli	4	E-30172	0700-0700	ICP
ENG TUU 4161			W. Whitendale	4	E-30173	0700-0700	ICP
STL BDU 9353L			M. Breese	9	E-30175	0700-0700	ICP
<b>DOZ PVT E-30118</b>			<b>M. Reichenberger</b>	<b>1</b>	<b>E-30118</b>	<b>0700-1900</b>	<b>ICP</b>
DOZ PVT E-30127			R. Voris	2	E-30127	0700-0700	ICP
DOZ PVT E-30150			C. Fry	2	E-30150	0700-0700	ICP
DOZ PVT E-30153			G. Van Gassbeek	2	E-30153	0700-0700	ICP
<b>DOZ PVT E-30123</b>			<b>L. Moosios</b>	<b>1</b>	<b>E-30123</b>	<b>0700-1900</b>	<b>DP 45</b>
DOZ PVT E-30124			W. Brown	2	E-30124	0700-0700	DP 45
<b>W/T PVT E-30135</b>			<b>R. Reyes</b>	<b>1</b>	<b>E-30135</b>	<b>0700-1900</b>	<b>ICP</b>
W/T PVT E-30136			D. Dixon	2	E-30136	0700-0700	ICP
W/T PVT E-30177			H. Lang	2	E-30177	0700-0700	ICP
HEQB GONZALEZ			M. Gonzalez	1	O-30235	0700-0700	ICP
HEQB PRANDINI			A. Prandini	1	O-30220	0700-0700	ICP
<b>FEMP OZBIRN</b>			<b>S. Ozbirn</b>	<b>1</b>	<b>O-30210</b>	<b>0700-1900</b>	<b>ICP</b>
<b>FEMT BANKS</b>			<b>M. Banks</b>	<b>1</b>	<b>O-30067</b>	<b>0700-1900</b>	<b>ICP</b>

**6. Work Assignments:**  
 Construct and hold control lines for firing.  
 Hold the current fire on control lines.  
 Prepare structures along Blue Ridge Road.  
 Conduct and hold firing operations.

**7. Special Instructions:**  
 DIVS coordinate with assigned READ to identify and avoid sensitive cultural sites where possible.

<b>8. Communications</b>							
Name	Ch	Function	Rx Freq	Rx Tone	Tx Freq	Tx Tone	Notes
CDF C1	1	COMMAND	151.3550N	103.5 (T8)	159.3000N	151.4 (T14)	BLUE RIDGE
CDF C11	2	COMMAND	151.1675N	103.5 (T8)	159.3975N	151.4 (T14)	CASE MTN (NORTH)
CDF T26	8	TACTICAL	159.2925N	192.8 (T16)	159.2925N	192.8 (T16)	BRANCH 25
A/G TAC W	13	A/G TAC	168.1625N		168.1625N		
CALCORD	15	MEDICAL	156.0750N	156.7 (T6)	156.0750N	156.7 (T6)	EMERGENCY COORDINATIO
GUARD 21	16	EMERGENCY	168.6250N		168.6250N	110.9 (T1)	

**9. Prepared by: Name:** Josh Anderson    RESL    Signature: 

**ICS 204**    Date/Time: 9/21/2020 2200    Personnel Count: 40

# ASSIGNMENT LIST (ICS 204 WF)

CONTROLLED UNCLASSIFIED  
INFORMATION//BASIC

<b>1. Incident Name:</b>	<b>2. Operational Period:</b>	<b>3. Branch</b>	<b>Division</b>
<b>WEST CASTLE ZONE SQF COMPLEX</b>	Date From: 09/22/20      Date To: 09/23/20 Time From: 0700              Time To: 0700	<b>XXIX</b>	<b>WW</b>

<b>4. Operations Personnel:</b>		<b>Page 1 of 1</b>	<b>Whiskey-Whiskey</b>
Operations Section Chief: <b>S. Corn</b>	Night Ops: <b>T. Ernst</b>		
Branch Director:	Branch Safety:		
Division/Group Supervisor: <b>B. Willson (12)</b>	Air Attack:		

<b>5. Resources Assigned:</b>		** Resources Below in Bold are 12 Hour **					
Resource Identifier	ALS	LWD	Leader	Personnel	Request #	Hours	Reporting Location
DOZ TUU 4141			D. Peterson	2	E-30176	0700-0700	ICP
DOZ PVT E-30119			L. Gill	2	E-30119	0700-0700	ICP
<b>DOZ PVT E-30155</b>			<b>M. Hooper</b>	<b>1</b>	<b>E-30155</b>	<b>0700-1900</b>	<b>ICP</b>
<b>W/T PVT E-30138</b>			<b>N. Elliott</b>	<b>1</b>	<b>E-30138</b>	<b>0700-1900</b>	<b>ICP</b>
<b>W/T PVT E-30179</b>			<b>R. Ertl</b>	<b>1</b>	<b>E-30179</b>	<b>0700-1900</b>	<b>ICP</b>
<b>REAF WINGATE</b>			<b>E. Wingate</b>	<b>1</b>	<b>O-30276</b>	<b>0700-1900</b>	<b>ICP</b>
<b>REAF GIRADO</b>			<b>H. Girado</b>	<b>1</b>	<b>O-30275</b>	<b>0700-1900</b>	<b>ICP</b>

**6. Work Assignments:**  
 Structure defense of Case Mountain Repeater Site.  
 Monitor progress of fire spread through Bureau of Land Management.  
 Scouting and constructing indirect dozer line.  
 Structure Defense.

**7. Special Instructions:**

<b>8. Communications</b>							
Name	Ch	Function	Rx Freq	Rx Tone	Tx Freq	Tx Tone	Notes
CDF C1	1	COMMAND	151.3550N	103.5 (T8)	159.3000N	151.4 (T14)	BLUE RIDGE
CDF C11	2	COMMAND	151.1675N	103.5 (T8)	159.3975N	151.4 (T14)	CASE MTN (NORTH)
CDF T29	10	TACTICAL	151.3475N	192.8 (T16)	151.3475N	192.8 (T16)	BRANCH 29
A/G CMD	14	A/G CMD	169.1500N		169.1500N		OVERHEAD USE ONLY
CALCORD	15	MEDICAL	156.0750N	156.7 (T6)	156.0750N	156.7 (T6)	EMERGENCY COORDINATIO
GUARD 21	16	EMERGENCY	168.6250N		168.6250N	110.9 (T1)	

<b>9. Prepared by: Name:</b>	Josh Anderson	RESL	Signature:
<b>ICS 204</b>	Date/Time: 9/21/2020	2200	Personnel Count: 9



# ASSIGNMENT LIST (ICS 204 WF)

CONTROLLED UNCLASSIFIED  
INFORMATION//BASIC

<b>1. Incident Name:</b> <b>WEST CASTLE ZONE SQF COMPLEX</b>	<b>2. Operational Period:</b> Date From: 09/22/20      Date To: 09/23/20 Time From: 0700              Time To: 0700	<b>3. Branch</b> <b>Staging</b> <b>ICP</b>  <b>Page 1 of 1</b>
---	---	---


<b>4. Operations Personnel:</b>	
Operations Section Chief: <b>S. Corn</b>	Night Ops: <b>T. Ernst</b>
Branch Director:	Branch Safety:
Division/Group Supervisor:	Air Attack:

<b>5. Resources Assigned:</b>							
** Resources Below in Bold are 12 Hour **							
Resource Identifier	ALS	LWD	Leader	Personnel	Request #	Hours	Reporting Location
<b>DOZ PVT E-30126</b>			<b>B. Rowley</b>	<b>1</b>	<b>E-30126</b>	<b>0700-1900</b>	<b>ICP</b>
<b>DOZ PVT E-30128</b>			<b>D. Elliot</b>	<b>1</b>	<b>E-30128</b>	<b>0700-1900</b>	<b>ICP</b>

<b>6. Work Assignments:</b> Maintain 3 minute response time.
---

<b>7. Special Instructions:</b>
---------------------------------

<b>8. Communications</b>							
Name	Ch	Function	Rx Freq	Rx Tone	Tx Freq	Tx Tone	Notes
CDF C1	1	COMMAND	151.3550N	103.5 (T8)	159.3000N	151.4 (T14)	BLUE RIDGE
CDF C11	2	COMMAND	151.1675N	103.5 (T8)	159.3975N	151.4 (T14)	CASE MTN (NORTH)
		#N/A	#N/A	#N/A	#N/A	#N/A	#N/A
A/G CMD	14	A/G CMD	169.1500N		169.1500N		OVERHEAD USE ONLY
CALCORD	15	MEDICAL	156.0750N	156.7 (T6)	156.0750N	156.7 (T6)	EMERGENCY COORDINATIO
GUARD 21	16	EMERGENCY	168.6250N		168.6250N	110.9 (T1)	

<b>9. Prepared by: Name:</b> Josh Anderson                      RESL	Signature: 
<b>ICS 204</b>	Date/Time: 9/21/2020 2200                      Personnel Count: 2





10. TASK/ MISSION/ ASSIGNMENT (Type/ function includes: Air Tactical, Retardant, Recon, Personnel Transport, Bucket Operations, SAR, etc.)					
TYPE/FUNCTION	PRIORITY	NAME OF PERSONNEL OR CARGO (If applicable) or instructions for tactical aircraft	MISSION START	FLY FROM	FLY TO
ATGS		Provide continuous coverage over the fire as smoke and weather permits.	TBD	PVT	Fire
Initial Attack		Initial Attack assistance as requested.	TBD	PVT/Peppermint	IA
Medevac		<b>**See Medical Plan in IAP – Review during Division Breakouts**</b>	TBD		Fire
Water Drops		As needed and approved by OPS, order through ATGS/HLCO	TBD	PVT	Fire
Recon		Fire reconnaissance as requested.	TBD	PVT	Fire
PSD		As needed and approved by OPS	TBD	PVT	Fire
OTHER		(Back Haul, Re-Supply, Crew Movement) Place all orders through communications	TBD	Peppermint/ BlackRock	Fire

## FOR COMPLETE LIST SEE AIR OPERATIONS MAP

Helibase, Dip Sites, Pick Up Sites, etc.			Helibase, Dip Sites, Pick Up Sites, etc.		
Porterville HB	36 01.427' N 118 4.112' W	500'	Lookout IP, Enter 10000'	36 3.89' N, 118 27.51' W	
Peppermint HB	36 4.355' N 118 32.500' W	7500'	Saddle Check	36 10.88' N 118 28.59' W	
H-3 Black Rock T2	36 5.609' N, 118 15.666' W	8100'	Ridge Check	36 8.55' N 118 26.72' W	
Ranch Helispot	36 09.053' N 118 48.063' W	1200'	Needle Check	36 5.89' N 118 27.59' W	
			Walter Check	36 15.43' N 118 36.11' W	
H-1 T2	36 9.852' N, 118 26.985' W	6600'			
H-2 T2	36 5.838' N, 118 26.806' W	6000'			
H-12 Camp Nelson	36 08.368' N 118 36.917' W	4800'			
H-30	36 20.809' N 118 24.512' W	6500'			
(MRB) Camp Nelson	36 08.402' N, 118 36.854' W	4800'			
Freeman "NR"	36 6.875' N, 118 27.551' W	5100'			
Beach Dip (X, U, N Only)	36 6.931' N, 118 17.824' W	7700'	C31	36 18.077' N 118 27.340' W 10800'	
Quaking Aspen Dip T2, 3 ONLY!	36 07.285' N, 118 32.815' W	7000'	C4	36 10.909' N 118 35.882' W 9100'	
			C11	36 0.630' N 118 23.448' W 9900'	

Visibility Limitations VFR Flight Helicopters

Day 1/2 statute mile

Clear of clouds

Flights above ground level	Flight Permitted in Winds Less than / Maximum Gust Spread		
	Type 1 Helicopters	Type 2 Helicopters	Type 3 Helicopters
More than 500' AGL	<50kts / Gusts: N/A	<50kts / Gusts: N/A	<50kts / Gusts: N/A
Less than 500' AGL	<40kts / Max Gust Spread: 15kts	<40kts / Max Gust Spread: 15kts	<30kts / Max Gust Spread: 15kts

"In the beginning of a change, the patriot is a scarce man; brave, hated, and scorned. But when his cause succeeds, however, the timid join him, for then it costs nothing to be a patriot."

-Mark Twain

Approved by: /s/ *Dennis A. Morton*, AOB/D

INCIDENT RADIO COMMUNICATIONS PLAN			Incident Name EAST CASTLE ZONE SQF COMPLEX			Date/Time Prepared 9/21/2020			Operational Period Date/Time 9/22/20 0600 - 9/23/20 0600		
Ch #	Function	Channel Name/Trunked Radio System Talkgroup	Assignment	RX Freq N or W	RX Tone/NAC	TX Freq N or W	Tx Tone/NAC	Mode A, D or M	Remarks		
1	CMD REPEATER	NIFC C4	DIV A/B/Y/Z	170.0000	151.4	166.6750	151.4	A	JORDON PEAK (TONE 14)		
2	CMD REPEATER	NIFC C11	DIV BC L	170.6875	151.4	166.5750	151.4	A	SHERMAN PEAK (TONE 14)		
3	CMD REPEATER	NIFC C31	DIV BC L / W	172.5500	151.4	162.1875	151.4	A	COYOTE PEAK (TONE 14)		
4	CMD REPEATER	NIFC C60	W	170.1375	151.4	164.3875	151.4	A	MULE PEAK (TONE 14)		
5	TACTICAL CHNL	NIFC T1	DIV A / PONDO	168.0500	151.4	168.0500	151.4	A	SQF TACTICAL (TONE 14)		
6	TACTICAL CHNL	NIFC T3	DIV B	168.6000	151.4	168.6000	151.4	A	SQF TACTICAL (TONE 14)		
7	TACTICAL CHNL	NIFC T5	DIV W	166.7250	151.4	166.7250	151.4	A	SQF TACTICAL (TONE 14)		
8	TACTICAL CHNL	NIFC T6	UNASSIGNED	166.7750	151.4	166.7750	151.4	A	SQF TACTICAL (TONE 14)		
9	TACTICAL CHNL	NIFC T7	BC L / Y / Z	168.2500	151.4	168.2500	151.4	A	SQF TACTICAL (TONE 14)		
10	TACTICAL CHNL	R5 T5	CAL FIRE TAC	167.1125	151.4	167.1125	151.4	A	MUTUAL TAC FREQ CAL FIRE		
11	TACTICAL CHNL	R5 T6	NELSON	168.2375	151.4	168.2375	151.4	A	STRUCTURE TAC (TONE 14)		
12	TACTICAL CHNL	VFIRE 25	UNASSIGNED	154.2875	156.7	154.2875	156.7	A	STRUCTURE TAC (TONE 6)		
13	AIR TO GROUND	A/G TAC	A/G TAC	172.3500		172.3500		A	A/G TAC		
14	AIR TO GROUND	A/G CMD	A/G CMD	169.1500		169.1500		A	A/G CMD OVERHEAD ONLY		
15	TACTICAL CHNL	CALCORD	MEDEVAC	156.0750	156.7	156.0750	156.7	A	CALCORD MEDEVAC (T 6)		
16	AIR GUARD	GRD 20	EMCY ONLY	168.6250		168.6250	110.9	A	AIR GUARD		
Prepared by (Communications Unit) COMM UNIT 949.330.9979 / COM1 DUSTIN SENE 406-581-9816					Incident Location SEQUOIA NF County _____ State CA Latitude _____ N Longitude 3-7-77 W						

The convention calls for frequency lists to show four digits after the decimal place, followed by either an "N" or a "W", depending on whether the frequency is narrow or wide band. Mode refers to either "A" or "D" indicating analog or digital (e.g. Project 25) or "M" indicating mixed mode. All channels are shown as if programmed in a control station, mobile or portable radio. Repeater and base stations must be programmed with the Rx and Tx reversed.

# MEDICAL PLAN (ICS 206 WF)

Controlled Unclassified Information//Basic

1. Incident/Project Name		2. Operational Period						
<b>EAST CASTLE ZONE SQF COMPLEX</b>		Date/Time 09/22/20 0600hrs-09/23/20 0600hrs						
3. Ambulance Services								
Name	Complete Address	Phone & EMS Frequency		Advanced Life Support (ALS)		Yes	No	
Imperial Ambulance (west side)	28551 Hwy 190, Porterville, CA	559-687-3309		<input checked="" type="checkbox"/>			<input type="checkbox"/>	
Hall Ambulance (east side)	1001 21st St, Bakersfield	661-327-4111		<input checked="" type="checkbox"/>			<input type="checkbox"/>	
Liberty Ambulance (Castle Ambulance 4)	ICP (Kern Valley High School)	Command frequency		<input checked="" type="checkbox"/>			<input type="checkbox"/>	
4. Air Ambulance Services								
Name	Phone	Type of Aircraft & Capability						
<b>**Kern County FD H407 Visalia</b>	657-464-7830	Incident Primary Air Rescue, Bell 205, ALS, 24/7 Hoist						
<b>Kern County FD H408</b>	657-305-5433	Air Rescue, Bell 205, ALS, 24/7 Hoist						
<b>Skylife</b>	800-305-5433	ALS, No Hoist, requires 100x100 LZ						
<b>CHP H40 (Fresno)</b>	559-262-0400	Air ambulance, ALS 24/7, DAY HOIST ONLY, NIGHT STAFFING ON CALL AFTER 1800 HRS						
<b>US COAST GUARD</b>	REGIONAL COMMAND CENTER 510-437-3701	AIR RESCUE, HOIST 24/7, NO IN-FLIGHT MEDICAL						
5. Hospitals								
Name Complete Address	GPS Datum – WGS 84 Coordinate Standard Degrees Decimal Minutes DD° MM.MMM' N - Lat DD° MM.MMM' W - Long		Travel Time Air Gnd		Phone	Helipad Yes No		Level of Care Facility
	Lat:	Long:	Min	Gnd		Yes	No	
<b>Kern Valley Hospital 6412 Laurel Ave Lake Isabella, CA</b>	Lat:	35 38.07'N	30 Min	2- 3Hr	760-379-2681	<input checked="" type="checkbox"/>	<input type="checkbox"/>	Emergency Room
	Long:	118 24.35W						
	VHF:							
<b>Sierra View Med Ctr 465 W Putnam Ave Porterville, CA</b>	Lat:		30 Min	2-4.5 hrs	559-784-1110	<input type="checkbox"/>	<input checked="" type="checkbox"/>	Emergency Room
	Long:							
	VHF:							
<b>Kaweah Delta Health 400 W. Mineral King Ave. Visalia, CA 93291</b>	Lat:	36 19.65'N	30 Min	2.5-5 Hr	559-624-2000	<input checked="" type="checkbox"/>	<input type="checkbox"/>	Level 2 Trauma
	Long:	119 17.67'W						
	VHF:	468.0375 PL141.3 DTMF 3211 12K lb pad limit						
<b>Kern Medical Center 1700 MT Vernon Ave.Bakersfield, CA 93306</b>	Lat:	35 22.95'N	45 min	2.5- 3.75 hr	661-326-2000	<input checked="" type="checkbox"/>	<input type="checkbox"/>	Level 2 Trauma
	Long:	118 58.182'W						
	VHF:	463.100 12K lb pad limit						
<b>Community Regional Medical Center 2823 Fresno St.Fresno, CA 93721</b>	Lat:	36 44.568'N	1 hr	3- 5.25 hr	559-459-6000 ER 559-459-4220	<input checked="" type="checkbox"/>	<input type="checkbox"/>	Level 1 Trauma/ Burn Center
	Long:	119 47.094'W						
	VHF:	123.05 key 5times for lights 22K lb pad limit						

# MEDICAL PLAN (ICS 206 WF)

Controlled Unclassified Information//Basic

1. Incident/Project Name	2. Operational Period	
6. 7. Division   Branch   Group	Area Location Capability	
<b>Ponderosa</b>	EMS Responders & Capability:	Brain Boulware, EMPF; Larry Hoqueisson, EMPF
	Equipment Available on Scene:	ALS
	Medical Emergency Channel:	Command
	ETA for Ambulance to Scene:	
	Air:	30 mins
	Ground:	2 hrs
	Approved Helispot:	Peppermint
	Lat:	36 4.355N
	Long:	118 32.500W
<b>Div B</b>	EMS Responders & Capability:	REMS
	Equipment Available on Scene:	ALS, BLS, Extraction, UTV
	Medical Emergency Channel:	Command
	ETA for Ambulance to Scene:	
	Air:	30 min
	Ground:	2 hrs
	Approved Helispot:	H 20
	Lat:	36 10.960°N
	Long:	118 29.259°W
<b>Div Z</b>	EMS Responders & Capability:	Silas Fischer, EMPF; Royce Copeman, EMPF; Ambulance 3
	Equipment Available on Scene:	ALS; 4x4 ALS ambulance
	Medical Emergency Channel:	Command
	ETA for Ambulance to Scene:	
	Air:	30 min
	Ground:	2 hrs
	Approved Helispot:	H1
	Lat:	36 9.852°N
	Long:	118 26.985°W
<b>Backcountry Lima</b>	EMS Responders & Capability:	Joshua Terry, EMPF; Castle Ambulance 2; Tommy Kavanaugh, EMPF; Matthew Heckman, EMPF;
	Equipment Available on Scene:	ALS; UTV; ALS Ambulance
	Medical Emergency Channel:	Command
	ETA for Ambulance to Scene:	
	Air:	35 mins
	Ground:	3 hrs
	Approved Helispot:	H 3
	Lat:	36 5.609°N
	Long:	118 15.666°W
<b>Div W</b>	EMS Responders & Capability:	Dean Carpenter, EMPF; Tim Higeons, EMTF
	Equipment Available on Scene:	ALS, BLS, UTV
	Medical Emergency Channel:	Command
	ETA for Ambulance to Scene:	
	Air:	30 mins
	Ground:	2 hours
	Approved Helispot:	Peppermint Helibase
	Lat:	36 4.355N
	Long:	118 32.500W
<b>Nelson</b>	EMS Responders & Capability:	Chris Inman, EMPF; Castle Ambulance 5
	Equipment Available on Scene:	ALS; BLS; 4x4 ALS ambulance
	Medical Emergency Channel:	Command
	ETA for Ambulance to Scene:	
	Air:	35 mins
	Ground:	3 hrs
	Approved Helispot:	Peppermint Helibase
	Lat:	36 4.355°N
	Long:	118 32.500°W

# MEDICAL PLAN (ICS 206 WF)

Controlled Unclassified Information//Basic

1. Incident/Project Name	2. Operational Period	
<b>Swing</b>	EMS Responders & Capability:	Chris Laponis EMPF
	Equipment Available on Scene:	ALS
	Medical Emergency Channel:	Command
	ETA for Ambulance to Scene:	
	Air:	30 mins
	Ground:	2 hrs
	Approved Helispot:	H20
	Lat:	36 10.960°N
	Long:	118 29.259°W
<b>Night Div Y/Z</b>	EMS Responders & Capability:	Steve Devincinzi; EMTF, Castle Ambulance 1
	Equipment Available on Scene:	BLS; ALS ambulance
	Medical Emergency Channel:	Command
	ETA for Ambulance to Scene:	
	Air:	30 min
	Ground:	2 hrs
	Approved Helispot:	H1
	Lat:	36 9.852°N
Long:	118 26.985°W	
Emily Ellick-Flettire-405-593-3369	09/20/2020	Dan Cassidy SOF1 406.250.4599 09/20/2020

# MEDICAL PLAN (ICS 206 WF)

Controlled Unclassified Information//Basic

## Medical Incident Report

**FOR A NON-EMERGENCY INCIDENT, WORK THROUGH CHAIN OF COMMAND TO REPORT AND TRANSPORT INJURED PERSONNEL AS NECESSARY.**

**FOR A MEDICAL EMERGENCY: IDENTIFY ON SCENE INCIDENT COMMANDER BY NAME AND POSITION AND ANNOUNCE "MEDICAL EMERGENCY" TO INITIATE RESPONSE FROM IMT COMMUNICATIONS/DISPATCH.**

**Use the following items to communicate situation to communications/dispatch.**

**1. CONTACT COMMUNICATIONS / DISPATCH** (Verify correct frequency prior to starting report)

*Ex: "Communications, Div. Alpha. Stand-by for Emergency Traffic."*

**2. INCIDENT STATUS:** Provide incident summary (including number of patients) and command structure.

*Ex: "Communications, I have a Red priority patient, unconscious, struck by a falling tree. Requesting air ambulance to Forest Road 1 at (Lat./Long.) This will be the Trout Meadow Medical, IC is TFLD Jones. EMT Smith is providing medical care."*

Severity of Emergency / Transport Priority	<input type="checkbox"/> <b>RED / PRIORITY 1 Life or limb threatening injury or illness. Evacuation need is IMMEDIATE</b> <i>Ex: Unconscious, difficulty breathing, bleeding severely, 2° – 3° burns more than 4 palm sizes, heat stroke, disoriented.</i> <input type="checkbox"/> <b>YELLOW / PRIORITY 2 Serious Injury or illness. Evacuation may be DELAYED if necessary.</b> <i>Ex: Significant trauma, unable to walk, 2° – 3° burns not more than 1-3 palm sizes.</i> <input type="checkbox"/> <b>GREEN / PRIORITY 3 Minor Injury or illness. Non-Emergency transport</b> <i>Ex: Sprains, strains, minor heat-related illness.</i>	
Nature of Injury or Illness & Mechanism of Injury		<i>Brief Summary of Injury or Illness (Ex: Unconscious, Struck by Falling Tree)</i>
Transport Request		<i>Air Ambulance / Short Haul/Hoist Ground Ambulance / Other</i>
Patient Location		<i>Descriptive Location &amp; Lat. / Long. (WGS84)</i>
Incident Name		<i>Geographic Name + "Medical" (Ex: Trout Meadow Medical)</i>
On-Scene Incident Commander		<i>Name of on-scene IC of Incident within an Incident (Ex: TFLD Jones)</i>
Patient Care		<i>Name of Care Provider (Ex: EMT Smith)</i>

**3. INITIAL PATIENT ASSESSMENT:** Complete this section for each patient as applicable (start with the most severe patient)

Patient Assessment: See IRPG PAGE 106

Treatment:

**4. TRANSPORT PLAN:**

Evacuation Location (if different): (Descriptive Location (drop point, intersection, etc.) or Lat. / Long.) Patient's ETA to Evacuation Location:

Helispot / Extraction Site Size and Hazards:

**5. ADDITIONAL RESOURCES / EQUIPMENT NEEDS:**

*Example: Paramedic/EMT, Crews, Immobilization Devices, AED, Oxygen, Trauma Bag, IV/Fluid(s), Splints, Rope rescue, Wheeled litter, HAZMAT, Extrication*

**6. COMMUNICATIONS: Identify State Air/Ground EMS Frequencies and Hospital Contacts as applicable**

Function	Channel Name/Number	Receive (RX)	Tone/NAC *	Transmit (TX)	Tone/NAC *
COMMAND					
AIR-TO-GRND					
TACTICAL					

**7. CONTINGENCY: Considerations:** If primary options fail, what actions can be implemented in conjunction with primary evacuation method? Be thinking ahead.

**8. ADDITIONAL INFORMATION:** Updates/Changes, etc.

**REMEMBER:** Confirm ETA's of resources ordered. Act according to your level of training. Be Alert. Keep Calm. Think Clearly. Act Decisively.

**MEDICAL PLAN (ICS 206 WF)**  
**Controlled Unclassified Information//Basic**  
**ASSIGNMENT-SPECIFIC MEDICAL EMERGENCY ACTION PLAN**

**Pre-Planning for today's assignment – See Page 2 IRPG**

What are the likely hazards that could cause injuries? What kind of severe injuries?		
Who is the likely in-charge DIVS or overhead for an emergency in your assigned area today? (i.e. "Division Zulu")		
Who are the Medical personnel assigned to your part of the incident? What are their capabilities?		
Other Emergency Responders: fire dept, crash rescue, ambulance?		
Communications: Command channel, Air to Ground, Medical helicopters, local rescue/medical?		
Transportation methods available	Ground vehicle, drop point, coordinates, travel route?	
	Aircraft I.D, helispot names, coordinates? Hoist capable, internal transport	
	Other available methods - contingency	
Most likely workforce for evacuation		

**Response checklist**

**Who takes charge?**

- DIVS or designated Overhead manages the overall scene and evacuation process.
- Medical personnel and emergency responders manage patients and conduct rescues.
- OPS and IC make command decisions so the emergency can be given full attention and management. They continue to manage ongoing incident operations.

**Response sequence:**

- First, secure the scene and protect responders and patients from further injury.
- Clear the Command channel for "Emergency Traffic only" if this is a critical emergency. If not, inform Communications of non-critical-emergency status and use normal communications.
- Contact closest Medical personnel and DIVS or designated Overhead for response.
- Notify Communications to initiate Accident Action Plan response.

**Information for Communications: (See Medical Incident Report, page 108, IRPG)**

- Type and extent of injuries?
- Airway or breathing problems? Serious bleeding?
- Is an EMT present or needed? Are Paramedics (Advanced Life Support) needed?
- Specific location of patients (Lat/Long, access route, DP#, helicopter Landing Zone)?
- What type of transport is needed? Helicopter medevac, hoist, ambulance or ground transport?
- Name of contact person in charge of the scene.
- Do not use names of patients at any time.
- **Medical Emergency Responders confer with Medical Unit Leader and DIVS or designated Overhead to determine if this is a critical emergency and what type of transport is needed.**





# HUMAN RESOURCE MESSAGE

*There is zero tolerance for drugs and alcohol on this fire incident.*



## Transition

We say goodbye to one team and we welcome a new one.

*Change is ever constant; but not always easy. Give yourself and others some time and encouragement.*

\*\*\*\*\*

Debby Hassel, HRSP (406) 274-7985

[hrspfire@gmail.com](mailto:hrspfire@gmail.com)

# DEMOBILIZATION IS NOW REMOTE!!

## ***Demobilization Steps:***

1. ALL accountable property checked-out from the incident must be returned (i.e. communications, supply). Items may be returned at Whitsett Base Camp or ICP.
2. Submit all finance documentation (time must be projected for travel home).
  - a. Abide by scheduled DMOB time or call Finance for an unscheduled DMOB.
  - b. Government agency resources that would like to close out their time 100% remotely should call **949-591-4123** when they are close to their DMOB date and make necessary arrangements to complete the process.
3. Scan the QR code on the front of the IAP to complete the DMOB process and start your travel home. **DO NOT LEAVE** the incident until you have confirmed with Demobilization Unit Leader at 951-235-1568. If you have questions, please call!

## EXTENSIONS & RR

- Extensions or RR's **MUST be requested by your incident supervisor** and approved by your home unit supervisor prior to being processed.
- Extensions forms can be obtained from DMOB or the plans representative onsite at Camp Whitsett.

## ***Are You a TRAINEE?***

1. Scan these codes to access the fillable *trainee* information forms. Send photo of qualification cards and task book cover to: [2020.Castle.Plans@firenet.gov](mailto:2020.Castle.Plans@firenet.gov)



Registration



Check-out

2. Call Rob at 850-688-7623 or Robin at 406-360-5936 from 0600 – 2100 daily.

# FINANCE MESSAGE

## OPTIONS FOR SUBMITTING TIME:

1. **Fillable PDF CTR/Shift Ticket:** QR code to the fillable forms are included below. If you do not have QR capabilities finance can e-mail you the forms directly.



2. **Hard Copy CTR/Shift Ticket:** Fill out a hard copy CTR, snap a picture and email/text that into finance. If you send in a picture, please make sure it is legible and includes the supervisor's signature at the bottom! Please make sure to include your phone number in the **Remarks** in case we have questions.
3. OR you may turn in your actual hard copy as usual at Whitsett Spike Camp & Troy Meadow.
  - Please try to submit time at least every other day
  - H-Pay justifications are still required on your CTRs – “H = Hazard Pay” is not sufficient

**\*\*CONTRACTED EQUIPMENT PLEASE CONTACT FINANCE IF YOU WANT TO START THE PROCESS OF AN INTERIM PAYMENT\*\***

**2020.castle.finance@firenet.gov**

Finance Main Line: **949-591-4123**

TIP:

***\*\*In order to use fillable pdf forms, you must have some version of Adobe Acrobat downloaded on your device. If you have any issues opening the documents call finance for assistance. \*\****

### **\*\*\*REMINDER\*\*\***

- BE SURE to call Finance **1 day** prior to your scheduled DMOB to ensure time is complete at **949-591-4123**
- Only 1 representative per resource should go to Finance at ICP to officially close out time.



# **FINANCE**

## **S# PROCESS**

### **FEDERAL RESOURCES ONLY**

- **PROPERTY LOSS-REPAIR-REPLACE OF NON-NATIONAL FIRE EQUIPMENT SYSTEM (NFES) OR NON-STANDARD CACHE ITEMS**

- **CAN IT BE REPLACED AT SUPPLY?**

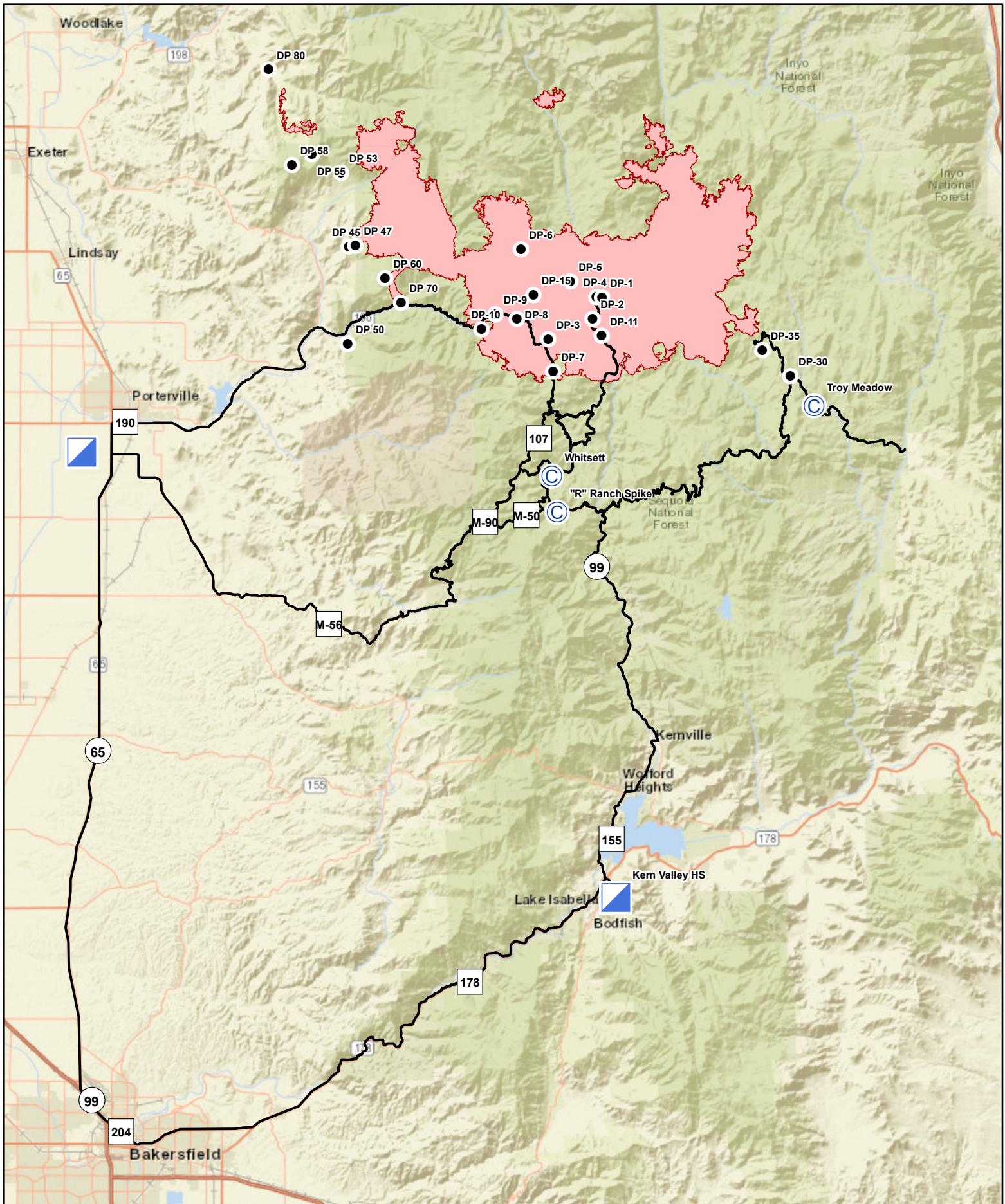
- 1. General message is needed (ICS 213) with contact information NAME/PHONE #/EMAIL/RESOURCE ORDER # send to Supply at [2020.castle.ordering@firenet.gov](mailto:2020.castle.ordering@firenet.gov)**
  - **IF YOU NEED AN S# FOR REPLACEMENT BECAUSE SUPPLY DOES NOT HAVE IT PLEASE DO THE FOLLOWING**
- 2. General message is needed (ICS 213) with contact information NAME/PHONE #/EMAIL/RESOURCE ORDER #. A description of property damage or loss needs to be documented and pictures of damaged items. Please send to finance at [2020.castle.finance@firenet.gov](mailto:2020.castle.finance@firenet.gov)**
- 3. We have Comp/Claims on site! Please reach out to us with any questions at 406-363-8956 or 406-366-3724.**



Northern Rockies Team 1  
EAST CASTLE ZONE SQF COMPLEX

PHONE LIST

POSITION	NAME	MOBILE PHONE
<b>SAFETY</b>		
Safety Officer 1	Cassidy, Dan	406-250-4599
<b>PUBLIC INFORMATION</b>		
Public Information Officer 1 (t)	Bateson, Anna	406-360-5638
Public Information Officer 1 (t)	Vosburgh, Mark	406-370-8149
<b>LIAISON</b>		
Liaison Officer	Taylor, Robert L	406-544-4679
Liaison Officer	Jaquith, Kay	406-531-9123
<b>OPERATIONS</b>		
Operations Section Chief 1	Olson, Brent H	406-249-4994
Line Ops	Schrenk, Scott	406-250-0354
Air Ops	Morton, Dennis	406-660-2318
<b>PLANNING</b>		
Planning Section Chief	Jermyn, Robin	406-360-5936
Planning Section Chief (t)	Carlin, Rob	406-249-1989
Deputy Planning Chief	Gump, Robert	850-688-7623
Status Check In	Heinsch, Faith Ann	858-204-7419
DEMOB		951-235-1568
<b>LOGISTICS</b>		
Logistics Section Chief 1	Showers, Charles	406-531-3691
Ordering Manager	Lind, Rita	406-291-3012
Supply Unit Leader	King, Josh	406-855-0984
COVID Hotline		949-330-9973
<b>FINANCE</b>		
Finance Section Chief 1	Schrenk, Amy	406-830-5214
General Finance Information		949-591-4123



**Transportation  
Sequoia Complex**  
CA-SQF\_002622

