

EAST CASTLE ZONE SQF COMPLEX

INCIDENT ACTION PLAN: NIGHT SHIFT

CA-SQF-002541 P5NG2P (0513)



Values

Firefighters and Public Safety

Communities: *Ponderosa, Camp Nelson, Pyles Boys Camp, Rogers Camp, Sequoia Crest, Cedar Slope, Alpine Village, Redwood Drive, Lloyd Meadows, Mountain Aire, Pierpoint, Coy Flat*

Infrastructure & Physical Assets: *Tule River Municipal Watershed, Osa, Beach, Casa Vieja and Beck Meadows, USGS Seismic Station, Blackrock RS, Quinn RS, Kern RS, roads, bridges, utilities, other agency structures, private inholdings, dispersed and developed recreation sites*

Cultural Sites: *Monache Mountain, Monache Meadow, and other archaeological & cultural sites*

Sequoia Groves: *Freeman Giant Sequoia Grove, Dillonwood Grove, and other groves*

TES Habitat: *Pacific Fisher, Little Kern Golden Trout, Mountain Yellow Legged Frog, CA Spotted Owl, Goshawk, Sierra Nevada Bighorn Sheep*



OPERATIONAL PERIOD

Friday, September 18, 2020

Saturday, September 19, 2020

0600 to 0600

INCIDENT OBJECTIVES	1. Incident Name	2. Date Prepared	3. Time Prepared
	EAST CASTLE ZONE SQF COMPLEX	9/17/2020	1530
4. Operational Period			
September 18 to September 19, 2020 0600 - 0600 DAY AND NIGHT SHIFT			
5. General Control Objectives for the Incident			
<ul style="list-style-type: none"> • Provide point protection of values at risk within communities and associated infrastructure to prevent loss of structures, utilities, and developed sites and facilities including: <ul style="list-style-type: none"> ▪ The communities of Camp Nelson, Pyles Boys Camp, Rogers Camp, Cedar Slope, Sequoia Crest, Alpine Village, Redwood Drive, Lloyd Meadows, Mountain Aire, Ponderosa, Pierpoint, and Coy Flat, • Infrastructure at Freeman Giant Sequoia Grove and other groves; Blackrock, Kern, and Quinn Ranger Stations; Osa, Beach, Casa Vieja, and Beck Meadows; Tule River Municipal Watershed; private inholdings; roads, bridges, utilities; and developed and dispersed recreation sites. • Monache Mountain, Monache Meadow and other archaeological and cultural sites. • Continue to hold and establish control lines that are safe for firefighters and provide a high probability of success to keep the fire north of Durr Wood Camp and west of Toowa Range to King Fisher Ridge to 22S05 Road. • Monitor the spread/growth of the Shotgun Fire using air operation assets. • Coordinate with Duty Officers from the Sequoia and Inyo NFs, Sequoia and Kings Canyon NPs, and the Tule River Indian Reservation on support to any new initial attack. 			
6. Management Objectives			
<ul style="list-style-type: none"> • Establish and implement common objectives and strategies under unified command with Cal Fire Team 6. • Implement suppression actions that have a high potential for success, carefully weighing risk exposure to firefighters. • Provide for the safety of firefighters, aviation and public through clear communication. Ensure an understanding of strategies and tactics, including a clearly defined and obtainable end state, in order to facilitate sound risk mitigation decision making. • Implement social distancing and adhere to the “module of one” concept to reduce physical exposure and transmission of COVID-19, to provide for the health and safety of all incident personnel. • Minimize to the extent feasible smoke exposure to firefighters, communities and other affected areas to reduce susceptibility to the consequences from COVID-19 exposure. • Maintain and strengthen relationships with partner agencies, stakeholders, cooperators, community leaders, and local agencies utilizing most effective platforms available. • Minimize adverse effects from suppression actions on riparian areas, wetlands, Little Kern Golden Trout, Mountain Yellow Legged Frog, Goshawk, California Spotted Owl, Pacific Fisher, and Sierra Nevada Bighorn Sheep habitats. • Minimize impacts to Wilderness areas; use minimum impact suppression tactics (MIST) by utilizing trails, streams, ridges and natural barriers when possible for control lines. 			
7. Commander’s Intent			
<ul style="list-style-type: none"> • Safety: Address fire fighter, public, and aviation safety through hazard/exposure mitigation. • Communication: We will keep the Agency Administrators informed of significant accomplishments and issues. • Risk Management: We will use a robust risk assessment process to mitigate unnecessary risk to fire fighters and update and/or revise decisions as necessary. • Human Resources: We will ensure that all incident personnel be treated with dignity and respect. We have a zero tolerance for harassment, alcohol, or illegal drug use. • Operations: We will make informed tactical decisions engaging the fire in the right locations with the appropriate resources. • Public Information: We will provide timely and accurate information through the press, meetings, trap lines, briefings, and social media. • Stakeholders: We will coordinate with the delegating agencies to identify key partners and keep them effectively informed of progress and to use their local knowledge. • Finance: We will establish and monitor cost effective methods for accomplishing incident objectives. 			
8. ATTACHMENTS (X IF ATTACHED)			
<input checked="" type="checkbox"/> Organization List - ICS 203	<input checked="" type="checkbox"/> Medical Plan - ICS 206	<input type="checkbox"/>	_____
<input checked="" type="checkbox"/> Division Assignment Lists - ICS 204	<input checked="" type="checkbox"/> Unit Log 214	<input type="checkbox"/>	_____
	<input checked="" type="checkbox"/> WF206 8 Line	<input type="checkbox"/>	_____
9. Prepared By (Planning Section Chief)		10. Approved By (Incident Commander)	
Rob Carlin PSC1 (t)		Michael Goicoechea IC	

ORGANIZATION ASSIGNMENT LIST				Operations Section	
1. Incident Name		East Castle Zone SQF Complex		Field Operations	Scott Schrenk
2. Date Prepared	9/17/2020	3. Time Prepared	1700	Planning Operations	Brent Olson 406.249.4994 Andy Huntsberger (t) 406.249.5786
4. Operational Period				Night Operations	Andy James (t)
September 18, 2020 to September 19, 2020 0600 to 0600				Branch I Director	Justin Kaber
Incident Commander and Staff				Branch II Director	Ryan Butler
Incident Commander	Mike Goicoechea			Structure Branch	Drew Daily
Deputy	Mark Goeller / Greg Poncin			Branch I	
Safety Officer	Dan Cassidy / Gerald Vickers / Todd Mott (t)			Alpha / Pondo	Kate Airhart / Tom McLeod (t)
Information Officer	Jeannette Smith 406.544.0131			Yankee / Zulu	Stryker Clark / Jerry Olson (t)
Liaison Officer	Rob Taylor 406.544.4679 / Kay Jaquith			Branch II	
Agency Representative				Whiskey	Mike King / Graydon Galloway (t)
SQF AA	Constance Cummins / Ann Niesen (t)			Branch V	
SQF and INF AR	Phillip DeSenze			Backcountry / Lima	Geoff Farinholt / Richard Baker (t)
INF AA	John (Pancho) Smith			Structure	
SEKI AA	Lee Taylor			Bravo	Rocky Wagoner
SEKI AR	Tom Garcia			Nelson	Hunter Seaborn Bell, III
BLM AA / BLM AR	Gabe Garcia / Leif Mathiesen			Night	
Tule River Tribe AR	Zane Santos 559.339.8686			East Zone Surge	Jon Norman
Cal Fire AR	Jesse Estrada			Ponderosa	Danny Wristen
NWR AA	Kirk Gilligan			Yankee / Zulu	Bret Davidson / John Lange (t)
Tulare Co FD	Jeff McLaughlin			Structure	Derek Steidley
Tulare CO Sheriff	Lt. Bobby Rader 559.731.3754			Air Operations Branch	
SoCAL Edison	Troy Whitman			Branch Director	Dennis Morton 406.660.2318
CHP	Chad Patton			Air Support Group Sup	John McKee 406.370.7028 / Dan Sepulveda
Tribal Liaison	Dirk Charley 559.554.5433			Air Tactical Group Sup	Justin Tashiro / Ken Crow
INBA	Nancy Gibson 530.598.8293			Finance Section	
SQF / INYO READ	Adam Bennett 760.920.8104			Section Chief	Amy Schrenk 406.830.5214
Planning Section				Time Unit	Marta Lujan 970.275.3120
Section Chief	Robin Jermyn 406.360.5936 / Rob Carlin (t)			Equipment Time	Lynda Pike 406.382.0086
Deputy	Rob Gump 850.688.7623			Personnel Time	Tama Lester 580.212.1017
Situation Unit	Derek Trauntvein 307.431.8598			Cost Unit	Khon Viengkham 703.217.7269
Demobilization Unit	Tanya Murphy 951.235.1568			Procurement Unit Leader	Dana Bangart 406.360.0029
Resources Unit Leader	Anya Moline 406.366.1979			Comps / Claims	Leon Augustine 406.363.8956 Shannon Maxwell (t) 406.366.3724
Status Check-in	Faith Ann Heinsch 858.204.7419			WHITSETT ORGANIZATION	
Fire Behavior Analyst	Brian Anderson 406.660.0450 / David Greathouse			Deputy IC	Mark Goeller
Long-Term Analyst	LaWen Hollingsworth 406.552.5440 / Alicia Reiner (t)			Safety	Todd Mott (t)
GIS Specialist	Erin Heiselmann 406.546.4014 Morgan Voss / McIntyre Murphy (t)			Operations	Scott Schrenk / Andy James (t)
Computer Specialist	Tim McCracken 303.859.7753			Plans	Rick Moore
Meteorologist	Dan Byrd 240.778.4278			Logistics	Roylene Gaul
Human Resource	Debby Hassel 406.274.7985			TROY MEADOWS ORGANIZATION	
Training Specialist	Matt Boss (t) 951.314.1427			Base Camp Manager	Pat Beers 253.318.9792
Logistics Section					
Section Chief	Charlie Showers 406.370.3787 Jim Evanoff 406.223.8660 / LeRoy Evans (t)				
Ordering Manager	Rita Lind 310.650.1222 or 423.534.9699 Kristin Troop (virtual)				
Supply Unit	Josh King 406.855.0984 / Brent Elmore (t)				
Facilities Unit	Janine Hammond 209.844.6220				
Food Unit	Ken Haberl 573.727.3593				
Base Camp	Dave Lafevre 406.696.1512				
Ground Support Unit	Keith Windell 213.503.4243				
Communications Unit	Dustin Sene 406.581.9816			CAL FIRE TEAM 6	
Communications Tech	Trent Coppinger 406.581.9027			Field Operations – Eric Schwab 530.708.2702 / Night Operations – Justin McGough, 951.482.9432 / Planning Operations – Scott Lane 951.581.2283	
Medical Unit	Emily Ellick-Flettre 405.593.3369 / Levi Clymer			Prepared by:	Anya Moline - RESL
Security Manager	Brian Thietje 262.994.8001				

SAFETY MESSAGE

SNAGS

Snags are dead, standing trees without leaves or needles in the crowns and present a significant threat to firefighter safety. Snags may burn through more quickly than green trees and can fall without warning. Live, structurally compromised green trees weakened by insects, disease, weather, fire, and age can also fall without notice.

Sawyers and crews should operate with increased awareness regarding hazard trees during low visibility or night operations. Night saw operations should include discussions involving minimizing falling operations due to reduced visibility and the reduction of situational awareness of immediate surroundings.

Environmental conditions that increase risk from hazard trees:

- Strong or gusty winds from storm cells.
- Air operations - water or retardant drops, rotor wash from helicopters.
- Steep slopes with rolling material.
- Diseased or bug-killed areas (Mountain Pine Beetle).
- Fire weakened timber.
- Reduced visibility from smoke, fog or darkness.

Things to consider when assessing the potential danger of hazard trees in an area:

- Timbered areas that have been burning for an extended period.
- High-risk tree species (those that are known for rot and shallow root systems) in the area.
- Numerous downed trees or tree parts in the area.
- Broken tops and dead limbs overhead or an accumulation of downed limbs around tree boles (stems).
- Signs of tree decay including: cavities, splits, cracks, lack of needles, mechanical damage, missing bark, insect infestation, mushrooms or fungus growing from tree.
- Root damage from equipment, fire, or erosion.
- Steep slopes for rolling debris, reduced personnel mobility, and more difficult size-up.
- Weather forecast with high winds or wind impacting the tree canopy.

Identify mitigation measures to reduce risk from hazard trees:

- Identify, communicate, establish, and monitor No-Work-Zones (NWZ) in all high-risk areas until the hazard has been mitigated.
- Assign qualified sawyers and Falling Bosses based on the complexity of the hazard.
- Consider ordering in higher complexity fallers in advance.
- Use heavy equipment or explosives to avoid placing sawyers under hazards.
- Plan quick and safe escape routes.
- Minimize exposure time at the stump by employing efficient felling procedures.
- Minimize impacts to the hazard tree from wedge pounding or other felling operations in the area.
- Do not turn your back on a falling tree or known hazard.
- Use lookouts and /or road guards to maintain secure felling areas.
- Also reference pages 22-23 in the IRPG



FIRE WEATHER FORECAST



FORECAST NO: 26
PREDICTION FOR: Sept 18-19, 2020 0600-0600

INCIDENT NAME: East Castle Zone SQF Complex

UNIT: CA-SQF
SIGNED: *Dan Byrd*

TIME AND DATE
FORECAST ISSUED: Thu, Sep 17 @ 2000 hours

Incident Meteorologist – Dan Byrd

*****Gusty West-Southwest at the Ridges Today*****

WEATHER DISCUSSION: An upper trough will move across the region today, with gusty southwest to west winds. Rh's will be higher today and temperatures will be cooler. Rh recovery will be good tonight with decreasing winds. Skies will clear by Saturday with even cooler temperatures and higher RH values. High pressure ridging will build back in on Sunday with warming temperatures and lower Rh's. Upper ridging will continue into early next week.

SKY/WEATHER TODAY (FRIDAY): Mostly cloudy becoming partly cloudy later this afternoon. Cooler with gusty winds at the ridges. Expect the weak inversion to break by 1000-1100 outside of heavy smoke.

MAX TEMPERATURES / MIN RELATIVE HUMIDITY:

5000 FT: 79 to 84 degrees (Down 5) / 18 to 23 (Up 10-12%)
7000 FT: 74 to 79 degrees (Down 5) / 22 to 27 (Up 10-12%)

EYE LEVEL WINDS:

Slope/Valley: Morning drainage winds will become South to southwest after 1000-1100 with speeds 7 to 12 gusts to 18 mph. Stronger winds in southwest to northeast aligned drainages and canyons.

Ridges: West-southwest 12 to 18 G20-25 mph.

MIXING HEIGHT...7,000 FT AGL VENTILATION... Excellent

TRANSPORT WIND... West-southwest 12-18 mph.

CWR (0.10")...0% LAL...1 HAINES...2

SKY/WEATHER TONIGHT (FRIDAY NIGHT): Mostly Clear with heavy smoke in the Kern River Valley. Overnight RH recoveries will be much improved.

MIN TEMPERATURES / MAX RELATIVE HUMIDITY

5000 FT: 50 to 55 degrees (Down 4-6) / 50 to 60% (Up 30-40%)
7000 FT: 51 to 56 degrees (Down 4-6) / 45 to 55% (Up 30-40%)

EYE LEVEL WINDS:

Slope/Valley: North to northeast 3 to 6 mph.

Ridges: West-southwest 8 to 12 G17 mph decreasing overnight.

CWR (0.10")...0% LAL...1

SATURDAY: Inversion lifting by 1100-1200. Mostly Sunny and smoky.

Max Temps: 70 to 85. **Min RH:** 16 to 25%. **Winds:** **Slope/Valley:** Morning drainage winds becoming South to southwest 4-8 G15 mph in the afternoon. Stronger winds in Southwest to Northeast drainages and canyons. **Ridge:** West-southwest to west 8-12 G18 mph.

LAL: 1 CWR (0.10"): 0% **MIXING HEIGHT:** 6,000 FT AGL **HAINES: 3**

OUTLOOK for SUNDAY Through TUESDAY:

SUNDAY: Mostly sunny. **High Temp:** 71-85. **Min RH:** 12. **Ridge Wind:** S-SW 6-10 G17 mph.

MONDAY: Mostly sunny. **High Temp:** 72-86. **Min RH:** 14. **Ridge Wind:** S-SW 8-12 G20 mph.

TUESDAY: Mostly sunny. **High Temp:** 70-84. **Min RH:** 15. **Ridge Wind:** S-SW 5-8 G15 mph.

FIRE BEHAVIOR FORECAST

FORECAST NUMBER: 28 Day	TYPE OF FIRE: Wildland
FIRE NAME: East Castle Zone SQF Complex	OPERATIONAL PERIOD: 9/18/2020 0600-2000
DATE ISSUED: September 17, 2020	TIME ISSUED: 0600
UNIT: CA-Sequoia National Forest	SIGNED: /s/ Brian Anderson FBAN

WEATHER

****Westerly winds****

(See Weather forecast for details)

Weather thresholds for large fire growth: Temps greater than 83°, RH's less than 20%, 20ft winds greater than 7mph

Rule of Thumb – To figure 20' winds, divide the observed eye level winds by .4

FUELS

Fuels- There are three primary fuels in the fire area. In the higher elevations above 5000' mixed conifer fuel types with a heavy load of dead and down dominate the fire area. At the mid elevations the fuels transition into more of a brush type. This will include most burn scars in the area. At the lower elevations, grass is the dominate fuel. There is a heavy component of beetle killed timber in the grey stage throughout the fire area. These pockets could lead to increased dead fuel loads in these areas. The fuels are very dry for this time of year. The ERC's are currently near the 97th. The 100-hr and 1000-hr fuels are at 6% and 7%. These indices indicate that all dead fuel will contribute to fire intensity.

Topography- Topography in the fire area is dominated by two features. The Kern river valley runs north/south and bisects the fire can produce diurnal up/down slope winds that can be strong enough to overpower the prevailing winds. The Tule River Canyon on the west side of the fire runs from the San Joaquin valley to east to about Ponderosa. This canyon can affect the winds and associated fire spread, especially at night.

FIRE BEHAVIOR

Tonight's maximum fire potential (Head Fire, 2%-4% fine dead fuel moisture)

REMEMBER: These are rates of spread for surface fire only, crown fire and spotting will increase the overall rates of spread

Timber			
	0% Slope	30% Slope	60% Slope
Rate of Spread	10-12 ch/hr	14-18 ch/hr	19-21 ch/hr
Flame Lengths	4-7'	6-8'	8-10'
Brush			
	0% Slope	30% Slope	60% Slope
Rate of Spread	3-5 ch/hr	5-7 ch/hr	10-12 ch/hr
Flame Lengths	3-4'	4-6'	6-8'

Rule of Thumb: Cut head fire flame lengths and rate of spread in half for flanking fire, backing fire 2'-4' flame lengths with rates of spread of 3-4 ch/hr

All Divisions: Humidity recoveries are expected to be better than last night but are still not favorable. If winds remain light, expect the fire behavior to be slightly less intense than yesterday. However, if gusts materialize watch for increased spread rates with spotting of up to ½ mile.

DIVS A – Westerly winds will likely push fire west of DP7 towards the Ponderosa community. Fuels continue to be receptive to spotting with minimal fire behavior.

DIVS B – Winds will be favorable to push fire from the West Fork Bear Creek back into itself. However, if fire becomes established in the Tule drainage bottom, predicted winds could accelerate and push fire toward Camp Nelson.

DIVS Y/Z – The forecasted winds have the potential to scour across the face of the needles ridge and push the fire that is already established to the east, moving toward the Kern river. Up canyon winds from the Kern river will likely overpower the westerly winds pushing fire northerly, away from unburned fuels to the south.

AIR OPERATIONS

Westerly winds may scour the smoke out and support air operations.

SAFETY

Keep your heads on a swivel, today is a day of change for wind direction and speed. Spread direction may catch you by surprise.

DIVISION ASSIGNMENT LIST				Branch		Division/Group					
Incident Name				I		ALPHA / PONDEROSA Page 1 of 2					
EAST CASTLE ZONE SQF COMPLEX				Operational Period							
				Date: 9/18/2020 to 9/19/2020			Time: 0600-0600				
Operations Personnel											
Operations Chief		Brent Olson, Scott Schrenk Andy Huntsberger (t)			Branch Director		Justin Kaber 406-250-1455				
Air Operations		Dennis Morton, John McKee Dan Sepulveda			Division/Group Supervisor		Kate Airhart / Tom McLeod (t) 406-360-0506 / 208-451-5050				
Safety Officer		Dan Cassidy, Gerald Vickers									
Resources Assigned This Period											
Strike Team/Task Force/ Resource Designator		Req#	Last Shift	Leader		# Persons	Drop Off Point /Time		Pick Up Point / Time		
HC2 Patrick 1		C-90	9/19	Joshua Chilst		20	Whitsett Base 0600		Whitsett Base 2100		
TFLD (t)		O-780	9/20	Bryan Shropshire		1	Whitsett Base 0600		Whitsett Base 2100		
ENG3 Yosemite 31		E-248	9/20	Roy Freitas		5	Whitsett Base 0600		Whitsett Base 2100		
ENG3 J3 Contracting		E-252	9/18	Jacob Vavricka		3	Whitsett Base 0600		Whitsett Base 2100		
ENG3 J3 Contracting		E-253	9/26	Wesley Wallace		3	Whitsett Base 0600		Whitsett Base 2100		
ENG6 R Construction		E-166	9/28	Richard DeRoche		3	Whitsett Base 0600		Whitsett Base 2100		
WTT2 Dust Busters		E-89	9/24	Albert Angulo		1	Whitsett Base 0600		Whitsett Base 2100		
WTT2 Dust Busters		E-352	9/30	Jaime Ayala		1	Whitsett Base 0600		Whitsett Base 2100		
DOZ2		E-5	9/21	Tyler Muth		1	Whitsett Base 0600		Whitsett Base 2100		
TFLD		O-946	9/28	Ron Seymour		1	Whitsett Base 0600		Whitsett Base 2100		
ENG3 A-1 Fire Services		E-79	9/19	Lawrence Wyatt		2	Whitsett Base 0600		Whitsett Base 2100		
ENG3 Green Valley		E-356	9/28	Mike Carrafa		3	Whitsett Base 0600		Whitsett Base 2100		
ENG3 Avondale Brush		E-357	9/28	Steve Mayhew		4	Whitsett Base 0600		Whitsett Base 2100		
ENG3 Tri City Fire		E-358	9/28	Servondo Henry		4	Whitsett Base 0600		Whitsett Base 2100		
ENG3 Brush 302		E-359	9/28	Chris Ader		3	Whitsett Base 0600		Whitsett Base 2100		
ENG4 Troy		E-134	9/19	Dan Hokanson		3	Whitsett Base 0600		Whitsett Base 2100		
ENG6 Flame Chaser		E-133	9/23	Duane Many Hides		3	Whitsett Base 0600		Whitsett Base 2100		
ENG6 J3 Contracting		E-355	9/28	Ric Hodges		3	Whitsett Base 0600		Whitsett Base 2100		
ENG6 J3 Contracting		E-364	9/28	John Piety		3	Whitsett Base 0600		Whitsett Base 2100		
WTT2 Hart		E-348	9/28	Robert McCleve		1	Whitsett Base 0600		Whitsett Base 2100		
WTT2 Hart		E-351	9/28	Jacob Tennyson		1	Whitsett Base 0600		Whitsett Base 2100		
Work Assignments											
<p>Task: Assess opportunities and implement point source protection to values in the Ponderosa, Quaking Aspen and Peppermint work center areas where feasible and safe to engage. Continue to utilize aircraft to limit fire spread around values. Implement firing operations as directed by Branch 1. Coordinate suppression actions with DIV Y/Z.</p> <p>Purpose: Minimize fire impacts to values within the mountain communities located within the DIV.</p> <p>End State: Limit fire spread into additional values at risk to protect communities and infrastructure.</p>											
Special Instructions											
<ul style="list-style-type: none"> Personnel to notify DIVS of potentially sensitive cultural materials. Castle Ambulance 3 staged at Whitsett Base Camp. Castle Ambulance 2 staged at Blackrock Ranger Station. Medic Team 1 available to all Branch I divisions. Prioritization of all control or containment actions taken during the operational period in this Division will be at the discretion of the DIVS. Actions may have to be taken by the DIVS that are not enumerated in today's IAP. These actions would be a result of a significant change in actual or expected fire behavior over and above that anticipated at the time the IAP was prepared. These actions will be coordinated with and approved by the OSC whenever possible. 											
Division/Group Communication Summary											
Function		Channel	Frequency RX	Frequency TX	TONE RX	TONE TX	Function		Channel	Frequency RX	Frequency TX
COMMAND		1	170.0000	166.6750	151.4	151.4	A/G TAC		13	172.3500	172.3500
NIFC T1		5	168.0500	168.0500	151.4	151.4	A/G CMD		14	169.1500	169.1500
Prepared by			Approved By				Date			Time	
Anya Moline - RESL			Robin Jermyn - PSC				9/17/2020			1800	

DIVISION ASSIGNMENT LIST		Branch	Division/Group
Incident Name		I	ALPHA / PONDEROSA Page 2 of 2
EAST CASTLE ZONE SQF COMPLEX		Operational Period	
		Date: 9/18/2020 to 9/19/2020 Time: 0600-0600	
Operations Personnel			
Operations Chief	Brent Olson, Scott Schrenk Andy Huntsberger (t)	Branch Director	Justin Kaber 406-250-1455
Air Operations	Dennis Morton, John McKee Dan Sepulveda	Division/Group Supervisor	Kate Airhart / Tom McLeod (t) 406-360-0506 / 208-451-5050
Safety Officer	Dan Cassidy, Gerald Vickers		

Resources Assigned This Period

Strike Team/Task Force/ Resource Designator	Req#	Last Shift	Leader	# Persons	Drop Off Point /Time	Pick Up Point / Time
TFLD	O-1008	9/22	Matt Chambers	1	Whitsett Base 0600	Whitsett Base 2100
TFLD (t)	O-336	9/21	Scott Turner	1	Whitsett Base 0600	Whitsett Base 2100
ENG3 San Juan County E31	E-365	9/30	Aarion Austin	3	Whitsett Base 0600	Whitsett Base 2100
ENG6 High Desert	E-137	9/28	Thomas Hanks	3	Whitsett Base 0600	Whitsett Base 2100
ENG6 Red Dog	E-167	9/28	Tim England	2	Whitsett Base 0600	Whitsett Base 2100
ENG6 Cibola	E-398	9/30	Jacob Randall	4	Whitsett Base 6000	Whitsett Base 2100
WTT2 49ers	E-50	9/27	Steve Smith	1	Whitsett Base 0600	Whitsett Base 2100
GRD2 Kirklang	E-97	9/30	Todd Adams	2	Whitsett Base 0600	Whitsett Base 2100
SKD1 McKellar	E-214	9/24	Harley Toller	2	Whitsett Base 0600	Whitsett Base 2100
SOF2	O-382	9/21	Todd Mott	1	Whitsett Base 0600	Whitsett Base 2100
SOFR (t)	O-393	9/23	Jacob Brollier	1	Whitsett Base 0600	Whitsett Base 2100
EMPF	O-974	9/28	Larry Hoqueisson	1	Whitsett Base 0600	Whitsett Base 2100
EMPF	O-958	9/28	Brian Boulware	1	Whitsett Base 0600	Whitsett Base 2100
REAF	O-894	9/27	Jared Kellogg	1	Whitsett Base 0600	Whitsett Base 2100

Work Assignments

Task: Assess opportunities and implement point source protection to values in the Ponderosa, Quaking Aspen and Peppermint work center areas where feasible and safe to engage. Continue to utilize aircraft to limit fire spread around values. Implement firing operations as directed by Branch 1. Coordinate suppression actions with DIV Y/Z.

Purpose: Minimize fire impacts to values within the mountain communities located within the DIV.

End State: Limit fire spread into additional values at risk to protect communities and infrastructure.

Special Instructions

- Personnel to notify DIVS of potentially sensitive cultural materials.
- Castle Ambulance 3 staged at Whitsett Base Camp. Castle Ambulance 2 staged at Blackrock Ranger Station. Medic Team 1 available to all Branch I divisions.
- Prioritization of all control or containment actions taken during the operational period in this Division will be at the discretion of the DIVS. Actions may have to be taken by the DIVS that are not enumerated in today's IAP. These actions would be a result of a significant change in actual or expected fire behavior over and above that anticipated at the time the IAP was prepared. These actions will be coordinated with and approved by the OSC whenever possible.

Division/Group Communication Summary

Function	Channel	Frequency RX	Frequency TX	TONE RX	TONE TX	Function	Channel	Frequency RX	Frequency TX
COMMAND NIFC T1	1	170.0000	166.6750	151.4	151.4	A/G TAC	13	172.3500	172.3500
	5	168.0500	168.0500	151.4	151.4	A/G CMD	14	169.1500	169.1500
Prepared by Anya Moline - RESL	Approved By Robin Jermyn - PSC		Date 9/17/2020				Time 1800		

DIVISION ASSIGNMENT LIST			Branch		Division/Group				
Incident Name			I		YANKEE / ZULU				
EAST CASTLE ZONE SQF COMPLEX			Operational Period						
			Date: 9/18/2020 to 9/19/2020 Time: 0600-0600						
Operations Personnel									
Operations Chief	Brent Olson, Scott Schrenk Andy Huntsberger (t)		Branch Director		Justin Kaber 406-250-1455				
Air Operations	Dennis Morton, John McKee Dan Sepulveda		Division/Group Supervisor		Stryker Clark / Jerry Olson (t) 406-546-7405				
Safety Officer	Dan Cassidy, Gerald Vickers								
Resources Assigned This Period									
Strike Team/Task Force/ Resource Designator	Req#	Last Shift	Leader	# Persons	Drop Off Point /Time	Pick Up Point / Time			
HC1 Inyo	C-106	9/30	Joe Schilling	19	Whitsett Base 0600	Whitsett Base 2100			
HC2 Fery	C-92	9/20	Ryan Hoffman-Wentling	20	Whitsett Base 0600	Whitsett Base 2100			
TFLD	O-259	9/23	Isaac Solomon	1	Whitsett Base 0600	Whitsett Bsse 2100			
WTT2 Dust Busters	E-49	9/21	Nathan Stutz	2	Whitsett Base 0600	Whitsett Base 2100			
WTT2 Valley Farm	E-88	9/25	Jeff Bates	1	Whitsett Base 0600	Whitsett Base 2100			
WTT2 SQF	E-114	9/30	Jamie Alaya	2	Whitsett Base 0600	Whitsett Base 2100			
WTT2 Central 25	E-146	9/20	Jeff Nevins	2	Whitsett Base 0600	Whitsett Base 2100			
EXC2 Shannon Brox	E-179	9/27	Chuck Sandborg	1	Whitsett Base 0600	Whitsett Base 2100			
DOZ2 Shannon Bros	E-44	9/28	Bill Shannon	1	Whitsett Base 0600	Whitsett Base 2100			
DOZ2 Connor	E-83	9/23	Tim Connor	1	Whitsett Base 0600	Whitsett Base 2100			
SKG2 Alvord Fire	E-194	9/29	John Morey	2	Whitsett Base 0600	Whitsett Base 2100			
FMOD Swedberg Const.	O-599	9/22	Wade Giguere	2	Whitsett Base 0600	Whitsett Base 2100			
EMPF	O-827	9/20	Tom Zamora	1	Whitsett Base 0600	Whitsett Base 2100			
EMPF	O-91	9/29	Royce Copeman	1	Whitsett Base 0600	Whitsett Base 2100			
AMBU	E-170	9/27	Castle 3	2	Whitsett Base 0600	Whitsett Base 2100			
REAF	O-229	9/19	Lanny Flaherty	1	Whitsett Base 0600	Whitsett Base 2100			
REAF	O-277	9/19	Scott Dailey	1	Whitsett Base 0600	Whitsett Base 2100			
Work Assignments									
<p>Task: Implement point source protection to values in Ponderosa, Pyles Camp, Lloyd Meadows and Freeman Grove. Scout for direct and indirect containment opportunities along the southern edge and continue to improve existing indirect containment lines. Monitor and manage fire effects to the extent possible in the Freeman Grove. Coordinate with DIV A - Ponderosa Structure Group.</p> <p>Purpose: Minimize impacts to values and limit fire spread to the southwest.</p> <p>End State: Fire impacts to private property and infrastructure is minimized to the extent possible, natural resource impacts are limited, and there are no accidents or injuries to firefighters or the public.</p>									
Special Instructions									
<ul style="list-style-type: none"> Personnel to notify DIVS of potentially sensitive cultural materials. Castle Ambulance 3 staged at Whitsett Base Camp. Castle Ambulance 2 staged at Blackrock Ranger Station. Medic Team 1 available to all Branch I divisions. Crews be prepared to spike. Prioritization of all control or containment actions taken during the operational period in this Division will be at the discretion of the DIVS. Actions may have to be taken by the DIVS that are not enumerated in today's IAP. These actions would be a result of a significant change in actual or expected fire behavior over and above that anticipated at the time the IAP was prepared. These actions will be coordinated with and approved by the OSC whenever possible. 									
Division/Group Communication Summary									
Function	Channel	Frequency RX	Frequency TX	TONE RX	TONE TX	Function	Channel	Frequency RX	Frequency TX
COMMAND	1	170.0000	166.6750	151.4	151.4	A/G TAC	13	172.3500	172.3500
NIFC T6	8	166.7750	166.7750	151.4	151.4	A/G CMD	14	169.1500	169.1500
Prepared by Anya Moline - RESL	Approved By Robin Jermyn - PSC		Date 9/17/2020				Time 1800		

DIVISION ASSIGNMENT LIST				Branch		Division/Group				
Incident Name				II		WHISKEY				
EAST CASTLE ZONE SQF COMPLEX				Operational Period						
				Date 9/18/2020 to 9/19/2020				Time 0600-0600		
Operations Personnel										
Operations Chief		Brent Olson, Scott Schrenk Andy Huntsberger (t)			Branch Director			Ryan Butler 406-250-0375		
Air Operations		Dennis Morton, John McKee Dan Sepulveda			Division/Group Supervisor			Mike King / Graydon Galloway (t) 406-370-2121 / 208-546-9653		
Safety Officer		Dan Cassidy, Gerald Vickers								
Resources Assigned This Period										
Strike Team/Task Force/ Resource Designator	Req#	Last Shift	Leader	# Persons	Drop Off Point /Time	Pick Up Point / Time				
STEN	O-998	9/30	Richard Brown	1	Camp Nelson 0600	Camp Nelson 2100				
DOZ2 Corathers	E-405	9/30	Buck Corathers	1	Camp Nelson 0600	Camp Nelson 2100				
ENG6 E694	E-406	9/30	Willie McDermitt	2	Camp Nelson 0600	Camp Nelson 2100				
ENG3 E391	E-407	9/30	Curtis Gibson	3	Camp Nelson 0600	Camp Nelson 2100				
Work Assignments										
<p>Task: Prep the Crawford Road east to the 107 Road. Develop a firing plan focused on limiting fire effects and be prepared to implement to prevent the negative impacts of high intensity fire. Coordinate with Tule River Fire personnel on any line construction on reservation ground. Coordinate with DD to connect the Black Mtn Ridge with the Cow Mountain FCR.</p> <p>Purpose: Protect the municipal water shed and other important tribal values from high intensity fire.</p> <p>End State: Values at risk are not negatively impacted by high intensity fire or heavy handed suppression action</p>										
Special Instructions										
<ul style="list-style-type: none"> Personnel to notify DIVS of potentially sensitive cultural materials. Castle Ambulance 3 staged at Whitsett Base Camp. Castle Ambulance 2 staged at Blackrock Ranger Station. Medic Team 1 available to all Branch I divisions. Prioritization of all control or containment actions taken during the operational period in this Division will be at the discretion of the DIVS. Actions may have to be taken by the DIVS that are not enumerated in today's IAP. These actions would be a result of a significant change in actual or expected fire behavior over and above that anticipated at the time the IAP was prepared. These actions will be coordinated with and approved by the OSC whenever possible. 										
Division/Group Communication Summary										
Function	Channel	Frequency RX	Frequency TX	TONE RX	TONE TX	Function	Channel	Frequency RX	Frequency TX	
Command	3	172.5500	162.1875	151.4	151.4	A/G TAC	13	172.3500	172.3500	
NIFT T5	7	166.7250	166.7250	151.4	151.4	A/G CMD	14	169.1500	169.1500	
Prepared by		Approved By				Date		Time		
Anya Moline – RESL		Robin Jermyn				9/17/2020		1800		

DIVISION ASSIGNMENT LIST		Branch	Division/Group
Incident Name		V	BACKCOUNTRY / LIMA page 1 of 2
EAST CASTLE ZONE SQF COMPLEX		Operational Period	
		Date: 9/18/2020 to 9/19/2020	Time: 0600-0600

Operations Personnel			
Operations Chief	Brent Olson, Scott Schrenk Andy Huntsberger (t)	Branch Director	
Air Operations	Dennis Morton, John McKee Dan Sepulveda	Division/Group Supervisor	Geoff Farinholt / Richard Baker (t) 406-529-5671
Safety Officer	Dan Cassidy, Gerald Vickers		

Division/Group Supervisor						
Strike Team/Task Force/ Resource Designator	Req#	Last Shift	Leader	# Persons	Drop Off Point /Time	Pick Up Point / Time
WFM Horseshoe	O-1	9/20	Candice Kutrosky	12	Troy Meadow 0600	Troy Meadow 2100
WFM Slate	O-4	9/21	Angel Reyes	10	Troy Meadow 0600	Troy Meadow 2100
ENG3 SQF E341	E-216	9/22	Merritt Cuttin	5	Troy Meadow 0600	Troy Meadow 2100
ENG3 Gonzales	E-256	9/26	Steve Reason	3	Troy Meadow 0600	Troy Meadow 2100
ENG6 White Horse	E-199	9/30	Jason McGaughy	3	Troy Meadow 0600	Troy Meadow 2100
ENG6 Late Summers	E-200	9/28	Josh Crollard	3	Troy Meadow 0600	Troy Meadow 2100
ENG6 Late Summers	E-201	9/28	Brad Beck	3	Troy Meadow 0600	Troy Meadow 2100
ENG5 Aberasturi	E-202	9/20	Russell Haynes	3	Troy Meadow 0600	Troy Meadow 2100
ENG6 Flame Chaser	E-198	9/20	Edwin Hall	3	Troy Meadow 0600	Troy Meadow 2100
ENG6 R&R Fire	E-205	9/23	Mike Cox	3	Troy Meadow 0600	Troy Meadow 2100
ENG6 CNF E473	E-263	9/19	Allen Tennant	5	Troy Meadow 0600	Troy Meadow 2100
SKD1 McKellar	E-193	9/25	Brett Strong	1	Troy Meadow 0600	Troy Meadow 2100
DOZ2	E-140	9/18	David Krisher	2	Troy Meadow 0600	Troy Meadow 2100

Work Assignments
Task: Maintain readiness and structure protection in: Bonita Meadow, West Meadow, Beach Meadow and Blackrock Work Center. Recon and develop a structure protection plan for Monache. Continue to go direct with crews and equipment on eastern finger of fire north of Beach Meadows. Monitor division X-Ray from the air and utilize air resources as needed to keep green islands from impacting control lines west of H-4. Assist with point protection as needed.

Purpose: Limit impact to values at risk.

End State: Values at risk are not impacted by fire. A plan to protect values at risk is developed for the Monache area. The spread of fire to the south and east is limited in divisions L/X

- Special Instructions**
- **A/G Tac for Branch Five: RX169.200, TX 169.200. This needs to be hand programmed.**
 - Personnel to notify DIVS of potentially sensitive cultural materials.
 - Castle Ambulance 3 staged at Whitsett Base Camp. Castle Ambulance 2 staged at the Blackrock Ranger Station. Castle REMS 2 available to all branch divisions.
 - Prioritization of all control or containment actions taken during the operational period in this Division will be at the discretion of the DIVS. Actions may have to be taken by the DIVS that are not enumerated in today's IAP. These actions would be a result of a significant change in actual or expected fire behavior over and above that anticipated at the time the IAP was prepared. These actions will be coordinated with and approved by the OSC whenever possible.

Division/Group Communication Summary										
Function	Channel	Frequency RX	Frequency TX	TONE RX	TONE TX	Function	Channel	Frequency RX	Frequency TX	
COMMAND	2	170.6875	166.5750	151.4	151.4	A/G TAC	13	172.3500	172.3500	
COMMAND	3	172.5500	162.1875	151.4	151.4	A/G CMD	14	169.1500	169.1500	
NIFC T7	9	168.2500	168.2500	151.4	151.4					
Prepared by Anya Moline – RESL		Approved By Robin Jermyn - PSC				Date 9/17/2020			Time 1800	

DIVISION ASSIGNMENT LIST				Branch		Division/Group			
Incident Name				V		BACKCOUNTRY / LIMA page 2 of 2			
EAST CASTLE ZONE SQF COMPLEX				Operational Period					
				Date: 9/18/2020 to 9/19/2020		Time: 0600-0600			
Operations Personnel									
Operations Chief		Brent Olson, Scott Schrenk Andy Huntsberger (t)		Branch Director					
Air Operations		Dennis Morton, John McKee Dan Sepulveda		Division/Group Supervisor		Geoff Farinholt / Richard Baker (t) 406-529-5671			
Safety Officer		Dan Cassidy, Gerald Vickers							
Division/Group Supervisor									
Strike Team/Task For ce/ Resource Designator		Req#	Last Shift	Leader	# Persons	Drop Off Point /Time	Pick Up Point / Time		
CHIP		E-189	9/24	Don Kelley	2	Troy Meadow 0600	Troy Meadow 2100		
EXCA		E-187	9/25	Kody Williams	1	Troy Meadow 0600	Troy Meadow 2100		
FMOD Under Dog		O-596	9/26	Gary Balmain	2	Troy Meadow 0600	Troy Meadow 2100		
KNP-E42			9/30	Jeff Singer	3	Troy Meadow 0600	Troy Meadow 2100		
REMS2		E-217	9/19	Ray Storm	6	Troy Meadow 0600	Troy Meadow 2100		
EMPF		O-497	9/23	Tom Kavanaugh	1	Troy Meadow 0600	Troy Meadow 2100		
EMPF		O-551	9/23	Matthew Heckman	1	Troy Meadow 0600	Troy Meadow 2100		
EMPF		O-581	9/25	Joshua Terry	1	Troy Meadow 0600	Troy Meadow 2100		
EMTF		O-935	9/28	Tim Higeons	1	Troy Meadow 0600	Troy Meadow 2100		
AMBU		E-52	9/21	Castle 2	2	Troy Meadow 0600	Troy Meadow 2100		
REAF		O-522	9/19	Dan Swanson	1	Troy Meadow 0600	Troy Meadow 2100		
REAF		O-858	9/26	Lauren Archer	1	Troy Meadow 0600	Troy Meadow 2100		
REAF		O-926	9/27	Joshua James	1	Troy Meadow 0600	Troy Meadow 2100		
Work Assignments									
<p>Task: Maintain readiness and structure protection in: Bonita Meadow, West Meadow, Beach Meadow and Blackrock Work Center. Recon and develop a structure protection plan for Monache. Continue to go direct with crews and equipment on eastern finger of fire north of Beach Meadows. Monitor division X-Ray from the air and utilize air resources as needed to keep green islands from impacting control lines west of H-4. Assist with point protection as needed.</p> <p>Purpose: Limit impact to values at risk.</p> <p>End State: Values at risk are not impacted by fire. A plan to protect values at risk is developed for the Monache area. The spread of fire to the south and east is limited in divisions L/X</p>									
Special Instructions									
<ul style="list-style-type: none"> • A/G Tac for Branch Five: RX169.200, TX 169.200. This needs to be hand programmed. • Personnel to notify DIVS of potentially sensitive cultural materials. • Castle Ambulance 3 staged at Whitsett Base Camp. Castle Ambulance 2 staged at the Blackrock Ranger Station. Castle REMS 2 available to all branch divisions. • Prioritization of all control or containment actions taken during the operational period in this Division will be at the discretion of the DIVS. Actions may have to be taken by the DIVS that are not enumerated in today's IAP. These actions would be a result of a significant change in actual or expected fire behavior over and above that anticipated at the time the IAP was prepared. These actions will be coordinated with and approved by the OSC whenever possible. 									
Division/Group Communication Summary									
Function	Channel	Frequency RX	Frequency TX	TONE RX	TON E TX	Function	Channel	Frequency RX	Frequency TX
COMMAND	2	170.6875	166.5750	151.4	151.4	A/G TAC	13	172.3500	172.3500
COMMAND	3	172.5500	162.1875	151.4	151.4	A/G CMD	14	169.1500	169.1500
NIFC T7	9	168.2500	168.2500	151.4	151.4				
Prepared by Anya Moline – RESL		Approved By Robin Jermyn - PSC				Date 9/17/2020		Time 1800	

DIVISION ASSIGNMENT LIST			Branch		Division/Group				
Incident Name			STRUCTURE		BRAVO				
EAST CASTLE ZONE SQF COMPLEX			Operational Period						
			Date: 9/18/2020 to 9/19/2020 Time: 0600-0600						
Operations Personnel									
Operations Chief	Brent Olson, Scott Schrenk Andy Huntsberger (t)		Branch Director			Drew Daily 405-431-9476			
Air Operations	Dennis Morton, John McKee Dan Sepulveda		Division/Group Supervisor			Rocky Wagoner 406-531-9809			
Safety Officer	Dan Cassidy, Gerald Vickers								
Resources Assigned This Period									
Strike Team/Task Force/ Resource Designator	Req#	Last Shift	Leader	# Persons	Drop Off Point /Time	Pick Up Point / Time			
HC1 Los Padres	C-110	9/28	Los Padres	19	Camp Nelson 0600	Camp Nelson 2100			
WFM Whiskey Flat	O-574	9/18	Travis Clendenen	9	Camp Nelson 0600	Camp Nelson 2100			
TFLD	O-582	9/18	Robert Bundy	1	Camp Nelson 0600	Camp Nelson 2100			
ENG3 Kinsley	E-249	9/18	Kurt Edwards	1	Camp Nelson 0600	Camp Nelson 2100			
ENG6 Buffalo Bill	E-132	9/30	Gregg Webster	3	Camp Nelson 0600	Camp Nelson 2100			
ENG6 R Construction	E-166	9/30	Richard DeRoche	3	Camp Nelson 0600	Camp Nelson 2100			
ENG6 Allen E619	E-312	9/22	Peter Allen	3	Camp Nelson 0600	Camp Nelson 2100			
ENG6 Double D	E-313	9/22	Matthew Dimas	3	Camp Nelson 0600	Camp Nelson 2100			
ENG5 Deep Sea Fire	E-367	9/30	Justin Williams	3	Camp Nelson 0600	Camp Nelson 2100			
DOZ2 Shannon Bros	E-45	9/27	John Shannon	1	Camp Nelson 0600	Camp Nelson 2100			
DOZ2 Westlund	E-139	9/19	Alan Westlund	2	Camp Nelson 0600	Camp Nelson 2100			
SKG2 Alvord Fire	E-180	9/23	Justin Davis	1	Camp Nelson 0600	Camp Nelson 2100			
FMOD Timbersmith	O-177	9/16	Ryan Deniz	2	Camp Nelson 0600	Camp Nelson 2100			
SOF2	O-496	9/23	Tom Nash	1	Camp Nelson 0600	Camp Nelson 2100			
SOF2 (t)	O-888	9/26	Roy Cribb	1	Camp Nelson 0600	Camp Nelson 2100			
Medic Team 1	E-217	9/19	Devon Pulvino	3	Camp Nelson 0600	Camp Nelson 2100			
Work Assignments									
<p>Task: Implement point source protection around values in Pierpoint, Camp Nelson and Coy Flat where feasible. Utilize aerial resources to limit fire spread around values at risk. Utilize direct and indirect tactics to work toward containing spread and evaluate opportunities for indirect containment lines farther to the south. Coordinate with division A to ensure an integrated strategy. Coordinate all actions with Cal Fire Team 6.</p> <p>Purpose: Minimize impacts to surrounding communities and limit fire spread to the south and west.</p> <p>End State: Impacts to local communities and infrastructure was kept to a minimum.</p>									
Special Instructions									
<ul style="list-style-type: none"> Personnel to notify DIVS of potentially sensitive cultural materials. Castle Ambulance 3 staged at Whitsett Base Camp. Castle Ambulance 2 staged at Blackrock Ranger Station. Medic Team 1 available to all Branch I divisions. Prioritization of all control or containment actions taken during the operational period in this Division will be at the discretion of the DIVS. Actions may have to be taken by the DIVS that are not enumerated in today's IAP. These actions would be a result of a significant change in actual or expected fire behavior over and above that anticipated at the time the IAP was prepared. These actions will be coordinated with and approved by the OSC whenever possible. 									
Division/Group Communication Summary									
Function	Channel	Frequency RX	Frequency TX	TONE RX	TONE TX	Function	Channel	Frequency RX	Frequency TX
COMMAND	1	170.0000	166.6750	151.4	151.4	A/G TAC	13	172.3500	172.3500
NIFC T3	6	168.6000	168.6000	151.4	151.4	A/G CMD	14	169.1500	169.1500
Prepared by Anya Moline – RESL	Approved By Robin Jermyn - PSC			Date 9/17/2020		Time 1800			

DIVISION ASSIGNMENT LIST				Branch		Division/Group			
Incident Name				STRUCTURE		NELSON			
EAST CASTLE ZONE SQF COMPLEX				Operational Period					
				Date: 9/18/2020 to 9/19/2020		Time: 0600-0600			
Operations Personnel									
Operations Chief		Brent Olson, Scott Schrenk Andy Huntsberger (t)		Branch Director		Drew Daily 405-431-9476			
Air Operations		Dennis Morton, John McKee Dan Sepulveda		Division/Group Supervisor		Hunter Seaborn Bell, III 406-670-5633			
Safety Officer		Dan Cassidy, Gerald Vickers							
Resources Assigned This Period									
Strike Team/Task Force/ Resource Designator	Req#	Last Shift	Leader	# Persons	Drop Off Point /Time	Pick Up Point / Time			
HC2 Patrick 2	C-91	9/19	Austin Hergert	20	Camp Nelson 0600	Camp Nelson 2100			
S/T 2806A	E-280	9/18	Kevin Gotro	21	Camp Nelson 0600	Camp Nelson 2100			
S/T 5810A	E-281	9/18	Sal Gutierrez	22	Camp Nelson 0600	Camp Nelson 2100			
S/T 5186B	E-354	9/26	Dwayne Shires	20	Camp Nelson 0600	Camp Nelson 2100			
TFLD		9/20	Bill Castonquay	1	Camp Nelson 0600	Camp Nelson 2100			
ENG3 CO River	E-245	9/20	Randy Hill (t)	4	Camp Nelson 0600	Camp Nelson 2100			
ENG3 Greater Eagle	E-246	9/20	Wade Michels	5	Camp Nelson 0600	Camp Nelson 2100			
ENG6 Carlsbad 62	E-259	9/25	Scott Maxwell	3	Camp Nelson 0600	Camp Nelson 2100			
ENG6 Sandoval Brush 22	E-260	9/25	Harris Toya	3	Camp Nelson 0600	Camp Nelson 2100			
ENG6 Farmington Brush 6	E-261	9/25	Duane Bair	2	Camp Nelson 0600	Camp Nelson 2100			
ENG6 Sac Mtn 218	E-262	9/25	Barbara Stephens	3	Camp Nelson 0600	Camp Nelson 2100			
WTT2 K&B	E-236	9/24	James Davis	1	Camp Nelson 0600	Camp Nelson 2100			
WTT2 Ice WT#152	E-242	9/20	Terry Titus	2	Camp Nelson 0600	Camp Nelson 2100			
WTT2 Sacramento Mtn	E-243	9/20	Ed Wishard	2	Camp Nelson 0600	Camp Nelson 2100			
WTT1 Oes WT139	E-282	9/18	Keith Smith	2	Camp Nelson 0600	Camp Nelson 2100			
WTT1 Oes WT42	E-283	9/18	Robin Serna	2	Camp Nelson 0600	Camp Nelson 2100			
WTT1 WT51	E-285	9/27	John Davies	2	Camp Nelson 0600	Camp Nelson 2100			
SOFR (t)	O-511	9/24	Augie Barreda	1	Camp Nelson 0600	Camp Nelson 2100			
EMPF	O-863	9/22	Chris Inman	1	Camp Nelson 0600	Camp Nelson 2100			
AMBU5	E-337	9/23	Castle 5	2	Camp Nelson 0600	Camp Nelson 2100			
Work Assignments									
<p>Task: Support line divisions with fireline perimeter control as instructed by Branch Director or Operations Section Chief. Reinforce structure protection plans with hose lays, static water supply and hazard mitigation as instructed by Group Supervisor for values at risk in Camp Nelson, Cedar Slope, Alpine Village, Sequoia Crest and Pierpoint. Assist Ponderosa Structure Group as requested by Operations Section Chief or Branch Director.</p> <p>Purpose: Protect values at risk from wildfire impacts with emphasis on supporting fireline perimeter control well in advance of direct threats to communities and improvements.</p> <p>End State: Values at risk and communities are able to operate in pre-fire condition accounting for public safety.</p>									
Special Instructions									
<ul style="list-style-type: none"> Personnel to notify DIVS of potentially sensitive cultural materials. Castle Ambulance 3 staged at Whitsett Base Camp. Castle Ambulance 2 staged at Black Rock Ranger station. Medic Team 1 available to all structure divisions. Prioritization of all control or containment actions taken during the operational period in this Division will be at the discretion of the DIVS. Actions may have to be taken by the DIVS that are not enumerated in today's IAP. These actions would be a result of a significant change in actual or expected fire behavior over and above that anticipated at the time the IAP was prepared. These actions will be coordinated with and approved by the OSC whenever possible. 									
Division/Group Communication Summary									
Function	Channel	Frequency RX	Frequency TX	TONE RX	TONE TX	Function	Channel	Frequency RX	Frequency TX
COMMAND R5 T6	1	170.0000	166.6750	151.4	151.4	A/G TAC A/G CMD	13	172.3500	172.3500
	11	168.2375	168.2375	151.4	151.4		14	169.1500	169.1500
Prepared by Anya Moline – RESL		Approved By Robin Jermyn - PSC				Date 9/17/2020		Time 1800	

DIVISION ASSIGNMENT LIST			Branch		Division/Group	
Incident Name			NIGHT		YANKEE / ZULU	
EAST CASTLE ZONE SQF COMPLEX			Operational Period			
			Date: 9/18/2020 to 9/19/2020		Time: 0600-0600	
Operations Personnel						
Operations Chief	Andy James (t)		Branch Director			
Safety Officer	Dan Cassidy, Gerald Vickers		Division/Group Supervisor		Bret Davidson / John Lange (t) 858-775-4586 / 970-769-5389	
Resources Assigned This Period						
Strike Team/Task Force/ Resource Designator	Req#	Last Shift	Leader	# Persons	Drop Off Point /Time	Pick Up Point / Time
ENG6 Cahoon	E-64	9/27	Blaine Fifield	3	Whitsett Base 1800	Whitsett Base 0900
ENG6 Tule River Fire	E-72	9/22	Stordy Dick	4	Whitsett Base 1800	Whitsett Base 0900
ENG6 Peanut Pie	E-78	9/27	Wayde Visser	3	Whitsett Base 1800	Whitsett Base 0900
ENG6 K&L Brush 11	E-314	9/22	Bryson Kanady	3	Whitsett Base 1800	Whitsett Base 0900
ENG6 Truck 18	E-315	9/23	Philip Hoag	3	Whitsett Base 1800	Whitsett Base 0900
ENG6 J3 Contracting	E-316	9/23	Mike Cade	3	Whitsett Base 1800	Whitsett Base 0900
EMTF	O-580	9/24	Steve Devincinzi	1	Whitsett Base 1800	Whitsett Base 0900
AMBU	E-46	9/19	Castle1	2	Whitsett Base 1800	Whitsett Base 0900

Work Assignments

Task: Patrol and monitor from Ponderosa over to Pyles Camp. Support the defense of Ponderosa as requested. Continue operations from day shift as conditions allow. Mop-up as appropriate based on firefighter safety.

Purpose: Limit fire spread to additional values at risk.

End State: Fire spread limited to existing fire perimeter.

Special Instructions

- Personnel to notify DIVS of potentially sensitive cultural materials.
- Castle Ambulance 3 staged at Whitsett Base Camp. Castle Ambulance 2 staged at Blackrock Ranger Station. Castle REMS 1 available to all structure divisions.
- Prioritization of all control or containment actions taken during the operational period in this Division will be at the discretion of the DIVS. Actions may have to be taken by the DIVS that are not enumerated in today's IAP. These actions would be a result of a significant change in actual or expected fire behavior over and above that anticipated at the time the IAP was prepared. These actions will be coordinated with and approved by the OSC whenever possible.

Division/Group Communication Summary

Function	Channel	Frequency RX	Frequency TX	TONE RX	TONE TX	Function	Channel	Frequency RX	Frequency TX
COMMAND	1	170.0000	166.6750	151.4	151.4	A/G TAC	13	172.3500	172.3500
NIFC T1	5	168.0500	168.0500	151.4	151.4	A/G CMD	14	169.1500	169.1500

Prepared by Anya Moline - RESL	Approved By Robin Jermyn - PSC	Date 9/1/2020	Time 1300
-----------------------------------	-----------------------------------	------------------	--------------

DIVISION ASSIGNMENT LIST		Branch	Division/Group
Incident Name		NIGHT	STRUCTURE
EAST CASTLE ZONE SQF COMPLEX		Operational Period	
		Date: 9/18/2020 to 9/19/2020 Time: 0600-0600	
Operations Personnel			
Operations Chief	Andy James (t)	Branch Director	
Safety Officer	Dan Cassidy, Gerald Vickers	Division/Group Supervisor	Derek Steidley 559-471-8611

Resources Assigned This Period

Strike Team/Task Force/ Resource Designator	Req#	Last Shift	Leader	# Persons	Drop Off Point /Time	Pick Up Point / Time
HC1 Springville	C-113	9/29	Jack Medina	20	Camp Nelson 1800	Camp Nelson 0900
S/T 5809C ENG3	E-241	9/18	Jason Elizondo	16	Camp Nelson 1800	Camp Nelson 0900
S/T 5181F ENG6	E-238	9/18	Kevin Riggi	16	Camp Nelson 1800	Camp Nelson 0900

Work Assignments

Task: Provide perimeter control support and structure defense for Camp Nelson, Pierpoint, Cedar Slope, Coy Flat and Ponderosa when conditions allow. Provide mitigation and reasonable protection for nationally significant natural resources to the extent possible while maintaining firefighter safety. Assist night divisions as directed by Night Operations.

Purpose: Protect values at risk from spreading fire by supporting perimeter control operations.

End State: Values at risk and communities are defended to the extent possible while maintaining firefighter safety as our highest priority.

Special Instructions

- Personnel to notify DIVS of potentially sensitive cultural materials.
- Castle Ambulance 3 staged at Whitsett Base Camp. Castle Ambulance 2 staged at Blackrock Ranger Station. Castle REMS 1 available to all structure divisions.
- Prioritization of all control or containment actions taken during the operational period in this Division will be at the discretion of the DIVS. Actions may have to be taken by the DIVS that are not enumerated in today's IAP. These actions would be a result of a significant change in actual or expected fire behavior over and above that anticipated at the time the IAP was prepared. These actions will be coordinated with and approved by the OSC whenever possible.

Division/Group Communication Summary

Function	Channel	Frequency RX	Frequency TX	TONE RX	TONE TX	Function	Channel	Frequency RX	Frequency TX
	COMMAND NIFC T3	See 205 6	168.0500	168.0500	151.4		151.4	A/G TAC A/G CMD	13 14
Prepared by Anya Moline - RESL	Approved By Robin Jermyn - PSC				Date	9/17/2020		Time	1300

ASSIGNMENT LIST (ICS 204 WF)

CONTROLLED UNCLASSIFIED
INFORMATION/BASIC

1. Incident Name: WEST CASTLE ZONE SQF COMPLEX	2. Operational Period: Date From: 09/18/20 Date To: 09/19/20 Time From: 0700 Time To: 0700	3. Branch Division XXI DD Page 1 of 1 Delta-Delta
--	---	---

4. Operations Personnel:	
Operations Section Chief: E. Schwab	Night Ops: J. McGough
Branch Director: M. Martinez (12)	Branch Safety:
Division/Group Supervisor: J. Cazier (T) (12)	Air Attack:

5. Resources Assigned:	** Resources Below in Bold are 12 Hour **						
Resource Identifier	ALS	LWD	Leader	Personnel	Request #	Hours	Reporting Location
STL RRU 9319L			A. Bennett	5	E-30174	0700-1900	ICP
DOZ PVT E-30115			D. Young	2	E-30115	0700-0700	ICP
DOZ PVT E-30119			L. Gill	2	E-30119	0700-0700	ICP
W/T PVT E-30139			R. Straley	1	E-30139	0700-1900	ICP
FALM O-30225				1	E-30225	0700-1900	ICP

6. Work Assignments:
 Construct dozer lines.
 Construct and improve handline.
 Structure defense and perimeter control.
 Identify and triage structures.

7. Special Instructions:
 DIVS coordinate with assigned READ to identify and avoid sensitive cultural sites where possible.

8. Communications							
Name	Ch	Function	Rx Freq	Rx Tone	Tx Freq	Tx Tone	Notes
CDF C1	1	COMMAND	151.3550N	103.5 (T8)	159.3000N	151.4 (T14)	BLUE RIDGE
CDF C11	2	COMMAND	151.1675N	103.5 (T8)	159.3975N	151.4 (T14)	CASE MTN (NORTH)
R5 T5	6	TACTICAL	167.1125N	151.4 (T14)	167.1125N	151.4 (T14)	BRANCH 21
A/G TAC W	13	A/G TAC	168.1625N		168.1625N		
CALCORD	15	MEDICAL	156.0750N	156.7 (T6)	156.0750N	156.7 (T6)	EMERGENCY COORDINATIO
GUARD 17	16	EMERGENCY	168.6250N		168.6250N	110.9 (T1)	

9. Prepared by: Name: Josh Anderson RESL Signature:
ICS 204 Date/Time: 9/17/2020 2200 Personnel Count: 11

ASSIGNMENT LIST (ICS 204 WF)

CONTROLLED UNCLASSIFIED
INFORMATION//BASIC

1. Incident Name: WEST CASTLE ZONE SQF COMPLEX	2. Operational Period: Date From: 09/18/20 Date To: 09/19/20 Time From: 0700 Time To: 0700	3. Branch Division XXI MM
---	---	--

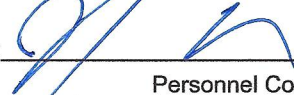
4. Operations Personnel:		Page 1 of 1 Mike-Mike
Operations Section Chief: E. Schwab	Night Ops: J. McGough	
Branch Director: M. Martinez (12)	Branch Safety:	
Division/Group Supervisor: A. Estabrook (T) (12) / M. Drum (T) (12)	Air Attack:	

5. Resources Assigned:		** Resources Below in Bold are 12 Hour **					
Resource Identifier	ALS	LWD	Leader	Personnel	Request #	Hours	Reporting Location
STC SLU 9340C			L. Ermigarat	16	E-30157	0700-1900	ICP
CRW TLC OAK VALLEY			R. Torress	19	C-30023	0700-1900	ICP
CRW KRN Crew 11			M. Henry	22	C-30026	0700-1900	ICP
DOZ PVT E-30117			C. Hubbs	1	E-30117	0700-1900	ICP
DOZ PVT E-30155			M. Hooper	1	E-30155	0700-1900	ICP
DOZ PVT E-30182			J. Kurz	2	E-30182	0700-0700	ICP
W/T PVT E-30137			B. Rodgers	2	E-30137	0700-0700	ICP
W/T PVT E-30138			N. Elliott	1	E-30138	0700-1900	ICP
W/T PVT E-30179			R. Ertl	1	E-30179	0700-1900	ICP
FALM E-30226			T. Uanowiak	2	E-30226	0700-1900	ICP
HEQB BRAZAEI			S. Brazael	1	O-30234	0700-0700	ICP
READ ZARAGOZA			Zaragoza	1		0700-1900	ICP

6. Work Assignments:
 Construct dozer lines.
 Construct and improve handline.
 Structure defense and perimeter control.
 Identify and triage structures.

7. Special Instructions:
 DIVS coordinate with assigned READ to identify and avoid sensitive cultural sites where possible.

8. Communications							
Name	Ch	Function	Rx Freq	Rx Tone	Tx Freq	Tx Tone	Notes
CDF C1	1	COMMAND	151.3550N	103.5 (T8)	159.3000N	151.4 (T14)	BLUE RIDGE
CDF C11	2	COMMAND	151.1675N	103.5 (T8)	159.3975N	151.4 (T14)	CASE MTN (NORTH)
CDF T25	7	TACTICAL	159.2775N	192.8 (T16)	159.2775N	192.8 (T16)	BRANCH 21
A/G TAC W	13	A/G TAC	168.1625N		168.1625N		
CALCORD	15	MEDICAL	156.0750N	156.7 (T6)	156.0750N	156.7 (T6)	EMERGENCY COORDINATIO
GUARD 17	16	EMERGENCY	168.6250N		168.6250N	110.9 (T1)	

9. Prepared by: Name: Josh Anderson RESL Signature: 

ICS 204 Date/Time: 9/17/2020 2200 Personnel Count: 69

ASSIGNMENT LIST (ICS 204 WF)

CONTROLLED UNCLASSIFIED
INFORMATION//BASIC

1. Incident Name: WEST CASTLE ZONE SQF COMPLEX	2. Operational Period: Date From: 09/18/20 Date To: 09/19/20 Time From: 0700 Time To: 0700	3. Branch Division XXV PP
---	---	--

4. Operations Personnel: Page 1 of 1 Papa-Papa

Operations Section Chief: E. Schwab	Night Ops: J. McGough
Branch Director: D. Esades (12)	Branch Safety:
Division/Group Supervisor: T. Attebury (12)	Air Attack:


5. Resources Assigned:	** Resources Below in Bold are 12 Hour **							
Resource Identifier	ALS	LWD	Leader	Personnel	Request #	Hours	Reporting Location	
T/F KRN 5812			S. Riley	17	E-30167	0700-1900	ICP	
ENG TUU 4159			R. Avila	4	E-30169	0700-0700	ICP	
ENG TUU 4173			D. Johnson	4	E-30170	0700-0700	ICP	
ENG TUU 4184			S. Hughes	4	E-30171	0700-0700	ICP	
ENG TUU 4190			N. Perricelli	4	E-30172	0700-0700	ICP	
STG FKU 9435G (CDCR)			R. Castillo	27	C-30003	0700-1900	ICP	
CRW TUU Crew 1			D. Abbott	16	C-30027	0700-1900	ICP	
CRW TUU Crew 2			R. High	16	C-30025	0700-1900	ICP	
STL BDU 9353L			M. Breese	9	E-30175	0700-0700	ICP	
DOZ PVT E-30118			M. Reichenberger	1	E-30118	0700-1900	ICP	
DOZ PVT E-30150				2	E-30150	0700-0700	ICP	
DOZ PVT E-30153			G. Van Gaasbeek	2	E-30153	0700-0700	ICP	
W/T PVT E-30135			R. Reyes	1	E-30135	0700-1900	ICP	
W/T PVT E-30177					E-30177	0700-1900	ICP	
W/T PVT E-30136			D. Dixon	2	E-30136	0700-0700	ICP	
HEQB PRANDINI			A. Prandini	1	O-30220	0700-0700	ICP	
HEQB GONZALEZ			M. Gonzalez	1	O-30235	0700-0700	ICP	
READ CHARTIER			B. Chartier	1	O-30233	0700-1900	ICP	
READ WINGATE						0700-1900	ICP	

6. Work Assignments:
Construct and hold control lines.
Hold the current fire on control lines.

7. Special Instructions:
DIVS coordinate with assigned READ to identify and avoid sensitive cultural sites where possible.

8. Communications

Name	Ch	Function	Rx Freq	Rx Tone	Tx Freq	Tx Tone	Notes
CDF C1	1	COMMAND	151.3550N	103.5 (T8)	159.3000N	151.4 (T14)	BLUE RIDGE
CDF C11	2	COMMAND	151.1675N	103.5 (T8)	159.3975N	151.4 (T14)	CASE MTN (NORTH)
CDF T26	8	TACTICAL	159.2925N	192.8 (T16)	159.2925N	192.8 (T16)	BRANCH 25
A/G TAC W	13	A/G TAC	168.1625N		168.1625N		
CALCORD	15	MEDICAL	156.0750N	156.7 (T6)	156.0750N	156.7 (T6)	EMERGENCY COORDINATIO
GUARD 17	16	EMERGENCY	168.6250N		168.6250N	110.9 (T1)	

9. Prepared by: Name: Josh Anderson RESL Signature: 

ICS 204 Date/Time: 9/17/2020 2200 Personnel Count: 112

ASSIGNMENT LIST (ICS 204 WF)

CONTROLLED UNCLASSIFIED
INFORMATION//BASIC

1. Incident Name: WEST CASTLE ZONE SQF COMPLEX	2. Operational Period: Date From: 09/18/20 Date To: 09/19/20 Time From: 0700 Time To: 0700	3. Branch Division XXV TT
---	---	--


4. Operations Personnel:		Page 1 of 1 Tango-Tango
Operations Section Chief: E. Schwab	Night Ops: J. McGough	
Branch Director: D. Esades (12)	Branch Safety:	
Division/Group Supervisor: C. Usher (T)(12)	Air Attack:	

5. Resources Assigned:	** Resources Below in Bold are 12 Hour **						
Resource Identifier	ALS	LWD	Leader	Personnel	Request #	Hours	Reporting Location
ENG TUU 4161			W. Whitendale		E-30173	0700-0700	ICP
ENG TLC RESCUE 14						1900-0700	ICP
STG RRU 9316G (CDCR)			C. Wright	33	E-30028	0700-0700	ICP
CRW SLU Fuels 3449			L. Elliot	8	C-30022	0700-1900	ICP
CRW TCU Fuels 4449			T. Pittman	7	C-30024	0700-1900	ICP
DOZ TUU 4141			D. Peterson	2	E-30176	0700-1900	ICP
DOZ TUU 4143			K. Mittel	2	E-30181	0700-1900	ICP
DOZ PVT E-30116			D. Young	2	E-30115	0700-0700	ICP
W/T TLC 15				1	E-13	0700-0700	ICP
W/T PVT E-30180			M. Lane	1	E-30180	0700-0700	ICP
W/T PVT E-30226			J. Lovato	1	E-30226	0700-1900	ICP
MAS SLU Fuels Crew			M. Hider	1	E-30163	0700-1900	ICP
MAS TCU Fuels Crew			L. Minor	1	E-30162	0700-1900	ICP

6. Work Assignments:
Construct and hold control lines.
Hold the current fire on control lines.

7. Special Instructions:
DIVS coordinate with assigned READ to identify and avoid sensitive cultural sites where possible.

8. Communications							
Name	Ch	Function	Rx Freq	Rx Tone	Tx Freq	Tx Tone	Notes
CDF C1	1	COMMAND	151.3550N	103.5 (T8)	159.3000N	151.4 (T14)	BLUE RIDGE
CDF C11	2	COMMAND	151.1675N	103.5 (T8)	159.3975N	151.4 (T14)	CASE MTN (NORTH)
CDF T28	9	TACTICAL	151.1825N	192.8 (T16)	151.1825N	192.8 (T16)	BRANCH 25
A/G TAC W	13	A/G TAC	168.1625N		168.1625N		
CALCORD	15	MEDICAL	156.0750N	156.7 (T6)	156.0750N	156.7 (T6)	EMERGENCY COORDINATIO
GUARD 17	16	EMERGENCY	168.6250N		168.6250N	110.9 (T1)	

9. Prepared by: Name: Josh Anderson RESL Signature: 

ICS 204 Date/Time: 9/17/2020 2200 Personnel Count: 59

AIR OPERATIONS SUMMARY 220		Prepared By: Dennis A. Morton	Prepared: 09/17/2020		Prepared Time: 2000 hrs.	
1. INCIDENT NAME: SQF COMPLEX		2. OPERATIONAL PERIOD 09/18/2020		START TIME: 0800	END TIME: 2000	SUNRISE: 0641
SUNSET: 1858						

3. REMARKS (Safety Notes, Hazards, Air Operations Special Equipment, etc.). 1. Smoky conditions can hamper our aviation operations adhere to visibility limitations, and DO NOT be pressured into accepting a mission that you know or feel is unsafe! 2. <u>Ensure visibility and winds are adequate to safely conduct flight operations.</u> 3. <u>Ensure safe vertical & horizontal separation between aircraft in smoky conditions.</u> 4. <u>Utilize check points and call in and out of the dips.</u> 5. <u>If you see a UAS on your division report it up the chain of command to Air Operations, it may or may not be a friendly!</u> 6. <u>Assess mission complexity and the Benefit vs Risk of the mission.</u> <i>(Terminate air operations at sunset...use last ½ hour for RTB. (exceptions allowed—communicate intent)</i>			4. READY ALERT AIRCRAFT: H-407 Hoist Day/Night Capable Located in Visalia, CA Sharing with the Creek Fire Order through Communications/Air Attack See Medical Plan in the IAP		5. TFR: 0/3991 A-285 Freq: 123.725 Altitude: From the surface up to and including 14,000 feet MSL Polygon see NOTAM Latitude: Longitude: 36°25'00"N 118°40'00"W 36°25'00"N 118°12'30"W 35°57'00"N 118°12'30"W 36°03'00"N 118°53'30"W 36°19'00"N 118°53'30"W	
---	--	--	--	--	---	--

6. PERSONNEL	NAME	PHONE #	7. FREQUENCIES	AM	FM	8. FIXED-WING Avail/ Type/ Make-Model/ N#/ Base
AOBD East	Dennis A. Morton	406.660.2318	A/A Fixedwing A-6		165.9875	AIRTANKERS: ORDER THRU ATGS
AOBD West	Burke Kremensky	619.592.9122	A/A Briefing A-167	132.2750		ORDER TYPE 1 HELICOPTERS THROUGH ATGS
ASGS	John McKee	406.370.7028	A/A (Rotor) TFR A-7	123.7250		ORDER AIR TANKERS THROUGH ATGS
ASGS	Daniel Sepulveda	909.374.8944	A/G Command A-58	CMD	169.1500	ATGS/HLCO Platforms: N47TT – AC690 (Craw) N839PA-AS 350B3 (Will) 410-OV-10 Bronco (Tashiro)
ATGS	Justin Tashiro	559.786.3788	A/G Tactical West Branch A-166	TAC	168.1625	
ATGS	Ken Craw	559.280.6969	A/G Tactical East Branch A-5	TAC	172.3500	
HLCO	Travis Will	208.841.1898	CALCORD/Medivacs		156.0750	
HEBM Porterville	Lee Stewart	949.591.4131	DECK		163.100	
HEBM(T)	Travis Carson	208.630.3496	Tanker base Ramp	123.9750		*PSD DISCREET ONLY - *170.0750* A-141 Email daily aircraft costs to: portervillehelibase@gmail.com
ATBM Porterville	Raul Contreras	559.789.0191	Air Guard		168.6250 (110.9 TX)	Porterville Aviation Desk: 559.782.3120 Ext.701

9. HELICOPTERS

FAA N#	TY	MAKE/ MODEL	BASE	START	AVAIL	REMARKS	FAA N#	TY	MAKE/ MODEL	BASE	START	AVAIL	REMARKS
948CH	1	CH-47D	PVT	0800	1200	A-31	H-522	2	205 A1 ++	Peppermint	0800	0830	A-123
245CH	1	BV-234	PVT	0800	0830	A-53	H-523	2	205 A1 ++	Blackrock	0800	0830	A-11
135BH	1	S-70	PVT	0800	0830	A-76	H-535	3	Bell 407	PVT	0800	0830	A-39
699RH	1	KMAX	PVT	0800	0830	A-32	H-552	3	AS-350B3	PVT	TBD	TBD	A-297
							839PA	3	AS-350B3	PVT	0800	0830	HLCO/A-146

10. TASK/ MISSION/ ASSIGNMENT (Type/ function includes: Air Tactical, Retardant, Recon, Personnel Transport, Bucket Operations, SAR, etc.)					
TYPE/FUNCTION	PRIORITY	NAME OF PERSONNEL OR CARGO (If applicable) or instructions for tactical aircraft	MISSION START	FLY FROM	FLY TO
ATGS		Provide continuous coverage over the fire as smoke and weather permits.	0900	PVT	Fire
Initial Attack		Initial Attack assistance as requested.	TBD	PVT/Peppermint	IA
Medevac		**See Medical Plan in IAP – Review during Division Breakouts**	TBD		Fire
Water Drops		As needed and approved by OPS, order through ATGS/HLCO	0900	PVT	Fire
Recon		Fire reconnaissance as requested.	0900	PVT	Fire
PSD		As needed and approved by OPS	0900	PVT	Fire
OTHER		(Back Haul, Re-Supply, Crew Movement) Place all orders through communications	0900	Peppermint	Fire

Helibase, Dip Sites, Pick Up Sites, etc.			Helibase, Dip Sites, Pick Up Sites, etc.		
Porterville HB	36 01.427' N 118 4.112' W	500'	Lookout IP, Enter 10000'	36 3.89' N, 118 27.51' W	
Peppermint HB	36 4.355' N 118 32.500' W	7500'	Saddle Check	36 10.88' N 118 28.59' W	
H-3 Black Rock T2	36 5.609' N, 118 15.666' W	8100'	Ridge Check	36 8.55' N 118 26.72' W	
Ranch Helispot	36 09.053' N 118 48.063' W	1200'	Needle Check	36 5.89' N 118 27.59' W	
			Walter Check	36 15.43' N 118 36.11' W	
H-1 T2	36 9.852' N, 118 26.985' W	6600'			
H-2 T2	36 5.838' N, 118 26.806' W	6000'			
H-12 Camp Nelson	36 08.368' N 118 36.917' W	4800'			
H-30	36 20.809' N 118 24.512 W	6500'			
(MRB) Camp Nelson	36 08.402' N, 118 36.854' W	4800'			
Freeman "NR"	36 6.875' N, 118 27.551' W	5100'			
Beach Dip (X, U, N Only)	36 6.931' N, 118 17.824' W	7700'	C31	36 18.077' N 118 27.340' W 10800'	
Quaking Aspen Dip T2, 3 ONLY!	36 07.285' N, 118 32.815' W	7000'	C4	36 10.909' N 118 35.882' W 9100'	
			C11	36 0.630' N 118 23.448' W 9900'	

Visibility Limitations VFR Flight Helicopters Day 1/2 statute mile Clear of clouds

Flights above ground level	Flight Permitted in Winds Less than / Maximum Gust Spread		
	Type 1 Helicopters	Type 2 Helicopters	Type 3 Helicopters
More than 500' AGL	<50kts / Gusts: N/A	<50kts / Gusts: N/A	<50kts / Gusts: N/A
Less than 500' AGL	<40kts / Max Gust Spread: 15kts	<40kts / Max Gust Spread: 15kts	<30kts / Max Gust Spread: 15kts

Leaders create culture. It is their responsibility to change it. Top administrators must take responsibility for risk, failure, and safety by remaining alert to the effects their decision have on the system. Leaders are responsible for establishing the conditions that lead to their subordinates' successes or failures."

INCIDENT RADIO COMMUNICATIONS PLAN			Incident Name EAST CASTLE ZONE SQF COMPLEX			Date/Time Prepared 9/18/2020			Operational Period Date/Time 9/18/20 0600 - 9/19/20 0600		
Ch #	Function	Channel Name/Trunked Radio System Talkgroup	Assignment	RX Freq	N or W	RX Tone/NAC	TX Freq	N or W	Tx Tone/NAC	Mode A, D or M	Remarks
1	CMD REPEATER	NIFC C4	DIV A/B/Y/Z	170.0000		151.4	166.6750		151.4	A	JORDON PEAK (TONE 14)
2	CMD REPEATER	NIFC C11	DIV BC L	170.6875		151.4	166.5750		151.4	A	SHERMAN PEAK (TONE 14)
3	CMD REPEATER	NIFC C31	DIV BC L / W	172.5500		151.4	162.1875		151.4	A	COYOTE PEAK (TONE 14)
4	FOREST REPEATER	SQF CH2	ALL/BACKUP	169.9000			165.7000		103.5	A	SQF FOREST RPTR DISPATCH
5	TACTICAL CHNL	NIFC T1	E Z S	168.0500		151.4	168.0500		151.4	A	EAST ZONE SEARCH
6	TACTICAL CHNL	NIFC T3	DIV B	168.6000		151.4	168.6000		151.4	A	SQF TACTICAL (TONE 14)
7	TACTICAL CHNL	NIFC T5	DIV W	166.7250		151.4	166.7250		151.4	A	SQF TACTICAL (TONE 14)
8	TACTICAL CHNL	NIFC T6	DIV Y / Z	166.7750		151.4	166.7750		151.4	A	SQF TACTICAL (TONE 14)
9	TACTICAL CHNL	NIFC T7	BC L	168.2500		151.4	168.2500		151.4	A	SQF TACTICAL (TONE 14)
10	TACTICAL CHNL	R5 T5	CAL FIRE TAC	167.1125		151.4	167.1125		151.4	A	MUTUAL TAC FREQ CAL FIRE
11	TACTICAL CHNL	R5 T6	NELSON	168.2375		151.4	168.2375		151.4	A	STRUCTURE TAC (TONE 14)
12	TACTICAL CHNL	VFIRE 25	UNASSIGNED	154.2875		156.7	154.2875		156.7	A	STRUCTURE TAC (TONE 6)
13	AIR TO GROUND	A/G TAC	A/G TAC	172.3500			172.3500			A	A/G TAC
14	AIR TO GROUND	A/G CMD	A/G CMD	169.1500			169.1500			A	A/G CMD OVERHEAD ONLY
15	TACTICAL CHNL	CALCORD	MEDEVAC	156.0750		156.7	156.0750		156.7	A	CALCORD MEDEVAC (T 6)
16	AIR GUARD	GRD 15	EMCY ONLY	168.6250			168.6250		110.9	A	AIR GUARD
Prepared by (Communications Unit) COMM UNIT 760-379-1567 / COML DUSTIN SENE 406.581.9816						Incident Location SEQUOIA NF County _____ State CA Latitude _____ N Longitude 3-7-77 W					

The convention calls for frequency lists to show four digits after the decimal place, followed by either an "N" or a "W", depending on whether the frequency is narrow or wide band. Mode refers to either "A" or "D" indicating analog or digital (e.g. Project 25) or "M" indicating mixed mode. All channels are shown as if programmed in a control station, mobile or portable radio. Repeater and base stations must be programmed with the Rx and Tx reversed.

MEDICAL PLAN (ICS 206 WF)

Controlled Unclassified Information//Basic

1. Incident/Project Name				2. Operational Period			
EAST CASTLE ZONE SQF COMPLEX				Date/Time 09/18/20 0600hrs-09/19/20 0600hrs			
3. Ambulance Services							
Name	Complete Address	Phone & EMS Frequency	Advanced Life Support (ALS) Yes No				
Imperial Ambulance (west side)	28551 Hwy 190, Porterville, CA	559-687-3309	<input checked="" type="checkbox"/>		<input type="checkbox"/>		
Hall Ambulance (east side)	1001 21st St, Bakersfield	661-327-4111	<input checked="" type="checkbox"/>		<input type="checkbox"/>		
Liberty Ambulance (Castle Ambulance 4)	ICP (Kern Valley High School)	Command frequency	<input checked="" type="checkbox"/>		<input type="checkbox"/>		
4. Air Ambulance Services							
Name	Phone	Type of Aircraft & Capability					
**Kern County FD H407 Visalia	657-464-7830	Incident Primary Air Rescue, Bell 205, ALS, 24/7 Hoist					
Kern County FD H408	657-305-5433	Air Rescue, Bell 205, ALS, 24/7 Hoist					
Skylife	800-305-5433	ALS, No Hoist, requires 100x100 LZ					
CHP H40 (Fresno)	559-262-0400	Air ambulance, ALS 24/7, DAY HOIST ONLY, NIGHT STAFFING ON CALL AFTER 1800 HRS					
US COAST GUARD	REGIONAL COMMAND CENTER 510-437-3701	AIR RESCUE, HOIST 24/7, NO IN-FLIGHT MEDICAL					
5. Hospitals							
Name Complete Address	GPS Datum – WGS 84 Coordinate Standard Degrees Decimal Minutes DD° MM.MMM' N - Lat DD° MM.MMM' W - Long	Travel Time Air Gnd	Phone	Helipad Yes No	Level of Care Facility		
Kern Valley Hospital 6412 Laurel Ave Lake Isabella, CA	Lat: 35 38.07'N	30 Min 2-3Hr	760-379-2681	<input checked="" type="checkbox"/>	<input type="checkbox"/>	Emergency Room	
	Long: 118 24.35W						
	VHF:						
Sierra View Med Ctr 465 W Putnam Ave Porterville, CA	Lat:	30 Min 2-4.5 hrs	559-784-1110	<input type="checkbox"/>	<input checked="" type="checkbox"/>	Emergency Room	
	Long:						
	VHF:						
Kaweah Delta Health 400 W. Mineral King Ave. Visalia, CA 93291	Lat: 36 19.65'N	30 Min 2.5-5 Hr	559-624-2000	<input checked="" type="checkbox"/>	<input type="checkbox"/>	Level 2 Trauma	
	Long: 119 17.676'W						
	VHF: 468.0375 PL141.3 DTMF 3211 12K lb pad limit						
Kern Medical Center 1700 MT Vernon Ave.Bakersfield, CA 93306	Lat: 35 22.95'N	45 min 2.5-3.75 hr	661-326-2000	<input checked="" type="checkbox"/>	<input type="checkbox"/>	Level 2 Trauma	
	Long: 118 58.182'W						
	VHF: 463.100 12K lb pad limit						
Community Regional Medical Center 2823 Fresno St.Fresno, CA 93721	Lat: 36 44.568'N	1 hr 3-5.25 hr	559-459-6000 ER 559-459-4220	<input checked="" type="checkbox"/>	<input type="checkbox"/>	Level 1 Trauma/ Burn Center	
	Long: 119 47.094'W						
	VHF: 123.05 key 5times for lights 22K lb pad limit						
6. Division Branch Group		Area Location Capability					
<h1 style="font-size: 2em;">Div A/ Ponderosa</h1>		EMS Responders & Capability:		Brain Boulware, EMPF; Larry Hoqueisson, EMPF			
		Equipment Available on Scene:		ALS			
		Medical Emergency Channel:		Command			
		ETA for Ambulance to Scene:					
		Air:		30 mins			
		Ground:		2 hrs			
		Approved Helispot:		H20			
		Lat:		36 10.960'N			
Long:		118 29.259'W					

MEDICAL PLAN (ICS 206 WF)

Controlled Unclassified Information//Basic

1. Incident/Project Name	2. Operational Period	
<h2>Div B</h2>	EMS Responders & Capability:	Medic team 1 (3 persons)
	Equipment Available on Scene:	ALS, BLS, Extraction, UTV
	Medical Emergency Channel:	Command
	ETA for Ambulance to Scene:	
	Air:	30 min
	Ground:	2 hrs
	Approved Helispot:	H 20
	Lat:	36 10.960°N
	Long:	118 29.259°W
<h2>Div Y/Z</h2>	EMS Responders & Capability:	Tom Zamora, EMPF; Royce Copeman, EMPF; Ambulance 3
	Equipment Available on Scene:	ALS; 4x4 ALS ambulance
	Medical Emergency Channel:	Command
	ETA for Ambulance to Scene:	
	Air:	30 min
	Ground:	2 hrs
	Approved Helispot:	H1
	Lat:	36 9.852°N
	Long:	118 26.985°W
<h2>Backcountry Lima</h2>	EMS Responders & Capability:	Joshua Terry, EMPF; Castle Ambulance 2; Tommy Kavenaugh, EMPF; Matthew Heckman, EMPF; Tim Higeons, EMTF; REMS 2 (4 personnel)
	Equipment Available on Scene:	ALS; Extraction; UTV; ALS Ambulance
	Medical Emergency Channel:	Command
	ETA for Ambulance to Scene:	
	Air:	35 mins
	Ground:	3 hrs
	Approved Helispot:	H 3
	Lat:	36 5.609°N
	Long:	118 15.666°W
<h2>Structure Nelson</h2>	EMS Responders & Capability:	Chris Inman, EMPF; Castle Ambulance 5
	Equipment Available on Scene:	ALS; BLS; 4x4 ALS ambulance
	Medical Emergency Channel:	Command
	ETA for Ambulance to Scene:	
	Air:	35 mins
	Ground:	3 hrs
	Approved Helispot:	Peppermint Helibase
	Lat:	36 4.355°N
	Long:	118 32.500°W
<h2>East Zone Surge</h2>	EMS Responders & Capability:	Chris Laponis EMPF
	Equipment Available on Scene:	ALS
	Medical Emergency Channel:	Command
	ETA for Ambulance to Scene:	
	Air:	30 mins
	Ground:	2 hrs
	Approved Helispot:	H20
	Lat:	36 10.960°N
	Long:	118 29.259°W
<h2>Night Div Y/Z</h2>	EMS Responders & Capability:	Steve Devincinzi; EMTF, Castle Ambulance 1
	Equipment Available on Scene:	BLS; ALS ambulance
	Medical Emergency Channel:	Command
	ETA for Ambulance to Scene:	
	Air:	30 min
	Ground:	2 hrs
	Approved Helispot:	H1
	Lat:	36 9.852°N
	Long:	118 26.985°W
Emily Ellick-Flettire-405-593-3369	09/16/2020	Dan Cassidy SOF1 406.250.4599 09/16/2020

MEDICAL PLAN (ICS 206 WF)
Controlled Unclassified Information//Basic
ASSIGNMENT-SPECIFIC MEDICAL EMERGENCY ACTION PLAN

Pre-Planning for today's assignment – See Page 2 IRPG

What are the likely hazards that could cause injuries? What kind of severe injuries?		
Who is the likely in-charge DIVS or overhead for an emergency in your assigned area today? (i.e. "Division Zulu")		
Who are the Medical personnel assigned to your part of the incident? What are their capabilities?		
Other Emergency Responders: fire dept, crash rescue, ambulance?		
Communications: Command channel, Air to Ground, Medical helicopters, local rescue/medical?		
Transportation methods available	Ground vehicle, drop point, coordinates, travel route?	
	Aircraft I.D, helispot names, coordinates? Hoist capable, internal transport	
	Other available methods - contingency	
Most likely workforce for evacuation		

Response checklist

Who takes charge?

- DIVS or designated Overhead manages the overall scene and evacuation process.
- Medical personnel and emergency responders manage patients and conduct rescues.
- OPS and IC make command decisions so the emergency can be given full attention and management. They continue to manage ongoing incident operations.

Response sequence:

- First, secure the scene and protect responders and patients from further injury.
- Clear the Command channel for "Emergency Traffic only" if this is a critical emergency. If not, inform Communications of non-critical-emergency status and use normal communications.
- Contact closest Medical personnel and DIVS or designated Overhead for response.
- Notify Communications to initiate Accident Action Plan response.

Information for Communications: (See Medical Incident Report, page 108, IRPG)

- Type and extent of injuries?
- Airway or breathing problems? Serious bleeding?
- Is an EMT present or needed? Are Paramedics (Advanced Life Support) needed?
- Specific location of patients (Lat/Long, access route, DP#, helicopter Landing Zone)?
- What type of transport is needed? Helicopter medevac, hoist, ambulance or ground transport?
- Name of contact person in charge of the scene.
- Do not use names of patients at any time.
- **Medical Emergency Responders confer with Medical Unit Leader and DIVS or designated Overhead to determine if this is a critical emergency and what type of transport is needed.**



HUMAN RESOURCE MESSAGE

There is zero tolerance for drugs and alcohol on this fire incident.



I survive because the fire within me burns brighter than the fire around me.

Never Give Up!

Debby Hassel, HRSP (406) 274-7985

hrspfire@gmail.com

COVID-19 Reminders

Make prevention part of your routine!

WILDLAND FIRE COVID-19 SCREENING TOOL

Today or in the past 24hrs, have you had any of the following symptoms?

Symptoms:

Cough?

Shortness of breath or difficulty breathing?

Fever? Chills?

Muscle pain, outside that expected for your level of exertion?

Sore throat?

New loss of taste or smell?

Excessive fatigue?

Headache?

Congestion or runny nose?

Nausea or vomiting

Diarrhea?

Take temperature with no-touch thermometer, if available

What to do if you are experiencing COVID-19 symptoms?

- Put on a mask if not already wearing one.
- Notify your supervisor and self-isolate from others immediately.
- Notify Line Medic or Medical Unit to evaluate symptoms.
- Document contacts you had the two days before your symptoms began.
- Wait for further instructions from the Medical Unit and COVID Team.

How do I know if I am a 'close contact' of a person who is presumptive positive or has tested positive for COVID-19?

For COVID-19, a **close contact** is anyone who was within 6 feet of an infected person for at least 15 minutes. An infected person can spread COVID-19 starting from 48 hours (or 2 days) before the person had any symptoms or tested positive for COVID-19.

*Approximately 40-50% of people with COVID-19 will not show any symptoms. It's important to utilize preventative strategies (masks, spacing, hand hygiene) prior to someone displaying symptoms.

Do your part to minimize the spread of COVID-19 and reduce your risk of exposure.

- Maintain 6 ft or greater spacing between you and others.
- Wear a mask, especially when unable to maintain social distancing, in public settings, including briefings.
- Frequently wash your hands with soap and water or a hand sanitizer that is at least 60% alcohol.
- Wash/sanitize frequently touched surfaces.

The best way to prevent illness and continue to fight fire is to avoid being exposed to this virus.

COVID questions or concerns?

Call the COVID Hotline

949-330-9973

FINANCE MESSAGE

OPTIONS FOR SUBMITTING TIME:

1. **Fillable PDF CTR/Shift Ticket:** QR code to the fillable forms are included below. If you do not have QR capabilities finance can e-mail you the forms directly.



2. **Hard Copy CTR/Shift Ticket:** Fill out a hard copy CTR, snap a picture and email/text that into finance. If you send in a picture, please make sure it is legible and includes the supervisor's signature at the bottom! Please make sure to include your phone number in the **Remarks** in case we have questions.
3. OR you may turn in your actual hard copy as usual at Whitsett Spike Camp & Troy Meadow.
 - Please try to submit time at least every other day
 - H-Pay justifications are still required on your CTRs – “H = Hazard Pay” is not sufficient

****CONTRACTED EQUIPMENT PLEASE CONTACT FINANCE IF YOU WANT TO START THE PROCESS OF AN INTERIM PAYMENT****

2020.castle.finance@firenet.gov

Finance Main Line: **949-591-4123**

TIP:

*****In order to use fillable pdf forms, you must have some version of Adobe Acrobat downloaded on your device. If you have any issues opening the documents call finance for assistance. *****

*****REMINDER*****

- BE SURE to call Finance **1 day** prior to your scheduled DMOB to ensure time is complete at **949-591-4123**
- Only 1 representative per resource should go to Finance at ICP to officially close out time.

DEMOBILIZATION IS NOW REMOTE!!

Demobilization Steps:

1. ALL accountable property checked-out from the incident must be returned (i.e. communications, supply). Items may be returned at Whitsett Base Camp or ICP.
2. Submit all finance documentation (time must be projected for travel home).
 - a. Abide by scheduled DMOB time or call Finance for an unscheduled DMOB.
 - b. Government agency resources that would like to close out their time 100% remotely should call **949-591-4123** when they are close to their DMOB date and make necessary arrangements to complete the process.
3. Scan the QR code on the front of the IAP to complete the DMOB process and start your travel home. **DO NOT LEAVE the incident until you have confirmed with Demobilization Unit Leader at 951-235-1568. If you have questions, please call!**

EXTENSIONS & RR

- Extensions or RR's **MUST be requested by your incident supervisor** and approved by your home unit supervisor prior to being processed.
- Extensions forms can be obtained from DMOB or the plans representative onsite at Camp Whitsett.

Are You a TRAINEE?

1. Scan these codes to access the fillable *trainee* information forms. Send photo of qualification cards and task book cover to: matthew.boss@usda.gov



Registration



Check-out



Exit Interview



FINANCE

S# PROCESS

FEDERAL RESOURCES ONLY

- **PROPERTY LOSS-REPAIR-REPLACE OF NON-NATIONAL FIRE EQUIPMENT SYSTEM (NFES) OR NON-STANDARD CACHE ITEMS**

- **CAN IT BE REPLACED AT SUPPLY?**

1. **General message is needed (ICS 213) with contact information NAME/PHONE #/EMAIL/RESOURCE ORDER # send to Supply at 2020.castle.ordering@firenet.gov**

- **IF YOU NEED AN S# FOR REPLACEMENT BECAUSE SUPPLY DOES NOT HAVE IT PLEASE DO THE FOLLOWING**

2. **General message is needed (ICS 213) with contact information NAME/PHONE #/EMAIL/RESOURCE ORDER #. A description of property damage or loss needs to be documented and pictures of damaged items. Please send to finance at 2020.castle.finance@firenet.gov**

3. **We have Comp/Claims on site! Please reach out to us with any questions at 406-363-8956 or 406-366-3724.**

Things to Know - Resource Message

SQF Complex 9/16/20

Reporting of Cultural Sites

- Do not use the radio. Looters listen to our frequencies and will note where you find things.
- Grab a GPS point, bump it up the chain of command, or directly inform a READ.

Trash, Litter, and Food

- Please remove all trash, litter, and uneaten food from the fireline.
- Food items left on the line or at camp attract wildlife like bears, skunks, and rodents.

Sensitive Areas

- REAFs will be flagging sensitive areas during the incident.
- Please avoid going into these areas.
- The two flagging colors used are a strip of blue and a strip of red.
- For more information, please consult with a REAF.

Keep Up the Good Work!

Continue to do good work for cultural and natural resources by doing the following:

- Picking up trash and litter.
- Removing unused flagging.
- Sharing information and working alongside REAFs.
- When moving on to a new area, leaving the old area better than you found it.

Tree Identification – Giant Sequoia vs Incense Cedar



Giant Sequoia – The namesake of the forest and the largest tree on Earth, the giant sequoia is an impressive tree. It does not have a very large cone. It is about the size and shape of a chicken egg. Its needles are similar to an incense cedar but are rounded and prickly to the touch. Sequoia bark is red and is soft and shreds easily.



Incense Cedar – Many mistake incense cedar trees for small giant sequoia trees. They, however, do not produce a traditional shaped cone. Instead their seeds are on six cone scales that form a pod-like cone that splits when it dries. Their needles, though scale-like, are flattened and not prickly. Their bark, though red like a sequoia, is hard and doesn't shred.

09/18/2020

TENTATIVE RELEASE

CASTLE US-CA-SQF-002541

CREWS

C-11 0800 (CC) SEQUOIA

OVERHEAD

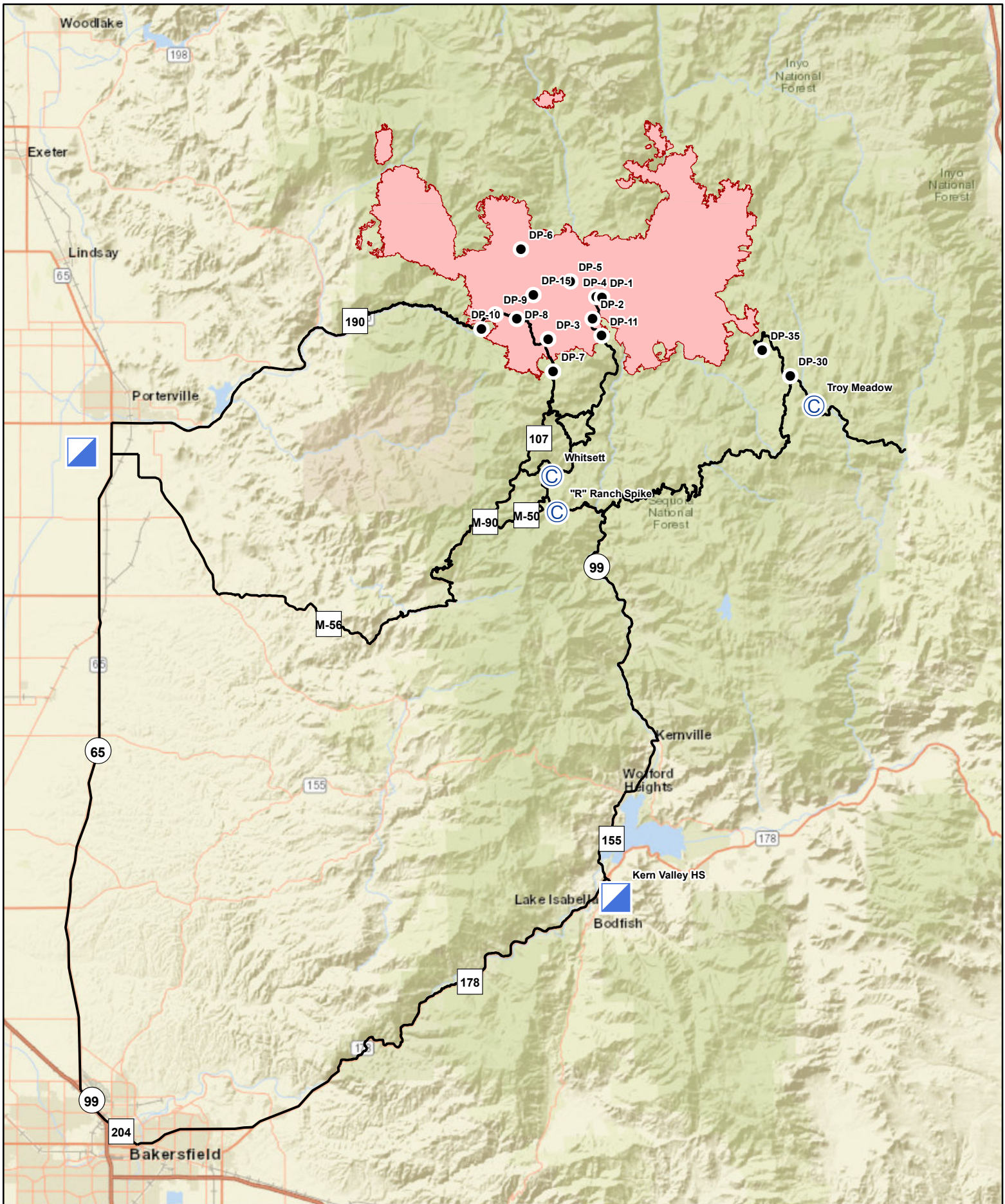
O-233	0815	(EMPF)	FISCHER, SILAS ANTON
O-587	0830	(HMGB)	GOLDSTEIN, STEFAN
O-579	1000	(EMTF)	GARCIA, PATRICK EUSEBIO
O-565	1800	(HECM)	GOOSMAN, REBECCA



Northern Rockies Team 1
EAST CASTLE ZONE SQF COMPLEX

PHONE LIST

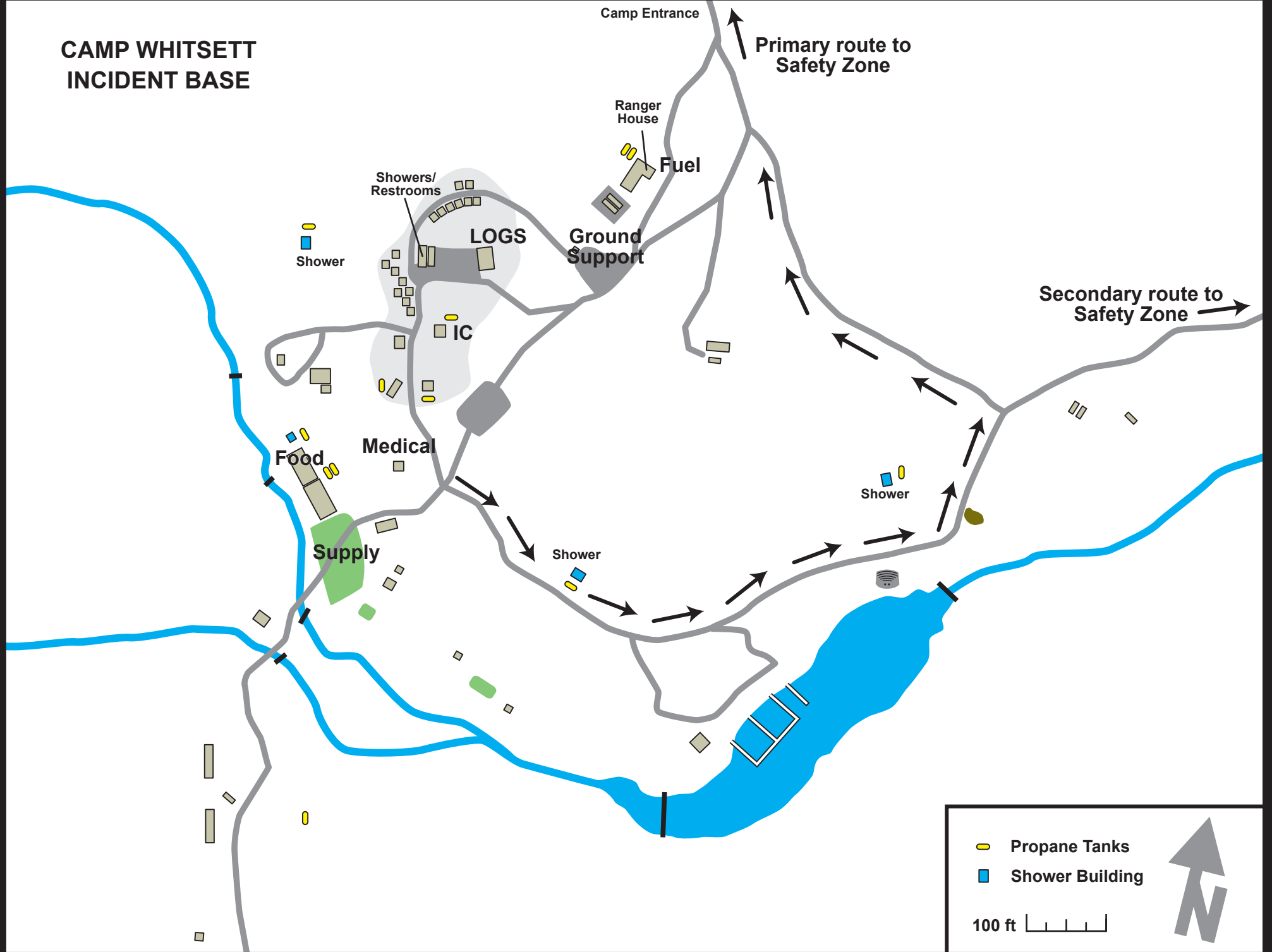
POSITION	NAME	MOBILE PHONE
SAFETY		
Safety Officer 1	Cassidy, Dan	406-250-4599
PUBLIC INFORMATION		
Public Information Officer 1	Smith, Jeannette M	406-544-0131
Public Information Officer 1 (t)	Bateson, Anna	406-360-5638
Public Information Officer 1 (t)	Vosburgh, Mark	406-370-8149
LIAISON		
Liaison Officer	Taylor, Robert L	406-544-4679
Liaison Officer	Jaquith, Kay	406-531-9123
OPERATIONS		
Operations Section Chief 1	Olson, Brent H	406-249-4994
Line Ops	Schrenk, Scott	406-250-0354
Air Ops	Morton, Dennis	406-660-2318
PLANNING		
Planning Section Chief	Jermyn, Robin	406-360-5936
Planning Section Chief (t)	Carlin, Rob	406-249-1989
Deputy Planning Chief	Gump, Robert	850-688-7623
Status Check In	Heinsch, Faith Ann	858-204-7419
DEMOB	Murphy, Tanya	951-235-1568
Training Specialist	Boss, Matt	951-314-1427
LOGISTICS		
Logistics Section Chief 1	Showers, Charles	406-531-3691
Ordering Manager	Lind, Rita	406-291-3012
Supply Unit Leader	King, Josh	406-855-0984
Communications Unit Leader	Sene, Dustin	406-581-9816
COVID Hotline		949-330-9973
FINANCE		
Finance Section Chief 1	Schrenk, Amy	406-830-5214
General Finance Information		949-591-4123





**Transportation
Sequoia Complex**
CA-SQF_002622



CAMP WHITSETT INCIDENT BASE



-  Propane Tanks
-  Shower Building

100 ft 



MEDICAL PLAN (ICS 206 WF)

Controlled Unclassified Information//Basic

Medical Incident Report

FOR A NON-EMERGENCY INCIDENT, WORK THROUGH CHAIN OF COMMAND TO REPORT AND TRANSPORT INJURED PERSONNEL AS NECESSARY.

FOR A MEDICAL EMERGENCY: IDENTIFY ON SCENE INCIDENT COMMANDER BY NAME AND POSITION AND ANNOUNCE "MEDICAL EMERGENCY" TO INITIATE RESPONSE FROM IMT COMMUNICATIONS/DISPATCH.

Use the following items to communicate situation to communications/dispatch.

1. CONTACT COMMUNICATIONS / DISPATCH (Verify correct frequency prior to starting report)

Ex: "Communications, Div. Alpha. Stand-by for Emergency Traffic."

2. INCIDENT STATUS: Provide incident summary (including number of patients) and command structure.

Ex: "Communications, I have a Red priority patient, unconscious, struck by a falling tree. Requesting air ambulance to Forest Road 1 at (Lat./Long.) This will be the Trout Meadow Medical, IC is TFLD Jones. EMT Smith is providing medical care."

Severity of Emergency / Transport Priority	<input type="checkbox"/> RED / PRIORITY 1 Life or limb threatening injury or illness. Evacuation need is IMMEDIATE <i>Ex: Unconscious, difficulty breathing, bleeding severely, 2° – 3° burns more than 4 palm sizes, heat stroke, disoriented.</i> <input type="checkbox"/> YELLOW / PRIORITY 2 Serious Injury or illness. Evacuation may be DELAYED if necessary. <i>Ex: Significant trauma, unable to walk, 2° – 3° burns not more than 1-3 palm sizes.</i> <input type="checkbox"/> GREEN / PRIORITY 3 Minor Injury or illness. Non-Emergency transport <i>Ex: Sprains, strains, minor heat-related illness.</i>	
Nature of Injury or Illness & Mechanism of Injury		<i>Brief Summary of Injury or Illness (Ex: Unconscious, Struck by Falling Tree)</i>
Transport Request		<i>Air Ambulance / Short Haul/Hoist Ground Ambulance / Other</i>
Patient Location		<i>Descriptive Location & Lat. / Long. (WGS84)</i>
Incident Name		<i>Geographic Name + "Medical" (Ex: Trout Meadow Medical)</i>
On-Scene Incident Commander		<i>Name of on-scene IC of Incident within an Incident (Ex: TFLD Jones)</i>
Patient Care		<i>Name of Care Provider (Ex: EMT Smith)</i>

3. INITIAL PATIENT ASSESSMENT: Complete this section for each patient as applicable (start with the most severe patient)

Patient Assessment: See IRPG PAGE 106

Treatment:

4. TRANSPORT PLAN:

Evacuation Location (if different): (Descriptive Location (drop point, intersection, etc.) or Lat. / Long.) Patient's ETA to Evacuation Location:

Helispot / Extraction Site Size and Hazards:

5. ADDITIONAL RESOURCES / EQUIPMENT NEEDS:

Example: Paramedic/EMT, Crews, Immobilization Devices, AED, Oxygen, Trauma Bag, IV/Fluid(s), Splints, Rope rescue, Wheeled litter, HAZMAT, Extrication

6. COMMUNICATIONS: Identify State Air/Ground EMS Frequencies and Hospital Contacts as applicable

Function	Channel Name/Number	Receive (RX)	Tone/NAC *	Transmit (TX)	Tone/NAC *
COMMAND					
AIR-TO-GRND					
TACTICAL					

7. CONTINGENCY: Considerations: If primary options fail, what actions can be implemented in conjunction with primary evacuation method? Be thinking ahead.

8. ADDITIONAL INFORMATION: Updates/Changes, etc.

REMEMBER: Confirm ETA's of resources ordered. Act according to your level of training. Be Alert. Keep Calm. Think Clearly. Act Decisively.

