

SEQUOIA COMPLEX

Incident Action Plan

CA-SQF-002622 P5NG2P (0513)

Values at Risk

Firefighters and Public Safety

Communities

Ponderosa, Camp Nelson, Pyles Boys Camp, Rogers Camp, Sequoia Crest, Cedar Slope, Alpine Village, Redwood Drive, Lloyd Meadows, Mountain Aire, Pierpoint, Coy Flat

Infrastructure

Osa, Beach, Casa Vieja & Beck Meadows, USGS Seismic, Black Rock RS, Quinn RS, Kern RS
Dispersed and development campgrounds, trailheads & associated facilities

Natural & Cultural Resource Values

Freeman Giant Sequoia Grove, Little Kern Golden Trout Habitat, Mountain Yellow Legged Frog Habitat, Sierra Nevada Bighorn Sheep Habitat, Monache Mountain, Monache Meadow and other archaeological & cultural sites



OPERATIONAL PERIOD

Thursday September 10, 2020

Friday September 11, 2020

0600 to 0600



INCIDENT OBJECTIVES	1. Incident Name SEQUOIA COMPLEX	2. Date Prepared 9/9/2020	3. Time Prepared 1600
4. Operational Period			
September 10, 2020 0600 to September 11, 2020 0600			
5. General Control Objectives for the Incident			
<ul style="list-style-type: none"> • Limit growth of the Castle Fire by establishing a holding line that is safe for firefighters and offers high probability of success to keep the fire: <ul style="list-style-type: none"> ○ North of Durr Wood Camp ○ South of Sequoia Kings Canyon Wilderness Boundary ○ East of Highway 190 and to Summit Trail ○ West of Toowa Range to King Fisher Ridge to 22S05 Road • Monitor the spread/growth of the Shotgun Fire using air operation assets. • Protect and minimize impacts to identified values at risk including the communities of Ponderosa, Camp Nelson, Pyles Boys Camp, Rogers Camp, Cedar Slope, Sequoia Crest, Alpine Village, Redwood Drive, Lloyd Meadows, Mountain Aire, Pierpoint, and Coy Flat, as well as infrastructure at Freeman Giant Sequoia Grove, Blackrock Ranger Station; Osa, Beach, Casa Vieja, Monache, and Beck Meadows; trailheads and facilities. • Coordinate with the Sequoia NF Duty Officer on support to any new initial attack. 			
6. Management Objectives			
<ul style="list-style-type: none"> • Implement suppression actions that have a high potential for success, carefully weighing risk exposure to firefighters. • Provide for the safety of firefighters, aviation and public through clear communication. Ensure an understanding of strategies and tactics, including a clearly defined and obtainable end state, in order to facilitate sound risk mitigation decision making. • Implement social distancing and adhere to the “module of one” concept to reduce physical exposure and transmission of COVID-19, to provide for the health and safety of all incident personnel. • Minimize to the extent feasible smoke exposure to firefighters, communities and other affected areas to reduce susceptibility to the consequences from COVID-19 exposure. • Maintain and strengthen relationships with partner agencies, stakeholders, cooperators, community leaders, and local agencies utilizing most effective platforms available. • Minimize adverse effects from suppression actions on riparian areas, wetlands, Little Kern Golden Trout, Mountain Yellow Legged Frog, and Pacific Fischer and Sierra Nevada Bighorn Sheep habitats. • Minimize impacts to Wilderness areas; use minimum impact suppression tactics (MIST) by utilizing trails, streams, ridges and natural barriers when possible for control lines. 			
7. Commander’s Intent			
<ul style="list-style-type: none"> • Safety: Address fire fighter, public, and aviation safety through hazard/exposure mitigation. • Communication: We will keep the Agency Administrators informed of significant accomplishments and issues. • Risk Management: We will use a robust risk assessment process to mitigate unnecessary risk to fire fighters and update and/or revise decisions as necessary. • Human Resources: We will ensure that all incident personnel be treated with dignity and respect. We have a zero tolerance for harassment, alcohol, or illegal drug use. • Operations: We will make informed tactical decisions engaging the fire in the right locations with the appropriate resources. • Public Information: We will provide timely and accurate information through the press, meetings, trap lines, briefings, and social media. • Stakeholders: We will coordinate with the delegating agencies to identify key partners and keep them effectively informed of progress and to use their local knowledge. • Finance: We will establish and monitor cost effective methods for accomplishing incident objectives. 			
8. ATTACHMENTS (X IF ATTACHED)			
[X] Organization List - ICS 203	[X] Medical Plan - ICS 206	[] _____	
[X] Division Assignment Lists - ICS 204	[X] Unit Log 214	[] _____	
	[X] WF206 8 Line	[] _____	
9. Prepared By (Planning Section Chief)		10. Approved By (Incident Commander)	
Rob Carlin PSC1 (t)		Michael Goicoechea IC	

ORGANIZATION ASSIGNMENT LIST				Operations Section	
1. Incident Name		Sequoia Complex		Field Operations	Scott Schrenk / Andy James (t)
2. Date Prepared	9/9/2020	3. Time Prepared	1700	Planning Operations	Brent Olson 406.249.4994 / Shawn Borgen (t)
4. Operational Period September 10, 2020 to September 11, 2020 0600 to 0600				Branch I Director	Justin Kaber
				Branch V Director	Ryan Butler
				Structure Branch	Drew Daily
Incident Commander and Staff				Branch I	
Incident Commander	Mike Goicoechea			Alpha	Kate Airhart
Deputy	Mark Goeller / Greg Poncin			Bravo	Rocky Wagoner
Safety Officer	Tony Petrilli 406.370.5996 / Todd Mott (t)			Charlie	Unstaffed
Information Officer	Jeannette Smith 406.544.0131			Golf	Unstaffed
Liaison Officer	Rob Taylor 406.544.4679			Swing	Jon Norman
Agency Representative				Yankee / Zulu	Stryker Clark / Jerry Olson (t)
SQF AA	Constance Cummins / Ann Niesen (t)			Branch V	
SQF AR	Al Watson			Black Rock / Backcountry	Geoff Farinholt / Richard Baker (t)
SQF READ	Adam Barnett 760.920.8104			India	Unstaffed
INF AR	David Andersen			Lima / X-Ray	Mike King / Graydon Galloway (t)
INF AA	John (Pancho) Smith			November	Unstaffed
INF READ	Adam Barnett 760.920.8104			Uniform	Unstaffed
SEKI AA	Lee Taylor				
SQF Chief 1	Angie Sanchez-Hand				
Sequoia & Kings NPS	Dan Morford				
Tulare Co FD	Jeff McLaughlin			Structure	
SoCAL Edison	Troy Whitman			Lloyd	Bryan Duffy
CHP	Chad Patton			Nelson	Hunter Seaborn Bell, III
Tribal Liaison	Dirk Charley 559-554-5433			Ponderosa	Brad Allen / Tom McLeod (t)
Tule River Tribe – FMO	Zane Santos 559.339.8686				
Planning Section				Night	
Section Chief	Robin Jermyn 406.360.5936 / Rob Carlin (t)			Night	John Lange (t)
Deputy	Rob Gump 850.688.7623			Mountain Home	
Situation Unit	Derek Trauntvein 307.430.8598 Lance Robinson 208.421.5969			Mountain Home	
Demobilization Unit	Tanya Murphy 951.235.1568			Air Operations Branch	
Resources Unit Leader	Anya Moline 406.366.1979 / Anthony Watts (t)			Air Operations Branch Director	Dennis Morton 406.660.2318
Status Check-in	Faith Ann Heinsch 858.204.7419			Air Support Group Supervisor	John McKee 406.370.7028 / Dan Sepulveda
Fire Behavior Analyst	Brian Anderson 406.660.0450 / David Greathouse			Air Tactical Group Supervisor	Tony Duprey
Long-Term Analyst	LaWen Hollingsworth 406.552.5440 / Alicia Reiner (t)			Finance Section	
GIS Specialist	Erin Heiselmann 406.546.4014 Nate Meyer 307.761.1541 / McIntyre Murphy (t)			Section Chief	Amy Schrenk 406.830.5214
Computer Specialist	Tim McCracken 303.859.7753 / John Vaisa (t)			Time Unit	Marta Lujan 970.275.3120
Meteorologist	Dan Byrd 240.778.4278			Equipment Time	Lynda Pike 406.382.0086
Human Resource	Debby Hassel 406.274.7985			Personnel Time	Tama Lester 580.212.1017
Training Specialist	Matt Boss (t) 951.314.1427			Cost Unit	Khon Viengkham 703.217.7269
Logistics Section				Procurement Unit Leader	Dana Bangart 406.360.0029
Section Chief	Charlie Showers 406.370.3787 / Roylene Gaul Jim Evanoff 406.223.8660 / LeRoy Evans (t)			Comps / Claims	Leon Augustine 406.363.8956 Shannon Maxwell (t) 406.366.3724
Ordering Manager	Rita Lind 310.650.1222 or 423.534.9699 Kristin Troop (virtual)			IBA	Nancy Gibson
Supply Unit	Josh King 406.855.0984 / Brent Elmore (t)			Prepared by:	Anya Moline - RESL
Facilities Unit	James Andruzzi 917.443.2556 Bill Fitch / Matt LaTray				
Base Camp	Patrick Beers (t) 253.318.7992				
Ground Support Unit	Keith Windell 213.503.4243				
Communications Unit	Dustin Sene 406.581.9816				
Communications Tech	Trent Coppinger 406.581.9027				
Medical Unit	Emily Ellick-Flettre 405.593.3369 / Brett Clymer				

SQF complex
10 Sept, 2020

COVID Safety Message

The mitigations practices developed for your health and protection from COVID are simple but important. They not only protect you but protect your team, and also the others you interact with on the fire and in camp. This keeps the entire firefighting mission safe from the potential impact of COVID.

To gain the maximum protections, we must all practice these mitigations including **maintaining your module, masking, sanitation & hand hygiene, and social distancing**. This also includes minimum numbers at morning briefings – spread out.

In addition, we ask you to follow the self-assessment guide and report to medical and your supervisor if you show signs of COVID.

If you try to work injured or without protective gear, you are asking your brothers and sisters on the line to risk their lives to protect you. You don't do that because, as firefighters, **we respect each other**.

Failing to practice your mitigations is a **risk to safety**, just like not wearing PPE, failing to carry your fire shelter or ignoring your spacing when working with a tool.

Would I ever ask others to put themselves at risk simply because I refuse to act responsibly? No. Because we have each other's backs and watch out for each. No question.

Not keeping yourself and others healthy and protected from COVID exposure puts each and every one of us at risk. Your crew or others can become unfit for work and pulled away because of a broad outbreak. This is dangerous at such a critical time with widespread fires and shortages of manpower at all levels.

I will use all my PPE.

I'll work to be the best firefighter I can be.

I will strive to keep my fellow firefighters, staff and crew safe.

I'll watch your back; you will watch mine.

I'll protect you from COVID by my actions.

I trust you to respect me and our mission by doing the same.

**Dr. Harry Sibold
Emergency Physician and COVID Specialist
NR Team 1**



FIRE WEATHER FORECAST



FORECAST NO: 17
PREDICTION FOR: Sept 10-11, 2020 0600-0600

INCIDENT NAME: Sequoia Complex

UNIT: CA-SQF
SIGNED: *Dan Byrd*

TIME AND DATE
FORECAST ISSUED: Wed, Sep 9 @ 2000 hours

Incident Meteorologist – Dan Byrd

WEATHER DISCUSSION: The upper low pressure system will slowly begin to shift to the east today and upper ridging will begin to build across the area tonight. Temperatures will begin a warming trend today and this trend will continue into the weekend. The ridge winds will start out northerly this morning, but will become southwesterly later this morning or early afternoon. High pressure ridging will begin to re-establish itself over the region tonight into Friday. Expect temperatures to become hotter, with more diurnally driven winds Friday into the weekend.

SKY/WEATHER TODAY (THURSDAY): Sunny, warmer, dry and smoky. Depending on the smoke from the Creek Fire, expect the inversion to break by 1100-1200.

MAX TEMPERATURES / MIN RELATIVE HUMIDITY:

5000 FT: 82 to 88 degrees (Up 2-3 Degrees) / 11 to 16% (Down 2-4%)

7000 FT: 72 to 79 degrees (Up 2-3 Degrees) / 16 to 21% (Down 2-4%)

EYE LEVEL WINDS:

Slope/Valley: Morning drainage winds will become south to southwest after 1100-1200 with speeds 4 to 6 gusts to 10 G16 mph. Winds will continue to be heavily impacted by local terrain.

Ridges: Northwest 5 to 10 mph becoming southwest 5 to 10 G15 mph in the early afternoon.

MIXING HEIGHT...8,000 FT AGL VENTILATION... Good

TRANSPORT WIND...Northwest around 5 mph in the morning, shifting to the southwest in the afternoon 5 to 10 mph.
CWR (0.10")...0% LAL...1 HAINES...5

SKY/WEATHER TONIGHT (THURSDAY NIGHT): Mostly clear with heavy smoke in the Kern River Valley. North to northeast 3 to 6 mph. Squirrelly winds could occur near the confluence of the Little Kern/Kern Rivers. Overnight RH recoveries will remain poor.

MIN TEMPERATURES / MAX RELATIVE HUMIDITY

5000 FT: 56 to 61 degrees (Up 2-3) / 25 to 30% (Steady)

7000 FT: 50 to 55 degrees (Up 1-2) / 20 to 25% (Steady)

EYE LEVEL WINDS:

Slope/Valley: North to northeast 3 to 6 mph.

Ridges: North 6-8 mph.

CWR (0.10")...0% LAL...1

FRIDAY: Inversion lifting by 1000-1100. Mostly sunny, hotter temperatures but smoky, with continued low RH.

Max Temps: 78 to 93. **Min RH:** 11 to 16%. **Winds: Slope/Valley:** Morning drainage winds becoming south to southwest 5-10 G14 mph in the afternoon. **Ridge:** North 5 to 8 mph becoming southwest 5 to 10 G15 mph in the afternoon.

LAL: 1 CWR (0.10"): 0% MIXING HEIGHT: 9,000 FT AGL HAINES: 6

OUTLOOK for SATURDAY Through MONDAY:

FRIDAY: Mostly Sunny. **High Temp:** 78-94. **Min RH:** 11. **Ridge Wind:** SW 6-10 mph.

SATURDAY: Sunny. **High Temp:** 80-97. **Min RH:** 11. **Ridge Wind:** SW 8-12 mph.

SUNDAY: Sunny. **High Temp:** 83-100. **Min RH:** 12. **Ridge Wind:** SW 8-12 G18 mph.

FIRE BEHAVIOR FORECAST

FORECAST NUMBER: 20

TYPE OF FIRE: Wildland

FIRE NAME: Sequoia Complex

OPERATIONAL PERIOD: 9/10/2020: 0600-0600

DATE ISSUED: September 9, 2020

TIME ISSUED: 1800

UNIT: CA-Sequoia National Forest

SIGNED: /s/ David Greathouse FBAN

WEATHER

****Warmer, drier, a little more unstable****

(See Weather forecast for details)

Weather thresholds for large fire growth: Temp: >83 deg, RH <20%, 20ft winds >7mph

Rule of Thumb – To figure 20' winds, divide the observed eye level winds by .4

FUELS

Fuels- The fuels that dominate the Castle fire are primarily mixed conifer with a heavy component of dead and down material. In the lower elevations and especially in the fire scars, a mix of shrub and grass/shrub can be found. Heavy pockets of beetle killed timber can also be found throughout the fire area. The fuels in the Shotgun fire are primarily grass and grass/shrub. The fuels are very dry for this time of year. The ERC's are currently near the 97th. The 100-hr and 1000-hr fuels are at 6% and 7%. These indices indicate that all dead fuel will contribute to fire intensity.

Topography- Topography in the fire area is dominated by the Kern River. This river drainage runs north/south and is steep and narrow, roughly bisecting the fire area down the middle. Terrain has played a central role in fire spread, taking the predominantly SW flow and directing it in every way imaginable across the fire area.

FIRE BEHAVIOR

Maximum Fire Potential (Assuming head fire, FDFM 3%, 20' windspeed 5-10mph, 30% slope)

	Max Rate of Spread	Max Flame Lengths
Grass	50-100 ch/hr	8-11'
Grass/Shrub	5-10 ch/hr	5-6'
Timber	10-20 ch/hr	6-8'

Rule of Thumb: Cut head fire flame lengths in half for flanking fire, backing fire 2'-4' flame lengths

All Divisions: Expect active surface fire today along with single tree and group tree torching. If wind and/or terrain align with the fire, crown fire is possible. Spotting is probable in all fuel types today. Expect burning conditions to increase around 1100, peak between 1600-1700 before moderating after dark. **Monitor the wind speeds.** Fire activity increases significantly when the 20' winds reach 10mph. the probability of ignition today is 80%-90% in unshaded areas.

Div A/Z – Expect the fire to continue to flank west further into the Freeman Creek Sequoia Grove today. The wind is in your favor today, so I do not expect spotting. However, pay attention to the southern end of your fire. Do not let the lower end of the fire outpace the top. If this occurs, you can expect uphill crown fire and long-range spotting.

Div L - The fire will continue to back down towards the 34 road on the south side of the long finger south of Little Horse Meadows. The north side will continue to burn around the meadow and north along the 96 road. Watch out where fuels and terrain align. Rates of spread could increase significantly.

Div B – Expect the fire to continue to move west against the wind. Forward progress by the end of shift could match what was seen yesterday.

Shotgun Fire The fire is following mainly brush fuels with short uphill runs when established on the lower 1/3 of the slope. Spread is not likely to be significant due to the lack of surface fuels.

AIR OPERATIONS

Smoke may have an impact on air operations today

SAFETY

Benign fire behavior can make us complacent. Do not let that happen. This fire still wants to move. And if it finds the right piece of real estate, it will definitely challenge us

DIVISION ASSIGNMENT LIST			Branch			Division/Group			
Incident Name			I			ALPHA			
SEQUOIA COMPLEX			Operational Period						
			Date: 9/10/2020 to 9/11/2020			Time: 0600-0600			
Operations Personnel									
Operations Chief	Brent Olson, Scott Schrenk Andy James (t) Shawn Borgen (t)			Branch Director			Justin Kaber 406-250-1455		
Air Operations	Dennis Morton / John McKee Dan Sepulveda			Division/Group Supervisor			Kate Airhart 406-360-0506		
Safety Officer	Tony Petrilli, Todd Mott (t) Dan Cassidy								
Resources Assigned This Period									
Strike Team/Task Force/ Resource Designator	Req#	Last Shift	Leader	# Perso ns	Drop Off Point /Time	Pick Up Point / Time			
HC1 Vista Grande	C-54	9/12	Jess Estrada	19	Whitsett Base 0600	Whitsett Base 2100			
HC2 Patrick1	C-90	9/19	Joshua Chilest	20	Whitsett Base 0600	Whitsett Base 2100			
WFM Sequoia	O-266	9/12	Aaron Woodyard	8	Whitsett Base 0600	Whitsett Base 2100			
TFLD			Matt Chambers	1	Whitsett Base 0600	Whitsett Base 2100			
TFLD (t)	O-336	9/14	Scott Turner	1	Whitsett Base 0600	Whitsett Base 2100			
ENG6 High Desert	E-137	9/12	Thomas Hanks	3	Whitsett Base 0600	Whitsett Base 2100			
ENG6 Red Dog	E-167	9/12	Tim England	2	Whitsett Base 0600	Whitsett Base 2100			
ENG6	E-312	9/22	Peter Allen	3	Whitsett Base 0600	Whitsett Base 2100			
WTT2 K&B	E-48	9/14	Mike Morgan	1	Whitsett Base 0600	Whitsett Base 2100			
WTT2 49ers	E-50	9/10	Steve Smith	1	Whitsett Base 0600	Whitsett Base 2100			
WTT2 CNF WT222	E-145	9/12	Andrew Peterson	2	Whitsett Base 0600	Whitsett Base 2100			
DOZ2 Westlund	E-139	9/12	Alan Westlund	2	Whitsett Base 0600	Whitsett Base 2100			
EXC2 Sandborg	E-179	9 /13	Chuck Sandborg	2	Whitsett Base 0600	Whitsett Base 2100			
EXC2 Denis Equip	E-188	9/15	Anthony Pezzi	2	Whitsett Base 0600	Whitsett Base 2100			
GRD2 Kirklang	E-97	9/17	Todd Adams	2	Whitsett Base 0600	Whitsett Base 2100			
CHIP1 Siskiyou	E-184	9/16	Dennis Lange	2	Whitsett Base 0600	Whitsett Base 2100			
CHIP1 Wyeas Forestry	E-192	9/16	Ryan Grigsby	2	Whitsett Base 0600	Whitsett Base 2100			
MAST Shannon Bros	E-186	9/13	Chuck Sandborg	1	Whitsett Base 0600	Whitsett Base 2100			
SOFR	O-183	9/11	Joseph Fowler	1	Whitsett Base 0600	Whitsett Base 2100			
SOFR (t)	O-171	9/12	Eric Klemowicz	1	Whitsett Base 0600	Whitsett Base 2100			
REMS1	O-332	9/13	REMS	4	Whitsett Base 0600	Whitsett Base 2100			
REAF	O-277	9/18	Scott Dailey	1	Whitsett Base 0600	Whitsett Base 2100			
REAF (t)	O-398	9/17	Noah Hirsch	1	Whitsett Base 0600	Whitsett Base 2100			
Work Assignments									
Task: Identify roads, ridges and natural barriers to be connected to form an indirect containment line west of the Freeman Grove. Do fuels prep on this indirect line to reduce the potential for spotting. Implement firing of this indirect line as directed by Branch 1. Coordinate suppression actions with Y/Z and B.									
Purpose: Keep the fire spread east of the North road and north of Ponderosa.									
End State: Limit fire spread into additional values at risk to protect communities and infrastructure.									
Special Instructions									
<ul style="list-style-type: none"> Personnel to notify DIVS of potentially sensitive cultural materials. Castle Ambulance 3 staged at Whitsett Base Camp. Castle Ambulance 2 stage at Black Rock Ranger station. Castle REMS1 available to all Branch I divisions. Prioritization of all control or containment actions taken during the operational period in this Division will be at the discretion of the DIVS. Actions may have to be taken by the DIVS that are not enumerated in today's IAP. These actions would be a result of a significant change in actual or expected fire behavior over and above that anticipated at the time the IAP was prepared. These actions will be coordinated with and approved by the OSC whenever possible. 									
Division/Group Communication Summary									
Function	Channel	Frequency RX	Frequency TX	TONE RX	TONE TX	Function	Channel	Frequency RX	Frequency TX
COMMAND	1	170.0000	166.6750	151.4	151.4	A/G TAC	13	172.3500	172.3500
NIFC T1	5	168.0500	168.0500	151.4	151.4	A/G CMD	14	169.1500	169.1500
Prepared by Anthony Watts – RESL(t)		Approved By Robin Jermyn - PSC				Date 9/9/2020		Time 1800	

DIVISION ASSIGNMENT LIST				Branch		Division/Group				
Incident Name				I		BRAVO				
SEQUOIA COMPLEX				Operational Period						
				Date: 9/10/2020 to 9/11/2020			Time: 0600-0600			
Operations Personnel										
Operations Chief		Brent Olson, Scott Schrenk Andy James (t) Shawn Borgen (t)			Branch Director		Justin Kaber 406-250-1455			
Air Operations		Dennis Morton / John McKee Dan Sepulveda			Division/Group Supervisor		Rocky Wagoner 406-531-9809			
Safety Officer		Tony Petrilli, Todd Mott (t) Dan Cassidy								
Resources Assigned This Period										
Strike Team/Task Force/ Resource Designator		Req#	Last Shift	Leader	# Persons	Drop Off Point /Time		Pick Up Point / Time		
HC1 Dalton		C-53	9/11	Scott Gorman	19	Whitsett Base 0600		Whitsett Base 2100		
WFM Whiskey Flat		O-574	9/18	Travis Clendenen	9	Whitsett Base 0600		Whitsett Base 2100		
TFLD		O-582	9/18	Robert Bundy	1	Whitsett Base 0600		Whitsett Base 2100		
ENG3 Kinsley		E-249	9/18	Kurt Edwards	1	Whitsett Base 0600		Whitsett Base 2100		
ENG6 Buffalo		E-132	9/13	Gregg Webster	3	Whitsett Base 0600		Whitsett Base 2100		
ENG6 R Construction		E-166	9/12	Richard Deroche	3	Whitsett Base 0600		Whitsett Base 2100		
ENG6 106430		E-313	9/22	Matthew Dimas	3	Whitsett Base 0600		Whitsett Base 2100		
DOZ2 Shannon Bros		E-45	9/14	John Shannon	1	Whitsett Base 0600		Whitsett Base 2100		
FMOD Timbersmith		O-177	9/16	Ryan Deniz	2	Whitsett Base 0600		Whitsett Base 2100		
SOFR		O-389	9/16	James Gregory	1	Whitsett Base 0600		Whitsett Base 2100		
EMPF		O-295	9/14	Nick Stepanian	1	Whitsett Base 0600		Whitsett Base 2100		
EMPF		O-863	9/22	Chris Inman	1	Whitsett Base 0600		Whitsett Base 2100		
REAF		O-524	9/19	Sarah Zaragoza	1	Whitsett Base 0600		Whitsett Base 2100		
REAF (t)		O-395	9/19	Ian Woodruff	1	Whitsett Base 0600		Whitsett Base 2100		
Work Assignments										
<p>Task: Scout Mountain Aire Creek to DP-6 and look to build containment line that ties into the 2017 Lion Fire scar. Assess opportunities for containment line to limit fire spread to the south and west. Assess Jordan Peak Lookout and White Meadow Cabin for structure protection needs. Begin burning the prepped indirect line from near DP-6 to the south as necessary and as directed by Branch 1. Coordinate with Alpha and Yankee/Zulu to ensure a coordinated strategy.</p> <p>Purpose: To limit fire spread to the south and west and prevent impacts to surrounding communities.</p> <p>End State: Impacts to local communities and infrastructure was kept to a minimum.</p>										
Special Instructions										
<ul style="list-style-type: none"> Personnel to notify DIVS of potentially sensitive cultural materials. Castle Ambulance 3 staged at Whitsett Base Camp. Castle Ambulance 2 stage at Black Rock Ranger station. Castle REMS1 available to all Branch I divisions. Prioritization of all control or containment actions taken during the operational period in this Division will be at the discretion of the DIVS. Actions may have to be taken by the DIVS that are not enumerated in today's IAP. These actions would be a result of a significant change in actual or expected fire behavior over and above that anticipated at the time the IAP was prepared. These actions will be coordinated with and approved by the OSC whenever possible. 										
Division/Group Communication Summary										
Function	Channel	Frequency RX	Frequency TX	TONE RX	TONE TX	Function	Channel	Frequency RX	Frequency TX	
COMMAND	1	170.0000	166.6750	151.4	151.4	A/G TAC	13	172.3500	172.3500	
NIFC T3	6	168.6000	168.6000	151.4	151.4	A/G CMD	14	169.1500	169.1500	
Prepared by Anthony Watts – RESL(t)		Approved By Robin Jermyn - PSC				Date 9/9/2020			Time 1800	

DIVISION ASSIGNMENT LIST		Branch	Division/Group
Incident Name		I	SWING
SEQUOIA COMPLEX		Operational Period	
		Date: 9/10/2020 to 9/11/2020 Time: 1200-0400	
Operations Personnel			
Operations Chief	Brent Olson, Scott Schrenk Andy James (t) Shawn Borgen (t)	Branch Director	Justin Kaber
Air Operations	Dennis Morton John McKee Dan Sepulveda	Division/Group Supervisor	Jon Norman 406-499-1242
Safety Officer	Tony Petrilli, Todd Mott (t) Dan Cassidy		

Resources Assigned This Period

Strike Team/Task Force/ Resource Designator	Req#	Last Shift	Leader	# Persons	Drop Off Point /Time	Pick Up Point / Time
HC1 Fulton	C-67	9/15	Josh Acosta	20	Whitsett Base 1200	Whitsett Base 0400
HC1 Cherokee	C-83	9/17	Josh Tester	20	Whitsett Base 1200	Whitsett Base 2100
DOZ2 ANF 12	E-142	9/10	Doug Lander	2	Whitsett Base 1200	Whitsett Base 0400

Work Assignments
Task: Complete the indirect dozer line off the Needle Lookout road. When timing is right, implement the firing of the indirect containment line starting near Drop Point 6 and as directed by Branch 1.
Purpose: To provide continuity of operations between day/night shifts as well as apply operational surge capacity to implement critical missions as identified by Branch 1 based on tactical needs and fire behavior.
End State: Impacts to values at risk have been minimized and critical missions have been successfully implemented safely.

- Special Instructions**
- Personnel to notify DIVS of potentially sensitive cultural materials.
 - Castle Ambulance 3 staged at Whitsett Base Camp. Castle Ambulance 2 stage at Black Rock Ranger station. Castle REMS1 available to all Branch I divisions.
 - Prioritization of all control or containment actions taken during the operational period in this Division will be at the discretion of the DIVS. Actions may have to be taken by the DIVS that are not enumerated in today's IAP. These actions would be a result of a significant change in actual or expected fire behavior over and above that anticipated at the time the IAP was prepared. These actions will be coordinated with and approved by the OSC whenever possible.

Division/Group Communication Summary

Function	Channel	Frequency RX	Frequency TX	TONE RX	TONE TX	Function	Channel	Frequency RX	Frequency TX
COMMAND NIFC T5	1	170.0000	166.6750	151.4	151.4	A/G TAC	13	172.3500	172.3500
	7	166.7250	166.7250	151.4	151.4	A/G CMD	14	169.1500	169.1500
Prepared by Anthony Watts – RESL(t)	Approved By Robin Jermyn - PSC	Date 9/9/2020	Time 1800						

DIVISION ASSIGNMENT LIST			Branch			Division/Group			
Incident Name			I			YANKEE / ZULU			
SEQUOIA COMPLEX			Operational Period						
			Date: 9/10/2020 to 9/11/2020			Time: 0600-0600			
Operations Personnel									
Operations Chief	Brent Olson, Scott Schrenk Andy James (t) Shawn Borgen (t)			Branch Director			Justin Kaber 406-250-1455		
Air Operations	Dennis Morton / John McKee Dan Sepulveda			Division/Group Supervisor			Stryker Clark / Jerry Olson (t) 406-546-7405		
Safety Officer	Tony Petrilli Dan Cassidy								
Resources Assigned This Period									
Strike Team/Task Force/ Resource Designator	Req#	Last Shift	Leader	# Persons	Drop Off Point /Time	Pick Up Point / Time			
HC1 Los Padres	C-56	9/13	Matt Aoki	19	Whitsett Base 0600	Whitsett Base 2100			
HC1 Bear Divide	C-66	9/13	Josh Thomas	19	Whitsett Base 0600	Whitsett Base 2100			
TFLD	C-83.20	9/19	Phil Reid	1	Whitsett Base 0600	Whitsett Base 2100			
TFLD (t)	C-83.3	9/19	Mason Vance	1	Whitsett Base 0600	Whitsett Base 2100			
ENG3 A1Fire E13	E-79	9/12	Wyatt Lawrence	2	Whitsett Base 0600	Whitsett Base 2100			
ENG4 Troy	E-134	9/19	Dan Hokanson	3	Whitsett Base 0600	Whitsett Base 2100			
ENG6 Flame Chaser	E-133	9/14	Duane Many Hides	3	Whitsett Base 0600	Whitsett Base 2100			
WTT2 Central 25	E-146	9/13	Jeff Nevins	2	Whitsett Base 0600	Whitsett Base 2100			
SKG2 Alvord Fire	E-194	9/16	Bernard Saul	2	Whitsett Base 0600	Whitsett Base 2100			
DOZ2 Shannon Bros	E-44	9/14	Bill Shannon	1	Whitsett Base 0600	Whitsett Base 2100			
SOFR (t)	O-234	9/12	Dwayne Johnson	1	Whitsett Base 0600	Whitsett Base 2100			
EMPF	O-233	9/17	Silas Fischer	1	Whitsett Base 0600	Whitsett Base 2100			
EMPF	O-827	9/20	Tom Zamora	1	Whitsett Base 0600	Whitsett Base 2100			
EMTF	O-579	9/17	Patrick Garcia	1	Whitsett Base 0600	Whitsett Base 2100			
AMBU	E-170	9/13	Castle 3	2	Whitsett Base 0600	Whitsett Base 2100			
REAF	O-229	9/19	Lanny Flaherty	1	Whitsett Base 0600	Whitsett Base 2100			
CHIP McKellar	E-190	9/16	Bret Strong	2	Whitsett Base 0600	Whitsett Base 2100			
FMOD Swedberg Const.	O-599	9/22	Wade Giguere	2	Whitsett Base 0600	Whitsett Base 2100			
Work Assignments									
<p>Task: Continue to secure the perimeter between DP-1 and DP-2 to prevent fire movement into Lloyd Meadows. Monitor fire behavior in the Freeman Grove while looking for indirect containment opportunities to the west. Monitor and manage fire effects to the extent possible in the Freeman Grove. Continue mop up where appropriate. Monitor the southwest corner of the Division, focusing on the east side of the Kern River.</p> <p>Purpose: Limit fire spread toward values at risk on the west side of the fire.</p> <p>End State: Private property and infrastructure is protected, natural resource impacts are limited, and there are no accidents or injuries to firefighters or the public.</p>									
Special Instructions									
<ul style="list-style-type: none"> Personnel to notify DIVS of potentially sensitive cultural materials. Castle Ambulance 3 staged at Whitsett Base Camp. Castle Ambulance 2 stage at Black Rock Ranger station. Castle REMS1 available to all Branch I divisions. Crews be prepared to spike. Prioritization of all control or containment actions taken during the operational period in this Division will be at the discretion of the DIVS. Actions may have to be taken by the DIVS that are not enumerated in today's IAP. These actions would be a result of a significant change in actual or expected fire behavior over and above that anticipated at the time the IAP was prepared. These actions will be coordinated with and approved by the OSC whenever possible. 									
Division/Group Communication Summary									
Function	Channel	Frequency RX	Frequency TX	TONE RX	TONE TX	Function	Channel	Frequency RX	Frequency TX
COMMAND	1	170.0000	166.6750	151.4	151.4	A/G TAC	13	172.3500	172.3500
NIFC T6	8	166.7750	166.7750	151.4	151.4	A/G CMD	14	169.1500	169.1500
Prepared by Anthony Watts – RESL(t)	Approved By Robin Jernyn – PSC			Date 9/09/2020			Time 1800		

DIVISION ASSIGNMENT LIST				Branch		Division/Group				
Incident Name				V		BLACK ROCK / BACKCOUNTRY				
SEQUOIA COMPLEX				Operational Period						
				Date: 9/10/2020 to 9/11/2020			Time: 0600-0600			
Operations Personnel										
Operations Chief		Brent Olson, Scott Schrenk Andy James (t) Shawn Borgen (t)			Branch Director		Ryan Butler 406-250-0375			
Air Operations		Dennis Morton / John McKee Dan Sepulveda			Division/Group Supervisor		Geoff Farinholt / Richard Baker (t) 406-529-5671			
Safety Officer		Tony Petrilli, Todd Mott (t) Dan Cassidy								
Division/Group Supervisor										
Strike Team/Task Force/ Resource Designator		Req#	Last Shift	Leader	# Persons	Drop Off Point /Time	Pick Up Point / Time			
ENG3 SQF E-341		E-216	9/15	Merritt Cuttin	5	Troy Meadow 0600	Troy Meadow 2100			
ENG3 Gonzales		E-256	9/18	Steve Reason	3	Troy Meadow 0600	Troy Meadow 2100			
ENG5 Cate Land Fire		E-203	9/16	Vanessa Aldridge	3	Troy Meadow 0600	Troy Meadow 2100			
ENG6 Flame Chaser		E-198	9/20	Edwin Hall	3	Troy Meadow 0600	Troy Meadow 2100			
ENG6 White Horse		E-199	9/15	Jason McGaughy	3	Troy Meadow 0600	Troy Meadow 2100			
ENG6 Late Summers		E-200	9/12	Josh Crollard	3	Troy Meadow 0600	Troy Meadow 2100			
ENG6 Late Summers		E-201	9/12	Brad Beck Jr.	3	Troy Meadow 0600	Troy Meadow 2100			
ENG6 R&R Fire		E-205	9/23	Mike Cox	3	Troy Meadow 0600	Troy Meadow 2100			
CHIP		E-191	9/18	Andrew Rackley	2	Troy Meadow 0600	Troy Meadow 2100			
Inyo Packers		E-56 E-57	9/14	Lee Roesser (O-142)	4	Troy Meadow 0600	Troy Meadow 2100			
THSP		O-236	9/10	George Bowan	1	Troy Meadow 0600	Troy Meadow 2100			
EMPF		O-495	9/16	Scott Hamilton	1	Troy Meadow 0600	Troy Meadow 2100			
EMPF		O-581	9/17	Joshua Terry	1	Whitsett Base 0600	Whitsett Base 2100			
AMBU		E-52	9/21	Castle 2	2	Troy Meadow 0600	Troy Meadow 2100			
Work Assignments										
<p>Task: Develop and implement structure protection plan for Black Rock, Bonita Meadow, West Meadow and back country/wilderness structures. Recon Manatchee area. Continue to assess and prep structures in Long Canyon and Casa Vieja.</p> <p>Purpose: Protect values at risk from wildfire impacts.</p> <p>End State: Values at risk and communities are able to operate in pre-fire condition. A plan to protect values at risk is developed for the Manatchee area.</p>										
Special Instructions										
<ul style="list-style-type: none"> • A/G Tac for Branch Five: RX169.200, TX 169.200. This needs to be hand programmed. • Personnel to notify DIVS of potentially sensitive cultural materials. • Castle Ambulance 3 staged at Whitsett Base Camp. Castle Ambulance 2 staged at the Black Rock Ranger station. Castle REMS 2 available to all branch divisions. • Prioritization of all control or containment actions taken during the operational period in this Division will be at the discretion of the DIVS. Actions may have to be taken by the DIVS that are not enumerated in today's IAP. These actions would be a result of a significant change in actual or expected fire behavior over and above that anticipated at the time the IAP was prepared. These actions will be coordinated with and approved by the OSC whenever possible. 										
Division/Group Communication Summary										
Function	Channel	Frequency RX	Frequency TX	TONE RX	TONE TX	Function	Channel	Frequency RX	Frequency TX	
COMMAND	2	170.6875	166.5750	151.4	151.4	A/G TAC	Must self program	169.2000	169.2000	
COMMAND	3	172.5500	162.1875	151.4	151.4	A/G CMD	14	169.1500	169.1500	
R5 T5	10	167.1125	167.1125	151.4	151.4					
Prepared by Anthony Watts – RESL(t)		Approved By Robin Jermyn - PSC				Date 9/09/2020			Time 1800	

0/DIVISION ASSIGNMENT LIST		Branch	Division/Group
Incident Name		V	LIMA / X-RAY
SEQUOIA COMPLEX		Operational Period	
		Date: 9/10/2020 to 9/11/2020	Time: 0600-0600
Operations Personnel			
Operations Chief	Brent Olson, Scott Schrenk Andy James (t) Shawn Borgen (t)	Branch Director	Ryan Butler 406-250-0375
Air Operations	Dennis Morton / John McKee Dan Sepulveda	Division/Group Supervisor	Mike King / Graydon Galloway (t) 406-370-2121 / 208-546-9653
Safety Officer	Tony Petrilli, Todd Mott (t) Dan Cassidy		

Resources Assigned This Period

Strike Team/Task Force/ Resource Designator	Req#	Last Shift	Leader	# Persons	Drop Off Point /Time	Pick Up Point / Time
HC1 Golden Eagles	C-55	9/14	Robert Villegas	18	Troy Meadow 0600	Troy Meadow 2100
HC2 Oak Valley	C-97	9/21	Rafael Torres	19	Troy Meadow 0600	Troy Meadow 2100
WFM Horseshoe	O-1	9/20	Candice Kutrosky	12	Troy Meadow 0600	Troy Meadow 2100
WFM Slate	O-4	9/21	Angel Reyes	10	Troy Meadow 0600	Troy Meadow 2100
WFM Mammoth Lake	O-49	9/22	Jeff Karl	8	Troy Meadow 0600	Troy Meadow 2100
ENG5 Aberasturi	E-202	9/20	Russell Haynes	3	Troy Meadow 0600	Troy Meadow 2100
ENG6 CNF E473	E-263	9/19	Allen Tennant	5	Troy Meadow 0600	Troy Meadow 2100
SKD1 McKellar	E-193	9/18	Brett Strong	1	Troy Meadow 0600	Troy Meadow 2100
SKD McKellar	E-214	9/17	Harley Toller	2	Troy Meadow 0600	Troy Meadow 2100
DOZ2	E-5	9/21	Tyler Muth	1	Troy Meadow 0600	Troy Meadow 2100
DOZ2	E-140	9/11	David Krisher	2	Troy Meadow 0600	Troy Meadow 2100
CHIP	E-189	9/17	Don Kelley	1	Troy Meadow 0600	Troy Meadow 2100
EXCA	E-187	9/18	Kody Williams	1	Troy Meadow 0600	Troy Meadow 2100
FMOD Under Dog	O-596	9/18	Gary Balmain	2	Troy Meadow 0600	Troy Meadow 2100
SOF2	O-496	9/16	Tom Nash	1	Troy Meadow 0600	Troy Meadow 2100
SOFR (t)	O-393	9/16	Jacob Broiller	1	Troy Meadow 0600	Troy Meadow 2100
REMS2	E-217	9/19	Ray Storm	6	Troy Meadow 0600	Troy Meadow 2100
EMPF	O-497	9/15	Tommy Kavanaugh	1	Troy Meadow 0600	Troy Meadow 2100
EMPF	O-551	9/16	Matthew Heckman	1	Troy Meadow 0600	Troy Meadow 2100
REAF	O-228	9/12	Michael McGraw	1	Troy Meadow 0600	Troy Meadow 2100
REAF	O-231	9/19	Dan Swanson	1	Troy Meadow 0600	Troy Meadow 2100
REAF	O-252	9/11	Adam Toomey	1	Troy Meadow 0600	Troy Meadow 2100
REAF	O-522	9/11	Donna Peppin	1	Troy Meadow 0600	Troy Meadow 2100

Work Assignments

Task: Prep Blackrock road from Blackrock Ranger Station north. Improve indirect dozer lines. Scout for holding features off the Blackrock road to the west north of Blackrock Ranger Station. Monitor Div X-Ray from the air and utilize air resources as needed to keep green islands from impacting control lines west of H-4. Assess the need to insert personnel into H-4 if fire crosses containment lines. Assist with point protection as needed.

Purpose: Limit impact to values at risk on northern edge within wilderness, limit fire spread on eastern and southern edge of fire.

End State: Values at risk are not impacted by fire. The Spread of fire to the south and east is limited in Divisions L and X-Ray.

Special Instructions

- **A/G Tac for Branch Five: RX169.200, TX 169.200. This needs to be hand programmed.**
- Personnel to notify DIVS of potentially sensitive cultural materials.
- Castle Ambulance 3 staged at Whitsett Base Camp. Castle Ambulance 2 staged at the Black Rock Ranger station. Castle REMS 2 available to all branch divisions.
- Prioritization of all control or containment actions taken during the operational period in this Division will be at the discretion of the DIVS. Actions may have to be taken by the DIVS that are not enumerated in today's IAP. These actions would be a result of a significant change in actual or expected fire behavior over and above that anticipated at the time the IAP was prepared. These actions will be coordinated with and approved by the OSC whenever possible.

Division/Group Communication Summary

Function	Channel	Frequency RX	Frequency TX	TONE RX	TONE TX	Function	Channel	Frequency RX	Frequency TX
COMMAND	2	170.6875	166.5750	151.4	151.4	A/G TAC	Must self program	169.2000	169.2000
COMMAND	3	172.5500	162.1875	151.4	151.4				
NIFC T7	9	168.2500	168.2500	151.4	151.4	A/G CMD			
Prepared by	Approved By		Date		Time				
Anthony Watts – RESL(t)	Robin Jermyn - PSC		9/09/2020		1800				

DIVISION ASSIGNMENT LIST		Branch	Division/Group
Incident Name		STRUCTURE	LLOYD
SEQUOIA COMPLEX		Operational Period	
		Date: 9/10/2020 to 9/11/2020 Time: 0600-0600	

Operations Personnel			
Operations Chief	Brent Olson, Scott Schrenk Andy James (t) Shawn Borgen (t)	Branch Director	Drew Daily 405-431-9476
Air Operations	Dennis Morton / John McKee Dan Sepulveda	Division/Group Supervisor	Bryan Duffy 559-731-8676
Safety Officer	Tony Petrilli, Todd Mott (t) Dan Cassidy		

Resources Assigned This Period						
Strike Team/Task Force/ Resource Designator	Req#	Last Shift	Leader	# Persons	Drop Off Point /Time	Pick Up Point / Time
S/T 5809C ENG3	E-241	9/18	Jason Elizondo	16	Whitsett Base 0600	Whitsett Base 2100
S/T 5181F ENG6	E-238	9/18	Kevin Riggi	16	Whitsett Base 0600	Whitsett Base 2100

Work Assignments

Task: Provide structure defense for the Lloyd Meadows and Pyle's Camp area by continuing mopup of the containment lines along Lloyd Meadow Rd. And the 67 Rd. Continue to assist Division Y/Z with fireline construction and holding west of the Lloyd Meadow Rd and in the vicinity of the Freeman Grove. Complete fuels prep as appropriate near Peppermint Ranch, and initiate structure preparation on the T-T Ranch, Camp Whitsett and Forest Service Campgrounds. Provide mitigation and reasonable protection for nationally significant natural resources within the Freeman Grove. Assist Ponderosa Structure Group and/or Nelson Structure Group as directed by The Operations Section Chief or Branch Director Branch Director.

Purpose: Protect values at risk from spreading fire by supporting perimeter control operations.

End State: Values at risk and communities are able to operate in pre-fire condition accounting for public safety.

Special Instructions

- Personnel to notify DIVS of potentially sensitive cultural materials.
- Castle Ambulance 3 staged at Whitsett Base Camp. Castle Ambulance 2 stage at Black Rock Ranger station. Castle REMS 1 available to all structure divisions.
- Prioritization of all control or containment actions taken during the operational period in this Division will be at the discretion of the DIVS. Actions may have to be taken by the DIVS that are not enumerated in today's IAP. These actions would be a result of a significant change in actual or expected fire behavior over and above that anticipated at the time the IAP was prepared. These actions will be coordinated with and approved by the OSC whenever possible.

Division/Group Communication Summary

Function	Channel	Frequency RX	Frequency TX	TONE	TONE	Function	Channel	Frequency RX	Frequency TX
				RX	TX				
COMMAND	1	170.0000	166.6750	151.4	151.4	A/G TAC	13	172.3500	172.3500
R5 T6	11	168.2375	168.2375	151.4	151.4	A/G CMD	14	169.1500	169.1500

Prepared by Anthony Watts - RESL(t)	Approved by Robin Jermyn - PSC	Date 9/8/2020	Time 1800
--	-----------------------------------	------------------	--------------

DIVISION ASSIGNMENT LIST				Branch		Division/Group				
Incident Name				STRUCTURE		NELSON				
SEQUOIA COMPLEX				Operational Period						
				Date: 9/10/2020 to 9/11/2020			Time: 0600-0600			
Operations Personnel										
Operations Chief		Brent Olson, Scott Schrenk Andy James (t) Shawn Borgen (t)			Branch Director		Drew Daily 405-431-9476			
Air Operations		Dennis Morton / John McKee Dan Sepulveda			Division/Group Supervisor		Hunter Seaborn Bell, III 406-670-5633			
Safety Officer		Tony Petrilli, Todd Mott (t) Dan Cassidy								
Resources Assigned This Period										
Strike Team/Task Force/ Resource Designator		Req#	Last Shift	Leader	# Persons	Drop Off Point /Time		Pick Up Point / Time		
HC2 Patrick 2	C-91	9/19	Austin Hergert	20	Whitsett Base 0600		Whitsett Base 2100			
S/T 2806A	E-280	9/18	Kevin Gotro	21	Whitsett Base 0600		Whitsett Base 2100			
S/T 5810A	E-281	9/18	Sal Gutierrez	22	Whitsett Base 0600		Whitsett Base 2100			
TFLD	E-246	9/20	Bill Castonquay	1	Whitsett Base 0600		Whitsett Base 2100			
ENG3 CO River	E-245	9/20	Randy Hill (t)	4	Whitsett Base 0600		Whitsett Base 2100			
ENG3 Greater Eagle	E-246	9/20	Wade Michels	5	Whitsett Base 0600		Whitsett Base 2100			
ENG6 Carlsbad 62	E-259	9/18	Scott Maxwell	3	Whitsett Base 0600		Whitsett Base 2100			
ENG6 Sandoval Brush 22	E-260	9/18	Harris Toya	3	Whitsett Base 0600		Whitsett Base 2100			
ENG6 Farmington Brush 6	E-261	9/18	Duane Bair	2	Whitsett Base 0600		Whitsett Base 2100			
ENG6 Sac Mtn 218	E-262	9/18	Barbara Stephens	3	Whitsett Base 0600		Whitsett Base 2100			
WTT2 K&B	E-236	9/18	James Davis	1	Whitsett Base 0600		Whitsett Base 2100			
WTT2 Trahan	E-237	9/18	Nicholas Trahan	2	Whitsett Base 0600		Whitsett Base 2100			
WTT2	E-242	9/20	Terry Titus	2	Whitsett Base 0600		Whitsett Base 2100			
WTT2 Sacramento Mtn	E-243	9/20	Ed Wishard	2	Whitsett Base 0600		Whitsett Base 2100			
WTT1 Oes WT139	E-282	9/18	Keith Smith	2	Whitsett Base 0600		Whitsett Base 2100			
WTT1 Oes WT42	E-283	9/18	Robin Serna	2	Whitsett Base 0600		Whitsett Base 2100			
WTT1 WT51	E-285	9/18	Richard Murillo	2	Whitsett Base 0600		Whitsett Base 2100			
SOF2	O-394	9/12	Gary Kemp	1	Whitsett Base 0600		Whitsett Base 2100			
EMPF	O-91	9/13	Royce Copeman	1	Whitsett Base 0600		Whitsett Base 2100			
EMPF	O-342	9/15	Yoshimi Toyota	1	Whitsett Base 0600		Whitsett Base 2100			
Work Assignments										
<p>Task: Support line Divisions with fireline perimeter control as instructed by Branch Director or Operations Section Chief. Reinforce structure protection plans with hose lays, static water supply and hazard mitigation as instructed by Group Supervisor for values at risk in Camp Nelson, Cedar Slope, Apline Village, Sequoia Crest and Pier Point. Assist Lloyd Structure Group and/or Ponderosa Structure Group as requested by Operations Section Chief or Branch Director.</p> <p>Purpose: Protect values at risk from wildfire impacts with emphasis on supporting fireline perimeter control well in advance of direct threats to communities and improvements.</p> <p>End State: Values at risk and communities are able to operate in pre-fire condition accounting for public safety.</p>										
Special Instructions										
<ul style="list-style-type: none"> Personnel to notify DIVS of potentially sensitive cultural materials. Castle Ambulance 3 staged at Whitsett Base Camp. Castle Ambulance 2 stage at Black Rock Ranger station. Castle REMS 1 available to all structure divisions. Prioritization of all control or containment actions taken during the operational period in this Division will be at the discretion of the DIVS. Actions may have to be taken by the DIVS that are not enumerated in today's IAP. These actions would be a result of a significant change in actual or expected fire behavior over and above that anticipated at the time the IAP was prepared. These actions will be coordinated with and approved by the OSC whenever possible. 										
Division/Group Communication Summary										
Function	Channel	Frequency RX	Frequency TX	TONE RX	TONE TX	Function	Channel	Frequency RX	Frequency TX	
COMMAND R5 T6	1	170.0000	166.6750	151.4	151.4	A/G TAC	13	172.3500	172.3500	
	11	168.2375	168.2375	151.4	151.4	A/G CMD	14	169.1500	169.1500	
Prepared by Anthony Watts – RESL(t)		Approved By Robin Jermyn - PSC				Date 9/09/2020			Time 1800	

10. TASK/ MISSION/ ASSIGNMENT (Type/ function includes: Air Tactical, Retardant, Recon, Personnel Transport, Bucket Operations, SAR, etc.)					
TYPE/FUNCTION	PRIORITY	NAME OF PERSONNEL OR CARGO (If applicable) or instructions for tactical aircraft	MISSION START	FLY FROM	FLY TO
ATGS		Provide continuous coverage over the fire as smoke and weather permits.	0900	PVT	Fire
Initial Attack		Initial Attack assistance as requested.	TBD	PVT/Peppermint	IA
Medevac		**See Medical Plan in IAP – Review during Division Breakouts**	TBD		Fire
Water Drops		As needed and approved by OPS, order through ATGS/HLCO	0900	PVT	Fire
Recon		Fire reconnaissance as requested.	0900	PVT	Fire
PSD		As needed and approved by OPS	0900	PVT	Fire
OTHER		(Back Haul, Re-Supply, Crew Movement) Place all orders through communications	0900	Peppermint	Fire

Helibase, Dip Sites, Pick Up Sites, etc.		Helibase, Dip Sites, Pick Up Sites, etc.	
Bridge Dip "B"	36 12.063' N, 118 27.445' W	H-12 Camp Nelson	36 08.368' N 118 36.917' W
Confluence Dip "B"	36 7.700' N, 118 26.316' W	H-20	36 10.960' N 118 29.259' W
Round Dip "B"	36 12.642' N, 118 28.000' W	H-21	36 12.650' N 118 30.230' W
Freeman "NR"	36 6.875' N, 118 27.551' W	C31	36 18.077' N 118 27.340' W
Beach Dip (X, U, N Only)	36 6.931' N, 118 17.824' W	C4	36 10.909' N 118 35.882' W
(MRB) Ranch Dip	35 58.494' N, 118 32.194' W	C11	36 0.630' N 118 23.448' W
H-1 T2	36 9.852' N, 118 26.985' W	DIV A Sling	36 10.948' N 118 29.360' W
H-2 T2	36 5.838' N, 118 26.806' W	Saddle Check	36 10.88' N 118 28.59' W
H-3 Black Rock T2	36 5.609 'N, 118 15.666' W	Ridge Check	36 8.55' N 118 26.72' W
H-4 T2	36 6.128' N, 118 25.772' W	Needle Check	36 5.89' N 118 27.59' W
H-5 Piles Camp	36 08.278' N, 118 28.678' W	Lookout IP, Enter 10000'	36 3.89' N, 118 27.51' W
H-6	36 06.155' N, 118 24.808' W	Porterville HB	36 01.427' N 118 4.112' W
H-7	36 06.833 N' 118 24.373 ' W	Peppermint HB	36 4.355' N 118 32.500' W
H-8	36 06.762' N 118 22.767' W	C31	36 18.077' N 118 27.340' W

Visibility Limitations VFR Flight Helicopters Day 1/2 statute mile Clear of clouds

Flights above ground level	Flight Permitted in Winds Less than / Maximum Gust Spread		
	Type 1 Helicopters	Type 2 Helicopters	Type 3 Helicopters
More than 500' AGL	<50kts / Gusts: N/A	<50kts / Gusts: N/A	<50kts / Gusts: N/A
Less than 500' AGL	<40kts / Max Gust Spread: 15kts	<40kts / Max Gust Spread: 15kts	<30kts / Max Gust Spread: 15kts

"We must always fear the wicked. But there is another kind of evil that we must fear the most, and that is the indifference of good men."

.... Bondock Saints, 1999....

INCIDENT RADIO COMMUNICATIONS PLAN			Incident Name SEQUOIA COMPLEX			Date/Time Prepared 9/09/2020			Operational Period Date/Time 9/10/20 0600 9/11/20 0600		
Ch #	Function	Channel Name/Trunked Radio System Talkgroup	Assignment	RX Freq N or W	RX Tone/NAC	TX Freq N or W	Tx Tone/NAC	Mode A, D or M	Remarks		
1	CMD REPEATER	NIFC C4	DIV A/B/Y/Z	170.0000	151.4	166.6750	151.4	A	JORDON PEAK		
2	CMD REPEATER	NIFC C11	DIV X	170.6875	151.4	166.5750	151.4	A	SHERMAN PEAK		
3	CMD REPEATER	NIFC C31	DIV L	172.5500	151.4	162.1875	151.4	A	COYOTE PEAK		
4	FOREST REPEATER	SQF CH2	ALL/BACKUP	169.9000		165.7000	103.5	A	SQF FOREST RPTR DISPATCH		
5	TACTICAL CHNL	NIFC T1	DIV A/NIGHT	168.0500	151.4	168.0500	151.4	A	SQF TACTICAL		
6	TACTICAL CHNL	NIFC T3	DIV B	168.6000	151.4	168.6000	151.4	A	SQF TACTICAL		
7	TACTICAL CHNL	NIFC T5	SWING	166.7250	151.4	166.7250	151.4	A	SQF TACTICAL		
8	TACTICAL CHNL	NIFC T6	DIV Y / Z	166.7750	151.4	166.7750	151.4	A	SQF TACTICAL		
9	TACTICAL CHNL	NIFC T7	DIV L / X	168.2500	151.4	168.2500	151.4	A	SQF TACTICAL		
10	TACTICAL CHNL	R5 T5	BLACK	167.1125	151.4	167.1125	151.4	A	SQF TACTICAL		
11	TACTICAL CHNL	R5 T6	NELSON/LLOYD	168.2375	151.4	168.2375	151.4	A	STRUCTURE TAC		
12	TACTICAL CHNL	VFIRE 25	POND	154.2875	156.7	154.2875	156.7	A	STRUCTURE TAC		
13	AIR TO GROUND	A/G TAC	A/G TAC	172.3500		172.3500		A	A/G TAC		
14	AIR TO GROUND	A/G CMD	A/G CMD	169.1500		169.1500		A	A/G CMD OVERHEAD ONLY		
15	TACTICAL CHNL	CALCORD	MEDEVAC	156.0750	156.7	156.0750	156.7	A	CALCORD MEDEVAC		
16	AIR GUARD	AIR GUARD	EMCY ONLY	168.6250		168.6250	110.9	A	AIR GUARD		
Prepared by (Communications Unit) COMM UNIT 406.581.9816 / COM1 DUSTIN SENE 406.581.9816					Incident Location SEQUOIA NF County State CA Latitude N Longitude 3-7-77 W						

The convention calls for frequency lists to show four digits after the decimal place, followed by either an "N" or a "W", depending on whether the frequency is narrow or wide band. Mode refers to either "A" or "D" indicating analog or digital (e.g. Project 25) or "M" indicating mixed mode. All channels are shown as if programmed in a control station, mobile or portable radio. Repeater and base stations must be programmed with the Rx and Tx reversed.

MEDICAL PLAN (ICS 206 WF)

Controlled Unclassified Information//Basic

1. Incident/Project Name		2. Operational Period						
Sequoia Complex		Date/Time 09/10/20 0600hrs-09/11/20 0600hrs						
3. Ambulance Services								
Name	Complete Address	Phone & EMS Frequency	Advanced Life Support (ALS) Yes No					
Imperial Ambulance (west side)	28551 Hwy 190, Porterville, CA	559-687-3309	<input checked="" type="checkbox"/>	<input type="checkbox"/>				
Hall Ambulance (east side)	1001 21st St, Bakersfield	661-327-4111	<input checked="" type="checkbox"/>	<input type="checkbox"/>				
Liberty Ambulance (Castle Ambulance 4)	ICP (Kern Valley High School)	Command frequency	<input checked="" type="checkbox"/>	<input type="checkbox"/>				
4. Air Ambulance Services								
Name	Phone	Type of Aircraft & Capability						
Kern County FD H408	657-464-7808	Incident Primary Air Rescue, Bell 205, ALS, 24/7 Hoist						
Skylife	800-305-5433	ALS, No Hoist, requires 100x100 LZ						
CHP H40 (Fresno)	559-262-0400	Air ambulance, ALS 24/7, DAY HOIST ONLY, NIGHT STAFFING ON CALL AFTER 1800 HRS						
US COAST GUARD	REGIONAL COMMAND CENTER 510-437-3701	AIR RESCUE, HOIST 24/7, NO IN-FLIGHT MEDICAL						
5. Hospitals								
Name Complete Address	GPS Datum – WGS 84 Coordinate Standard Degrees Decimal Minutes DD° MM.MMM' N - Lat DD° MM.MMM' W - Long		Travel Time Air Gnd		Phone	Helipad Yes No		Level of Care Facility
	Lat:	Long:	Min	hrs		Yes	No	
Kern Valley Hospital 6412 Laurel Ave Lake Isabella, CA	35 38.07'N	118 24.35W	30	2-3Hr	760-379-2681	<input checked="" type="checkbox"/>	<input type="checkbox"/>	Emergency Room
	VHF:							
	Sierra View Med Ctr 465 W Putnam Ave Porterville, CA			30	2-4.5 hrs	559-784-1110	<input type="checkbox"/>	
Long:								
VHF:								
Kaweah Delta Health 400 W. Mineral King Ave. Visalia, CA 93291	36 19.65'N	119 17.676'W	30	2.5-5 Hr	559-624-2000	<input checked="" type="checkbox"/>	<input type="checkbox"/>	Level 2 Trauma
	Long:							
	VHF:	468.0375 PL141.3 DTMF 3211 12K lb pad limit						
Kern Medical Center 1700 MT Vernon Ave.Bakersfield, CA 93306	35 22.95'N	118 58.182'W	45	2.5-3.75 hr	661-326-2000	<input checked="" type="checkbox"/>	<input type="checkbox"/>	Level 2 Trauma
	Long:		min					
	VHF:	463.100 12K lb pad limit						
Community Regional Medical Center 2823 Fresno St.Fresno, CA 93721	36 44.568'N	119 47.094'W	1 hr	3-5.25 hr	559-459-6000 ER 559-459-4220	<input checked="" type="checkbox"/>	<input type="checkbox"/>	Level 1 Trauma/ Burn Center
	Long:							
	VHF:	123.05 key 5times for lights 22K lb pad limit						
6. Division Branch Group		Area Location Capability						
Div A		EMS Responders & Capability:		REMS 1 (4 personnel)				
		Equipment Available on Scene:		ALS, extrication, utv				
		Medical Emergency Channel:		Command				
		ETA for Ambulance to Scene:						
		Air:		30 mins				
		Ground:		2 hrs				
		Approved Helispot:		H20				
		Lat:		36 10.960'N				
		Long:		118 29.259'W				

MEDICAL PLAN (ICS 206 WF)

Controlled Unclassified Information//Basic

1. Incident/Project Name	2. Operational Period	
Div B	EMS Responders & Capability:	Nick Stepanian, EMPF; Chris Inman, EMPF
	Equipment Available on Scene:	ALS,
	Medical Emergency Channel:	Command
	ETA for Ambulance to Scene:	
	Air:	30 min
	Ground:	2 hrs
	Approved Helispot:	H 20
	Lat:	36 10.960°N
	Long:	118 29.259°W
Div Y/Z	EMS Responders & Capability:	Silas Fischer EMPF; Patrick Garcia, EMTF; Tom Zamora EMPF; Castle ambulance 3
	Equipment Available on Scene:	ALS; ALS Ambulance
	Medical Emergency Channel:	Command
	ETA for Ambulance to Scene:	
	Air:	30 min
	Ground:	2 hrs
	Approved Helispot:	H1
	Lat:	36 9.852°N
	Long:	118 26.985°W
Div L/X	EMS Responders & Capability:	Tommy Kavanaugh, EMPF; Matthew Heckman, EMPF; REMS 2 (6 personnel)
	Equipment Available on Scene:	ALS
	Medical Emergency Channel:	Command
	ETA for Ambulance to Scene:	
	Air:	35 mins
	Ground:	Air only
	Approved Helispot:	H2
	Lat:	36 5.838°N
	Long:	118 26.806°W
Blackrock Backcountry	EMS Responders & Capability:	Scott Hamilton, EMPF; EMPF; Joshua Terry, EMPF; Castle Ambulance 2
	Equipment Available on Scene:	ALS; ALS Ambulance
	Medical Emergency Channel:	Command
	ETA for Ambulance to Scene:	
	Air:	35 mins
	Ground:	3 hrs
	Approved Helispot:	H 3
	Lat:	36 5.609°N
	Long:	118 15.666°W
Structure Nelson	EMS Responders & Capability:	Royce Copeman EMPF; Yoshimi Toyota EMPF;
	Equipment Available on Scene:	ALS
	Medical Emergency Channel:	Command
	ETA for Ambulance to Scene:	
	Air:	35 mins
	Ground:	3 hrs
	Approved Helispot:	Peppermint Helibase
	Lat:	36 4.355°N
	Long:	118 32.500°W
Night Div	Equipment Available on Scene:	Castle Ambulance 3 , Steve DeVencenzi EMTF
	Medical Emergency Channel:	Command
	ETA for Ambulance to Scene:	
	Air:	35 mins
	Ground:	2 hr
	Approved Helispot:	H 5
	Lat:	36 8.278°N
Long:	118 28.678°W	
Emily Ellick-Flettire-405-593-3369	09/09/2020	SOF2(t) Todd Mott 575-770-2359 9/9/20

MEDICAL PLAN (ICS 206 WF)
Controlled Unclassified Information//Basic
ASSIGNMENT-SPECIFIC MEDICAL EMERGENCY ACTION PLAN

Pre-Planning for today's assignment – See Page 2 IRPG

What are the likely hazards that could cause injuries? What kind of severe injuries?		
Who is the likely in-charge DIVS or overhead for an emergency in your assigned area today? (i.e. "Division Zulu")		
Who are the Medical personnel assigned to your part of the incident? What are their capabilities?		
Other Emergency Responders: fire dept, crash rescue, ambulance?		
Communications: Command channel, Air to Ground, Medical helicopters, local rescue/medical?		
Transportation methods available	Ground vehicle, drop point, coordinates, travel route?	
	Aircraft I.D, helispot names, coordinates? Hoist capable, internal transport	
	Other available methods - contingency	
Most likely workforce for evacuation		

Response checklist

Who takes charge?

- DIVS or designated Overhead manages the overall scene and evacuation process.
- Medical personnel and emergency responders manage patients and conduct rescues.
- OPS and IC make command decisions so the emergency can be given full attention and management. They continue to manage ongoing incident operations.

Response sequence:

- First, secure the scene and protect responders and patients from further injury.
- Clear the Command channel for "Emergency Traffic only" if this is a critical emergency. If not, inform Communications of non-critical-emergency status and use normal communications.
- Contact closest Medical personnel and DIVS or designated Overhead for response.
- Notify Communications to initiate Accident Action Plan response.

Information for Communications: (See Medical Incident Report, page 108, IRPG)

- Type and extent of injuries?
- Airway or breathing problems? Serious bleeding?
- Is an EMT present or needed? Are Paramedics (Advanced Life Support) needed?
- Specific location of patients (Lat/Long, access route, DP#, helicopter Landing Zone)?
- What type of transport is needed? Helicopter medevac, hoist, ambulance or ground transport?
- Name of contact person in charge of the scene.
- Do not use names of patients at any time.
- **Medical Emergency Responders confer with Medical Unit Leader and DIVS or designated Overhead to determine if this is a critical emergency and what type of transport is needed.**

REMOTE CHECK-IN

1. Scan the QR code on front of IAP to access the fillable check-in form. If you are unable to scan the code, please call Status/Check-in at **858-204-7419** for assistance.
2. Email qualification cards, manifests, contract, AD paperwork to:
2020.castle.finance@firenet.gov

Are You a TRAINEE?

1. Scan these codes to access the fillable *trainee* information forms. Send photo of qualification cards and task book cover to: **heather.e.grove@usda.gov** or **matthew.boss@usda.gov**



Registration



Check-out



Exit Interview

2. Call Incident Training Specialist 530-394-8076 (Heather) or 951-314-1427 (Matt) with questions from 0600 – 2100 daily.

DEMOBILIZATION IS NOW REMOTE!!

Demobilization Steps:

1. ALL accountable property checked-out from the incident must be returned (i.e. communications, supply). Items may be returned at Whitsett Base Camp or ICP.
2. Submit all finance documentation (time must be projected for travel home).
 - a. BE SURE to call Finance 1 day prior to your scheduled DMOB to ensure time is complete.
 - b. Only 1 representative per resource should go to Finance at ICP.
 - c. Abide by scheduled DMOB time or call Finance for an unscheduled DMOB.
 - d. Government agency resources that would like to close out their time 100% remotely should call **949-591-4123** when they are close to their DMOB date and make necessary arrangements to complete the process.
3. Scan the QR code on the front of the IAP to complete the DMOB process and start your travel home. **DO NOT LEAVE the incident until you have confirmed with Demobilization Unit Leader at 951-235-1568. If you have questions, please call!**

EXTENSIONS & RR

- Extensions or RR's MUST be requested by your incident supervisor and approved by your home unit supervisor prior to being processed.
- Extensions forms can be obtained from DMOB or the plans representative onsite at Camp Whitsett.

FINANCE MESSAGE

OPTIONS FOR SUBMITTING TIME:

1. **Fillable PDF CTR/Shift Ticket:** QR code to the fillable forms are included below. If you do not have QR capabilities finance can e-mail you the forms directly.



2. **Hard Copy CTR/Shift Ticket:** Fill out a hard copy CTR, snap a picture and email/text that into finance. If you send in a picture, please make sure it is legible and includes the supervisor's signature at the bottom! Please make sure to include your phone number in the **Remarks** in case we have questions.
 3. OR you may turn in your actual hard copy as usual at Whitsett Spike Camp & Troy Meadow.
- Please try to submit time at least every other day
 - H-Pay justifications are still required on your CTRs – “H = Hazard Pay” is not sufficient

2020.castle.finance@firenet.gov

Finance Main Line: 949-591-4123

Comp/Claims: 949-330-9973

TIP:

*****In order to use fillable pdf forms, you must have some version of Adobe Acrobat downloaded on your device. If you have any issues opening the documents call finance for assistance. *****



FINANCE

S# PROCESS

FEDERAL RESOURCES ONLY

- **PROPERTY LOSS-REPAIR-REPLACE OF NON-NATIONAL FIRE EQUIPMENT SYSTEM (NFES) OR NON-STANDARD CACHE ITEMS**

- **CAN IT BE REPLACED AT SUPPLY?**

1. **General message is needed (ICS 213) with contact information NAME/PHONE #/EMAIL/RESOURCE ORDER # send to Supply at 2020.castle.ordering@firenet.gov**

- **IF YOU NEED AN S# FOR REPLACEMENT BECAUSE SUPPLY DOES NOT HAVE IT PLEASE DO THE FOLLOWING**

2. **General message is needed (ICS 213) with contact information NAME/PHONE #/EMAIL/RESOURCE ORDER #. A description of property damage or loss needs to be documented and pictures of damaged items. Please send to finance at 2020.castle.finance@firenet.gov**

3. **We have Comp/Claims on site! Please reach out to us with any questions at 406-363-8956 or 406-366-3724.**



HUMAN RESOURCE MESSAGE

There is zero tolerance for drugs and alcohol on this fire incident.



Some people might be too tired to smile, so give them one of yours.

Spend your life lifting people up, not putting people down.

Debby Hassel, HRSP (406) 274-7985

hrspfire@gmail.com

09/10/2020

TENTATIVE RELEASE

CASTLE US-CA-SQF-002541

OVERHEAD

O-340	0800	(EMPF)	SPELLMAN, RONALD DUANE
O-176	0815	(FMOD)	FALLER MODULE - SMITH,
O-186	0830	(WFM2)	MODULE - WILDLAND FIRE -
O-341	0845	(EMPF)	SITAR, JOHN J
O-178	0900	(FMOD)	FALLER MODULE - TREE GUYS,
O-238	0915	(FFT1)	BALL, MATTHEW J
O-226	0930	(HMGB)	PEREZ, MICHAEL T
O-172	0945	(RADO)	VERNARECCI, DEAN
O-272	1300	(PIO2)	HARLAN, THOMAS E
O-159	1700	(DIVS)	ALLEN, BRAD HUTTON
O-215	1800	(PIOF)	MASON-BUSHMAN, TRAVIS

RESOURCE MESSAGE

The Sequoia Complex, burning in the Western Divide Ranger District, is advancing toward the Freeman Creek Grove, which sits between the fire and the community of Ponderosa, and is the home of the Bush Tree.

Use of bulldozers to construct fire lines when building hand lines is no longer effective within the giant sequoia groves in the path of the Sequoia Complex is approved. This approval includes the zones of influences for the groves as well.

The use of bulldozers in groves MUST have the approval of the Incident Commander and the Agency Administrator.

I expect the following management requirements to be adhered to:

- A Resource Advisor will be on site during all fire line construction when heavy equipment is used and notified immediately when it is determined that felling any giant sequoia tree is necessary.
- The Giant Sequoia National Monument Plan (Monument Plan) limits cutting sequoias larger than 12" dbh except in clear cases of threats to human safety.
- Keep the dozer line at least 10 feet from the drip line of giant sequoia trees greater than 12" dbh in order to avoid damaging the root systems.
- There may come a point where avoiding the drip line may make the fire line ineffective. If possible build hand lines in these situations.
- Where there are areas of very dense giant sequoia trees that are impossible to avoid, whether building line by hand or dozer, giant sequoias may be felled with the approval of the Resource Advisor.
- Tree felling criteria (Monument Plan, pp. 81-82) have been evaluated. The following criterion is applicable for this project.
 - F4. Public Safety: If maintaining one or more standing trees on site would create a public safety hazard. Forest Service policy is to eliminate safety hazards from recreation sites, administrative sites, and the public transportation system of roads and trails, including trees or tree limbs identified as hazardous (FSM 2330.6a).
 - The trees to be felled have been identified as hazards because leaving them standing would create a safety hazard for firefighters; both as potential falling hazards and by reducing the effectiveness of constructed fire lines. No giant sequoias over 12" dbh would be cut without prior approval.

Don't Forget....

Reporting of Cultural Sites

- Do not use the radio. Looters listen to our frequencies and will note where you find things.
- Grab a GPS point, bump it up the chain of command or directly inform a READ.

Food on the Line Attract Wildlife Over Time.

- Keep food off the line as much as possible. It lures in wildlife, especially on indirect and contingency lines. Food attracts wildlife to humans and can cause future issues (i.e. bears looking for food in camps).

Sensitive Areas

- READs will be flagging sensitive areas during the incident.
- By default, please avoid going into these areas.
- The two flagging colors used are a strip of blue and a strip of red.
- For more information, please consult with a READ.

Keep Up the Good Work!

Continue to do good work for cultural and natural resources by doing the following:

- Picking up trash/micro-trash.
- Removing unused flagging.
- Sharing information and working alongside READs.
- When moving on to a new area, leaving the old area better than you found it.

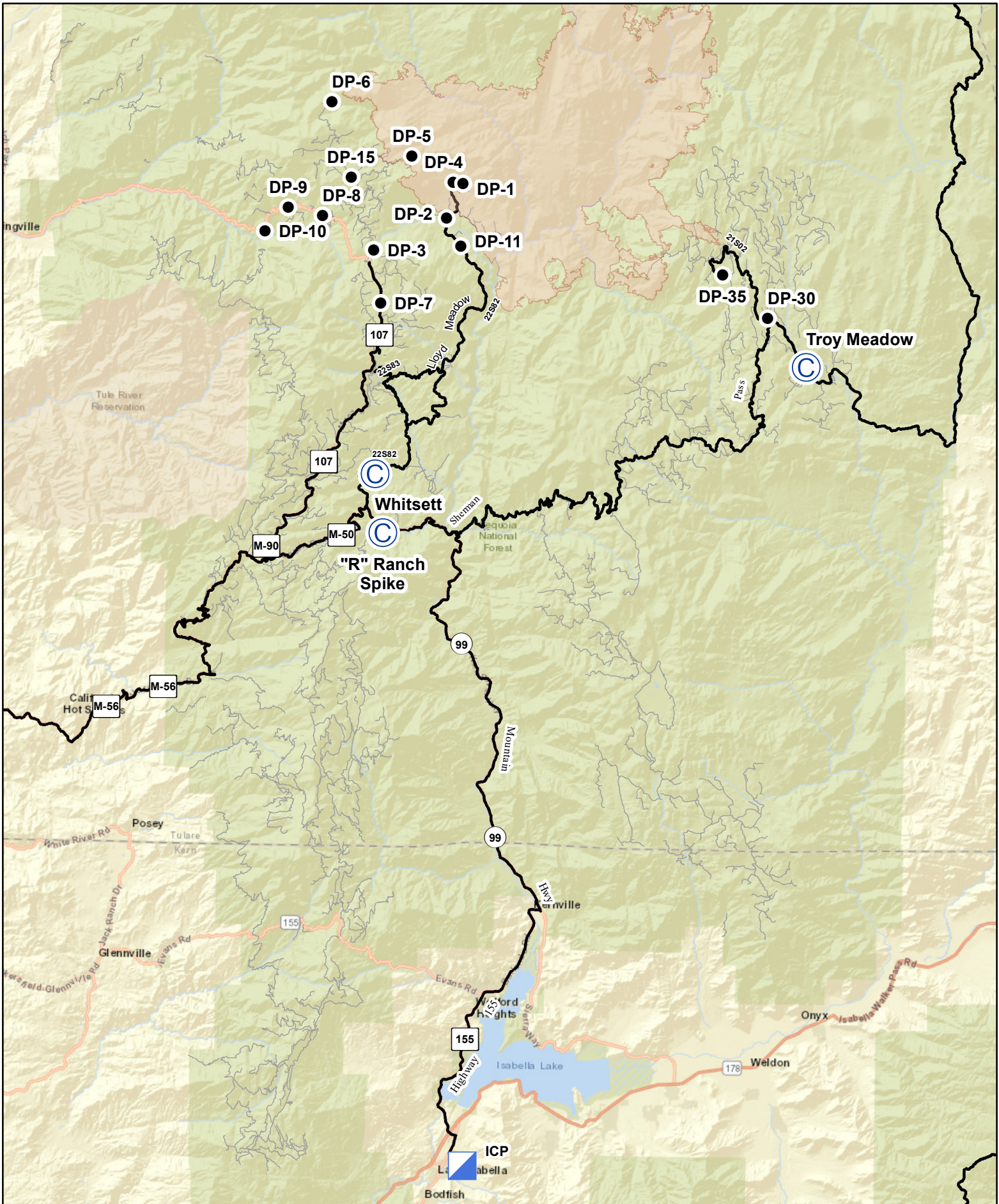


Northern Rockies Team 1

SEQUOIA COMPLEX

PHONE LIST

POSITION	NAME	MOBILE PHONE
SAFETY		
Safety Officer 1	Petrilli, Tony	406-370-5996
PUBLIC INFORMATION		
Public Information Officer 1	Smith, Jeannette M	406-544-0131
LIAISON		
Liaison Officer	Taylor, Robert L	406-554-4679
OPERATIONS		
Operations Section Chief 1	Olson, Brent H	406-249-4994
Line Ops	Schrenk, Scott	406-250-0354
Air Ops	Morton, Dennis	406-660-2318
PLANNING		
Planning Section Chief	Jermyn, Robin	406-360-5936
Planning Section Chief (t)	Carlin, Rob	406-249-1989
Deputy Planning Chief	Gump, Robert	850-688-7623
Status Check In	Heinsch, Faith Ann	858-204-7419
DEMOB	Murphy, Tanya	951-235-1568
Training Specialist	Boss, Matt	951-314-1427
Sequoia NF READ	Courter, Josh	559-920-7023
Inyo NF READ	Barnett, Adam	760-920-8104
LOGISTICS		
Logistics Section Chief 1	Showers, Charles	406-531-3691
Ordering Manager	Lind, Rita	406-291-3012
Supply Unit Leader	King, Josh	406-855-0984
Communications Unit Leader	Sene, Dustin	406-581-9816
COVID-19 Medical	Gaul, Roylene	406-381-6888
FINANCE		
Finance Section Chief 1	Schrenk, Amy	406-830-5214
General Finance Information		949-591-4123
COMP/CLAIMS		949-330-9973



0 5 10 Miles

Transportation Sequoia Complex

CA-SQF-002622
09/09/20



MEDICAL PLAN (ICS 206 WF)

Controlled Unclassified Information//Basic

Medical Incident Report

FOR A NON-EMERGENCY INCIDENT, WORK THROUGH CHAIN OF COMMAND TO REPORT AND TRANSPORT INJURED PERSONNEL AS NECESSARY.

FOR A MEDICAL EMERGENCY: IDENTIFY ON SCENE INCIDENT COMMANDER BY NAME AND POSITION AND ANNOUNCE "MEDICAL EMERGENCY" TO INITIATE RESPONSE FROM IMT COMMUNICATIONS/DISPATCH.

Use the following items to communicate situation to communications/dispatch.

1. CONTACT COMMUNICATIONS / DISPATCH (Verify correct frequency prior to starting report)

Ex: "Communications, Div. Alpha. Stand-by for Emergency Traffic."

2. INCIDENT STATUS: Provide incident summary (including number of patients) and command structure.

Ex: "Communications, I have a Red priority patient, unconscious, struck by a falling tree. Requesting air ambulance to Forest Road 1 at (Lat./Long.) This will be the Trout Meadow Medical, IC is TFLD Jones. EMT Smith is providing medical care."

Severity of Emergency / Transport Priority	<input type="checkbox"/> RED / PRIORITY 1 Life or limb threatening injury or illness. Evacuation need is IMMEDIATE <i>Ex: Unconscious, difficulty breathing, bleeding severely, 2° – 3° burns more than 4 palm sizes, heat stroke, disoriented.</i> <input type="checkbox"/> YELLOW / PRIORITY 2 Serious Injury or illness. Evacuation may be DELAYED if necessary. <i>Ex: Significant trauma, unable to walk, 2° – 3° burns not more than 1-3 palm sizes.</i> <input type="checkbox"/> GREEN / PRIORITY 3 Minor Injury or illness. Non-Emergency transport <i>Ex: Sprains, strains, minor heat-related illness.</i>
Nature of Injury or Illness & Mechanism of Injury	Brief Summary of Injury or Illness <i>(Ex: Unconscious, Struck by Falling Tree)</i>
Transport Request	<i>Air Ambulance / Short Haul/Hoist Ground Ambulance / Other</i>
Patient Location	<i>Descriptive Location & Lat. / Long. (WGS84)</i>
Incident Name	<i>Geographic Name + "Medical" (Ex: Trout Meadow Medical)</i>
On-Scene Incident Commander	<i>Name of on-scene IC of Incident within an Incident (Ex: TFLD Jones)</i>
Patient Care	<i>Name of Care Provider (Ex: EMT Smith)</i>

3. INITIAL PATIENT ASSESSMENT: Complete this section for each patient as applicable (start with the most severe patient)

Patient Assessment: See IRPG PAGE 106

Treatment:

4. TRANSPORT PLAN:

Evacuation Location (if different): *(Descriptive Location (drop point, intersection, etc.) or Lat. / Long.)* Patient's ETA to Evacuation Location:

Helispot / Extraction Site Size and Hazards:

5. ADDITIONAL RESOURCES / EQUIPMENT NEEDS:

Example: Paramedic/EMT, Crews, Immobilization Devices, AED, Oxygen, Trauma Bag, IV/Fluid(s), Splints, Rope rescue, Wheeled litter, HAZMAT, Extrication

6. COMMUNICATIONS: Identify State Air/Ground EMS Frequencies and Hospital Contacts as applicable

Function	Channel Name/Number	Receive (RX)	Tone/NAC *	Transmit (TX)	Tone/NAC *
COMMAND					
AIR-TO-GRND					
TACTICAL					

7. CONTINGENCY: Considerations: *If primary options fail, what actions can be implemented in conjunction with primary evacuation method? Be thinking ahead.*

8. ADDITIONAL INFORMATION: *Updates/Changes, etc.*

REMEMBER: Confirm ETA's of resources ordered. Act according to your level of training. Be Alert. Keep Calm. Think Clearly. Act Decisively.

