

VALUES AT RISK



Firefighters and Public Safety Communities

- *Ponderosa, Camp Nelson, Pyles Boys Camp, Rogers Camp, Sequoia Crest, Cedar Slope, Alpine Valley, Redwood Drive, Lloyd Meadows, Mountain Aire, Pierre Point, and Coy Flat*

Infrastructure

- *Osa Meadows, Beck Meadows, USGS Seismic Station, High-Use Recreation Areas, Campgrounds, Trailheads and Facilities*

Natural Resources and Cultural Values

- *Freeman Giant Sequoia Groves, Little Kern Golden Trout, Mountain Yellow Legged Frog, and Sierra Nevada Bighorn Sheep Habitats*
- *Archaeological and Cultural Resources*
- *Riparian Areas*

OPERATIONAL PERIOD

Tuesday September 8, 2020
Wednesday September 9, 2020
0600 to 0600



SEQUOIA COMPLEX

Incident Action Plan

CA-SQF-002622 P5NG2P (0513)

INCIDENT OBJECTIVES	1. Incident Name SEQUOIA COMPLEX	2. Date Prepared 9/7/2020	3. Time Prepared 1600
	4. Operational Period		
September 8, 2020 0600 to September 9, 2020 0600			
5. General Control Objectives for the Incident			
<ul style="list-style-type: none"> • Limit growth of the Castle Fire by establishing a holding line that is safe for firefighters and offers high probability of success to keep the fire: <ul style="list-style-type: none"> ○ North of Durr Wood Camp ○ South of Sequoia Kings Canyon Wilderness Boundary ○ East of Highway 190 to Summit Trail ○ West of Toowa Range to King Fisher Ridge to 22S05 Road • Monitor the spread/growth of the Shotgun Fire using air operation assets. • Protect and minimize impacts to identified values at risk including the communities of Ponderosa, Camp Nelson, Pyles Boys Camp, Rogers Camp, Cedar Slope, Sequoia Crest, Alpine Valley, Redwood Drive, Lloyd Meadows, Mountain Aire, Pierre Point, and Coy Flat, as well as Freeman Giant Sequoia Grove, Osa and Beck Meadows, trailheads and facilities. • Coordinate with the Sequoia NF Duty Officer on support to any new initial attack. 			
6. Management Objectives			
<ul style="list-style-type: none"> • Implement suppression actions that have a high potential for success, carefully weighing risk exposure to firefighters. • Provide for the safety of firefighters, aviation and public through clear communication. Ensure an understanding of strategies and tactics, including a clearly defined and obtainable end state, in order to facilitate sound risk mitigation decision making. • Implement social distancing and adhere to the “module of one” concept to reduce physical exposure and transmission of COVID-19, to provide for the health and safety of all incident personnel. • Minimize to the extent feasible smoke exposure to firefighters, communities and other affected areas to reduce susceptibility to the consequences from COVID-19 exposure. • Maintain and strengthen relationships with partner agencies, stakeholders, cooperators, community leaders, and local agencies utilizing most effective platforms available. • Minimize adverse effects from suppression actions on riparian areas, wetlands, Little Kern Golden Trout, Mountain Yellow Legged Frog, and Sierra Nevada Bighorn Sheep habitats. • Minimize impacts to Wilderness areas; use minimum impact suppression tactics (MIST) by utilizing trails, streams, ridges and natural barriers when possible for control lines. 			
7. Commander’s Intent			
<ul style="list-style-type: none"> • Safety: Address fire fighter, public, and aviation safety through hazard/exposure mitigation. • Communication: We will keep the Agency Administrators informed of significant accomplishments and issues. • Risk Management: We will use a robust risk assessment process to mitigate unnecessary risk to fire fighters and update and/or revise decisions as necessary. • Human Resources: We will ensure that all incident personnel be treated with dignity and respect. We have a zero tolerance for harassment, alcohol, or illegal drug use. • Operations: We will make informed tactical decisions engaging the fire in the right locations with the appropriate resources. • Public Information: We will provide timely and accurate information through the press, meetings, trap lines, briefings, and social media. • Stakeholders: We will coordinate with the delegating agencies to identify key partners and keep them effectively informed of progress and to use their local knowledge. • Finance: We will establish and monitor cost effective methods for accomplishing incident objectives. 			
8. ATTACHMENTS (X IF ATTACHED)			
[X] Organization List - ICS 203		[X] Medical Plan - ICS 206	[] _____
[X] Division Assignment Lists - ICS 204		[X] Unit Log 214	[] _____
		[X] WF206 8 Line	[] _____
9. Prepared By (Planning Section Chief)		10. Approved By (Incident Commander)	
Rob Carlin PSC1 (t)		Michael Goicoechea IC	

ORGANIZATION ASSIGNMENT LIST				Operations Section	
1. Incident Name		Sequoia Complex		Field Operations	Scott Schrenk / Andy James (t)
2. Date Prepared	9/7/2020	3. Time Prepared	1700	Planning Operations	Brent Olson 406.249.4994 / Shawn Borgen (t)
4. Operational Period				Branch I Director	Justin Kaber
September 8, 2020 to September 9, 2020				Branch V Director	Ryan Butler / Logan Sanders (t)
0600 to 0600				Structure Branch	Drew Daily
Incident Commander and Staff				Branch I	
Incident Commander	Mike Goicoechea			Alpha	Kate Airhart
Deputy	Mark Goeller / Greg Poncin			Bravo	Rocky Wagoner
Safety Officer	Tony Petrilli 406.370.5996 / Todd Mott (t)			Charlie	Unstaffed
Information Officer	Jeannette Smith 406.544.0131			Golf	Unstaffed
Liaison Officer	Rob Taylor 406.544.4679			Yankee / Zulu	Stryker Clark
Agency Representative				Branch V	
SQF AA	Constance Cummins			Black Rock / Backcountry	Geoff Farinholt
SQF AR	Al Watson			India	Unstaffed
SQF READ	Adam Barnett 760.920.8104			Lima / X-Ray	Mike King / Graydon Galloway (t)
INF AR	David Andersen			November	Unstaffed
INF AA	John (Pancho) Smith			Uniform	Unstaffed
INF READ	Adam Barnett 760.920.8104				
SEKI AA	Lee Taylor				
SQF Chief 1	Angie Sanchez-Hand			Structure	
Sequoia & Kings NPS	Dan Morford			Lloyd	Bryan Duffy
Tulare Co FD	Jeff McLaughlin			Nelson	Hunter Seaborn Bell, III
SoCAL Edison	Troy Whitman			Ponderosa	Brad Allen
CHP	Chad Patton				
Tribal Liaison	Dirk Charley 559-554-5433			Night	
Tule River Tribe – FMO	Zane Santos 559.339.8686			Night	John Lange (t)
Planning Section					
Section Chief	Robin Jermyrn 406.360.5936 / Rob Carlin (t)				
Deputy	Rob Gump 850.688.7623				
Situation Unit	Derek Trauntvein / Lance Robinson 208.421.5969				
Demobilization Unit	Tanya Murphy 951.235.1568				
Resources Unit Leader	Anya Moline 406.366.1979 / Anthony Watts (t)				
Status Check-in	Faith Ann Heinsch 858.204.7419				
Fire Behavior Analyst	Brian Anderson 406.660.0450 / David Greathouse			Air Operations Branch	
Long-Term Analyst	Lawen Hollingsworth 406.552.5440 / Alicia Reiner (t)			Air Operations Branch Director	Dennis Morton 406.660.2318
GIS Specialist	Erin Heiselmann 406.546.4014 Nate Meyer 307.761.1541 / McIntyre Murphy (t)			Air Support Group Supervisor	
Computer Specialist	Tim McCracken 303.859.7753 / John Vaisa (t)			Air Tactical Group Supervisor	Tony Duprey
Meteorologist	Dan Byrd			Finance Section	
Human Resource	Debby Hassel / Andrea Cabida 707.330.9939			Section Chief	Amy Schrenk 406.830.5214
Training Specialist	Heather Grove 530.394.8076 / Matt Boss (t)			Time Unit	Marta Lujan 970.275.3120
Logistics Section				Equipment Time	Lynda Pike 406.382.0086
Section Chief	Charlie Showers 406.370.3787 / Roylene Gaul Jim Evanoff 406.223.8660 / LeRoy Evans (t)			Personnel Time	Tama Lester 580.212.1017
Ordering Manager	Rita Lind 310.650.1222 or 423.534.9699 Kristin Troop (virtual)			Cost Unit	Khon Viengkham 703.217.7269
Supply Unit	Josh King 406.855.0984 / Brent Elmore			Procurement Unit Leader	Dana Bangart 406.360.0029
Facilities Unit	James Andruzzi 917.443.2556 Bill Fitch / Matt LaTray			Comps / Claims	Leon Augustine 406.363.8956 Shannon Maxwell 406.366.3724
Base Camp	Patrick Beers (t) 253.318.7992			IBA	Nancy Gibson
Ground Support Unit	Keith Windell 406.531.2987				
Communications Unit	Dustin Sene 406.531.2987				
Communications Tech	Trent Coppinger 406.581.9816				
Medical Unit	Emily Ellick-Flettre 405.593.3369 / Brett Clymer			Prepared by:	Anya Moline - RESL

SAFETY AND HUMAN HEALTH MESSAGE

Fire Fighter Fatigue

As fire activity increases, it becomes more and more essential that personnel assigned to duty for extended periods of time pay close attention to their level of fatigue. Fatigue is often underestimated by individuals. In fact, numerous studies have identified that significant impacts of fatigue on the human body are often not realized until something negative occurs. **A few key points to keep in mind:**

- **Repeated loss or lack of sleep results in a phenomenon known as “sleep debt.”**
- **The “quality” of sleep is just as essential as the quantity of sleep.**
- **Adequate work/rest cycles should be followed to prevent negative effects of fatigue.**

Fatigue can manifest itself in a variety of forms. It is extremely important that individuals, crews, Team members, support staff, etc., all become aware of the signs and symptoms of fatigue and recognize when intervention is necessary. Supervisors must be informed of potentially dangerous conditions. **The effects of fatigue can directly impact our abilities to:**

- **Perform various tasks**
- **Maintain situational awareness and a high degree of alertness**
- **React appropriately in a timely manner and fashion**
- **Retain a sharp memory and recollection of information**
- **Efficiently process information and make sound decisions**
- **Maintain a positive and supportive attitude**
- **Control levels of frustration, irritation and aggression**

Humans are historically poor at estimating their own levels of fatigue. Accidents occurring as a result of fatigue can be easily prevented by recognizing the signs and alerting supervisors. Supervisors must be diligent in evaluating themselves and their crew for such signs as listed above.

Critical operations do not always lend themselves to afford adequate rest. Incident Commanders, supervisors and individuals must learn to recognize the signs and symptoms of fatigue and report when the presence of such does not provide for safe operations.

Operational objectives, strategy and tactics might require modification in order to provide the safest environment for weary resources. Individuals must be proactive in pursuing adequate rest for themselves and avoiding the traps of fatigue. Take advantage of the work/rest cycles provided and get “quality” rest and sleep. Practice good hygiene and eating habits. Remain hydrated by drinking plenty of fluids before, during and after work shifts. Avoid caffeinated drinks such as coffee, soda and “energy” drinks, which often have the opposite effects of hydration. **Report any unsafe levels of fatigue, injuries or illnesses to your immediate supervisor.**

Team Safeties: Tony Petrilli (SOF1); Dan Cassidy (SOF1); Todd Mott (SOF2(t))



FIRE WEATHER FORECAST



FORECAST NO: 15
PREDICTION FOR: Sept 8-9, 2020 0600-0600

INCIDENT NAME: Sequoia Complex

UNIT: CA-SQF
SIGNED: *Dan Byrd*

TIME AND DATE
FORECAST ISSUED: Mon, Sep 7 @ 2000 hours

Incident Meteorologist – Dan Byrd

WEATHER DISCUSSION: A trough of low pressure will swing south across the four corners region today and with high pressure to the west, the winds will remain out of the northwest early today, but will become westerly this afternoon. Expect smoke from the Creek Fire to once again shade the fire again today, but as the winds become more westerly this afternoon, the bulk of the smoke may push north of the Sequoia Complex. Temperatures will be cooler today, but RH's will still fall into the low to mid-teens. RH recoveries will remain poor overnight. The upper low will begin to move northeast on Wednesday, and high pressure ridging will re-establish itself over the region by Thursday and continue into the weekend.

SKY/WEATHER TODAY (TUESDAY): Cooler, dry and smoky. Sunny, but expect dense smoke from the Creek Fire to continue to shade the Sequoia Complex. Depending on the amount of smoke from the Creek Fire and a westerly afternoon winds, the inversion may break by 1300-1400.

MAX TEMPERATURES / MIN RELATIVE HUMIDITY:

5000 FT: 85 to 91 degrees (Down 7-9 Degrees) / 10 to 15% (Up 1-3%)
7000 FT: 75 to 82 degrees (Down 7-9 Degrees) / 15 to 20% (Up 2-4%)

EYE LEVEL WINDS:

Slope/Valley: Morning drainage winds will become south to southwest after 1200-1300 with speeds 4 to 6 gusts to 10 G14 mph. Winds will continue to be heavily impacted by local terrain and shading from the smoke.

Ridges: Northwest 5 to 10 G20 mph becoming West 10 to 15 G20 mph in the afternoon.

MIXING HEIGHT...9,000 FT AGL **VENTILATION...** Moderate
TRANSPORT WIND...Northwest around 5 mph in the morning, shifting to the west in the afternoon 10 to 15 mph.
CWR (0.10")....0% **LAL**....1 **HAINES**....5

SKY/WEATHER TONIGHT (TUESDAY NIGHT): Mostly clear and cooler with heavy smoke in the Kern River Valley. North to northeast 3 to 6 mph. Squirrely winds could occur near the confluence of the Little Kern/Kern Rivers. Overnight RH recoveries will remain poor.

MIN TEMPERATURES / MAX RELATIVE HUMIDITY

5000 FT: 53 to 58 degrees (Down 4-6) / 20 to 25% (Steady)
7000 FT: 55 to 60 degrees (Down 5-7) 17 to 23% (Steady)

EYE LEVEL WINDS:

Slope/Valley: North to northeast 3 to 6 mph.
Ridges: Northwest 10 mph.

CWR (0.10")....0% **LAL**....1

WEDNESDAY: Inversion lifting by 1100-1200 depending on smoke from the Creek Fire. Mostly sunny, cooler but smoky with continued low RH.

Max Temps: 77 to 87. **Min RH:** 12 to 17%. **Winds: Slope/Valley:** Morning drainage winds becoming south to southwest 5-10 G14 mph in the afternoon. **Ridge:** West to Northwest 5 to 10 mph becoming southwest 5 to 10 G15 mph in the afternoon.

LAL: 1 **CWR (0.10"):** 0% **MIXING HEIGHT:** 8,000 FT AGL **HAINES:** 4

OUTLOOK for THURSDAY through SATURDAY:

THURSDAY: Mostly Sunny. **High Temp:** 76-92. **Ridge Wind:** SW-W 6-10 mph.

FRIDAY: Mostly Sunny. **High Temp:** 78-94. **Ridge Wind:** S-SW 6-10 mph.

SATURDAY: Mostly Sunny. **High Temp:** 80-99. **Ridge Wind:** S-SW 8-12 mph.

FIRE BEHAVIOR FORECAST

FORECAST NUMBER: 18

TYPE OF FIRE: Wildland

FIRE NAME: Sequoia Complex

OPERATIONAL PERIOD: 9/8/2020: 0600-0600

DATE ISSUED: September 7, 2020

TIME ISSUED: 1800

UNIT: CA-Sequoia National Forest

SIGNED: /s/ David Greathouse FBAN

WEATHER SUMMARY

****Another Smoky Warm Day Today****

(See Weather forecast for details)

Weather thresholds for large fire growth: Temp: >83 deg, RH <20%, 20ft winds >7mph

FIRE BEHAVIOR

GENERAL

Fuels- The fuels that dominate the Castle fire are primarily mixed conifer with a heavy component of dead and down material. In the lower elevations and especially in the fire scars, a mix of shrub and grass/shrub can be found. Heavy pockets of beetle killed timber can also be found throughout the fire area. The fuels in the Shotgun fire are primarily grass and grass/shrub. The fuels are very dry for this time of year. The ERC's are currently above the 97th percentile, and the 100-hr and 1000-hr fuels are at 5% and 8%. These indices indicate that all dead fuel will contribute to fire intensity.

Topography- Topography in the fire area is dominated by the Kern River. This river drainage runs north/south and is steep and narrow, roughly bisecting the fire area down the middle. Terrain has played a central role in fire spread, taking the predominantly SW flow and directing it in every way imaginable across the fire area.

Parameters for Behave Run: 1hr:2, 10hr:4, 100hr:7 Temp: 100 Slope avg: 30%

	Max Rate of Spread	Max Flame Lengths	Spotting Distances	POI
Grass	80-100 ch/hr.	6-10'	½ mi	80%
Grass/Shrub	50-70 ch/hr.	6-10'	½ mi	80%
Timber	14-20 ch/hr	5-7'	¼ mi	80%

Rule of Thumb: Cut head fire flame lengths in half for flanking fire, backing fire 2'-4' flame lengths

SPECIFIC

All Divisions: Active fire behavior will be seen on all divisions today. Expect active surface fire spread with occasional single tree and group tree torching. In areas where wind and slope align, short crown fire runs can be observed. Spotting is probable in all fuel types today. Expect burning conditions to increase around 1000, peak between 1600-1700 before moderating after sunset.

Div A/Z – Expect the fire to continue to flank west further into the Freeman Creek Sequoia Grove today. The wind is in your favor today, so I do not expect spotting. However, pay attention to the southern end of your fire. Do not let it get ahead of you and make a run uphill.

Div L – The forecasted winds are not your friend today. Expect to see your fire continue to move SE toward Beach meadows. Forward progress by the end of shift could match what was seen yesterday. Be heads up, spotting is probable on your division

Div B – Expect the fire to continue to move west against the wind. Forward progress by the end of shift could match what was seen yesterday.

Shotgun Fire The fire is following mainly brush fuels with short uphill runs when established on the lower 1/3 of the slope. Spread is not likely to be significant due to the lack of surface fuels.

AIR OPERATIONS

Smoke may have an impact on air operations today, especially on the east side of the fire

SAFETY

“It's the little details that are vital. Little things make big things happen”

-John Wooden

DIVISION ASSIGNMENT LIST				Branch		Division/Group				
Incident Name				I		ALPHA				
SEQUOIA COMPLEX				Operational Period						
				Date: 9/8/2020 to 9/9/2020			Time: 0600-0600			
Operations Personnel										
Operations Chief		Brent Olson, Scott Schrenk Andy James (t) Shawn Borgen (t)			Branch Director		Justin Kaber 406-250-1455			
Air Operations		Dennis Morton Dan Sepulveda			Division/Group Supervisor		Kate Airhart 406-360-0506			
Safety Officer		Tony Petrilli, Todd Mott (t) Dan Cassidy								
Resources Assigned This Period										
Strike Team/Task Force/ Resource Designator		Req#	Last Shift	Leader		# Perso ns	Drop Off Point /Time		Pick Up Point / Time	
HC1 Fulton	C-67	9/15	Josh Acosta		20	Whitsett Base 0600		Whitsett Base 2100		
HC1 Vista Grande	C-54	9/12	Jess Estrada		19	Whitsett Base 0600		Whitsett Base 2100		
HC2 Patrick1	C-90	9/19	Joshua Chilest		20	Whitsett Base 0600		Whitsett Base 2100		
HC2 Patrick 2	C-91	9/19	Austin Hergert		20	Whitsett Base 0600		Whitsett Base 2100		
HC2 Fery	C-92	9/19	Ryan Hoffman-Wentling		20	Whitsett Base 0600		Whitsett Base 2100		
WFM Sequoia	O-266	9/12	Aaron Woodyard		8	Whitsett Base 0600		Whitsett Base 2100		
TFLD (t)	O-336	9/14	Scott Turner		1	Whitsett Base 0600		Whitsett Base 2100		
HEQB	O-415	9/14	Joshua Perkins		1	Whitsett Base 0600		Whitsett Base 2100		
ENG6 High Desert	E-137	9/12	Thomas Hanks		3	Whitsett Base 0600		Whitsett Base 2100		
ENG6 Red Dog	E-167	9/12	Tim England		2	Whitsett Base 0600		Whitsett Base 2100		
WTT2 Dust Busters	E-49	9/10	Nathan Stutz		2	Whitsett Base 0600		Whitsett Base 2100		
WTT2 49ers	E-50	9/10	Steve Smith		1	Whitsett Base 0600		Whitsett Base 2100		
WTT2 SQF WT2	E-114	9/9	Jaime Ayaly		2	Whitsett Base 0600		Whitsett Base 2100		
WTT2 CNF WT222	E-145	9/12	Andrew Peterson		2	Whitsett Base 0600		Whitsett Base 2100		
DOZ2 Westlund	E-139	9/12	Alan Westlund		2	Whitsett Base 0600		Whitsett Base 2100		
DOZ2 ANF 12	E-142	9/10	Doug Lander		2	Whitsett Base 0600		Whitsett Base 2100		
EXC2 Sandborg	E-179	9/13	Chuck Sandborg		2	Whitsett Base 0600		Whitsett Base 2100		
EXC2 Denis Equip	E-188	9/15	Anthony Pezzi		2	Whitsett Base 0600		Whitsett Base 2100		
GRD2 Kirklang	E-97	9/9	Todd Adams		2	Whitsett Base 0600		Whitsett Base 2100		
CHIP1 Siskiyou	E-184	9/16	Dennis Lange		2	Whitsett Base 0600		Whitsett Base 2100		
CHIP1 Wyeas Forestry	E-192	9/16	Ryan Grigsby		2	Whitsett Base 0600		Whitsett Base 2100		
MAST Shannon Bros	E-186	9/13	Chuck Sandborg		1	Whitsett Base 0600		Whitsett Base 2100		
FALM Tree Guys	O-178	9/9	Chase Bishop		2	Whitsett Base 0600		Whitsett Base 2100		
SOFR	O-183	9/11	Joseph Fowler		1	Whitsett Base 0600		Whitsett Base 2100		
SOFR (t)	O-171	9/9	Eric Klemowicz		1	Whitsett Base 0600		Whitsett Base 2100		
REMS	O-332	9/13	REMS		4	Whitsett Base 0600		Whitsett Base 2100		
REAF	O-277	9/11	Scott Dailey		1	Whitsett Base 0600		Whitsett Base 2100		
REAF (t)	O-398	9/17	Noah Hirsch		1	Whitsett Base 0600		Whitsett Base 2100		
Work Assignments										
<p>Task: Evaluate fire progression of the slop over between DP 5 and H20, develop a suppression plan and implement. Coordinate suppression actions with Y/Z and B. Take action to prevent fire from moving into the identified areas of values to be protected.</p> <p>Purpose: Keep the fire spread east of Lloyd Meadow Road, north of Ponderosa and Mountain Home community.</p> <p>End State: Limit fire spread into additional values at risk to protect communities and infrastructure.</p>										
Special Instructions										
<ul style="list-style-type: none"> Fulton HC1 should be prepared to work a swing shift. Personnel to notify DIVS of potentially sensitive cultural materials. Castle Ambulance 1 staged at Whitsett Base Camp. Castle Ambulance 2 stage at R Ranch Spike. Castle REMS available to all DIVS. Prioritization of all control or containment actions taken during the operational period in this Division will be at the discretion of the DIVS. Actions may have to be taken by the DIVS that are not enumerated in today's IAP. These actions would be a result of a significant change in actual or expected fire behavior over and above that anticipated at the time the IAP was prepared. These actions will be coordinated with and approved by the OSC whenever possible. 										
Division/Group Communication Summary										
Function	Channel	Frequency RX	Frequency TX	TONE RX	TONE TX	Function	Channel	Frequency RX	Frequency TX	
COMMAND	1	170.0000	166.6750	151.4	151.4	A/G TAC	13	172.3500	172.3500	
NIFC T1	5	168.0500	168.0500	151.4	151.4	A/G CMD	14	169.1500	169.1500	
Prepared by Anya Moline – RESL		Approved By Robin Jermyn - PSC				Date 9/7/2020			Time 1800	

DIVISION ASSIGNMENT LIST		Branch	Division/Group
Incident Name		I	BRAVO
SEQUIOA COMPLEX		Operational Period	
		Date: 9/8/2020 to 9/9/2020	Time: 0600-0600
Operations Personnel			
Operations Chief	Brent Olson, Scott Schrenk Andy James (t) Shawn Borgen (t)	Branch Director	Justin Kaber 406-250-1455
Air Operations	Dennis Morton Dan Sepulveda	Division/Group Supervisor	Rocky Wagoner 406-531-9809
Safety Officer	Tony Petrilli, Todd Mott (t) Dan Cassidy		

Resources Assigned This Period							
Strike Team/Task Force/ Resource Designator	Req#	Last Shift	Leader	# Persons	Drop Off Point /Time	Pick Up Point / Time	
HC1 Dalton	C-53	9/11	Scott Gorman	19	Whitsett Base 0600	Whitsett Base 2100	
HC1 Cherokee	C-83	9/17	Josh Tester	20	Whitsett Base 0600	Whitsett Base 2100	
HC2IA Oak Valley		9/21	Rafela Torres	20	Whitsett Base 0600	Whitsett Base 2100	
WFM Whiskey Flat	O-574	9/18	Travis Clendenen	9	Whitsett Base 0600	Whitsett Base 2100	
TFLD	O-582	9/18	Robert Bundy	1	Whitsett Base 0600	Whitsett Base 2100	
ENG3 Kinsley	E-249	9/18	Kurt Edwards	1	Whitsett Base 0600	Whitsett Base 2100	
ENG6 Buffalo	E-132	9/13	Gregg Webster	3	Whitsett Base 0600	Whitsett Base 2100	
ENG6 R Construction	E-166	9/12	Richard Deroche	3	Whitsett Base 0600	Whitsett Base 2100	
DOZ2 Shannon Bros	E-45	9/14	John Shannon	1	Whitsett Base 0600	Whitsett Base 2100	
FALM Timbersmith	O-177	9/9	Ryan Deniz	2	Whitsett Base 0600	Whitsett Base 2100	
SOFR	O-389	9/16	James Gregory	1	Whitsett Base 0600	Whitsett Base 2100	
EMPF	O-295	9/14	Nick Stepanian	1	Whitsett Base 0600	Whitsett Base 2100	
REAF	O-524	9/19	Sarah Zaragoza	1	Whitsett Base 0600	Whitsett Base 2100	
REAF (t)	O-395	9/19	Ian Woodruff	1	Whitsett Base 0600	Whitsett Base 2100	

Work Assignments

Task: Scout Mountain Aire Creek to DP-6 and look to build containment line that ties into the 2017 Lion Fire scar. Utilize additional indirect containment opportunities areas and assess opportunities for containment line to limit fire spread to the south and west. Assess Jordan Peak Lookout and White Meadow Cabin for structure protection needs. Construct indirect containment line as needed extending from the Clicks Creek Trailhead northwest into the Summit Trail.

Purpose: To limit fire spread to the south and west and prevent impacts to surrounding communities.

End State: Impacts to local communities and infrastructure was kept to a minimum.

- Special Instructions**
- Personnel to notify DIVS of potentially sensitive cultural materials.
 - Castle Ambulance 1 staged at Whitsett Base Camp. Castle Ambulance 2 stage at R Ranch Spike. Castle REMS available to all DIVS.
 - Prioritization of all control or containment actions taken during the operational period in this Division will be at the discretion of the DIVS. Actions may have to be taken by the DIVS that are not enumerated in today's IAP. These actions would be a result of a significant change in actual or expected fire behavior over and above that anticipated at the time the IAP was prepared. These actions will be coordinated with and approved by the OSC whenever possible.

Division/Group Communication Summary									
Function	Channel	Frequency RX	Frequency TX	TONE RX	TONE TX	Function	Channel	Frequency RX	Frequency TX
COMMAND	1	170.0000	166.6750	151.4	151.4	A/G TAC	13	172.3500	172.3500
NIFC T3	6	168.6000	168.6000	151.4	151.4	A/G CMD	14	169.1500	169.1500
Prepared by Anya Moline – RESL	Approved By Robin Jermyn - PSC			Date 9/7/2020			Time 1800		

DIVISION ASSIGNMENT LIST			Branch			Division/Group			
Incident Name			I			YANKEE / ZULU			
SEQUIOA COMPLEX			Operational Period						
			Date: 9/8/2020 to 9/9/2020			Time: 0600-0600			
Operations Personnel									
Operations Chief	Brent Olson, Scott Schrenk Andy James (t) Shawn Borgen (t)			Branch Director			Justin Kaber 406-250-1455		
Air Operations	Dennis Morton Dan Sepulveda			Division/Group Supervisor			Stryker Clark / Jerry Olson (t) 406-546-7405		
Safety Officer	Tony Petrilli Dan Cassidy								
Resources Assigned This Period									
Strike Team/Task Force/ Resource Designator	Req#	Last Shift	Leader	# Persons	Drop Off Point /Time	Pick Up Point / Time			
HC1 Los Padres	C-56	9/13	Matt Aoki	19	Whitsett Base 0600	Whitsett Base 2100			
HC1 Bear Divide	C-66	9/13	Josh Thomas	19	Whitsett Base 0600	Whitsett Base 2100			
WFM Groveland	O-186	9/9	Timothy Markin	8	Whitsett Base 0600	Whitsett Base 2100			
TFLD	C-83.20	9/19	Phil Reid	1	Whitsett Base 0600	Whitsett Base 2100			
TFLD (t)	C-83.3	9/19	Mason Vance	1	Whitsett Base 0600	Whitsett Base 2100			
ENG3 A1Fire E13	E-79	9/12	Wyatt Lawrence	2	Whitsett Base 0600	Whitsett Base 2100			
ENG4 Troy	E-134	9/12	Dan Hokanson	3	Whitsett Base 0600	Whitsett Base 2100			
ENG6 Flame Chaser	E-133	9/14	Duane Many Hides	3	Whitsett Base 0600	Whitsett Base 2100			
WTT2 Valley Farms	E-88	9/8	Jeff Bates	1	Whitsett Base 0600	Whitsett Base 2100			
WTT2 Central 25	E-146	9/13	Jeff Nevins	2	Whitsett Base 0600	Whitsett Base 2100			
SKG2 Alvord Fire	E-194	9/16	Bernard Saul	2	Whitsett Base 0600	Whitsett Base 2100			
DOZ2 Shannon Bros	E-44	9/14	Bill Shannon	1	Whitsett Base 0600	Whitsett Base 2100			
DOZ2 Conner	E-83	9/8	Tim Conner	1	Whitsett Base 0600	Whitsett Base 2100			
FALM Timbersmith	O-176	9/9	Keenan Smith	2	Whitsett Base 0600	Whitsett Base 2100			
SOFR (t)	O-270	9/14	Philip Bordelon	1	Whitsett Base 0600	Whitsett Base 2100			
EMTF	O-579	9/17	Patrick Garcia	1	Whitsett Base 0600	Whitsett Base 2100			
EMPF	O-827	9/20	Tom Zamora	1	Whitsett Base 0600	Whitsett Base 2100			
AMBU	E-170	9/13	Castle 3	2	Whitsett Base 0600	Whitsett Base 2100			
REAF	O-141	9/8	Marcos Rios	1	Whitsett Base 0600	Whitsett Base 2100			
REAF	O-229	9/12	Lanny Flaherty	1	Whitsett Base 0600	Whitsett Base 2100			
Work Assignments									
<p>Task: Secure the firing operations between DP-1 and DP-2 to prevent fire movement into Lloyd Meadows. Work with Division A and implement a coordinated suppression plan in and around the Freeman Grove. Continue mop up where appropriate. Monitor the southwest corner of the Division, focusing on the east side of the Kern River.</p> <p>Purpose: Limit fire spread toward values at risk on the west side of the fire.</p> <p>End State: Private property and infrastructure is protected, natural resource impacts are limited, and there are no accidents or injuries to firefighters or the public.</p>									
Special Instructions									
<ul style="list-style-type: none"> Personnel to notify DIVS of potentially sensitive cultural materials. Castle Ambulance 1 staged at Whitsett Base Camp. Castle Ambulance 2 stage at R Ranch Spike. Castle REMS available to all DIVS. Crews be prepared to spike. Prioritization of all control or containment actions taken during the operational period in this Division will be at the discretion of the DIVS. Actions may have to be taken by the DIVS that are not enumerated in today's IAP. These actions would be a result of a significant change in actual or expected fire behavior over and above that anticipated at the time the IAP was prepared. These actions will be coordinated with and approved by the OSC whenever possible. 									
Division/Group Communication Summary									
Function	Channel	Frequency RX	Frequency TX	TONE RX	TONE TX	Function	Channel	Frequency RX	Frequency TX
COMMAND	1	170.0000	166.6750	151.4	151.4	A/G TAC	13	172.3500	172.3500
NIFC T6	8	166.7750	166.7750	151.4	151.4	A/G CMD	14	169.1500	169.1500
Prepared by Anya Moline – RESL	Approved By Robin Jermyn – PSC			Date 9/7/2020			Time 1800		

DIVISION ASSIGNMENT LIST			Branch			Division/Group			
Incident Name			V			BLACK ROCK / BACKCOUNTRY			
SEQUIOA COMPLEX			Operational Period						
			Date: 9/8/2020 to 9/9/2020			Time: 0600-0600			
Operations Personnel									
Operations Chief	Brent Olson, Scott Schrenk Andy James (t) Shawn Borgen (t)			Branch Director			Ryan Butler 406-250-0375		
Air Operations	Dennis Morton Dan Sepulveda			Division/Group Supervisor			Geoff Farinholt 406-529-5671		
Safety Officer	Tony Petrilli, Todd Mott (t) Dan Cassidy								
Division/Group Supervisor									
Strike Team/Task Force/ Resource Designator	Req#	Last Shift	Leader	# Persons	Drop Off Point /Time	Pick Up Point / Time			
ENG3 SQF E-341	E-216	9/15	Merritt Cuttin	5	Troy Meadow 0600	Troy Meadow 2100			
ENG3 Gonzales	E-256	9/18	Steve Reason	3	Troy Meadow 0600	Troy Meadow 2100			
ENG5 Cate Land Fire	E-203	9/16	Vanessa Aldridge	3	Troy Meadow 0600	Troy Meadow 2100			
ENG6 Flame Chaser	E-198	9/20	Edwin Hall	3	Troy Meadow 0600	Troy Meadow 2100			
ENG6 White Horse	E-199	9/15	Jason McGaughy	3	Troy Meadow 0600	Troy Meadow 2100			
ENG6 Late Summers	E-200	9/12	Josh Crollard	3	Troy Meadow 0600	Troy Meadow 2100			
ENG6 Late Summers	E-201	9/12	Brad Beck Jr.	3	Troy Meadow 0600	Troy Meadow 2100			
CHIP	E-191	9/18	Andrew Rackley	2	Troy Meadow 0600	Troy Meadow 2100			
THSP	O-236	9/10	George Bowan	1	Troy Meadow 0600	Troy Meadow 2100			
EMPF	O-581	9/18	Joshua Terry	1	Troy Meadow 0600	Troy Meadow 2100			
EMPF	O-495	9/16	Scott Hamilton	1	Troy Meadow 0600	Troy Meadow 2100			
EMPF	O-551	9/16	Matthew Heckman	1	Troy Meadow 0600	Troy Meadow 2100			
EMPF	O-497	9/15	Tommy Kavanaugh	1	Troy Meadow 0600	Troy Meadow 2100			
AMBU	E-52	9/7	Castle 2	2	Troy Meadow 0600	Troy Meadow 2100			
Work Assignments									
<p>Task: Develop and implement structure protection plan for Black Rock, Bonita Meadow, West Meadow and back country/wilderness structures. Recon Manatchee area. Continue to assess and prep structures in Long Canyon and Casa Vieja.</p> <p>Purpose: Protect values at risk from wildfire impacts.</p> <p>End State: Values at risk and communities are able to operate in pre-fire condition. A plan to protect values at risk is Developed for the Manatchee area.</p>									
Special Instructions									
<ul style="list-style-type: none"> Personnel to notify DIVS of potentially sensitive cultural materials. Castle Ambulance 1 staged at Whitsett Base Camp. Castle Ambulance 2 stage at R Ranch Spike. Castle REMS available to all DIVS. Prioritization of all control or containment actions taken during the operational period in this Division will be at the discretion of the DIVS. Actions may have to be taken by the DIVS that are not enumerated in today's IAP. These actions would be a result of a significant change in actual or expected fire behavior over and above that anticipated at the time the IAP was prepared. These actions will be coordinated with and approved by the OSC whenever possible. 									
Division/Group Communication Summary									
Function	Channel	Frequency RX	Frequency TX	TONE RX	TONE TX	Function	Channel	Frequen cy RX	Frequency TX
COMMAND	2	170.6875	166.5750	151.4	151.4	A/G TAC	13	172.3500	172.3500
COMMAND	3	172.5500	162.1875	151.4	151.4	A/G CMD	14	169.1500	169.1500
R5 T5	10	167.1125	167.1125	151.4	151.4				
Prepared by	Approved By			Date			Time		
Anya Moline – RESL	Robin Jermyn - PSC			9/7/2020			1800		

End 2 T2 IA crews, 2 strike teams of T6 engines with 2 STENs, 1 TFLD, and 2 tenders.

DIVISION ASSIGNMENT LIST				Branch		Division/Group			
Incident Name				V		LIMA / X-RAY			
SEQUIOA COMPLEX				Operational Period					
				Date: 9/8/2020 to 9/9/2020			Time: 0600-0600		
Operations Personnel									
Operations Chief	Brent Olson, Scott Schrenk Andy James (t) Shawn Borgen (t)			Branch Director		Ryan Butler 406-250-0375			
Air Operations	Dennis Morton Dan Sepulveda			Division/Group Supervisor		Mike King / Graydon Galloway (t) 406-370-2121 / 208-596-5345			
Safety Officer	Tony Petrilli, Todd Mott (t) Dan Cassidy								
Resources Assigned This Period									
Strike Team/Task Force/ Resource Designator	Req#	Last Shift	Leader	# Persons	Drop Off Point /Time	Pick Up Point / Time			
HC1 Golden Eagles	C-55	9/14	Robert Villegas	19	Troy Meadow 0600	Troy Meadow 2100			
HC1 Crane Valley	C-73	9/16	Matt Dunlap	18	Troy Meadow 0600	Troy Meadow 2100			
WFM Horseshoe	O-1	9/20	Candice Kutrosky	13	Troy Meadow 0600	Troy Meadow 2100			
WFM Slate	O-4	9/21	Angel Reyes	10	Troy Meadow 0600	Troy Meadow 2100			
ENG5 Aberasturi	E-202	9/20	Russell Haynes	3	Troy Meadow 0600	Troy Meadow 2100			
ENG6 CNF E473	E-263	9/19	Allen Tennant	5	Troy Meadow 0600	Troy Meadow 2100			
SKD McKeller	E-214	9/17	Harley Toller	2	Troy Meadow 0600	Troy Meadow 2100			
DOZ2	E-140	9/11	David Krisher	2	Troy Meadow 0600	Troy Meadow 2100			
CHIP	E-189	9/17	Don Kelley	1	Troy Meadow 0600	Troy Meadow 2100			
EXCA	E-187	9/18	Kody Williams	1	Troy Meadow 0600	Troy Meadow 2100			
Inyo Pack String	E-56 E-57	9/14	Lee Roeser (O-142)	1	Troy Meadow 0600	Troy Meadow 2100			
FALM Under Dog	O-596	9/18	Gary Balmain	2	Troy Meadow 0600	Troy Meadow 2100			
SOF2	O-496	9/16	Tom Nash	1	Troy Meadow 0600	Troy Meadow 2100			
SOFR (t)	O-393	9/16	Jacob Broiller	1	Troy Meadow 0600	Troy Meadow 2100			
REMS2	E-217	9/19	Ray Storm	6	Troy Meadow 0600	Troy Meadow 2100			
EMPF	O-551	9/16	Matthew Heckman	1	Troy Meadow 0600	Troy Meadow 2100			
EMPF	O-91	9/15	Royce Copeman	1	Troy Meadow 0600	Troy Meadow 2100			
EMPF	O-342	9/15	Yoshimi Toyota	1	Troy Meadow 0600	Troy Meadow 2100			
REAF	O-252	9/11	Adam Toomey	1	Troy Meadow 0600	Troy Meadow 2100			
REAF	O-228	9/12	Michael McGraw	1	Troy Meadow 0600	Troy Meadow 2100			
REAF	O-231	9/11	Dan Swanson	1	Troy Meadow 0600	Troy Meadow 2100			
REAF	O-522	9/19	Donna Peppin	1	Troy Meadow 0600	Troy Meadow 2100			
Work Assignments									
Task: Continue direct and indirect fire line to the south towards Division X, improve indirect dozer lines, assist with point protection as needed. Continue to secure fires edge from Kern River to Lion Meadows Road.									
Purpose: Limit impact to values at risk on northern edge within wilderness, limit fire spread on eastern edge of fire.									
End State: Values at risk in wilderness are not impacted, spread of fire to east is limited in Divisions L and N									
Special Instructions									
<ul style="list-style-type: none"> Personnel to notify DIVS of potentially sensitive cultural materials. Castle Ambulance 1 staged at Whitsett Base Camp. Castle Ambulance 2 stage at R Ranch Spike. Castle REMS available to all DIVS. Prioritization of all control or containment actions taken during the operational period in this Division will be at the discretion of the DIVS. Actions may have to be taken by the DIVS that are not enumerated in today's IAP. These actions would be a result of a significant change in actual or expected fire behavior over and above that anticipated at the time the IAP was prepared. These actions will be coordinated with and approved by the OSC whenever possible. 									
Division/Group Communication Summary									
Function	Channel	Frequency RX	Frequency TX	TONE RX	TONE TX	Function	Channel	Frequency RX	Frequency TX
COMMAND	3	172.5500	162.1875	151.4	151.4	A/G TAC	13	172.3500	172.3500
NIFC T7	9	168.2500	168.2500	151.4	151.4	A/G CMD	14	169.1500	169.1500
Prepared by Anya Moline - RESL		Approved By Robin Jermyn - PSC				Date 9/7/2020		Time 1800	

10. TASK/ MISSION/ ASSIGNMENT (Type/ function includes: Air Tactical, Retardant, Recon, Personnel Transport, Bucket Operations, SAR, etc.)					
TYPE/FUNCTION	PRIORITY	NAME OF PERSONNEL OR CARGO (If applicable) or instructions for tactical aircraft	MISSION START	FLY FROM	FLY TO
ATGS		Provide continuous coverage over the fire as smoke and weather permits.	0900	PVT	Fire
Initial Attack		Initial Attack assistance as requested.	TBD	PVT/Peppermint	IA
Medevac		**See Medical Plan in IAP – Review during Division Breakouts**	TBD		Fire
Water Drops		As needed and approved by OPS, order through ATGS/HLCO	0900	PVT	Fire
Recon		Fire reconnaissance as requested.	0900	PVT	Fire
PSD		As needed and approved by OPS	0900	PVT	Fire
OTHER		(Back Haul, Re-Supply, Crew Movement) Place all orders through communications	0900	Peppermint	Fire

Helibase, Dip Sites, Pick Up Sites, etc.		Helibase, Dip Sites, Pick Up Sites, etc.	
Bridge Dip "B"	36 12.063' N, 118 27.445' W	H-12 Camp Nelson	36 08.368' N 118 36.917' W
Confluence Dip "B"	36 7.700' N, 118 26.316' W	H-20	36 10.960' N 118 29.259' W
Round Dip "B"	36 12.642' N, 118 28.000' W	H-21	36 12.650' N 118 30.230' W
Freeman "NR"	36 6.875' N, 118 27.551' W	C31	36 18.077' N 118 27.340' W
Beach Dip (X, U, N Only)	36 6.931' N, 118 17.824' W	C4	36 10.909' N 118 35.882' W
(MRB) Ranch Dip	35 58.494' N, 118 32.194' W	C11	36 0.630' N 118 23.448' W
H-1 T2	36 9.852' N, 118 26.985' W	DIV A Sling	36 10.948' N 118 29.360' W
H-2 T2	36 5.838' N, 118 26.806' W	Saddle Check	36 10.88' N 118 28.59' W
H-3 Black Rock T2	36 5.609' N, 118 15.666' W	Ridge Check	36 8.55' N 118 26.72' W
H-4 T2	36 6.128' N, 118 25.772' W	Needle Check	36 5.89' N 118 27.59' W
H-5 Piles Camp	36 08.278' N, 118 28.678' W	Lookout IP, Enter 10000'	36 3.89' N, 118 27.51' W
H-6	36 06.155' N, 118 24.808' W	Porterville HB	36 01.427' N 118 4.112' W
H-7	36 06.833' N, 118 24.373' W	Peppermint HB	36 4.355' N 118 32.500' W
H-8	36 06.762' N 118 22.767' W	C31	36 18.077' N 118 27.340' W

Visibility Limitations VFR Flight Helicopters Day 1/2 statute mile Clear of clouds

Flights above ground level	Flight Permitted in Winds Less than / Maximum Gust Spread		
	Type 1 Helicopters	Type 2 Helicopters	Type 3 Helicopters
More than 500' AGL	<50kts / Gusts: N/A	<50kts / Gusts: N/A	<50kts / Gusts: N/A
Less than 500' AGL	<40kts / Max Gust Spread: 15kts	<40kts / Max Gust Spread: 15kts	<30kts / Max Gust Spread: 15kts

"We don't think about problems we don't have ... We must think about problems we may not have at the moment but may emerge as side effects of our actions."

... The Logic of Failure

Approved by: /s/ *Dennis A. Morton*, AOBD

INCIDENT RADIO COMMUNICATIONS PLAN			Incident Name SEQUOIA COMPLEX			Date/Time Prepared 9/07/2020			Operational Period Date/Time 9/08/20 0600 9/09/20 0600		
Ch #	Function	Channel Name/Trunked Radio System Talkgroup	Assignment	RX Freq	N or W	RX Tone/NAC	TX Freq	N or W	Tx Tone/NAC	Mode A, D or M	Remarks
1	CMD REPEATER	NIFC C4	DIV A/B/Y/Z	170.0000		151.4	166.6750		151.4	A	JORDON PEAK
2	CMD REPEATER	NIFC C11	DIV X	170.6875		151.4	166.5750		151.4	A	SHERMAN PEAK
3	CMD REPEATER	NIFC C31	DIV L	172.5500		151.4	162.1875		151.4	A	COYOTE PEAK
4	FOREST REPEATER	SQF CH2	ALL/BACKUP	169.9000			165.7000		103.5	A	SQF FOREST RPTR DISPATCH
5	TACTICAL CHNL	NIFC T1	DIV A/NIGHT	168.0500		151.4	168.0500		151.4	A	SQF TACTICAL
6	TACTICAL CHNL	NIFC T3	DIV B	168.6000		151.4	168.6000		151.4	A	SQF TACTICAL
7	TACTICAL CHNL	NIFC T5	UNASSIGNED	166.7250		151.4	166.7250		151.4	A	SQF TACTICAL
8	TACTICAL CHNL	NIFC T6	DIV Y / Z	166.7750		151.4	166.7750		151.4	A	SQF TACTICAL
9	TACTICAL CHNL	NIFC T7	DIV L / X	168.2500		151.4	168.2500		151.4	A	SQF TACTICAL
10	TACTICAL CHNL	R5 T5	BLACK	167.1125		151.4	167.1125		151.4	A	SQF TACTICAL
11	TACTICAL CHNL	R5 T6	NELSON/LLOYD	168.2375		151.4	168.2375		151.4	A	STRUCTURE TAC
12	TACTICAL CHNL	VFIRE 25	POND	154.2875		156.7	154.2875		156.7	A	STRUCTURE TAC
13	AIR TO GROUND	A/G TAC	A/G TAC	172.3500			172.3500			A	A/G TAC
14	AIR TO GROUND	A/G CMD	A/G CMD	169.1500			169.1500			A	A/G CMD OVERHEAD ONLY
15	TACTICAL CHNL	CALCORD	MEDEVAC	156.0750		156.7	156.0750		156.7	A	CALCORD MEDEVAC
16	AIR GUARD	AIR GUARD	EMCY ONLY	168.6250			168.6250		110.9	A	AIR GUARD
Prepared by (Communications Unit) COMM UNIT 406.581.9816 / COM1 DUSTIN SENE 406.581.9816						Incident Location SEQUOIA NF County _____ State CA Latitude _____ N Longitude 3-7-77 W					

The convention calls for frequency lists to show four digits after the decimal place, followed by either an "N" or a "W", depending on whether the frequency is narrow or wide band. Mode refers to either "A" or "D" indicating analog or digital (e.g. Project 25) or "M" indicating mixed mode. All channels are shown as if programmed in a control station, mobile or portable radio. Repeater and base stations must be programmed with the Rx and Tx reversed.

MEDICAL PLAN (ICS 206 WF)

Controlled Unclassified Information//Basic

1. Incident/Project Name		2. Operational Period						
Sequoia Complex		Date/Time 09/08/20 0600hrs-09/09/20 0600hrs						
3. Ambulance Services								
Name	Complete Address	Phone & EMS Frequency	Advanced Life Support (ALS) Yes No					
Imperial Ambulance (west side)	28551 Hwy 190, Porterville, CA	559-687-3309	<input checked="" type="checkbox"/>	<input type="checkbox"/>				
Hall Ambulance (east side)	1001 21st St, Bakersfield	661-327-4111	<input checked="" type="checkbox"/>	<input type="checkbox"/>				
4. Air Ambulance Services								
Name	Phone	Type of Aircraft & Capability						
Kern County FD H408	657-464-7808	Incident Primary Air Rescue, Bell 205, ALS, 24/7 Hoist						
Skylife	800-305-5433	ALS, No Hoist, requires 100x100 LZ						
CHP H40 (Fresno)	559-262-0400	Air ambulance, ALS 24/7, DAY HOIST ONLY, NIGHT STAFFING ON CALL AFTER 1800 HRS						
US COAST GUARD	REGIONAL COMMAND CENTER 510-437-3701	AIR RESCUE, HOIST 24/7, NO IN-FLIGHT MEDICAL						
5. Hospitals								
Name Complete Address	GPS Datum – WGS 84 Coordinate Standard Degrees Decimal Minutes DD° MM.MMM' N - Lat DD° MM.MMM' W - Long		Travel Time Air Gnd		Phone	Helipad Yes No		Level of Care Facility
	Lat:	Long:	Min	Gnd		Yes	No	
Kern Valley Hospital 6412 Laurel Ave Lake Isabella, CA	35 38.07'N	118 24.35W	30	2-3Hr	760-379-2681	<input checked="" type="checkbox"/>	<input type="checkbox"/>	Emergency Room
	VHF:							
	Sierra View Med Ctr 465 W Putnam Ave Porterville, CA			30	2-4.5 hrs	559-784-1110	<input type="checkbox"/>	
VHF:								
Kaweah Delta Health 400 W. Mineral King Ave. Visalia, CA 93291	36 19.65'N	119 17.676'W	30	2.5-5 Hr	559-624-2000	<input checked="" type="checkbox"/>	<input type="checkbox"/>	Level 2 Trauma
VHF:	468.0375 PL141.3 DTMF 3211 12K lb pad limit							
Kern Medical Center 1700 MT Vernon Ave.Bakersfield, CA 93306	35 22.95'N	118 58.182'W	45	2.5-3.75 hr	661-326-2000	<input checked="" type="checkbox"/>	<input type="checkbox"/>	
VHF:	463.100 12K lb pad limit							
Community Regional Medical Center 2823 Fresno St.Fresno, CA 93721	36 44.568'N	119 47.094'W	1 hr	3-5.25 hr	559-459-6000 ER 559-459-4220	<input checked="" type="checkbox"/>	<input type="checkbox"/>	Level 1 Trauma/ Burn Center
VHF:	123.05 key 5times for lights 22K lb pad limit							
6. Division Branch Group		Area Location Capability						
Div A		EMS Responders & Capability:		REMS 1 (4 personnel)				
		Equipment Available on Scene:		ALS, extrication, utv				
		Medical Emergency Channel:		Command				
		ETA for Ambulance to Scene:						
		Air:		30 mins				
		Ground:		2 hrs				
		Approved Helispot:		H20				
		Lat:		36 10.960'N				
		Long:		118 29.259'W				

MEDICAL PLAN (ICS 206 WF)

Controlled Unclassified Information//Basic

1. Incident/Project Name	2. Operational Period
Div B	EMS Responders & Capability: Nick Stepanian, EMPF
	Equipment Available on Scene: ALS,
	Medical Emergency Channel: Command
	ETA for Ambulance to Scene:
	Air: 30 min
	Ground: 2 hrs
	Approved Helispot: H 20
	Lat: 36 10.960°N
	Long: 118 29.259°W
Div Y/Z	EMS Responders & Capability: Patrick Garcia, EMTF; Tom Zamora EMPF; Castle ambulance 3
	Equipment Available on Scene: ALS; ALS Ambulance
	Medical Emergency Channel: Command
	ETA for Ambulance to Scene:
	Air: 30 min
	Ground: 2 hrs
	Approved Helispot: H1
	Lat: 36 9.852°N
	Long: 118 26.985°W
Div L/X	EMS Responders & Capability: Silas Fischer EMPF; Royce Copeman EMPF; Yoshimi Toyota EMPF; REMS 2 (6 personnel)
	Equipment Available on Scene: ALS
	Medical Emergency Channel: Command
	ETA for Ambulance to Scene:
	Air: 35 mins
	Ground: Air only
	Approved Helispot: H2
	Lat: 36 5.838°N
	Long: 118 26.806°W
Blackrock Backcountry	EMS Responders & Capability: Matthew Heckman, EMPF; Scott Hamilton, EMPF; Joshua Terry, EMPF; Tommy Kavanaugh, EMPF; Castle Ambulance 2
	Equipment Available on Scene: ALS; ALS Ambulance
	Medical Emergency Channel: Command
	ETA for Ambulance to Scene:
	Air: 35 mins
	Ground: 3 hrs
	Approved Helispot: H 3
	Lat: 36 5.609°N
	Long: 118 15.666°W
Night Div	EMS Responders & Capability: Castle Ambulance 1; Steve DeVincenzi, EMTF
	Equipment Available on Scene: ALS Ambulance
	Medical Emergency Channel: Command
	ETA for Ambulance to Scene:
	Air: 35 mins
	Ground: 2 hr
	Approved Helispot: H 5
	Lat: 36 8.278°N
	Long: 118 28.678°W
Emily Ellick-Flettire-405-593-3369	09/07/2020 SOF2(t) Todd Mott 575-770-2359 9/7/20

MEDICAL PLAN (ICS 206 WF)
Controlled Unclassified Information//Basic
ASSIGNMENT-SPECIFIC MEDICAL EMERGENCY ACTION PLAN

Pre-Planning for today's assignment – See Page 2 IRPG

What are the likely hazards that could cause injuries? What kind of severe injuries?		
Who is the likely in-charge DIVS or overhead for an emergency in your assigned area today? (i.e. "Division Zulu")		
Who are the Medical personnel assigned to your part of the incident? What are their capabilities?		
Other Emergency Responders: fire dept, crash rescue, ambulance?		
Communications: Command channel, Air to Ground, Medical helicopters, local rescue/medical?		
Transportation methods available	Ground vehicle, drop point, coordinates, travel route?	
	Aircraft I.D, helispot names, coordinates? Hoist capable, internal transport	
	Other available methods - contingency	
Most likely workforce for evacuation		

Response checklist

Who takes charge?

- DIVS or designated Overhead manages the overall scene and evacuation process.
- Medical personnel and emergency responders manage patients and conduct rescues.
- OPS and IC make command decisions so the emergency can be given full attention and management. They continue to manage ongoing incident operations.

Response sequence:

- First, secure the scene and protect responders and patients from further injury.
- Clear the Command channel for "Emergency Traffic only" if this is a critical emergency. If not, inform Communications of non-critical-emergency status and use normal communications.
- Contact closest Medical personnel and DIVS or designated Overhead for response.
- Notify Communications to initiate Accident Action Plan response.

Information for Communications: (See Medical Incident Report, page 108, IRPG)

- Type and extent of injuries?
- Airway or breathing problems? Serious bleeding?
- Is an EMT present or needed? Are Paramedics (Advanced Life Support) needed?
- Specific location of patients (Lat/Long, access route, DP#, helicopter Landing Zone)?
- What type of transport is needed? Helicopter medevac, hoist, ambulance or ground transport?
- Name of contact person in charge of the scene.
- Do not use names of patients at any time.
- **Medical Emergency Responders confer with Medical Unit Leader and DIVS or designated Overhead to determine if this is a critical emergency and what type of transport is needed.**

Sequoia Complex COVID-19 reminder:

California remains an area of high prevalence of COVID-19 disease. You should remain aware of the recognized symptoms of COVID which include:

- Fever or chills
- Cough
- Shortness of breath or difficulty breathing
- Fatigue
- Muscle or body aches
- Headache
- New loss of taste or smell
- Sore throat
- Congestion or runny nose
- Nausea or vomiting
- Diarrhea

In order for you to remain free from COVID and continue fighting fire, you will need to be especially disciplined in the common mitigation practices.

Be aware, though, that 40-50% of persons infected with COVID are completely asymptomatic when spreading the virus to you. **You cannot rely on seeing that someone is sick or discovering that they had a positive test before you engage in distancing, mask wearing and other steps to protect yourself.**

The safe mitigation practices that have been developed for health and safety remain:

- **Maintain “Module as One”:** Avoid unnecessary face-to-face or close contact with persons outside your module
- **Social Distance:** Maintain a minimum of 6 feet spacing whenever possible. Avoid sharing food, utensils or personal items.
- **Mask:** Wear your mask, especially when unable to maintain distancing, even within your module.
- **Hand Hygiene:** Continue regular hand hygiene. Wash hands for 20-30 seconds with soap and water or hand sanitizer.
- **Disinfect and Clean Common Spaces:** Clean and disinfect all areas such as door handles (interior and exterior), dashboards, steering wheel, buttons/knobs and other shared touch surfaces.
- **Regular Monitoring and Self-Assessment:** Daily self-check using the standard symptom list. Maintain awareness of any change in your health. Immediately discuss with your supervisor should you exhibit symptoms.

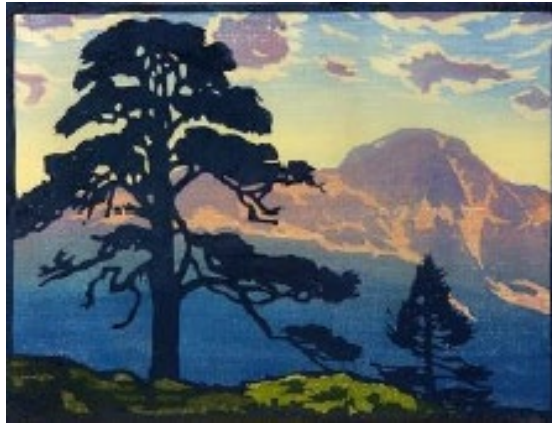
You should treat these mitigations as **habit** or part of **your routine**, so that you maintain your sharp focus and situational awareness on fireline and operational hazards during your duty hours.

Should a team member develop symptoms and exhibit distress, seek care immediately



HUMAN RESOURCE MESSAGE

There is zero tolerance for drugs and alcohol on this fire incident.



Yes, we have a new Human Resource Specialist on this fire!

Hello, my name is Debby Hassel and I am your HRSP on the Sequoia Complex.

My job is to be here to give you someone to talk to if you have any issues on the fire.

Please feel free to come and talk to me or give me a call/text/email and I will come to you.

Debby Hassel, *HRSP* (406) 274-7985

hrrspfire@gmail.com

REMOTE CHECK-IN

1. Scan the QR code on front of IAP to access the fillable check-in form. If you are unable to scan the code, please call Status/Check-in at **858-204-7419** for assistance.
2. Email qualification cards, manifests, contract, AD paperwork to:
2020.castle.finance@firenet.gov

Are You a TRAINEE?

1. Scan these codes to access the fillable *trainee* information forms. Send photo of qualification cards and task book cover to: **heather.e.grove@usda.gov** or **matthew.boss@usda.gov**



Registration



Check-out



Exit Interview

2. Call Incident Training Specialist 530-394-8076 (Heather) or 951-314-1427 (Matt) with questions from 0600 – 2100 daily.

DEMOBILIZATION IS NOW REMOTE!!

Demobilization Steps:

1. ALL accountable property checked-out from the incident must be returned (i.e. communications, supply). Items may be returned at ICP.
2. Submit all finance documentation (time must be projected for travel home).
 - a. Only 1 representative per resource should go to Finance at ICP.
 - b. Abide by scheduled DMOB time or call Finance for an unscheduled DMOB.
 - c. Government agency resources that would like to close out their time 100% remotely should call **949-591-4123** when they are close to their DMOB date and make necessary arrangements to complete the process.
3. Scan the QR code on the front of the IAP to complete the DMOB process and start your travel home. If you are unable to scan the code to complete travel information, please call Demobilization Unit Leader at **951-235-1568** for assistance.

FINANCE MESSAGE

OPTIONS FOR SUBMITTING TIME:

1. Fillable PDF CTR/Shift Ticket: The QR code to the fillable form is below. If you do not have QR capabilities, Finance can e-mail you the forms directly.



2. Hard Copy CTR/Shift Ticket: Fill out a hard copy CTR, snap a picture and email/text the photo to Finance. If you send in a picture, please make sure it is legible and includes the supervisor's signature at the bottom!
 3. OR you may turn in your actual hard copy as usual at Whitsett Spike Camp.
- Please try to submit time at least every other day.
 - H-Pay justifications are still required on your CTRs – "H = Hazard Pay" is not sufficient.

2020.castle.finance@firenet.gov

Agency Overhead/Crews/Engines: 949-591-4123

Contractors/Equipment: 949-591-4131

Comp/Claims: 949-330-9973

TIP:

*****In order to use fillable pdf forms, you must have some version of Adobe Acrobat downloaded on your device. If you have any issues opening the documents call Finance for assistance. *****

09/08/2020

TENTATIVE RELEASE

CASTLE US-CA-SQF-002541

EQUIPMENT

E-204	0700	(ENG6)	ENGINE - T6 - ROBERT DILLON
E-115	0730	(ES6)	ENGINE S/T - T6 - 5184F (CA-

OVERHEAD

O-123	0700	(EQTR)	GODOY, ALEJANDRA PENA
O-34	0715	(SEC2)	VILLEGAS JR, HUMBERTO
O-90	0730	(EMPF)	ABBRUZZESE, ROBERT
O-91	0745	(EMPF)	COPEMAN, ROYCE
O-92	0800	(EMPF)	SWENSON, BRYAN
O-106	0830	(DOCL)	RECHEL, JENNIFER
O-141	0845	(THSP)	RIOS RODRIGUEZ, MARCOS

RESOURCE MESSAGE

The Sequoia Complex, burning in the Western Divide Ranger District, is advancing toward the Freeman Creek Grove, which sits between the fire and the community of Ponderosa, and is the home of the Bush Tree.

Use of bulldozers to construct fire lines when building hand lines is no longer effective within the giant sequoia groves in the path of the Sequoia Complex is approved. This approval includes the zones of influences for the groves as well.

The use of bulldozers in groves MUST have the approval of the Incident Commander and the Agency Administrator.

I expect the following management requirements to be adhered to:

- A Resource Advisor will be on site during all fire line construction when heavy equipment is used and notified immediately when it is determined that felling any giant sequoia tree is necessary.
- The Giant Sequoia National Monument Plan (Monument Plan) limits cutting sequoias larger than 12" dbh except in clear cases of threats to human safety.
- Keep the dozer line at least 10 feet from the drip line of giant sequoia trees greater than 12" dbh in order to avoid damaging the root systems.
- There may come a point where avoiding the drip line may make the fire line ineffective. If possible build hand lines in these situations.
- Where there are areas of very dense giant sequoia trees that are impossible to avoid, whether building line by hand or dozer, giant sequoias may be felled with the approval of the Resource Advisor.
- Tree felling criteria (Monument Plan, pp. 81-82) have been evaluated. The following criterion is applicable for this project.
 - F4. Public Safety: If maintaining one or more standing trees on site would create a public safety hazard. Forest Service policy is to eliminate safety hazards from recreation sites, administrative sites, and the public transportation system of roads and trails, including trees or tree limbs identified as hazardous (FSM 2330.6a).
 - The trees to be felled have been identified as hazards because leaving them standing would create a safety hazard for firefighters; both as potential falling hazards and by reducing the effectiveness of constructed fire lines. No giant sequoias over 12" dbh would be cut without prior approval.

Don't Forget....

Reporting of Cultural Sites

- Do not use the radio. Looters listen to our frequencies and will note where you find things.
- Grab a GPS point, bump it up the chain of command or directly inform a READ.

Food on the Line Attract Wildlife Over Time.

- Keep food off the line as much as possible. It lures in wildlife, especially on indirect and contingency lines. Food attracts wildlife to humans and can cause future issues (i.e. bears looking for food in camps).

Sensitive Areas

- READs will be flagging sensitive areas during the incident.
- By default, please avoid going into these areas.
- The two flagging colors used are a strip of blue and a strip of red.
- For more information, please consult with a READ.

Keep Up the Good Work!

Continue to do good work for cultural and natural resources by doing the following:

- Picking up trash/micro-trash.
- Removing unused flagging.
- Sharing information and working alongside READs.
- When moving on to a new area, leaving the old area better than you found it.

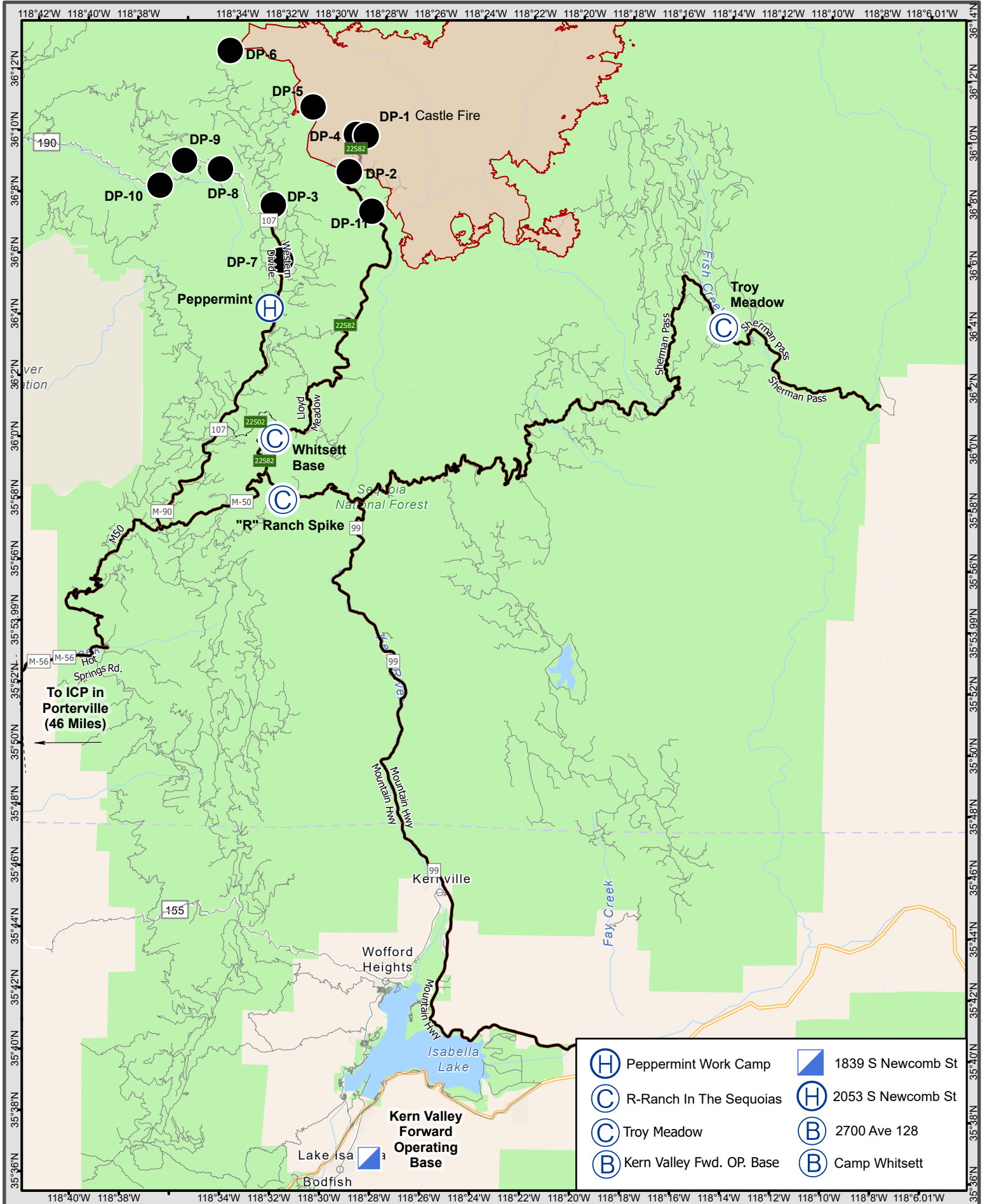


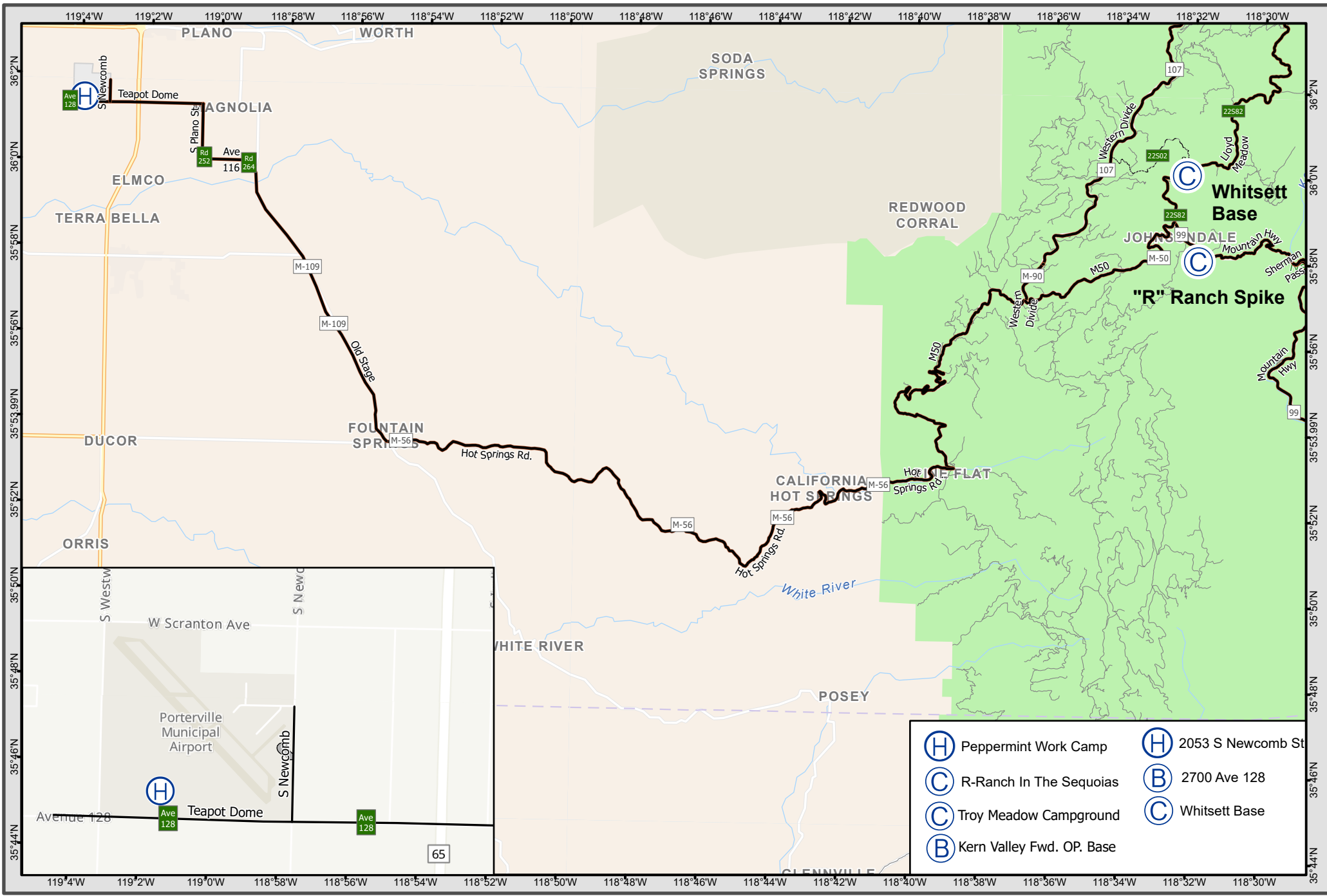
Northern Rockies Team 1

SEQUOIA COMPLEX

PHONE LIST

POSITION	NAME	MOBILE PHONE
SAFETY		
Safety Officer 1	Vicker Jr, Gerald W	443-614-4358
PUBLIC INFORMATION		
Public Information Officer 1	Smith, Jeannette M	406-544-0131
LIAISON		
Liaison Officer	Taylor, Robert L	406-554-4679
OPERATIONS		
Operations Section Chief 1	Olson, Brent H	406-249-4994
Line Ops	Schrenk, Scott	406-250-0354
Air Ops	Morton, Dennis	406-660-2318
PLANNING		
Planning Section Chief	Jermyn, Robin	406-360-5936
Planning Section Chief (t)	Carlin, Rob	406-249-1989
Deputy Planning Chief	Gump, Robert	850-688-7623
Status Check In	Heinsch, Faith Ann	858-204-7419
DEMOB	Murphy, Tanya	951-235-1568
Training Specialist	Boss, Matt	951-314-1427
Sequoia NF READ	Courter, Josh	559-920-7023
Inyo NF READ	Barnett, Adam	760-920-8104
LOGISTICS		
Logistics Section Chief 1	Showers, Charles	406-531-3691
Ordering Manager	Lind, Rita	406-291-3012
Supply Unit Leader	King, Josh	406-855-0984
Communications Unit Leader	Sene, Dustin	406-581-9816
COVID-19 Medical	Gaul, Roylene	406-381-6888
FINANCE		
Finance Section Chief 1	Schrenk, Amy	406-830-5214
For COMP/CLAIMS		949-330-9973
For Contractors		949-591-4131





TRANSPORTATION
Sequoia Complex
Sept 8, 2020



West Transportation Map Sequoia Complex CA-SQF-002622

⊙ Helibase



TRANSPORTATION
Sequoia Complex
Sept 8, 2020

- | | |
|---------------------------------|-------------------------|
| ⊙ (H) Peppermint Work Camp | ⊙ (H) 2053 S Newcomb St |
| ⊙ (C) R-Ranch In The Sequoias | ⊙ (B) 2700 Ave 128 |
| ⊙ (C) Troy Meadow Campground | ⊙ (C) Whitsett Base |
| ⊙ (B) Kern Valley Fwd. OP. Base | |

MEDICAL PLAN (ICS 206 WF)

Controlled Unclassified Information//Basic

Medical Incident Report

FOR A NON-EMERGENCY INCIDENT, WORK THROUGH CHAIN OF COMMAND TO REPORT AND TRANSPORT INJURED PERSONNEL AS NECESSARY.

FOR A MEDICAL EMERGENCY: IDENTIFY ON SCENE INCIDENT COMMANDER BY NAME AND POSITION AND ANNOUNCE "MEDICAL EMERGENCY" TO INITIATE RESPONSE FROM IMT COMMUNICATIONS/DISPATCH.

Use the following items to communicate situation to communications/dispatch.

1. CONTACT COMMUNICATIONS / DISPATCH (Verify correct frequency prior to starting report)

Ex: "Communications, Div. Alpha. Stand-by for Emergency Traffic."

2. INCIDENT STATUS: Provide incident summary (including number of patients) and command structure.

Ex: "Communications, I have a Red priority patient, unconscious, struck by a falling tree. Requesting air ambulance to Forest Road 1 at (Lat./Long.) This will be the Trout Meadow Medical, IC is TFLD Jones. EMT Smith is providing medical care."

Severity of Emergency / Transport Priority	<input type="checkbox"/> RED / PRIORITY 1 Life or limb threatening injury or illness. Evacuation need is IMMEDIATE <i>Ex: Unconscious, difficulty breathing, bleeding severely, 2° – 3° burns more than 4 palm sizes, heat stroke, disoriented.</i> <input type="checkbox"/> YELLOW / PRIORITY 2 Serious Injury or illness. Evacuation may be DELAYED if necessary. <i>Ex: Significant trauma, unable to walk, 2° – 3° burns not more than 1-3 palm sizes.</i> <input type="checkbox"/> GREEN / PRIORITY 3 Minor Injury or illness. Non-Emergency transport <i>Ex: Sprains, strains, minor heat-related illness.</i>	
Nature of Injury or Illness & Mechanism of Injury		<i>Brief Summary of Injury or Illness (Ex: Unconscious, Struck by Falling Tree)</i>
Transport Request		<i>Air Ambulance / Short Haul/Hoist Ground Ambulance / Other</i>
Patient Location		<i>Descriptive Location & Lat. / Long. (WGS84)</i>
Incident Name		<i>Geographic Name + "Medical" (Ex: Trout Meadow Medical)</i>
On-Scene Incident Commander		<i>Name of on-scene IC of Incident within an Incident (Ex: TFLD Jones)</i>
Patient Care		<i>Name of Care Provider (Ex: EMT Smith)</i>

3. INITIAL PATIENT ASSESSMENT: Complete this section for each patient as applicable (start with the most severe patient)

Patient Assessment: See IRPG PAGE 106

Treatment:

4. TRANSPORT PLAN:

Evacuation Location (if different): (Descriptive Location (drop point, intersection, etc.) or Lat. / Long.) Patient's ETA to Evacuation Location:

Helispot / Extraction Site Size and Hazards:

5. ADDITIONAL RESOURCES / EQUIPMENT NEEDS:

Example: Paramedic/EMT, Crews, Immobilization Devices, AED, Oxygen, Trauma Bag, IV/Fluid(s), Splints, Rope rescue, Wheeled litter, HAZMAT, Extrication

6. COMMUNICATIONS: Identify State Air/Ground EMS Frequencies and Hospital Contacts as applicable

Function	Channel Name/Number	Receive (RX)	Tone/NAC *	Transmit (TX)	Tone/NAC *
COMMAND					
AIR-TO-GRND					
TACTICAL					

7. CONTINGENCY: Considerations: If primary options fail, what actions can be implemented in conjunction with primary evacuation method? Be thinking ahead.

8. ADDITIONAL INFORMATION: Updates/Changes, etc.

REMEMBER: Confirm ETA's of resources ordered. Act according to your level of training. Be Alert. Keep Calm. Think Clearly. Act Decisively.

