

# SEQUOIA COMPLEX

*Sequoia National Forest / Inyo National Forest /  
Sequoia and Kings Canyon National Parks*

## **OPERATIONAL PERIOD**

**Saturday September 12, 2020**

**Sunday September 13, 2020**

**0600 to 0600**

**CA-SQF-002541**

**P5NG2P (0513)**



### **Values**

#### **Firefighters and Public Safety**

#### **Communities**

Ponderosa, Camp Nelson, Pyles Boys Camp, Rogers Camp, Sequoia Crest, Cedar Slope, Alpine Village, Redwood Drive, Lloyd Meadows, Mountain Aire, Pierpoint, Coy Flat

#### **Infrastructure**

Osa, Beach, Casa Vieja and Beck Meadows, USGS Seismic Station, Blackrock RS, Quinn RS, Kern RS, Dispersed and developed campgrounds, trailheads and associated facilities

#### **Natural and Cultural Resource Values**

Freeman Giant Sequoia Grove, Little Kern Golden Trout Habitat, Mountain Yellow Legged Frog Habitat  
Sierra Nevada Bighorn Sheep Habitat, Monache Mountain, Monache Meadow, Pacific Fisher Habitat, and other archaeological and cultural sites

<b>INCIDENT OBJECTIVES</b>	1. Incident Name <b>SEQUOIA COMPLEX</b>	2. Date Prepared 9/11/2020	3. Time Prepared 1600
<b>4. Operational Period</b>			
September 12, 2020 0600 to September 13, 2020 0600			
<b>5. General Control Objectives for the Incident</b>			
<ul style="list-style-type: none"> <li>• Limit growth of the Castle Fire by establishing a holding line that is safe for firefighters and offers high probability of success to keep the fire: <ul style="list-style-type: none"> <li>○ North of Durr Wood Camp</li> <li>○ South of Sequoia Kings Canyon Wilderness Boundary</li> <li>○ East of Highway 190 and to Summit Trail</li> <li>○ West of Toowa Range to King Fisher Ridge to 22S05 Road</li> </ul> </li> <li>• Monitor the spread/growth of the Shotgun Fire using air operation assets.</li> <li>• Protect and minimize impacts to identified values at risk including the communities of Ponderosa, Camp Nelson, Pyles Boys Camp, Rogers Camp, Cedar Slope, Sequoia Crest, Alpine Village, Redwood Drive, Lloyd Meadows, Mountain Aire, Pierpoint, and Coy Flat, as well as infrastructure at Freeman Giant Sequoia Grove, Blackrock Ranger Station; Osa, Beach, Casa Vieja, and Beck Meadows; trailheads and facilities; Monache Mountain, Monache Meadow and other archaeological and cultural sites.</li> <li>• Coordinate with the Sequoia NF Duty Officer on support to any new initial attack.</li> </ul>			
<b>6. Management Objectives</b>			
<ul style="list-style-type: none"> <li>• Implement suppression actions that have a high potential for success, carefully weighing risk exposure to firefighters.</li> <li>• Provide for the safety of firefighters, aviation and public through clear communication. Ensure an understanding of strategies and tactics, including a clearly defined and obtainable end state, in order to facilitate sound risk mitigation decision making.</li> <li>• Implement social distancing and adhere to the “module of one” concept to reduce physical exposure and transmission of COVID-19, to provide for the health and safety of all incident personnel.</li> <li>• Minimize to the extent feasible smoke exposure to firefighters, communities and other affected areas to reduce susceptibility to the consequences from COVID-19 exposure.</li> <li>• Maintain and strengthen relationships with partner agencies, stakeholders, cooperators, community leaders, and local agencies utilizing most effective platforms available.</li> <li>• Minimize adverse effects from suppression actions on riparian areas, wetlands, Little Kern Golden Trout, Mountain Yellow Legged Frog, and Pacific Fisher habitats.</li> <li>• Minimize impacts to Wilderness areas; use minimum impact suppression tactics (MIST) by utilizing trails, streams, ridges and natural barriers when possible for control lines.</li> </ul>			
<b>7. Commander’s Intent</b>			
<ul style="list-style-type: none"> <li>• <b>Safety:</b> Address fire fighter, public, and aviation safety through hazard/exposure mitigation.</li> <li>• <b>Communication:</b> We will keep the Agency Administrators informed of significant accomplishments and issues.</li> <li>• <b>Risk Management:</b> We will use a robust risk assessment process to mitigate unnecessary risk to fire fighters and update and/or revise decisions as necessary.</li> <li>• <b>Human Resources:</b> We will ensure that all incident personnel be treated with dignity and respect. We have a zero tolerance for harassment, alcohol, or illegal drug use.</li> <li>• <b>Operations:</b> We will make informed tactical decisions engaging the fire in the right locations with the appropriate resources.</li> <li>• <b>Public Information:</b> We will provide timely and accurate information through the press, meetings, trap lines, briefings, and social media.</li> <li>• <b>Stakeholders:</b> We will coordinate with the delegating agencies to identify key partners and keep them effectively informed of progress and to use their local knowledge.</li> <li>• <b>Finance:</b> We will establish and monitor cost effective methods for accomplishing incident objectives.</li> </ul>			
<b>8. ATTACHMENTS (X IF ATTACHED)</b>			
<input checked="" type="checkbox"/> Organization List - ICS 203	<input checked="" type="checkbox"/> Medical Plan - ICS 206	<input type="checkbox"/> _____	
<input checked="" type="checkbox"/> Division Assignment Lists - ICS 204	<input checked="" type="checkbox"/> Unit Log 214	<input type="checkbox"/> _____	
	<input checked="" type="checkbox"/> WF206 8 Line	<input type="checkbox"/> _____	
<b>9. Prepared By (Planning Section Chief)</b>		<b>10. Approved By (Incident Commander)</b>	
Rob Carlin PSC1 (t)		Michael Goicoechea IC	
ICS 202		NFES 1326	

ORGANIZATION ASSIGNMENT LIST				Operations Section	
1. Incident Name		Sequoia Complex		Field Operations	Scott Schrenk / Andy James (t)
2. Date Prepared	9/11/2020	3. Time Prepared	1700	Planning Operations	Brent Olson 406.249.4994 / Shawn Borgen (t)
4. Operational Period				Branch I Director	Justin Kaber
September 12, 2020 to September 13, 2020				Branch V Director	Ryan Butler
0600 to 0600				Structure Branch	Drew Daily
Incident Commander and Staff				Branch I	
Incident Commander	Mike Goicoechea			Alpha	Kate Airhart
Deputy	Mark Goeller / Greg Poncin			Bravo	Rocky Wagoner
Safety Officer	Dan Cassidy / Todd Mott (t)			Swing	Jon Norman
Information Officer	Jeannette Smith 406.544.0131			Yankee / Zulu	Stryker Clark / Jerry Olson (t)
Liaison Officer	Rob Taylor 406.544.4679			Branch V	
Agency Representative				Black Rock / Backcountry	Geoff Farinholt / Richard Baker (t)
SQF AA	Constance Cummins / Ann Niesen (t)			Lima / X-Ray	Mike King / Graydon Galloway (t)
SQF and INFAR	Phillip DeSenze			Structure	
SQF READ	Adam Barnett 760.920.8104			Lloyd	Bryan Duffy
INF AA	John (Pancho) Smith			Nelson	Hunter Seaborn Bell, III
INF READ	Adam Barnett 760.920.8104			Ponderosa	Tom McLeod (t)
SEKI AA	Lee Taylor			Night	
SQF Chief 1	Angie Sanchez-Hand			Night	John Lange (t)
Sequoia & Kings NPS	Mike Theune				
Tulare Co FD	Jeff McLaughlin			Air Operations Branch	
Tulare CO Sheriff	Lt. Bobby Rader 559.731.3754			Air Operations Branch Director	Dennis Morton 406.660.2318
SoCAL Edison	Troy Whitman			Air Support Group Supervisor	John McKee 406.370.7028 / Dan Sepulveda
CHP	Chad Patton			Air Tactical Group Supervisor	Tony Duprey / Ken Craw
Tribal Liaison	Dirk Charley 559.554.5433			Finance Section	
Tule River Tribe – FMO	Zane Santos 559.339.8686			Section Chief	Amy Schrenk 406.830.5214
Planning Section				Time Unit	Marta Lujan 970.275.3120
Section Chief	Robin Jermyn 406.360.5936 / Rob Carlin (t)			Equipment Time	Lynda Pike 406.382.0086
Deputy	Rob Gump 850.688.7623			Personnel Time	Tama Lester 580.212.1017
Situation Unit	Derek Trauntvein 307.431.8598 Lance Robinson 208.421.5969			Cost Unit	Khon Viengkham 703.217.7269
Demobilization Unit	Tanya Murphy 951.235.1568			Procurement Unit Leader	Dana Bangart 406.360.0029
Resources Unit Leader	Anya Moline 406.366.1979 / Anthony Watts (t)			Comps / Claims	Leon Augustine 406.363.8956 Shannon Maxwell (t) 406.366.3724
Status Check-in	Faith Ann Heinsch 858.204.7419			IBA	Nancy Gibson
Fire Behavior Analyst	Brian Anderson 406.660.0450 / David Greathouse			WHITSETT ORGANIZATION	
Long-Term Analyst	LaWen Hollingsworth 406.552.5440 / Alicia Reiner (t)			Deputy IC	Mark Goeller
GIS Specialist	Erin Heiselmann 406.546.4014 Nate Meyer 307.761.1541 / McIntyre Murphy (t)			Safety	Todd Mott (t)
Computer Specialist	Tim McCracken 303.859.7753 / John Vaisa (t)			Operations	Scott Schrenk / Andy James (t)
Meteorologist	Dan Byrd 240.778.4278			Plans	Rick Moore
Human Resource	Debby Hassel 406.274.7985			Logistics	Roylene Gaul
Training Specialist	Matt Boss (t) 951.314.1427			TROY MEADOWS ORGANIZATION	
Logistics Section				Branch	Ryan Butler
Section Chief	Charlie Showers 406.370.3787 Jim Evanoff 406.223.8660 / LeRoy Evans (t)			Base Camp Manager	Pat Beers 253.318.9792
Ordering Manager	Rita Lind 310.650.1222 or 423.534.9699 Kristin Troop (virtual)			CAMP NELSON ORGANIZATION	
Supply Unit	Josh King 406.855.0984 / Brent Elmore (t)			Division	Hunter Seaborn Bell, III
Facilities Unit	James Andruzzi 917.443.2556 / Matt LaTray			Base Camp Manager	Bill Fitch 631.978.8084 or 559.542.2511
Base Camp	Patrick Beers (t) 253.318.7992				
Ground Support Unit	Keith Windell 213.503.4243				
Communications Unit	Dustin Sene 406.581.9816				
Communications Tech	Trent Coppinger 406.581.9027				
Medical Unit	Emily Ellick-Flettre 405.593.3369 Brett Clymer			Prepared by:	Anya Moline - RESL

# Safety Message

## Promoting a Culture of Safety

Safety is the responsibility of everyone. Most presenters at the morning briefing include information about safety along with their daily objectives. Thus, the Incident Action Plan (IAP) becomes a bundle of many safety messages that when taken together, is a very powerful tool.

Incident managers are responsible for sharing information in the IAP with every firefighter. Use these safety messages as a tool to promote dialog about your actions and potential consequences throughout your assignment.

Three techniques for promoting a culture of safety:

- **Include Everyone** – Every member of your team must be included in safety discussions. Even the newest crew member has something to contribute.
- **Use Information** – A lot of people are visual learners. Include real work examples and visual aides to prompt discussion. Story telling is a powerful means to illustrate your key points about safety.
- **Keep it Relevant** – Understand the challenges associated with your daily work assignments. Make your safety message applicable to the work at hand.

Promoting a culture of safety means that with every action taken you recognized there is a safety component to be considered and discussed. Your challenge is to continually bring safety to the forefront of your mind and to your actions.

**Be Mindful About Safety in all Your Actions**

Dan Cassidy SOF1 NR Team 1



# FIRE WEATHER FORECAST



**FORECAST NO:** 19  
**PREDICTION FOR:** Sept 12-13, 2020 0600-0600

**INCIDENT NAME:** Sequoia Complex

**UNIT:** CA-SQF  
**SIGNED:** *Dan Byrd*

**TIME AND DATE**  
**FORECAST ISSUED:** Fri, Sep 11 @ 2000 hours

**Incident Meteorologist – Dan Byrd**

**WEATHER DISCUSSION:** Upper level ridging has strengthened over the area today and with east to southeast flow aloft, the smoke from other fires should remain to our west. With much less dense smoke aloft expect warmer temperatures and lower RH's this afternoon. With more instability expect a Haines of 6 this afternoon also. Strong high pressure ridging will continue for the next few days with mostly sunny skies once again on Sunday. Smoke may begin to shade the fire again on Monday and especially on Tuesday as the upper flow becomes more southwest to westerly.

**SKY/WEATHER TODAY (SATURDAY):** Mostly sunny, dry and less smoky. Expect the inversion to break by 1100-1200.

**MAX TEMPERATURES / MIN RELATIVE HUMIDITY:**

**5000 FT:** 84 to 90 degrees (Up 4-6) / 8 to 13 (Down 2-4%)  
**7000 FT:** 73 to 78 degrees (Up 4-6) / 11 to 16 (Down 2-4%)

**EYE LEVEL WINDS:**

**Slope/Valley:** Morning drainage winds will become southeast to southwest after 1100-1200 with speeds 6 to 8 gusts to 14 mph. Winds will continue to be heavily impacted by local terrain.

**Ridges:** Northwest 5 to 10 mph becoming southwest 4 to 8 G12 mph in the early afternoon.

**MIXING HEIGHT...**11,000 FT AGL **VENTILATION...** Excellent  
**TRANSPORT WIND...**Northwest around 5 mph in the morning, shifting to the southwest in the afternoon 5 to 10 mph.  
**CWR (0.10")...**0% **LAL...**1 **HAINES...**6

**SKY/WEATHER TONIGHT (SATURDAY NIGHT):** Mostly clear with heavy smoke in the Kern River Valley. North to northeast 2 to 4 mph. Squirrely winds could occur near the confluence of the Little Kern/Kern Rivers. Overnight RH recoveries will remain poor.

**MIN TEMPERATURES / MAX RELATIVE HUMIDITY**

**5000 FT:** 58 to 62 degrees (Up 2-3) / 25 to 30% (Down 5-8%)  
**7000 FT:** 54 to 58 degrees (Up 2-3) / 20 to 25% (Down 5-8%)

**EYE LEVEL WINDS:**

**Slope/Valley:** North to northeast 3 to 6 mph.

**Ridges:** Northeast 4-6 mph.

**CWR (0.10")...**0% **LAL...**1

**SUNDAY:** Inversion lifting by 1100-1200. Mostly sunny, not as smoky.

**Max Temps:** 75 to 91. **Min RH:** 10 to 20%. **Winds:** **Slope/Valley:** Morning drainage winds becoming south to southwest 5-10 G15 mph in the afternoon. **Ridge:** Northeast 4 to 8 mph becoming southeast to southwest 5 to 10 G14 mph in the afternoon.

**LAL:** 1 **CWR (0.10"):** 0% **MIXING HEIGHT:** 12,000 FT AGL **HAINES:** 5

**OUTLOOK for SUNDAY Through TUESDAY:**

**MONDAY:** Sunny. **High Temp:** 78-93. **Min RH:** 11. **Ridge Wind:** SW 8-12 G18 mph..

**TUESDAY:** Sunny. **High Temp:** 79-94. **Min RH:** 12. **Ridge Wind:** SW 8-12 G17 mph.

**WEDNESDAY:** Sunny. **High Temp:** 77-92. **Min RH:** 12. **Ridge Wind:** SW 6-10 G20 mph.

# FIRE BEHAVIOR FORECAST

<b>FORECAST NUMBER: 22</b>	<b>TYPE OF FIRE: Wildland</b>
<b>FIRE NAME: Sequoia Complex</b>	<b>OPERATIONAL PERIOD: 9/12/2020: 0600-0600</b>
<b>DATE ISSUED: September 11, 2020</b>	<b>TIME ISSUED: 1800</b>
<b>UNIT: CA-Sequoia National Forest</b>	<b>SIGNED: /s/ David Greathouse FBAN</b>

## WEATHER

**\*\*Clear Skies, Warm Temps and Increased Instability\*\***

(See Weather forecast for details)

**Weather thresholds for large fire growth: Temp: >83 deg, RH <20%, 20ft winds >7mph**

**Rule of Thumb – To figure 20' winds, divide the observed eye level winds by .4**

## FUELS

**Fuels-** The fuels that dominate the Castle fire are primarily mixed conifer with a heavy component of dead and down material. In the lower elevations and especially in the fire scars, a mix of shrub and grass/shrub can be found. Heavy pockets of beetle killed timber can also be found throughout the fire area. The fuels in the Shotgun fire are primarily grass and grass/shrub. The fuels are very dry for this time of year. The ERC's are currently near the 97<sup>th</sup>. The 100-hr and 1000-hr fuels are at 6% and 7%. These indices indicate that all dead fuel will contribute to fire intensity.

**Topography-** Topography in the fire area is dominated by the Kern River. This river drainage runs north/south and is steep and narrow, roughly bisecting the fire area down the middle. Terrain has played a central role in fire spread, taking the predominantly SW flow and directing it in every way imaginable across the fire area.

## FIRE BEHAVIOR

**Today's maximum fire potential**

**Timber**

	<b>0% Slope</b>	<b>30% Slope</b>	<b>60% Slope</b>
<b>Rate of Spread</b>	<b>6-8 ch/hr</b>	<b>10-12 ch/hr</b>	<b>19-21 ch/hr</b>
<b>Flame Lengths</b>	<b>4-5'</b>	<b>5-8'</b>	<b>8-10'</b>

**Brush**

	<b>0% Slope</b>	<b>30% Slope</b>	<b>60% Slope</b>
<b>Rate of Spread</b>	<b>3-5 ch/hr</b>	<b>5-7 ch/hr</b>	<b>10-12 ch/hr</b>
<b>Flame Lengths</b>	<b>3-4'</b>	<b>4-6'</b>	<b>6-8'</b>

**Rule of Thumb: Cut head fire flame lengths in half for flanking fire, backing fire 2'-4' flame lengths**

**All Divisions:** Today's clearer skies and instability will bring active fire behavior on all flanks. Expect moderate surface fire spread with some occasional torching. In slopes greater than 50%, you can expect head fire to transition into the crown for a short period. Downwind spotting is probable today up to ½ mile, the probability of ignition is 80%-100%. Burning conditions should increase between 1100-1200, peak around 1600-1700 and moderating after dark.

**Div - A/Y/Z** Expect the fire to continue to flank west further into the Freeman Creek Sequoia Grove today. Expected growth in the bowl will be ¼ to ½ mile. As it comes off Hermit rock to the west, expect the fire to back over the lip of the bowl toward the 50b road. Do not let the bottom of the fire outpace the top. This could lead to strong uphill crown fire runs along with long range spotting.

**Div B** - The predicted winds may challenge your lines today especially in the afternoon. Active surface fire in those areas not burned out can be expected. Be heads up for spot fires, they could quickly become established. Cooler, light west winds coming up from the San Joaquin valley should arrive in your area late afternoon, early evening. These winds should help moderate fire behavior.

**Div L** – Expect the uncontained edges on the E and NE side of the fire to continue to back east towards the upside down horseshoe on the 02 road, Watch the fire as it moves closer to the road, wind and terrain could align causing the fire to push north. The fire edge south of the finger to Lions Meadows could potentially make a run to the top of the ridge. This could cause spotting into the area of the 34 road and the Lions Meadow road junction. Lastly, the fire edge between the finger and Jordan Hot Springs may see some activity that hasn't been seen in days.

**Shotgun Fire** The fire is following mainly brush fuels with short uphill runs when established on the lower 1/3 of the slope. Spread is not likely to be significant due to the lack of surface fuels.

## AIR OPERATIONS

Smoke may impact air operations until the inversion lifts, between 1100-1200

## SAFETY

"The difference between being a victim and a survivor is often a low level of situational awareness"

-Barry Eisler

DIVISION ASSIGNMENT LIST				Branch		Division/Group			
Incident Name				I		ALPHA			
SEQUOIA COMPLEX				Operational Period					
				Date: 9/12/2020 to 9/13/2020			Time: 0600-0600		
Operations Personnel									
Operations Chief		Brent Olson, Scott Schrenk Andy James (t) Shawn Borgen (t)			Branch Director		Justin Kaber 406-250-1455		
Air Operations		Dennis Morton, John McKee Dan Sepulveda			Division/Group Supervisor		Kate Airhart 406-360-0506		
Safety Officer		Dan Cassidy, Todd Mott (t)							
Resources Assigned This Period									
Strike Team/Task Force/ Resource Designator		Req#	Last Shift	Leader		# Perso ns	Drop Off Point /Time		Pick Up Point / Time
HC1 Vista Grande		C-54	9/12	Jess Estrada		19	Whitsett Base 0600		Whitsett Base 2100
HC2 Patrick1		C-90	9/19	Joshua Chilest		20	Whitsett Base 0600		Whitsett Base 2100
WFM Sequoia		O-266	9/12	Aaron Woodyard		8	Whitsett Base 0600		Whitsett Base 2100
TFLD			9/22	Matt Chambers		1	Whitsett Base 0600		Whitsett Base 2100
TFLD (t)		O-336	9/14	Scott Turner		1	Whitsett Base 0600		Whitsett Base 2100
ENG6 High Desert		E-137	9/12	Thomas Hanks		3	Whitsett Base 0600		Whitsett Base 2100
ENG6 Red Dog		E-167	9/12	Tim England		2	Whitsett Base 0600		Whitsett Base 2100
WTT2 K&B		E-48	9/14	Mike Morgan		1	Whitsett Base 0600		Whitsett Base 2100
WTT2 CNF WT222		E-145	9/12	Andrew Peterson		2	Whitsett Base 0600		Whitsett Base 2100
DOZ2 Westlund		E-139	9/19	Alan Westlund		2	Whitsett Base 0600		Whitsett Base 2100
EXC2 Denis Equip		E-188	9/15	Anthony Pezzi		2	Whitsett Base 0600		Whitsett Base 2100
GRD2 Kirklang		E-97	9/17	Todd Adams		2	Whitsett Base 0600		Whitsett Base 2100
CHIP1 Siskiyou		E-184	9/16	Dennis Lange		2	Whitsett Base 0600		Whitsett Base 2100
CHIP1 Wyeas Forestry		E-192	9/16	Ryan Grigsby		2	Whitsett Base 0600		Whitsett Base 2100
SOFR (t)		O-171	9/12	Eric Klemowicz		1	Whitsett Base 0600		Whitsett Base 2100
REMS1		O-332	9/13	REMS		4	Whitsett Base 0600		Whitsett Base 2100
REAF (t)		O-398	9/17	Noah Hirsch		1	Whitsett Base 0600		Whitsett Base 2100
<b>Work Assignments</b>									
<p><b>Task:</b> Identify roads, ridges and natural barriers to be connected to form an indirect containment line west of the Freeman Grove. Do fuels prep on this indirect line to reduce the potential for spotting. Implement firing of this indirect line as directed by Branch 1. Coordinate suppression actions with Y/Z and B.</p> <p><b>Purpose:</b> Keep the fire spread east of the North Road and north of Ponderosa.</p> <p><b>End State:</b> Limit fire spread into additional values at risk to protect communities and infrastructure.</p>									
<b>Special Instructions</b>									
<ul style="list-style-type: none"> <li>Personnel to notify DIVS of potentially sensitive cultural materials.</li> <li>Castle Ambulance 3 staged at Whitsett Base Camp. Castle Ambulance 2 stage at Black Rock Ranger Station. Castle REMS1 available to all Branch I divisions.</li> <li>Prioritization of all control or containment actions taken during the operational period in this Division will be at the discretion of the DIVS. Actions may have to be taken by the DIVS that are not enumerated in today's IAP. These actions would be a result of a significant change in actual or expected fire behavior over and above that anticipated at the time the IAP was prepared. These actions will be coordinated with and approved by the OSC whenever possible.</li> </ul>									
<b>Division/Group Communication Summary</b>									
<b>Function</b>	Channel	Frequency RX	Frequency TX	TONE RX	TONE TX	<b>Function</b>	Channel	Frequency RX	Frequency TX
COMMAND	1	170.0000	166.6750	151.4	151.4	A/G TAC	13	172.3500	172.3500
NIFC T1	5	168.0500	168.0500	151.4	151.4	A/G CMD	14	169.1500	169.1500
Prepared by Anthony Watts – RESL(t)		Approved By Robin Jermyn - PSC				Date 9/11/2020		Time 1800	

DIVISION ASSIGNMENT LIST				Branch		Division/Group				
Incident Name				I		BRAVO				
SEQUOIA COMPLEX				Operational Period						
				Date: 9/12/2020 to 9/13/2020			Time: 0600-0600			
Operations Personnel										
Operations Chief		Brent Olson, Scott Schrenk Andy James (t) Shawn Borgen (t)			Branch Director			Justin Kaber 406-250-1455		
Air Operations		Dennis Morton, John McKee Dan Sepulveda			Division/Group Supervisor			Rocky Wagoner 406-531-9809		
Safety Officer		Dan Cassidy, Todd Mott (t)								
Resources Assigned This Period										
Strike Team/Task Force/ Resource Designator		Req#	Last Shift	Leader		# Pers ons	Drop Off Point /Time		Pick Up Point / Time	
WFM Whiskey Flat		O-574	9/18	Travis Clendenen		9	Whitsett Base 0600		Whitsett Base 2100	
TFLD		O-582	9/18	Robert Bundy		1	Whitsett Base 0600		Whitsett Base 2100	
ENG3 Kinsley		E-249	9/18	Kurt Edwards		1	Whitsett Base 0600		Whitsett Base 2100	
ENG6 Buffalo		E-132	9/13	Gregg Webster		3	Whitsett Base 0600		Whitsett Base 2100	
ENG6 R Construction		E-166	9/12	Richard Deroche		3	Whitsett Base 0600		Whitsett Base 2100	
ENG6 Allen E619		E-312	9/22	Peter Allen		3	Whitsett Base 0600		Whitsett Base 2100	
ENG6 Double D		E-313	9/22	Matthew Dimas		3	Whitsett Base 0600		Whitsett Base 2100	
DOZ2 Shannon Bros		E-45	9/14	John Shannon		1	Whitsett Base 0600		Whitsett Base 2100	
FMOD Timbersmith		O-177	9/16	Ryan Deniz		2	Whitsett Base 0600		Whitsett Base 2100	
SOFR		O-389	9/16	James Gregory		1	Whitsett Base 0600		Whitsett Base 2100	
EMPF		O-863	9/22	Chris Inman		1	Whitsett Base 0600		Whitsett Base 2100	
EMPF		O-864	9/24	Chris Laponis		1	Whitsett Base 0600		Whitsett Base 2100	
ARCH		O-524	9/19	Sarah Zaragoza		1	Whitsett Base 0600		Whitsett Base 2100	
Work Assignments										
<p><b>Task:</b> Continue to hold the fires edge in Mountaineer Creek to DP-6. Assess Jordan Peak Lookout and White Meadow Cabin for structure protection needs. Continue burning the prepped indirect line from the Clicks Creek area to the North Road, and then north toward DP-6 or as directed by Branch 1. Coordinate with division A and Y/ Z to ensure an integrated strategy.</p> <p><b>Purpose:</b> To limit fire spread to the south and west and prevent impacts to surrounding communities.</p> <p><b>End State:</b> Impacts to local communities and infrastructure was kept to a minimum.</p>										
Special Instructions										
<ul style="list-style-type: none"> <li>Personnel to notify DIVS of potentially sensitive cultural materials.</li> <li>Castle Ambulance 3 staged at Whitsett Base Camp. Castle Ambulance 2 stage at Blackrock Ranger Station. Castle REMS1 available to all Branch I divisions.</li> <li>Prioritization of all control or containment actions taken during the operational period in this Division will be at the discretion of the DIVS. Actions may have to be taken by the DIVS that are not enumerated in today's IAP. These actions would be a result of a significant change in actual or expected fire behavior over and above that anticipated at the time the IAP was prepared. These actions will be coordinated with and approved by the OSC whenever possible.</li> </ul>										
Division/Group Communication Summary										
Function	Channel	Frequency RX	Frequency TX	TONE RX	TONE TX	Function	Channel	Frequency RX	Frequency TX	
COMMAND	1	170.0000	166.6750	151.4	151.4	A/G TAC	13	172.3500	172.3500	
NIFC T3	6	168.6000	168.6000	151.4	151.4	A/G CMD	14	169.1500	169.1500	
Prepared by Anthony Watts – RESL(t)		Approved By Robin Jermyn - PSC					Date 9/11/2020		Time 1800	





DIVISION ASSIGNMENT LIST			Branch			Division/Group			
Incident Name			I			YANKEE / ZULU			
SEQUOIA COMPLEX			Operational Period						
			Date: 9/12/2020 to 9/13/2020			Time: 0600-0600			
Operations Personnel									
Operations Chief		Brent Olson, Scott Schrenk Andy James (t) Shawn Borgen (t)			Branch Director		Justin Kaber 406-250-1455		
Air Operations		Dennis Morton, John McKee Dan Sepulveda			Division/Group Supervisor		Stryker Clark / Jerry Olson (t) 406-546-7405		
Safety Officer		Dan Cassidy, Todd Mott (t)							
Resources Assigned This Period									
Strike Team/Task Force/ Resource Designator	Req#	Last Shift	Leader	# Persons	Drop Off Point /Time	Pick Up Point / Time			
HC1 Bear Divide	C-66	9/13	Josh Thomas	19	Whitsett Base 0600	Whitsett Base 2100			
HC2 Fery	C-92	9/20	Ryan Hoffman-Wentling	20	Whitsett Base 0600	Whitsett Base 2100			
TFLD	C-83.20	9/19	Phil Reid	1	Whitsett Base 0600	Whitsett Base 2100			
TFLD	O-259	9/23	Isaac Solomon	1	Whitsett Base 0600	Whitsett Base 2100			
TFLD (t)	C-83.3	9/19	Mason Vance	1	Whitsett Base 0600	Whitsett Base 2100			
HEQB		9/14	Rodney Helzer	1	Whitsett Base 0600	Whitsett Base 2100			
HEQB (t)		9/14	Mike Nott	1	Whitsett Base 0600	Whitsett Base 2100			
ENG3 A1Fire E13	E-79	9/12	Wyatt Lawrence	2	Whitsett Base 0600	Whitsett Base 2100			
ENG4 Troy	E-134	9/19	Dan Hokanson	3	Whitsett Base 0600	Whitsett Base 2100			
ENG6 Flame Chaser	E-133	9/14	Duane Many Hides	3	Whitsett Base 0600	Whitsett Base 2100			
WTT2 Dustbusters	E-49	9/25	Nathan Stutz	2	Whitsett Base 0600	Whitsett Base 2100			
WTT2 Valley Farm	E-88	9/23	Adam Thiessen	1	Whitsett Base 0600	Whitsett Base 2100			
WTT2 Central 25	E-146	9/13	Jeff Nevins	2	Whitsett Base 0600	Whitsett Base 2100			
CHIP McKellar	E-190	9/16	Bret Strong	2	Whitsett Base 0600	Whitsett Base 2100			
SKG2 Alvord Fire	E-180	9/23	Justin Davis	1	Whitsett Base 0600	Whitsett Base 2100			
SKG2 Alvord Fire	E-194	9/16	Bernard Saul	2	Whitsett Base 0600	Whitsett Base 2100			
DOZ2 Shannon Bros	E-44	9/14	Bill Shannon	1	Whitsett Base 0600	Whitsett Base 2100			
DOZ2 Connor	E-83	9/23	Tim Connor	1	Whitsett Base 0600	Whitsett Base 2100			
EXC2 Sandborg	E-179	9/13	Chuck Sandborg	2	Whitsett Base 0600	Whitsett Base 2100			
MAST Shannon Bros	E-186	9/13	Chuck Sandborg	1	Whitsett Base 0600	Whitsett Base 2100			
FMOD Swedberg Const.	O-599	9/22	Wade Giguere	2	Whitsett Base 0600	Whitsett Base 2100			
SOFR (t)	O-234	9/12	Dwayne Johnson	1	Whitsett Base 0600	Whitsett Base 2100			
EMPF	O-233	9/17	Silas Fischer	1	Whitsett Base 0600	Whitsett Base 2100			
EMPF	O-827	9/20	Tom Zamora	1	Whitsett Base 0600	Whitsett Base 2100			
EMTF	O-579	9/17	Patrick Garcia	1	Whitsett Base 0600	Whitsett Base 2100			
AMBU	E-170	9/13	Castle 3	2	Whitsett Base 0600	Whitsett Base 2100			
REAF	O-229	9/19	Lanny Flaherty	1	Whitsett Base 0600	Whitsett Base 2100			
REAF	O-277	9/19	Scott Dailey	1	Whitsett Base 0600	Whitsett Base 2100			
REAF(t)	O-395	9/17	Ian Woodruff	1	Whitsett Base 0600	Whitsett Base 2100			
Work Assignments									
<p><b>Task:</b> Continue to secure the perimeter on the east side of the 82 Road to prevent fire from progressing south towards Pyles Camp. Monitor fire behavior in the Freeman Grove while looking for indirect containment opportunities to the west. Monitor and manage fire effects to the extent possible in the Freeman Grove. Continue to construct and prep the indirect containment line from the Needles Lookout Road south toward the Ponderosa and east toward the 82 road. Monitor the southwest corner of the division, focusing on the east side of the Kern River.</p> <p><b>Purpose:</b> Limit fire spread toward values at risk on the west side of the fire.</p> <p><b>End State:</b> Private property and infrastructure is protected, natural resource impacts are limited, and there are no accidents or injuries to firefighters or the public.</p>									
Special Instructions									
<ul style="list-style-type: none"> <li>Personnel to notify DIVS of potentially sensitive cultural materials.</li> <li>Castle Ambulance 3 staged at Whitsett Base Camp. Castle Ambulance 2 stage at Blackrock Ranger Station. Castle REMS1 available to all Branch I divisions.</li> <li>Crews be prepared to spike.</li> <li>Prioritization of all control or containment actions taken during the operational period in this Division will be at the discretion of the DIVS. Actions may have to be taken by the DIVS that are not enumerated in today's IAP. These actions would be a result of a significant change in actual or expected fire behavior over and above that anticipated at the time the IAP was prepared. These actions will be coordinated with and approved by the OSC whenever possible.</li> </ul>									
Division/Group Communication Summary									
Function	Channel	Frequency RX	Frequency TX	TONE RX	TONE TX	Function	Channel	Frequency RX	Frequency TX
COMMAND	1	170.0000	166.6750	151.4	151.4	A/G TAC	13	172.3500	172.3500
NIFC T6	8	166.7750	166.7750	151.4	151.4	A/G CMD	14	169.1500	169.1500
Prepared by Anthony Watts – RESL(t)		Approved By Robin Jermyn – PSC				Date 9/11/2020		Time 1800	

DIVISION ASSIGNMENT LIST				Branch		Division/Group				
Incident Name				<b>V</b>		<b>BLACKROCK / BACKCOUNTRY</b>				
<b>SEQUOIA COMPLEX</b>				Operational Period						
				Date: 9/12/2020 to 9/13/2020			Time: 0600-0600			
Operations Personnel										
Operations Chief		Brent Olson, Scott Schrenk Andy James (t) Shawn Borgen (t)			Branch Director		Ryan Butler 406-250-0375			
Air Operations		Dennis Morton, John McKee Dan Sepulveda			Division/Group Supervisor		Geoff Farinholt / Richard Baker (t) 406-529-5671			
Safety Officer		Dan Cassidy, Todd Mott (t)								
Division/Group Supervisor										
Strike Team/Task Force/ Resource Designator		Req#	Last Shift	Leader	#	Drop Off Point /Time	Pick Up Point / Time			
WFM Slate		O-4	9/21	Angel Reyes	10	Troy Meadow 0600	Troy Meadow 2100			
ENG3 SQF E-341		E-216	9/15	Merritt Cuttin	5	Troy Meadow 0600	Troy Meadow 2100			
ENG3 Gonzales		E-256	9/18	Steve Reason	3	Troy Meadow 0600	Troy Meadow 2100			
ENG5 Cate Land Fire		E-203	9/16	Vanessa Aldridge	3	Troy Meadow 0600	Troy Meadow 2100			
ENG6 Flame Chaser		E-198	9/20	Edwin Hall	3	Troy Meadow 0600	Troy Meadow 2100			
ENG6 White Horse		E-199	9/15	Jason McGaughy	3	Troy Meadow 0600	Troy Meadow 2100			
ENG6 Late Summers		E-200	9/12	Josh Crollard	3	Troy Meadow 0600	Troy Meadow 2100			
ENG6 Late Summers		E-201	9/12	Brad Beck Jr.	3	Troy Meadow 0600	Troy Meadow 2100			
ENG6 R&R Fire		E-205	9/23	Mike Cox	3	Troy Meadow 0600	Troy Meadow 2100			
CHIP		E-191	9/18	Andrew Rackley	2	Troy Meadow 0600	Troy Meadow 2100			
Inyo Packers		E-56 E-57	9/14	Lee Roesser (O-142)	4	Troy Meadow 0600	Troy Meadow 2100			
THSP		O-236	9/10	George Bowan	1	Troy Meadow 0600	Troy Meadow 2100			
EMPF		O-495	9/16	Scott Hamilton	1	Troy Meadow 0600	Troy Meadow 2100			
EMPF		O-581	9/17	Joshua Terry	1	Troy Meadow 0600	Troy Meadow 2100			
AMBU		E-52	9/21	Castle 2	2	Troy Meadow 0600	Troy Meadow 2100			
<b>Work Assignments</b>										
<p><b>Task:</b> Maintain readiness and structure protection in: Bonita Meadow, West Meadow, Beach Meadow and Blackrock Work Center. Recon and develop a structure protection plan for Monache. Continue to assess and prep structures in the Golden Trout Wilderness. Improve the Powell road to facilitate ingress/egress to and from the Monache area.</p> <p><b>Purpose:</b> Protect values at risk from wildfire impacts.</p> <p><b>End State:</b> Values at risk are not impacted by fire. A plan to protect values at risk is developed for the Monache area.</p>										
<b>Special Instructions</b>										
<ul style="list-style-type: none"> <li>• <b>A/G Tac for Branch Five: RX169.200, TX 169.200. This needs to be hand programmed.</b></li> <li>• Personnel to notify DIVS of potentially sensitive cultural materials.</li> <li>• Castle Ambulance 3 staged at Whitsett Base Camp. Castle Ambulance 2 staged at the Blackrock Ranger Station. Castle REMS 2 available to all branch divisions.</li> <li>• Prioritization of all control or containment actions taken during the operational period in this Division will be at the discretion of the DIVS. Actions may have to be taken by the DIVS that are not enumerated in today's IAP. These actions would be a result of a significant change in actual or expected fire behavior over and above that anticipated at the time the IAP was prepared. These actions will be coordinated with and approved by the OSC whenever possible.</li> </ul>										
<b>Division/Group Communication Summary</b>										
<b>Function</b>	Channel	Frequency RX	Frequency TX	TONE RX	TONE TX	<b>Function</b>	Channel	Frequency RX	Frequency TX	
COMMAND	2	170.6875	166.5750	151.4	151.4	A/G TAC	Must self program	169.2000	169.2000	
COMMAND	3	172.5500	162.1875	151.4	151.4	A/G CMD	14	169.1500	169.1500	
R5 T5	10	167.1125	167.1125	151.4	151.4					
Prepared by Anthony Watts – RESL(t)		Approved By Robin Jermyn - PSC				Date 9/11/2020			Time 1800	

DIVISION ASSIGNMENT LIST		Branch	Division/Group
Incident Name		V	LIMA / X-RAY
SEQUOIA COMPLEX		Operational Period	
		Date: 9/12/2020 to 9/13/2020	Time: 0600-0600
Operations Personnel			
Operations Chief	Brent Olson, Scott Schrenk Andy James (t) Shawn Borgen (t)	Branch Director	Ryan Butler 406-250-0375
Air Operations	Dennis Morton, John McKee Dan Sepulveda	Division/Group Supervisor	Mike King 406-370-2121 Graydon Galloway(t) 208-546-9653
Safety Officer	Dan Cassidy, Todd Mott (t)		

#### Resources Assigned This Period

Strike Team/Task Force/ Resource Designator	Req#	Last Shift	Leader	# Persons	Drop Off Point /Time	Pick Up Point / Time
HC1 Golden Eagles	C-55	9/14	Robert Villegas	18	Troy Meadow 0600	Troy Meadow 2100
WFM Horseshoe	O-1	9/20	Candice Kutrosky	12	Troy Meadow 0600	Troy Meadow 2100
ENG5 Aberasturi	E-202	9/20	Russell Haynes	3	Troy Meadow 0600	Troy Meadow 2100
ENG6 CNF E473	E-263	9/19	Allen Tennant	5	Troy Meadow 0600	Troy Meadow 2100
SKD1 McKellar	E-193	9/18	Brett Strong	1	Troy Meadow 0600	Troy Meadow 2100
SKD McKellar	E-214	9/17	Harley Toller	2	Troy Meadow 0600	Troy Meadow 2100
DOZ2	E-140		David Krisher	2	Troy Meadow 0600	Troy Meadow 2100
CHIP	E-189	9/17	Don Kelley	1	Troy Meadow 0600	Troy Meadow 2100
EXCA	E-187	9/18	Kody Williams	1	Troy Meadow 0600	Troy Meadow 2100
FMOD Under Dog	O-596	9/18	Gary Balmain	2	Troy Meadow 0600	Troy Meadow 2100
SOF2	O-496	9/16	Tom Nash	1	Troy Meadow 0600	Troy Meadow 2100
SOFR (t)	O-393	9/16	Jacob Broiller	1	Troy Meadow 0600	Troy Meadow 2100
REMS2	E-217	9/19	Ray Storm	8	Troy Meadow 0600	Troy Meadow 2100
EMPF	O-497	9/15	Tommy Kavanaugh	1	Troy Meadow 0600	Troy Meadow 2100
EMPF	O-551	9/16	Matthew Heckman	1	Troy Meadow 0600	Troy Meadow 2100
REAF	O-228	9/12	Michael McGraw	1	Troy Meadow 0600	Troy Meadow 2100
REAF	O-522	9/19	Dan Swanson	1	Troy Meadow 0600	Troy Meadow 2100

#### Work Assignments

**Task:** Utilize crews and heavy equipment to prep indirect lines for burn operations along the 21S02 Road from Beach Meadows to Lion Meadows trailhead. Continue to look for opportunities to go direct with crews and equipment on eastern finger of fire north of Beach Meadows. Monitor Div X-Ray from the air and utilize air resources as needed to keep green islands from impacting control lines west of H-4. Assess the need to insert personnel into H-4 if fire crosses containment lines. Assist with point protection as needed.

**Purpose:** Limit impact to values at risk on northern edge within wilderness, limit fire spread on eastern and southern edge of fire.

**End State:** Values at risk are not impacted by fire. The Spread of fire to the south and east is limited in divisions L / X X-Ray.

#### Special Instructions

- **A/G Tac for Branch Five: RX169.200, TX 169.200. This needs to be hand programmed.**
- Personnel to notify DIVS of potentially sensitive cultural materials.
- Castle Ambulance 3 staged at Whitsett Base Camp. Castle Ambulance 2 staged at the Blackrock Ranger Station. Castle REMS 2 available to all branch divisions.
- Prioritization of all control or containment actions taken during the operational period in this Division will be at the discretion of the DIVS. Actions may have to be taken by the DIVS that are not enumerated in today's IAP. These actions would be a result of a significant change in actual or expected fire behavior over and above that anticipated at the time the IAP was prepared. These actions will be coordinated with and approved by the OSC whenever possible.

#### Division/Group Communication Summary

Function	Channel	Frequency RX	Frequency TX	TONE RX	TONE TX	Function	Channel	Frequency RX	Frequency TX
COMMAND	2	170.6875	166.5750	151.4	151.4	A/G TAC	Must self program	169.2000	169.2000
COMMAND	3	172.5500	162.1875	151.4	151.4	A/G CMD	14	169.1500	169.1500
NIFC T7	9	168.2500	168.2500	151.4	151.4	A/G CMD			
Prepared by Anthony Watts – RESL(t)	Approved By Robin Jermyrn - PSC				Date 9/11/2020			Time 1800	





DIVISION ASSIGNMENT LIST				Branch		Division/Group				
Incident Name				STRUCTURE		NELSON				
SEQUOIA COMPLEX				Operational Period						
				Date: 9/12/2020 to 9/13/2020			Time: 0600-0600			
Operations Personnel										
Operations Chief		Brent Olson, Scott Schrenk Andy James (t) Shawn Borgen (t)			Branch Director			Drew Daily 405-431-9476		
Air Operations		Dennis Morton, John McKee Dan Sepulveda			Division/Group Supervisor			Hunter Seaborn Bell, III 406-670-5633		
Safety Officer		Dan Cassidy, Todd Mott (t)								
Resources Assigned This Period										
Strike Team/Task Force/ Resource Designator		Req#	Last Shift	Leader	# Persons	Drop Off Point /Time	Pick Up Point / Time			
HC2 Patrick 2	C-91	9/19	Austin Hergert	20	Whitsett Base 0600	Whitsett Base 2100				
S/T 2806A	E-280	9/18	Kevin Gotro	21	Whitsett Base 0600	Whitsett Base 2100				
S/T 5810A	E-281	9/18	Sal Gutierrez	22	Whitsett Base 0600	Whitsett Base 2100				
TFLD		9/20	Bill Castonquay	1	Whitsett Base 0600	Whitsett Base 2100				
ENG3 CO River	E-245	9/20	Randy Hill (t)	4	Whitsett Base 0600	Whitsett Base 2100				
ENG3 Greater Eagle	E-246	9/20	Wade Michels	5	Whitsett Base 0600	Whitsett Base 2100				
ENG6 Carlsbad 62	E-259	9/18	Scott Maxwell	3	Whitsett Base 0600	Whitsett Base 2100				
ENG6 Sandoval Brush 22	E-260	9/18	Harris Toya	3	Whitsett Base 0600	Whitsett Base 2100				
ENG6 Farmington Brush 6	E-261	9/18	Duane Bair	2	Whitsett Base 0600	Whitsett Base 2100				
ENG6 Sac Mtn 218	E-262	9/18	Barbara Stephens	3	Whitsett Base 0600	Whitsett Base 2100				
WTT2 K&B	E-236	9/18	James Davis	1	Whitsett Base 0600	Whitsett Base 2100				
WTT2 ICE WT#152	E-242	9/20	Terry Titus	2	Whitsett Base 0600	Whitsett Base 2100				
WTT2 Sacramento Mtn	E-243	9/20	Ed Wishard	2	Whitsett Base 0600	Whitsett Base 2100				
WTT1 Oes WT139	E-282	9/18	Keith Smith	2	Whitsett Base 0600	Whitsett Base 2100				
WTT1 Oes WT42	E-283	9/18	Robin Serna	2	Whitsett Base 0600	Whitsett Base 2100				
WTT1 WT51	E-285	9/18	Richard Murillo	2	Whitsett Base 0600	Whitsett Base 2100				
SOF2	O-394	9/12	Gary Kemp	1	Whitsett Base 0600	Whitsett Base 2100				
EMPF	O-91	9/13	Royce Copeman	1	Whitsett Base 0600	Whitsett Base 2100				
EMPF	O-342	9/14	Yoshimi Toyota	1	Whitsett Base 0600	Whitsett Base 2100				
Castle Ambulance 5	E-337	9/23	Nelson	2	Whitsett Base 0600	Whitsett Base 2100				
Work Assignments										
<p><b>Task:</b> Support line divisions with fireline perimeter control as instructed by Branch Director or Operations Section Chief. Reinforce structure protection plans with hose lays, static water supply and hazard mitigation as instructed by Group Supervisor for values at risk in Camp Nelson, Cedar Slope, Apline Village, Sequoia Crest and Pier Point. Assist Lloyd Structure Group and/or Ponderosa Structure Group as requested by Operations Section Chief or Branch Director.</p> <p><b>Purpose:</b> Protect values at risk from wildfire impacts with emphasis on supporting fireline perimeter control well in advance of direct threats to communities and improvements.</p> <p><b>End State:</b> Values at risk and communities are able to operate in pre-fire condition accounting for public safety.</p>										
Special Instructions										
<ul style="list-style-type: none"> <li>Personnel to notify DIVS of potentially sensitive cultural materials.</li> <li>Castle Ambulance 3 staged at Whitsett Base Camp. Castle Ambulance 2 stage at Black Rock Ranger station. Castle REMS 1 available to all structure divisions.</li> <li>Prioritization of all control or containment actions taken during the operational period in this Division will be at the discretion of the DIVS. Actions may have to be taken by the DIVS that are not enumerated in today's IAP. These actions would be a result of a significant change in actual or expected fire behavior over and above that anticipated at the time the IAP was prepared. These actions will be coordinated with and approved by the OSC whenever possible.</li> </ul>										
Division/Group Communication Summary										
Function	Channel	Frequency RX	Frequency TX	TONE RX	TONE TX	Function	Channel	Frequency RX	Frequency TX	
COMMAND	1	170.0000	166.6750	151.4	151.4	A/G TAC	13	172.3500	172.3500	
R5 T6	11	168.2375	168.2375	151.4	151.4	A/G CMD	14	169.1500	169.1500	
Prepared by Anthony Watts – RESL(t)		Approved By Robin Jermyn - PSC				Date 9/11/2020			Time 1800	







<b>AIR OPERATIONS SUMMARY 220</b>	Prepared By: <b>Dennis A. Morton</b>	Prepared: 0911/2020	Prepared Time: 2000 hrs.
<b>1. INCIDENT NAME: SQF COMPLEX</b>	<b>2. OPERATIONAL PERIOD</b> 09/12/2020	<b>START TIME:</b> 0800	<b>END TIME:</b> 2000
		<b>SUNRISE:</b> 0637	<b>SUNSET:</b> 1906

**3. REMARKS** (Safety Notes, Hazards, Air Operations Special Equipment, etc.).

1. Assess mission complexity and the Benefit vs Risk of the mission.  
2. Ensure visibility and winds are adequate to safely conduct flight operations.  
3. Ensure safe vertical & horizontal separation between aircraft in smoky conditions.  
4. Utilize check points and call in and out of the dips.  
5. If you see a UAS on your division report it up the chain of command to Air Operations, it may or may not be a friendly!  
6. Smoky conditions can hamper our aviation operations adhere to visibility limitations, and DO NOT be pressured into accepting a mission that you know or feel is unsafe!

*(Terminate air operations at sunset... use last ½ hour for RTB. (exceptions allowed—communicate intent)*

<p><b>4. READY ALERT AIRCRAFT:</b>  <b>H-408</b>  Hoist Day/Night Capable  Order through  Communications/Air Attack  See Medical Plan in the IAP</p>	<p><b>5. TFR: 0/9236</b>  Freq: 123.725  Altitude: From the surface up to and including 12,000 feet MSL</p> <p>Polygon see NOTAM  36°22'00"N 118°40'00"W  36°22'00"N 118°12'30"W  36°01'00"N 118°12'30"W  36°01'00"N 118°40'00"W</p>
--	--

6. PERSONNEL	NAME	PHONE #	7. FREQUENCIES	AM	FM	8. FIXED-WING Avail/ Type/ Make-Model/ N#/ Base
AOBD	Dennis A. Morton	406.660.2318	A/A Fixedwing A-6		165.9875	AIRTANKERS: ORDER THRU ATGS
ASGS	John McKee	406.370.7028	A/A Briefing A-167	132.2750		ORDER TYPE 1 HELICOPTERS THROUGH ATGS
ASGS	Daniel Sepulveda	909.374.8944	A/A (Rotor) TFR A-7	123.7250		ORDER AIR TANKERS THROUGH ATGS
ATGS	Ken Crow	559.280.6969	A/G Command A-58	CMD	169.1500	ATGS/HLCO Platforms:
HLCO	Travis Will	949.591.4131	A/G Tactical Branch V A-166	TAC	169.2000	N47TT – AC690 (Crow) N839PA-AS 350B3 (Will)
HEBM Porterville	Lee Stewart	949.591.4131	A/G Tactical Branch I A-5	TAC	172.3500	
HEBM(T)	Travis Carson	208.630.3496	CALCORD/Medivacs		156.0750	
HEBM Peppermint	George Garcia	559.542.2301	DECK		163.100	*PSD DISCREET ONLY - *170.0750* A-141 Email daily aircraft costs to: portervillehelibase@gmail.com
ATBM Porterville	Raul Contreras	559.789.0191	TOLC Porterville Unicom	123.9750 122.8		Porterville Aviation Desk: 559.782.3120 Ext.701
PORTERVILLE HELIBASE	Travis Carson	949.591.4131	Air Guard		168.6250 (110.9 TX)	

**9. HELICOPTERS**

FAA N#	TY	MAKE/ MODEL	BASE	START	AVAIL	REMARKS	FAA N#	TY	MAKE/ MODEL	BASE	START	AVAIL	REMARKS
948CH	1	CH-47D	PVT	UA	1200	A-31	H-522	2	205 A1 ++	Peppermint	0800	0830	A-123
245CH	1	BV-234	PVT	0800	0830	A-53	H-523	2	205 A1 ++	Blackrock	0800	0830	A-11
135BH	1	S-70	PVT	0800	0830	A-76	H-535	3	Bell 407	PVT	0800	0830	A-39
699RH	1	KMAX	PVT	0800	0830	A-32	HLCO 839PA	3	AS-350B3	PVT	0800	0830	HLCO/A-146

10. TASK/ MISSION/ ASSIGNMENT (Type/ function includes: Air Tactical, Retardant, Recon, Personnel Transport, Bucket Operations, SAR, etc.)			FLY FROM	FLY TO
TYPE/FUNCTION	PRIORITY	NAME OF PERSONNEL OR CARGO (if applicable) or instructions for tactical aircraft	MISSION START	
ATGS		Provide continuous coverage over the fire as smoke and weather permits.	0900	Fire
Initial Attack		Initial Attack assistance as requested.	TBD	IA
Medevac		<b>** See Medical Plan in IAP – Review during Division Breakouts **</b>	TBD	Fire
Water Drops		As needed and approved by OPS, order through ATGS/HLCO	0900	Fire
Recon		Fire reconnaissance as requested.	0900	Fire
PSD		As needed and approved by OPS	0900	Fire
OTHER		(Back Haul, Re-Supply, Crew Movement) Place all orders through communications	0900	Peppermint

Helibase, Dip Sites, Pick Up Sites, etc.		Helibase, Dip Sites, Pick Up Sites, etc.	
Bridge Dip "B"	36 12.063' N, 118 27.445' W 5760'	H-12 Camp Nelson	36 08.368' N 118 36.917' W 4800'
Quaking Aspen Dip T2, 3 ONLY!	36 07.285' N, 118 32.815' W 7000'	H-30	36 20.809' N 118 24.512' W 6500'
Confluence Dip "B"	36 7.700' N, 118 26.316' W 4700'	H-20	36 10.960' N 118 29.259' W 6900'
Round Dip "B"	36 12.642' N, 118 28.000' W 6000'	H-21	36 12.650' N 118 30.230' W 6100'
Freeman "NR"	36 6.875' N, 118 27.551' W 5100'	C31	36 18.077' N 118 27.340' W 10800'
Beach Dip (X, U, N Only)	36 6.931' N, 118 17.824' W 7700'	C4	36 10.909' N 118 35.882' W 9100'
(MRB) Camp Nelson	36 08.402' N, 118 36.854' W 4800'	C11	36 0.630' N 118 23.448' W 9900'
H-1 T2	36 9.852' N, 118 26.985' W 6600'	DIV A Sling	36 10.948' N 118 29.360' W 6962'
H-2 T2	36 5.838' N, 118 26.806' W 6000'	Saddle Check	36 10.88' N 118 28.59' W
H-3 Black Rock T2	36 5.609' N, 118 15.666' W 8100'	Ridge Check	36 8.55' N 118 26.72' W
H-4 T2	36 6.128' N, 118 25.772' W 7400'	Needle Check	36 5.89' N 118 27.59' W
H-5 Piles Camp	36 08.278' N, 118 28.678' W 5600'	Lookout IP, Enter 10000'	36 3.89' N, 118 27.51' W
H-6	36 06.155' N, 118 24.808' W 7800'	Porterville HB	36 01.427' N 118 4.112' W 500'
H-7	36 06.833' N, 118 24.373' W 7000'	Peppermint HB	36 4.355' N 118 32.500' W 7500'
H-8	36 06.762' N 118 22.767' W 5700'	C31	36 18.077' N 118 27.340' W 10550'

Visibility Limitations VFR Flight Helicopters Day 1/2 statute mile Clear of clouds

Flights above ground level	Flight Permitted in Winds Less than / Maximum Gust Spread	
	Type 1 Helicopters	Type 2 Helicopters
More than 500' AGL	<50kts / Gusts: N/A	<50kts / Gusts: N/A
Less than 500' AGL	<40kts / Max Gust Spread: 15kts	<40kts / Max Gust Spread: 15kts

"If we never look at the consequences of our behavior, we can always maintain the illusion of our competence."

... The Logic of Failure

INCIDENT RADIO COMMUNICATIONS PLAN		Incident Name SEQUOIA COMPLEX			Date/Time Prepared 9/11/2020	Operational Period Date/Time 9/12/20 0600 9/13/20 0600					
Ch #	Function	Channel Name/Trunked Radio System Talkgroup	Assignment	RX Freq	N or W	RX Tone/NAC	TX Freq	N or W	Tx Tone/NAC	Mode A, D or M	Remarks
1	CMD REPEATER	NIFC C4	DIV A/B/Y/Z	170.0000		151.4	166.6750		151.4	A	JORDON PEAK
2	CMD REPEATER	NIFC C11	DIV X	170.6875		151.4	166.5750		151.4	A	SHERMAN PEAK
3	CMD REPEATER	NIFC C31	DIV L	172.5500		151.4	162.1875		151.4	A	COYOTE PEAK
4	FOREST REPEATER	SQF CH2	ALL/BACKUP	169.9000			165.7000		103.5	A	SQF FOREST RPTR DISPATCH
5	TACTICAL CHNL	NIFC T1	DIV A/NIGHT	168.0500		151.4	168.0500		151.4	A	SQF TACTICAL
6	TACTICAL CHNL	NIFC T3	DIV B	168.6000		151.4	168.6000		151.4	A	SQF TACTICAL
7	TACTICAL CHNL	NIFC T5	SWING	166.7250		151.4	166.7250		151.4	A	SQF TACTICAL
8	TACTICAL CHNL	NIFC T6	DIV Y / Z	166.7750		151.4	166.7750		151.4	A	SQF TACTICAL
9	TACTICAL CHNL	NIFC T7	DIV L / X	168.2500		151.4	168.2500		151.4	A	SQF TACTICAL
10	TACTICAL CHNL	R5 T5	BLACK	167.1125		151.4	167.1125		151.4	A	SQF TACTICAL
11	TACTICAL CHNL	R5 T6	NELSON/LLOYD	168.2375		151.4	168.2375		151.4	A	STRUCTURE TAC
12	TACTICAL CHNL	VFIRE 25	POND	154.2875		156.7	154.2875		156.7	A	STRUCTURE TAC
13	AIR TO GROUND	A/G TAC	A/G TAC	172.3500			172.3500			A	A/G TAC
14	AIR TO GROUND	A/G CMD	A/G CMD	169.1500			169.1500			A	A/G CMD OVERHEAD ONLY
15	TACTICAL CHNL	CALCORD	MEDEVAC	156.0750		156.7	156.0750		156.7	A	CALCORD MEDEVAC
16	AIR GUARD	AIR GUARD	EMCY ONLY	168.6250			168.6250		110.9	A	AIR GUARD
Prepared by (Communications Unit)											
COMM UNIT 949.330.9979 / COM1 DUSTIN SENE 406.581.9816											
Incident Location SEQUOIA NF											
County			State	CA	Latitude	N	Longitude	3-7-77	W		

The convention calls for frequency lists to show four digits after the decimal place, followed by either an "N" or a "W", depending on whether the frequency is narrow or wide band. Mode refers to either "A" or "D" indicating analog or digital (e.g. Project 25) or "M" indicating mixed mode. All channels are shown as if programmed in a control station, mobile or portable radio. Repeater and base stations must be programmed with the Rx and Tx reversed.

# MEDICAL PLAN (ICS 206 WF)

Controlled Unclassified Information//Basic

1. Incident/Project Name		2. Operational Period						
Sequoia Complex		Date/Time 09/12/20 0600hrs-09/13/20 0600hrs						
3. Ambulance Services								
Name	Complete Address	Phone & EMS Frequency	Advanced Life Support (ALS) Yes      No					
Imperial Ambulance (west side)	28551 Hwy 190, Porterville, CA	559-687-3309	<input checked="" type="checkbox"/>	<input type="checkbox"/>				
Hall Ambulance (east side)	1001 21st St, Bakersfield	661-327-4111	<input checked="" type="checkbox"/>	<input type="checkbox"/>				
Liberty Ambulance (Castle Ambulance 4)	ICP (Kern Valley High School)	Command frequency	<input checked="" type="checkbox"/>	<input type="checkbox"/>				
4. Air Ambulance Services								
Name	Phone	Type of Aircraft & Capability						
Kern County FD H408	657-464-7808	Incident Primary Air Rescue, Bell 205, ALS, 24/7 Hoist						
Skylife	800-305-5433	ALS, No Hoist, requires 100x100 LZ						
CHP H40 (Fresno)	559-262-0400	Air ambulance, ALS 24/7, DAY HOIST ONLY, NIGHT STAFFING ON CALL AFTER 1800 HRS						
US COAST GUARD	REGIONAL COMMAND CENTER 510-437-3701	AIR RESCUE, HOIST 24/7, NO IN-FLIGHT MEDICAL						
5. Hospitals								
Name Complete Address	GPS Datum – WGS 84 Coordinate Standard Degrees Decimal Minutes DD° MM.MMM' N - Lat DD° MM.MMM' W - Long		Travel Time Air      Gnd		Phone	Helipad Yes      No		Level of Care Facility
	Lat:	Long:	Min	Hrs		Yes	No	
Kern Valley Hospital 6412 Laurel Ave Lake Isabella, CA	35 38.07°N	118 24.35W	30	2-3Hr	760-379-2681	<input checked="" type="checkbox"/>	<input type="checkbox"/>	Emergency Room
	VHF:							
	Sierra View Med Ctr 465 W Putnam Ave Porterville, CA			30	2-4.5 hrs	559-784-1110	<input type="checkbox"/>	
Long:								
VHF:								
Kaweah Delta Health 400 W. Mineral King Ave. Visalia, CA 93291	36 19.65°N	119 17.676°W	30	2.5-5 Hr	559-624-2000	<input checked="" type="checkbox"/>	<input type="checkbox"/>	Level 2 Trauma
	Long:							
	VHF:	468.0375 PL141.3 DTMF 3211 12K lb pad limit						
Kern Medical Center 1700 MT Vernon Ave.Bakersfield, CA 93306	35 22.95°N	118 58.182°W	45	2.5-3.75 hr	661-326-2000	<input checked="" type="checkbox"/>	<input type="checkbox"/>	Level 2 Trauma
	Long:							
	VHF:	463.100 12K lb pad limit						
Community Regional Medical Center 2823 Fresno St.Fresno, CA 93721	36 44.568°N	119 47.094°W	1 hr	3-5.25 hr	559-459-6000 ER 559-459-4220	<input checked="" type="checkbox"/>	<input type="checkbox"/>	Level 1 Trauma/ Burn Center
	Long:							
	VHF:	123.05 key 5times for lights 22K lb pad limit						
6. Division   Branch   Group		Area Location Capability						
Div A		EMS Responders & Capability:		REMS 1 (4 personnel)				
		Equipment Available on Scene:		ALS, extrication, utv				
		Medical Emergency Channel:		Command				
		ETA for Ambulance to Scene:						
		Air:		30 mins				
		Ground:		2 hrs				
		Approved Helispot:		H20				
		Lat:		36 10.960°N				
		Long:		118 29.259°W				

# MEDICAL PLAN (ICS 206 WF)

Controlled Unclassified Information//Basic

1. Incident/Project Name	2. Operational Period	
<b>Div B</b>	EMS Responders & Capability:	Christopher Laponis, EMPF; Chris Inman, EMPF
	Equipment Available on Scene:	ALS,
	Medical Emergency Channel:	Command
	ETA for Ambulance to Scene:	
	Air:	30 min
	Ground:	2 hrs
	Approved Helispot:	H 20
	Lat:	36 10.960°N
	Long:	118 29.259°W
<b>Div Y/Z</b>	EMS Responders & Capability:	Silas Fischer EMPF; Patrick Garcia, EMTF; Tom Zamora EMPF; Castle ambulance 3
	Equipment Available on Scene:	ALS; ALS Ambulance
	Medical Emergency Channel:	Command
	ETA for Ambulance to Scene:	
	Air:	30 min
	Ground:	2 hrs
	Approved Helispot:	H1
	Lat:	36 9.852°N
	Long:	118 26.985°W
<b>Div L/X</b>	EMS Responders & Capability:	Tommy Kavanaugh, EMPF; Matthew Heckman, EMPF; REMS 2 (7 personnel)
	Equipment Available on Scene:	ALS
	Medical Emergency Channel:	Command
	ETA for Ambulance to Scene:	
	Air:	35 mins
	Ground:	Air only
	Approved Helispot:	H2
	Lat:	36 5.838°N
	Long:	118 26.806°W
<b>Blackrock Backcountry</b>	EMS Responders & Capability:	Scott Hamilton, EMPF; EMPF; Joshua Terry, EMPF; Castle Ambulance 2
	Equipment Available on Scene:	ALS; ALS Ambulance
	Medical Emergency Channel:	Command
	ETA for Ambulance to Scene:	
	Air:	35 mins
	Ground:	3 hrs
	Approved Helispot:	H 3
	Lat:	36 5.609°N
	Long:	118 15.666°W
<b>Structure Nelson</b>	EMS Responders & Capability:	Royce Copeman EMPF; Yoshimi Toyota EMPF; Castle Ambulance 4
	Equipment Available on Scene:	ALS; ALS ambulance
	Medical Emergency Channel:	Command
	ETA for Ambulance to Scene:	
	Air:	35 mins
	Ground:	3 hrs
	Approved Helispot:	Peppermint Helibase
	Lat:	36 4.355°N
	Long:	118 32.500°W
<b>Night Div</b>	Equipment Available on Scene:	Castle Ambulance 3 , Steve DeVencenzi EMTF
	Medical Emergency Channel:	Command
	ETA for Ambulance to Scene:	
	Air:	35 mins
	Ground:	2 hr
	Approved Helispot:	H 5
	Lat:	36 8.278°N
Long:	118 28.678°W	
Emily Ellick-Flettire-405-593-3369	09/11/2020	Dan Cassidy SOF1 406.250.4599 09/11/2020

**MEDICAL PLAN (ICS 206 WF)**  
**Controlled Unclassified Information//Basic**  
**ASSIGNMENT-SPECIFIC MEDICAL EMERGENCY ACTION PLAN**

**Pre-Planning for today's assignment – See Page 2 IRPG**

What are the likely hazards that could cause injuries? What kind of severe injuries?		
Who is the likely in-charge DIVS or overhead for an emergency in your assigned area today? (i.e. "Division Zulu")		
Who are the Medical personnel assigned to your part of the incident? What are their capabilities?		
Other Emergency Responders: fire dept, crash rescue, ambulance?		
Communications: Command channel, Air to Ground, Medical helicopters, local rescue/medical?		
Transportation methods available	Ground vehicle, drop point, coordinates, travel route?	
	Aircraft I.D, helispot names, coordinates? Hoist capable, internal transport	
	Other available methods - contingency	
Most likely workforce for evacuation		

**Response checklist**

**Who takes charge?**

- DIVS or designated Overhead manages the overall scene and evacuation process.
- Medical personnel and emergency responders manage patients and conduct rescues.
- OPS and IC make command decisions so the emergency can be given full attention and management. They continue to manage ongoing incident operations.

**Response sequence:**

- First, secure the scene and protect responders and patients from further injury.
- Clear the Command channel for "Emergency Traffic only" if this is a critical emergency. If not, inform Communications of non-critical-emergency status and use normal communications.
- Contact closest Medical personnel and DIVS or designated Overhead for response.
- Notify Communications to initiate Accident Action Plan response.

**Information for Communications: (See Medical Incident Report, page 108, IRPG)**

- Type and extent of injuries?
- Airway or breathing problems? Serious bleeding?
- Is an EMT present or needed? Are Paramedics (Advanced Life Support) needed?
- Specific location of patients (Lat/Long, access route, DP#, helicopter Landing Zone)?
- What type of transport is needed? Helicopter medevac, hoist, ambulance or ground transport?
- Name of contact person in charge of the scene.
- Do not use names of patients at any time.
- **Medical Emergency Responders confer with Medical Unit Leader and DIVS or designated Overhead to determine if this is a critical emergency and what type of transport is needed.**



# HUMAN RESOURCE MESSAGE

*There is zero tolerance for drugs and alcohol on this fire incident.*



**Some people might be too tired to smile, so give them one of yours.**

*Spend your life lifting people up, not putting people down.*

\*\*\*\*\*

Debby Hassel, HRSP (406) 274-7985

[hrspfire@gmail.com](mailto:hrspfire@gmail.com)

## REMOTE CHECK-IN

1. Scan the QR code on front of IAP to access the fillable check-in form. If you are unable to scan the code, please call Status/Check-in at **858-204-7419** for assistance.
2. Email qualification cards, manifests, contract, AD paperwork to:  
**2020.castle.finance@firenet.gov**

### *Are You a TRAINEE?*

1. Scan these codes to access the fillable *trainee* information forms. Send photo of qualification cards and task book cover to: **heather.e.grove@usda.gov** or **matthew.boss@usda.gov**



Registration



Check-out



Exit Interview

2. Call Incident Training Specialist 530-394-8076 (Heather) or 951-314-1427 (Matt) with questions from 0600 – 2100 daily.

## DEMOBILIZATION IS NOW REMOTE!!

### *Demobilization Steps:*

1. ALL accountable property checked-out from the incident must be returned (i.e. communications, supply). Items may be returned at Whitsett Base Camp or ICP.
2. Submit all finance documentation (time must be projected for travel home).
  - a. BE SURE to call Finance 1 day prior to your scheduled DMOB to ensure time is complete.
  - b. Only 1 representative per resource should go to Finance at ICP.
  - c. Abide by scheduled DMOB time or call Finance for an unscheduled DMOB.
  - d. Government agency resources that would like to close out their time 100% remotely should call **949-591-4123** when they are close to their DMOB date and make necessary arrangements to complete the process.
3. Scan the QR code on the front of the IAP to complete the DMOB process and start your travel home. **DO NOT LEAVE the incident until you have confirmed with Demobilization Unit Leader at 951-235-1568. If you have questions, please call!**



## EXTENSIONS & RR

- Extensions or RR's MUST be requested by your incident supervisor and approved by your home unit supervisor prior to being processed.
- Extensions forms can be obtained from DMOB or the plans representative onsite at Camp Whitsett.

## FINANCE MESSAGE

### OPTIONS FOR SUBMITTING TIME:

1. **Fillable PDF CTR/Shift Ticket:** QR code to the fillable forms are included below. If you do not have QR capabilities finance can e-mail you the forms directly.



2. **Hard Copy CTR/Shift Ticket:** Fill out a hard copy CTR, snap a picture and email/text that into finance. If you send in a picture, please make sure it is legible and includes the supervisor's signature at the bottom! Please make sure to include your phone number in the **Remarks** in case we have questions.
  3. OR you may turn in your actual hard copy as usual at Whitsett Spike Camp & Troy Meadow.
- Please try to submit time at least every other day
  - H-Pay justifications are still required on your CTRs – “H = Hazard Pay” is not sufficient

**\*\*CONTRACTED EQUIPMENT PLEASE CONTACT FINANCE IF YOU WANT TO START THE PROCESS OF AN INTERIM PAYMENT\*\***

**2020.castle.finance@firenet.gov**

Finance Main Line: 949-591-4123

TIP:

***\*\*In order to use fillable pdf forms, you must have some version of Adobe Acrobat downloaded on your device. If you have any issues opening the documents call finance for assistance. \*\****



# **FINANCE**

## **S# PROCESS**

### **FEDERAL RESOURCES ONLY**

- **PROPERTY LOSS-REPAIR-REPLACE OF NON-NATIONAL FIRE EQUIPMENT SYSTEM (NFES) OR NON-STANDARD CACHE ITEMS**

- **CAN IT BE REPLACED AT SUPPLY?**

1. **General message is needed (ICS 213) with contact information NAME/PHONE #/EMAIL/RESOURCE ORDER # send to Supply at [2020.castle.ordering@firenet.gov](mailto:2020.castle.ordering@firenet.gov)**

- **IF YOU NEED AN S# FOR REPLACEMENT BECAUSE SUPPLY DOES NOT HAVE IT PLEASE DO THE FOLLOWING**

2. **General message is needed (ICS 213) with contact information NAME/PHONE #/EMAIL/RESOURCE ORDER #. A description of property damage or loss needs to be documented and pictures of damaged items. Please send to finance at [2020.castle.finance@firenet.gov](mailto:2020.castle.finance@firenet.gov)**

3. **We have Comp/Claims on site! Please reach out to us with any questions at 406-363-8956 or 406-366-3724.**

09/12/2020

TENTATIVE RELEASE

CASTLE US-CA-SQF-002541

**EQUIPMENT**

E-90	0730	(WTT2)	INF WT21
E-136	0745	(ENG3)	ENGINE - T3 - 346 (HODGDON
E-135	0800	(ENG3)	OVD E3132

**OVERHEAD**

O-832	0900	(HECM)	CREEK, ISAAC B
O-252	0915	(REAF)	TOOMEY, ADAM EVAN
O-143	0930	(PACK)	ALLEN, EMILY R
O-232	1600	(SITL)	ALLEN, SEAN TIMOTHY
O-834	1700	(HECM)	BENGSON JR, ROBERT ELI
O-243	1700	(FDUL)	HOLT, JAMES ALTON
O-234	1700	(SOFR)	JOHNSON, DWAYNE DEVIN
O-523	2000	(ITSS)	VAISA, JOHN MICHAEL

# Things to Know- Resource Message

SQF Complex 9/12/20

## Reporting of Cultural Sites

- Do not use the radio. Looters listen to our frequencies and will note where you find things.
- Grab a GPS point, bump it up the chain of command, or directly inform a READ.

## Trash, Litter, and Food

- Please remove all trash, litter, and uneaten food from the fireline. This includes things like hose ties, flagging, and food wrappers.
- Food items left on the line or at camp attract wildlife and cause problems like bears or rodents in camp.

## Sensitive Areas

- READs will be flagging sensitive areas during the incident.
- By default, please avoid going into these areas.
- The two flagging colors used are a strip of blue and a strip of red.
- For more information, please consult with a READ.

## Keep Up the Good Work!

Continue to do good work for cultural and natural resources by doing the following:

- Picking up trash and litter.
- Removing unused flagging.
- Sharing information and working alongside READs.
- When moving on to a new area, leaving the old area better than you found it.

## Tree Identification – Giant Sequoia vs Incense Cedar



**Giant Sequoia** – The namesake of the forest and the largest tree on Earth, the giant sequoia is an impressive tree. It does not have a very large cone. It is about the size and shape of a chicken egg. Its needles are similar to an incense cedar but are rounded and prickly to the touch. Sequoia bark is red and is soft and shreds easily.



**Incense Cedar** – Many mistake incense cedar trees for small giant sequoia trees. They, however, do not produce a traditional shaped cone. Instead their seeds are on six cone scales that form a pod-like cone that splits when it dries. Their needles, though scale-like, are flattened and not prickly. Their bark, though red like a sequoia, is hard and doesn't shred.



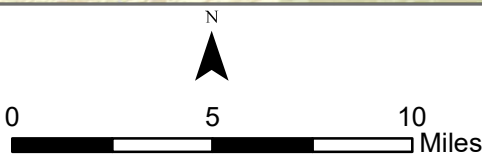
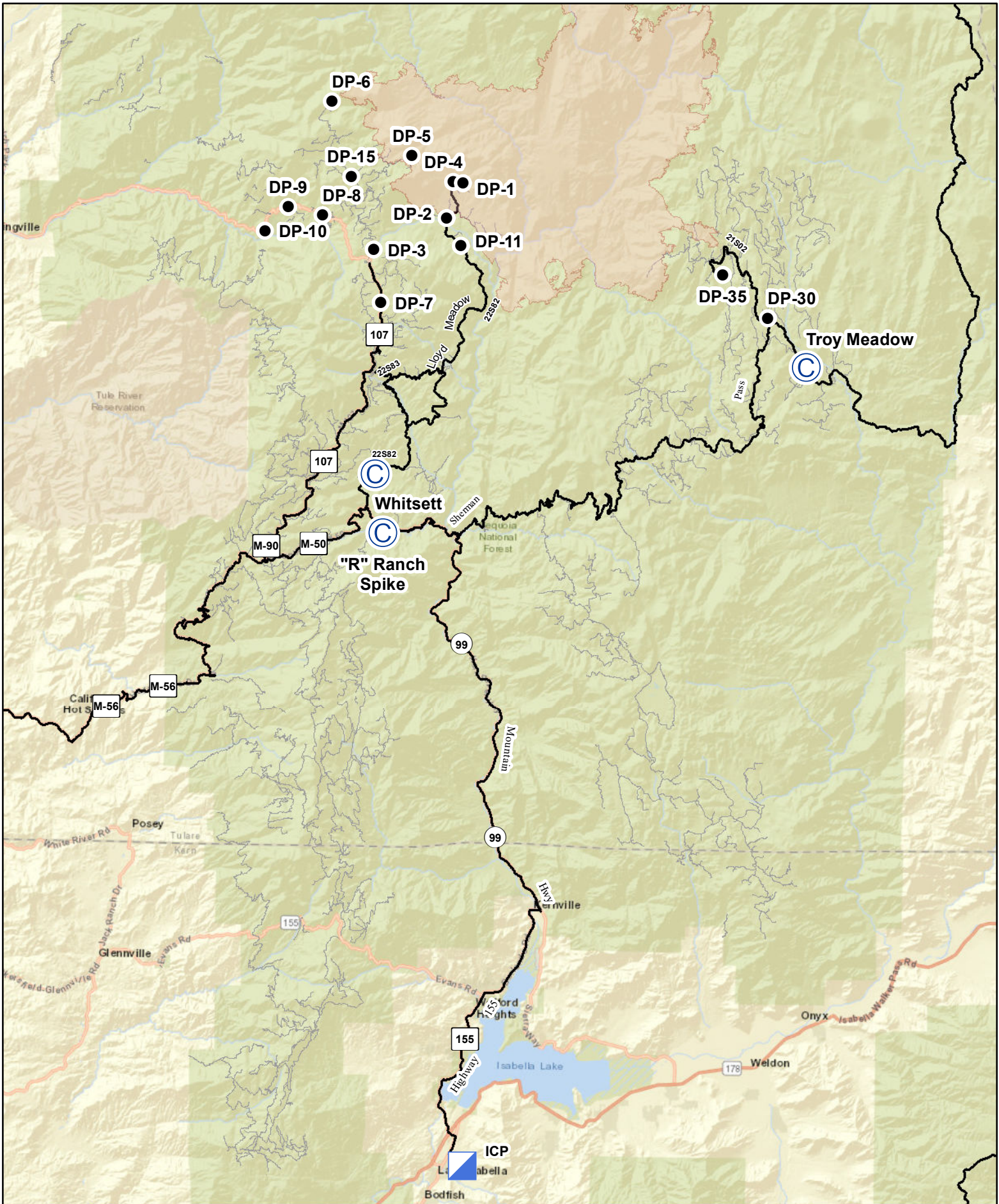
# Northern Rockies Team 1

## SEQUOIA COMPLEX

### PHONE LIST

POSITION	NAME	MOBILE PHONE
<b>SAFETY</b>		
Safety Officer 1	Cassidy, Dan	406-250-4599
<b>PUBLIC INFORMATION</b>		
Public Information Officer 1	Smith, Jeannette M	406-544-0131
<b>LIAISON</b>		
Liaison Officer	Taylor, Robert L	406-544-4679
<b>OPERATIONS</b>		
Operations Section Chief 1	Olson, Brent H	406-249-4994
Line Ops	Schrenk, Scott	406-250-0354
Air Ops	Morton, Dennis	406-660-2318
<b>PLANNING</b>		
Planning Section Chief	Jermyn, Robin	406-360-5936
Planning Section Chief (t)	Carlin, Rob	406-249-1989
Deputy Planning Chief	Gump, Robert	850-688-7623
Status Check In	Heinsch, Faith Ann	858-204-7419
DEMOB	Murphy, Tanya	951-235-1568
Training Specialist	Boss, Matt	951-314-1427
Sequoia NF READ	Courter, Josh	559-920-7023
Inyo NF READ	Barnett, Adam	760-920-8104
<b>LOGISTICS</b>		
Logistics Section Chief 1	Showers, Charles	406-531-3691
Ordering Manager	Lind, Rita	406-291-3012
Supply Unit Leader	King, Josh	406-855-0984
Communications Unit Leader	Sene, Dustin	406-581-9816
COVID Hotline		949-330-9973
<b>FINANCE</b>		
Finance Section Chief 1	Schrenk, Amy	406-830-5214
General Finance Information		949-591-4123





**Transportation**  
**Sequoia Complex**  
 CA-SQF-002622  
 09/11/20





# MEDICAL PLAN (ICS 206 WF)

Controlled Unclassified Information//Basic

## Medical Incident Report

**FOR A NON-EMERGENCY INCIDENT, WORK THROUGH CHAIN OF COMMAND TO REPORT AND TRANSPORT INJURED PERSONNEL AS NECESSARY.**

**FOR A MEDICAL EMERGENCY: IDENTIFY ON SCENE INCIDENT COMMANDER BY NAME AND POSITION AND ANNOUNCE "MEDICAL EMERGENCY" TO INITIATE RESPONSE FROM IMT COMMUNICATIONS/DISPATCH.**

**Use the following items to communicate situation to communications/dispatch.**

**1. CONTACT COMMUNICATIONS / DISPATCH** (Verify correct frequency prior to starting report)

*Ex: "Communications, Div. Alpha. Stand-by for Emergency Traffic."*

**2. INCIDENT STATUS:** Provide incident summary (including number of patients) and command structure.

*Ex: "Communications, I have a Red priority patient, unconscious, struck by a falling tree. Requesting air ambulance to Forest Road 1 at (Lat./Long.) This will be the Trout Meadow Medical, IC is TFLD Jones. EMT Smith is providing medical care."*

Severity of Emergency / Transport Priority	<input type="checkbox"/> <b>RED / PRIORITY 1 Life or limb threatening injury or illness. Evacuation need is IMMEDIATE</b> <i>Ex: Unconscious, difficulty breathing, bleeding severely, 2° – 3° burns more than 4 palm sizes, heat stroke, disoriented.</i> <input type="checkbox"/> <b>YELLOW / PRIORITY 2 Serious Injury or illness. Evacuation may be DELAYED if necessary.</b> <i>Ex: Significant trauma, unable to walk, 2° – 3° burns not more than 1-3 palm sizes.</i> <input type="checkbox"/> <b>GREEN / PRIORITY 3 Minor Injury or illness. Non-Emergency transport</b> <i>Ex: Sprains, strains, minor heat-related illness.</i>
Nature of Injury or Illness & Mechanism of Injury	Brief Summary of Injury or Illness <i>(Ex: Unconscious, Struck by Falling Tree)</i>
Transport Request	<i>Air Ambulance / Short Haul/Hoist Ground Ambulance / Other</i>
Patient Location	<i>Descriptive Location &amp; Lat. / Long. (WGS84)</i>
Incident Name	<i>Geographic Name + "Medical" (Ex: Trout Meadow Medical)</i>
On-Scene Incident Commander	<i>Name of on-scene IC of Incident within an Incident (Ex: TFLD Jones)</i>
Patient Care	<i>Name of Care Provider (Ex: EMT Smith)</i>

**3. INITIAL PATIENT ASSESSMENT:** Complete this section for each patient as applicable (start with the most severe patient)

Patient Assessment: See IRPG PAGE 106

Treatment:

**4. TRANSPORT PLAN:**

Evacuation Location (if different): *(Descriptive Location (drop point, intersection, etc.) or Lat. / Long.)* Patient's ETA to Evacuation Location:

Helispot / Extraction Site Size and Hazards:

**5. ADDITIONAL RESOURCES / EQUIPMENT NEEDS:**

*Example: Paramedic/EMT, Crews, Immobilization Devices, AED, Oxygen, Trauma Bag, IV/Fluid(s), Splints, Rope rescue, Wheeled litter, HAZMAT, Extrication*

**6. COMMUNICATIONS: Identify State Air/Ground EMS Frequencies and Hospital Contacts as applicable**

Function	Channel Name/Number	Receive (RX)	Tone/NAC *	Transmit (TX)	Tone/NAC *
COMMAND					
AIR-TO-GRND					
TACTICAL					

**7. CONTINGENCY: Considerations:** If primary options fail, what actions can be implemented in conjunction with primary evacuation method? Be thinking ahead.

**8. ADDITIONAL INFORMATION:** Updates/Changes, etc.

**REMEMBER:** Confirm ETA's of resources ordered. Act according to your level of training. Be Alert. Keep Calm. Think Clearly. Act Decisively.





