

SEQUOIA COMPLEX

INCIDENT ACTION PLAN

DAY SHIFT

OPERATIONAL PERIOD
Monday September 14, 2020
0600 to 2100

CA-SQF-002541
P5NG2P (0513)

Values

Firefighters and Public Safety

Communities

Ponderosa, Camp Nelson, Pyles Boys Camp, Rogers Camp, Sequoia Crest, Cedar Slope, Alpine Village, Redwood Drive, Lloyd Meadows, Mountain Aire, Pierpoint, Coy Flat

Infrastructure & Physical Assets

Osa, Beach, Casa Vieja and Beck Meadows, USGS Seismic Station, Blackrock RS, Quinn RS, Kern RS, Tule River Municipal Watershed, roads, bridges, utilities, other agency structures, private inholdings, dispersed and developed recreation sites

Cultural Sites

Monache Mountain, Monache Meadow, and other archaeological & cultural sites

Sequoia Groves

Freeman Giant Sequoia Grove, Dillonwood Grove, and other groves

TES Habitat

Pacific Fisher, Little Kern Golden Trout, Mountain Yellow Legged Frog, CA Spotted Owl, Goshawk, Sierra Nevada Bighorn Sheep



INCIDENT OBJECTIVES	1. Incident Name SEQUOIA COMPLEX	2. Date Prepared 9/13/2020	3. Time Prepared 1630
4. Operational Period			
September 14, 2020 0600 - 2100 DAY SHIFT			
5. General Control Objectives for the Incident			
<ul style="list-style-type: none"> • Provide point protection of values at risk within communities and associated infrastructure to prevent loss of structures, utilities, and developed sites and facilities including: <ul style="list-style-type: none"> ▪ The communities of Mountain Home, Balch Park, Doyle Springs, Camp Wishon, Camp Nelson, Pyles Boys Camp, Rogers Camp, Cedar Slope, Sequoia Crest, Alpine Village, Redwood Drive, Lloyd Meadows, Mountain Aire, Ponderosa, Pierpoint, and Coy Flat, • Infrastructure at Freeman Giant Sequoia Grove, Dillonwood Grove, and other groves; Blackrock, Kern, and Quinn Ranger Stations; Osa, Beach, Casa Vieja, and Beck Meadows; Tule River Municipal Watershed; private inholdings; roads, bridges, utilities, trailheads, developed and dispersed recreation sites and facilities trailheads and facilities; • Monache Mountain, Monache Meadow and other archaeological and cultural sites. • Continue to hold and establish control lines that are safe for firefighters and provide a high probability of success to keep the fire north of Durr Wood Camp and west of Toowa Range to King Fisher Ridge to 22S05 Road. • Monitor the spread/growth of the Shotgun Fire using air operation assets. • Coordinate with Duty Officers from the Sequoia and Inyo NFs, Sequoia and Kings Canyon NPs, and the Tule River Indian Reservation on support to any new initial attack. 			
6. Management Objectives			
<ul style="list-style-type: none"> • Implement suppression actions that have a high potential for success, carefully weighing risk exposure to firefighters. • Provide for the safety of firefighters, aviation and public through clear communication. Ensure an understanding of strategies and tactics, including a clearly defined and obtainable end state, in order to facilitate sound risk mitigation decision making. • Implement social distancing and adhere to the “module of one” concept to reduce physical exposure and transmission of COVID-19, to provide for the health and safety of all incident personnel. • Minimize to the extent feasible smoke exposure to firefighters, communities and other affected areas to reduce susceptibility to the consequences from COVID-19 exposure. • Maintain and strengthen relationships with partner agencies, stakeholders, cooperators, community leaders, and local agencies utilizing most effective platforms available. • Minimize adverse effects from suppression actions on riparian areas, wetlands, Little Kern Golden Trout, Mountain Yellow Legged Frog, California Spotted Owl, Pacific Fisher, and Sierra Nevada Bighorn Sheep habitats. • Minimize impacts to Wilderness areas; use minimum impact suppression tactics (MIST) by utilizing trails, streams, ridges and natural barriers when possible for control lines. 			
7. Commander’s Intent			
<ul style="list-style-type: none"> • Safety: Address fire fighter, public, and aviation safety through hazard/exposure mitigation. • Communication: We will keep the Agency Administrators informed of significant accomplishments and issues. • Risk Management: We will use a robust risk assessment process to mitigate unnecessary risk to fire fighters and update and/or revise decisions as necessary. • Human Resources: We will ensure that all incident personnel be treated with dignity and respect. We have a zero tolerance for harassment, alcohol, or illegal drug use. • Operations: We will make informed tactical decisions engaging the fire in the right locations with the appropriate resources. • Public Information: We will provide timely and accurate information through the press, meetings, trap lines, briefings, and social media. • Stakeholders: We will coordinate with the delegating agencies to identify key partners and keep them effectively informed of progress and to use their local knowledge. • Finance: We will establish and monitor cost effective methods for accomplishing incident objectives. 			
8. ATTACHMENTS (X IF ATTACHED)			
[X] Organization List - ICS 203	[X] Medical Plan - ICS 206	[] _____	
[X] Division Assignment Lists - ICS 204	[X] Unit Log 214	[] _____	
	[X] WF206 8 Line	[] _____	
9. Prepared By (Planning Section Chief)		10. Approved By (Incident Commander)	
Rob Carlin PSC1 (t)		Michael Goicoechea IC	

ORGANIZATION ASSIGNMENT LIST				Operations Section	
1. Incident Name		Sequoia Complex		Field Operations	Scott Schrenk
2. Date Prepared	9/13/2020	3. Time Prepared	1700	Planning Operations	Brent Olson 406.249.4994 / Shawn Borgen (t)
4. Operational Period				Night Operations	Andy James (t)
September 14, 2020		0600 to 2100		Branch I Director	Justin Kaber
DAY SHIFT				Branch II Director	Ryan Butler
Incident Commander and Staff					
Incident Commander	Mike Goicoechea				
Deputy	Mark Goeller / Greg Poncin				
Safety Officer	Dan Cassidy / Todd Mott (t)				
Information Officer	Jeannette Smith 406.544.0131				
Liaison Officer	Rob Taylor 406.544.4679				
Agency Representative					
SQF AA	Constance Cummins / Ann Niesen (t)				
SQF and INFAR	Phillip DeSenze				
SQF READ	Adam Barnett 760.920.8104				
INF AA	John (Pancho) Smith				
INF READ	Adam Barnett 760.920.8104				
SEKI AA	Lee Taylor				
SQF Chief 1	Angie Sanchez-Hand				
Sequoia & Kings NPS	Mike Theune				
Tulare Co FD	Jeff McLaughlin				
Tulare CO Sheriff	Lt. Bobby Rader 559.731.3754				
SoCAL Edison	Troy Whitman				
CHP	Chad Patton				
Tribal Liaison	Dirk Charley 559.554.5433				
Tule River Tribe – FMO	Zane Santos 559.339.8686				
Planning Section				Branch I	
Section Chief	Robin Jermyn 406.360.5936 / Rob Carlin (t)				
Deputy	Rob Gump 850.688.7623				
Situation Unit	Derek Trauntvein 307.431.8598 Lance Robinson 208.421.5969				
Demobilization Unit	Tanya Murphy 951.235.1568				
Resources Unit Leader	Anya Moline 406.366.1979 / Anthony Watts (t)				
Status Check-in	Faith Ann Heinsch 858.204.7419				
Fire Behavior Analyst	Brian Anderson 406.660.0450 / David Greathouse				
Long-Term Analyst	LaWen Hollingsworth 406.552.5440 / Alicia Reiner (t)				
GIS Specialist	Erin Heiselmann 406.546.4014 Nate Meyer 307.761.1541 / McIntyre Murphy (t)				
Computer Specialist	Tim McCracken 303.859.7753				
Meteorologist	Dan Byrd 240.778.4278				
Human Resource	Debby Hassel 406.274.7985				
Training Specialist	Matt Boss (t) 951.314.1427				
Logistics Section				Branch II	
Section Chief	Charlie Showers 406.370.3787 Jim Evanoff 406.223.8660 / LeRoy Evans (t)				
Ordering Manager	Rita Lind 310.650.1222 or 423.534.9699 Kristin Troop (virtual)				
Supply Unit	Josh King 406.855.0984 / Brent Elmore (t)				
Facilities Unit	James Andruzzi 917.443.2556 / Matt LaTray				
Base Camp	Patrick Beers (t) 253.318.7992				
Ground Support Unit	Keith Windell 213.503.4243				
Communications Unit	Dustin Sene 406.581.9816				
Communications Tech	Trent Coppinger 406.581.9027				
Medical Unit	Emily Ellick-Flettire 405.593.3369 / Levi Clymer				
Security Manager	Brian Thietje 262.994.8001				
				Branch V	
				Alpha	Kate Airhart
				Bravo	Rocky Wagoner
				Yankee / Zulu	Stryker Clark / Jerry Olson (t)
				Branch II	
				Golf	Mike King / Graydon Galloway (t)
				Branch V	
				Backcountry / Lima	Geoff Farinholt / Richard Baker (t)
				Structure	
				Nelson	Hunter Seaborn Bell, III
				Ponderosa	Tom McLeod (t)
				Night	
				Alpha / Bravo	Jon Norman
				Yankee / Zulu	John Lange (t)
				Structure	Derek Steidley
				Air Operations Branch	
				Air Operations Branch Director	Dennis Morton 406.660.2318
				Air Support Group Supervisor	John McKee 406.370.7028 / Dan Sepulveda
				Air Tactical Group Supervisor	Tony Duprey / Ken Crow
				Finance Section	
				Section Chief	Amy Schrenk 406.830.5214
				Time Unit	Marta Lujan 970.275.3120
				Equipment Time	Lynda Pike 406.382.0086
				Personnel Time	Tama Lester 580.212.1017
				Cost Unit	Khon Viengkham 703.217.7269
				Procurement Unit Leader	Dana Bangart 406.360.0029
				Comps / Claims	Leon Augustine 406.363.8956 Shannon Maxwell (t) 406.366.3724
				IBA	Nancy Gibson
WHITSETT ORGANIZATION					
				Deputy IC	Mark Goeller
				Safety	Todd Mott (t)
				Operations	Scott Schrenk / Andy James (t)
				Plans	Rick Moore
				Logistics	Roylene Gaul
TROY MEADOWS ORGANIZATION					
				Branch	Ryan Butler
				Base Camp Manager	Pat Beers 253.318.9792
CAMP NELSON ORGANIZATION					
				Division	Hunter Seaborn Bell, III
				Base Camp Manager	Bill Fitch 631.978.8084 or 559.542.2511
				Prepared by:	Anya Moline - RESL

Safety Message

The Risk Management Process

Risk Management doesn't get in the way of doing business – it is the way we conduct business in the fire world. The risk management process assists in ensuring that critical factors and risks of the fireline work environment are considered during decision making.

Good risk management utilizes five key steps:

- **Maintaining Situational Awareness**
Obtain information by scouting the fire and identifying hazards. Consider all aspects of the current and future conditions and recognize the need for action.
- **Identify Hazards**
Assess hazards to determine risks and potential loss, cost, and mission/operational degradation based on probability and severity.
- **Controlling Hazards**
Determine the best approach to mitigate or control the risk from the hazards assessed. Establish controls and reevaluate each risk until it is reduced to a level where benefits outweigh potential costs.
- **Making a Decision**
Consider whether controls in place were selected based on expected fire behavior and whether instructions have been given and understood. Make certain the decision is made at the appropriate level and reject the action if the risk is considered unacceptable.
- **Evaluating Effectiveness**
Evaluate effectiveness of controls and decisions. Stay on top of the situation and adjust risk controls as necessary. If controls do not work, determine problem and derive an alternate solution and maintain the feedback line.

Minimize Risk – Don't Transfer Risk

Dan Cassidy SOF1 NR Team 1



FIRE WEATHER FORECAST



FORECAST NO: 22
PREDICTION FOR: Sept 14, 2020 0600-2100

INCIDENT NAME: Sequoia Complex

UNIT: CA-SQF
SIGNED: *Dan Byrd*

TIME AND DATE
FORECAST ISSUED: Sun, Sep 13 @ 2000 hours

Incident Meteorologist – Dan Byrd

WEATHER DISCUSSION: Monday will remain hot and dry with southeast to south winds at the ridges. There could be some increase in high level smoke from surrounding fires. Clear skies will prevail once again Monday night, with some improvement to Rh recoveries, but they will still remain poor. The winds at the ridges will be out of the southeast to south Monday night. The hot and dry conditions will continue on Tuesday with southerly winds at the ridges. An upper trough will approach the California coast on Wednesday and the winds will become more southwesterly. Gusty southwest to west winds are possible late in the week.

SKY/WEATHER TODAY (MONDAY): Mostly sunny, hot and dry. Some increase in high level smoke. Expect the weak inversion to break by 0900-1000.

MAX TEMPERATURES / MIN RELATIVE HUMIDITY:

5000 FT: 86 to 92 degrees (Steady) / 7 to 12 (Steady)
7000 FT: 77 to 83 degrees (Steady) / 10 to 15 (Steady)

EYE LEVEL WINDS:

Slope/Valley: Morning drainage winds will become southeast to south after 1000-1100 with speeds 8 to 12 gusts to 20 mph. Stronger winds in aligned drainages and canyons. Winds will continue to be heavily impacted by local terrain.

Ridges: Southeast-south 8 to 12 G15 mph.

MIXING HEIGHT...11,000 FT AGL **VENTILATION...** Excellent
TRANSPORT WIND... South-Southeast 10 to 15 mph.
CWR (0.10")....0% LAL....1 **HAINES....4**

SKY/WEATHER TONIGHT (MONDAY NIGHT): Mostly clear with heavy smoke in the Kern River Valley. Overnight RH recoveries will be up some, but remain poor.

MIN TEMPERATURES / MAX RELATIVE HUMIDITY

5000 FT: 57 to 62 degrees (Steady) / 25 to 30% (UP 4-6%)
7000 FT: 55 to 60 degrees (Steady) / 20 to 25% (UP 4-6%)

EYE LEVEL WINDS:

Slope/Valley: The drainage winds will become gusty out of the northeast in the Tule River drainage overnight. North to northeast 3 to 6 mph elsewhere.

Ridges: Southeast to South 10-15 mph.

CWR (0.10")....0% LAL....1

TUESDAY: Inversion lifting by 0900-1000. Mostly sunny, but increasing smoke aloft from surrounding fires.

Max Temps: 75 to 91. **Min RH:** 9 to 19%. **Winds:** **Slope/Valley:** Morning drainage winds becoming southeast to south 8-12 G20 mph in the afternoon. **Ridge:** South 5 to 10 G15 mph in the afternoon.

LAL: 1 **CWR (0.10"):** 0% **MIXING HEIGHT:** 10,000 FT AGL **HAINES:** 4

OUTLOOK for WEDNESDAY Through FRIDAY:

WEDNESDAY: Sunny. **High Temp:** 75-90. **Min RH:** 10. **Ridge Wind:** S-SW 6-10 G18 mph.

THURSDAY: Sunny. **High Temp:** 73-87. **Min RH:** 12. **Ridge Wind:** WSW 8-12 G20 mph.

FRIDAY: Partly Cloudy. **High Temp:** 71-85. **Min RH:** 16. **Ridge Wind:** WSW 10-15 G25 mph.

FIRE BEHAVIOR FORECAST

FORECAST NUMBER: 24 Day	TYPE OF FIRE: Wildland
FIRE NAME: Sequoia Complex	OPERATIONAL PERIOD: 9/14/2020 0600-2000
DATE ISSUED: September 13, 2020	TIME ISSUED: 1300
UNIT: CA-Sequoia National Forest	SIGNED: /s/ David Greathouse FBAN

WEATHER

****Another warm, sunny day today****
(See Weather forecast for details)

Weather thresholds for large fire growth: Temps greater than 83°, RH's less than 20%, 20ft winds greater than 7mph

Rule of Thumb – To figure 20' winds, divide the observed eye level winds by .4

FUELS

Fuels- There are three primary fuels in the fire area. In the higher elevations above 5000' mixed conifer fuel types with a heavy load of dead and down dominate the fire area. At the mid elevations the fuels transition into more of a brush type. This will include most burn scars in the area. At the lower elevations, grass is the dominate fuel. There is a heavy component of beetle killed timber in the grey stage throughout the fire area. These pockets could lead to increased dead fuel loads in these areas. The fuels are very dry for this time of year. The ERC's are currently near the 97th. The 100-hr and 1000-hr fuels are at 6% and 7%. These indices indicate that all dead fuel will contribute to fire intensity.

Topography- Topography in the fire area is dominated by two features. The Kern river valley runs north/south and bisects the fire can produce diurnal up/down slope winds that can be strong enough to overpower the prevailing winds. The Tule River Canyon on the west side of the fire runs from the San Joaquin valley to east to about Ponderosa. This canyon can affect the winds and associated fire spread, especially at night.

FIRE BEHAVIOR

Tonight's maximum fire potential (Head Fire, 2%-4%% fine dead fuel moisture)

REMEMBER: These are rates of spread for surface fire only, crown fire and spotting will increase the overall rates of spread

Timber			
	0% Slope	30% Slope	60% Slope
Rate of Spread	10-12 ch/hr	14-18 ch/hr	19-21 ch/hr
Flame Lengths	4-7'	6-8'	8-10'
Brush			
	0% Slope	30% Slope	60% Slope
Rate of Spread	3-5 ch/hr	5-7 ch/hr	10-12 ch/hr
Flame Lengths	3-4'	4-6'	6-8'

Rule of Thumb: Cut head fire flame lengths and rate of spread in half for flanking fire, backing fire 2'-4' flame lengths with rates of spread of 3-4 ch/hr

All Divisions: Poor relative humidity recoveries will lead to another active burning day. Expect active surface fire with moderate to rapid rates of forward spread in the surface fuels with occasional single tree and / or group tree torching. In stringers of dense timber or on steep slope, short crown fires can be expected. Downwind spotting is likely today up to ½ mile. The probability for ignition is 80%-100%. Poor RH recoveries will likely bring about another early start to the burn period. Expect active burning conditions when you arrive to your division.

Overall, the fire movement will be to the NW aligning with the general winds. However, if the fire is or gets established in drainage bottoms, expect the fire to move upslope / upcanyon with the terrain influenced winds. The east side of the fire will see the least impact from the general winds. With the forecasted weather, hot spots may become active in areas that have been dormant.

AIR OPERATIONS

Fire behavior and smoke may impact air operations today

SAFETY

Fire order #1 – Keep informed on fire weather conditions and forecasts. Monitor the weather, read and understand the forecasts, ask questions, and most importantly, share them with your people!

/DIVISION ASSIGNMENT LIST			Branch			Division/Group			
Incident Name			I			ALPHA			
SEQUOIA COMPLEX			Operational Period						
			Date: 9/14/2020			Time: 0600-2100			
Operations Personnel									
Operations Chief		Brent Olson, Scott Schrenk Shawn Borgen (t)		Branch Director			Justin Kaber 406-250-1455		
Air Operations		Dennis Morton, John McKee Dan Sepulveda		Division/Group Supervisor			Kate Airhart 406-360-0506		
Safety Officer		Dan Cassidy, Todd Mott (t)							
Resources Assigned This Period									
Strike Team/Task Force/ Resource Designator		Req#	Last Shift	Leader	# Perso ns	Drop Off Point /Time		Pick Up Point / Time	
HC2 Patrick 1		C-90	9/19	Joshua Chilest	20	Whitsett Base 0600		Whitsett Base 2100	
TFLD			9/22	Matt Chambers	1	Whitsett Base 0600		Whitsett Base 2100	
TFLD (t)		O-336	9/21	Scott Turner	1	Whitsett Base 0600		Whitsett Base 2100	
WTT2 K&B		E-48	9/14	Mike Morgan	1	Whitsett Base 0600		Whitsett Base 2100	
DOZ2 Westlund		E-139	9/19	Alan Westlund	2	Whitsett Base 0600		Whitsett Base 2100	
EXC2 Denis Equip		E-188	9/22	Anthony Pezzi	2	Whitsett Base 0600		Whitsett Base 2100	
GRD2 Kirklang		E-97	9/17	Todd Adams	2	Whitsett Base 0600		Whitsett Base 2100	
CHIP1 Siskiyou		E-184	9/26	Dennis Lange	2	Whitsett Base 0600		Whitsett Base 2100	
CHIP1 Wyeas Forestry		E-192	9/16	Ryan Grigsby	2	Whitsett Base 0600		Whitsett Base 2100	
SOF2 (t)		O-389	9/16	James Gregory	1	Whitsett Base 0600		Whitsett Base 2100	
Medic Team 1		E-271	9/19	Devon Pulvino	3	Whitsett Base 0600		Whitsett Base 2100	
REAF		O-894	9/27	Jared Kellogg	1	Whitsett Base 0600		Whitsett Base 2100	
REAF (t)		O-398	9/17	Noah Hirsch	1	Whitsett Base 0600		Whitsett Base 2100	
Work Assignments									
Task: Hold road 190 and prevent fire from impacting values at risk. Continue to utilize aircraft to prevent fire from moving out of the Freemon Grove and spotting over the line. Implement firing operations as directed by Branch 1. Coordinate suppression actions with Y/Z and B.									
Purpose: Keep the fire spread east of the North Road and north of Ponderosa.									
End State: Limit fire spread into additional values at risk to protect communities and infrastructure.									
Special Instructions									
<ul style="list-style-type: none"> Personnel to notify DIVS of potentially sensitive cultural materials. Castle Ambulance 3 staged at Whitsett Base Camp. Castle Ambulance 2 staged at Blackrock Ranger Station. Castle REMS1 available to all Branch I divisions. Prioritization of all control or containment actions taken during the operational period in this Division will be at the discretion of the DIVS. Actions may have to be taken by the DIVS that are not enumerated in today's IAP. These actions would be a result of a significant change in actual or expected fire behavior over and above that anticipated at the time the IAP was prepared. These actions will be coordinated with and approved by the OSC whenever possible. 									
Division/Group Communication Summary									
Function	Channel	Frequency RX	Frequency TX	TONE RX	TONE TX	Function	Channel	Frequency RX	Frequency TX
COMMAND	1	170.0000	166.6750	151.4	151.4	A/G TAC	13	172.3500	172.3500
NIFC T1	5	168.0500	168.0500	151.4	151.4	A/G CMD	14	169.1500	169.1500
Prepared by		Approved By				Date		Time	
Anya Moline - RESL		Robin Jermyn - PSC				9/13/2020		1800	

DIVISION ASSIGNMENT LIST				Branch		Division/Group			
Incident Name				I		BRAVO			
SEQUOIA COMPLEX				Operational Period					
				Date: 9/14/2020		Time: 0600-2100			
Operations Personnel									
Operations Chief	Brent Olson, Scott Schrenk Shawn Borgen (t)			Branch Director		Justin Kaber 406-250-1455			
Air Operations	Dennis Morton, John McKee Dan Sepulveda			Division/Group Supervisor		Rocky Wagoner 406-531-9809			
Safety Officer	Dan Cassidy, Todd Mott (t)								
Resources Assigned This Period									
Strike Team/Task Force/ Resource Designator	Req#	Last Shift	Leader	# Persons	Drop Off Point /Time	Pick Up Point / Time			
HC1 Cherokee	C-83	9/17	Josh Tester	20	Whitsett Base 0600	Whitsett Base 2100			
WFM Whiskey Flat	O-574	9/18	Travis Clendenen	9	Whitsett Base 0600	Whitsett Base 2100			
TFLD	O-582	9/18	Robert Bundy	1	Whitsett Base 0600	Whitsett Base 2100			
ENG3 Kinsley	E-249	9/18	Kurt Edwards	1	Whitsett Base 0600	Whitsett Base 2100			
ENG6 Buffalo	E-132	9/14	Gregg Webster	3	Whitsett Base 0600	Whitsett Base 2100			
ENG6 Allen E619	E-312	9/22	Peter Allen	3	Whitsett Base 0600	Whitsett Base 2100			
ENG6 Double D	E-313	9/22	Matthew Dimas	3	Whitsett Base 0600	Whitsett Base 2100			
DO22 Shannon Bros	E-45	9/27	John Shannon	1	Whitsett Base 0600	Whitsett Base 2100			
FMOD Timbersmith	O-177	9/16	Ryan Deniz	2	Whitsett Base 0600	Whitsett Base 2100			
SOF2	O-496	9/23	Tom Nash	1	Whitsett Base 0600	Whitsett Base 2100			
SOF2 (t)	O-888	9/26	Roy Cribbs	1	Whitsett Base 0600	Whitsett Base 2100			
EMPF	O-863	9/22	Chris Inman	1	Whitsett Base 0600	Whitsett Base 2100			
EMTF	O-579	9/17	Patrick Garcia	1	Whitsett Base 0600	Whitsett Base 2100			
ARCH	O-524	9/19	Sarah Zaragoza	1	Whitsett Base 0600	Whitsett Base 2100			
REAF (t)	O-395	9/17	Ian Woodruff	1	Whitsett Base 0600	Whitsett Base 2100			
Work Assignments									
<p>Task: Utilize aerial resources to limit spread toward values at risk. Depending on fire location, utilize direct and indirect tactics to work toward containing spread. Continue burning the prepped line/ road 190 where appropriate as directed by Branch 1. Coordinate with division A and Y/Z to ensure an integrated strategy.</p> <p>Purpose: To limit fire spread to the south and west and prevent impacts to surrounding communities.</p> <p>End State: Impacts to local communities and infrastructure was kept to a minimum.</p>									
Special Instructions									
<ul style="list-style-type: none"> Personnel to notify DIVS of potentially sensitive cultural materials. Castle Ambulance 3 staged at Whitsett Base Camp. Castle Ambulance 2 staged at Blackrock Ranger Station. Castle REMS1 available to all Branch I divisions. Prioritization of all control or containment actions taken during the operational period in this Division will be at the discretion of the DIVS. Actions may have to be taken by the DIVS that are not enumerated in today's IAP. These actions would be a result of a significant change in actual or expected fire behavior over and above that anticipated at the time the IAP was prepared. These actions will be coordinated with and approved by the OSC whenever possible. 									
Division/Group Communication Summary									
Function COMMAND NIFC T3	Channel	Frequency RX	Frequency TX	TONE RX	TONE TX	Function A/G TAC A/G CMD	Channel	Frequency RX	Frequency TX
	1	170.0000	166.6750	151.4	151.4		13	172.3500	172.3500
	6	168.6000	168.6000	151.4	151.4		14	169.1500	169.1500
Prepared by Anya Moline – RESL		Approved By Robin Jermyn - PSC				Date 9/13/2020		Time 1800	

DIVISION ASSIGNMENT LIST				Branch		Division/Group				
Incident Name				I		YANKEE / ZULU				
SEQUOIA COMPLEX				Operational Period						
				Date: 9/14/2020			Time: 0600-2100			
Operations Personnel										
Operations Chief		Brent Olson, Scott Schrenk Shawn Borgen (t)			Branch Director			Justin Kaber 406-250-1455		
Air Operations		Dennis Morton, John McKee Dan Sepulveda			Division/Group Supervisor			Stryker Clark / Jerry Olson (t) 406-546-7405		
Safety Officer		Dan Cassidy, Todd Mott (t)								
Resources Assigned This Period										
Strike Team/Task Force/ Resource Designator		Req#	Last Shift	Leader		# Persons	Drop Off Point /Time		Pick Up Point / Time	
HC2 Fery		C-92	9/20	Ryan Hoffman-Wentling		20	Whitsett Base 0600		Whitsett Base 2100	
TFLD		C-83.20	9/16	Phil Reid		1	Whitsett Base 0600		Whitsett Base 2100	
TFLD		O-259	9/23	Isaac Solomon		1	Whitsett Base 0600		Whitsett Bsse 2100	
TFLD (t)		C-83.3	9/16	Mason Vance		1	Whitsett Base 0600		Whitsett Base 2100	
HEQB			9/14	Rodney Helzer		1	Whitsett Base 0600		Whitsett Base 2100	
HEQB (t)			9/14	Mike Nott		1	Whitsett Base 0600		Whitsett Base 2100	
ENG3 A-1 Fire Services		E-79	9/19	Lawrence Wyatt		2	Whitsett Base 0600		Whitsett Base 2100	
ENG4 Troy		E-134	9/19	Dan Hokanson		3	Whitsett Base 0600		Whitsett Base 2100	
ENG6 Flame Chaser		E-133	9/14	Duane Many Hides		3	Whitsett Base 0600		Whitsett Base 2100	
WTT2 Dust Busters		E-49	9/21	Nathan Stutz		2	Whitsett Base 0600		Whitsett Base 2100	
WTT2 Valley Farm		E-88	9/23	Adam Thiessen		1	Whitsett Base 0600		Whitsett Base 2100	
WTT2 Central 25		E-146	9/20	Jeff Nevins		2	Whitsett Base 0600		Whitsett Base 2100	
CHIP McKellar		E-190	9/16	Bret Strong		2	Whitsett Base 0600		Whitsett Base 2100	
SKG2 Alvord Fire		E-180	9/23	Justin Davis		1	Whitsett Base 0600		Whitsett Base 2100	
SKG2 Alvord Fire		E-194	9/16	Bernard Saul		2	Whitsett Base 0600		Whitsett Base 2100	
DOZ2 Shannon Bros		E-44	9/14	Bill Shannon		1	Whitsett Base 0600		Whitsett Base 2100	
DOZ2 Connor		E-83	9/23	Tim Connor		1	Whitsett Base 0600		Whitsett Base 2100	
FMOD Swedberg Const.		O-599	9/22	Wade Giguere		2	Whitsett Base 0600		Whitsett Base 2100	
EMPF		O-233	9/17	Silas Fischer		1	Whitsett Base 0600		Whitsett Base 2100	
EMPF		O-827	9/20	Tom Zamora		1	Whitsett Base 0600		Whitsett Base 2100	
AMBU		E-170	9/27	Castle 3		2	Whitsett Base 0600		Whitsett Base 2100	
REAF		O-229	9/19	Lanny Flaherty		1	Whitsett Base 0600		Whitsett Base 2100	
REAF		O-277	9/18	Scott Dailey		1	Whitsett Base 0600		Whitsett Base 2100	
Work Assignments										
<p>Task: Continue to secure the perimeter on the east side of the 82 Road to prevent fire from progressing south towards Pyles Camp. Monitor fire behavior in the Freeman Grove while looking for indirect containment opportunities to the west. Monitor and manage fire effects to the extent possible in the Freeman Grove. Continue to construct and prep the indirect containment line from the Needles Lookout Road south toward the Ponderosa and east toward the 82 Road. Monitor the southwest corner of the division, focusing on the east side of the Kern River.</p> <p>Purpose: Limit fire spread toward values at risk on the west side of the fire.</p> <p>End State: Private property and infrastructure is protected, natural resource impacts are limited, and there are no accidents or injuries to firefighters or the public.</p>										
Special Instructions										
<ul style="list-style-type: none"> Personnel to notify DIVS of potentially sensitive cultural materials. Castle Ambulance 3 staged at Whitsett Base Camp. Castle Ambulance 2 staged at Blackrock Ranger Station. Castle REMS1 available to all Branch I divisions. Crews be prepared to spike. Prioritization of all control or containment actions taken during the operational period in this Division will be at the discretion of the DIVS. Actions may have to be taken by the DIVS that are not enumerated in today's IAP. These actions would be a result of a significant change in actual or expected fire behavior over and above that anticipated at the time the IAP was prepared. These actions will be coordinated with and approved by the OSC whenever possible. 										
Division/Group Communication Summary										
Function	Channel	Frequency RX	Frequency TX	TONE RX	TONE TX	Function	Channel	Frequency RX	Frequency TX	
COMMAND	1	170.0000	166.6750	151.4	151.4	A/G TAC	13	172.3500	172.3500	
NIFC T6	8	166.7750	166.7750	151.4	151.4	A/G CMD	14	169.1500	169.1500	
Prepared by Anya Moline - RESL		Approved By Robin Jermyn – PSC				Date 9/13/2020			Time 1800	

DIVISION ASSIGNMENT LIST		Branch	Division/Group
Incident Name		II	GOLF
SEQUOIA COMPLEX		Operational Period	
		Date 9/14/2020	Time 0600-2100
Operations Personnel			
Operations Chief	Brent Olson, Scott Shrenk, Shawn Borgen (t)	Branch Director	Ryan Butler
Safety Officer	Dan Cassidy, Todd Mott(t)	Division/Group Supervisor	Mike King / Graydon Galloway (t) 406-370-2121 / 208-546-9653

Resources Assigned This Period						
Strike Team/Task Force/ Resource Designator	Req#	Last Shift	Leader	# Persons	Drop Off Point /Time	Pick Up Point / Time

Work Assignments

Task: Recon the area to the west of the current perimeter and develop a fire suppression strategy focusing on firefighter safety, protecting values and probability of success.

Purpose: Protect values at risk from spreading fire by limiting fire spread to the west.

End State: Values at risk are not impacted by fire. A plan to protect values at risk is developed and the spread of fire to the west is limited.

Special Instructions

--	--	--	--	--	--	--	--	--	--

Division/Group Communication Summary

Function	Channel	Frequency RX	Frequency TX	TONE RX	TONE TX	Function	Channel	Frequency RX	Frequency TX
Command	3	172.5500	162.1875	151.4	151.4	A/G TAC	13	172.3500	172.3500
NIFT T5	7	166.7250	166.7250	151.4	151.4	A/G CMD	14	169.1500	169.1500

Prepared by Anya Moline – RESL	Approved By Robin Jermyn	Date 9/13/2020	Time 1800
-----------------------------------	-----------------------------	-------------------	--------------

DIVISION ASSIGNMENT LIST				Branch		Division/Group				
Incident Name				V		BACKCOUNTRY / LIMA page 1 of 2				
SEQUOIA COMPLEX				Operational Period						
				Date: 9/14/2020			Time: 0600-2100			
Operations Personnel										
Operations Chief		Brent Olson, Scott Schrenk Shawn Borgen (t)			Branch Director					
Air Operations		Dennis Morton, John McKee Dan Sepulveda			Division/Group Supervisor			Geoff Farinholt / Richard Baker (t) 406-529-5671		
Safety Officer		Dan Cassidy, Todd Mott (t)								
Division/Group Supervisor										
Strike Team/Task Force/ Resource Designator		Req#	Last Shift	Leader		# Persons	Drop Off Point /Time		Pick Up Point / Time	
HC1 Golden Eagles		C-55	9/14	Robert Villegas		18	Troy Meadow 0600		Troy Meadow 2100	
WFM Horseshoe		O-1	9/20	Candice Kutrosky		12	Troy Meadow 0600		Troy Meadow 2100	
WFM Slate		O-4	9/21	Angel Reyes		10	Troy Meadow 0600		Troy Meadow 2100	
ENG3 SQF E-341		E-216	9/15	Merritt Cuttin		5	Troy Meadow 0600		Troy Meadow 2100	
ENG3 Gonzales		E-256	9/19	Steve Reason		3	Troy Meadow 0600		Troy Meadow 2100	
ENG5 Aberasturi		E-202	9/20	Russell Haynes		3	Troy Meadow 0600		Troy Meadow 2100	
ENG5 Cate Land Fire		E-203	9/16	Vanessa Aldridge		3	Troy Meadow 0600		Troy Meadow 2100	
ENG6 Flame Chaser		E-198	9/20	Edwin Hall		3	Troy Meadow 0600		Troy Meadow 2100	
ENG6 White Horse		E-199	9/14	Jason McGaughy		3	Troy Meadow 0600		Troy Meadow 2100	
ENG6 R&R Fire		E-205	9/23	Mike Cox		3	Troy Meadow 0600		Troy Meadow 2100	
ENG6 CNF E473		E-263	9/19	Allen Tennant		5	Troy Meadow 0600		Troy Meadow 2100	
SKD1 McKellar		E-193	9/18	Brett Strong		1	Troy Meadow 0600		Troy Meadow 2100	
SKD1 McKellar		E-214	9/17	Harley Toller		2	Troy Meadow 0600		Troy Meadow 2100	
DOZZ		E-140	9/18	David Krisher		2	Troy Meadow 0600		Troy Meadow 2100	
CHIP		E-189	9/17	Don Kelley		1	Troy Meadow 0600		Troy Meadow 2100	
CHIP		E-191	9/18	Andrew Rackley		2	Troy Meadow 0600		Troy Meadow 2100	
EXCA		E-187	9/18	Kody Williams		1	Troy Meadow 0600		Troy Meadow 2100	
FMOD Under Dog		O-596	9/18	Gary Balmain		2	Troy Meadow 0600		Troy Meadow 2100	
Work Assignments Task: Maintain readiness and structure protection in: Bonita Meadow, West Meadow, Beach Meadow and Blackrock Work Center. Recon and develop a structure protection plan for Monache. Continue to go direct with crews and equipment on eastern finger of fire north of Beach Meadows. Monitor division X-Ray from the air and utilize air resources as needed to keep green islands from impacting control lines west of H-4. Assist with point protection as needed. Purpose: Limit impact to values at risk. End State: Values at risk are not impacted by fire. A plan to protect values at risk is developed for the Monache area. The spread of fire to the south and east is limited in divisions L/X										
Special Instructions <ul style="list-style-type: none"> • A/G Tac for Branch Five: RX169.200, TX 169.200. This needs to be hand programmed. • Personnel to notify DIVS of potentially sensitive cultural materials. • Castle Ambulance 3 staged at Whitsett Base Camp. Castle Ambulance 2 staged at the Blackrock Ranger Station. Castle REMS 2 available to all branch divisions. • Prioritization of all control or containment actions taken during the operational period in this Division will be at the discretion of the DIVS. Actions may have to be taken by the DIVS that are not enumerated in today's IAP. These actions would be a result of a significant change in actual or expected fire behavior over and above that anticipated at the time the IAP was prepared. These actions will be coordinated with and approved by the OSC whenever possible. 										
Division/Group Communication Summary										
Function	Channel	Frequency RX	Frequency TX	TONE RX	TONE TX	Function	Channel	Frequency RX	Frequency TX	
COMMAND	2	170.6875	166.5750	151.4	151.4	A/G TAC	13	172.3500	172.3500	
COMMAND	3	172.5500	162.1875	151.4	151.4	A/G CMD	14	169.1500	169.1500	
NIFC T7	9	168.2500	168.2500	151.4	151.4					
Prepared by Anya Moline – RESL		Approved By Robin Jermyn - PSC				Date 9/13/2020			Time 1800	

DIVISION ASSIGNMENT LIST				Branch		Division/Group			
Incident Name				STRUCTURE		NELSON			
SEQUOIA COMPLEX				Operational Period					
				Date: 9/14/2020			Time: 0600-2100		
Operations Personnel									
Operations Chief		Brent Olson, Scott Schrenk Shawn Borgen (t)			Branch Director		Drew Daily 405-431-9476		
Air Operations		Dennis Morton, John McKee Dan Sepulveda			Division/Group Supervisor		Hunter Seaborn Bell, III 406-670-5633		
Safety Officer		Dan Cassidy, Todd Mott (t)							
Resources Assigned This Period									
Strike Team/Task Force/ Resource Designator		Req#	Last Shift	Leader	# Persons	Drop Off Point /Time	Pick Up Point / Time		
HC2 Patrick 2	C-91	9/19	Austin Hergert	20	Whitsett Base 0600	Whitsett Base 2100			
S/T 2806A	E-280	9/18	Kevin Gotro	21	Whitsett Base 0600	Whitsett Base 2100			
S/T 5810A	E-281	9/18	Sal Gutierrez	22	Whitsett Base 0600	Whitsett Base 2100			
S/T 5186B	E-354	9/26	Dwayne Shires	20	Whitsett Base 0600	Whitsett Base 2100			
TFLD		9/20	Bill Castonquay	1	Whitsett Base 0600	Whitsett Base 2100			
ENG3 CO River	E-245	9/20	Randy Hill (t)	4	Whitsett Base 0600	Whitsett Base 2100			
ENG3 Greater Eagle	E-246	9/20	Wade Michels	5	Whitsett Base 0600	Whitsett Base 2100			
ENG6 Carlsbad 62	E-259	9/18	Scott Maxwell	3	Whitsett Base 0600	Whitsett Base 2100			
ENG6 Sandoval Brush 22	E-260	9/18	Harris Toya	3	Whitsett Base 0600	Whitsett Base 2100			
ENG6 Farmington Brush 6	E-261	9/18	Duane Bair	2	Whitsett Base 0600	Whitsett Base 2100			
ENG6 Sac Mtn 218	E-262	9/18	Barbara Stephens	3	Whitsett Base 0600	Whitsett Base 2100			
WTT2 K&B	E-236	9/18	James Davis	1	Whitsett Base 0600	Whitsett Base 2100			
WTT2 Ice WT#152	E-242	9/20	Terry Titus	2	Whitsett Base 0600	Whitsett Base 2100			
WTT2 Sacramento Mtn	E-243	9/20	Ed Wishard	2	Whitsett Base 0600	Whitsett Base 2100			
WTT1 Oes WT139	E-282	9/18	Keith Smith	2	Whitsett Base 0600	Whitsett Base 2100			
WTT1 Oes WT42	E-283	9/18	Robin Serna	2	Whitsett Base 0600	Whitsett Base 2100			
WTT1 WT51	E-285	9/18	Richard Murillo	2	Whitsett Base 0600	Whitsett Base 2100			
SOFR (t)	O-511	9/17	Augie Barreda	1	Whitsett Base 0600	Whitsett Base 2100			
EMPF	O-342	9/14	Yoshimi Toyota	1	Whitsett Base 0600	Whitsett Base 2100			
AMBU5	E-337	9/23	Castle 5	2	Whitsett Base 0600	Whitsett Base 2100			
REAF	O-277	9/19	Scott Dailey	1	Whitsett Base 0600	Whitsett Base 2100			
Work Assignments									
<p>Task: Support line divisions with fireline perimeter control as instructed by Branch Director or Operations Section Chief. Reinforce structure protection plans with hose lays, static water supply and hazard mitigation as instructed by Group Supervisor for values at risk in Camp Nelson, Cedar Slope, Apline Village, Sequoia Crest and Pierpoint. Assist Lloyd Structure Group and/or Ponderosa Structure Group as requested by Operations Section Chief or Branch Director.</p> <p>Purpose: Protect values at risk from wildfire impacts with emphasis on supporting fireline perimeter control well in advance of direct threats to communities and improvements.</p> <p>End State: Values at risk and communities are able to operate in pre-fire condition accounting for public safety.</p>									
Special Instructions									
<ul style="list-style-type: none"> Personnel to notify DIVS of potentially sensitive cultural materials. Castle Ambulance 3 staged at Whitsett Base Camp. Castle Ambulance 2 staged at Black Rock Ranger station. Castle REMS 1 available to all structure divisions. Prioritization of all control or containment actions taken during the operational period in this Division will be at the discretion of the DIVS. Actions may have to be taken by the DIVS that are not enumerated in today's IAP. These actions would be a result of a significant change in actual or expected fire behavior over and above that anticipated at the time the IAP was prepared. These actions will be coordinated with and approved by the OSC whenever possible. 									
Division/Group Communication Summary									
Function	Channel	Frequency RX	Frequency TX	TONE RX	TONE TX	Function	Channel	Frequency RX	Frequency TX
COMMAND R5 T6	1	170.0000	166.6750	151.4	151.4	A/G TAC	13	172.3500	172.3500
	11	168.2375	168.2375	151.4	151.4	A/G CMD	14	169.1500	169.1500
Prepared by Anya Moline – RESL		Approved By Robin Jermyn - PSC				Date 9/13/2020		Time 1800	

DIVISION ASSIGNMENT LIST				Branch		Division/Group				
Incident Name				STRUCTURE		PONDEROSA				
SEQUOIA COMPLEX				Operational Period						
				Date: 9/14/2020			Time: 0600 to 2100			
Operations Personnel										
Operations Chief		Brent Olson, Scott Schrenk Shawn Borgen (t)			Branch Director			Drew Daily 405-431-9476		
Air Operations		Dennis Morton, John McKee Dan Sepulveda			Division/Group Supervisor			Hunter Bell / Tom McLeod (t) 406-670-5633 / 208-451-5050		
Safety Officer		Dan Cassidy, Todd Mott (t)								
Resources Assigned This Period										
Strike Team/Task Force/ Resource Designator		Req#	Last Shift	Leader		# Persons	Drop Off Point /Time		Pick Up Point / Time	
HC2 Dust Busters		C-80	9/17	Harper Resewehr		20	Whitsett Base 0600		Whitsett Base 2100	
TFLD (t)		O-780	9/20	Bryan Shropshire		1	Whitsett Base 0600		Whitsett Base 2100	
ENG3 Yosemite 31		E-248	9/20	Roy Freitas		5	Whitsett Base 0600		Whitsett Base 2100	
ENG3 J3 Contracting		E-252	9/18	Jacob Vavricka		3	Whitsett Base 0600		Whitsett Base 2100	
ENG3 J3 Contracting		E-253	9/19	Wesley Wallace		3	Whitsett Base 0600		Whitsett Base 2100	
WTT2 Dust Busters		E-89	9/24	Albert Angulo		1	Whitsett Base 0600		Whitsett Base 2100	
SOF2		O-393	9/23	Jacob Brollier		1	Whitsett Base 0600		Whitsett Base 2100	
Work Assignments										
<p>Task: Support division Y/Z with control line prep along the 54 Road and Needles Road system. Implement structure defense plans for Ponderosa and adjoining communities. Support Lloyd Structure Group and/or Nelson Structure Group as requested by Operations Section Chief or Branch Director.</p> <p>Purpose: Protect values at risk from the impacts of wildfire emphasizing perimeter control as a primary plan.</p> <p>End State: Values at risk and communities are able to operate in pre-fire condition accounting for public safety.</p>										
Special Instructions										
<ul style="list-style-type: none"> Personnel to notify DIVS of potentially sensitive cultural materials. Castle Ambulance 3 staged at Whitsett Base Camp. Castle Ambulance 2 staged at Blackrock Ranger Station. Castle REMS 1 available to all structure divisions. Prioritization of all control or containment actions taken during the operational period in this Division will be at the discretion of the DIVS. Actions may have to be taken by the DIVS that are not enumerated in today's IAP. These actions would be a result of a significant change in actual or expected fire behavior over and above that anticipated at the time the IAP was prepared. These actions will be coordinated with and approved by the OSC whenever possible. 										
Division/Group Communication Summary										
Function	Channel	Frequency RX	Frequency TX	TONE RX	TONE TX	Function	Channel	Frequency RX	Frequency TX	
COMMAND	1	170.0000	166.6750	151.4	151.4	A/G TAC	13	172.3500	172.3500	
COMMAND	2	170.6875	166.5750	151.4	151.4	A/G CMD	14	169.1500	169.1500	
VFIRE 25	12	154.2875	154.2875	156.7	156.7					
Prepared by Anya Moline – RESL		Approved By Robin Jermyn – PSC				Date 9/13/2020			Time 1800	

AIR OPERATIONS SUMMARY 220		Prepared By: Dennis A. Morton	Prepared: 09/13/2020	Prepared Time: 2000 hrs.	
1. INCIDENT NAME: SQF COMPLEX	2. OPERATIONAL PERIOD 09/14/2020	START TIME: 0800	END TIME: 2000	SUNRISE: 0638	SUNSET: 1903

<p>3. REMARKS (Safety Notes, Hazards, Air Operations Special Equipment, etc.).</p> <ol style="list-style-type: none"> <u>1. Assess mission complexity and the Benefit vs Risk of the mission.</u> <u>2. Ensure visibility and winds are adequate to safely conduct flight operations.</u> <u>3. Ensure safe vertical & horizontal separation between aircraft in smoky conditions.</u> <u>4. Utilize check points and call in and out of the dips.</u> <u>5. If you see a UAS on your division report it up the chain of command to Air Operations, it may or may not be a friendly!</u> <u>6. Smoky conditions can hamper our aviation operations adhere to visibility limitations, and DO NOT be pressured into accepting a mission that you know or feel is unsafe!</u> <p><i>(Terminate air operations at sunset...use last ½ hour for RTB. (exceptions allowed—communicate intent)</i></p>	<p>4. READY ALERT AIRCRAFT: H-407 Hoist Day/Night Capable Located in Visalia, CA Sharing with the Creek Fire Order through Communications/Air Attack</p> <p>See Medical Plan in the IAP</p>	<p>5. TFR: 0/2007 Freq: 123.725 Altitude: From the surface up to and including 12,000 feet MSL</p> <p>Polygon see NOTAM</p> <table border="0"> <tr> <td>36°22'00"N</td> <td>118°12'30"W</td> </tr> <tr> <td>35°57'00"N</td> <td>118°12'30"W</td> </tr> <tr> <td>36°03'00"N</td> <td>118°53'30"W</td> </tr> <tr> <td>36°16'00"N</td> <td>118°53'30"W</td> </tr> <tr> <td>36°22'00"N</td> <td>118°40'00"W</td> </tr> </table>	36°22'00"N	118°12'30"W	35°57'00"N	118°12'30"W	36°03'00"N	118°53'30"W	36°16'00"N	118°53'30"W	36°22'00"N	118°40'00"W
36°22'00"N	118°12'30"W											
35°57'00"N	118°12'30"W											
36°03'00"N	118°53'30"W											
36°16'00"N	118°53'30"W											
36°22'00"N	118°40'00"W											

6. PERSONNEL	NAME	PHONE #	7. FREQUENCIES	AM	FM	8. FIXED-WING Avail/ Type/ Make-Model/ N#/ Base
AOBD	Dennis A. Morton	406.660.2318	A/A Fixedwing A-6		165.9875	AIRTANKERS: ORDER THRU ATGS
ASGS	John McKee	406.370.7028	A/A Briefing A-167	132.2750		ORDER TYPE 1 HELICOPTERS THROUGH ATGS
ASGS	Daniel Sepulveda	909.374.8944	A/A (Rotor) TFR A-7	123.7250		ORDER AIR TANKERS THROUGH ATGS
ATGS	Ken Crow	559.280.6969	A/G Command A-58	CMD	169.1500	ATGS/HLCO Platforms: N47TT – AC690 (Crow) N839PA-AS 350B3 (Will)
HLCO	Travis Will	949.591.4131	A/G Tactical Branch V A-166	TAC	169.2000	
HEBM Porterville	Lee Stewart	949.591.4131	A/G Tactical Branch I A-5	TAC	172.3500	*PSD DISCREET ONLY - *170.0750* A-141 <i>Email daily aircraft costs to: portervillehelibase@gmail.com</i> Porterville Aviation Desk: 559.782.3120 Ext.701
HEBM(T)	Travis Carson	208.630.3496	CALCORD/Medivacs		156.0750	
HEBM Peppermint	George Garcia	559.542.2301	DECK		163.100	
ATBM Porterville	Raul Contreras	559.789.0191	TOLC Porterville Unicom	123.9750 122.8		
PORTERVILLE HELIBASE	Travis Carson	949.591.4131	Air Guard		168.6250 (110.9 TX)	

9. HELICOPTERS

FAA N#	TY	MAKE/ MODEL	BASE	START	AVAIL	REMARKS	FAA N#	TY	MAKE/ MODEL	BASE	START	AVAIL	REMARKS
948CH	1	CH-47D	PVT	0800	1200	A-31	H-522	2	205 A1 ++	Peppermint	0800	0830	A-123
245CH	1	BV-234	PVT	0800	0830	A-53	H-523	2	205 A1 ++	Blackrock	0800	0830	A-11
135BH	1	S-70	PVT	0800	0830	A-76	H-535	3	Bell 407	PVT	0800	0830	A-39
699RH	1	KMAX	PVT	0800	0830	A-32	HLCO 839PA	3	AS-350B3	PVT	0800	0830	HLCO/A-146
404AJ	1	CH-47D	PVT	0800	0830	Tanked/CDF							

10. TASK/ MISSION/ ASSIGNMENT (Type/ function includes: Air Tactical, Retardant, Recon, Personnel Transport, Bucket Operations, SAR, etc.)					
TYPE/FUNCTION	PRIORITY	NAME OF PERSONNEL OR CARGO (If applicable) or instructions for tactical aircraft	MISSION START	FLY FROM	FLY TO
ATGS		Provide continuous coverage over the fire as smoke and weather permits.	0900	PVT	Fire
Initial Attack		Initial Attack assistance as requested.	TBD	PVT/Peppermint	IA
Medevac		**See Medical Plan in IAP – Review during Division Breakouts**	TBD		Fire
Water Drops		As needed and approved by OPS, order through ATGS/HLCO	0900	PVT	Fire
Recon		Fire reconnaissance as requested.	0900	PVT	Fire
PSD		As needed and approved by OPS	0900	PVT	Fire
OTHER		(Back Haul, Re-Supply, Crew Movement) Place all orders through communications	0900	Peppermint	Fire

Helibase, Dip Sites, Pick Up Sites, etc.			Helibase, Dip Sites, Pick Up Sites, etc.		
Bridge Dip "B"	36 12.063' N, 118 27.445' W	5760'	H-12 Camp Nelson	36 08.368' N 118 36.917' W	4800'
Quaking Aspen Dip T2, 3 ONLY!	36 07.285' N, 118 32.815' W	7000'	H-30	36 20.809' N 118 24.512' W	6500'
Confluence Dip "B"	36 7.700' N, 118 26.316' W	4700'	H-20	36 10.960' N 118 29.259' W	6900'
Round Dip "B"	36 12.642' N, 118 28.000' W	6000'	H-21	36 12.650' N 118 30.230' W	6100'
Freeman "NR"	36 6.875' N, 118 27.551' W	5100'	C31	36 18.077' N 118 27.340' W	10800'
Beach Dip (X, U, N Only)	36 6.931' N, 118 17.824' W	7700'	C4	36 10.909' N 118 35.882' W	9100'
(MRB) Camp Nelson	36 08.402' N, 118 36.854' W	4800'	C11	36 0.630' N 118 23.448' W	9900'
H-1 T2	36 9.852' N, 118 26.985' W	6600'	DIV A Sling	36 10.948' N 118 29.360' W	6962'
H-2 T2	36 5.838' N, 118 26.806' W	6000'	Saddle Check	36 10.88' N 118 28.59' W	
H-3 Black Rock T2	36 5.609' N, 118 15.666' W	8100'	Ridge Check	36 8.55' N 118 26.72' W	
H-4 T2	36 6.128' N, 118 25.772' W	7400'	Needle Check	36 5.89' N 118 27.59' W	
			Walter Check	36 15.43' N 118 36.11' W	
H-5 Piles Camp	36 08.278' N, 118 28.678' W	5600'	Lookout IP, Enter 10000'	36 3.89' N, 118 27.51' W	
H-6	36 06.155' N, 118 24.808' W	7800'	Porterville HB	36 01.427' N 118 4.112' W	500'
H-7	36 06.833' N, 118 24.373' W	7000'	Peppermint HB	36 4.355' N 118 32.500' W	7500'
			Borror Ranch Helispot	36 09.053' N 118 48.063' W	1200'
H-8	36 06.762' N 118 22.767' W	5700'	C31	36 18.077' N 118 27.340' W	10550'

Visibility Limitations VFR Flight Helicopters Day 1/2 statute mile Clear of clouds

Flights above ground level	Flight Permitted in Winds Less than / Maximum Gust Spread		
	Type 1 Helicopters	Type 2 Helicopters	Type 3 Helicopters
More than 500' AGL	<50kts / Gusts: N/A	<50kts / Gusts: N/A	<50kts / Gusts: N/A
Less than 500' AGL	<40kts / Max Gust Spread: 15kts	<40kts / Max Gust Spread: 15kts	<30kts / Max Gust Spread: 15kts

"Surely we must all hang together, or we will all hang separately."

-Benjamin Franklin

INCIDENT RADIO COMMUNICATIONS PLAN			Incident Name SEQUOIA COMPLEX			Date/Time Prepared 9/13/2020			Operational Period Date/Time 9/14/20 DAY SHIFT		
Ch #	Function	Channel Name/Trunked Radio System Talkgroup	Assignment	RX Freq N or W	RX Tone/NAC	TX Freq N or W	Tx Tone/NAC	Mode A, D or M	Remarks		
1	CMD REPEATER	NIFC C4	DIV A/B/Y/Z	170.0000	151.4	166.6750	151.4	A	JORDON PEAK		
2	CMD REPEATER	NIFC C11	DIV BC L	170.6875	151.4	166.5750	151.4	A	SHERMAN PEAK		
3	CMD REPEATER	NIFC C31	DIV BC L / G	172.5500	151.4	162.1875	151.4	A	COYOTE PEAK		
4	FOREST REPEATER	SQF CH2	ALL/BACKUP	169.9000		165.7000	103.5	A	SQF FOREST RPTR DISPATCH		
5	TACTICAL CHNL	NIFC T1	DIV A	168.0500	151.4	168.0500	151.4	A	SQF TACTICAL		
6	TACTICAL CHNL	NIFC T3	DIV B	168.6000	151.4	168.6000	151.4	A	SQF TACTICAL		
7	TACTICAL CHNL	NIFC T5	DIV G	166.7250	151.4	166.7250	151.4	A	SQF TACTICAL		
8	TACTICAL CHNL	NIFC T6	DIV Y / Z	166.7750	151.4	166.7750	151.4	A	SQF TACTICAL		
9	TACTICAL CHNL	NIFC T7	BC L	168.2500	151.4	168.2500	151.4	A	SQF TACTICAL		
10	TACTICAL CHNL	R5 T5	UNASSIGNED	167.1125	151.4	167.1125	151.4	A	SQF TACTICAL		
11	TACTICAL CHNL	R5 T6	NELSON	168.2375	151.4	168.2375	151.4	A	STRUCTURE TAC		
12	TACTICAL CHNL	VFIRE 25	POND	154.2875	156.7	154.2875	156.7	A	STRUCTURE TAC		
13	AIR TO GROUND	A/G TAC	A/G TAC	172.3500		172.3500		A	A/G TAC		
14	AIR TO GROUND	A/G CMD	A/G CMD	169.1500		169.1500		A	A/G CMD OVERHEAD ONLY		
15	TACTICAL CHNL	CALCORD	MEDEVAC	156.0750	156.7	156.0750	156.7	A	CALCORD MEDEVAC		
16	AIR GUARD	AIR GUARD	EMCY ONLY	168.6250		168.6250	110.9	A	AIR GUARD		
Prepared by (Communications Unit) COMM UNIT 949.330.9979 / COM1 DUSTIN SENE 406.581.9816					Incident Location SEQUOIA NF County State CA Latitude N Longitude 3-7-77 W						

The convention calls for frequency lists to show four digits after the decimal place, followed by either an "N" or a "W", depending on whether the frequency is narrow or wide band. Mode refers to either "A" or "D" indicating analog or digital (e.g. Project 25) or "M" indicating mixed mode. All channels are shown as if programmed in a control station, mobile or portable radio. Repeater and base stations must be programmed with the Rx and Tx reversed.

MEDICAL PLAN (ICS 206 WF)

Controlled Unclassified Information//Basic

1. Incident/Project Name		2. Operational Period					
Sequoia Complex		Date/Time 09/14/20 0600hrs-09/14/20 2200hrs					
3. Ambulance Services							
Name	Complete Address	Phone & EMS Frequency	Advanced Life Support (ALS) Yes No				
Imperial Ambulance (west side)	28551 Hwy 190, Porterville, CA	559-687-3309	<input checked="" type="checkbox"/>	<input type="checkbox"/>			
Hall Ambulance (east side)	1001 21st St, Bakersfield	661-327-4111	<input checked="" type="checkbox"/>	<input type="checkbox"/>			
Liberty Ambulance (Castle Ambulance 4)	ICP (Kern Valley High School)	Command frequency	<input checked="" type="checkbox"/>	<input type="checkbox"/>			
4. Air Ambulance Services							
Name	Phone	Type of Aircraft & Capability					
**Kern County FD H407 Visalia	657-464-7830	Incident Primary Air Rescue, Bell 205, ALS, 24/7 Hoist					
Kern County FD H408	657-305-5433	Air Rescue, Bell 205, ALS, 24/7 Hoist					
Skylife	800-305-5433	ALS, No Hoist, requires 100x100 LZ					
CHP H40 (Fresno)	559-262-0400	Air ambulance, ALS 24/7, DAY HOIST ONLY, NIGHT STAFFING ON CALL AFTER 1800 HRS					
US COAST GUARD	REGIONAL COMMAND CENTER 510-437-3701	AIR RESCUE, HOIST 24/7, NO IN-FLIGHT MEDICAL					
5. Hospitals							
Name Complete Address	GPS Datum – WGS 84 Coordinate Standard Degrees Decimal Minutes DD° MM.MMM' N - Lat DD° MM.MMM' W - Long	Travel Time Air Gnd		Phone	Helipad Yes No	Level of Care Facility	
Kern Valley Hospital 6412 Laurel Ave Lake Isabella, CA	Lat: 35 38.07°N	30 Min	2- 3Hr	760-379-2681	<input checked="" type="checkbox"/>	<input type="checkbox"/>	Emergency Room
	Long: 118 24.35W						
	VHF:						
Sierra View Med Ctr 465 W Putnam Ave Porterville, CA	Lat:	30 Min	2-4.5 hrs	559-784-1110	<input type="checkbox"/>	<input checked="" type="checkbox"/>	Emergency Room
	Long:						
	VHF:						
Kaweah Delta Health 400 W. Mineral King Ave. Visalia, CA 93291	Lat: 36 19.65°N	30 Min	2.5-5 Hr	559-624-2000	<input checked="" type="checkbox"/>	<input type="checkbox"/>	Level 2 Trauma
	Long: 119 17.67°W						
	VHF: 468.0375 PL141.3 DTMF 3211 12K lb pad limit						
Kern Medical Center 1700 MT Vernon Ave. Bakersfield, CA 93306	Lat: 35 22.95°N	45 min	2.5- 3.75 hr	661-326-2000	<input checked="" type="checkbox"/>	<input type="checkbox"/>	Level 2 Trauma
	Long: 118 58.18°W						
	VHF: 463.100 12K lb pad limit						
Community Regional Medical Center 2823 Fresno St. Fresno, CA 93721	Lat: 36 44.568°N	1 hr	3- 5.25 hr	559-459-6000 ER 559-459-4220	<input checked="" type="checkbox"/>	<input type="checkbox"/>	Level 1 Trauma/ Burn Center
	Long: 119 47.094°W						
	VHF: 123.05 key 5times for lights 22K lb pad limit						
6. Division Branch Group		Area Location Capability					
<h1 style="font-size: 2em;">Div A</h1>		EMS Responders & Capability:		Medic team 1 (3 persons)			
		Equipment Available on Scene:		ALS, extraction, utv			
		Medical Emergency Channel:		Command			
		ETA for Ambulance to Scene:					
		Air:		30 mins			
		Ground:		2 hrs			
		Approved Helispot:		H20			
		Lat:		36 10.960°N			
Long:		118 29.259°W					

MEDICAL PLAN (ICS 206 WF)

Controlled Unclassified Information//Basic

1. Incident/Project Name	2. Operational Period	
Div B	EMS Responders & Capability:	Chris Inman, EMPF; Patrick Garcia, EMTF
	Equipment Available on Scene:	ALS, BLS
	Medical Emergency Channel:	Command
	ETA for Ambulance to Scene:	
	Air:	30 min
	Ground:	2 hrs
	Approved Helispot:	H 20
	Lat:	36 10.960°N
	Long:	118 29.259°W
Div Y/Z	EMS Responders & Capability:	Silas Fischer EMPF; Tom Zamora, EMPF; Ambulance 3
	Equipment Available on Scene:	ALS; 4x4 ALS ambulance
	Medical Emergency Channel:	Command
	ETA for Ambulance to Scene:	
	Air:	30 min
	Ground:	2 hrs
	Approved Helispot:	H1
	Lat:	36 9.852°N
	Long:	118 26.985°W
Backcountry Lima	EMS Responders & Capability:	Scott Hamilton, EMPF; Joshua Terry, EMPF; Castle Ambulance 2; Tommy Kavanaugh, EMPF; Matthew Heckman, EMPF; REMS 2 (4 personnel)
	Equipment Available on Scene:	ALS; Extraction; ALS Ambulance
	Medical Emergency Channel:	Command
	ETA for Ambulance to Scene:	
	Air:	35 mins
	Ground:	3 hrs
	Approved Helispot:	H 3
	Lat:	36 5.609°N
	Long:	118 15.666°W
Structure Nelson	EMS Responders & Capability:	Yoshimi Toyota EMPF; Castle Ambulance 5
	Equipment Available on Scene:	ALS; ALS ambulance
	Medical Emergency Channel:	Command
	ETA for Ambulance to Scene:	
	Air:	35 mins
	Ground:	3 hrs
	Approved Helispot:	Peppermint Helibase
	Lat:	36 4.355°N
	Long:	118 32.500°W
Emily Ellick-Flettre-405-593-3369	09/13/2020	Dan Cassidy SOF1 406.250.4599 09/13/2020

MEDICAL PLAN (ICS 206 WF)

Controlled Unclassified Information//Basic

Medical Incident Report

FOR A NON-EMERGENCY INCIDENT, WORK THROUGH CHAIN OF COMMAND TO REPORT AND TRANSPORT INJURED PERSONNEL AS NECESSARY.

FOR A MEDICAL EMERGENCY: IDENTIFY ON SCENE INCIDENT COMMANDER BY NAME AND POSITION AND ANNOUNCE "MEDICAL EMERGENCY" TO INITIATE RESPONSE FROM IMT COMMUNICATIONS/DISPATCH.

Use the following items to communicate situation to communications/dispatch.

1. CONTACT COMMUNICATIONS / DISPATCH (Verify correct frequency prior to starting report)

Ex: "Communications, Div. Alpha. Stand-by for Emergency Traffic."

2. INCIDENT STATUS: Provide incident summary (including number of patients) and command structure.

Ex: "Communications, I have a Red priority patient, unconscious, struck by a falling tree. Requesting air ambulance to Forest Road 1 at (Lat./Long.) This will be the Trout Meadow Medical, IC is TFLD Jones. EMT Smith is providing medical care."

Severity of Emergency / Transport Priority	<input type="checkbox"/> RED / PRIORITY 1 Life or limb threatening injury or illness. Evacuation need is IMMEDIATE <i>Ex: Unconscious, difficulty breathing, bleeding severely, 2° – 3° burns more than 4 palm sizes, heat stroke, disoriented.</i> <input type="checkbox"/> YELLOW / PRIORITY 2 Serious Injury or illness. Evacuation may be DELAYED if necessary. <i>Ex: Significant trauma, unable to walk, 2° – 3° burns not more than 1-3 palm sizes.</i> <input type="checkbox"/> GREEN / PRIORITY 3 Minor Injury or illness. Non-Emergency transport <i>Ex: Sprains, strains, minor heat-related illness.</i>
Nature of Injury or Illness & Mechanism of Injury	Brief Summary of Injury or Illness <i>(Ex: Unconscious, Struck by Falling Tree)</i>
Transport Request	<i>Air Ambulance / Short Haul/Hoist Ground Ambulance / Other</i>
Patient Location	<i>Descriptive Location & Lat. / Long. (WGS84)</i>
Incident Name	<i>Geographic Name + "Medical" (Ex: Trout Meadow Medical)</i>
On-Scene Incident Commander	<i>Name of on-scene IC of Incident within an Incident (Ex: TFLD Jones)</i>
Patient Care	<i>Name of Care Provider (Ex: EMT Smith)</i>

3. INITIAL PATIENT ASSESSMENT: Complete this section for each patient as applicable (start with the most severe patient)

Patient Assessment: See IRPG PAGE 106

Treatment:

4. TRANSPORT PLAN:

Evacuation Location (if different): *(Descriptive Location (drop point, intersection, etc.) or Lat. / Long.)* Patient's ETA to Evacuation Location:

Helispot / Extraction Site Size and Hazards:

5. ADDITIONAL RESOURCES / EQUIPMENT NEEDS:

Example: Paramedic/EMT, Crews, Immobilization Devices, AED, Oxygen, Trauma Bag, IV/Fluid(s), Splints, Rope rescue, Wheeled litter, HAZMAT, Extrication

6. COMMUNICATIONS: Identify State Air/Ground EMS Frequencies and Hospital Contacts as applicable

Function	Channel Name/Number	Receive (RX)	Tone/NAC *	Transmit (TX)	Tone/NAC *
COMMAND					
AIR-TO-GRND					
TACTICAL					

7. CONTINGENCY: Considerations: If primary options fail, what actions can be implemented in conjunction with primary evacuation method? Be thinking ahead.

8. ADDITIONAL INFORMATION: Updates/Changes, etc.

REMEMBER: Confirm ETA's of resources ordered. Act according to your level of training. Be Alert. Keep Calm. Think Clearly. Act Decisively.

MEDICAL PLAN (ICS 206 WF)
Controlled Unclassified Information//Basic
ASSIGNMENT-SPECIFIC MEDICAL EMERGENCY ACTION PLAN

Pre-Planning for today's assignment – See Page 2 IRPG

What are the likely hazards that could cause injuries? What kind of severe injuries?		
Who is the likely in-charge DIVS or overhead for an emergency in your assigned area today? (i.e. "Division Zulu")		
Who are the Medical personnel assigned to your part of the incident? What are their capabilities?		
Other Emergency Responders: fire dept, crash rescue, ambulance?		
Communications: Command channel, Air to Ground, Medical helicopters, local rescue/medical?		
Transportation methods available	Ground vehicle, drop point, coordinates, travel route?	
	Aircraft I.D, helispot names, coordinates? Hoist capable, internal transport	
	Other available methods - contingency	
Most likely workforce for evacuation		

Response checklist

Who takes charge?

- DIVS or designated Overhead manages the overall scene and evacuation process.
- Medical personnel and emergency responders manage patients and conduct rescues.
- OPS and IC make command decisions so the emergency can be given full attention and management. They continue to manage ongoing incident operations.

Response sequence:

- First, secure the scene and protect responders and patients from further injury.
- Clear the Command channel for "Emergency Traffic only" if this is a critical emergency. If not, inform Communications of non-critical-emergency status and use normal communications.
- Contact closest Medical personnel and DIVS or designated Overhead for response.
- Notify Communications to initiate Accident Action Plan response.

Information for Communications: (See Medical Incident Report, page 108, IRPG)

- Type and extent of injuries?
- Airway or breathing problems? Serious bleeding?
- Is an EMT present or needed? Are Paramedics (Advanced Life Support) needed?
- Specific location of patients (Lat/Long, access route, DP#, helicopter Landing Zone)?
- What type of transport is needed? Helicopter medevac, hoist, ambulance or ground transport?
- Name of contact person in charge of the scene.
- Do not use names of patients at any time.
- **Medical Emergency Responders confer with Medical Unit Leader and DIVS or designated Overhead to determine if this is a critical emergency and what type of transport is needed.**



HUMAN RESOURCE MESSAGE

There is zero tolerance for drugs or alcohol on this fire incident.



Think before you speak.

**People can be more sensitive than you
may think.**

This is especially true with age, cultural, geographic, gender, and educational differences.

Be kind.

Debby Hassel, HRSP (406) 274-7985

hrspfire@gmail.com

FINANCE MESSAGE

OPTIONS FOR SUBMITTING TIME:

1. **Fillable PDF CTR/Shift Ticket:** QR code to the fillable forms are included below. If you do not have QR capabilities finance can e-mail you the forms directly.



2. **Hard Copy CTR/Shift Ticket:** Fill out a hard copy CTR, snap a picture and email/text that into finance. If you send in a picture, please make sure it is legible and includes the supervisor's signature at the bottom! Please make sure to include your phone number in the **Remarks** in case we have questions.
3. OR you may turn in your actual hard copy as usual at Whitsett Spike Camp & Troy Meadow.
 - Please try to submit time at least every other day
 - H-Pay justifications are still required on your CTRs – “H = Hazard Pay” is not sufficient

****CONTRACTED EQUIPMENT PLEASE CONTACT FINANCE IF YOU WANT TO START THE PROCESS OF AN INTERIM PAYMENT****

2020.castle.finance@firenet.gov

Finance Main Line: 949-591-4123

TIP:

*****In order to use fillable pdf forms, you must have some version of Adobe Acrobat downloaded on your device. If you have any issues opening the documents call finance for assistance. *****

*****REMINDER*****

- BE SURE to call Finance **1 day** prior to your scheduled DMOB to ensure time is complete at **949-591-4123**
- Only 1 representative per resource should go to Finance at ICP to officially close out time.

DEMOBILIZATION IS NOW REMOTE!!

Demobilization Steps:

1. ALL accountable property checked-out from the incident must be returned (i.e. communications, supply). Items may be returned at Whitsett Base Camp or ICP.
2. Submit all finance documentation (time must be projected for travel home).
 - a. Abide by scheduled DMOB time or call Finance for an unscheduled DMOB.
 - b. Government agency resources that would like to close out their time 100% remotely should call **949-591-4123** when they are close to their DMOB date and make necessary arrangements to complete the process.
3. Scan the QR code on the front of the IAP to complete the DMOB process and start your travel home. **DO NOT LEAVE the incident until you have confirmed with Demobilization Unit Leader at 951-235-1568. If you have questions, please call!**

EXTENSIONS & RR

- Extensions or RR's **MUST be requested by your incident supervisor** and approved by your home unit supervisor prior to being processed.
- Extensions forms can be obtained from DMOB or the plans representative onsite at Camp Whitsett.

Are You a TRAINEE?

1. Scan these codes to access the fillable *trainee* information forms. Send photo of qualification cards and task book cover to: matthew.boss@usda.gov



Registration



Check-out



Exit Interview

2. Call Incident Training Specialist 951-314-1427 (Matt) with questions from 0600 – 2100 daily.



FINANCE

S# PROCESS

FEDERAL RESOURCES ONLY

- **PROPERTY LOSS-REPAIR-REPLACE OF NON-NATIONAL FIRE EQUIPMENT SYSTEM (NFES) OR NON-STANDARD CACHE ITEMS**

- **CAN IT BE REPLACED AT SUPPLY?**

- 1. General message is needed (ICS 213) with contact information NAME/PHONE #/EMAIL/RESOURCE ORDER # send to Supply at 2020.castle.ordering@firenet.gov**
 - **IF YOU NEED AN S# FOR REPLACEMENT BECAUSE SUPPLY DOES NOT HAVE IT PLEASE DO THE FOLLOWING**
- 2. General message is needed (ICS 213) with contact information NAME/PHONE #/EMAIL/RESOURCE ORDER #. A description of property damage or loss needs to be documented and pictures of damaged items. Please send to finance at 2020.castle.finance@firenet.gov**
- 3. We have Comp/Claims on site! Please reach out to us with any questions at 406-363-8956 or 406-366-3724.**

09/14/2020

TENTATIVE RELEASE

CASTLE US-CA-SQF-002541

CREWS

C-66 0930 (HC1) BEAR DIVIDE HOTSHOTS IHC

EQUIPMENT

**E-170 0830 (AMBU) AMERICAN FIRE SERVICE
E-143 0900 (WTT2) WATER TENDER - T2 - 212
E-146 1000 (WTT2) CENTRAL VALLEY FIRE LLC
E-56 1200 (SPT) TRANSPORTATION - PACK
E-57 1200 (SPT) TRANSPORTATION - PACK
E-179 1300 (EXCA) SHANNON BROTHERS
E-186 1300 (MAST) MASTICATOR SHANNON**

OVERHEAD

**O-332 0800 (EQPM) LOTZ, ERIC ANTHONY
O-334 0815 (FFT2) DECOSTER, CALEB DILLION
O-91 0830 (EMPF) COPEMAN, ROYCE
O-322 1100 (THSP) REMS1
O-142 1200 (PACK) ROESER, LEE
O-224 1200 (FFT2) SCHLICK, KARY**

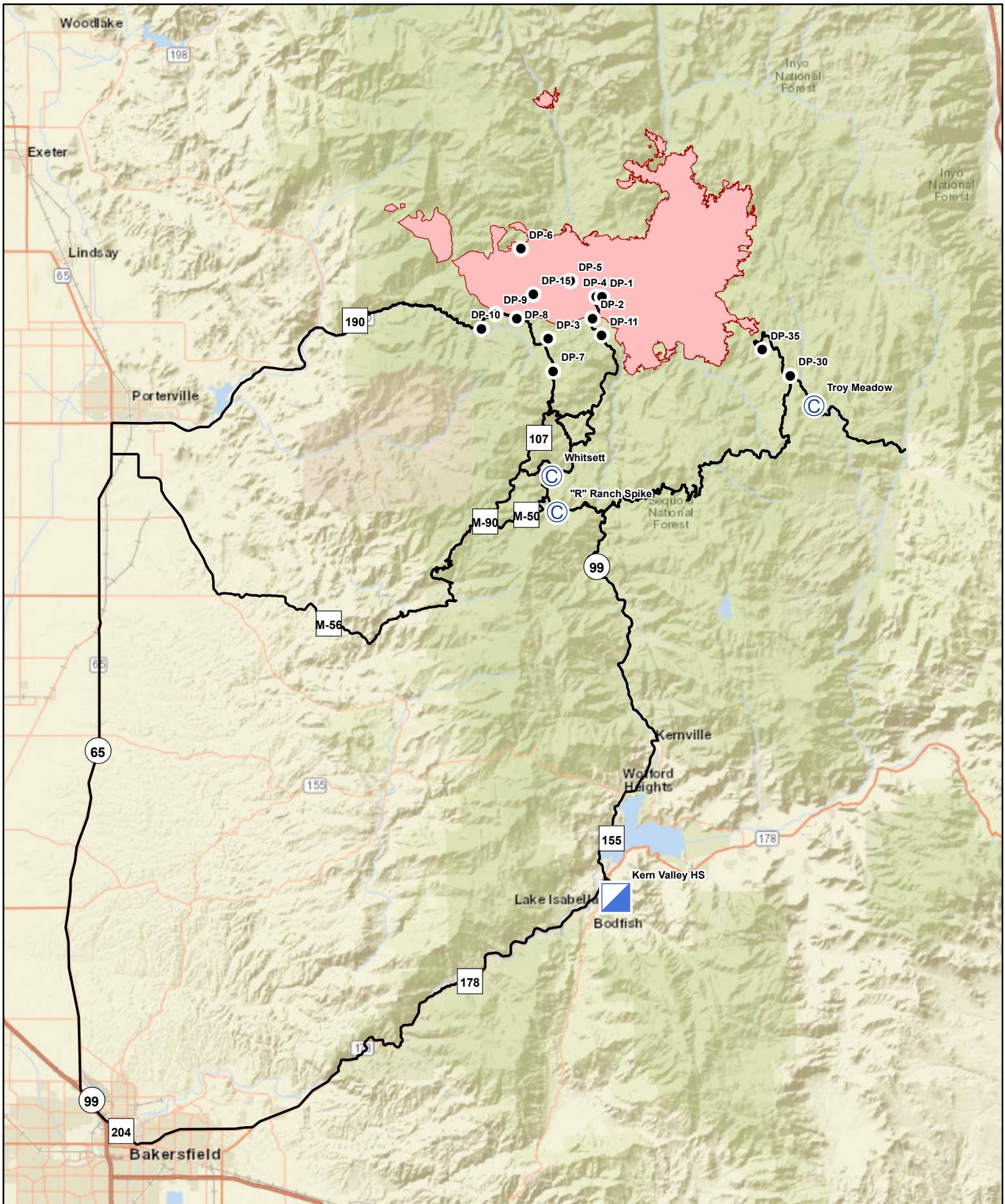


Northern Rockies Team 1

SEQUOIA COMPLEX

PHONE LIST

POSITION	NAME	MOBILE PHONE
SAFETY		
Safety Officer 1	Cassidy, Dan	406-250-4599
PUBLIC INFORMATION		
Public Information Officer 1	Smith, Jeannette M	406-544-0131
LIAISON		
Liaison Officer	Taylor, Robert L	406-544-4679
OPERATIONS		
Operations Section Chief 1	Olson, Brent H	406-249-4994
Line Ops	Schrenk, Scott	406-250-0354
Air Ops	Morton, Dennis	406-660-2318
PLANNING		
Planning Section Chief	Jermyn, Robin	406-360-5936
Planning Section Chief (t)	Carlin, Rob	406-249-1989
Deputy Planning Chief	Gump, Robert	850-688-7623
Status Check In	Heinsch, Faith Ann	858-204-7419
DEMOB	Murphy, Tanya	951-235-1568
Training Specialist	Boss, Matt	951-314-1427
Sequoia NF READ	Courter, Josh	559-920-7023
Inyo NF READ	Barnett, Adam	760-920-8104
LOGISTICS		
Logistics Section Chief 1	Showers, Charles	406-531-3691
Ordering Manager	Lind, Rita	406-291-3012
Supply Unit Leader	King, Josh	406-855-0984
Communications Unit Leader	Sene, Dustin	406-581-9816
COVID Hotline		949-330-9973
FINANCE		
Finance Section Chief 1	Schrenk, Amy	406-830-5214
General Finance Information		949-591-4123



**Transportation
Sequoia Complex**
CA-SQF_002622



