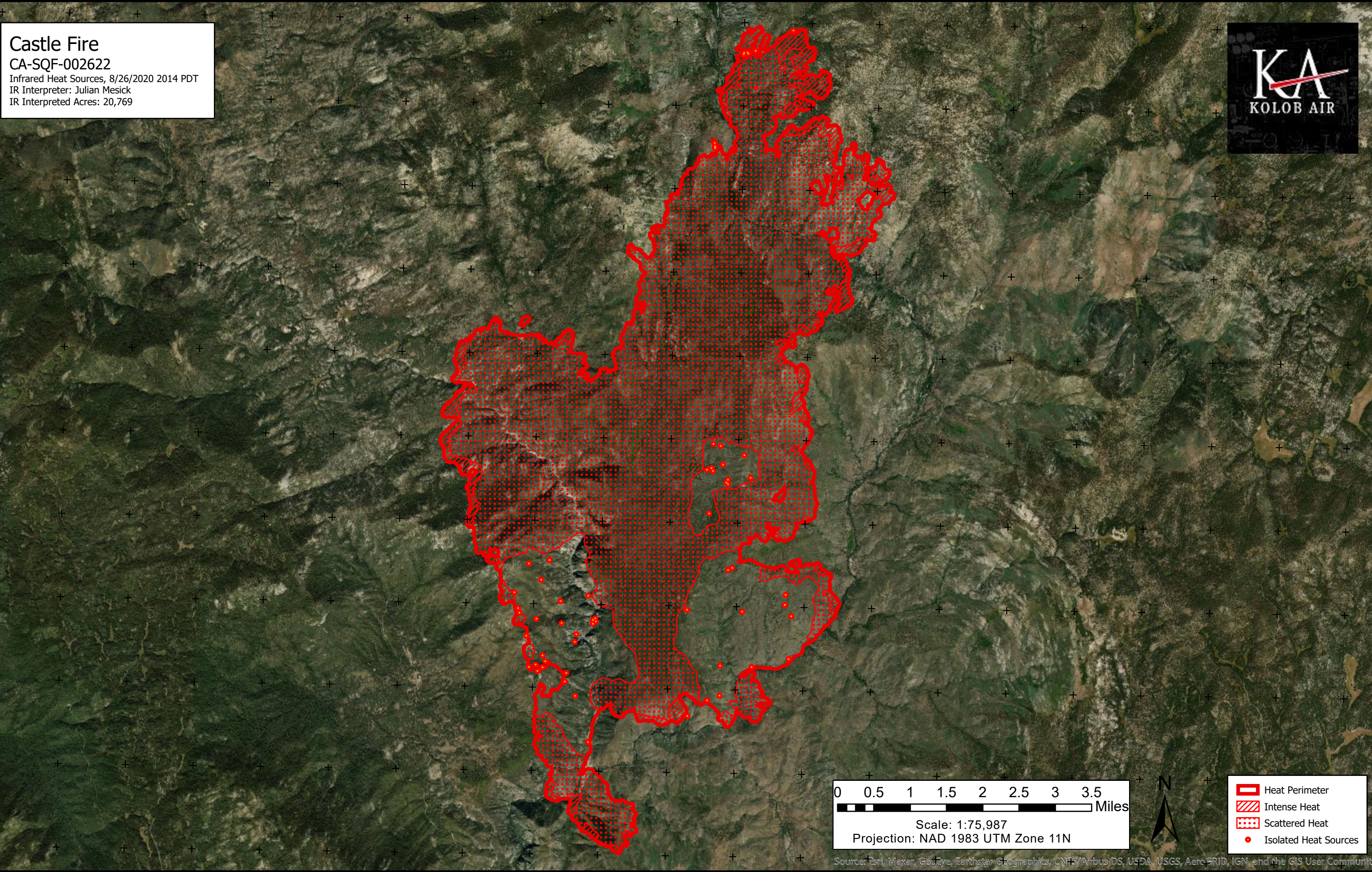


118°35'W 118°34'W 118°33'W 118°32'W 118°31'W 118°30'W 118°29'W 118°28'W 118°27'W 118°26'W 118°25'W 118°24'W 118°23'W 118°22'W 118°21'W 118°20'W 118°19'W 118°18'W 118°17'W 118°16'W 118°15'W



**Castle Fire**  
CA-SQF-002622  
Infrared Heat Sources, 8/26/2020 2014 PDT  
IR Interpreter: Julian Mesick  
IR Interpreted Acres: 20,769



0 0.5 1 1.5 2 2.5 3 3.5 Miles  
Scale: 1:75,987  
Projection: NAD 1983 UTM Zone 11N



- Heat Perimeter
- Intense Heat
- Scattered Heat
- Isolated Heat Sources

Source: Esri, Maxar, GeoEye, Earthstar/Geographics, CNES/Airbus DS, USDA, USGS, AeroGRID, IGN, and the GIS User Community

118°35'W 118°34'W 118°33'W 118°32'W 118°31'W 118°30'W 118°29'W 118°28'W 118°27'W 118°26'W 118°25'W 118°24'W 118°23'W 118°22'W 118°21'W 118°20'W 118°19'W 118°18'W 118°17'W 118°16'W 118°15'W

36°17'N  
36°16'N  
36°15'N  
36°14'N  
36°13'N  
36°12'N  
36°11'N  
36°10'N  
36°9'N  
36°8'N  
36°7'N

36°17'N  
36°16'N  
36°15'N  
36°14'N  
36°13'N  
36°12'N  
36°11'N  
36°10'N  
36°9'N  
36°8'N  
36°7'N