

118°33'W

118°32'W

# Shotgun Fire

CA-SQF-002622

Infrared Heat Sources, 9/7/2020 2032 PDT

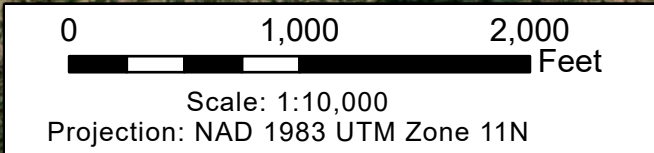
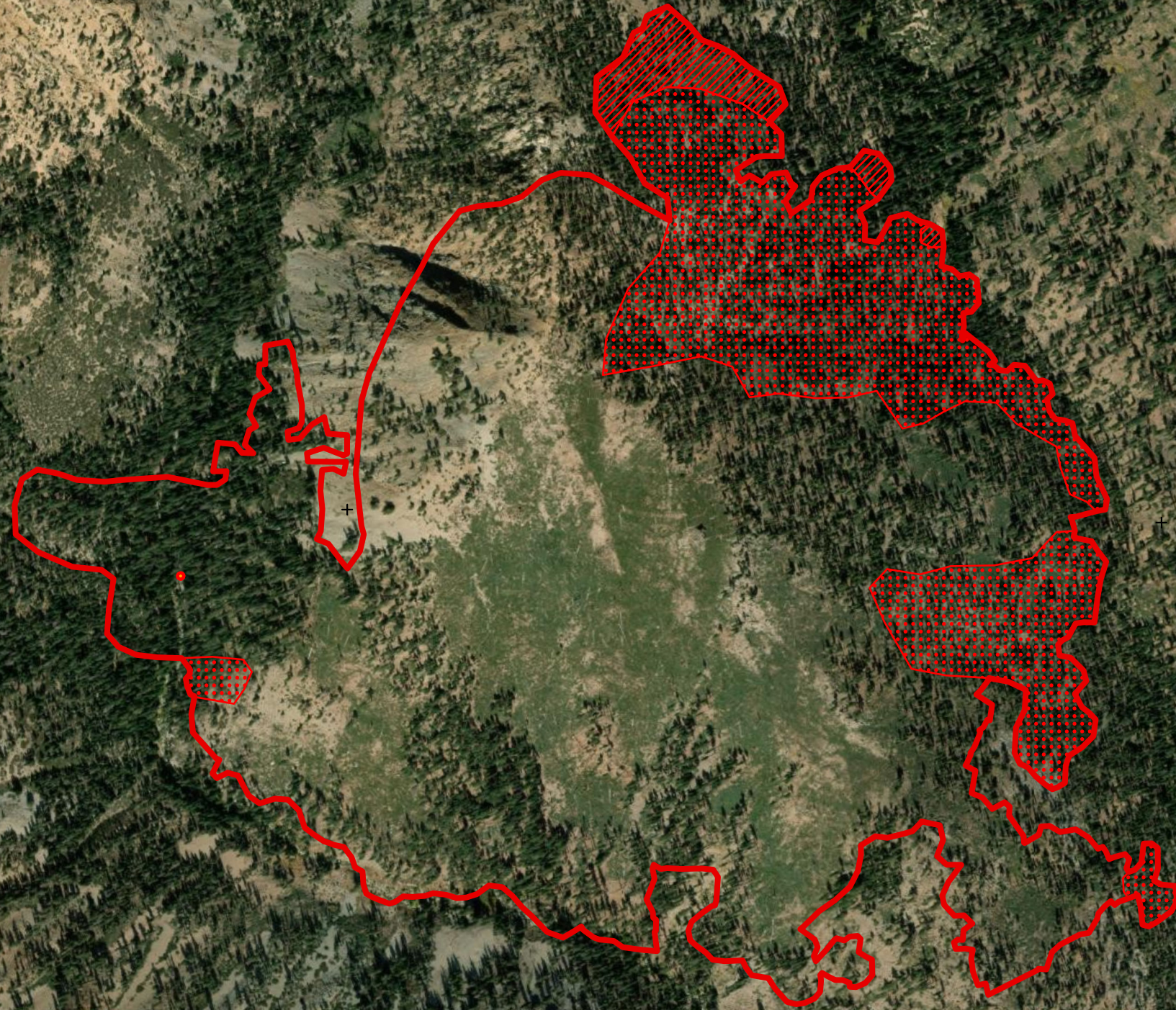
IR Interpreter: Julian Mesick





IR Interpreted Acres: 498



36°21'N

36°21'N



-  Heat Perimeter
-  Intense Heat
-  Scattered Heat
-  Isolated Heat Sources

Source: Esri, Maxar, GeoEye, Earthstar Geographics, CNES/Airbus DS, USDA, USGS, AeroGRID, IGN, and the GIS User Community

118°33'W

118°32'W