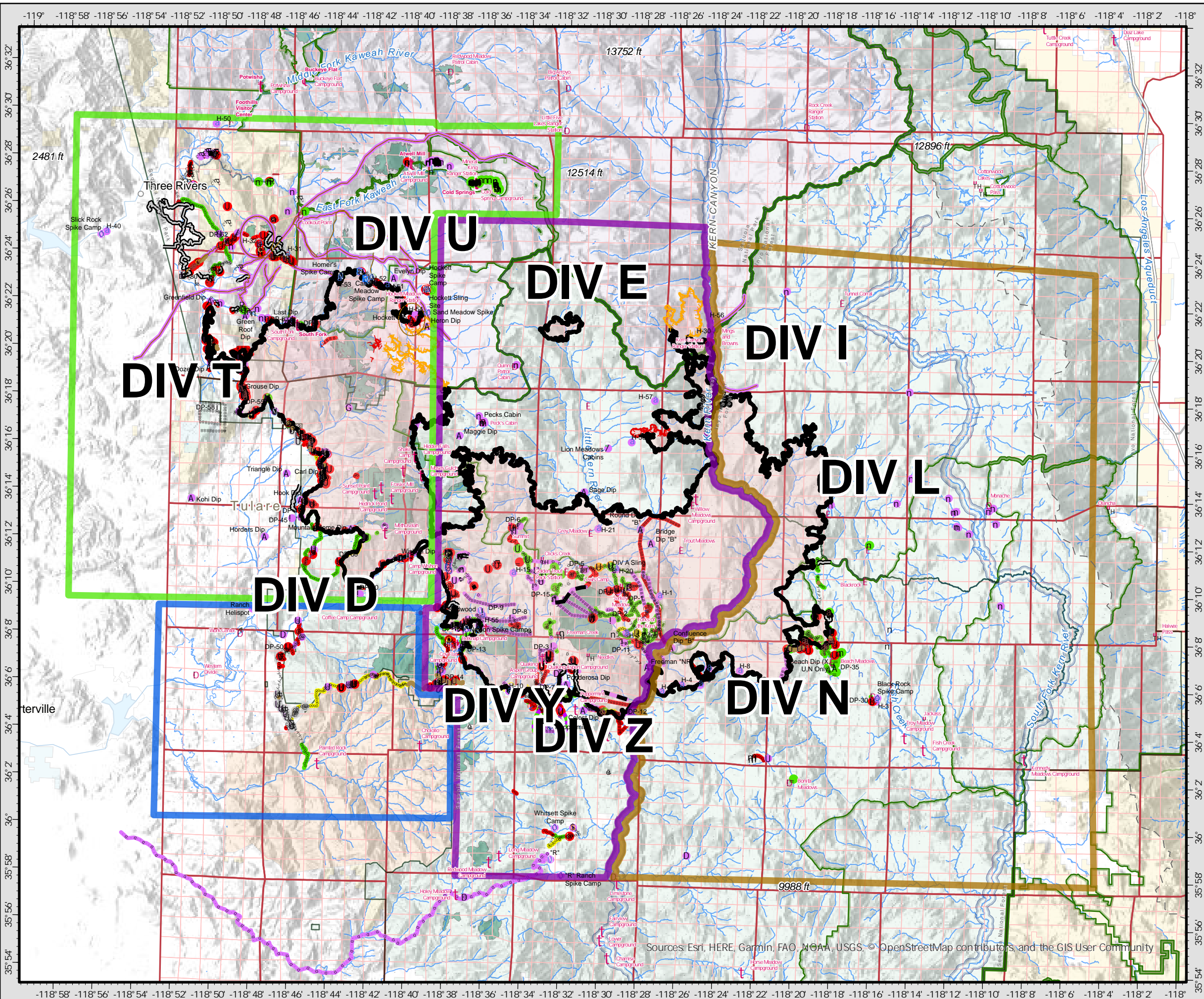


SUPPRESSION REPAIR

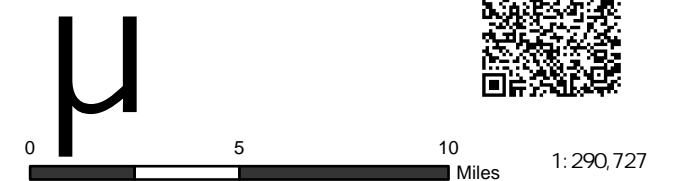
Overview

SQF Complex CA-SQF-002622

11/14/2020



- | | |
|-----------------------------------|----------------------------------|
| A Dip Site | Completed - Ready for Inspection |
| f Bridge | In Progress |
| D Closure | Repair Needed |
| / Culvert | No Repair Needed |
| ! Drop Point | Other - See Comments |
| a Dozer Push | Unknown |
| @ Fence - Cut/Damaged | Uncontrolled Fire Edge |
| ! Gate | Contained Line |
| G Hazard | Completed Dozer Line |
| T Hazard Tree | Completed Hand Line |
| ⊕ Helibase | Road as Completed Line |
| ⊕ Helispot | Access or Improved Road |
| o Camp | Completed Plow Line |
| ⊕ Internet Access | Proposed Dozer Line |
| 7 Landmark | Fire Break Planned or Incomplete |
| h Lookout | Planned Fire Line |
| U Repair Point | Planned Secondary Line |
| R Resource Location | Aerial Retardant Drop |
| E Retardant in Avoidance Area | Air Tanker Retardant |
| ⊕ Safety Zone | UAS Launch and Recovery Zone |
| é Sling Site | Escape Route |
| U Staging Area | Fence |
| < Stream Crossing | Repair Line |
| = Structure Wrap | Monitored Fire Edge |
| ⊕ Restricted Water Source | Management Action Point |
| > Water Development or Draft Site | Proposed Hand Line |
| n Value at Risk | Slate Mtn Botanical Area |
-
- | | |
|------------------------------------|---------------------------------|
| ● Completed - Inspected | ● BIA |
| ● In Use - Fire Management | ● BLM |
| ● Completed - Ready for Inspection | ● BOR |
| ● In Progress | ● FS |
| ● Repair Needed | ● FWS |
| ● No Repair Needed | ● NPS |
| ● Other - See Comments | ● State |
| ● Unknown | ● Private |
| ● Completed - Inspected | ● Wildfire Daily Fire Perimeter |
| ● In Use - Fire Management | ● Value at Risk |
| | ● Retardant Avoidance Area |
| | ● Other |



Sources: Esri, HERE, Garmin, FAO, NOAA, USGS, © OpenStreetMap contributors, and the GIS User Community

